



SOUTHERN CALIFORNIA
ASSOCIATION OF GOVERNMENTS
818 West 7th Street, 12th Floor
Los Angeles, CA 90017

T: (213) 236-1800

F: (213) 236-1825

www.scag.ca.gov

MEETING No. 2

OPEN DATA/BIG DATA – SMART AND CONNECTED SCAG REGION COMMITTEE

REGIONAL COUNCIL OFFICERS

President
Margaret E. Finlay, Duarte

First Vice President
Alan D. Wapner, Ontario

Second Vice President
Bill Jahn, Big Bear Lake

Immediate Past President
Michele Martinez, Santa Ana

COMMITTEE CHAIRS

Executive/Administration
Margaret E. Finlay, Duarte

Community, Economic &
Human Development
Rex Richardson, Long Beach

Energy & Environment
Carmen Ramirez, Oxnard

Transportation
Curt Hagman, San Bernardino County

Wednesday, July 19, 2017
10:00 a.m. – 12:00 p.m.

SCAG Main Office
818 W. 7th Street, 12th Floor
Policy Committee Room A
Los Angeles, CA 90017
(213) 236-1800

If members of the public wish to review the attachments or have any questions on any of the agenda items, please contact Tess Rey-Chaput at (213) 236-1908 or via email at REY@scag.ca.gov.

Agendas for the Open Data / Big Data – Smart and Connected SCAG Region Committee are also available at:

<http://www.scag.ca.gov/committees/Pages/default.aspx>

SCAG, in accordance with the Americans with Disabilities Act (ADA), will accommodate persons who require a modification of accommodation in order to participate in this meeting. SCAG is also committed to helping people with limited proficiency in the English language access the agency's essential public information and services. You can request such assistance by calling (213) 236-1908. We request at least 72 hours notice to provide reasonable accommodations and will make every effort to arrange for assistance as soon as possible.

This Page Intentionally Left Blank



Open Data / Big Data – Smart and Connected SCAG Region Committee
Members

1. Hon. Michele Martinez, City of Santa Ana (**Committee Chair**)
2. Hon. Margaret Finlay, City of Duarte
3. Supervisor Curt Hagman, San Bernardino County
4. Hon. Cheryl Viegas-Walker, City of El Centro
5. Hon. Jeffrey Giba, City of Moreno Valley
6. Hon. Pam O'Connor, City of Santa Monica
7. Hon. Margaret Clark, City of Rosemead
8. Hon. Rex Richardson, City of Long Beach
9. Hon. Richard Montgomery, City of Manhattan Beach
10. Marlon Boarnet, USC
11. Jack Ciulla, City of Santa Ana
12. Lea Deesing, City of Riverside
13. Crystal Dorn, Esri
14. Mark Greninger, Los Angeles County
15. Dr. Do Kim, Cal Poly Pomona
16. Scott Larson, Microsoft
17. Juan Matute, UCLA
18. Mojgan Sami, UC Irvine
19. Frank Ury, City of Mission Viejo

This Page Intentionally Left Blank

**OPEN DATA/BIG DATA – SMART AND CONNECTED SCAG REGION
COMMITTEE
AGENDA – MEETING NO. 2
WEDNESDAY, JULY 19, 2017
10:00 AM – 12:00 PM**

CALL TO ORDER

(The Honorable Michele Martinez, Chair)

PUBLIC COMMENT PERIOD – Members of the public desiring to speak on items on the agenda, or items not on the agenda, but within the purview of the Committee, must fill out and present a speaker’s card to the Assistant prior to speaking. Comments will be limited to three (3) minutes. The Chair may limit the total time for all comments to twenty (20) minutes.

ACTION ITEM

Page No.

- | | | |
|---|-------------------|----------|
| 1. <u>Approve Minutes of the June 13, 2017 Meeting</u>
<i>(Hon. Michele Martinez, Chair)</i> | Attachment | 1 |
|---|-------------------|----------|

DISCUSSION ITEMS

- | | | |
|--|---|-----------|
| 2. <u>Chair’s Report</u>
<i>(Hon. Michele Martinez, Chair)</i> | Discussion | - |
| 3. <u>SB 272 Enterprise Data Systems</u>
<i>(Charles Kalil, City of Garden Grove)</i> | Presentation | 6 |
| 4. <u>Developing an Open Data Program</u>
<i>(Joaquin Siques, City of Pasadena)</i> | <small>(Materials will be distributed at the meeting)</small> | |
| 5. <u>Social Change Data Commons</u>
<i>(John E. Kobara, California Community Foundation)</i> | Presentation | 11 |
| 6. <u>SCAG Data Tools – Local Profiles</u>
<i>(Michael Gainor, SCAG Staff)</i> | Presentation | 19 |
| 7. <u>Regional Data Survey</u>
<i>(Mike Jones, SCAG Staff)</i> | Presentation | 23 |

FUTURE AGENDA ITEM/S

ANNOUNCEMENT/S

ADJOURNMENT



This Page Intentionally Left Blank

**SOUTHERN CALIFORNIA ASSOCIATION OF GOVERNMENTS
MEETING NO. 1
OPEN DATA/BIG DATA – SMART AND CONNECTED SCAG REGION COMMITTEE
SUMMARY MINUTES OF THE MEETING
TUESDAY, JUNE 13 2017**

THE FOLLOWING MINUTES ARE A SUMMARY OF DISCUSSION/ACTIONS TAKEN BY THE ODBD COMMITTEE. AN AUDIO RECORDING OF THE ACTUAL MEETING IS AVAILABLE ON AT SCAG, 818 W. 7TH STREET, 12TH FLOOR, LOS ANGELES, CA 90017.

Members Present

Hon. Michele Martinez, Chair	<i>Santa Ana</i>
Hon. Margaret E. Finlay	<i>Duarte</i>
Hon. Cheryl Viegas-Walker	<i>El Centro</i>
Hon. Margaret Clark	<i>Rosemead</i>
Hon. Jeffrey Giba	<i>Moreno Valley</i>
Hon. Richard Montgomery	<i>Manhattan Beach</i>
Mojgan Sami	<i>UC Irvine</i>
Scott Larson	<i>Microsoft</i>
Juan Matute	<i>UCLA</i>
Crystal Dorn	<i>Esri</i>
Lea Deesing	<i>Riverside</i>
Mark Greninger	<i>County of Los Angeles</i>
Marlon Boarnet	<i>USC</i>
Jack Ciulla	<i>Santa Ana</i>
Frank Ury	<i>Mission Viejo</i>

Members Not Present

Hon. Curt Hagman	<i>San Bernardino County</i>
Hon. Pam O'Connor	<i>Santa Monica</i>
Hon. Rex Richardson	<i>Long Beach</i>

CALL TO ORDER

President Michele Martinez called the meeting to order at 9:05 a.m.

PUBLIC COMMENT PERIOD

There were no public comments.

DISCUSSION ITEMS

1. Welcome

Hon. Michelle Martinez, Committee Chair, and Hon. Margaret Finlay, SCAG Board President, welcomed and thanked the members of the Open Data/Big Data – Smart and Connected SCAG Region Committee (ODBDC), consisting of elected officials, academic representatives, and private sector interests, for their participation. Hon. Margaret Finlay stated that the ODBDC is well timed to correspond with SCAG’s Strategic Planning Initiative. Staff has prepared a new vision and mission statement that will encourage the types of innovation and creativity needed for SCAG to be a resource and leader moving forward.

2. Introductions

Members of the Committee introduced themselves.

3. Review Committee Goals

Hon. Michele Martinez gave an overview of SCAG, noting that it is the largest metropolitan planning organization (MPO) in the nation and comprising 192 member cities. She highlighted the ODBDC’s role in preparing the agency to provide regional leadership in open/big data and the integration of new technology with traditional government services. She stressed that the agency and the committee need to ensure outcomes that are beneficial for both businesses and residents, especially those in most disadvantaged communities. Goals of the committee include:

- Reviewing SCAG’s current data initiatives and tools within the context of big and open data,
- Determination of the appropriate role for SCAG in addressing the challenges and opportunities that big data, open data and smart cities provide,
- Developing strategic recommendations for the agency to implement in concert with the new strategic plan that can add value and accelerate the adoption of innovative policies and programs across the region.

Staff’s findings and recommendations will be included in a report to the Regional Council that will detail further actions and considerations that the agency should pursue.

4. Review Committee Outlook

Rye Baerg, SCAG Staff, gave a preview of the suggest topics of meetings to come which are included in the committee outlook.

Hon. Michelle Martinez suggested that smart infrastructure be discussed as a future topic, especially with regard to fiber optics. Hon. Cheryl Viegas-Walker stated another factor to address

at a future meeting is the role of big/open data at the international and state border crossings. She mentioned that data is needed for regions outside the SCAG boundaries for planning, specifically related to cargo and goods movement.

5. Defining Open Data, Big Data, and Smart Cities

Given the complexity of ODBD, there are a number of experts in this field on the Committee who will help define some of the terms.

Open Data Defined

Lea Deesing, Riverside, stated that Open Data is the idea that some data should be freely available to everyone to use and republish as they wish, without restrictions from copyright, patent or other mechanisms of control and should generally be free of charge. In current practice, most government agencies open the most requested data sets to the public first.

Jack Ciulla, Santa Ana, suggested that SCAG create standards that cities can follow in terms of which data sets should be made available and what attributes should be included to ensure consistency. The development of tools for aggregating data from local cities is another suggested area for SCAG to explore.

Big Data Defined

Mark Greninger, Los Angeles County, stated that Big Data is defined by the "three Vs": velocity, volume, and variety; and can typically only be analyzed by machines. Examples of each include: velocity as in sensor-based information, variety in the form of social media, and volume evidenced by raster analytics used for solar power analysis.

Marlon Boarnet, USC, stated with regards to record retention, archiving data, and purging, that USC's Viberti School of Engineering has developed a data tool, 'Archive Data Management System'. Mr. Boarnet encouraged SCAG to partner with USC and other universities within the region that have incentives to want archive data.

Internet of Things (IOT)/Analytics

Scott Larson, Microsoft, stated that the definition of analytics is the discovery and communication of meaningful patterns in data. The Internet of Things (IOT) is the network of physical objects that contain embedded technology to communicate and interact with their internal states or the external environment. IOT has been around for a very long time but the technology now a lot more accessible.

Smart Communities

Crystal Dorn, Esri, stated there was not a standard definition of a Smart Community but common characteristics included be: sustainability, livability, efficiency, resiliency, and safety. A Smart

Community is constantly innovating and trying to improve service delivery as technology and communities evolve.

SCAG Benchmarking

Mike Jones, SCAG Staff, stated SCAG wanted to benchmark itself with other organizations to see where the agency could improve. It turns out SCAG is ahead of the curve in relation to other MPOs. Staff looked into the State-of-the-Practice which was largely defined by static maps and reports, GIS shapefiles, interactive maps and datasets. With State-of-the-Art data, staff wants to develop and Open-Data portal, enterprise data systems, and bi-directional flow of information.

6. Preview Regional Data Survey

Kimberly Clark, SCAG Staff, presented on a Regional Data Survey to identify current data needs, foster initiatives that support data-driven decision making in regional and local planning. The survey content includes in data needs, analytics capabilities, data resources, and SCAG's role and future opportunities.

Hon. Michele Martinez, stated that expertise and capacity are extremely important. She stated that policymakers are interested in this field but often don't have the resources or understanding to support successful initiatives. Policymakers need to know how many resources/staff to invest in these types of projects.

Hon. Cheryl Viegas-Walker, stated that one of the things that she would be interested in knowing is what kind of Information Technology (IT) is available within SCAG's jurisdictions. For example, City of Riverside has dedicated IT staff while the City of Imperial, has a part-time firefighter that assists with IT. A city or county's ability to respond with meaningful data will be determined based on resource availability.

Mojgan Sami, UC Irvine, pointed out the challenges are just not technological. The survey needs to include questions about process. She suggested that the survey, be expanded beyond City Managers, given that staff often know more about data needs in their local jurisdiction. She also requested that there be components in the survey that addressed community needs. Ms. Sami suggested that a standardized app for the region would be helpful for all the cities.

Crystal Dorn suggest to include in the survey the question "What is the most frequently asked for data in your jurisdiction?" The survey should also include questions that look for new insights on how to improve the community over all.

Mojgan Sami added that the survey needs to ask the right questions. Do not burden the jurisdiction by asking what all the data sets you need; rather, what are the questions that are emerging from your city council, agencies, partners, and communities that SCAG can work on collecting.

Frank Ury, Mission Viejo, stated that one of the areas SCAG could help with data collection is create a standard baseline for cities to look at. Standardization will help drive data needs and bring the cost down.

7. Future Meeting Schedule

Third (3rd) Wednesday of every month from 9:00-11:00 AM was proposed as the next meeting time. The next meeting would be July 19, 2017.

FUTURE AGENDA ITEM/S

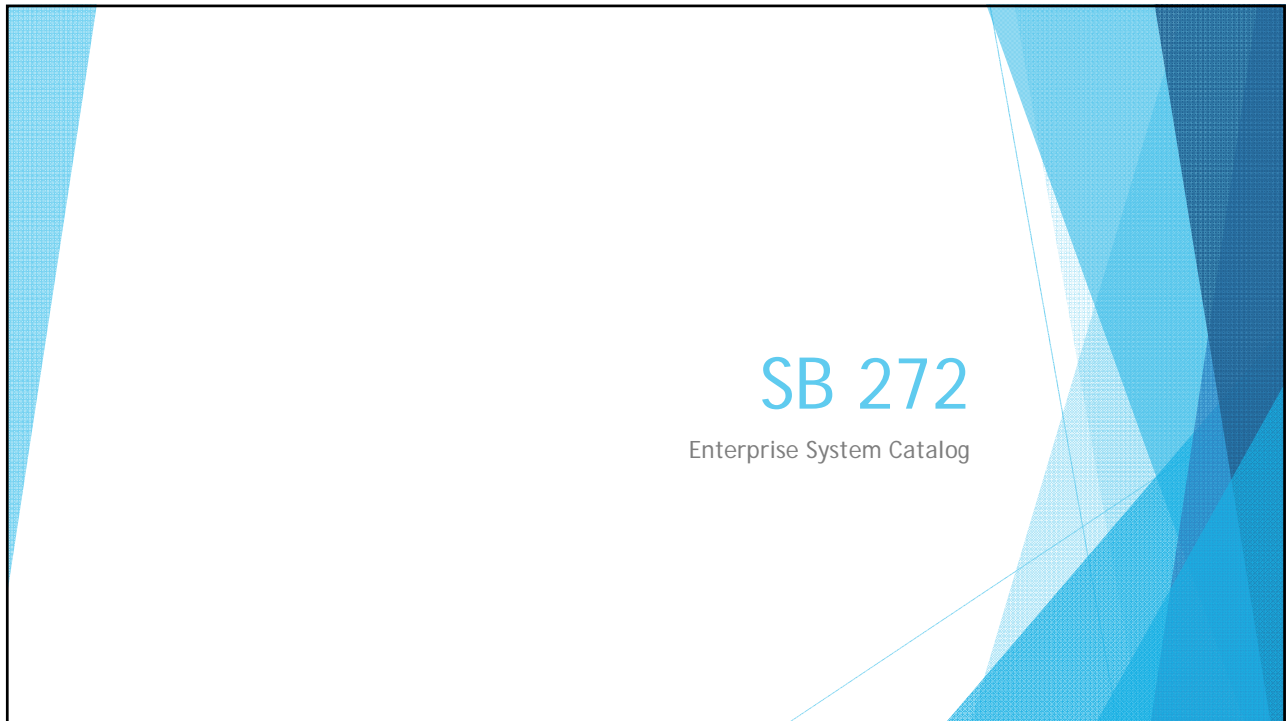
None.

ADJOURNMENT

There being no further business, President Martinez adjourned the ODBD Committee meeting at 10:51 a.m. The next meeting of the ODBD Committee will be Wednesday, July 19, 2017, 9:00-11:00 a.m., at the SCAG office in downtown Los Angeles.

//

This Page Intentionally Left Blank



SB 272 Background

- ▶ Introduced by Senator Robert Hertzberg of San Fernando Valley
- ▶ Proposed to add a section to California Public Records Act.
- ▶ Intended to improve transparency in local government
- ▶ Requires the creation of a catalog of Enterprise Systems.
- ▶ Approved October 11, 2015, took effect July 1, 2016

What is an Enterprise System?

- ▶ SB 272 Defines an Enterprise system as a software application or a computer system that collects, stores and analyzes information that the agency uses that is BOTH of the following:
 - ▶ 1) A Multi-departmental system or a system that contains information collected about the public
 - ▶ 2) A system that serves as an original source of data within an agency.

What's not included in an Enterprise System?

- ▶ IT Security systems, including firewalls and other cyber security systems.
- ▶ Physical access control systems, Employee ID systems, video monitoring and other physical control systems.
- ▶ Infrastructure and mechanical control systems, including those that control or manage street lights, electrical, natural gas, water or sewer functions.
- ▶ Systems related to 911 dispatch and operations of emergency services. Systems restricted from disclosure by section 6254.19 (Any information that would increase the potential for an attack on a public agency IT system)
- ▶ The specific RECORDS that the IT system collects, stores, exchanges, or analyzes

What does SB 272 require Agencies to do?

- ▶ Create a catalog containing:
 - ▶ Current system vendor
 - ▶ Current System product
 - ▶ System's purpose
 - ▶ A description of categories or types of data
 - ▶ The department that is the prime custodian of the data
 - ▶ The frequency that the system data is collected
 - ▶ The frequency that system is updated

Make the catalog publically available upon request

Post the catalog in a prominent location on the agency's website

What is MISAC and how did they get involved?

- ▶ The Municipal Information Systems Association of California is comprised of public agency Information Technology professionals throughout California
- ▶ MISAC promotes the understanding and strategic use of information technology within local government agencies through sharing of best practices
- ▶ MISAC focuses on Relationships, Member Resources, Education and Professional Development, and Advocacy

A SB 272 solution fit perfectly with MISAC's mission.

Garden Grove's involvement

- ▶ Garden Grove had previously volunteered to help create a shared inventory system for all MISAC agencies.
- ▶ A solution for SB 272 could also meet that need (2 birds, one stone)
- ▶ Garden Grove is an advocate for the use of Open Standards, Open Systems and the use of Open Source software.
- ▶ The system created utilized Open Source systems such as Linux, PostgreSQL, Apache and was written using Ruby on Rails.
- ▶ Each MISAC agency entered their information on a web app and had three options to display it on their own website.

Three ways to export data to website

- ▶ Static PDF (easiest to implement, offers the fewest features to public)
- ▶ CSV (Allows IT staff to manipulate data and put it up on their website)
- ▶ JSONP (recommended solution as it is dynamic and offers more options to public)

Example of JSONP implementation

Enterprise Systems Catalog

Download PDF

Product	Vendor	Purpose	Data Category	Custodian	Collection Frequency	Update Frequency
Accounts Payable	City of Garden Grove	Process vendor payments	Financial System	Finance Department	As Needed	As Needed
Accounts Receivable	City of Garden Grove	Generate miscellaneous invoices and reconcile payments	Financial System	Finance Department	As Needed	As Needed
ArcGIS Server	Esri	Addressing, Planning, Zoning, Public Works Data, Land Records.	Geographic Information Systems	Information Technology	Daily	As Needed
Archival System	City of Garden Grove	Archiving of City documents and official records	Document Management	All Departments	Daily	As Needed
Budget	City of Garden Grove	Budget system for labor and non-labor	Financial System	Finance	Annually	Annually
Building Abatement System	City of Garden Grove	Case Management and Invoicing for sub-standard housing	Permit System	Community Development	As Needed	As Needed
Business Tax and Permit System	City of Garden Grove	Issue and track business tax certificates and business permits. Also, track business tax leads and notifications.	Business License	Finance Department	Daily	Daily
Citizen Requests	City of Garden Grove	Submit and track citizens' issues and complaints with public properties.	Other	Public Works	Daily	Daily

SCAG future involvement

- ▶ Like MISAC SCAG looks at broader issues facing all agencies
- ▶ MISAC focuses only on IT related issues
- ▶ When those issues intersect, we should be working together.
- ▶ There needs to be a SCAG liaison to MISAC and perhaps visa versa
- ▶ Garden Grove is always interested in software development collaboration

This Page Intentionally Left Blank




The Los Angeles County Social Change Data Commons

data for advocacy, advocacy for data

From CCF's strategic plan to SCDC


We believe that data is not an inert lifeless resource but contains within it the power of change.

Lead positive, systemic change to strengthen Los Angeles



Define, measure, and communicate the most significant needs of LA communities through the creation of a social change data platform.

2



The Social Change Data Commons

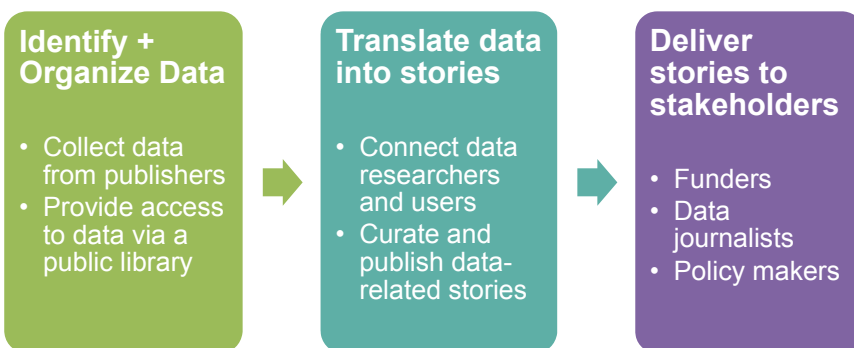
- Establishes Los Angeles County's first comprehensive public library of open data
- Uses data to advocate for the unmet and underserved needs of L.A. County



3



Using data to advocate for resources



4



Content partnerships



- Licensing agreement to host and publish MoA's L.A. County Human Development Index and the first *Portrait of LA*
- Developing relationships
 - Southern California Association of Governments
 - PERE-USC Program for Environmental & Regional Equity
 - California Data Collaborative⁵



Site in beta: homepage

SOCIAL CHANGE DATA COMMONS Hello, ccasilli@calfund.org Contact Us About Us

Data Library Publishers Focus Areas Stories

The Social Change Data Commons, a robust community data platform for L.A. County's growing community of change agents, provides access to over 2,000 datasets from 600+ publishers, and showcases stories about the change public data can ignite in our region. We believe that data, when used well, has the power to improve the lives of all of LA County's residents, including the most vulnerable.

SEARCH

Beta One google form

Welcome to the early beta of the Social Change Data Commons website! Help us to improve it by sharing your thoughts, comments, and suggestions using the google form.

Featured Datasets

- Heart Disease (B & Over) 2011-2012
JUN 30 2017 | CITY OF LOS ANGELES
- Addresses in the City of Los Angeles
JUN 30 2017 | CITY OF LOS ANGELES
- Bureau Of Street Lighting (BSSL) - Performance Metrics
JUN 30 2017 | CITY OF LOS ANGELES
- CA Educational Attainment & Personal Income
JUN 30 2017 | CALIFORNIA DEPARTMENT OF FINANCE
- City Expenditures - Health and Culture, and Leisure
JUN 30 2017 | CALIFORNIA STATE GOVERNMENT

By the Community, for the Community
The Forgotten History of the Long Beach Co...

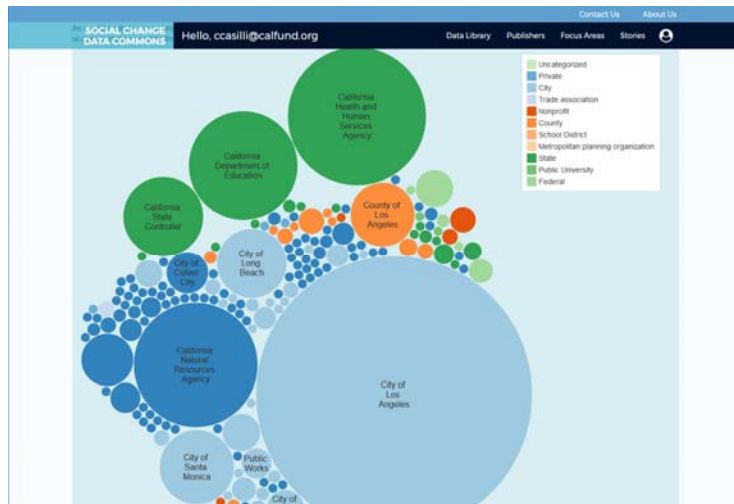
The Complex Numbers of Los ...
Tackling homelessness

Asian Population Health Ris...
A Data Mystery

5



Site in beta: publishers



7



Site in beta: publishers

SOCIAL CHANGE DATA COMMONS		Hello, ccasilli@calfund.org		Contact Us	About Us
		Data Library	Publishers	Focus Areas	Stories
<input checked="" type="checkbox"/> City of Los Angeles	<input type="checkbox"/> City of Lynnwood	<input type="checkbox"/> City of Malibu	<input type="checkbox"/> City of Manhattan Beach		
<input type="checkbox"/> Administrative Officer, City Aging	<input type="checkbox"/> City of Moraga	<input type="checkbox"/> City of Monterey Park	<input type="checkbox"/> City of Norwalk		
<input type="checkbox"/> Airports, Los Angeles World	<input type="checkbox"/> City of Palmdale	<input type="checkbox"/> City of Palmdale	<input type="checkbox"/> City of Pasadena		
<input type="checkbox"/> Animal Services	<input type="checkbox"/> City of Palmdale Estates	<input type="checkbox"/> City of Placentia	<input type="checkbox"/> City of Rancho Palms Verde		
<input type="checkbox"/> Attorney, Office of the City Building and Safety	<input type="checkbox"/> City of Pico Rivera	<input type="checkbox"/> City of Placentia	<input type="checkbox"/> City of Rosemead		
<input type="checkbox"/> City Attorney	<input type="checkbox"/> City of Redondo Beach	<input type="checkbox"/> City of Redondo Beach	<input type="checkbox"/> City of Santa Ana		
<input type="checkbox"/> City of Los Angeles, Bureau of Street Services	<input type="checkbox"/> City of San Fernando	<input type="checkbox"/> City of San Marino	<input type="checkbox"/> City of Santa Clarita		
<input type="checkbox"/> City of Los Angeles, City Clerk	<input type="checkbox"/> City of Santa Monica	<input type="checkbox"/> City of Santa Monica Planning	<input type="checkbox"/> City of Santa Monica, Public W.		
<input type="checkbox"/> City of Los Angeles, City Controller	<input type="checkbox"/> City of Santa Maria	<input type="checkbox"/> City of Signal Hill	<input type="checkbox"/> City of South El Monte		
<input type="checkbox"/> City of Los Angeles, City Planning	<input type="checkbox"/> City of South Pasadena	<input type="checkbox"/> City of Temple	<input type="checkbox"/> City of Torrance		
<input type="checkbox"/> City of Los Angeles, LAPD	<input type="checkbox"/> City of West Covina	<input type="checkbox"/> City of West Hollywood	<input type="checkbox"/> City of Westlake Village		
<input type="checkbox"/> City of Los Angeles, Los Angeles Department of Transportation	<input type="checkbox"/> Civic Center Authority	<input type="checkbox"/> Compton	<input type="checkbox"/> Compton Creek Mosquito Aba.		
<input type="checkbox"/> Contract Administration Bureau, Public Works	<input type="checkbox"/> Congressional Legislative Data	<input type="checkbox"/> County of LA GIS Services	<input checked="" type="checkbox"/> County of Los Angeles		
<input type="checkbox"/> Convention Center	<input type="checkbox"/> Crescenta Valley Water District	<input type="checkbox"/> Crisis Tact Line	<input type="checkbox"/> Demand Progress		
<input type="checkbox"/> Council District 1	<input type="checkbox"/> Downey	<input type="checkbox"/> Downey Cemetery District	<input type="checkbox"/> Economic Policy Institute		
<input type="checkbox"/> Council District 10	<input type="checkbox"/> El Monte	<input type="checkbox"/> Emergency Medical Services C.	<input type="checkbox"/> ESRB		
<input type="checkbox"/> Council District 11	<input type="checkbox"/> Fairy Godboss	<input type="checkbox"/> FilmLA, Inc.	<input type="checkbox"/> Foothill Municipal Water Dist.		
<input type="checkbox"/> Council District 12	<input type="checkbox"/> Gateway Cities Council of Gov.	<input type="checkbox"/> Golden Valley Municipal Water	<input type="checkbox"/> Google		
<input type="checkbox"/> Council District 13	<input type="checkbox"/> Greater Los Angeles County W.	<input type="checkbox"/> Green Cove - California Pilot Pr.	<input type="checkbox"/> GreenInfo Network		
<input type="checkbox"/> Council District 14	<input type="checkbox"/> Health Resources and Services	<input type="checkbox"/> High Desert Corridor Joint Pow.	<input type="checkbox"/> Homeland Infrastructure Foun.		
<input type="checkbox"/> Council District 2	<input type="checkbox"/> Huntington Municipal Water	<input type="checkbox"/> Inglewood	<input type="checkbox"/> Interim Planning Agency for L.		
<input type="checkbox"/> Council District 3	<input type="checkbox"/> Judicial Council of California L.	<input type="checkbox"/> Kinneloh Irrigation District	<input type="checkbox"/> La Canada Irrigation District		
<input type="checkbox"/> Council District 4	<input type="checkbox"/> Lancaster Cemetery District	<input type="checkbox"/> La Puente Valley County Water	<input type="checkbox"/> Las Virgenes Municipal Water		
<input type="checkbox"/> Council District 5	<input type="checkbox"/> Law Library	<input type="checkbox"/> League of California Cities	<input type="checkbox"/> Little Lake Cemetery District		
<input type="checkbox"/> Council District 6	<input type="checkbox"/> Local Agency Formation Com.	<input type="checkbox"/> Los Angeles Care Health Plan	<input type="checkbox"/> Los Angeles Comestoon & Exh.		
<input type="checkbox"/> Council District 7	<input type="checkbox"/> Los Angeles County Chambers	<input type="checkbox"/> Los Angeles County Economic	<input type="checkbox"/> Los Angeles County Employm.		
<input type="checkbox"/> Council District 8	<input type="checkbox"/> Los Angeles County Regional	<input type="checkbox"/> Los Angeles Homeless Service	<input type="checkbox"/> Los Angeles Memorial Colosseu.		
<input type="checkbox"/> Council District 9	<input type="checkbox"/> Los Angeles Regional Water Q.	<input type="checkbox"/> Los Angeles Solid Waste Auth.	<input type="checkbox"/> Los Angeles Times		
<input type="checkbox"/> Cultural Affairs	<input type="checkbox"/> Main San Gabriel Basin Water	<input type="checkbox"/> Malibu Mexa Community Serv.	<input type="checkbox"/> Medicare		
<input type="checkbox"/> Disability, Department on Economic and Workforce Development					
<input type="checkbox"/> El Pueblo					
<input type="checkbox"/> Emergency Management					
<input type="checkbox"/> Employee Relations Board					
<input type="checkbox"/> Employees' Retirement System					

8



Site in beta: publishers

Publisher
City of Long Beach
 Interface listing all of the searchable databases the city maintains.

Children

- City of Long Beach, Long Beach Airport
- City of Long Beach, Long Beach Development Services
- City of Long Beach, Long Beach Police Department

Datasets

Animal Care and Adoptions
 JUN 30 2017 | CITY OF LONG BEACH

City of Long Beach Budget & History
 JUN 30 2017 | CITY OF LONG BEACH

Park Services
 JUN 30 2017 | CITY OF LONG BEACH

Public Refuse Container Locations
 JUN 30 2017 | CITY OF LONG BEACH

Points of Interest
 JUN 30 2017 | CITY OF LONG BEACH

Linked Stories

9



Site in beta: data library

Data Library

SCDC's Data Library provides access to over 2,000 openly accessible datasets related to L.A. County, sourced from over 600 different publishers. The majority of data in the inventory are collected and maintained by government agencies at the local, state and federal level, but we also included datasets from nonprofit and private publishers.

The Data Library works like a catalog. It documents datasets by recording and maintaining metadata for each entry and provides direct access to the data via an external link. Users also have the opportunity to comment or ask questions on that particular dataset, and can save the dataset in their profile for future reference.

Each dataset entry conforms to three main criteria:

- **Open** - Nearly all of the datasets on the SCDC site are open and publicly accessible. Although we aim to advocate for better access to open data, we have made the decision to list relevant datasets even when they do not fulfill the high standards we have set. For instance, access to some datasets included in the inventory are restricted for legal or ethical reasons, like the California State Attorney General's CalGang database. In these cases, we've tried to include as much information as possible about who may request access to a dataset and how they may do so.
- **Machine-readable** - Most dataset entries link to the website from which users may directly download data. Please note that some entries link to data that are not machine readable (e.g., PDFs reporting cities' enterprise systems or California Department of Education data available as paper records). In the cases when data are not available for immediate download, we provide a link to a page with more information about accessing the data.
- **Complete Metadata Information** - For each dataset, the Data Library records and maintains metadata as provided by the publisher. In some instances, not all required metadata fields (see below for more details) will be completed; we chose to provide access to these datasets and have highlighted the metadata field completion rate.

Through the creation of a minimum set of metadata field requirements, we hope to create accountability and guidance for publishers, while showcasing the importance of accurate and detailed metadata in making data and information truly open.

1 2 3 4 5 6 7 8 9 10

100-Year Flood Plain
 100 Year Flood Plains as delineated by the Federal Emergency Management Agency (FEMA) >>

POSTED JUN 30 2017 | CITY OF LOS ANGELES | CIV. ANL, SHAWNEE

70 % METADATA COMPLETE

10



Site in beta: stories

Social Change Data Commons | Hello, ccasilli@calfund.org | Data Library | Publishers | Focus Areas | Stories | Contact Us | About Us

Stories | Submit Story

By the Community, for the Community
The Forgotten History of the Long Beach Co...

The Complex Numbers of Los ...
Lacking homelessness

Asian Population Health Ris...
A Data Mystery

The Unique Civic Data Oppor...

Finding the Story in the Data
Education and Data Literacies in Los Angel...

Using Public Data to Get CL...
Cruds, Grades, and Garbage

Health, Housing, and Highways
L.A. County's Gordian Knot

FEATURED STORIES

A new standard to help maintain LA's streets as a post-automobile infrastructure

By the Community, for the Community

The Evolution of the Social Change Data Commons

The Unique Civic Data Opportunity in Southern California

Asian Population Health Risks and the Missing Data

The Complex Numbers of Los Angeles

Counting Los Angeles County

Using Public Data to Get Cleaner Streets

Health, Housing, and Highways

Finding the Story in the Data

11



Site in beta: stories

Social Change Data Commons | Hello, ccasilli@calfund.org | Data Library | Publishers | Focus Areas | Stories | Contact Us | About Us

The Evolution of the Social Change Data Commons

Our history

By ccompton@calfund.org

SAVE

LINKED DATA SETS
No Linked Data Sets

RELATED
No Related Stories

The Evolution of the Social Change Data Commons

Growing social change through data

You can see the idea of the project in a single number: 800,000. According to the 2010 census, that's how many Long-term Permanent Residents in Los Angeles County were eligible to attain citizenship. It's an incredible figure, the highest in the U.S., larger than the population of Seattle.

As media outlets picked up the story in 2011, this single data point drew a lot of attention. National and local funders who understood the incredible benefits of citizenship joined forces to invest in L.A. naturalization programs. In partnership with

12



Site in beta: stories

The screenshot shows the Social Change Data Commons website. The header includes the site name, a contact email (Hello, ccasilli@caifund.org), and navigation links for Data Library, Publishers, Focus Areas, and Stories. The main content area features a story titled "The Complex Numbers of Los Angeles" by admin, with a "SAVE" button and sections for "LINKED DATA SETS" and "RELATED". A large photograph of a man with a white beard and a cap sitting on a bench with a dog is the main image. Below the photo, there is a paragraph of text starting with "The most recent numbers for the homeless population of Los Angeles County are in and as of May 2017, they have grown 23% to nearly 38,000 individuals..."

13



SCDC site construction



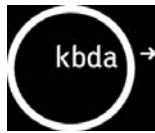
Bitwise Industries, Shift3

- Built on open source software
- 2,000+ catalogued datasets, searchable by a powerful search tool
- Interactive functionalities for users – comments, saving datasets, etc.
- Community platform for stories about data and its impact on social change

14



Naming + branding + business model exploration



KBDA

- Defining and establishing the site's messaging, naming and branding.



SidePorch

- Identifying sustainable business models for open data platforms.

15



SCDC timeline



- Get site feedback from users
- Implement branding and naming solutions
- Explore business models

- Release site live
- Publish MoA's Portrait of LA
- Develop Partnerships
- Exploit social media

- Implement sustainable business model
- Develop community engagement

16



2017 Local Profiles

Project Overview

Open Data/Big Data Committee
July 19, 2017

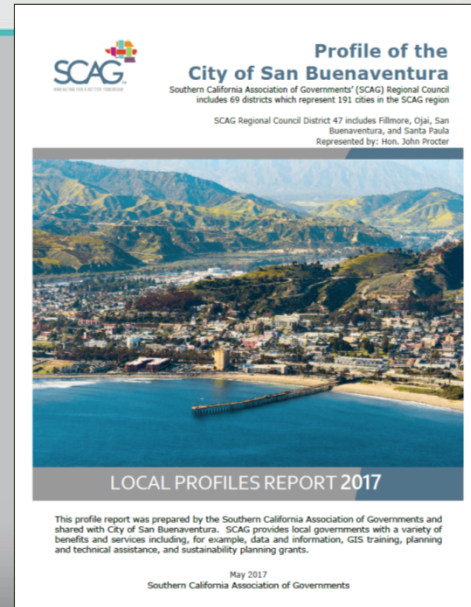
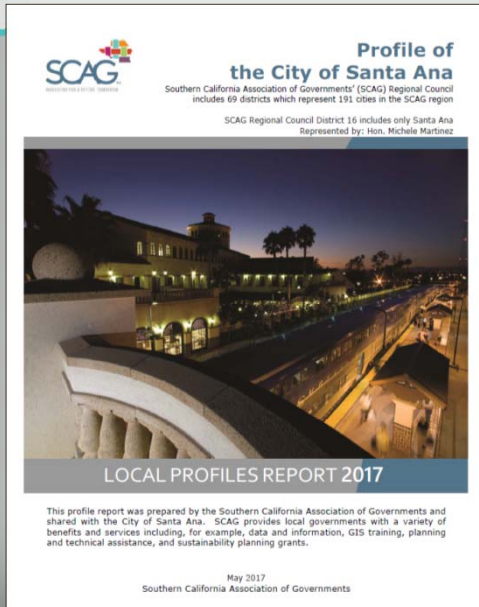
Mike Gainor
Senior Regional Planner
Local Profiles Project Manager



2017 Local Profiles

- Prepared biennially for each member city, county, & unincorporated area in the SCAG region
- Contains current demographic, socio-economic, housing, transportation, & education data within historical context
- Helps identify current & evolving demographic trends in local jurisdictions
- Provided as a service to our member jurisdictions
- The 2017 Local Profiles are posted on the SCAG website: www.scag.ca.gov/resources/profiles.htm

2017 Local Profiles



2017 Local Profiles

Local Profiles Data Categories

- **Population:** Total, Age, Ethnicity
- **Households:** Total, Average Size, Income, Owner/Renter
- **Housing:** Production by Type, Permits Issued, Sales Price, Age
- **Transportation:** Mode Choice, Travel Time, Top Destinations
- **Employment:** Jobs by Sector, Average Salary
- **Retail Sales:** Total Sales, Sales per Person
- **Education:** Enrollment by Grade Level, Educational Attainment

2017 Local Profiles

New Data Categories

- **Active Transportation:** Bike Lane Mileage by Class (by County)
- **Public Health:** Rates for Obesity, Physical Activity, Asthma, Diabetes, & Heart Disease

New Data Items

- **Population Density**
- **Housing Cost Share:** Renters & Homeowners
- **Travel Time to Work: Range of Minutes**
- **Household Vehicle Ownership**

4



50 SOUTHERN CALIFORNIA ASSOCIATION OF AIRPORTS AND AIRPORTS OF DEVELOPING AREA

SCAG LOCAL PROFILES

LAX

FOR MORE INFORMATION: Please visit the SCAG website at www.scag.ca.gov or contact Michael Gainor at (213) 236-1822 or via email at LocalProfiles@scag.ca.gov.

6

Thank You!

For More Information:

Mike Gainor

localprofiles@scag.ca.gov

www.scag.ca.gov/resources/profiles.htm



Regional Data Survey

Survey for Local Jurisdictions



Local Data Needs

- Identify current data needs and opportunities from local jurisdictions
- Foster initiatives that support data-driven decision making in regional and local planning
- Meet data related opportunities and challenges of the next decade



Revised Survey Using Committee Input

- Additional Information
- Clarification of Questions
 - Capacity
 - Types of GIS Services
- Increased Answer Selections
- More Options for Open-Ended Comments



Survey Launch

- Survey Deployment
 - Timing
 - Method
- Responses
 - Deadline
 - Analysis
- Report to Committee
- Next Steps



Background

SCAG is launching a new Open Data/Big Data—Smart and Connected SCAG Region Committee to help the region meet the data related opportunities and challenges of the next decade. The committee will be tasked with identifying initiatives that increase the use of data and analytics in regional and local planning.

To ensure that the process is productive and engaging, SCAG is conducting outreach to stakeholders across our region to identify current data needs and opportunities. Please take a few minutes to answer our short survey.

* 1. First Name

* 2. Last Name

* 3. Email

4. What is the name of your organization?

5. What is your role in your organization?

- Elected official
- City Manager
- City Staff
- Consultant
- SCAG Employee
- Member of the Public
- Student
- Other (please specify)

6. Who would be the best person within your organization to contact about being a part of regional conversations on big data and open data?

First Name

Last Name

Email

Local Data Needs

7. In what areas of local policy making do you have the greatest challenge in securing local or regional data to make informed decisions? (Check all that apply)

	Challenging to Secure	Can Secure Some Data	Easy to Secure
Land Use	<input type="radio"/>	<input type="radio"/>	<input type="radio"/>
Transportation	<input type="radio"/>	<input type="radio"/>	<input type="radio"/>
Water	<input type="radio"/>	<input type="radio"/>	<input type="radio"/>
Energy	<input type="radio"/>	<input type="radio"/>	<input type="radio"/>
Health	<input type="radio"/>	<input type="radio"/>	<input type="radio"/>
Demographic Changes	<input type="radio"/>	<input type="radio"/>	<input type="radio"/>
Economic Development	<input type="radio"/>	<input type="radio"/>	<input type="radio"/>
Climate Adaptation	<input type="radio"/>	<input type="radio"/>	<input type="radio"/>
Education	<input type="radio"/>	<input type="radio"/>	<input type="radio"/>
Open Space	<input type="radio"/>	<input type="radio"/>	<input type="radio"/>
Housing	<input type="radio"/>	<input type="radio"/>	<input type="radio"/>
Environmental Justice	<input type="radio"/>	<input type="radio"/>	<input type="radio"/>
Public Safety/Law Enforcement	<input type="radio"/>	<input type="radio"/>	<input type="radio"/>
Other	<input type="radio"/>	<input type="radio"/>	<input type="radio"/>

Please Specify Other or Add Additional Comments

8. In what areas of local policymaking do you have sufficient amounts of data to make informed decisions? (Check all that apply)

	Need Additional Data	Have Some Data for Basic Analysis	Have Enough Data for Standard Analysis	Have Robust Data for Nuanced Analysis
Land Use	<input type="radio"/>	<input type="radio"/>	<input type="radio"/>	<input type="radio"/>
Transportation	<input type="radio"/>	<input type="radio"/>	<input type="radio"/>	<input type="radio"/>
Water	<input type="radio"/>	<input type="radio"/>	<input type="radio"/>	<input type="radio"/>
Energy	<input type="radio"/>	<input type="radio"/>	<input type="radio"/>	<input type="radio"/>
Health	<input type="radio"/>	<input type="radio"/>	<input type="radio"/>	<input type="radio"/>
Demographic Changes	<input type="radio"/>	<input type="radio"/>	<input type="radio"/>	<input type="radio"/>
Economic Development	<input type="radio"/>	<input type="radio"/>	<input type="radio"/>	<input type="radio"/>
Climate Adaptation	<input type="radio"/>	<input type="radio"/>	<input type="radio"/>	<input type="radio"/>
Education	<input type="radio"/>	<input type="radio"/>	<input type="radio"/>	<input type="radio"/>
Open Space	<input type="radio"/>	<input type="radio"/>	<input type="radio"/>	<input type="radio"/>
Housing	<input type="radio"/>	<input type="radio"/>	<input type="radio"/>	<input type="radio"/>
Environmental Justice	<input type="radio"/>	<input type="radio"/>	<input type="radio"/>	<input type="radio"/>
Public Safety/Law Enforcement	<input type="radio"/>	<input type="radio"/>	<input type="radio"/>	<input type="radio"/>
Other	<input type="radio"/>	<input type="radio"/>	<input type="radio"/>	<input type="radio"/>

Please Specify Other or Add Additional Comments

9. How much capacity in the following categories does your agency have to capture and use data to inform decision-making?

	None	Less Than Optimal	Sufficient	Optimal
Labor/Staff Time	<input type="radio"/>	<input type="radio"/>	<input type="radio"/>	<input type="radio"/>
Hardware	<input type="radio"/>	<input type="radio"/>	<input type="radio"/>	<input type="radio"/>
Software	<input type="radio"/>	<input type="radio"/>	<input type="radio"/>	<input type="radio"/>
Expertise	<input type="radio"/>	<input type="radio"/>	<input type="radio"/>	<input type="radio"/>
Data Rights/Licensing Fees	<input type="radio"/>	<input type="radio"/>	<input type="radio"/>	<input type="radio"/>
Financial	<input type="radio"/>	<input type="radio"/>	<input type="radio"/>	<input type="radio"/>
Data Security	<input type="radio"/>	<input type="radio"/>	<input type="radio"/>	<input type="radio"/>
Dashboards/Open Data	<input type="radio"/>	<input type="radio"/>	<input type="radio"/>	<input type="radio"/>
Public Engagement Tool Development	<input type="radio"/>	<input type="radio"/>	<input type="radio"/>	<input type="radio"/>

Please provide any additional information about needs related to data that your jurisdiction might have.

10. What data do you collect and report that might be helpful in understanding larger regional trends in housing, transportation, land-use, environment, etc.? (Check all that apply)

- Land Use
- Transportation
- Water
- Energy
- Health
- Demographic Changes

- Economic Development
- Climate Adaptation
- Education
- Law Enforcement
- Open Space
- Housing
- Environmental Justice
- Sensor Data
- Emergency Response
- Active Transportation
- Internal Data (not shared externally)
- Other

Please Specify Other or Add Additional Comments

11. Does your agency have a GIS department or other avenue for mapping data to better understand local policy issues?

- Internal GIS Department
- External GIS Service (e.g., consultant)
- No GIS Service

12. How does your organization share information across departments?

- Internal Shared Data Platforms (i.e. enterprise software or dashboards)
- Direct Communication (e.g. email, phone calls, face to face meetings, etc.)
- Intranet Website
- Internal Mapping or Data Applications (read only)
- Open Data Portal
- Other (please specify)

13. Would your organization be willing/interested in sharing data and/or resources with SCAG?

- Yes
- No

Regional Data Support

14. What role should SCAG play in the realm of big/open data and smart cities?

	No Role	Minor Role	Major Role	No Opinion
Convene Data Users	<input type="radio"/>	<input type="radio"/>	<input type="radio"/>	<input type="radio"/>
Develop Data Tools	<input type="radio"/>	<input type="radio"/>	<input type="radio"/>	<input type="radio"/>
Standardize Data	<input type="radio"/>	<input type="radio"/>	<input type="radio"/>	<input type="radio"/>
Coordinate Data Collection	<input type="radio"/>	<input type="radio"/>	<input type="radio"/>	<input type="radio"/>
Host Regionally Significant Data Sets	<input type="radio"/>	<input type="radio"/>	<input type="radio"/>	<input type="radio"/>
Develop New Data Sets	<input type="radio"/>	<input type="radio"/>	<input type="radio"/>	<input type="radio"/>
Model/Sample RFPs or Templates	<input type="radio"/>	<input type="radio"/>	<input type="radio"/>	<input type="radio"/>
Promote Best Practices	<input type="radio"/>	<input type="radio"/>	<input type="radio"/>	<input type="radio"/>
Partner with Universities	<input type="radio"/>	<input type="radio"/>	<input type="radio"/>	<input type="radio"/>
Other	<input type="radio"/>	<input type="radio"/>	<input type="radio"/>	<input type="radio"/>

Please Specify Other

15. How often do you use SCAG data sources for your day-to-day work?

- Daily
- Weekly
- Monthly
- Rarely
- Never

16. What types of data could SCAG provide that would be most beneficial to you? (Check all that apply)

- GIS Datasets
- City Level Data
- Census Data
- Parcel Data
- General Plan Data
- Transportation Data
- Housing Data
- Economic Data
- Health Data
- Public Safety/Law Enforcement Data
- Other

Please Specify Other or Add Additional Comments

17. How could SCAG best promote existing data sets?

	I Don't Like This Idea	This is an Ok Idea	This is a Great Idea
Host Hackathons	<input type="radio"/>	<input type="radio"/>	<input type="radio"/>
Conduct In Person Trainings	<input type="radio"/>	<input type="radio"/>	<input type="radio"/>
Host Webinars	<input type="radio"/>	<input type="radio"/>	<input type="radio"/>
Develop Regional Initiatives	<input type="radio"/>	<input type="radio"/>	<input type="radio"/>
Provide Online Resources	<input type="radio"/>	<input type="radio"/>	<input type="radio"/>

Other Ideas? (please specify)

Follow Up

18. Are you aware of other regional data collaboratives or partnerships that SCAG should engage through this effort?

Name	<input type="text"/>
Contact	<input type="text"/>
Email	<input type="text"/>