

% of Low Income Households without Broadband by Blockgroup*

- Less than 5%
- 5 - 10%
- 11 - 20%
- 21 - 30%
- More than 30%

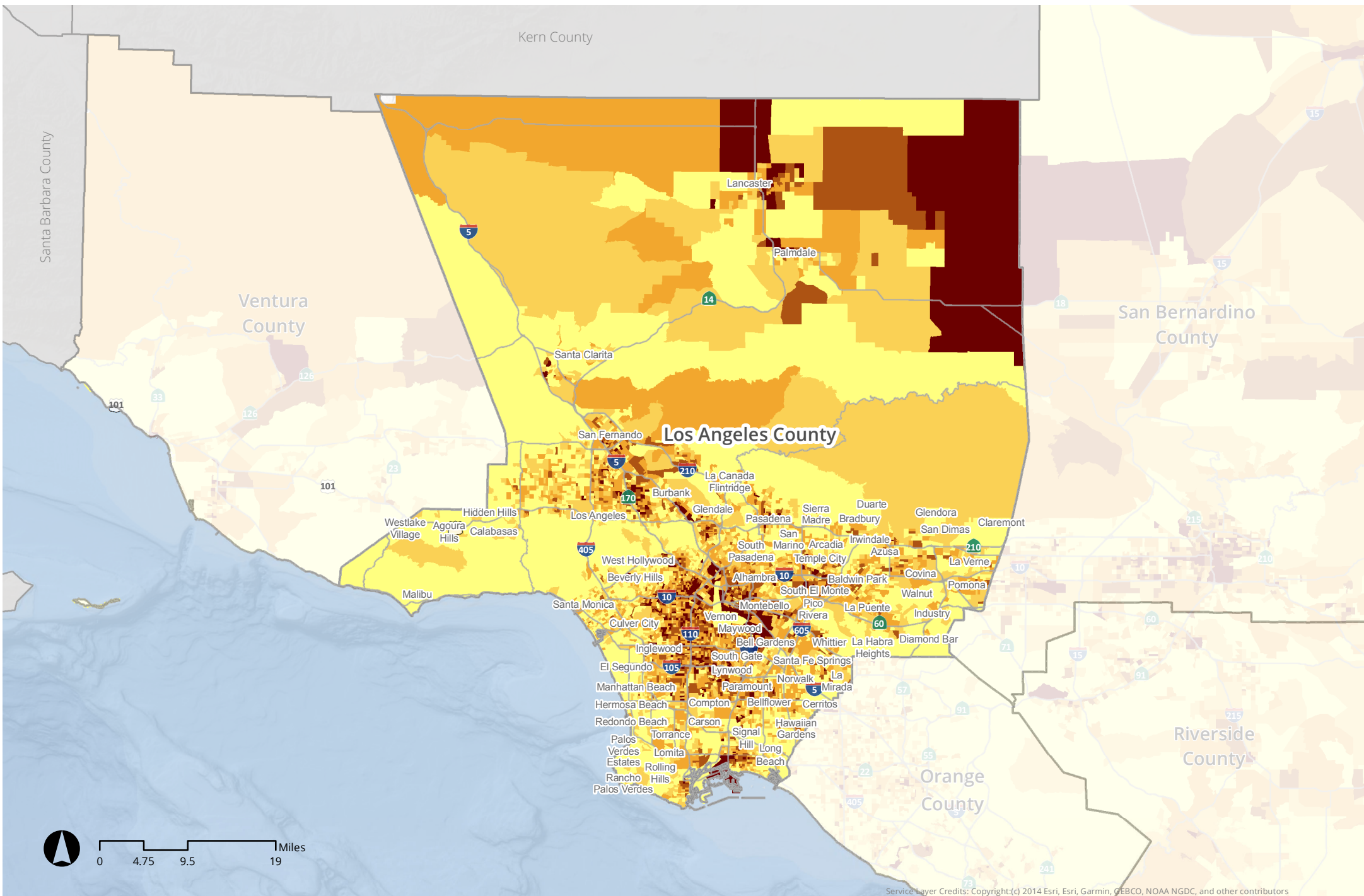
* SCAG region low income households without broadband is 10%.

Low Income Households without Broadband for Imperial County



Note: Low Income households are defined by reported annual income (about \$50K) below 200% of federal poverty threshold.

Source: ACS 2015-2019 5-Year Summary File



% of Low Income Households without Broadband by Blockgroup*

- Less than 5%
- 5 - 10%
- 11 - 20%
- 21 - 30%
- More than 30%

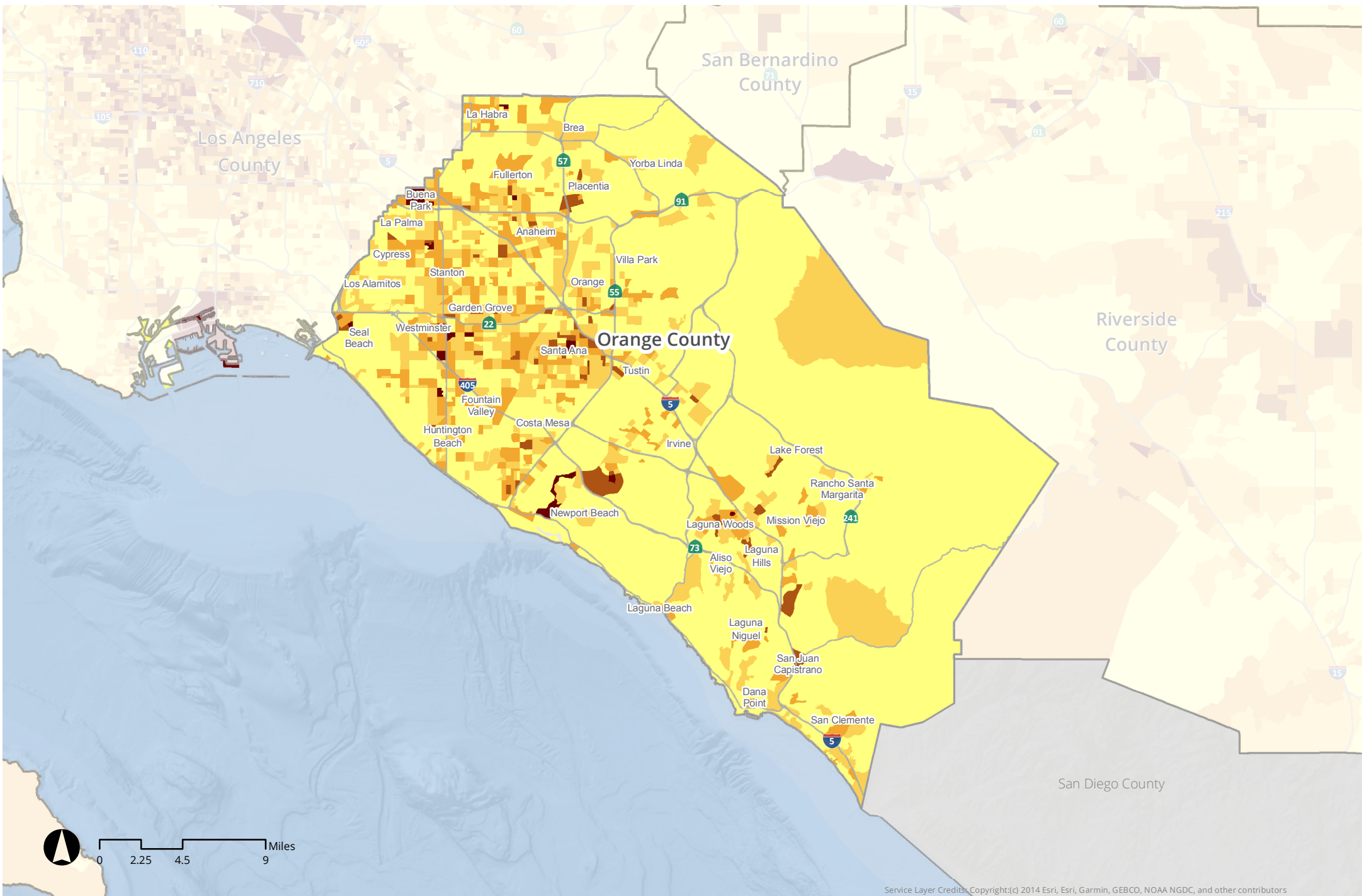
* SCAG region low income households without broadband is 10%.

Low Income Households without Broadband for Los Angeles County



Note: Low Income households are defined by reported annual income (about \$50K) below 200% of federal poverty threshold.

Source: ACS 2015-2019 5-Year Summary File



% of Low Income Households without Broadband by Blockgroup*

- Less than 5%
- 5 - 10%
- 11 - 20%
- 21 - 30%
- More than 30%

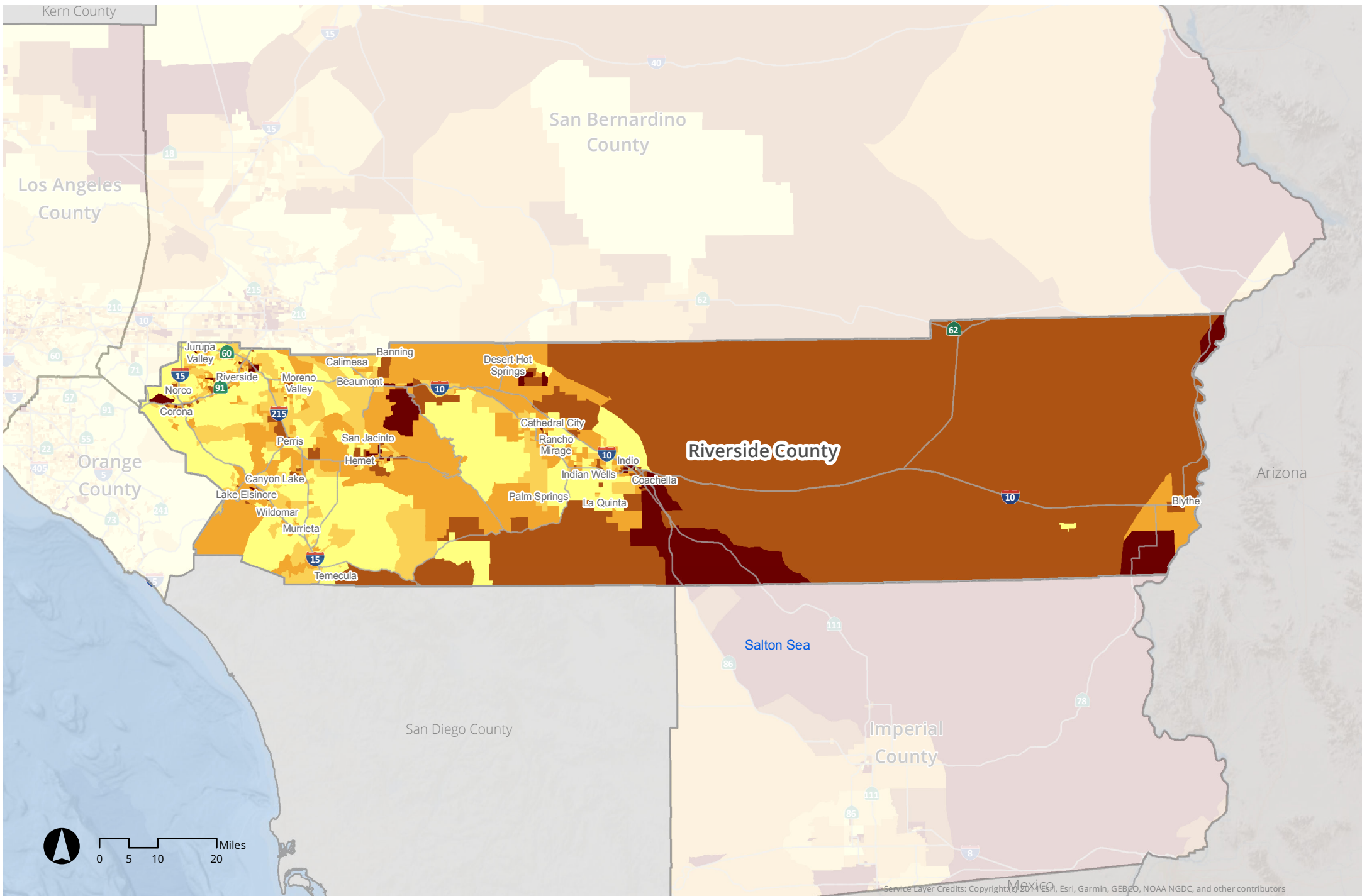
* SCAG region low income households without broadband is 10%.

Low Income Households without Broadband for Orange County



Note: Low Income households are defined by reported annual income (about \$50K) below 200% of federal poverty threshold.

Source: ACS 2015-2019 5-Year Summary File



% of Low Income Households without Broadband by Blockgroup*

- Less than 5%
- 5 - 10%
- 11 - 20%
- 21 - 30%
- More than 30%

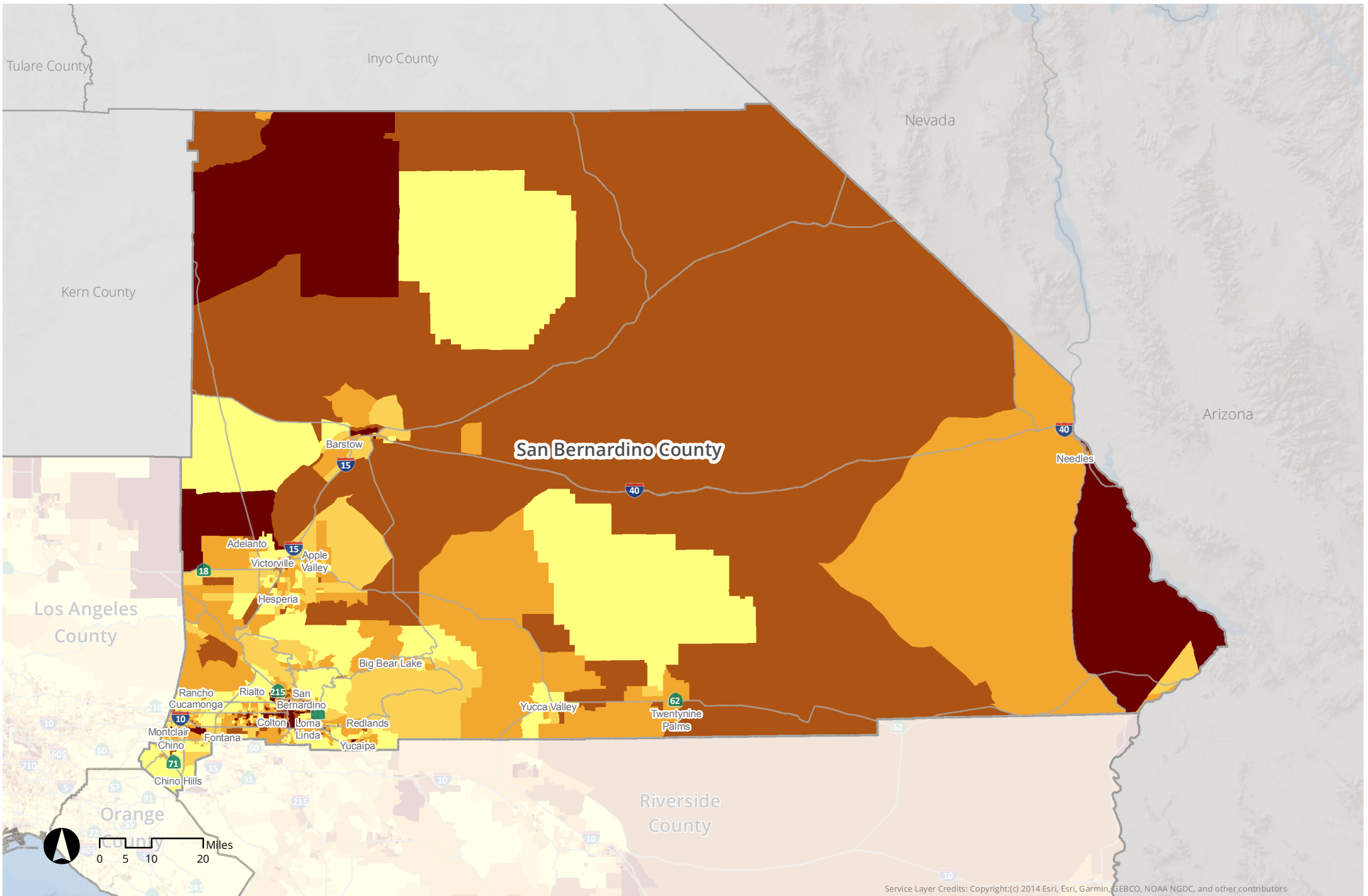
* SCAG region low income households without broadband is 10%.

Low Income Households without Broadband for Riverside County



Note: Low Income households are defined by reported annual income (about \$50K) below 200% of federal poverty threshold.

Source: ACS 2015-2019 5-Year Summary File



% of Low Income Households without Broadband by Blockgroup*

- Less than 5%
- 5 - 10%
- 11 - 20%
- 21 - 30%
- More than 30%

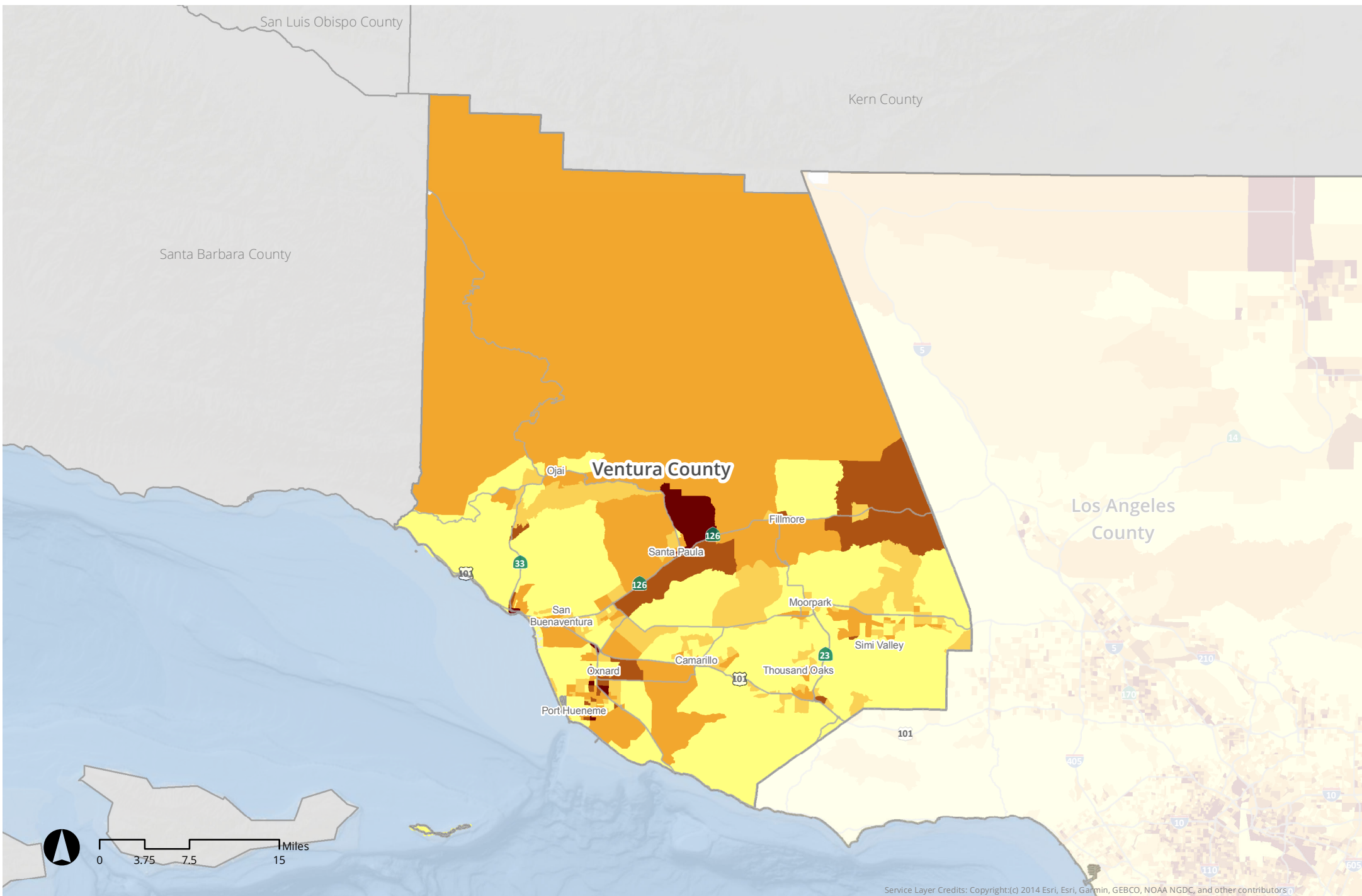
* SCAG region low income households without broadband is 10%.

Low Income Households without Broadband for San Bernardino County



Note: Low Income households are defined by reported annual income (about \$50K) below 200% of federal poverty threshold.

Source: ACS 2015-2019 5-Year Summary File



% of Low Income Households without Broadband by Blockgroup*

- Less than 5%
- 5 - 10%
- 11 - 20%
- 21 - 30%
- More than 30%

* SCAG region low income households without broadband is 10%.

Low Income Households without Broadband for Ventura County



Note: Low Income households are defined by reported annual income (about \$50K) below 200% of federal poverty threshold.

Source: ACS 2015-2019 5-Year Summary File