



# Green Region Resource Areas Methodology for SCAG's Local Data Exchange (LDX)

July 7, 2022

[WWW.SCAG.CA.GOV](http://WWW.SCAG.CA.GOV)



Foundations  
& Frameworks

Data Collection  
& Policy  
Development

Outreach  
& Analysis

Draft Plan  
& Adoption

## COMPLETED

- ✓ Regional & County Forecast
- ✓ Relunched Working Groups
- ✓ Regional Data Platform Launch



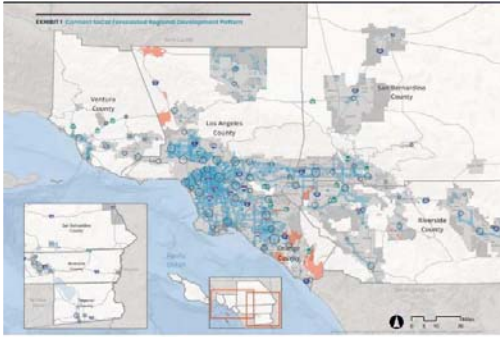
## LOCAL DATA EXCHANGE (LDX)

- Soft Launch – February 23<sup>rd</sup>
- Complete Launch – May 23<sup>rd</sup>
- Input Deadline – December 2<sup>nd</sup>

**CONNECT SOCIAL 2024: DEVELOPMENT UPDATE**

# Objective: Forecasted Regional Development Pattern

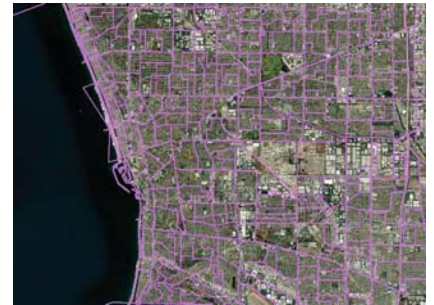
“set forth a forecasted development pattern for the region, which, when integrated with the transportation network, and other transportation measures and policies, will reduce the greenhouse gas emissions from automobiles and light trucks to achieve, if there is a feasible way to do so, the greenhouse gas emission reduction targets approved by the state board, and (viii) allow the regional transportation plan to comply with Section 176 of the federal Clean Air Act (42 U.S.C. Sec. 7506).” California Government Code 65080(b)(vii)



Connect SoCal 2020  
Forecasted Regional Development Pattern

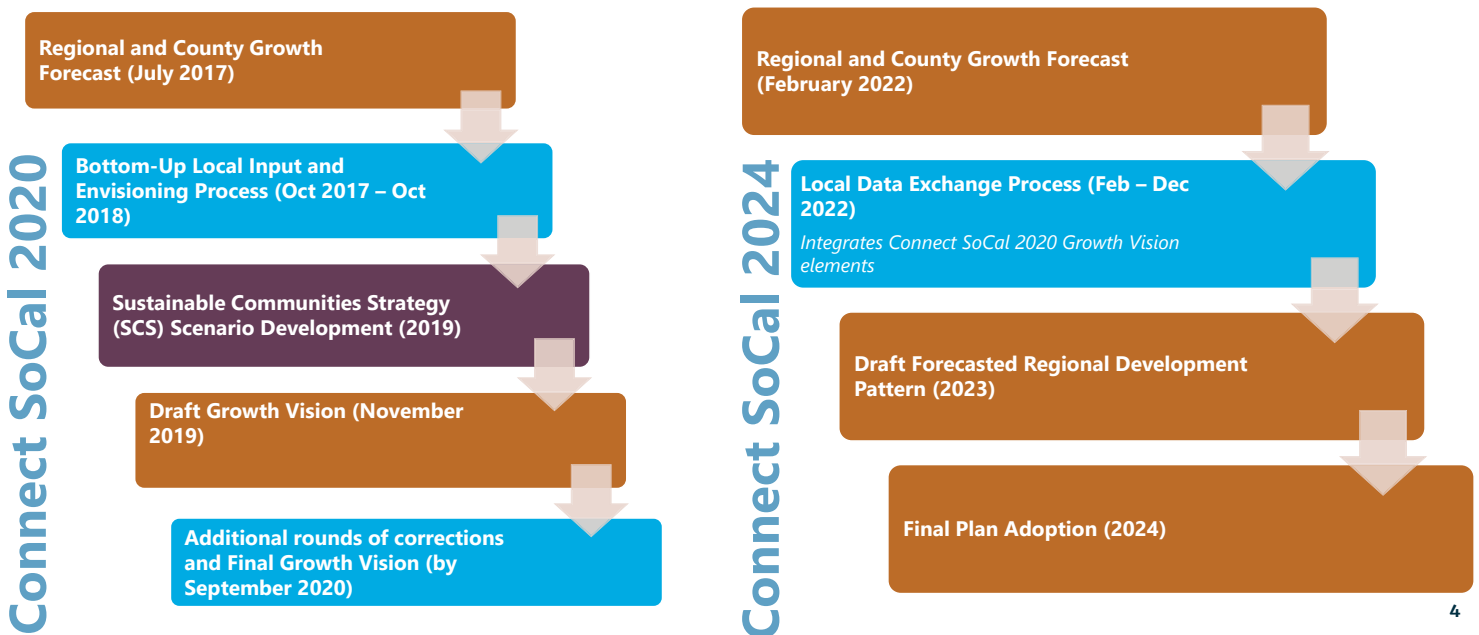
## LDX GETS HERE BY BEING:

- ✓ Rooted in local planning
- ✓ Steered by a regional vision
- ✓ Aligned with state and federal policy



Sample of TAZs in the SCAG region

# Objective: Forecasted Regional Development Pattern



## SB 375 Resource Areas (Section 65080.01)

- 1) All publicly owned **parks and open space**
- 2) **Open space or habitat areas protected** by natural community conservation plans, habitat conservation plans, and other adopted natural resource protection plans
- 3) **Habitat for species** identified as candidate, fully protected, sensitive, or species of special status by local, state, or federal agencies or protected by the federal Endangered Species Act of 1973, the California Endangered Species Act, or the Native Plant Protection Act
- 4) **Lands subject to conservation or agricultural easements** for conservation or agricultural purposes by local governments, special districts, or nonprofit 501(c)(3) organizations, areas of the state designated by the State Mining and Geology Board as areas of statewide or regional significance pursuant to Section 2790 of the Public Resources Code, and lands under Williamson Act contracts
- 5) Areas designated for **open-space or agricultural uses in adopted open-space elements or agricultural elements** of the local general plan or by local ordinance
- 6) **Areas containing biological resources** as described in Appendix G of the CEQA Guidelines that may be significantly affected by the sustainable communities strategy or the alternative planning strategy
- 7) An **area subject to flooding** where a development project would not, at the time of development in the judgment of the agency, meet the requirements of the National Flood Insurance Program or where the area is subject to more protective provisions of state law or local ordinance.

## Connect SoCal 2024: Green Region Resource Areas

- Derived from SB 375 + Connect SoCal 2020 strategies
- Highlight areas where future growth is not encouraged due to sensitivity to natural hazards, biological sensitivities, and resilience to a changing climate
- Layers are consistent with Connect SoCal 2020 Plan but have been updated to reflect the latest & greatest data
- Green Region Resources Areas (GRRAs) consist of 10 topics, spanning three categories:
  - *Resilience*
  - *Habitat*
  - *Administrative/Working Lands*
- Layers have been combined for the purposes of the Preliminary Growth Forecast
- In the LDX materials, GRRAs maps consist of 10 topic maps + 4 multi-benefit asset maps

# SCAG Data/Map Book and RDP LDX Web Contents

CATEGORY	LAYER NAME	REVIEW TYPE	CATEGORY	LAYER NAME	REVIEW TYPE
Land Use	General Plan	Update/Corrections	Green Region Resource Areas (SB 375)	Resilience (Flood areas, coastal inundation, wildfire risk)	Reference Only
	Zoning	Update/Corrections		Open Space/Habitat (Open space and parks, endangered species and plants, sensitive habitat areas, natural community and habitat conservation plans)	Reference Only
	Existing Land Use	Update/Corrections			
	Specific Plan Land Use	Update/Corrections			
	Key Entitlements	Update/Corrections			
Priority Development	Neighborhood Mobility Areas	Optional	Administrative/Working Lands (Tribal nations, military installations, farmlands)	Reference Only	
	Livable Corridors	Optional			
	Job Centers	Optional	City Boundary and Sphere of Influence	Reference Only	
	Housing Trajectory	Update/Corrections and site inventory upload			
Transportation	High Quality Transit Areas	Reference Only	Geographical Boundaries	Census Tract	Reference Only
	Transit Priority Areas	Reference Only		TAZ (Tier2)	Reference Only
	Regional Bikeways	Optional	Growth (available May 2022)	Jurisdiction-level projections of households and employment (2019, 2035, 2050)	Update/Corrections
	Regional Truck Routes	Optional		Tier 2 TAZ-level projections of households and employment (2019, 2035, 2050)	Update/Corrections

Digital versions of these data layers are available to local jurisdictions through their RDP LDX login.

## Connect SoCal 2024: Green Region Resource Areas Datasets

GRRR Category	GRRR Topic	Underlying Datasets
Resilience	Flood Areas	FEMA Effective: 100-Year Floodplains, 2017, FEMA
	Coastal Inundation (Sea Level Rise)	Coastal Storm Modeling System (CoSMoS) for Southern California, v3.0, Phase 2, 2018, USGS
	Wildfire Risk	Fire Hazard Severity Zones Local Responsibility Areas Maps, 2008, CAL FIRE
		Fire Hazard Severity Zones State Responsibility Areas Maps, 2007, CAL FIRE
Habitat / Open Space	Open Space and Parks	Save Our Agricultural Resources (SOAR), 2017, County of Ventura
		California Conservation Easement Database (CCED), 2021, Multiple sources
		California Protected Areas Database (CPAD), 2021, Multiple sources
	Endangered Species and Plants	California Natural Diversity Database, 2017, CA Department of Fish and Wildlife
	Sensitive Habitat Areas	National Wetlands Inventory, 2020, US Fish and Wildlife Services
		2015 Areas of Conservation Emphasis (ACEIIV2), 2015, CA Department of Fish and Wildlife
		Connect SoCal 2020 Habitat Connectivity Layer, 2020, SCAG; South Coast Missing Linkages (SCML) Wildlife Corridors, 2018, Conservation Biology Institute; and California Essential Habitat Connectivity Project, 2010, CA Department of Fish and Wildlife
Natural Community and Habitat Conservation Plans	Conservation Plan Boundaries, Habitat Conservation Plans (HCPs) and Natural Community Conservation Plans (NCCPs), 2021, CA Department of Fish and Wildlife	
Administrative/ Working Lands	Tribal Nations	American Indian Reservations / Federally Recognized Tribal Entities, 2021, CalOES
	Military Installations	USA Department of Defense Lands, 2018, US Department of Defense
	Farmlands	California Important Farmland, Farmland Mapping & Monitoring Program (FMMP), 2018, CA Department of Conservation

# Connect SoCal 2024: Green Region Resource Areas (GRRRA)

GRRRA Topics (10)

GRRRA Categories

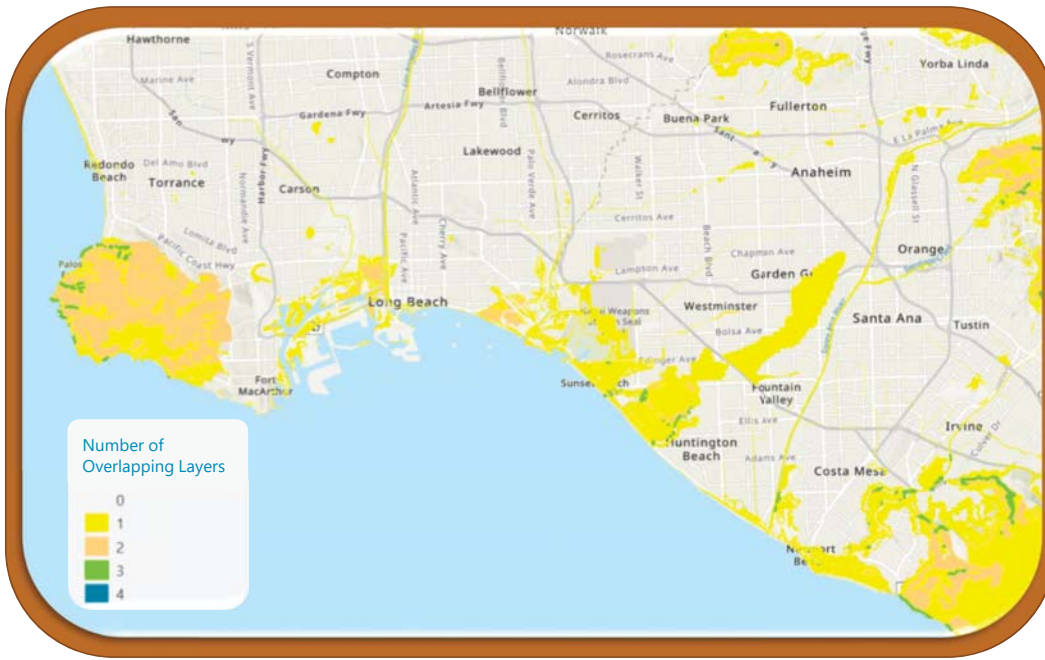
<b>Resilience</b>	<ul style="list-style-type: none"> <li>• 100-Year Flood Plains</li> <li>• Coastal Inundation (Sea Level Rise)</li> <li>• Wildfire Risk</li> </ul>
<b>Habitat</b>	<ul style="list-style-type: none"> <li>• Open Space &amp; Parks</li> <li>• Endangered Species &amp; Plants</li> <li>• Sensitive Habitat Areas</li> <li>• Natural Community &amp; Habitat Conservation Plans</li> </ul>
<b>Administrative/ Working Lands</b>	<ul style="list-style-type: none"> <li>• Tribal Nations</li> <li>• Military Installations</li> <li>• Farmlands</li> </ul>

## Green Region Resource Areas: Resilience

<b>Resilience</b>
100-Year Flood Plains (Flood Risk)
Coastal Inundation (Sea Level Rise)
Wildfire Risk



# Resilience Multi-Benefit Asset Map



# Green Region Resource Areas: Habitat/Open Space

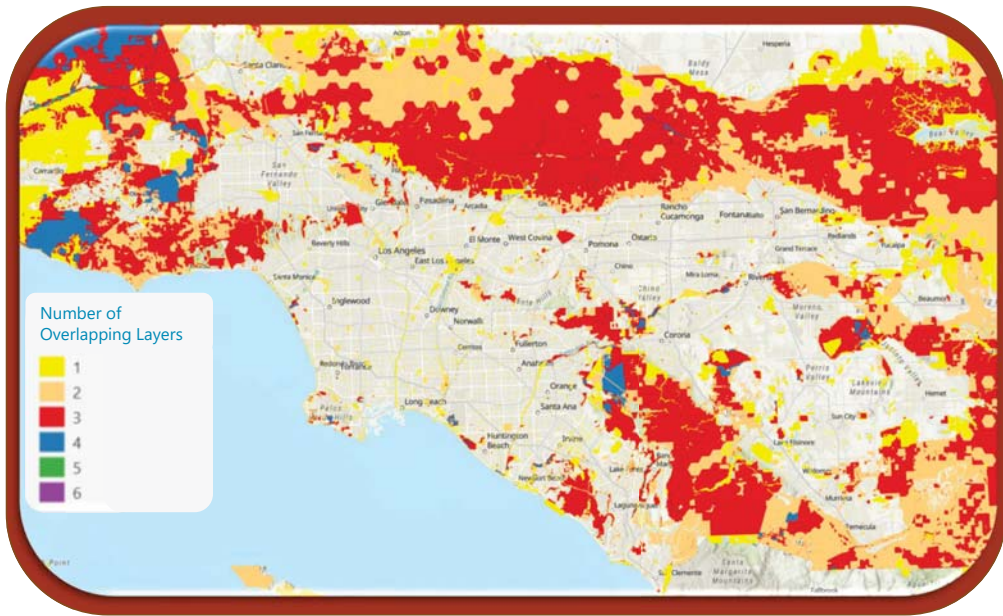
## Habitat / Open Space

- Open Space & Parks
- Sensitive Habitat Areas
- Endangered Species & Plants\*
- Natural Community & Habitat Conservation Plans\*



Asterisk (\*) indicates layers provided for reference in Data/Map Books, but not factored into Preliminary Growth Forecast.

# Habitat/Open Space Multi-Benefit Asset Map



# Green Region Resource Areas: Administrative/Working Lands

## Administrative/ Working Lands

Tribal Nations

Military Installations

Farmlands

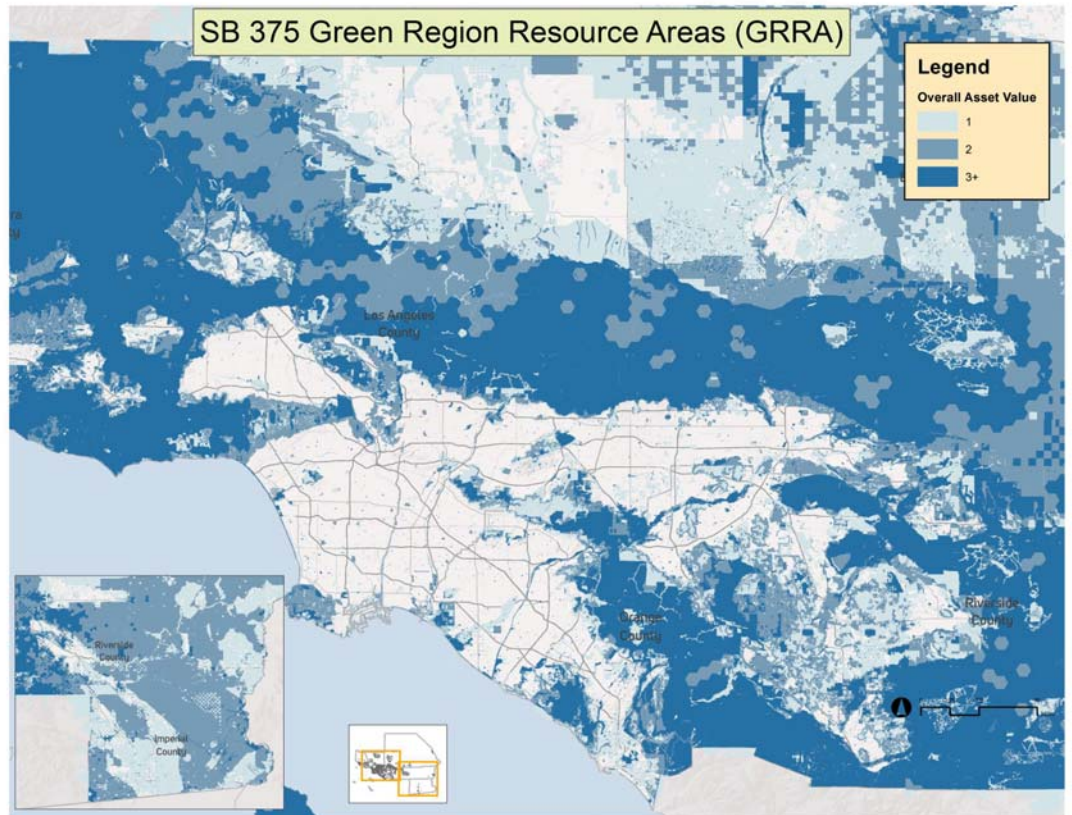


# Administrative/Working Lands Space Multi-Benefit Asset Map



## Consolidated Green Region Resource Areas

- Identifies overlaps of:
  - Flood areas
  - Sea level rise
  - Wildfire risk
  - Open space and parks
  - Sensitive habitat areas
  - Tribal nations
  - Military installations
  - Farmlands



Source: SCAG. \*Excludes districts 28 and 29 (Long Beach & Aviston) which are not geographically distinct. \*\*2018 district average population is 245,000.

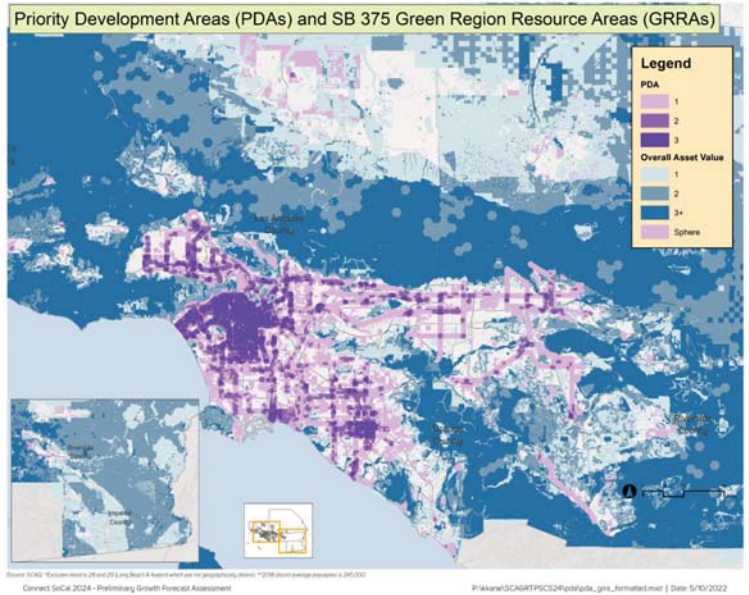


# Preliminary Small Area Household Forecast Methodology

1. Estimate remaining general plan capacity and control to county/regional projection
2. Add RHNA/housing element rezone sites if needed
3. Growth prioritization steps
  - Increase in Priority Development Areas (PDAs)
  - Minimize in Green Region Resource Areas (GRRAs)

Number of Priority Development Areas	4	3	2	1	0	4	3	2	1	0	4	3	2	1	0	4	3	2	1	0
Number of Green Region Resource Areas	0	0	0	0	0	1	1	1	1	1	2	2	2	2	2	3+	3+	3+	3+	3+
Step #	1	2	3	4	5	6	7	8	9	10	11	12	13	14	15	16	17	18	19	20

Connect SoCal 2020's preliminary forecast only used Step 1.



## THANK YOU!

For more information, please visit:

<https://hub.scag.ca.gov/pages/idx>