



SOUTHERN CALIFORNIA  
ASSOCIATION OF GOVERNMENTS  
900 Wilshire Blvd., Ste. 1700  
Los Angeles, CA 90017  
T: (213) 236-1800  
www.scag.ca.gov

REGIONAL COUNCIL OFFICERS

President  
**Jan C. Harnik, Riverside County  
Transportation Commission**

First Vice President  
**Carmen Ramirez, County of Ventura**

Second Vice President  
**Art Brown, Buena Park**

Immediate Past President  
**Clint Lorimore, Eastvale**

COMMITTEE CHAIRS

Executive/Administration  
**Jan C. Harnik, Riverside County  
Transportation Commission**

Community, Economic &  
Human Development  
**Frank Yokoyama, Cerritos**

Energy & Environment  
**Deborah Robertson, Rialto**

Transportation  
**Ray Marquez, Chino Hills**

## MEETING OF THE

# TECHNICAL WORKING GROUP

*Thursday, May 19, 2022*  
*10:00 a.m. – 12:00 p.m.*

### JOIN ZOOM MEETING

[HTTPS://SCAG.ZOOM.US/J/142774637](https://scag.zoom.us/j/142774637)

OR

### DIAL BY YOUR LOCATION

+1 669 900 6833 US TOLL

+1 346 248 7799 US TOLL

MEETING ID: 142 774 637

If members of the public wish to review the attachments or have any questions on any of the agenda items, please contact Kevin Kane at (213) 236-1828 or [kane@scag.ca.gov](mailto:kane@scag.ca.gov). Agendas for the Technical Working Group are also available at <https://scag.ca.gov/technical-working-group>

SCAG, in accordance with the Americans with Disabilities Act (ADA), will accommodate persons who require a modification of accommodation in order to participate in this meeting. SCAG is also committed to helping people with limited proficiency in the English language access the agency's essential public information and services. You can request such assistance by calling (213) 630-1402. We request at least 72 hours (three days) notice to provide reasonable accommodations and will make every effort to arrange for assistance as soon as possible.

## Agenda

1. Preliminary Growth Allocation Methodology  
*Kevin Kane*  
45 minutes  
[Packet Page 6](#)
2. Local Data Exchange (LDX) Survey  
*Lyle Janicek*  
15 minutes  
[Packet Page 22](#)
3. Update on Draft Connect SoCal 2024 Goals and Performance Measures  
*Mike Gainor*  
15 minutes  
[Packet Page 37](#)
4. REAP 2.0 Draft Framework and Outreach Process  
*Sarah Jepson*  
20 minutes  
[Packet Page 48](#)
5. Regional Advanced Mitigation Advisory Task Group (RAMP-ATG) & Greenprint Update  
*Kimberly Clark*  
5 minutes

## MARCH 17, 2022: MEMBERSHIP ATTENDANCE

### LAND USE AUTHORITIES

Aube, Nicolle	Senior Analyst	City of Huntington Beach
Gable, Emily	City Planner	City of Los Angeles
Kim, Susan	Director of Community & Economic Dev.	City of La Habra
Murray, David	Principal Planner	City of Riverside
Pallini-Tipton, Conni	Senior City Planner	City of Los Angeles
Shiomoto-Lohr, Gail	Regional Planning Consultant	City of Mission Viejo
Taylor, Matthew	Senior Planner	City of Riverside
Wikstrom, Alexander	Transportation Planning Associate II	City of Los Angeles

### REGIONAL PARTNERS

Huddleston, Lori	Transportation Planning Manager	LA Metro
Lee, Josh	Chief of Planning	SBCTA
Logasa, Brianne	Management Analyst	SGVCOG
Primmer, Marnie	Executive Director	OCCOG
Whiteaker, Warren	Principal Transportation Analyst	OCTA

### REGULATORY & COORDINATING AGENCIES

*None in attendance*

### FIELD EXPERTS

Diep, Deborah	Director	CDR/CSUF
Rodnyansky, Seva	Assistant Professor	Occidental College

### ALTERNATES, SELF-IDENTIFIED NON-MEMBERS & PUBLIC ATTENDEES

Davis, Martha	Executive Manager of Policy	Inland Empire Utilities Agency
Equina, Justin	Associate Planner	City of Irvine
Gackstetter, Ryan	Senior Planner	City of Chino Hills
Jacobs, Christy	Associate GIS Planner	City of Riverside
Randle, Yuritzky	Associate Planner	County of Orange
Smith, Steve	Director of Planning	SBCTA
Woods, Brady	Principal Planner	RRM Design Group

# SCAG TECHNICAL WORKING GROUP MEETING SUMMARY

March 17, 2022

10:00 a.m. – 12:00 p.m.

## 1. EQUITY ANALYSIS APPROACH (FORMERLY ENVIRONMENTAL JUSTICE ANALYSIS)

Anita Au and Annaleigh Ekman presented on the updated Equity Analysis Approach which further expands on the previously conducted Environmental Justice Analysis. They provided an overview on the development process, the shift to analyzing Prioritized Equity Populations and Areas (PEPA), and the consideration of proposed Equity Performance Indicators. Josh Lee (SBCTA), Deborah Diep (CDR/CSUF), and Gail Shiimoto-Lohr (City of Mission Viejo) provided comments for discussion.

## 2. DRAFT CONNECT SOCAL 2024 GOALS & PERFORMANCE MEASURES FOR PLAN EVALUATION

Sarah Dominguez and Michael Gainor presented on the draft goals, vision, and associated performance measures for the upcoming Connect SoCal 2024 that is currently in development. In addition to an overview of the purpose of the goals and vision, they described the connection between the performance measures and goals and invited attendees to provide feedback by the deadline. Warren Whiteaker (OCTA), Matthew Taylor (City of Riverside), Emily Gable (City of Los Angeles), Gail Shiimoto-Lohr, and Deborah Diep provided comments.

## 3. FEBRUARY 23<sup>RD</sup> REGIONAL DATA PLATFORM (RDP) & LOCAL DATA EXCHANGE (LDX) SOFT LAUNCH AND NEXT STEPS

Kevin Kane and Tom Vo provided updates to the Growth Forecast data, and the RDP/LDX “soft launch,” including clarification on the type of data included with the soft launch and the data to be released with the complete launch of the RDP/LDX in May. They also provided an overview of available tools, and upcoming dates for jurisdictions to note for providing feedback. Seva Rodnyansky (Occidental College), Conni Pallini-Tipton (City of Los Angeles), Matthew Taylor, Josh Lee, Deborah Diep, and Gail Shiimoto-Lohr partook in the discussion.

## 4. LDX SURVEY

Lyle Janicek presented a high-level overview of the LDX Survey that is in development for Connect SoCal 2024, including the survey’s purpose and objectives and invitation for survey feedback. No comments were provided during the meeting.

## 5. GREEN REGION RESOURCE AREAS - METHODOLOGY

Lorianne Esturas presented on the Green Region Resources Areas (GRRRA) to be integrated into Connect SoCal 2024 and the methodology involved. This included a review of the 2020 Sustainable Communities

Strategy, growth constraints previously used, and the purpose of the GRRAs in the upcoming plans, and the underlying datasets. Gail Shiimoto-Lohr, Deborah Diep, Warren Whiteaker, and Josh Lee provided comments for discussion.

## 6. DRAFT REGIONAL ADVANCED MITIGATION POLICY (RAMP) FRAMEWORK

Kim Clark presented on the Draft RAMP Framework, which included an overview on how RAMP will support the goals and strategies of Connect SoCal 2020, the regional benefits, and a summary of feedback received from country transportation commissions. Gail Shiimoto-Lohr and Warren Whiteaker participated in discussion.

# Preliminary Growth Forecast Methodology

And integration into Connect SoCal 2024's Local Data Exchange (LDX) process

Kevin Kane, PhD

Program Manager, Demographics & Growth Vision

May 19, 2022

[www.scag.ca.gov](http://www.scag.ca.gov)



## Presentation Outline



- Preliminary growth forecast recap
- LDX and the steps to a Forecasted Regional Development Pattern - *which ingredients are new?*
- Preliminary small area (jurisdiction and TAZ) growth forecast methodology - *what's the recipe?*
- LDX review – *what does SCAG need from cities for it to be 'fully baked' ?*
- Proposed review process and integration into Connect SoCal 2024

# Connect SoCal 2024: Development Update



## COMPLETED

- ✓ Regional & County Forecast
- ✓ Relaunched Working Groups
- ✓ Regional Data Platform Launch

## LOCAL DATA EXCHANGE (LDX)

- Soft Launch – February 23<sup>rd</sup>
- Complete Launch – May 23<sup>rd</sup>
- Input Deadline – December 2<sup>nd</sup>

3

# Four key forecast scales



4

## Region-level projection



Source: Connect SoCal 2024 Preliminary Projections

5

## Objective: Forecasted Regional Development Pattern

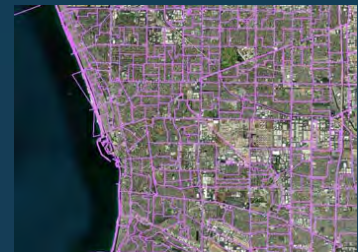


"set forth a forecasted development pattern for the region, which, when integrated with the transportation network, and other transportation measures and policies, will reduce the greenhouse gas emissions from automobiles and light trucks to achieve, if there is a feasible way to do so, the greenhouse gas emission reduction targets approved by the state board, and (viii) allow the regional transportation plan to comply with Section 176 of the federal Clean Air Act (42 U.S.C. Sec. 7506)." California Government Code 65080(b)(vii)



### LDX GETS HERE BY BEING:

- ✓ Rooted in local planning
- ✓ Steered by a regional vision
- ✓ Aligned with state and federal policy



Sample of TAZs in the SCAG region

Connect SoCal 2020 Forecasted Regional Development Pattern

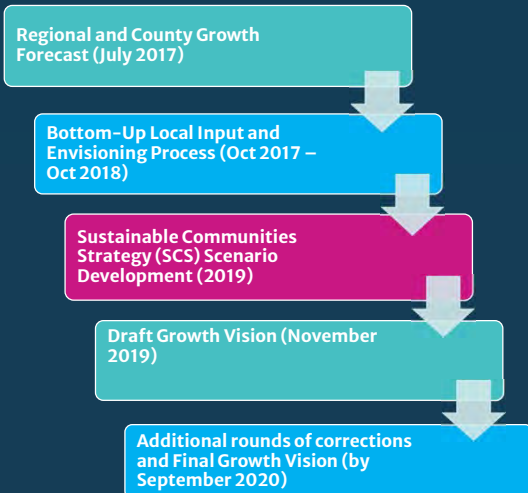
6



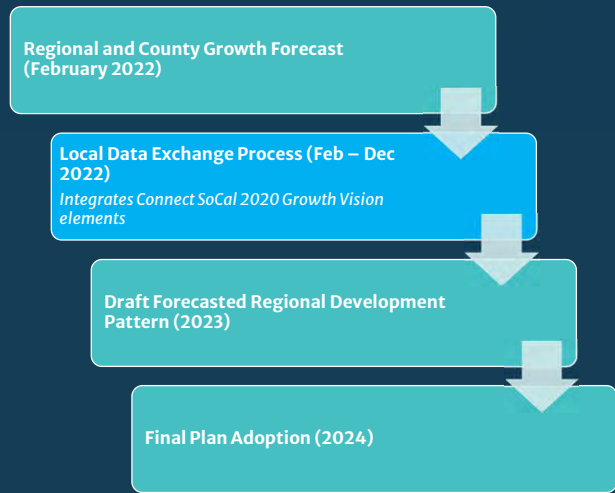
# Simplified Process for Connect SoCal 2024



## Connect SoCal 2020

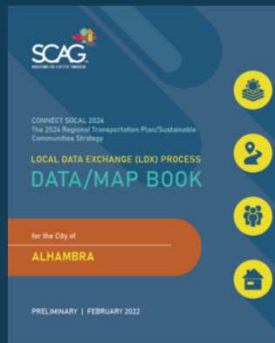


## Connect SoCal 2024



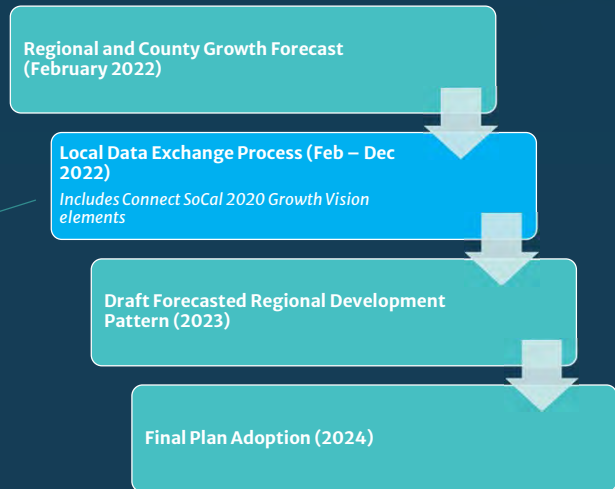
7

# Simplified Process for Connect SoCal 2024



Connect SoCal (2020) policies integrated directly and earlier. More transparent, more review/refinement opportunity. Grateful for local participation to help avoid costly delays! ©

## Connect SoCal 2024



8

# SCAG Data/Map Book and RDP LDX Web Contents



CATEGORY	LAYER NAME	REVIEW TYPE	CATEGORY	LAYER NAME	REVIEW TYPE
Land Use	General Plan	Update/Corrections	Green Region Resource Areas (SB 375)	Resilience (Flood areas, coastal inundation, wildfire risk)	Reference Only
	Zoning	Update/Corrections		Open Space/Habitat (Open space and parks, endangered species and plants, sensitive habitat areas, natural community and habitat conservation plans)	Reference Only
	Existing Land Use	Update/Corrections		Administrative/Working Lands (Tribal nations, military installations, farmlands)	Reference Only
	Specific Plan Land Use	Update/Corrections		City Boundary and Sphere of Influence	Reference Only
	Key Entitlements	Update/Corrections		Census Tract TAZ (Tier2)	Reference Only
Priority Development	Neighborhood Mobility Areas	Optional	Geographical Boundaries	Jurisdiction-level projections of households and employment (2019, 2035, 2050)	Update/Corrections
	Livable Corridors	Optional		Tier 2 TAZ-level projections of households and employment (2019, 2035, 2050)	Update/Corrections
	Job Centers	Optional			
	Housing Trajectory	Update/Corrections and site inventory upload			
Transportation	High Quality Transit Areas	Reference Only			
	Transit Priority Areas	Reference Only			
	Regional Bikeways	Optional			
	Regional Truck Routes	Optional			

*Digital versions of these data layers will be available to local jurisdictions through their RDP LDX login.*

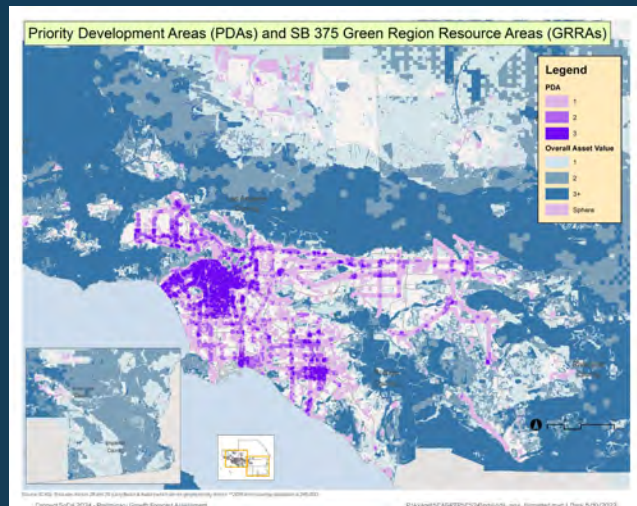
# Preliminary small area household forecast methodology



1. Estimate remaining general plan capacity and control to county/regional projection
2. Add RHNA/housing element rezone sites if needed
3. Growth prioritization steps
  - Increase in Priority Development Areas (PDAs)
  - Minimize in Green Region Resource Areas (GRRAs)

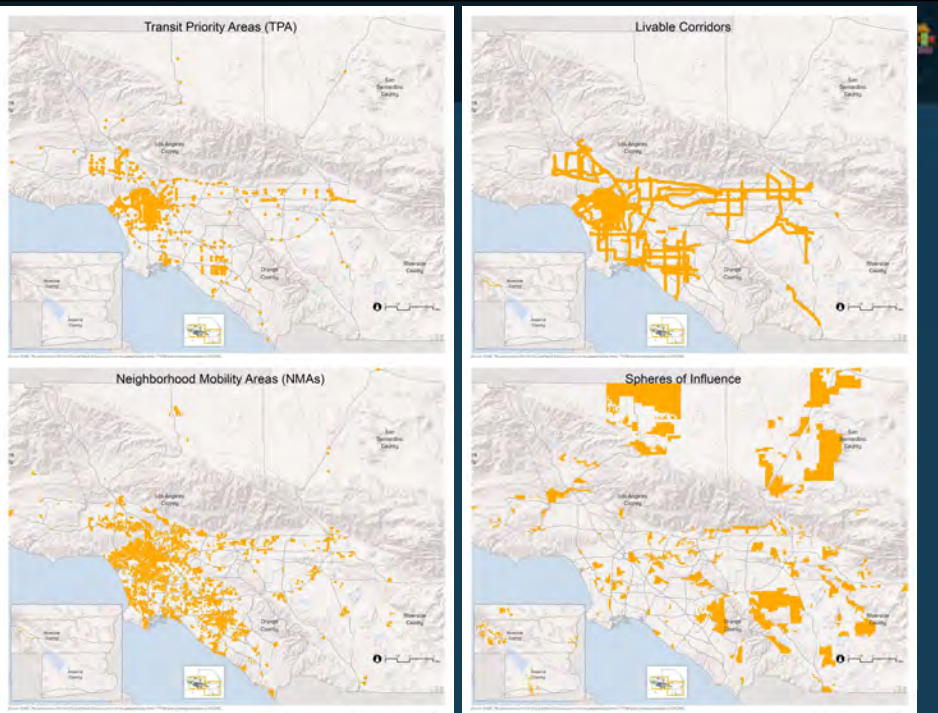
Number of Priority Development Areas	4	3	2	1	0	4	3	2	1	0	4	3	2	1	0	4	3	2	1	0
Number of Green Region Resource Areas	0	0	0	0	0	1	1	1	1	2	2	2	2	2	2	3+	3+	3+	3+	3+
Step #	1	2	3	4	5	6	7	8	9	10	11	12	13	14	15	16	17	18	19	20

Connect SoCal 2020's preliminary forecast only used Step 1.



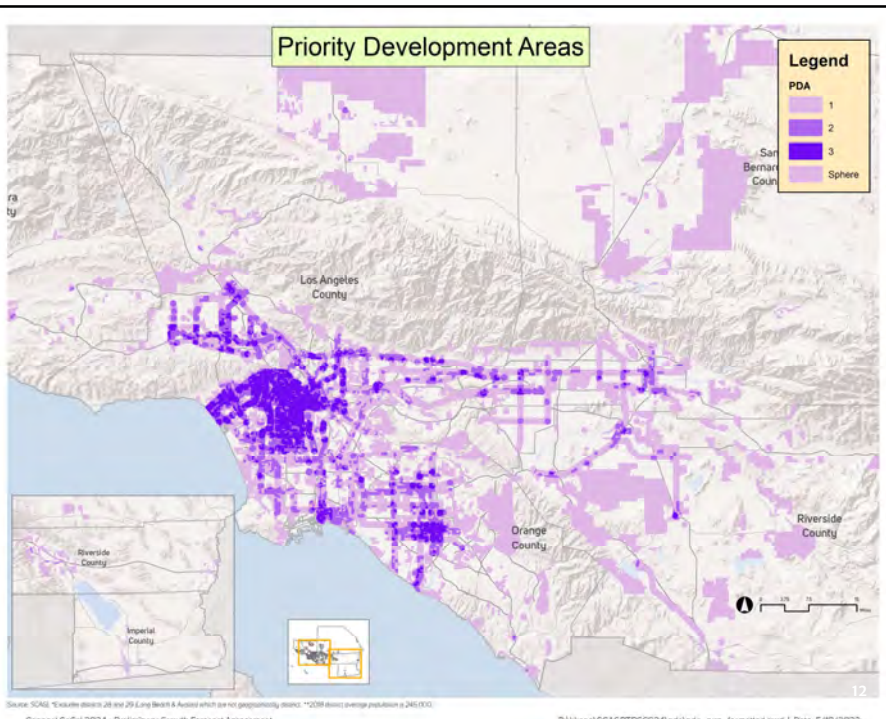
## Priority Development Areas

- Identify how many of the four a parcel lies in
  - Neighborhood Mobility Areas (NMA)
  - Livable Corridors
  - Transit Priority Areas (TPA)
  - Sphere of Influence



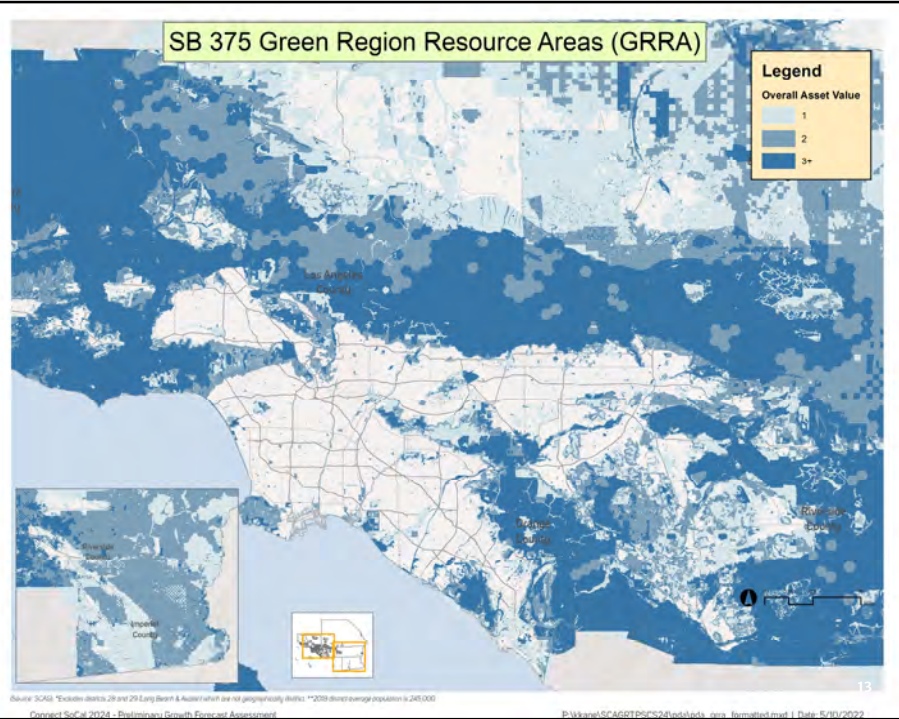
## Priority Development Areas

- Identify how many of the four a parcel lies in
  - Neighborhood Mobility Areas (NMA)
  - Livable Corridors
  - Transit Priority Areas (TPA)
  - Sphere of Influence



## SB 375 Green Region/ Resource Areas

- Identify how many of these ten a parcel lies in:
  - Flood areas
  - Sea level rise
  - Wildfire risk
  - Open space and parks
  - Endangered species and plants
  - Sensitive habitat areas
  - Natural community/habitat conservation plans
  - Tribal nations
  - Military installations
  - Farmlands



## SB 375 Green Region Resource Areas – 2024 Plan Refresh



### Connect SoCal 2020 Growth Vision

### Connect SoCal 2024 Local Data Exchange

Tribal Nation Lands	Tribal Nation Lands
Military Lands	Military Lands
Open Space and Conserved Lands	Open Space and Conserved Lands
Sea Level Rise Areas (2 ft)	Sea Level Rise Areas ( <b>3 ft</b> )
Farmlands in Unincorporated Areas	Farmlands in Unincorporated Areas
Wildland-Urban Interface (WUI)	Wildland-Urban Interface (WUI)
Grazing Lands and Farmlands within Incorporated Jurisdictions	Grazing Lands and Farmlands within Incorporated Jurisdictions
500 Year Flood Plains	<b>100</b> Year Flood Plains
CAL FIRE Very High Severity Fire Risk (state and local)	CAL FIRE Very High Severity Fire Risk (state and local)
Natural Lands and Habitat Corridors	Natural Lands and Habitat Corridors
Wetlands	Wetlands
Habitat Connectivity	Habitat Connectivity
Habitat Quality	Habitat Quality
	Habitat Conservation Plans
	Endangered Species and Plants

#### Key

Updated data - new source
Updated data - same source
No updated data - used Connect SoCal 2020 layer
New data category

Notes: **Bolded and underlined** text indicates additional updates. See Data/Map Books at <https://scag.ca.gov/local-data-exchange> for additional detail on Connect SoCal 2024 layers.

14

# Preliminary small area employment forecast methodology



- Estimate the base year employment
  - Apply EDD and Infogroup data for jurisdictional and TAZ level estimates
  - Control to the county level estimates
- Allocate county level growth to jurisdictions
  - Calculate the past share of city growth to the county
  - Apply the above share to the county level growth projections
- Disaggregate jurisdictional level growth to TAZ
  - Calculate the past share of TAZ level growth to the city
  - Apply the above share to the city level growth projections

**New data and county/regional totals, but same approach as Connect SoCal 2020.**

# Forecasted Regional Development Pattern relies on local review & approval to be complete



The collage illustrates the 'SCAG LDX Editor' tool and its associated documentation. It shows the user interface for selecting jurisdictions and datasets, displaying maps with color-coded land use zones. A separate image shows the cover of the 'LOCAL DATA EXCHANGE (LDX) PROCESS DATA/MAP BOOK' for the City of Alhambra, which is a preliminary document from February 2022. The cover page includes the SCAG logo and icons representing various data sources such as schools, parks, and housing.

# What local review is needed to improve the Forecasted Regional Development Pattern?



Please use this form to formally indicate that you have completed review of data for which SCAG is seeking update/corrections or optional review during the LDX process. For each layer reviewed, please indicate whether the review was provided through the Regional Data Platform (RDP) or via email to [ldx@scag.ca.gov](mailto:ldx@scag.ca.gov).

Should the recipe have used a fresher ingredient???

Category	Layer	Review Type	Review Provided Via:	Notes/Comments – Continue on back if needed
Land Use	General Plan	Update	<input type="checkbox"/> RDP <input type="checkbox"/> Email	
	Zoning	Update	<input type="checkbox"/> RDP <input type="checkbox"/> Email	
	Existing Land Use	Update		
	Specific Plan	Update		
Priority Development	Key Entitlements	Update		
	Neighborhood Mobility Areas	Optional		
	Livable corridors	Optional		
Transportation	Housing trajectory	Update		
	Regional bikeways	Optional		
	Regional truck routes	Optional		

Growth/SED	Year	Jurisdiction-level	TAZ-level	Sent by:	Notes/Comments – Continue on back
Total Households	2019	<input type="checkbox"/> Approve <input type="checkbox"/> Revise	<input type="checkbox"/> Approve <input type="checkbox"/> Revise	<input type="checkbox"/> RDP <input type="checkbox"/> Email	
	2035	<input type="checkbox"/> Approve <input type="checkbox"/> Revise	<input type="checkbox"/> Approve <input type="checkbox"/> Revise	<input type="checkbox"/> RDP <input type="checkbox"/> Email	
	2050	<input type="checkbox"/> Approve <input type="checkbox"/> Revise	<input type="checkbox"/> Approve <input type="checkbox"/> Revise	<input type="checkbox"/> RDP <input type="checkbox"/> Email	
Total Employment	2019	<input type="checkbox"/> Approve <input type="checkbox"/> Revise	<input type="checkbox"/> Approve <input type="checkbox"/> Revise	<input type="checkbox"/> RDP <input type="checkbox"/> Email	
	2035	<input type="checkbox"/> Approve <input type="checkbox"/> Revise	<input type="checkbox"/> Approve <input type="checkbox"/> Revise	<input type="checkbox"/> RDP <input type="checkbox"/> Email	
	2050	<input type="checkbox"/> Approve <input type="checkbox"/> Revise	<input type="checkbox"/> Approve <input type="checkbox"/> Revise	<input type="checkbox"/> RDP <input type="checkbox"/> Email	

If growth/SED were revised, please select a reason and describe:

Category	Reason	Description – Continue on back if needed
Correction	<input type="checkbox"/> General Plan capacity (current or expected future)	
Correction	<input type="checkbox"/> Entitlements	
Local Policy	<input type="checkbox"/> Zoning/plan changes resulting from the 6 <sup>th</sup> cycle housing element update	
Local Policy	<input type="checkbox"/> Growth will be focused in other priority development areas	
Local Policy	<input type="checkbox"/> Higher development potential in green region/resource areas	

- Please review for:
1. Corrections
  2. Local policy

See accompanying draft Data Review and Verification form.

# Proposed Review Process



STEP #	Number of PDAs	Number of GRRAs	HYPOTHETICAL percent of household growth:		
			Final 2020 Plan	Preliminary 2024 Plan	Locally-Reviewed 2024 Plan
1	4	0	10%	11%	?
2	3	0	9%	10%	?
3	2	0	8%	9%	?
4	1	0	7%	8%	?
5	0	0	6%	7%	?
6	4	1	8%	9%	?
7	3	1	7%	8%	?
8	2	1	6%	7%	?
9	1	1	5%	6%	?
10	0	1	4%	5%	?
11	4	2	6%	6%	?
12	3	2	5%	5%	?
13	2	2	4%	4%	?
14	1	2	3%	3%	?
15	0	2	2%	2%	?
16	4	3+	4%	0%	?
17	3	3+	3%	0%	?
18	2	3+	2%	0%	?
19	1	3+	1%	0%	?
20	0	3+	0%	0%	?

- LDX is a 1-on-1 discussion:
  - Local Information Services Team
  - Encourage considering “steps” when reviewing
  - Able to discuss major changes
- After input deadline, SCAG will review with TWG assistance:
  - Compare before-and-after
  - Spatial Scale: Region, County, ... Jurisdiction?
- Objective: hit targets with no further modification
  - All 197 jurisdictions working together! ☺

STEPS can be combined for easier reading:

	HYPOTHETICAL % of Household Growth
1 or more PDA	60%
2 or more PDAs	40%
0 GRRAs	70%
0-2 GRRAs	97%
0 GRRAs and 1 or more PDAs	50%

Hypothetical percentages are for discussion purposes only.

## Key points:



1. Where will the region grow? *Forecasted Regional Development Pattern*
2. LDX/preliminary forecast **allow jurisdictions** to review policy objectives
3. **“Starting point”** now takes into account:
  - Housing element update
  - Priority Development Areas
  - SB 375 Green Region / Resource Areas
4. LDX needed so cities can provide **corrections and local policy updates**
5. Objective: hit statutory targets **without needing** further modification

## Next Steps



- May 23<sup>rd</sup> – SCAG releases jurisdiction and TAZ-level forecast (Data/Map Book and RDP)
- Late May to October – One-on-one meetings
- July-Sept-Nov 2022 TWG meetings – Progress updates, review
- December 2<sup>nd</sup> – SCAG input deadline
- Early 2023 - SCAG assembles and packages “locally reviewed” development pattern

Thank You!

<https://scag.ca.gov/local-data-exchange>

<https://hub.scag.ca.gov>

[list@scag.ca.gov](mailto:list@scag.ca.gov)

Kevin Kane, PhD

Program Manager, Demographics and Growth Vision

[kane@scag.ca.gov](mailto:kane@scag.ca.gov)

[www.scag.ca.gov](http://www.scag.ca.gov)





# SCAG Connect SoCal 2024 Preliminary Growth Forecast Methodology

## Revised 5/16/2022

*This methodology describes SCAG’s step-by-step practice for developing the preliminary growth forecast of households and employment in 2019, 2035, and 2050 at the County and TAZ-levels<sup>1</sup>. The preliminary growth forecast reflects an expert and data-driven regional process, strives to put Connect SoCal on a path toward achieving its targets, and relies on local review to ground-truth and improve. It will be reviewed by local jurisdictions as part of the Connect SoCal 2024 Local Data Exchange (LDX) process beginning in May, 2022 with an input deadline of December 2, 2022.*

### **Steps:**

- 1) Follow county household and employment control totals established by Demographic Panel of Experts and Regional Forecast Process and [provided to the Regional Council in February 2022](#).
- 2) Following the guiding principles discussed at the Technical Working Group (TWG) beginning in January 2022, key policy inputs to be considered in the preliminary growth forecast include:
  - a. Seek to reflect potential capacity increases resulting from the 6<sup>th</sup> cycle Regional Housing Needs Allocation (RHNA) process
  - b. Increase growth in Priority Development Areas (PDAs, see [Data/Map Books](#) and Regional Data Platform for detail)
  - c. Minimize growth in Green Region Resource Areas (GRRAs, see [Data/Map Books](#) and Regional Data Platform for detail)
- 3) A logistic regression model will be used to fit jurisdiction-level household growth to county control totals. Key inputs include SCAG’s estimate of remaining general plan capacity, the 6<sup>th</sup> cycle RHNA allocation, and the Connect SoCal 2020 growth forecast. SCAG’s jurisdiction-level estimate of remaining general plan capacity is a starting point for forecast development and is based on the following parcel-level data attributes to the extent they are available:
  - a. General plan designation, using most current version available to SCAG as of late 2021
  - b. Mid-point estimate of general plan capacity
  - c. Use existing land use data and block-level Census 2020 data to subtract existing land uses, resulting in a measure of *remaining* general plan capacity.
- 4) Household Growth Prioritization Steps will be developed based on the following:
  - a. PDAs, which attribute values 0-4 based on the degree of transportation or locational benefit available in that place and include:
    - i. Neighborhood Mobility Areas (NMAs)
    - ii. Transit Priority Areas (TPAs)
    - iii. Livable Corridors
    - iv. Spheres of Influence (in unincorporated areas only)

---

<sup>1</sup> City-split Tier 2 TAZs in Imperial, Los Angeles, Orange, and Ventura counties. City-split Tier 3 TAZs in Riverside and San Bernardino Counties, which for these counties will be available beginning in Summer 2022 in collaboration with subregional councils of government.

- b. GRRAs, which attribute values 0-10 based on the degree of environmental sensitivity to natural hazards and climate change risks to development and include:
  - i. Areas subject to flooding
  - ii. Coastal inundation (sea level rise)
  - iii. Wildfire risk
  - iv. Open space and parks
  - v. Endangered species and plants
  - vi. Sensitive habitat areas
  - vii. Natural community and habitat conservation plans
  - viii. Tribal nations
  - ix. Military installations
  - x. Farmlands
- c. PDA and GRRAs are evaluated for each parcel in the region based on each possible GRRAs (0-9) and PDA (0-4) combination based on parcel centroid intersections
- d. Growth will be prioritized in **20 Steps**, reflecting combinations of PDA and GRRAs shown in Figure 1A.
- e. Available capacity will be assessed in each step using the remaining general plan capacity as described in (3), plus, if data is available, parcel-level capacity in excess of this amount from 6<sup>th</sup> cycle housing element site inventories.

A) PRIORITIZATION FOR CITY AND TAZ-LEVEL ALLOCATION:			B) CITY-LEVEL PRIORITIZATION STRATEGY:											
STEP #	Number of PDAs	Number of GRRAs	Imperial		Los Angeles		Orange		Riverside		S.Bernardino		Ventura	
			FROM	TO	FROM	TO	FROM	TO	FROM	TO	FROM	TO	FROM	TO
1	4	0												
2	3	0												
3	2	0												
4	1	0												
5	0	0												
6	4	1												
7	3	1												
8	2	1												
9	1	1												
10	0	1												
11	4	2												
12	3	2												
13	2	2												
14	1	2												
15	0	2												
16	4	3+												
17	3	3+												
18	2	3+												
19	1	3+												
20	0	3+												

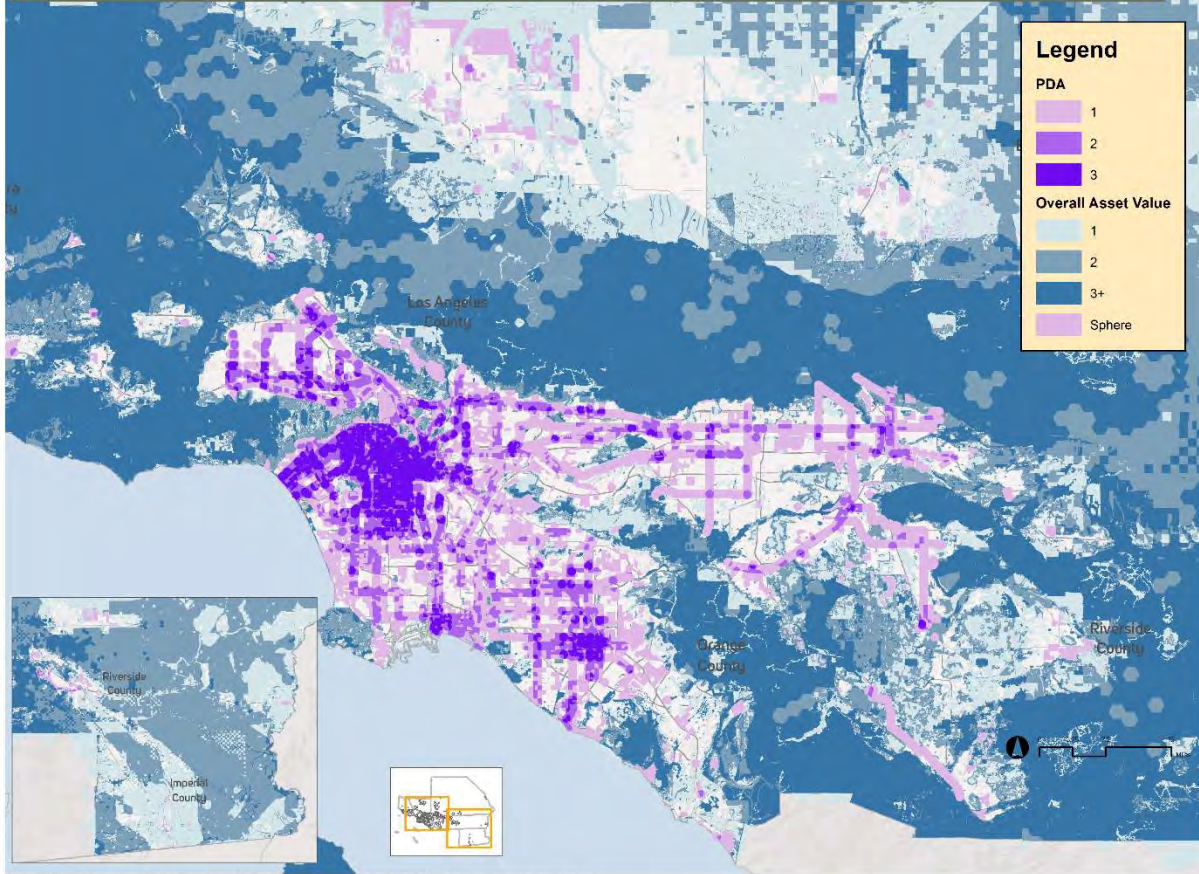
Green Higher priority parcel  
 Red Lower priority parcel

Arrows: Direction of growth prioritization relative to baseline model

Figure 1: Household Growth Prioritization Steps. While generally this process seeks to emphasize steps with higher priority an minimize steps with lower priority, capacity and county-level growth vary across the region necessitating slight differences in "from" and "to" steps to match county totals.

- 5) Jurisdictional household growth totals from the logistic regression model in (3) will be allocated based on the jurisdiction's available capacity **step-by-step**:
  - a. Jurisdictions whose modeled total exceeds available capacity in the lower ("FROM") steps indicated in Figure 1B will have their total household growth reduced to the amount that can fit into the indicated lower ("FROM") steps.
    - i. Example: *The model suggests household growth of 1,000 for a city in Imperial County. However, the available capacity in steps 1-10 is only 800. While steps 11-20 may have additional capacity, the city's projected growth will be 800.*
  - b. The county's total amount above the indicated step would be reallocated to other jurisdictions in the county, based on their available capacity in the lower ("TO") steps indicated in Figure 1B.
    - i. Example: *Across Imperial County, one jurisdiction's total was reduced per the above. The total amount of reduction was 200. Three jurisdictions have remaining capacity in steps 1-10. 200 households are allocated to these jurisdictions based on their share of the county's remaining capacity in steps 1-10.*
  
- 6) TAZ-level household allocation will be based on:
  - a. Jurisdiction's available capacity based on general plans and available 6<sup>th</sup> cycle RHNA housing element information, as described above.
  - b. Available/applicable information regarding entitled projects and development agreements.
  - c. Refer to specific plan land use designation, where applicable.
  - d. Apply growth in order of the steps in Figure 1A.
  
- 7) Employment growth will be based on:
  - a. An estimation of base year employment using California Employment Development Department (EDD) and Infogroup data and controlling to county totals
  - b. Allocating county-level growth to jurisdictions using each city's prior RTP/SCS share of the county's growth (shift-share using sectors at the 2-digit NAICS code level)
  - c. Disaggregating jurisdiction-level growth to TAZs by applying past shares of the city's growth to the new jurisdictional totals
  
- 8) Assessment of Input Received
  - a. During the Local Data Exchange process, SCAG will seek to meet one-on-one with all local jurisdictions to discuss plan data and preliminary growth forecast information.
    - i. SCAG will encourage the use of "Steps" 1-20 as a guide.
    - ii. SCAG's Local Information Services (LIST) team will be available for follow-up and discussion of major changes.
  - b. Jurisdictions will be provided with a Data Review and Verification Form to formally submit input and approval. The form will provide options to approve or revise data, and a request to describe any revisions made (e.g. corrections, local policy updates).
  - c. After all input is received and processed in early 2023, SCAG will compare preliminary and/or prior plan forecasts versus locally-reviewed growth forecasts, using "Steps" 1-20 and/or other sketch planning methods which may be available.
  - d. SCAG's objective is to achieve statutory targets without further modification of forecast data.

Priority Development Areas (PDAs) and SB 375 Green Region Resource Areas (GRRAs)



Source: SCAG. \*Excludes counties 20 and 21 (Imperial & San Bernardino) and net geographic boundary districts. \*\*2019 district average esocheters is 245,000.  
Connect SoCal 2024 - Preliminary Growth Forecast Assessment

P:\kkane\SCAGRTPSCS24\pda\pda\_grra\_formatted.mxd | Date: 5/10/2022

Figure 2: Illustration of PDAs and GRRAs in the SCAG region.

## Data Review and Verification Form – SCAG Connect SoCal 2024 – Local Data Exchange (LDX) Process

Date: \_\_\_\_\_ Jurisdiction: \_\_\_\_\_

Name: \_\_\_\_\_ Position/Title: \_\_\_\_\_

Email: \_\_\_\_\_ Phone: \_\_\_\_\_

Please use this form to formally indicate that you have reviewed of data for which SCAG is seeking update/corrections or optional review during the LDX process. For each layer reviewed, please indicate whether the review was provided through the Regional Data Platform (RDP) or via the Local Information Services Team (LIST) email to [list@scag.ca.gov](mailto:list@scag.ca.gov).

Category	Layer	Review Type	Sent by:	Notes/Comments – Continue on back if needed
Land Use	General Plan	Update	<input type="checkbox"/> RDP <input type="checkbox"/> Email	
	Zoning	Update	<input type="checkbox"/> RDP <input type="checkbox"/> Email	
	Existing Land Use	Update	<input type="checkbox"/> RDP <input type="checkbox"/> Email	
	Specific Plan	Update	<input type="checkbox"/> RDP <input type="checkbox"/> Email	
	Key Entitlements	Update	<input type="checkbox"/> RDP <input type="checkbox"/> Email	
Priority Development	Neighborhood Mobility Areas	Optional	<input type="checkbox"/> RDP <input type="checkbox"/> Email	
	Livable corridors	Optional	<input type="checkbox"/> RDP <input type="checkbox"/> Email	
	Housing trajectory	Update	<input type="checkbox"/> RDP <input type="checkbox"/> Email	
Transportation	Regional bikeways	Optional	<input type="checkbox"/> RDP <input type="checkbox"/> Email	
	Regional truck routes	Optional	<input type="checkbox"/> RDP <input type="checkbox"/> Email	

Please indicate whether you have completed a review of the preliminary growth forecast / socioeconomic data (SED). Please also indicate whether you made revisions at the jurisdiction or transportation analysis zone (TAZ) level, and the method of delivery. Note that changes will be integrated by SCAG and do not guarantee inclusion in the Final Connect SoCal 2024 due to state-mandated targets.

Growth/SED	Year	Jurisdiction-level	TAZ-level	Sent by:	Notes/Comments – Continue on back
Total Households	2019	<input type="checkbox"/> Approve <input type="checkbox"/> Revise	<input type="checkbox"/> Approve <input type="checkbox"/> Revise	<input type="checkbox"/> RDP <input type="checkbox"/> Email	
	2035	<input type="checkbox"/> Approve <input type="checkbox"/> Revise	<input type="checkbox"/> Approve <input type="checkbox"/> Revise	<input type="checkbox"/> RDP <input type="checkbox"/> Email	
	2050	<input type="checkbox"/> Approve <input type="checkbox"/> Revise	<input type="checkbox"/> Approve <input type="checkbox"/> Revise	<input type="checkbox"/> RDP <input type="checkbox"/> Email	
Total Employment	2019	<input type="checkbox"/> Approve <input type="checkbox"/> Revise	<input type="checkbox"/> Approve <input type="checkbox"/> Revise	<input type="checkbox"/> RDP <input type="checkbox"/> Email	
	2035	<input type="checkbox"/> Approve <input type="checkbox"/> Revise	<input type="checkbox"/> Approve <input type="checkbox"/> Revise	<input type="checkbox"/> RDP <input type="checkbox"/> Email	
	2050	<input type="checkbox"/> Approve <input type="checkbox"/> Revise	<input type="checkbox"/> Approve <input type="checkbox"/> Revise	<input type="checkbox"/> RDP <input type="checkbox"/> Email	

If growth/SED were revised, please select a reason and describe:

Category	Reason	Description – Continue on back if needed
Correction	<input type="checkbox"/> General Plan capacity (current or expected future)	
Correction	<input type="checkbox"/> Entitlements	
Local Policy	<input type="checkbox"/> Zoning/plan changes resulting from the 6 <sup>th</sup> cycle housing element update	
Local Policy	<input type="checkbox"/> Growth will be focused in other priority development areas	
Local Policy	<input type="checkbox"/> Higher development potential in green region/resource areas	

Check if you have also submitted the LDX Survey via [ [SURVEY MONKEY LINK](#) ]

Name: \_\_\_\_\_ Title: \_\_\_\_\_ Signature: \_\_\_\_\_

Signature should be from city manager or planning director to be considered complete. Please email to [list@scag.ca.gov](mailto:list@scag.ca.gov).

**SCAG Local Data Exchange (LDX) DRAFT Survey (4/28/22)**

**Background**

The Southern California Association of Governments (SCAG) is currently seeking input from local jurisdictions across our six-county region to develop Connect SoCal 2024, SCAG’s Regional Transportation Plan/Sustainable Communities Strategy (RTP/SCS). Connect SoCal 2024 will provide a long-range vision for Southern California, that integrates land use and transportation for increased mobility and more sustainable growth. It will incorporate important updates of fundamental data, enhanced strategies and investments intended to strengthen the current plan adopted in 2020, and help the region achieve state greenhouse gas emission reduction goals.

SCAG wants to better understand the trends, existing conditions and planning in the region. Your feedback from the local perspective is essential to help us develop Connect SoCal 2024. We are also trying to get a better understanding about the implementation of our prior regional plans. Please respond to each survey question as it pertains to your jurisdiction. Due to the multidisciplinary nature of the questions, we encourage interdepartmental collaboration. The survey is organized into five parts including: Land Use & Housing, Transportation, Environmental, Public Health and Equity, and Data. Responses are due by December 2, 2022. A web version of the survey is available at: **[Insert SurveyMonkey Link]**

**Part I – Land Use & Housing**

**General Plan**

1. Please enter the year of your jurisdiction’s most recent general plan element update. Add information for any additional elements contained in the General Plan but not listed:

<b><i>Element</i></b>	<b>Year</b>	<b>Web link</b>	<b>Comments</b>
<b>Land Use</b>			
<b>Circulation</b>			
<b>Housing</b>			
<b>Conservation</b>			
<b>Open space</b>			
<b>Noise</b>			
<b>Safety</b>			
<b>Environmental Justice</b>			
<b>[Additional Element]</b>			
<b>[Additional Element]</b>			

What are barriers and/or opportunities to updating these elements as part of the General Plan?

2. Is your jurisdiction currently in the process of updating its General Plan? Yes  No  If yes, when do you expect to complete the update? Date: [Publish Date]

What are barriers and/or opportunities to updating the General Plan?

3. When was the zoning code last updated to reflect your most recent amendments? Date: [Publish Date] Web link: [link]

What are barriers and/or opportunities to updating the Zoning Code?

4. Is your jurisdiction currently in the process of updating its land use designation and zoning code? Yes  No  If yes, when do you expect to complete the update? Date: [Publish Date] Does your 6th cycle housing element update include a rezone plan? (Yes/No)

5. Does the most recently adopted general plan update support any of the following [Sustainable Communities Strategies \(SCS\)](#) (See pages 25-32)?

**Strategies**

- Focus Growth Near Destinations and Mobility Options**
- Promote Diverse Housing Choices**
- Leverage Technology Innovations**
- Support Implementation of Sustainability Policies**
- Promote Green region**
- Center Focused Placemaking**
- Priority Growth Areas**
- Job Centers**
- Transit Priority Areas**
- High Quality Transit Areas**
- Neighborhood Mobility Areas**
- Livable Corridors**
- Transfer of Development Rights**
- Urban Greening**
- Regional Advance Mitigation**
- Transit oriented development (TOD)**
- Infill**
- Other**

N/A	Does Not Support	Supports	Supports and Includes Strategies
○	○	○	○
○	○	○	○
○	○	○	○
○	○	○	○
○	○	○	○
○	○	○	○
○	○	○	○
○	○	○	○
○	○	○	○
○	○	○	○
○	○	○	○
○	○	○	○
○	○	○	○
○	○	○	○
○	○	○	○
○	○	○	○
○	○	○	○

What are barriers and/or opportunities to implementing or supporting these strategies?

6. Does the circulation element of your General Plan have a policy regarding complete streets and if so, what is its scope and applicability?

[Other Comments]

7. Does your jurisdiction offer any of the following incentives for infill development or transit-oriented development?

	Infill		TODs		Web link
	Yes	No	Yes	No	
<b><i>Incentives</i></b>					
<b>Fast track permitting</b>	<input type="checkbox"/>	<input type="checkbox"/>	<input type="checkbox"/>	<input type="checkbox"/>	
<b>Fee Waivers</b>	<input type="checkbox"/>	<input type="checkbox"/>	<input type="checkbox"/>	<input type="checkbox"/>	
<b>Density bonus</b>	<input type="checkbox"/>	<input type="checkbox"/>	<input type="checkbox"/>	<input type="checkbox"/>	
<b>Increased floor area ratio</b>	<input type="checkbox"/>	<input type="checkbox"/>	<input type="checkbox"/>	<input type="checkbox"/>	
<b>Building height waivers</b>	<input type="checkbox"/>	<input type="checkbox"/>	<input type="checkbox"/>	<input type="checkbox"/>	
<b>Tax subsidies or other benefits</b>	<input type="checkbox"/>	<input type="checkbox"/>	<input type="checkbox"/>	<input type="checkbox"/>	
<b>Waived or reduced minimum parking requirement</b>	<input type="checkbox"/>	<input type="checkbox"/>	<input type="checkbox"/>	<input type="checkbox"/>	
<b>Reduced open space requirements</b>	<input type="checkbox"/>	<input type="checkbox"/>	<input type="checkbox"/>	<input type="checkbox"/>	
<b>Transfer of development rights</b>	<input type="checkbox"/>	<input type="checkbox"/>	<input type="checkbox"/>	<input type="checkbox"/>	
<b>Affordable Housing Set Aside</b>	<input type="checkbox"/>	<input type="checkbox"/>	<input type="checkbox"/>	<input type="checkbox"/>	
<b>Tax Increment Financing Districts</b>	<input type="checkbox"/>	<input type="checkbox"/>	<input type="checkbox"/>	<input type="checkbox"/>	
<b>Super Density Bonus</b>	<input type="checkbox"/>	<input type="checkbox"/>	<input type="checkbox"/>	<input type="checkbox"/>	
<b>By Right Approval</b>	<input type="checkbox"/>	<input type="checkbox"/>	<input type="checkbox"/>	<input type="checkbox"/>	
<b>Rezoning</b>	<input type="checkbox"/>	<input type="checkbox"/>	<input type="checkbox"/>	<input type="checkbox"/>	
<b>Affordable Housing Catalyst Fund, Trust fund, or revolving loan fund</b>	<input type="checkbox"/>	<input type="checkbox"/>	<input type="checkbox"/>	<input type="checkbox"/>	
<b>Other</b>	<input type="checkbox"/>	<input type="checkbox"/>	<input type="checkbox"/>	<input type="checkbox"/>	

Are there any barriers or opportunities for offering the incentives above?

8. Which of the following parking strategies are included in any of your existing specific plans, general plans, or zoning code?



**Parking strategies**

- Right-sized parking
- Park-once districts
- Shared parking
- Unbundled parking
- Parking maximums in designated areas
- Innovative parking design (i.e., Sustainable features)
- Waived or reduced minimum parking requirement
- Bicycle Parking
- Parking Pricing
- Other

Yes	No	Web link
<input type="checkbox"/>	<input type="checkbox"/>	
<input type="checkbox"/>	<input type="checkbox"/>	
<input type="checkbox"/>	<input type="checkbox"/>	
<input type="checkbox"/>	<input type="checkbox"/>	
<input type="checkbox"/>	<input type="checkbox"/>	
<input type="checkbox"/>	<input type="checkbox"/>	
<input type="checkbox"/>	<input type="checkbox"/>	
<input type="checkbox"/>	<input type="checkbox"/>	
<input type="checkbox"/>	<input type="checkbox"/>	

What are barriers and/or opportunities to include parking strategies as part of the plans?

---

Any additional parking strategies not mentioned above?

9. Does your jurisdiction have a development/impact/linkage fee ordinance? Yes  No  Date: [Publish Date] Web link: [link]  
 If yes, which of the following does it fund?

**Areas that receive funding**

- Traffic and/or VMT Reduction
- Parks
- Affordable housing
- Natural lands/Open space preservation
- Transit improvements/amenities
- Active Transportation
- Local Streets and roads
- Other

Yes	No	Web link
<input type="checkbox"/>	<input type="checkbox"/>	
<input type="checkbox"/>	<input type="checkbox"/>	
<input type="checkbox"/>	<input type="checkbox"/>	
<input type="checkbox"/>	<input type="checkbox"/>	
<input type="checkbox"/>	<input type="checkbox"/>	
<input type="checkbox"/>	<input type="checkbox"/>	
<input type="checkbox"/>	<input type="checkbox"/>	
<input type="checkbox"/>	<input type="checkbox"/>	

What are barriers and/or opportunities to include these types of fees in your plans and/or ordinances?

**Housing**

10. Does your jurisdiction utilize or are you considering any of the following zoning or land use strategies for housing (e.g., in your 6<sup>th</sup> Cycle Housing Element)?

**Strategies**

**Inclusionary zoning ordinance**

- Is there an in-lieu fee component?
- Rental Program
- Owner Program

**Rent stabilization ordinance**

- Maximum annual percentage rent increase allowed

**Affordable housing preservation ordinance**

**Mortgage down payment assistance program**

**Special financing district (CRIA, EIFD, Others?)**

**Incentives for affordable housing**

- Fast track permitting
- Fee waivers
- Density bonus
- Increased floor area ratio
- Building height waivers
- Tax subsidies or other benefits
- Waived or reduced minimum parking requirements
- Reduced open space requirements
- Other relaxed requirements for affordable housing

**Low-income housing tax credit (LITHC)**

**Housing Trust Fund**

**Other**

Yes	No	Web link
<input type="checkbox"/>	<input type="checkbox"/>	
<input type="checkbox"/>	<input type="checkbox"/>	
<input type="checkbox"/>	<input type="checkbox"/>	
<input type="checkbox"/>	<input type="checkbox"/>	
<input type="checkbox"/>	<input type="checkbox"/>	
[Comments]		
<input type="checkbox"/>	<input type="checkbox"/>	
<input type="checkbox"/>	<input type="checkbox"/>	
<input type="checkbox"/>	<input type="checkbox"/>	
<input type="checkbox"/>	<input type="checkbox"/>	
<input type="checkbox"/>	<input type="checkbox"/>	
<input type="checkbox"/>	<input type="checkbox"/>	
<input type="checkbox"/>	<input type="checkbox"/>	
<input type="checkbox"/>	<input type="checkbox"/>	
<input type="checkbox"/>	<input type="checkbox"/>	
<input type="checkbox"/>	<input type="checkbox"/>	
<input type="checkbox"/>	<input type="checkbox"/>	
<input type="checkbox"/>	<input type="checkbox"/>	
<input type="checkbox"/>	<input type="checkbox"/>	

Are there other strategies not identified above your jurisdiction is considering?
What are barriers and/or opportunities to include these strategies in your housing element?

11. What are the most critical barriers to your city/county in realizing the housing production goals in your RHNA and housing element?

[Other Comments]
------------------

12. What are some housing policies or broader strategic actions that would most help you achieve your RHNA housing production goals?

[Other Comments]
------------------

13. How does your city or county balance the need to deliver more housing with the need to consider growth in areas of environmental resources, high habitat values, and areas at risk of climate change impacts (high fire severity zones, sea level rise, sensitive habitat areas, farmland, etc., **SEE GREEN REGION RESOURCE AREAS IN DATA/MAP BOOK**)?

[Other Comments]

14. Connect SoCal seeks to advance land use strategies that focus on **housing affordability, production and preservation**. Please indicate and briefly describe whether your jurisdiction is implementing policies in the following areas, or if your jurisdiction has not adopted implementation policies if there are plans or interest in doing so. If there are barriers to doing so, please indicate what they are.

**Area of Focus**

- Permit streamlining for Accessory Dwelling Units (ADUs)?
- Permit streamlining and/or zoning for multi-family developments?
- Affordability of housing?
- Preservation of affordable housing?
- Other housing issues?

Comments

15. Connect SoCal seeks to advance land use strategies that focus on **infrastructure improvements and financing**. Please indicate and briefly describe whether your jurisdiction is implementing policies in the following areas, or if your jurisdiction has not adopted implementation policies if there are plans or interest in doing so. If there are barriers to doing so, please indicate what they are.

**Area of Focus**

- Tax-increment financing districts (e.g. Enhanced Infrastructure Finance Districts)?
- Infrastructure improvement plans for future development or redevelopment?
- Housing-supportive infrastructure (including broadband)?
- Other Infrastructure issues?

Comments

16. Connect SoCal seeks to advance land use strategies that focus on **infill development and redevelopment**. These strategies encourage development in walkable neighborhood centers, arterial corridors, transit rich areas, and job centers. Please indicate and briefly describe whether your jurisdiction is implementing policies in the following areas, or if your jurisdiction has not adopted implementation policies if there are plans or interest in doing so. If there are barriers to doing so, please indicate what they are.

**Area of Focus**

- Walkable mixed-use neighborhood centers?
- Transit-oriented development (TOD)?
- Job center creation/expansion?
- Arterial/Boulevard redevelopment?
- Other development issues?

Comments

17. Connect SoCal is a long-term regional plan that seeks to advance a **number of land use and transportation strategies that focus on a future several decades out**. These strategies encourage near-term actions that will lead to desirable future outcomes in communities throughout the region. Please indicate and briefly describe whether your jurisdiction is implementing policies that will result in positive future outcomes or if your jurisdiction has not adopted implementation policies if there are plans or interest in doing so. If there are barriers to doing so, please indicate what they are.

**Area of Focus**

- How will your community change over the next 20 years?
- What strategies is your community interested in to retain vibrant neighborhoods and business districts?
- What current trends are impacting your community's future?
- Other future issues?

Comments

PART II - Transportation

18. Has your jurisdiction adopted or plan to adopt any of the following:

**Adopted Policies, Plans and Strategies**

Yes	No	In Development	Year	Web link



Any other plans in the works for adoption?

19. Has your jurisdiction adopted or implemented any of the following Travel Demand Management (TDM) Strategies and to your knowledge, have any major employers or other entities implemented any such strategies?

	Jurisdiction		Major Employers	
	Yes	No	Yes	No
<b><u>Adopted TDM strategies</u></b>				
<b>Ridesharing incentives and rideshare matching</b>	<input type="checkbox"/>	<input type="checkbox"/>	<input type="checkbox"/>	<input type="checkbox"/>
<b>Vanpool programs</b>	<input type="checkbox"/>	<input type="checkbox"/>	<input type="checkbox"/>	<input type="checkbox"/>
<b>Transit pass benefits</b>	<input type="checkbox"/>	<input type="checkbox"/>	<input type="checkbox"/>	<input type="checkbox"/>
<b>Private employer shuttles or other transportation providers</b>	<input type="checkbox"/>	<input type="checkbox"/>	<input type="checkbox"/>	<input type="checkbox"/>
<b>Parking cash-out policies</b>	<input type="checkbox"/>	<input type="checkbox"/>	<input type="checkbox"/>	<input type="checkbox"/>
<b>Preferential parking or parking subsidies for carpoolers</b>	<input type="checkbox"/>	<input type="checkbox"/>	<input type="checkbox"/>	<input type="checkbox"/>
<b>Intelligent parking programs</b>	<input type="checkbox"/>	<input type="checkbox"/>	<input type="checkbox"/>	<input type="checkbox"/>
<b>Dynamic pricing for parking</b>	<input type="checkbox"/>	<input type="checkbox"/>	<input type="checkbox"/>	<input type="checkbox"/>
<b>Programs or mobility services aimed at local tourism travel (e.g. Shuttle bus)</b>	<input type="checkbox"/>	<input type="checkbox"/>	<input type="checkbox"/>	<input type="checkbox"/>
<b>Guaranteed ride home programs</b>	<input type="checkbox"/>	<input type="checkbox"/>	<input type="checkbox"/>	<input type="checkbox"/>
<b>Incentives for telecommuting or hybrid work</b>	<input type="checkbox"/>	<input type="checkbox"/>	<input type="checkbox"/>	<input type="checkbox"/>
<b>Designated pick-up/drop-off for ride sourcing or transportation network companies (TNCs, such as Lyft or Uber)</b>	<input type="checkbox"/>	<input type="checkbox"/>	<input type="checkbox"/>	<input type="checkbox"/>
<b>TNC partnership (providing first/last mile, dial-a-ride or paratransit, microtransit, etc.)</b>	<input type="checkbox"/>	<input type="checkbox"/>	<input type="checkbox"/>	<input type="checkbox"/>
<b>Bike share system</b>	<input type="checkbox"/>	<input type="checkbox"/>	<input type="checkbox"/>	<input type="checkbox"/>
<b>Facilities or incentives for low speed modes (Neighborhood Electric Vehicles)</b>	<input type="checkbox"/>	<input type="checkbox"/>	<input type="checkbox"/>	<input type="checkbox"/>
<b>Integrated mobility hubs</b>	<input type="checkbox"/>	<input type="checkbox"/>	<input type="checkbox"/>	<input type="checkbox"/>
<b>Transportation management areas</b>	<input type="checkbox"/>	<input type="checkbox"/>	<input type="checkbox"/>	<input type="checkbox"/>
<b>Parking Pricing</b>	<input type="checkbox"/>	<input type="checkbox"/>	<input type="checkbox"/>	<input type="checkbox"/>
<b>Micromobility program (bike share, scooter share, etc.)</b>	<input type="checkbox"/>	<input type="checkbox"/>	<input type="checkbox"/>	<input type="checkbox"/>
<b>Car share program</b>	<input type="checkbox"/>	<input type="checkbox"/>	<input type="checkbox"/>	<input type="checkbox"/>
<b>Employee training programs on multimodal travel options</b>	<input type="checkbox"/>	<input type="checkbox"/>	<input type="checkbox"/>	<input type="checkbox"/>

Any other TDM Strategies your jurisdiction is considering?

What are barriers and/or opportunities to include these strategies in your plans, programs, or ordinances?

20. Does your jurisdiction currently have a plan for mitigating vehicle miles travelled (VMT) related development impacts? Yes  No   
 If yes, please list applicable projects and/or measures taken (or proposed) to mitigate VMT impacts.

***Project or Measure***

Comments

[Title]  
 [Title]  
 [Title]  
 [Title]  
 [Title]

[Other Comments]

21. Does your jurisdiction receive local return funding (from a county transportation tax measure)?  
 Yes  No

If yes, please describe how your jurisdiction prioritizes spending of these funds.

[Other Comments]

22. Does your jurisdiction use local return and/or general fund revenue to support any of the following:

***Funding***

- Complete Streets**
- Bike Lanes**
- Pedestrian improvements**
- Repair (pavement, potholes)**
- Signal synchronization**
- Fixed route transit service**
- Dial-a-ride or other demand response service**
- Taxi scrip**
- Cool streets**
- Other**

Yes	No
<input type="checkbox"/>	<input type="checkbox"/>
<input type="checkbox"/>	<input type="checkbox"/>
<input type="checkbox"/>	<input type="checkbox"/>
<input type="checkbox"/>	<input type="checkbox"/>
<input type="checkbox"/>	<input type="checkbox"/>
<input type="checkbox"/>	<input type="checkbox"/>
<input type="checkbox"/>	<input type="checkbox"/>
<input type="checkbox"/>	<input type="checkbox"/>
<input type="checkbox"/>	<input type="checkbox"/>

[Other Comments]

23. Please indicate if your jurisdiction promotes the usage of Electrical Vehicles and/or Alternative Fuel Fleet stations or strategies:

**Stations/Fleet**

**Electric Vehicle Infrastructure**

**Electric Vehicle Incentives**

**Electrical Vehicle Station**

- **Heavy Duty Vehicles**
- **Passenger/Light Duty Vehicles**
- **How many in municipal fleet?**

**Alternative Fuel Fleet**

- **Heavy Duty Vehicles**
- **Passenger/Light Duty Vehicles**
- **How many in municipal fleet?**

**Other**

Yes	No	Comments
<input type="checkbox"/>	<input type="checkbox"/>	
<input type="checkbox"/>	<input type="checkbox"/>	
<input type="checkbox"/>	<input type="checkbox"/>	
<input type="checkbox"/>	<input type="checkbox"/>	
<input type="checkbox"/>	<input type="checkbox"/>	
<input type="checkbox"/>	<input type="checkbox"/>	

Any other Electric Vehicle Strategies your jurisdiction is considering?
What are barriers and/or opportunities to include electric vehicle strategies in your jurisdiction?

PART III - Environmental

**CEQA Streamlining**

24. Has your jurisdiction approved projects utilizing CEQA streamlining? (e.g. SB 743, SB 375, SB 35, or SB 226) Yes  No

If yes, please provide projects, streamlining vehicle, and approval year below.

**Project**

- [Title]
- [Title]
- [Title]
- [Title]
- [Title]

Streamlining Vehicle	Year	Web link

[Other Comments]
------------------

25. Does your jurisdiction utilize any of the following natural lands conservation strategies?



**Natural lands conservation strategies**

- Conservation easement
- Development impact fee
- Hillside/steep slope protection ordinance
- Transfer of development rights
- Mitigation bank
- Multiple species habitat conservation program (MSHCP)
- Tree planting or other urban heat mitigation
- Natural community conservation plan (NCCP)
- Other

Yes	No	Web link
<input type="checkbox"/>	<input type="checkbox"/>	
<input type="checkbox"/>	<input type="checkbox"/>	
<input type="checkbox"/>	<input type="checkbox"/>	
<input type="checkbox"/>	<input type="checkbox"/>	
<input type="checkbox"/>	<input type="checkbox"/>	
<input type="checkbox"/>	<input type="checkbox"/>	
<input type="checkbox"/>	<input type="checkbox"/>	
<input type="checkbox"/>	<input type="checkbox"/>	
<input type="checkbox"/>	<input type="checkbox"/>	

Any other natural lands conservation strategies not mentioned above?
What are barriers and/or opportunities to include these strategies in your plans, programs, or ordinances?

26. Does your jurisdiction have plans or policies in place to implement a “local version” of the State’s climate goal of reducing greenhouse gases by 40% below 1990 levels by 2030? Yes   
 No  Date: [Publish Date] Web link: [link]

[Other Comments]
------------------

27. Connect SoCal seeks to advance land use strategies that focus on **climate resiliency and conservation of natural and working lands**. Please indicate and briefly describe whether your jurisdiction is implementing policies in the following areas, or if your jurisdiction has not adopted implementation policies if there are plans or interest in doing so. If there are barriers to doing so, please indicate what they are.

**Area of Focus**

- Agricultural and/or natural land preservation?
- Development standards and/or limits on development in fire hazard areas?
- Resiliency plans and/or actions?
- Sea-level Rise plans and/or actions?
- Other climate resiliency issues?

Comments

PART IV – Public Health and Equity

28. Has your jurisdiction developed/adopted any of the following equity documents/efforts?

**Equity Documents/Efforts**

**Equity Resolution**

**Equity Definition**

**Equity Baseline Conditions Analysis**

**Equity Action Plan or Framework**

**Other**

Yes	No	Web link
<input type="checkbox"/>	<input type="checkbox"/>	
<input type="checkbox"/>	<input type="checkbox"/>	
<input type="checkbox"/>	<input type="checkbox"/>	
<input type="checkbox"/>	<input type="checkbox"/>	
<input type="checkbox"/>	<input type="checkbox"/>	

29. Pursuant to SB 1000, has your jurisdiction developed or adopted an Environmental Justice Element or incorporated EJ goals, policies, and objectives in the General Plan Update? Yes  No

Date: [Publish Date] Web link: [link]

30. Does your jurisdiction employ any unique outreach strategies to engage low-income residents, people of color and Tribal Governments during project development? Typical engagement strategies include community workshops, events, activities, advertisement through media outlets, and partnerships with local community groups. Yes  No  If "Yes" please describe in comments and/or provide links supporting documents. Web link: [link]

31. Has your jurisdiction incorporated any of the following planning practices?

**Planning practices**

**Health Element (in General Plan)**

**Health in all policies**

**Health equity**

**Analysis of the social determinants of health**

Yes	No	Web link
<input type="checkbox"/>	<input type="checkbox"/>	
<input type="checkbox"/>	<input type="checkbox"/>	
<input type="checkbox"/>	<input type="checkbox"/>	
<input type="checkbox"/>	<input type="checkbox"/>	

32. Does your jurisdiction have any of the following plans to address emergencies caused by natural disasters?

**Emergency and Natural Disaster Plans**

- Seismic safety plan
- Emergency evacuation plan
- Emergency response plan
- Hazard mitigation plan
- Fire protection plan
- SB 379 Compliant Safety Element
- Other

Yes	No	Year Adopted or Finalized	Web link
<input type="checkbox"/>	<input type="checkbox"/>		
<input type="checkbox"/>	<input type="checkbox"/>		
<input type="checkbox"/>	<input type="checkbox"/>		
<input type="checkbox"/>	<input type="checkbox"/>		
<input type="checkbox"/>	<input type="checkbox"/>		
<input type="checkbox"/>	<input type="checkbox"/>		
<input type="checkbox"/>	<input type="checkbox"/>		

What are barriers and/or opportunities to include these strategies in your plans, programs, or ordinances?

PART V - Data

33. SCAG is interested in data collected at the local level which would help support more robust community planning, provide resources to help solve many of our common challenges, and to align with Connect SoCal's objectives. Does your jurisdiction have or collect any of the following observed data:

**Observed Data**

- Bicycle or pedestrian volume data
- Sidewalk data
- Traffic counts
- Truck traffic counts
- Automated traffic counters
- Warehousing/distribution centers
- Number of manufacturing firms
- Local road pavement management and performance data
- Public health data
- Bike lane mileage data (bike lane, bike path, Class 3 bike routes, separated bike lanes (cycle tracks). Note please also include bike routes in your LDX submission.
- Collision data (e.g., police or fire department data, hospital data, etc.)
- Bridge condition data

Yes	No	Contact Name	Email
<input type="checkbox"/>	<input type="checkbox"/>		
<input type="checkbox"/>	<input type="checkbox"/>		
<input type="checkbox"/>	<input type="checkbox"/>		
<input type="checkbox"/>	<input type="checkbox"/>		
<input type="checkbox"/>	<input type="checkbox"/>		
<input type="checkbox"/>	<input type="checkbox"/>		
<input type="checkbox"/>	<input type="checkbox"/>		
<input type="checkbox"/>	<input type="checkbox"/>		
<input type="checkbox"/>	<input type="checkbox"/>		
<input type="checkbox"/>	<input type="checkbox"/>		
<input type="checkbox"/>	<input type="checkbox"/>		

**Pavement condition index (PCI) or International roughness index (IRI) data for local roads.**

**Open data portal**

**New Housing starts data**

**Allowed parking and restricted parking areas**

**Pavement Condition Index**

**Needs Assessment for System Preservation**

**Transit Ridership by Line/Route**

<input type="checkbox"/>	<input type="checkbox"/>		
<input type="checkbox"/>	<input type="checkbox"/>		
<input type="checkbox"/>	<input type="checkbox"/>		
<input type="checkbox"/>	<input type="checkbox"/>		
<input type="checkbox"/>	<input type="checkbox"/>		
<input type="checkbox"/>	<input type="checkbox"/>		
<input type="checkbox"/>	<input type="checkbox"/>		

[Other Comments]



## Connect SoCal 2024

Draft Vision, Goals, & Performance Measures

Technical Working Group

May 19, 2022

[www.scag.ca.gov](http://www.scag.ca.gov)



1

## Connect SoCal 2024: Overview



### Vision Statement:

- What do we want the region to become?
- Where do we want to go?

### (4) Simplified Goals:

- Mobility, Communities, Environment, & Economy
- Further defined through sub-goals

### Through Lines:

- Equity
- Resilience

2

### What kind of region do we want in 2050?

*A healthy, accessible, and connected region for a more resilient and equitable future.*



3

### *Build & maintain a robust transportation network.*

- Support investments and programs that are well-maintained and operated, coordinated, and resilient, and result in improved safety and air quality.
- Ensure reliable, accessible, affordable, and quality travel options while striving to enhance equity in transportation resources offered in underserved communities.
- Plan for people of all ages, abilities, and backgrounds.

4

## Connect SoCal 2024 Draft Goals: **Communities**



### *Develop, connect, & sustain communities that are livable & thriving.*

- Reinforce vibrant, human-centered communities in urban, suburban, and rural settings to increase mobility options and reduce travel distances.
- Produce and preserve a diversity of housing types to improve affordability, accessibility, and choices for all.
- Foster inclusive communities free from barriers that restrict access to opportunity, and actively seek to reduce racial and economic disparities.

5

## Connect SoCal 2024 Draft Goals: **Environment**



### *Create a healthy region for the people of today & tomorrow.*

- Develop communities that are resilient and can mitigate, adapt to, and respond to chronic and acute stressors and disruptions, such as climate change.
- Integrate the region's development pattern and transportation network to improve air quality and reduce greenhouse gas emissions.
- Conserve and restore the region's natural and agricultural resources.

6

## Connect SoCal 2024 Draft Goals: Economy



*Support a sustainable, efficient, and productive regional economic environment that provides opportunities for all.*

- Provide physical and digital infrastructure to improve access to education, vocational training, jobs, financial systems, and to foster the growth of small businesses in underserved communities.
- Advance a resilient and efficient goods movement system that supports the economic vitality of the region, attainment of clean air, and quality of life for our communities.
- Improve regional multimodal transportation system infrastructure and efficiency to enhance the region's global economic competitiveness.

7

## Connect SoCal 2024 Draft Goals: Overview



- 1. Mobility:** Build and maintain a robust transportation network
- 2. Communities:** Develop, connect, and sustain communities that are livable and thriving
- 3. Environment:** Create a healthy region for the people of today and tomorrow
- 4. Economy:** Support a sustainable, efficient, and productive regional economic environment that provides opportunities for all

8



# Connect SoCal 2024: Draft Performance Measures



- Evaluate the Plan's investments & strategies relative to regional goals
- Address state GHG reduction targets & federal conformity requirements
- Address federal performance reporting requirements, including Environmental Justice
- Support on-going monitoring of progress toward achieving regional goals & targets

9

# Indicators, Performance Measures, & Monitoring Measures



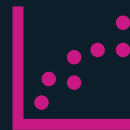
What's the difference?



Baseline Indicators  
Existing Conditions  
Today



Performance Measures  
Plan Evaluation  
2050



Monitoring Measures  
On-going Progress  
Tomorrow

10

# Connect SoCal 2024: Plan Performance Measures



## Mobility

- Trip distance
- Mode share
- Person hours of delay by facility type
- Person-delay per capita
- Truck delay by facility type
- Average travel time
- Travel time by mode
- Access to jobs
- Congestion bottlenecks
- Transit seat utilization

## Communities

- Share of trips less than 3 miles
- Share of regional households located in HQTAs or PDAs
- Physical activity and air pollution-related public health incidences & costs

## Environment

- VMT per capita
- GHG per capita
- Total square miles of greenfield & rural lands converted to urban use
- Criteria air pollutants
- Energy & water consumption per capita
- GHG sequestration

## Economy

- New jobs added due to transportation system investments & improved regional economic competitiveness
- Share of employment growth in HQTAs or PDAs
- Transportation system investment benefit/cost ratio

11

11

# Connect SoCal 2024: Plan Performance Measures



**EQUITY**

1. Will our region become more connected & accessible?
2. Will we grow in ways that encourage livability?
3. Will people & our natural environment become healthier?
4. Will our economy function effectively for everyone?

**RESILIENCE**

12

# Connect SoCal 2024: On-going Monitoring Measures



## Mobility

- Average travel time
- Commute mode share
- % reliable person-miles traveled on NHS
- Peak hour excessive delay
- NHS bridge, NHS road, & local roads condition
- Fatalities/serious injuries (incl. transit)
- Transit system reliability, equip. condition
- Transit boardings
- **Transit seat utilization**
- **Managed lanes utilization**

## Communities

- Housing cost burden
- Asthma incidence & exacerbation
- % of residents within 1/2 mile walk to open space
- **ADU development**
- **Residential development ratio**
- **Housing vulnerable to enviro impacts**

## Environment

- VMT per capita
- Air quality by basin
- Number of acres of parks for every 1,000 residents
- % of households near high-volume roadways
- **% of pop. In climate risk areas**

## Economy

- Percent of Interstate system mileage providing reliable truck travel time
- **Unemployment rate**
- **Employment**

13

13

# Connect SoCal 2024 Performance Measures: Engagement



## Feedback sought from:

- **Regional Planning Working Groups**
- **Technical Working Group**
- **Regional Transportation Technical Advisory Committee**

## Requested feedback on:

- **How to better integrate equity & resilience**

## Examples of feedback:

Expansion of the proposed new 'Managed Lane Utilization' metric to include both HOT & HOV lanes

Clarification on methodology to be used for proposed new 'Congestion Bottlenecks' measure

Expansion of proposed new 'ADU Potential' metric to include all areas (not just PDAs).

- Plan performance assessment should focus more on reducing travel time & increasing safety & comfort for transit & active transportation users rather than motor vehicle travel delay.

14

## Connect SoCal 2024 Performance Measures: Engagement



### Some examples of stakeholder feedback received included:

- Expansion of the proposed new 'Managed Lane Utilization' metric to include both HOT & HOV lanes.
- Clarification on methodology to be used for proposed new 'Congestion Bottlenecks' measure.
- Expansion of proposed new 'ADU Potential' metric to include all areas (not just PDAs).
- Plan performance assessment should focus more on reducing travel time & increasing safety & comfort for transit & active transportation users rather than motor vehicle travel delay.

15

## Timeline



- **July 2022:**
  - Share draft goals & performance measures with SCAG Policy Committees
- **Summer onwards:**
  - Continue to assess feasibility of revised/new measures
  - Seek feedback from broader base of stakeholders
  - Refine as necessary
  - Share updates with stakeholders



16

# Thank You!

## Questions/Feedback?

Vision/Goals | Sarah Dominguez, [dominguezs@scag.ca.gov](mailto:dominguezs@scag.ca.gov)  
Performance Measures | Courtney Aguirre, [aguirre@scag.ca.gov](mailto:aguirre@scag.ca.gov)  
Performance Measures | Michael Gainor, [gainor@scag.ca.gov](mailto:gainor@scag.ca.gov)  
[www.scag.ca.gov](http://www.scag.ca.gov)



# Connect SoCal 2024 Draft Goals and Vision: TWG Update

May 19, 2022

## Background

Staff shared out information with the Regional Planning Working Groups, Technical Working Group and Regional Transportation Technical Advisory Committee from January through April 2022.

Stakeholders were invited to share reactions and provide feedback. Prompts included:

- How can we better integrate equity and resilience?
- Is there anything missing?

SCAG received 36 unique comments during Spring of 2022. Feedback ranged from specific text edits, requests for expansion or clarity on certain terms. Where there were requests for further specificity on the “how” or actions to support the goal, SCAG staff concluded to leave as-is to allow for further policy development of the proposed strategies and actions until the adoption of the Final Plan in 2024.

After the deadline for feedback on April 30, 2022, staff worked to incorporate stakeholder comments and to ensure that the goals and sub-goals appropriately addressed Equity and Resilience.

## Draft Goals and Vision

**Vision: A healthy, accessible, and connected region for a more resilient and equitable future.**

### Goal: Mobility - Build and maintain a robust transportation network.

- Support investments and programs that are well-maintained and operated, coordinated, and resilient, and result in improved safety and air quality and minimize greenhouse gas emissions.
- Ensure reliable, accessible, affordable, and quality travel options while striving to enhance equity in transportation resources offered in underserved communities.
- Plan for people of all ages, abilities, and backgrounds.

### Goal: Communities - Develop, connect, and sustain communities that are livable and thriving.

- Reinforce vibrant, human-centered communities in urban, suburban, and rural settings to increase mobility options and reduce travel distances.
- Produce and preserve a diversity of housing types to improve affordability, accessibility, and choices for all households.
- Foster inclusive communities free from barriers that restrict access to opportunity, and actively seek to reduce racial and economic disparities.

### Goal: Environment - Create a healthy region for the people of today and tomorrow.

- Develop communities that are resilient and can mitigate, adapt to, and respond to chronic and acute stressors and disruptions, such as climate change.

- Integrate the region's development pattern and transportation network to improve air quality and reduce greenhouse gas emissions.
- Conserve and restore the region's natural and agricultural resources.

**Goal: Economy - Support a sustainable, efficient, and productive regional economic environment that provides opportunities for all ~~residents~~.**

- Provide physical and digital infrastructure to improve access to education, vocational training, jobs, financial systems, and foster the growth of small businesses in underserved communities.
- Advance a resilient and efficient goods movement system that supports the economic vitality of the region, attainment of clean air, and quality of life for our communities.
- Improve regional multimodal transportation system infrastructure and efficiency to enhance the region's global economic competitiveness.

# Regional Early Action Program (REAP) 2021 Overview and Draft Program Framework

Sarah Jepson, Director, Planning & Programs

May 19, 2022

[www.scag.ca.gov](http://www.scag.ca.gov)



## Agenda



- Overview of REAP 2021 program
- SCAG's draft REAP 2021 Program Framework
- REAP program development timeline/outreach plan



## Regional Early Action Planning Grant 2021 (REAP 2021)



### AB140 – FY21-22 state budget (May revise)

- ~ **\$600 million** statewide
- **\$30 million** = **rural competitive program** for eligible entities not within an MPO region
- **\$30 million** = **competitive program for all eligible entities** for projects that “demonstrably exceed the requirements...and further multiple policy objectives”
- ~ **\$500 million** from Federal American Recovery , **formula allocated to MPOs**
  - ~ **\$246 million** = **SCAG region’s formula share**
    - 10 % of funds available through Advance Application after January 1, 2022.
    - All funds obligated June of 2024 / **expended by June 2026**
    - Final closeout June 2026.

## REAP 2021 – MPO Formula Allocation Program



For “transformative planning and implementation activities”

Four required objectives (different from REAP 1.0):

- Coronavirus Economic Recovery AND
- Accelerating infill housing development AND
- Reduce Vehicle Miles Travelled AND
- Affirmatively Further Fair Housing

## SCAG's DRAFT Program Development Framework



### *Based On:*

#### State plans and directives

- AB140 Trailer Bill Language (July 2021)
- REAP 2.0 Draft Framework Paper (Nov 2021)
- **NEW!** REAP 2.0 Draft Program Guidelines (March 2022)

#### SCAG adopted plans

- Connect SoCal Implementation Strategy (2020)
- Executive Administration Committee Strategic Action Plan (2021)
- Racial Equity Early Action Plan (2021)
- Inclusive Economic Recovery Strategy (2021)
- SCAG 2021 Housing Production Study

## Draft Program Development Framework



### *Three Program Areas*

- Early Action Initiatives—Connect SoCal Implementation Strategy
- County Transportation Commission Partnership Program (NEW)
- Housing Supportive Infrastructure Program (NEW)

## DRAFT Program Areas (Pending Program Guidelines and Outreach)



### 1. Early Action Initiatives

- Enhance and Expand on Connect SoCal Implementation Strategy
- Ex: Sustainable Communities Program (SCP) Call for Projects
  - GHG/VMT reducing planning activities and demonstration projects

### 2. CTC Partnership Program

- Guidelines will be developed through outreach in 2022
- Align with Connect SoCal Key Connections – expanded mobility ecosystems and management strategies using innovative policies and/or technologies
  - Ex: solutions to improve transit travel time and reliability, micro-transit and other mobility-on-demand services, VMT mitigation bank and exchange programs, etc.
- Outreach with CTCs to gauge opportunities for partnership

## DRAFT Program Areas (Pending Program Guidelines and Outreach)



### 3. Housing Supportive Infrastructure Program

- Infrastructure and utilities to support housing development
  - sewer, water, wastewater, electric, broadband
  - Incorporate sustainability and climate resiliency strategies
- Housing Trust Funds
- Preservation of expiring covenants/NOAH
- Technical Assistance
  - More land use planning?
  - Surplus land development?
  - **(New!)** Renter assistance

## Draft Program Development Framework



- The Draft Program Framework is a DRAFT to start conversations.
- We are required by the State, and are fully committed to, a robust engagement process
- We are re-assessing based on recently released Draft Program Guidelines

## REAP 2021 Program Development Timelines



### Previous Steps

- Oct. 2021 Draft SCAG REAP 2021 Framework presented to Policy Committees
- Nov. 2021 REAP 2021 Framework Paper released by HCD
- Dec. 2021 SCAG Feedback Re: Framework Submitted
- Jan. 2022 Advance Application released (for outreach and program development)

### Current Status

- Advance Application to be submitted April 2022
- Outreach/budget/staffing plan development
- One on one meetings with COGs
- Draft program guidelines released March 2022

### Next Steps

- Outreach and Engagement begins – late April 2022
- Spring 2022 – Final Guidelines released
- After Guidelines release – continue outreach with progress updates to Policy Committees
- Late 2022 – Full application to be submitted to HCD

## REAP 2021 Program Development



### Early Application

Application to be submitted  
**May 2022**

Requires:  
Outreach & Engagement for  
Program Development

### Full Application

Application to be submitted in late  
**2022**

Proposed Programs:  
Existing Program Expansion  
Housing Supportive  
Infrastructure  
CTC Partnership Program

## REAP 2021 Outreach Plan - Overview



### PURPOSE

- Establish priorities for transformative planning and implementation activities
- Learn of existing efforts/identify needs and opportunities
- Incorporate feedback in final Program Application

### TARGET AUDIENCE

- General Public & Stakeholders
- Disadvantaged & Historically Underserved Communities
- Public Agencies and other partners

### TIMELINE

- 2022 = to support Program development and submittal of the full funding application
- 2023 - 2024 = through Program development and obligation of funds
- 2024 - 2026 = through Program implementation

### HOW

- Variety of outreach methods, including: workshops, listening sessions, focus groups, public opinion surveys, meetings, forums
- Program wide outreach & program area specific outreach
- Regular eblasts and updates

## Building on Past Outreach



Program	Type of Outreach	Outcomes
Connect So Cal	Public Participation Plan	Identifies stakeholders and the manner we engage with them
REAP	Partnerships	Identification of priority housing projects of our Subregions, jurisdictions, and community organizations
Housing Production Study	Interviews and convenings with core stakeholders	Recommendations for SCAG to prioritize its Housing Work program in the short, medium and longer term
Inclusive Economic Recovery Study	Focus groups, convenings, survey.	Recommendations for elevating inclusive, equitable, and robust economic development in the areas of: Housing Production and Preservation, Transportation and Infrastructure, Sector Based Strategies, and Human Capital.

## Program Wide Outreach



SCAG Policy Committee Engagement

COG Outreach

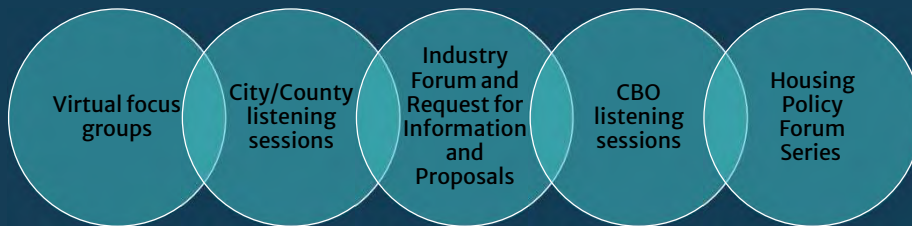
Public Agency Meetings

Public Opinion Survey

Tribal Engagement

Public Convenings

## Additional Housing Supportive Infrastructure Program Outreach



Thank You!

[www.scag.ca.gov](http://www.scag.ca.gov)

