



# Goods Movement and Logistics Opportunities for the Region

## A Public Sector View



**Mark Pisano**  
**Executive Director**

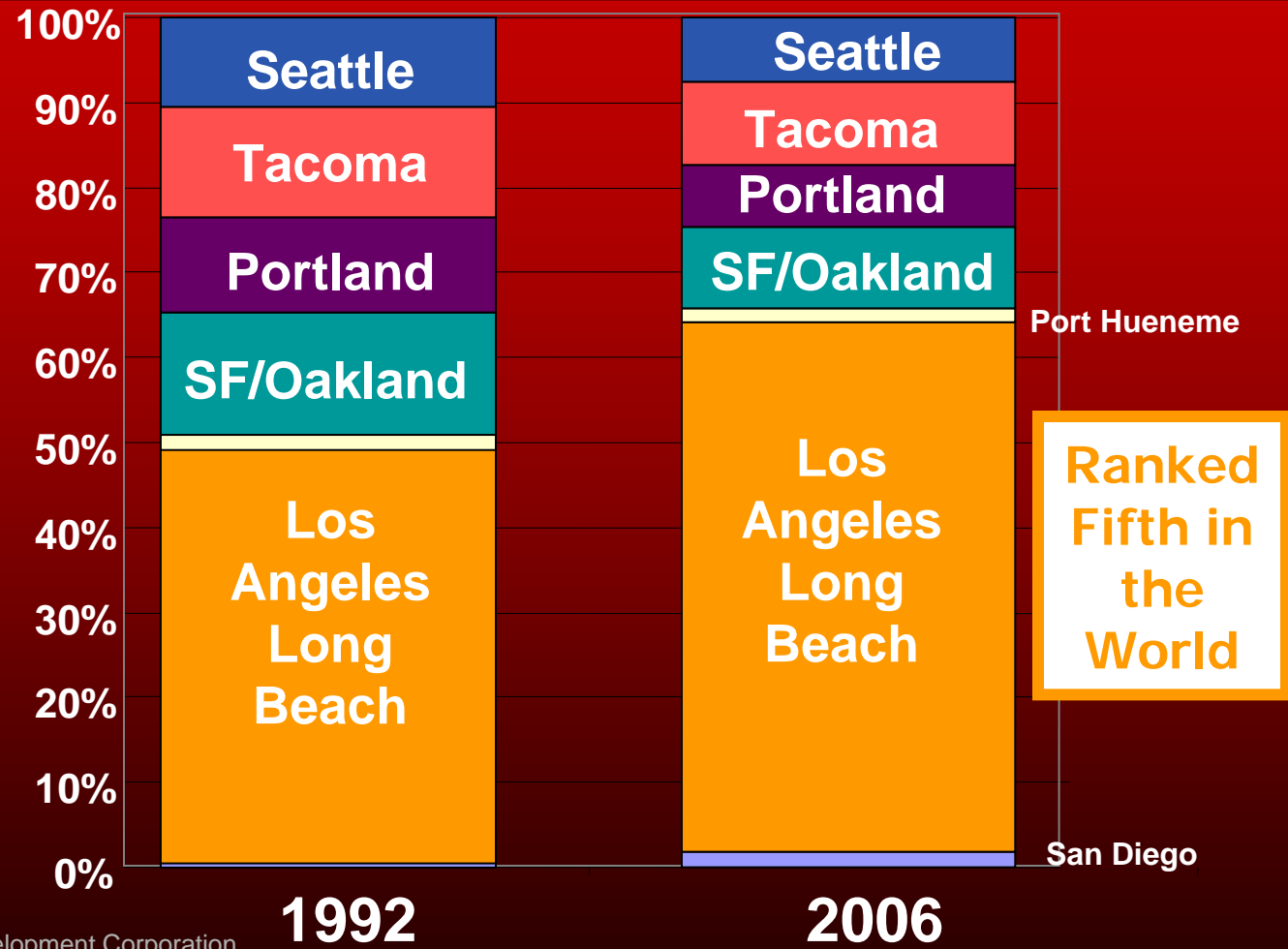
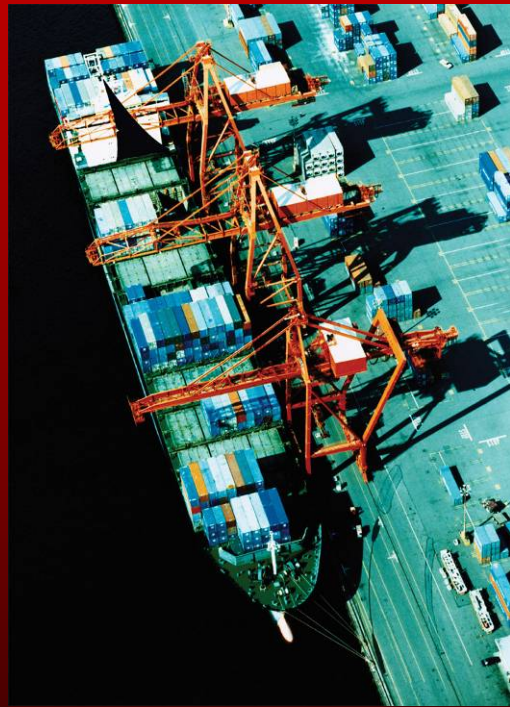
March 9, 2007



**Long Term Sector Strength**



# Cargo at Major West Coast Ports



**Tonnage Share**

Source: Los Angeles Economic Development Corporation

**Southern California Association of Governments**



# Volume at LA Ports Expected to Triple



**8,000 TEU ship is now  
standard**



**Five 14,000 TEU ships will  
be delivered in 2007**

**Southern California Association of Governments**



# Soaring Air Cargo Tonnage



**Volume at  
Region's  
Airports Expected  
to More Than  
Triple Over Next  
25 Years**

Source: SCAG Aviation Task Force Memorandum, 2003

2.6 million TONS to 8.4 million in 2030

**Southern California Association of Governments**



# Huge Demand for More Track Capacity



<u>Year</u>	<u>Freight Trains per Day</u>
2000	112
2010	165
2025	250
	123% Increase

Source: SCAG Los Angeles - Inland Empire Railroad Mainline Advanced Planning Study

**Southern California Association of Governments**



# Huge Demand for More Skilled Personnel

# Logistics

Southern California Association of Governments



# **Technologically Driven**

**Computerized Order Receiving**

**Personal Digital Assistants**

**Robotic Goods Handling**

**Random Product Testing & Measurement Equipment**

**Geographic Information Systems Truck Routing**

**Laser Scanners**

**Global Positioning Tracking of Containers**

**Internet Communications**

**Manufacturing Inside Warehouses**

**Southern California Association of Governments**

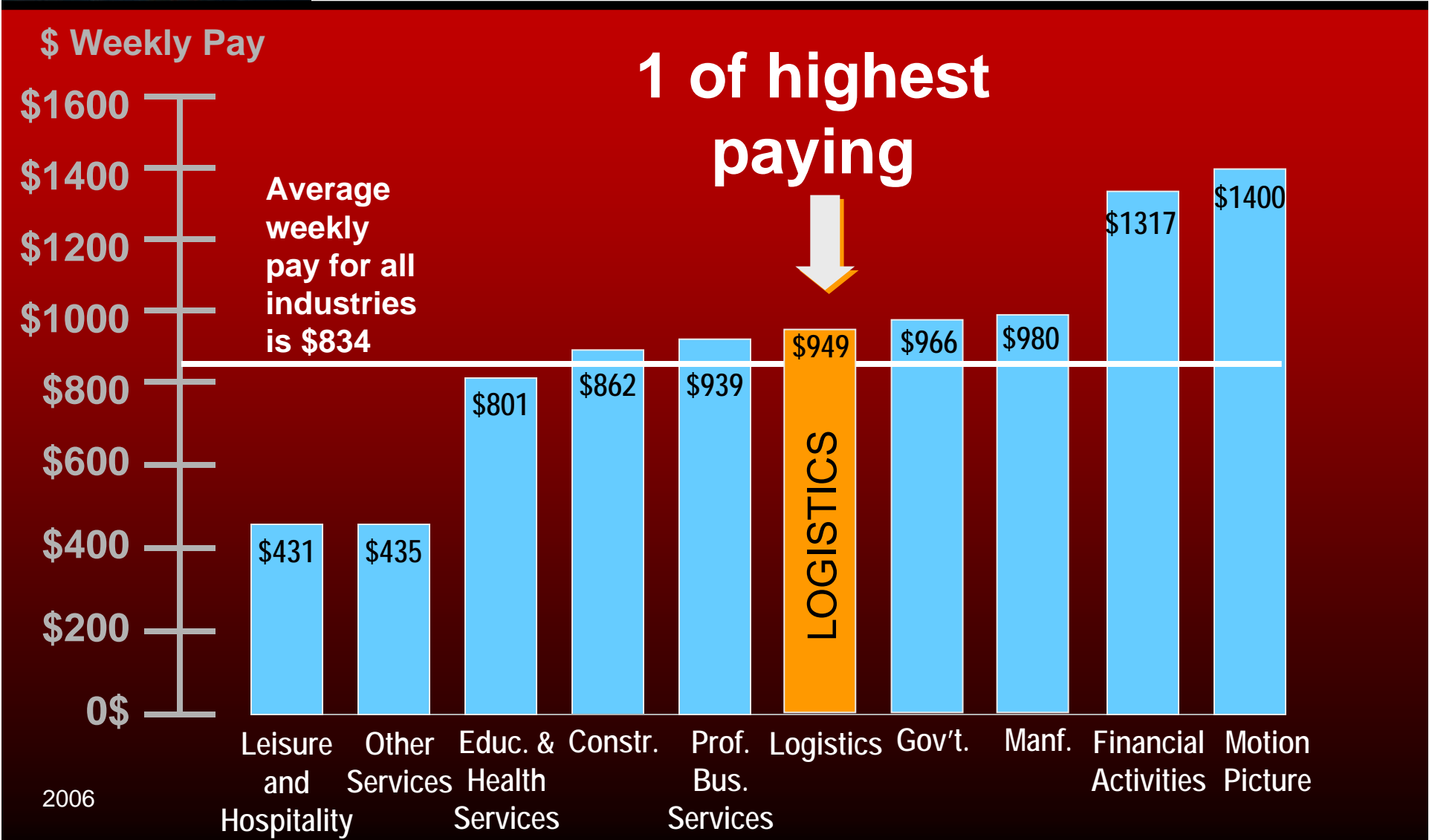


# Logistics Education

- **New Programs**
  - Global Logistics Specialist (GLS)
  - Master of Arts in Global Logistics (MAGL)
- **Math & Computer Skills Focus**
  - Math – calculate freight moving formulas
  - Computer Skills – complete complex shipping documents

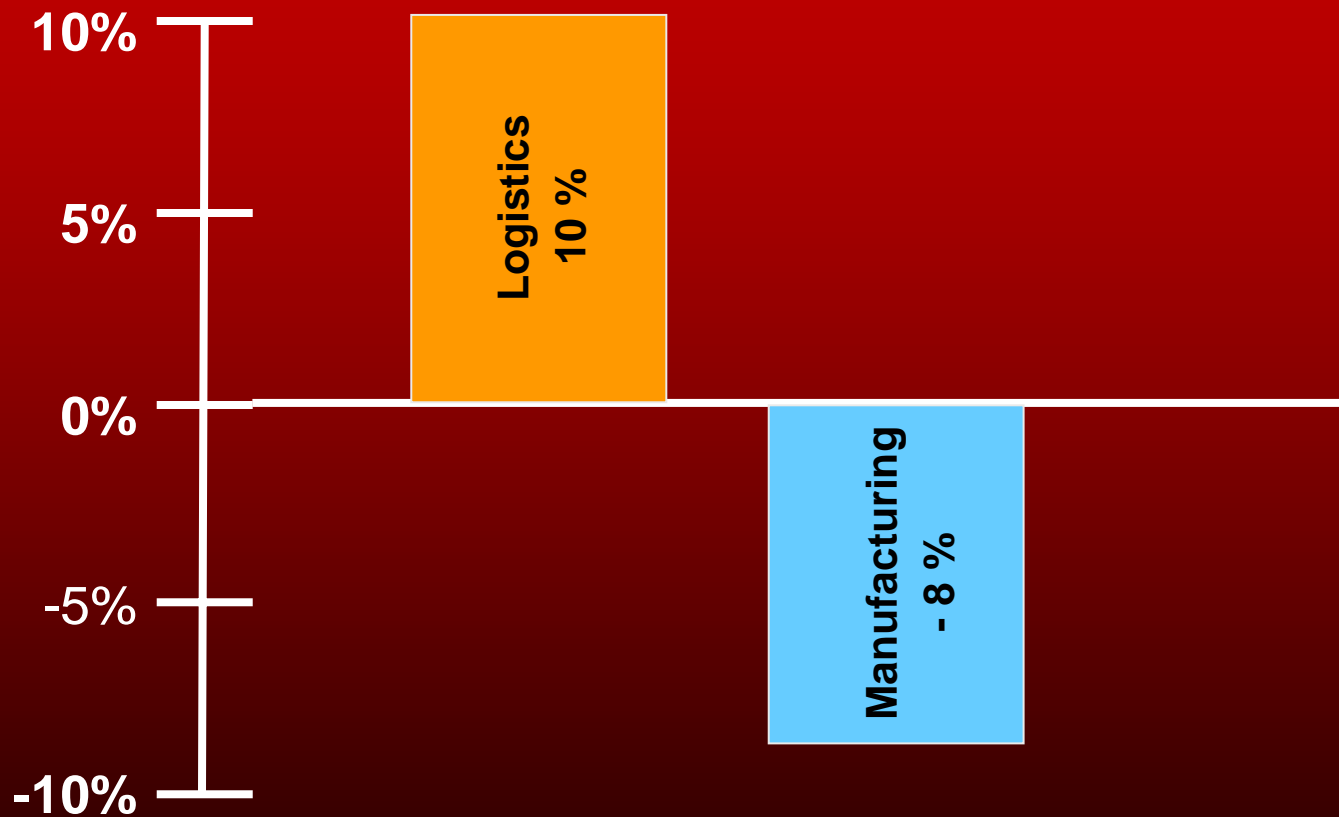


# Compared to Other Sectors





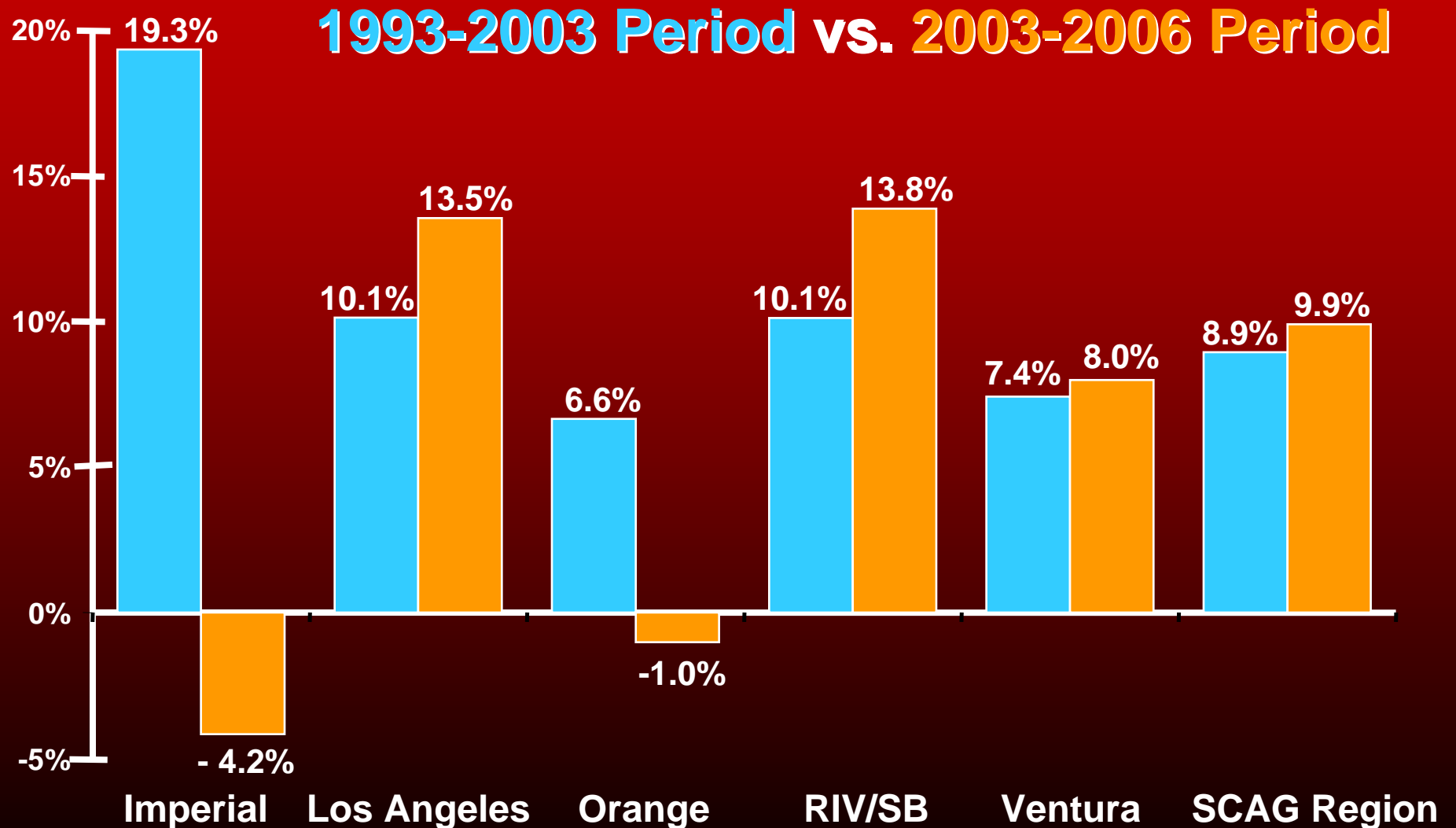
# Share of Job Growth 2003 - 2006



Southern California Association of Governments



# Logistic Industry Share of Total Job Growth by County





# Share of SCAG Jobs

% SCAG Jobs

1 of 10 jobs in 2006  
up from 1 of 12 in 2003





# SCAG Region Per Capita Income



Southern California Association of Governments



# **The Logistics Industry**

# **Strategies for Success**

**Southern California Association of Governments**



# Objectives

**1. Develop the transportation infrastructure needed to both permit the sector to grow and to offset the congestion and pollution that its growth implies.**

**2. Finance the development.**



# Strategies

- 1. Develop a regional system of dedicated truckways**
- 2. Expand rail capacity and arterial grade separations at rail crossings**
- 3. Decentralize the airport system**
- 4. Connect airports and centers with high-speed rail system**



# Strategies

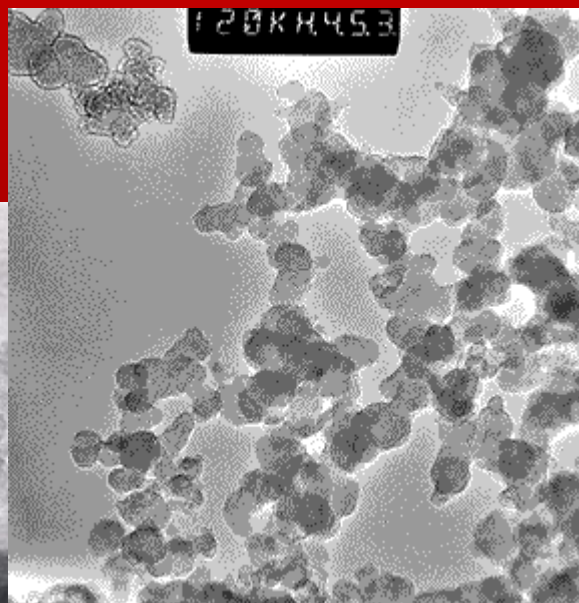
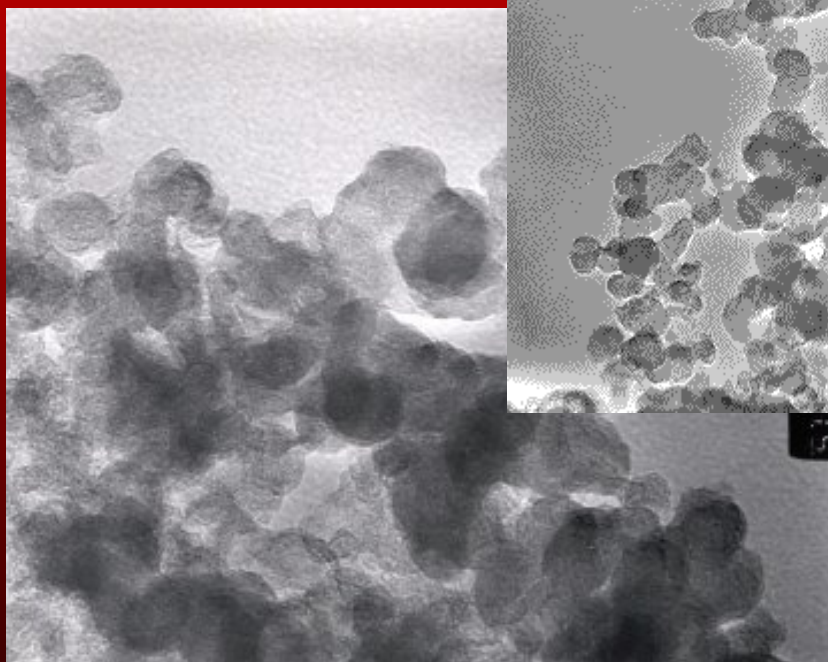


**Simultaneous  
environmental  
mitigation**

**Southern California Association of Governments**



# Diesel Particulates Are at the Root of the Problem



They comprise **71%** of the major pollutants contributing to cancer risk in the South Coast Air Basin

Source: SCAQMD, Multiple Air Toxics Exposure Study II, March 2000

**Southern California Association of Governments**



# **The Financing**

**Public funds are insufficient to finance construction.**

**Execution is dependent upon public/private partnerships, innovative funding, and user-supported, revenue-backed financing**



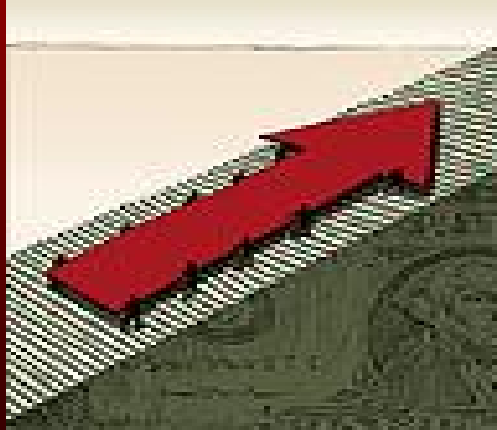
# With Expanded Infrastructure Backbone

1. Potential strength of the Logistics Sectors will be unleashed



2. Path will be created for workers to achieve a higher standard of living

3. Efficiency of Southland's economy will be enhanced



4. Reduced traffic congestion will improve public health and quality of life



# Thank You



**Mark Pisano**  
**Executive Director**

March 9, 2007