

**CALIFORNIA STATE UNIVERSITY**

---

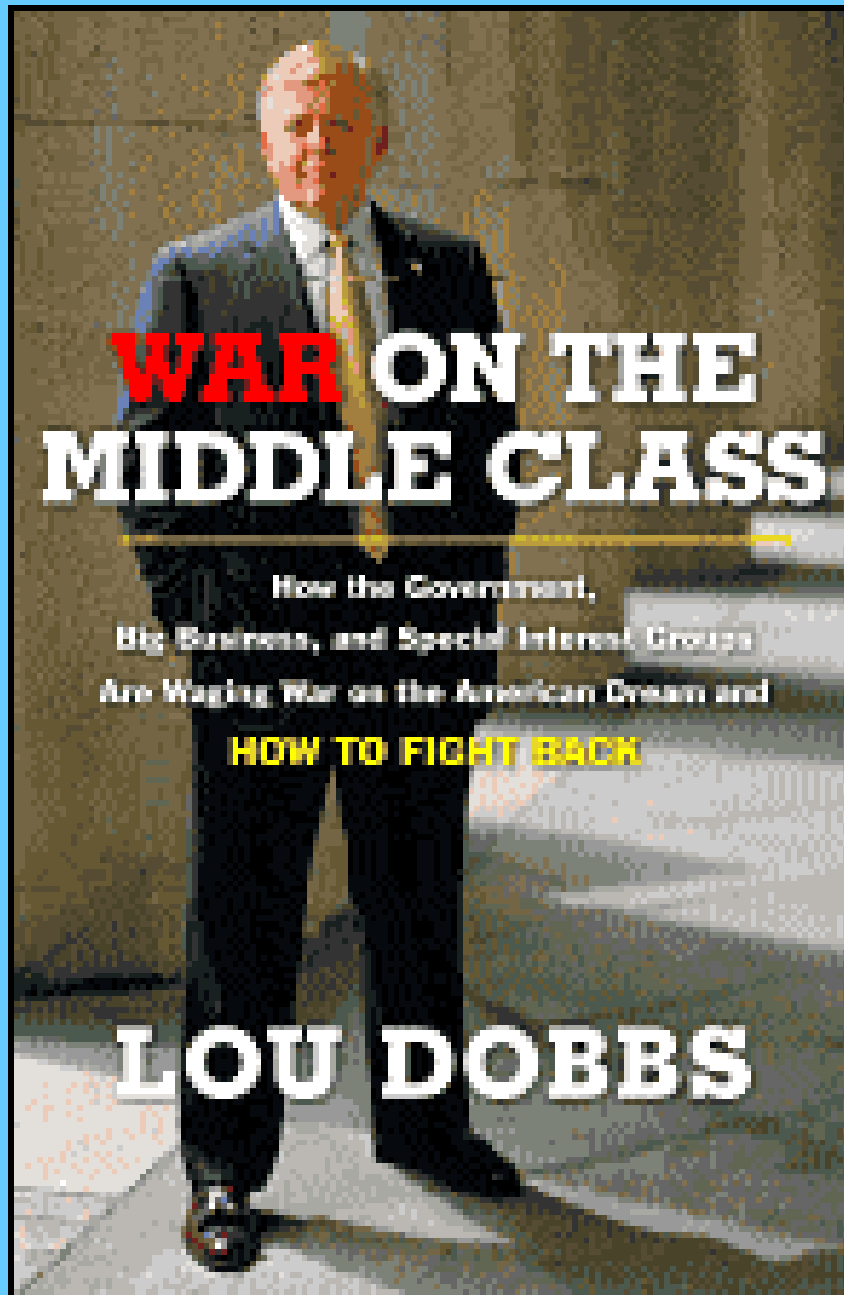
**FULLERTON**

*What is Middle Class?*

**March 9, 2007**

**Anil Puri, Ph.D.**

**Dean, College of Business and Economics  
California State University, Fullerton**



# **WAR** ON THE **MIDDLE CLASS**

How the Government,  
Big Business, and Special Interest Groups  
Are Waging War on the American Dream and  
**HOW TO FIGHT BACK**

**LOU DOBBS**



# What is Middle Class?

Several definitions –

1. Middle is between top and bottom
2. Middle class is the middle-middle class
3. Middle class is professional classes
4. Middle class is made up of three classes
  - a. upper middle
  - b. middle, and
  - c. the lower middle or working class

KOPACKI  
©2008

CONGRATULATIONS!  
WE'VE FINALLY  
ELIMINATED THE  
MIDDLE CLASS!



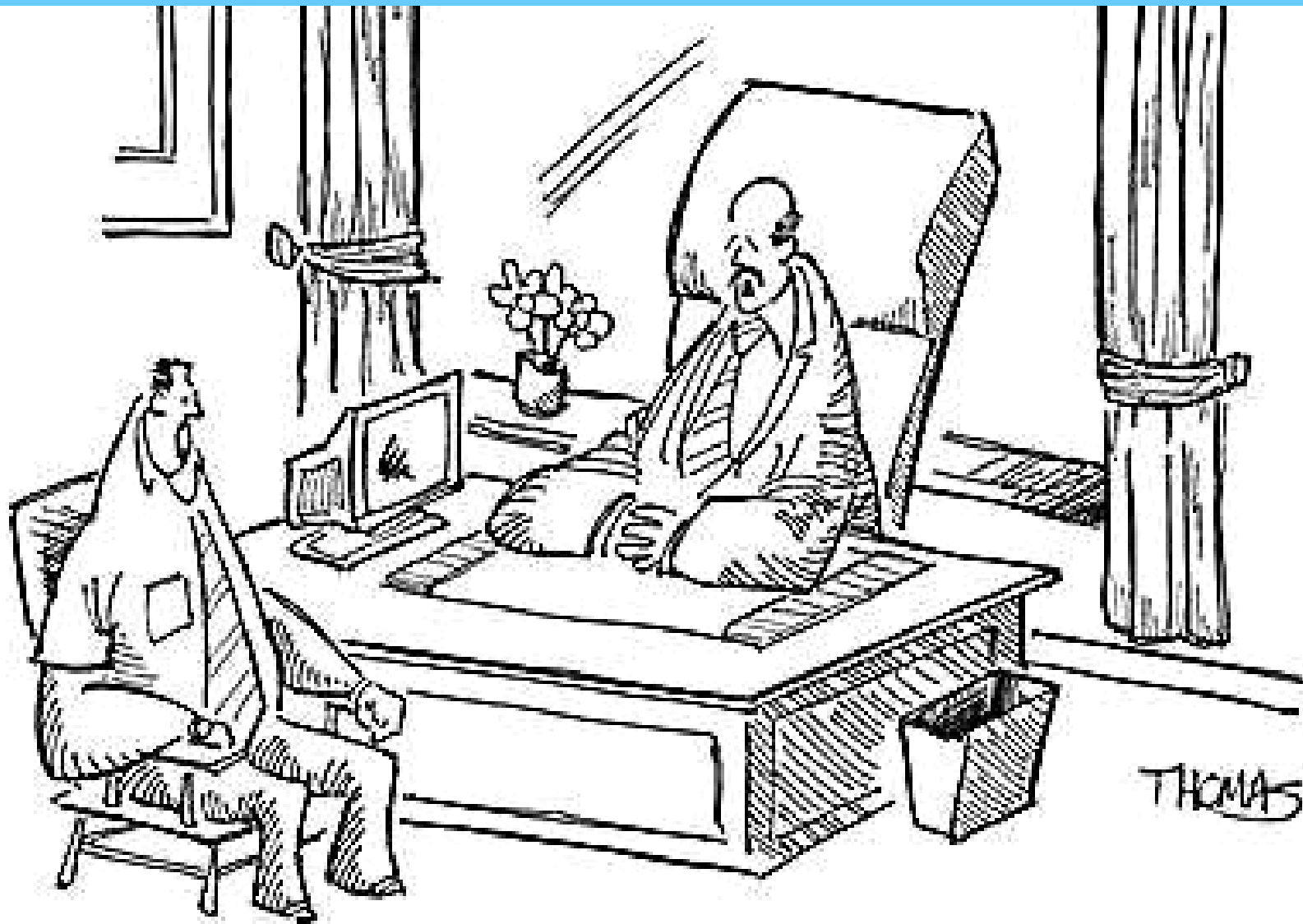
## What is Middle Class?

Several definitions –

1. Middle is between top and bottom
2. Middle class is the middle-middle class
3. Middle class is professional classes
4. Middle class is made up of three classes
  - a. upper middle
  - b. middle, and
  - c. the lower middle or working class

## **Middle-middle class**

**is made of those who are actually in the middle of the income distribution. It may be composed of those with an annual income of 80% to 120% of the national median household income. This is the typical American Average. Income range for such households will be from \$35,200 to \$52,800. Such middle class households cannot actually afford the middle class lifestyles.**



*"I'm prepared to pay you a living wage. Of course, what kind of a living you get out of it is entirely up to you."*

## What is Middle Class?

Several definitions –

1. Middle is between top and bottom
2. Middle class is the middle-middle class
3. Middle class is professional classes
4. Middle class is made up of three classes
  - a. upper middle
  - b. middle, and
  - c. the lower middle or working class

## Upper middle class

**consists mostly of white-collar professionals who are highly educated with household incomes of \$100,000+, and individuals making above \$62,500 living in such households. The national median household income is \$46,000 and individual median income is \$32,000 in 2003 dollars. Upper middle class is estimated to be about 15% of the population.**

## **Lower middle class**

**is the most populous of classes and is about the same size as the working class, approximately one-third of the population. It consists of “semi-professionals” and lower-skilled white collar workers.**

**Upper Class (1-5%):** CEOs and other high income individuals

**Upper Middle Class (15%)** White collar professionals, great autonomy, graduate degrees, commonly \$62,500+ (\$100K+ for households with 2 income earners)

**Lower Middle Class (30-33%):** Semi-professionals, bachelor's degree or some college, limited autonomy, commonly \$32,500 - \$60,000.

**Working Class (30-33%):** Clerical, service and blue collar, minimal autonomy, high school or perhaps some college, commonly \$15,000 - \$32,000.

**Poor (17 – 20%):** Frequently unemployed, below the poverty line, often no high school degree, below \$15,000.

## Income in the United States

### Median Household Income:

Median income of all households: \$46,326  
Households with two income earners: \$67,348

### Median Personal Income:

Males, age 25 or older: \$39,403  
Females, age 25 or older: \$26,507

### Distribution of Household Income:

Lowest 20%: less than \$18,500  
Middle 20%: \$34,738 to \$55,331  
Top 20%: more than \$88,030

Bottom quarter: \$22,500 or less  
Middle 50%: \$22,500 to \$77,500  
Top quarter: \$77,500 or more

Top 1.5%: \$250,000+

Top 5%: \$157,000+

Bottom 5%: \$7,500 or less

Bottom 10%: \$10,500 or less

### Education and Personal Income:

Both Sexes, age 25 or older

High School:	\$26,505	Some college:	\$31,054	Bachelor's degree or more:	\$49,303
Bachelor's degree	\$43,143	Masters degree	\$52,390	Doctorate degree:	\$70,853

### Race and Household Income:

Asian: \$57,518

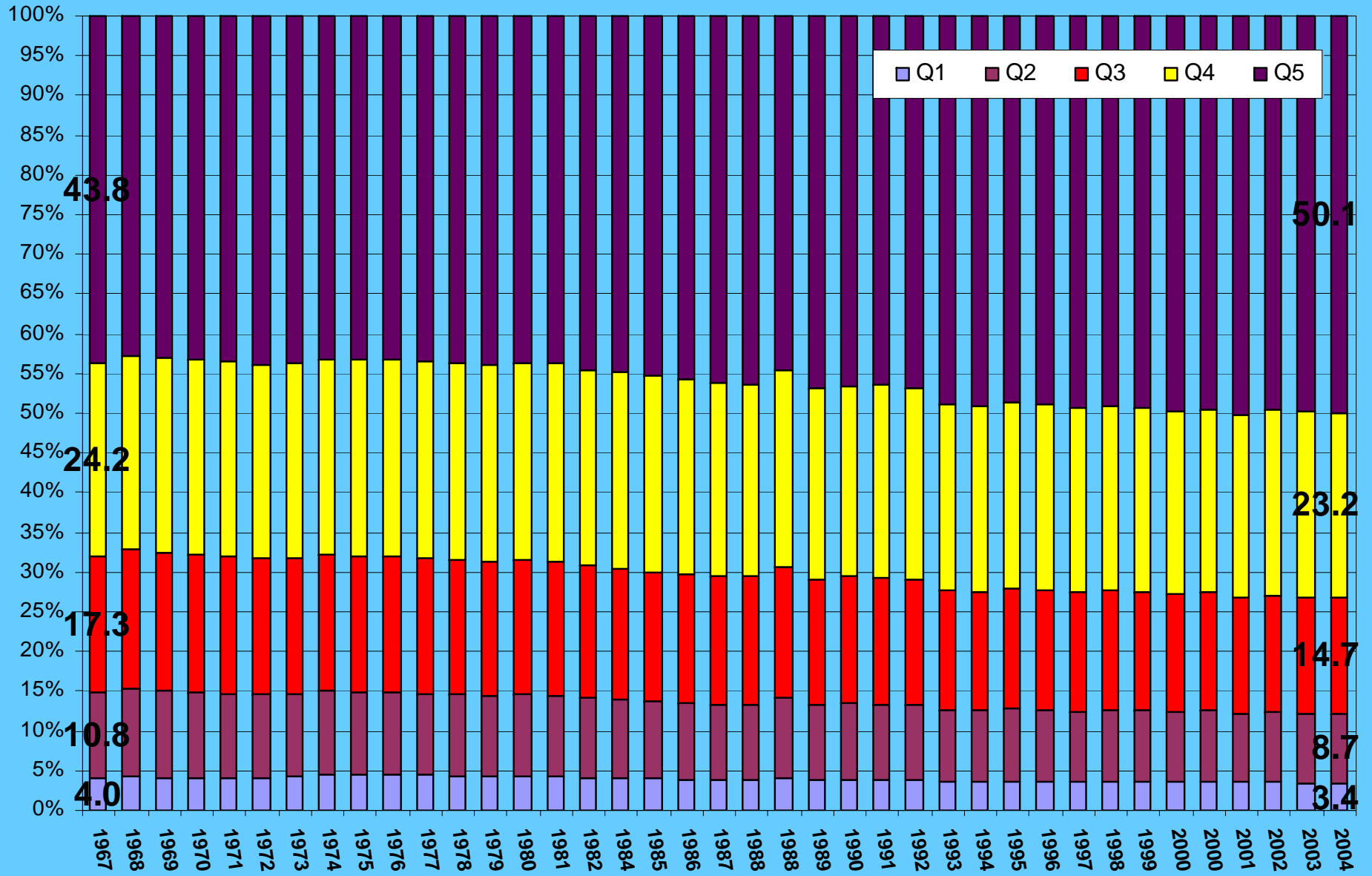
White (non-hispanic): \$48,977

Hispanic: \$34,241

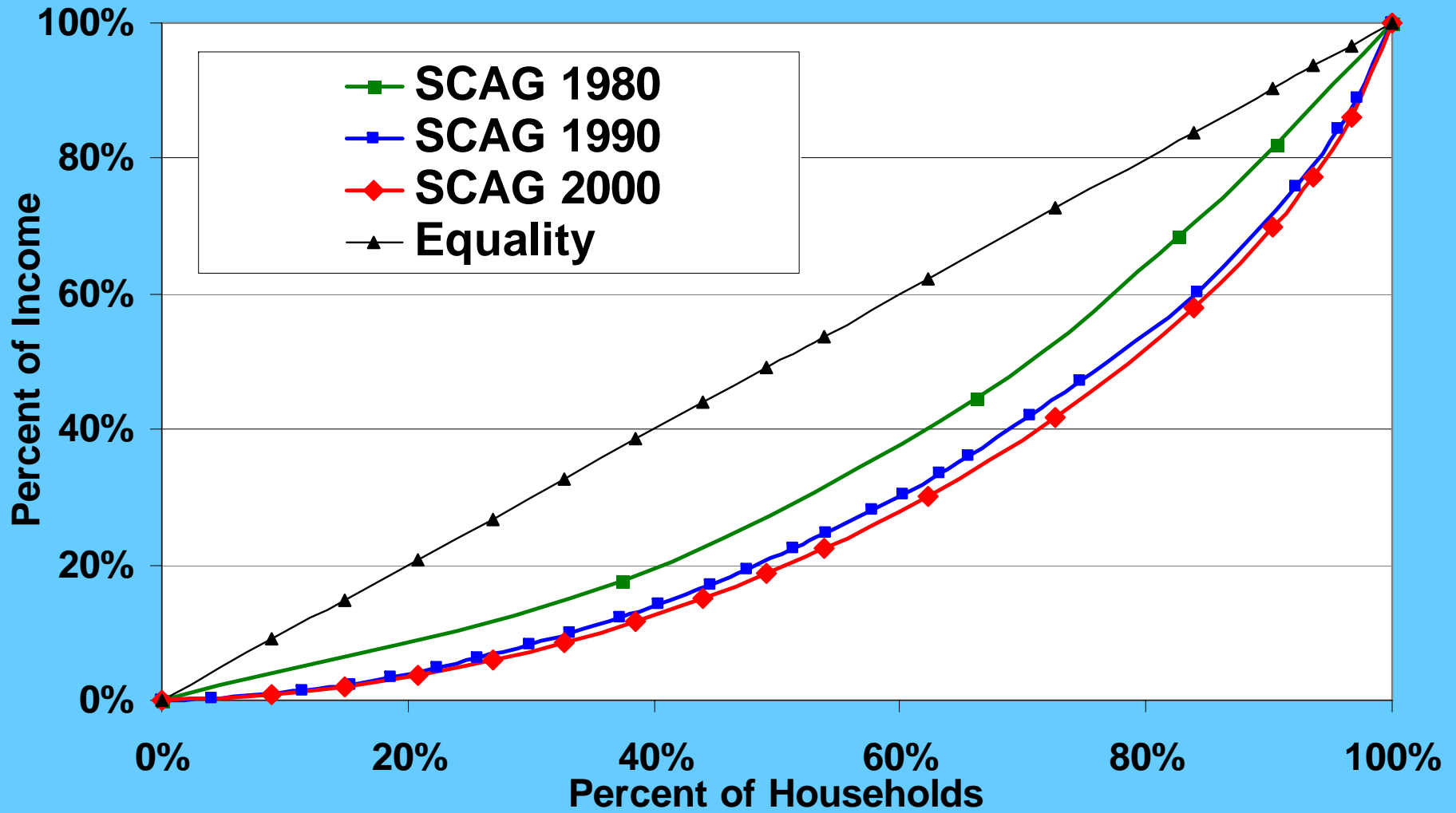
African American: \$30,134

SOURCE: United States Census Bureau, 2006

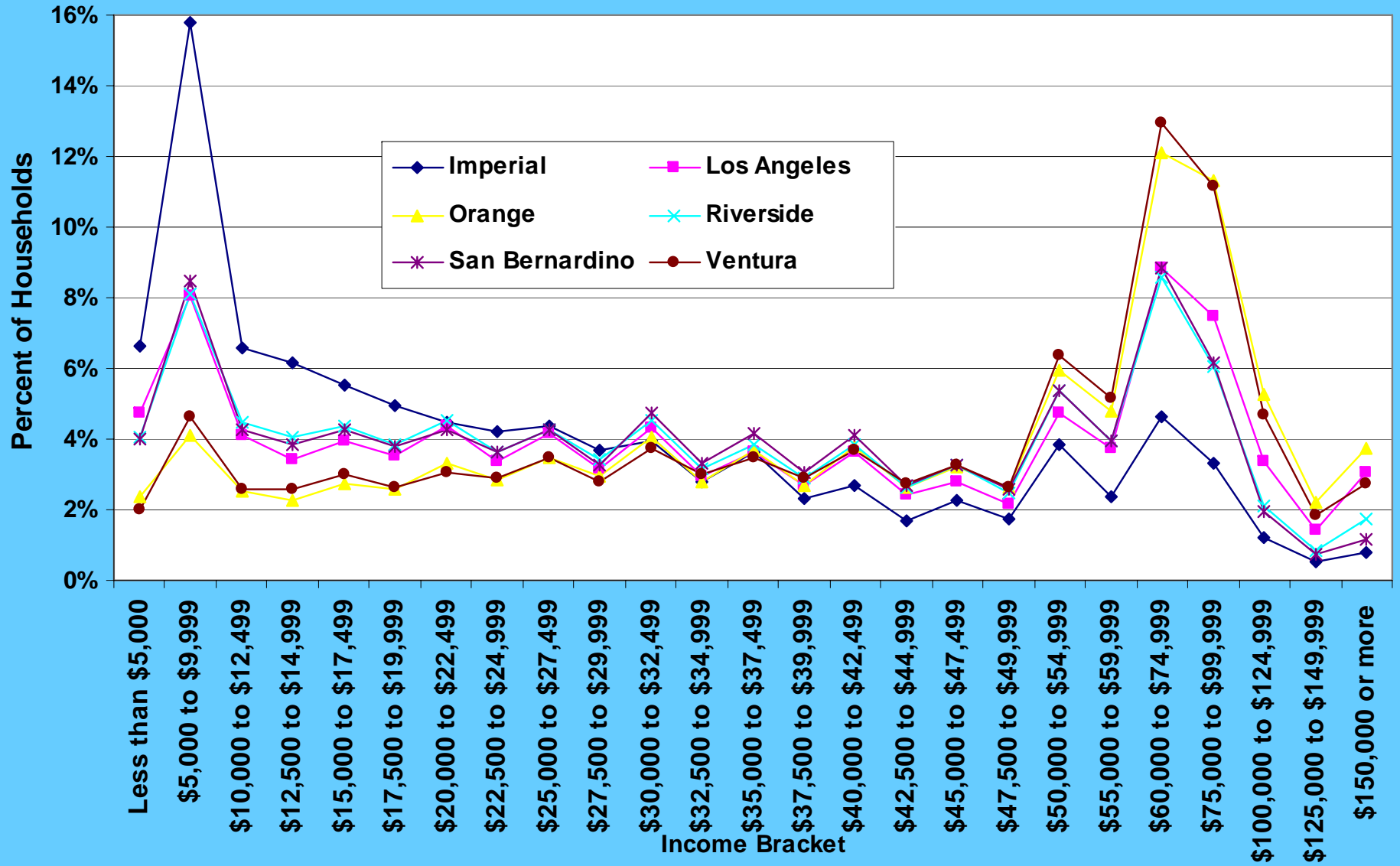
# U.S. Household: Share of Aggregate Income by Income Quintile



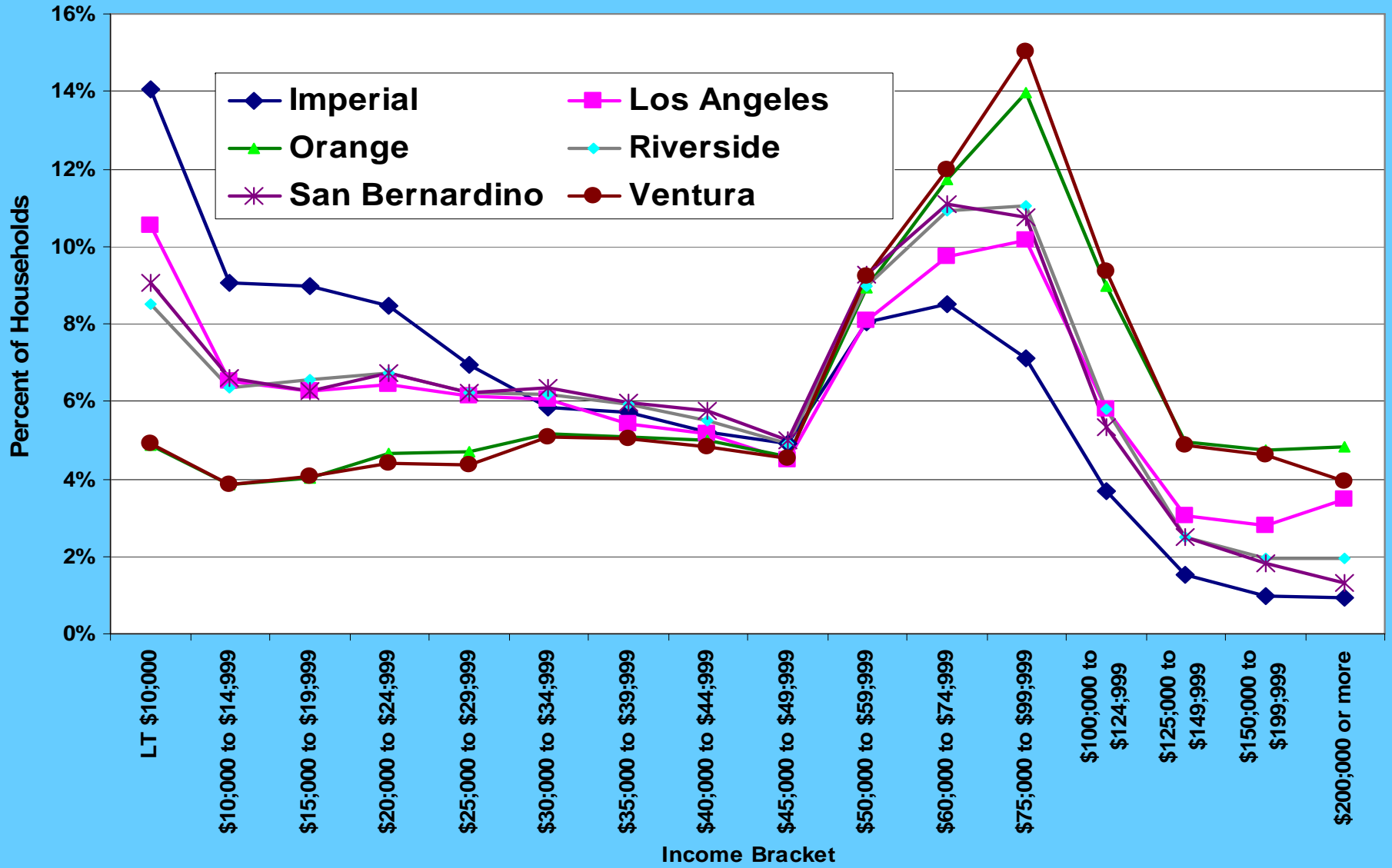
# SCAG Lorenz Curves



# Census 1990 Income Distribution



## Census 2000 Income Distribution



## SCAG Region Income Distribution by County-C2SS Data

