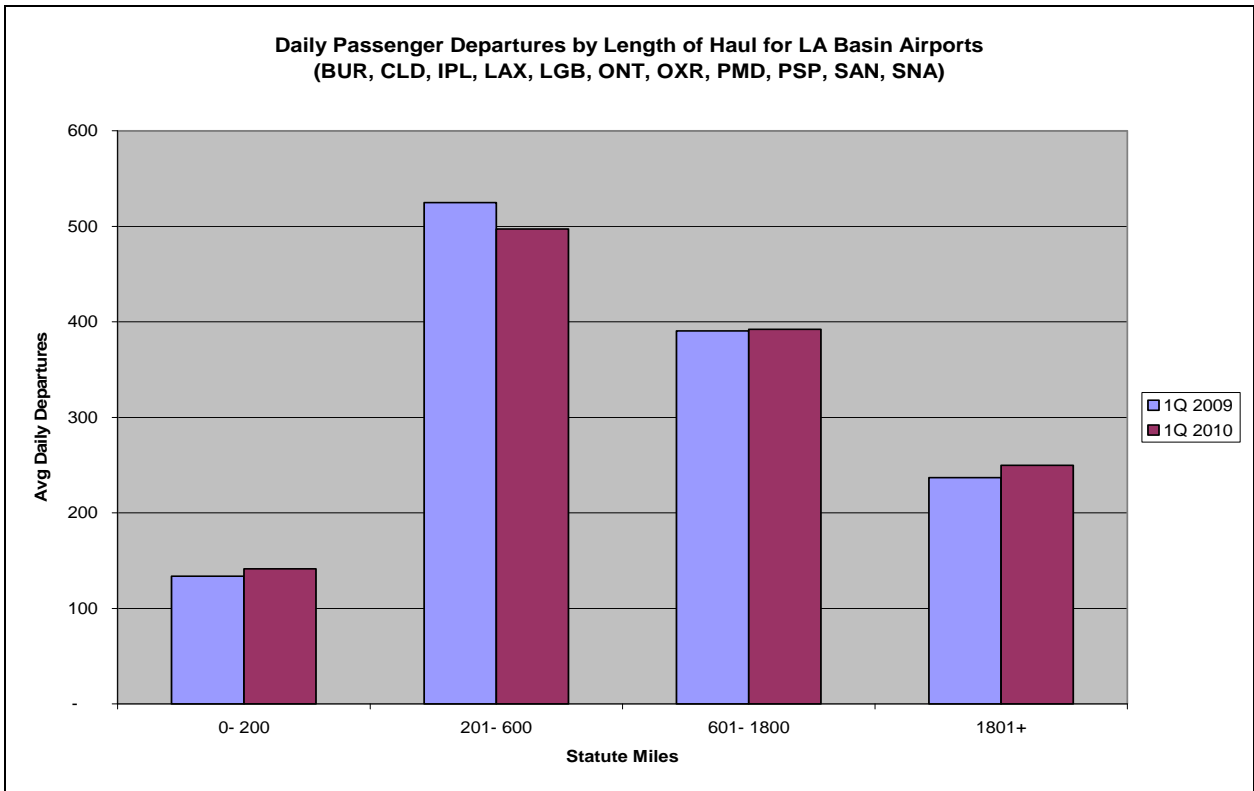


Quarterly Reports for
Southern California Association of
Governments (SCAG)

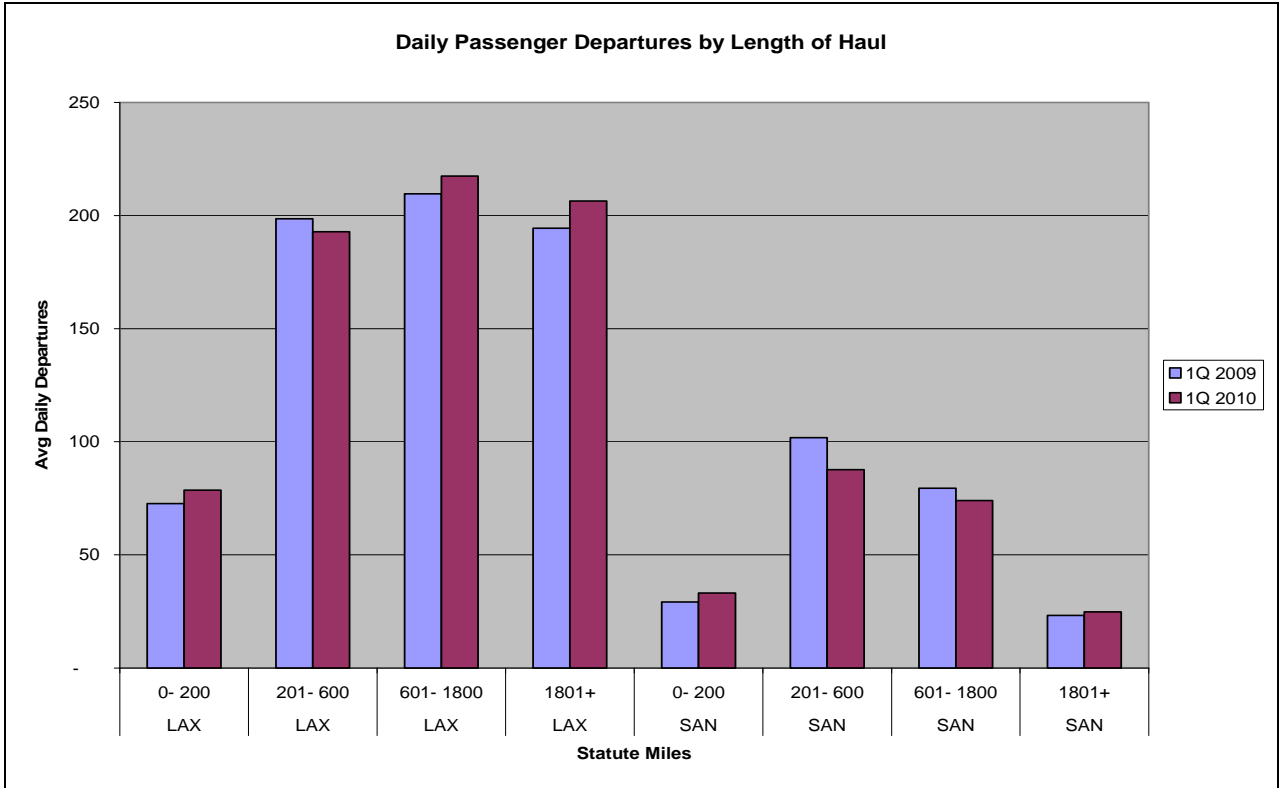
Produced by
OAG Aviation

1st Quarter 2010

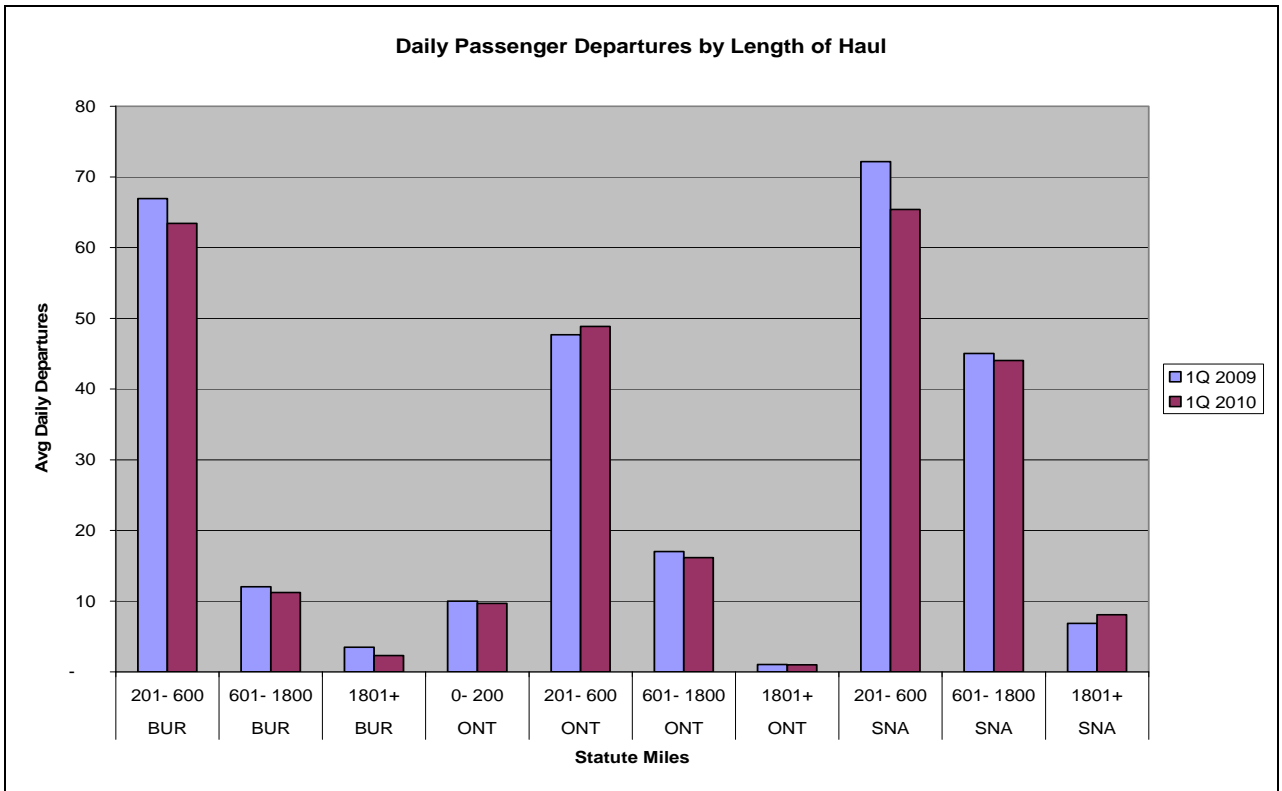


Based on Schedules Data

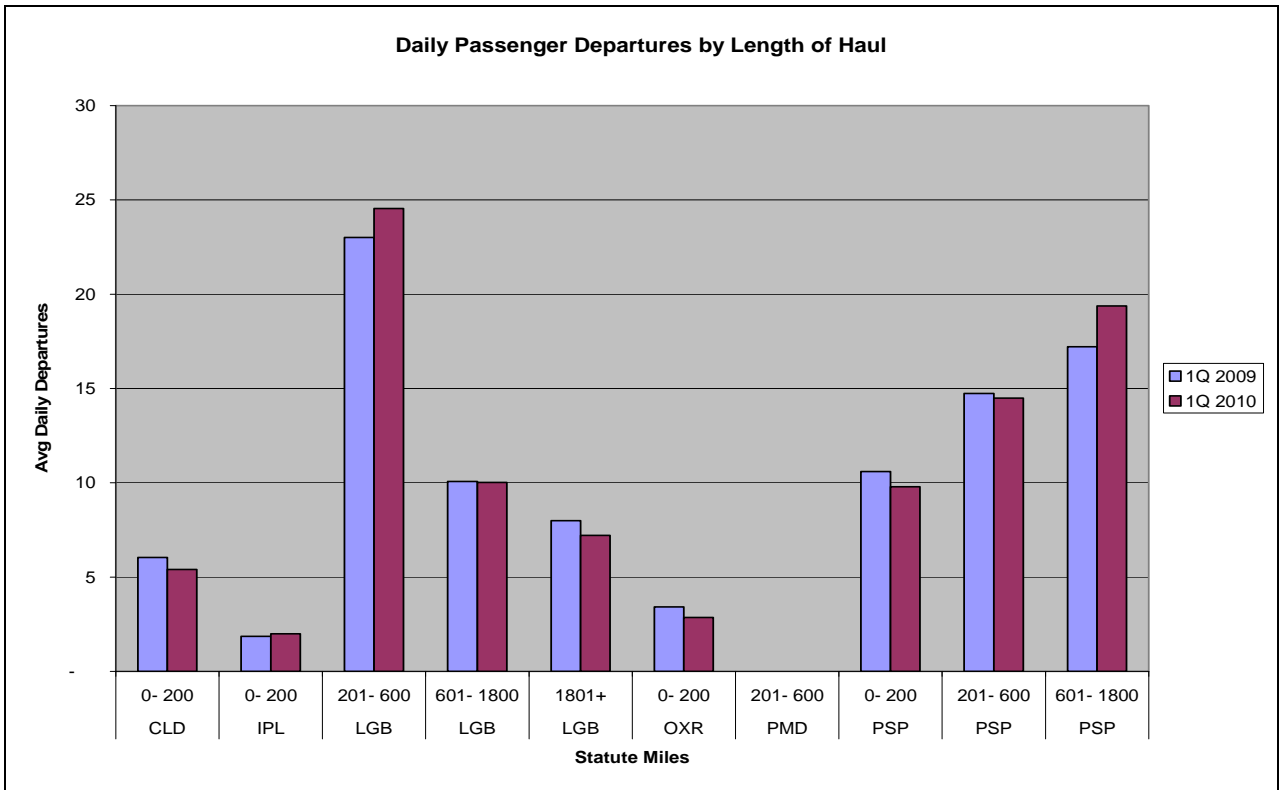
- BUR** – Burbank
- CLD** - Carlsbad (Palomar)
- IPL** - El Centro/Imperial
- LAX** - Los Angeles (Intl)
- LGB** - Long Beach
- ONT** - Ontario
- OXR** – Oxnard/Ventura
- PMD** - Palmdale/Lancaster
- PSP** - Palm Springs
- SAN** - San Diego (Intl)
- SNA** - Santa Ana (J. Wayne)



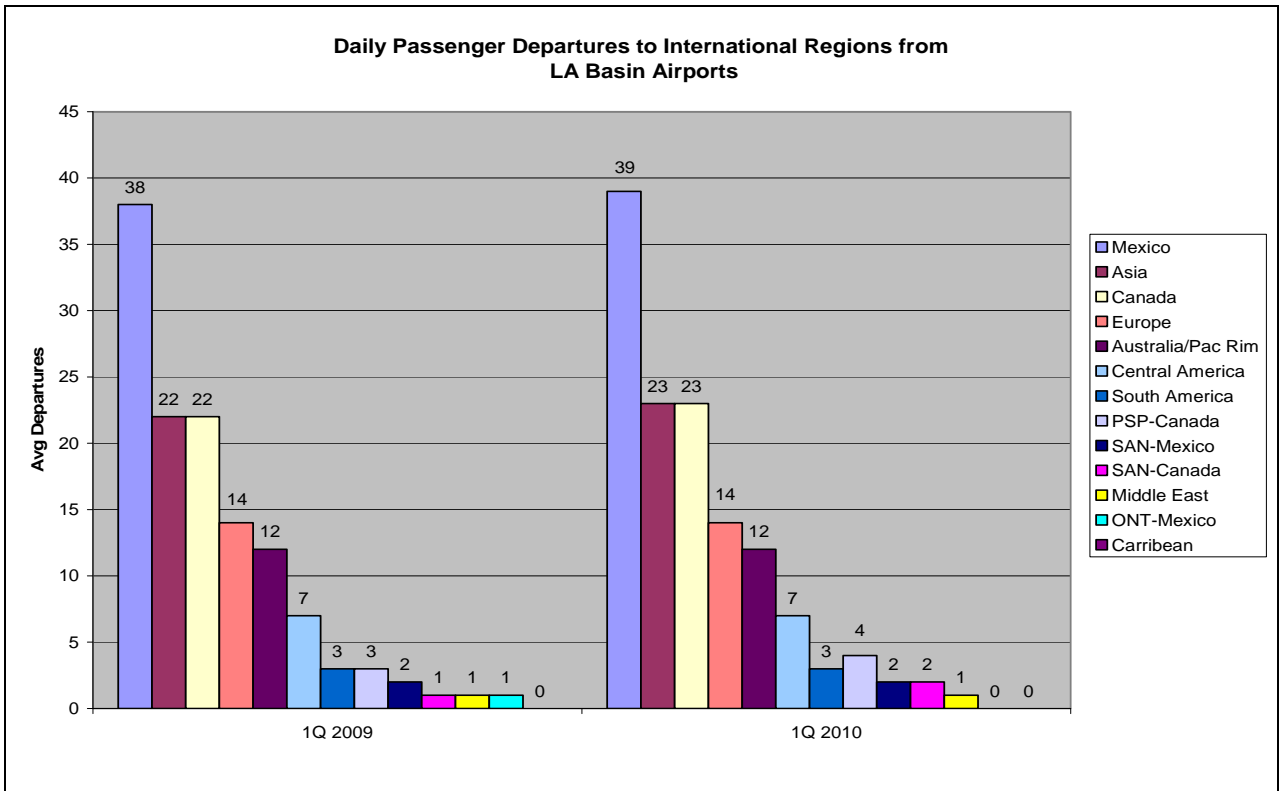
Based on Schedules Data



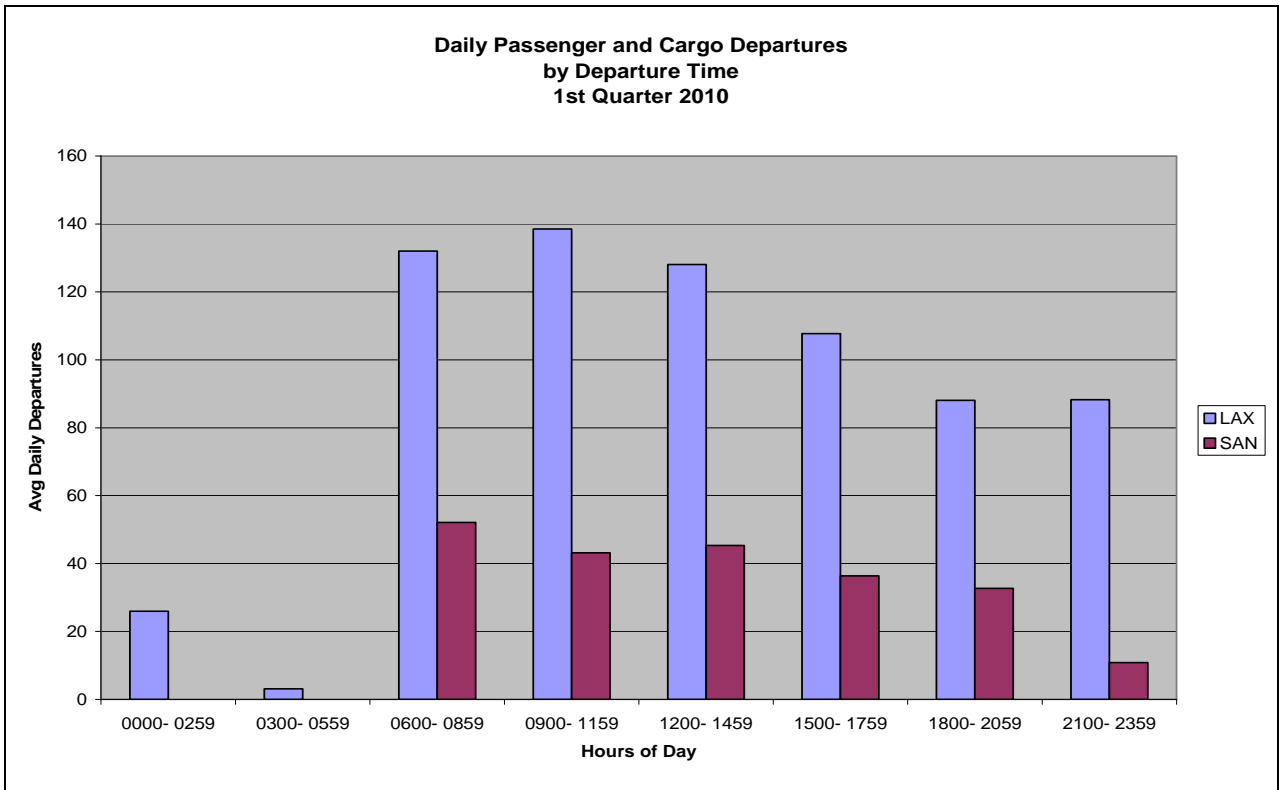
Based on Schedules Data



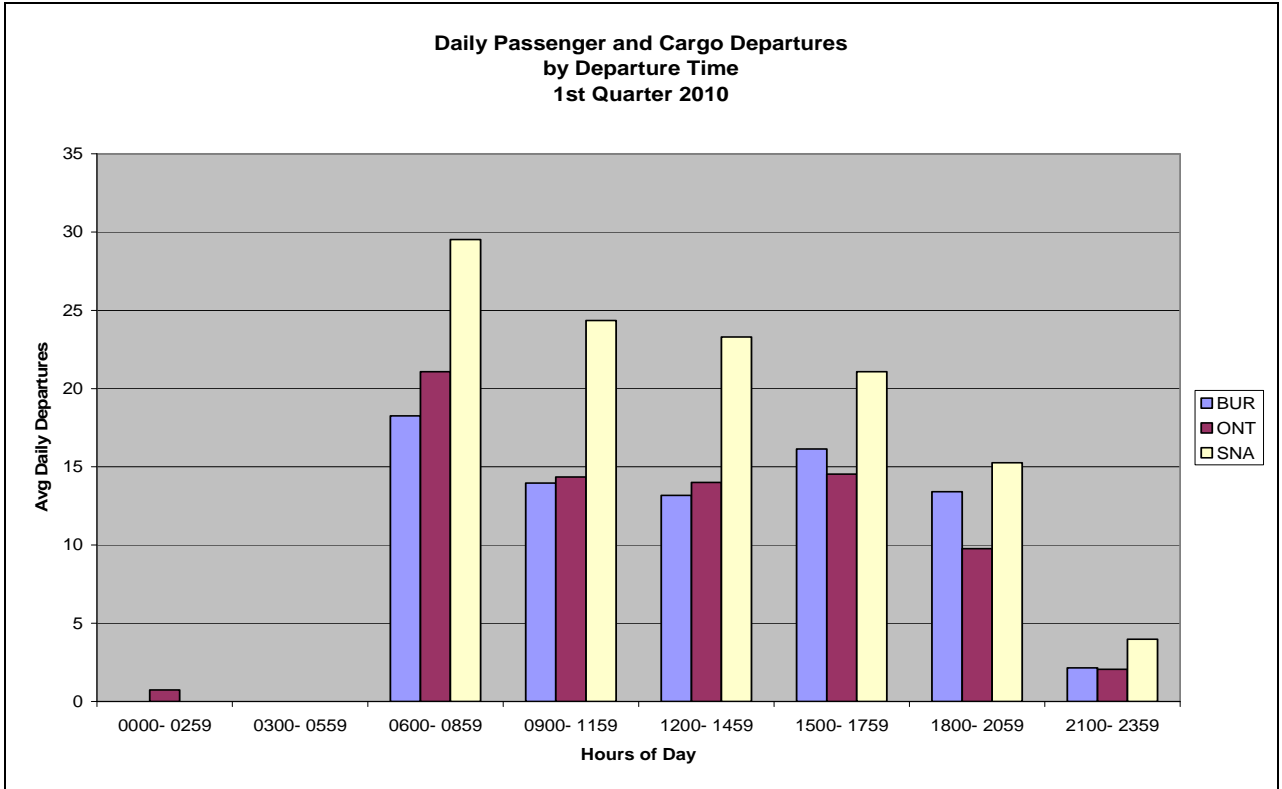
Based on Schedules Data



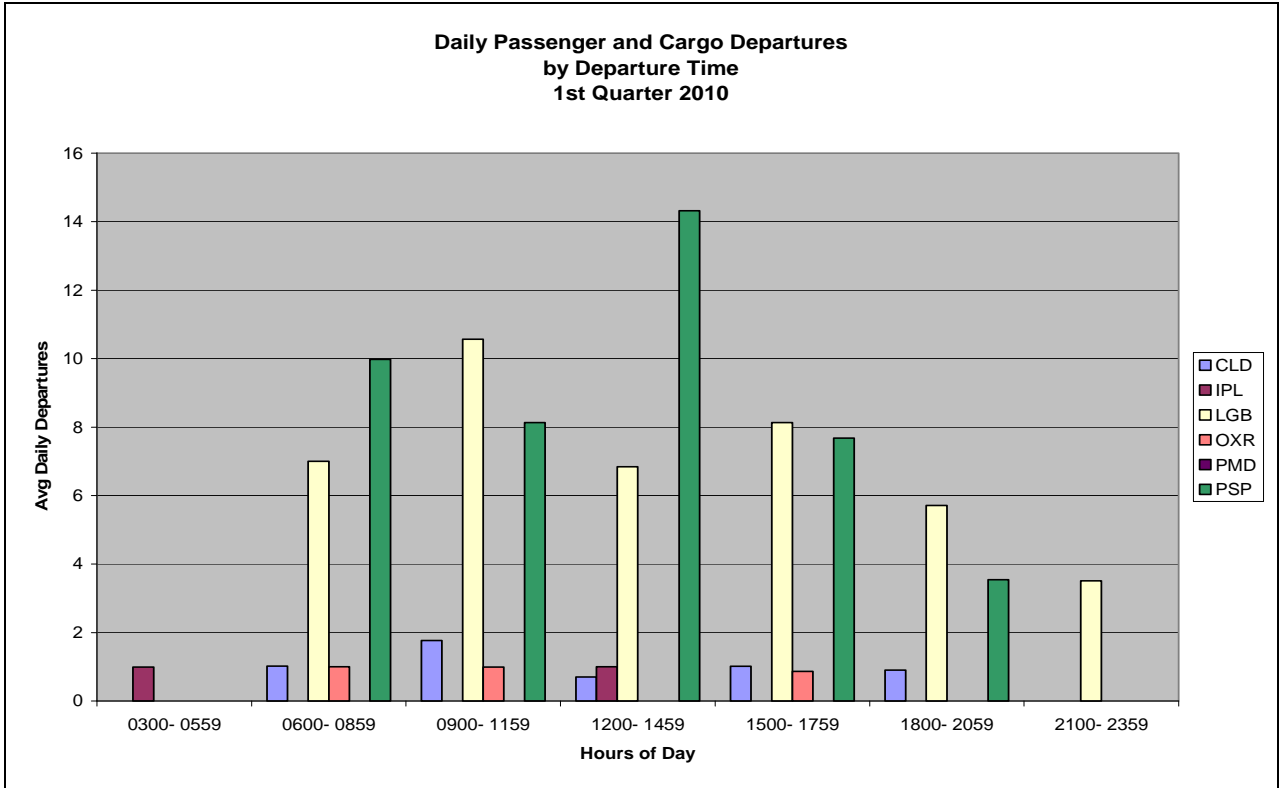
Based on Schedules Data



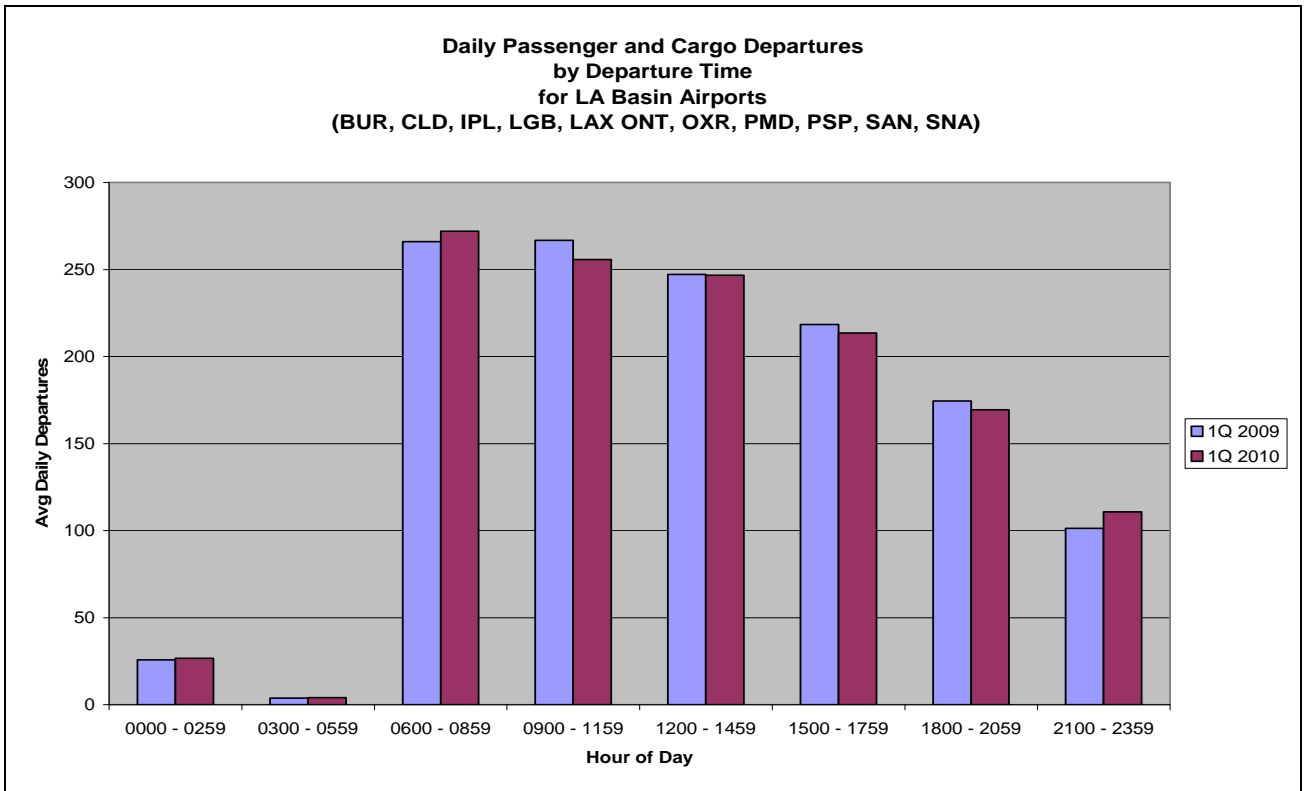
Based on Schedules Data



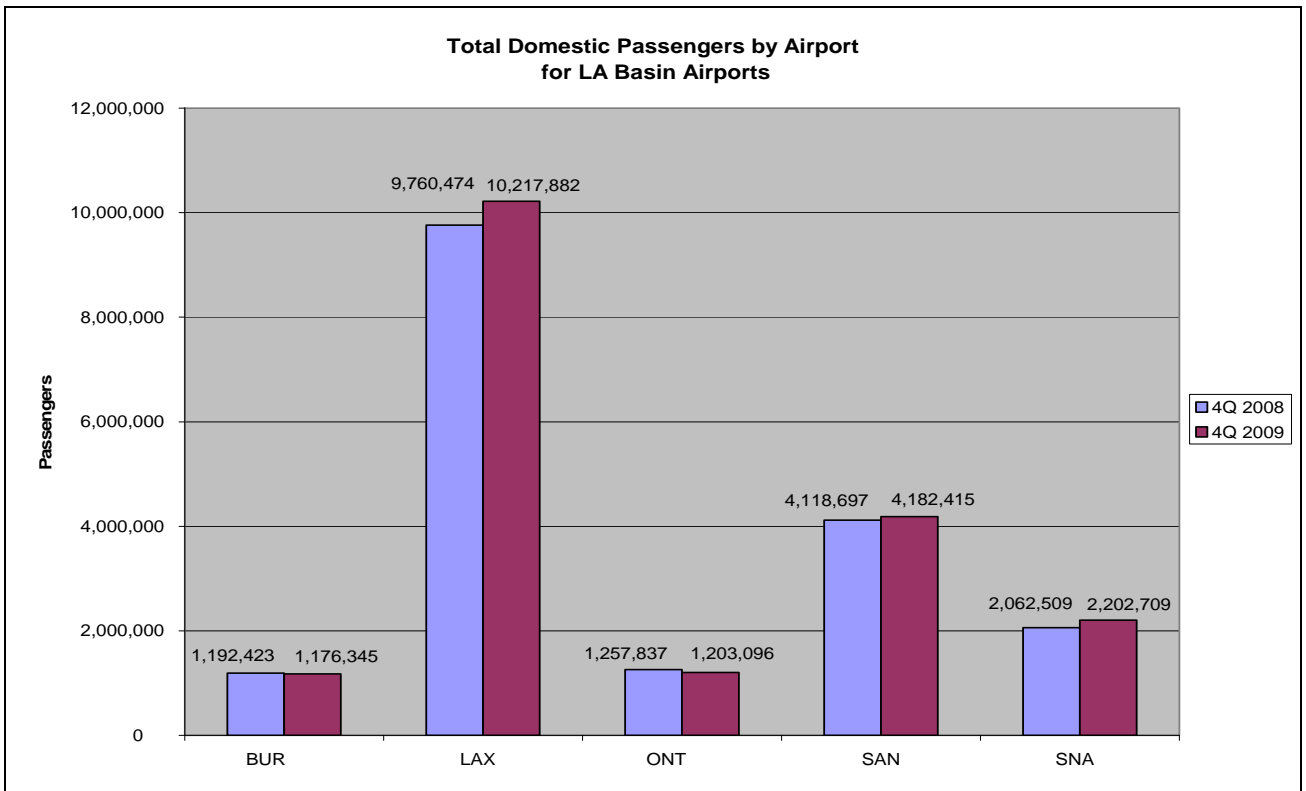
Based on Schedules Data



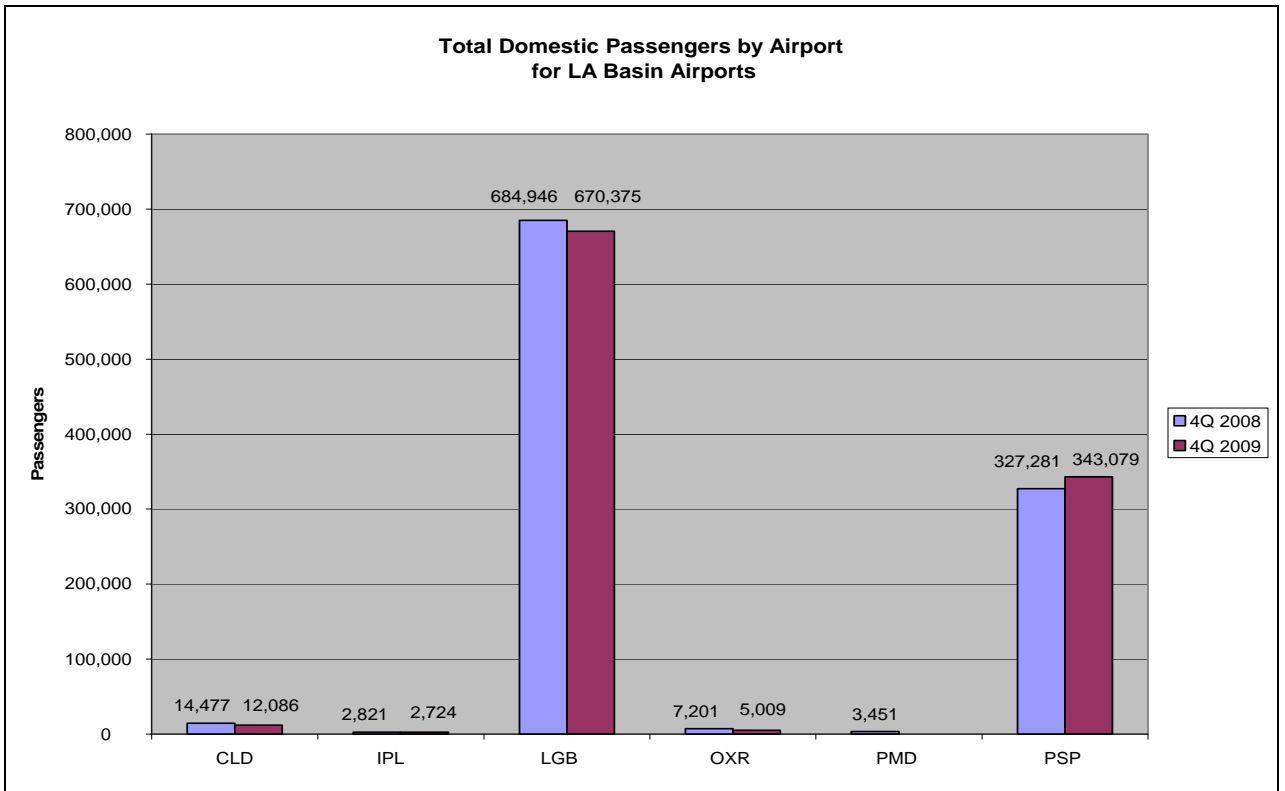
Based on Schedules Data



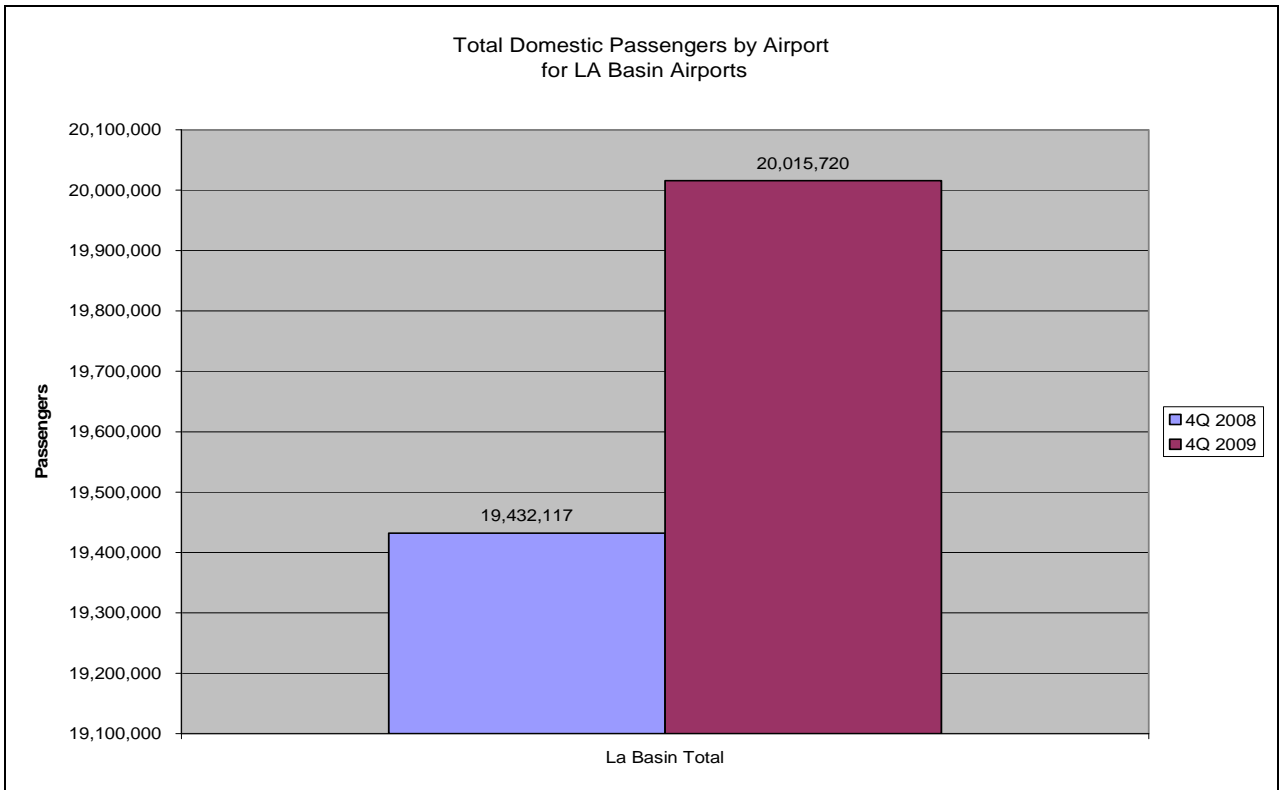
Based on Schedules Data



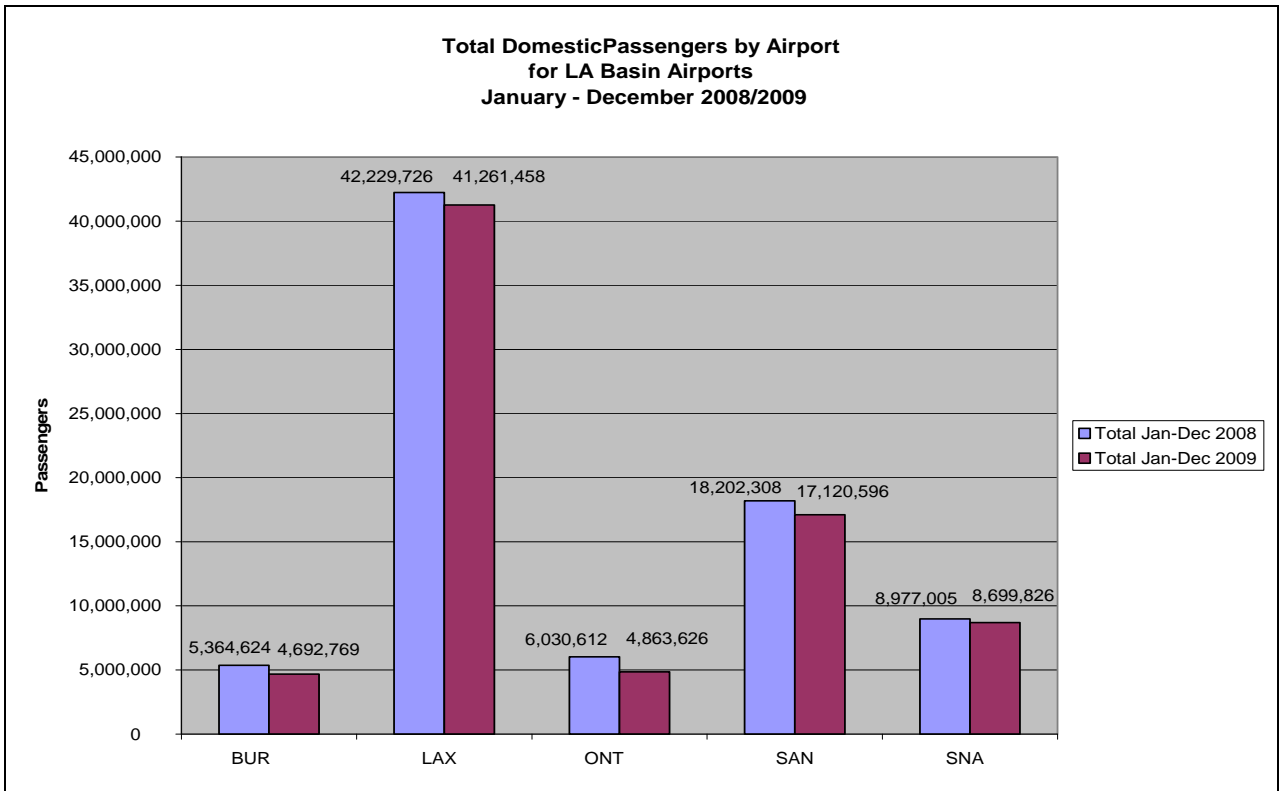
Based on DOT Traffic Data



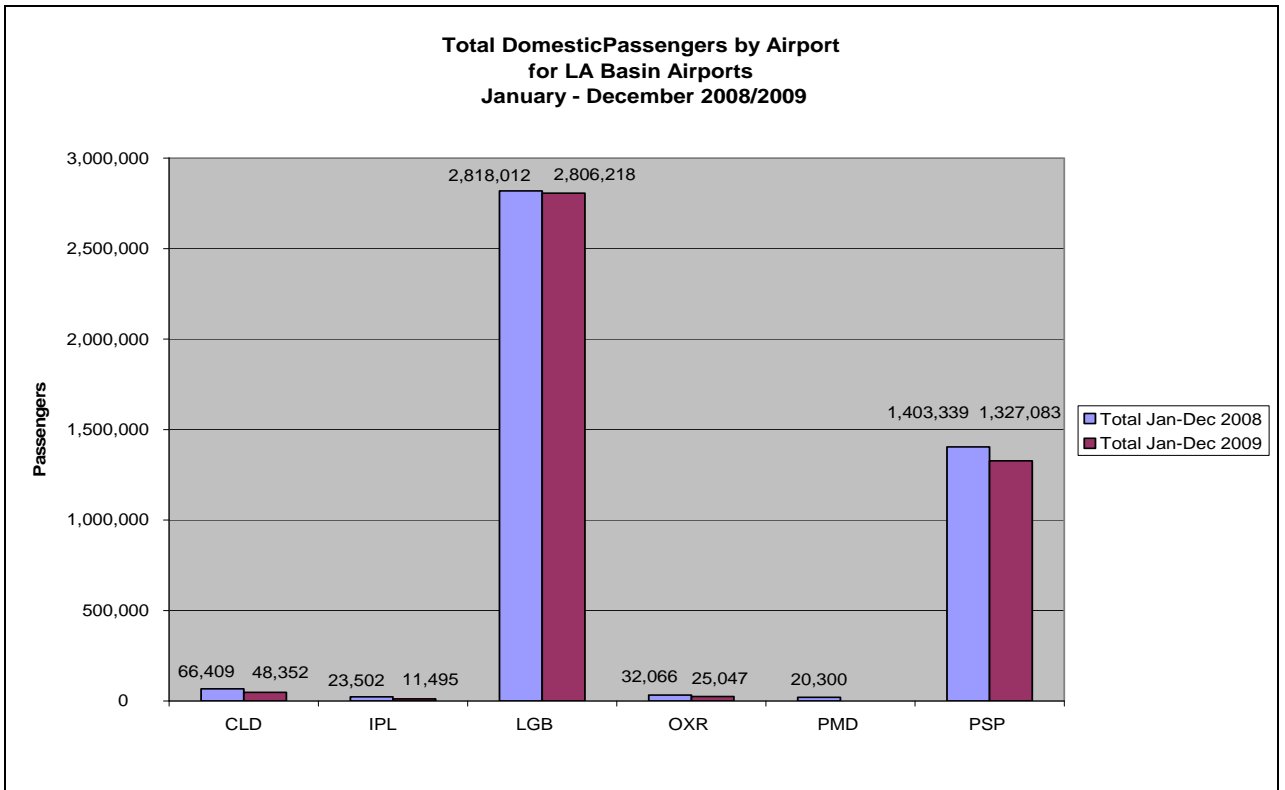
Based on DOT Traffic Data



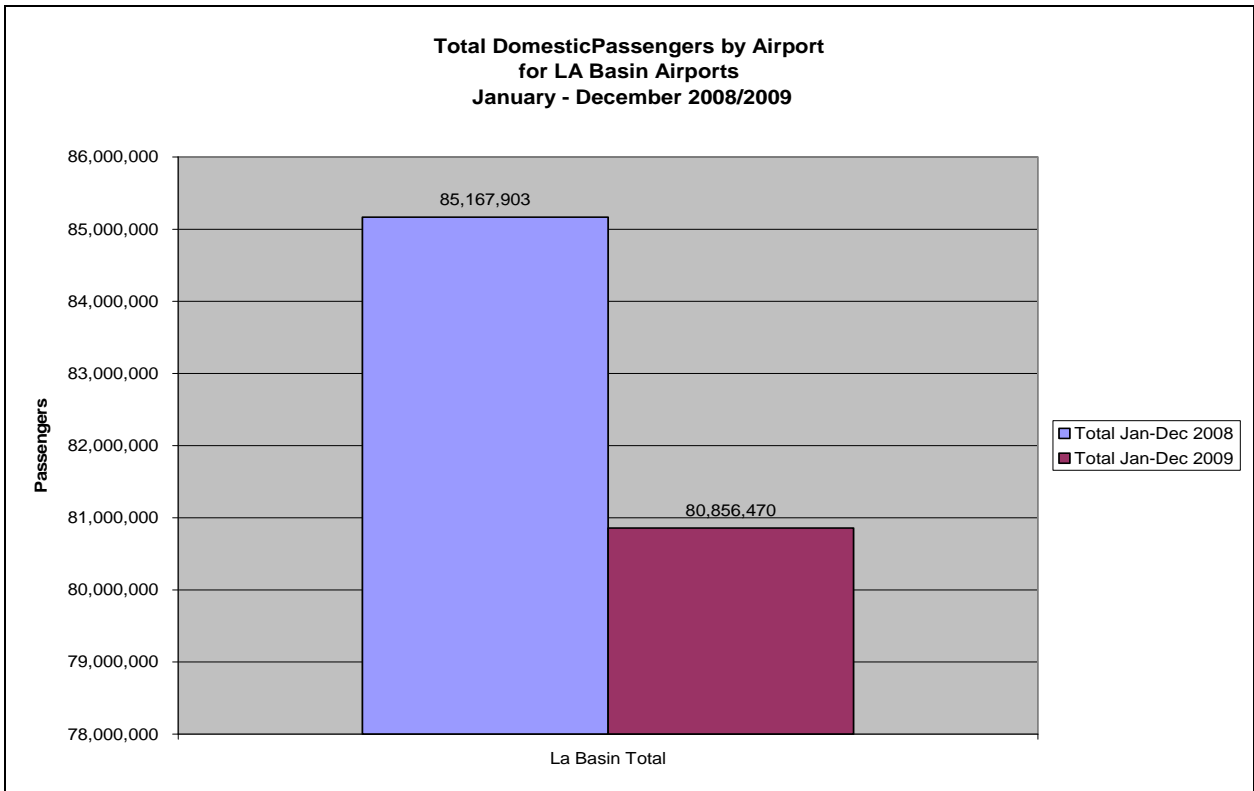
Based on DOT Traffic Data



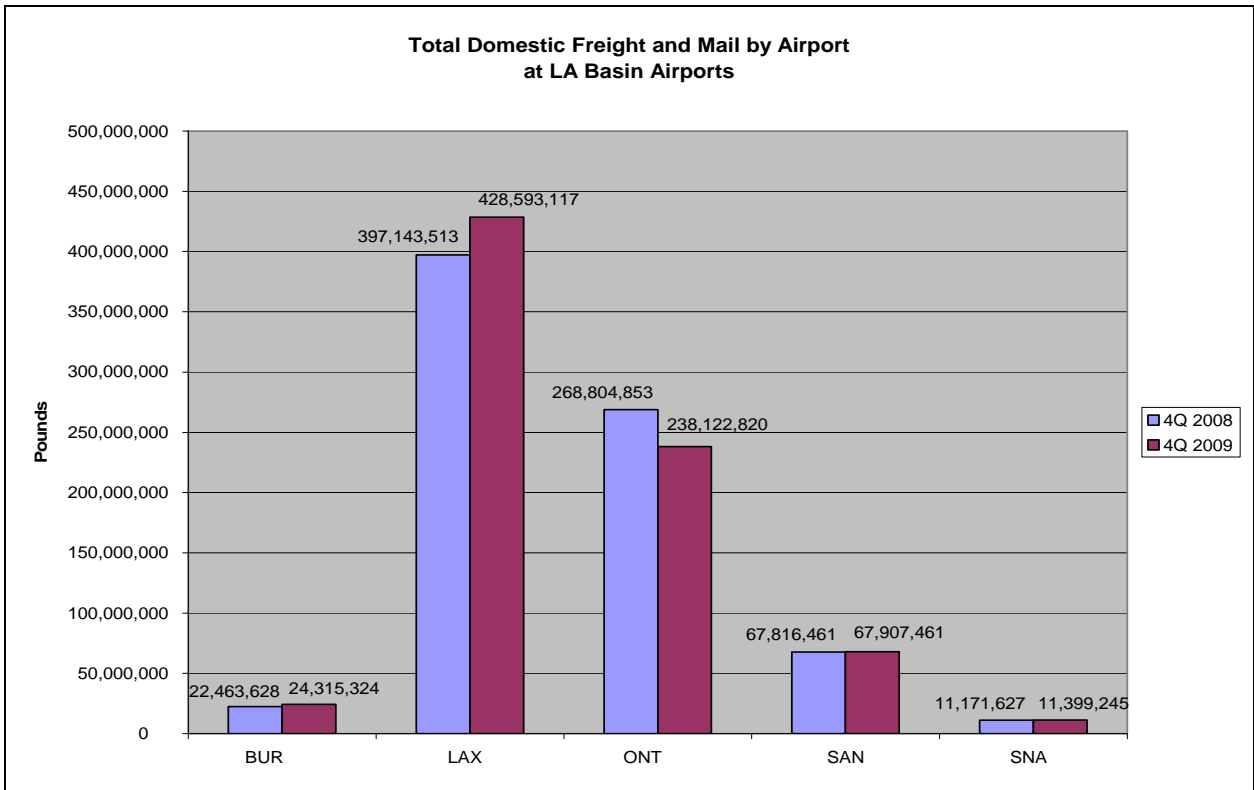
Based on DOT Traffic Data



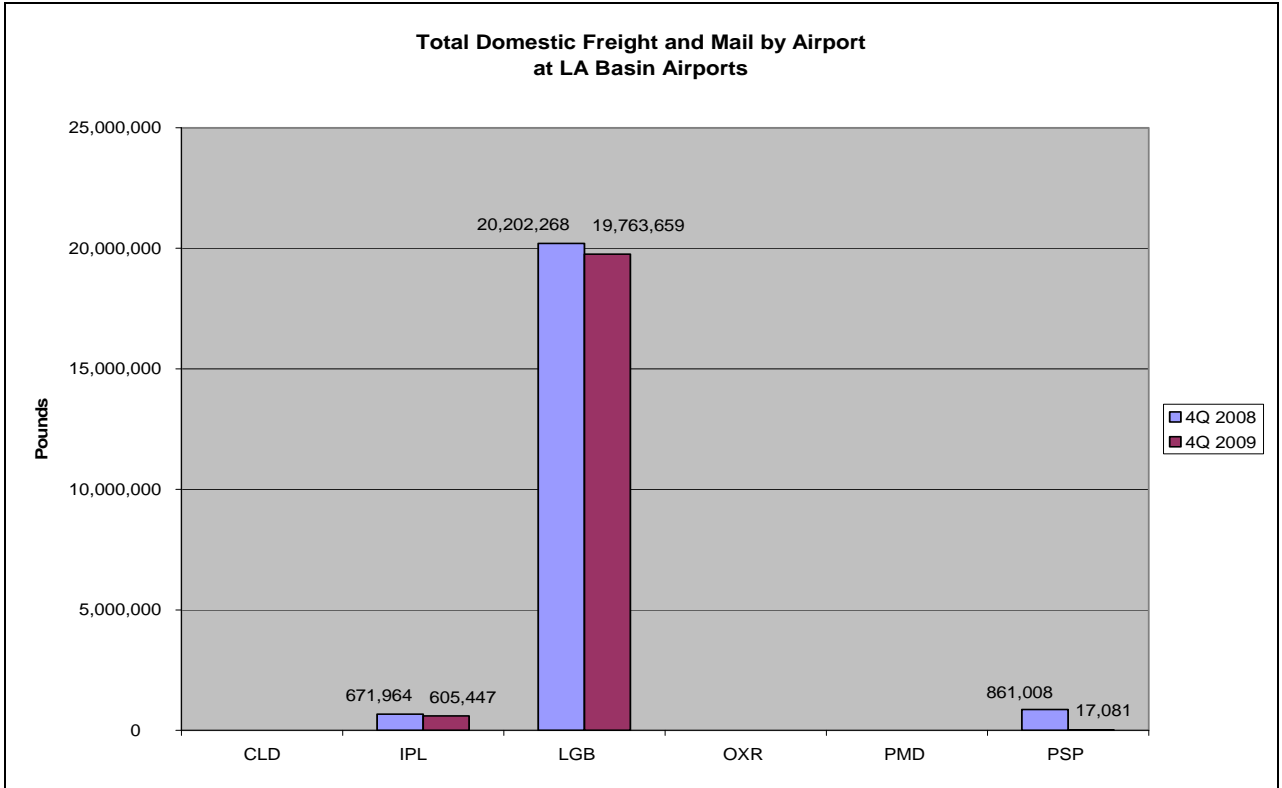
Based on DOT Traffic Data



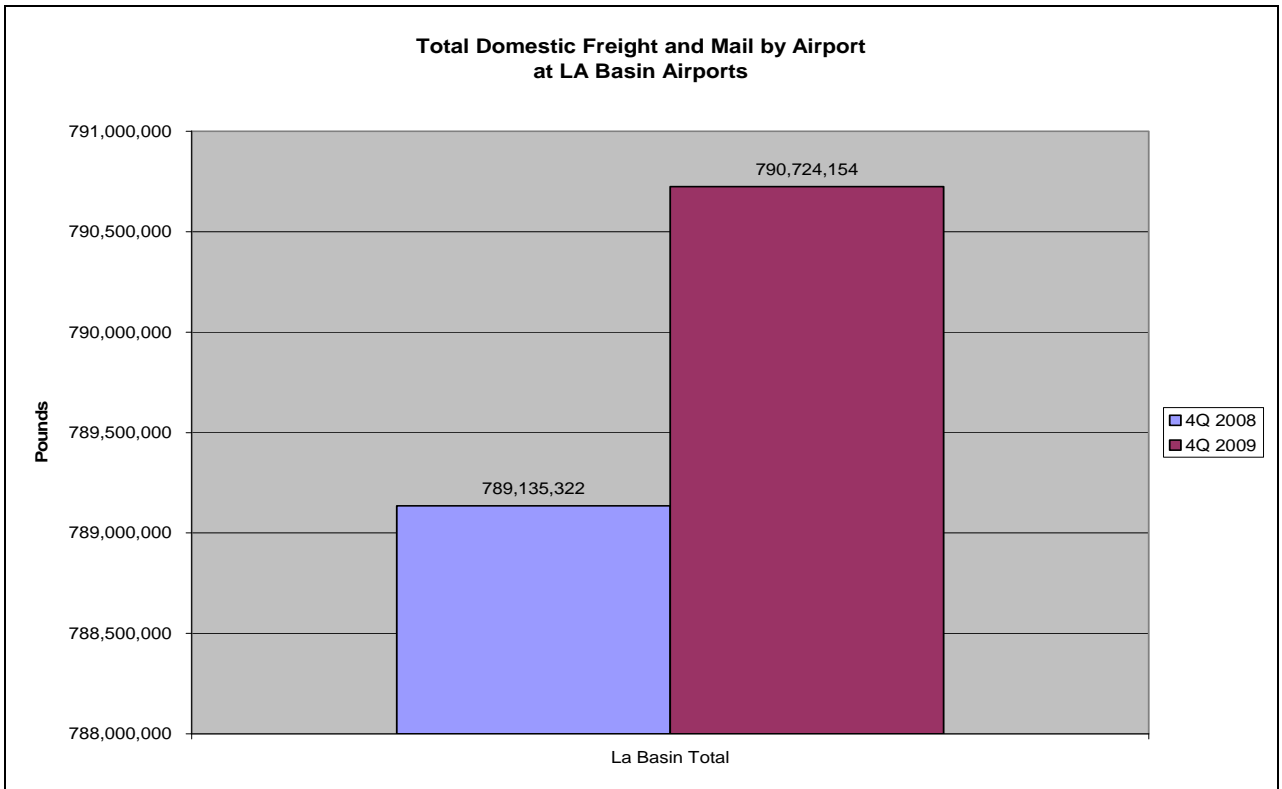
Based on DOT Traffic Data



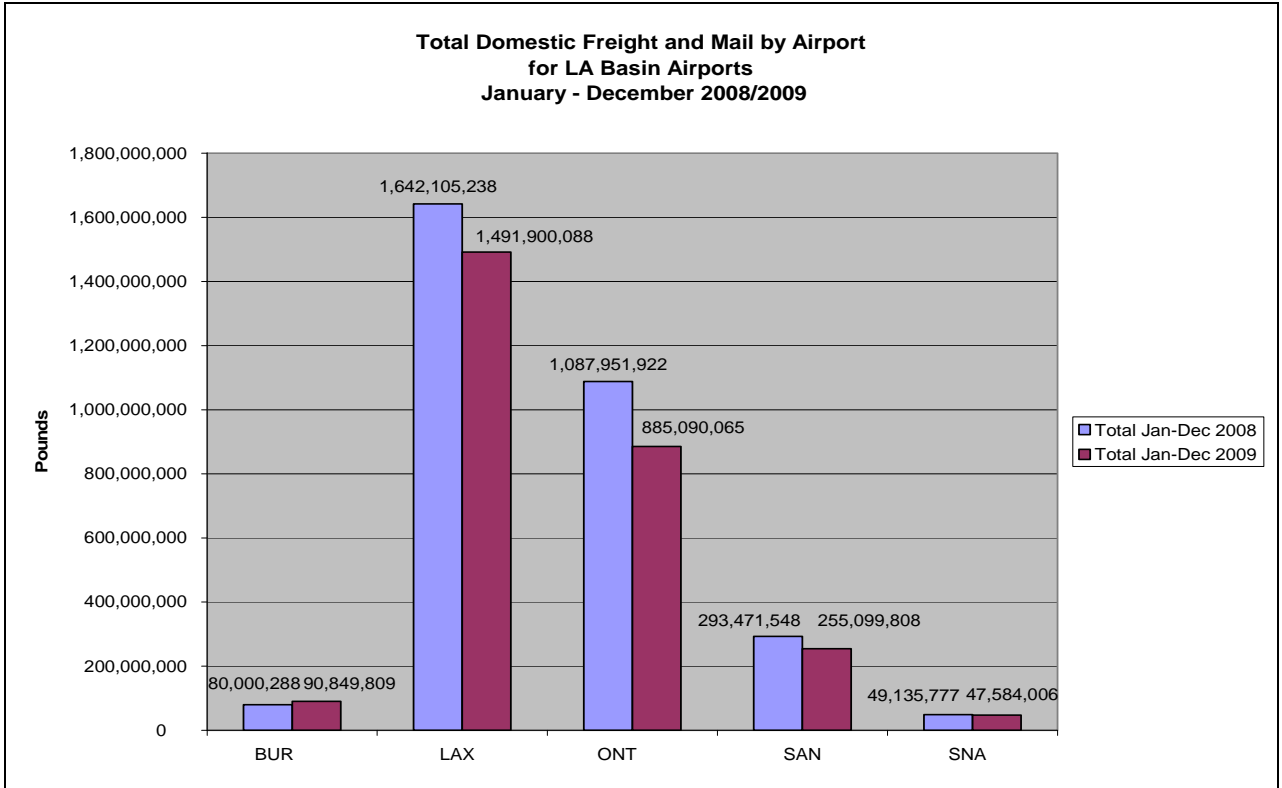
Based on DOT Traffic Data



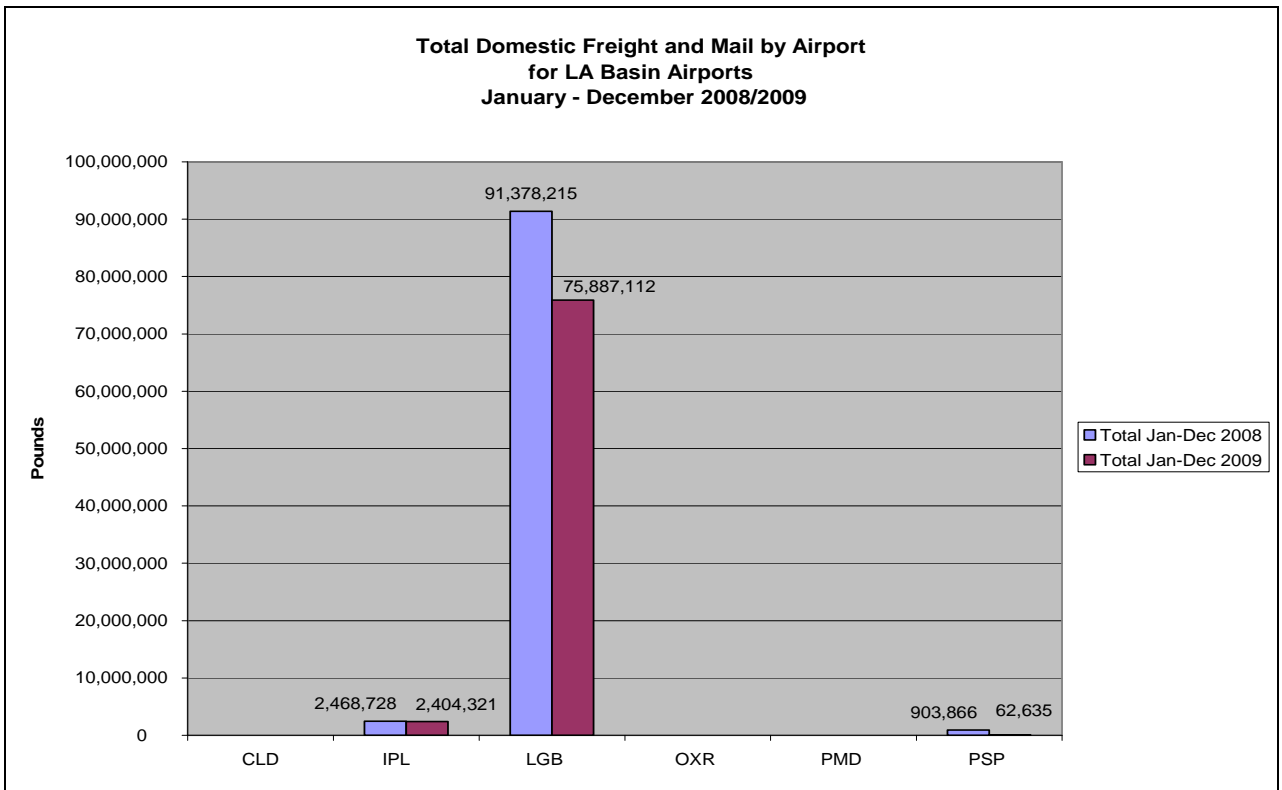
Based on DOT Traffic Data



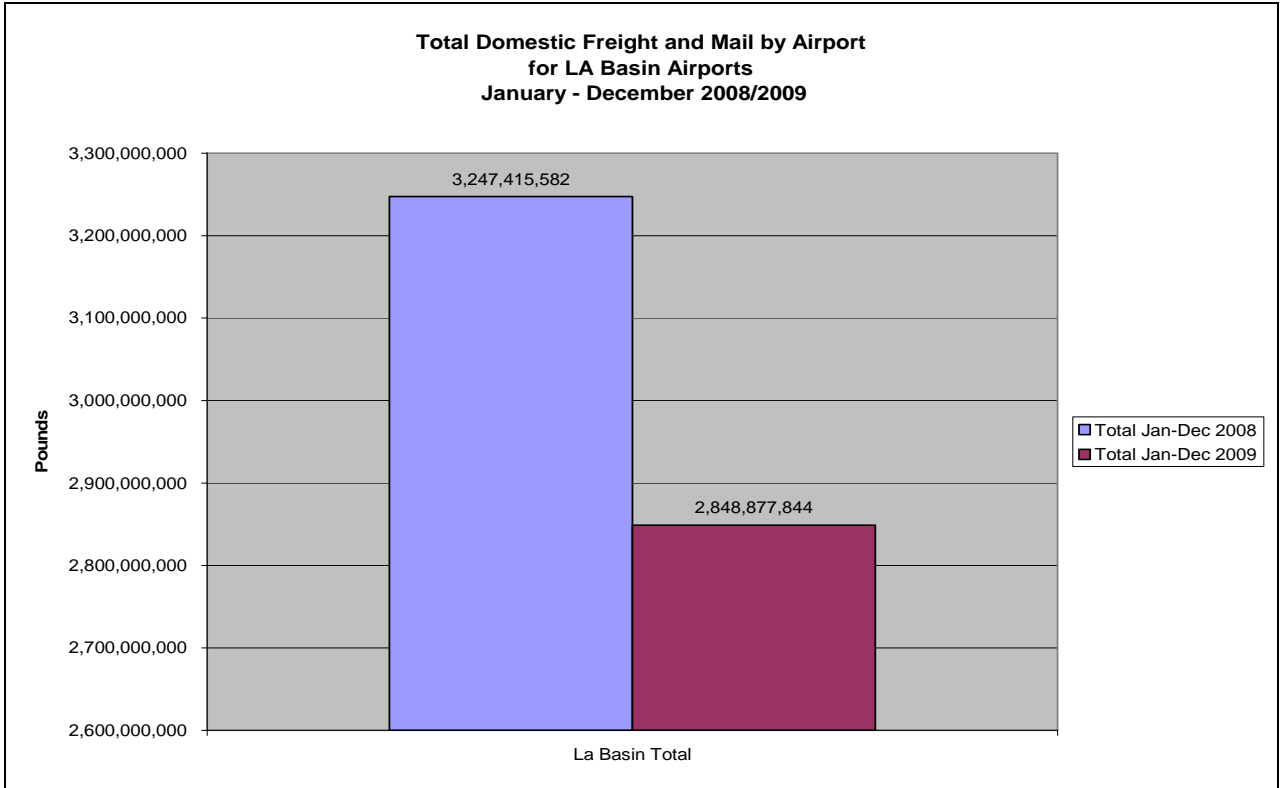
Based on DOT Traffic Data



Based on DOT Traffic Data



Based on DOT Traffic Data



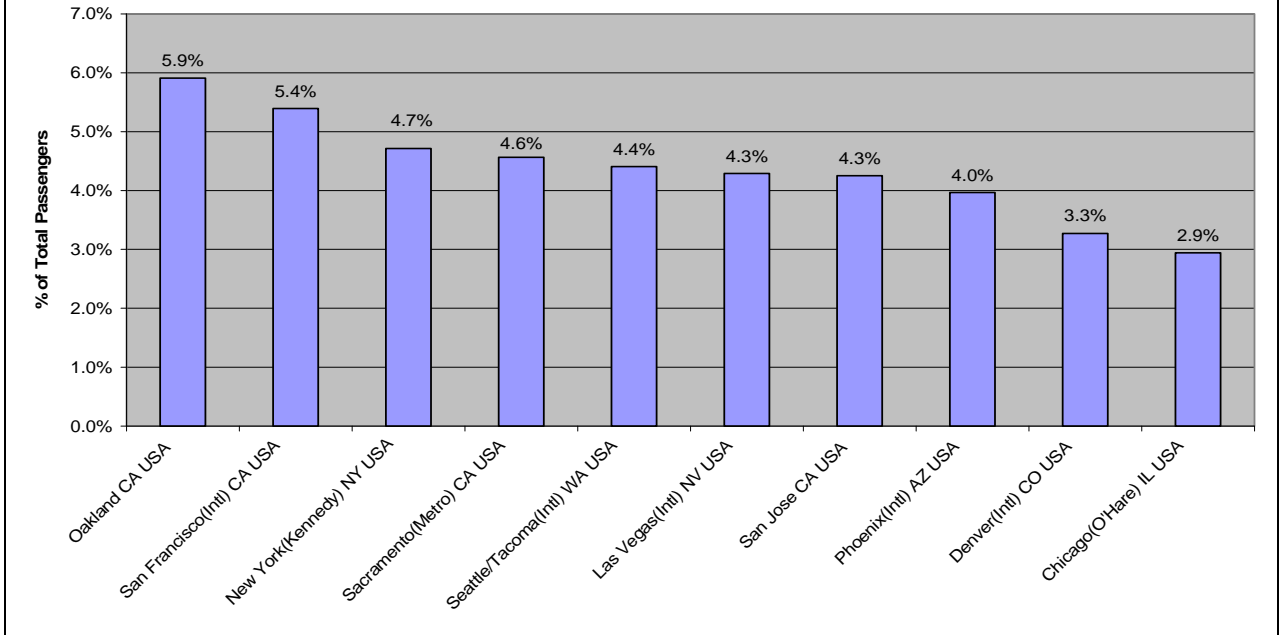
Based on DOT Traffic Data

Total Available Seats
by Departure Airport and Total LA Basin

Origin Airport	1st Quarter 2009	1st Quarter 2010
LAX	8,473,722	8,679,130
SAN	2,681,972	2,529,598
SNA	1,439,845	1,400,729
BUR	906,769	844,466
ONT	822,826	798,781
LGB	448,561	430,212
PSP	332,786	345,433
CLD	16,290	14,580
OXR	9,210	7,710
IPL	5,010	5,370
PMD	-	-
Total	15,136,991	15,056,009

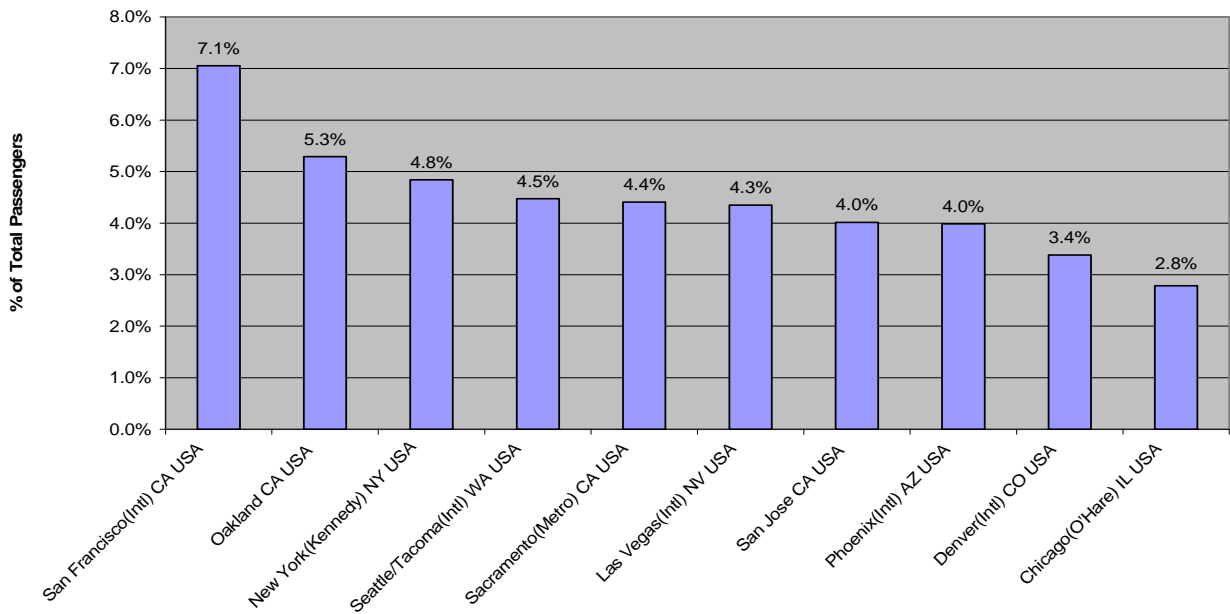
Based on Schedules Data

**Top 10 Domestic O&D Markets for LA Basin
4th Quarter 2008
(BUR CLD ONT IPL OXR LAX PSP LGB SNA SAN PMD)**



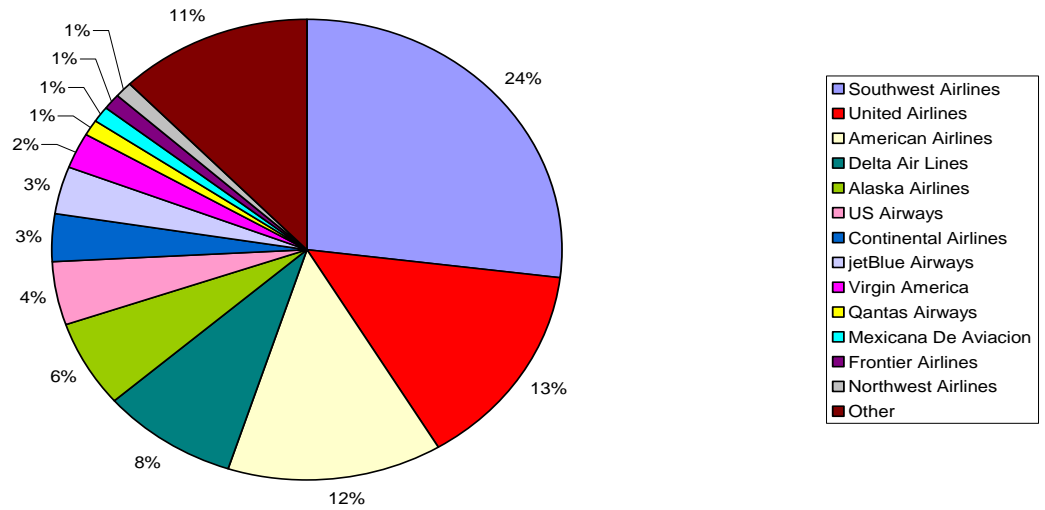
Based on DOT Traffic

**Top 10 Domestic O&D Markets for LA Basin
4th Quarter 2009
(BUR CLD ONT IPL OXR LAX PSP LGB SNA SAN PMD)**



Based on DOT Traffic

**Market Share by Departing Seats for LA Basin
1st Quarter 2010
(BUR CLD ONT IPL OXR LAX PSP LGB SAN SNA PMD)**



Based on Schedules Data

Domestic Load Factors by Airport and Total LA Basin
Narrow Body Aircraft

Origin Airport	Jan - Dec 2008	Jan - Dec 2009
BUR	66.46%	65.81%
LAX	77.17%	78.85%
LGB	78.32%	76.31%
ONT	70.33%	70.99%
PMD	42.00%	No Service
	<small>Allegiant Air Jan 08</small>	<small>Allegiant Air Stopped Reporting</small>
PSP	76.82%	75.95%
SAN	76.20%	78.45%
SNA	73.59%	73.10%
Total	75.17%	76.43%

Based on DOT Traffic Data

Domestic Load Factors by Airport and Total LA Basin
Regional and Turbo-Prop Aircraft

Origin Airport	Jan - Dec 2008	Jan - Dec 2009
BUR	78.09%	81.62%
CLD	48.12%	40.66%
IPL	40.42%	29.86%
LAX	70.20%	77.56%
LGB	74.18%	83.07%
ONT	73.37%	77.87%
OXR	41.88%	39.51%
PMD	33.56%	No Service <small>Skywest Stopped Reporting</small>
PSP	72.97%	76.06%
SAN	73.41%	81.47%
SNA	69.99%	77.29%
Total	71.00%	77.83%

Based on DOT Traffic Data

Domestic Load Factors by Airport and Total LA Basin
Widebody Aircraft

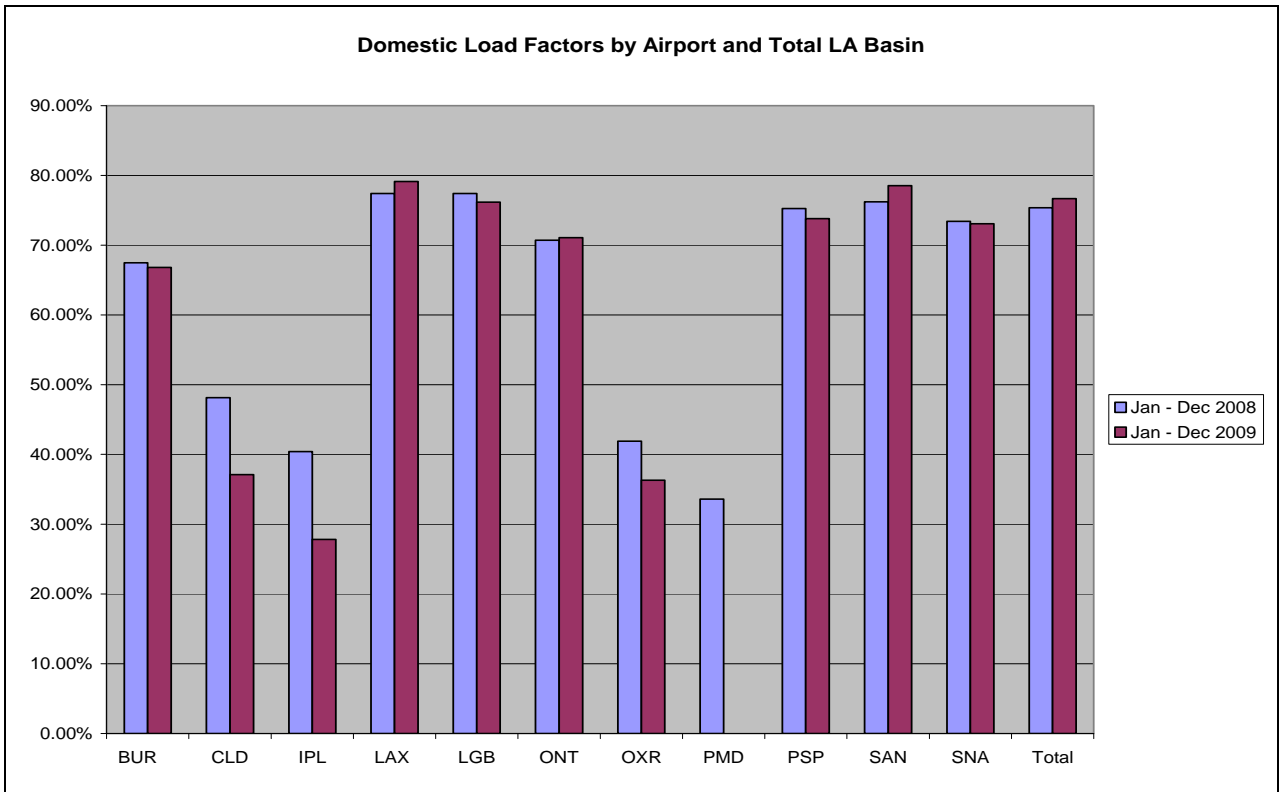
Origin Airport	Jan - Dec 2008	Jan - Dec 2009
BUR	14.22% <small>Pace Airline Flights in Aug08</small>	No Service
LAX	86.32%	95.70%
ONT	60.54%	87.05%
PSP	64.71% <small>Pace Airline Flights in Jan08</small>	No Service
SAN	84.45%	96.02%
Total	86.16%	95.72%

Based on DOT Traffic Data

Domestic Load Factors by Airport and Total LA Basin

Origin Airport	Jan - Dec 2008	Jan - Dec 2009
BUR	67.48%	66.81%
CLD	48.13%	37.11%
IPL	40.42%	27.83%
LAX	77.40%	79.12%
LGB	77.39%	76.16%
ONT	70.71%	71.08%
OXR	41.88%	36.32%
PMD	33.60%	No Service <small>Allegiant Air and Skywest Stopped Reporting</small>
PSP	75.27%	73.80%
SAN	76.20%	78.51%
SNA	73.40%	73.05%
Total	75.37%	76.67%

Based on DOT Traffic Data



Based on DOT Traffic Data

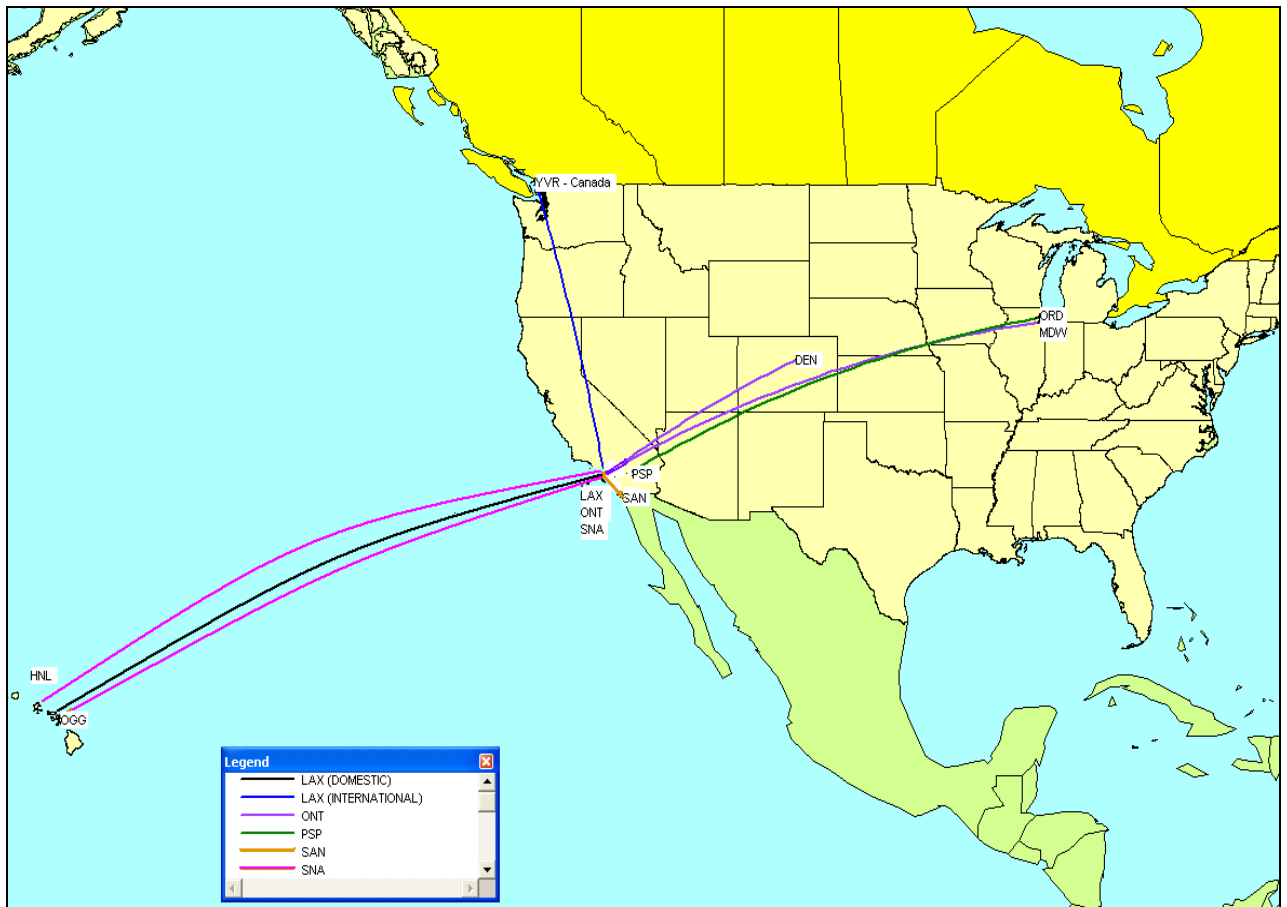
New Non-Stop Routes from LA Basin Airports
Comparing
4th Quarter 2009 to 1st Quarter 2010

Origin Airport	Destination Airport	Operating Carrier
LAX	Kahului Maui HI USA	Continental Airlines
LAX	San Diego(Intl) CA USA	SkyWest Airlines
LAX	Vancouver(Intl) BC Canada	WestJet
ONT	Denver(Intl) CO USA	Southwest Airlines
ONT	Chicago(Midway) IL USA	Southwest Airlines
PSP	Chicago(O'Hare) IL USA	United Airlines
SAN	Los Angeles(Intl) CA USA	SkyWest Airlines
SNA	Honolulu Oahu HI USA	Continental Airlines
SNA	Kahului Maui HI USA	Continental Airlines

Based on Schedules Data

- New Routes for Delta (identified as Delta/Northwest merger) not included

New Non-Stop Routes from LA Basin Airports Comparing 4th Quarter 2009 to 1st Quarter 2010



Lost Non-Stop Routes from LA Basin Airports
Comparing
4th Quarter 2009 to 1st Quarter 2010

Origin Airport	Destination Airport	Operating Carrier
LAX	Detroit(Metro Wayne) MI USA	Spirit Airlines
LAX	Dusseldorf(Intl) Germany	LTU International Airways
LAX	McAllen TX USA	Allegiant Air
LAX	Milwaukee WI USA	Republic Airline
LAX	Prescott AZ USA	Horizon Air
LGB	Seattle/Tacoma(Intl) WA USA	Alaska Airlines
SAN	Atlanta(Intl) GA USA	AirTran Airways
SAN	Boston(Intl) MA USA	American Airlines
SAN	Salt Lake City UT USA	jetBlue Airways
SAN	St. Louis(Intl) MO USA	American Airlines
SNA	Las Vegas(Intl) NV USA	US Airways
SNA	San Francisco(Intl) CA USA	American Eagle
SNA	San Jose CA USA	American Eagle

Based on Schedules Data

Changes in Aircraft Type at LA Basin Airports
Comparing
4th Quarter 2009 to 1st Quarter 2010

Airport	New Aircraft	Lost Aircraft
LAX	AIRBUS INDUSTRIE A330-200	
LAX	AIRBUS INDUSTRIE A318/319/320/321	
LAX	CANADAIR REGIONAL JET 705	
LGB	BOEING 737-400	
LGB	BOEING 737-700	
ONT	AIRBUS INDUSTRIE A318/319/320/321	
ONT		BOEING (DOUGLAS) MD-83
PSP	BOEING 737-600	
PSP	BOEING 737-800	
PSP		DE HAVILLAND DHC8 DASH 8
SAN	BOEING 767	
SAN	AIRBUS INDUSTRIE A318/319/320/321	
SAN	CANADAIR REGIONAL JET 705	
SNA	AIRBUS INDUSTRIE A321	
SNA	AIRBUS INDUSTRIE A318/319/320/321	
SNA	EMBRAER RJ140	

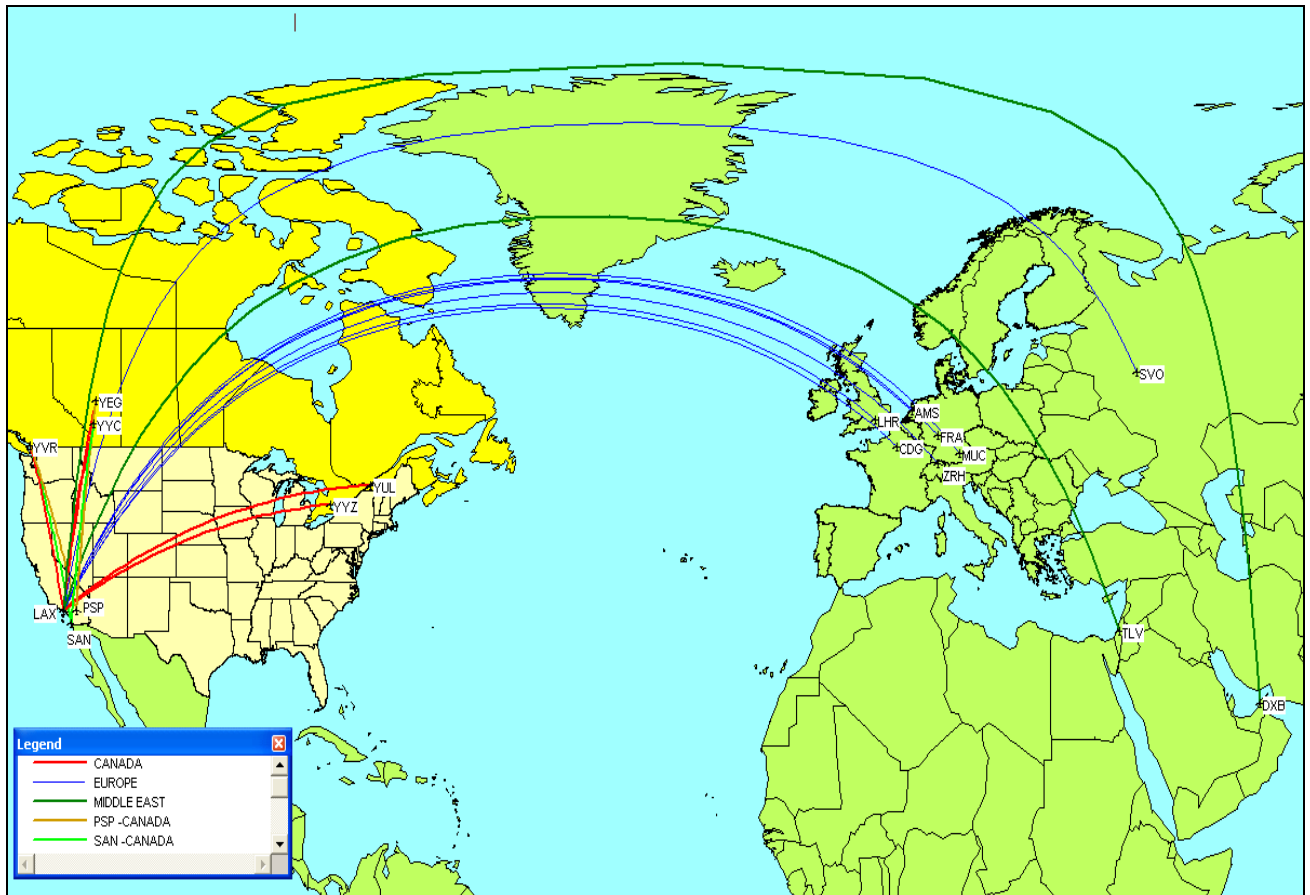
Based on Schedules Data

Changes in Airlines at LA Basin Airports
Comparing
4th Quarter 2009 to 1st Quarter 2010

Airport	New Airline	Lost Airline
LAX		LTU International Airways
LAX		Air Canada Jazz
LAX		Republic Airline
LGB		Alaska Airlines
PSP	Delta Air Lines	
SAN		AirTran Airways
SAN		Air Canada Jazz

Based on Schedules Data

International Routes from LA Basin Airports (Canada, Europe and Middle East Regions) 1st Quarter 2010



International Routes from LA Basin Airports (Caribbean, Central and South American Regions) 1st Quarter 2010



International Routes from LA Basin Airports (Asia and Pacific Rim Regions) 1st Quarter 2010

