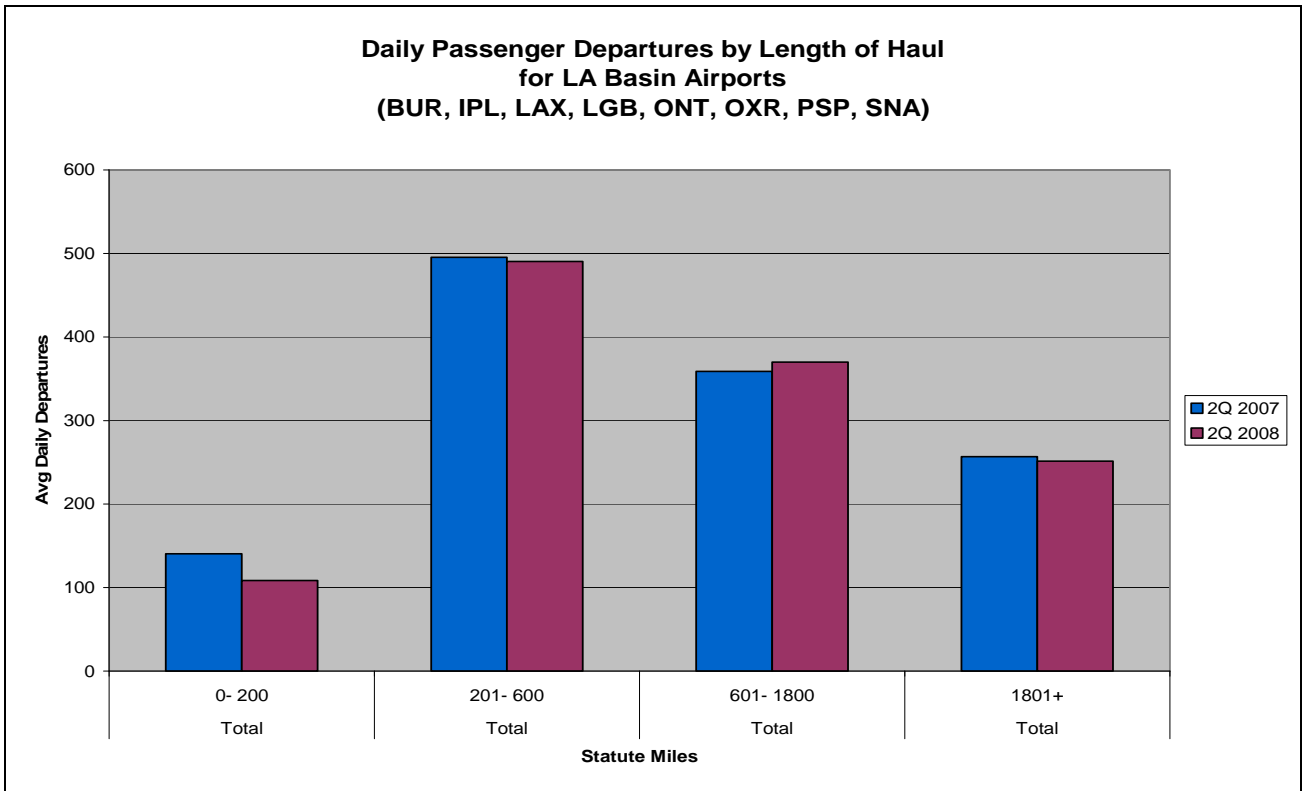


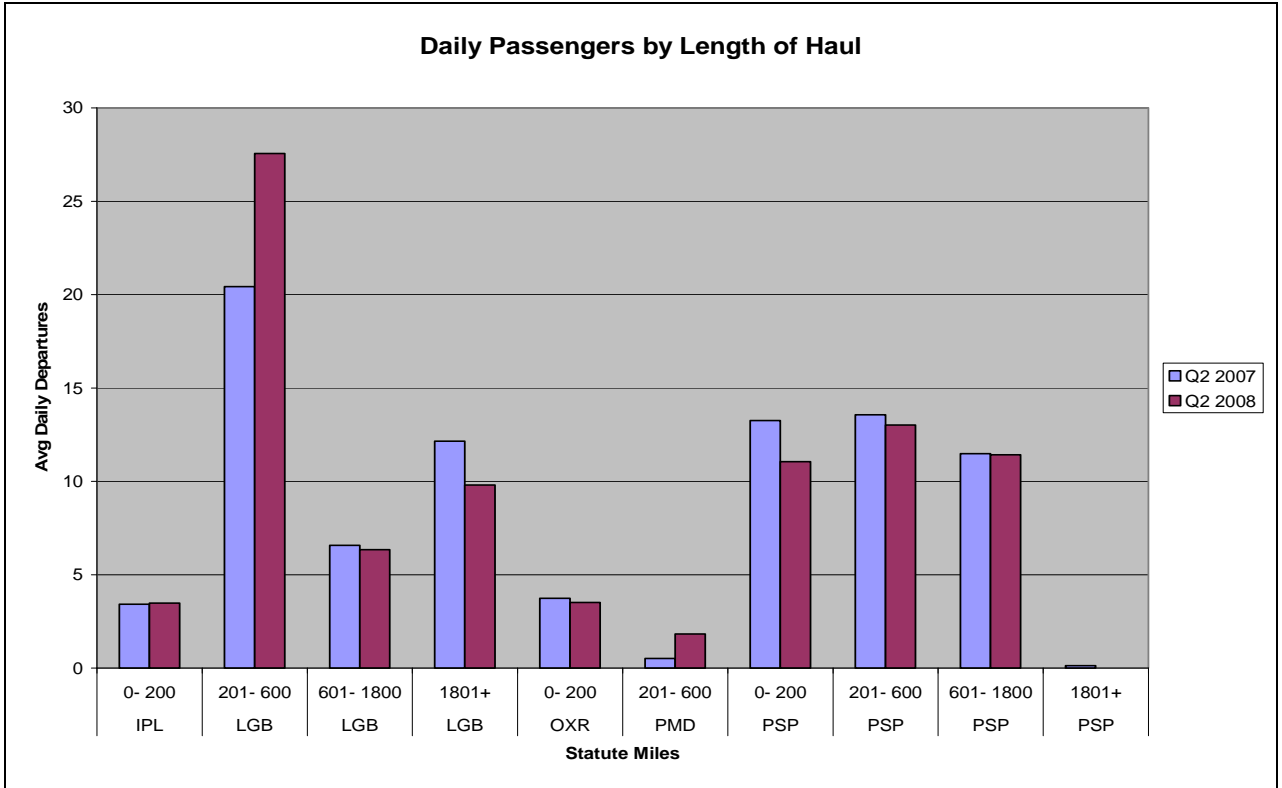
Quarterly Reports for  
Southern California Association of  
Governments (SCAG)

Produced by  
BACK Aviation Solutions

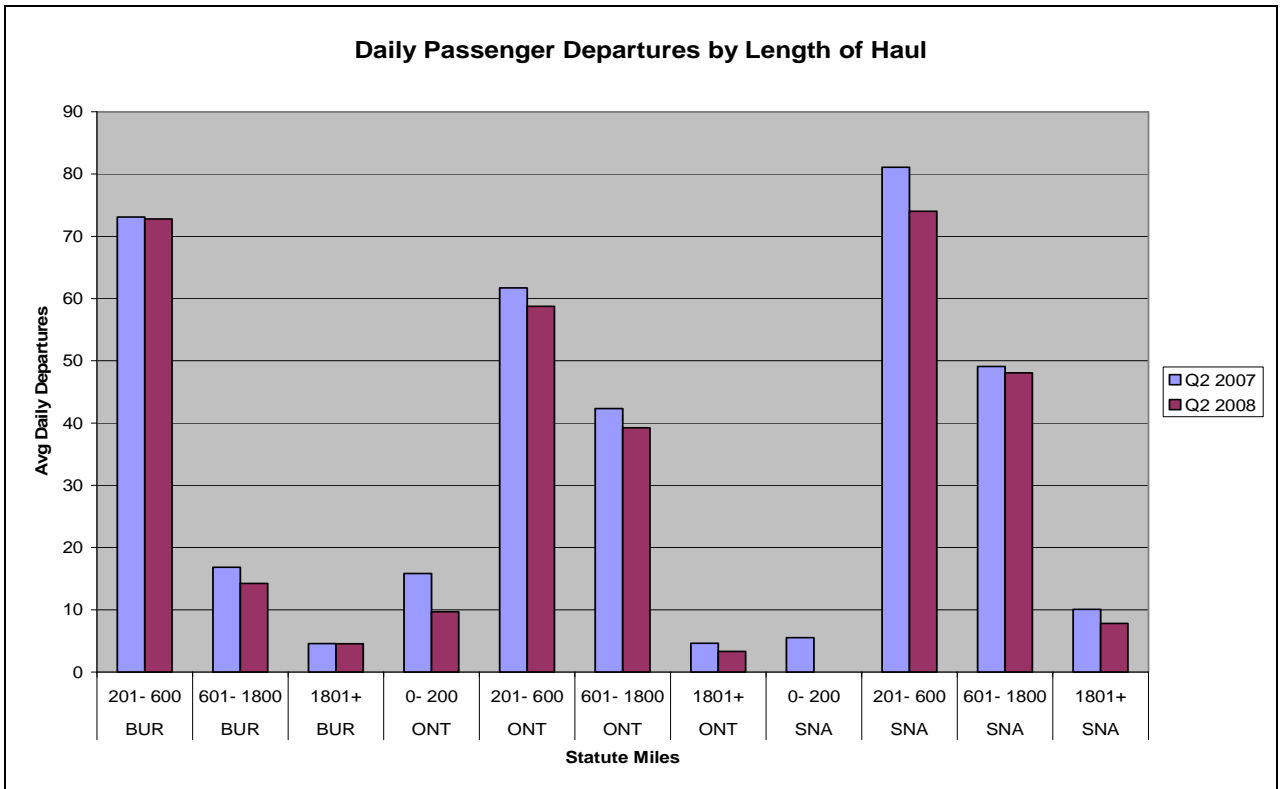


**Based on Schedules Data**

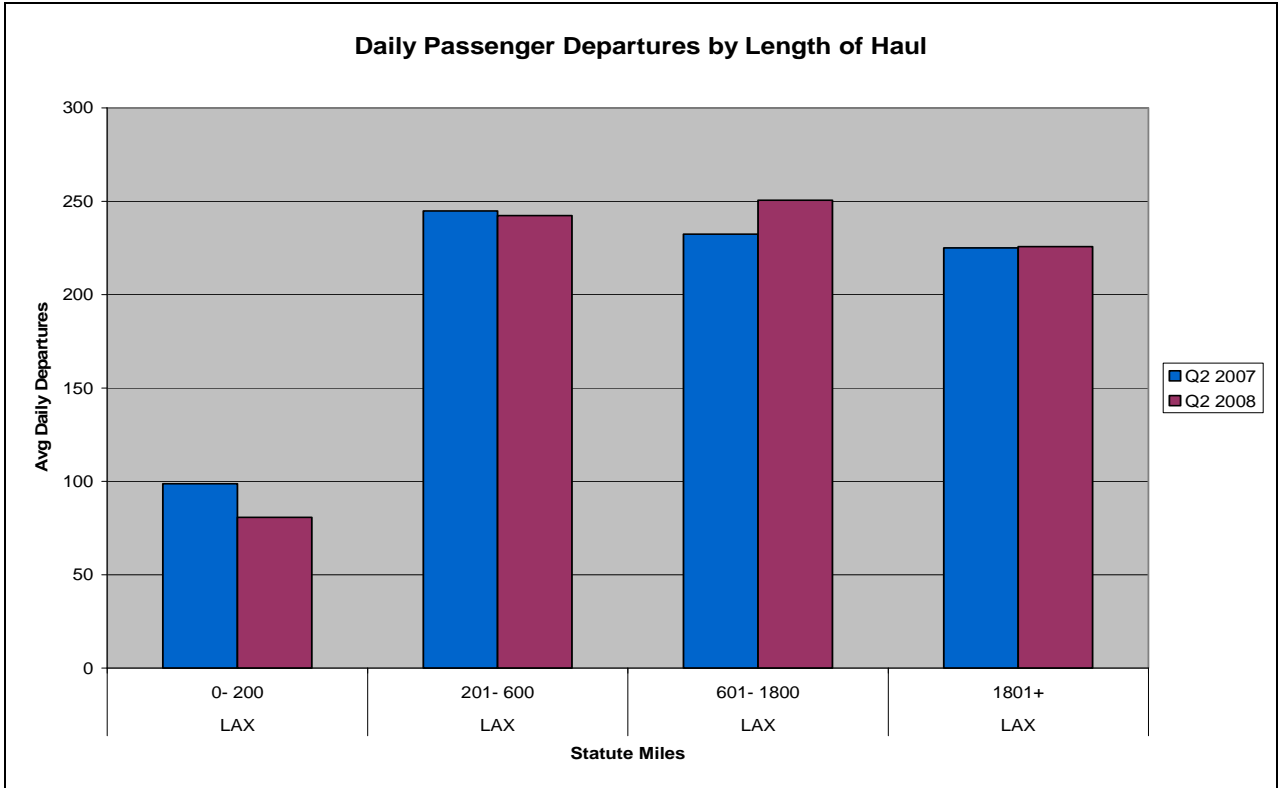
- BUR**- Burbank
- IPL** - El Centro/Imperial
- LAX** - Los Angeles (INTL)
- LGB** - Long Beach
- ONT** - Ontario
- OXR** - Oxnard/Ventura
- PMD** -Palmdale/Lancaster
- PSP**- Palm Springs
- SNA** - Santa Ana (J. Wayne)



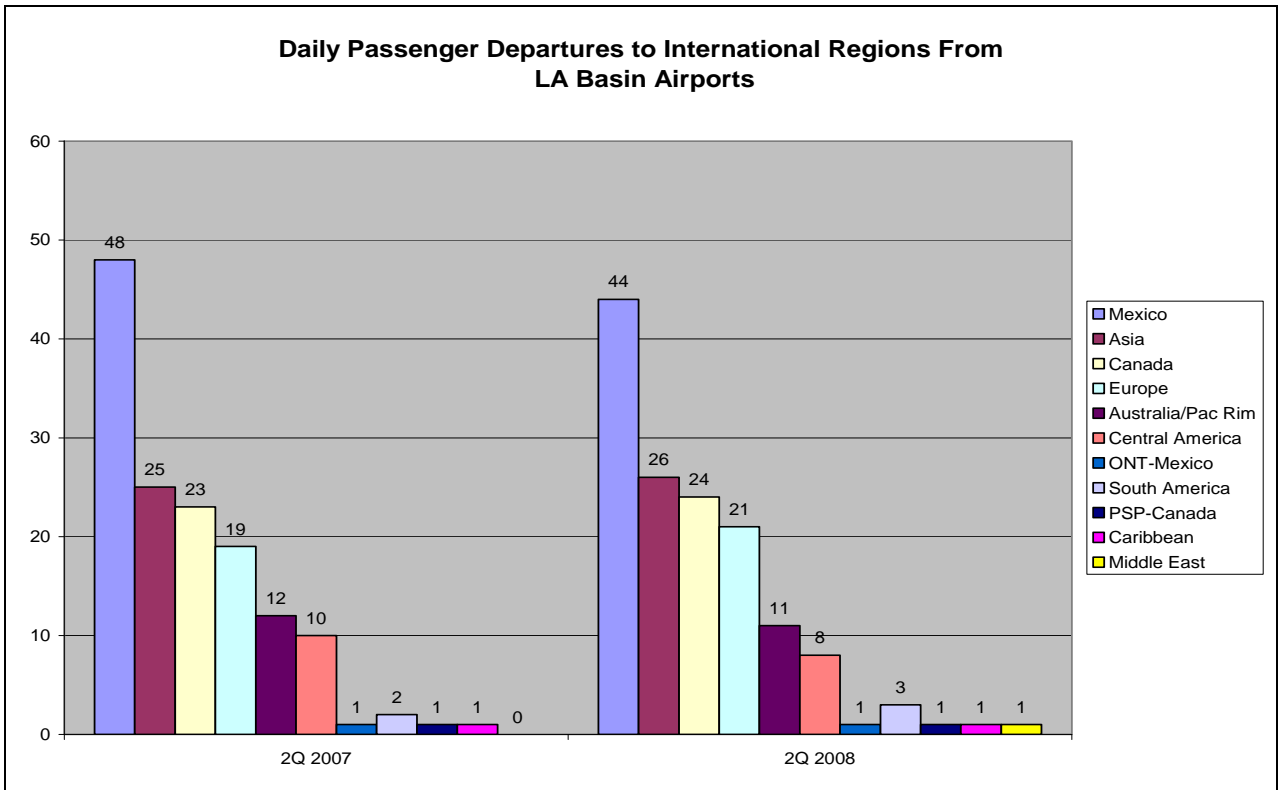
Based on Schedules Data



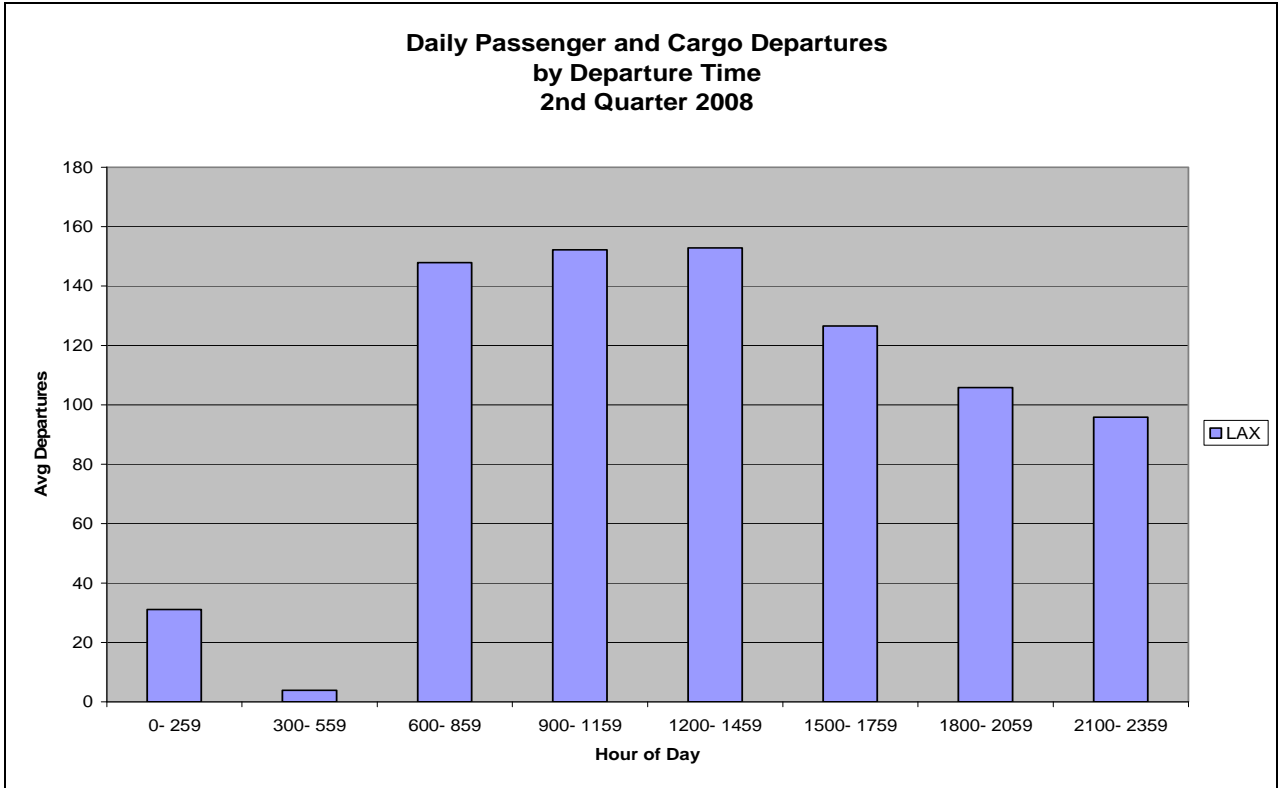
Based on Schedules Data



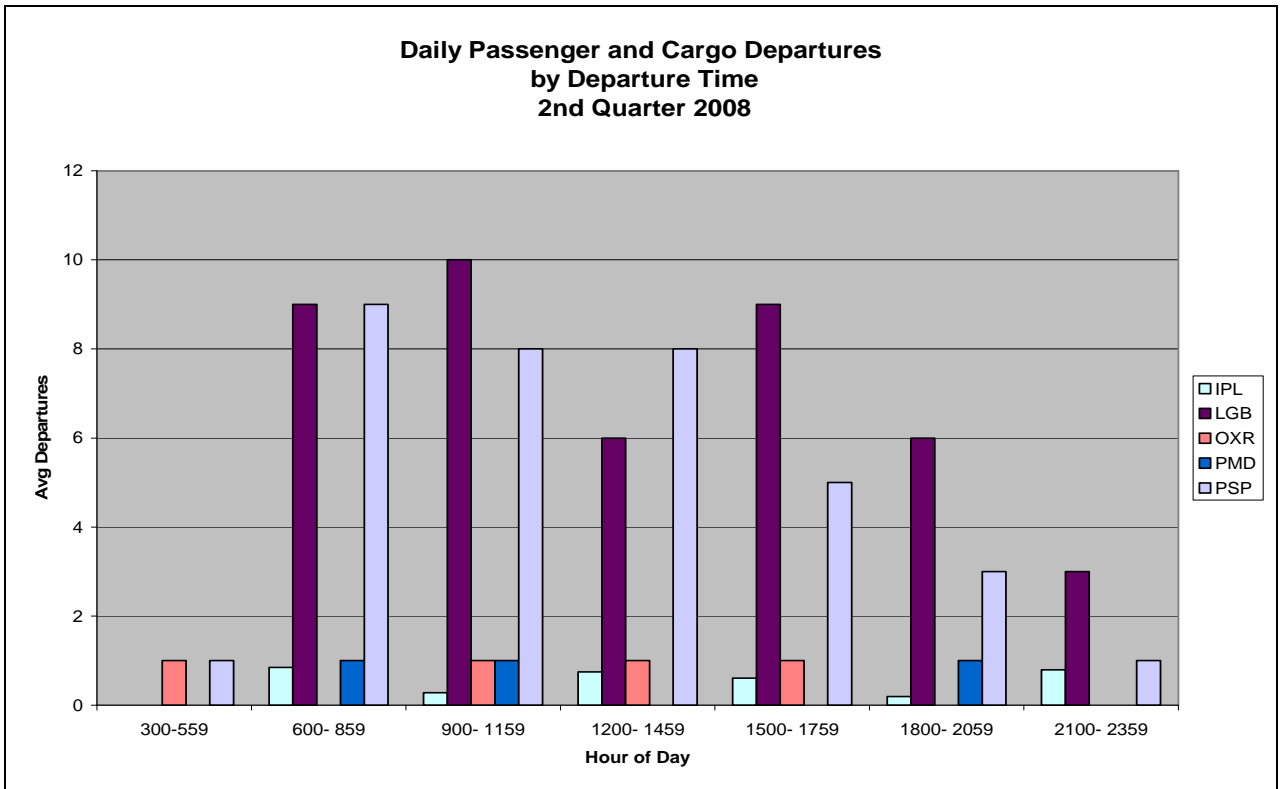
Based on Schedules Data



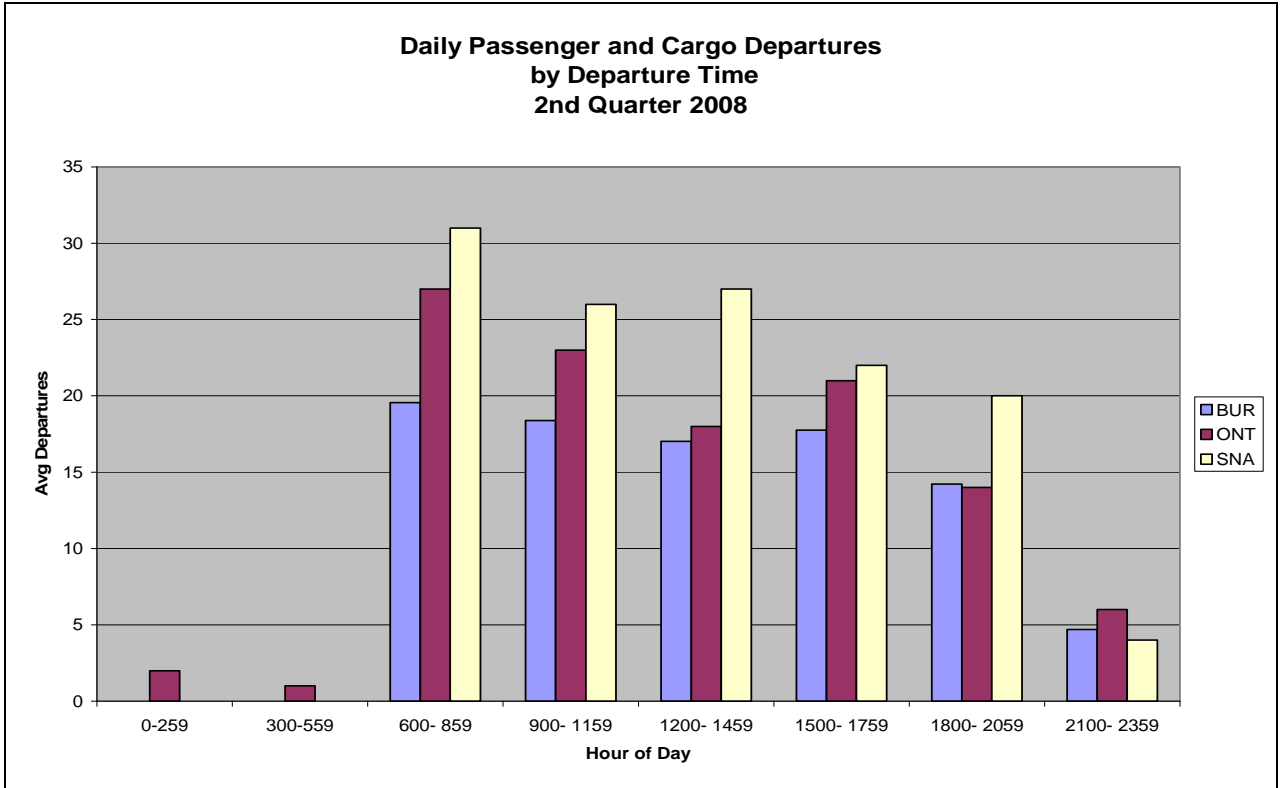
Based on Schedules Data



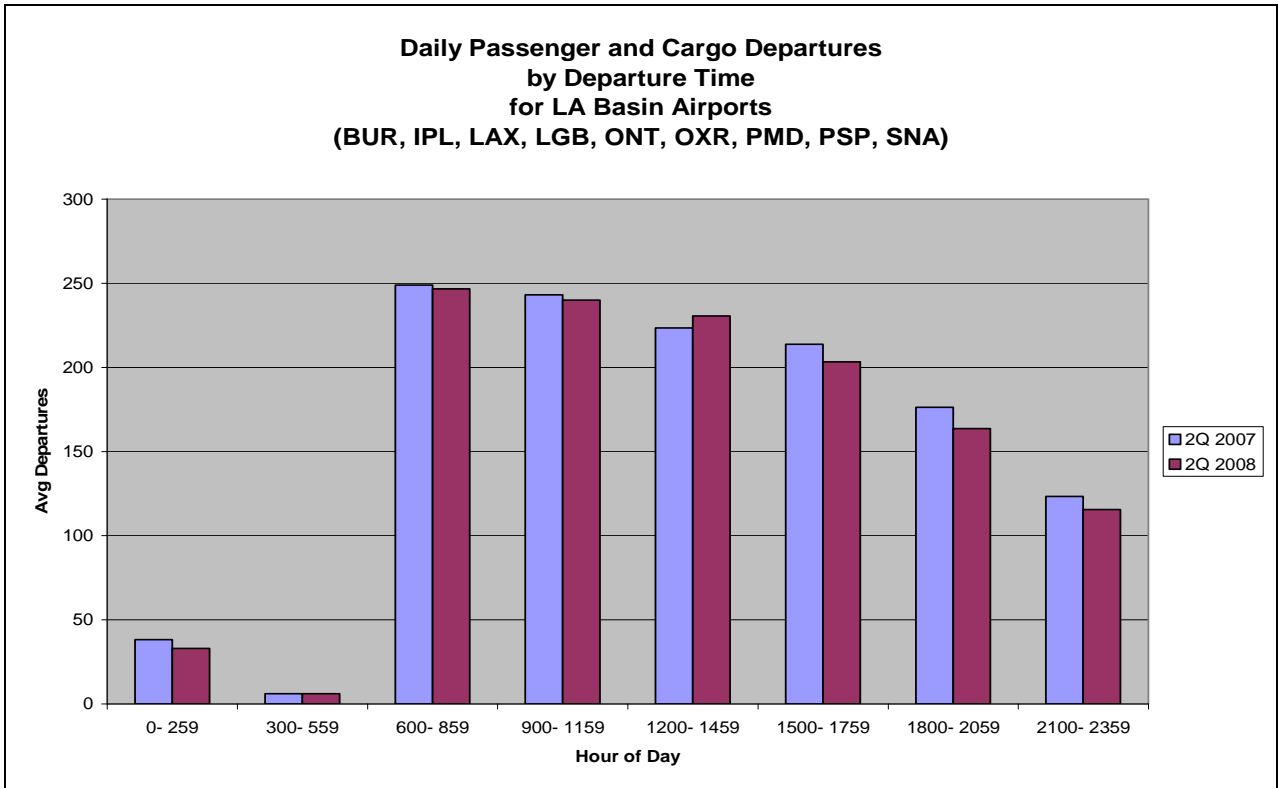
Based on Schedules Data



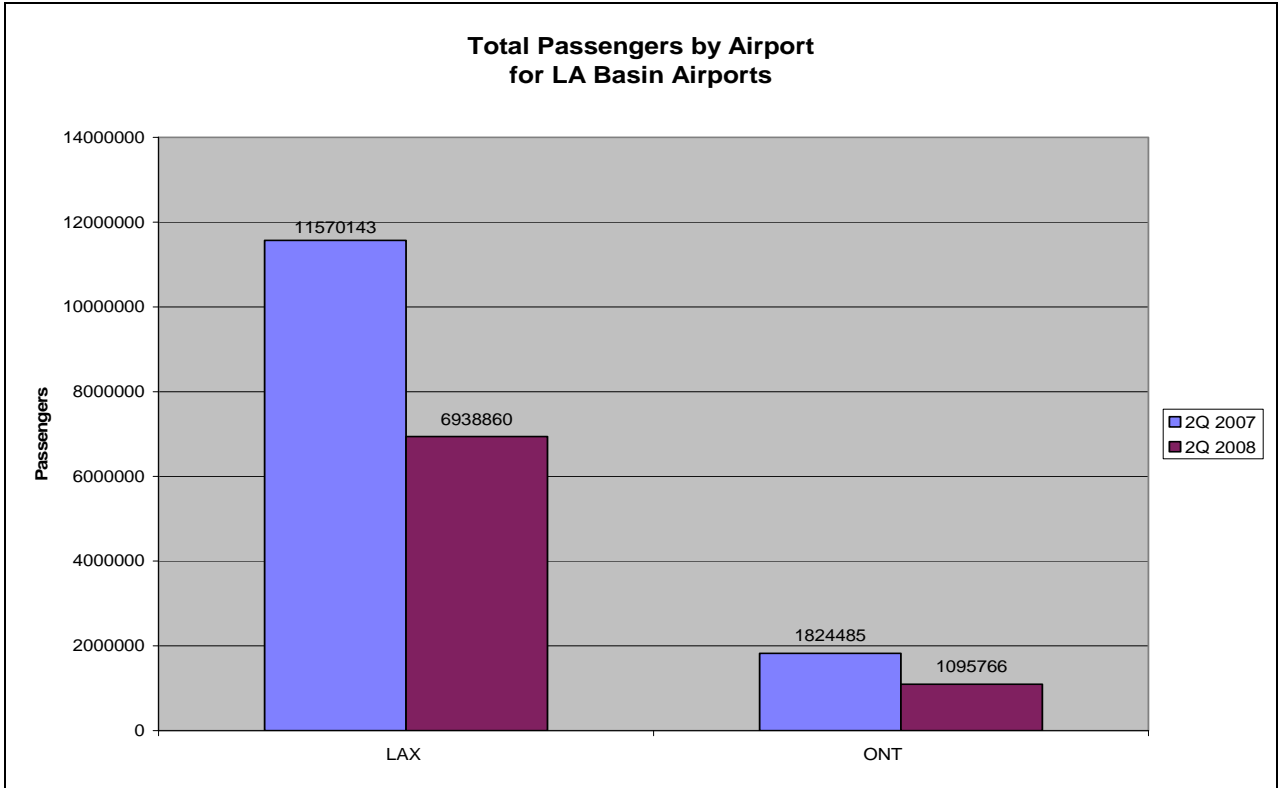
Based on Schedules Data



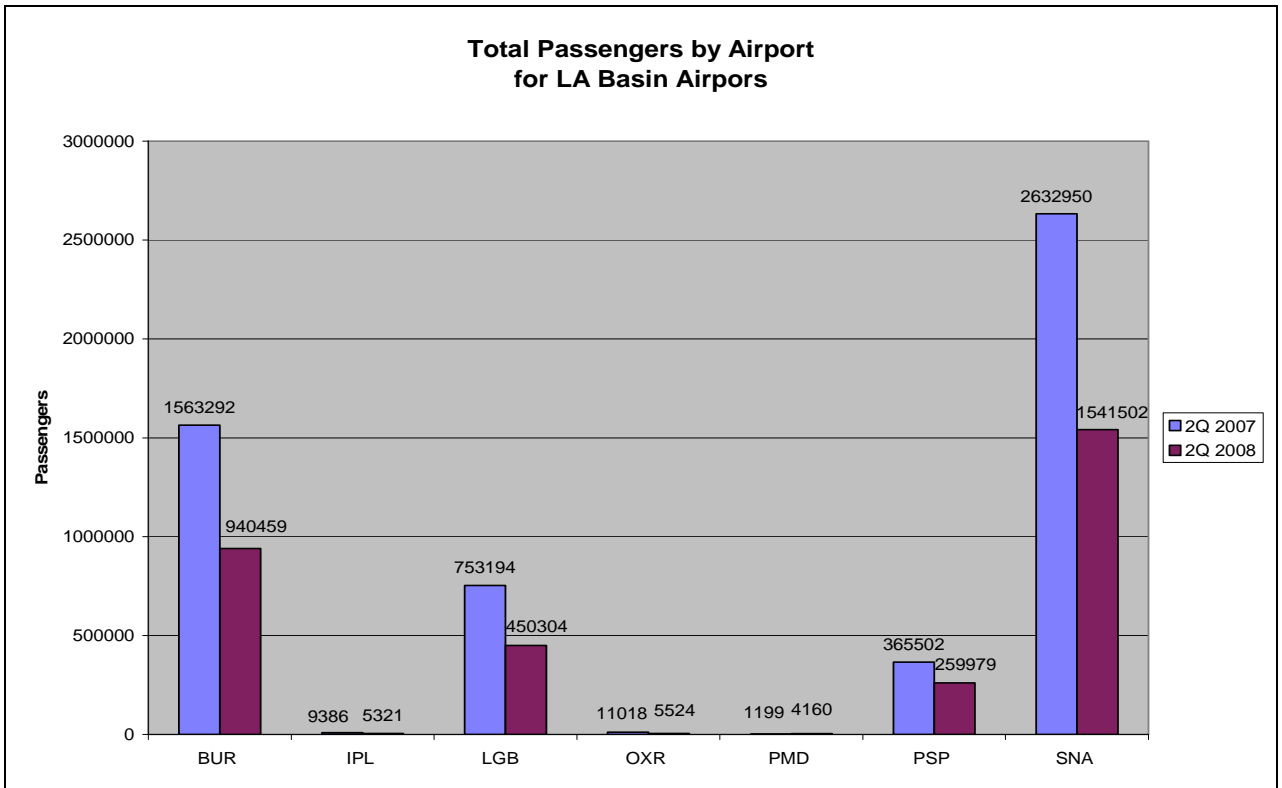
Based on Schedules Data



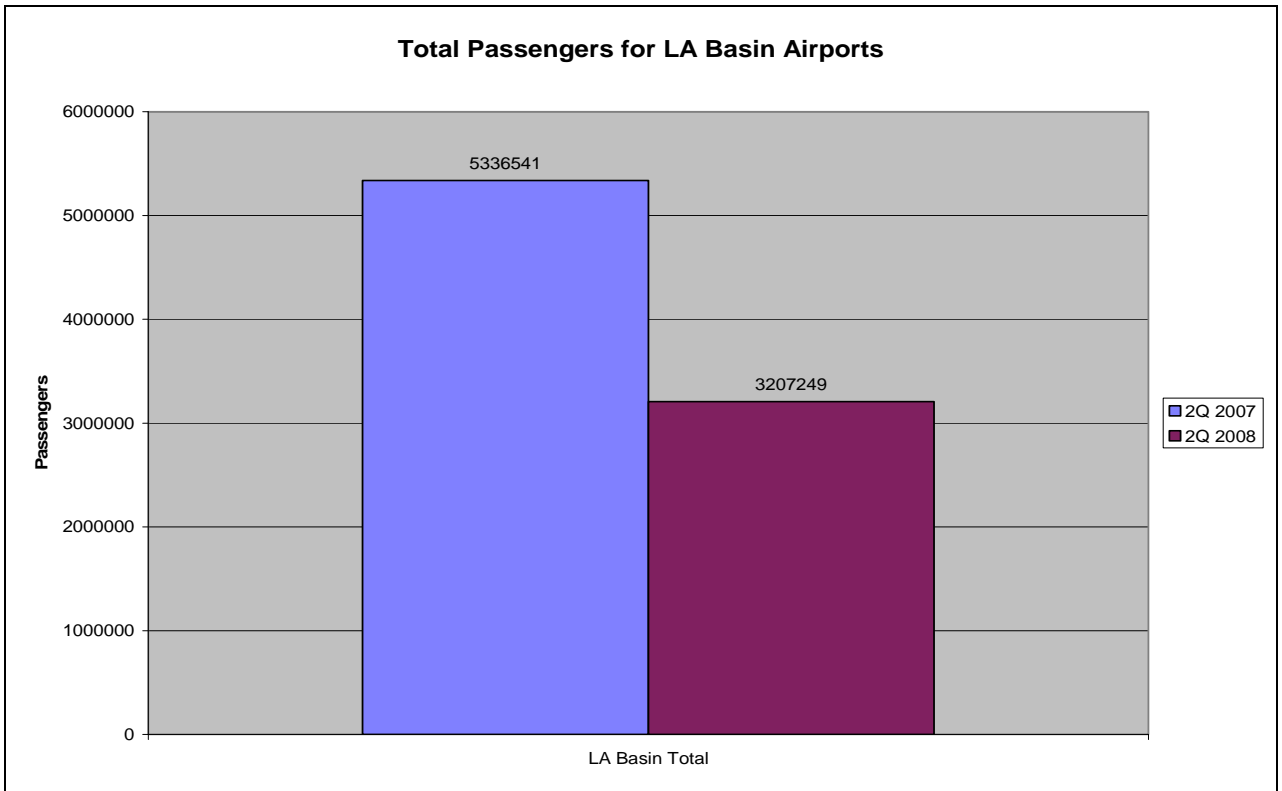
Based on Schedules Data



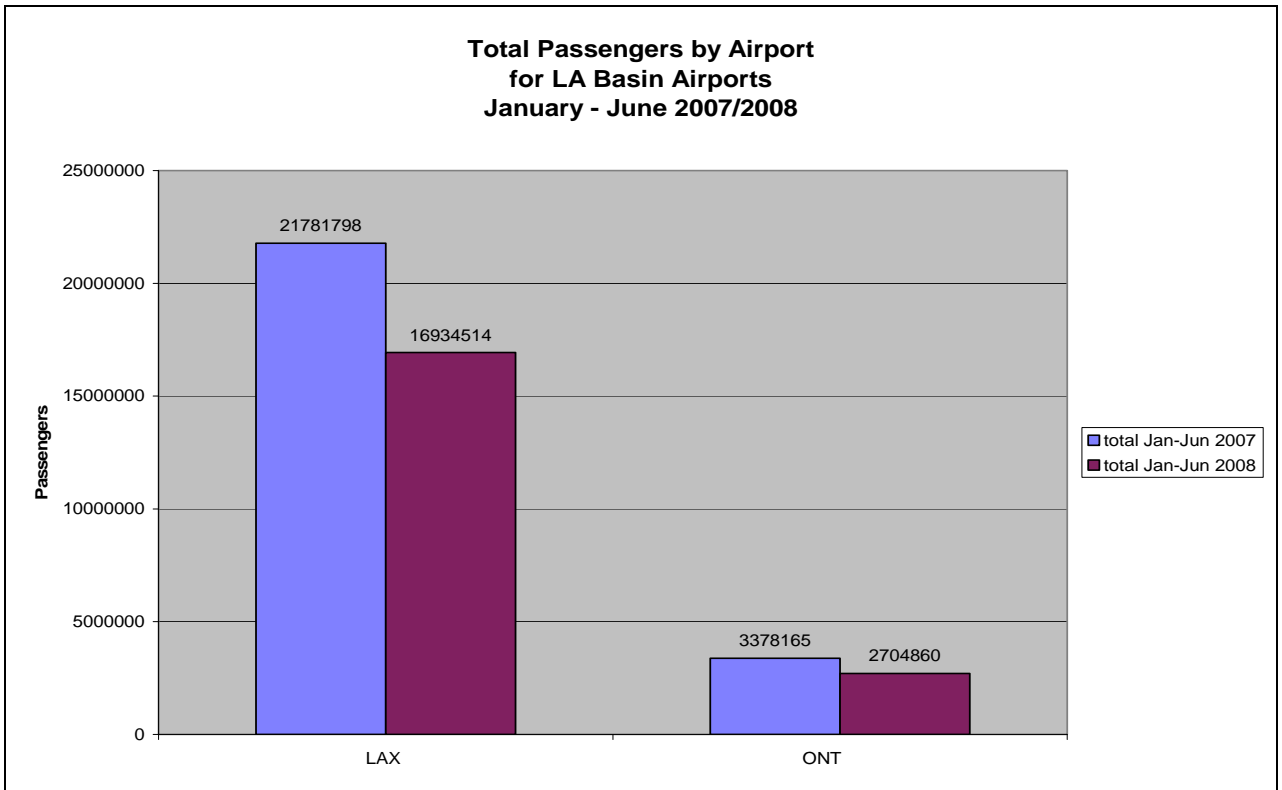
Based on DOT Traffic Data



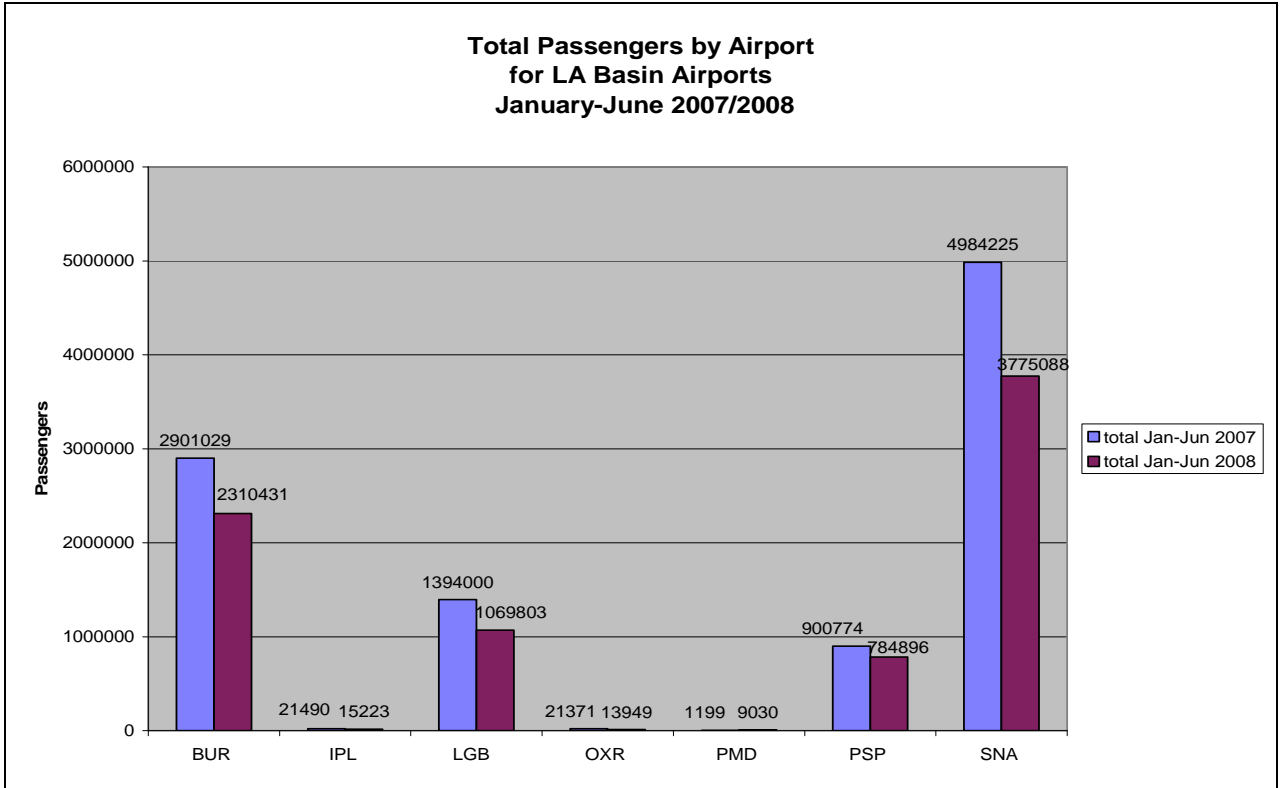
Based on DOT Traffic Data



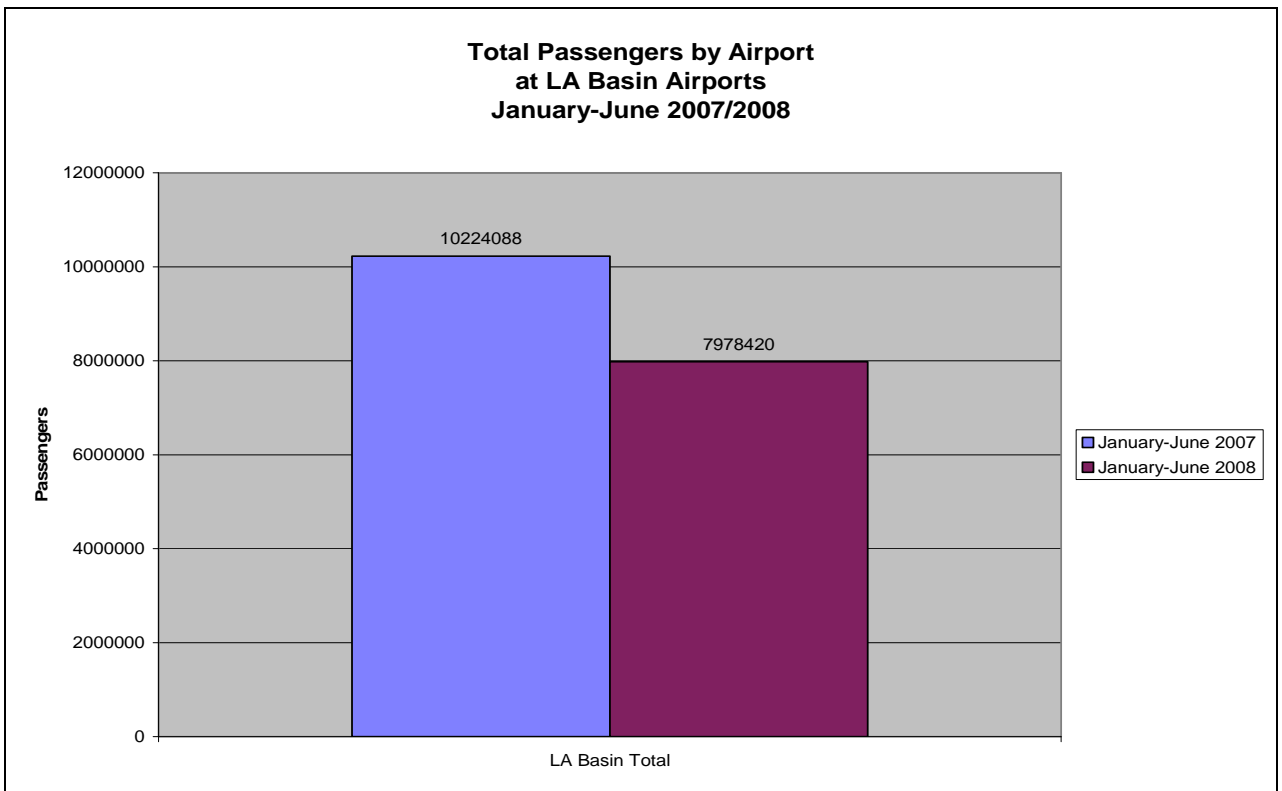
**Based on DOT Traffic Data**



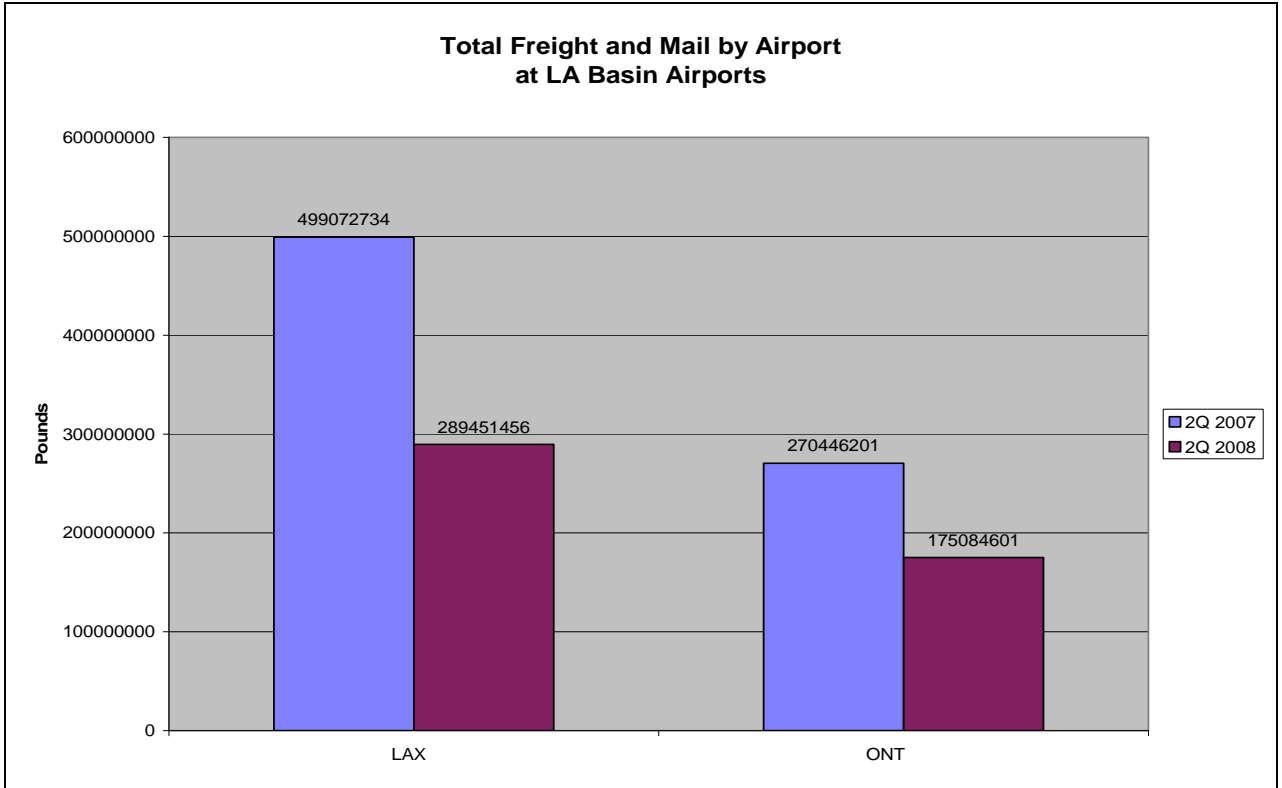
**Based on DOT Traffic Data**



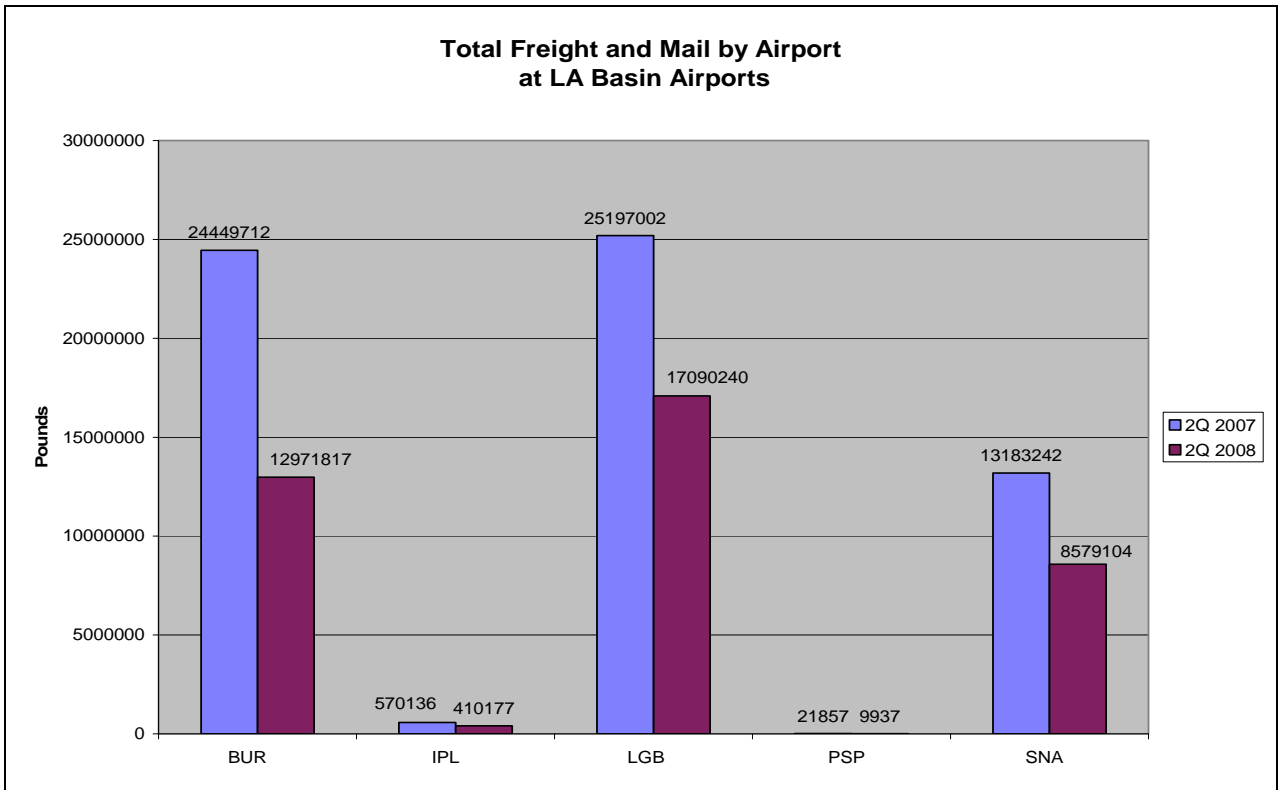
**Based on DOT Traffic Data**



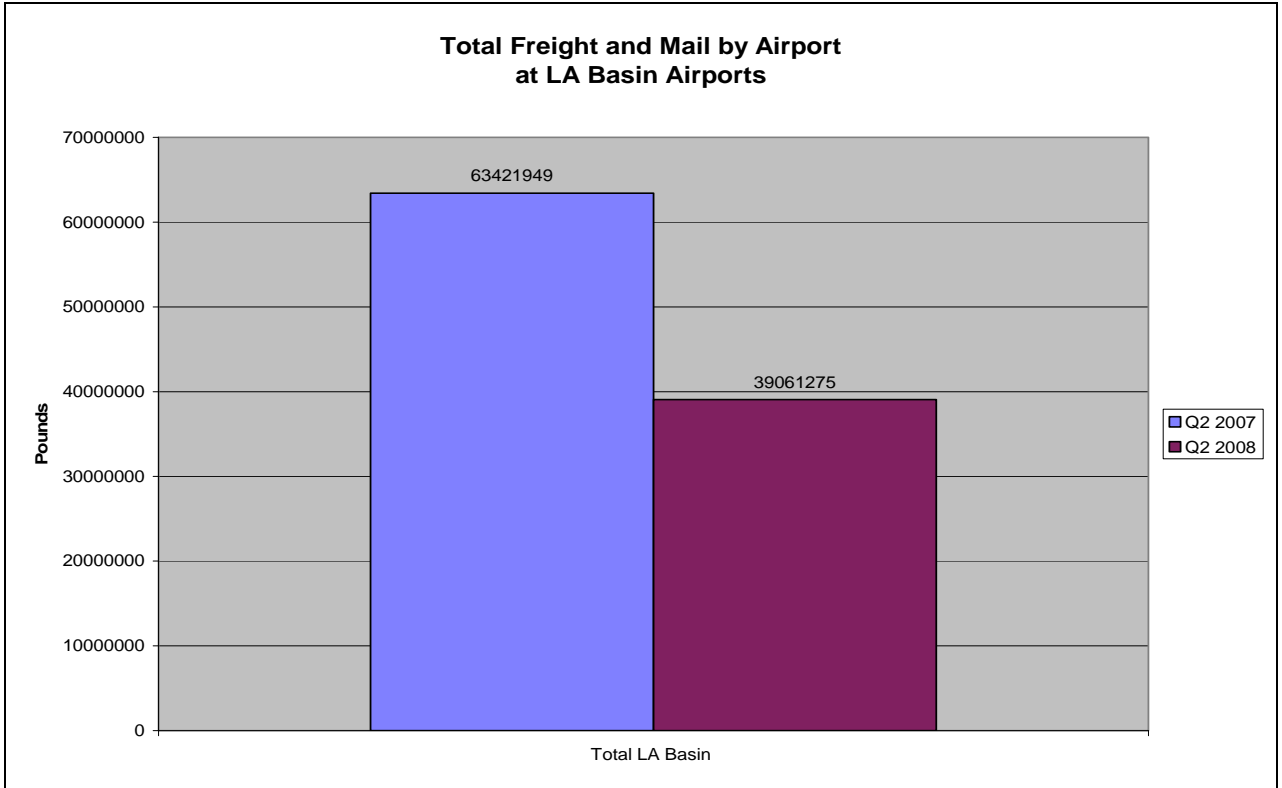
**Based on DOT Traffic Data**



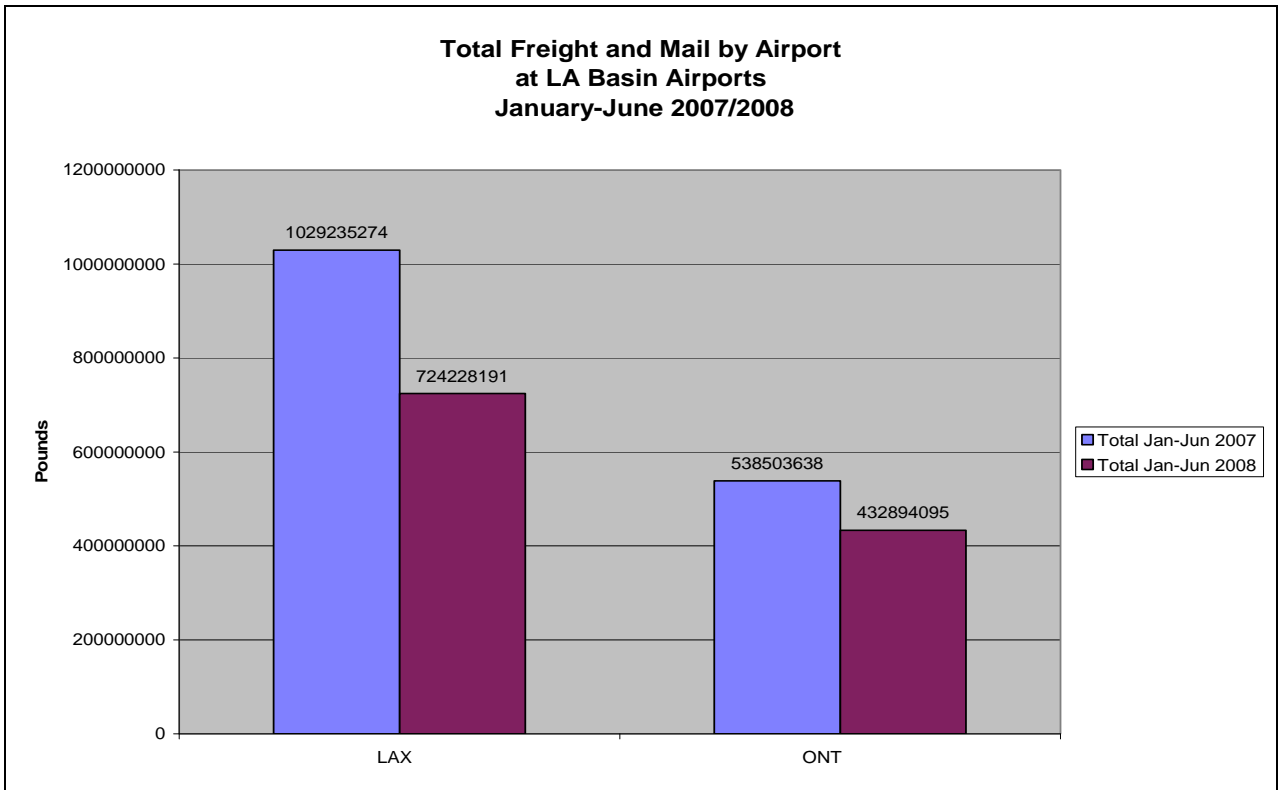
Based on DOT Traffic Data



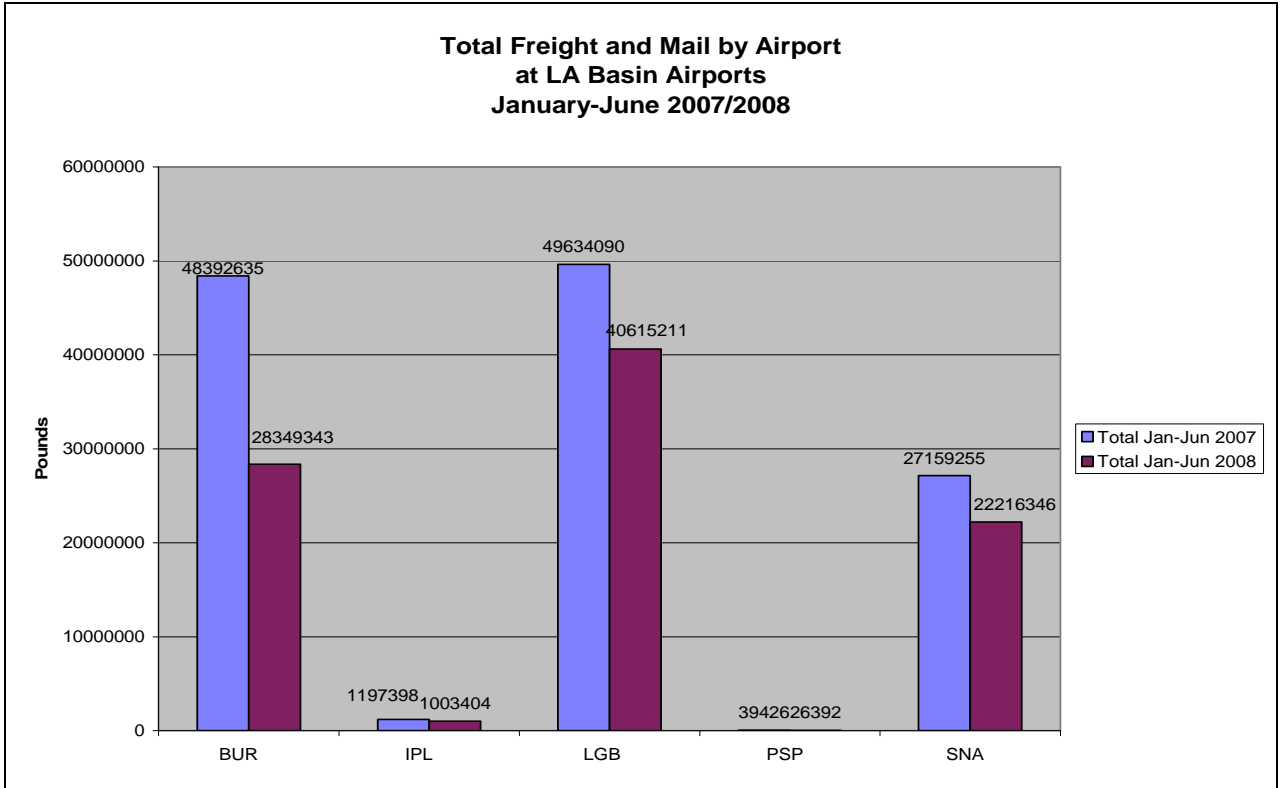
Based on DOT Traffic Data



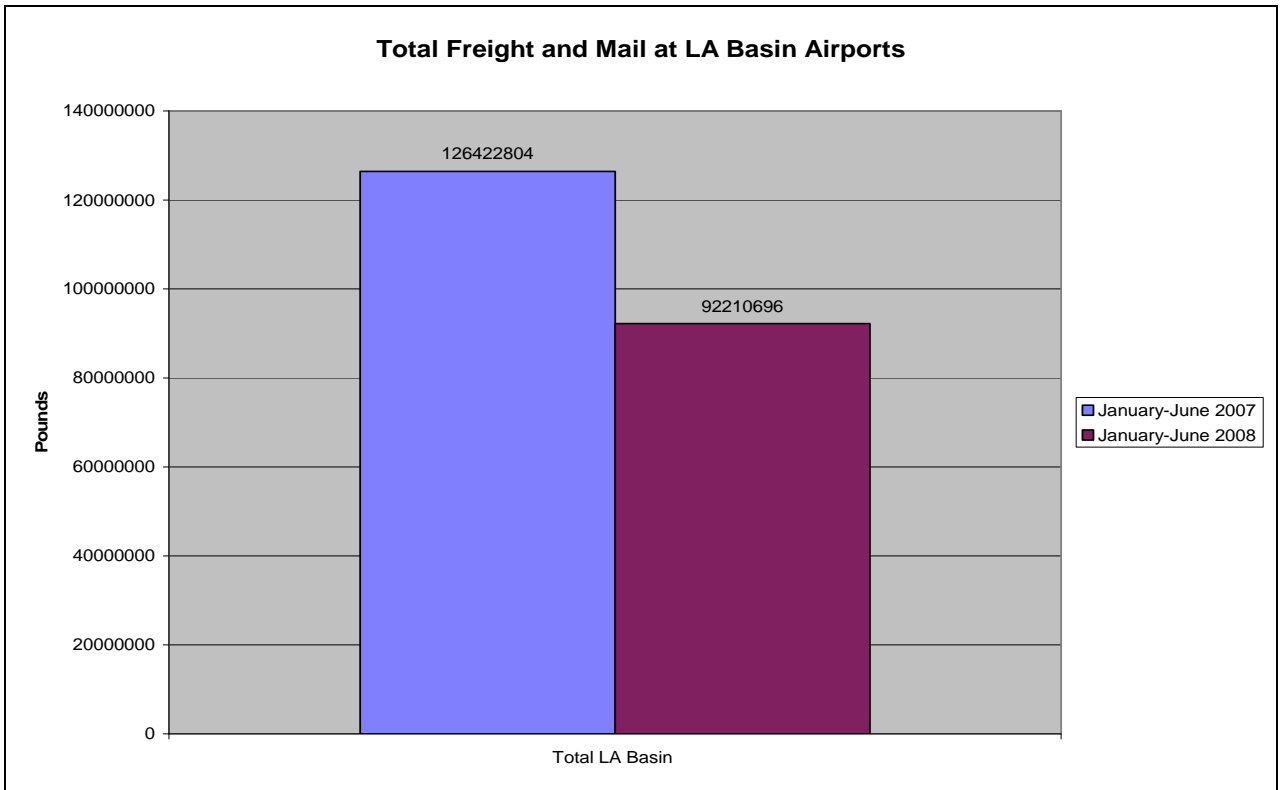
Based on DOT Traffic Data



Based on DOT Traffic Data



**Based on DOT Traffic Data**



**Based on DOT Traffic Data**

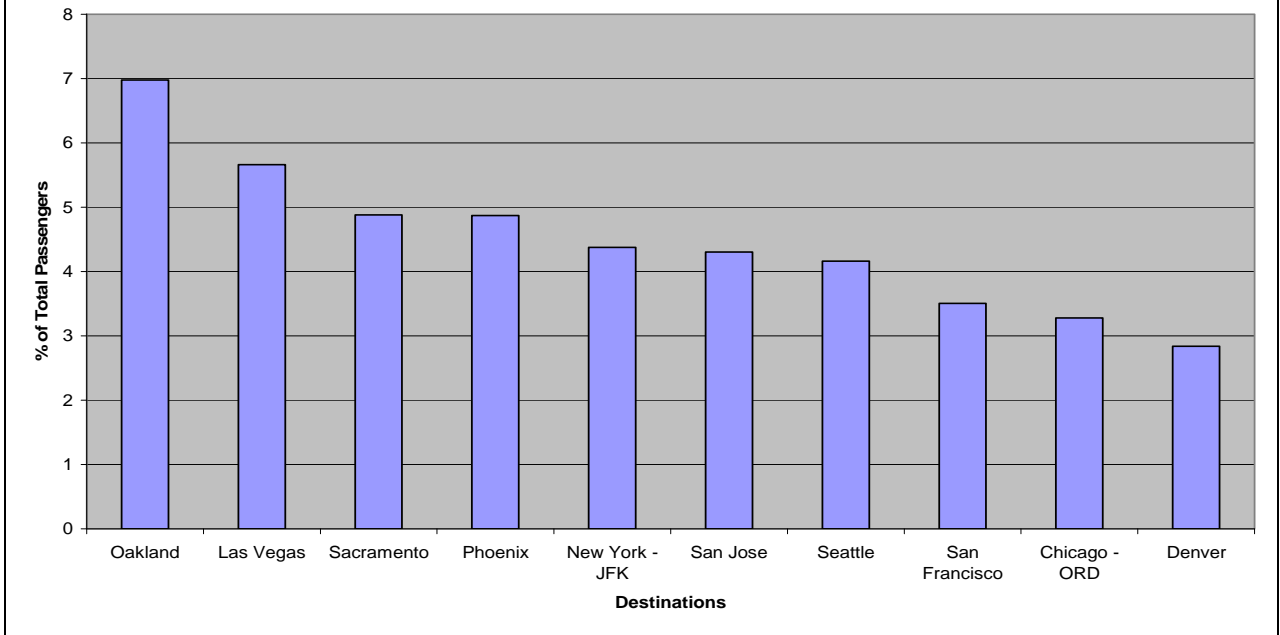
## Total Available Seats by Airport and Total LA Basin

	2nd Quarter 2007	2nd Quarter 2008
BUR	1,067,387	1,038,260
IPL	9,420	9,600
LAX	9,913,300	9,868,125
LGB	469,920	467,326
ONT	1,282,037	1,146,203
OXR	10,320	9,690
PMD	2,400	8,400
PSP	243,559	238,324
SNA	1,698,345	1,577,861
<b>Total</b>	<b>14,696,688</b>	<b>14,363,789</b>

**Based on Schedules Data done**

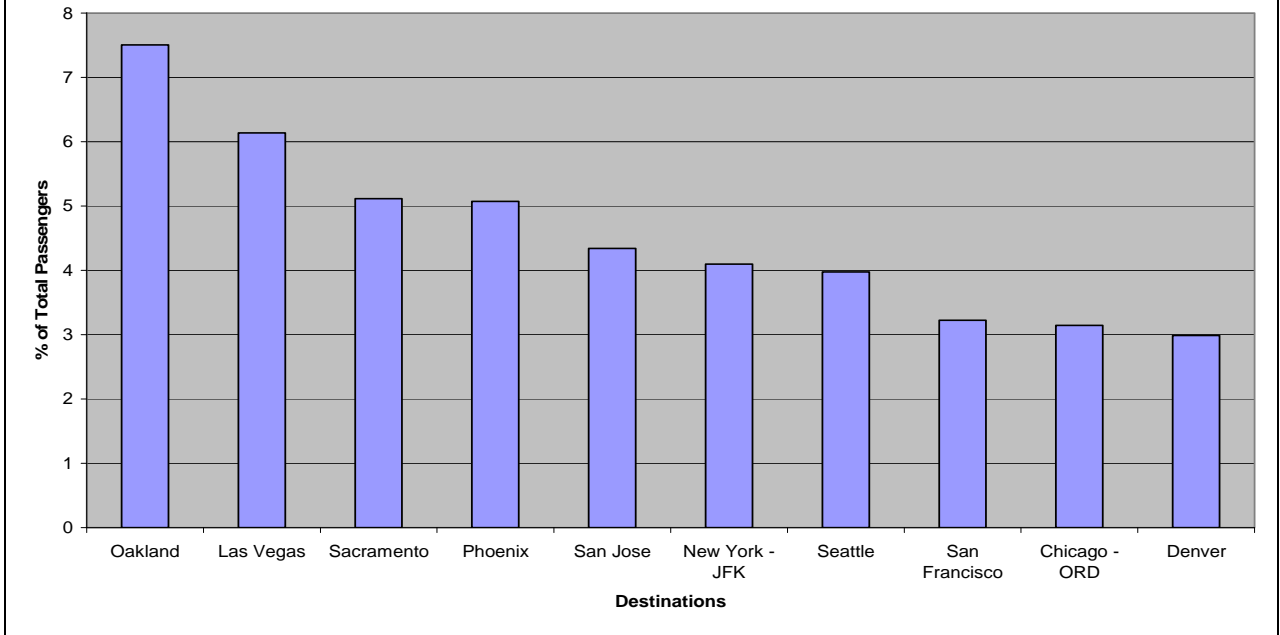


**Top 10 Domestic O&D Markets for LA Basin  
1st Quarter 2008  
(BUR, IPL, LGB, ONT, OXR, PMD, PSP, SNA)**



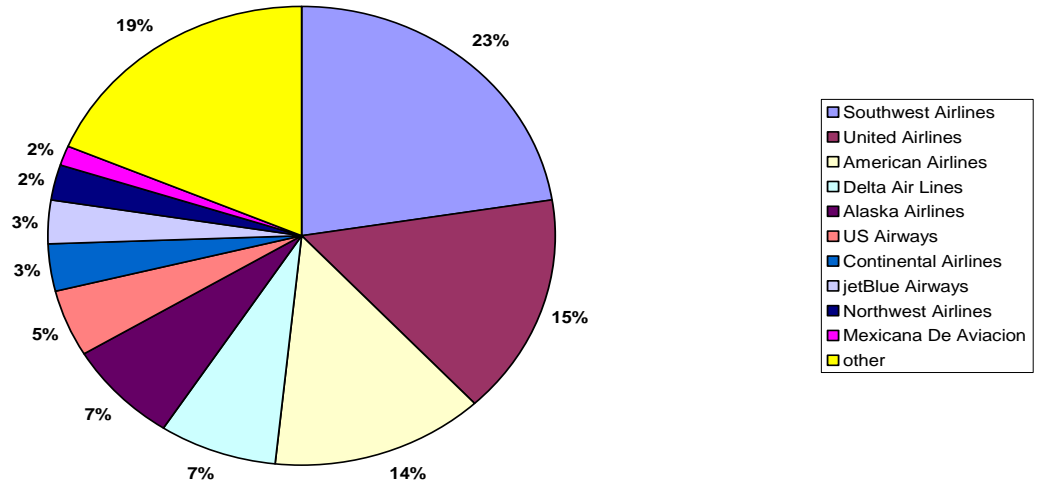
**Based on DOT Traffic**

**Top 10 Domestic O&D Markets for LA Basin  
1st Quarter 2007  
(BUR, IPL, LAX, LGB, ONT, OXR, PMD, PSP, SNA)**



**Based on DOT Traffic**

**Market Share by Departing Seats for LA Basin  
2nd Quarter 2008  
(BUR, IPL, LAX, LGB, ONT, OXR, PSP, SNA)**



**Based on Schedules Data done**

## Domestic Load Factors by Airport and Total LA Basin

### Narrowbody Aircraft

	Jan-Jun 2007	Jan-Jun 2008
BUR	69.74%	66.84%
LAX	77.13%	75.79%
LGB	76.08%	74.89%
ONT	71.51%	68.90%
PMD	00.00%	42.00%
PSP	78.86%	78.84%
SNA	75.62%	71.27%
Total	75.49%	73.36%

Domestic Load Factors by Airport and Total LA Basin  
Regional and Turbo-Prop Aircraft

	Jan-Jun 2007	Jan-Jun 2008
BUR	77.90%	75.41%
IPL	56.14%	47.42%
LAX	72.35%	68.78%
LGB	77.54%	69.43%
ONT	59.75%	67.96%
OXR	53.16%	43.01%
PMD	24.98%	32.68%
PSP	75.37%	74.78%
SNA	69.93%	70.83%
Total	71.43%	69.20%

## Domestic Load Factors by Airport and Total LA Basin

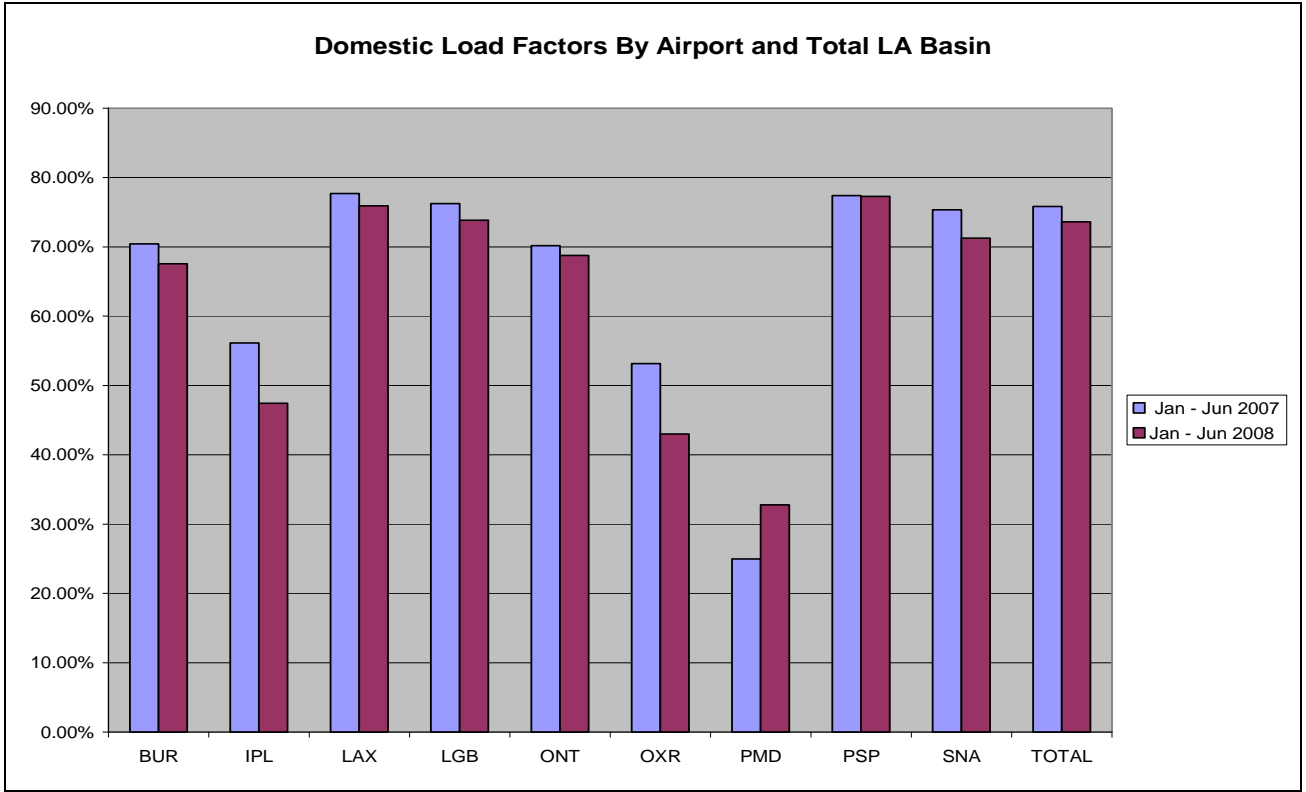
### Widebody Aircraft

	Jan-Jun 2007	Jan-Jun 2008
LAX	85.79%	84.17%
LGB	74.26%*	00.00%
ONT	60.55%	92.81% *
PSP	00.00%	64.71% *
Total	85.77%	84.17%

\* (Q1 only Jan-Mar)

## Domestic Load Factors by Airport and Total LA Basin

	Jan-Jun 2007	Jan-Jun 2008
BUR	70.43%	67.57%
IPL	56.14%	47.42%
LAX	77.69%	75.90%
LGB	76.23%	73.83%
ONT	70.17%	68.77%
OXR	53.16%	43.01%
PMD	24.98%	32.78%
PSP	77.39%	77.29%
SNA	75.33%	71.25%
Total	75.83%	73.61%

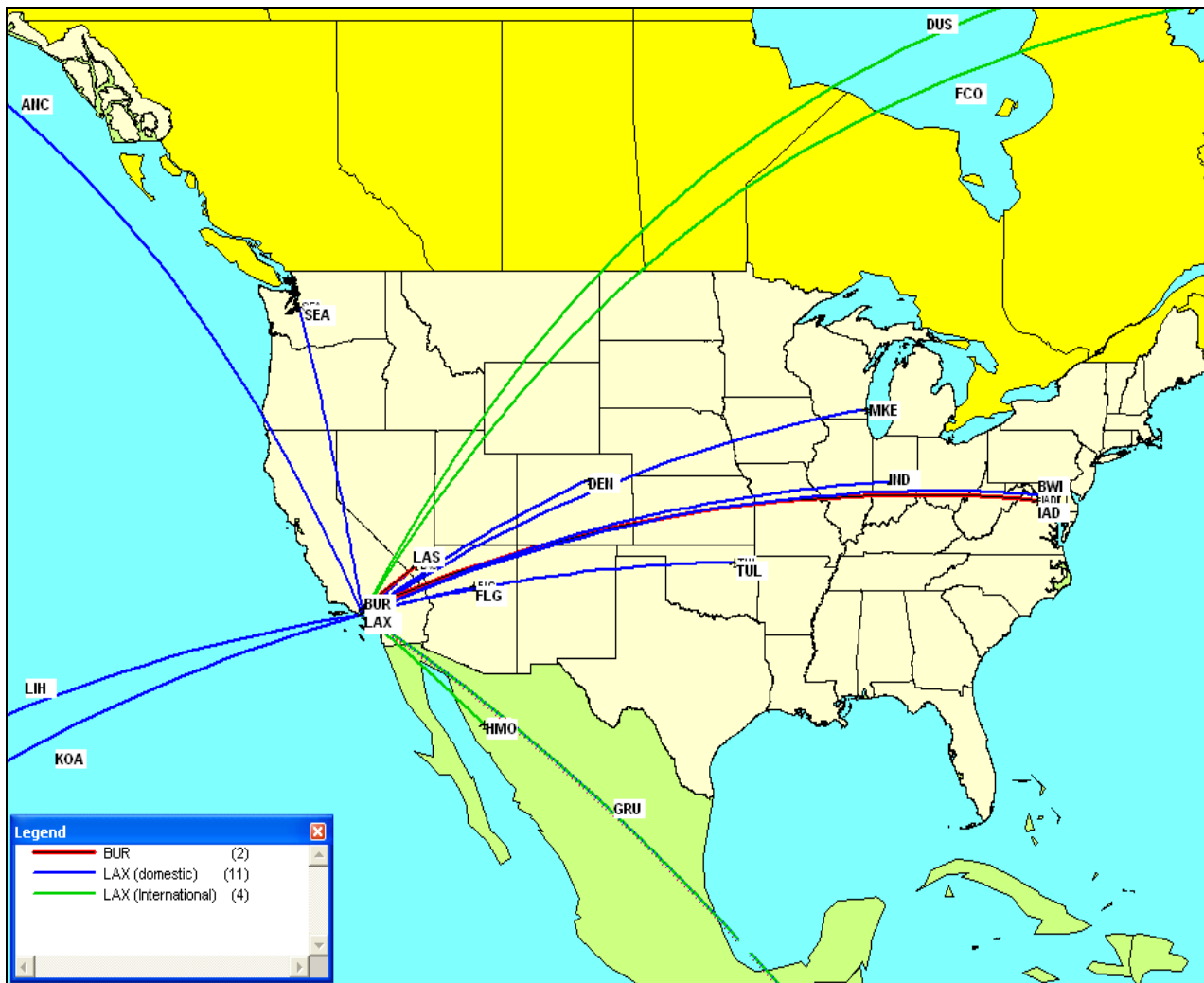


**Based on DOT Traffic Data**

New non-stop Routes from LA Basin Airports  
Comparing  
1st quarter 2008 to 2nd quarter 2008

Burbank - Washington Dulles	jetBlue
Burbank - Las Vegas	jetBlue
LAX - Anchorage	Alaska
LAX - Baltimore/Washington	AirTran
LAX - Denver	Southwest
LAX - Dusseldorf	LTU
LAX - Rome	Alitalia
LAX - Flagstaff	Horizon
LAX - Hermosillo	AeroMexico
LAX - Indianapolis	AirTran
LAX - Kona	Delta
LAX - Las Vegas	Singapore
LAX - Las Vegas	United
LAX - Lihue	Delta
LAX - Milwaukee	AirTran
LAX - Seattle	Virgin America
LAX - Tulsa	SkyWest
LAX - Sao Paulo	Korean
LGB - Austin	jetBlue
LGB - Seattle	jetBlue
LGB - San Jose	jetBlue
ONT - Denver	United

# New non-stop Routes from LA Basin Airports Comparing 1st quarter 2008 to 2nd quarter 2008



Changes in Aircraft Type at LA Basin Airports  
Comparing  
1st quarter 2008 to 2nd quarter 2008

<u>Airport</u>	<u>New Aircraft</u>	<u>Lost Aircraft</u>
BUR	None	737-300
LAX	None	737-300
LGB	Canadair RJ 700 Embraer 190	None
ONT	None	Embraer 120 Brasilia 737-300
PSP	737-800	737-300 737-500
SNA	MD 83	Embraer 120 Brasilia

Changes in Airlines at LA Basin Airports  
Comparing  
1st quarter 2008 to 2nd quarter 2008

<u>Airport</u>	<u>New Airline</u>	<u>Lost Airline</u>
LAX	Alitalia LTU	Aviacsa
ONT	United	ATA
PSP	None	Continental