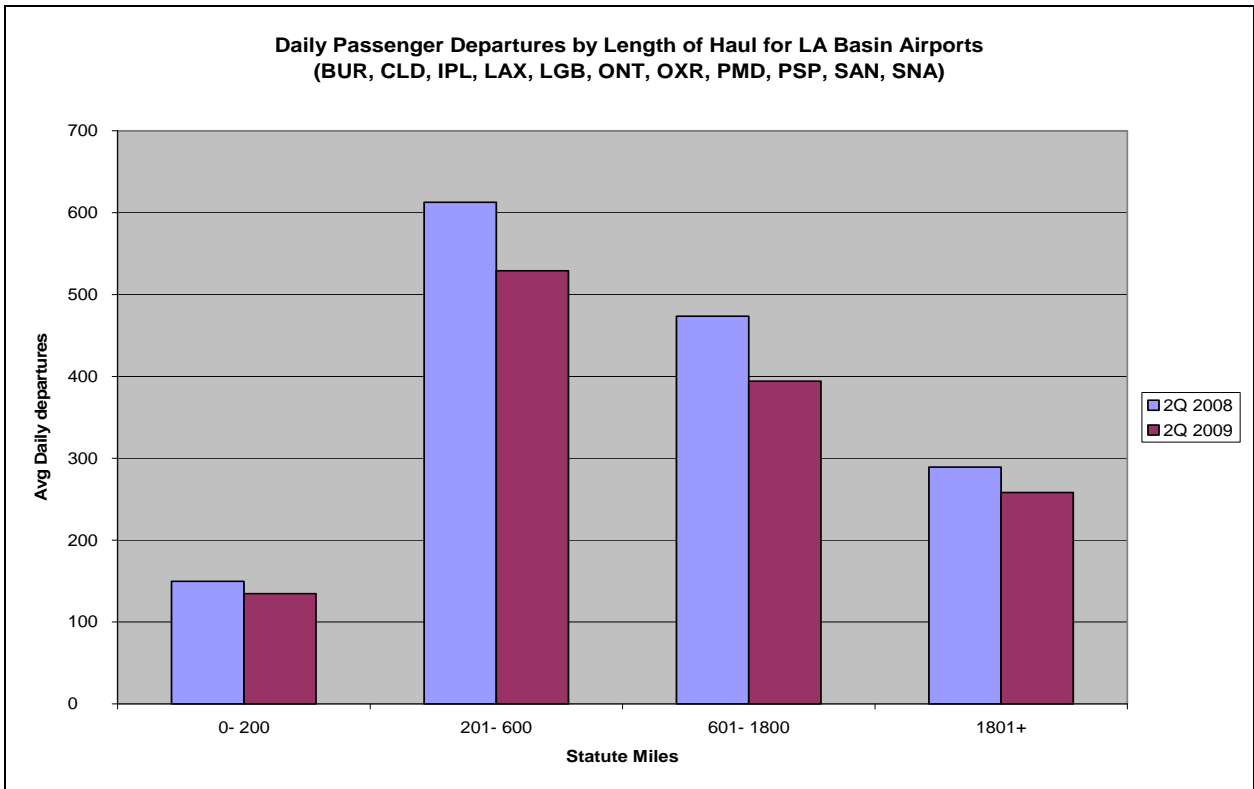


Quarterly Reports for
Southern California Association of
Governments (SCAG)

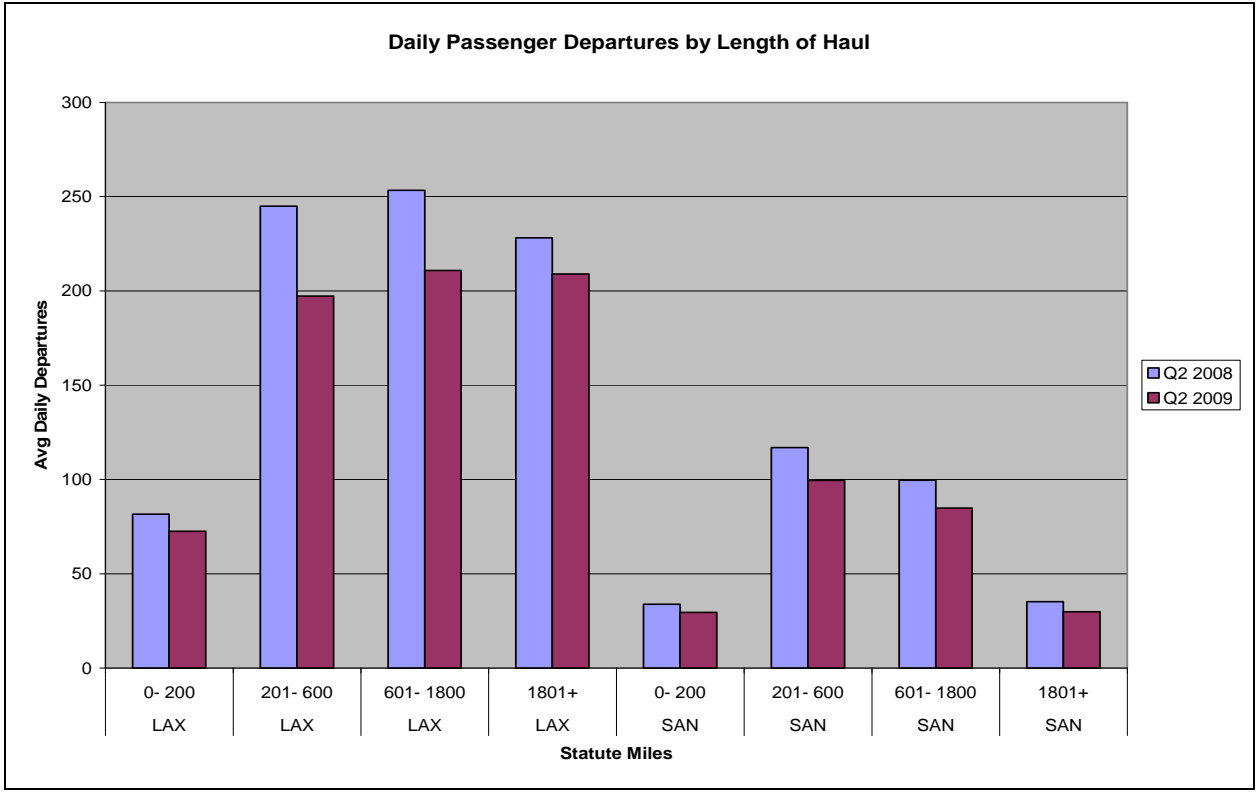
Produced by
OAG Aviation

2nd Quarter 2009

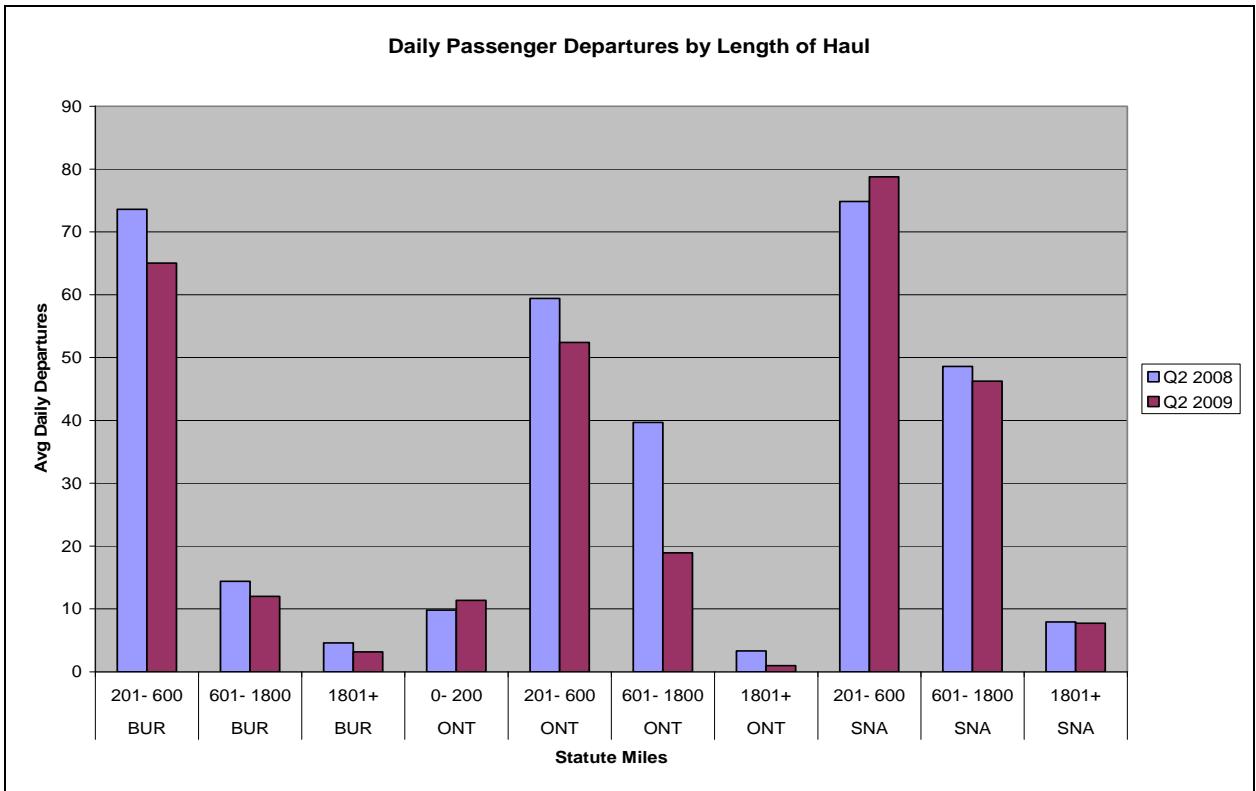


Based on Schedules Data

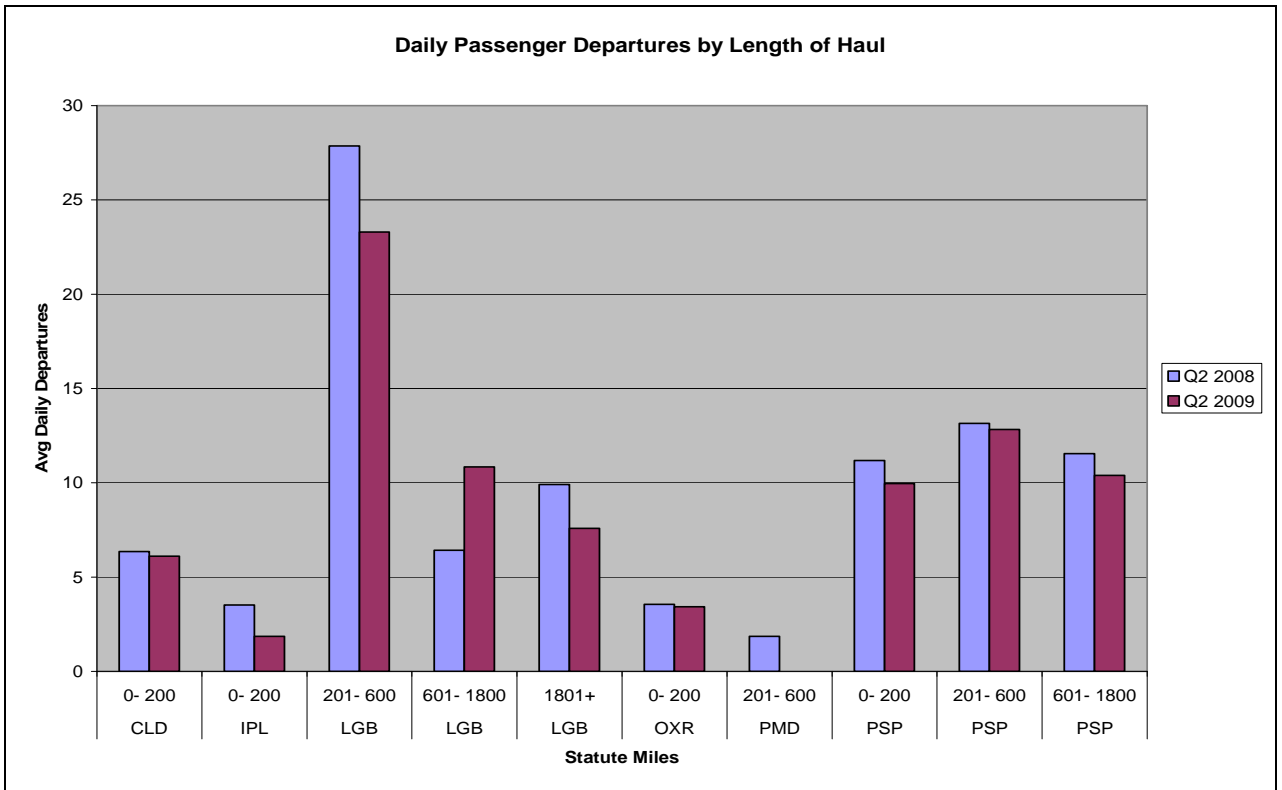
- BUR** – Burbank
- CLD** - Carlsbad (Palomar)
- IPL** - El Centro/Imperial
- LAX** - Los Angeles (Intl)
- LGB** - Long Beach
- ONT** - Ontario
- OXR** – Oxnard/Ventura
- PMD** - Palmdale/Lancaster
- PSP** - Palm Springs
- SAN** - San Diego (Intl)
- SNA** - Santa Ana (J. Wayne)



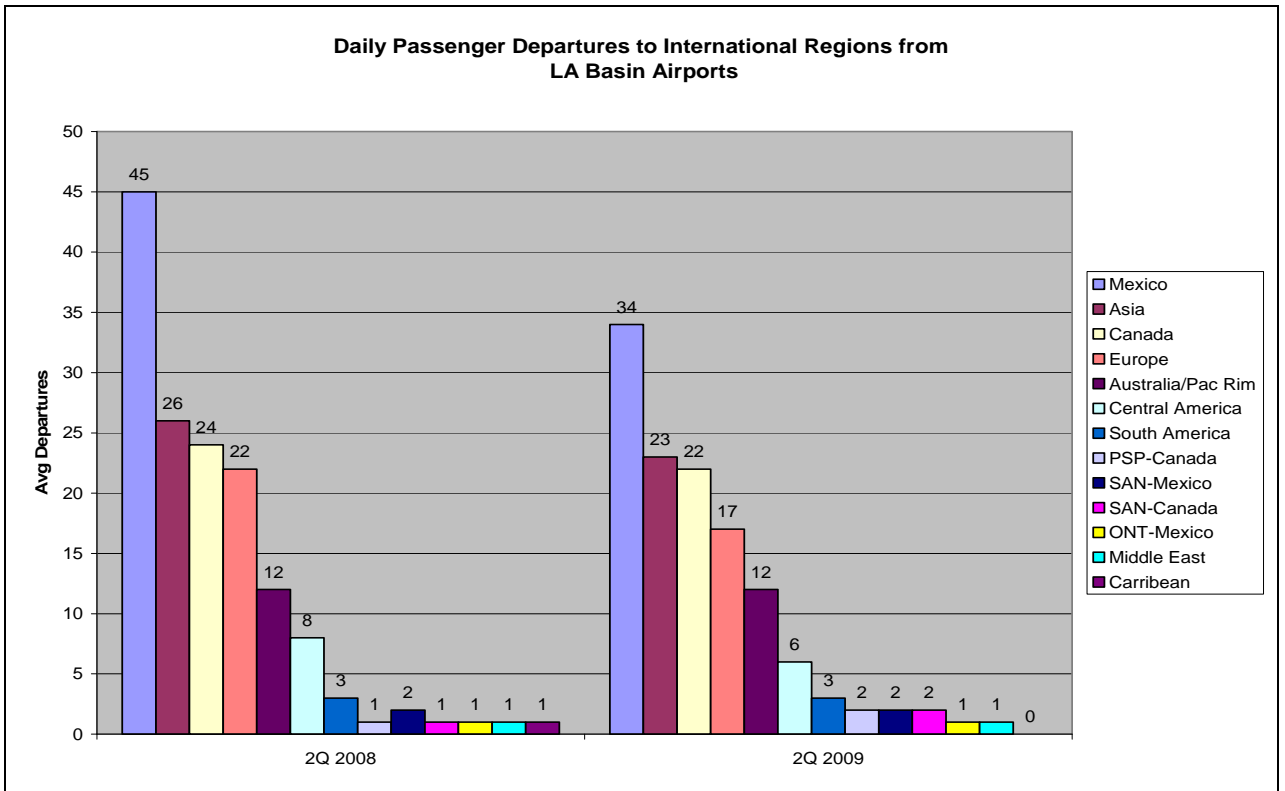
Based on Schedules Data



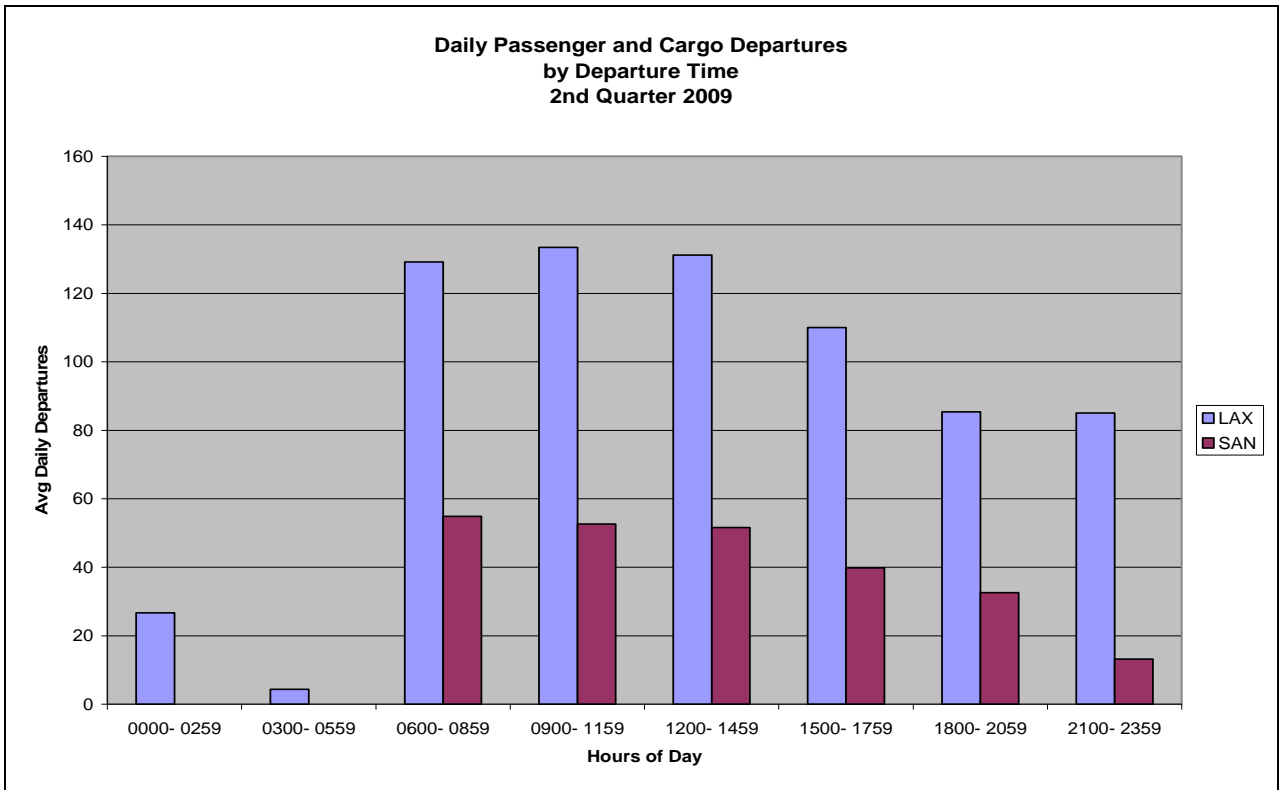
Based on Schedules Data



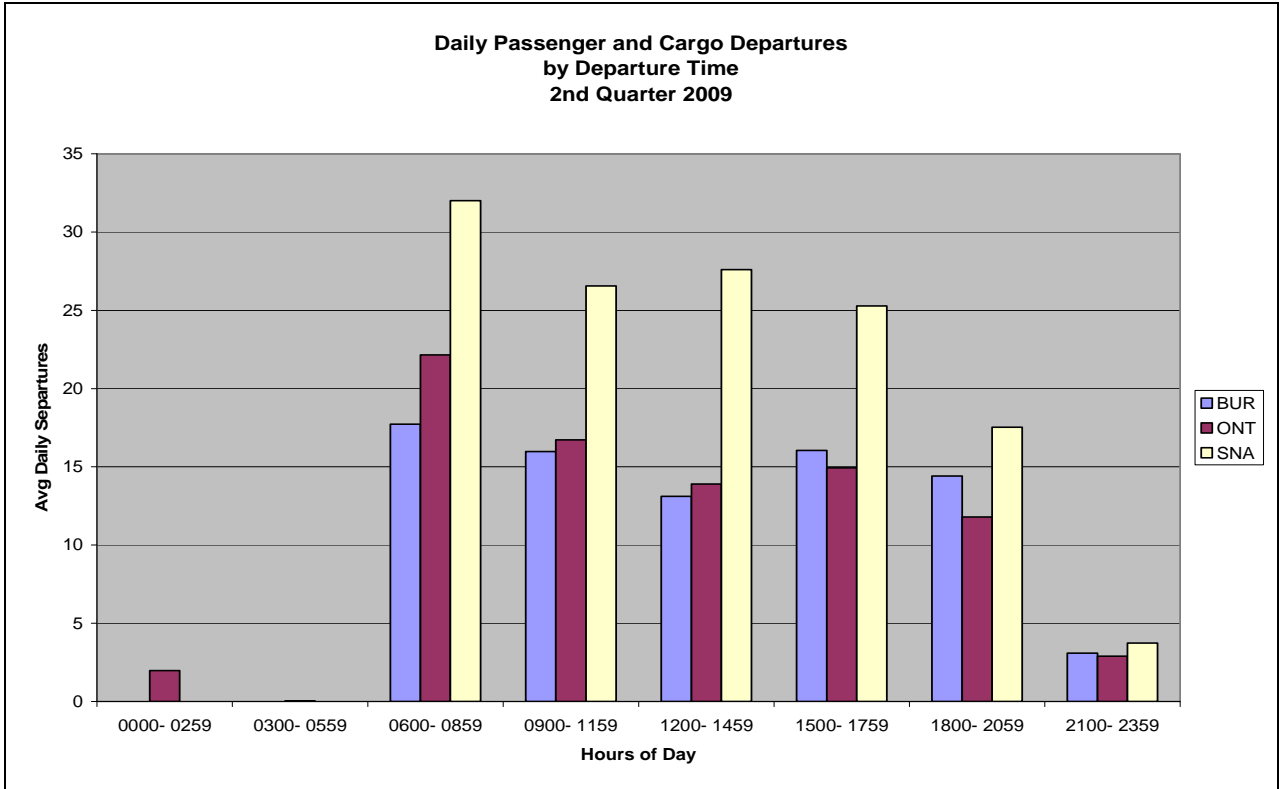
Based on Schedules Data



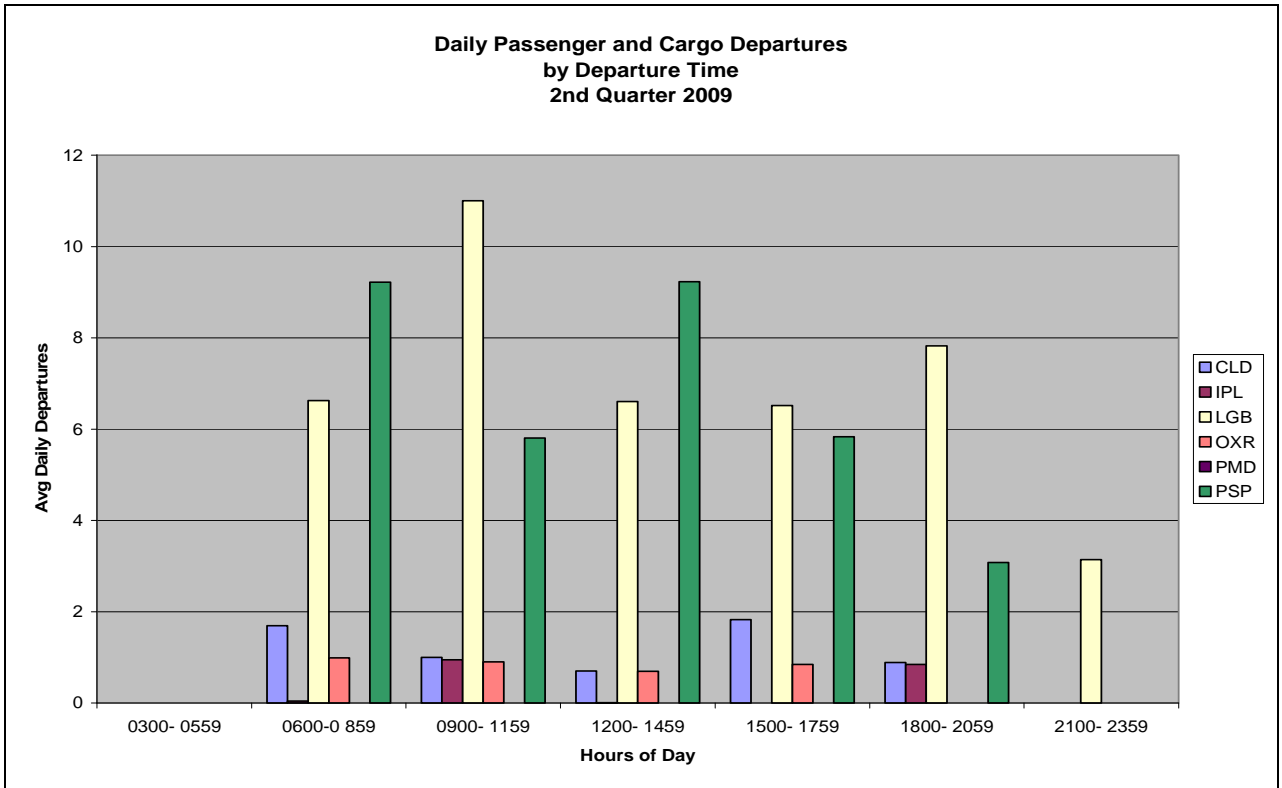
Based on Schedules Data



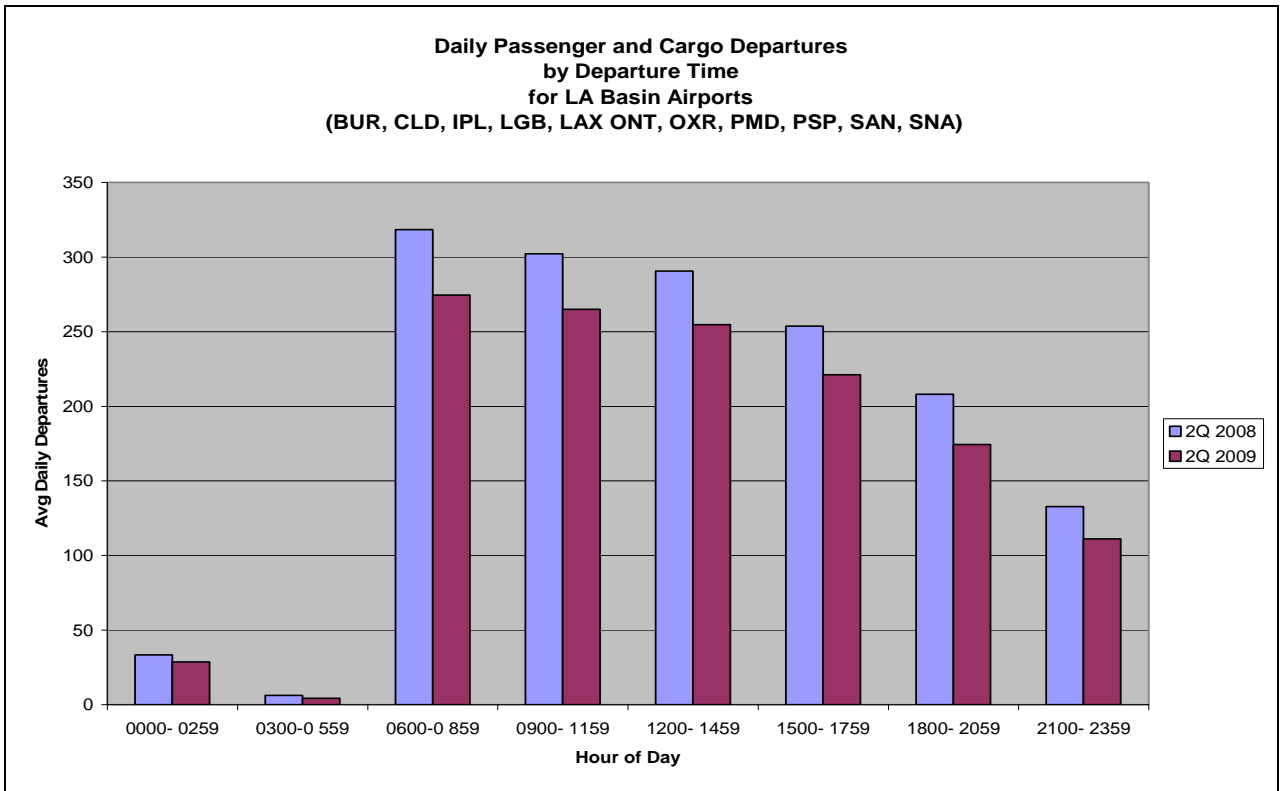
Based on Schedules Data



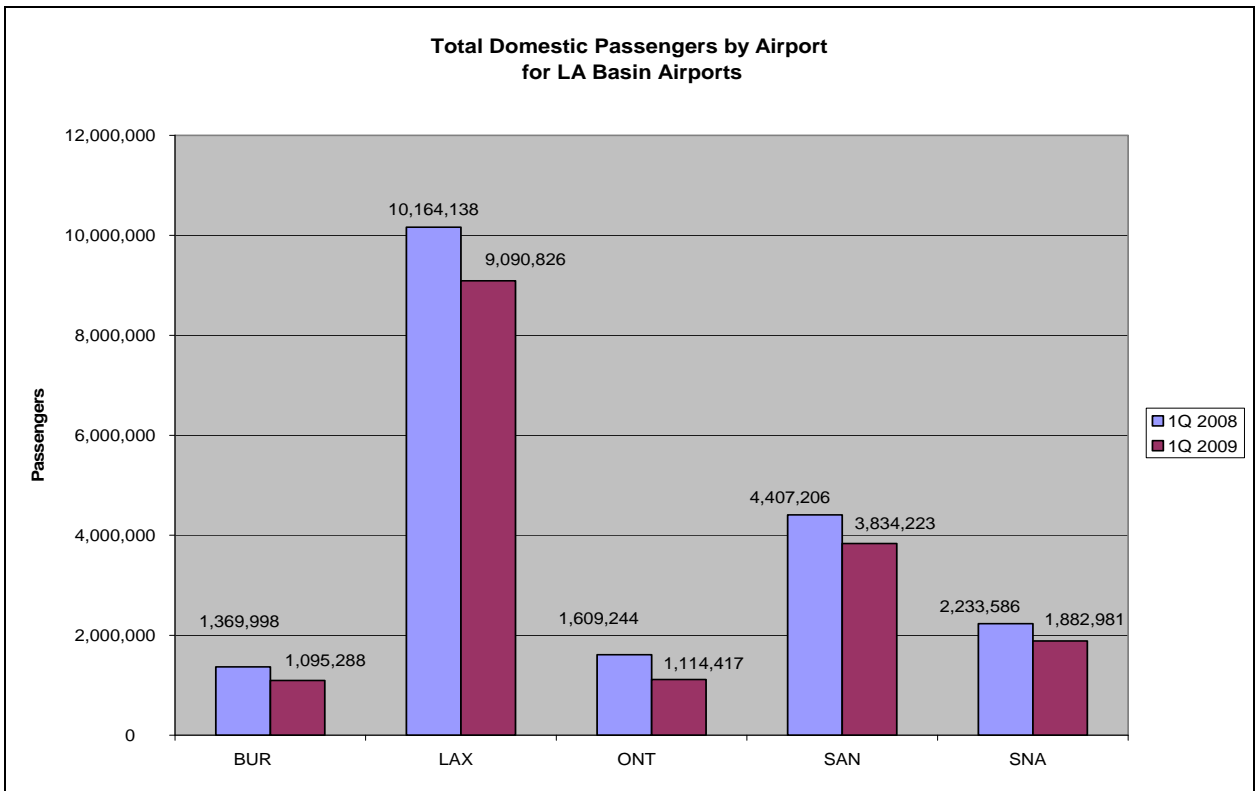
Based on Schedules Data



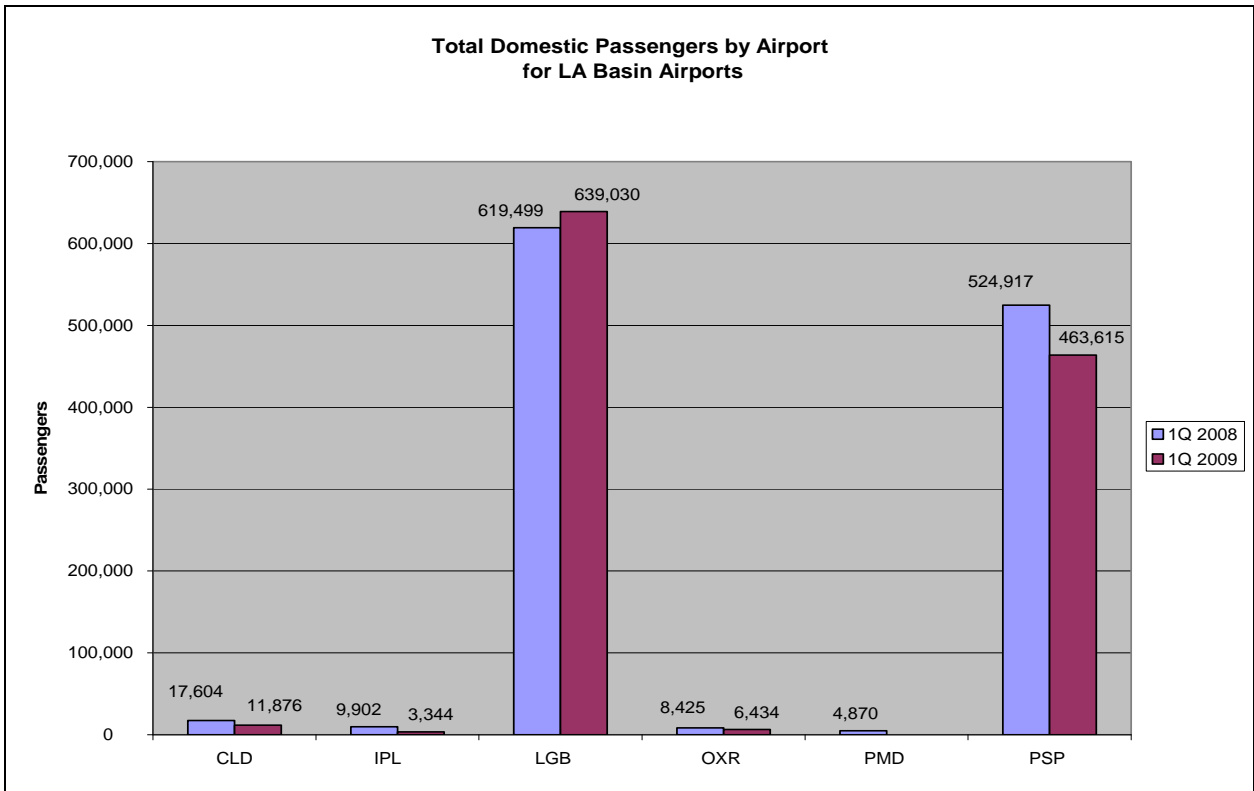
Based on Schedules Data



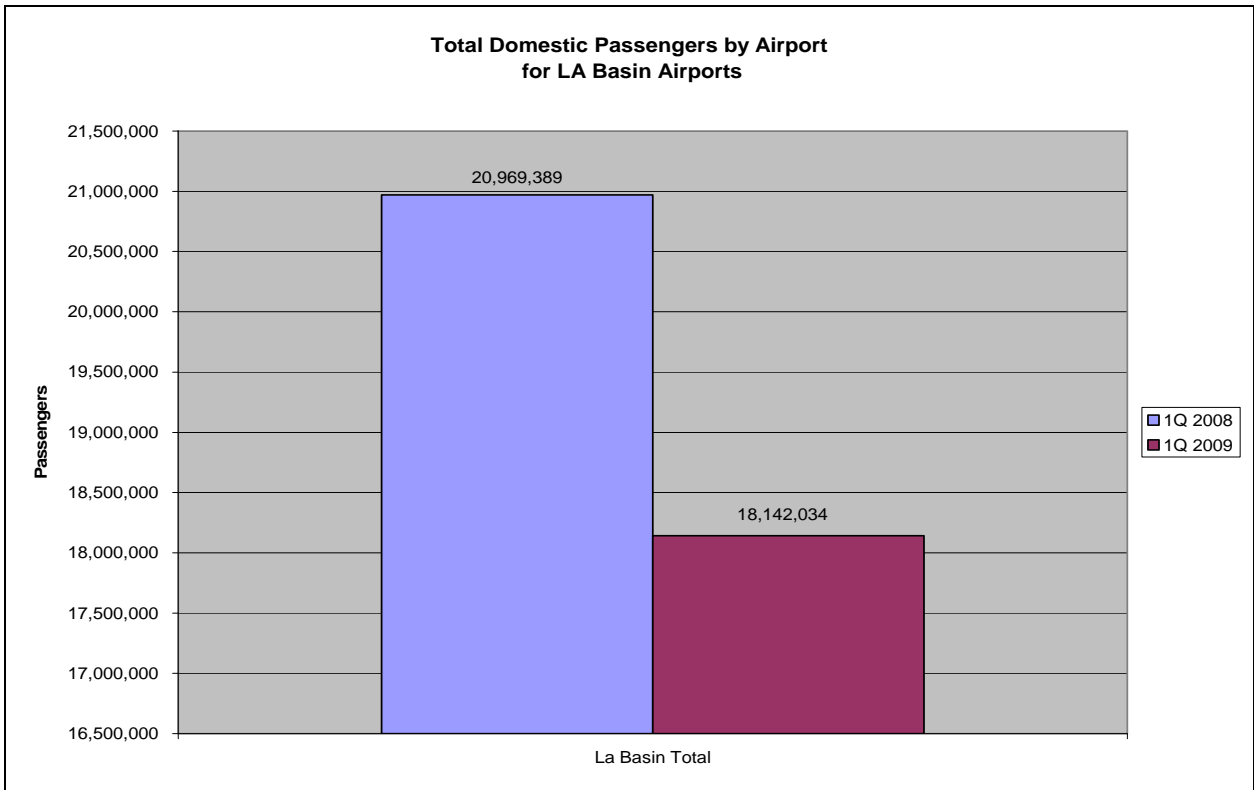
Based on Schedules Data



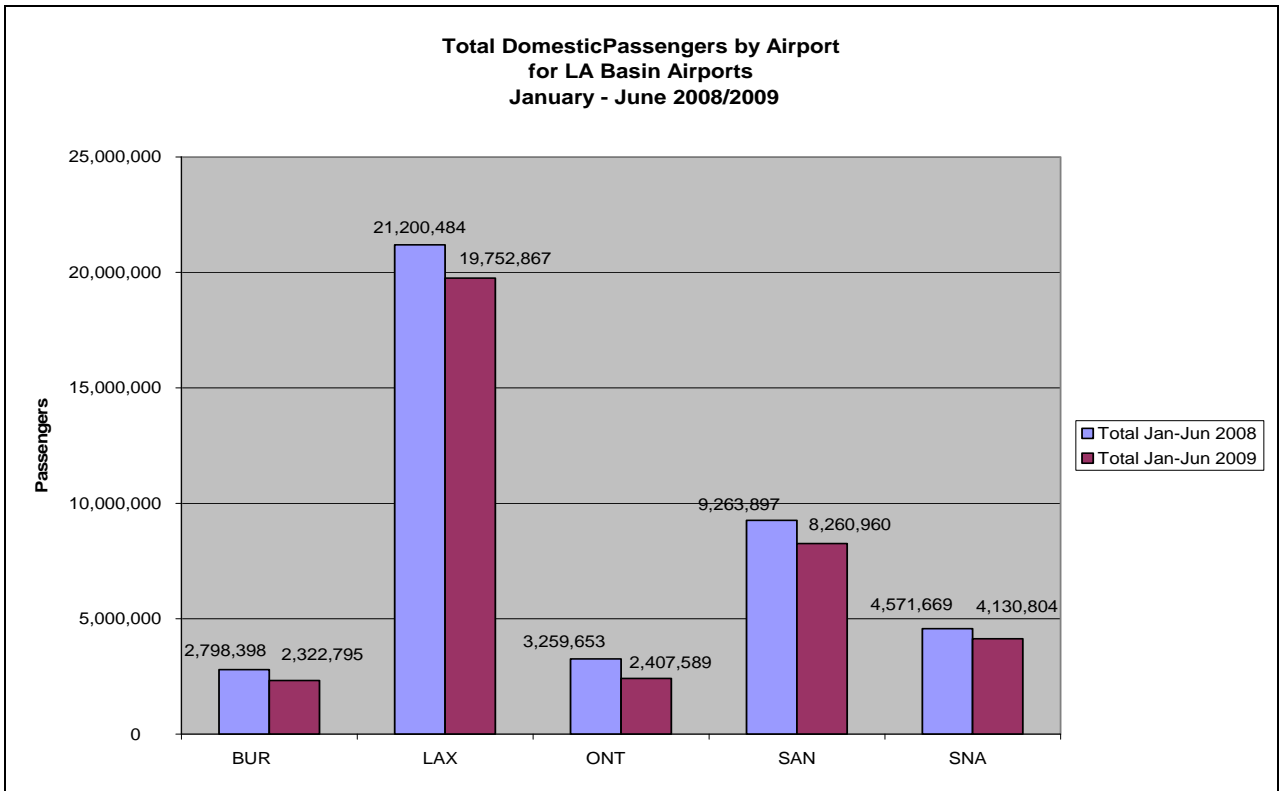
Based on DOT Traffic Data



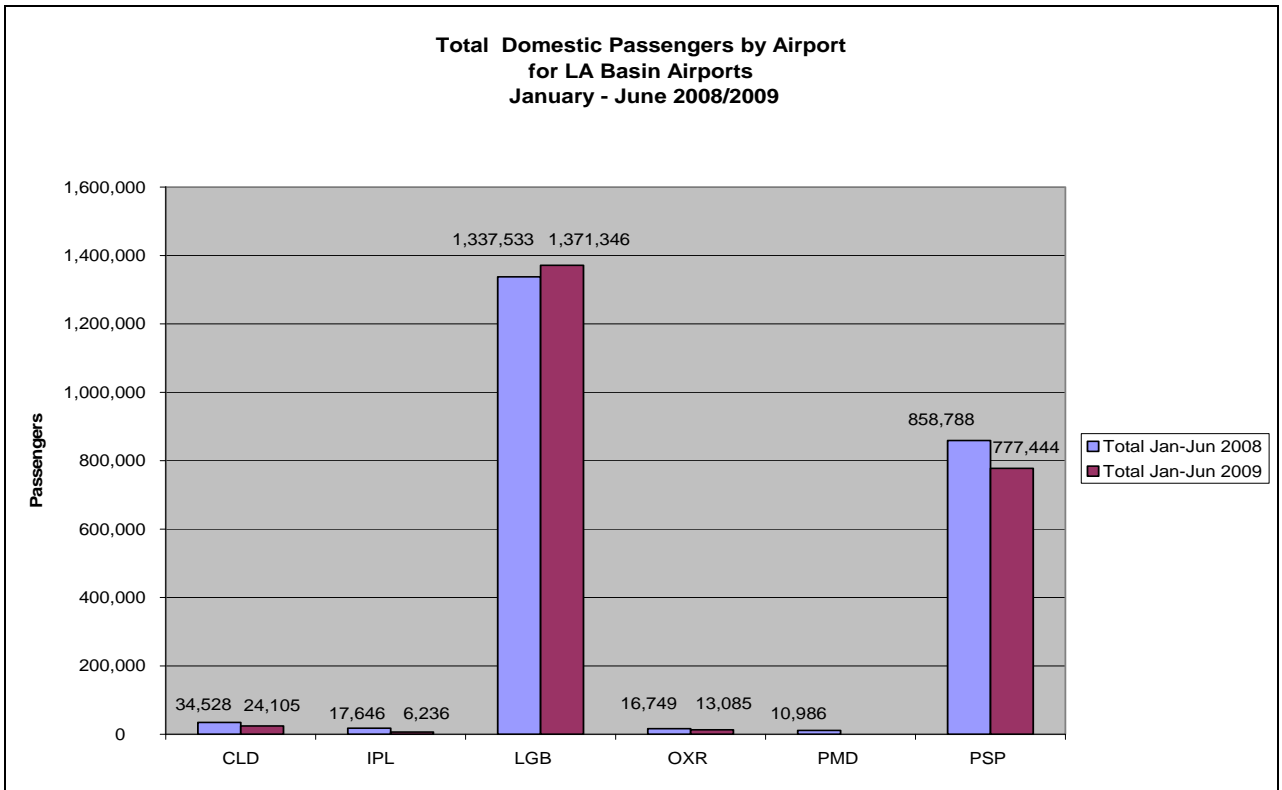
Based on DOT Traffic Data



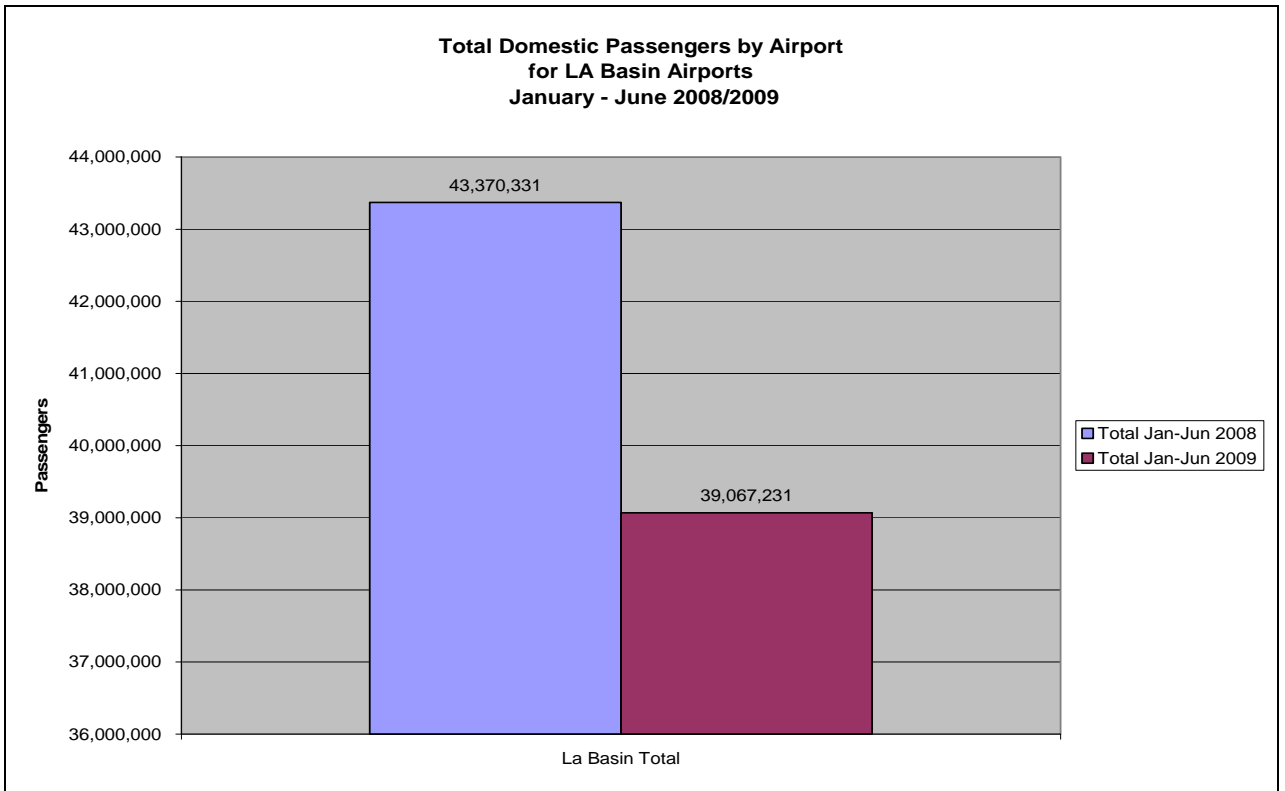
Based on DOT Traffic Data



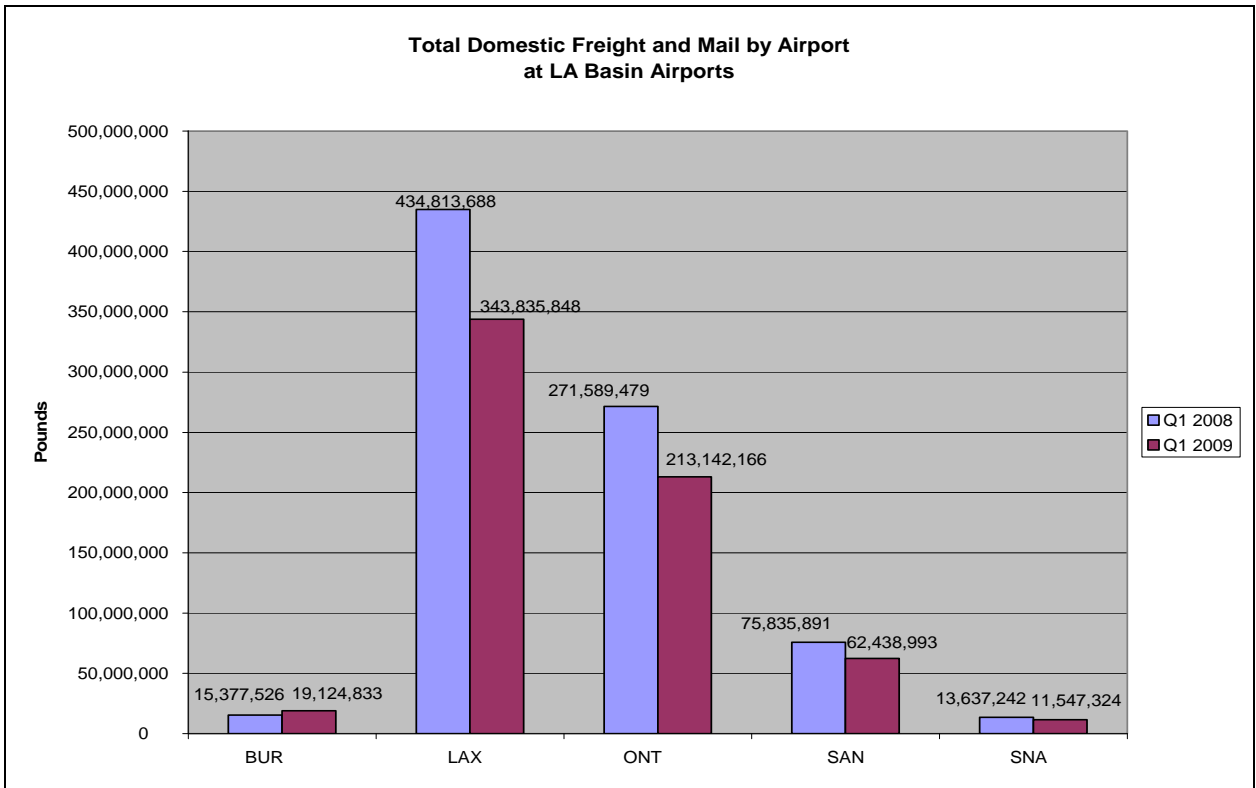
Based on DOT Traffic Data



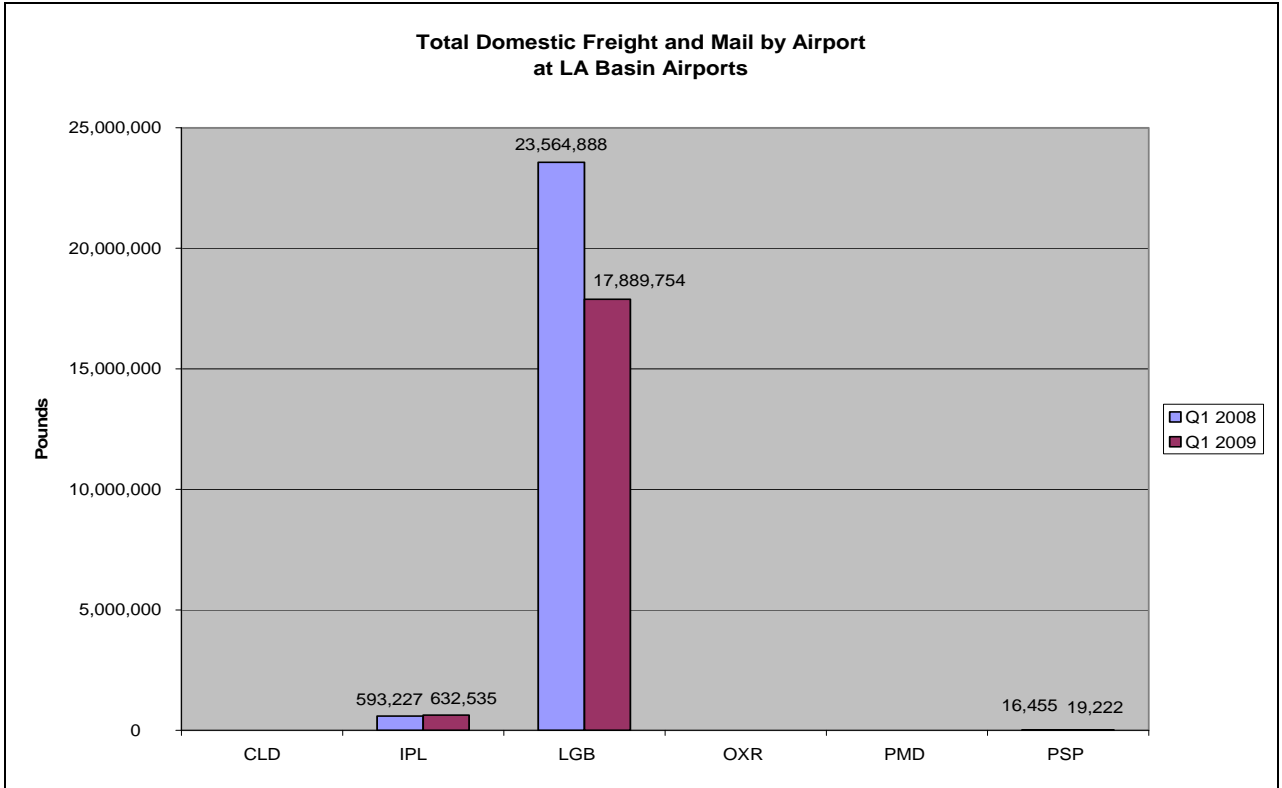
Based on DOT Traffic Data



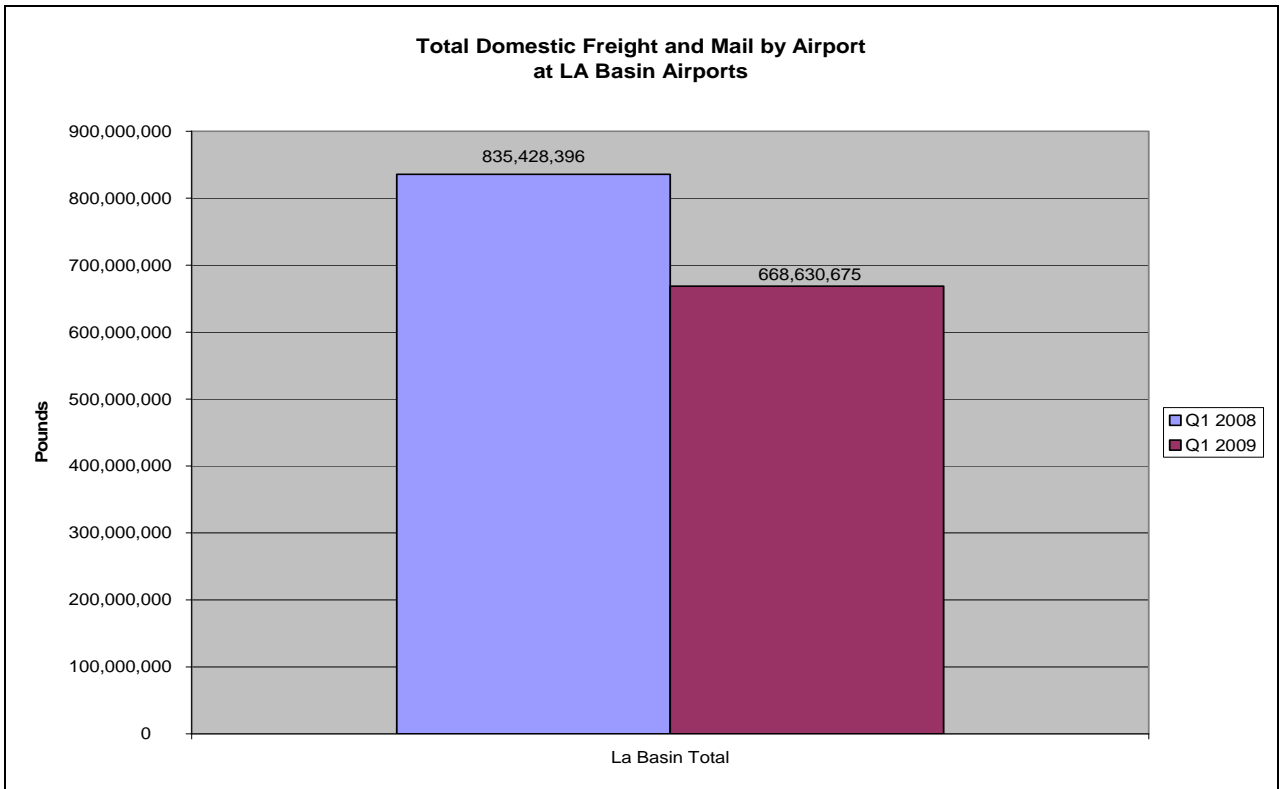
Based on DOT Traffic Data



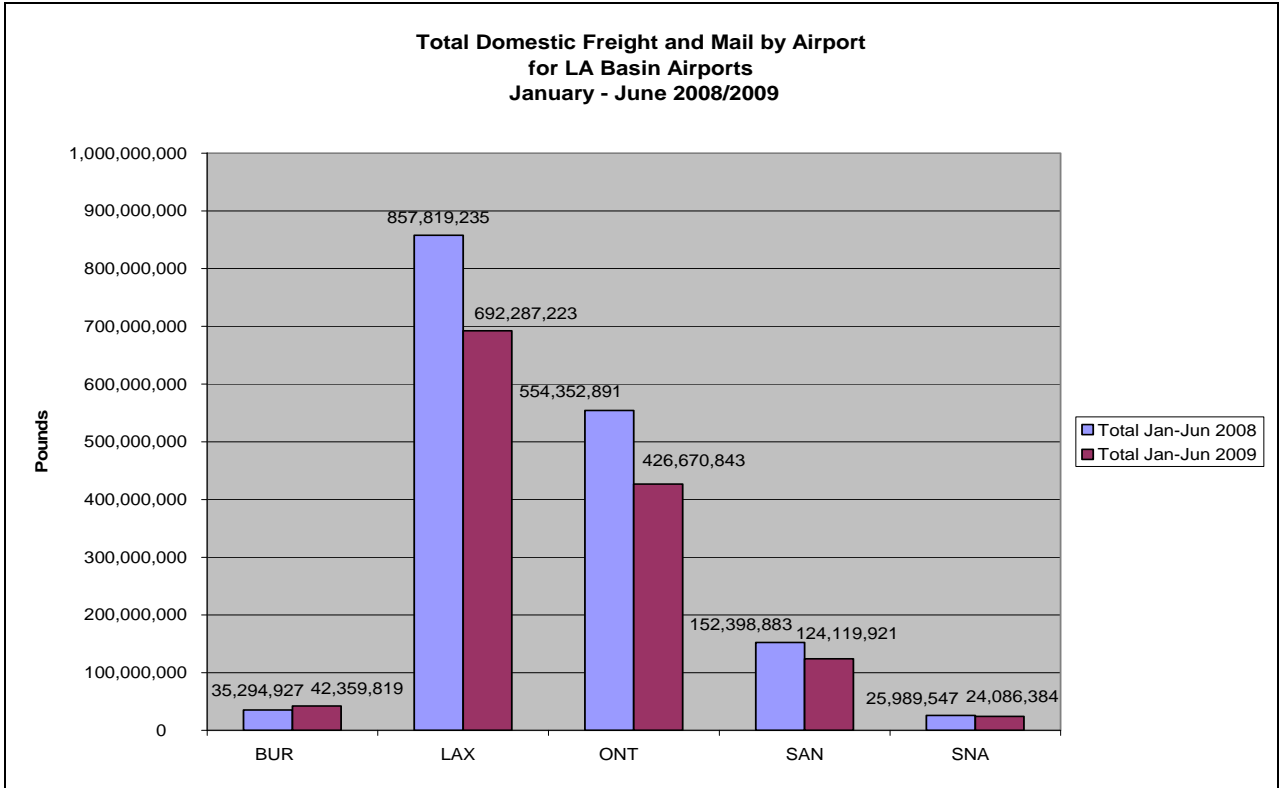
Based on DOT Traffic Data



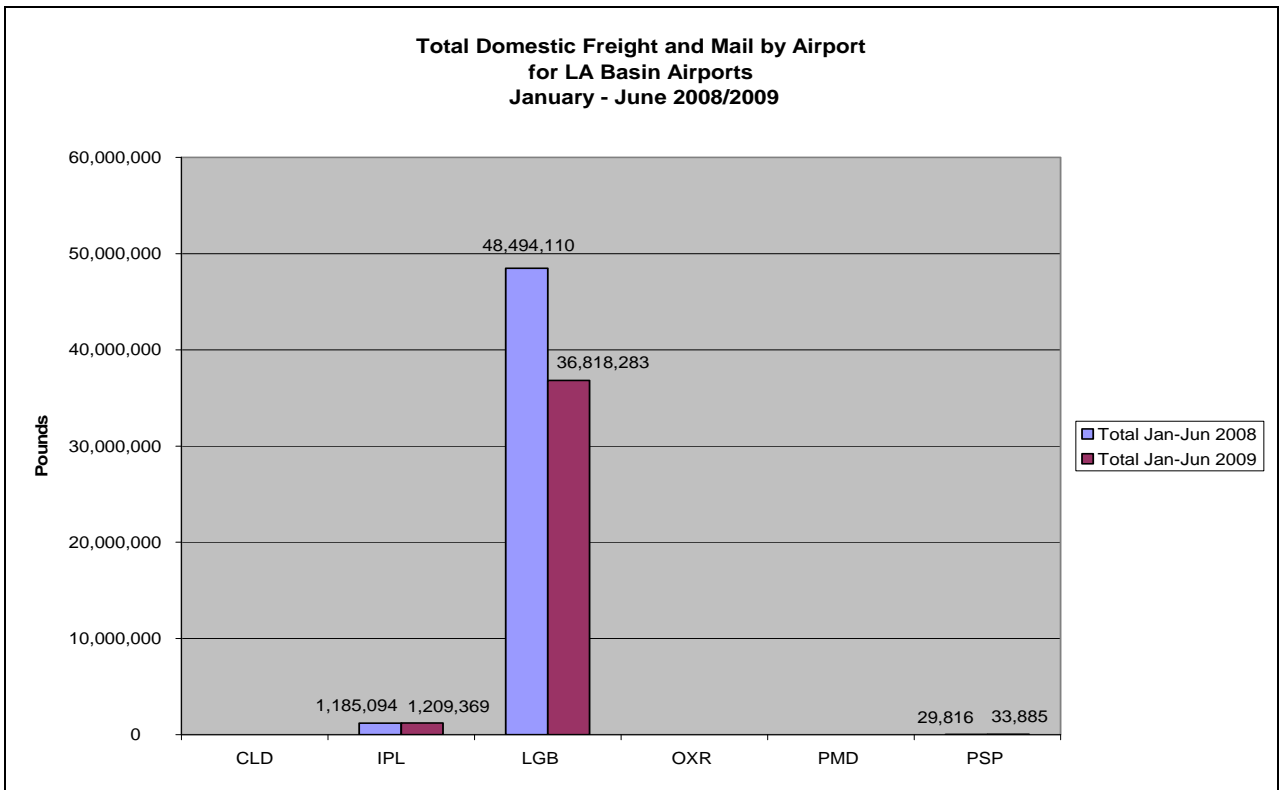
Based on DOT Traffic Data



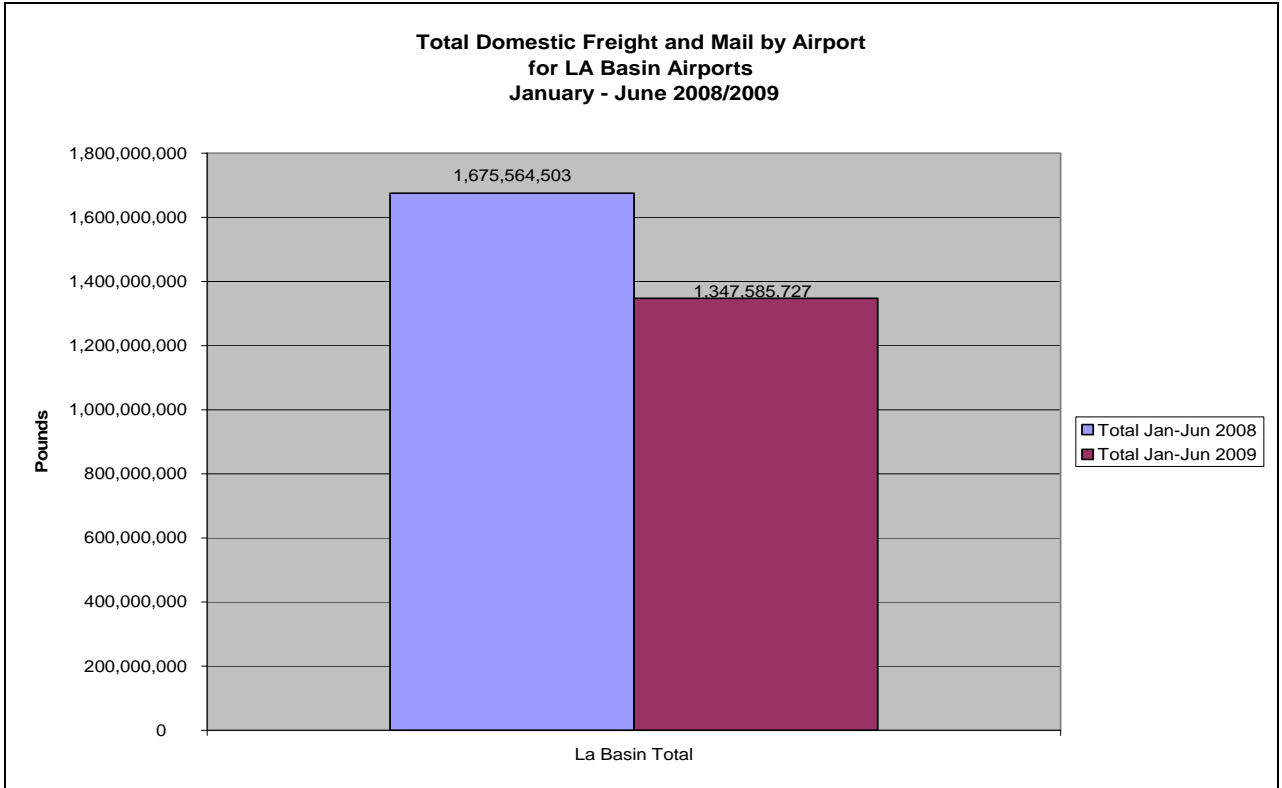
Based on DOT Traffic Data



Based on DOT Traffic Data



Based on DOT Traffic Data

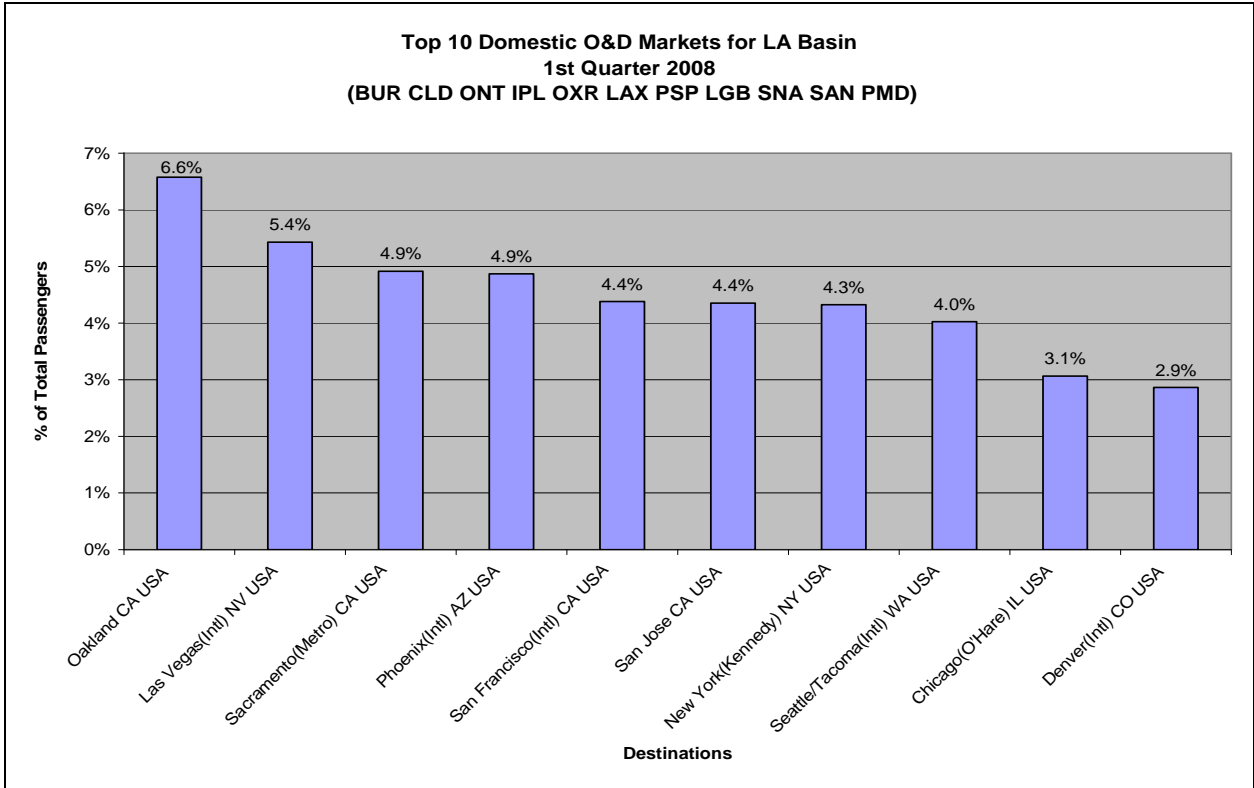


Based on DOT Traffic Data

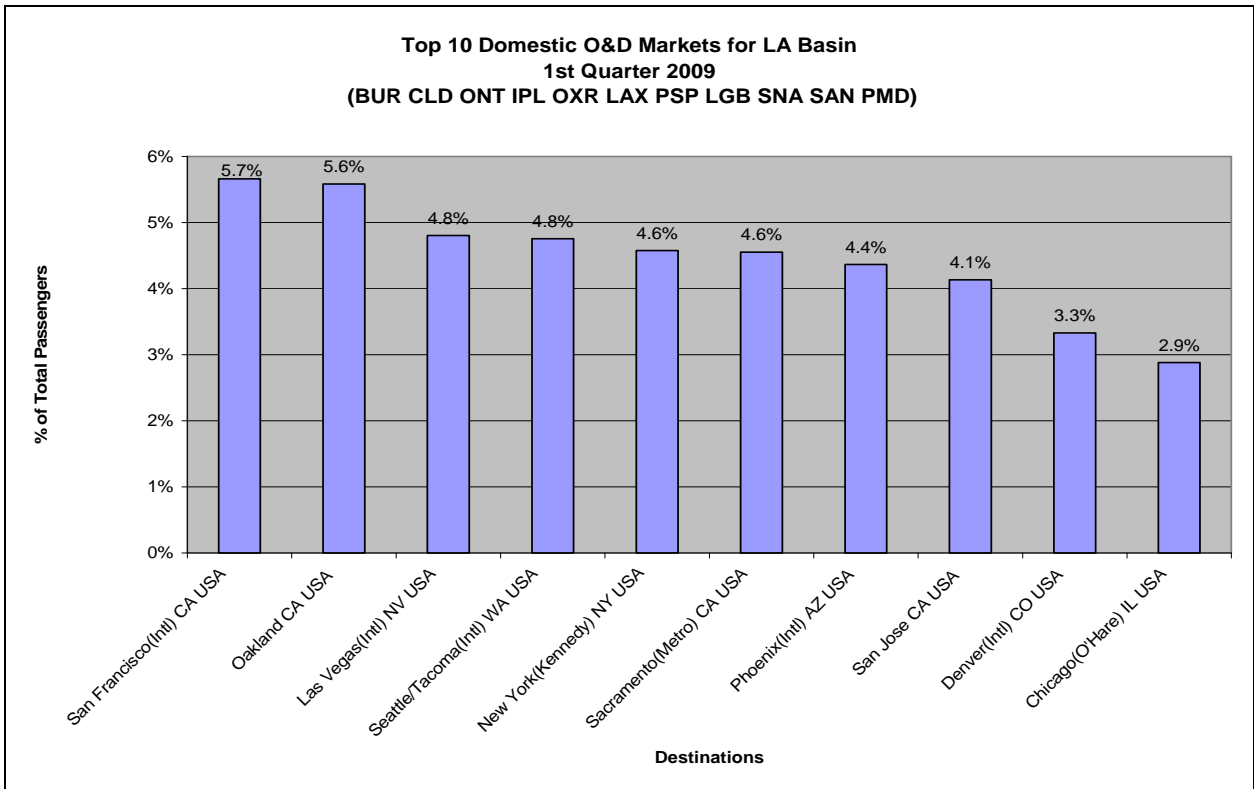
Total Available Seats
by Departure Airport and Total LA Basin

| Origin Airport | 2nd Quarter 2008 | 2nd Quarter 2009 |
|-------------------|---------------------|---------------------|
| LAX | 9,850,624 | 8,893,665 |
| SAN | 3,192,177 | 2,837,188 |
| SNA | 1,577,861 | 1,532,012 |
| ONT | 1,145,918 | 894,962 |
| BUR | 1,038,260 | 891,022 |
| LGB | 467,326 | 469,027 |
| PSP | 238,324 | 218,249 |
| CLD | 17,340 | 16,680 |
| OXR | 9,690 | 9,360 |
| IPL | 9,600 | 5,040 |
| PMD | 8,400 | - |
| Total | 17,555,520 | 15,767,205 |

Based on Schedules Data

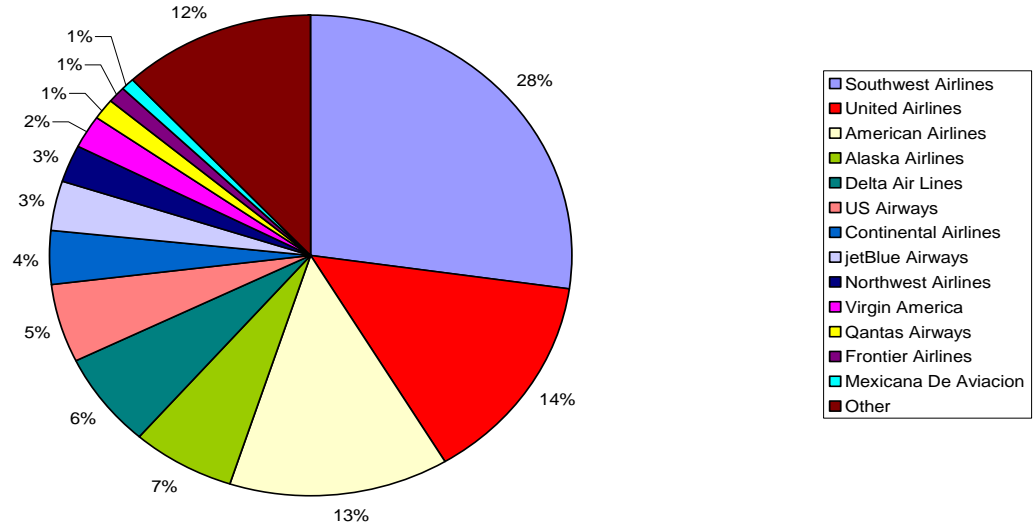


Based on DOT Traffic



Based on DOT Traffic

**Market Share by Departing Seats for LA Basin
2nd Quarter 2009
(BUR CLD ONT IPL OXR LAX PSP LGB SAN SNA PMD)**



Based on Schedules Data

Domestic Load Factors by Airport and Total LA Basin
Narrow Body Aircraft

| Origin Airport | Jan - Jun 2008 | Jan - Jun 2009 |
|-------------------|---|--|
| BUR | 67.43% | 64.38% |
| LAX | 76.65% | 76.88% |
| LGB | 76.05% | 74.92% |
| ONT | 69.99% | 70.68% |
| PMD | 42.00% <small>Allegiant Air Jan 08</small> | No Service <small>Allegiant Air Stopped Reporting</small> |
| PSP | 79.02% | 78.56% |
| SAN | 76.51% | 75.90% |
| SNA | 72.32% | 70.25% |
| Total | 74.81% | 74.43% |

Based on DOT Traffic Data

Domestic Load Factors by Airport and Total LA Basin
Regional and Turbo-Prop Aircraft

| Origin Airport | Jan - Jun 2008 | Jan - Jun 2009 |
|-------------------|-------------------|--|
| BUR | 76.09% | 74.71% |
| CLD | 48.58% | 36.69% |
| IPL | 46.17% | 31.02% |
| LAX | 69.39% | 71.28% |
| LGB | 70.45% | 73.09% |
| ONT | 69.62% | 71.51% |
| OXR | 43.05% | 36.29% |
| PMD | 33.31% | No Service <small>Skywest Stopped Reporting</small> |
| PSP | 74.19% | 74.51% |
| SAN | 71.13% | 76.74% |
| SNA | 70.88% | 72.05% |
| Total | 69.77% | 71.78% |

Based on DOT Traffic Data

Domestic Load Factors by Airport and Total LA Basin
Widebody Aircraft

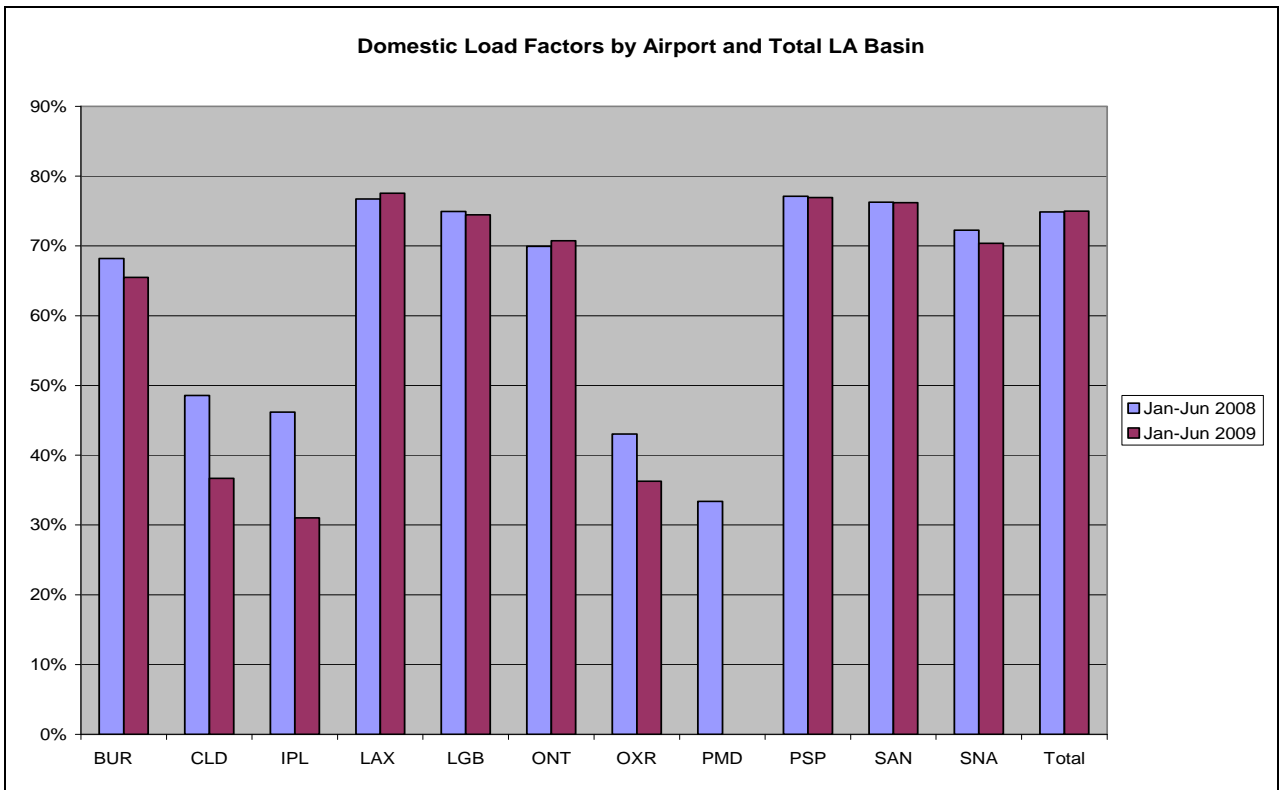
| Origin Airport | Jan - Jun 2008 | Jan - Jun 2009 |
|-------------------|--|-------------------|
| LAX | 85.22% | 87.62% |
| ONT | 92.81% | No Service |
| PSP | 64.71% <small>Pace Airline Flights in Jan08</small> | No Service |
| SAN | 83.77% | 88.57% |
| Total | 85.10% | 87.68% |

Based on DOT Traffic Data

Domestic Load Factors by Airport and Total LA Basin

| Origin Airport | Jan - Jun 2008 | Jan - Jun 2009 |
|-------------------|-------------------|--|
| BUR | 68.19% | 65.50% |
| CLD | 48.58% | 36.69% |
| IPL | 46.17% | 31.02% |
| LAX | 76.73% | 77.54% |
| LGB | 74.92% | 74.45% |
| ONT | 69.94% | 70.75% |
| OXR | 43.05% | 36.29% |
| PMD | 33.39% | No Service Allegiant Air and Skywest Stopped Reporting |
| PSP | 77.11% | 76.93% |
| SAN | 76.27% | 76.18% |
| SNA | 72.25% | 70.36% |
| Total | 74.84% | 74.97% |

Based on DOT Traffic Data



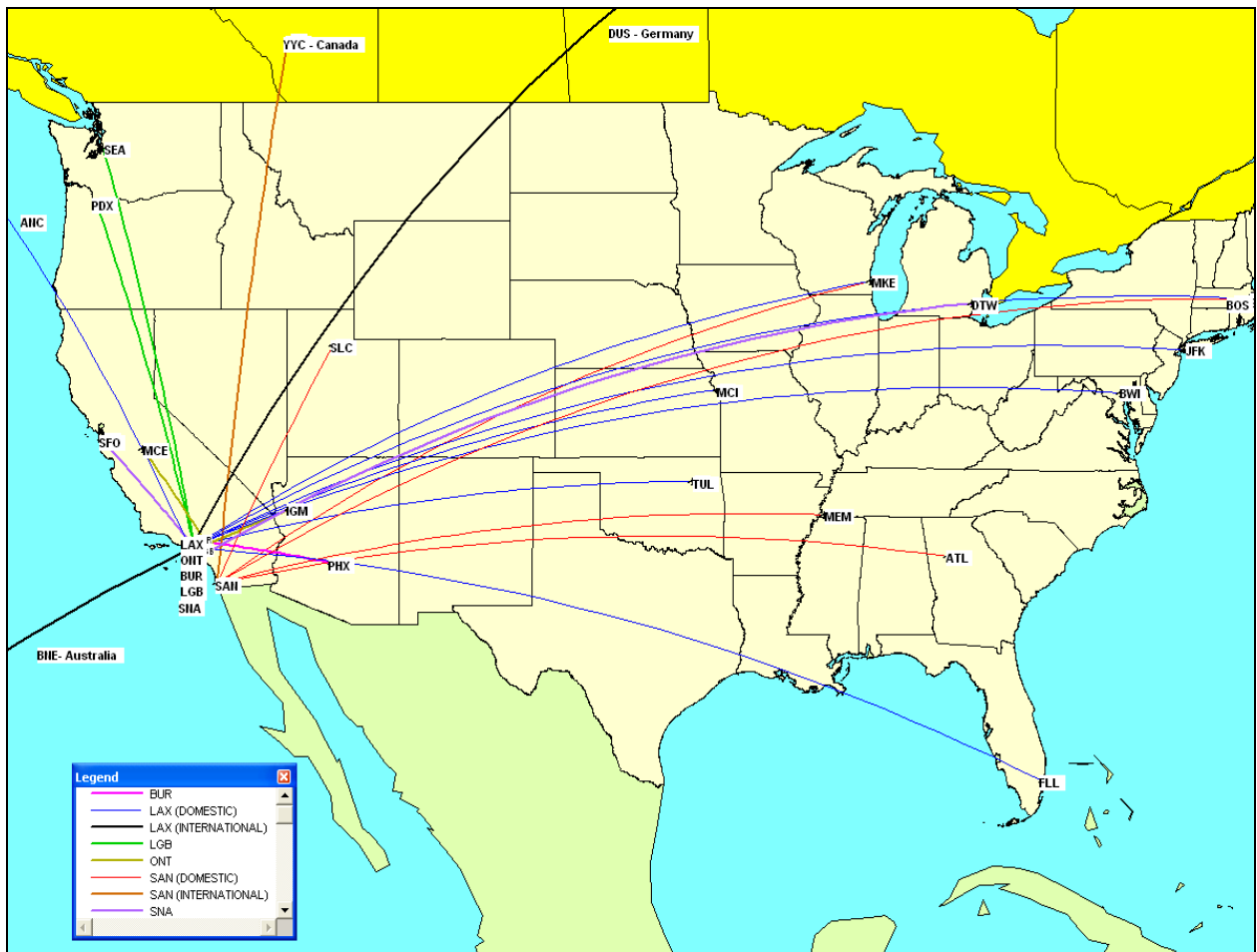
Based on DOT Traffic Data

New Non-Stop Routes from LA Basin Airports
Comparing
1st Quarter 2009 to 2nd Quarter 2009

| Origin Airport | Destination Airport | Operating Carrier |
|----------------|-------------------------------|---------------------------|
| BUR | Phoenix(Intl) AZ | US Airways |
| LAX | Anchorage(Intl) AK | Alaska Airlines |
| LAX | Baltimore(Intl) MD | AirTran Airways |
| LAX | Boston(Intl) MA | jetBlue Airways |
| LAX | Brisbane QL Australia | Vaustralia |
| LAX | Dusseldorf(Intl) Germany | LTU International Airways |
| LAX | Ft. Lauderdale(Intl) FL | Spirit Airlines |
| LAX | Kansas City(Intl) MO | Midwest Airlines |
| LAX | Milwaukee WI | AirTran Airways |
| LAX | New York(Kennedy) NY | JetBlue Airways |
| LAX | Tulsa OK | UA EXP/Skywest |
| LGB | Portland OR | Horizon Air |
| LGB | Seattle/Tacoma(Intl) WA | Horizon Air |
| ONT | Kingman AZ | Great Lakes Airlines |
| ONT | Merced (Macready Regional) CA | Great Lakes Airlines |
| SAN | Atlanta(Intl) GA | AirTran Airways |
| SAN | Boston(Intl) MA | American Airlines |
| SAN | Calgary AB Canada | WestJet |
| SAN | Calgary AB Canada | Air Canada Jazz |
| SAN | Memphis TN | Northwest Airlines |
| SAN | Milwaukee WI | AirTran Airways |
| SAN | Salt Lake City UT | Mesaba Airlines |
| SNA | Detroit(Metro Wayne) MI | Northwest Airlines |
| SNA | San Francisco(Intl) CA | Southwest Airlines |
| SNA | San Francisco(Intl) CA | Virgin America |

Based on Schedules Data

New Non-Stop Routes from LA Basin Airports Comparing 1st Quarter 2009 to 2nd Quarter 2009



Lost Non-Stop Routes from LA Basin Airports
Comparing
1st Quarter 2009 to 2nd Quarter 2009

| Origin Airport | Destination Airport | Operating Carrier |
|----------------|------------------------------|-------------------|
| LAX | Bozeman MT USA | UA EXP/Skywest |
| LAX | El Paso TX USA | American Eagle |
| LAX | Jackson WY USA | United Airlines |
| LAX | Las Vegas(Intl) NV USA | United for TED |
| LAX | Melbourne(Intl) VI Australia | United Airlines |
| LAX | Montego Bay Jamaica | Air Jamaica |
| LAX | New Orleans(Intl) LA USA | United for TED |
| LAX | Santiago(Intl) Chile | Lan Airlines |
| LAX | Seattle/Tacoma(Intl) WA USA | United Airlines |
| LAX | Sun Valley ID USA | Horizon Air |
| LAX | Tampa(Intl) FL USA | Delta Air Lines |
| ONT | Denver(Intl) CO USA | United for TED |
| SAN | Las Vegas(Intl) NV USA | Mesa Airlines |

Based on Schedules Data

Changes in Aircraft Type at LA Basin Airports
Comparing
1st Quarter 2009 to 2nd Quarter 2009

| Airport | New Aircraft | Lost Aircraft |
|---------|---------------------------|-------------------------|
| LAX | AIRBUS INDUSTRIE A340 | |
| LAX | | MCDONNELL DOUGLAS MD-87 |
| LAX | BOEING 717-200 | |
| ONT | BOEING 737-900 | |
| ONT | BOEING 737-800 (WINGLETS) | |
| ONT | MCDONNELL DOUGLAS MD-90 | |
| PSP | BOEING 737-600 | |
| PSP | | BOEING 757-200 |
| SAN | BOEING 757-300 | |

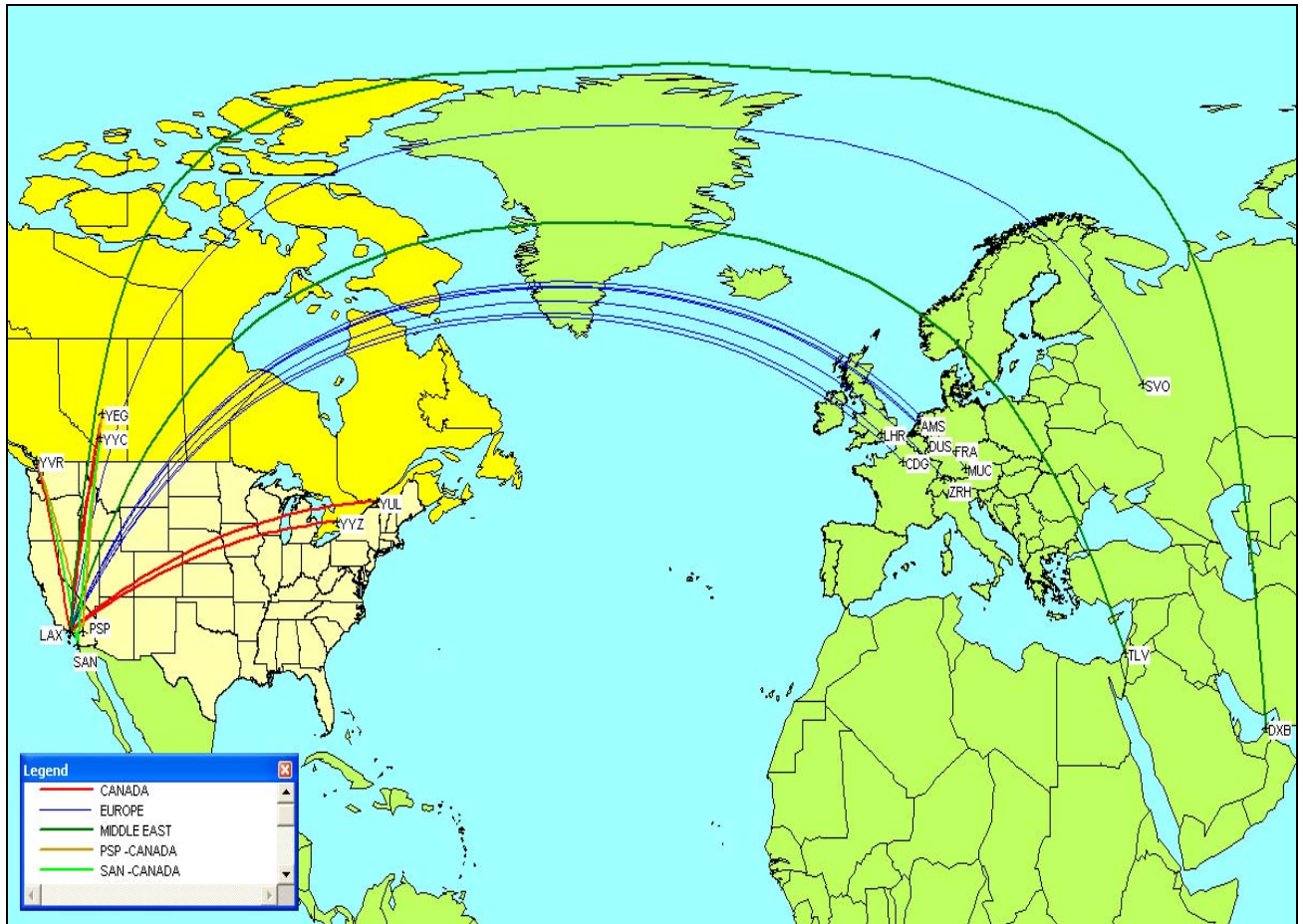
Based on Schedules Data

Changes in Airlines at LA Basin Airports
Comparing
1st Quarter 2009 to 2nd Quarter 2009

| Airport | New Airline | Lost Airline |
|---------|--------------------------------|---------------------|
| BUR | US - US Airways | |
| LAX | LT - LTU International Airways | |
| LAX | B6 - JetBlue Airways | |
| LAX | | JM - Air Jamaica |
| LAX | | UA - United for TED |
| LAX | YX - Midwest Airlines | |
| LGB | QX - Horizon Air | |
| ONT | | UA - United for TED |
| SAN | XJ - Mesaba Airlines | |
| SAN | FL - AirTran Airways | |
| SAN | | YV - Mesa Airlines |
| SAN | WS - WestJet | |
| SNA | VX - Virgin America | |

Based on Schedules Data

International Routes from LA Basin Airports (Canada, Europe and Middle East Regions) 2nd Quarter 2009



International Routes from LA Basin Airports (Caribbean, Central and South American Regions) 2nd Quarter 2009



International Routes from LA Basin Airports (Asia and Pacific Rim Regions) 2nd Quarter 2009

