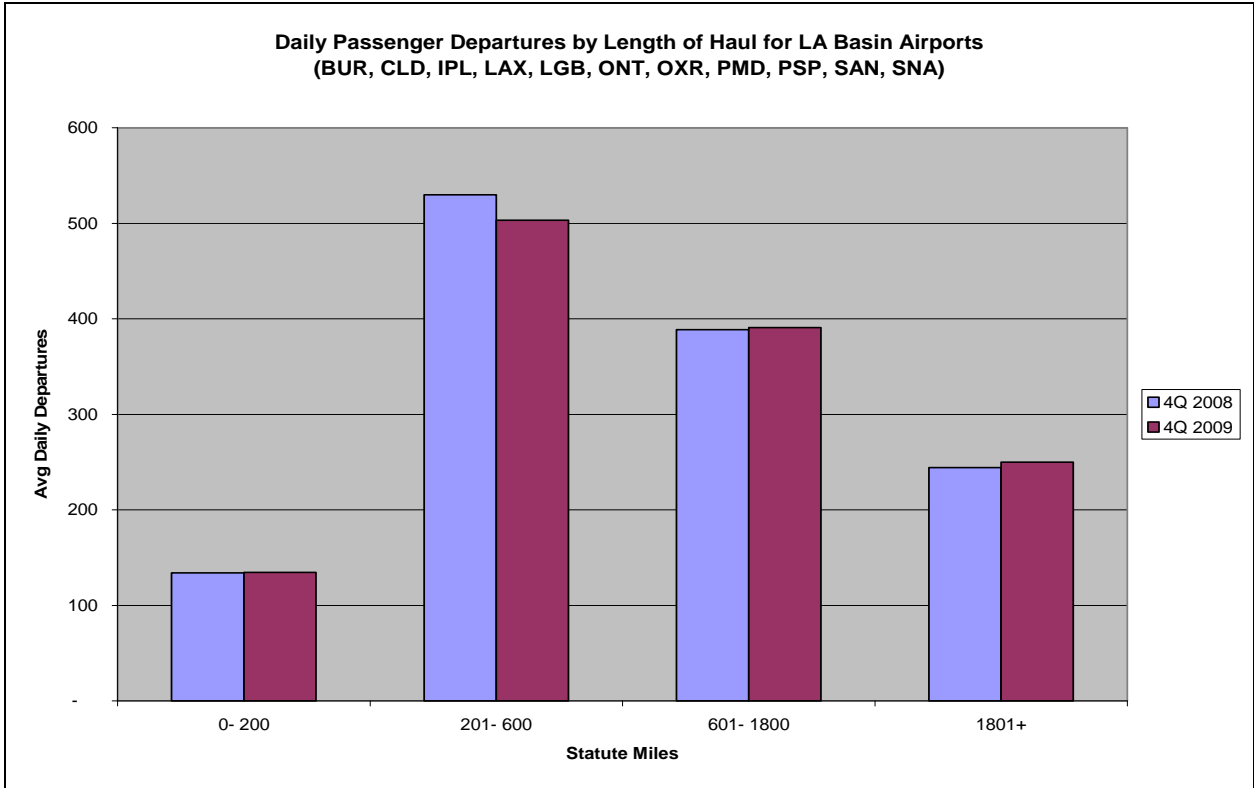


Quarterly Reports for
Southern California Association of
Governments (SCAG)

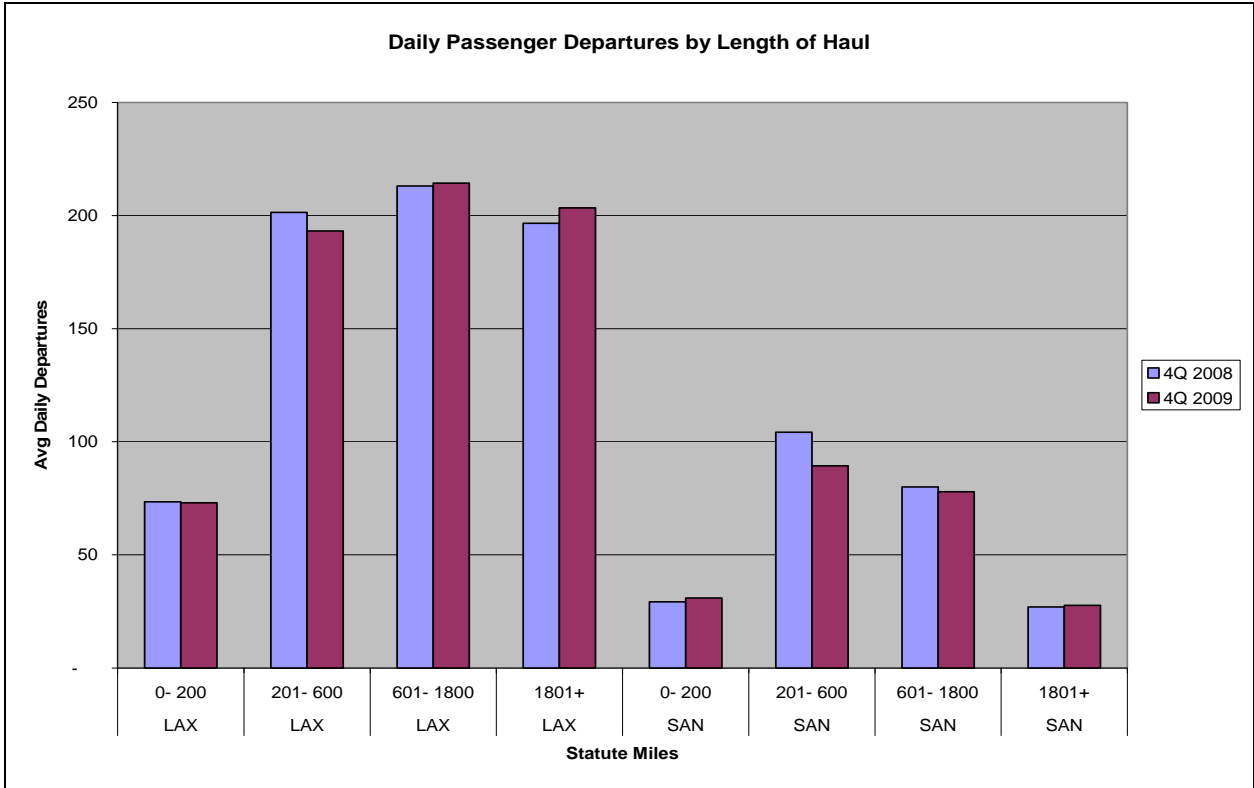
Produced by
OAG Aviation

4th Quarter 2009

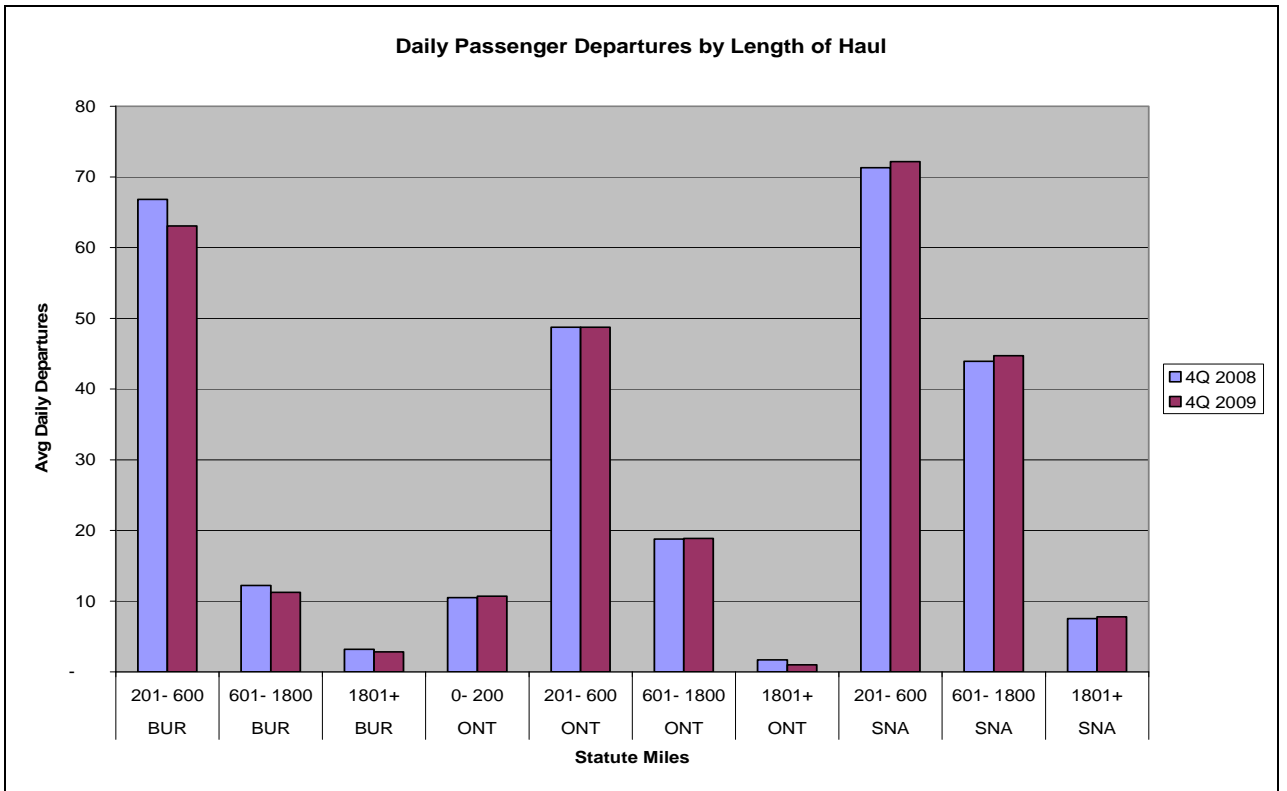


Based on Schedules Data

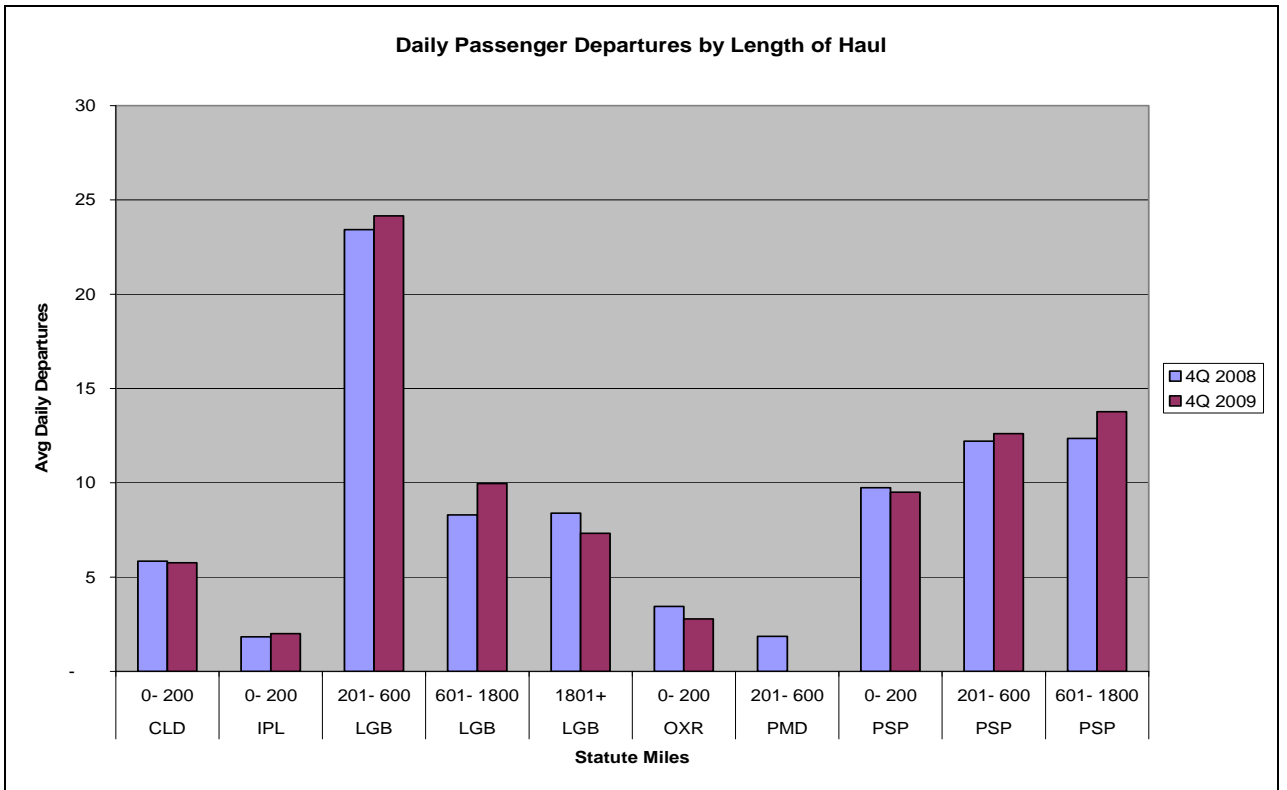
- BUR** – Burbank
- CLD** - Carlsbad (Palomar)
- IPL** - El Centro/Imperial
- LAX** - Los Angeles (Intl)
- LGB** - Long Beach
- ONT** - Ontario
- OXR** – Oxnard/Ventura
- PMD** - Palmdale/Lancaster
- PSP** - Palm Springs
- SAN** - San Diego (Intl)
- SNA** - Santa Ana (J. Wayne)



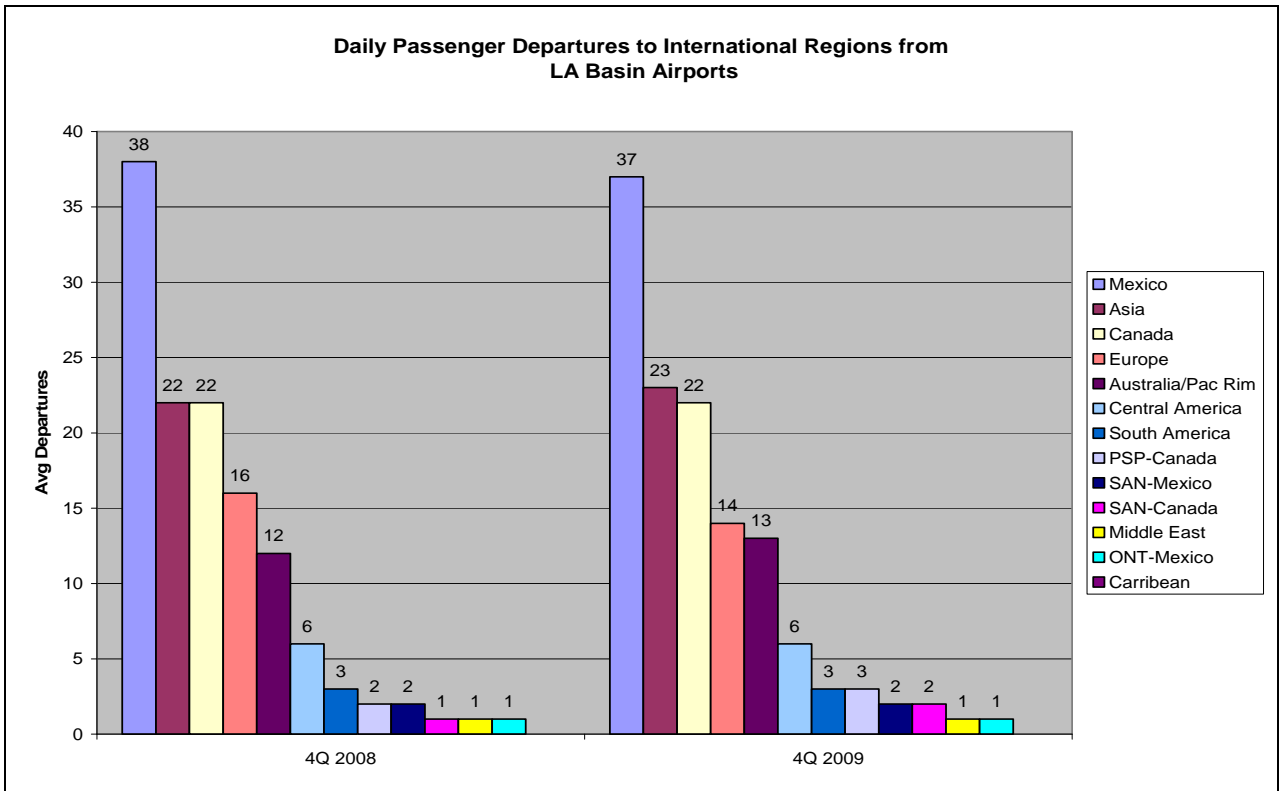
Based on Schedules Data



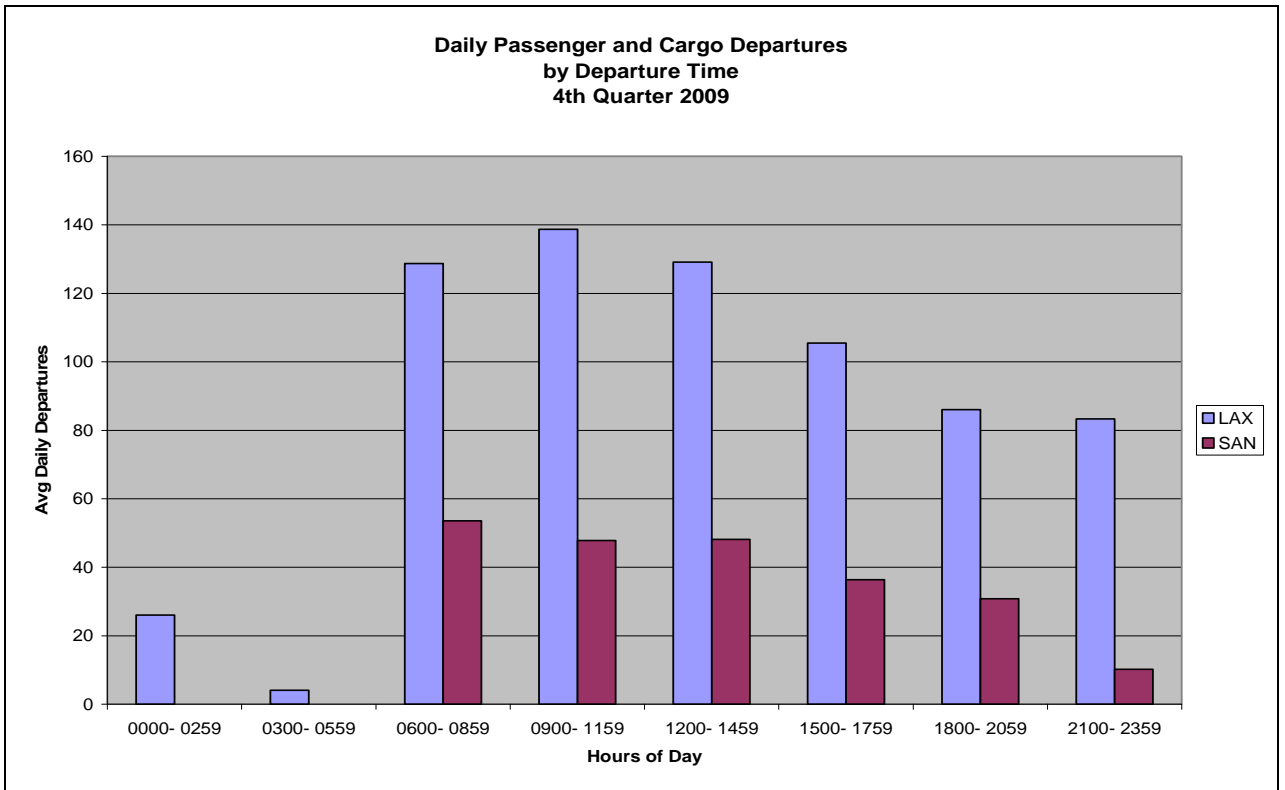
Based on Schedules Data



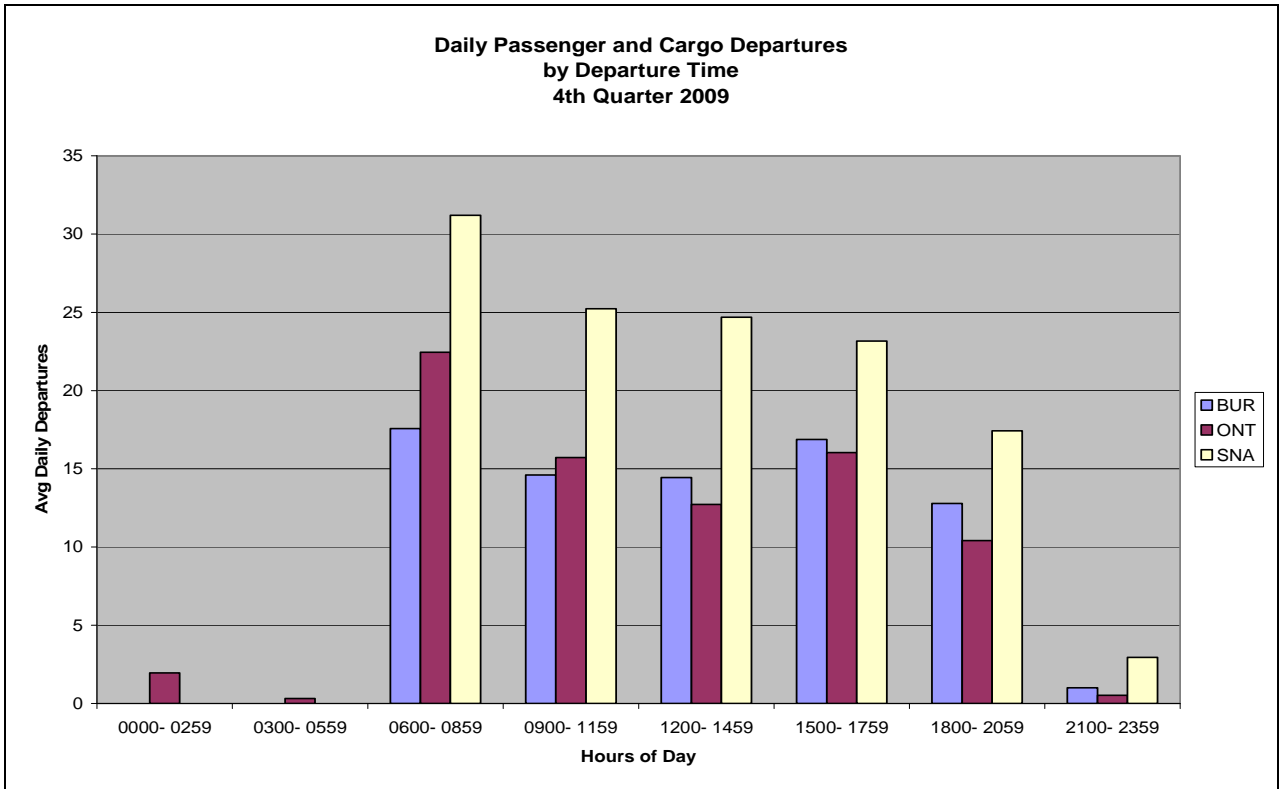
Based on Schedules Data



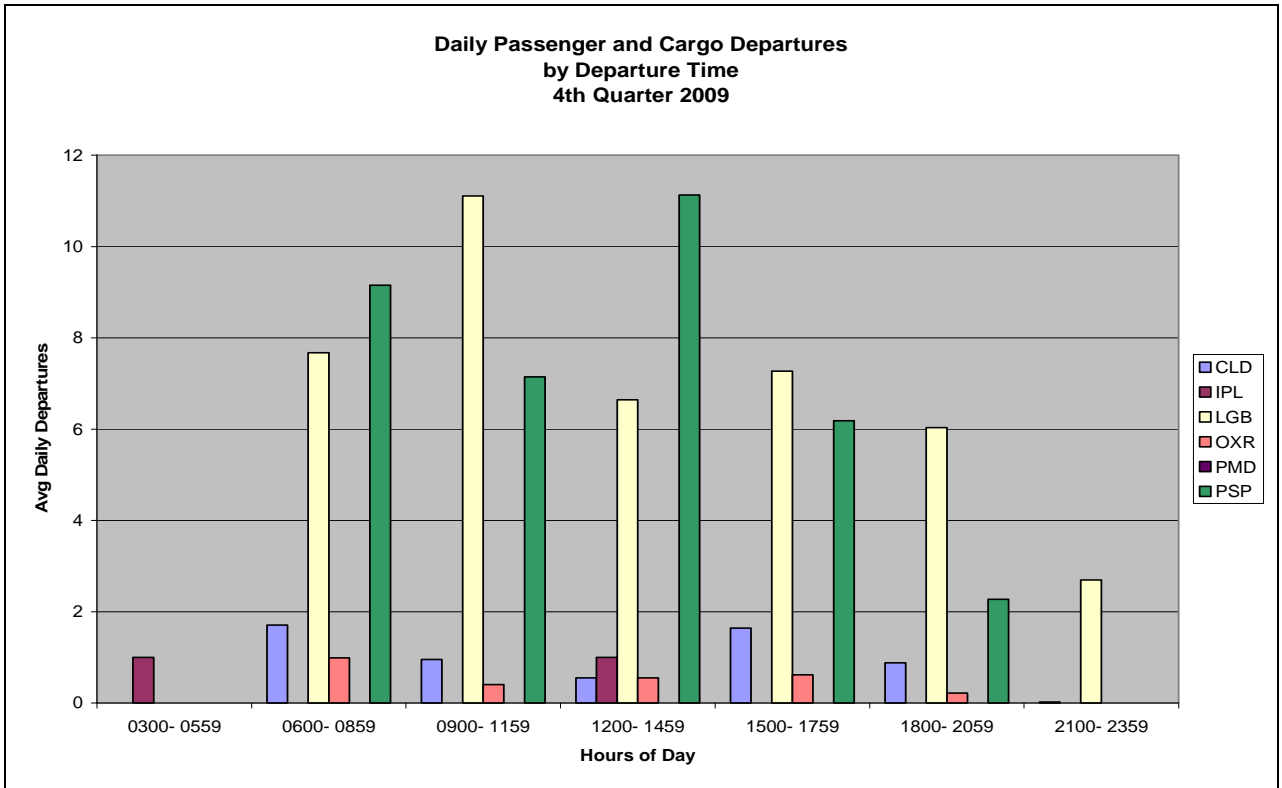
Based on Schedules Data



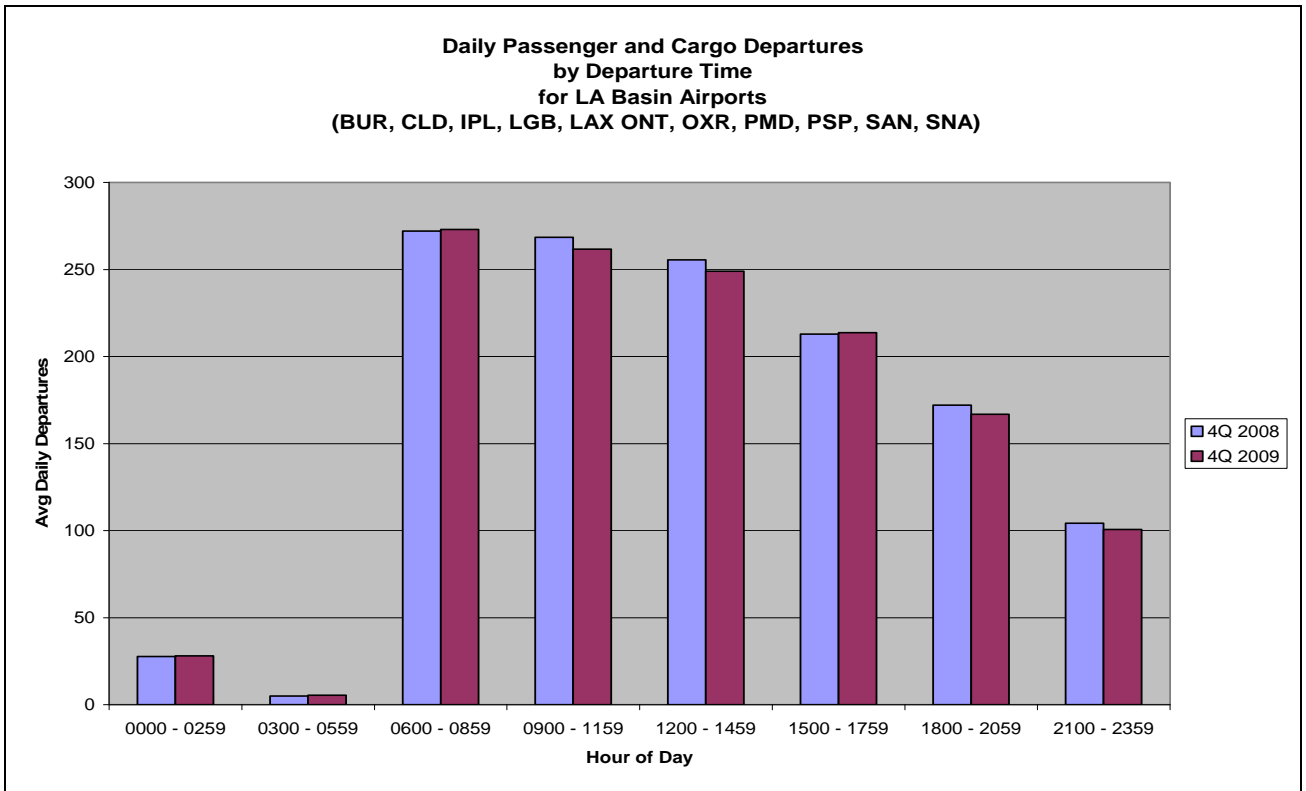
Based on Schedules Data



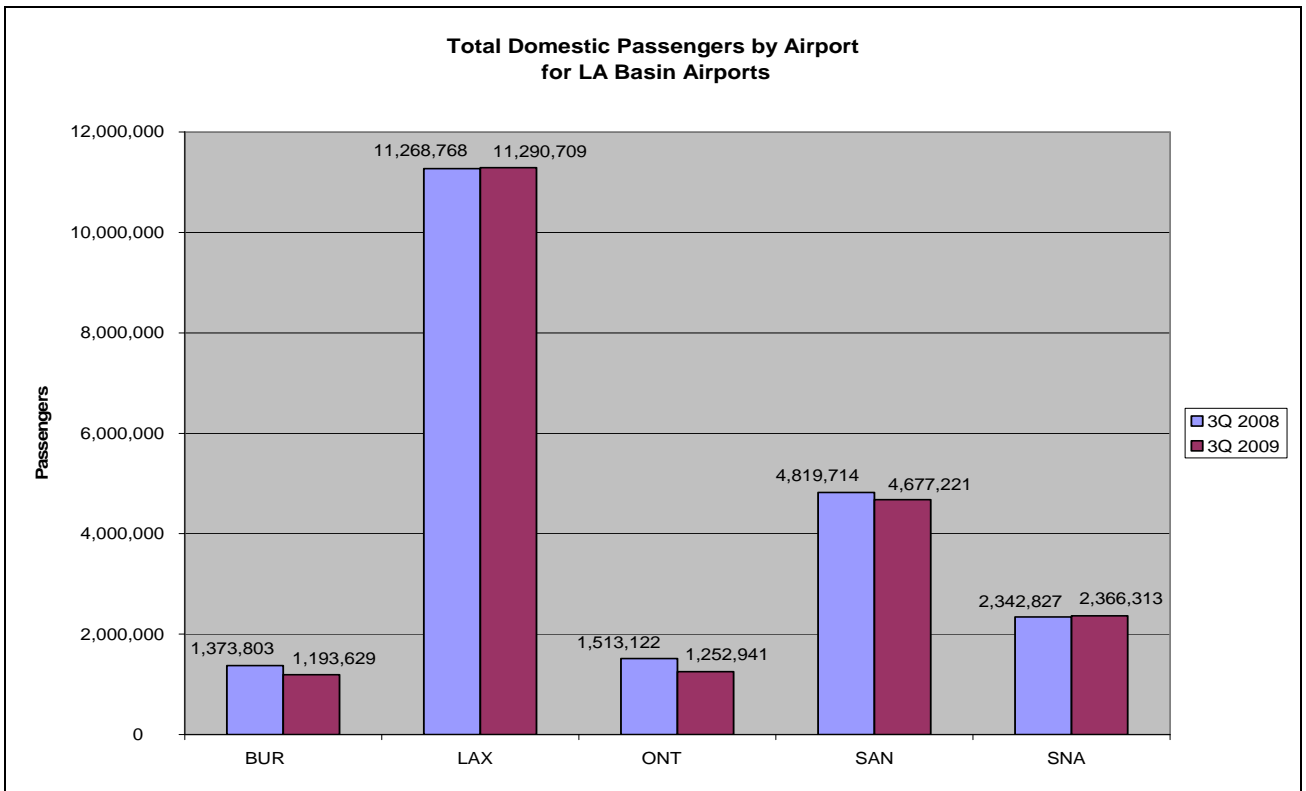
Based on Schedules Data



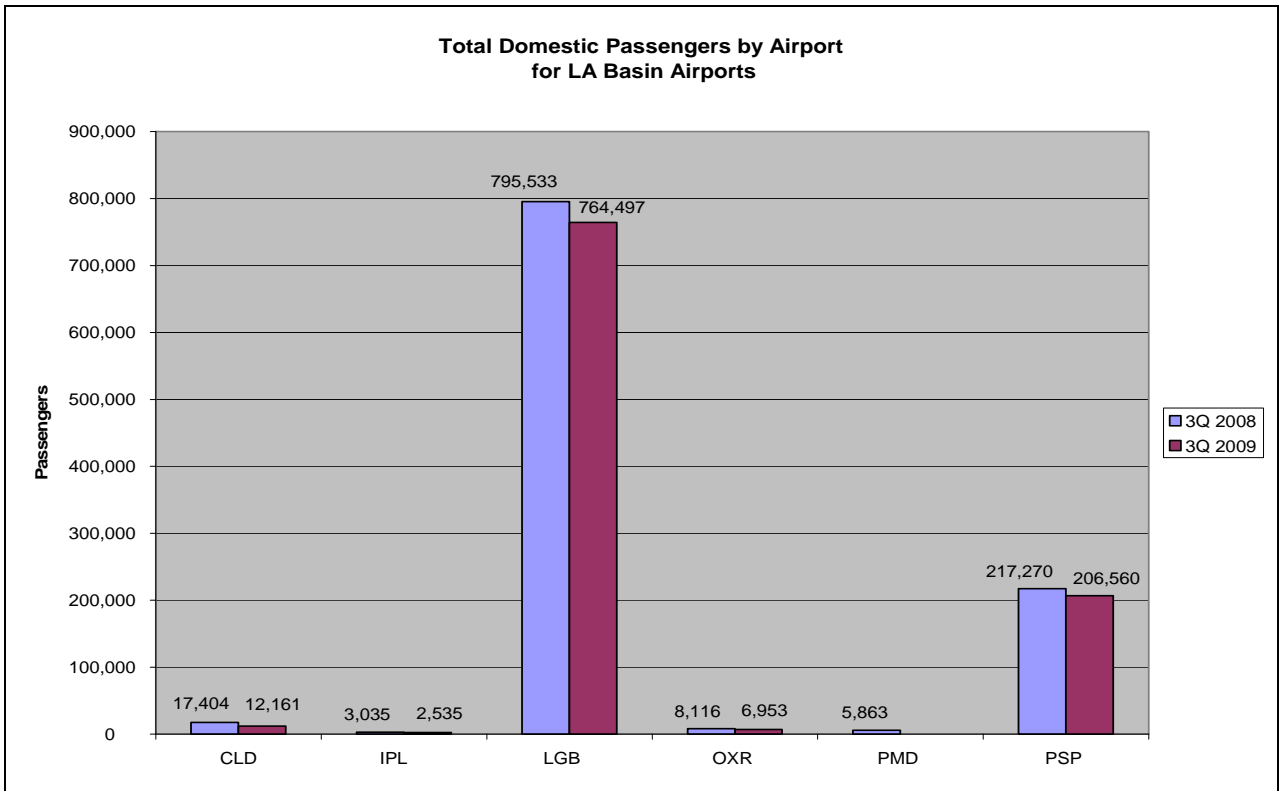
Based on Schedules Data



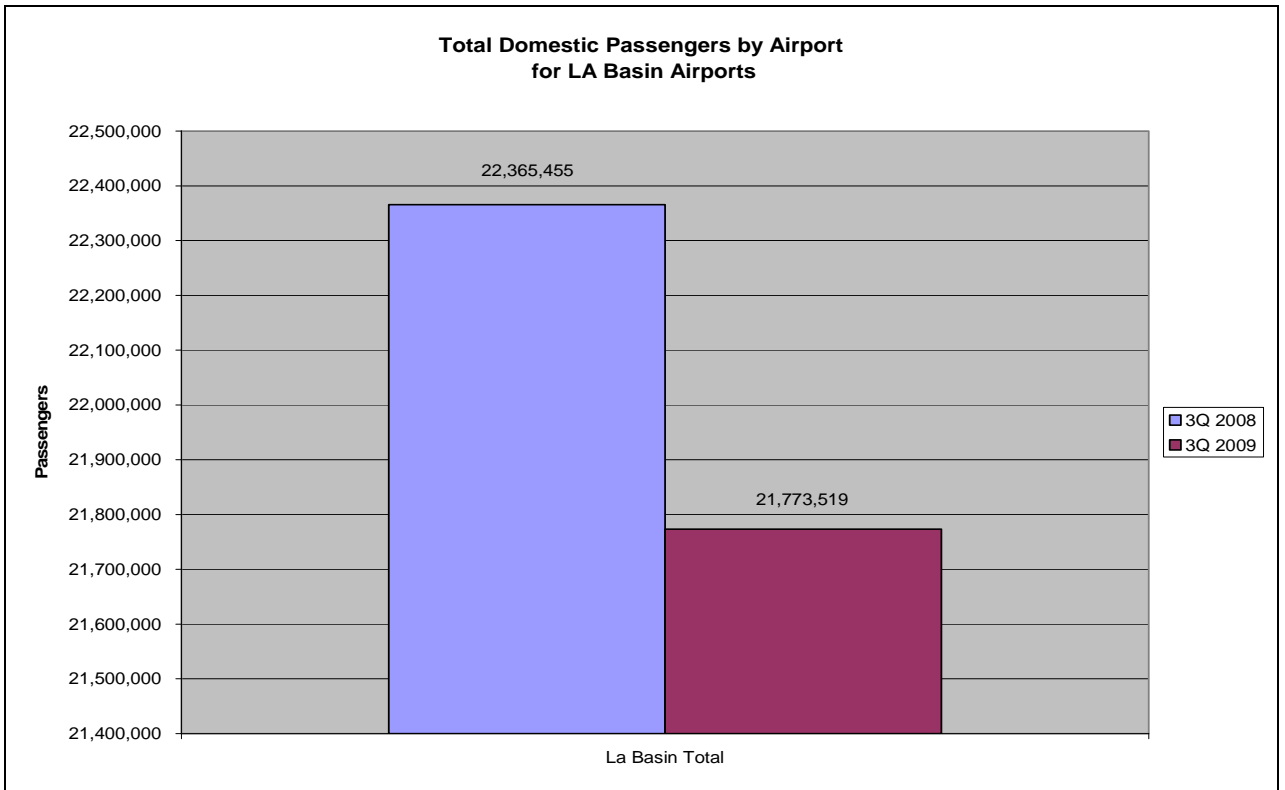
Based on Schedules Data



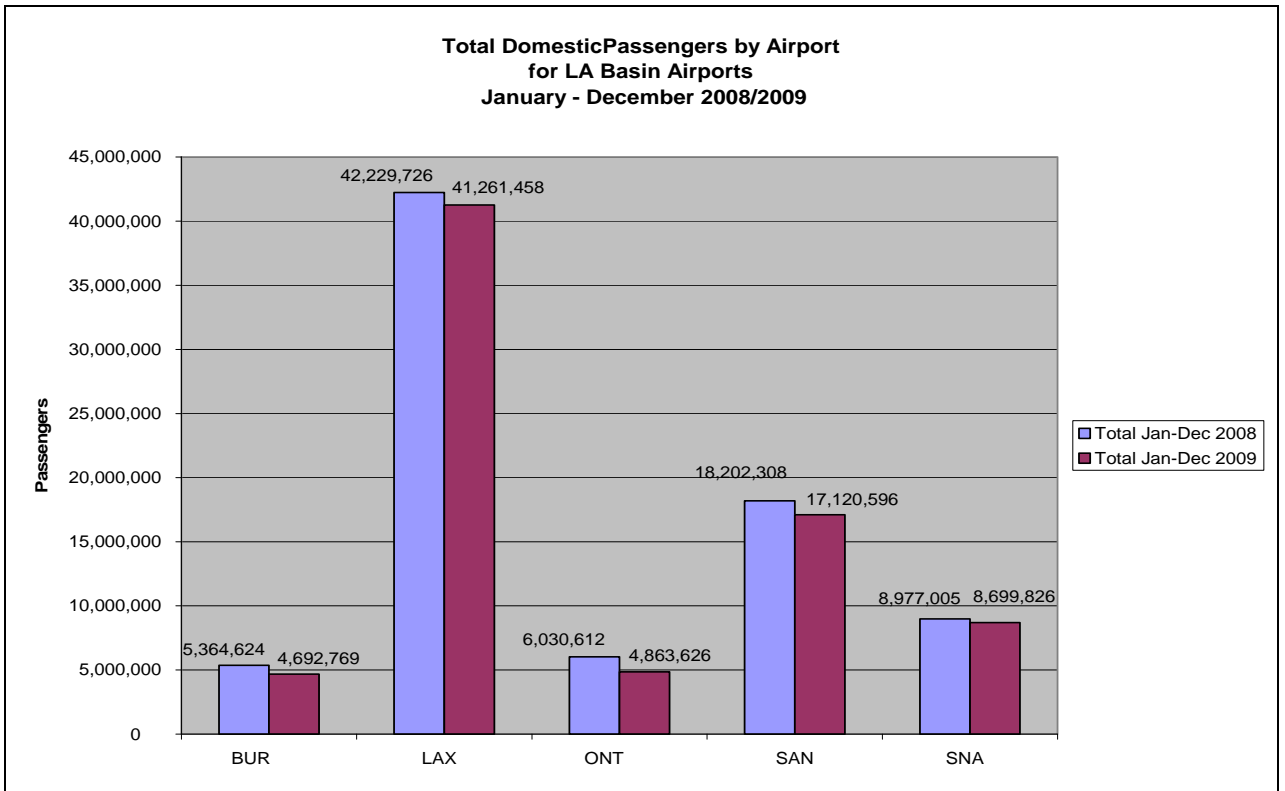
Based on DOT Traffic Data



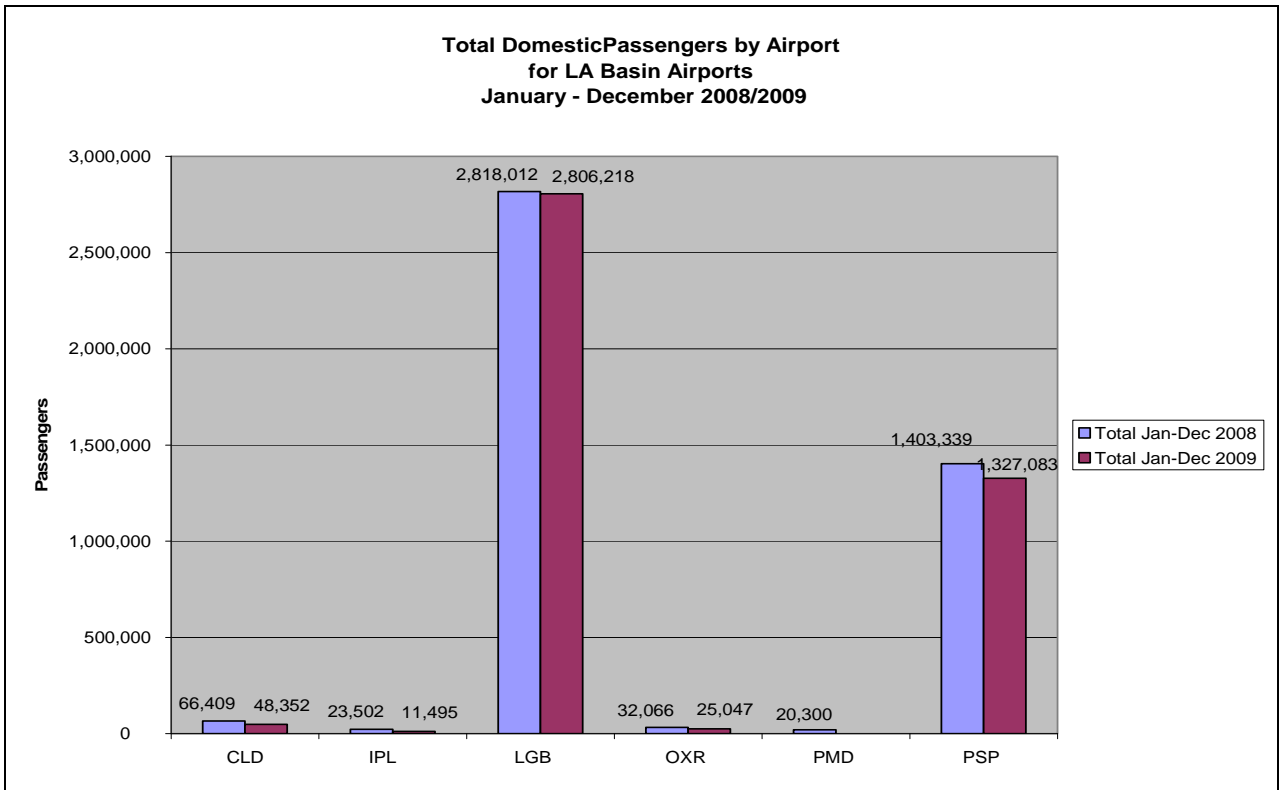
Based on DOT Traffic Data



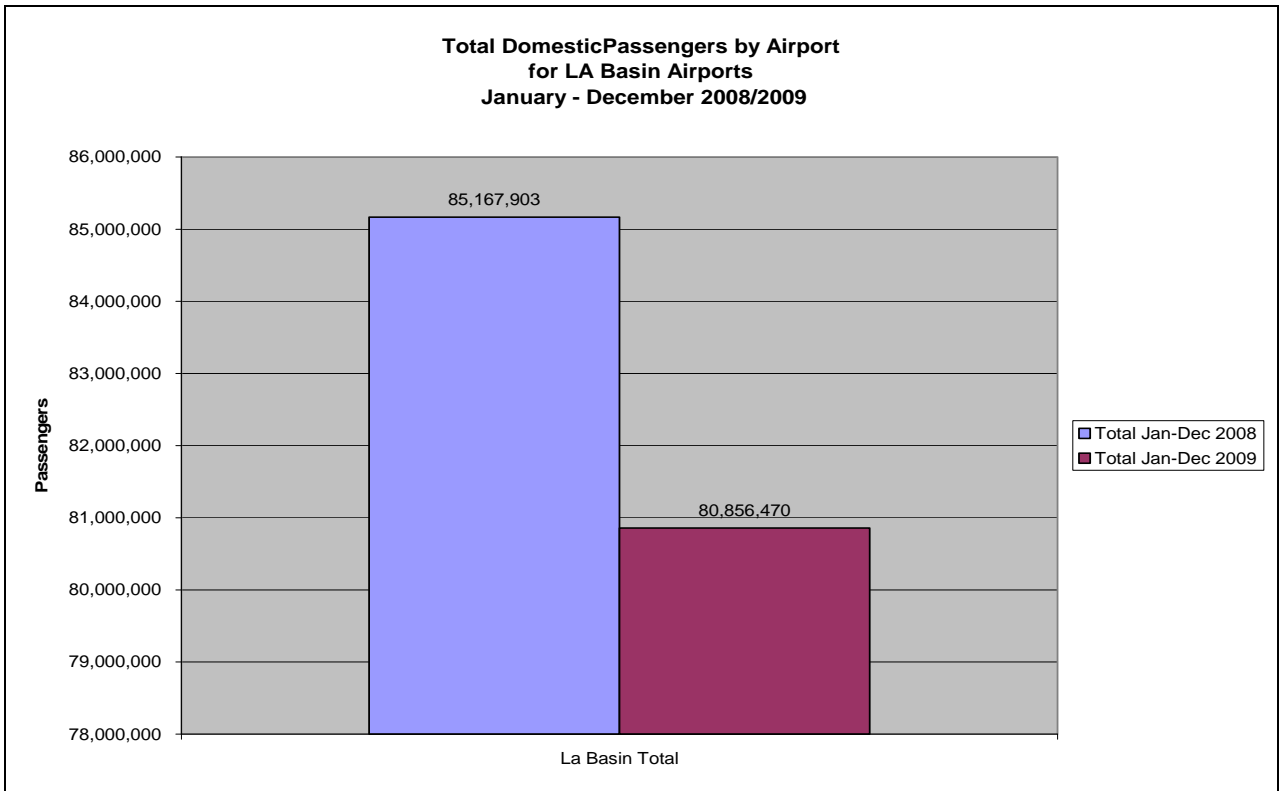
Based on DOT Traffic Data



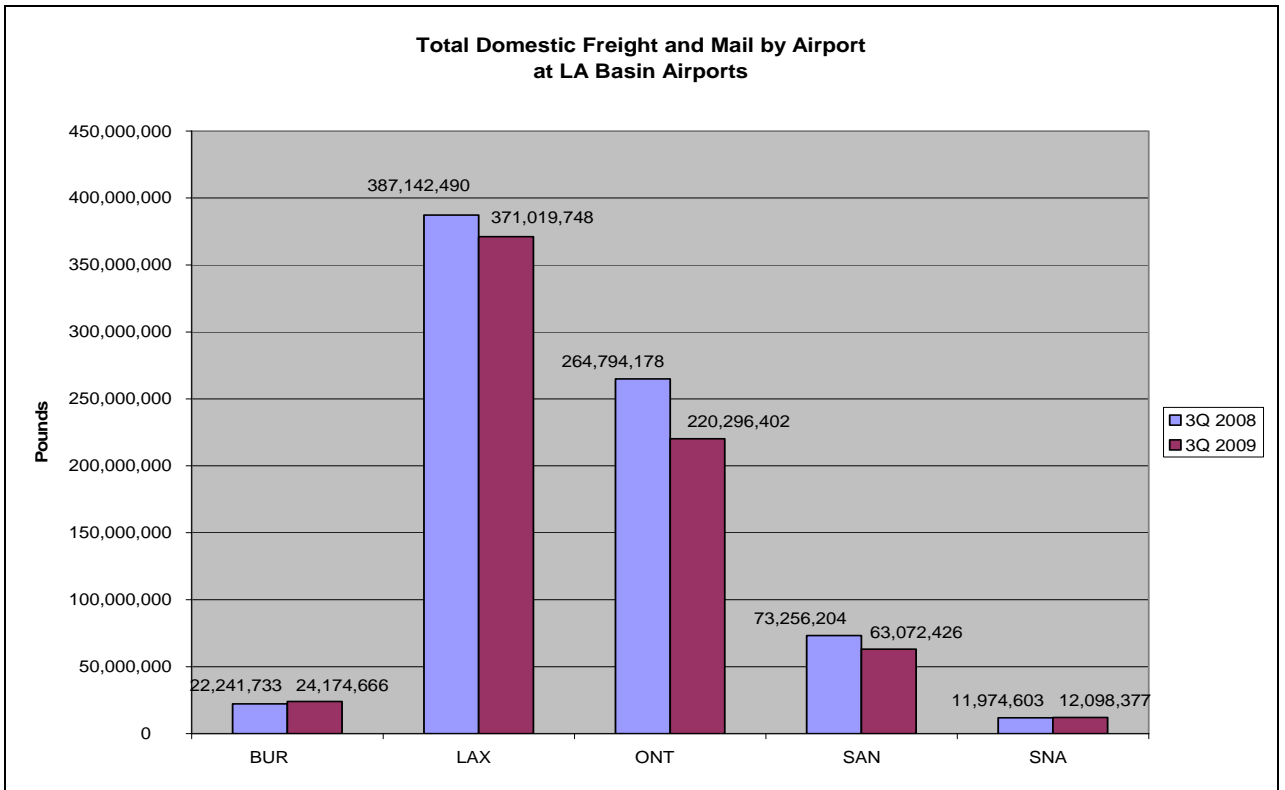
Based on DOT Traffic Data



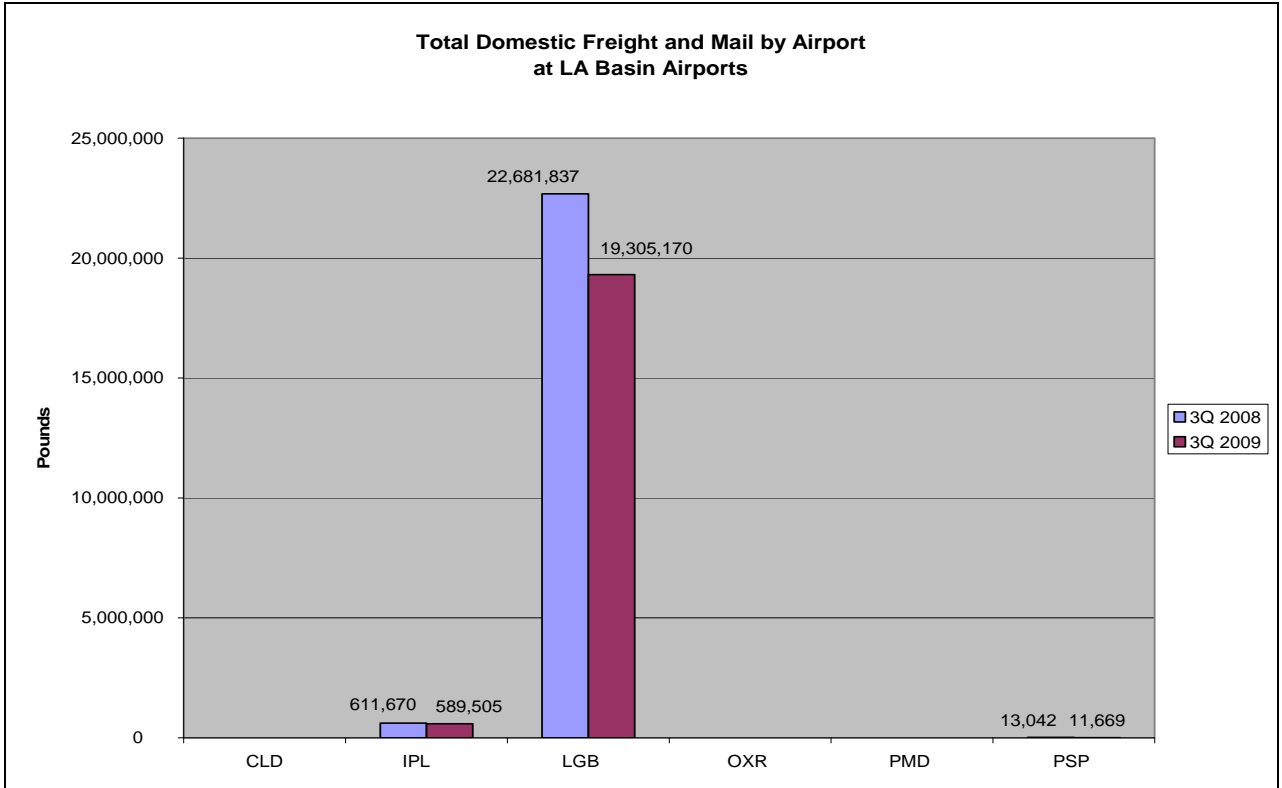
Based on DOT Traffic Data



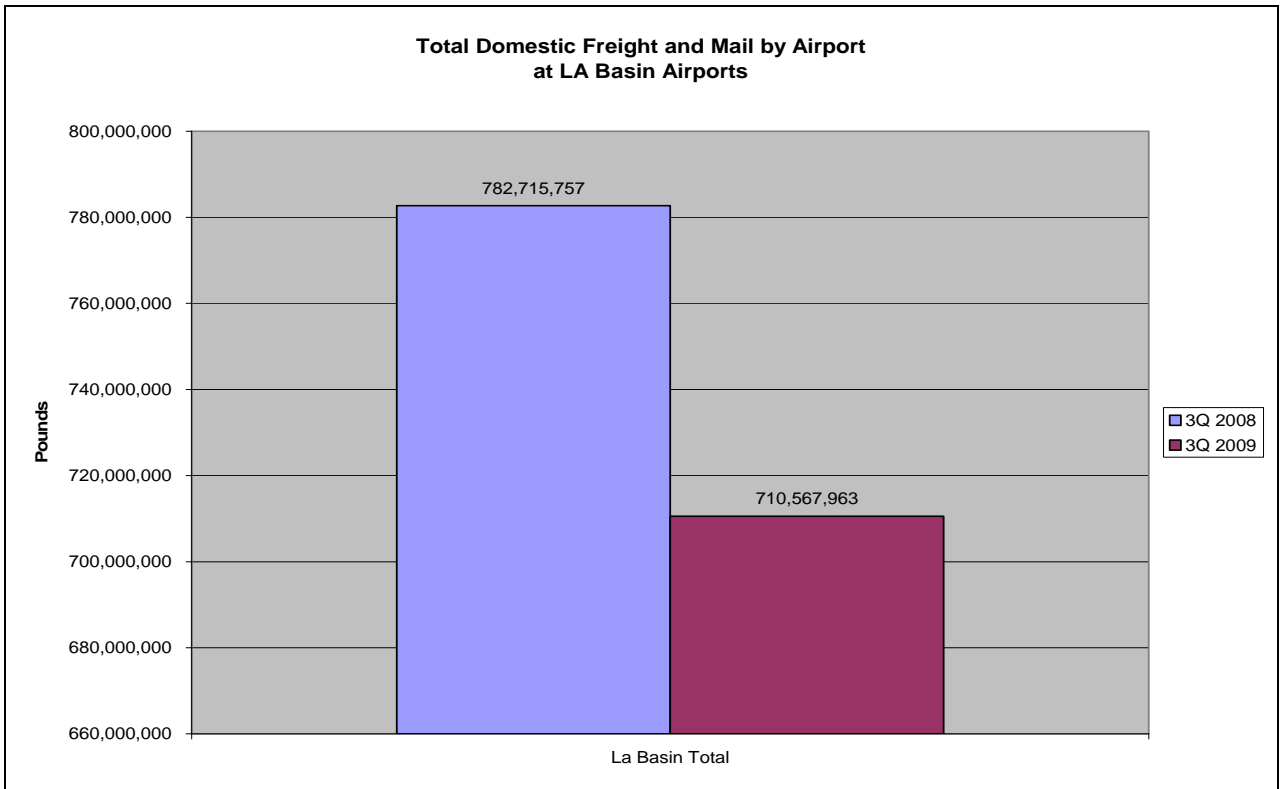
Based on DOT Traffic Data



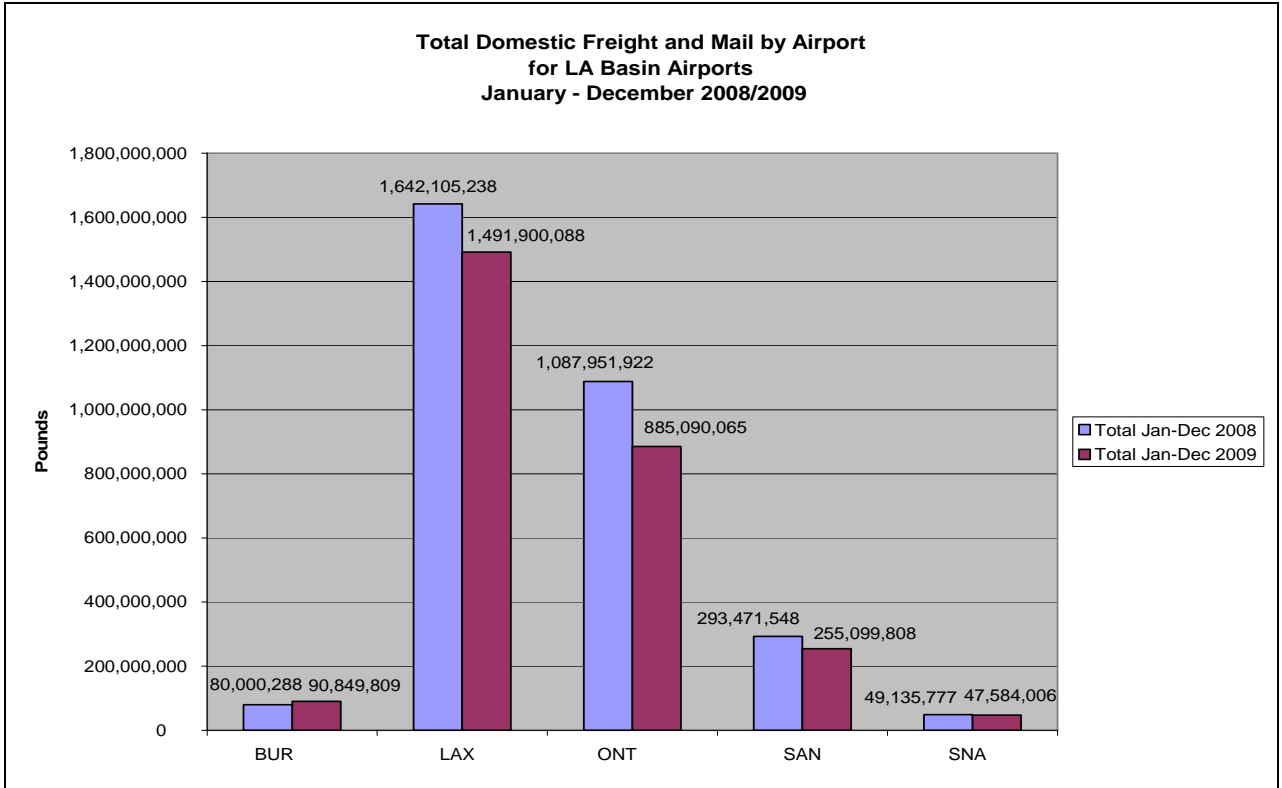
Based on DOT Traffic Data



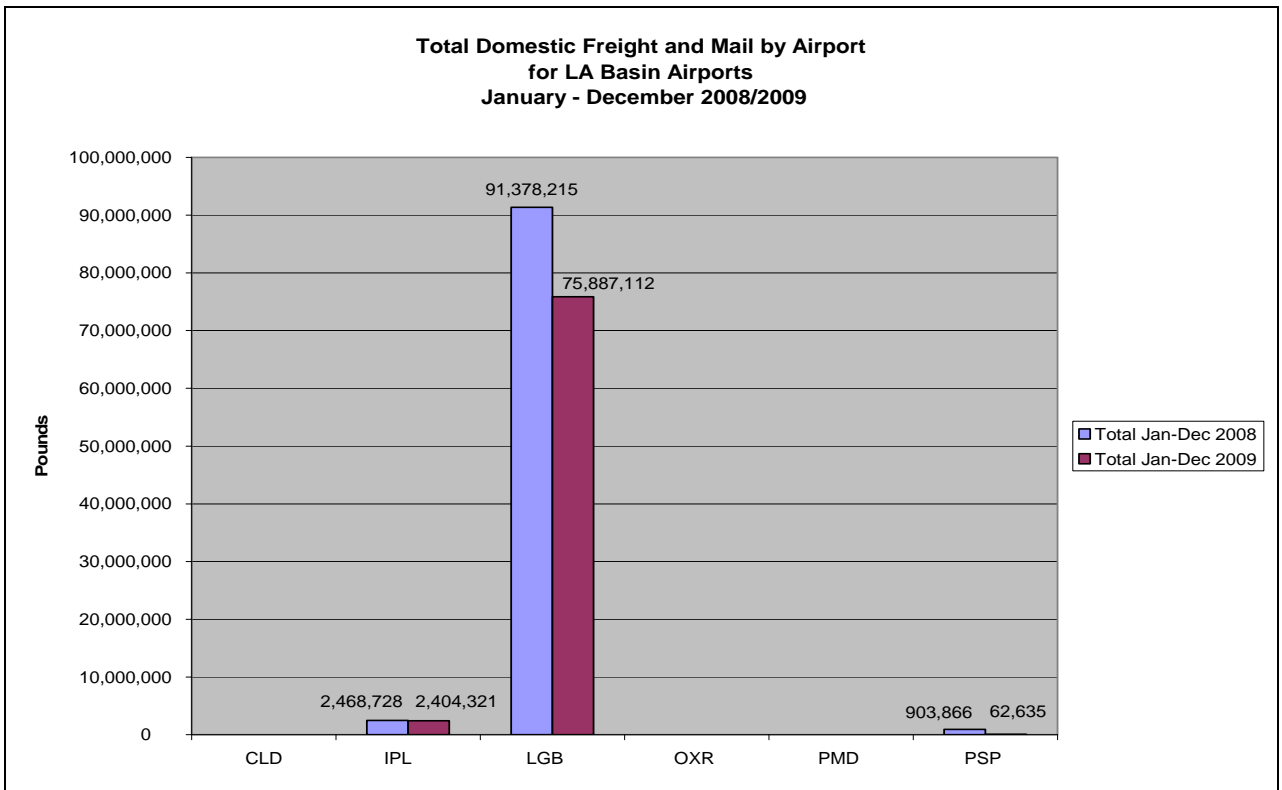
Based on DOT Traffic Data



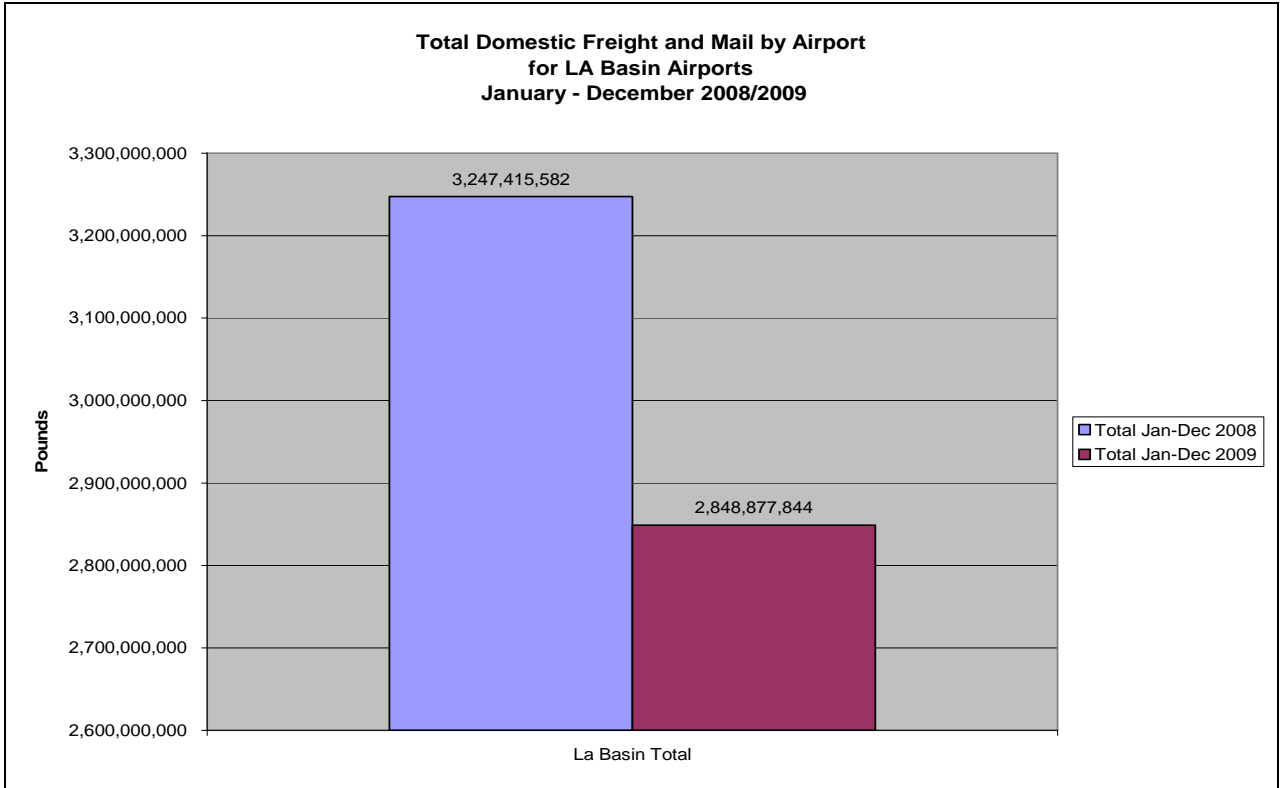
Based on DOT Traffic Data



Based on DOT Traffic Data



Based on DOT Traffic Data

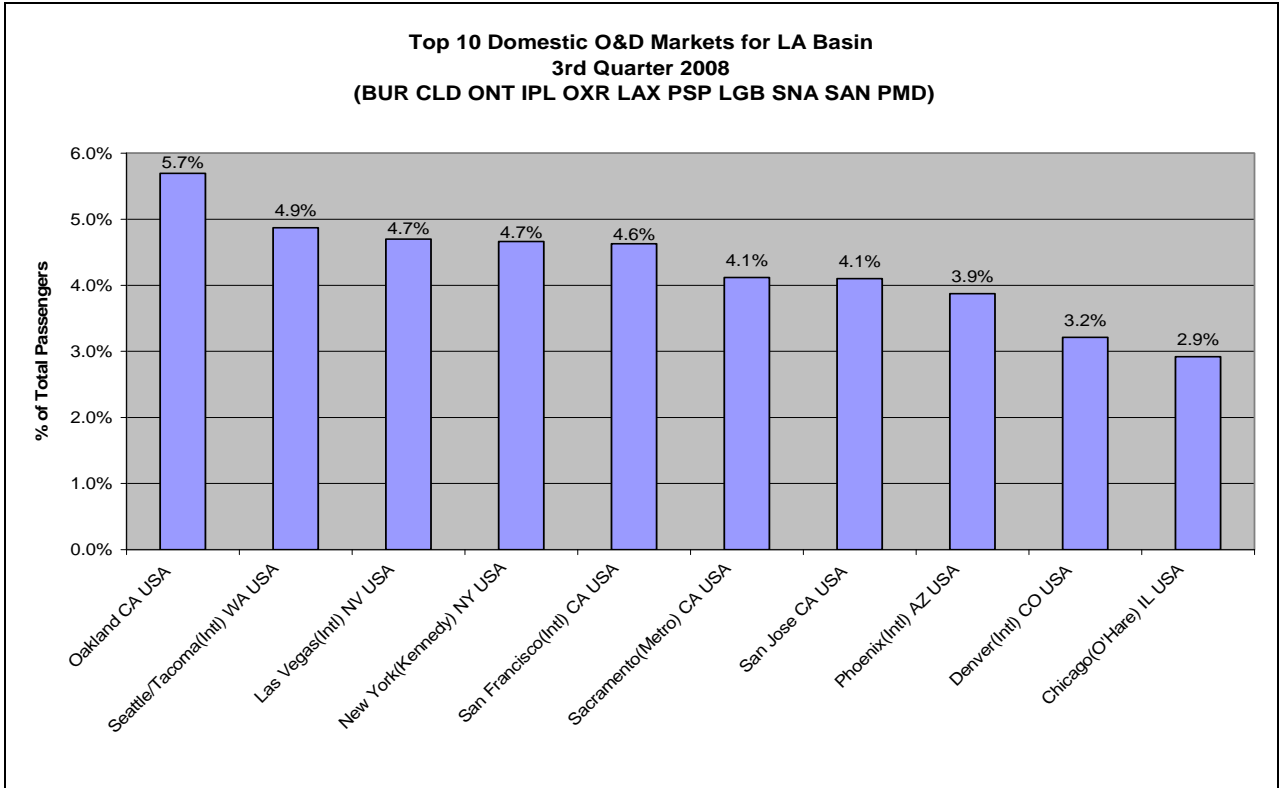


Based on DOT Traffic Data

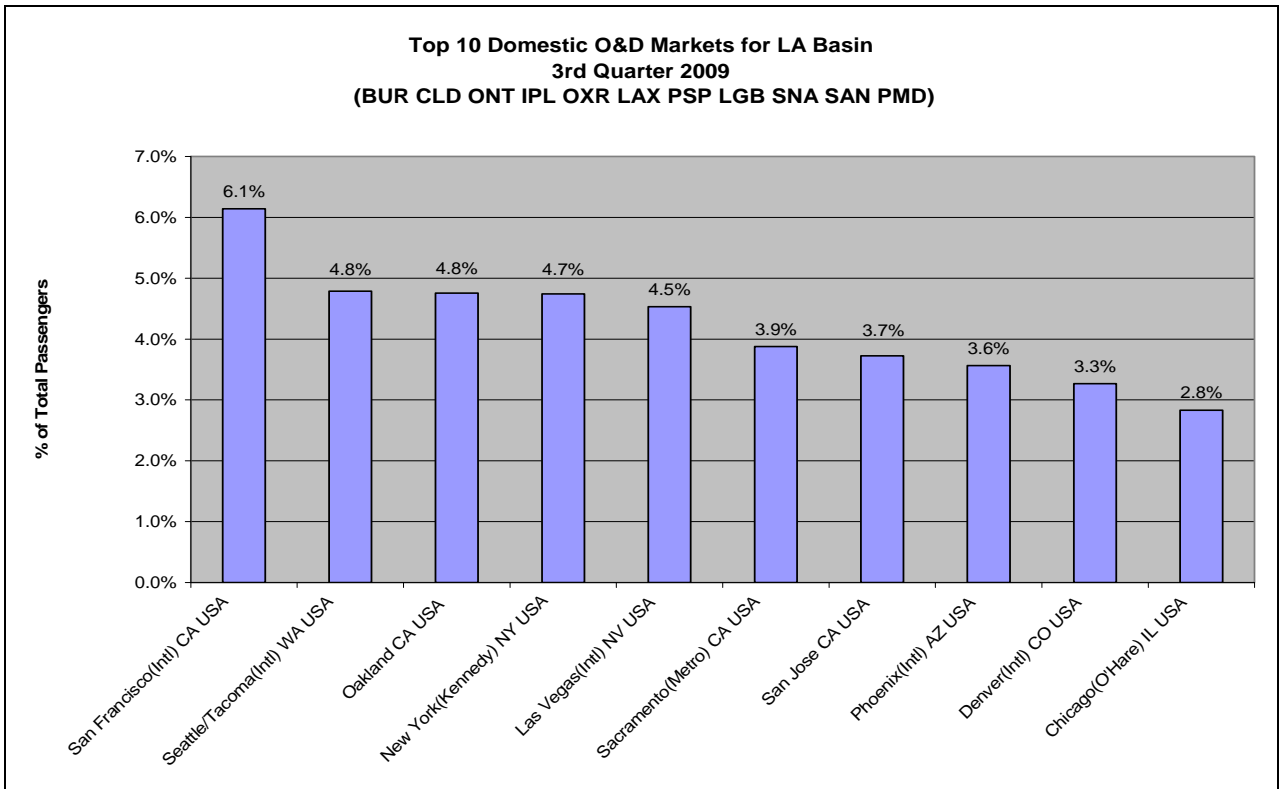
Total Available Seats
by Departure Airport and Total LA Basin

Origin Airport	4th Quarter 2008	4th Quarter 2009
LAX	8,795,535	8,815,027
SAN	2,841,491	2,674,232
SNA	1,441,224	1,471,618
BUR	942,628	867,425
ONT	903,041	842,248
LGB	448,409	440,990
PSP	253,736	270,869
CLD	16,110	15,900
OXR	9,510	7,680
IPL	5,040	5,520
PMD	5,100	-
Total	15,661,824	15,411,509

Based on Schedules Data

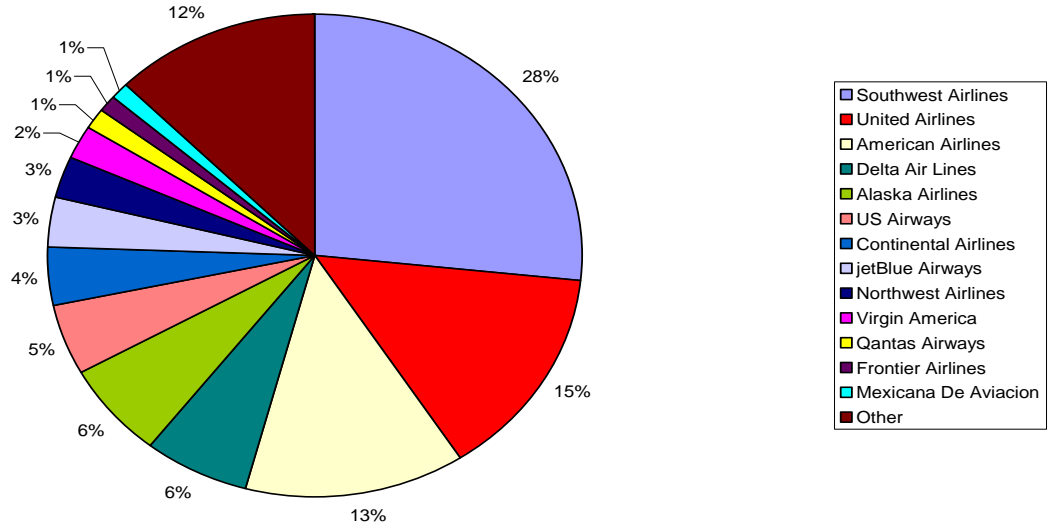


Based on DOT Traffic



Based on DOT Traffic

**Market Share by Departing Seats for LA Basin
4th Quarter 2009
(BUR CLD ONT IPL OXR LAX PSP LGB SAN SNA PMD)**



Based on Schedules Data

Domestic Load Factors by Airport and Total LA Basin
Narrow Body Aircraft

Origin Airport	Jan - Dec 2008	Jan - Dec 2009
BUR	66.46%	65.81%
LAX	77.17%	78.85%
LGB	78.32%	76.31%
ONT	70.33%	70.99%
PMD	42.00%	No Service
	<small>Allegiant Air Jan 08</small>	<small>Allegiant Air Stopped Reporting</small>
PSP	76.82%	75.95%
SAN	76.20%	78.45%
SNA	73.59%	73.10%
Total	75.17%	76.43%

Based on DOT Traffic Data

Domestic Load Factors by Airport and Total LA Basin
Regional and Turbo-Prop Aircraft

Origin Airport	Jan - Dec 2008	Jan - Dec 2009
BUR	78.09%	81.62%
CLD	48.12%	40.66%
IPL	40.42%	29.86%
LAX	70.20%	77.56%
LGB	74.18%	83.07%
ONT	73.37%	77.87%
OXR	41.88%	39.51%
PMD	33.56%	No Service <small>Skywest Stopped Reporting</small>
PSP	72.97%	76.06%
SAN	73.41%	81.47%
SNA	69.99%	77.29%
Total	71.00%	77.83%

Based on DOT Traffic Data

Domestic Load Factors by Airport and Total LA Basin
Widebody Aircraft

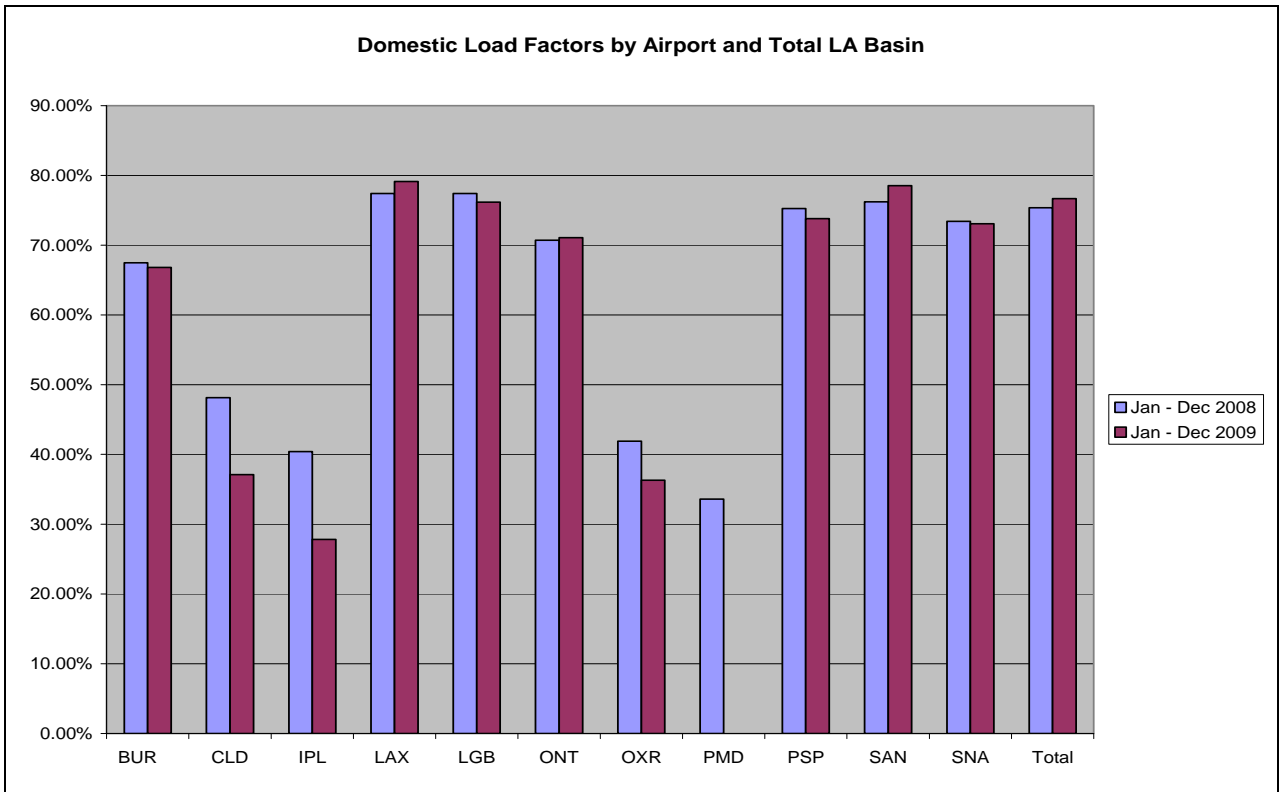
Origin Airport	Jan - Dec 2008	Jan - Dec 2009
BUR	14.22% <small>Pace Airline Flights in Aug08</small>	No Service
LAX	86.32%	95.70%
ONT	60.54%	87.05%
PSP	64.71% <small>Pace Airline Flights in Jan08</small>	No Service
SAN	84.45%	96.02%
Total	86.16%	95.72%

Based on DOT Traffic Data

Domestic Load Factors by Airport and Total LA Basin

Origin Airport	Jan - Dec 2008	Jan - Dec 2009
BUR	67.48%	66.81%
CLD	48.13%	37.11%
IPL	40.42%	27.83%
LAX	77.40%	79.12%
LGB	77.39%	76.16%
ONT	70.71%	71.08%
OXR	41.88%	36.32%
PMD	33.60%	No Service <small>Allegiant Air and Skywest Stopped Reporting</small>
PSP	75.27%	73.80%
SAN	76.20%	78.51%
SNA	73.40%	73.05%
Total	75.37%	76.67%

Based on DOT Traffic Data



Based on DOT Traffic Data

New Non-Stop Routes from LA Basin Airports
Comparing
3rd Quarter 2009 to 4th Quarter 2009

Origin Airport	Destination Airport	Operating Carrier
LAX	Denver(Intl) CO	Republic Airline
LAX	Edmonton(Intl) AB Canada	Air Canada
LAX	El Paso TX	UA EXP/Skywest
LAX	Frankfurt Germany	Lufthansa German Airlines
LAX	Ft. Lauderdale(Intl) FL	Virgin America
LAX	Mammoth Lakes CA	Horizon Air
LAX	Melbourne(Intl) VI Australia	Vaustralia
LAX	Milwaukee WI	Frontier Airlines
LAX	Morelia Mexico	Volaris
LAX	Santa Fe NM	American Eagle
LAX	Santiago(Intl) Chile	Lan Airlines
LAX	Sun Valley ID	Horizon Air
LAX	Vail/Eagle CO	American Airlines
LAX	Zacatecas Mexico	Volaris
ONT	Denver(Intl) CO	UA EXP/Skywest
PSP	Denver(Intl) CO	United Airlines
PSP	Edmonton(Intl) AB Canada	WestJet
PSP	Minneapolis/St. Paul(Intl) MN	Northwest Airlines
PSP	Minneapolis/St. Paul(Intl) MN	Sun Country Airlines
PSP	Portland OR	Alaska Airlines
PSP	Vancouver(Intl) BC Canada	WestJet

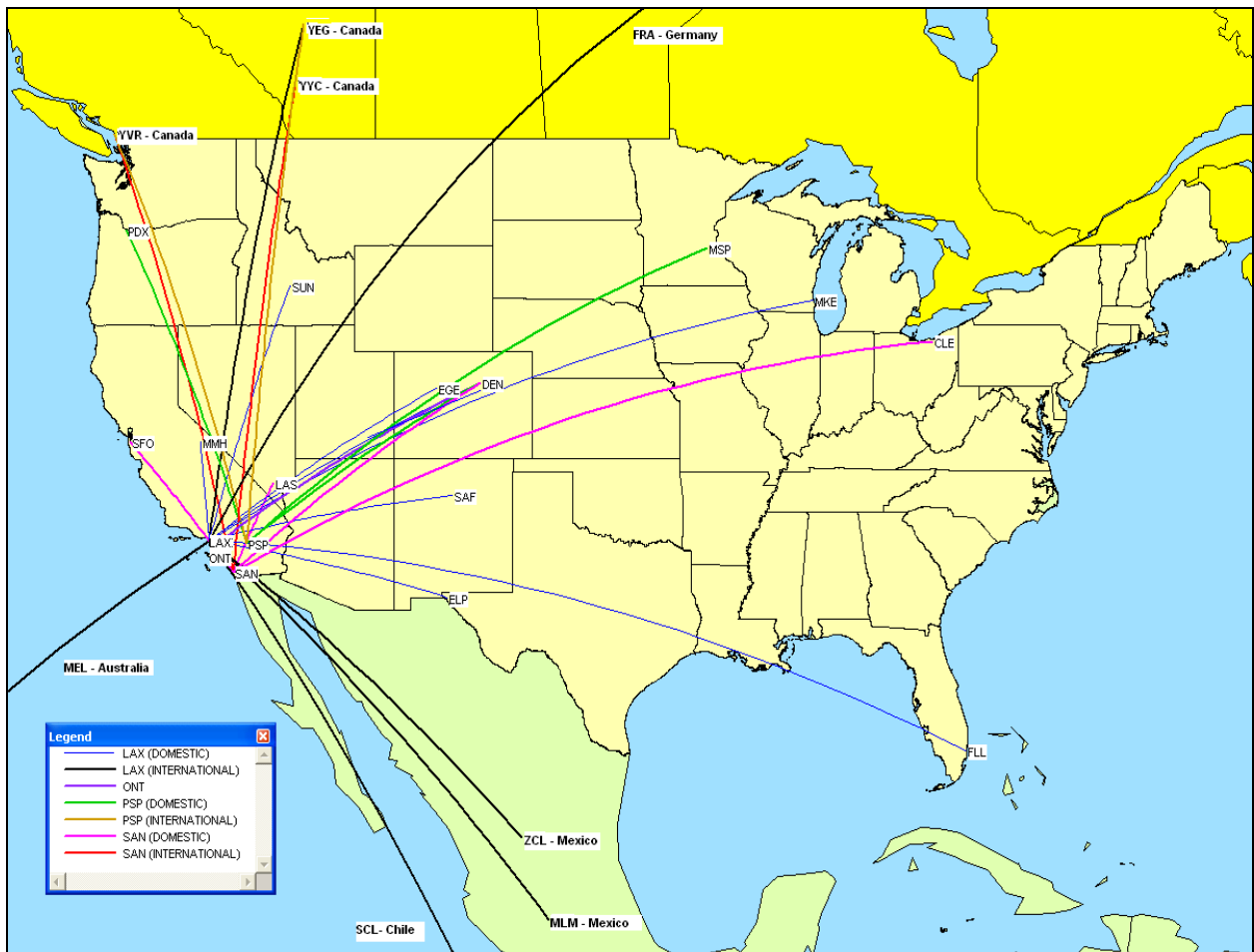
Based on Schedules Data

New Non-Stop Routes from LA Basin Airports
Comparing
3rd Quarter 2009 to 4th Quarter 2009

Origin Airport	Destination Airport	Operating Carrier
SAN	Calgary AB Canada	Air Canada
SAN	Cleveland(Intl) OH USA	Continental Airlines
SAN	Denver(Intl) CO USA	Republic Airline
SAN	Denver(Intl) CO USA	UA EXP/Skywest
SAN	Las Vegas(Intl) NV USA	Mesa Airlines
SAN	San Francisco(Intl) CA USA	UA EXP/Skywest
SAN	Vancouver(Intl) BC Canada	Air Canada

Based on Schedules Data

New Non-Stop Routes from LA Basin Airports Comparing 3rd Quarter 2009 to 4th Quarter 2009



Lost Non-Stop Routes from LA Basin Airports
Comparing
3rd Quarter 2009 to 4th Quarter 2009

Origin Airport	Destination Airport	Operating Carrier
LAX	Aguascalientes Mexico	Aeromexico
LAX	Anchorage(Intl) AK	Alaska Airlines
LAX	Monterey CA	Allegiant Air
LAX	Pittsburgh(Intl) PA	US Airways
LAX	Portland OR	Horizon Air
LAX	San Francisco(Intl) CA	United Airlines
LAX	San Salvador El Salvador	Continental Airlines
LAX	St. George UT	UA EXP/Skywest
LGB	Portland OR	Alaska Airlines
ONT	Salt Lake City UT	Delta Air Lines
SAN	Milwaukee WI	AirTran Airways
SAN	San Jose CA	American Eagle
SAN	Seattle/Tacoma(Intl) WA	jetBlue Airways

Based on Schedules Data

Changes in Aircraft Type at LA Basin Airports
Comparing
3rd Quarter 2009 to 4th Quarter 2009

Airport	New Aircraft	Lost Aircraft
LAX		BOEING 717-200
LAX	EMBRAER 170	
ONT	BOEING 757-200	
ONT		MCDONNELL DOUGLAS MD-90
PSP	AIRBUS INDUSTRIE A319	
PSP	AIRBUS INDUSTRIE A320	
PSP	BOEING 737-600	
PSP	BOEING 737-800	
PSP		DE HAVILLAND DHC8 DASH 8
SAN	BOEING 737-600	
SAN	EMBRAER 190	

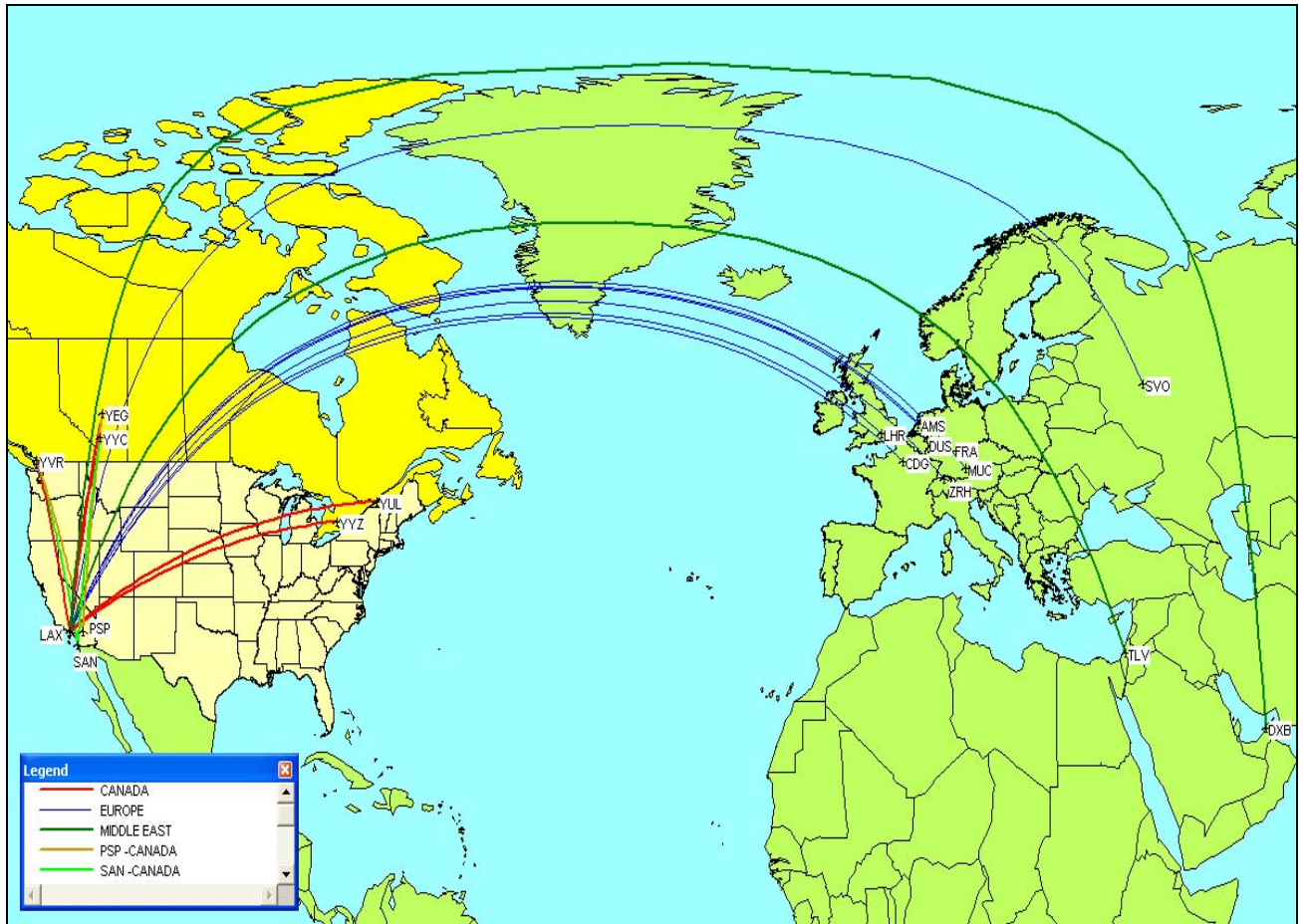
Based on Schedules Data

Changes in Airlines at LA Basin Airports
 Comparing
 3rd Quarter 2009 to 4th Quarter 2009

Airport	New Airline	Lost Airline
LAX	Republic Airline	
PSP	Northwest Airlines	
PSP	Sun Country Airlines	
PSP	United Airlines	
SAN	Air Canada	
SAN	Mesa Airlines	
SAN	Republic Airline	

Based on Schedules Data

International Routes from LA Basin Airports (Canada, Europe and Middle East Regions) 4th Quarter 2009



International Routes from LA Basin Airports (Caribbean, Central and South American Regions) 4th Quarter 2009



International Routes from LA Basin Airports (Asia and Pacific Rim Regions) 4th Quarter 2009

