

Forecast LA 2016

Loyola Marymount University

Fernando J. Guerra, Ph.D.

THOMAS & DOROTHY LEAVEY CENTER FOR THE STUDY OF LOS ANGELES
LOYOLA MARYMOUNT UNIVERSITY

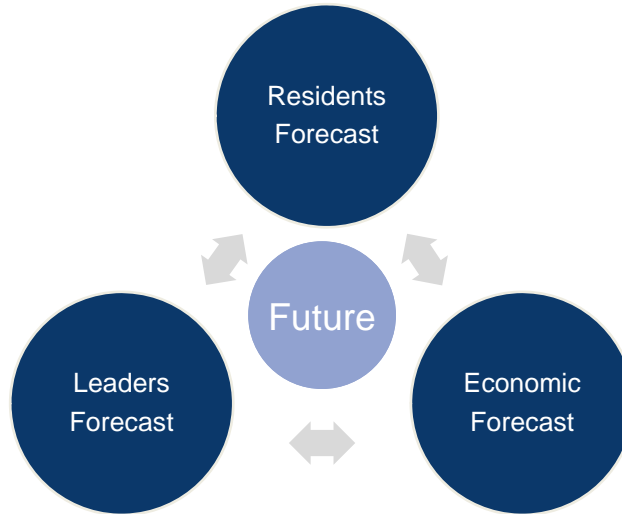
Third annual Forecast LA Public Opinion Survey

- Largest annual social survey in the region
- 2,425 Los Angeles County residents interviewed
- Interviews of 20 minutes conducted Jan. 4-Feb. 13, 2016
- Interviews conducted in English, Spanish, Mandarin, & Korean
- Significant demographic & geographic groups oversampled
- The only systemic survey of leadership in the region

THOMAS & DOROTHY LEAVEY CENTER FOR THE STUDY OF LOS ANGELES
LOYOLA MARYMOUNT UNIVERSITY

2

The Forecast LA approach: “triad of information”



THOMAS & DOROTHY LEAVEY CENTER FOR THE STUDY OF LOS ANGELES
LOYOLA MARYMOUNT UNIVERSITY

3

Forecast LA now consists of six independent studies

- 2016 Los Angeles Public Opinion Survey
- 2015 Los Angeles Public Opinion Survey
- 2014 Los Angeles Public Opinion Survey

- 2016 Leaders Survey of Los Angeles:
Superintendents of Los Angeles County
- 2015 Leaders Survey of Los Angeles:
City Managers of Los Angeles County
- 2014 Leaders Survey of Los Angeles:
Mayors of Los Angeles County

THOMAS & DOROTHY LEAVEY CENTER FOR THE STUDY OF LOS ANGELES
LOYOLA MARYMOUNT UNIVERSITY

4

A note about how data are presented

- 2014 data will be represented in green
- 2015 data will be represented in orange
- 2016 data will be represented in blue

Data should be read from left to right and from top to bottom unless specified otherwise

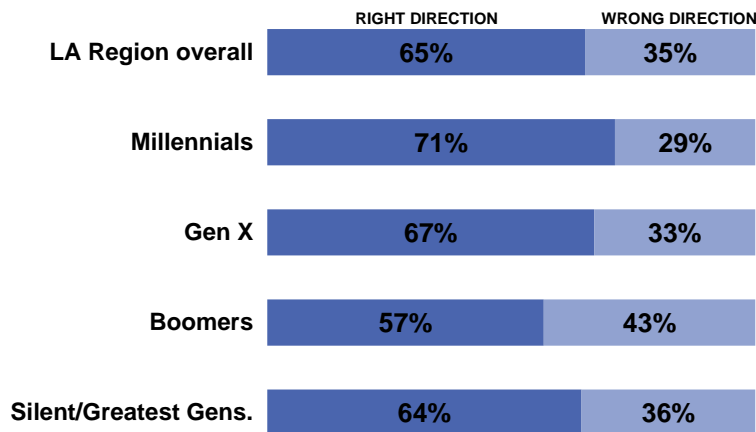
When national, regional, city, or neighborhood data are presented in isolation they are emphasized in red

Other data needing emphasis are presented in red

THOMAS & DOROTHY LEAVEY CENTER FOR THE STUDY OF LOS ANGELES
LOYOLA MARYMOUNT UNIVERSITY

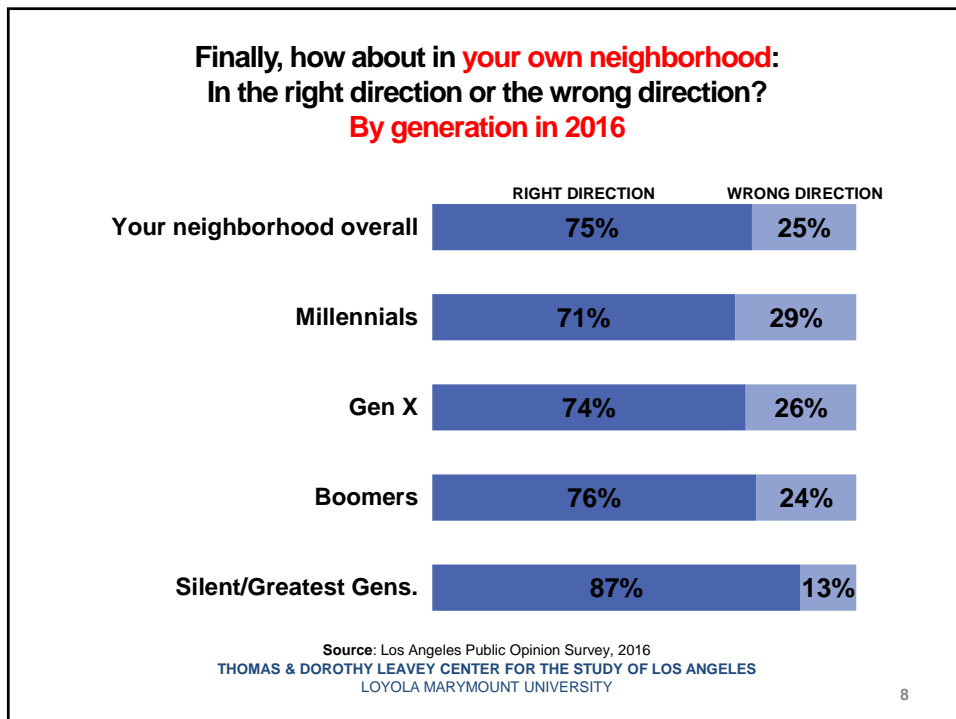
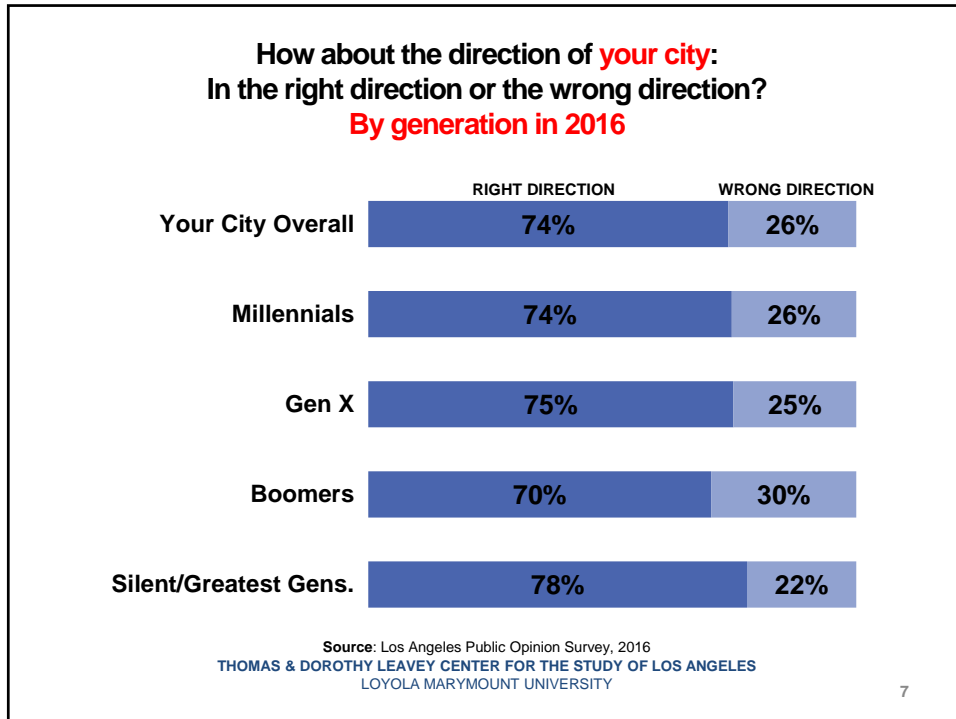
5

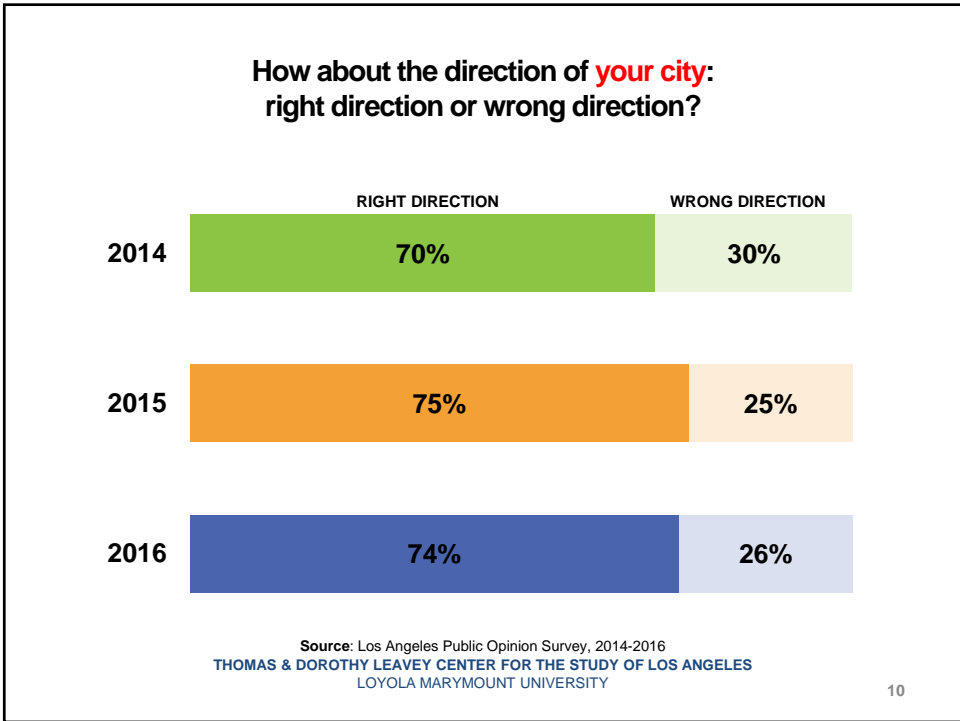
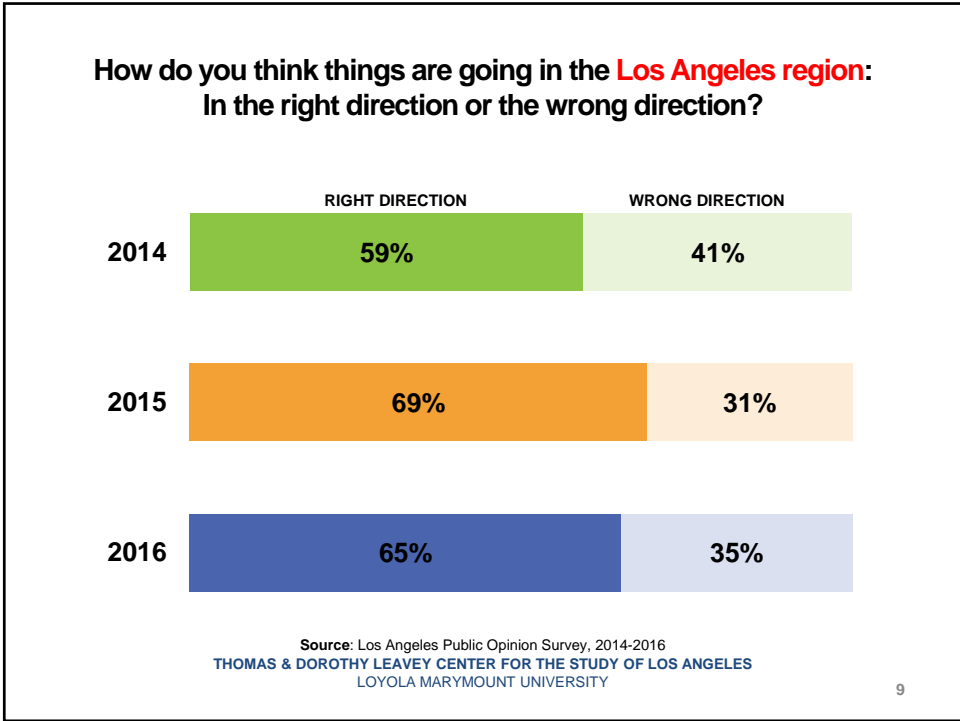
How do you think things are going in the Los Angeles region: In the right direction or the wrong direction? By generation in 2016

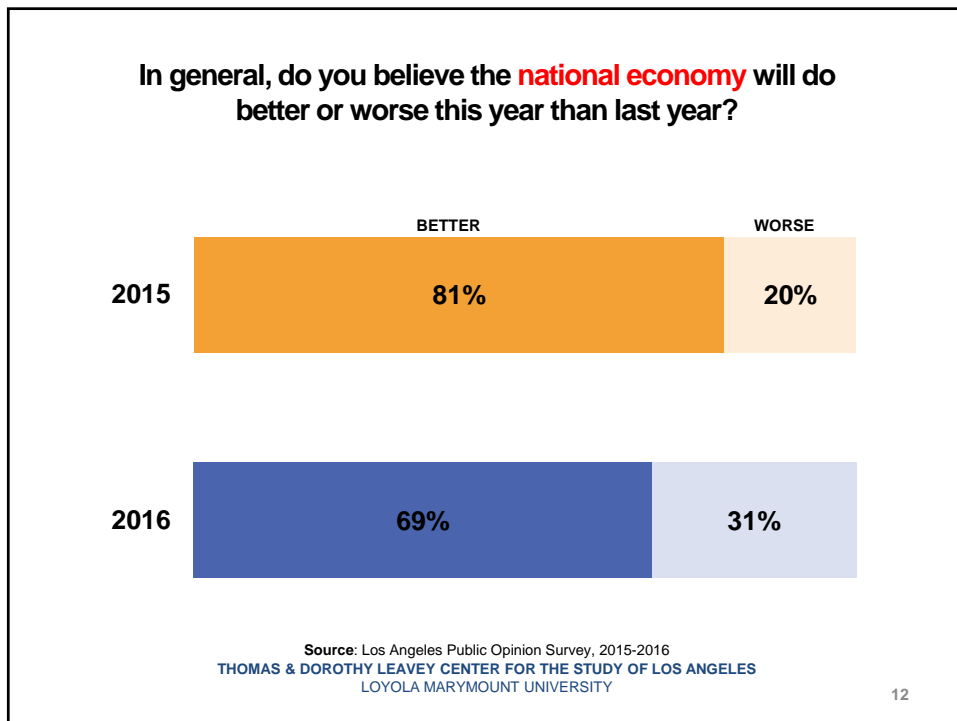
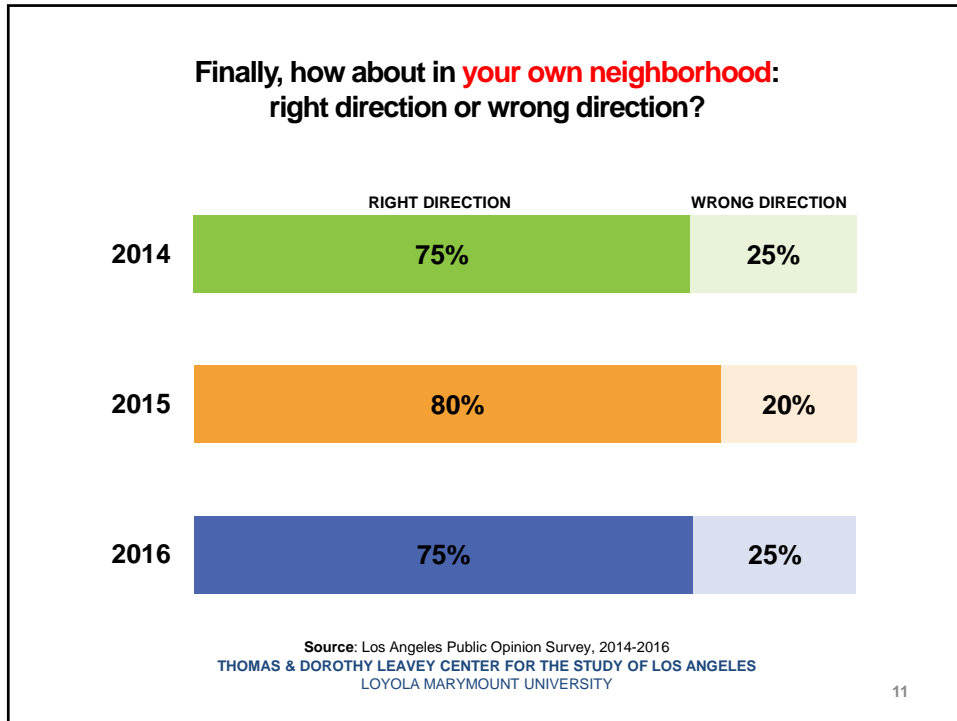


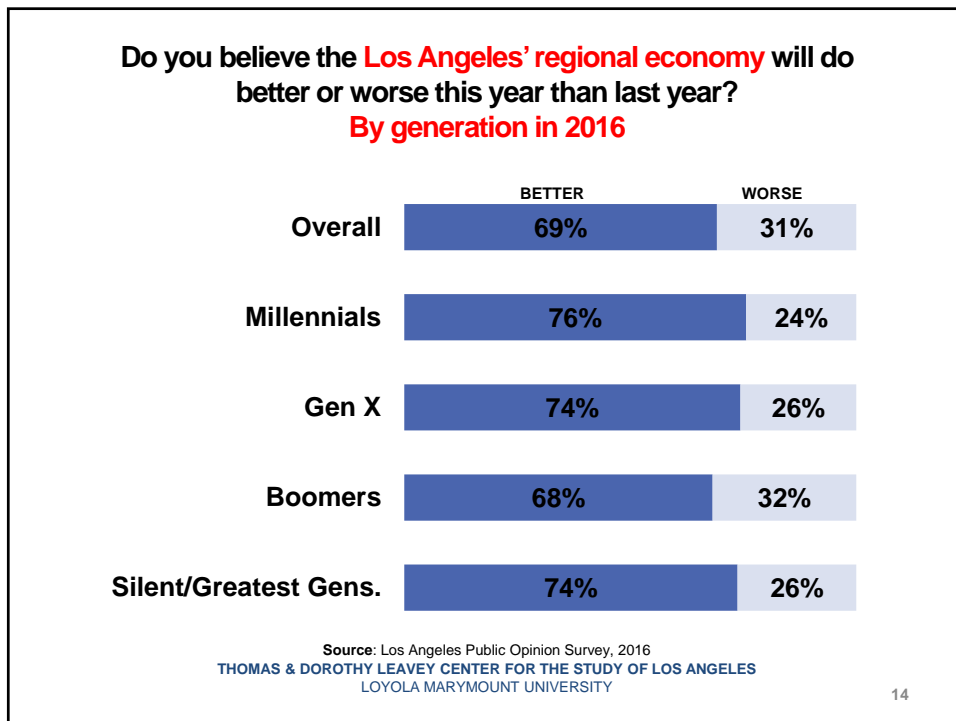
Source: Los Angeles Public Opinion Survey, 2016
THOMAS & DOROTHY LEAVEY CENTER FOR THE STUDY OF LOS ANGELES
LOYOLA MARYMOUNT UNIVERSITY

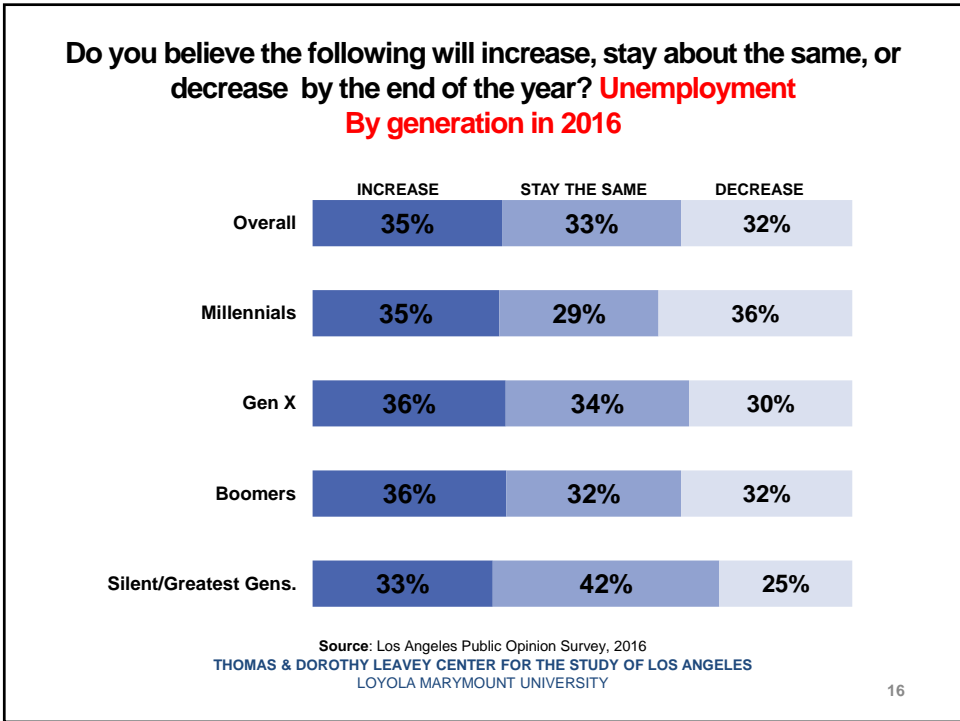
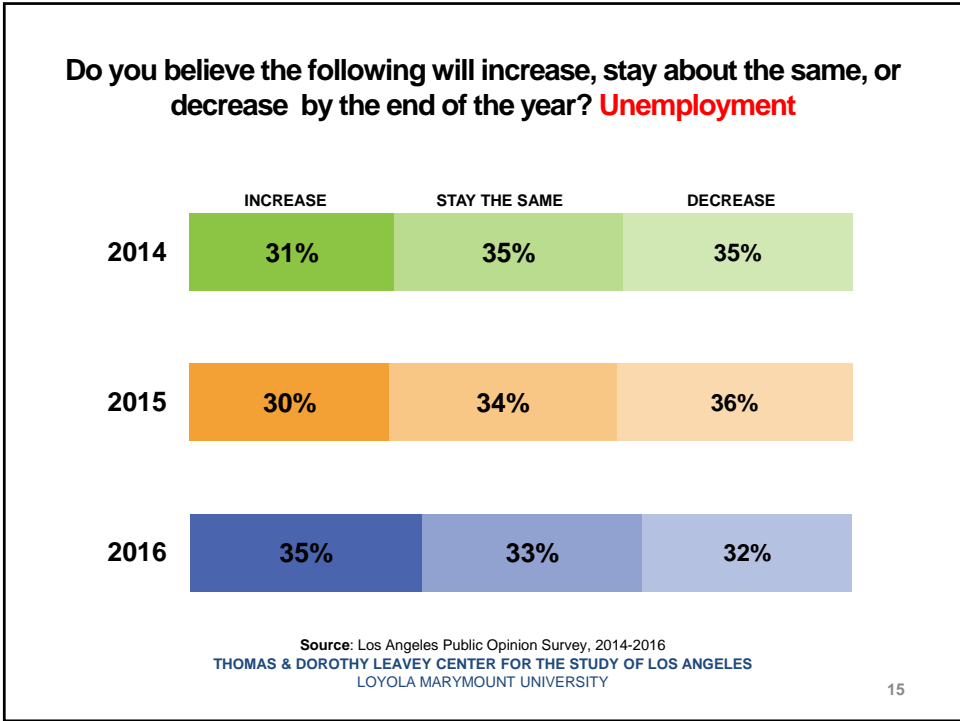
6

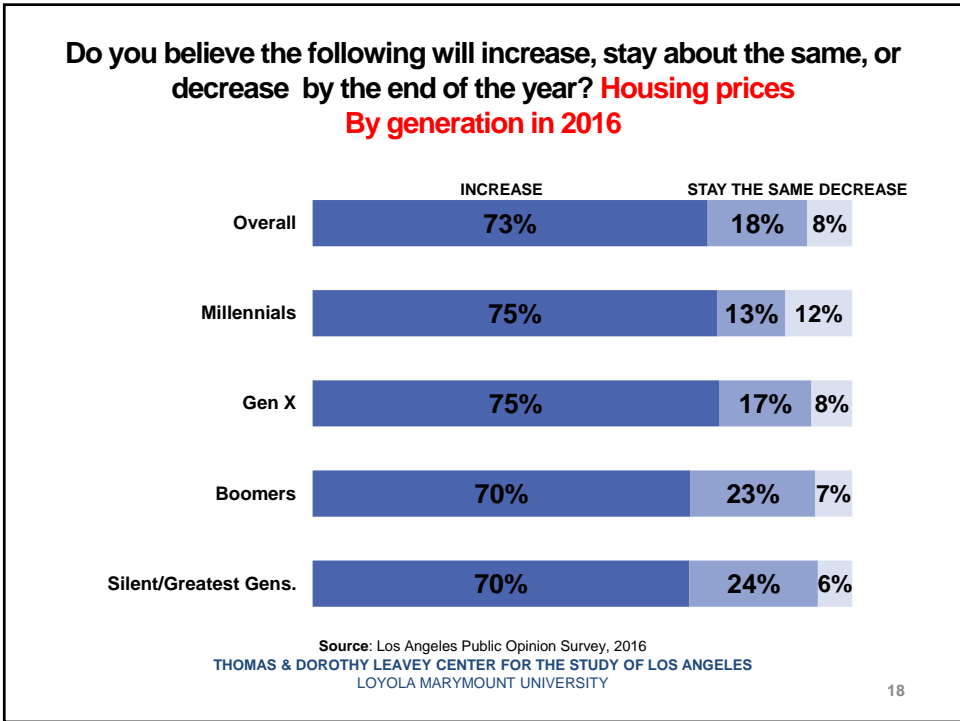
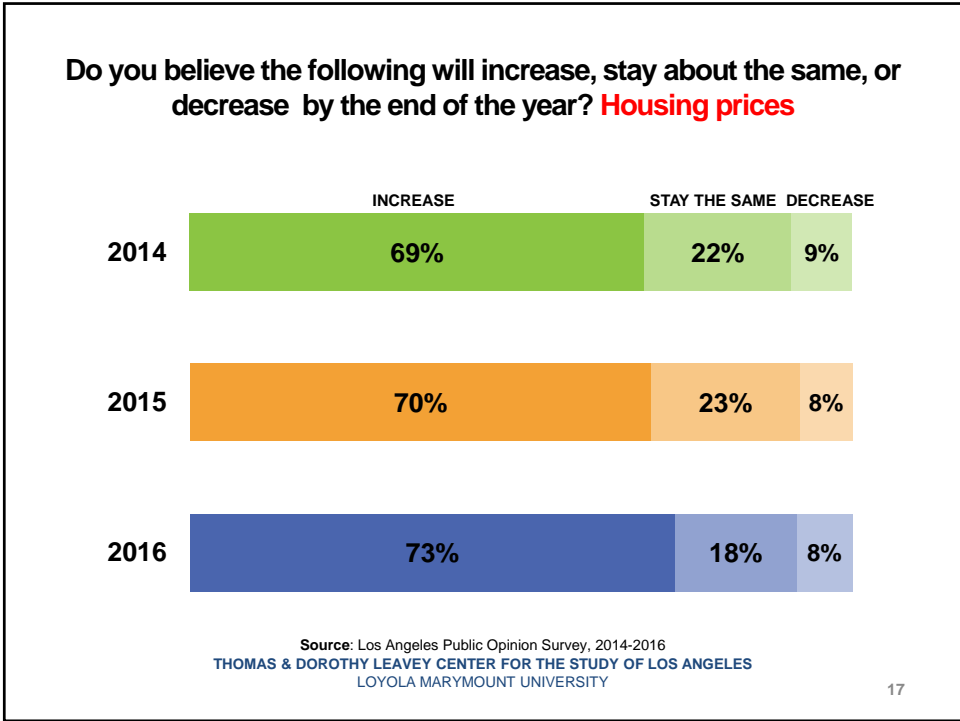


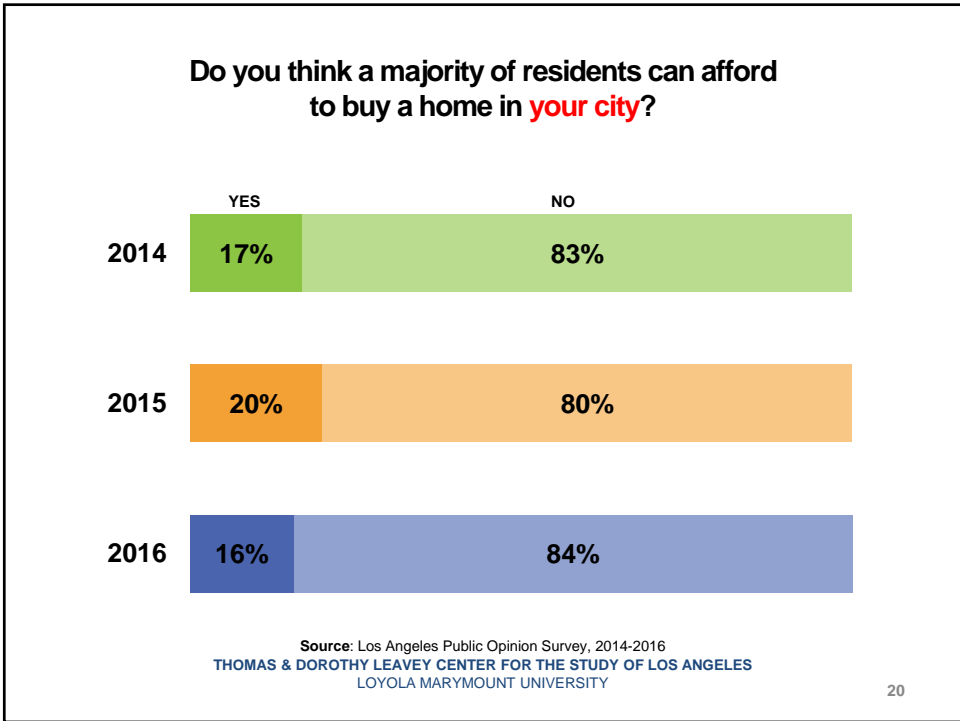
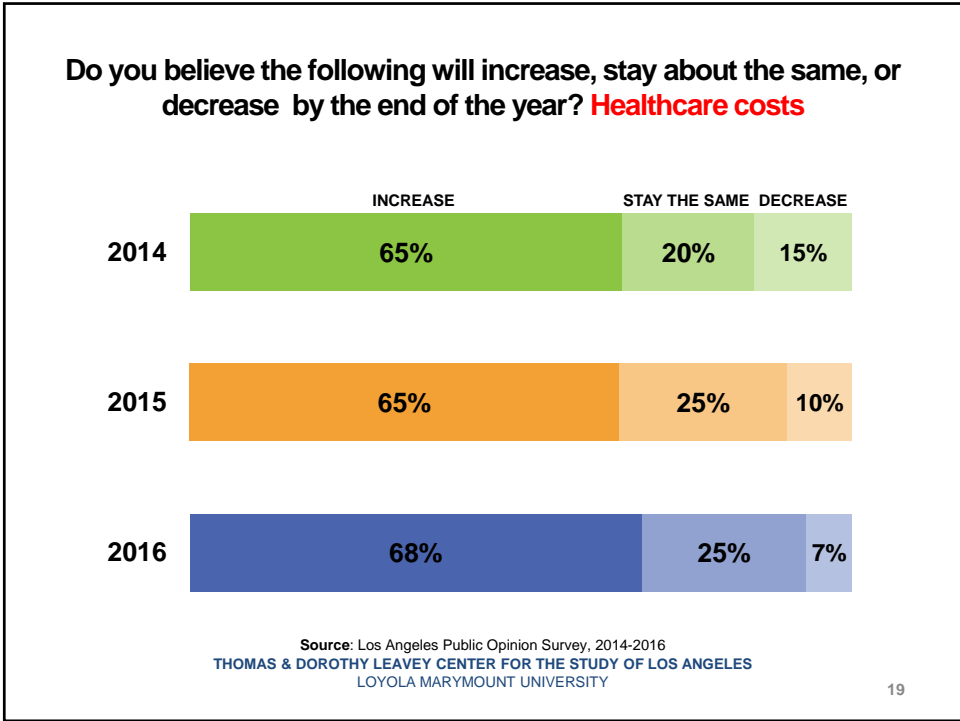


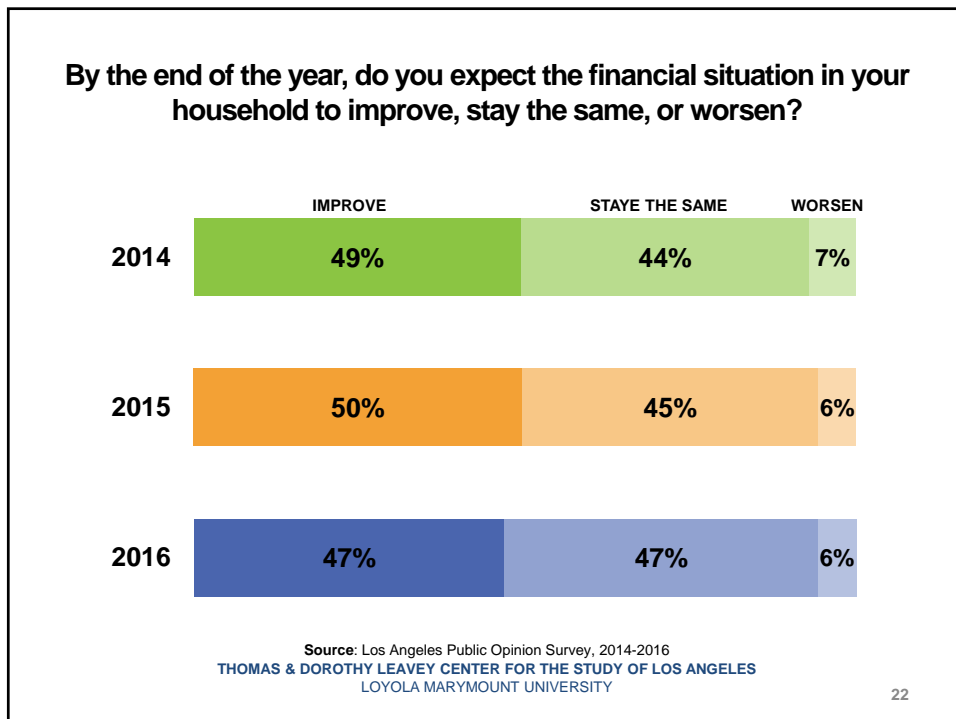
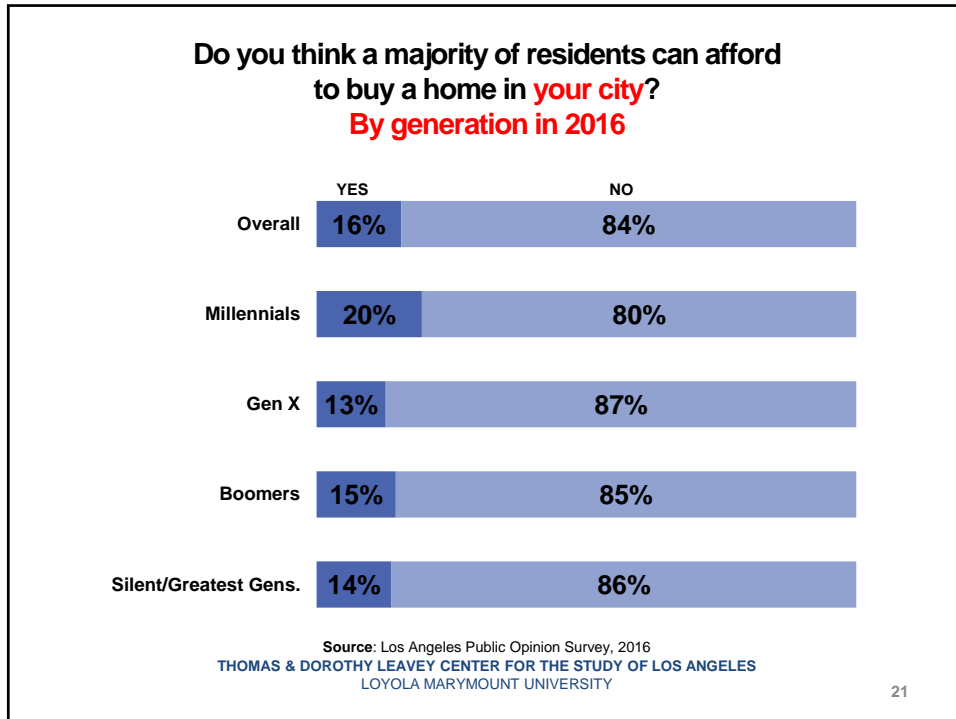


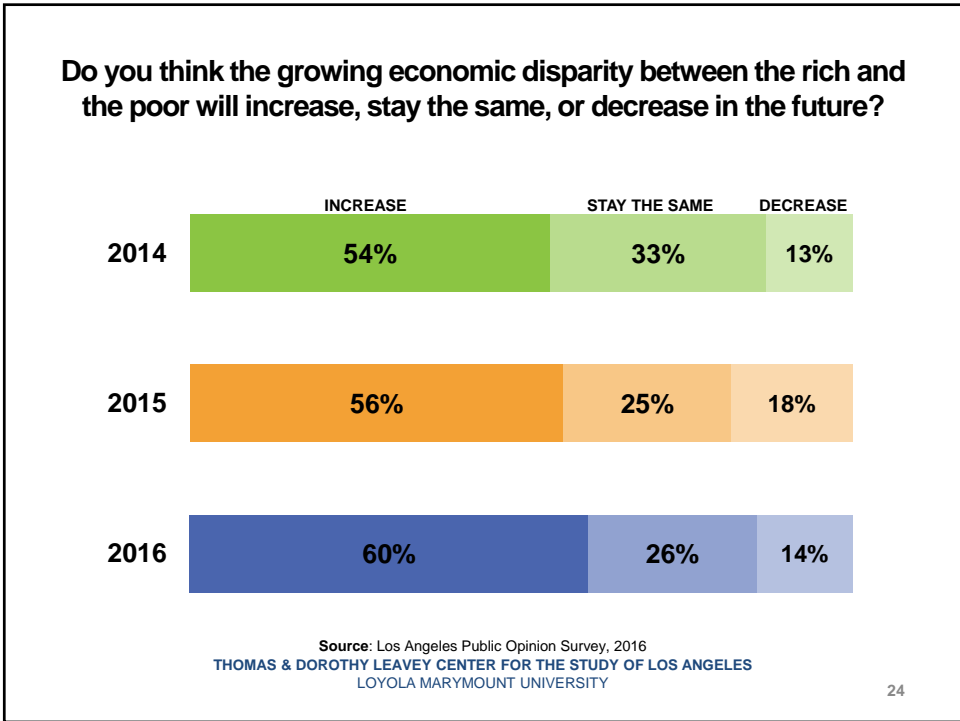
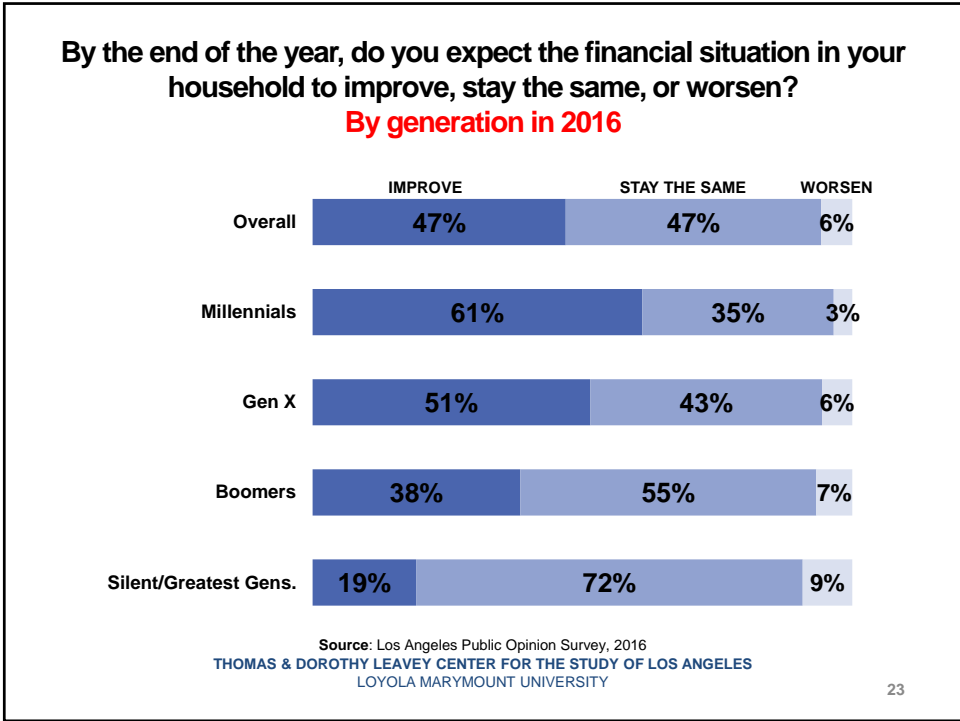


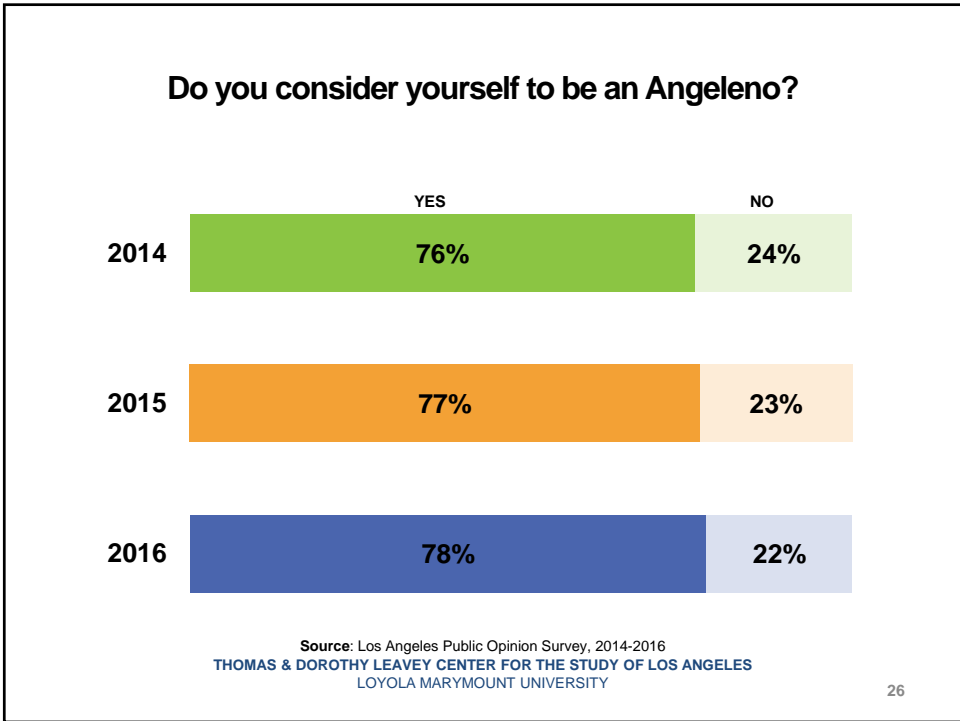
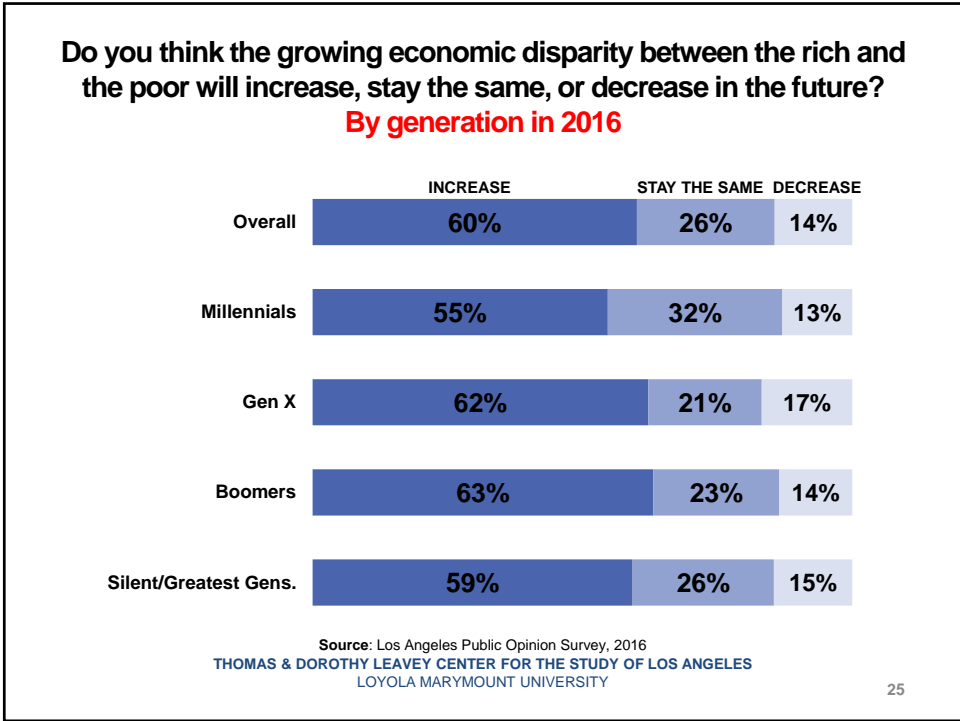


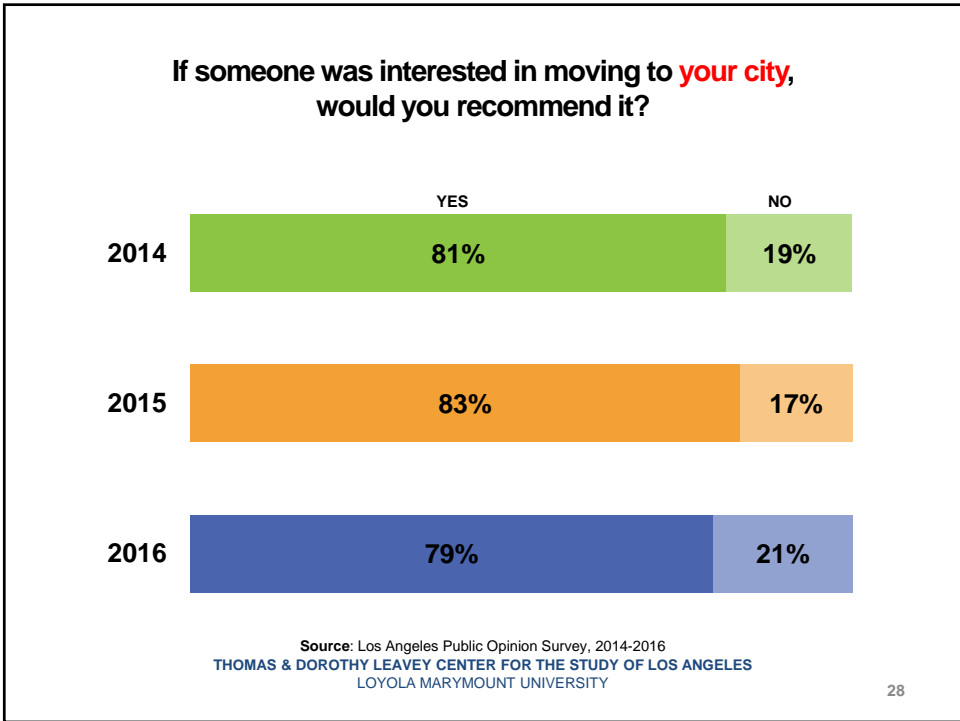
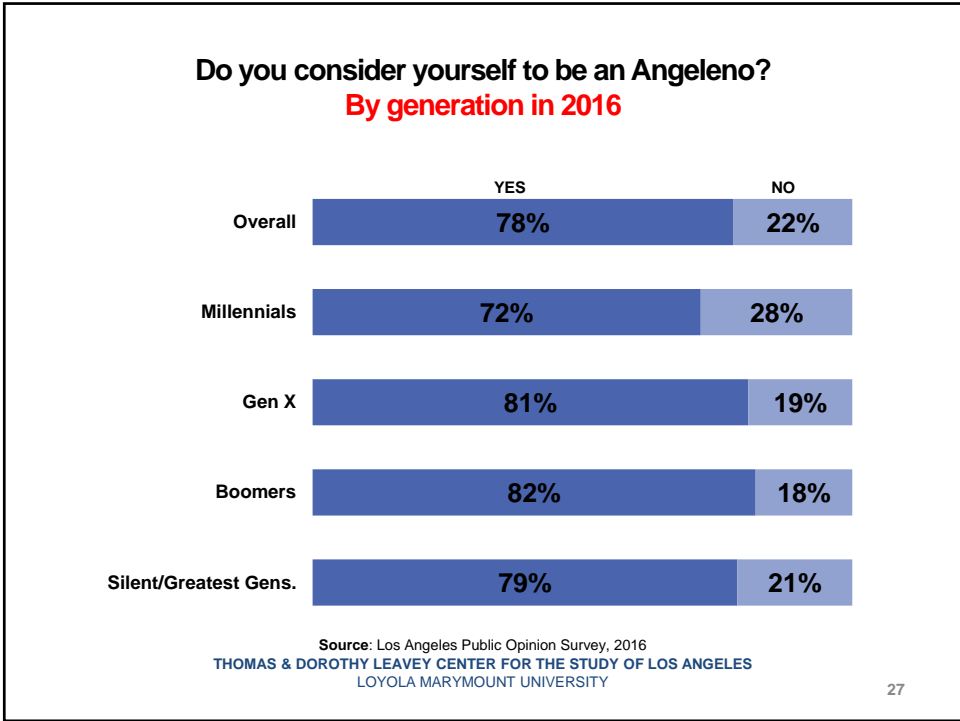


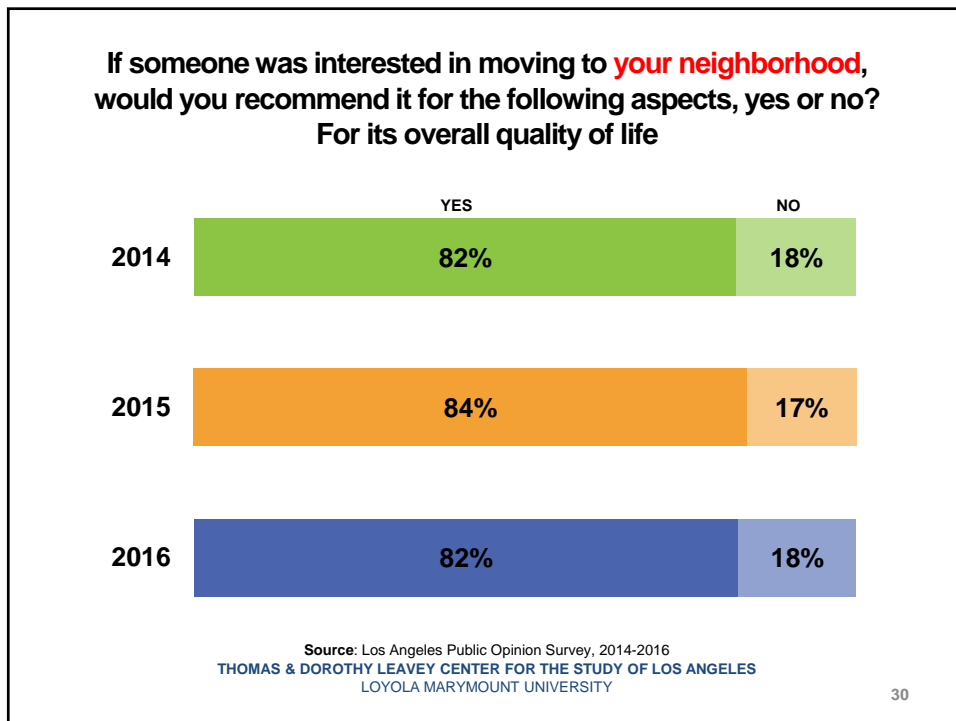
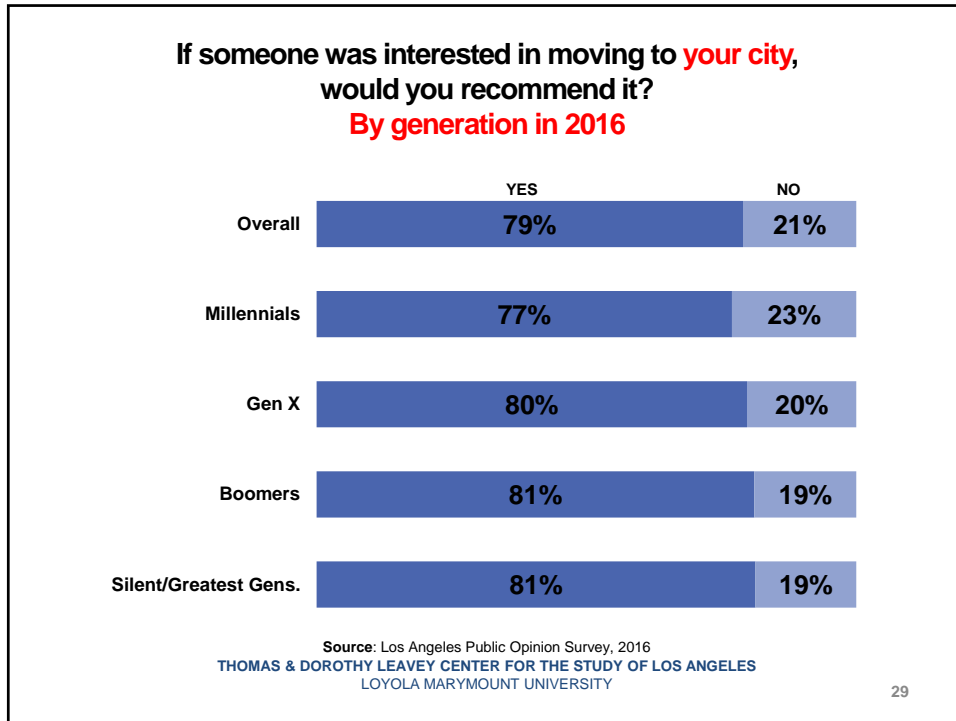


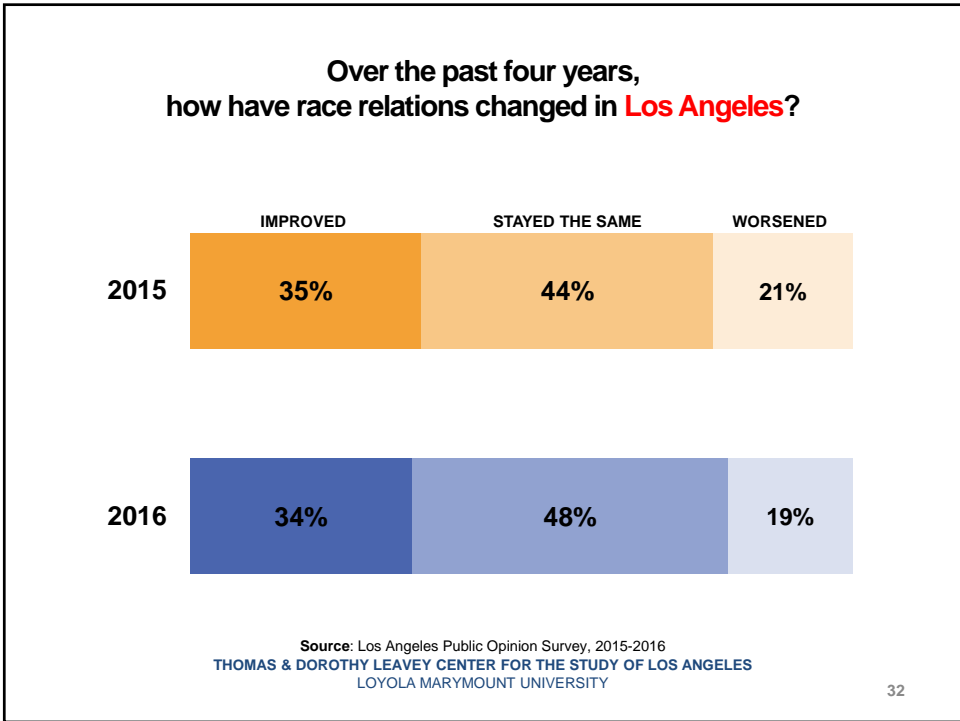
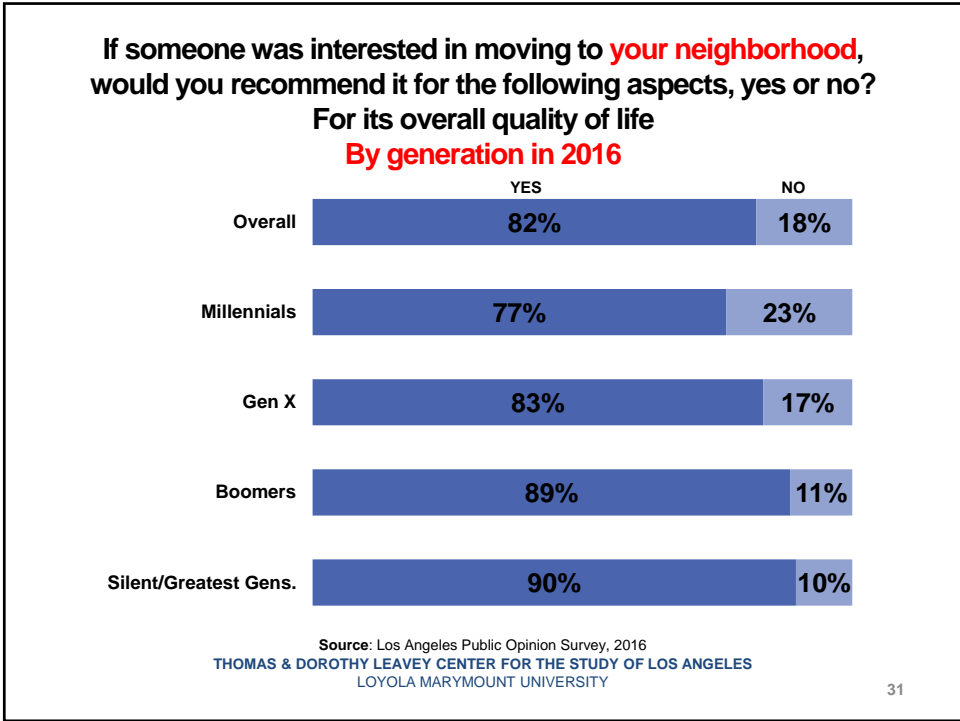


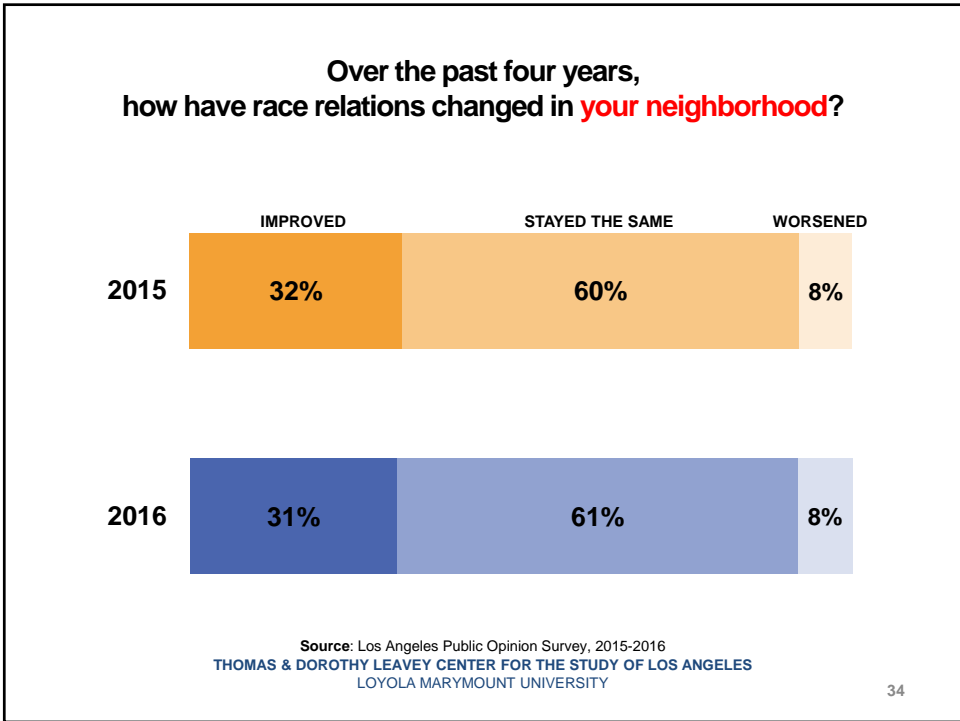
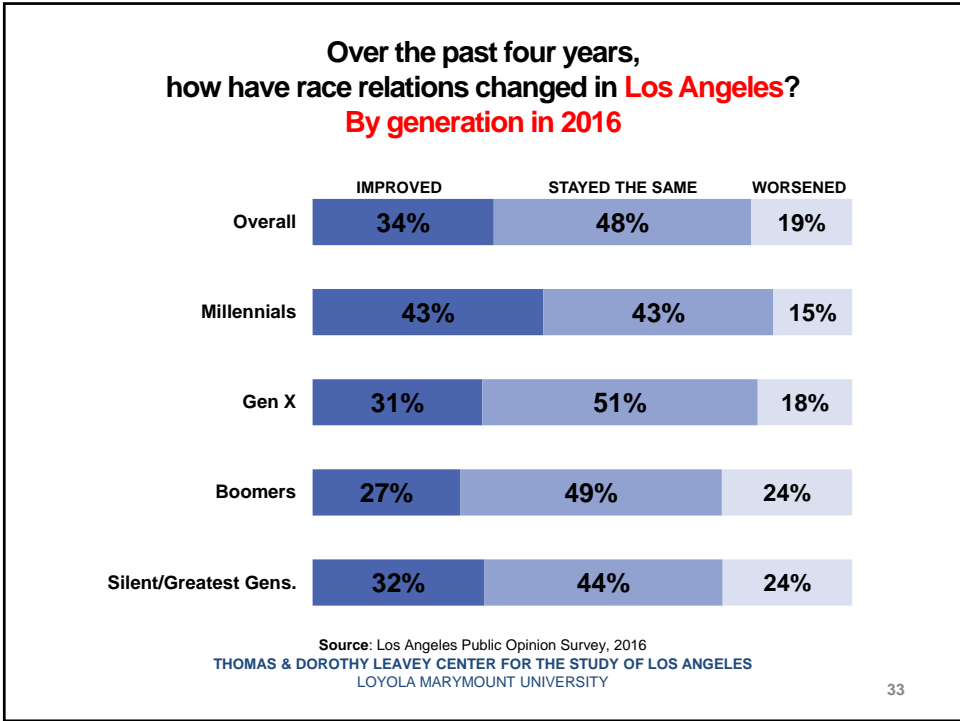


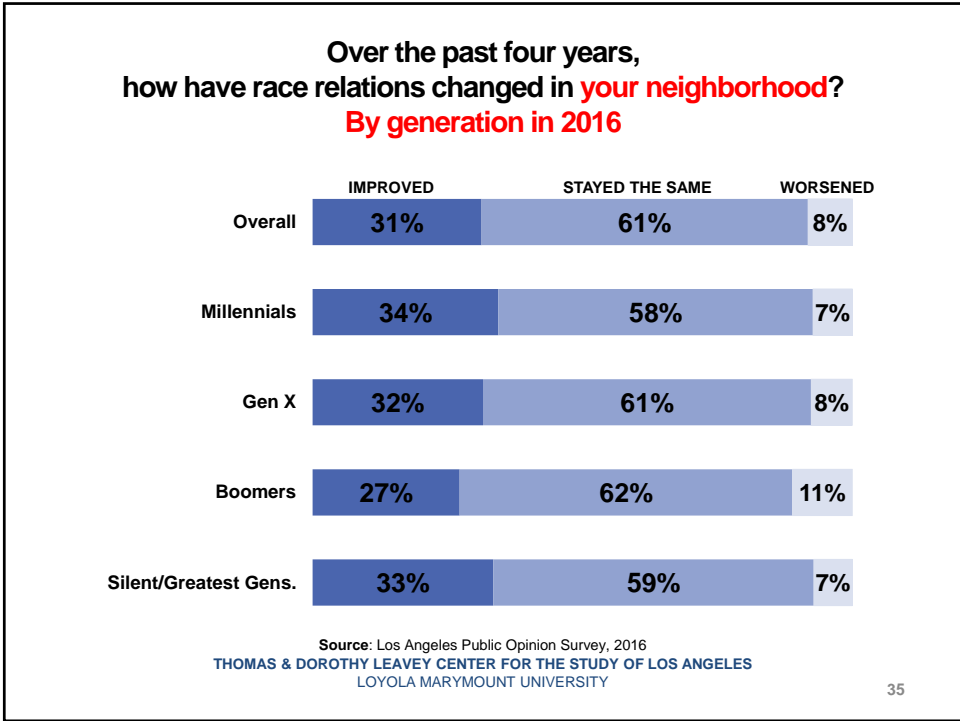












**Thomas and Dorothy Leavey
Center for the Study of Los Angeles**

**www.lmu.edu/studyLA
@LMUstudyLA**

Four social media icons are displayed in a row: Facebook (blue square with white 'f'), Twitter (blue square with white bird), Instagram (orange square with white camera icon), and YouTube (red square with white play button icon).

THOMAS & DOROTHY LEAVEY CENTER FOR THE STUDY OF LOS ANGELES
LOYOLA MARYMOUNT UNIVERSITY