

Birth Trends in Los Angeles County

Louise Rollin-Alamillo, MS
Los Angeles County Department of Public Health

June 11, 2019
SCAG/USC 30th Annual Demographic Workshop

Objectives

- Show trends in births in LAC, 2000 - 2017
 - Mother's race/ethnicity
 - Mother's nativity
 - Mother's age
- Review factors possibly associated with trends
 - Socioeconomic

Methods

Calculation of rates and other statistics:

- Total fertility rates and age-specific birth rates
- Mean age at first birth

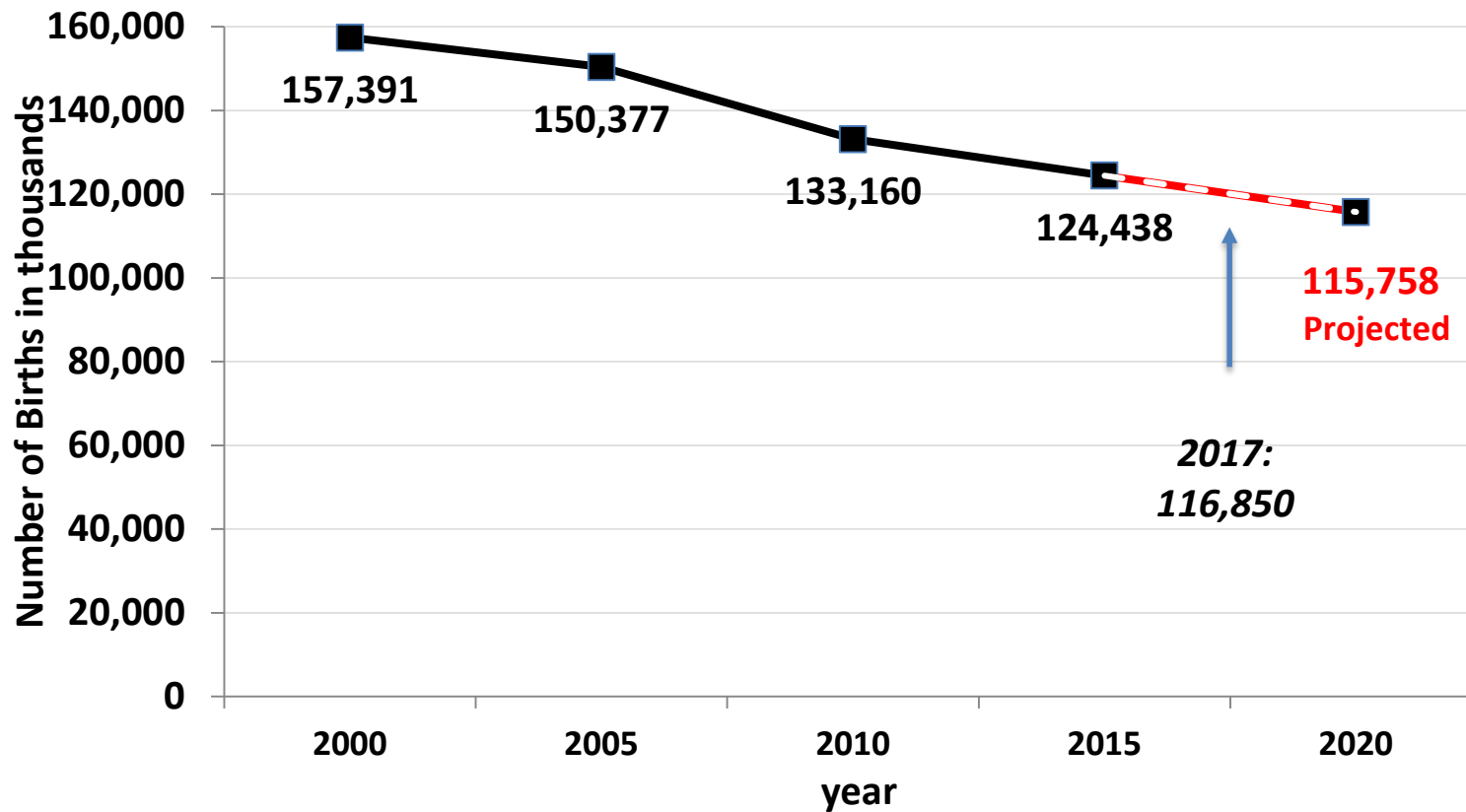
Total fertility rates - defined

- A measure of completed family size.
- Average number of children a woman would bear if today's age-specific rates of fertility prevailed throughout her lifetime.
- Best for making comparisons over time or between groups.
- The replacement rate is a TFR of 2.1 births per woman.

Data Sources

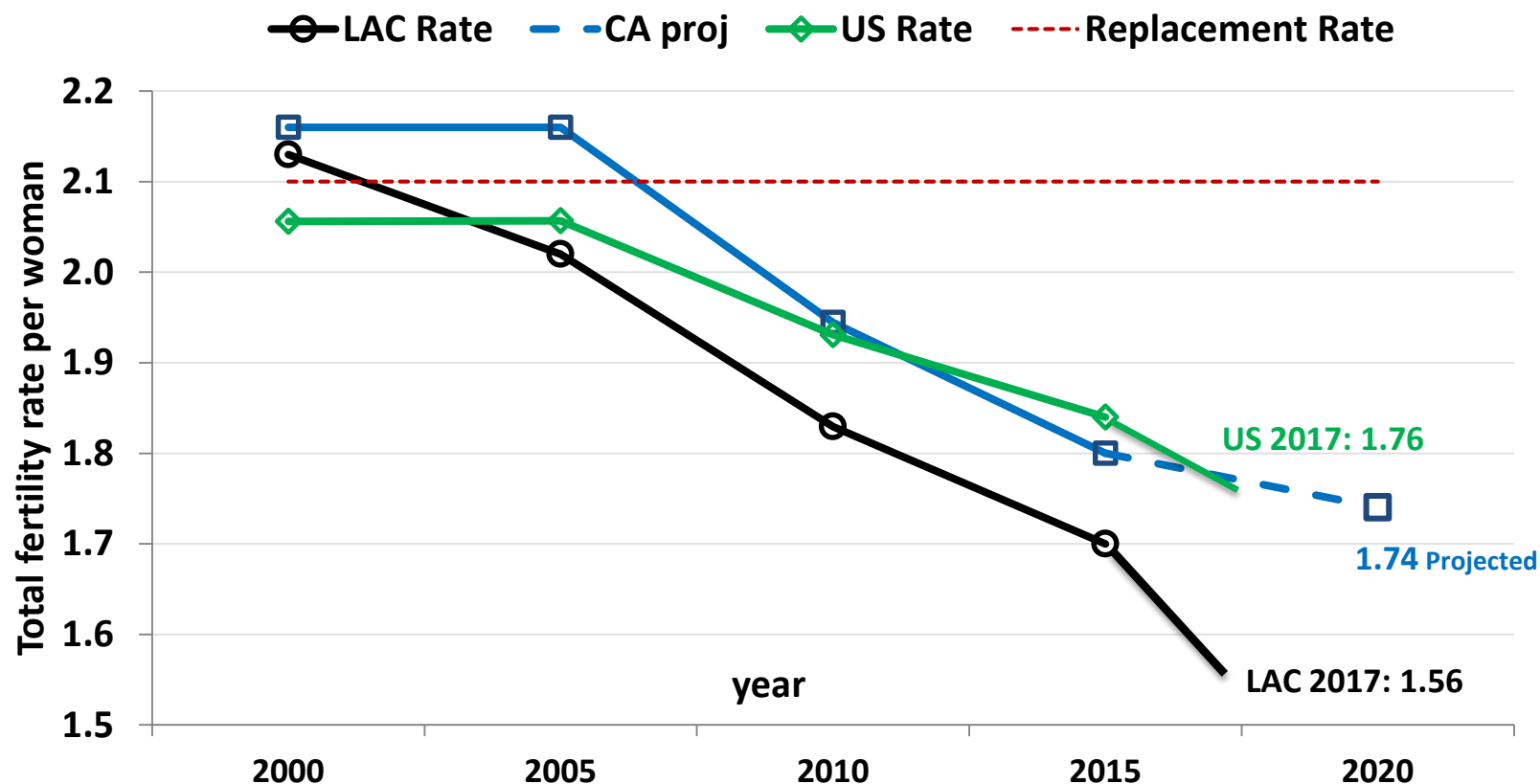
- Birth data: Birth Statistical Master File (BSMF)
- Population denominators and statistics:
 - NCHS Bridged Estimates
 - Public Use Microdata file (PUMS)
 - American Community Survey (ACS)

Births, Los Angeles County, 2000-2020.



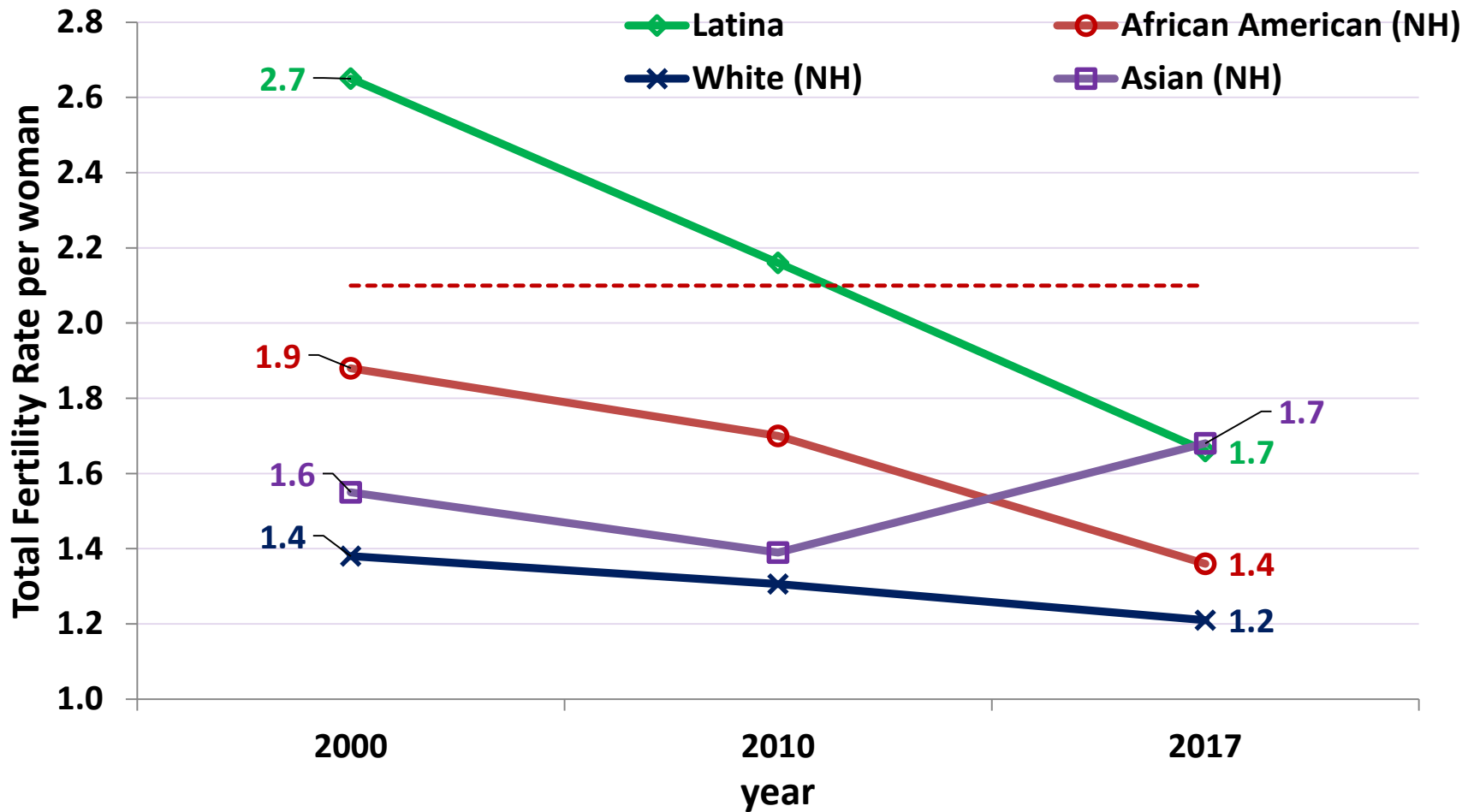
Source: California Department of Public Health, Birth Statistical Master Files for Los Angeles County Residents. California Department of Finance. Demographic Research Unit. 2018. Historical and Projected Fertility Rates and Births, 1990-2040. Sacramento: California Department of Finance. January 2018.

Total fertility rates, Los Angeles County, CA, and US, 2000-2020.

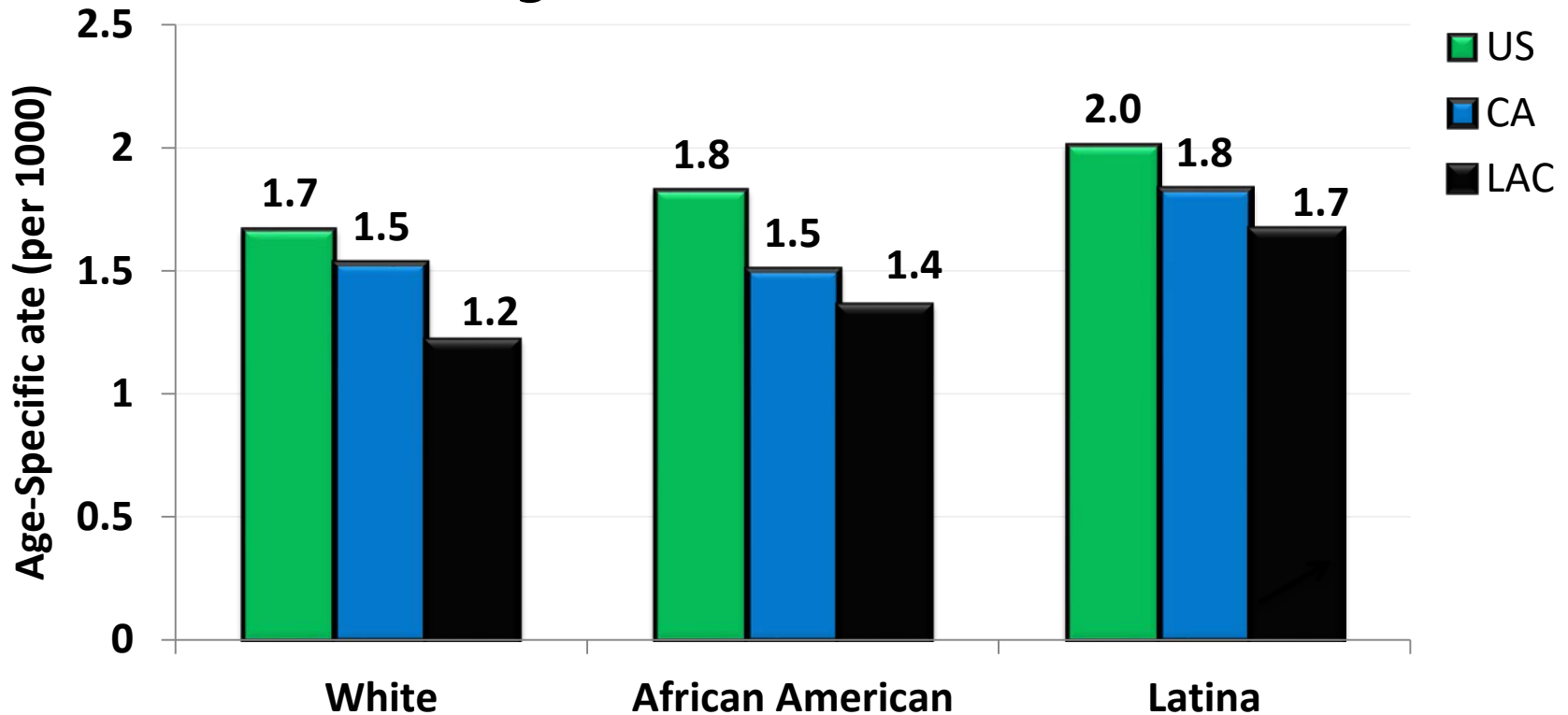


Data source: Birth Statistical Master File, California Department of Public Health and NCHS Bridged-Race Estimates for 2000, 2005, 2010, 2015, 2017.
 Source: California Department of Finance. Demographic Research Unit. 2018. Historical and Projected Fertility Rates and Births, 1990-2040. Sacramento: California Department of Finance. January 2018. Martin JA, Hamilton BE, Osterman MJK, et al. Births: Final data for 2015. National vital statistics report; vol 66, no 1. Hyattsville, MD: National Center for Health Statistics. 2017.

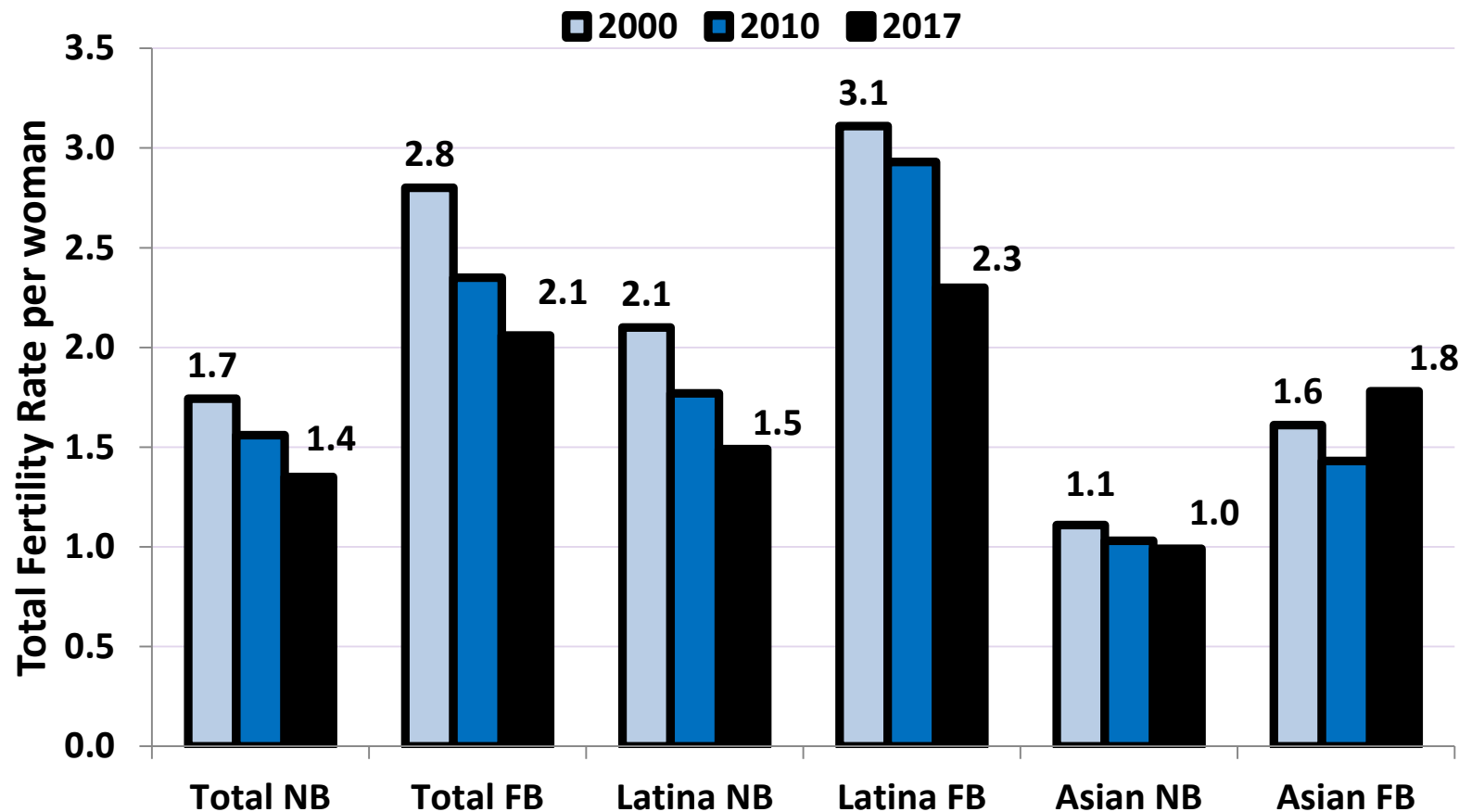
Total fertility rates by mother's race/ethnicity, Los Angeles County, 2000-2017



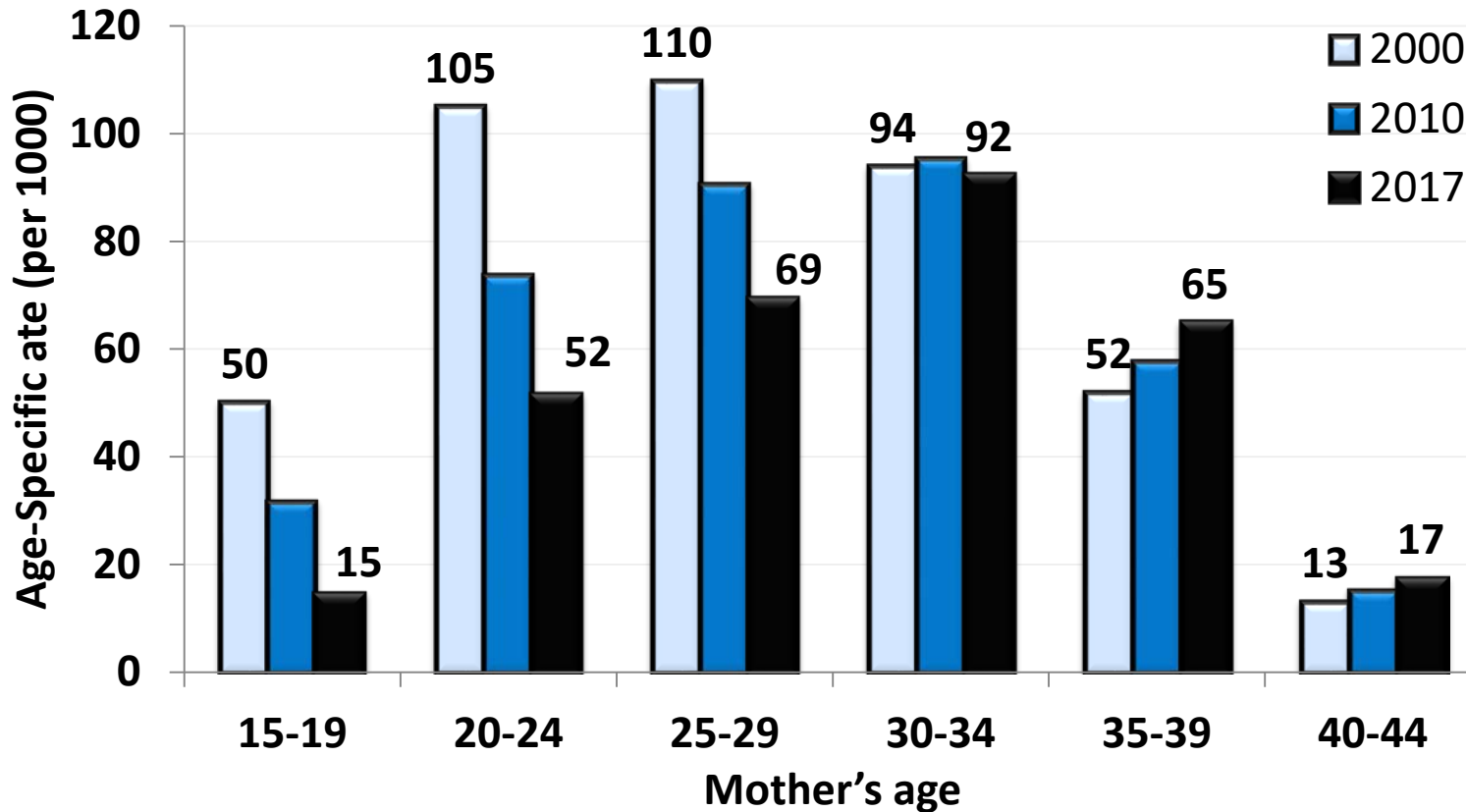
Total fertility rates, by mother's race/ethnicity, US, CA, and LAC, 2017



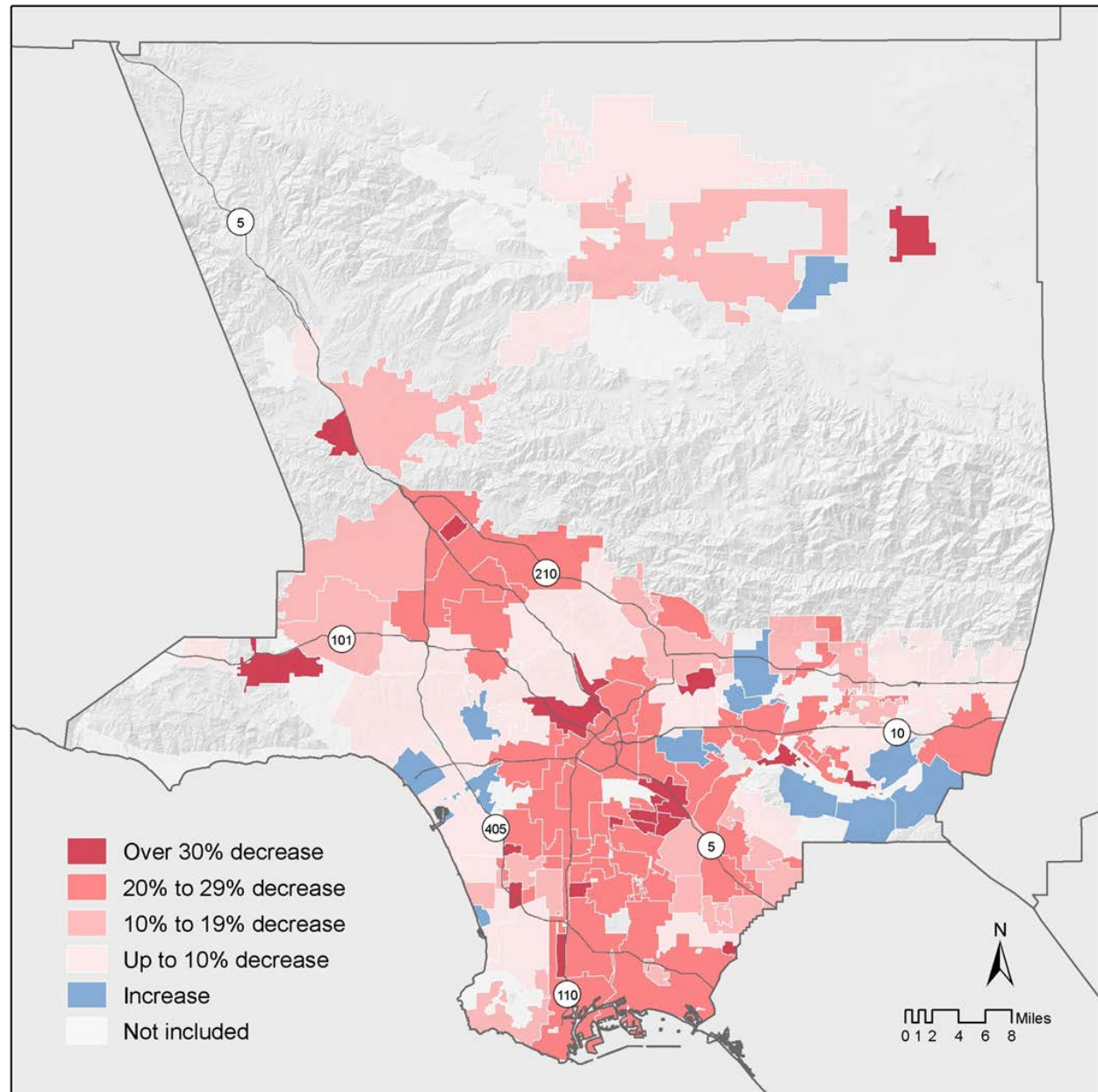
Total fertility rates by mother's nativity and race/ethnicity, LAC, 2000, 2010, 2017.



Age-specific rates, Los Angeles County, 2000, 2010, 2017.



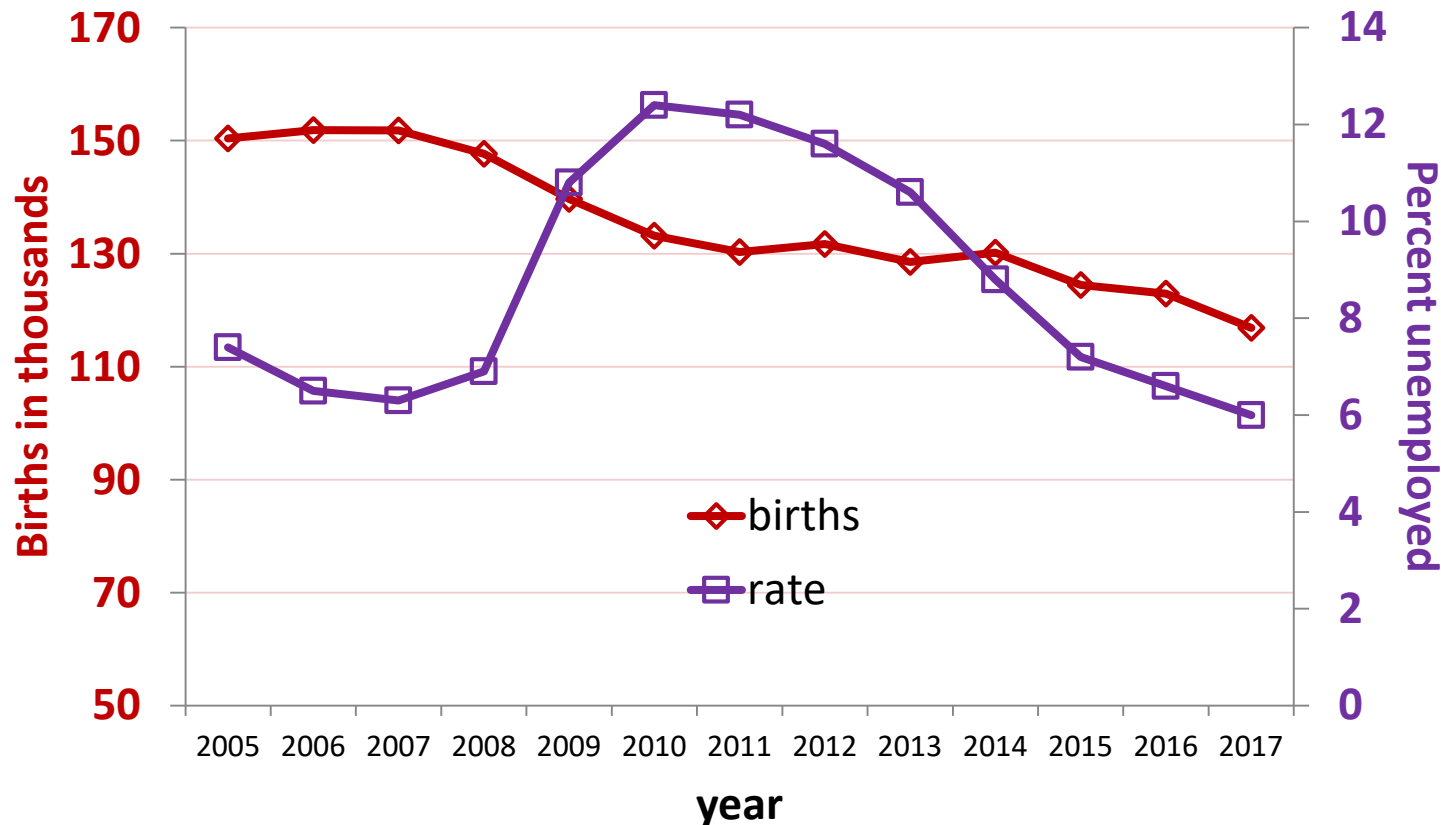
Changes in births by city, 2007 vs 2015



Economic Factors

- Unemployment & changes in births
- Birth rate by mother's educational attainment

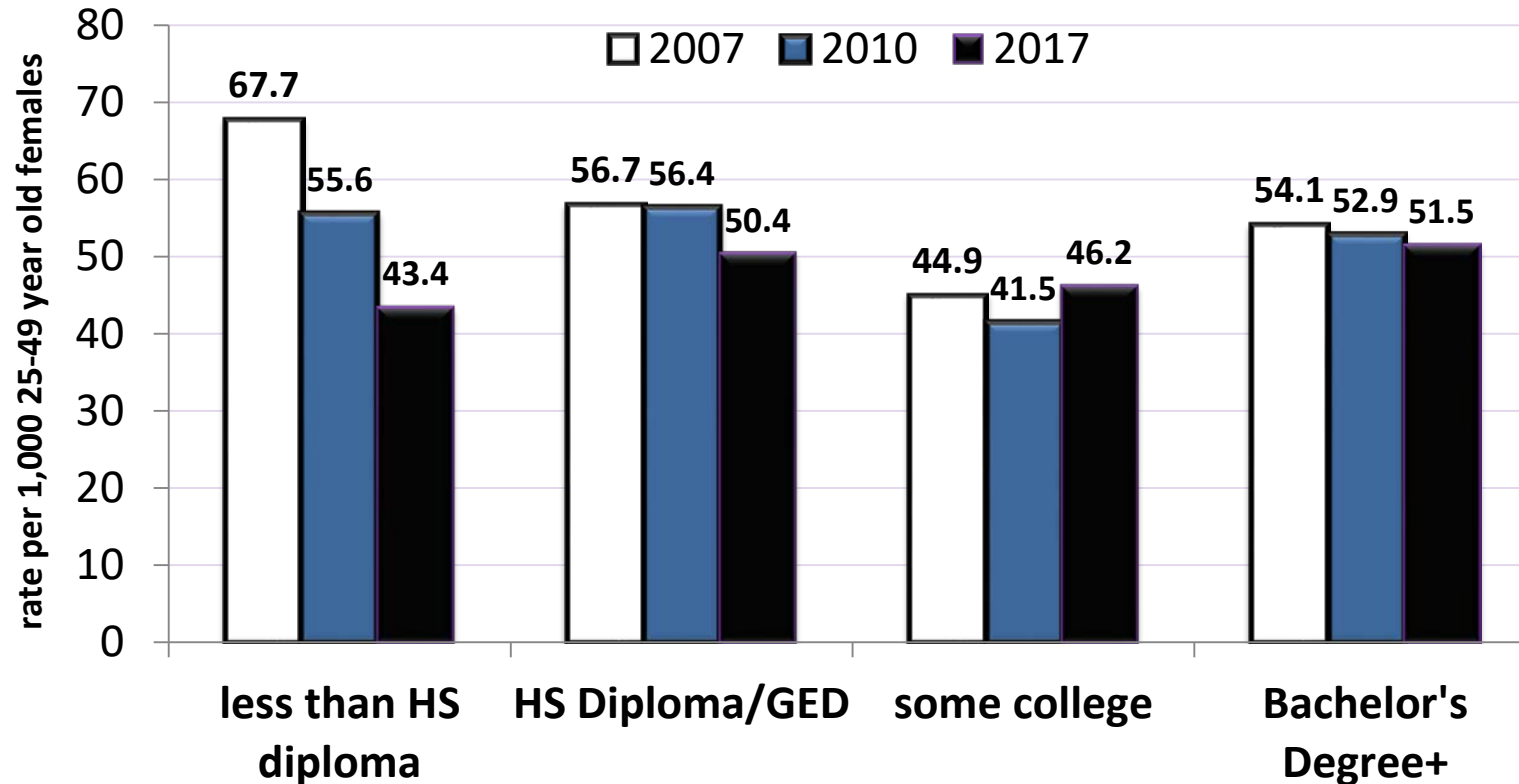
Change in unemployment rate and births, Los Angeles County, 2005-2017.



Data source: Census Bureau's American Community Survey 1-year samples, Table S2301.

California Department of Public Health's Birth Statistical Master Files, Los Angeles County Residents

Birth rates* by mother's educational attainment, LAC, 2007, 2010, 2017



Data sources: California Department of Public Health, Birth Statistical Master File, 2007, 2010, and 2017. Census Bureau's Public Use Microdata (PUMS) 2007, 2010, and 2017 1-year estimates.