

SOUTHERN CALIFORNIA



**ASSOCIATION of
GOVERNMENTS**

Main Office

818 West Seventh Street

12th Floor

Los Angeles, California

90017-3435

t (213) 236-1800

f (213) 236-1825

www.scag.ca.gov

Officers

President

Larry McCallon, Highland

First Vice President

Pam O'Connor, Santa Monica

Second Vice President

Glen Becerra, Simi Valley

**Executive/Administration
Committee Chair**

Larry McCallon, Highland

Policy Committee Chairs

Community, Economic and
Human Development
Bill Jahn, Big Bear Lake

Energy & Environment
Margaret Clark, Rosemead

Transportation
Greg Pettis, Cathedral City

MEETING OF THE

PLANS & PROGRAMS TECHNICAL ADVISORY COMMITTEE

**Wednesday, February 9, 2011
1:30 p.m. – 3:30 p.m.**

**SCAG Offices
818 West 7th Street, 12th Floor
Board Room
Los Angeles, CA 90017
(213) 236-1800**

Videoconferencing is available with a 72-hour advance notice by contacting Margaret Lin at lin@scag.ca.gov or 213-236-1866.

Teleconferencing Information:
Number: 1-800-230-1093

Silent Live Web PowerPoint Presentations:

<https://www.webmeeting.att.com>

Meeting #: 8772145010 | Participant Code: 159785

If members of the public wish to review the attachments or have any questions on any of the agenda items, please contact Margaret Lin at 213-236-1866 or lin@scag.ca.gov

SCAG, in accordance with the Americans with Disabilities Act (ADA), will accommodate persons who require a modification of accommodation in order to participate in this meeting. If you require such assistance, please contact SCAG at (213) 236-1866 at least 72 hours in advance of the meeting to enable SCAG to make reasonable arrangements. To request documents related to this document in an alternative format, please contact (213) 236-1866.

Membership

February 2011

Charlie Larwood, Chair

Kevin Viera, Vice-Chair

<u>Member</u>	<u>Representing</u>
Lori Abrishami	Los Angeles County Metro
Jacob I. Alvarez	Coachella Valley AG
Mark Baza	Imperial County Transportation Commission
Marlon Boarnet	UCI Dept. of Planning, Policy, and Design
Kerry Cartwright	Port of Los Angeles
Diana Chang	Westside Cities COG
David Cordero	SCAG Region Special Districts
Alan De Salvio	Antelope Valley AQMD
	Mojave Desert AQMD
Steve DeGeorge	Ventura County Transportation Commission/Ventura COG
Matt Dessert	Imperial County APCD
Maurice Eaton	Caltrans District 11
Valerie Edwards	Los Angeles Unified School District
Maureen El Harake	Caltrans District 12
Kim Fuentes	South Bay Cities COG
Carol A. Gomez	South Coast AQMD
Mary Heim	California Department of Finance
Mark Herwick	County of Los Angeles
Michael Hollis	Metropolitan Water District of Southern California
Melissa Joshi	Caltrans District 7
Marianne Kim	American Automobile Association
Richard Kite	North LA County – North
Charlie Larwood	Orange County Transportation Authority
Valarie McFall	Transportation Corridor Agencies
Genie McGaugh	Ventura County APCD
Shirley Medina	Riverside County Transportation Commission
Miles Mitchell	City of Los Angeles
Nancy Pfeffer	Gateway Cities COG
Mark Roberts	Caltrans District 8
Terry Roberts	Air Resources Board
Ty Schuiling	San Bernardino Associated Governments
Marc Seferian	Las Virgenes/Malibu COG
Eric Shen	Port of Long Beach
Dave Simpson	Orange County COG
Bill Trimble	San Gabriel Valley COG
Sera Wirth	SCAG Region Local Agency Formation Commissions
Kevin Viera	Western Riverside COG
Lisa Webber	North LA County – South
Fred Zohrehvand	Arroyo Verdugo

PLANS & PROGRAMS TECHNICAL ADVISORY COMMITTEE FEBRUARY 9, 2011

TIME *PG#*

- 1.0 **CALL TO ORDER**
 (Charlie Larwood, OCTA and P&P TAC Chair)

- 2.0 **PUBLIC COMMENT PERIOD** – Members of the public desiring to speak on items on the agenda, or items not on the agenda, but within the purview of the Plans & Programs Technical Advisory Committee, must fill out and present a speaker’s card to the assistant prior to speaking. Comments will be limited to three minutes. The chair may limit the total time for all comments to twenty minutes.

- 3.0 **REVIEW and PRIORITIZE AGENDA ITEMS**

- 4.0 **CONSENT CALENDAR**
 - 4.1 **Approval Item**
 - 4.1.1 Minutes of January 11, 2011 P&P TAC Meeting 1

- 5.0 **DISCUSSION ITEMS**
 - 5.1 Incorporating 2010 Census Data into the 2012 RTP **Presentation: 30 min** *
 - (Frank Wen, SCAG Staff and Deborah Diep, OCCOG)* **Discussion: 30 min**

 - SCAG staff and P&P Working Group (Deborah Diep) will present options to incorporate 2010 Census Data into the 2012 RTP.

 - 5.2 Aviation Program Update **Presentation: 10 min**
 - (Michael Armstrong, SCAG Staff)* **Discussion: 10 min**

 - SCAG Staff will provide an update on the Aviation Program efforts.

 - 5.3 Non-Motorized Transportation Chapter Update **Presentation: 10 min** 9
 - (Margaret Lin, SCAG Staff)* **Discussion: 10 min**

 - SCAG Staff will provide an update on the vision and work plan for the 2012 RTP Non-Motorized Transportation Chapter.

* Attachment under separate cover

PLANS & PROGRAMS TECHNICAL ADVISORY COMMITTEE FEBRUARY 9, 2011

	<i>TIME</i>	<i>PG#</i>
5.4 <u>Transit Performance Assessment</u> (<i>Stephen Fox, SCAG Staff</i>)	Presentation: 10 min Discussion: 10 min	13

SCAG Staff will provide an update on the Transit Performance Assessment.

6.0 FUTURE AGENDA ITEMS

- ◆ Freight Movement Study (Annie Nam)
- ◆ Congestion Pricing Update (Annie Nam)
- ◆ Transportation Finance Update – Highway Trust Fund (Annie Nam)
- ◆ CEDP Process (Jacob Lieb/Frank Wen)
- ◆ Modeling for Dummies (Jonathan Nadler/Frank Wen)

7.0 ADJOURNMENT

The next meeting of the P&P TAC will be Tuesday, March 8, 2011 from 1:30 to 3:30pm.

Meeting of the
Plans & Programs Technical Advisory Committee (P&P TAC)
of the
Southern California Association of Governments

January 11, 2011

Minutes

THE FOLLOWING MINUTES ARE A SUMMARY OF ACTIONS TAKEN AND/OR DISCUSSIONS BY THE PLANS & PROGRAMS TECHNICAL ADVISORY COMMITTEE. AUDIO OF THE ACTUAL MEETING IS AVAILABLE FOR LISTENING IN SCAG'S DOWNTOWN LOS ANGELES OFFICE.

The Plans & Programs Technical Advisory Committee held its January 11, 2011 meeting at SCAG's downtown Los Angeles Office.

Members Present

Terry Roberts	Air Resources Board
Earl Withycombe	Air Resources Board - Alternate
Melissa Joshi	Caltrans District 7
Naomi Guth	City of Los Angeles - Alternate
Miles Mitchell	City of Los Angeles
Marc Seferian	Las Virgenes/Malibu COG
Nancy Pfeffer	Gateway Cities COG
Lori Abrishami	Los Angeles County Metro
Michael Hollis	Metropolitan Water District of Southern California
Richard Kite	North LA County - North
Deborah Diep	OCCOG
Gregory Nord	OCTA
Charlie Larwood	Orange County Transportation Authority
Ty Schuiling	San Bernardino Associated Governments
Bill Trimble	San Gabriel Valley COG
Walter Siembab	South Bay Cities COG - Alternate
Mark Herwick	County of Los Angeles
Kim Fuentes	South Bay Cities COG
Martha Eros	Westside Cities COG - Alternate
Kathryn Higgins	South Coast AQMD - Alternate
Valerie Edwards	Los Angeles Unified School District
Sarah Jepson	Los Angeles County Metro - Alternate
Steve De George	Ventura County Transportation Commission/Ventura COG
Marlon Boarnet	UCI Department of Planning, Policy and Design
Monica N. Soucier	Imperial County APCD - Alternate
Genie McGaugh	Ventura County APCD
Dave Simpson	Orange County COG

Kevin Viera Western Riverside COG

Members Excused

Eric Shen Port of Long Beach
 Kerry Cartwright Port of Los Angeles
 Valarie McFall Transportation Corridor Agencies

Members Not Present

Stephen Finnegan American Automobile Association - Alternate
 Alan De Salvo Antelope Valley AQMD/Mojave Desert AQMD
 Fred Zohrehvand Arroyo Verdugo
 Maurice Eaton Caltrans District 11
 Beth Landrum Caltrans District 11 - Alternate
 Maureen El Harake Caltrans District 12
 Everett Evans Caltrans District 12 - Alternate
 Dianna Watson Caltrans District 7 - Alternate
 Fernando Castro Caltrans District 7 - Alternate
 Mark Roberts Caltrans District 8
 James Camarillo Caltrans District 8 - Alternate
 Kim Uhlich SCAG Region Local Agency Formations Commissions
 Carol A. Gomez South Coast AQMD
 Mark Baza Imperial County Transportation Commission
 Mike Behen North LA County - North - Alternate
 Dave Peterson North LA County - South - Alternate
 Steve Smith San Bernardino Associated Governments
 Dave Simpson Orange County COG
 Aurora Wilson Coachella Valley AG - Alternate
 Connie Chung County of Los Angeles - Alternate
 Aimee Kratovil Federal Highway Administration - Alternate
 Karen Heit Gateway Cities COG - Alternate
 Matt Dessert Imperial County APCD
 Rosa Lopez-Solis Imperial County Transportation Commission - Alternate
 Mary E. Pritchard Los Angeles Unified School District - Alternate
 Lisa Webber North LA County - South
 Jolene Hayes Port of Long Beach - Alternate
 Shirley Medina Riverside County Transportation Commission
 Grace Alvarez Riverside County Transportation Commission - Alternate
 Larry Stevens San Gabriel Valley COG - Alternate
 Kim Uhlich SCAG Region Local Agency Formation Commissions
 David Cordero SCAG Regional Special Districts
 Marianne Kim American Automobile Association

Kim Fuentes	South Bay Cities COG
Kathryn Higgins	South Coast AQMD - Alternate
Sam Elters	Transportation Corridor Agencies - Alternate
Alan Ballard	Ventura County APCD - Alternate
Diana Chang	Westside Cities COG
Danielle Coats	WRCOG

1.0 CALL TO ORDER AND INTRODUCTIONS

The meeting was called to order at 1:36 p.m. by Charlie Larwood, OCTA & P&P TAC Chair.

2.0 PUBLIC COMMENT PERIOD

Jessica Meaney, California Policy Manager, Safe Routes to School National Partnership, made a public comment. Ms. Meaney stated that the intent of her comments is to encourage the committee to consider active transportation alternatives such as bicycling and walking in planning efforts for the 2012 Regional Transportation Plan (RTP). Ms. Meaney encouraged the addition of an expert in bicycling and walking modes to the committee who could offer insight on issues such as modeling and data collection. She stated the ideal person would also have an understanding of the RTP. Ms. Meaney stated this would be useful in enhancing the committee's knowledge of this type of transportation in the region.

Mark Butala, SCAG Staff, commented that the May Policy Workshops would be an ideal venue for interested stakeholders and members of the public to participate and offer their input on this topic.

Charlie Larwood, OCTA P&P TAC, asked the committee if there was any opposition to having an expert added to the committee. Walter Siembab commented that he was uncertain how much a role this type of transportation has played in previous planning efforts.

Naresh Amayta, SCAG Staff, commented that history may not be the best guide to follow when considering future planning. Mr. Amayta stated that regional plans are to include all modes of transportation including non-motorized transportation. Mr. Amayta indicated he can offer examples of past planning efforts that included non-motorized transportation. Naomi Guth, City of Los Angeles, offered that the current baseline project include bicycling and pedestrian projects. Mr. Guth encouraged the committee to include an expert in active transportation. Ms. Meaney stated she could provide names of experts in this area.

3.0 REVIEW AND PRIORITIZE AGENDA ITEMS

There were no comments regarding the review and prioritization of the agenda items.

4.0 CONSENT CALENDAR

4.1 Approval Item

4.1.1 Minutes of December 7, 2010 P&P TAC Meeting

The minutes of December 7, 2010 were approved with no revisions.

5.0 DISCUSSION ITEMS

5.1 Update on City Profiles

Ping Chang, SCAG staff, provided an update on the City Profiles project. Mr. Chang stated that local profiles primarily consist of demographic and socioeconomic information, such as housing, employment, and retail sales. They were first provided to all member jurisdictions in 2009 and have become an ongoing member service that is provided every two years. Mr. Chang stated that ongoing efforts include the updating of nearly 200 local profile reports, which has proven labor intensive. Additionally, census data that will be released during 2011 may trigger the need for additional updates. It was determined that the best way to address these issues is to have an automated process. Mr. Chang stated that current efforts include completing the automation process and that it is anticipated that in early February 2011 a draft can be provided to member jurisdictions and sub-regional coordinators for their review. The final release is anticipated for the SCAG General Assembly in May this year.

Bill Trimble, San Gabriel Valley COG, asked about the smaller sample size of demographic data of the most recent census and its potential effect on the reports. Mr. Chang stated the local profile report does not rely exclusively on census data. Other sources are also used, for example, for retail sales (from the California Board of Equalization) or employment data (from the California Employment Development Department (EDD)).

5.2 Regional Housing Needs Assessment

Joseph Carreras, SCAG Staff, presented an update on the Regional Housing Needs Assessment (RHNA). Mr. Carreras pointed out this is the fifth revision of the RHNA and that each one has required changes mandated by law or some regulatory constraint. The scheduled 2012 RHNA will set local housing and zoning goals to support growth, including transit-oriented, mixed-use, and infill development. These local goals are in turn aggregated into a region-wide Sustainable Communities Strategy (SCS) to fairly allocate greenhouse gas (GHG) emission reduction targets across the region. Additionally, SB 375 calls for the RHNA to be consistent with an SCS and a Regional Transportation Plan. In contrast to the last RHNA, the upcoming RHNA will incorporate a subregion delegation set of responsibilities that covers public outreach, public hearings, local surveys, local input and RHNA methodology development. The RHNA methodology must still address anticipated housing needs for all income groups related to population and employment growth, and reduce the concentration of lower income households. Additionally, it must now incorporate sufficient land use capacity to support improved mobility and jobs-housing balance, including complimentary transportation efficiency adjustments that reduce GHG and tailpipe emissions. The major planning challenges include building a RHNA consistent with the SCS and other SB 375 requirements while also reconciling any differences between DOF/HCD populations and housing projections with the regional integrated growth forecast. Additionally, it will incorporate the late-arriving 2010 Census and Annual Community Surveys (ACS) information to determine RHNA land use capacity by income category to meet GHG reduction targets.

Nancy Pfeffer, Gateway Cities COG, asked about the bodies that guide RHNA activities. Mr. Carreras stated the first is the RHNA Task Force. It was brought forth by former SCAG President Richard Dixon as a way to explore different housing issues. The second is the 2011 Housing Element Working Group. This working group was established by the state housing department. It works to link together elements mandated by SB 375 and the regional housing needs planning requirements.

Naomi Guth, City of Los Angeles, asked about delegation to subregions. Mr. Carreras explained that subregions will have additional sway to mold the outcome including affecting areas such as RHNA methodology and social equity policies. Ms. Guth offered that it would be beneficial to cities if SCAG could take on some delegation for this effort. Mr. Carreras offered that subregional involvement is encouraged for this process.

Bill Trimble, San Gabriel Valley COG, offered that it may be useful to explore those types of delegation that are widely supported by the subregions. He felt this would be useful to the individual cities.

5.3 **2012 RTP/SCS Approach**

Naresh Amatya, SCAG staff, provided an overview of the 2012 RTP/SCS Approach document that was presented to SCAG's policy committees on January 6, 2011. Mr. Amatya stated that the approach is consistent with previous years with the addition of SB 375 and AB 32 requirements. This approach describes the process to develop the components of the 2012 RTP, including the incorporation of the SCS, and ensuring compliance with all federal and state requirements. It is meant to complement, not supersede, previously developed documents to guide this process.

Mark Butala, SCAG staff, then presented on the immediate next steps in the development of the RTP/SCS, specifically in regards to a recent request for data sent to city managers and a round of Data Gathering Workshops/Meetings to take place beginning in late January in each subregion.

Wally Siembab, South Bay Cities COG, commented that there are differing perspectives at the regional, subregional and city level. Mr. Siembab offered that officials at the subregional level could be useful in moving the process forward to their respective cities. Mr. Siembab also suggested that the sustainability planning tool be examined for its utility before moving forward with it. Sarah Jepson asked for clarification about the participants for the workshops. Mr. Butala stated the workshops will involve local planners and not elected officials.

5.4 **2012 RTP Baseline Transportation Projects**

Ryan Kuo, SCAG staff, presented a list of 2012 Regional Transportation Plan Baseline Transportation Projects. Mr. Kuo explained that in order to perform the conformity and EIR analyses as well as crafting a performance-based RTP, the development of a Baseline network of transportation projects for 2035 is required to be used as a scenario by which to measure Plan scenarios against. Toward that end, SCAG staff has prepared a draft project list guided by criteria found in the Transportation Conformity Guidelines.

Wally Siembab, South Bay Cities COG, asked if the list includes Measure R projects. Mr. Kuo explained that Measure R projects which met the criteria are included. Kevin Viera, Western Riverside COG, asked about the definition of “regionally significant highway and transit facilities.” Naresh Amatya, SCAG Staff, explained that any project that impacts regional transportation is defined as regionally significant. Ty Schuiling, SANBAG, indicated that he had concerns with some project details for projects in San Bernardino County. Nancy Pfeffer, Gateway Cities COG, asked if the committee will be asked to take action on the baseline list. Mr. Amatya explained that it is provided for informational purposes and that no specific action is requested from the committee; however, we are providing this so that agencies can check the list and inform us of any issues or errors.

Naomi Guth, City of Los Angeles, asked about potential enhancement to certain projects. Mr. Amatya explained that this goes beyond the scope of the Baseline list. The Baseline list is for informational purposes and captures those projects that meet the established criteria. This list will be used for a strictly technical exercise, and is independent of the RTP’s Constrained Project list which will be developed in a separate process. Greg Nord, OCTA, asked about the assumptions for the transit service levels and if it accounts for the cuts over past couple years. Mr. Kuo explained that the Baseline list is for a year 2035 scenario and that any changes made up to the 2011 FTIP are reflected in the information provided.

5.5 **2010 Census Results**

Frank Wen, SCAG Staff, presented an update on the 2010 Census results. Mr. Wen has reviewed the preliminary census data released to this point, which shows the the population of the United States was 308,745,538 on April 1, 2010. The population of the nation has increased by 9.7 percent, or 27,323,632 since 2000. California continues to be the most populous state with a population of 37,253,956. The population of California increased 10 percent by adding 3,382,308 to the 2000 population of 33,871,648. The 2010 Census population of California will result in a major impact on the California Department of Finance (DOF) population estimates. According to the DOF E-7 Report, the population of California is estimated at approximately 38,739,500 as of April 1 2010. The DOF estimate of California population is nearly 1.5 million higher than that of the 2010 Census. This difference in 2010 may require an adjustment to the future projected population, which was released by California DOF in 2007. With

the more accurate estimate of the domestic and international migration in the 2000s, the existing population projections of California might be subject to downward adjustment to reflect the accurate migration trends. The downward adjustment of population with possibly no change of households in 2010 might have a major implication for the increase in 2010 household formation level. California ranks second among all states in terms of the population change between 2000 and 2010, while Texas ranks first. However, California ranks 20th in terms of the percentage of population change during the same period. The share of California's population in 2010 remains 12 percent of the national population, which also means that California will not add or lose any Congressional seats.

6 **FUTURE AGENDA ITEMS**

February 2011

- Baseline Transportation System Performance Condition (Tarek Hatata and Naresh Amatya)
- Transit Performance Assessment (Tarek Hatata and Naresh Amatya)
- Corridor System Management Plans (CSMP) & Recommendations (Philip Law and Tarek Hatata)

7 **ADJOURNMENT**

The meeting adjourned at 4:03 p.m.

The next meeting of the Plans & Programs Technical Advisory Committee will be held on Wednesday, February 9, 2011 from 1:30pm to 3:30pm.



SOUTHERN CALIFORNIA ASSOCIATION of GOVERNMENTS


2012 RTP: Non-Motorized Transportation Plan Development

February 9, 2011

Margaret Lin
Associate Regional
Transportation Planner

Presentation Outline

- Vision, Goals and Objectives
- Draft Policy Framework
- Non-Motorized Transportation Chapter Outline
- Work Plan
- Schedule



Vision

Develop a comprehensive and interconnected network of bicycle and pedestrian facilities throughout the region to increase transportation options, so that bicycling and walking become more practical and desirable choices for travel.



Goals and Objectives

- Goal 1: Increase dedicated funding for bicycle and pedestrian infrastructure.
- Goal 2: Increase accommodation and planning for bicyclists and pedestrians.
- Goal 3: Increase transportation options, particularly for trips less than three miles.
- Goal 4: Significantly decrease bicycle and pedestrian fatalities and injuries.

Draft Policy Framework

- Support infrastructure development
- Develop analytical capabilities
- Coordinate with land use efforts
- Support local planning efforts



Non-Motorized Transportation Chapter

- Introduction
- Bicycling
- Walking
- Deficiencies and Needs
- Bicycle and Pedestrian Plan



Non-Motorized Transportation Chapter Schedule:

- February 2011:
 - Gather and analyze existing available data to describe existing conditions
 - Review and identify Non-Motorized Transportation strategies proposed in the 2011 FTIP, local transportation plans and county plans
- June 2011:
 - Identify and analyze potential alternatives
 - Complete projection analysis

Non-Motorized Transportation Chapter Schedule:

- August 2011:
 - Incorporate input from the SCAG Bike/Ped Wiki
 - Complete Draft Non-Motorized Transportation Chapter
- November 2011:
 - Draft RTP will be released for public review



For more information please contact

Margaret Lin
Associate Regional Transportation Planner
lin@scag.ca.gov

Please also visit the SCAG Bike/Ped Wiki:
<http://bikepedwiki.scag.ca.gov/>



SOUTHERN CALIFORNIA
ASSOCIATION of GOVERNMENTS
www.scag.ca.gov

NMT Advocates

- Michael Manville, UCLA
- Allison Yoh, UCLA
- Colleen Callahan, UCLA
- Herbie Huff, UCLA
- Mohja Rhoads, USC
- Ryan Snyder, Ryan Snyder Associates


Southern California Association of Governments 

2012 Regional Transportation Plan (RTP)

Transit Key Performance Indicators


Los Angeles, CA
January 2011

System Metrics Group, Inc.

Transit Key Performance Indicators 


- > **Ridership**
 - Total
 - Per capita
 - By mode
- > **Productivity**
 - Average load factors
 - Riders per hour of service provided
- > **Mobility**
 - Mobility Index (PMT x Speed)
 - Average modal speed
- > **Cost**
 - Effectiveness (i.e., cost per passenger boarding/mile traveled)
 - Efficiency (i.e., farebox recovery)

1 System Metrics Group, Inc.

SCAG Intercity Operators Analyzed 

Antelope Valley Transit Authority	Montebello Bus Lines
Beach Cities Transit	Norwalk Transit District
Culver CityBus	Omnitrans
Foothill Transit	Orange County Transportation Authority
Gardena Municipal Bus Lines	Riverside Transit Agency
Gold Coast Transit	Santa Clarita Transit
Imperial Valley Transit	City of Santa Monica Big Blue Bus
Long Beach Transit	SunLine Transit Agency
Los Angeles DOT – Commuter Express	Torrance Transit
Metro	Ventura Intercity Service Transit Authority
MetroLink	Victor Valley Transit Authority

2 System Metrics Group, Inc.




Key SCAG Region Trends

> **Ridership**

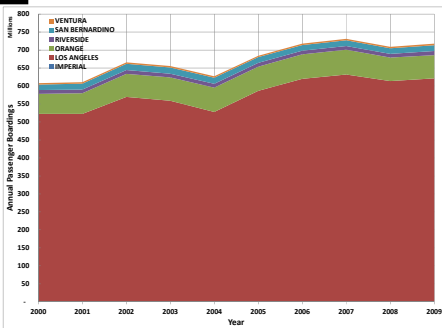
- Regional ridership has grown by nearly 20% since the year 2000 (1.9% per year)
- Per capita ridership has grown by 4% over the same period (mostly in LA County)
- Buses still carry the majority of transit trips (86% in 2009)
- MetroRail and Metrolink boardings have been growing by 6-8% per year since 2000
- Bus boardings have been growing slower at 1.4% per year, though BRT ridership has been steadily growing over last four years

3

System Metrics Group, Inc.




Total ridership has been increasing throughout the region

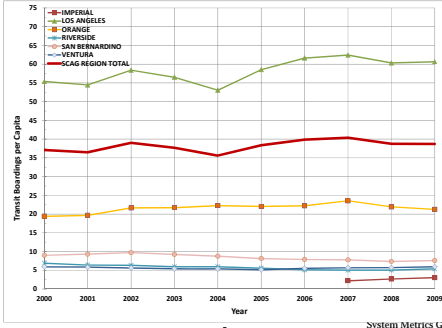


4

System Metrics Group, Inc.



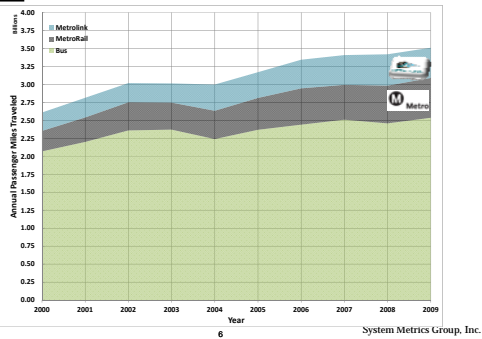
Per Capita boardings have also increased modestly meaning that the average person is using transit more frequently (4% more over 10 years)



5

System Metrics Group, Inc.

Passenger Miles Traveled (PMT) by mode (Bus, MetroRail, and Metrolink) have increased as well



System Metrics Group, Inc.

Key SCAG Region Trends



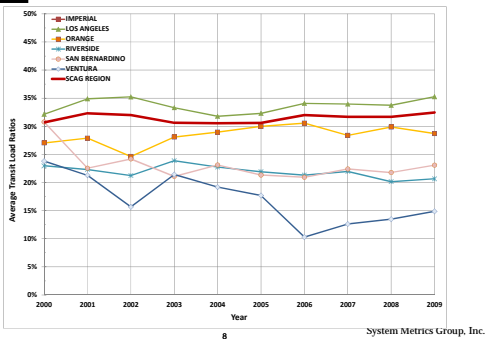
> Productivity

- Service hours up by 26 percent over the last 10 years, more than the increased ridership. In other words, incremental ridership for each additional service hour is actually decreasing slightly
- That is why the average vehicle load factors have remained steady near the coast (25-35%), but have declined slightly for the Inland Empire
- Passengers per service hour has declined steadily in every county except Ventura
- Only Metrolink has improved its productivity steadily over the past decade

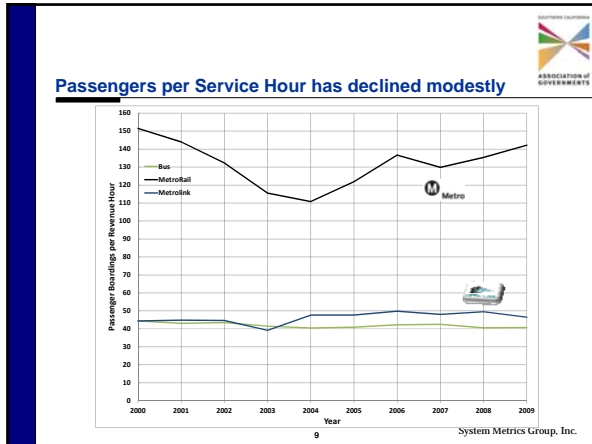
7

System Metrics Group, Inc.

Load factors have been relatively stable over time



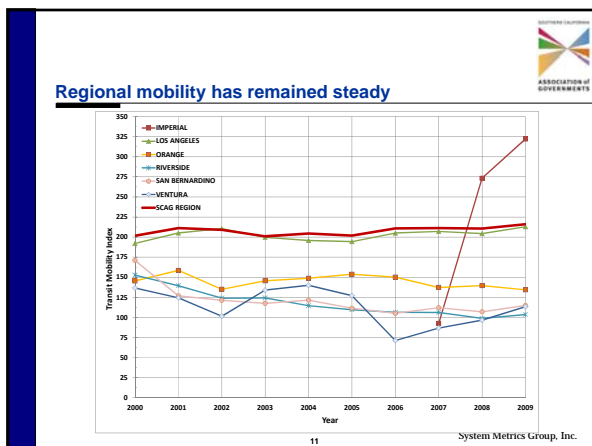
System Metrics Group, Inc.

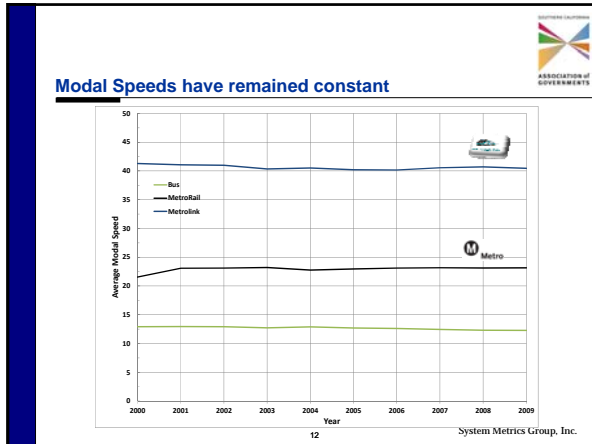


Key SCAG Region Trends (cont.)

- > **Mobility**
 - Los Angeles County shows slight mobility index improvements with declining trends in other counties
 - Modal speeds have remained constant since 2000

System Metrics Group, Inc.



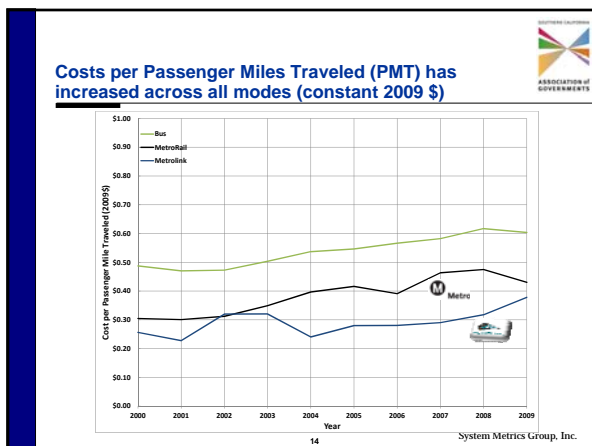


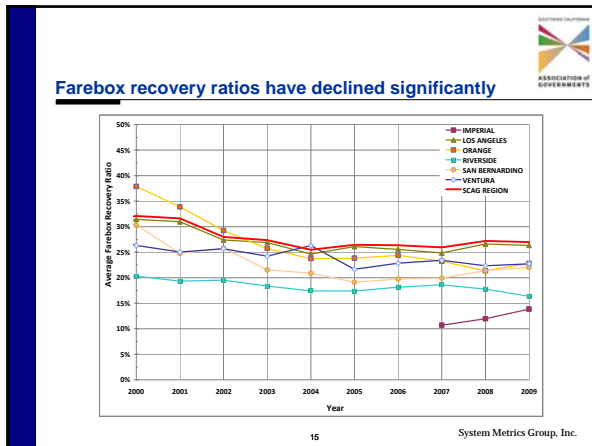
Key SCAG Region Trends (cont.)

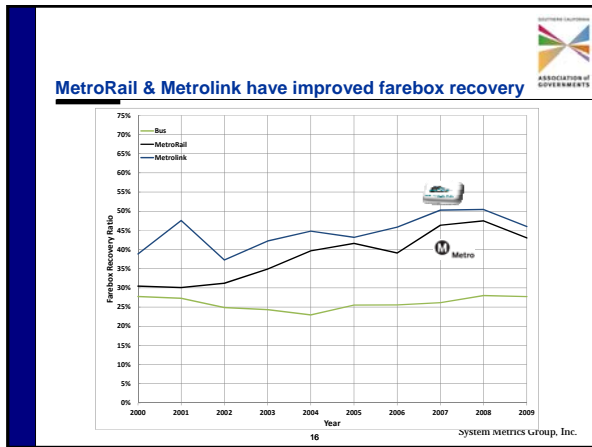
> Cost

- Each mode has shown cost per PMT increases over the past decade (Bus=24%, MetroRail=41%, Metrolink=48%) in constant dollars – the cost to provide service has outpaced inflation
- Farebox recovery ratios have declined since 2000 from 32% on average to 27%
- MetroRail and Metrolink farebox recovery ratios have increased over this same time frame with both exceeding 40%

System Metrics Group, Inc.








Conclusions

- > Transit ridership is trending in a positive direction – we should work to continue and improve on this trend
- > The costs associated with this increase in ridership are not sustainable in the long term – we must improve the productivity of our system and achieve higher ridership per service hour
- > RTP strategies such as land use and pricing should help achieve this goal

17 System Metrics Group, Inc.



SOUTHERN CALIFORNIA ASSOCIATION of GOVERNMENTS

2012 RTP Draft Transit Analysis

February 9, 2011 Steve Fox
Senior Regional Planner

2012 RTP Draft Transit Analysis

Goals

- Assess region's ability to attract and retain new transit riders
- Assess region's utilization of transit resources
- Show availability and connectivity to smart growth/TOD
- Show effects of the recession

2

2012 RTP Draft Transit Analysis

Components

- Reporting of Key Performance Indicators – 10-year trend
- Availability and connectivity analysis
- Recession analysis
- Effects of TOD and SB375 on transit

3

Operators

Antelope Valley Transit Authority	Montebello Bus Lines
Beach Cities Transit	Norwalk Transit District
Culver CityBus	Omnitrans
Foothill Transit	Orange County Transportation Authority
Gardena Municipal Bus Lines	Riverside Transit Agency
Gold Coast Transit	Santa Clarita Transit
Imperial Valley Transit	City of Santa Monica Big Blue Bus
Long Beach Transit	SunLine Transit Agency
Los Angeles DOT – Commuter Express	Torrance Transit
Metro	Ventura Intercity Service
Metrolink	Transit Authority
	Victor Valley Transit Authority

4

2012 RTP Draft Transit Element

Approach

- The State of the System – 22 Intercity Operators
- Our Regional Transit Vision
 - Constrained and Strategic Plans
- Transit Challenges
 - Funding
 - Land use
 - Choices and Incentives
- Needs Assessment and Strategy
 - Attracting New Riders
 - SB 375

5

Transit Analysis Methodology

- Intercity operators included in the analysis
- KPIs using NTD data from 2000-2009
- Availability and Connectivity using 2008 Transit Model Network
- Access defined as ½-mile for Rail, BRT and Express
- ¼-mile for Local Bus
- Headway subcategories: 0-15, 16-30, 31-60, >60

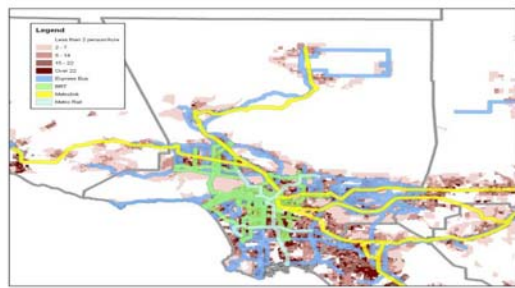
6

Availability and Connectivity Population and Employment



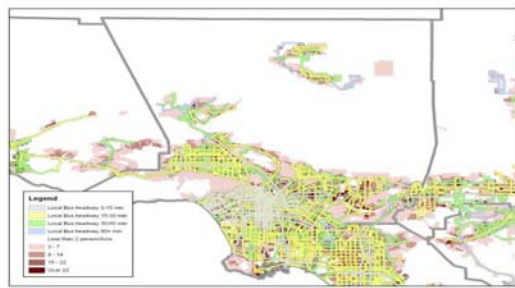
7

Los Angeles County Population

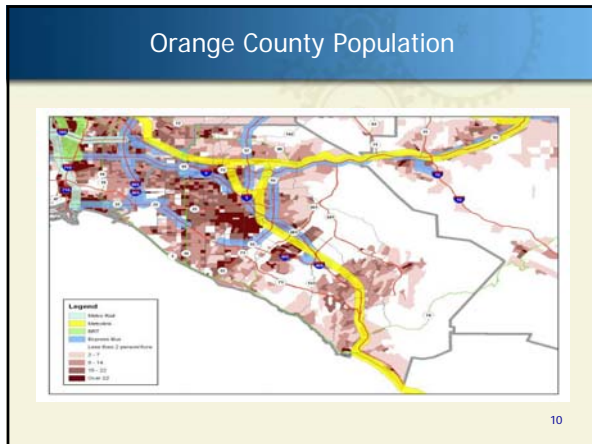


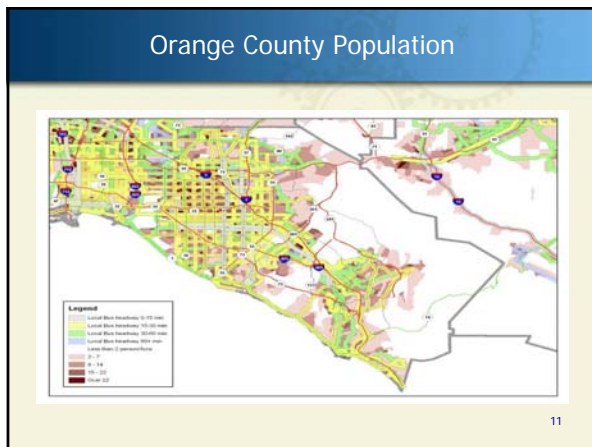
8

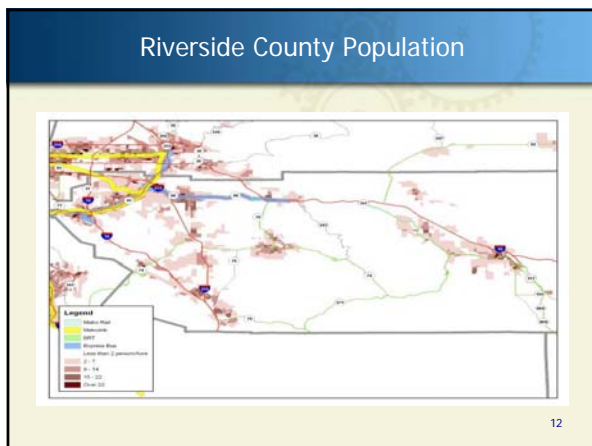
Los Angeles County Population



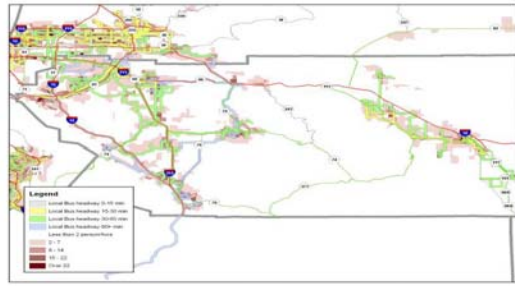
9





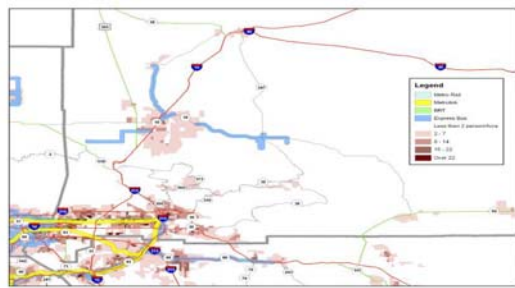


Riverside County Population



13

San Bernardino County Population

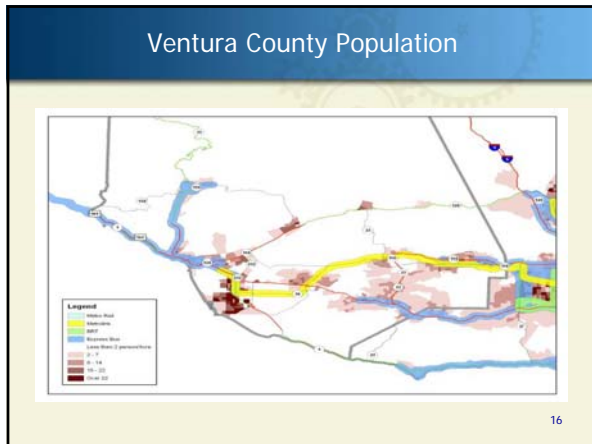


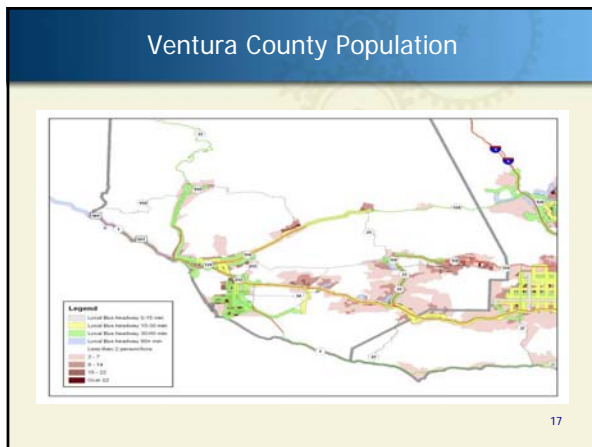
14

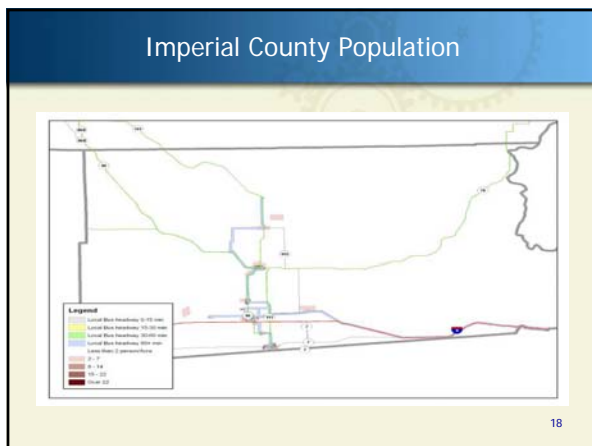
San Bernardino County Population



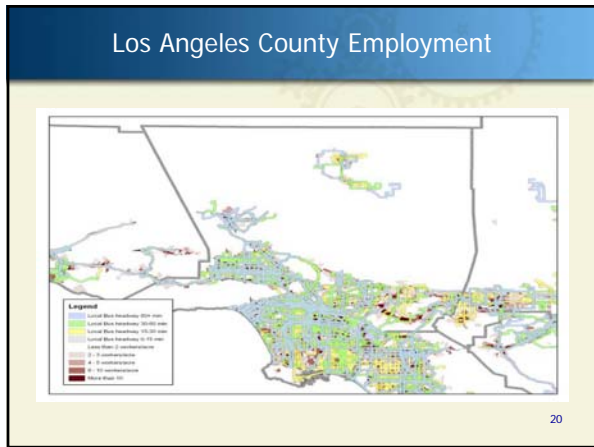
15

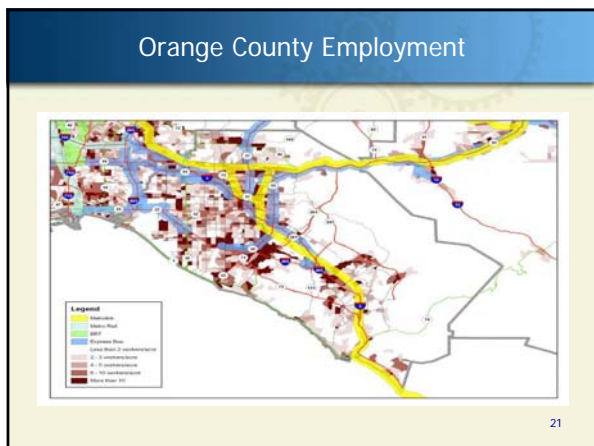




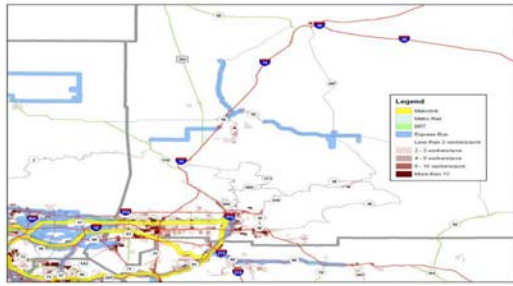








San Bernardino County Employment



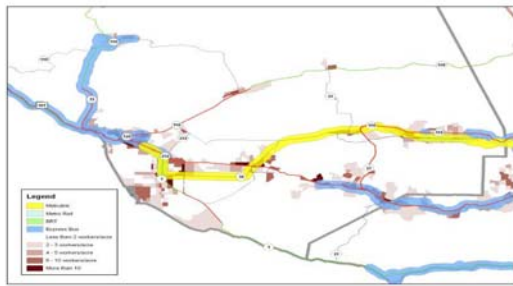
25

San Bernardino County Employment

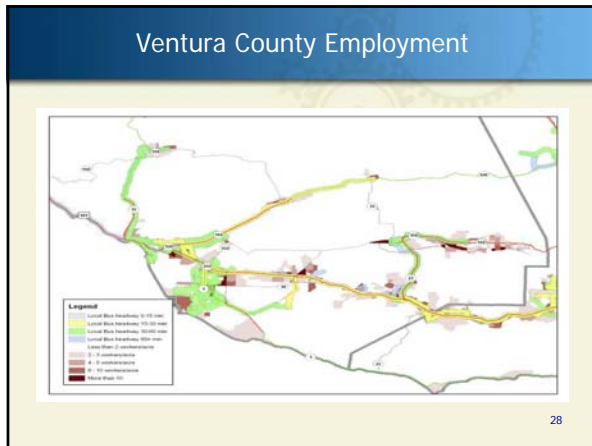


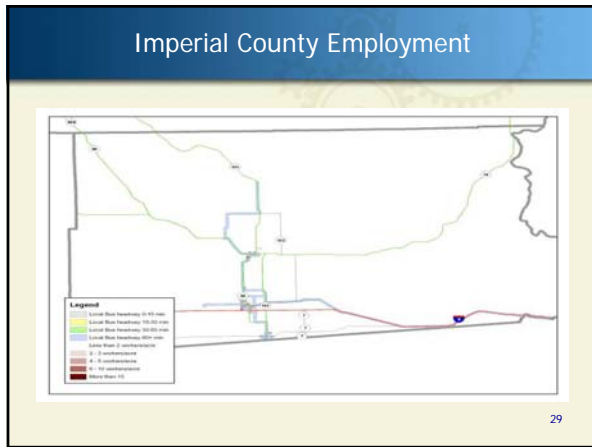
26

Ventura County Employment



27





Employment Availability

County	Los Angeles	Orange	Riverside	San Bernardino	Ventura	Imperial
Total Employment	4,335,967	1,624,000	663,540	700,003	347,730	61,504
Commuter Rail Employment	670,302	400,361	156,454	169,166	110,625	0
Availability	22.30%	27.74%	25.07%	24.15%	34.12%	0.00%
Heavy/Light Rail Employment	816,450	0	0	0	0	0
Availability	18.83%	0.00%	0.00%	0.00%	0.00%	0.00%
BRT Employment	2,204,346	0	0	0	0	0
Availability	50.84%	0.00%	0.00%	0.00%	0.00%	0.00%
Express Bus Employment	3,402,872	631,879	219,174	1,17,940	176,539	19,414
Availability	78.46%	39.89%	30.60%	16.26%	50.77%	31.57%
<15 Min Local Bus Employment	2,231,969	377,026	72,555	77,816	0	0
Availability	51.48%	23.21%	10.93%	11.11%	0.00%	0.00%
15 to 30 Min Local Bus Employment	3,940,937	1,626,306	250,960	406,293	159,941	0
Availability	90.89%	93.95%	37.00%	57.85%	46.00%	0.00%
31 to 60 Min Local Bus Employment	3,030,080	1,301,993	514,802	470,697	200,014	0
Availability	69.52%	80.07%	77.55%	67.17%	60.05%	0.00%
>60 Min Local Bus Employment	3,531,070	1,301,926	441,147	379,301	239,361	48,540
Availability	81.44%	80.14%	66.44%	54.14%	68.84%	79.92%

Notes:
 2008 Transit Network and Base Year
 1/2 Mile Buffer Except 1/4 Mile for Local Bus

30

Recession Analysis

However...

- Some Munis in "less-established" service areas had big increases in hours – 10% to 35%
- Not mirrored as much with boardings though
- Big Blue Bus boardings up 5% solely due to iPass
- Decreases in boardings due primarily to recession: unproductive service cut first
- Metro Rail continues to increase boardings during recession
- Metrolink down 6% - Highest fare increases

34

Conclusions

- Metrolink provides good regional coverage
- Metro Rapid provides excellent coverage in LA County, but shows need for BRT in other counties
- Rail and BRT services draw in new transit riders
- In absence of new capital facilities, increasing Local Bus frequencies is important
- Potential freeway Express corridors underserved

35

Please provide us feedback and comments for the analysis.

Steve Fox
Senior Regional Planner
213-236-1855
fox@scag.ca.gov

 **SOUTHERN CALIFORNIA
ASSOCIATION of GOVERNMENTS**
www.scag.ca.gov
