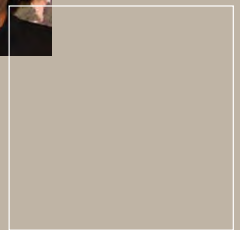


YOUR GUIDE TO SCAG



2009 – 2010



Southern California Association of Governments

Southern California Association of Governments



OUR VISION

An international and regional planning forum trusted for its leadership and inclusiveness in developing plans and policies for a sustainable Southern California.

OUR MISSION

Under the guidance of the Regional Council and in collaboration with our partners, our mission is to facilitate a forum to develop and foster the realization of regional plans that improve the quality of life for Southern Californians.



Message from the President 1

Over Forty Years of Resolving
Regional Challenges 3

The Region in Action 7

Working with the Subregions 11

Public Involvement 13

Key Initiatives..... 17

Partners in Planning and Funding Sources..... 25

Frequently Asked Questions 27

Presentations to Your
Organization or Community 33

Contacting SCAG 35

Regional Council Districts..... 36

Members..... 39

Regional Council Members 41

MESSAGE FROM THE PRESIDENT



THE SCAG REGION

The Southern California Association of Governments is the nation's largest metropolitan planning organization and council of governments, representing six counties, 189 cities and 19 million residents.



For more than 40 years the agency's regional planning work in transportation, land use and air quality has been aimed at developing policies and initiatives that encourage a more sustainable Southern California and enhance our overall quality of life. That commitment has not changed.

What has changed at SCAG is our approach to doing business. We have new executive leadership. We have adopted a dynamic and meaningful Strategic Plan that clearly articulates our new vision, mission, goals and values. We have opened and staffed regional offices in each county we serve, improving our outreach and service to our members. We are in an era of unprecedented collaboration with our partners: the citizens of our region, member agencies, county transportation commissions and elected and government officials from Sacramento to Washington, D.C. At the new SCAG you will find an energized, engaged Regional Council and a professional, customer service-focused staff motivated by the significant challenges facing our region.

In the pages of this Guide you will find information about the agency's history, key initiatives and more. Feel free to contact us if you need additional information. We are here to serve you.

A handwritten signature in black ink that reads "Jon A. Edney". The signature is written in a cursive style.

Hon. Jon A. Edney

SCAG President
Councilmember, City of El Centro

OVER FORTY YEARS OF RESOLVING REGIONAL CHALLENGES



BACKGROUND

SCAG was founded on October 28, 1965, when local elected officials from 56 cities and five counties first convened to begin regional planning for Southern California's future. SCAG has been designated a joint powers authority (JPA) established under California law, meaning that it is an association of local governments and agencies that voluntarily come together on issues of common concern.

SCAG is mandated by the federal and state government to develop regional plans for transportation, growth management, housing development, air quality and other issues of regional significance. SCAG expanded the Executive Committee in 1992 to a 70-member Regional Council to help accommodate new responsibilities mandated by the federal and state government, as well as to provide more broad-based representation of Southern California's cities and counties. With its expanded membership structure, SCAG created regional districts to provide for a more diverse representation. The districts were formed with the idea of serving equal populations and communities of interest.

In addition to the six counties and 189 cities that make up SCAG's region, there are five County Transportation Commissions and the Imperial Valley Association of Governments, that hold the primary responsibility for programming and administering transportation projects, programs and services in their respective counties. Additionally, SCAG bylaws provide Native American tribes a formal voice in the regional planning process, including representation on the Regional Council and policy committees.

OVER FORTY YEARS OF RESOLVING REGIONAL CHALLENGES (Cont.)

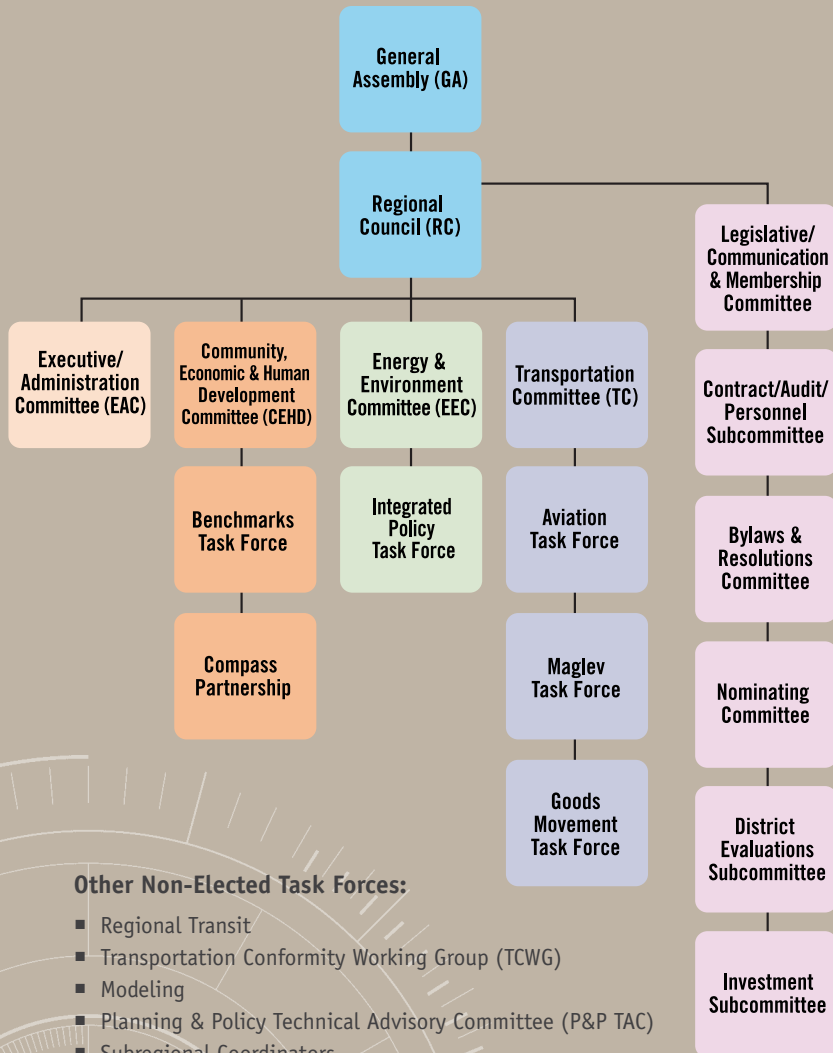


THE MANY FACES OF REGIONAL PLANNING

Under federal and state law, SCAG is designated as a Metropolitan Planning Organization (MPO), a Regional Transportation Planning Agency (RTPA) and a Council of Governments (COG). In these roles, SCAG is responsible for identifying Southern California's transportation priorities through development of Regional Transportation Plans.

SCAG has many other roles and authorities to develop short- and long-term regional plans for transportation, housing and air quality that conform to state and federal standards. SCAG is charged under State law with performing the allocation of regional housing needs for the implementation of the state Regional Housing Needs Assessment program. SCAG conducts extensive growth forecasting and provides local governments with critical land use and demographic data to strengthen their planning efforts.

SCAG employs planners, policy formulators, forecasters and other expert staff to undertake its various initiatives intended to address many of the policy and planning challenges facing Southern California.



Other Non-Elected Task Forces:

- Regional Transit
- Transportation Conformity Working Group (TCWG)
- Modeling
- Planning & Policy Technical Advisory Committee (P&P TAC)
- Subregional Coordinators
- Aviation Technical Advisory Committee (ATAC)
- Regionally Significant Transportation Investment Study (RSTIS)

REGIONAL COUNCIL COMMITTEES AND TASK FORCES*

*Subcommittees and Task Forces are subject to change

General Assembly (GA) – SCAG is governed by the General Assembly, which annually brings together the official representatives of SCAG’s membership and helps set the agency’s course for the coming year. It is in this forum where policy matters can be identified and addressed. Amendments to SCAG’s Bylaws also may be considered at the General Assembly. In addition, members of the General Assembly consider adoption of SCAG’s General Fund budget for the next fiscal year. Finally, SCAG’s incoming President, Vice President and Second Vice President are elected.

Regional Council (RC) – Decision-making occurs through SCAG’s Regional Council, a governing body comprised of elected officials representing the six counties and 189 cities in the SCAG region. The board may also include representatives from each of the County Transportation Commissions and the recognized tribal governments. SCAG’s policy-making process is guided by the work of three Policy Committees: Transportation; Community, Economic and Human Development; and Energy and Environment, and its operations are managed by the Executive/Administration Committee. Members of the Regional Council serve on one of three policy committees for two-year terms. Much of the discussion and debate on the “nuts and bolts” of an issue occurs in the policy committees, and all issues considered by the Regional Council must first originate through one or more of the committees. In addition to Regional Councilmembers, policy committees also include members from stakeholder organizations throughout the region.

Transportation Committee (TC) – The TC examines regional policies, programs and other matters pertaining to roads and highways, transit, airports and seaports and other aspects of Southern California’s transportation system.

Community, Economic and Human Development Committee (CEHD) – The CEHD oversees the agency’s efforts to develop regional policies for housing, economic development, land use, growth forecasting and other community development needs.

THE REGION IN ACTION (Cont.)



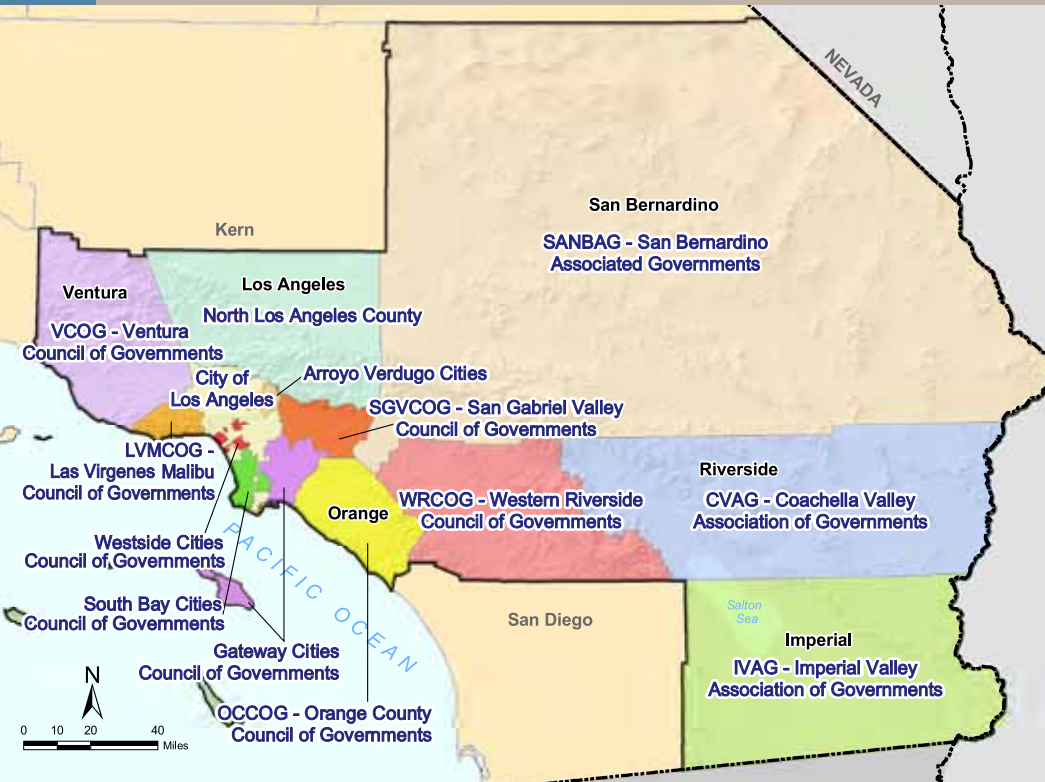
Energy and Environment Committee (EEC) – The EEC considers environmental and energy-related issues of regional significance, including air and water quality, solid and hazardous waste, habitat preservation, environmental justice and environmental impact analysis.

Executive/Administration Committee (EAC) – In addition to the policy committees, SCAG's core leadership team is represented by the EAC. In addition to their critical position in guiding SCAG's regional decision-making process, EAC members play an elevated role as SCAG representatives throughout the region as well as at the state and federal levels. The EAC also deals with matters regarding human resources, budgets, finance, operations, communications and any other matter referred by the Regional Council. Membership primarily includes SCAG officers, policy committee chairs and vice chairs.

Policy Task Forces/Subcommittees – In addition to the three policy committees, the Regional Council has established a number of task forces and subcommittees to provide more focused attention to specific policy or planning issues including:

- Aviation Task Force
- Benchmarks Task Force
- Bylaws Committee
- Compass Partnership
- Contract/Audit/Personnel Subcommittee
- Council Development/Nominating Committee
- District Evaluations Subcommittee
- Goods Movement Task Force
- Investment Subcommittee
- Legislative/Communication and Membership Committee
- Maglev Task Force
- Modeling Task Force
- Integrated Policy Task Force

WORKING WITH THE SUBREGIONS



SCAG'S 14 SUBREGIONS

In 1992, when representation on the Regional Council was expanded from the original Executive Committee, SCAG adopted a more inclusive, collaborative approach to planning by fostering the development of subregional organizations that would represent smaller segments within Southern California. Fourteen subregions were created to represent portions of Southern California with shared interests, issues and geography. Some subregions are very active and organized, acting as their own Councils of Government. Other subregions, while involved in regional activities, may not have the same type of organizational structure. SCAG provides funding and assistance to the subregions to facilitate a more collaborative regional planning effort.

Subregions play a vital role as a conduit between SCAG and the cities and counties of the region by participating and providing input in all of SCAG's planning activities. With the input and participation received from the subregions, the Regional Council and its committees make better-informed decisions.

SCAG produces **Local Profiles** for each SCAG member jurisdiction. The profiles are a free member service and are intended to provide jurisdictions with updated data and analysis to enhance local planning efforts. The profiles also recognize communities that have volunteered to participate in the Compass Blueprint Demonstration Program, which showcases innovations in integrating land use and transportation planning that serve both local needs and regional goals. The profiles include data and supporting narrative in the following categories:

1. Population (e.g., growth, age distribution, ethnic composition)
2. Households (e.g., household size, household income distribution)
3. Housing (e.g., median home price)
4. Employment (e.g., jobs by sector, average salary per job)
5. Retail Sales (e.g., retail sales per person)
6. Education (e.g., school enrollment)

PUBLIC INVOLVEMENT



The public plays a key role in every aspect of SCAG's regional planning efforts. SCAG implements a public involvement process to provide complete information, timely public notice and full public access to key decisions and to support early and continuing public involvement in developing its regional plans. Furthermore, SCAG seeks to ensure that diverse and low-income populations are involved in the regional planning process. There are a variety of ways to become involved, including:

Citizen Review and Feedback – SCAG regularly circulates its *Regional Transportation Plan (RTP)*, *Regional Transportation Improvement Program (RTIP)*, *Overall Work Program (OWP)* and its other regional initiatives for extensive public review and feedback. SCAG regularly hosts conferences, workshops and other public forums where the public is encouraged to attend and interact with SCAG decision-makers and policy experts.

Public Comments – SCAG welcomes the public to address the Regional Council and Policy Committees at the beginning of every monthly meeting and other open, public meetings.

Regional Representation – SCAG's entire policy-making process is based on a structure that accommodates Southern California's unique size and diversity. Local elected officials throughout Southern California serve on SCAG's Regional Council to represent one or more communities within the region. To find out who serves on the Regional Council, please visit www.scag.ca.gov/committees/rc_about.htm.

To request a SCAG presentation to your organization or community, please see page 35.

On-line Public Access – SCAG’s Web site, www.scag.ca.gov, serves as the comprehensive source for all of SCAG’s current and recent regional planning initiatives.

You will find agendas for Regional Council and policy committee meetings, policy fact sheets and other informational resources. On the “Get Involved” page, SCAG encourages public involvement through its survey on important issues in Southern California, a Public Participation Form and a Calendar of upcoming SCAG events.

In addition to the Web site, SCAG produces the **SCAG UPDATE** and **SCAG SPOTLIGHT** electronic newsletters that provide regular updates on current SCAG planning initiatives, legislative efforts, upcoming events and other information of interest to Southern Californians. If you would like to view SCAG’s latest e-newsletters please visit our publications page on the SCAG Web site, www.scag.ca.gov/publications/index.htm.

To help expand awareness of SCAG and broaden interest in its regional planning work, SCAG is active on social networking sites. You can find SCAG on Facebook and you can follow the agency on Twitter at SCAG_ED.



AIR QUALITY

Air quality remains a serious issue in Southern California and SCAG continues to work closely with its regional partners including the California Air Resources Board (ARB) and the South Coast Air Quality Management District (AQMD) to help clear the region's air. SCAG plays an integral role in air quality planning by providing transportation activity and socioeconomic data to local air districts and ARB for numerous non-attainment areas in the SCAG region including the South Coast Air Basin, the Ventura County portion of the South Central Coast Air Basin, Mojave Desert Air Basin and the Coachella Valley and Imperial County portions of the Salton Sea Air Basin. These data are used to update on-road emissions models and to develop State Implementation Plans (SIP).

SCAG also is responsible for preparation of conformity determinations for the Regional Transportation Plan (RTP) and Regional Transportation Improvement Program (RTIP). Transportation conformity is required under the federal Clean Air Act to ensure that federally supported highway and transit project activities conform to the purpose of the SIP. Conformity analysis is a complicated and challenging endeavor requiring detailed data collection, computer modeling, extensive inter-agency coordination and technical analysis. Conformity rules currently apply to 13 areas in the SCAG region and each requires its own conformity determination. SCAG works with regional partner agencies and state and federal agencies to resolve numerous difficult issues in preparing the conformity analysis.



CALIFORNIA'S SUSTAINABLE COMMUNITIES AND CLIMATE PROTECTION ACT (SB 375)

The **Sustainable Communities and Climate Protection Act (SB 375)** is the nation's first law to control greenhouse gas emissions (GHG) by curbing the sprawl of development. For California to reach its greenhouse gas reduction goals, we must address how our communities grow. This law directs the Air Resource Board to set greenhouse gas reduction targets for regions of the state and work with California's 18 metropolitan planning organizations (MPOs) to align their transportation, housing, and regional land-use plans with greenhouse gas reductions in mind.

Each MPO is required to include a "Sustainable Communities Strategy" in the regional transportation plan that demonstrates how the region will meet the greenhouse gas emission targets. If the SCS falls short of meeting the targets, the region must prepare an "alternative planning strategy" that, if implemented, would meet the targets.

SCAG plans to develop and finalize a **Sustainable Communities Strategy (SCS)** as part of the 2012 Regional Transportation Plan. This strategy will emerge through extensive dialogue and collaboration involving SCAG, its 14 subregions, member jurisdictions, County Transportation Commissions (CTCs) and a variety of other stakeholders and participants including the general public. Through this process, SCAG is striving to build partnerships and collaboration so that the completed regional SCS embodies the region's collective vision for its future.

CLIMATE CHANGE AND THE FUTURE OF SOUTHERN CALIFORNIA

Climate Change and the Future of Southern California introduces readers to the scenarios, impacts and potential responses regarding climate change. Written mainly from the perspective of Southern California, a primary objective



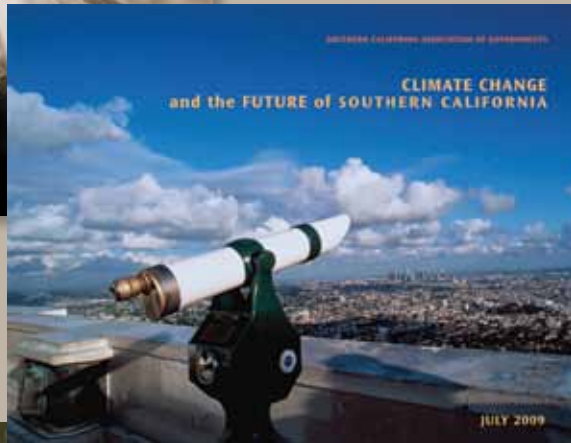
of this set of essays is to disseminate information and perspectives about climate change, particularly with respect to its impacts under various scenarios and to illustrate how Southern California can respond to address this global challenge and facilitate constructive policy dialogues and action.

COMPASS BLUEPRINT

SCAG's **Compass Blueprint** initiative is the leading forum for discussion of innovative planning that integrates land use and transportation decision-making. Cities, counties and others are invited to submit proposals to become a Demonstration Community as they seek creative, forward-thinking and sustainable development solutions that fit local needs and support shared regional values. Compass Blueprint's primary focus is to provide custom planning services to local governments and stakeholders. SCAG's Demonstration Projects program has partnered with more than 60 SCAG member jurisdictions on planning efforts that address local priorities and advance the regional vision of mobility, livability, prosperity and sustainability. With these projects, SCAG supplies free consultant services and sophisticated planning tools. In November 2007, SCAG kicked off Toolbox Tuesdays. This series of free monthly training classes engages the planning staff of member jurisdictions and partner agencies to develop local-level capacity for using the sophisticated software tools at the heart of the Compass Blueprint "Suite of Services."

GOODS MOVEMENT

Goods movement activities provide substantial economic benefits in Southern California and can have enormous impacts on the regional transportation system, public health, the environment and quality of life for area residents. SCAG continues its participation in the development of the **Multi-County Goods Movement Action Plan** (MCGMAP) led by Los Angeles County Metropolitan



Transportation Authority (LACMTA). The MCGMAP identifies actions, strategies and specific next steps to improve the movement of goods throughout the region while mitigating negative impacts.

REGIONAL COMPREHENSIVE PLAN

SCAG develops Southern California's *Regional Comprehensive Plan* (RCP) as a planning framework for the development and implementation of guidelines applied to both the public and private sectors. The RCP functions as a voluntary "toolbox" to assist local jurisdictions in making their General and Specific plans, as well as individual projects more sustainable. The plan includes chapters on areas such as land use and housing, open space, energy, air quality and economy.

REGIONAL TRANSPORTATION PLAN

In accordance with federal and state laws, SCAG develops a *Regional Transportation Plan* (RTP) every four years. The RTP provides Southern California with a long-range transportation vision and long-term investment framework for addressing the region's transportation and related challenges.

The RTP combines transportation policies and projects to:

- Maximize mobility and accessibility throughout Southern California
- Preserve and ensure a sustainable regional transportation system
- Protect the environment, improve air quality and improve energy efficiency
- Coordinate land use and transportation investments
- Ensure travel safety, security and reliability of our transportation system

PARTNERS IN PLANNING AND FUNDING SOURCES



A core objective behind SCAG’s planning and policy initiatives involves close collaboration with partner organizations at the federal, state and local levels.

LOCAL PARTNERS

- Transportation Commissions
- Air Quality Management Districts

STATE PARTNERS

- Department of Transportation (Caltrans)
- California Council of Governments
- California Transportation Commission
- California Air Resources Board
- Business Transportation & Housing

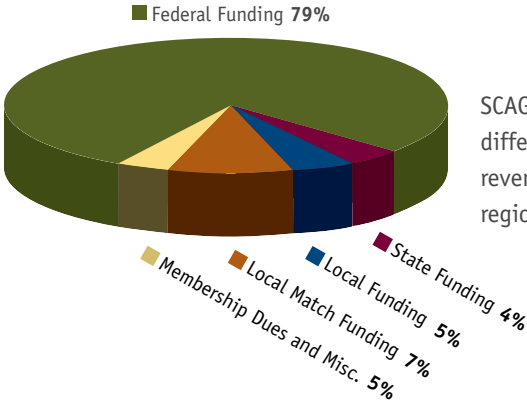
FEDERAL PARTNERS

- Federal Highway Administration
- Federal Transit Administration
- Environmental Protection Agency
- Housing & Urban Development
- Federal Aviation Administration
- Federal Railroad Administration
- U.S. Department of Transportation

COMMUNITY PARTNERS

- Planning Organizations
- Transportation Organizations
- Subregions
- Tribal Governments
- General Public

SCAG Funding Sources



SCAG is funded by a number of different federal, state and local revenues to undertake its critical regional initiatives.





WHAT IS A COUNCIL OF GOVERNMENTS?

A **Council of Governments** (COG) is a Joint Powers Authority (JPA) that provides a network for local governments to identify and solve local community problems. A COG is comprised of a volunteer Board of Directors representing all areas of the community including elected leaders, educators, business, social services, water quality and many others. In addition to the authority that is created through their member cities and counties, a Council of Governments also carries out state and federal statutory duties. While the exact combination of duties varies from region to region, two of the more formal roles include serving as the Regional Transportation Planning Agency under state law and as the federal Metropolitan Planning Organization (MPO).

WHAT IS A CTC?

A CTC could be one of two things. First, there are the **County Transportation Commissions** that are responsible for building transportation projects. The CTCs in the SCAG region are the Los Angeles County Metropolitan Transportation Authority (LACMTA); the Orange County Transportation Authority (OCTA); the Riverside County Transportation Commission (RCTC); the San Bernardino Associated Governments (SANBAG); and the Ventura County Transportation Commission (VCTC). The Imperial Valley Association of Governments (IVAG) provides the CTC functions for Imperial County. The second CTC is the **California Transportation Commission** that is responsible for reviewing statewide transportation activities and approving the State Transportation Improvement Program.

WHAT IS A JOINT POWERS AUTHORITY?

Joint Powers Authorities (JPAs) are formed by any two or more governmental entities (federal, state or local) to provide a common service. Many are financing tools that let governmental agencies pool their scarce resources. Some run programs jointly.

WHAT IS AN MPO?

A **Metropolitan Planning Organization** is mandated by the federal government to develop plans for transportation, growth management, hazardous waste management and air quality. An MPO must have a “continuing, cooperative and comprehensive” transportation planning process that results in plans and programs consistent with the comprehensively planned development of its corresponding urbanized area. Only one MPO is designated for each urbanized area.

WHAT IS THE OWP?

Each fiscal year, SCAG establishes an **Overall Work Program** that details the agency’s planning and budgetary priorities for the next fiscal year. SCAG’s federal and state funding partners – Federal Highway Administration, Federal Transit Administration and California Department of Transportation (Caltrans) – must approve SCAG’s OWP each year before it can take effect.

WHAT IS THE RCP?

The **Regional Comprehensive Plan** is similar to a General Plan for the region and is in fact intended to function as a voluntary toolbox to assist cities and counties in developing General and Specific plans. To that end, the RCP includes nine chapters: energy, air quality, water, open space, solid waste, transportation, economy, land use and housing and education, each with specific goals and outcomes designed to help set the path toward a more sustainable region. The RCP includes “best practices” and innovative new ideas that individual jurisdictions can include in their own plans.

WHAT IS THE RHNA?

The **Regional Housing Needs Assessment** is a state-mandated planning effort conducted by SCAG. It is performed every five years and serves as the starting point for the local housing element update process. SCAG, along with its subregions, determines each jurisdiction’s “fair share” of the region’s housing need. Local governments, in turn, plan to accommodate that need by preparing individual Housing Elements.

WHAT IS THE RTIP?

The SCAG **Regional Transportation Improvement Program** is a listing of proposed transportation projects to be funded through a variety of federal, state and local sources over the next six years. SCAG receives lists of proposed projects from county transportation commissions. SCAG assembles the project list and conducts air quality, financial and “highway gap” analysis. Federal and state laws require that the RTIP be consistent with the RTP and meet air quality requirements. All transportation projects that are federally or state funded, or have an air quality impact must be included in the RTIP. The RTIP, which is updated every two years, works much like a Capital Improvement Program in a city or county.

WHAT IS THE RTP?

Federal and state laws require SCAG to prepare a long-range **Regional Transportation Plan** every four years. The RTP combines transportation policies and projects to:

- Address mobility and congestion throughout Southern California
- Coordinate a balanced regional transportation system
- Identify adequate funding for transportation projects
- Meet federal air quality requirements

The RTP presents a 30-year transportation vision for the region and provides a long-term investment framework for addressing the region's transportation and related challenges. The RTP addresses all modes of transportation including highway and transit projects and high-speed regional transport. Projects must be included in the RTP to be eligible for state and federal funding.

WHAT IS AN RTPA?

An RTPA is a **Regional Transportation Planning Agency**. It is a state designation for agencies (e.g., a local transportation commission, a statutorily created RTPA or Council of Governments) required to develop Regional Transportation Plans (RTPs) for their respective area. Sixteen of California's 43 RTPAs are also MPOs.

WHAT IS SAFETEA-LU?

The **Safe, Accountable, Flexible, Efficient Transportation Equity Act: A Legacy for Users**, known as SAFETEA-LU is the primary federal transportation authorization measure enacted in 2005 that provides approximately \$286.4 billion over a five-year period for transportation projects and programs. The President signed SAFETEA-LU into law on August 10, 2005, reauthorizing the original Intermodal Surface Transportation Efficiency Act (ISTEA) of 1991 and its successor, the Transportation Equity Act for the 21st Century (TEA-21) enacted in 1998.

WHAT IS SB 375?

SB 375 is California state legislation that requires the development of regional reduction targets for greenhouse gas emissions in long-range regional planning for land-use, housing and transportation. The legislation requires SCAG to direct the development of a Sustainable Communities Strategy (SCS) for the region. If the state-determined targets cannot be identified and met through the SCS, an Alternative Planning Strategy (APS) can be developed and employed in its place. Additionally, unique to the SCAG region, is the stipulation that subregions can choose to create their own SCS/APS. SB 375 aims to reduce Vehicle Miles Traveled (VMT) and encourage live/work and sustainable development for the future. SCAG has hosted workshops and conducted focused stakeholder discussions around the region to discuss SB 375 and its impact on the Regional Transportation Plan process. SCAG participates in the Regional Targets Advisory Committee, which is the committee responsible for developing the reduction targets for each of the 18 regions in the state. SCAG will continue to conduct outreach to local agencies and the general public about the new law and its implications for future planning.

PRESENTATIONS TO YOUR ORGANIZATION OR COMMUNITY



SCAG is available to conduct presentations in your community. Each presentation can be tailored to address a specific area of concern or provide a general overview of how SCAG works on many important issues that affect our quality of life.

Here are a few topics that SCAG can address:

- **Air Quality** – Strategies for reducing Greenhouse Gases and emissions
- **Compass Blueprint** – A suite of planning tools and services offered free-of-charge to cities, counties and subregions that seek innovative ways to integrate transportation and land use to accommodate future growth
- **Goods Movement in Southern California** – The important role that goods movement and the logistics industry play in our regional economy
- **Regional Comprehensive Plan** – A vision of how Southern California can balance resource conservation, economic vitality and quality of life
- **Regional Transportation Plan** – A transportation plan with local and regional implications that addresses congestion concerns, identifies funding options and coordinates mobility throughout the region
- **SB 375 and Sustainable Communities Strategy** – Provide a clear understanding of issues and policy choices as they relate to growth and development patterns, the transportation network, and transportation policies for the entire region
- **Transportation Funding** – The lack of funding to maintain our aging infrastructure, what SCAG is doing to help overcome it and what you can do to help make your opinions known

To request a SCAG presentation to your organization or community, please see page 35.

LOCATIONS

Main Office

818 West Seventh Street, 12th Floor
Los Angeles, CA 90017
tel: (213) 236-1800
fax: (213) 236-1961

Matt Horton (213) 236-1980
or horton@scag.ca.gov
Linda Jones (213) 236-1912
or jonesl@scag.ca.gov

County Regional Offices

Imperial

1224 West State Street, Suite B
El Centro, CA 92243
tel: (760) 353-7800
fax: (760) 353-1877

Rosanna Bayon Moore (213) 236-1967
or moorer@scag.ca.gov

Orange

600 South Main Street, Suite 906
Orange, CA 92863
tel: (714) 542-3687
fax: (714) 560-5089

Tiffany Delepine (213) 236-1811
or delepine@scag.ca.gov

Riverside

3403 10th Street, Suite 805
Riverside, CA 92501
tel: (951) 784-1513
fax: (951) 784-3925

Arnold San Miguel (213) 236-1925
or sanmiguel@scag.ca.gov

San Bernardino

1170 West 3rd Street, Suite 140
San Bernardino, CA 92418
tel: (909) 806-3556
fax: (909) 806-3572

Arnold San Miguel (213) 236-1925
or sanmiguel@scag.ca.gov

Ventura

950 County Square Drive, Suite 101
Ventura, CA 93003
tel: (805) 642-2800
fax: (805) 642-2260

John Procter (213) 236-1965
or procter@scag.ca.gov

Visit our Web site, www.scag.ca.gov

For more information about SCAG or to schedule a customized presentation for your organization, please contact:

Brian K. Williams, Director of Government, Regional & Public Affairs
(213) 236-1814
or williams@scag.ca.gov

Please direct all media inquiries to:

Angela Rushen, Manager of Media & Public Affairs
(213) 236-1809
or rushen@scag.ca.gov

For matters related to the following policy committees and the Regional Council please contact:

Community, Economic & Human Development Committee (CEHD)

Jane Embry
(213) 236-1826
or embry@scag.ca.gov

Energy & Environment Committee (EEC)

Cathy Alvarado
(213) 236-1896
or alvarado@scag.ca.gov

Executive/Administration Committee (EAC)

Carmen Summers
(213) 236-1984
or summers@scag.ca.gov

Regional Council (RC)

Shelia Stewart
(213) 236-1868
or stewart@scag.ca.gov

Transportation Committee (TC)

Mariana Pulido
(213) 236-1881
or pulido@scag.ca.gov

CREDITS Art Director: Carolyn Hart Designer: Étsuko Iseki
Editors: Joann Africa, Javier Minjares, Angela Rushen, Shelia Stewart

District # 1
IVAG

1. Brawley
2. Calexico
3. Calipatria
4. El Centro
5. Holtville
6. Imperial
7. Westmorland

District # 2
CVAG

1. Cathedral City
2. Desert Hot Springs
3. Indian Wells
4. Palm Desert
5. Palm Springs
6. Rancho Mirage

District # 3
WRCOG

1. Banning
2. Beaumont
3. Calimesa
4. Moreno Valley
5. Perris

District # 4
WRCOG

1. Riverside
2. Norco

District # 5
WRCOG

1. Hemet
2. Murrieta
3. San Jacinto
4. Temecula

District # 6
SANBAG

1. Colton
2. Grand Terrace
3. Loma Linda
4. Redlands
5. Yucaipa

District # 7
SANBAG

1. Highland
2. San Bernardino

District # 8
SANBAG

1. Fontana
2. Rialto

District # 9
SANBAG

1. Montclair
2. Rancho Cucamonga
3. Upland

District # 10
SANBAG

1. Chino
2. Chino Hills
3. Ontario

District # 11
SANBAG

1. Barstow
2. Big Bear Lake
3. Needles
4. Twentynine Palms
5. Yucca Valley

District # 12
OCCOG

1. Aliso Viejo
2. Dana Point
3. Laguna Beach
4. Laguna Niguel
5. San Clemente
6. San Juan Capistrano

District # 13
OCCOG

1. Laguna Hills
2. Laguna Woods
3. Lake Forest
4. Mission Viejo
5. Rancho Santa Margarita

District # 14
OCCOG

1. Irvine

District # 15
OCCOG

1. Costa Mesa
2. Fountain Valley
3. Newport Beach

District # 16
OCCOG

1. Santa Ana

District # 17
OCCOG

1. Orange
2. Tustin
3. Villa Park

District # 18
OCCOG

1. Cypress
2. Garden Grove
3. La Palma

District # 19
OCCOG

1. Anaheim

District # 20
OCCOG

1. Los Alamitos
2. Seal Beach
3. Stanton
4. Westminster

District # 21
OCCOG

1. Buena Park
2. Fullerton

District # 22
OCCOG

1. Brea
2. La Habra
3. Placentia
4. Yorba Linda

District # 23
Gateway Cities COG

1. Artesia
2. Cerritos
3. Hawaiian Gardens
4. Norwalk

District # 24
Gateway Cities COG

1. Bellflower
2. Lakewood
3. Paramount
4. Signal Hill

District # 25
Gateway Cities COG

1. Downey
2. South Gate

District # 26
Gateway Cities COG

1. Compton
2. Lynwood

District # 27
Gateway Cities COG

1. Bell
2. Bell Gardens
3. Commerce
4. Cudahy
5. Huntington Park
6. Maywood
7. Vernon

District # 28
South Bay Cities COG

1. Gardena
2. Hawthorne
3. Inglewood

District # 29
Gateway Cities COG

1. Long Beach
2. Avalon

District # 30
Gateway Cities COG

1. Long Beach

District # 31
Gateway Cities

1. La Habra Heights
2. La Mirada
3. Santa Fe Springs
4. Pico Rivera
5. Whittier

District # 32
SGVCOG

1. El Monte
2. Rosemead
3. South El Monte

District # 33
SGVCOG

1. Azusa
2. Baldwin Park
3. Covina
4. Glendora
5. Irwindale

District # 34
SGVCOG

1. Alhambra
2. Montebello
3. Monterey Park

District # 35
SGVCOG

1. Arcadia
2. Bradbury
3. Duarte
4. Monrovia
5. San Gabriel
6. San Marino
7. Sierra Madre
8. Temple City

District # 36
SGVCOG

1. La Cañada Flintridge
2. Pasadena
3. South Pasadena

District # 37
SGVCOG

1. Diamond Bar
2. Industry
3. La Puente
4. Walnut
5. West Covina

District # 38
SGVCOG

1. Claremont
2. La Verne
3. Pomona
4. San Dimas

District # 39
South Bay Cities COG

1. Carson
2. Lomita
3. Torrance

District # 40
South Bay Cities COG

1. El Segundo
2. Hermosa Beach
3. Lawndale
4. Manhattan Beach
5. Palos Verdes Estates
6. Rancho Palos Verdes
7. Redondo Beach
8. Rolling Hills
9. Rolling Hills Estates

District # 41
Westside Cities COG

1. Beverly Hills
2. Culver City
3. Santa Monica
4. West Hollywood

District # 42

Arroyo Verdugo

1. Burbank
2. Glendale

District # 43

North LA County

1. Lancaster
2. Palmdale

District # 44

Las Virgenes Malibu

1. Agoura Hills
2. Calabasas
3. Hidden Hills
4. Malibu
5. Westlake Village

District # 45

VCOG

1. Camarillo
2. Oxnard
3. Port Hueneme

District # 46

VCOG

1. Moorpark
2. Simi Valley
3. Thousand Oaks

District # 47

VCOG

1. Fillmore
2. Ojai
3. San Buenaventura
4. Santa Paula

District # 48

(City of Los Angeles)

LA District # 1

District # 49

(City of Los Angeles)

LA District # 2

District # 50

(City of Los Angeles)

LA District # 3

District # 51

(City of Los Angeles)

LA District # 4

District # 52

(City of Los Angeles)

LA District # 5

District # 53

(City of Los Angeles)

LA District # 6

District # 54

(City of Los Angeles)

LA District # 7

District # 55

(City of Los Angeles)

LA District # 8

District # 56

(City of Los Angeles)

LA District # 9

District # 57

(City of Los Angeles)

LA District # 10

District # 58

(City of Los Angeles)

LA District # 11

District # 59

(City of Los Angeles)

LA District # 12

District # 60

(City of Los Angeles)

LA District # 13

District # 61

(City of Los Angeles)

LA District # 14

District # 62

(City of Los Angeles)

LA District # 15

District # 63

WRCOG

1. Canyon Lake
2. Corona
3. Lake Elsinore
4. Menifee
5. Wildomar

District # 64

OCCOG

1. Huntington Beach

District # 65

SANBAG

1. Adelanto
2. Apple Valley
3. Hesperia
4. Victorville

District # 66

CVAG

1. Blythe
2. Coachella
3. Indio
4. La Quinta

District # 67

North LA County

1. San Fernando
2. Santa Clarita

COUNTIES

- Imperial County
- Los Angeles County
- Orange County
- Riverside County
- San Bernardino County
- Ventura County

CITIES

Imperial County

- Brawley
- Calexico
- Calipatria
- El Centro
- Holtville
- Imperial
- Westmorland

Los Angeles County

- Agoura Hills
- Alhambra
- Arcadia
- Artesia
- Avalon
- Azusa
- Baldwin Park
- Bell
- Bell Gardens
- Bellflower
- Beverly Hills
- Bradbury
- Burbank
- Calabasas
- Carson
- Cerritos
- Claremont
- Commerce
- Compton

- Covina
- Cudahy
- Culver City
- Diamond Bar
- Downey
- Duarte
- El Monte
- El Segundo
- Gardena
- Glendale
- Glendora
- Hawaiian Gardens
- Hawthorne
- Hermosa Beach
- Hidden Hills
- Huntington Park
- Industry
- Inglewood
- Irwindale
- La Cañada Flintridge
- La Habra Heights
- La Mirada
- La Puente
- La Verne
- Lakewood
- Lancaster
- Lawndale
- Lomita
- Long Beach
- Los Angeles
- Lynwood
- Malibu
- Manhattan Beach
- Maywood
- Monrovia
- Montebello
- Monterey Park
- Norwalk
- Palmdale

- Paramount
 - Pasadena
 - Pico Rivera
 - Pomona
 - Rancho Palos Verdes
 - Redondo Beach
 - Rolling Hills Estates
 - Rosemead
 - San Dimas
 - San Fernando
 - San Gabriel
 - San Marino
 - Santa Clarita
 - Santa Fe Springs
 - Santa Monica
 - Sierra Madre
 - Signal Hill
 - South El Monte
 - South Gate
 - South Pasadena
 - Torrance
 - Vernon
 - Walnut
 - West Covina
 - West Hollywood
 - Westlake Village
 - Whittier
- Orange County**
- Anaheim
 - Brea
 - Buena Park
 - Cypress
 - Dana Point
 - Fullerton
 - Huntington Beach
 - Irvine
 - La Palma
 - Laguna Beach

Laguna Niguel
Laguna Woods
Lake Forest
Los Alamitos
Mission Viejo
Newport Beach
Placentia
San Clemente
Seal Beach
Tustin
Westminster
Yorba Linda

Riverside County

Banning
Beaumont
Blythe
Calimesa
Canyon Lake
Cathedral City
Coachella
Corona
Desert Hot Springs
Hemet
Indian Wells
Indio
La Quinta
Lake Elsinore
Menifee
Moreno Valley
Norco

Palm Desert
Palm Springs
Perris
Rancho Mirage
Riverside
San Jacinto
Temecula
Wildomar

San Bernardino County

Apple Valley
Barstow
Big Bear Lake
Chino
Chino Hills
Colton
Fontana
Grand Terrace
Highland
Loma Linda
Montclair
Needles
Ontario
Rancho Cucamonga
Redlands
Rialto
San Bernardino
Upland
Victorville
Yucaipa
Yucca Valley

Ventura County

Camarillo
Fillmore
Moorpark
Ojai
Oxnard
Port Hueneme
San Buenaventura
Santa Paula
Simi Valley
Thousand Oaks

Tribal Government Representative

Morongo-Mission Indians
Pechanga Band of Luiseño Indians

County Transportation Commissions

Imperial Valley Association of Governments
Orange County Transportation Authority
Riverside County Transportation Commission
San Bernardino Associated Governments
Ventura County Transportation Commission

Funding: The preparation of this report was financed in part through grants from the United States Department of Transportation – Federal Highway Administration and the Federal Transit Administration – under provisions of the “Safe, Accountable, Flexible, Efficient Transportation Equity Act: A Legacy for Users” (SAFETEA-LU). Additional financial assistance was provided by the California State Department of Transportation.

OFFICERS

President: Jon A. Edney, El Centro

First Vice President: Larry McCallon, Highland

Second Vice President: Pam O’Connor, Santa Monica

Immediate Past President: Richard Dixon, Lake Forest

MEMBERS

Imperial County: Jon A. Edney, El Centro

Los Angeles County: Mike Antonovich, Los Angeles County • Mark Ridley-Thomas, Los Angeles County • Richard Alarcón, Los Angeles • Barbara Calhoun, Compton • Tony Cardenas, Los Angeles • Stan Carroll, La Habra Heights • Margaret Clark, Rosemead • Gene Daniels, Paramount • Judy Dunlap, Inglewood • Margaret Finlay, Duarte • David Gafin, Downey • Eric Garcetti, Los Angeles • Frank Gurulé, Cudahy • Janice Hahn, Los Angeles • Keith W. Hanks, Azusa • Carol Herrera, Diamond Bar • Steve Hofbauer, Palmdale • José Huizar, Los Angeles • Paul Koretz, Los Angeles • Tom LaBonge, Los Angeles • Paula Lantz, Pomona • Val Lerch, Long Beach • Marsha McLean, Santa Clarita • Barbara Messina, Alhambra • Judy Mitchell, Rolling Hills Estates • Larry Nelson, Artesia • Pam O’Connor, Santa Monica • Bernard Parks, Los Angeles • Jan Perry, Los Angeles • Frank Quintero, Glendale • Ed Reyes, Los Angeles • Susan Rhilinger, Torrance • Bill Rosendahl, Los Angeles • Greig Smith, Los Angeles • Mike Ten, South Pasadena • Tonia Reyes-Uranga, Long Beach • Antonio Villaraigosa, Los Angeles • Dennis Washburn, Calabasas • Herb J. Wesson, Jr., Los Angeles • Dennis Zine, Los Angeles

Orange County: Chris Norby, Orange County • John Beauman, Brea • Gil Coerper, Huntington Beach • Leslie Daigle, Newport Beach • Richard Dixon, Lake Forest • Paul Glaab, Laguna Niguel • Robert Hernandez, Anaheim • Beth Krom, Irvine • Leroy Mills, Cypress • John Nielsen, Tustin • Andy Quach, Westminster • Sharon Quirk-Silva, Fullerton

Riverside County: Jeff Stone, Riverside County • Thomas Buckley, Lake Elsinore • Melanie Fesmire, Indio • Bonnie Flickinger, Moreno Valley • Ron Loveridge, Riverside • Greg Pettis, Cathedral City • Ron Roberts, Temecula

San Bernardino County: Gary Ovitt, San Bernardino County • Ginger Coleman, Apple Valley • Glenn Duncan, Chino • Paul Eaton, Montclair • Pat Gilbreath, Redlands • Bill Jahn, Big Bear Lake • Larry McCallon, Highland • Deborah Robertson, Rialto

Ventura County: Linda Parks, Ventura County • Glen Becerra, Simi Valley • Bryan MacDonald, Oxnard • Carl Morehouse, San Buenaventura

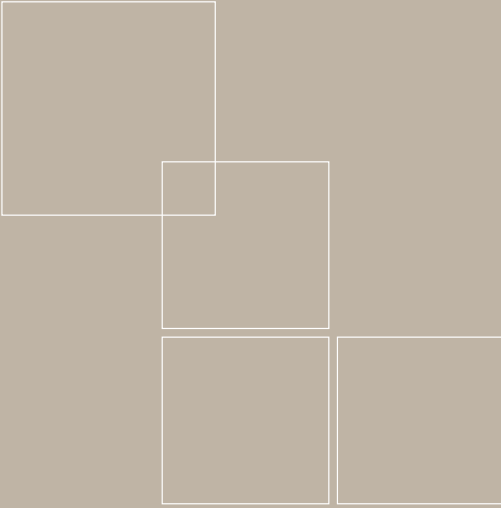
Tribal Government Representative: Mark Calac, Pechanga Band of Luiseño Indians

Orange County Transportation Authority: Art Brown, Buena Park

Riverside County Transportation Commission: Robin Lowe, Hemet

San Bernardino Associated Governments: Kelly Chastain, Colton

Ventura County Transportation Commission: Keith Millhouse, Moorpark



**SOUTHERN CALIFORNIA
ASSOCIATION of GOVERNMENTS**

818 West Seventh Street
12th Floor
Los Angeles, CA 90017
tel (213) 236-1800
fax (213) 236-1961
www.scag.ca.gov

