



Active Transportation Working Group

December 20, 2018

1:00 pm to 2:30 pm

SCAG's Main Office*

900 Wilshire Blvd., Ste. 1700, Los Angeles, CA 90017

*Video conferencing is available at SCAG's regional offices. Space is limited at the Orange County office. If you plan on attending at the Orange County Regional Office please RSVP to Rye Baerg (baerg@scag.ca.gov). Orange County participants must also check in with the OCTA office's receptionist so should arrive early.

AGENDA

- 1. Active Transportation Program Cycle 4 Update**
Rye Baerg, SCAG
- 2. 2018 Sustainability Communities Planning Grants Update**
Hannah Brunelle, SCAG
- 3. Active Transportation and Technology**
 - Scooters and Dockless Bike Share – Francie Stefan, City of Santa Monica
 - Bike Share in LA County – Carolyn Mamaradlo, Metro
 - Update on Freight Delivery Technologies – Scott Strolecki, SCAG
- 4. Go Human Update**
Lindsey Hansen, SCAG
- 5. Connect SoCal Update and ATWG Outlook**
Rye Baerg, SCAG

TO PARTICIPATE VIA WEB CONFERENCING:

To join PC, Mac, Linux, iOS or Android: <https://scag.zoom.us/j/828712917>

Conference Number: 1 669 900 6833

Meeting ID: 828 712 917

SCAG, in accordance with the Americans with Disabilities Act, is committed to providing special accommodations to those who are interested in participating in the workshop. SCAG is also committed to helping those with limited proficiency in the English language by providing translation services at the workshop in accordance with Title VI of the Civil Rights Act. We ask that you provide your request for special accommodations or translation services at least 72 hours prior to the meeting so that SCAG has sufficient time to make arrangements. Please contact Rye Baerg, Program Manager at baerg@scag.ca.gov or by calling (213) 236-1866.

2019 ATP Cycle 4 Update

Rye Baerg

Senior Regional Planner

December 20, 2018



Applications Received



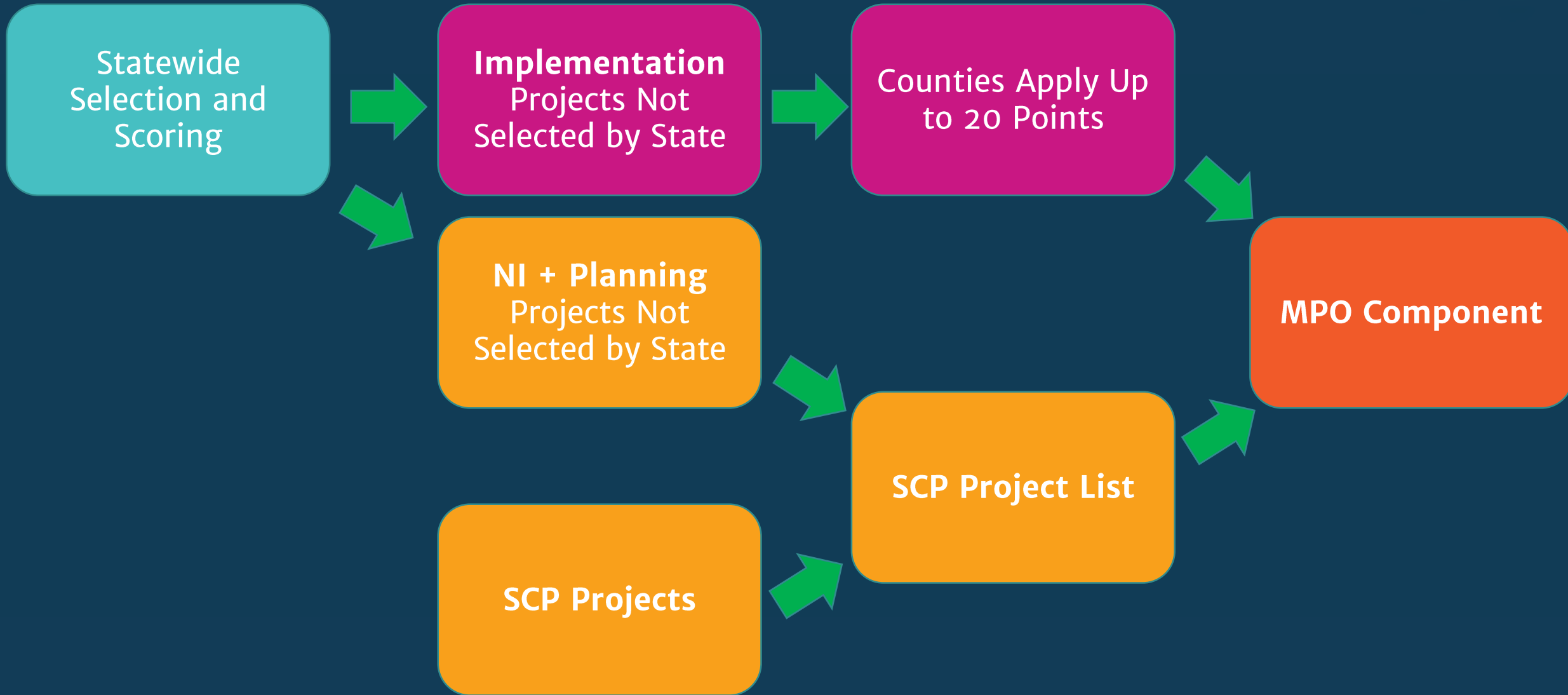
Summary of Applications Received			
	Statewide	SCAG Region	SCAG Percentage
Total Applications Received	551	199	36%
Total Project Cost	\$3,095,826,000	\$1,217,217,000	39%
Total ATP Request	\$2,227,084,000	\$1,008,627,000	45%
Infrastructure Apps	444	157	35%
Total Project Cost	\$2,779,296,000	\$1,097,169,000	39%
Total ATP Request	\$1,957,370,000	\$896,026,000	46%
Infrastructure + NI	54	20	37%
Total Project Cost	\$267,597,000	\$99,719,000	37%
Total ATP Request	\$223,366,000	\$92,783,000	42%
Non-Infrastructure	29	12	41%
Total Project Cost	\$37,214,000	\$12,350,000	33%
Total ATP Request	\$35,215,000	\$12,151,000	35%
Plans	24	10	42%
Total Project Cost	\$11,719,000	\$7,979,000	68%
Total ATP Request	\$11,133,000	\$7,667,000	69%

Timeline



SCAG SCP Application Deadline	December 14, 2018
Statewide staff recommendation for statewide and small urban and rural portions of the program	December 31, 2018
Commission adopts statewide and small urban and rural portions of the program	January 2019
SCAG Draft Regional Program	February 15, 2018
Deadline for MPO DRAFT project programming recommendations to the Commission	February 15, 2019
RC approves SCP Projects	March 7, 2019
TC recommends approval for Regional Program	April 4, 2019
RC Adopts SCAG Regional Program Approval	April 4, 2019
Deadline for MPO FINAL project programming recommendations to the Commission	April 30, 2019
Commission adopts MPO selected projects	June 2019

Statewide and MPO Selection Process



- Next Quarterly Progress Reports are due January 11th.
 - Cover October – December 2018.
 - Regional-atp@scag.ca.gov
 - http://www.dot.ca.gov/hq/LocalPrograms/atp/proj_report.html





Tribal Transportation Safety and Planning Program

RFP for Proposal for the Active Transportation Assessment with California Native American Tribes



Project Background

The Cher-Ae Heights Indian Community, in partnership with the National Indian Justice Center, is announcing a Request for Proposals (RFP) for the Active Transportation Assessments with California Native American Tribes Project.

The project requires Active Transportation Consultants to conduct Active Transportation Assessments with 12 federally-recognized Tribes located in California and produce active transportation reports for each of the 12 Tribes using data and information from the assessments. A report summarizing the findings for the project will also be produced.

The Active Transportation Assessments will document the current and projected

[Click here for the Trinidad Transportation Project RFP](#)

Information About Submitting Proposals

NIJC has posted the bid package, which includes the bid requirements, scoring criteria, and more information on the project, on the NIJC website: www.nijc.org

The deadline for submitting proposals is Friday, December 28, 2018 by 5 p.m. PST

For pre-bid information, please contact Ben Myers, Staff Attorney, at benmyers@nijc.org

Thank you

Rye Baerg

baerg@scag.ca.gov

213-236-1866



Sustainable Communities Program Update

Hannah Brunelle

Assistant Regional Planner

Brunelle@scag.ca.gov



Sustainable Communities Program Goals



- Provide needed planning resources to local jurisdictions for sustainability planning efforts
- Develop local plans that support the implementation of the 2016 Regional Transportation Plan/Sustainable Communities Strategy
- Increase the region's competitiveness for federal and state funds, including but not limited to the California Active Transportation Program and Greenhouse Gas Reduction Funds



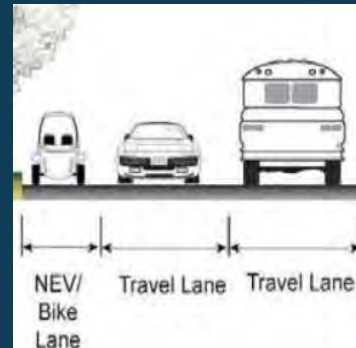
Calexico Gateway



Sustainable South Bay



Laguna Niguel



WRCOG NEV Plan



Downtown Fontana



Ventura FWY Cap

- 3 categories:
 - Active Transportation
 - Integrated Land Use (ILU)
 - Green Region Initiative (GRI)
- Successful applicants receive technical assistance
 - Active Transportation – SCAG completes procurement for submitted scope of work
 - ILU & GRI projects – Specific deliverables completed

- **Active Transportation**
 - Increase biking & walking;
 - Increase safety and mobility of non-motorized users;
 - Promote implementation of the 2016 RTP/SCS;
 - Produce plans that provide for future ATP applicants;
 - Increase the overall budget for active transportation planning & capacity building projects

2018 SCP Call for Projects Summary



SCP Project Categories	
Active Transportation	36
• Community-wide/Area Plans	18
• Quick Build	12
• Regional Corridors	4
• Safety Strategic Plan	2
Sustainability	25
• EV Charging Infrastructure Planning	13
• Livable Corridor/TOD Planning	3
• Parking Pricing, Reduction, & Management	1
• Parking Strategies	1
• SB 743 Implementation Assistance	4
• Urban Greening/Heat Island	3
Grand Total	61

2018 SCP Call for Projects Summary



Active Transportation Applications by County	
Imperial	2
Los Angeles	18
Orange	3
Riverside	8
San Bernardino	3
Ventura	2
Grand Total	36

SCP Projects Timeline



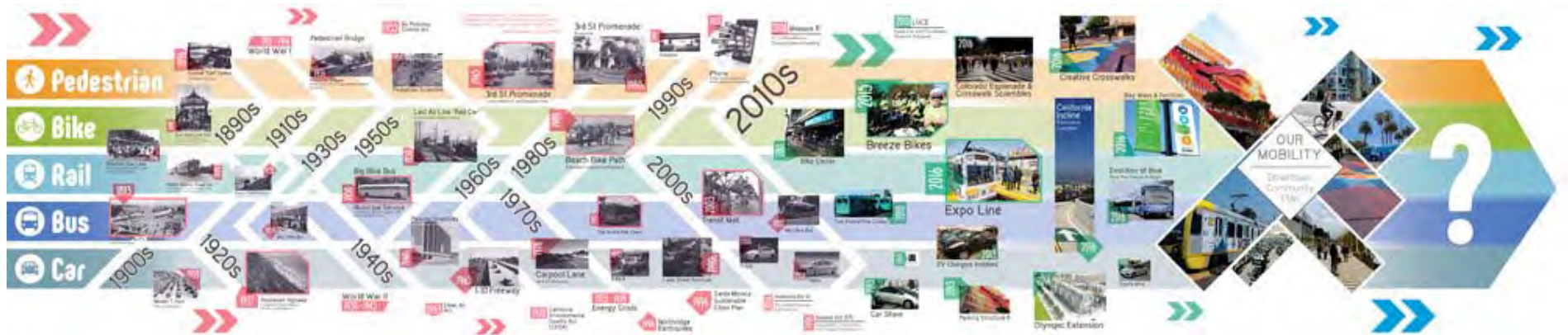
Active Transportation Projects	
Application Scoring Finalized	January 4, 2019
SCAG SCP Recommended Project List	January 11, 2019
SCAG Draft Programming Recommendations to the California Transportation Commission	February 15, 2019
Regional Council Approval of 2018 SCP Projects	March 7, 2019
California Transportation Commission Approval	June 2019
Funding Available	January 2020
Procurement Process	February – July 2020
Project Kick-off	July 2020
Project Completion	January 2023

Questions?

Hannah Brunelle
[Brunelle@scag.ca.gov](mailto: Brunelle@scag.ca.gov)
213-236-1907



Mobility Innovations Working Group December 20, 2018



Santa Monica's Adopted Goals:

Circulation Element: No Increase in PM Peak Vehicle Trips (2009 baseline)

Bike Action Plan: 14-35% Trips by Bike (2030)

Pedestrian Action Plan: 25% Trips by Walking (2030)

Vision Zero: Zero by 2026



Changing mobility demand, facilities, services



What we've seen? The Good and Bad.



Why a Shared Mobility Pilot Program?

- **Develop a new area of policy, regulation, and enforcement through firsthand experience**
- **Move quickly to adapt to a rapidly changing industry; leave room to learn and adjust**
- **Explore partnership models with private companies**
- **Explore possibilities for data capture, structures, and utilization**
- **Allow time to test management tools like shared mobility device drop zones**
- **Desired Outcomes:**
 - Diversify mobility options
 - Reduce emissions from short trips
 - Protect public safety, PROW access



Santa Monica's Pilot Program Structure

- Total duration: September 2018 to December 2019
- Selected:
 - Bird: 750 scooters
 - Jump: 250 scooters, 500 bikes
 - Lime: 750 scooters
 - Lyft: 250 scooters, 500 bikes
- Dynamic cap on number of devices
- Cost Recovery Fees (yearly): \$20k/Operator, \$130/Device
- Use of PROW Fee: \$1/device/day (billed monthly)



Operations

- Guided by published Administrative Rules – **Flexible and intended to be updated** throughout the program
 - 57 items – prioritized (musts/shoulds/phases)
- Daily communications with each vendor by **Program Administrator**
- Daily field documentation by **Code Enforcement Officer**
- Requires real-time data feed through an API for **managing dynamic caps**; also enables operations oversight



Mobility Data Specifications (MDS)

CityOfLosAngeles / mobility-data-specification

Unwatch 29 Star 39 Fork 17

Code Issues 17 Pull requests 4 Projects 0 Wiki Insights

Branch: master mobility-data-specification / provider /

Create new file Upload files Find file History

Commit	Author	Message	Time
464c912	adownsbird	Simple linting fixes	4 hours ago

README.md Simple linting fixes 4 hours ago

Mobility Data Specification: Provider

This specification contains a data standard for *mobility as a service* providers to define a RESTful API for municipalities to access on-demand.

<https://github.com/CityOfLosAngeles/mobility-data-specification>



Operator Performance/ Evaluation

Prioritize Safety and Evaluation Requirements

- Meet ISO and Federal safety standards and CVC Category Definitions for E-Bike and Motorized Scooter.
- Maximum 20mph (15mph scooter)
- Reduced speed to 5mph in prohibited areas
- Prohibited areas shown on all customer interfaces
- On-device notices: safety information, customer service number and vehicle ID
- Response time and enforcement actions for non-compliance
- Drop Zones, Proper parking incentives/disincentives

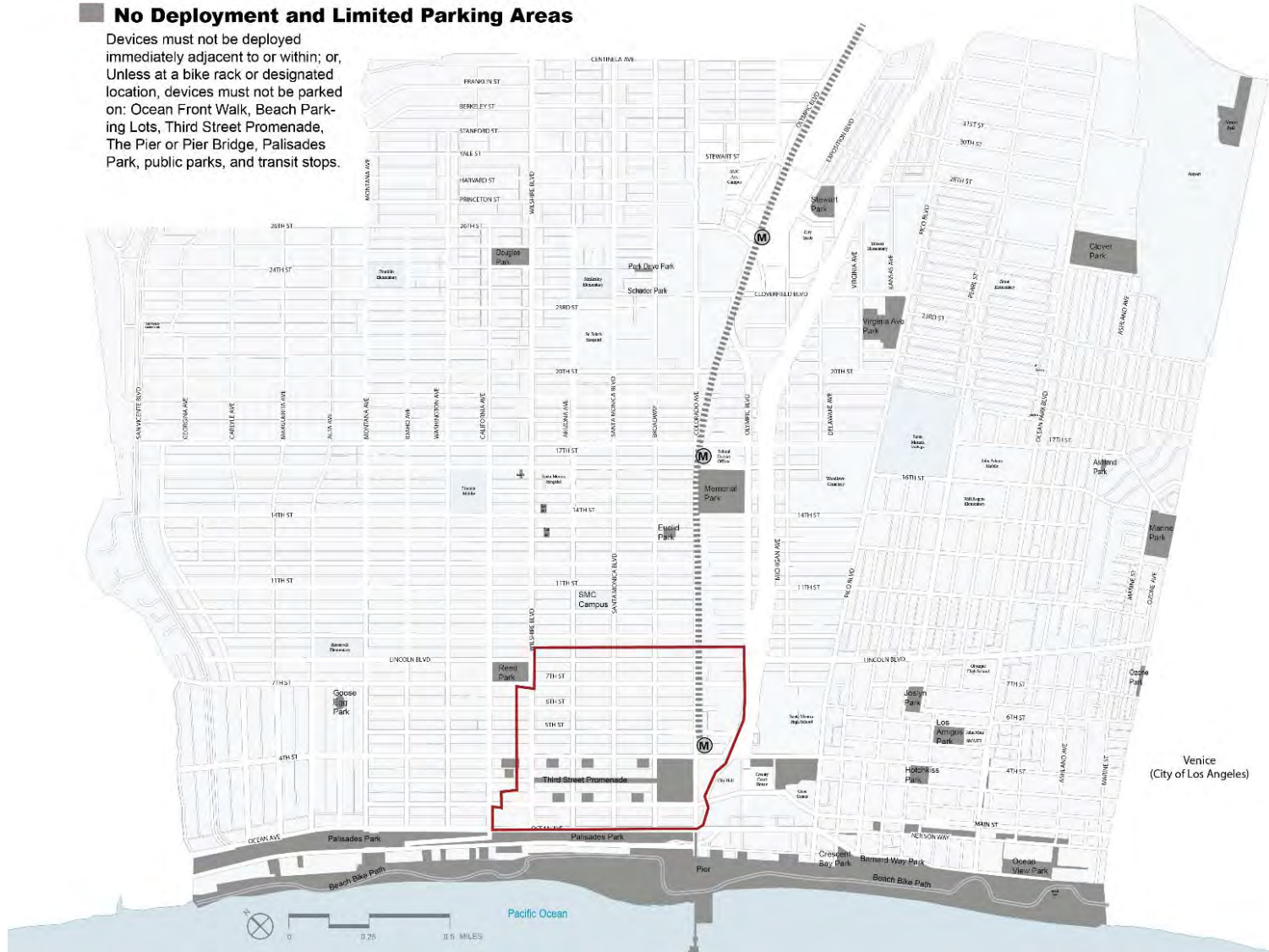


Parking and Deployment

 **Downtown Santa Monica Boundary**

 **No Deployment and Limited Parking Areas**

Devices must not be deployed immediately adjacent to or within; or, Unless at a bike rack or designated location, devices must not be parked on: Ocean Front Walk, Beach Parking Lots, Third Street Promenade, The Pier or Pier Bridge, Palisades Park, public parks, and transit stops.



Key Features – High Visibility Education

take the
friendly
road
for a safe santa monica.



**BE SAFE. AVOID A TICKET.
WEAR A HELMET.
PARK RESPECTFULLY.
HAVE A LICENSE.
ONE PERSON PER SCOOTER.
RIDE ON THE STREET.**

**THE e⚡SCOOTER
RULES TO KNOW
BEFORE YOU GO**

Key Features – High Visibility Education



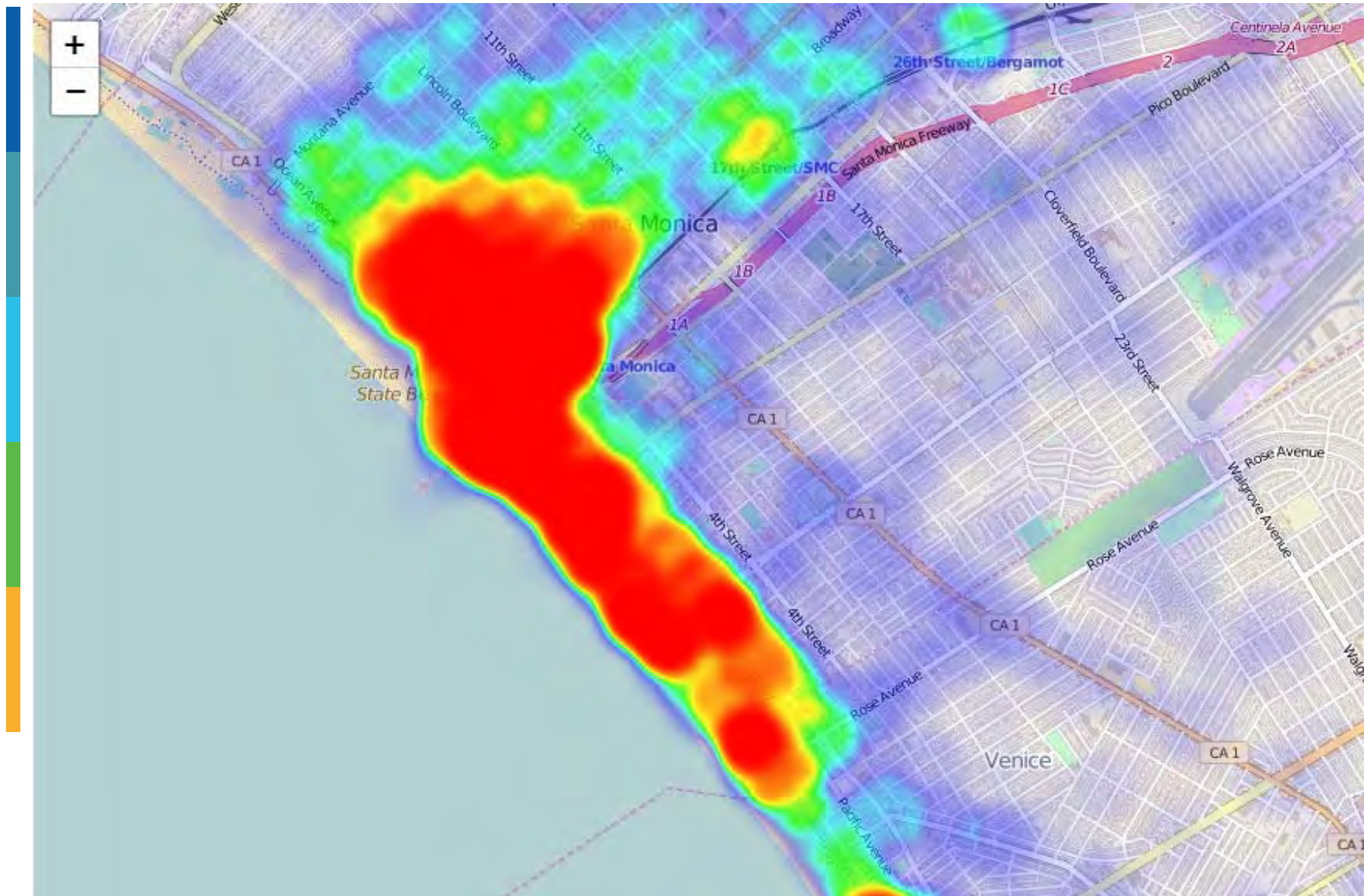
Drop Zones, Sidewalk & Beach Education



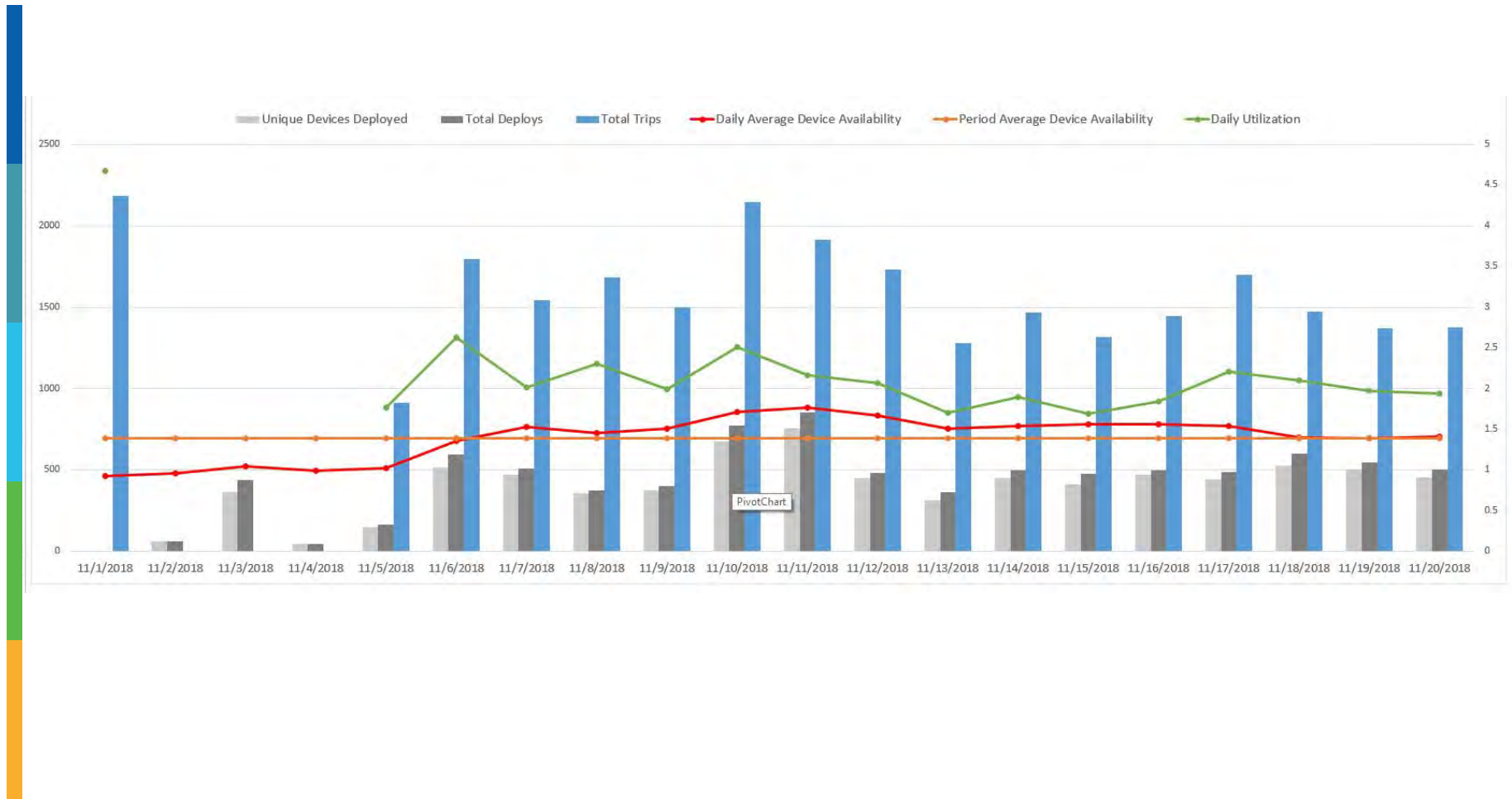
Ride Start Locations



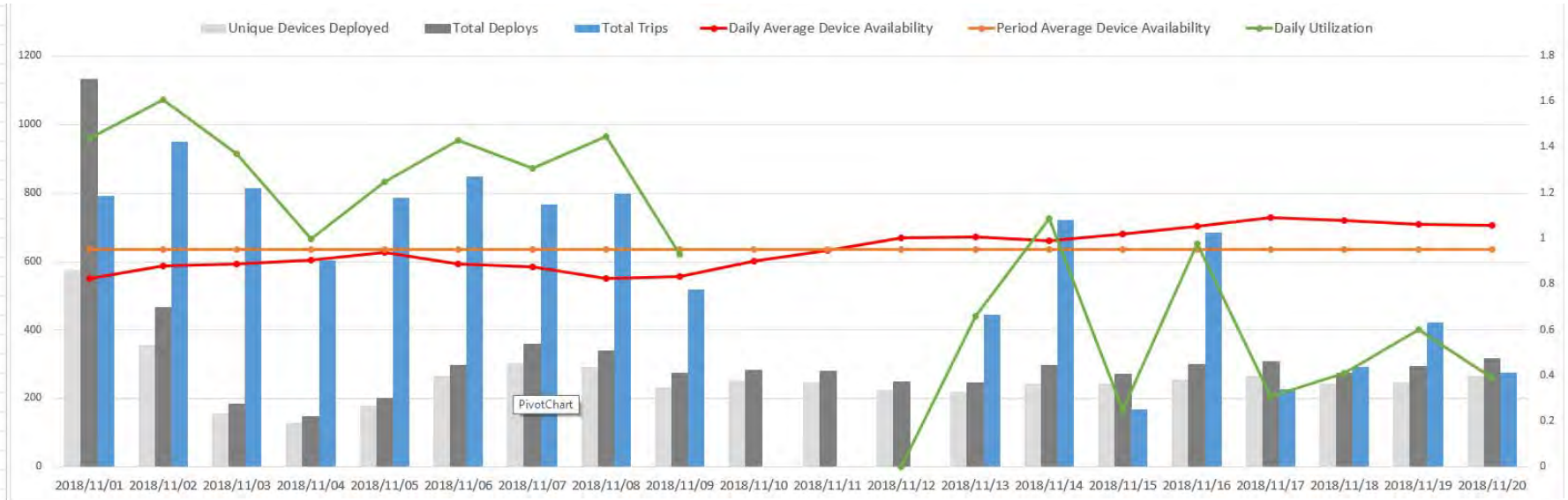
Ride End Locations



Deployments, Trips, Utilization Rates



Deployments, Trips, Utilization Rates



Compliance with Admin Regs.

- All operators have had varying success in meeting all the minimum requirements
- Some outstanding requirements are still not fully completed
- The City is keeping regular communication with the operators about compliance and non-compliance
- The City is beginning to escalate enforcement actions



Many Opportunities for Regional Alignment

Shared Tool Kit of Best Practices



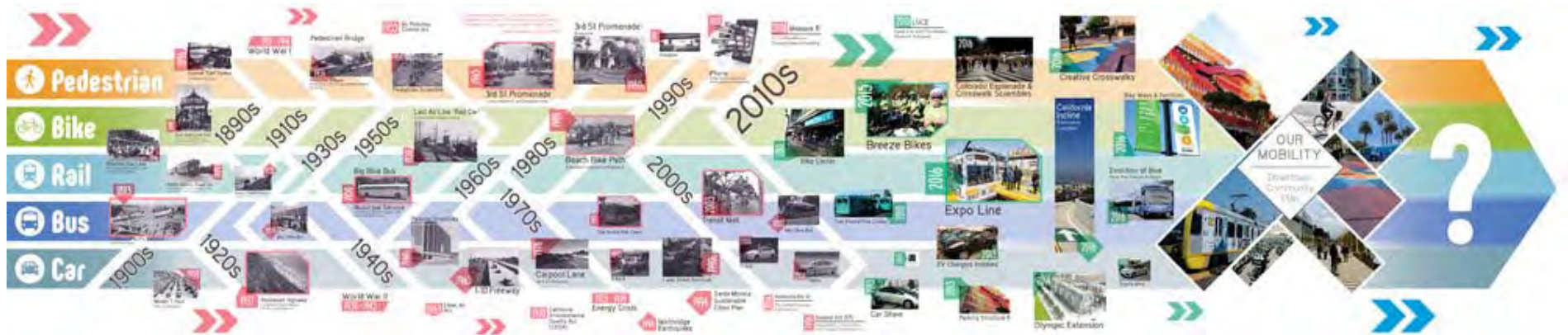
Questions?

Francie Stefan

Chief Mobility Officer, City of Santa Monica

francie.stefan@smgov.net

310-458-2201 x5378





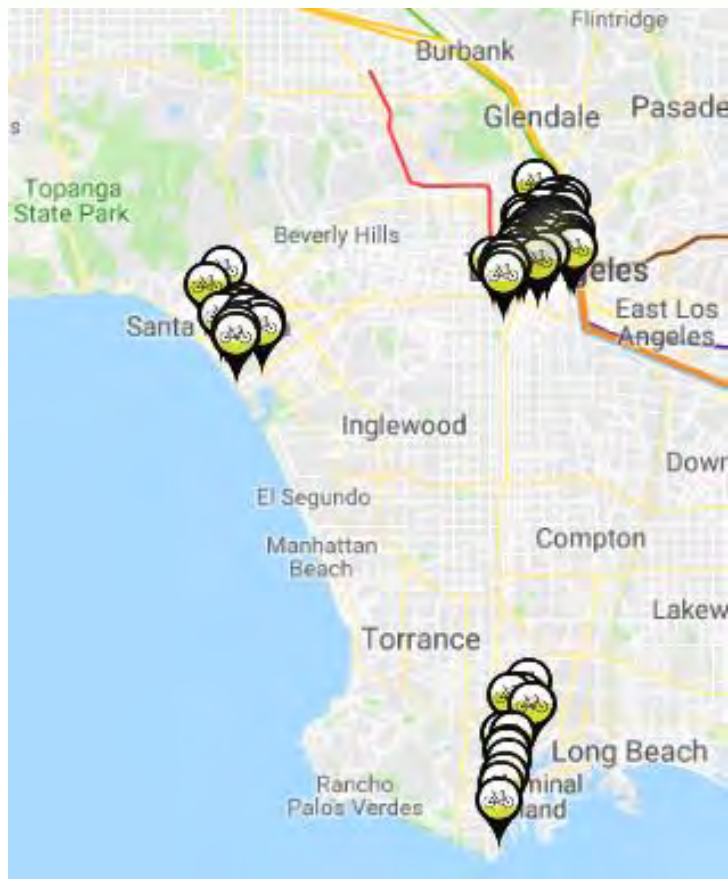
SCAG Active Transportation Working Group

Metro Bike Share

- Public shared use fleet of bikes
- First/last mile and short trips
- Partnership with cities
- Countywide program
- Environmental & Equity analysis



Currently Servicing DTLA, Venice & the Port of Los Angeles



**DTLA - launched July 7, 2016
68 Stations**
**Port of LA- launched July 31, 2017
13 Stations**
**Venice – launched September 7, 2017
15 Stations**



System Usage

Total Trips



552,645

Passes Sold



36,736

Calories Burned



41,573,415

Miles Traveled



1,731,858

Emissions Reduced
Pounds of CO₂



1,645,265

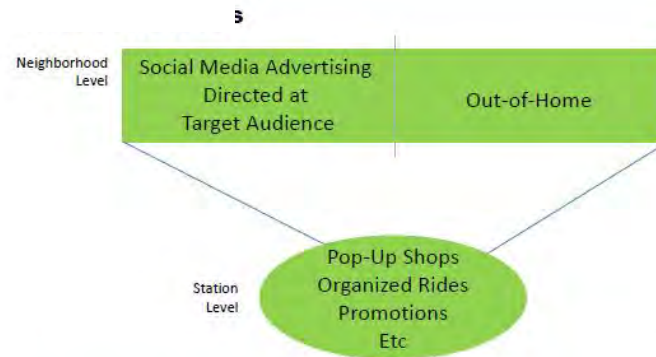
60% of users are making first/last mile connections to transit



New Business Plan



Media Strategy



Metro Rail/Bus Riders

Ads in Rail Stations w/ Bike Share Stations



Big wall ads. Signage & station audio announcements directing to Bike Share (watch out: our stations are often not optimized in residential areas to receive bikes on other end)

Pop Up Tents at Rail Stations



Similar to BTS's current event approach, but focused where we have product

Social Media Ads for Rail Riders



Serving ads on social media to Metro Rail riders



New Fare Structure

1-Ride

\$1.75/30 minutes

All trips 30 minutes or less are \$1.75

\$1.75 per 30 minutes thereafter

1-Day Pass

\$5/day

All trips 30 minutes or less are free

\$1.75 per 30 minutes thereafter

30-Day Pass

\$17/month

All trips 30 minutes or less are free

\$1.75 per 30 minutes thereafter

Annual Pass

\$150/year

All trips 30 minutes or less are free

\$1.75 per 30 minutes thereafter

More Options

- **Reduced Fare Pass**
\$5/month or \$50/year
- **Bike Share for Business**
40% off monthly pass
- **Bulk Passes**
Up to 50% off when you buy single ride passes in bulk

One fare to get you there

\$1.75

SINGLE RIDE

Same low price as Metro Bus and Rail

[Find A Station](#) [Sign Up](#)

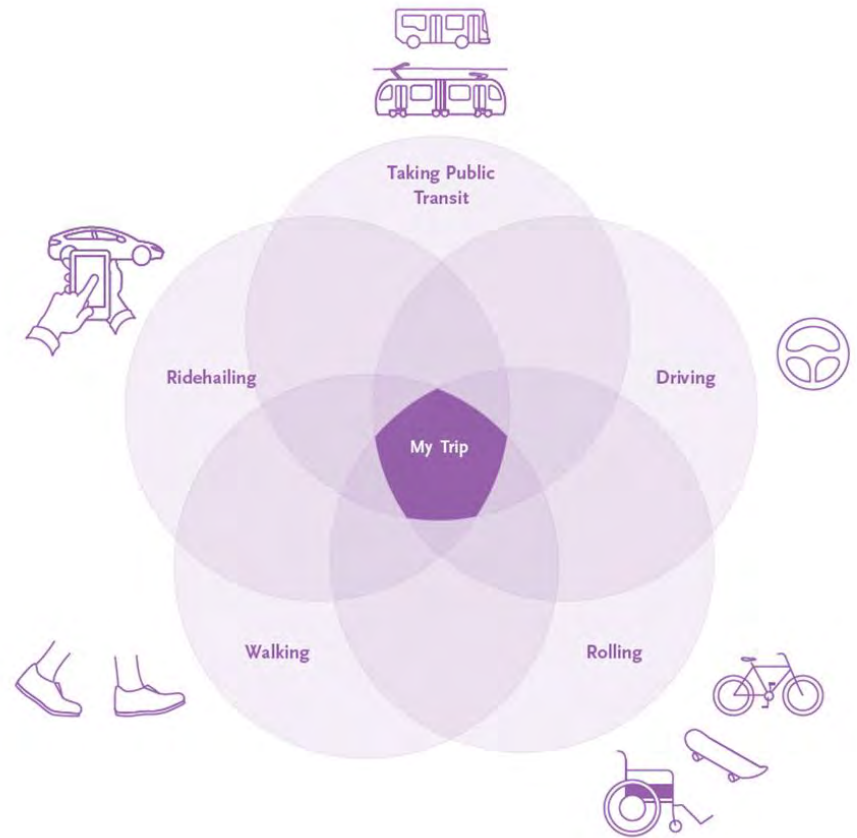
21% increase in ridership after new fares offered

TAP Integration

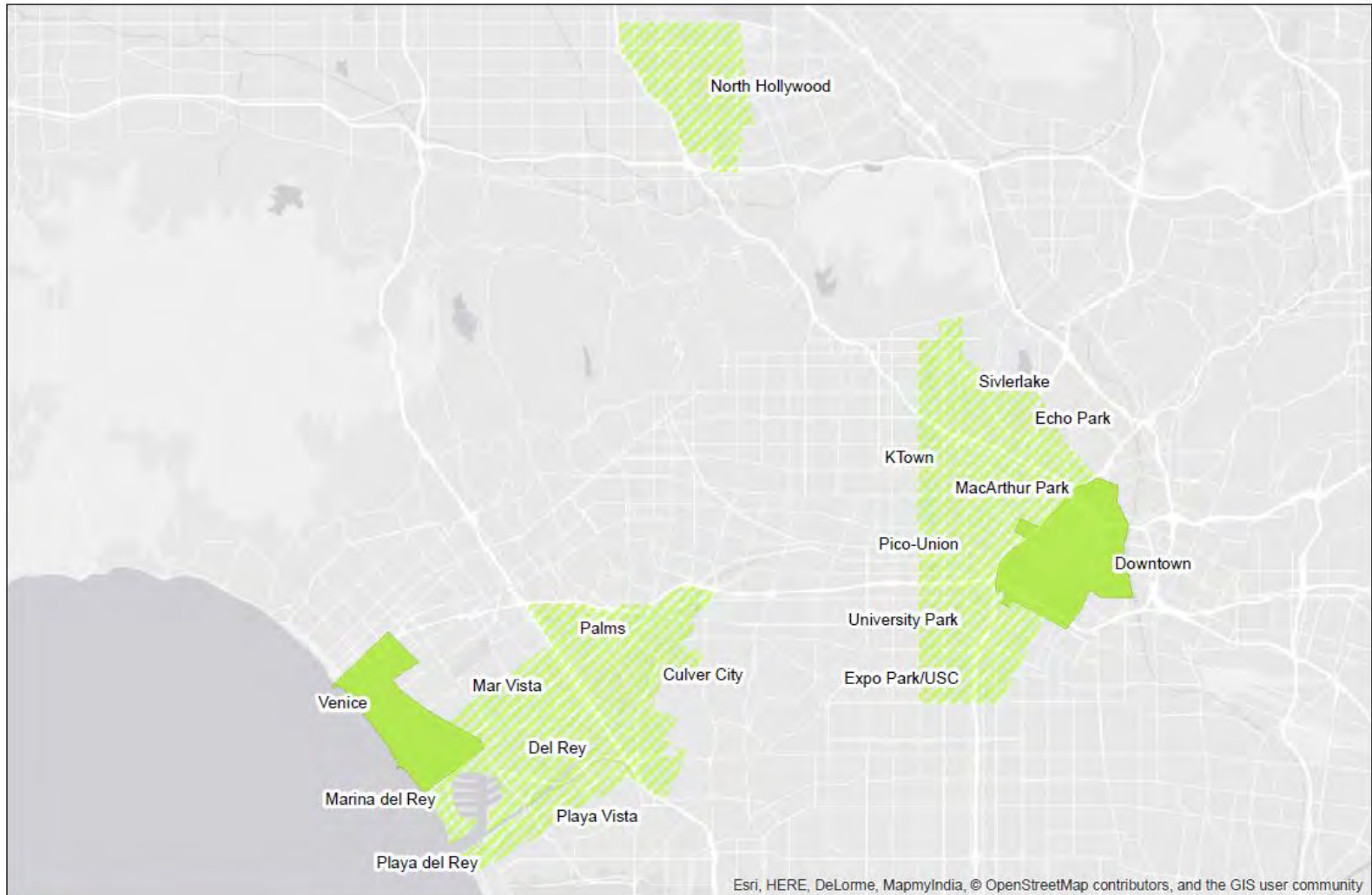


Makes possible:



- Single multimodal transport account
- Rewards across modes
- Cash payments
- Senior/ low-income/ student / disabled fares across modes

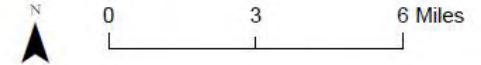


Phase 3 Expansion



Esri, HERE, DeLorme, MapmyIndia, © OpenStreetMap contributors, and the GIS user community

-  Phase 3 Expansion Communities
-  Existing System



Smart Dock



- Metro Bike Share existing system
- Technology in station
- Fixed locations, return to any station

Smart Bike

- BCycle “Dash” recently launched in Memphis, Tulsa, Colorado Springs & Jackson Hole
- Technology on bike
- Stations available, but can be returned to any bike rack
- Incentives to return to a station



Electric-Assist Bicycle Pilot



- Works with smart dock equipment
- 10 bikes
- Testing began Fall 2018



Next Steps

- TAP Integration
- Phase 3 Expansion
- Evaluate E-bike Pilot



Update on Freight Delivery Technologies

Active Transportation Working Group

Scott Strelecki

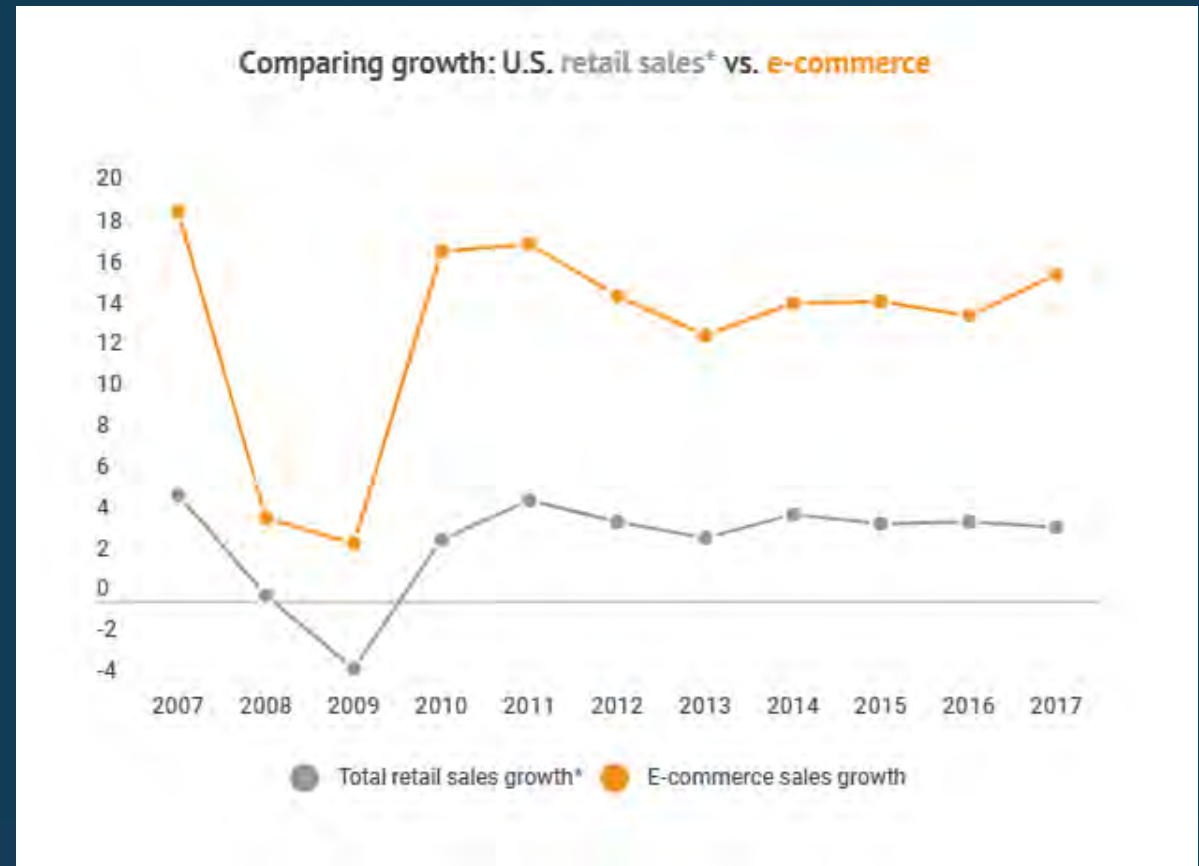
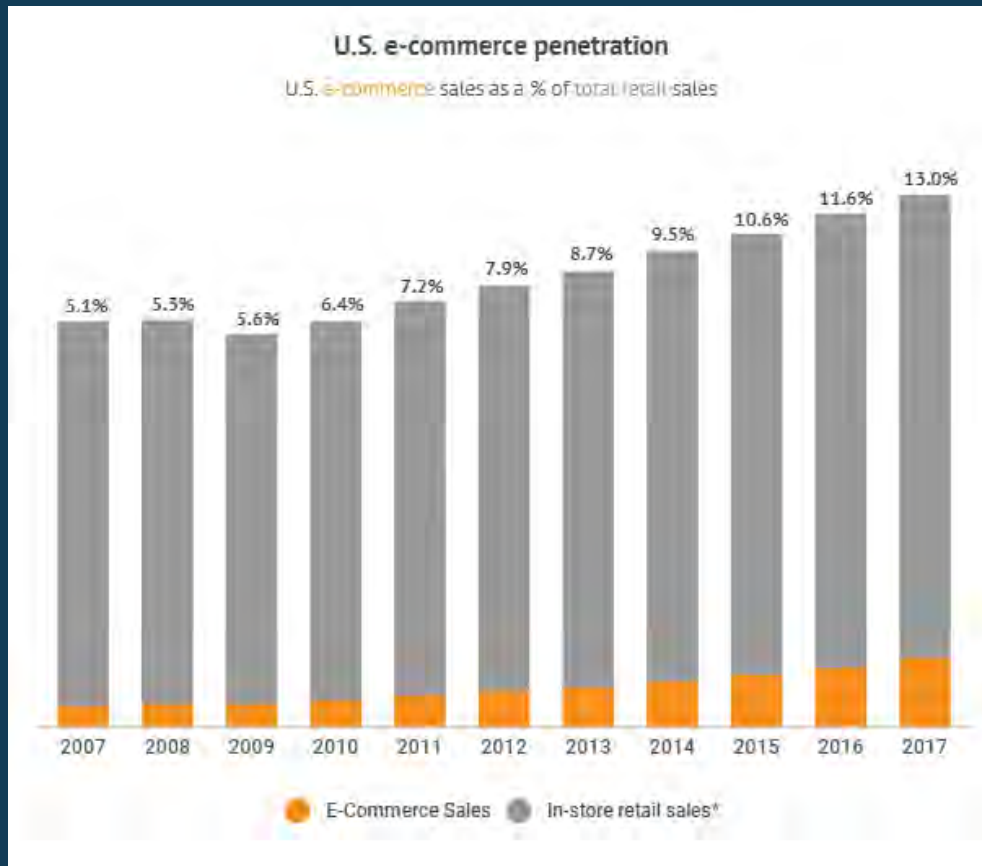
Senior Transportation Planner

December 20, 2018

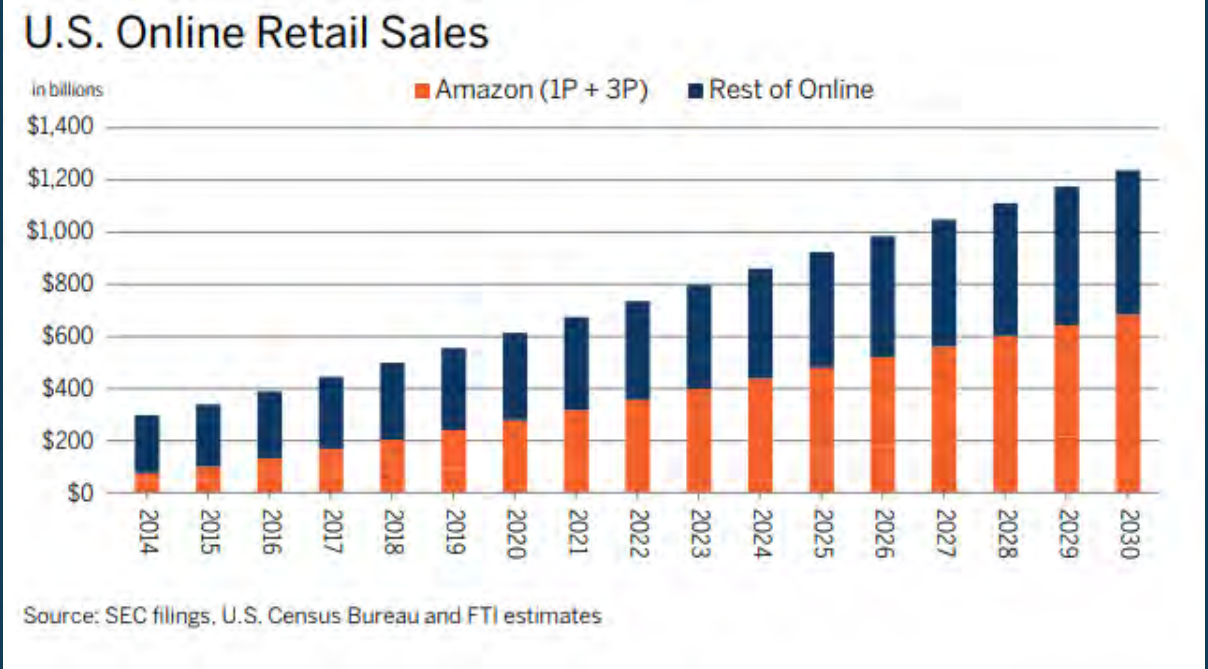
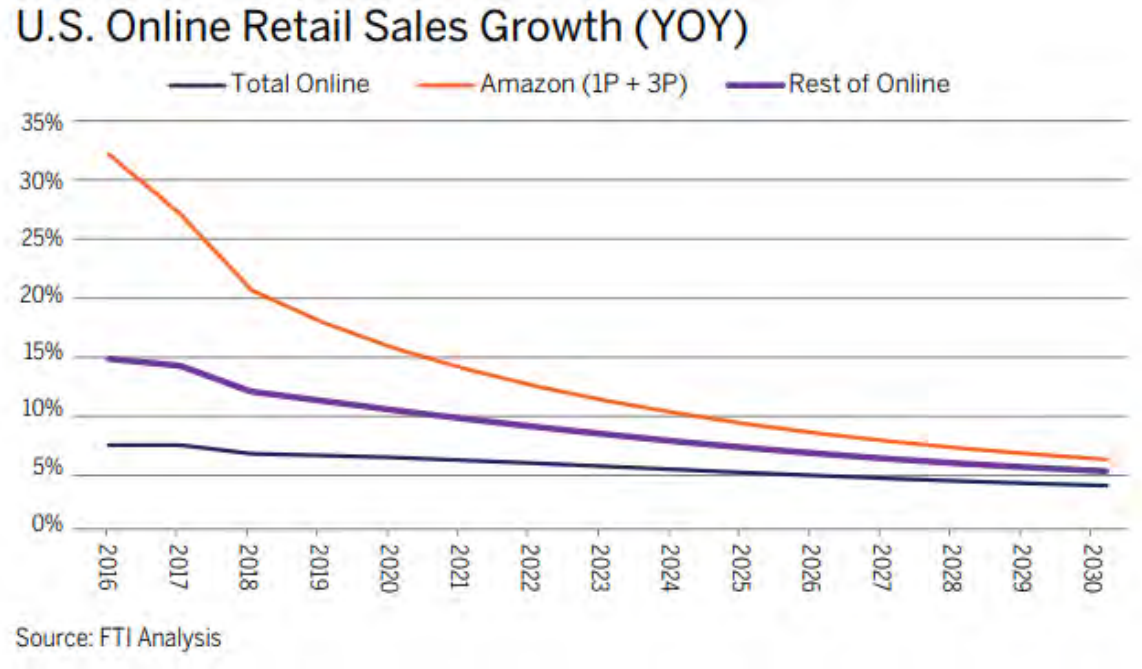


- Last Mile Delivery Context
- Emerging Technologies
 - Electrification/Alternative Fuels
 - Transportation Network Companies (TNCs)/Marketplace/
Crowdsourcing
 - Package Locker Delivery
 - Cargo Bikes
 - Robots
 - Autonomous Vehicles
 - Drones
- SCAG Focus On Last Mile Delivery & Curbside Management

- E-Commerce v. In-Store Retail Sales

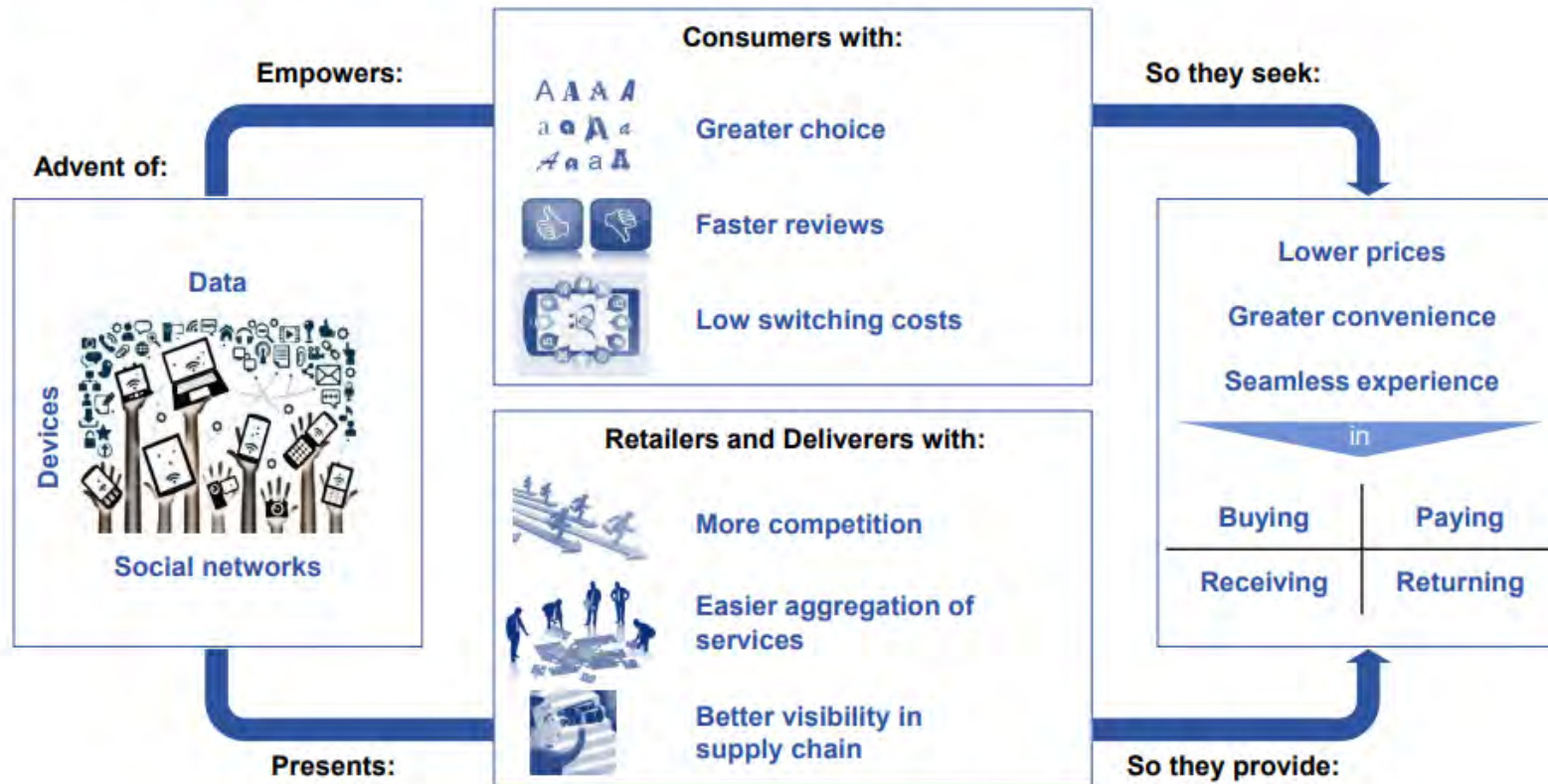


■ E-Commerce Performance



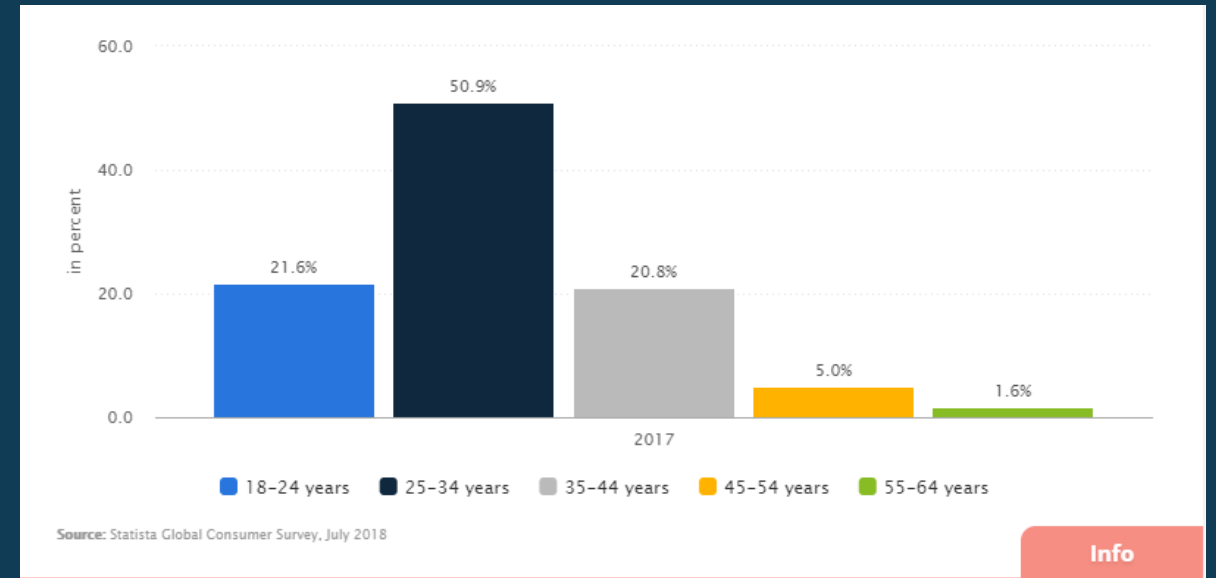
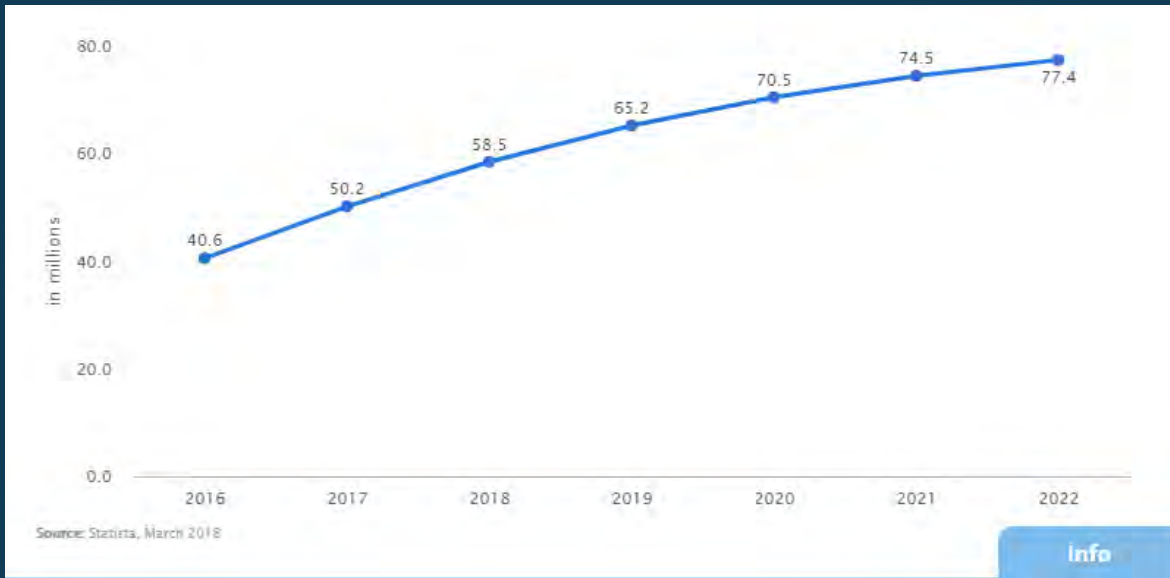
Digitally enabled consumers driving most of the eCommerce demand see bargaining power shifting toward them

Rise of the digital consumer



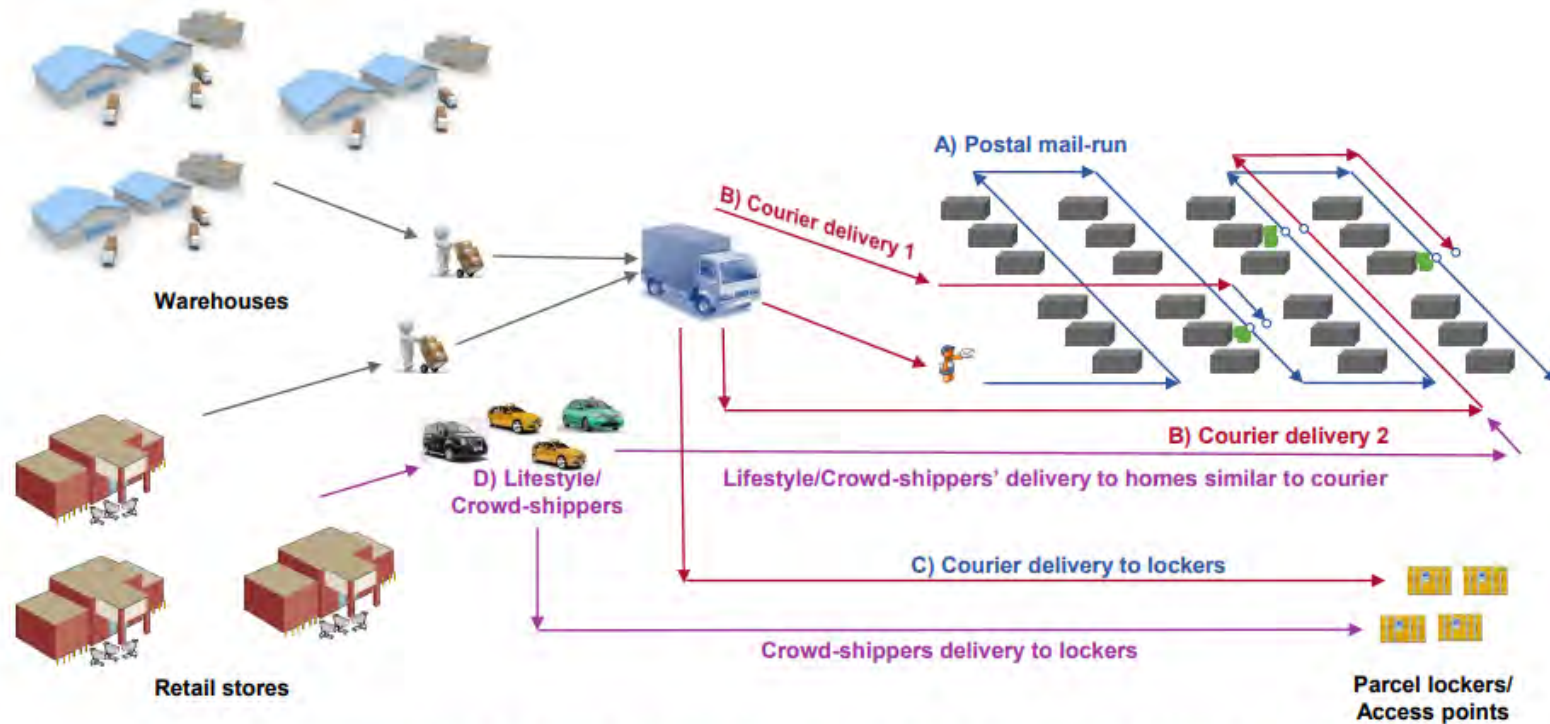
We have crossed barriers in choice, transparency, and service expectations

■ Ride Sharing Performance



The last mile, which holds key to the consumer experience, has witnessed an emergence of multiple delivery models

Last mile delivery models

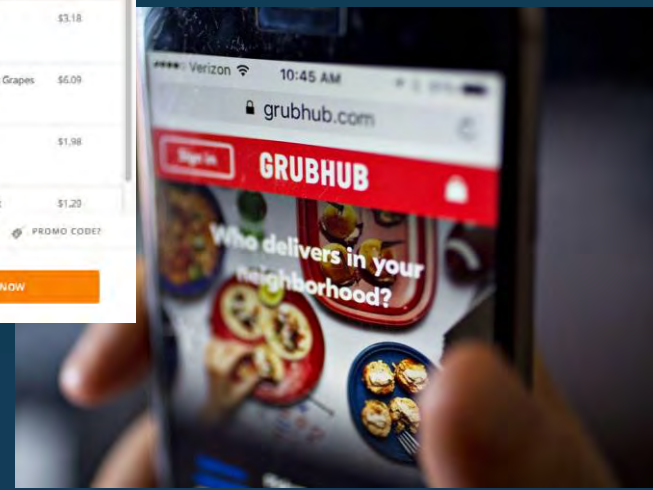
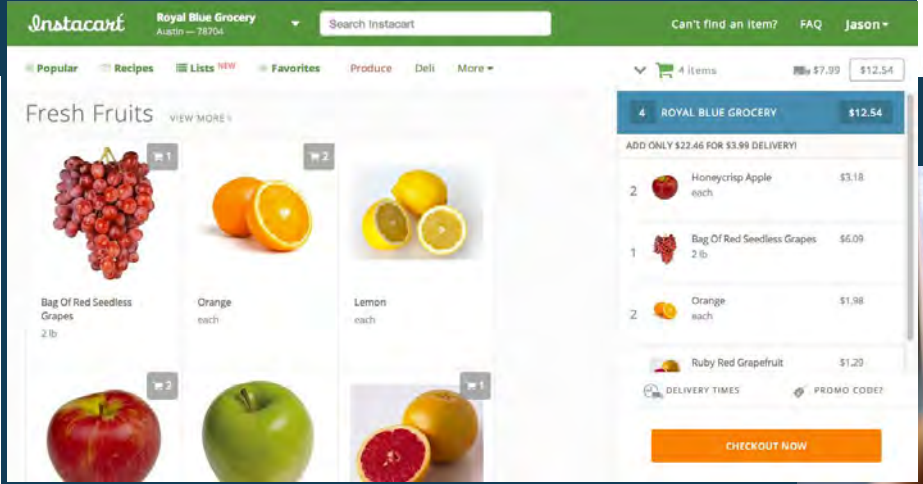
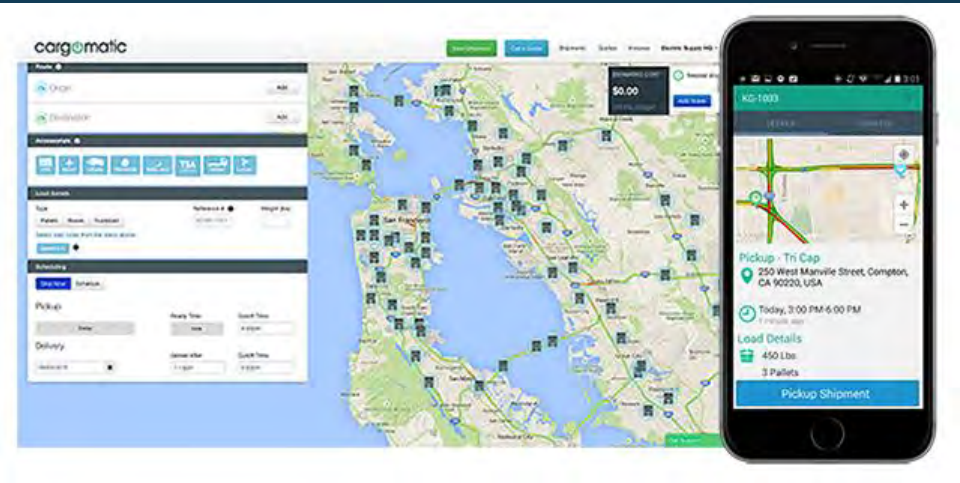
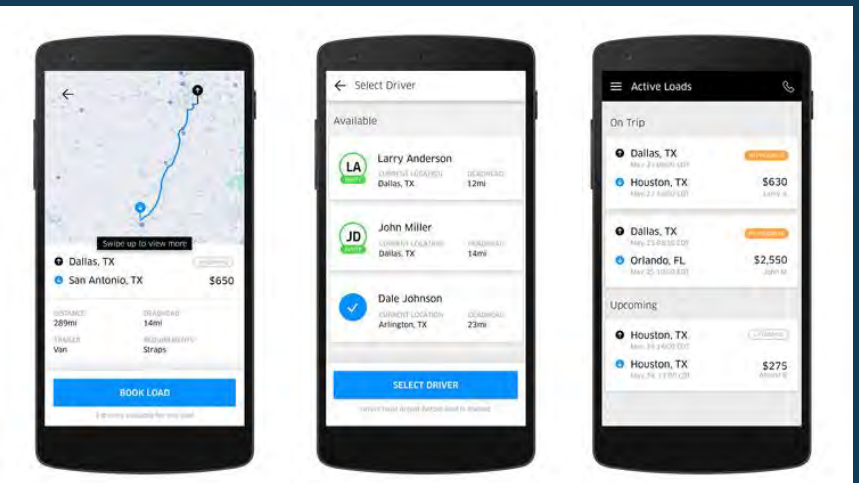


Consumer convenience and cost reduction have been primary objectives guiding the change

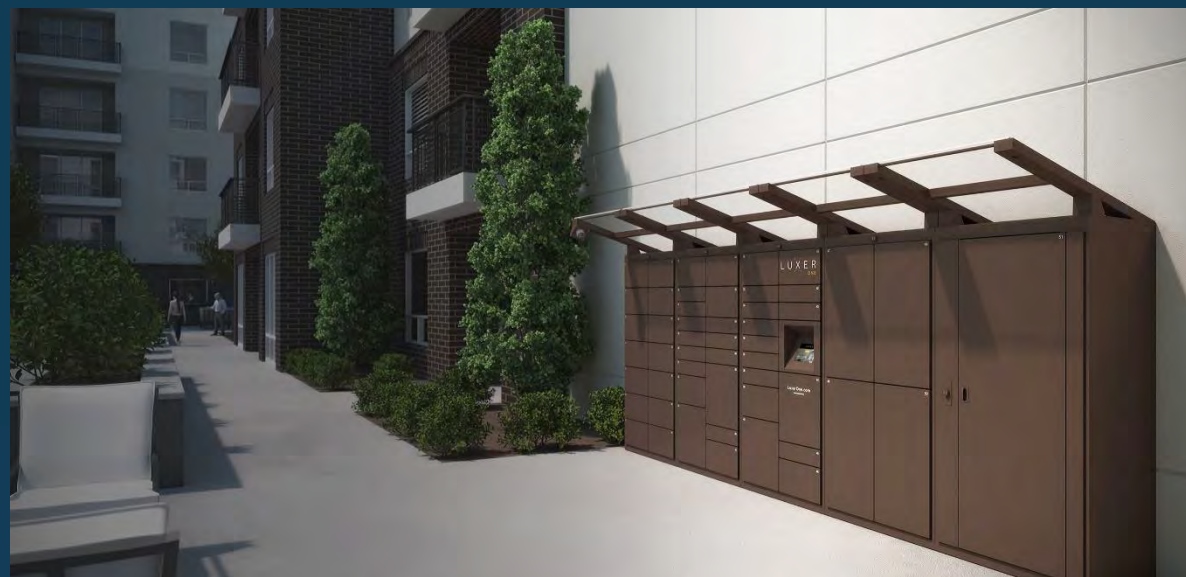
Electrification/Alternative Fuels



TNCs/Marketplace/Crowdsourcing



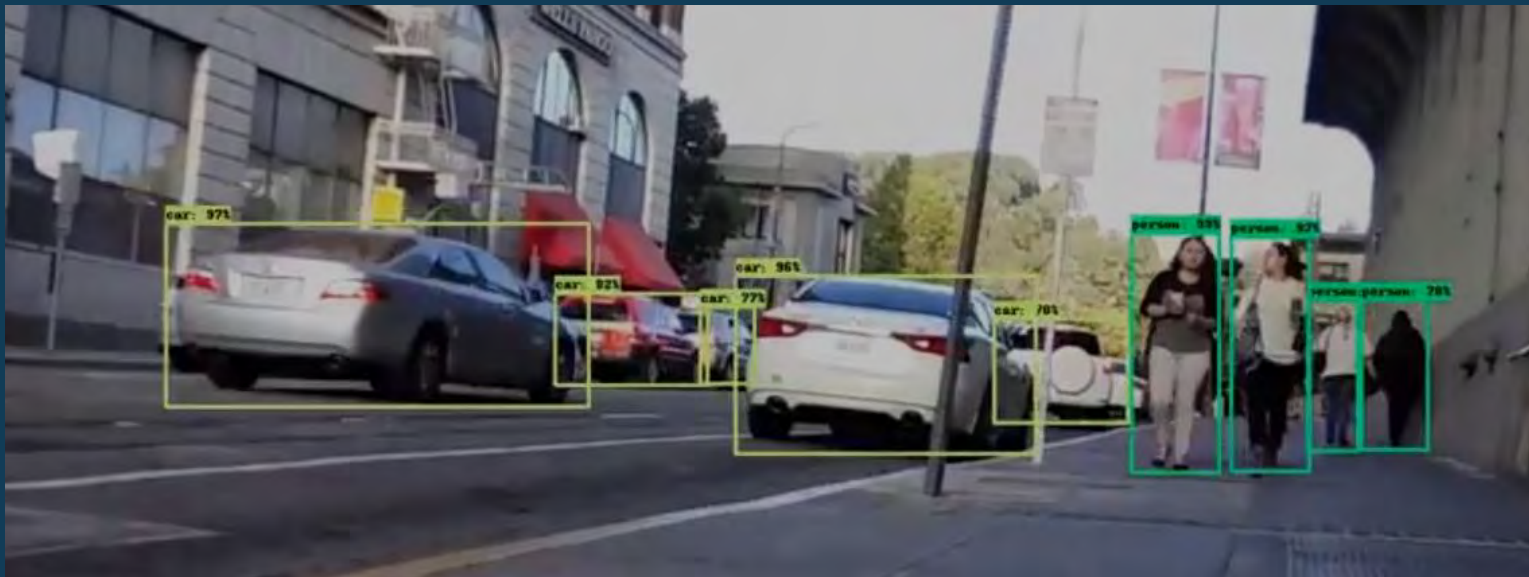
Package Locker Delivery



Cargo Bikes



Robots



Autonomous Vehicles



Drones



- Last Mile Freight Study
 - City of Los Angeles focus
 - Partnership with key public and private stakeholders
 - Data collection and analysis
 - Strategies and recommendations
 - Pilot project concepts
- Curb Space Management
 - Need for comprehensive multimodal approach
 - Opportunities for innovative, technology-driven strategies
 - Pursuit of Caltrans Strategic Partnerships Grant, and other funding sources

Thank you

Scott Strelecki

strelecki@scag.ca.gov

213-236-1893





Program Update

Lindsey Hansen

Active Transportation and Special Programs

December 20, 2018



Recent Activities & Events



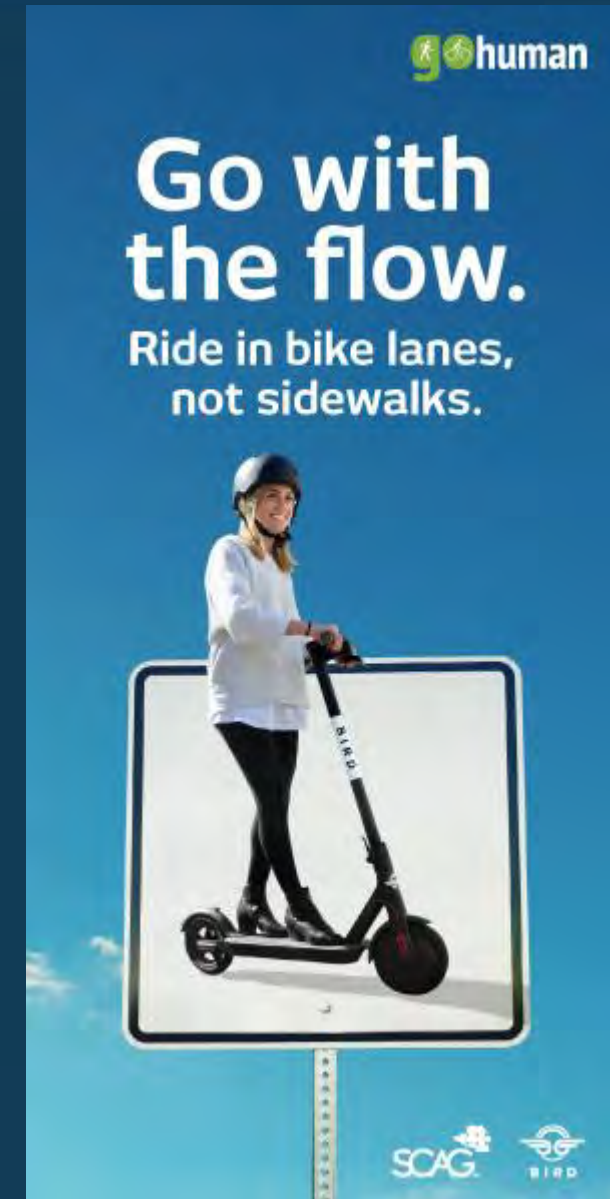
2019 Preview



Scooter Safety Campaign



- Advertising Campaign to Encourage Scooter Safety
 - November 5 – December 21
 - Billboards
 - Bus Tails
 - Social Media
 - Digital Ads
- 16 million impressions
- Funded through partnership with Bird



Demonstration Projects

- Costa Mesa
- Walnut Park
- West Covina
- Ontario
- Culver City
- Chino
- San Jacinto
- La Canada Flintridge
- Lake Elsinore
- Riverside



Demonstration Event Results



214 Surveys Collected

100%

support the pedestrian plaza, creative crosswalks and parklet

90%

want to see these features permanently installed

97%

think the improvements made the street feel safer and more inviting

98%

support more events on Main Street



Top 3 Desired Walking Improvements

- Vibrant things to see and do
- Well maintained and clean sidewalks
- Sidewalk lighting



Top 3 Desired Bicycling Improvements

- More bike lanes
- Separated and protected bike lanes
- On-street lighting

Envision San Jacinto

Demonstration Event Results



36 Surveys Collected

93%

want more events that promote walking and biking

93%

feel inspired to walk or bike more

68%

want the City to invest in an Active Transportation Plan

90%

support making the high visibility crosswalks permanent

31%

feel that destinations are too far to walk or bike in their community



Top 3 Desired Walking Improvements

- Wider sidewalks
- Sidewalk lighting
- Improved pedestrian signage, striping, street delineators



Top 3 Desired Bicycling Improvements

- Striped on-street bike lanes
- Protected on-street bike lanes
- Off-street bike paths

Feet First Step Safe to School

Past Demonstration Events



Active LE

Illuminate
Riverside

Upcoming *Go Human* Activities



Go Human Kit of Parts

- Pop-Up “Library” of supplies
- Partner-Led events
- 6 events by September 2019



Upcoming *Go Human* Activities



- Leadership Safety Symposium (*May 1, 2019*)
- Sub-Regional Safety Workshops (*Summer 2019*)
- Safety Webinars (*Summer 2019*)
- *Go Human* Safety Pledge



Sustainable Communities Program Integration



Go Human Application Add-Ons

- 15 applicants requested *Go Human* Kit of Parts
- 13 applicants requested *Go Human* advertising





   #GoHumanSoCal

Lindsey Hansen

Hansen@scag.ca.gov

213-236-1921



Connect SoCal & ATWG Outlook

Rye Baerg

Senior Regional Planner

December 20, 2018



Our Region



- Nation's largest Metropolitan Planning Organization (MPO)
- Governed by a Regional Council of 86 elected officials

6

COUNTIES

48.1%

STATE POPULATION

SCAG Facts

191

CITIES

5.8%

U.S. POPULATION



19.1
MILLION
RESIDENTS



15th
LARGEST
ECONOMY
IN THE WORLD



What is an RTP/SCS?

- Long-term vision and investment framework
- State Requirements (SB 375)
 - Integrated regional development pattern & transportation network
 - Reduce GHG emission to meet targets for passenger vehicles
- Federal Requirements
 - Updated every 4 years
 - 20+ years into the future
 - Revenues = Costs
 - Passes regional emission standards
 - Public involvement



Active Transportation Appendix



- Existing Conditions
- Active Transportation Investment Strategies
- Supportive Strategies
- Next Steps

Existing Conditions



- Policy Considerations (Health, Equity, Technology)
- Current Infrastructure
- Jurisdictions with Plans
- Stakeholders
- Mode Split and Trip Types
- Emerging Trends
- Progress Since 2016 RTP/SCS
- Needs

Active Transportation Investment Strategies



Investment Types

- Pedestrian Network Investments
 - ADA Improvements
 - Sidewalk Repairs
- Bicycle Network Investments
 - Regional Corridors
 - Greenway Corridors
- Shared Micro Mobility
- First Last Mile Strategies
- Safe Routes to School
- Encouragement Campaigns

Funding Strategies

- Complete Streets
- Active Transportation Program
- Other State Sources
- County Sources
- Local Sources
- Sustainable Communities Program

Supportive Strategies



Strategies that support the implementation of Connect SoCal could include...

- Construct segments of the regional bikeway network linking cities, counties, and intrastate/interstate bicycle routes
- Invest in projects that increase bicyclist and pedestrian access to transit including first/last mile improvements
- Develop projects and programs that increase the number of short trips taken by walking or biking
- Adopt complete streets policies and active transportation plans

Upon adoption of Connect SoCal, SCAG could...

- Conduct research on strategies for mitigating gentrification and displacement related to active transportation investments
- Coordinate with county transportation commissions to develop a regional sidewalk inventory
- Develop a regional methodology and tools for calculating level of traffic stress
- Convene an annual summit on transportation safety
- Expand opportunities to collaborate in Go Human

Connect SoCal

- Winter/Spring 2019 – Scenarios
- Summer – Draft Development
- Fall – Draft Adoption

ATWG

- March 21, 2019 – Safe Routes to School + Encouragement
- June 20, 2019 – Environmental Justice + Equity

Thank you

Rye Baerg

baerg@scag.ca.gov

213-236-1866

