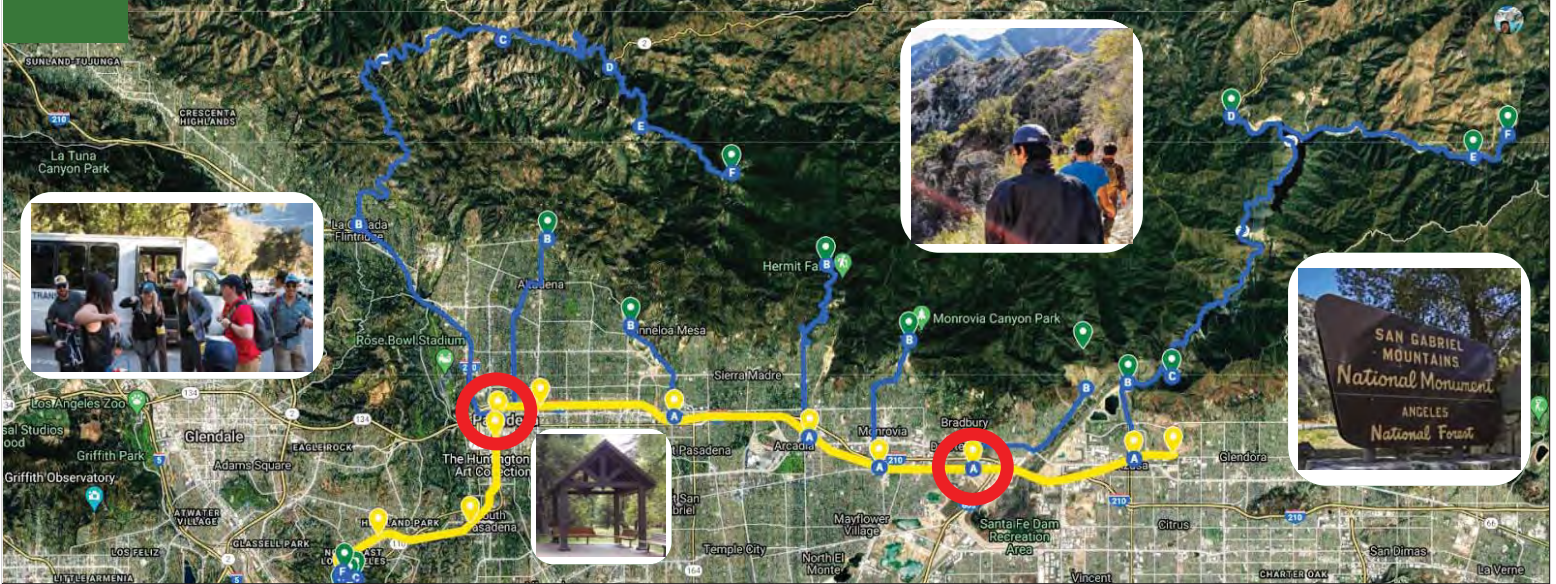




San Gabriel Mountains Transit & Infrastructure Program

Improving regional equity and environmental justice by expanding urban access to healthy outdoor recreation

Overview Apr. 2021



Nature for All

Belinda Faustinos Executive Director
Bryan Matsumoto Program Manager



Mission: Build a diverse base of support to ensure that everyone in the Los Angeles area has equitable access to the wide range of benefits which nature provides.



Protect



Create



Connect

Nature For All Coalition Members





Poor Access to Nature: Impacts us all



Solutions for Access to Nature: We all benefit







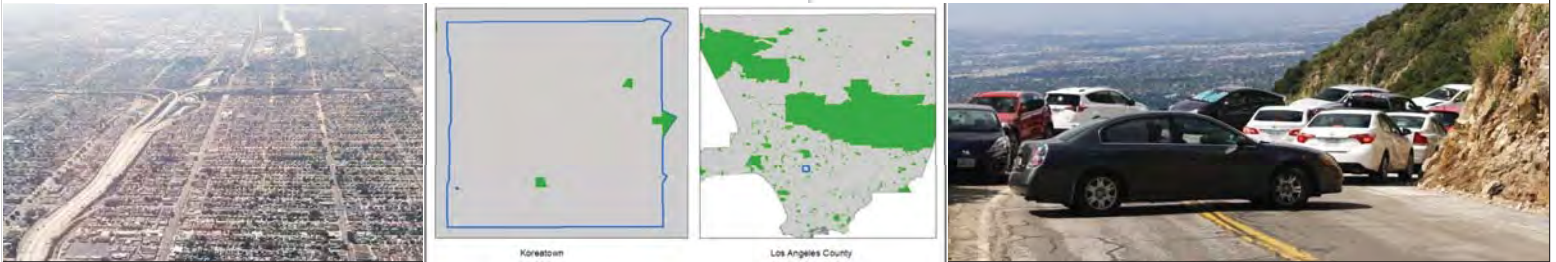






Regional Needs

- **LA is park-poor:** Half of LA County lives in “park-poor” areas. Negative impacts:
 - **Environmental justice:** 82% communities of color
 - **Poor public health:** Childhood obesity, diabetes, air pollution, asthma
 - **Nature deficit:** Losing next generation of environmental stewards
- **Lack of transportation** is #1/#2 barrier to L.A. outdoor access
- Need sustainable vehicle reduction: 4 million forest visitors



The Opportunity: San Gabriel Mountains

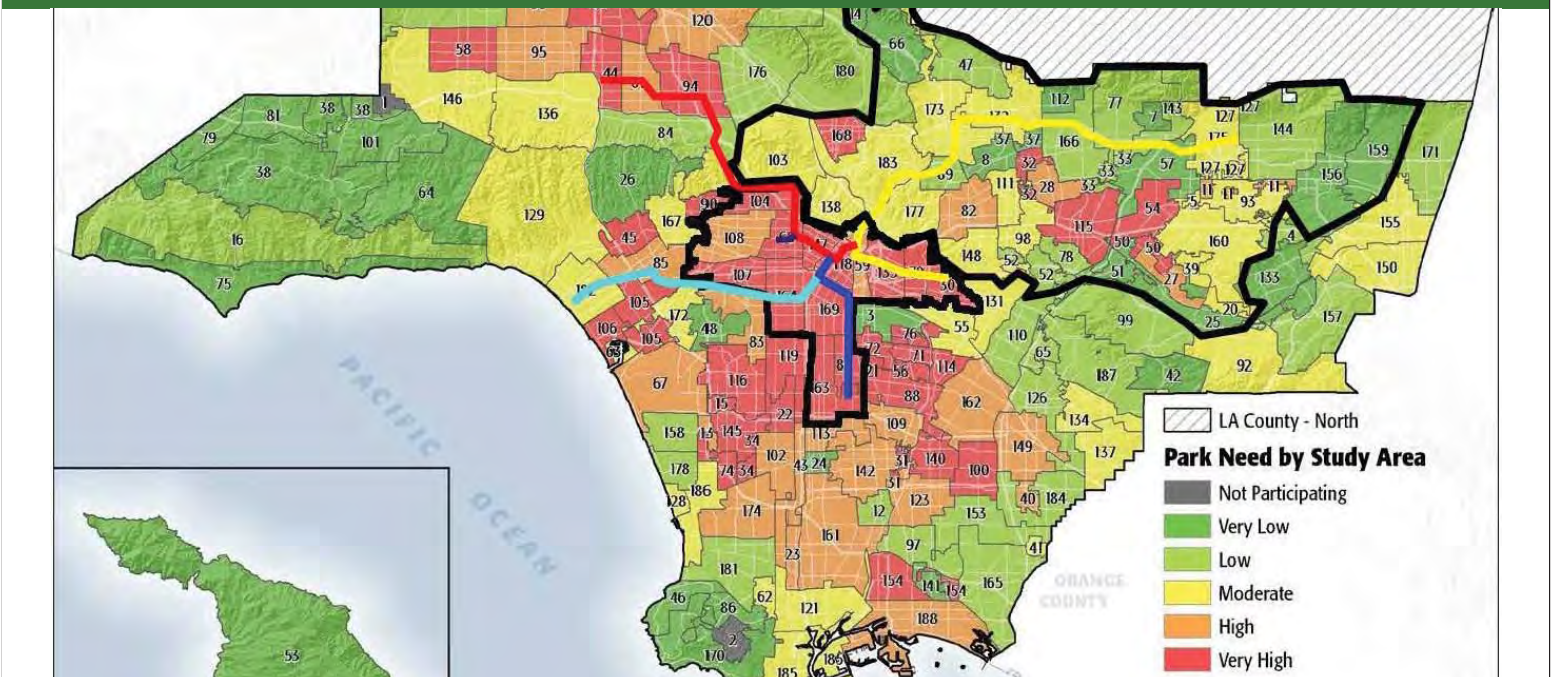


The Opportunity: San Gabriel Mountains

- **70%** of LA County's open space: Most urban national forest in USA.
- 17 million people - **1 in 20 Americans** - within a 90-min. drive
- **Transit-to-Trails are a gamechanger:** Connect the gap - public transit & public lands
- **Connect diverse communities** to the Forest & National Monument
- **Multi-benefits:** Climate action, improve air quality & congestion, support local business districts, grow eco-tourism



Access for All: Disadvantaged Communities



Access to Parks - COVID era? Needed now more than ever

- **In LA County:**
 - Tremendous public demand for the outdoors
 - Revealing stark disparities in nature access
 - Political will & funding aligning to act
 - Desire for multi-benefit, innovative solutions



Now is the time: Access Programs are Priority

- **LA County**
 - BOS support; Transit to Parks / Rec Access funding measures
- **State & Federal**
 - Park equity, Access programs, Social justice
 - Outdoors for All Act (Harris), Transit to Trails Act (Gomez)
- **Multi-benefit:**
 - Health: Public, mental health
 - Climate: Reduce GHG, VMT. Improve clean air, zero-emission tech
 - Economic benefit: local business districts
- **Synergy:** WHAM, 2028 Olympics

Metro Transit to Parks Strategic Plan (2019)



“ With this Plan, Metro describes a vision for coordinating access goals and strategies at the local and County levels so that as a region we can better access parks as well as funding for transit to parks. ”

The Metro Board recently adopted Transit to Parks Strategic Plan (Plan) which is a strategic vision for increasing access to park and open space, specifically for disadvantaged communities. Applicants are encouraged to

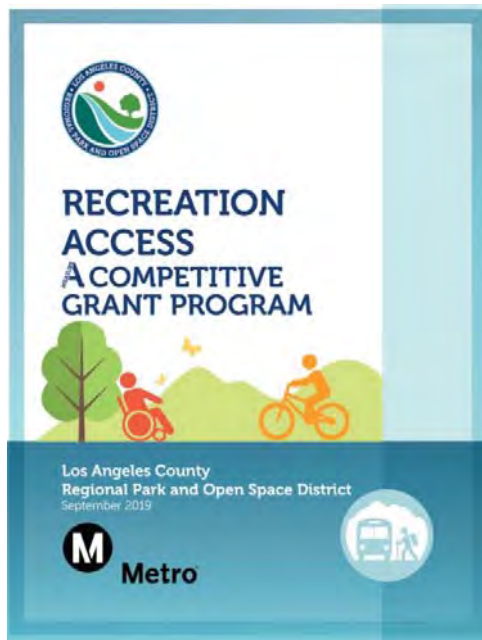
Metro Transit to Parks Strategic Plan (2019)



9 Board actions:

1. Designate a Metro Transit to Parks liaison
2. Create marketing/promotional materials for transit lines serving parks/open space, including a web-based access tool
3. Outreach to Councils of Government (COGs), parks organizations, municipal bus operators, and other partner agencies to promote the Transit to Parks
4. Contribute \$1 million for grants for cities and nonprofits transit to parks programs – to be done in conjunction with the L.A. County Regional Park and Open Space District (RPOSD)
5. Pursue funding for Transit to Parks activities, including providing grant writing assistance to eligible partner agencies and nonprofits
6. Collaborate with L.A. County of Los Angeles Parks and Recreation Department to document data on park access
7. Incorporate Transit to Parks in the NextGen Bus service reorganization
8. Make recommendations on integrating transit-to-parks into 28 by 2028 and Measure M project planning
9. Report back to the Metro Board every six months with status updates

LA County Measure A (Parks) Recreation Access



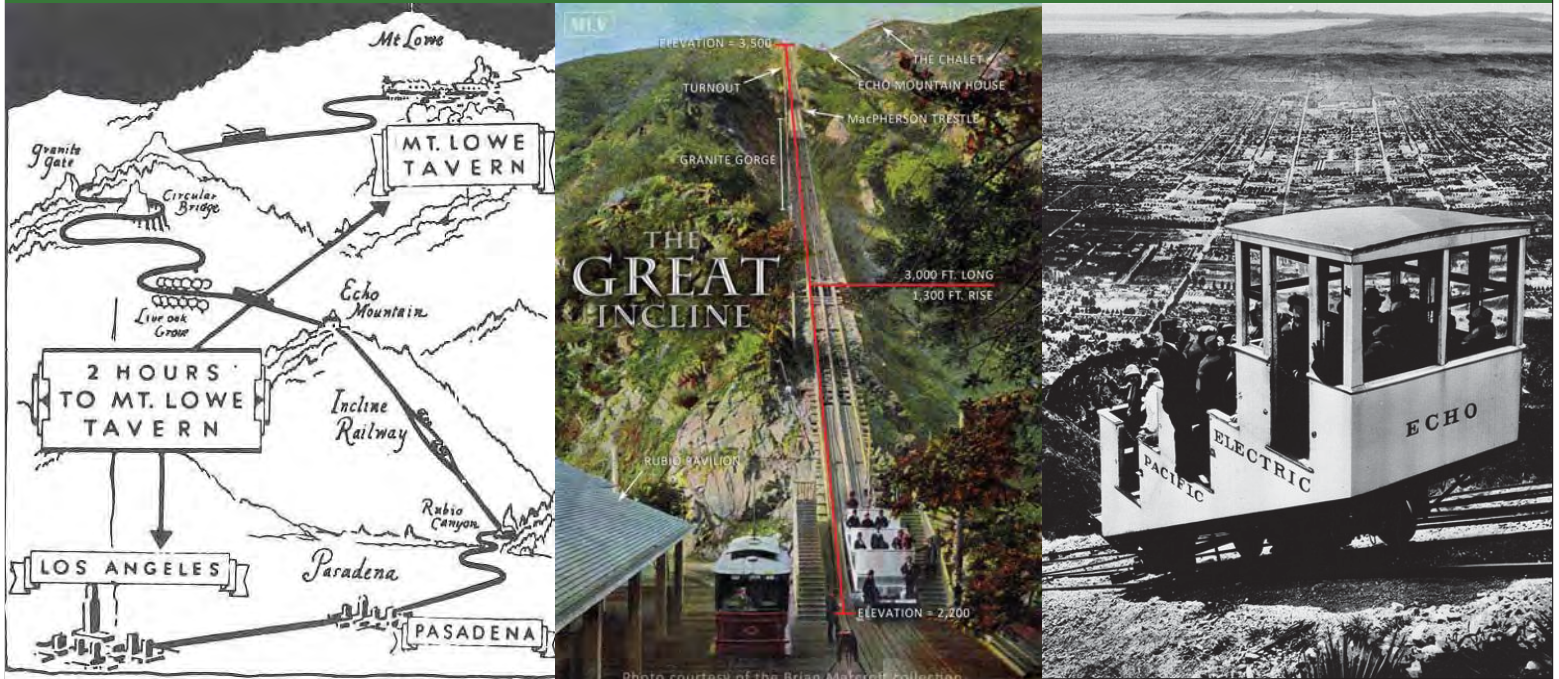
Programs to increase

the ability of residents to access public lands, park facilities, and park amenities, including education, interpretive services, safety information, transportation, and other activities that increase accessibility for County residents, especially those in High-Need or Very-High-Need Study Areas.

Good news!

Existing L.A. Transit-to-Trails

SGV's Transit-to-Trails Legacy: Mt. Lowe Railway



S.G. Mountains Transit-to-Trails Pilot Projects



Partners: Cities of Duarte, Pasadena, Arcadia, The Wilderness Society, LA County Supervisor Barger 5th District, Trust for Public Land, SCE, US Forest Service, National Forest Foundation, REI & Nature for All

Existing Los Angeles Transit-to-Trails

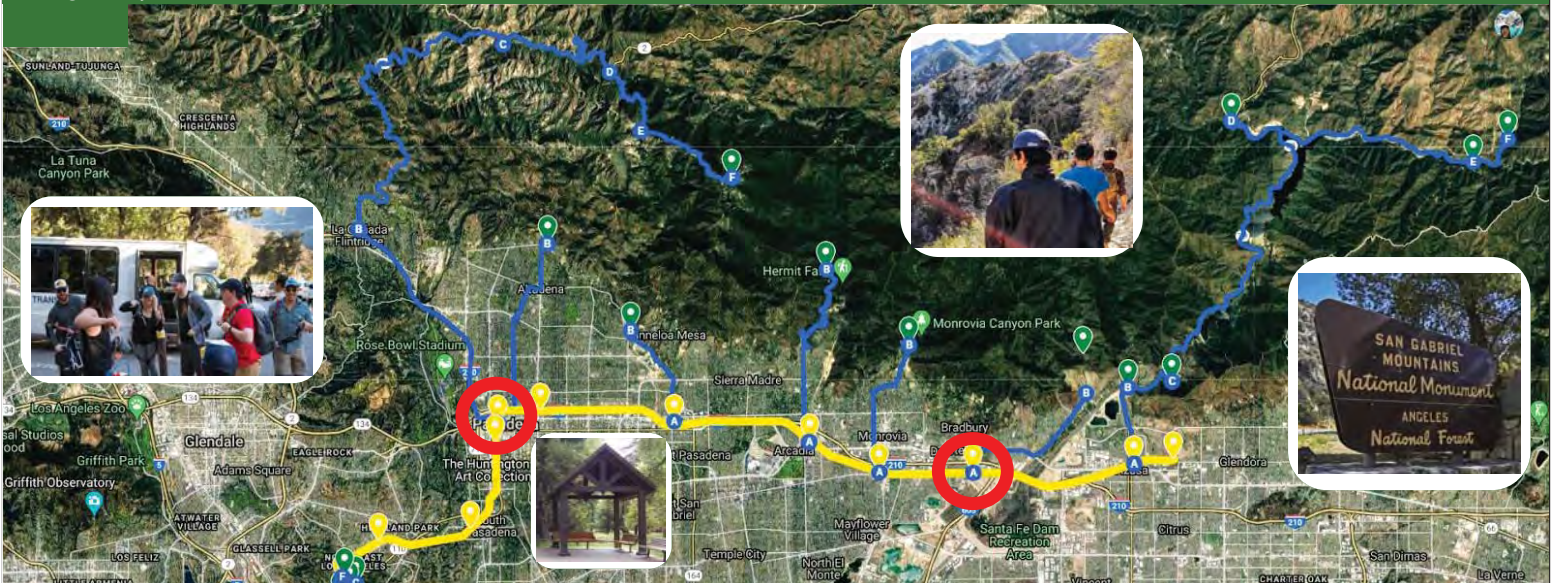


- **Griffith Observatory shuttle** (LADOT)
- **Griffith Parkline shuttle** (LADOT)
- **Baldwin Hills Parklands LINK shuttle** (LA County)
- **Beach Bus** (LA County)
- **Historical Mt. Lowe Railway to San Gabriel Mountains**



San Gabriel Mountains Transit & Infrastructure Program

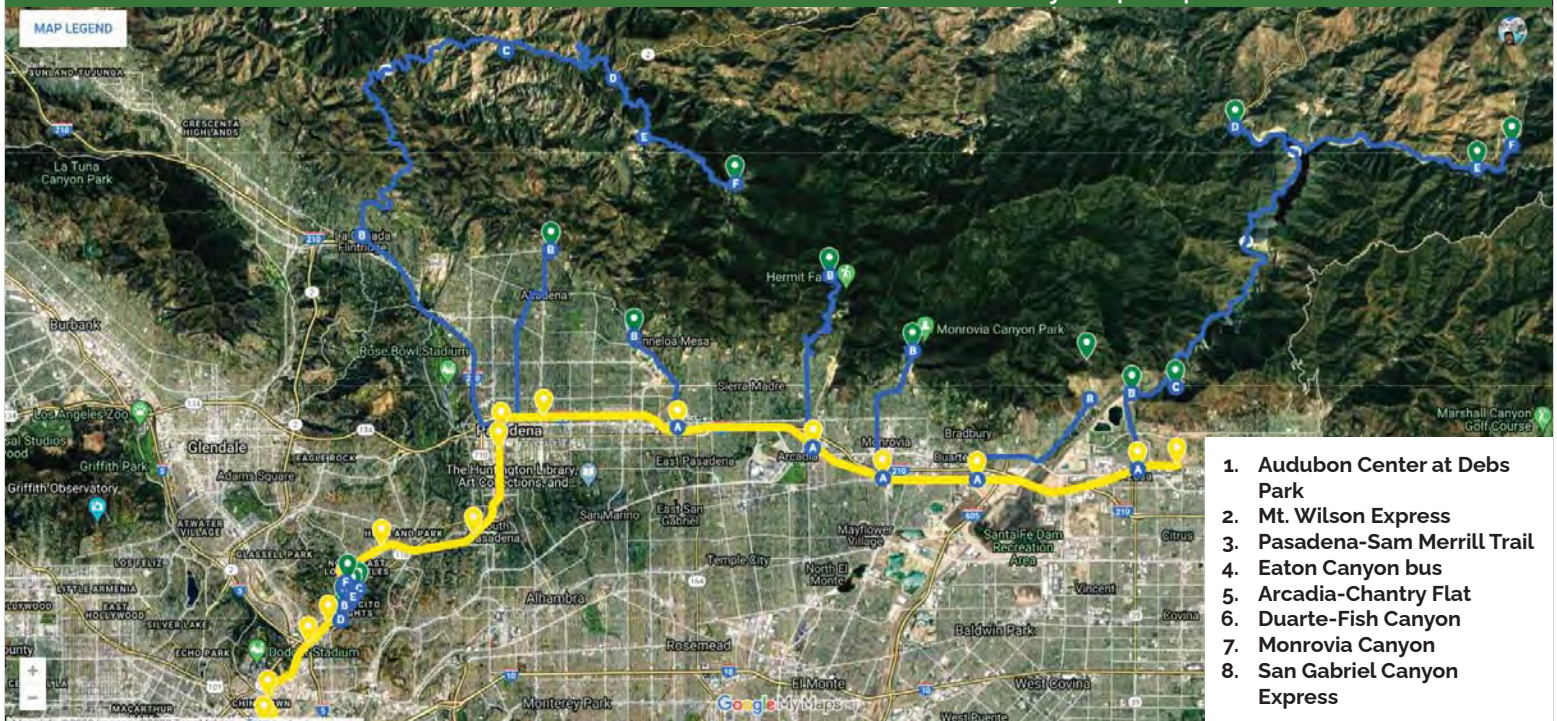
Regionally coordinated

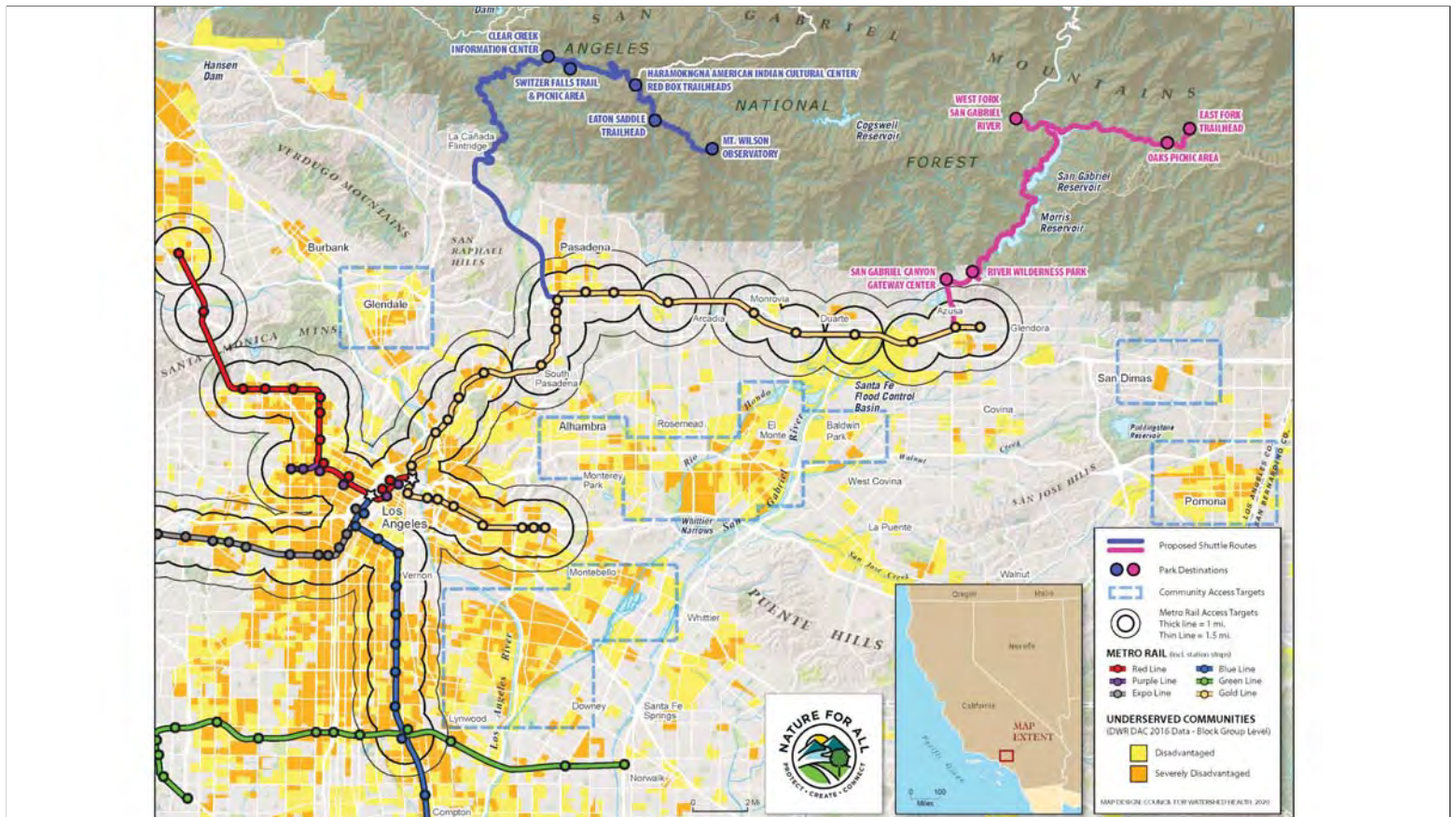


SGM-TIP Core Planning Team

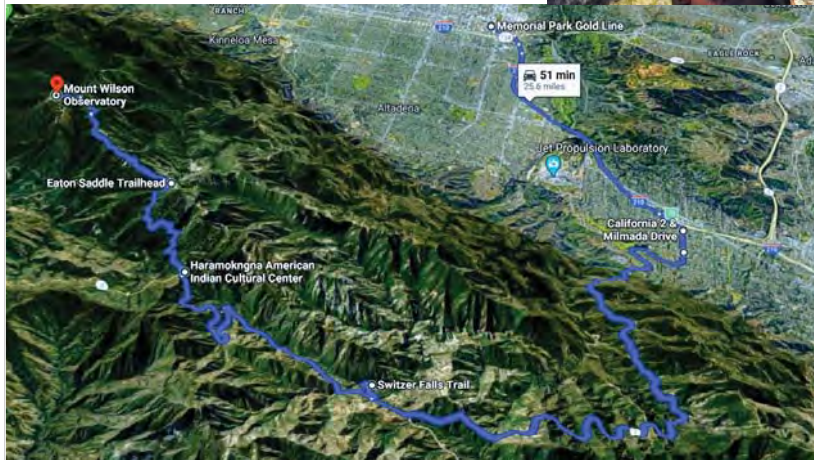
Governmental		
1st District, Los Angeles County Board of Supervisors	Martin Reyes	Transportation Deputy
5th District, Los Angeles County Board of Supervisors	Dave Perry	Transportation Deputy
Southern California Association of Governments (SCAG)	Javier Aguilar	Senior Regional Planner
San Gabriel Valley Council of Governments (SGVCOG)	Alexander Fung	Management Analyst
Transit		
Los Angeles County Metropolitan Transit Authority (Metro)		
Foothill Transit	Ritta Merza	Policy and Programs Manager
San Gabriel Mountains		
US Forest Service (USFS) - Angeles National Forest, San Gabriel Mountains National Monument	Ricardo Lopez Fabian Garcia	Forest Engineer Partnership Coordinator
San Gabriel & Lower Los Angeles Rivers & Mountains Conservancy (RMC)	Joe Gonzalez	Project Analyst II
Mountains Recreation & Conservation Authority (MRCA)	Brian Baldauf	Chief of Watershed Planning
San Gabriel Mountains Community Collaborative (SGMCC)	Daniel Rossman	Chair, Transportation Committee CA Deputy Director, The Wilderness Society
National Forest Foundation (NFF)	Dania Gutierrez	Southern California Program Manager
Funder		
Resources Legacy Fund	Alfredo Gonzalez	Director, Southern California
Advisor		
Modern Hiker	Casey Schreiner	Editor-in-Chief

Transit to Trails linking communities via Metro Rail + shuttles to San Gabriel Mountains (initially 8 proposed routes)





Mt. Wilson Express Route / Highway 2



Departure: Pasadena Gold (L) Line Memorial Park station, to 210 Fwy, to Angeles Crest Highway (2)

- 1. Clear Creek Information Center**
- 2. Switzer Falls trail & Picnic Area**
- 3. Haramokngna American Indian Cultural Ctr, Red Box trailheads**
 - Gabrielino, Strawberry Pk trails
- 4. Eaton Saddle trailhead**
 - Mueller Tunnel, Bear Canyon
- 5. Mt. Wilson Observatory**
 - Trailheads, tours, Cosmic Cafe

San Gabriel Canyon Express / Highway 39



Departure:
Gold Line Azusa Station

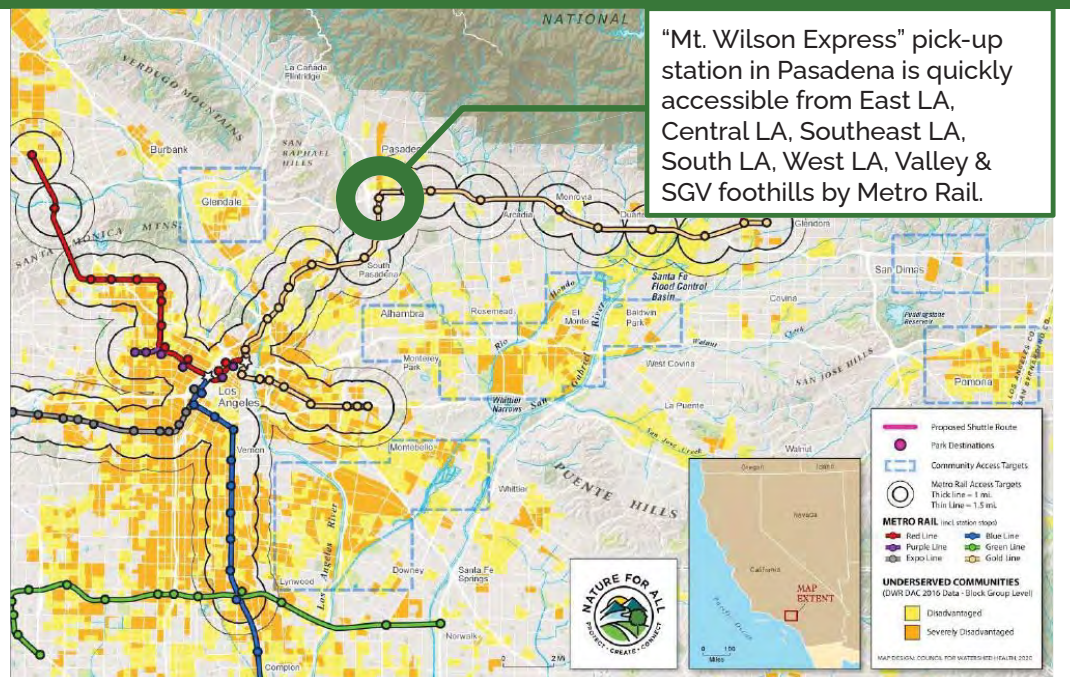
Popular summer destinations:

1. **San Gabriel Canyon Gateway Center**
2. **River Wilderness Park**
3. **West Fork of San Gabriel River**
4. **East Fork of San Gabriel River**
 - Oaks Picnic Area
 - East Fork Trail

Access for All: Disadvantaged Communities

Over 3/4 million residents (764,463) in 486 severely disadvantaged community (SDAC) "blocks" live within one mile of a Metro Rail station*, and will gain public access to the San Gabriel Mountains.

*Service area defined as being within 1.5 hour travel time to Downtown Azusa station. This is the farthest proposed route (San Gabriel Canyon). The other routes from Pasadena, etc are shorter travel time.



"Mt. Wilson Express" pick-up station in Pasadena is quickly accessible from East LA, Central LA, Southeast LA, South LA, West LA, Valley & SGV foothills by Metro Rail.



Proposed Shuttle Route

- Park Destinations
- Community Access Targets
- Metro Rail Access Targets
- Thick line = 1 mi.
- Thin line = 1.5 mi.

METRO RAIL (not shown)

- Red Line
- Purple Line
- Expo Line
- Blue Line
- Green Line
- Gold Line

UNDERSERVED COMMUNITIES (DWR DAC 2010 Data - Block Group Level)

- Disadvantaged
- Severely Disadvantaged

MAP EXTENT
MAP DESIGN: COUNCIL FOR WATER RESOURCES 2020

Regional Support for the Program



U.S. Congressmembers
 Rep. Judy Chu 27th District Rep. Jimmy Gomez 34th District



California State Senator
 Anthony Portantino



County of Los Angeles Board of Supervisors
 Hilda Solis Supervisor, First District Holly Mitchell Supervisor, Second District Kathryn Barger Supervisor, Fifth District

San Gabriel Mountains Community Collaborative



Design + build infrastructure: Shuttle stop



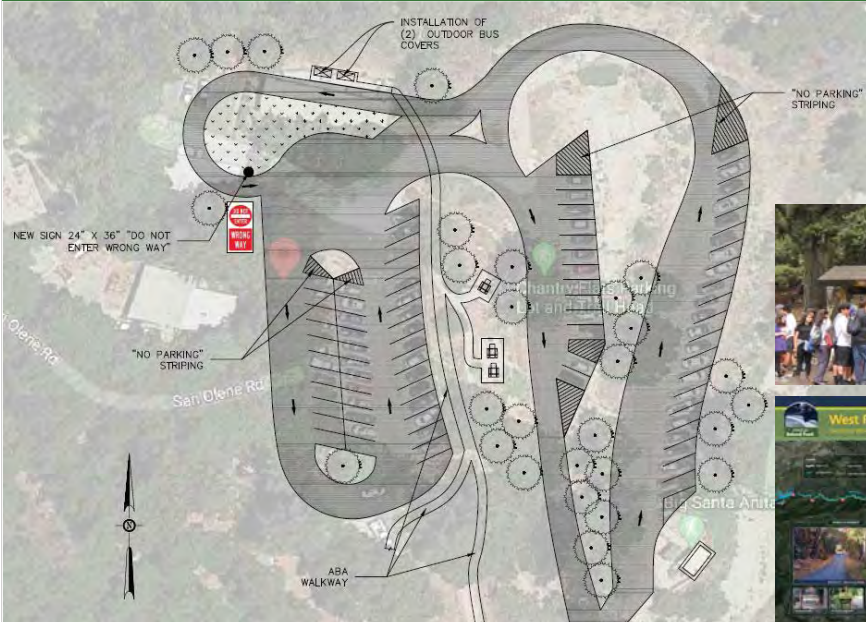
Yosemite



Zion



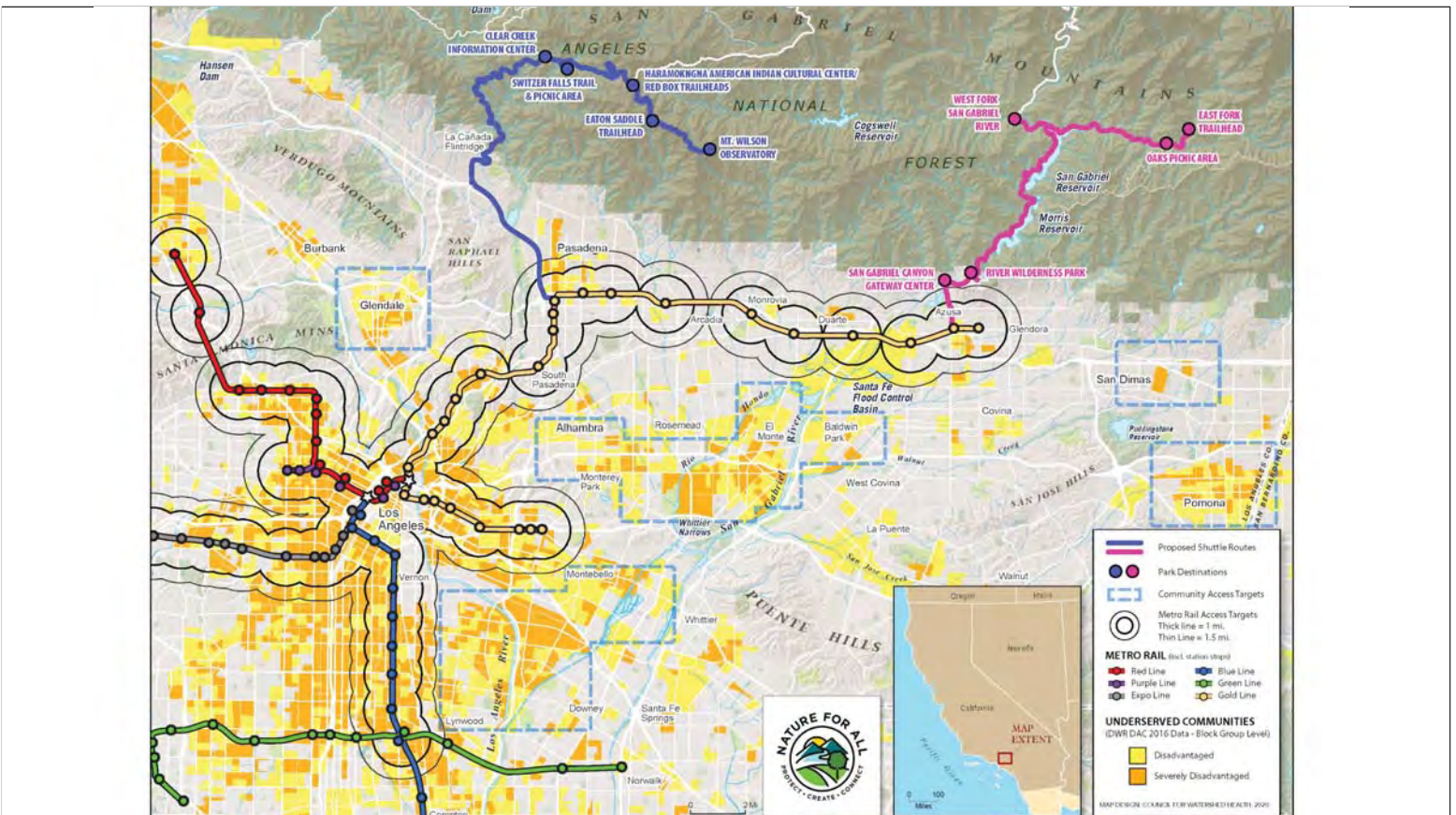
Design + build infrastructure: Shuttle stop



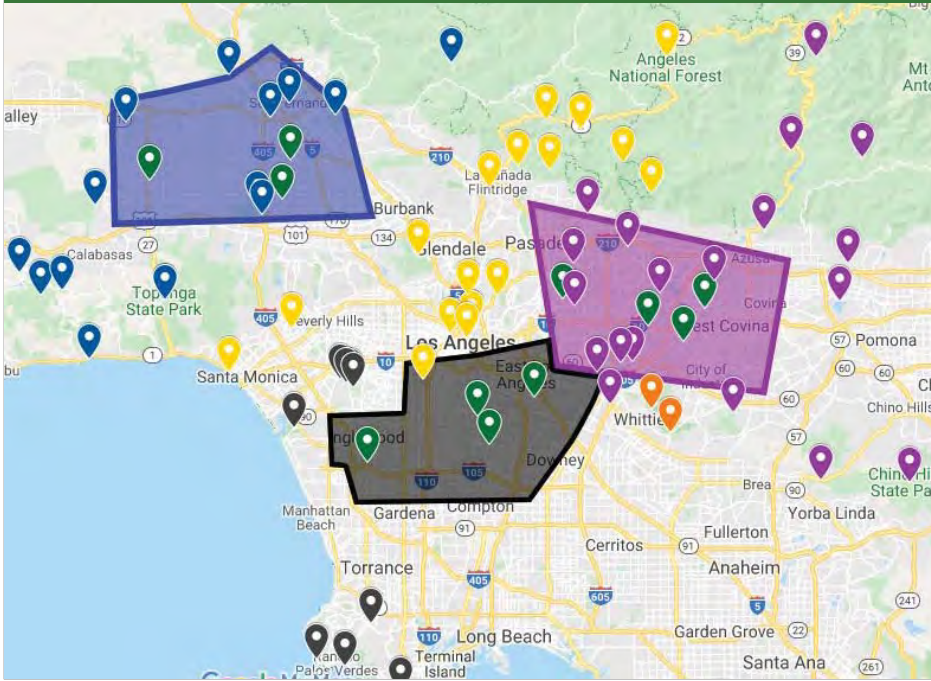
Sample layout for Chantry Flat parking lot - proposed

Reconfigure parking lot to add:

- Shuttle stop
- Shelter
- Seating
- ADA-ABA path
- Wayfinding & interpretive signage



Community Transit Program - "Field Trip!"



- **Organized trips with direct shuttle**
- From community hubs farther from transit, natural areas
- Ex: "Hollywood Bowl" shuttle
- Include naturalist interpreter for programming

Calls to Action: Get residents outdoors



- Fight nature deficit disorder!
- Use **Parks & Recreation** departments
 - **Nature education programs in parks**
 - Partner with organizations, agencies
 - iNaturalist challenges
 - Walking clubs
 - **Field trips** to local nature destinations

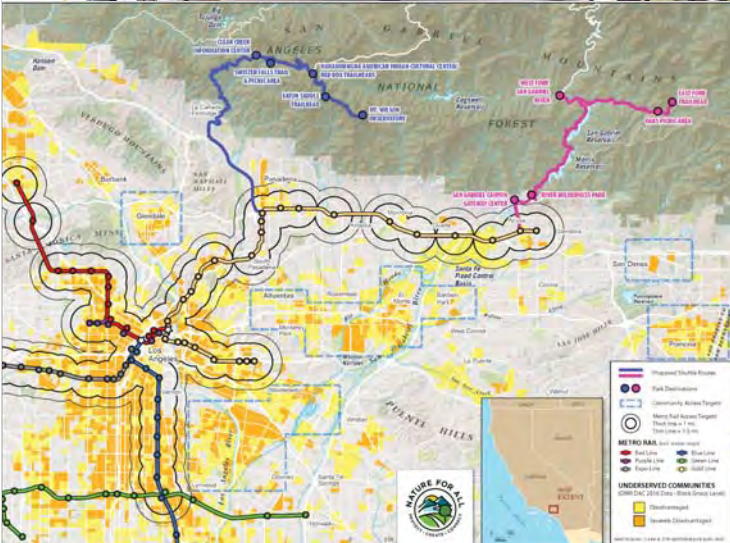
Calls to Action: Prioritize Transit to Parks



- Make Transit to Parks **agency priorities** to **direct transportation funding for equity & access**
- Direct **Transit Agencies** to address Transit to Parks gaps
 - E.g. **Request *Metro Transit to Parks* support, grants & technical assistance**
- Advocate for Transit to Parks funding, legislation:
 - State & Federal access programs
 - Transit to Parks Act (Gomez)
- Support & fund **San Gabriel Mountains Transit & Infrastructure Program**



San Gabriel Mountains Transit & Infrastructure Program Thank you. Questions?



Bryan Matsumoto bryan@lanatureforall.org (626) 246-8634

Background information slides

Successfully Demonstrated Pilots

Successfully Demonstrated Pilots



Duarte Fish Canyon Shuttle



Departure: GL Duarte Station
Operator: City of Duarte

- First new T2Trails service to San Gabriel Mountains
- Apr-May 2016, Saturdays 7 am-6 pm. Every 30 mins.
- Funding: Measure R local return
- Fire damage closed trail Jun 2016; City to explore significant trail restoration. Will resume after.

Pilot: Chantry Flat Shuttle 1.0



Departure: GL Arcadia Station

Operator: US Forest Service, (transit contractor)

- Partners: The Wilderness Society, National Forest Foundation, REI
- Date: Sep. 2017, 4 weekends.
- Frequency: 30-45 min.
- Travel time: 25 min, 1-way.

Pasadena Sam Merrill Trail (Echo Mountain)

88 Trailhead to Echo Mountain/ Inspiration Point

M Memorial Park Station

Get to the Point!
Your Transportation to Inspiration

Starting April 7 and into the summer, take Pasadena Transit Route 88 from Memorial Park Gold Line Station to Echo Mountain/ Inspiration Point Trailhead. Bus leaves every half hour from the Raymond & Holly bus stop from 7:05 a.m. – 4:35 p.m. Saturdays and Sundays. Last bus leaves the Trailhead at 5:00 p.m.

Route 88 is a local service. Travel time to the trailhead is 23 minutes.

For more information call 626-744-4055 or visit www.pasadenatransit.net.

REAL TIME ABOARD INFORMATION



Departure: GL Memorial Park Station (Pasadena)

Operator: City of Pasadena

- Echo Mountain & Inspiration Point Trails
- Fall 2018, Frequency: 30 min. Travel time: 23 min
- Partners: 5th District, SoCal Edison, Trust for Public Land, The Wilderness Society.

Pilot: Chantry Flat Shuttle 2.0



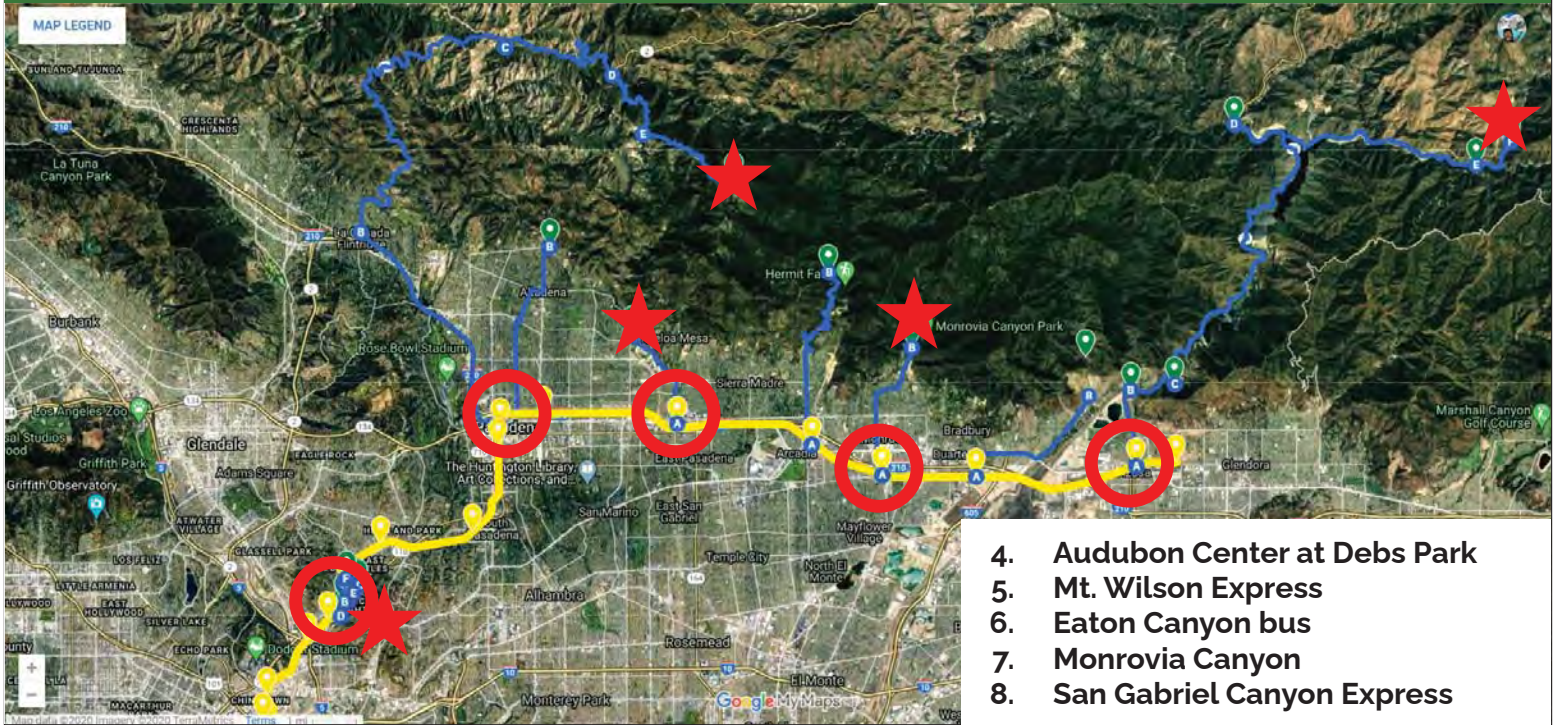
Departure: GL Arcadia Station

Operator: City of Arcadia, First Transit (contractor)

- Partners: Nature for All, US Forest Service, National Forest Foundation, REI
- Date: Sep. 2019, 1 Saturday
- Frequency: 30-45 min. 3 shuttles.
- Travel time: 25 min, 1-way.

Additional proposed San Gabriel Mountains & nearby nature routes

Additional proposed SGM & nearby routes



Audubon Center at Debs Park



Departure: GL Southwest Museum Station (Northeast LA)

- Key nearby urban natural area
- 1. Pedestrian path**
 - a. First-last mile connection
 - b. 15 min. walk
- 2. Circulator Shuttle**
 - a. Connect key cultural, historical sites: Lummis Home, Heritage Square, Southwest Museum

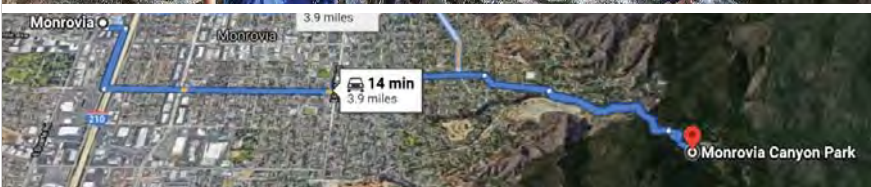
Eaton Canyon bus connector



Departure: GL Sierra Madre
Villa Station (East Pasadena)

- Leverage existing bus routes
 - Metro Bus 264
 - Pasadena Transit 32
- Improve branding, schedule, routes
- First/Last Mile pedestrian path

Monrovia Canyon shuttle



Departure: GL Monrovia
Destination: Monrovia
Canyon Park

- Monrovia Falls
- Nature Center
- Picnic Area
- Historic Ben Overturff Trail