

Equity Working Group

Regional Planning Working Group

Thursday, December 9, 2021

www.scag.ca.gov



Session Logistics



The meeting will take approximately two hours.



All participant lines will be muted.

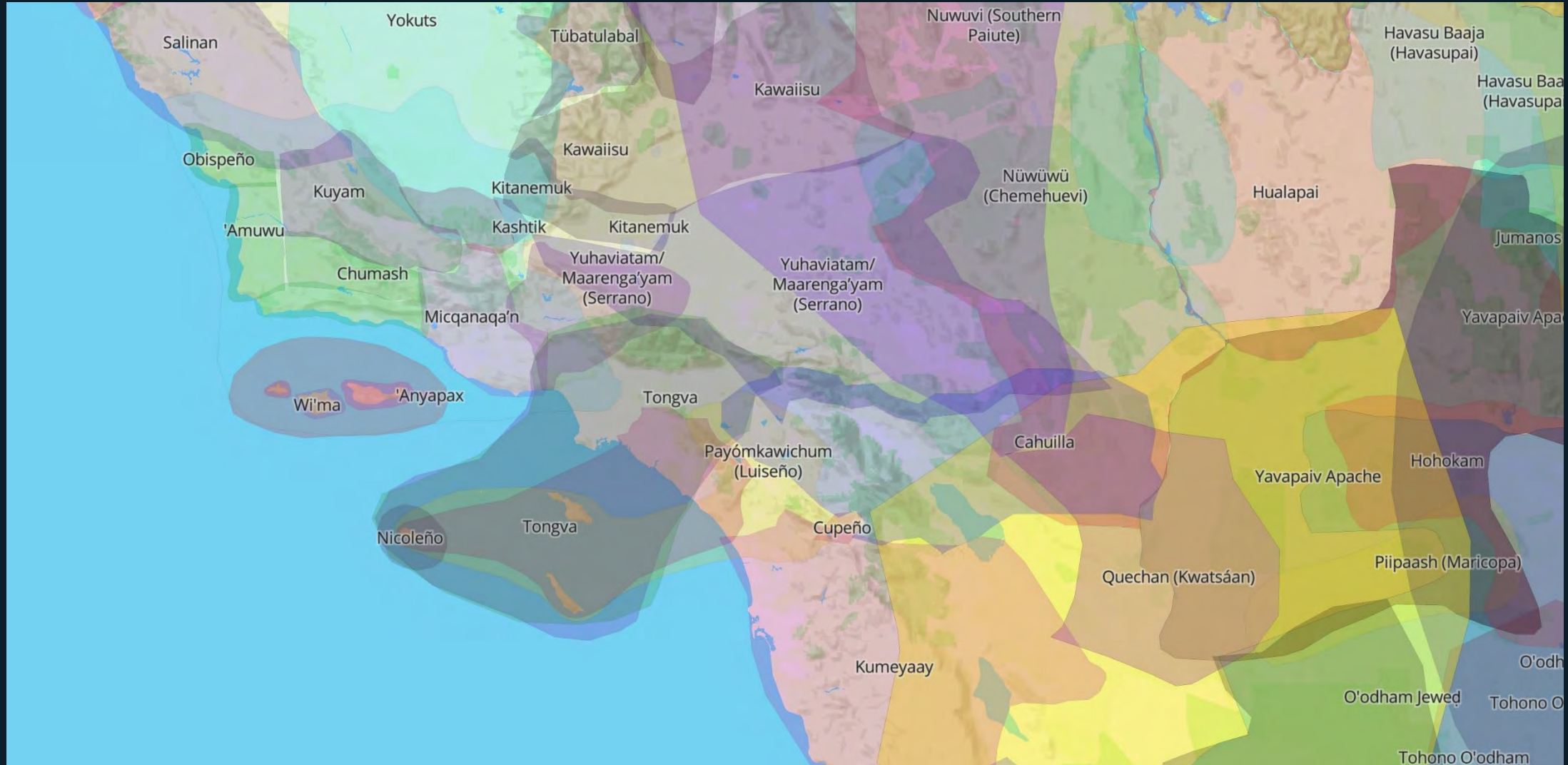


At the end of each presentation, there will be a Q & A. If you have a question, please type it into the chat box.



All presentations will be emailed to those who registered to participate in today's meeting.

Land Acknowledgement



Agenda



1. **Welcome**
• *Courtney Aguirre, Program Manager, SCAG* 1:00 – 1:05pm

2. **Los Angeles Metro Equity Tools**
• *KeAndra Cylear-Dodds, Executive Officer, Equity and Race, LACMTA* 1:05 – 1:30pm

3. **Equity in Action: City of Pomona Racial Equity StoryMap**
• *Anita Gutierrez, Development Services Director, City of Pomona* 1:30 – 1:45pm

4. **Environmental Justice Element: City of Palmdale**
• *Megan Taggart, Planning Manager, City of Palmdale* 1:45 – 2:00pm

5. **Environmental Justice General Plan Collaboration: City of Santa Ana**
• *Melanie McCann, Principal Planner, City of Santa Ana* 2:00 – 2:15pm

6. **SCAG Equity Indicators**
• *Anikka Van Eyl, Junior Planner, SCAG* 2:15 – 2:25pm

7. **SCAG SoCal Goods Movement Impacted Communities Study**
• *Alison Linder, Senior Regional Planner, SCAG* 2:25 – 2:40pm

8. **Announcements**
• *Anita Au, Senior Regional Planner, SCAG* 2:40 – 2:45pm

LA Metro Equity Tools



CHIEF EXECUTIVE OFFICE

KeAndra Cylear Dodds, Executive Officer
Cyleardoddsk@metro.net


Metro Equity Platform


- Board Approved as of March 2018
- Core Objective:
 - Increase access to opportunity
- Four Pillars
 - Define and Measure
 - Listen and Learn
 - Focus and Deliver
 - Train and Grow

metro.net/resources

We're working to eliminate disparities and expand access for all.

EQUITY PLATFORM
Overview



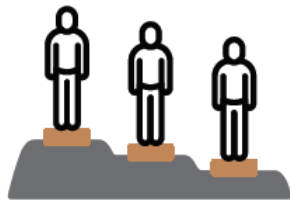
 **Metro**

Metro is committed to providing equitable service and project delivery, policymaking, and resource distribution. This means accounting for the different histories, challenges and needs of communities across LA County.

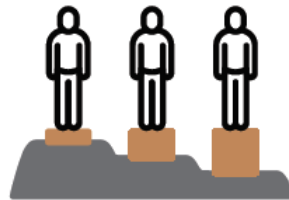
Shared Language and Understanding

Equity is both an outcome and a process to address disparities to ensure fair and just access to opportunities.

Equality is not the same as equity, and ultimately we're striving for justice.



EQUALITY



EQUITY



JUSTICE



Metro

CHIEF EXECUTIVE OFFICE

Metro's Equity Tools

- Metro Budget Equity Assessment Tool
- Rapid Equity Assessment
- Metro Equity Planning and Evaluation Tool

Metro's Equity Tools

- People focused
- Outcomes oriented
- Data and Community Engagement
- Benefit/Burden Analysis
- Iterative Process



Metro

CHIEF EXECUTIVE OFFICE

Metro Budget Equity Assessment Tool (MBEAT)

- First Equity Tool Implemented Agencywide
- Identifies potential impacts to marginalized groups
- Guides budget priorities
- Tracks staff equity fluency

Rapid Equity Assessment (REA)

- The First Metro Equity Tool
- Developed for quick, preliminary, or emergency assessments
- Used for Board Report Equity Assessments
- Default Equity Tool

Equity Planning and Evaluation Tool (EPET)

- Currently in the Pilot Phase
 - I-710, Traffic Reduction Study, Etc.
- Created for Project Development Processes
- Best for Major Capital Projects and Initiatives

Questions?



Metro

CHIEF EXECUTIVE OFFICE

POMONA EQUITY MAPPING

PRESENTED BY: ANITA D. GUTIERREZ –DSD DIRECTOR



STORY MAP

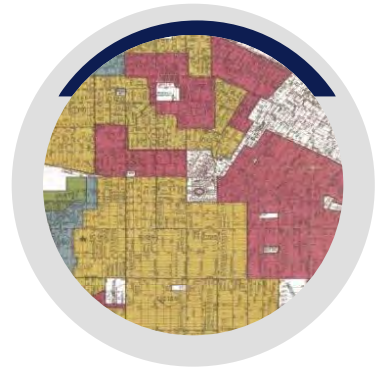
This story map explores the foundational land use practices and decisions that paved the way for systemic inequities in development patterns, some of which can still be seen in Pomona today.

Through maps we analyze visual evidence of how federal redlining and freeway development carved structural racism and environmental injustices into our community.

In order to address these inequities and bring forward meaningful, transformative policies for change, it is critical to understand how these imbedded discriminatory policies created conditions for inequity and their lasting impacts on the community.



KEY THEMES



REDLINING

“Today’s residential segregation in the North, South, Midwest, and West is not the unintended consequence of individual choices and of otherwise well-meaning law or regulation but of unhidden public policy that explicitly segregated every metropolitan area in the United States.”

— Richard Rothstein, *The Color of Law: A Forgotten History of How Our Government Segregated America*



FREEWAY ADJACENCY

There are four major freeways that bisect Pomona – Interstate 10, State Route 57, State Route 71, and State Route 60 with Interstate 210 just North of Pomona.



HEALTH EQUITY

The long lasting consequences of disinvestment in communities can be seen in the built environment, such as tree cover, freeway location, infrastructure improvements and more. Historically, redlined communities experience increased heat exposure, more impervious surface, fewer trees, and lower air quality and recent research has shown these communities, also have high mortality rates due to COVID-19.



MOTIVATION

WHY CREATE A STORY MAP?



MT. ZION CHURCH – CULTURAL LANDMARK

Mt. Zion Baptist Church, recently designated as a local landmark for its significance the first Black church to have on-going programs in the City of Pomona run by members of the Black community. The structure served as a space for a small Black community in Pomona to congregate amidst Federal redlining practices preventing Black homeownership in the same community.



During the 1930's the Federal Housing Administration (FHA) prevented Black homeownership pushing Black families out of suburbs creating a national housing shortage for Black families. Many of the challenges in Federal Court to prohibit the discriminatory actions of the FHA as well as other significant civil rights efforts were led by the NAACP. The NAACP local Pomona Valley Chapter regularly held meetings at Mt. Zion Church during this period of history.



LACK OF OPEN SPACE

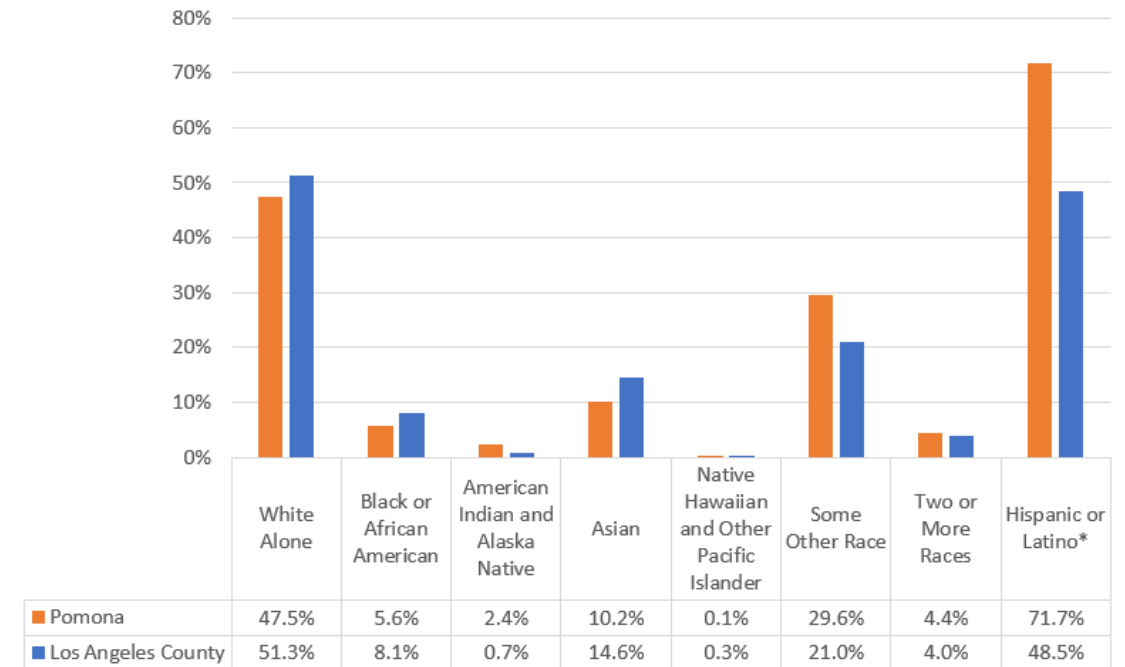
The City recently did some work on right-sizing our parks and recreation impact fees. The City currently provides 1.25 acres of parkland per 1,000 residents, however the City strives to achieve a higher ratio of 3 acres per 1,000 residents as stated in the adopted General Plan



PUSH FOR DATA DRIVEN ANALYSIS

- **Bloomberg Harvard City Leadership Initiative**
- **Determining investment priorities**
- **Future zoning efforts**
- **Grant funding**
- **Community transparency**

Figure 2-2: Racial and Ethnic Composition (2019)



*Of any race.

Source: American Community Survey, 5-Year Estimates, 2019.

STORY MAP CONTENTS

- Redlining Maps
- Community Profile
 - Education, income, job data
- Freeway Analysis
- Asthma Rate Map
- Tree Canopy Cover
 - Social Vulnerability Index
- Parks and Open Space Map
- Climate Risk Map
- Zoning Map
- Hispanic/White Population Map





FUTURE EQUITY WORK

CONTINUED EQUITY WORK (FUNDED)



Prohousing Pomona –Housing Element
Complete Streets Ordinance
Zoning Code Update
Public Health Fellows
Parks Master Plan
Claremont-Lincoln University Partnership

Environmental Justice Element
Anti-Gentrification Policies
Engage Community Health Workers
Interdisciplinary Approach to Connecting Fair
Housing Challenges with Public Health Outcomes



CONTINUED EQUITY WORK (UNFUNDED)



THANK YOU!



ANITA.GUTIERREZ@POMONACA.GOV



[HTTP://WWW.POMONACA.GOV](http://WWW.POMONACA.GOV)

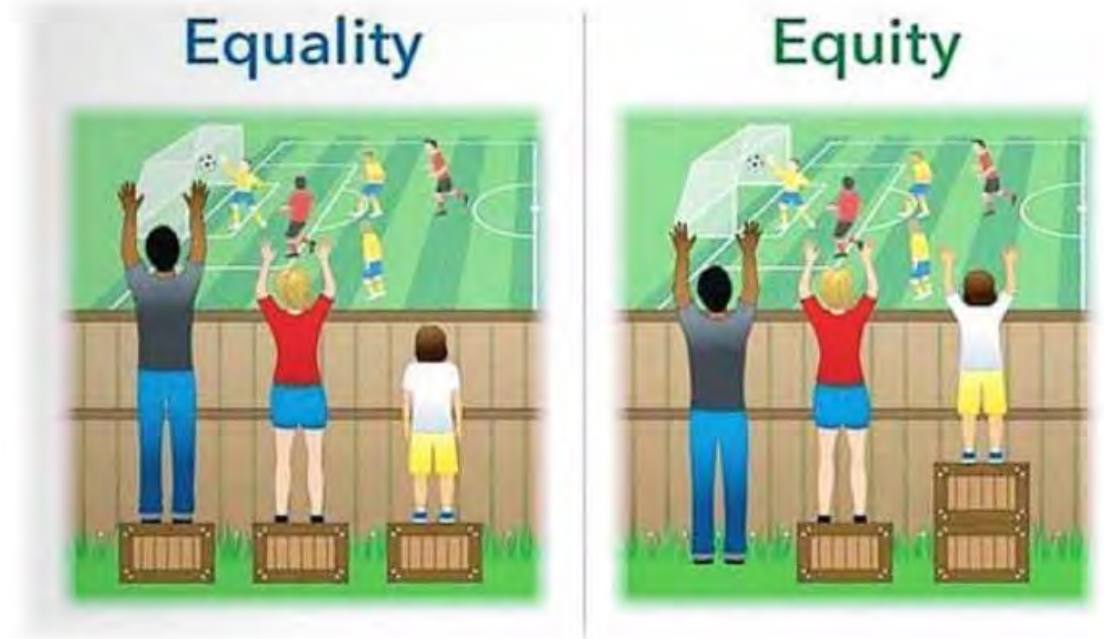
Envision
PALMDALE 2045

Health, Equity and Environmental Justice

December 9, 2021

What is Equity?

- When socioeconomic and environmental factors can no longer be used to predict life outcomes and outcomes for all groups are improved
- Socioeconomic and environmental factors
 - Race
 - Gender
 - Income
 - Place
 - Education



Environmental Justice Element (Integrated or Stand-Alone)

- Passed in 2016 to address health disparities to low income communities
- Three Step Process:



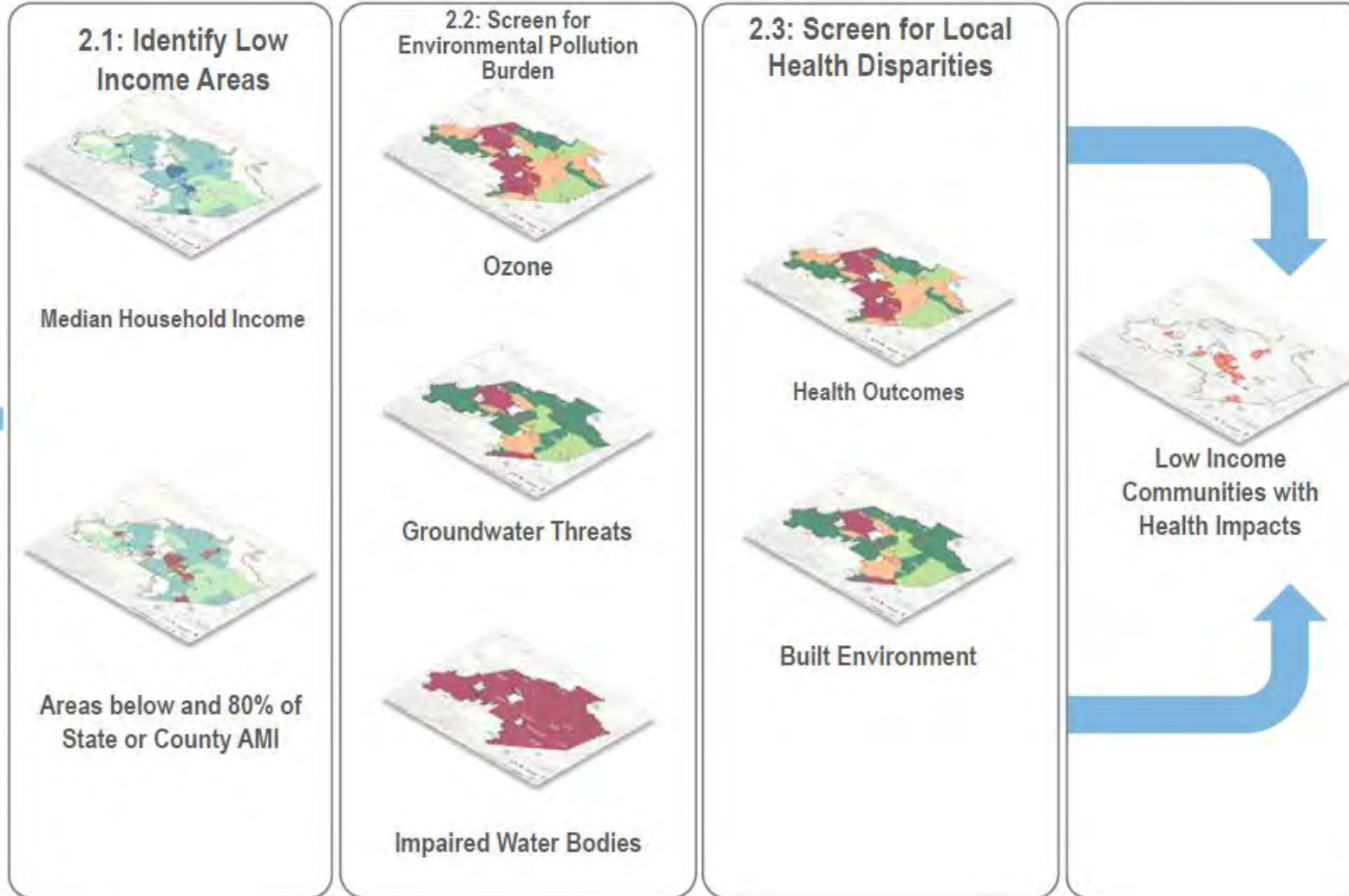
- Topics addressed:
 - **Pollution exposure** (air quality, water quality, etc.)
 - **Public facilities** (parks, schools, health facilities, etc.)
 - **Safe and sanitary homes** (housing cost and quality)
 - **Physical activity** (walkable communities, transportation safety, etc.)
 - **Other** identified health risks or burdens (food access, etc.)

Disadvantaged Communities Screening Process

Method 1: CalEnviroScreen 3.0



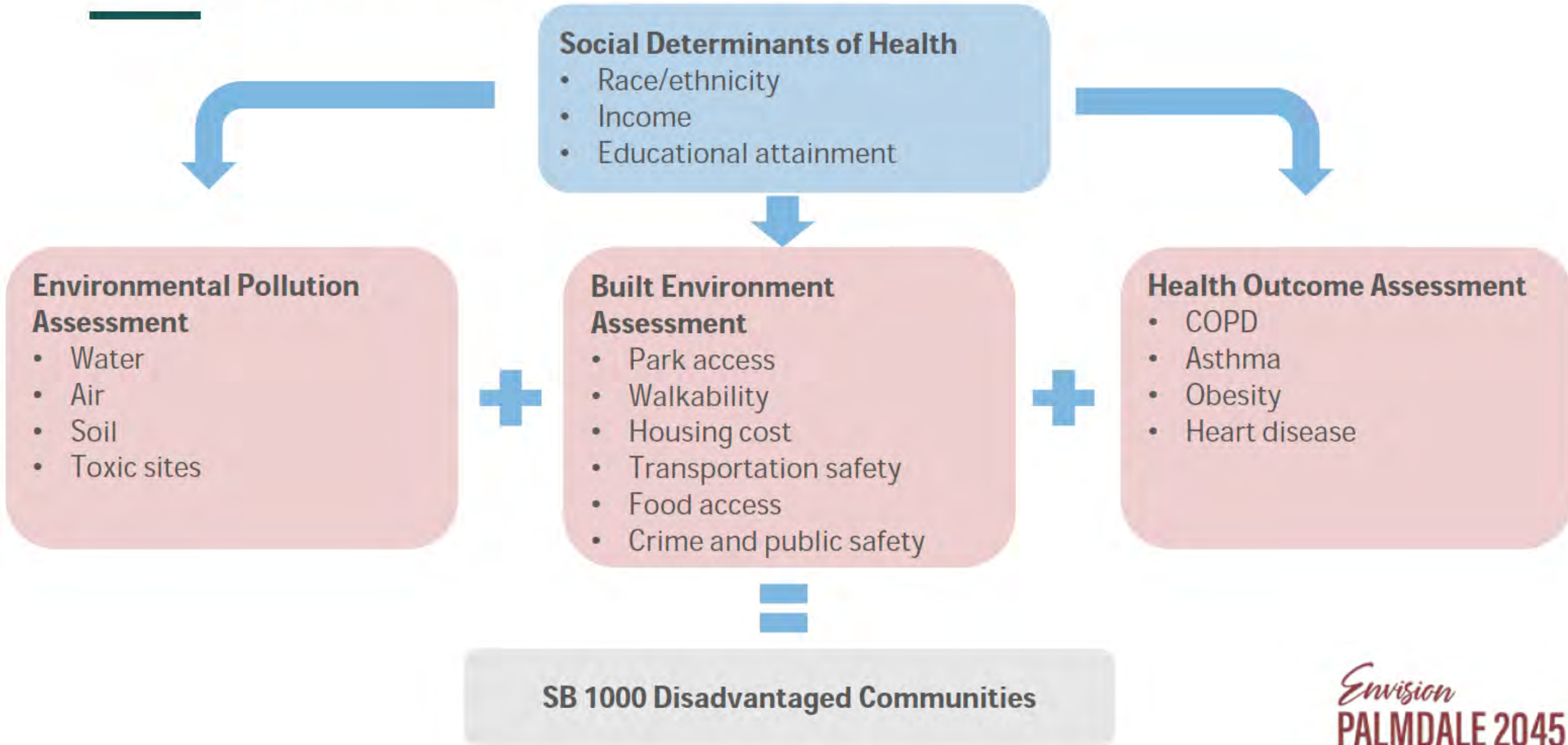
Method 2: Low Income Communities with Pollution Burden and Other Disparities



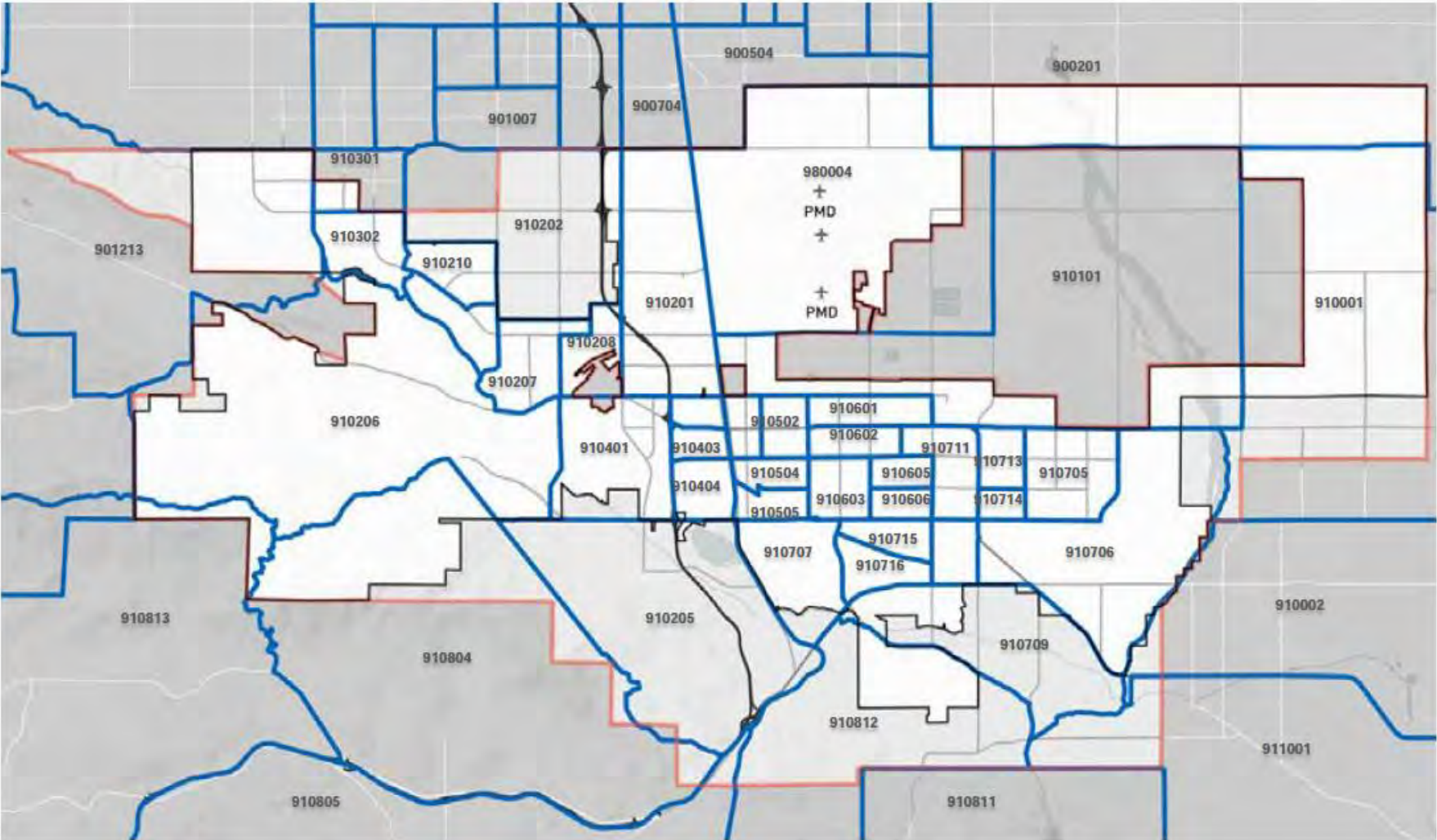
Results



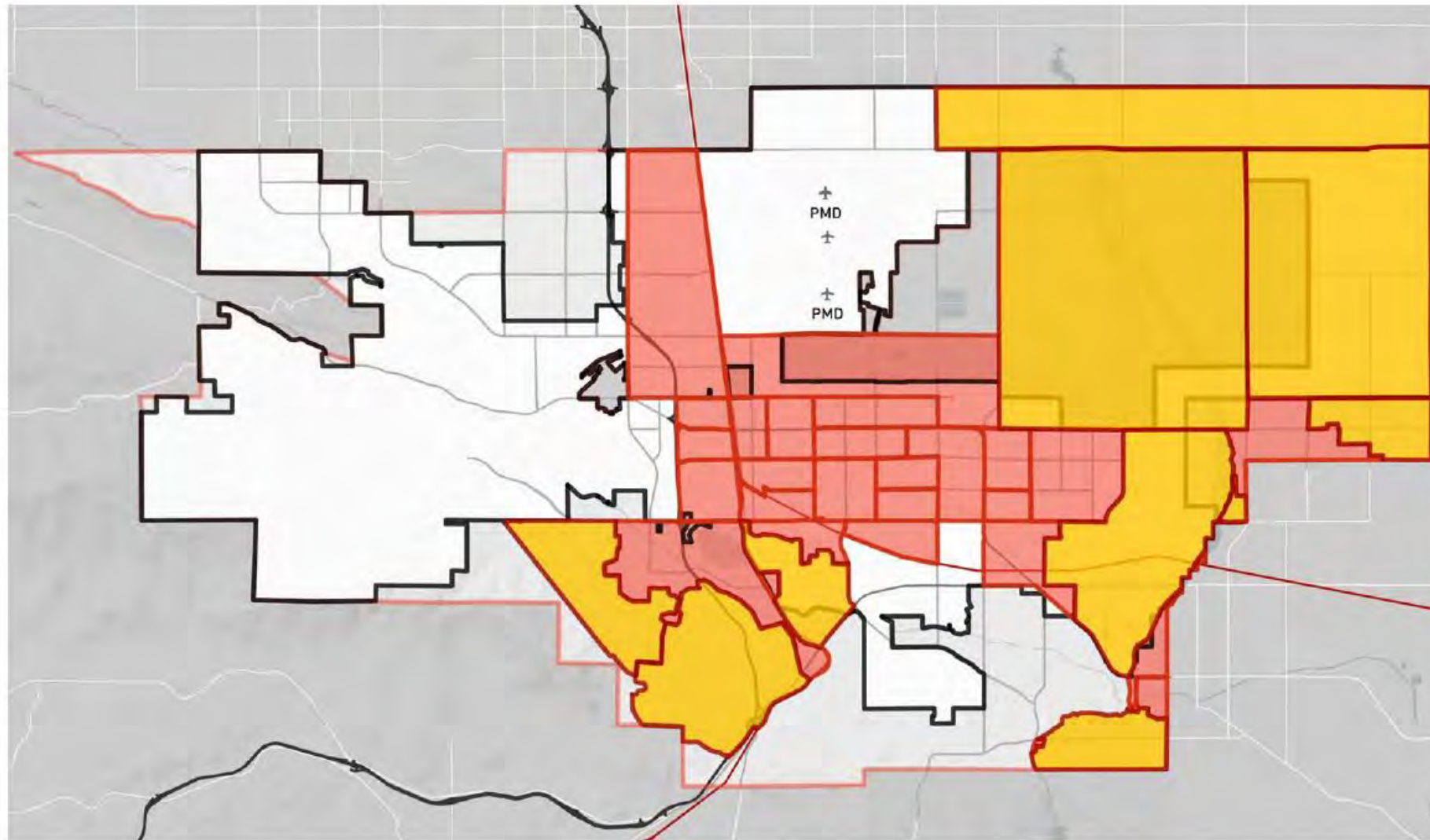
Healthy Community Assessments



Census Tracts



Disadvantaged Communities



Legend

- City Limits
- Sphere of Influence
- Railroads
- Freeways/Highways
- Major Streets
- Disadvantaged Communities
- Vacant Areas

Palmdale's Health & Equity Strengths

- Less exposure to most environmental pollution
 - Lower levels of particulate matter (PM2.5)
 - Less toxic releases from polluting facilities
 - Fewer groundwater threats and cleanup sites
- Comparatively affordable housing
 - Housing security
 - Pathway to homeownership
- High-quality STEM jobs
 - Pathway to economic opportunity

Palmdale's Health & Equity Challenges & Threats

- Lower life expectancy compared to Los Angeles County
- 48% of population is under 200% of Federal Poverty Line
- Limited access to healthy food retailers and open spaces
- Antelope Valley has high levels ozone pollution. Annual average exceeds safe levels for vulnerable populations.
- Compared to countywide averages, Palmdale has higher rates of:
 - Asthma
 - Asthma-related emergency department visits
 - Chronic obstructive respiratory disease (COPD)
 - Obesity
 - Coronary heart disease
- Disproportionately higher health impacts in low-income communities and communities of color.

Topics To Be Addressed in the Health and Equity Element

Economic
Opportunity
and Education
Parity

Access to Health
Care

Housing

Obesity

Air Quality and
Respiratory
Health

Food Access

Crime and
Public Safety

Goals Overview

Provide access to affordable and high-quality produce

Promote access to high-quality health care

Encourage construction and maintenance of safe & sanitary housing

Provide range of opportunities to exercise

Improve air quality

Provide high quality and accessible educational opportunities

Improve public safety

Promote access to quality health care

- Create **3 health and wellness districts** in locations well-served by transit
- Encourage a mix of **medical, health, and wellness uses**
- Work with local transit agencies to **ensure bus routes provide service** from disadvantaged communities to health service facilities
- Collaborate with the County of Los Angeles and regional health organizations to **improve access to mental healthcare**, especially in disadvantaged communities
- Develop **programs and services that help reduce stress** and mental health issues, especially for vulnerable populations
- Coordinate with the Los Angeles County Department of Children and Family Services to **support programs for at-risk youth**, foster youth, and parents of at-risk youth

Encourage safe & sanitary housing

- Ensure ongoing and effective **health and safety code enforcement**; prioritize rental properties in disadvantaged communities
- Consider a **housing rehabilitation program** that assists multi-family residential property owners to improve affordable rental housing supply
- In cooperation with Los Angeles County and other regional agencies, establish a **lead removal program** for homes built before 1980
- **Support creativity in the construction of new housing** by proactively developing zoning and healthy design guidelines
- Work with developers to prioritize health in planned housing construction, using **healthy design checklists** and/or other review tools

Provide range of opportunities to exercise

- **Increase access to parks** and open spaces in park-poor neighborhoods.
- **Provide new trails systems**, especially in disadvantaged communities, that connect to the regional trail system
- Prioritize **investments in recreational programs** that focus on physical activity
- Develop an **agreement with local school districts** to allow City residents access to outdoor recreational areas during non-school hours
- **Prioritize transportation system improvements** that encourage walking, biking, and transit use **in disadvantaged communities**
- **Enhance existing streetscapes** to include greater sidewalk coverage, walkway connectivity, street crossing safety features, traffic calming measures, and other design elements

Improve air quality

- **Plant street trees**, especially in disadvantaged communities
- **Transition City's vehicle fleet** to lower-emission fuel technologies
- Designate **truck routes to avoid sensitive land uses**, where feasible
- Partner with CalTrans to study the potential to **re-route Palmdale Boulevard truck traffic** to Pearblossom Highway
- Avoid siting sensitive uses (schools, childcare centers, senior housing, and affordable housing) near **land uses that produce localized air pollution**
- Develop a **citywide air quality monitoring program** to identify areas with high gas and oil emissions, in addition to tracking changes over time, identifying polluters, and analyzing potential interventions

Provide access to affordable and high-quality produce

- Attract one (or more) **weekly Certified Farmers Markets** to Palmdale
- Utilize economic development incentives to **encourage stores to sell fresh, healthy foods** such as produce in disadvantaged communities.
- **Limit fast food and liquor stores** in neighborhoods with a significant concentration of stores near child-sensitive areas, such as schools, parks, and childcare facilities.
- **Strengthen the local economy** by encouraging local food production, community gardens, and farmers markets on vacant or underutilized parcels
- Improve ready access to **healthy food retailers along key transit corridors** and within transit-oriented developments
- Work with local transit agencies to **ensure that bus routes provide service** from disadvantaged communities to healthy food retailers

The image features a dark teal overlay on a landscape background. The background shows a paved road leading towards a row of houses with gabled roofs, surrounded by trees and shrubs. The word "Questions?" is written in a large, white, sans-serif font in the center of the image. Below the text is a short, white horizontal line.

Questions?



**City of Santa Ana
General Plan Update
Environmental Justice
Collaboration**

December 9, 2021



Timeline of Events



- October PC & CC Work Program Overview
- November Kick Off Meeting & 1-on-1 City Council Member Meetings
- December Community Meetings

- January - March Community Meetings
- April - June CC 1-on-1 Interviews
- April - September Youth Outreach
- October CC Outreach Update

- February - November 14 General Plan Advisory Group (GPAG) Meetings

- February GPAG Recognition
- June CC Status Update
- July CC Study Session
- August - September Pop-Up Events
- December Policy Framework

- March - May Land Use Online Survey
- April 5 Land Use Community Workshops
- May Chamber of Commerce Meeting
- June PC Study Session

- March EIR Scoping Meeting
- July EJ presentation/video, HRC presentation
- July - August 2 Virtual Community Workshops
- Fall General Plan Public Hearing

- January - March EJ Roundtable
- March - May EJ Survey / EJ Virtual Forums
- August Draft PEIR / GP Public Review
- September PEIR Public Hearing
- October PC Public Hearing

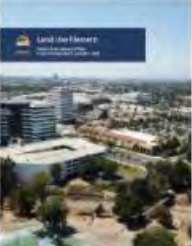




GOLDEN CITY BEYOND: 2045

SANTA ANA GENERAL PLAN

Provides long-term policy direction to guide the physical development, quality of life, economic health, and sustainability of our Santa Ana community





Volume 3 – Built Environment

 Land Use Element >	 Historic Preservation Element >	 Urban Design Element >
---	---	--

Volume 1 – Services and Infrastructure

 Community Element >	 Circulation Element >	 Economic Prosperity Element >	 Public Services Element >
---	--	---	---

Volume 2 – Natural Environment

 Conservation Element >	 Open Space Element >	 Noise Element >	 Safety Element >
--	--	---	--

CULTURE

SUSTAINABILITY

HEALTH

EDUCATION

EQUITY

Pollution Burden

CES Measures 21*
Indicators

Population Characteristics

Exposures

Environmental Effects

Sensitive Populations

Socioeconomic Factors



Ozone



PM2.5



Solid Waste Sites
and Facilities



Cleanup Sites



Diesel Particulate
Matter



Drinking Water
Contaminants



Toxic Releases
from Facilities



Traffic



Pesticide Use



Lead Risk*



Groundwater
Threats



Impaired Water
Bodies



Hazardous Waste
Generators and Facilities



Asthma



Cardiovascular
Disease



Low Birth Weight
Infants



Educational
Attainment



Housing Burdened
Low Income
Households



Linguistic Isolation

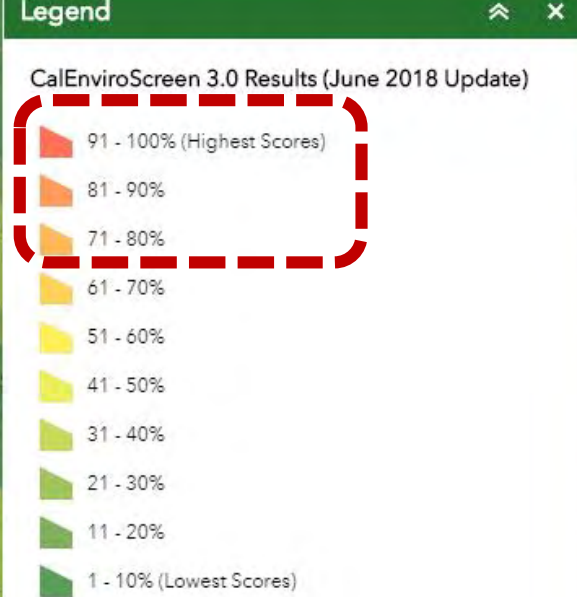
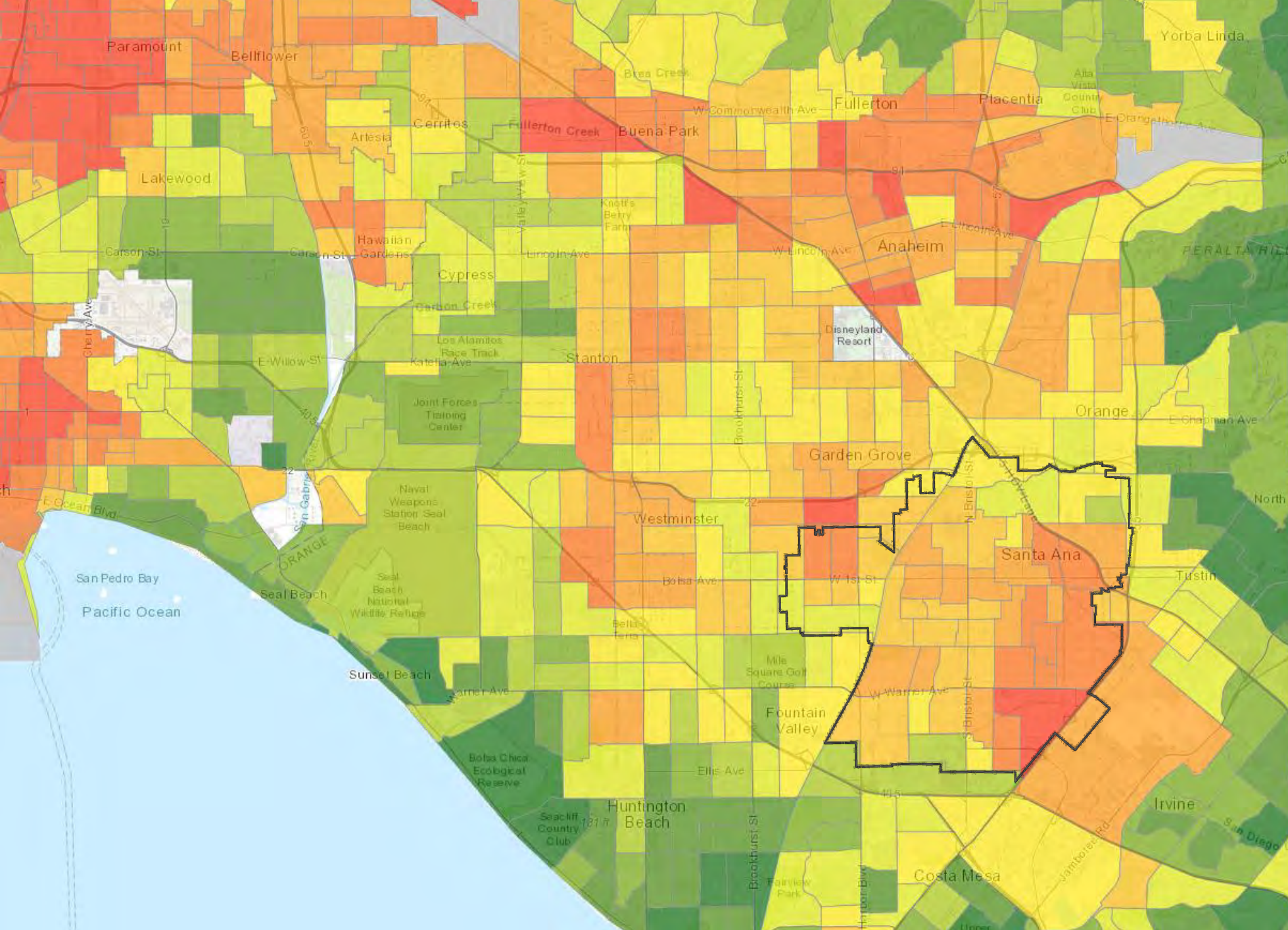


Poverty



Unemployment

* Based on draft CES 4.0 methodology, released February 2021



Combined scores compared to identify lowest to highest burden

Tracts ranked from 75% to 100% are a disadvantaged or EJ community

Note: The City's approach is consistent with CalEPA methodology.

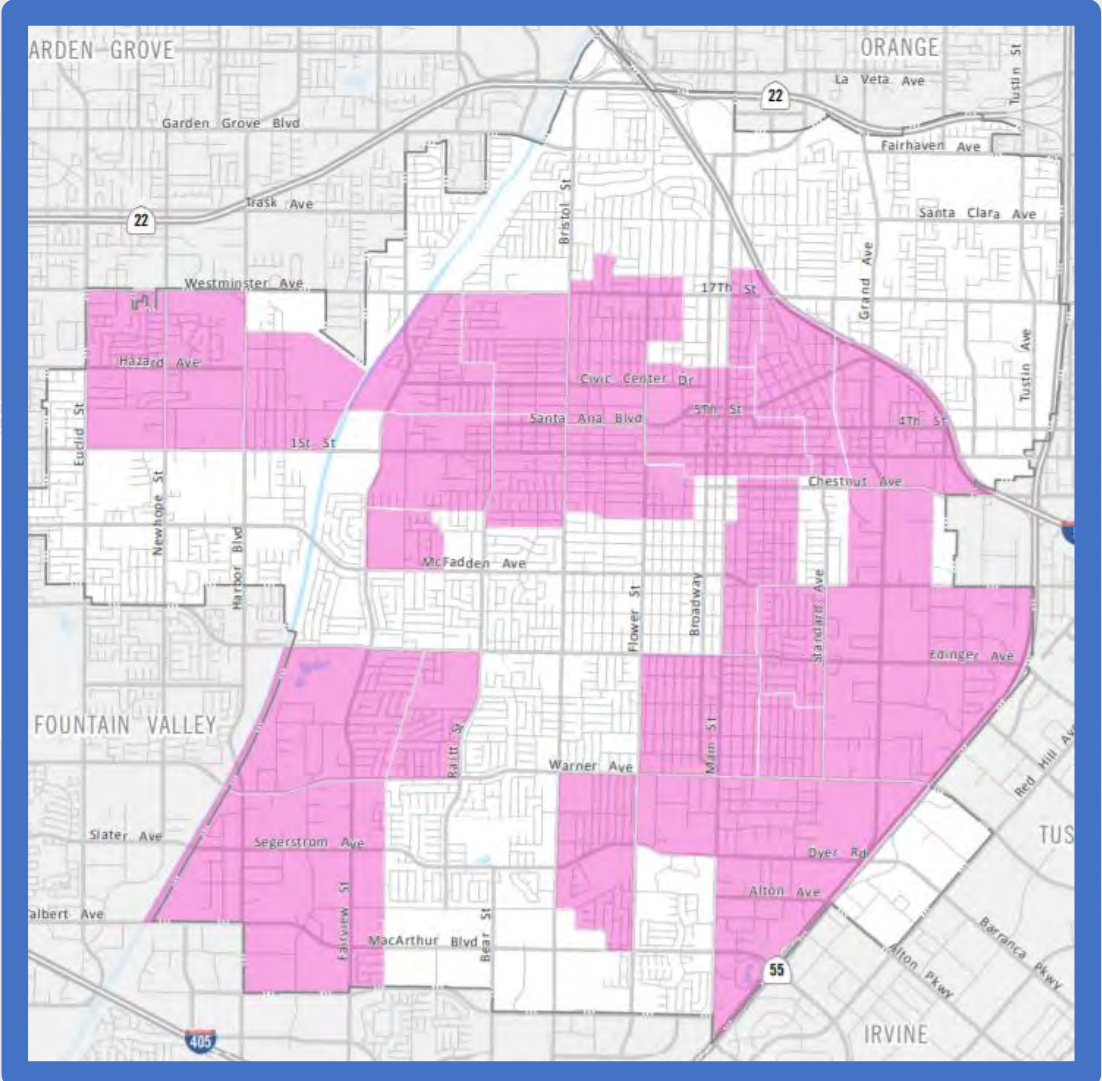


MAKING OF A GENERAL PLAN ENVIRONMENTAL JUSTICE

Environmental Justice in Santa Ana Gen... Watch later Share

Environmental Justice
in the City of Santa Ana General Plan

golden city beyond
A SHARED VISION FOR SANTA ANA



golden city beyond
A SHARED VISION FOR SANTA ANA

ENVIRONMENTAL JUSTICE POLICY FRAMEWORK (DRAFT) FOR THE GENERAL PLAN UPDATE

City of Santa Ana | June 2020



Local air quality

\$185K Community Air Grant
obtained by Madison Park
neighborhood



Community-led air quality
monitoring and increased
awareness of air quality concerns

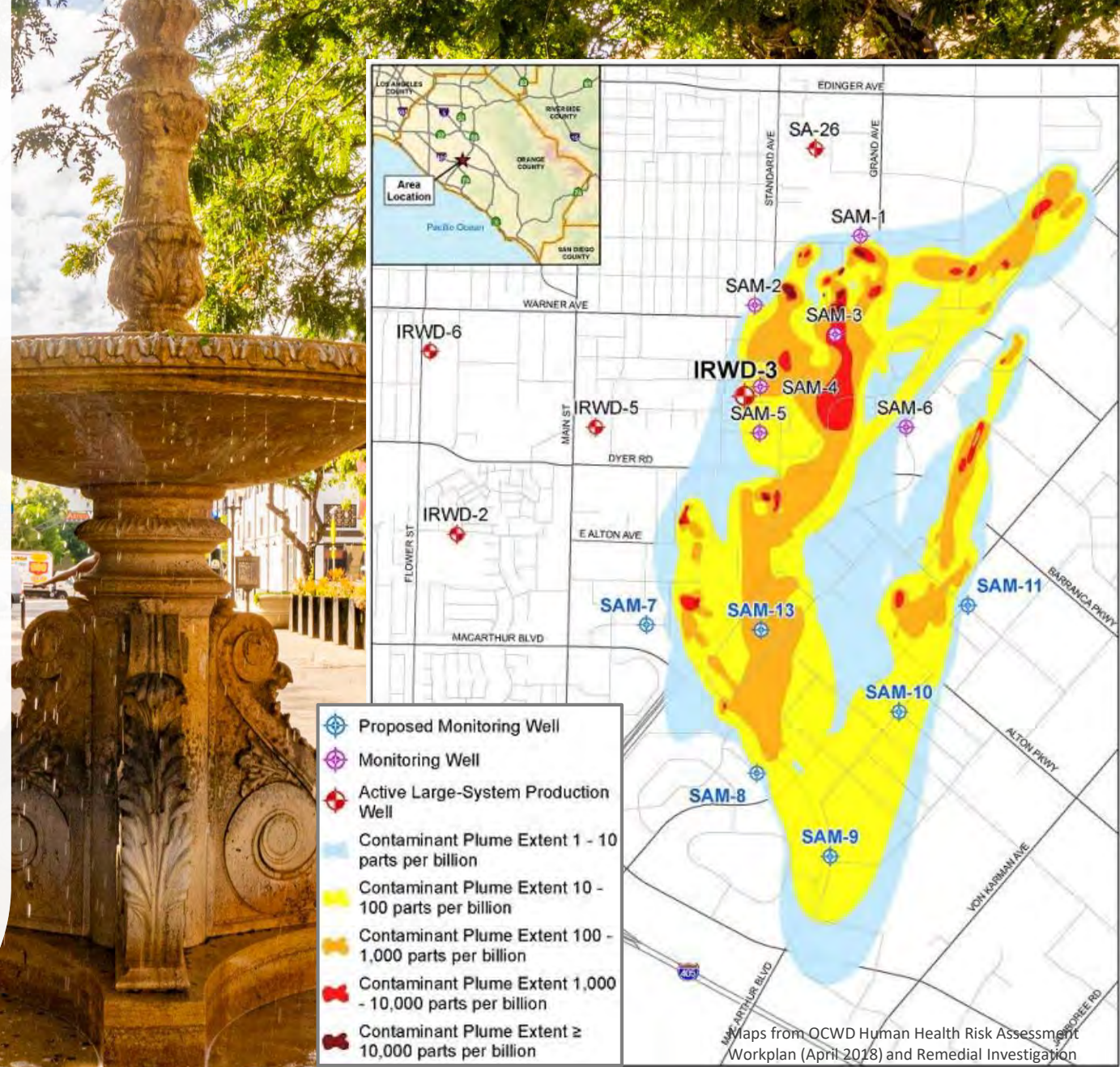


Water quality

Groundwater contamination in industrial area of southeast Santa Ana

Increase reliance on more costly imported water

Multi-agency effort to fix contamination issues



Maps from OCWD Human Health Risk Assessment Workplan (April 2018) and Remedial Investigation Workplan (June 2018)

Lead contamination

Potential contaminant in our soil and water

No known safe level of lead exposure

Local soils testing since 2016





ENVIRONMENTAL JUSTICE OUTREACH CAMPAIGN

SANTA ANA GENERAL PLAN UPDATE

- January through May 2021
- Collaborative Outreach
- 10 Virtual Community Forums
- 236 Participants
- Multilingual Survey & Forums
- In-Person Open House – August 2021





EJ SURVEY RESULTS

SANTA ANA GENERAL PLAN UPDATE

First Choice

Additional **public parks, open space, and community centers** in walking distance from my home, school, or business.

Second Choice

More information regarding the conditions in my neighborhood that may be affecting my health (location of industrial sources of pollution, lead contaminated soil, upcoming health fairs, etc.).

Third Choice

Removal of heavy industrial uses near my home, schools and local parks.

Fourth Choice

Informational workshops for residential tenants and landlords regarding tenant protections, wrongful evictions, and property maintenance requirements.

Fifth Choice

Educational programs regarding lead paint and soil contamination focusing on residents in EJ areas.



ENVIRONMENTAL JUSTICE IN THE SANTA ANA GENERAL PLAN

What we heard...
... and policy actions for positive change

<https://www.santa-ana.org/general-plan/draft-documents>



Reducing exposure to pollution

POTENTIAL ACTION

Establish an Ad Hoc Committee of community stakeholders to guide preparation of an ongoing **EJ Community Engagement Program**. Host biannual or quarterly Roundtable meetings with local stakeholders to guide and evaluate implementation of environmental justice policies.





Reducing exposure to pollution

POTENTIAL ACTION

Work with community organizations and regional partners to understand the prevalence, sources, and implications of lead contamination across Santa Ana's soil. Collaborate with EJ stakeholders in proposing **solutions to remove hazardous lead soils** in the city and benchmarks to measure effectiveness of programs.

Safety Element AI 2.4



A clear view of the mountains over Santa Ana
Photo courtesy of Lisandro Orozco



Increasing physical activity

POTENTIAL POLICY
Complete and regularly update citywide **Parks and Recreation Master Plan** to identify strategies to provide additional parks, recreational facilities and activities.



Open Space Element 1.1





Creating safe and sanitary housing



POTENTIAL ACTION

Collaborate with residents and industry stakeholders to create an **incentive and amortization program** to relocate existing heavy industrial uses adjacent to sensitive uses.



Land Use Element AI 3.3



Creating safe and sanitary housing



POTENTIAL ACTION

Promote *first priority to Santa Ana residents and workers* in tenant selection for City funded affordable housing projects or density bonus.



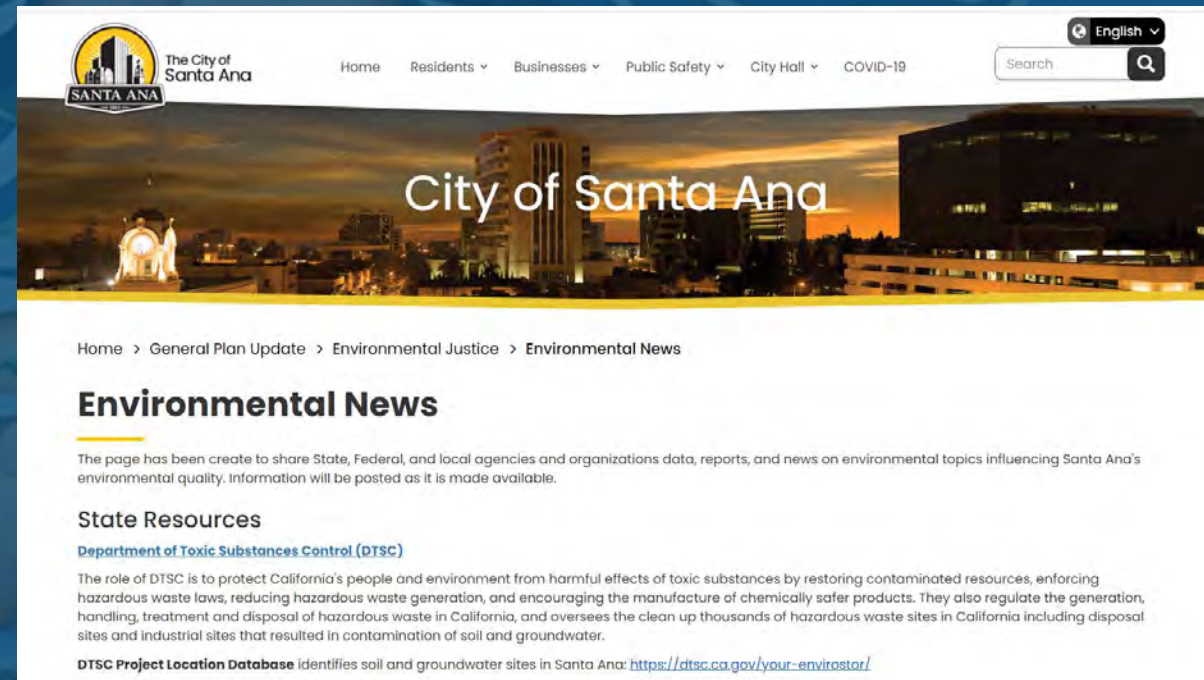
Land Use Element 2.14



DRAFT GENERAL PLAN ACTIONS IN THE SANTA ANA GENERAL PLAN

Community Engagement Actions:

- **Interagency Team.** Establish an Environmental Quality Interagency Team to monitor and make recommendations on hazard issues. Share information portal on the City's webpage. (*Conservation Element 1.10*)



CULTURE

SUSTAINABILITY

HEALTH

EDUCATION

EQUITY



DRAFT GENERAL PLAN ACTIONS IN THE SANTA ANA GENERAL PLAN

Air Quality & Water Hazards Actions:

- **Standards.** Update the zoning code and evaluate buffer requirements between polluting industrial uses and sensitive uses like residences and schools. *(Land Use Element Action 3.2)*





DRAFT GENERAL PLAN ACTIONS

IN THE SANTA ANA GENERAL PLAN

Housing and Anti Displacement Actions:

- **Strategies.** Collaborate with community organizations and residents to identify, evaluate, and implement anti-displacement strategies to address the unintended displacement of vulnerable tenants and property owners due to the introduction of new development.
(Land Use Element 2.11)





GOLDEN CITY BEYOND: 2045

SANTA ANA GENERAL PLAN

⋮



Melanie McCann, Principal Planner
Ricardo Soto, Senior Planner



www.santa-ana.org/general-plan



newgeneralplan@santa-ana.org



(714) 667-2781

Update: Racial Equity Baseline Conditions

Equity Working Group

December 9, 2021

www.scag.ca.gov





What's your experience?

01

Do you have your own **equity indicators** in your jurisdiction?

02

Have you considered **developing your own** Baseline Conditions report or Equity Index?

03

How often do you **consult indices** or indicators in your work?

Researching & Understanding Our Baseline

- Analysis of existing disparities and inequities
- Indicators across four main categories:
 - Economic Vitality
 - Healthy and Complete Communities
 - Mobility
 - Environment
- Informed Racial Equity Early Action Plan & future work



Selecting the Initial Indicators

26

Equity Indicators

categorized by
Key Themes

Key Themes

Economic Vitality

Healthy + Complete Communities

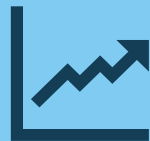
Mobility

Environment

Selection Criteria



Alignment



Consistency



Trusted



Regularity



Disaggregated

Equity Indicators – March 2021



Economic Vitality

Economic Vitality

- \$15 / Hour
- Median Hourly Wage
- Poverty
- Working Poor
- Unemployment

Connectedness

- High Poverty Neighborhoods

Healthy + Complete Communities

Affordability

- Home Ownership
- Housing Burden

Housing Quality

- Kitchen Facilities
- Overcrowding

Essential Services

- Plumbing Facilities
- Broadband Access

Public Health

- Health Insurance
- SNAP
- Life Expectancy

Household

- Median Household Income

Mobility

Accessibility

- Access to Employment
- Access to Open Space & Parks
- Commute Time
- Households without a vehicle
- Transportation System Share

Safety

- Bike + Pedestrian Collisions

Environment

Climate Vulnerability

- Flood Hazard areas
- Wildfire risk

Environmental Health

- CalEnviroScreen3.0*

Public Health

- Air pollution index

**Omitted in first draft*



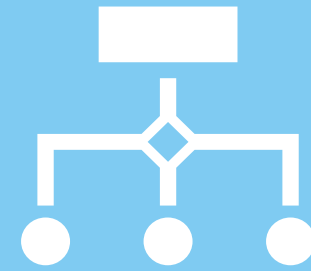
Defining indicators

- Race/ethnicity categories
- Climate vulnerability
- Access to parks, employment, shopping



Data feasibility or availability

- Income inequality, Business ownership
- Chronic disease rates, hospitalizations
- Access to grocery stores



Disaggregated data

- Race/ethnicity
- Disadvantaged factors
- Geographic scale

Proposed Equity Indicators – 2022



Economic Vitality

Connectedness

- Neighborhood Poverty*

Economic Vitality

- ~~\$15 / Hour~~
- Median Hourly Wage
- Median Household Income*
- Poverty
- Unemployment
- Working Poor

Opportunity

- Educational Attainment

Healthy + Complete Communities

Affordability

- ~~Median Household Income~~
- Home Ownership
- Housing Burden
- Median Rent

Housing Quality

- Housing Quality*
- Overcrowding

Essential Services

- Broadband Access

Public Health

- Health Insurance
- ~~SNAP~~
- ~~Life Expectancy~~

Mobility

Accessibility

- Access to Employment
- Access to Open Space & Parks
- Access to Transit
- Active Commuting
- Commute Time
- Households without a Vehicle
- Transportation System Share

Safety

- Pedestrian & Bicyclist Collisions*

Environment

Air Quality

- Air Pollution Index

Climate Vulnerability

- Extreme Heat
- Flood Hazard areas
- Substandard Housing
- Wildfire Risk

Environmental Health

- CalEnviroScreen4.0*
- Tree Canopy

*Updated, renamed, or moved topic areas

A photograph of a worker wearing a white long-sleeved shirt, a brown apron, and a clear face shield. The worker is looking down at a counter, possibly preparing food or a drink. The background is softly lit and out of focus, showing what appears to be a kitchen or service area.

Economic Vitality

- Educational Attainment **NEW!**
- Median Hourly Wage
- Median Household Income*
- Neighborhood Poverty
- Poverty
- Unemployment
- Working poor
- ~~\$15 / hour~~

**Updated, renamed, or moved topic areas*



Healthy & Complete Communities

- Broadband Access
- Health Insurance
- Homeownership
- Housing Burden
- Housing Quality*
- ~~Life Expectancy~~
- Median Rent **NEW!**
- ~~SNAP~~

**Updated, renamed, or moved topic areas*

Mobility

- Access to Employment
- Access to Open Space and Parks
- Access to Transit **NEW!**
- Active Commuting **NEW!**
- Bicyclist and Pedestrian Collisions
- Commute Time
- Households without a Vehicle
- Transportation System Share

**Updated, renamed, or moved topic areas*



Environment

- Air pollution Index
- CalEnviroScreen 4.0*
- Extreme Heat **NEW!**
- Flood Hazard Areas
- Substandard Housing **NEW!**
- Tree Canopy **NEW!**
- Wildfire Risk

**Updated, renamed, or moved topic areas*



Discussion Questions

01

What is your **vision** for an equitable region?

02

Which indicators or topic areas are **missing** from this proposed list?

03

Which indicators might be **helpful** for your community?

04

Which indicators might be **less helpful** or **unnecessary**?

Proposed Equity Indicators – 2022



Economic Vitality

Connectedness

- Neighborhood Poverty*

Economic Vitality

- ~~\$15 / Hour~~
- Median Hourly Wage
- Median Household Income*
- Poverty
- Unemployment
- Working Poor

Opportunity

- Educational Attainment

Healthy + Complete Communities

Affordability

- ~~Median Household Income~~
- Home Ownership
- Housing Burden
- Median Rent

Housing Quality

- Housing Quality*
- Overcrowding

Essential Services

- Broadband Access

Public Health

- Health Insurance
- ~~SNAP~~
- ~~Life Expectancy~~

Mobility

Accessibility

- Access to Employment
- Access to Open Space & Parks
- Access to Transit
- Active Commuting
- Commute Time
- Households without a Vehicle
- Transportation System Share

Safety

- Pedestrian & Bicyclist Collisions*

Environment

Air Quality

- Air Pollution Index

Climate Vulnerability

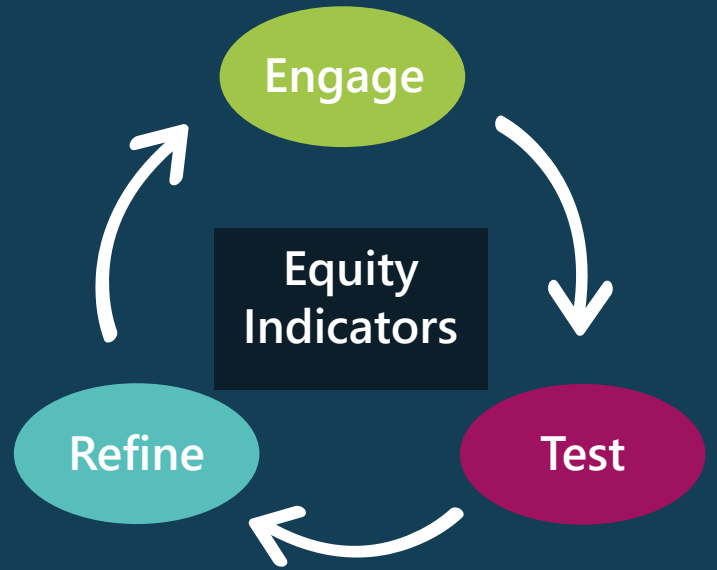
- Extreme Heat
- Flood Hazard areas
- Substandard Housing
- Wildfire Risk

Environmental Health

- CalEnviroScreen4.0*
- Tree Canopy

*Updated, renamed, or moved topic areas

Looking Forward



National Equity Atlas

<p>INDICATOR</p> <p>Wages: \$15/hr</p>		<p>INDICATOR</p> <p>Wages: Median</p>	
<p>INDICATOR</p> <p>Working poor</p>		<p>INDICATOR</p> <p>Unemployment</p>	
<p>INDICATOR</p> <p>Income inequality</p>		<p>INDICATOR</p> <p>Homeownership</p>	

National Equity Atlas

Thank you

Questions?

Courtney Aguirre | aguirre@scag.ca.gov

<https://scag.ca.gov/our-work-inclusion-diversity-equity-and-awareness>

www.scag.ca.gov



Southern California Goods Movement Communities Freight Impact Assessment

Project Introduction

Alison Linder, PhD

Senior Regional Planner

11/4/2021

www.scag.ca.gov



Challenges

- Air Quality
- Public Health
- Quality of Life
- Lack of Access to Economic Opportunities
- Disproportionate Impacts on disadvantaged communities
- Potential lack of representation in traditional outreach methods



Goals and Objectives

- Engage the populations of identified communities to understand their views related to goods movement challenges and opportunities.
 - Identify burdens related to air quality, traffic, and lack of employment
 - Identify economic opportunities and how to connect to them
- Prepare, execute, and evaluate an innovative communication approach
- Prepare a toolkit of strategies
- Build relationships with disadvantaged, freight impacted and frequently underrepresented communities.

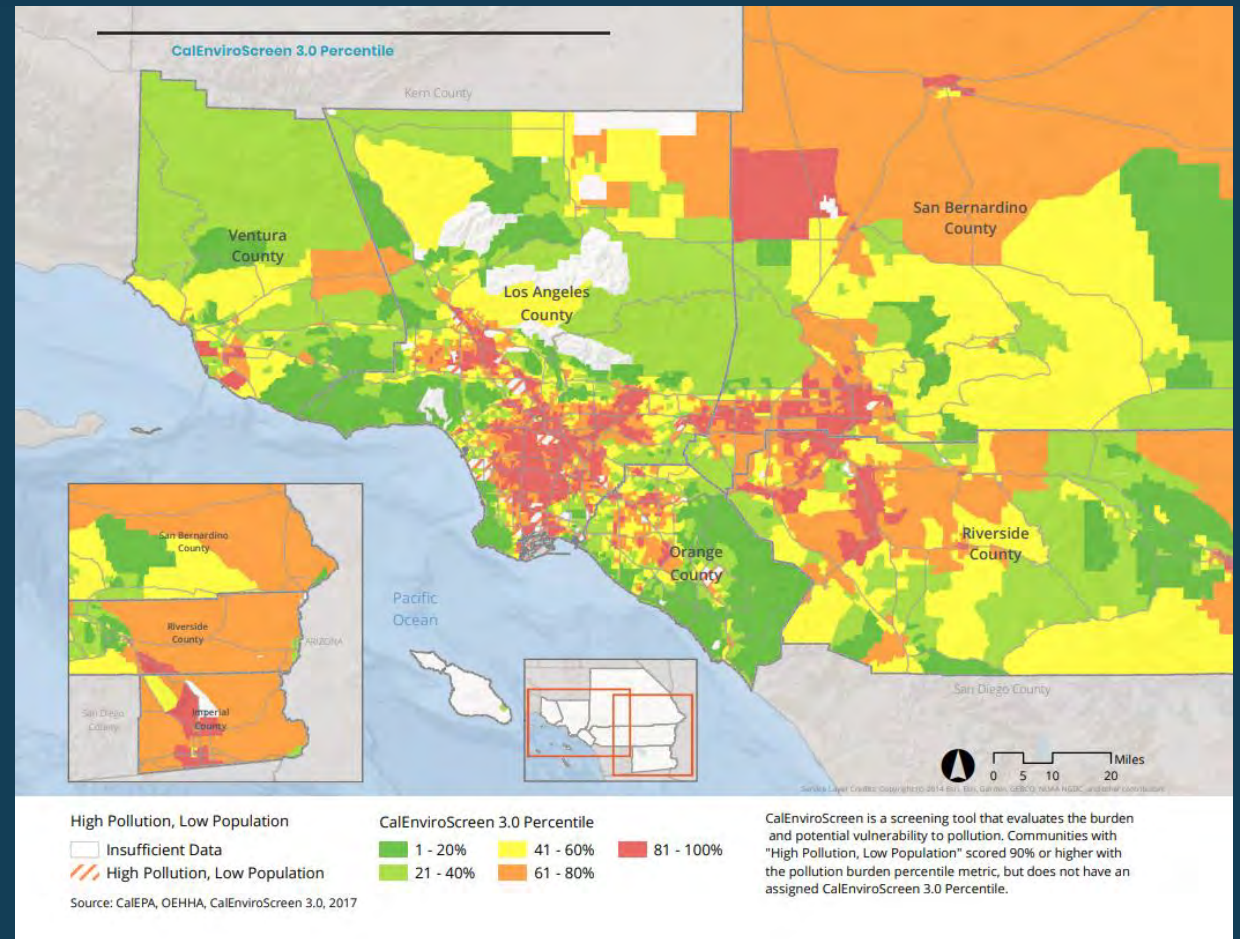
Connection to SCAG work on Equity

- SCAG’s Early Action Plan for Equity
- Public Participation Plan
- Equity Tool and Planning Strategy
- AB 617 Communities Outreach
- Connect SoCal EJ Technical Report
- Equity Working Group
- Inclusive Economic Recovery Strategy



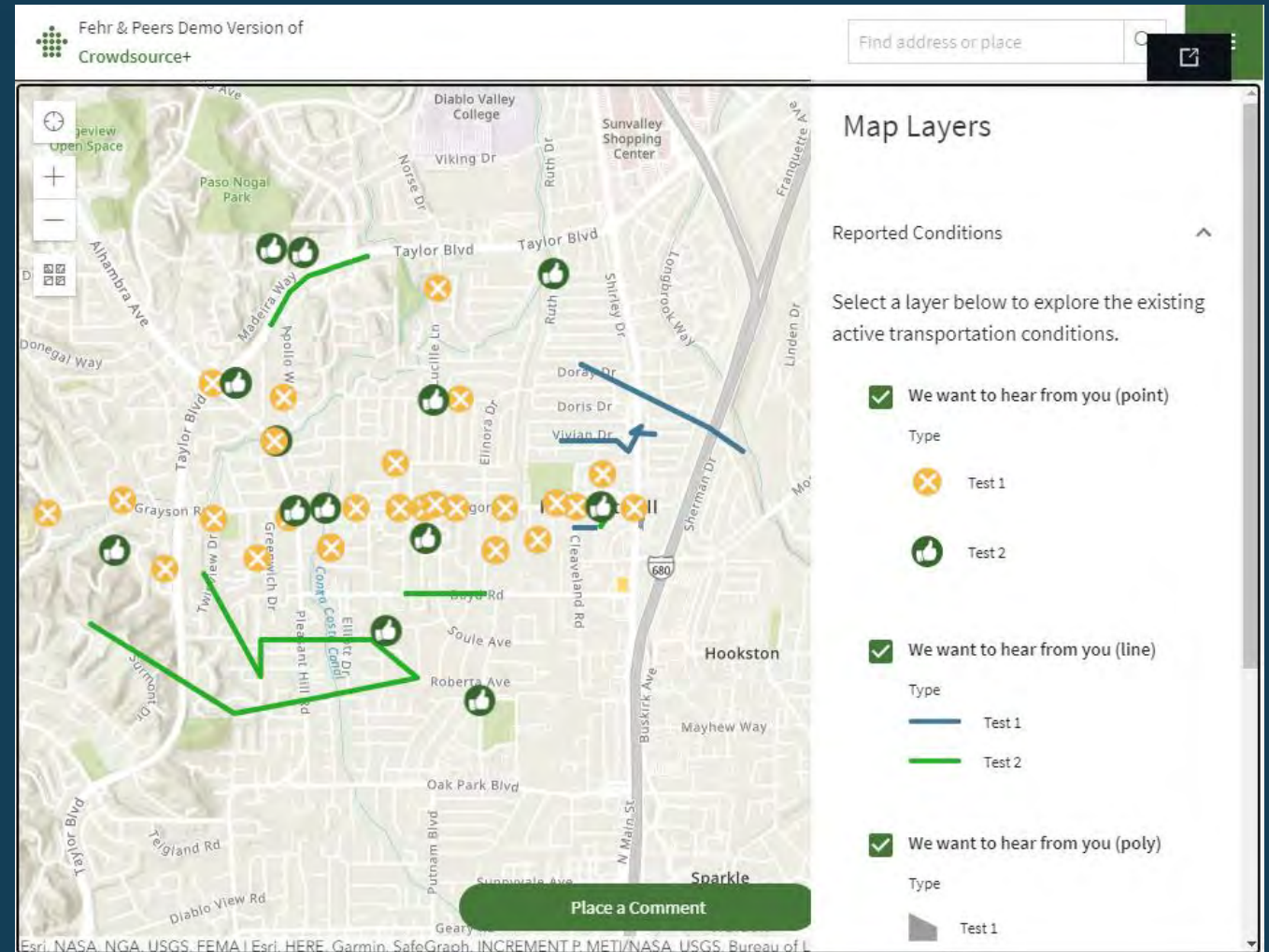
Study Approach and Deliverables: Community Identification

- Identify 6–8 communities that:
 - Are quantifiably disproportionately affected by goods movement activities facilities and/or activities
 - Satisfy generally accepted criteria for a disadvantaged community
 - Represent and reflect various geographic areas, causes, and intensities
- Key Indicators include:
 - Economic Opportunities
 - Access to Transportation
 - Pending Developments
 - Zoning and Land use
 - Access to Education
 - Community Demographics
 - Public Health Indicators



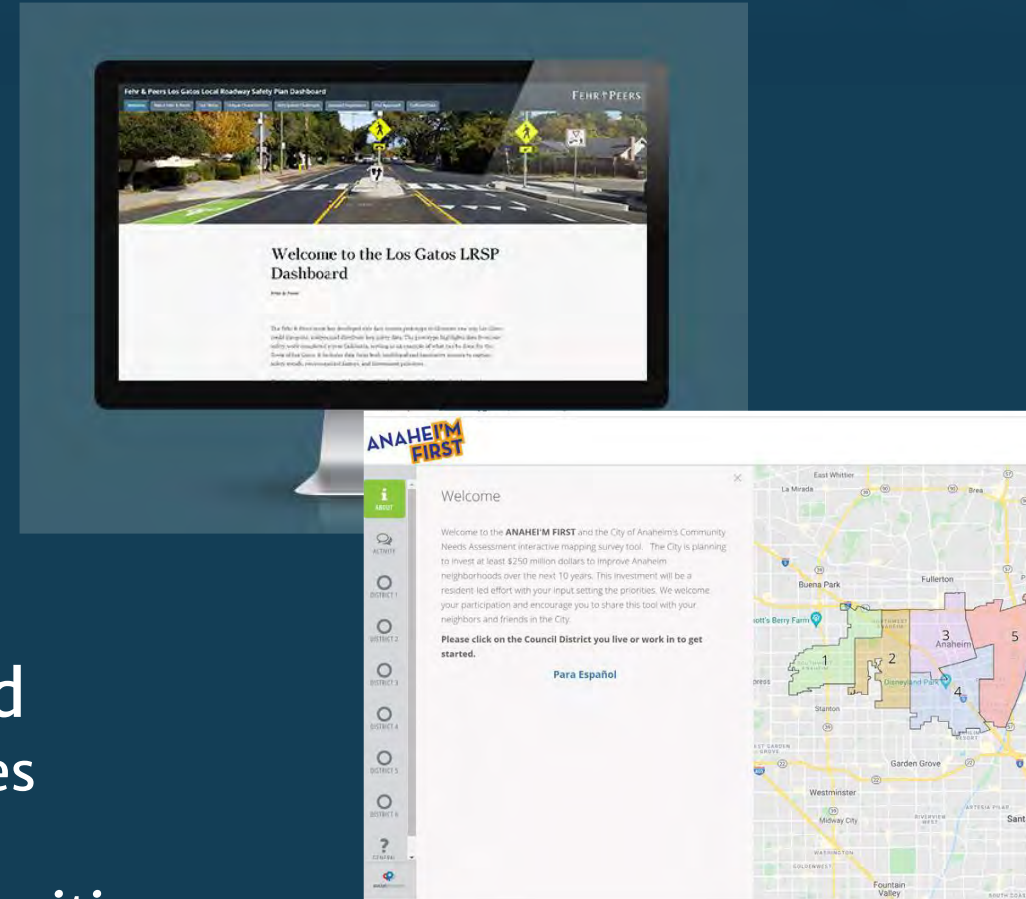
Study Approach and Deliverables: Innovative Outreach

- Workshops
- Focus Groups
- Survey Using Fehr & Peers Crowdsource+ Tool
- Three 5 Minute Educational Videos
- TikTok Challenge
- Involvement of SCAG Equity Working Group
- Community Advisory Committee (CAC)
- CBO engagement



Study Approach and Deliverables: Toolkit Development

- Tools used to create Toolkit
 - CrowdSource ++
 - ESRI Story Map
 - Report
- Toolkit targeted to 3 different audiences
 - Community specific
 - Regional wide
 - SCAG and other agencies
- Tools and strategies shall be focused around
 - communication and engagement best practices
 - health and air quality improvement
 - workforce development and economic opportunities
- Shared with identified communities and housed on SCAG website



Expected Outcomes

- Improved approach to outreach with goods movement impacted communities
- Identification and evaluation of innovative outreach tools
- Improved understanding of challenges faced by goods movement impacted communities and how they are perceived
- Locally generated solutions and best practices to address goods movement challenges

Ultimately, community empowerment to address goods movement challenges and benefit from economic opportunities



Next Steps

- Kick-off Workshop
 - Save the date! 11:00AM–1:00PM on Jan 18th
 - Will kick off project, and discuss community selection process.
- We welcome your feedback as the project moves forward



Everything you buy touches a truck at some point!

Questions?

Alison Linder, PhD
linder@scag.ca.gov

www.scag.ca.gov



Announcements



Toolbox Tuesday Training – January 25, 2022 at 1-2:30pm

Interested in attending? Interested in previous Toolbox Tuesday trainings? Contact Anikka Van Eyl (vaneyl@scag.ca.gov) or Anita Au (au@scag.ca.gov)

CalEnviroScreen 4.0 Released – October 2021

Updated data for all indicators, improvements on some calculations, and a new indicator (Children's Lead Risk from Housing)

Visit:

<https://oehha.ca.gov/calenviroscreen/report/calenviroscreen-40>

Announcements



SoCal Goods Movement Virtual Workshop – January 18, 2022 at 11:00AM–1:00PM

Project kick-off and a discussion of the community selection process.
Contact Alison Linder (linder@scag.ca.gov)

Draft 2022 Public Participation Plan Opens for Public Comment

Full draft available on SCAG's [website](#). Comments may be sent to the Public Participation Plan team (update@scag.ca.gov) by December 31, 2021 at 5:00 p.m.

Thank you!
See you in March 2022!

Courtney Aguirre (aguirre@scag.ca.gov)

Anita Au (au@scag.ca.gov)

www.scag.ca.gov

