

Service Layer Credits: Copyright(c) 2014 Esri, Esri, Garmin, GEBCO, NOAA NGDC, and other contributors

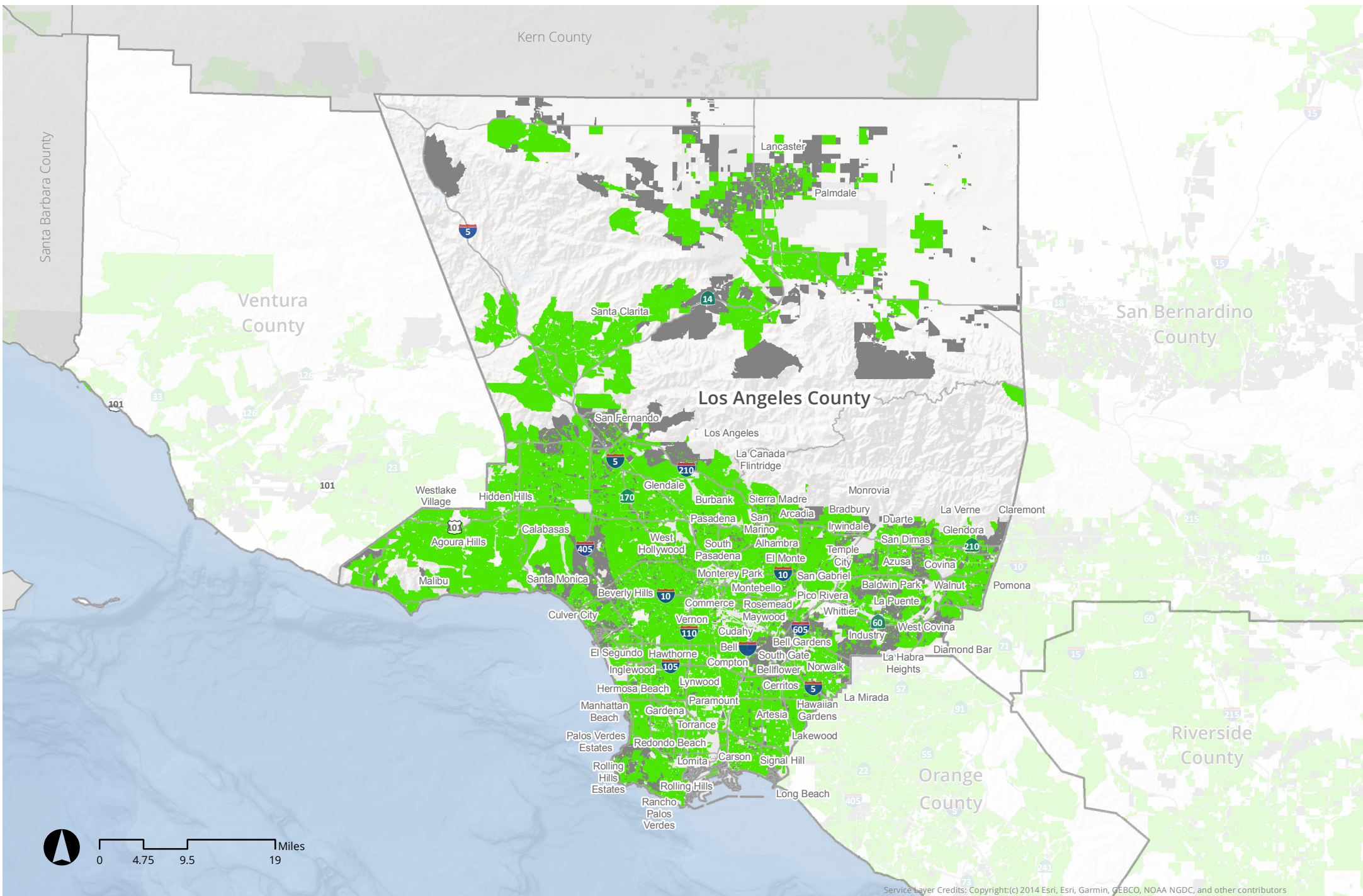
- Meets Federal Threshold
- Below Federal Threshold

## Fixed Broadband by Census Block for Imperial County



Note: The broadband layer represents the California Public Utilities Commission's (CPUC) State Broadband consumer wireline and/or fixed wireless (fixed) broadband deployment. Federal threshold is 25Mbps download speed/3Mbps upload speed

Source: California Public Utilities Commission (CPUC) 2020



Service Layer Credits: Copyright(c) 2014 Esri, Esri, Garmin, GEBCO, NOAA NGDC, and other contributors

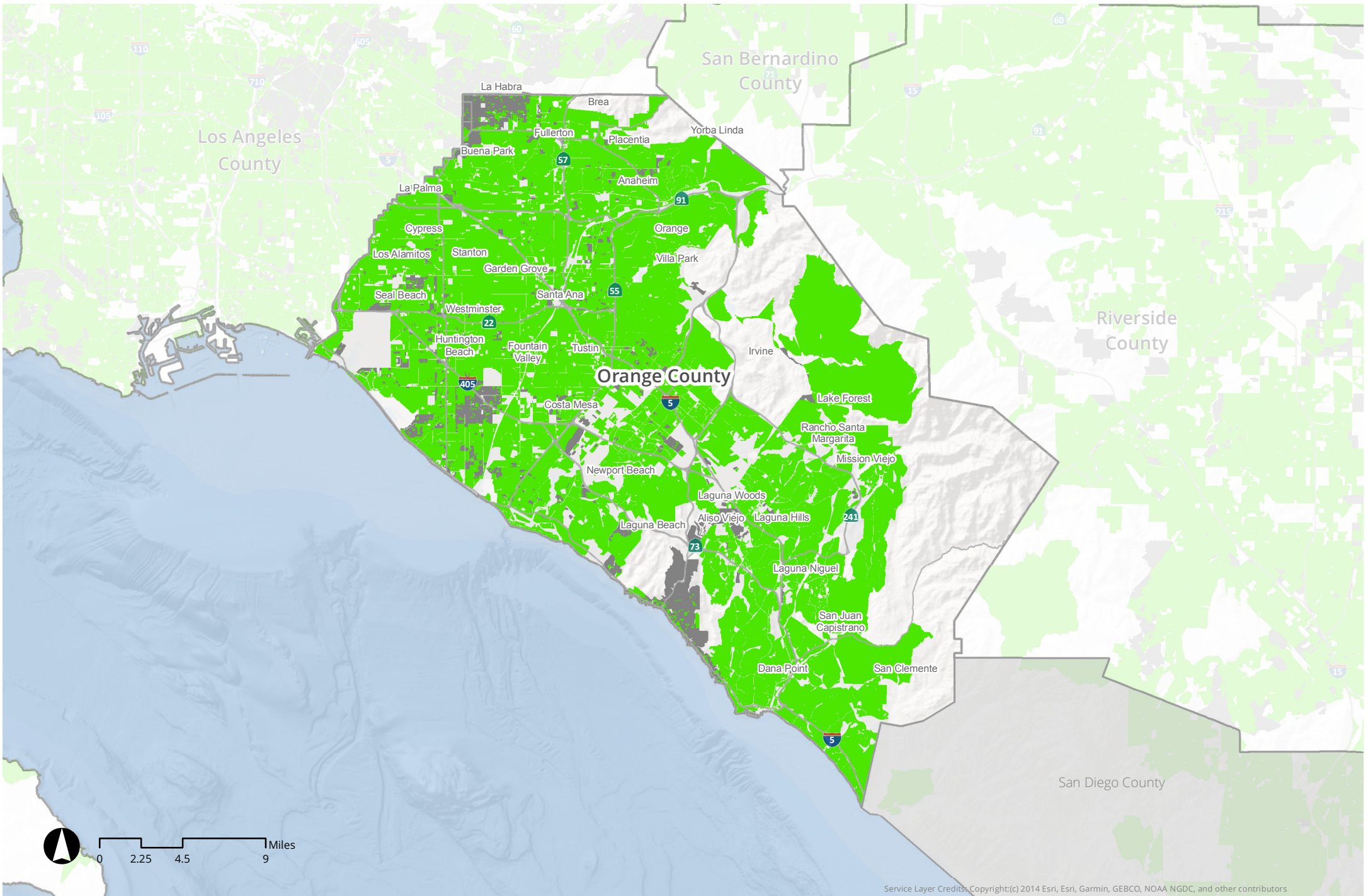
- Meets Federal Threshold
- Below Federal Threshold

## Fixed Broadband by Census Block for Los Angeles County



Note: The broadband layer represents the California Public Utilities Commission's (CPUC) State Broadband consumer wireline and/or fixed wireless (fixed) broadband deployment. Federal threshold is 25Mbps download speed/3Mbps upload speed

Source: California Public Utilities Commission (CPUC) 2020



Service Layer Credits Copyright(c) 2014 Esri, Esri, Garmin, GEBCO, NOAA NGDC, and other contributors

- Meets Federal Threshold
- Below Federal Threshold

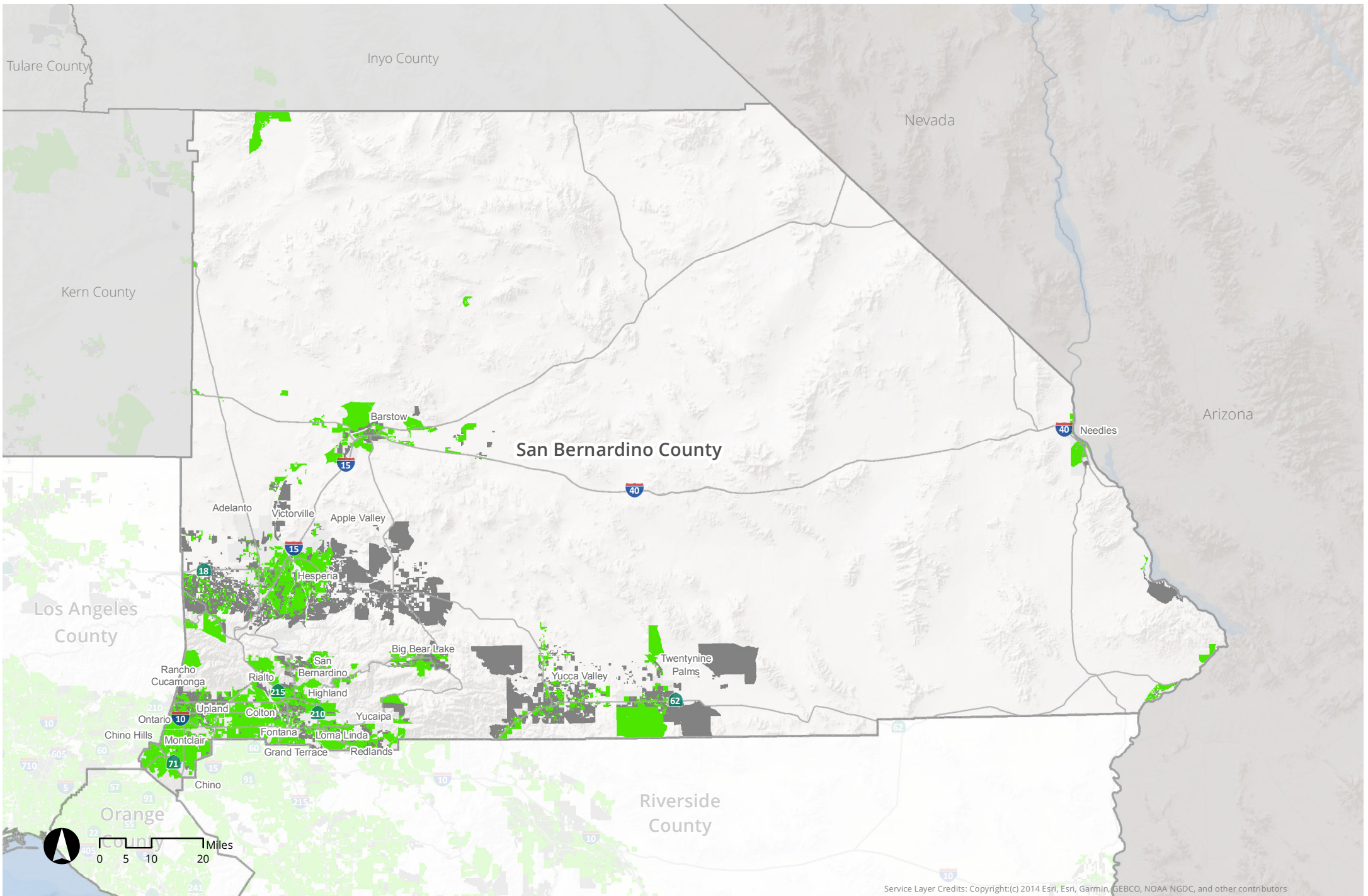
## Fixed Broadband by Census Block for Orange County



Note: The broadband layer represents the California Public Utilities Commission's (CPUC) State Broadband consumer wireline and/or fixed wireless (fixed) broadband deployment. Federal threshold is 25Mbps download speed/3Mbps upload speed

Source: California Public Utilities Commission (CPUC) 2020





Service Layer Credits: Copyright(c) 2014 Esri, Esri, Garmin, GEBCO, NOAA NGDC, and other contributors

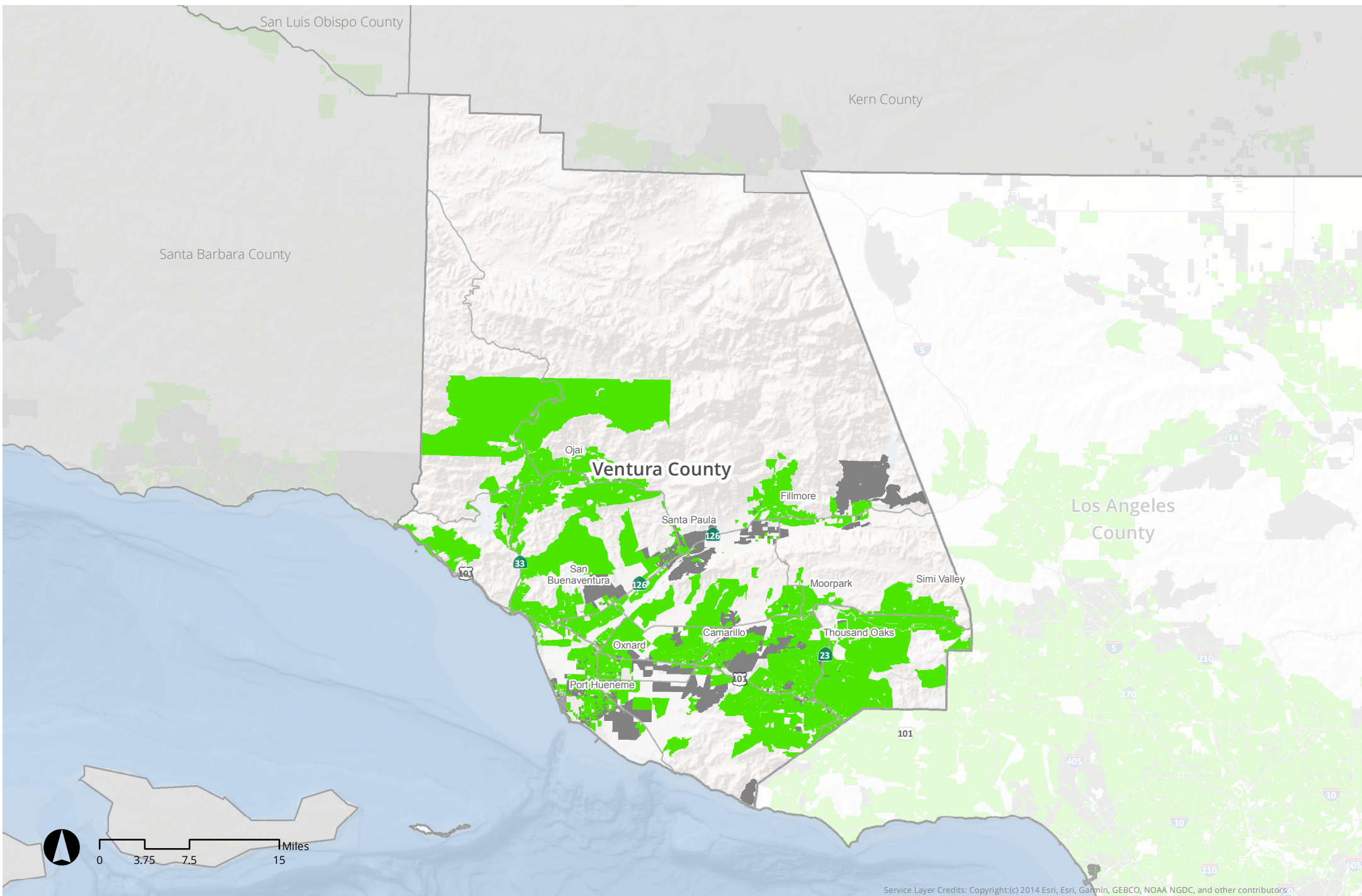
- Meets Federal Threshold
- Below Federal Threshold

## Fixed Broadband by Census Block for San Bernardino County



Note: The broadband layer represents the California Public Utilities Commission's (CPUC) State Broadband consumer wireline and/or fixed wireless (fixed) broadband deployment. Federal threshold is 25Mbps download speed/3Mbps upload speed

Source: California Public Utilities Commission (CPUC) 2020



- Meets Federal Threshold
- Below Federal Threshold

## Fixed Broadband by Census Block for Ventura County



Note: The broadband layer represents the California Public Utilities Commission's (CPUC) State Broadband consumer wireline and/or fixed wireless (fixed) broadband deployment. Federal threshold is 25Mbps download speed/3Mbps upload speed

Source: California Public Utilities Commission (CPUC) 2020