

# Update on SCAG Tools Underway

Regional Data Platform (RDP), SoCal Greenprint, Local Information Services Team (LIST)

Javier Aguilar, India Brookover, Kimberly Clark, Caitlin Smith, Abby Ramsden, Tom Vo

SCAG Planning Division, with Esri and The Nature Conservancy

April 29, 2021

[www.scag.ca.gov](http://www.scag.ca.gov)



## Guiding Themes & Goals



- Pursue resources for planning and implementation of open data, big data, and new technology initiatives (*Future Communities Framework Strategy 4*)
- Promote data-driven decision making, government transparency, and data as a public engagement tool to accelerate progress toward achieving regional planning goals (*Future Communities Framework Policy 1*)
- Increase the availability of civic data and information to reduce costs and increase the efficiency of public services (*Future Communities Framework Policy 2*)

## Presentation Outline

- 1) Regional Data Platform
- 2) SoCal Greenprint
- 3) Local Information Services Team



3

SCAG  
RDP

Southern California Association of Governments  
Regional Data Platform





# The Region Faces Big Challenges...

## Population Growth

The region will add **4 million** people by 2035

## Transportation

**446 million** miles driven each day

## Housing Crisis

6<sup>th</sup> Cycle RHNA

## Location Efficiency

Transit Oriented Development

Active Transportation

## Climate Change Adaptation

Safety

Air Quality and GHG Targets

Sustainability


COVID-19

Public Health


Inclusive Economic Recovery

## Equity

Environmental Justice



Connect SoCal is the big picture vision for a sustainable Southern California



# Local Jurisdiction General Plans are the individual puzzle pieces that bring Connect SoCal into focus

## Addressing These Challenges...

Requires Planning, Engagement & Data Sharing



- Struggle to update local General Plan
- Need data, tools, resources, and support
- Struggle to do regional forecasting & planning
- Need accurate, complete, and current local data



# A Platform for a Smarter Region

## The SCAG Regional Data Platform

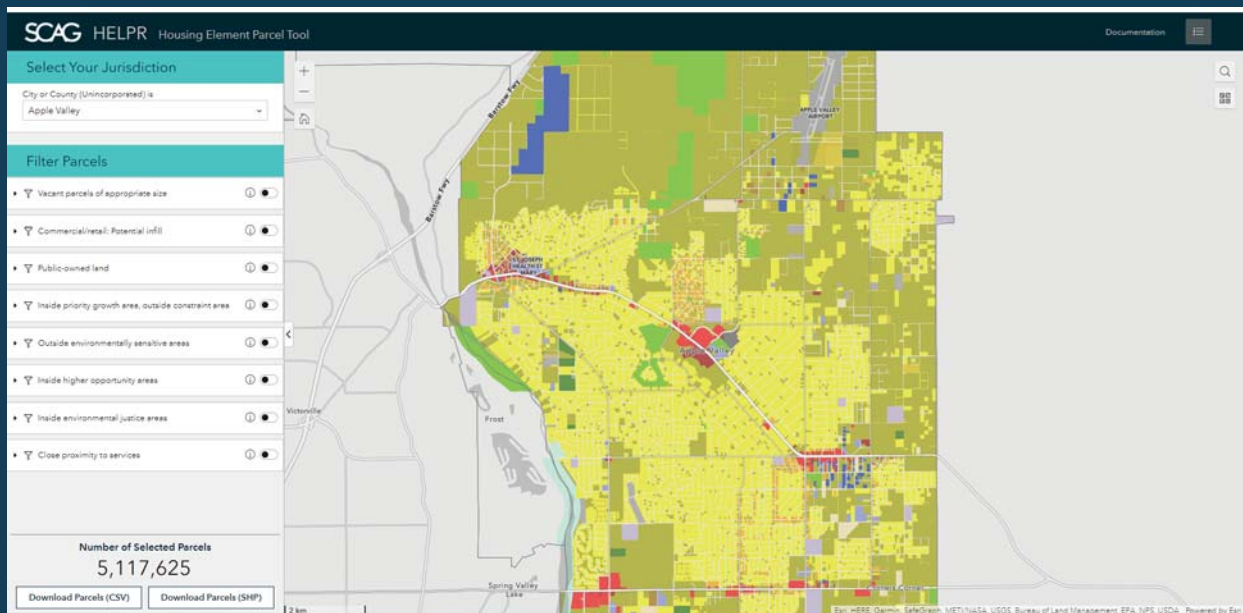
- A robust system of systems for regional data sharing and collaboration
- Facilitates better planning at all levels
- Provides a platform to support a variety of SCAG initiative and programs



Supporting **regionally aware** local planning  
And **locally informed** regional planning

For a more cohesive and sustainable region...

## HELPR Tool



HELPR Tool URL - <https://maps.scag.ca.gov/helpr/>

Recorded Demo - [https://youtu.be/mYDL\\_xKtG-4?t=4195](https://youtu.be/mYDL_xKtG-4?t=4195)

# Selected Parcel Attributes in HELPR

Existing Land Use	Zoning Designation	General Plan Designation	Specific Plan Designation
Assessor: Improvement-to-land value ratio	Parcel size (acres)	Slope	Building footprint area
Brownfield/superfund designation	Priority growth/constraint area	Environmental justice/opportunity areas	Proximity to grocery/healthcare/open space

Photos: CC BY-SA

Attachment: PowerPoint Presentation: Update on SCAG Tools Underway (SCAG Tools Underway - Regional Data Platform, SoCal

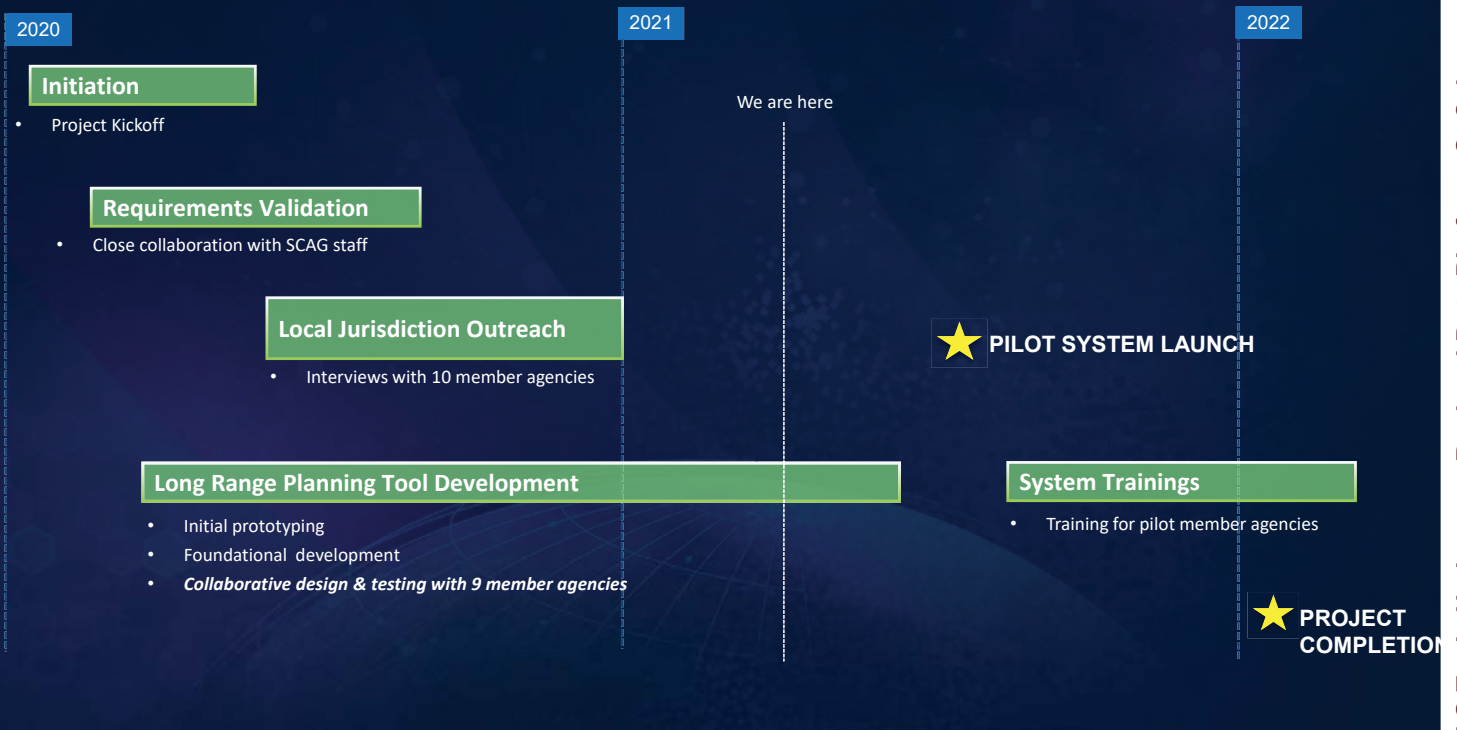
# Selected Environmentally Sensitive Areas

High and Very High Hazard Fire Risk Zones	Liquefaction Susceptibility Zones	Alquist-Priolo Earthquake Fault Zones	100 Year Floodplains
Active River Areas	Wetland Areas	Sea Level Rise Areas	Landslide Hazard Zones
Protected Areas	Wildlife Habitat, Connectivity Areas, and Missing Linkages	Natural Community & Habitat Conservation Plans Reserve Designs	Status and Locations of Rare Plants and Animals

Photos: CC BY-SA



# Regional Data Platform Pilot Project Schedule



## Presentation Outline

- 1) Regional Data Platform (RDP)
- 2) SoCal Greenprint
- 3) Local Information Services Team (LIST)



## Goal of the SoCal Greenprint

To protect, restore, and enhance natural lands, public greenspace, working lands, and water resources and the benefits they provide to people and nature throughout the SCAG region

1

Attachment: PowerPoint Presentation: Update on SCAG Tools Underway (SCAG Tools Underway - Regional Data Platform, SoCal

## Key Users of the SoCal Greenprint



Infrastructure Agencies



Conservation Practitioners



Community-Based Organizations



Developers

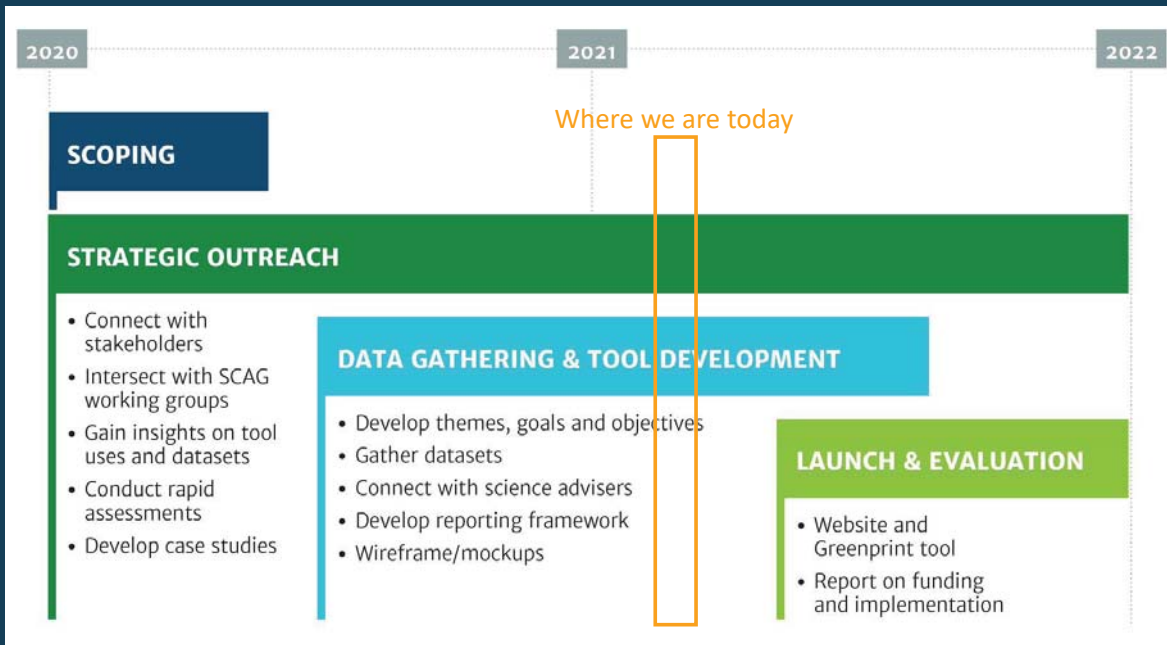


Planners  
(Town, City, County, Triba

1



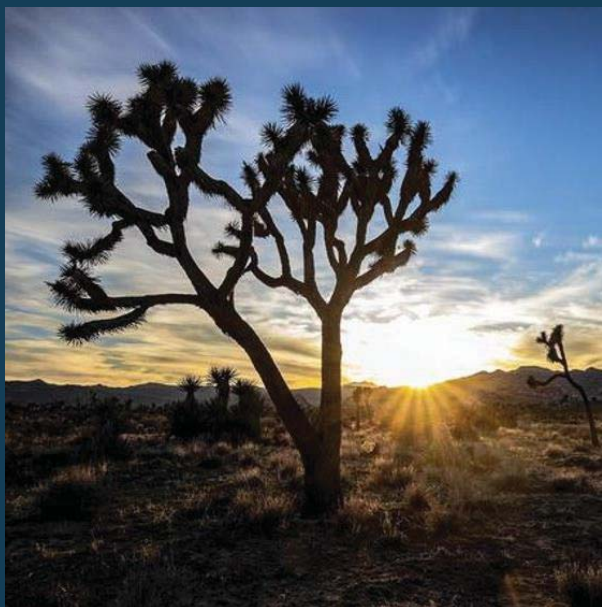
# Milestones



1

Attachment: PowerPoint Presentation: Update on SCAG Tools Underway (SCAG Tools Underway - Regional Data Platform, SoCal

# Outreach Activities - Overview

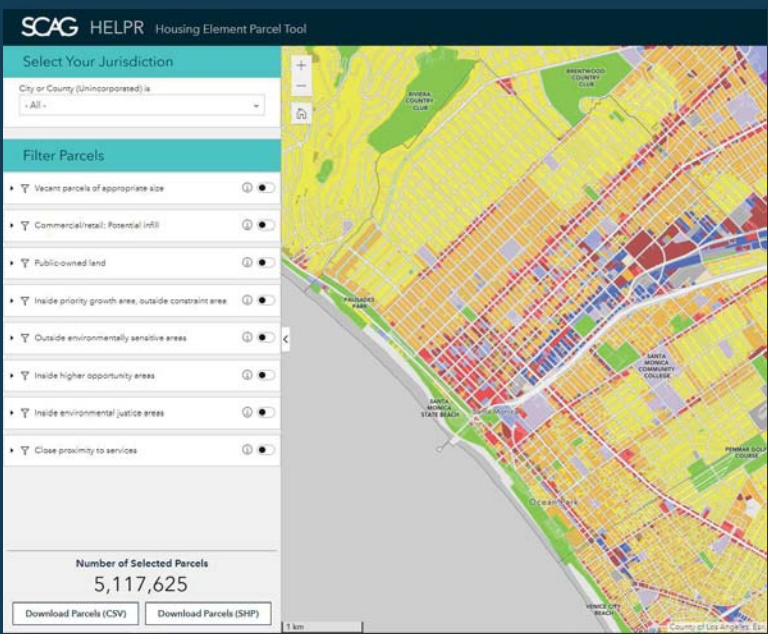


- Steering committee includes outside experts
- Engagement with over 60 advisors at 4 interactive workshops
  - Multiple sectors and diverse geographies
  - Public agencies and municipalities
  - Building and development community
- Ongoing conversations and small working groups
- 8 Rapid assessment interviews
- Developed 6 user profiles
- Pre-launch testing
- Case studies

# Outreach Activities – Rapid Assessments

Organization Name	Organization Type	Housing-related?	County	Project Specifications	Greenprint Advisor?
Pacoima Beautiful	Community Based Organization	No	Los Angeles	Interest: Identifying opportunities to expand greenspace	No
Riverside Corona Resource Conservation District	Agriculture Governmental Agency	No	Western Riverside and San Bernardino	Interest: Highlighting the co-benefits of protecting agricultural lands.	Yes
Clean Power Alliance	Infrastructure Conservation Organization	No	Ventura	Interest: Understanding the impacts and resources on a proposed project site for renewable energy.	Yes
San Bernardino County Transportation Authority	Transportation Agency	No	San Bernardino	Interest: Identifying the impacts of a potential transportation corridor.	Yes
LA County Planning	Planning Agency	Yes	Los Angeles	Interest: Identifying the environmental resources on a site proposed for housing development.	Yes
Building Industry Association of Southern California	Developer Organization	Yes	Los Angeles	Interest: Understanding the potential opportunities and benefits of a proposed housing development.	Yes
Sierra Club – Santa Clarita Chapter	Conservation Organization	Yes	Los Angeles	Interest: Understanding the environmental impacts of a proposed housing development.	No
Placeworks	Planning Consultant	Yes	San Bernardino	Interest: Understanding how the Greenprint can be used to inform General Plan updates.	No

# Technical Contributions



- SoCal Greenprint Data contributed to the HELPR tool
- Data flow between SoCal Greenprint and other SCAG tools
- Data in the SoCal Greenprint utilizes publicly available resources

## SoCal Greenprint Data Review Process



- 1. Compilation:** TNC Science team compiled lists of publicly-available data and developed metrics for each theme ; used in rapid assessments.
- 2. External Review:** We reached out to advisors who have expertise for each theme and ask them to review the data and metrics and provide feedback.

Rapid assessment interviews with representative projects also provide feedback about data and metrics.

- 3. Internal Review:** TNC Science team is reviewing data recommendations and will make final decisions about what to include/exclude.

## Data Inventory – Agriculture Example



GIS Data Name	Source Name	Data Layers Used	Metric Type
Farmland Mapping and Monitoring Program 2016	California Department of Conservation	2016 Prime Farmland; 2016 Important Farmland; 2016 Farmland of Statewide Importance; 2016 Farmland of Local Importance; Grazing Land	Tabular: Acres in project area/region
Farmland Mapping and Monitoring Program 1984	California Department of Conservation	1984 Prime Farmland	Descriptive/Graphic: Change in area of prime farmland between 1984 and 2016 (historic trend)
Soil Agricultural Groundwater Banking Index (SAGBI)	California Soil Resource Lab at UC Davis and UC-ANR	Groundwater recharge	Tabular: Acres of soils suitable for groundwater recharge in the project area/region
Crop production	USDA	Agricultural production by CWHR 13 Agriculture Types	Descriptive: Dollar value of crops grown in the project area/region
Projected Change in Climate Water Deficit	USGS-BCM (Flint and Flint)	Climate water deficit	Descriptive: Additional water needed for irrigation under climate change (cross-cutting metric)
CA Storie Index	USDA - Soil Survey Geographic Database	Soil rating	Tabular: Acres of project area with high Storie Index score in project area/region – indicator of soil health
Class 1 and 2 lands that are of high value for food production.	USDA - Soil Survey Geographic Database	Irrigation capability of soil	Tabular: Acres in project area/region
Williamson Act properties	County by county data		Protection metric: Number of properties in the project area or region enrolled in the Williamson Act
Farmland Under Threat	American Farmland Trust		Descriptive: Information about the types of threats to farmland and action-oriented metric about the importance of conserving agricultural lands



## Presentation Outline

- 1) Regional Data Platform (RDP)
- 2) SoCal Greenprint
- 3) Local Information Services Team (LIST)



23

Attachment: PowerPoint Presentation: Update on SCAG Tools Underway (SCAG Tools Underway - Regional Data Platform, SoCal

## Local Information Services Team (LIST) & General Plan Technical Assistance Introduction

- Purpose – Coordinate, plan, and develop a system to (1) link SCAG’s value-added products (e.g. data, applications, etc.) to help address local information needs, (2) deliver technical assistance, and (3) provide local staff an opportunity to offer feedback on how SCAG can improve our products to facilitate better collaboration, regionally and locally
- Currently, LIST is focusing on the General Plan (e.g. housing, safety, and EJ, etc.) technical assistance
  - Prepare a team to provide technical assistance to jurisdictions to use our data, tools, and model policies



2

# Local Information Services Team (LIST) Progress

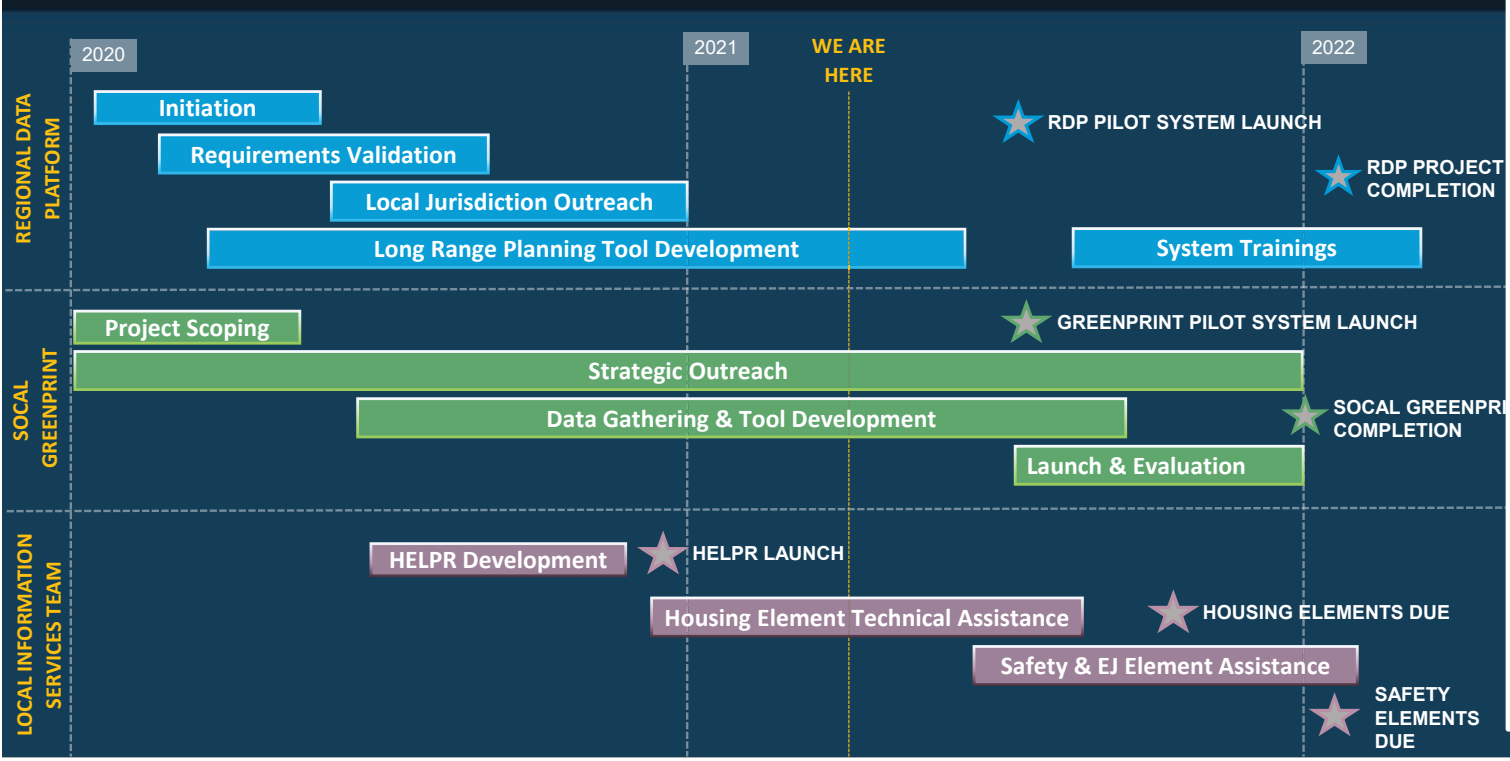


- Since February 2021, the LIST has met one-on-one with nearly 50 jurisdictions
- Hands-on trainings have included demonstrations of the HELPR Tool, and review of SCAG’s Resources for Housing Elements
- Training includes deadlines for updates to Safety Elements and Environmental Justice Elements; additional technical assistance will include a focus on these updates
- One-on-one sessions for Housing Elements will continue through June
- Additional sessions will continue as requested by jurisdictions
- Request technical assistance at [list@scag.ca.gov](mailto:list@scag.ca.gov)



2

# Integrated Project Schedule



Attachment: PowerPoint Presentation: Update on SCAG Tools Underway (SCAG Tools Underway - Regional Data Platform, SoCal

Javier Aguilar – SCAG RDP Project Manager: [aguilar@scag.ca.gov](mailto:aguilar@scag.ca.gov)  
Tom Vo – SCAG RDP Project Manager: [vo@scag.ca.gov](mailto:vo@scag.ca.gov)  
Caitlin Smith – Esri RDP Project Manager: [csmith@esri.com](mailto:csmith@esri.com)  
Witt Mathot – Esri RDP Tech Lead: [wmathot@esri.com](mailto:wmathot@esri.com)

India Brookover – SCAG SoCal Greenprint Project Manager: [brookover@scag.ca.gov](mailto:brookover@scag.ca.gov)  
Kimberly Clark – SCAG SoCal Greenprint & RDP Team: [clark@scag.ca.gov](mailto:clark@scag.ca.gov)  
Abigail Ramsden – The Nature Conservancy Project Manager: [aramsden@TNC.org](mailto:aramsden@TNC.org)

Tom Vo – Local Information Service Team (LIST) Lead: [vo@scag.ca.gov](mailto:vo@scag.ca.gov)  
Kevin Kane – HELPR Tool Lead: [kane@scag.ca.gov](mailto:kane@scag.ca.gov)



Thank you  
for your partnership

## Questions & Discussion

[www.scag.ca.gov](http://www.scag.ca.gov)

