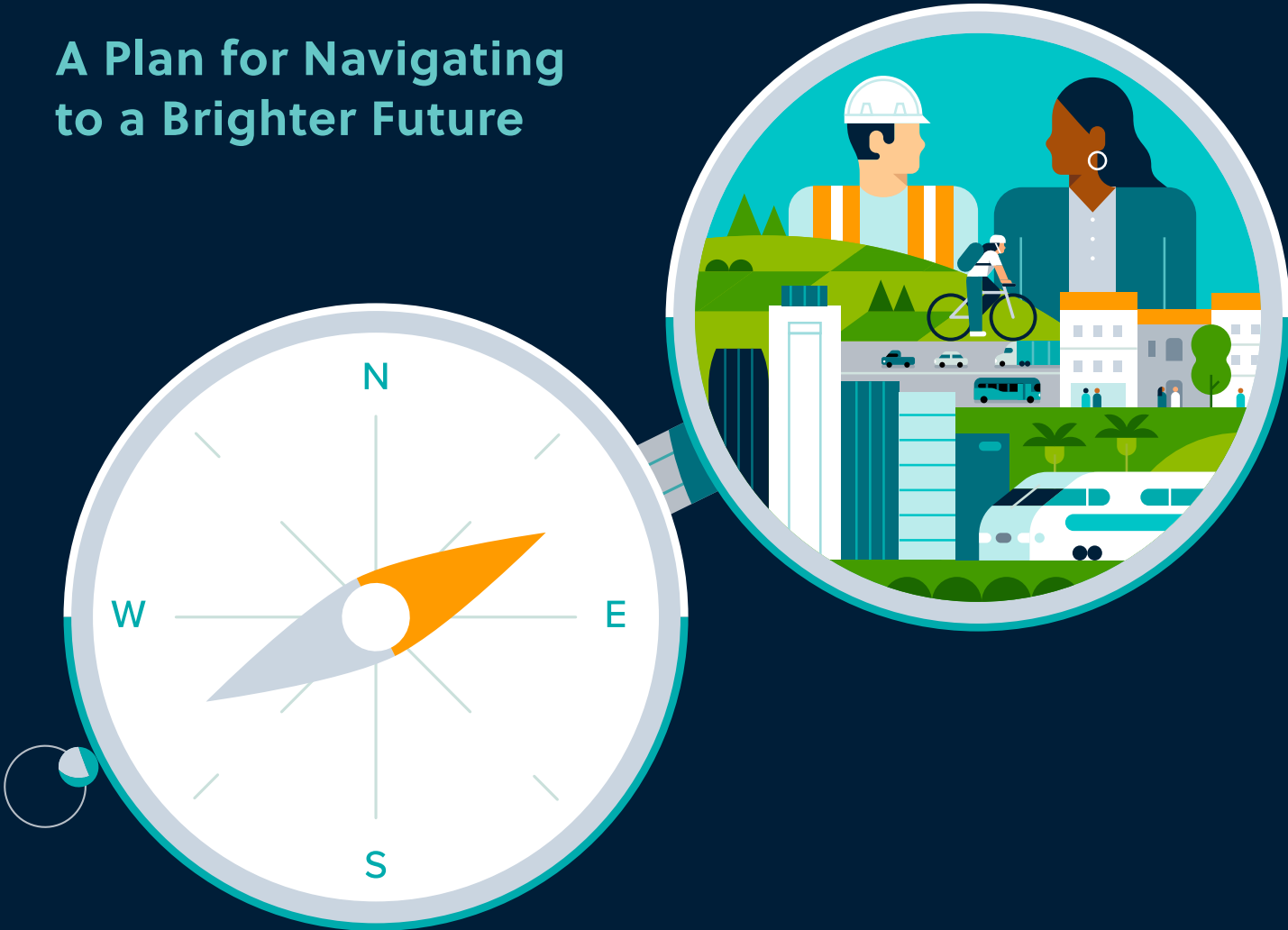


FACT SHEET

Connect SoCal 2024

A Plan for Navigating to a Brighter Future



Review the entire draft
Connect SoCal 2024 plan
at ConnectSoCal.org.



What is Connect SoCal 2024?

Connect SoCal 2024 is Southern California's long-range Regional Transportation Plan and Sustainable Communities Strategy, which outlines a vision for a more resilient and equitable future with policies and strategies for achieving the region's shared goals through 2050.



Plan Elements

Regional Planning Policies

Provide guidance for integrating land use and transportation

Project List

Details plan investments

Forecasted Regional Development Pattern

Demonstrates where the region can sustainably accommodate jobs and needed housing

Regional Strategic Investments

Addresses the gap between local plans and regional performance targets and goals

Implementation Strategies

Guides where SCAG will lead, partner or support plan implementation

Plan Summary

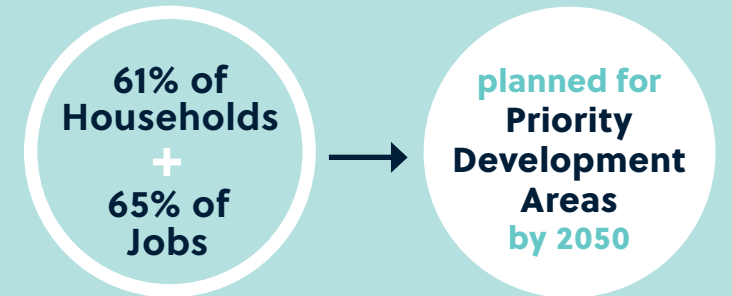
Policy and Strategies

The Plan includes guidance for local agencies and direction for SCAG to achieve a vision of "a healthy, prosperous, accessible and connected region for a more resilient and equitable future" across 22 topic areas, including Complete Streets, Housing the Region, Climate Resilience and Workforce Development.

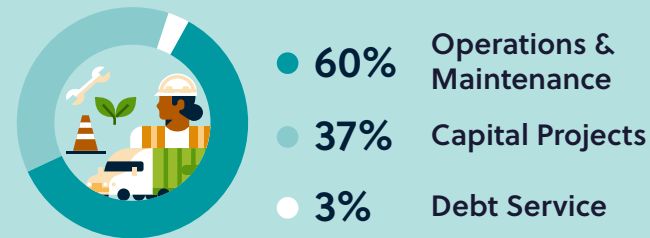
Demographic Forecast



More Efficient Development Pattern



\$750.1 Billion in Investments through 2050



Less Congestion



Reduced GHG Emissions from Passenger Vehicles



More Travel Options



Direct Economic Impacts



Plan Development

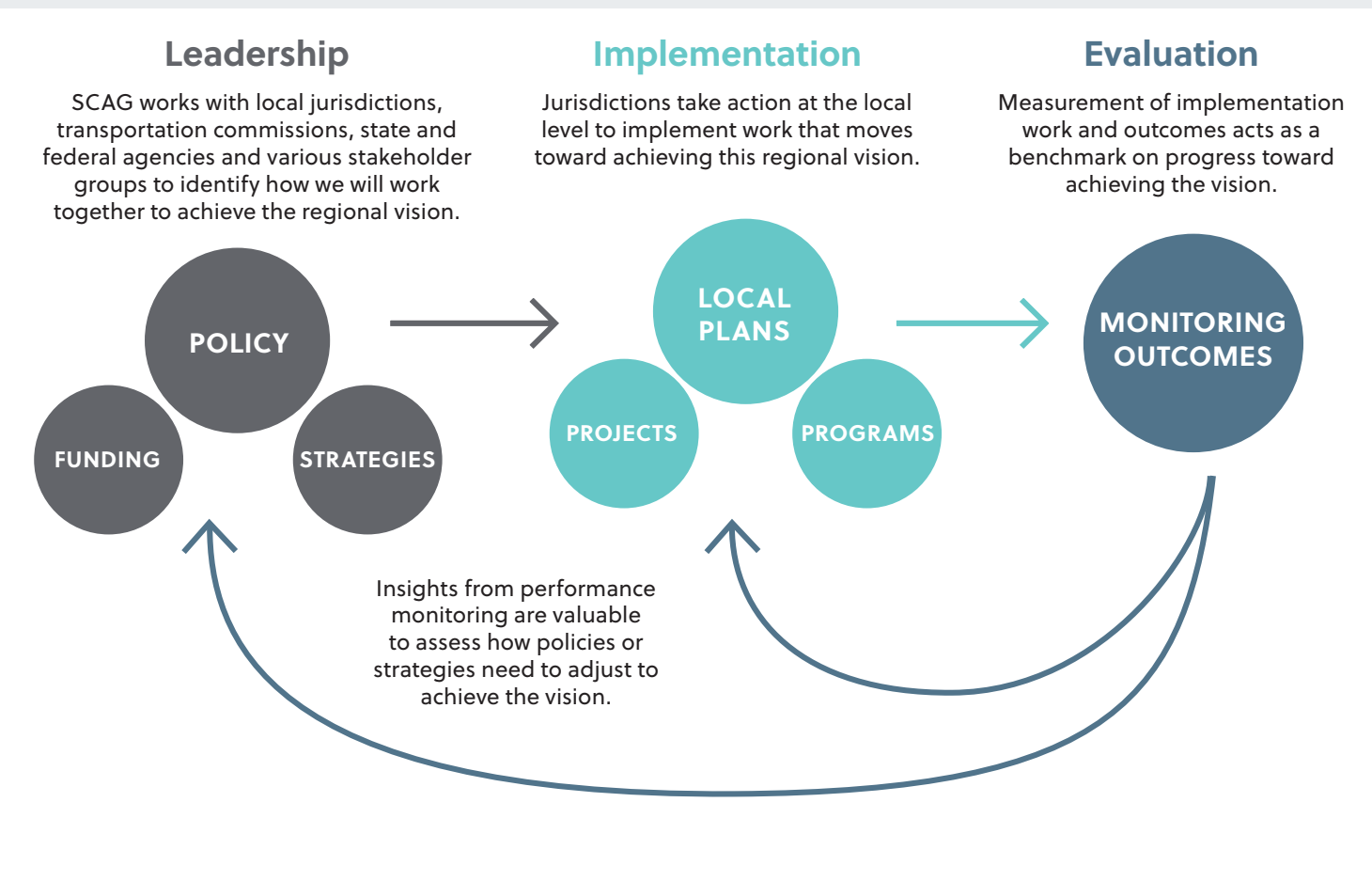
Connect SoCal 2024 was developed through a four-year planning process involving rigorous technical analysis, extensive stakeholder engagement and robust policy discussions with local elected leaders.

- **Project List:** The Plan includes projects submitted by county transportation commissions based on their county- or district-level needs and goals as well as Regional Strategic Investments critical for meeting regional needs and goals.
- **Forecasted Regional Development Pattern:** The Plan uses adopted local land use plans and feedback from jurisdictions to achieve a more sustainable development pattern.

- **Stakeholder Engagement:** SCAG hosted 90+ working group and technical advisory committee meetings.
- **Public Outreach and Engagement:** SCAG held 27 public workshops and received more than 3,600 survey responses.
- **Leadership:** SCAG’s policy committees reviewed and discussed more than 100 staff reports relating to various aspects of Plan process and content. SCAG also formed three special subcommittees to address key planning issues: 1) Racial Equity and Regional Planning, 2) Resilience and Conservation and 3) Next Generation Infrastructure.

VISION AND GOALS

SCAG leads the region by defining where we want to go and outlining strategies to get us there.



Plan Spotlight

The state’s transition to clean vehicle technologies requires the region to identify new revenue sources.

Electric Vehicles (EV) and Advanced Clean Cars II regulation

- Advanced Clean Cars II requires that all vehicles sold in California be zero emissions by 2035.
- California Air Resources Board estimates that by 2035 ~50 percent of vehicles miles traveled will be zero emission.
- This transition results in an estimated \$93 billion loss in gas tax revenue through 2050.
- Senate Bill 1 included a \$100 EV fee, but that is not enough to replace this lost revenue.

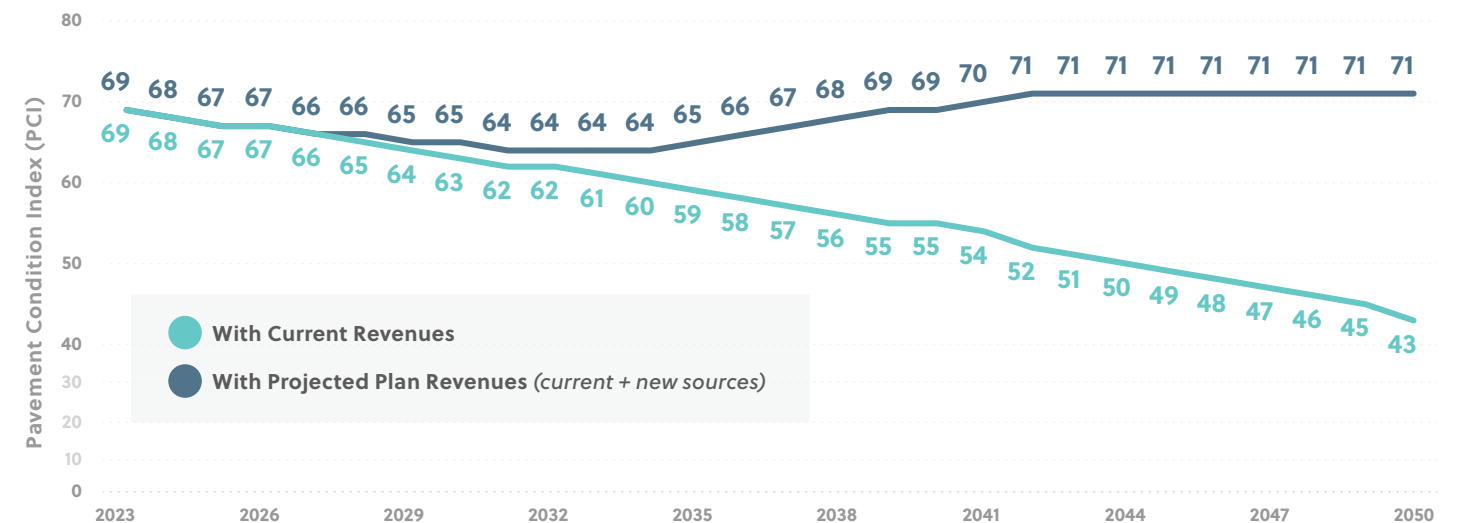
Transition to Sustainable Funding for Transportation

- The financially constrained Connect SoCal 2024 includes both a “traditional” core revenue forecast comprising existing local, state and federal sources—and a forecast of innovative but reasonably available sources of revenue.
- Finding new ways to make transportation funding more sustainable in the long term is critical. Connect SoCal 2024 proposes a mileage-based user fee to replace gas tax revenue and provide for the region’s ongoing transportation maintenance needs.
- Implementation of user fees will require further collaboration with local, regional, state and national partners – including enabling legislation, determining the mechanism(s) for capturing miles driven and ensuring equity for low-income households.

Regional Pavement Condition Index



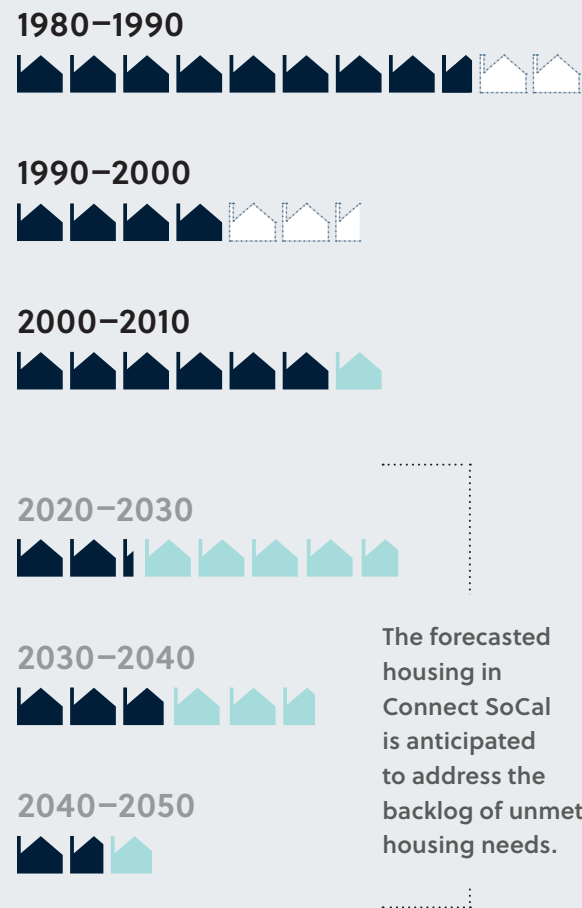
Pavement Conditions Linked to Revenue Projections



HOUSING SUPPLY & POPULATION GROWTH

As the region's population grows, more housing units are needed to make up for decades of unmet demand.

-  Housing built to meet population growth
-  Housing needed to meet population growth that was not built
-  Housing built beyond population growth needs



Source: U.S. Decennial Census, 1980–2020. Three persons per housing unit assumed, equivalent to the SCAG regional average household size since 2000. Each house represents 83,333 new housing units.

Plan Spotlight

Connect SoCal 2024 plans to reduce barriers to housing development to keep up with growing demand.

- Connect SoCal 2024 plans for a forecasted 1.6 million new households between 2019-2050, about 30 percent more household formation than Southern California achieved in the previous 30 years.
- The Plan, informed by feedback provided by local jurisdictions, helps to address the backlog of unmet housing need from the 1980s and 1990s.
- Almost \$160 million is available through SCAG programs, funded by REAP 1 and 2, to support local planning and production to meet housing need.
- The population forecast in Connect SoCal 2024 is about half the projected forecast from the last Plan.
- Although the region's population has recently declined, SCAG's demographic experts advise that over the long term, population growth will resume but at a slower pace than previous periods.

Connect SoCal 2024 focuses on improving regional resilience, including, but not limited to, the impacts of a changing climate.

- Connect SoCal 2024 considered the built, social, economic and natural shocks and stressors that can impact the region, such as a pandemic or a recession, and includes strategies to improve overall regional resilience.
- Connect SoCal 2024 implementation would reduce population growth in hazard areas facing risks like wildfire, flood and sea level rise by 20 percent compared to "business-as-usual" or baseline conditions.
- A more efficient development pattern, focused in Priority Development Areas (PDAs), creates residential energy and cost savings of \$200 million and \$360 million, respectively, compared to "business-as-usual" or baseline conditions. PDAs are defined as locations where people can access alternative modes of transportation or make short trips for day-to-day tasks.

Connect SoCal 2024 acknowledges the policy roots of inequality and identifies policies and strategies to create an equitable future and create equitable economic prosperity.

- Connect SoCal 2024 includes an Equity Analysis to evaluate the potential impacts of Plan implementation on communities, including both protected populations and Priority Communities. Performance measures include access to everyday destinations, bicycle and pedestrian collisions, noise impacts and geographic distribution of transportation investments.
- Direct transportation investments and increased efficiency of the transportation system overall will result in an estimated 480,100 new jobs per year on average.
- The spatial allocation of forecasted employment in the Plan is based on feedback on preliminary forecasts by local jurisdictions.
- Connect SoCal 2024 includes policies and strategies to support workforce development within the region, to educate and train individuals to meet the needs of current and future businesses and industry.
- Connect SoCal 2024 includes \$65.4 billion in goods movement capital projects and other programs, including grade separations.
- Connect SoCal strives to address equity concerns through enhanced transportation alternatives for transit dependent populations and discounts for low-income travelers, including the establishment of a Mobility Equity Fund.



Public Review & Comment Period

Nov. 2, 2023–
Jan. 12, 2024



Read the draft Connect SoCal 2024 plan and provide your comments at ConnectSoCal.org.



Main Office

900 Wilshire Blvd., Ste. 1700
Los Angeles, CA 90017
Tel: (213) 236-1800
www.scag.ca.gov

Regional Offices

Imperial County

1503 N. Imperial Ave., Ste. 104
El Centro, CA 92243
Tel: (213) 236-1967

Orange County

OCTA Building
600 S. Main St., Ste. 1143
Orange, CA 92868
Tel: (213) 630-1548

Riverside County

3403 10th St., Ste. 805
Riverside, CA 92501
Tel: (951) 784-1513

San Bernardino County

1170 W. Third St., Ste. 140
San Bernardino, CA 92410
Tel: (213) 630-1499

Ventura County

4001 Mission Oaks Blvd., Ste. L
Camarillo, CA 93012
Tel: (213) 236-1960

connectsocial.org

Connect SoCal 2024

A Plan for Navigating
to a Brighter Future

FACT SHEET

