



SOUTHERN CALIFORNIA
ASSOCIATION OF GOVERNMENTS
818 West 7th Street, 12th Floor
Los Angeles, CA 90017

T: (213) 236-1800

F: (213) 236-1825

www.scag.ca.gov

MEETING No. 3

OPEN DATA/BIG DATA – SMART AND CONNECTED SCAG REGION COMMITTEE

REGIONAL COUNCIL OFFICERS

President
Margaret E. Finlay, Duarte

First Vice President
Alan D. Wapner, Ontario

Second Vice President
Bill Jahn, Big Bear Lake

Immediate Past President
Michele Martinez, Santa Ana

COMMITTEE CHAIRS

Executive/Administration
Margaret E. Finlay, Duarte

Community, Economic &
Human Development
Rex Richardson, Long Beach

Energy & Environment
Carmen Ramirez, Oxnard

Transportation
Curt Hagman, San Bernardino County

Wednesday, August 16, 2017
10:00 a.m. – 12:00 p.m.

SCAG Main Office
818 W. 7th Street, 12th Floor
Policy Committee Room A
Los Angeles, CA 90017
(213) 236-1800

If members of the public wish to review the attachments or have any questions on any of the agenda items, please contact Tess Rey-Chaput at (213) 236-1908 or via email at REY@scag.ca.gov.

Agendas for the Open Data / Big Data – Smart and Connected SCAG Region Committee are also available at:

<http://www.scag.ca.gov/committees/Pages/default.aspx>

SCAG, in accordance with the Americans with Disabilities Act (ADA), will accommodate persons who require a modification of accommodation in order to participate in this meeting. SCAG is also committed to helping people with limited proficiency in the English language access the agency's essential public information and services. You can request such assistance by calling (213) 236-1908. We request at least 72 hours notice to provide reasonable accommodations and will make every effort to arrange for assistance as soon as possible.

This Page Intentionally Left Blank



Open Data / Big Data – Smart and Connected SCAG Region Committee
Members

1. Hon. Michele Martinez, City of Santa Ana (**Committee Chair**)
2. Hon. Margaret Finlay, City of Duarte
3. Supervisor Curt Hagman, San Bernardino County
4. Hon. Cheryl Viegas-Walker, City of El Centro
5. Hon. Jeffrey Giba, City of Moreno Valley
6. Hon. Pam O'Connor, City of Santa Monica
7. Hon. Margaret Clark, City of Rosemead
8. Hon. Rex Richardson, City of Long Beach
9. Hon. Richard Montgomery, City of Manhattan Beach
10. Marlon Boarnet, USC
11. Jack Ciulla, City of Santa Ana
12. Lea Deesing, City of Riverside
13. Crystal Dorn, Esri
14. Mark Greninger, Los Angeles County
15. Dr. Do Kim, Cal Poly Pomona
16. Scott Larson, Microsoft
17. Juan Matute, UCLA
18. Mojgan Sami, UC Irvine
19. Frank Ury, City of Mission Viejo

This Page Intentionally Left Blank

**OPEN DATA/BIG DATA – SMART AND CONNECTED SCAG REGION
COMMITTEE
AGENDA – MEETING NO. 3
WEDNESDAY, AUGUST 16, 2017
10:00 AM – 12:00 PM**

CALL TO ORDER

(The Honorable Michele Martinez, Chair)

PUBLIC COMMENT PERIOD – Members of the public desiring to speak on items on the agenda, or items not on the agenda, but within the purview of the Committee, must fill out and present a speaker’s card to the Assistant prior to speaking. Comments will be limited to three (3) minutes. The Chair may limit the total time for all comments to twenty (20) minutes.

ACTION ITEM

Page No.

- | | | |
|---|------------|---|
| 1. <u>Minutes of the July 19, 2017 Meeting</u>
<i>(Hon. Michele Martinez, Chair)</i> | Attachment | 1 |
|---|------------|---|

DISCUSSION ITEMS

- | | | |
|---|---|----|
| 2. <u>Technology Issues for Local Government</u>
<i>(Supervisor Curt Hagman, County of San Bernardino)</i> | Presentation | 6 |
| 3. <u>Data Loss Prevention and Cybersecurity</u>
<i>(George Khalil, City of Riverside)</i> | (Materials to be provided at the meeting) | |
| 4. <u>South Bay Net Fiber Backbone Network</u>
<i>(Aaron Baum, South Bay Cities Council of Governments)</i> | Presentation | 14 |
| 5. <u>Transitioning to a Clean Energy Future</u>
<i>(Erik Takayesu, Southern California Edison)</i> | Presentation | 22 |
| 6. <u>SCAG Strategic Plan Update</u>
<i>(Jason Greenspan, SCAG Staff)</i> | Presentation | 26 |
| 7. <u>Green Region Initiative Sustainability Indicators Map</u>
<i>(Monica Dorsey; Adrienne Garcia; and Catherine Saint, CivicSpark Fellows)</i> | Presentation | 31 |
| 8. <u>SCAG Data Tools – Open Data Portal</u>
<i>(Ping Wang, SCAG Staff)</i> | Presentation | 35 |

FUTURE AGENDA ITEM/S

ANNOUNCEMENT/S

ADJOURNMENT



This Page Intentionally Left Blank

**SOUTHERN CALIFORNIA ASSOCIATION OF GOVERNMENTS
MEETING NO. 2
OPEN DATA/BIG DATA – SMART AND CONNECTED SCAG REGION COMMITTEE
MINUTES OF THE MEETING
TUESDAY, JUNE 13 2017**

**THE FOLLOWING MINUTES ARE A SUMMARY OF DISCUSSION/ACTIONS TAKEN BY THE
ODBD COMMITTEE AT SCAG, 818 W. 7TH STREET, 12TH FLOOR, LOS ANGELES, CA 90017.**

Members Present

- | | |
|---------------------------------|----------------------|
| 1. Hon. Michele Martinez, Chair | <i>Santa Ana</i> |
| 2. Hon. Margaret E. Finlay | <i>Duarte</i> |
| 3. Hon. Pam O'Connor | <i>Santa Monica</i> |
| 5. Hon. Margaret Clark | <i>Rosemead</i> |
| 6. Frank Ury | <i>Mission Viejo</i> |
| 7. Crystal Dorn | <i>Esri</i> |
| 8. Mojgan Sami | <i>UC Irvine</i> |
| 9. Scott Larson | <i>Microsoft</i> |
| 10. Juan Matute | <i>UCLA</i> |

Members Not Present

- | | |
|------------------------------|------------------------------|
| 1. Supervisor Curt Hagman | <i>San Bernardino County</i> |
| 2. Hon. Jeffrey Giba | <i>Moreno Valley</i> |
| 3. Hon. Rex Richardson | <i>Long Beach</i> |
| 4. Hon. Cheryl Viegas-Walker | <i>El Centro</i> |
| 5. Hon. Richard Montgomery | <i>Manhattan Beach</i> |
| 6. Marlon Boarnet | <i>USC</i> |
| 7. Jack Ciulla | <i>Santa Ana</i> |
| 8. Lea Deesing | <i>Riverside</i> |
| 9. Mark Greninger | <i>County of Los Angeles</i> |

CALL TO ORDER

President Michele Martinez called the meeting to order at 10:03 a.m.

PUBLIC COMMENT PERIOD

There were no public comments.



RECEIVE AND FILE

1. Minutes of the June 13, 2017 Meeting

DISCUSSION ITEMS

2. Chair's Report

ODBD Committee Chair Michele Martinez provided introductions and commented that the last meeting of the ODBD Committee, held on June 13, 2017 was very successful and provided direction to staff to move forward with future meeting topics related to open data/big data. She noted that at the first meeting, presentations and discussion highlighted the Committee's role in preparing the agency to provide regional leadership around open data/big data and the integration of new technology. She reminded committee members that one of the primary directives for the Committee is to identify initiatives that SCAG can undertake to support its member cities, and residents, especially those disadvantaged communities.

Chair Martinez noted that there have been discussions of hosting a Data and Technology Summit in February 2018. She requested that if committee members have questions or suggestions that they connect directly with staff.

Chair Martinez stated that staff will be conducting an internal data inventory to document all of SCAG's current data sets and will report back on that at a future meeting. Work on the Strategic Plan is continuing. SCAG's executive team is currently discussing goals for the agency and the Committee will have a presentation on that at the next meeting.

3. SB 272 Enterprise Data Systems

Charles Kalil, Information Technology (IT) Director, City of Garden Grove, stated that SB 272 became effective on July 1, 2016. SB 272 added a section to the California Public Records Act that requires local jurisdictions to create a catalog of Enterprise Systems. This is intended to improve transparency by allowing the public to understand the types of data that local governments collect. SB 272 defines an Enterprise System as a software application or a computer system that collects, stores and analyzes information that each agency uses. The catalog must be made publically available upon request and be prominently posted on the agency's website.

Garden Grove and the Municipal Information Systems Association of California (MISAC) coordinated a collective project to create a system that helps all the local agencies comply with SB 272. The system standardizes the process for cataloguing enterprise systems and allows cities to choose from multiple options when displaying the information on their websites.

MISAC is comprised of public agency Information Technology professionals throughout California. The association promotes the understanding and strategic use of information technology with local government agencies through sharing of best practices. Charles noted that MISAC only focus is on IT



related issues and that SCAG has a broader focus on regional issues. He suggested that when those issues intersect the region could benefit from collaboration.

4. Developing and Open Data Program

Joaquin Siques, City of Pasadena, discussed Pasadena's approach as a leader in municipal big/open data efforts and the evolution using open/big data at the city level. Pasadena started collecting performance measurement data and performance monitoring data over ten years ago. About four years ago Pasadena's Information Technology Department came forward and made data available for different groups to innovatively use.

Joaquin provided an example of how Pasadena's data includes traffic counts, performance monitoring, traveler information, pedestrian counts, bicycle counts, real time operations, and inter-agency coordination. Key data that the city collects is travel time and origin destination data. Until recently, Pasadena posted its data on a daily basis. However, Pasadena recently migrated to a new central system and is working to reopen the data again to make the data accessible to various vendors and open data users.

Crystal Dorn, Esri, informed the Committee that there is a Waze Connected Citizens Program that municipalities can go the Program's website and sign up to participate in the Program to do data sharing.

Chair Martinez stated that SCAG should determine if congestion data sharing is of importance when discussing transportation and how to optimize traffic routes. One of the biggest issue beyond traffic congestion is parking, both of these sectors are the predominate barriers to building more housing.

Hon. Margaret Clark, Rosemead, stated that Metro is talking about using some of the Measure M money to improve intersection traffic signal synchronization. Congestion data would help determine where projects should be done or not.

Mojgan Sami, UC Irvine, stated that a system is needed that would not just begin and end in a city because the region's jurisdictions are so connected. The other area SCAG could have a big impact on is bike counts by changing the conversation from traffic to mobility.

Kim Do, Cal Poly Pomona, stated that other areas that can be added to the data collection would be construction and collision data, particularly if real time performance is to be measured.

Chair Martinez added education on "Safe Routes to School" could be included to ease congestion.

5. Social Change Data Commons

John Kobara, California Community Foundation (CCF), briefed the ODBD on how their organization will define, measure, and communicate the most significant needs of Los Angeles communities through the creation of a Social Change Data Commons platform. CCF is focused on



being an activist foundation to ensure Los Angeles County receives its share of philanthropy dollars.

The Social Change Data Commons establishes L.A. County's first comprehensive public library of open data. The data will be used to advocate for the unmet and underserved needs of L.A. County. CCF wants to focus on identifying data from publishers and providing access to data via a public website. The goal is to connect data researchers and users to curated and published data so that they can influence public policy. There are currently over 2,000 plus catalogued datasets, searchable by a powerful search tool.

6. SCAG Data Tools – Local Profiles

Michael Gainor, SCAG Staff, stated that SCAG's local profiles are prepared biennially for each member city, county, and unincorporated area in the SCAG region. The profiles contain current demographic, socio-economic, housing, transportation, and education data within historical context. The profiles help identify current and evolving demographic trends in local jurisdictions. They are provided as a service to SCAG's member jurisdictions. SCAG encourages all jurisdictions in the region to link SCAG's profile to their cities website.

The Local profiles are posted on the SCAG's website: www.scag.ca.gov/resources/profiles.htm.

Mojgan Sami suggest that SCAG include mortality, which can be obtained from hospital networks, in the public health data. Ms. Sami requested that staff post its SCAG Region Local Profile Report on SCAG's website. Additionally, air pollution indicators would be beneficial if included the SCAG's County Profiles. Open space as it relates to public health and proximity to parks would also be beneficial if included in the Local Profiles

Chair Martinez stated that as staff moves forward with the Local Profiles a Dashboard component is very vital as the region moves forward in looking at open data.

7. Regional Data Survey

Mike Jones, SCAG Staff, stated that regional data survey had been modified since the last ODBD meeting on June 13, 2017 per the feedback that staff received from the Committee. The survey will be deployed next week. The survey will be sent to SCAG's local jurisdictions, primarily to City Managers, with a possible deadline of one month after distribution. Staff also suggested launching a second survey that will go out to the region's non-agency stakeholders. Staff will take the information from the surveys, analyze it, and produce a report that will brought back to this committee.

Chair Martinez suggested that the survey be sent to the elected officials of SCAG's member agencies in case it does not get to the City Manager.



Hon. Margaret Clark requested that when the survey is sent to the elected officials, it should include the notation, "This survey is being sent to your City Manager, SCAG really needs a returned response to the survey."

Mojgan Sami stated that she had noted that the survey is about how to access data and felt that it should also be how to analyze data. It would be useful to know what kind of skills are lacking in using data. Additionally with regard to the broader categories, like land use, transportation, and water may be a challenge from an access point. The specific thing a city may want within that is not easily accessible to. Add a space where the question is asked, "Is there something specific in the categories above that you find difficult accessing?"

Do Kim suggested that it would be beneficial for SCAG to have a Focus Group or Town Hall meeting after the data is collected to allow further discussion.

Hon. Pam O'Connor, Santa Monica, suggested that City Attorneys also be engaged in the survey.

FUTURE AGENDA ITEM/S

- Update on the Regional Data Survey
- SCAG's Strategic Plan Integration Update
- Cyber Security as it relates to data and new technology (suggested by Frank Ury, City of Mission Viejo)
- Average practices of the jurisdictions within the region as it relates to the gap between best practices (suggested by Do Kim, Cal Poly Pomona)

ANNOUNCEMENT/S

Chair Martinez announced that SCAG is planning on hosting a Data and Technology Summit sometime in February 2018 with an expected attendance of approximately two hundred attendees and asked the committee members to share any ideas or suggestions with staff.

ADJOURNMENT

There being no further business, Chair Martinez adjourned the ODBD Committee meeting at 11:55 a.m.

The next meeting of the ODBD Committee will be Wednesday, August 16, 2017, 10:00 a.m.-12:00 p.m., at the SCAG office in downtown Los Angeles.

//



This Page Intentionally Left Blank

Technology Issues for Local Government

SB 649
FirstNet
Smart City Opportunities



SB 649 Relating to Telecommunications What the Bill Contains:

- Intended to streamline the implementation of “Small Cell” technology for wireless telecommunications.
- Defines “Small Cell” and “Micro wireless facility”.
- Provides that a small cell is a permitted use, subject only to a specified permitting process.
- Reaffirms that telecommunications facilities in public rights-of-way is a matter of statewide concern.
- Recognizes that impact on local interests from individual small wireless facilities will be sufficiently minor.
- Grants providers fair, reasonable, non-discriminatory, and nonexclusive access to locally owned poles, streetlights, and other suitable host infrastructure in public rights-of-way.



Consequences for Local Governments

- **Full discretionary review is eliminated. Discretionary approval of small cell permits are ONLY allowed in the coastal zone and in historic districts. All other areas must process these permits through either a building or encroachment permit**
- **Very limited ability to apply design standards for property in the right of way, however the language is conflicting and difficult to interpret**
- **Mandatory leasing of public property in and outside of the public right of way at prescribed fees**



Consequences (cont.)

- Fees for leasing of public property set at a range of \$100-\$850 per year, with an agreement to add language on how those fees could be calculated plus an additional \$250 for the time to set up the fee structure - after applying the calculated proposed fees to be used, those fees would likely barely cover maintenance costs.
- APA California also believes SB 649 will set a dangerous precedent for other private industries to seek similar treatment. APA California, along with other local government associations and many cities/counties continue to remain very opposed.

Source: American Planners Association California Chapter

FirstNet Update

- **Created by The Middle Class Tax Relief and Job Creation Act of 2012 in response to communications shortfalls during the Sept. 11, 2001 Terror Attack. To provide emergency responders with the first nationwide, high-speed, broadband network dedicated to public safety.**
 - First responders currently use land mobile radio (LMR) networks for mission critical voice communications.
 - The network is expected to initially transmit data, video, and other high-speed features, such as location information and streaming video, as well as non-mission critical voice.
- **When the nationwide public safety broadband network (NPSBN) is launched, it will not replace their LMR systems.**
 - Public safety entities will continue to use LMR networks for their mission critical voice needs.
- **FirstNet must consult with Federal, State, tribal, and local public safety entities to ensure that the network is designed to meet the needs of public safety across the country.**
 - State, tribal and local consultation will be a collaborative process, involving key stakeholders and leadership from each state and territory, and will incorporate enhancements and improvements as they develop.
- **FirstNet's mandate is to ensure there is service in all 50 US states, 5 territories and the District of Columbia.**
- **Goal: 2022 Network in operation**



FirstNet Implementation Timeline

- February 2012 - FirstNet authorized by Congress.
- January 2016 - FirstNet federal RFP issued.
- March 2017 - Firstnet contract awarded to AT&T.
- August 4, 2017 - Comments due to FirstNet. We have about 700 comments for California.
- Sept 18, 2017 - Updated Plan delivered to California. This is based on a 45-day response period for AT&T.
- Sept 18, 2017 - December 17, 2017 - This is the 90-Day Opt-In decision period for the Governor. This is contingent upon the updated plan being delivered to California on Sept 18, 2017.
- July 2018 - States who opt out find an alternate vendor to build a FirstNet compatible radio access network within the state and develop an alternate plan.
- 2022 - FirstNet fully operational nationwide.



FirstNet Concerns for Local Governments

- The FirstNet/ AT&T model appears to be very much a top-down, take-it-or-leave-it model.
- If California opts out of the FirstNet proposal, opportunities would be available to state and local governments:
 1. Purpose built network
 2. Local control
 3. Rural needs
 4. Cost uncertainty and increased revenue for State/Local Govts
 5. Public safety users are not happy
 6. AT&T looks to recover their initial investment in the FirstNet project of approximately \$28-\$38 billion by monetizing the remaining 20 MHz of the 700 MHz band.
 7. Many local jurisdictions have dramatically improved their communications capabilities since 2001, so they may not purchase the FirstNet services.



Public Safety

License plate scanners
Public space cameras
Gunshot monitoring
Noise monitoring
Fire detection
Weather monitoring
Earthquake early detection
Facial recognition and fingerprint scans
Medical records for first responders

Education

- Unlimited internet access for students
- Virtual (remote) classrooms
- Streaming best practices courses
- Vocational classes

Medical

- Telemedicine
- Mental health consultations
- Doctor visits
- Remote monitoring devices

Smart City

Public transportation alerts

Water monitoring

Smart lighting

Self-driving vehicles

Parking monitoring

Waste management

Wastewater management

Climate tracking

Wi-Fi public spaces

Traffic monitoring

Public signage

Structural health of bridges

River flow monitoring

Water leakage

Smart grid energy monitoring

Remote tank level

Perimeter access control

Detection of chemical or gas leaks

County/State Applications

Government kiosks to provide services without the need for travel

Remote visits of health and human services

Drone control

Virtual (remote) building inspections

Virtual (remote) agricultural / food inspections

Mobile payments

Remote language interpreting services (government, health, etc.)

Infrastructure monitoring

Remote courts (Needs)

Why Smart Cities Matter to SCAG and its Members

- Data can be collected on a wide variety of subjects in each of the previous categories.
- Data which can be collected and disseminated may include:
 - Traffic counts
 - Water usage
 - Electricity usage
 - Crime statistics
 - Security breaches
 - Potholes in streets
 - Storage tank levels
 - Pollution levels
 - River flow levels
 - Parking usage / availability
 - Student participation online
 - Health trends
 - Remote monitoring of health care
 - Infrastructure condition
 - Street lighting
 - Solid waste generation / collection
- Unlimited possibilities, with more applications emerging every day.


What SCAG can do to help its Members

- **Standardization**
 - Develop Best Practices
 - Avoid Duplication of Effort
 - Avoid Possible Liability
- **Security**
- **Privacy**
- **Transparency**
- **Data Sharing**
- **Coordination Between Members and Other Entities**

Questions?

South Bay Net Fiber Backbone Network


Open Data/Big Data Committee
SCAG
August 16, 2017




SOUTH BAY CITIES
COUNCIL OF GOVERNMENTS

Spring, 2016 Wake Up Call

**Business leaving Torrance
cited poor quality,
expensive network
services as a reason for
moving**



© Can Stock Photo - csp15246245



SOUTH BAY CITIES
COUNCIL OF GOVERNMENTS

www.southbaycities.org

Fiber as Essential Municipal Utility in 21st Century

- Commerce in a digital economy runs over fiber networks as much as streets and highways
- Demand for network services is expected to significantly increase every year
 - Cloud storage of software and data
 - New applications bring exceptional bandwidth demand



www.southbaycities.org

Fiber as Essential Municipal Utility in 21st Century

Equation for Cities:

Inadequate Network Infrastructure



Inability to Grow and Attract
Modern Business



Lower Quality of Life



www.southbaycities.org

Fiber as Essential Municipal Utility in 21st Century

Bottom-Line for Cities:

**Network Infrastructure
= a Strategic Asset**



www.southbaycities.org

SBCCOG – SBWIB Collaboration Summer, 2016

- EDD grant to obtain technical assistance
- Magellan Advisors:
 - Assess the network services infrastructure and market place
 - Develop strategy for improving the status quo



www.southbaycities.org

Magellan Planning Process Fall 2016 to Spring 2017

- Analyze data on residents and businesses by sector
- Survey cities re: existing fiber infrastructure, costs of existing services, and current network uses
- Survey of businesses
- Focus group and individual meetings with:
 - SB leading institutions
 - Municipal network working group – including IT, public works, planners, managers



www.southbaycities.org

Findings

- **Services are expensive and sub –standard; Infrastructure requires investment**
- **Network “consciousness” is poorly developed in cities and COG**
- **COG strategy can produce min. 1 gig/sec service thru collective purchasing for less what cities are paying today**



www.southbaycities.org

Recommendations

- **Public network can be assembled at 1 gig/sec min and for less on average than SB cities are paying today**
- **Joint action is required or a set of haves and have-not cities will develop**
- **Network strategy needed in cities & COG, requires education about digital applications**



www.southbaycities.org

Next Steps SBCCOG Fall/Winter 2017

- Search for external funding to develop the fiber backbone
- Provide education and training for city staff in network strategy and applications
 - “Brown Bag” seminars being provided at no cost from May through October
- Staff reports status to Board
- Request for “letter of interest” (no commitment) from cities
 - As close to 100% response will attract service providers to competition for fiber backbone development



www.southbaycities.org

Prepare RFP

- City Committee prepares RFP with input from each city
- Release no-commitment RFP
- City Committee to evaluate responses
- Contract approval with service provider(s)



www.southbaycities.org

Future Actions

Municipal network build-out

- Connect all city facilities to the high speed backbone
- Develop new network applications for service delivery, software development, etc.
- Extensive public Wi-Fi

City-wide network build-out

- Public-private partnerships
- Build out to residential neighborhoods and business centers
- Generate sub-regional and city income streams



www.southbaycities.org

Key Component of the South Bay Sustainability Strategy & LUTCAP

Fiber will:

- connect the functionally rich, compact neighborhood centers that bring many destinations within walking distance of most homes & are essential for using land use to advance sustainability
- bring many destinations virtually into the neighborhood centers – i.e. distance education, digital medicine, e-government, etc.
- support remote work from home and the center
- provide the tools required for growing a digital economy at the neighborhood scale



SOUTH BAY CITIES
COUNCIL OF GOVERNMENTS

www.southbaycities.org

Other SBCCOG Technology Initiatives

- Developing a matrix of technologies and their impacts on space demand -- buildings and locations
 - Case study of 3D printing
- Examining “smart city” applications and their impact on space demand
- Examining impact of technology on the future of bricks and mortar retail



SOUTH BAY CITIES
COUNCIL OF GOVERNMENTS

www.southbaycities.org

QUESTIONS + CONTACT INFO

- JACKI BACHARACH, EXECUTIVE DIRECTOR
jacki@southbaycities.org
- WALLY SIEMBAB, SR. RESEARCH DIRECTOR
ws@siembabplanning.com
- AARON BAUM, MOBILITY & TECHNOLOGY ANALYST
aaron@southbaycities.org



www.southbaycities.org

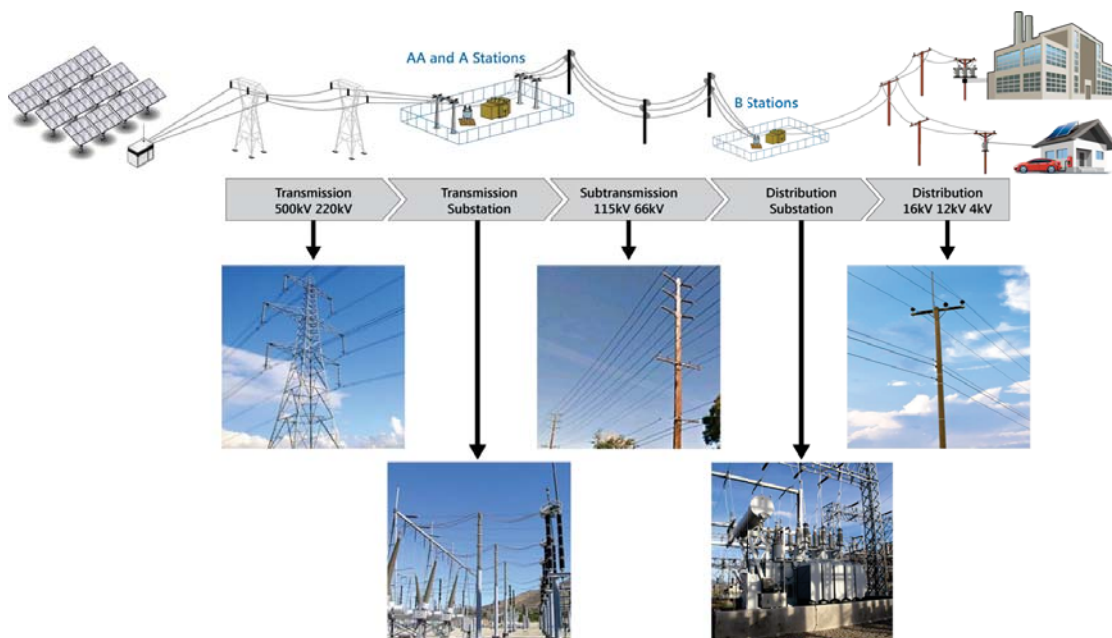
Transitioning to a Clean Energy Future

August 16, 2017

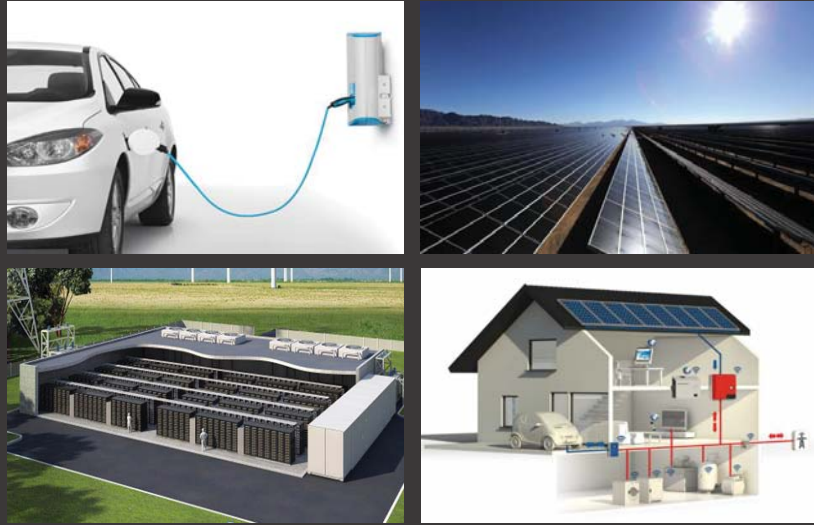
Erik Takayesu, PE
Southern California Edison



SCE and the Traditional Utility Power Grid



Changing Energy Landscape

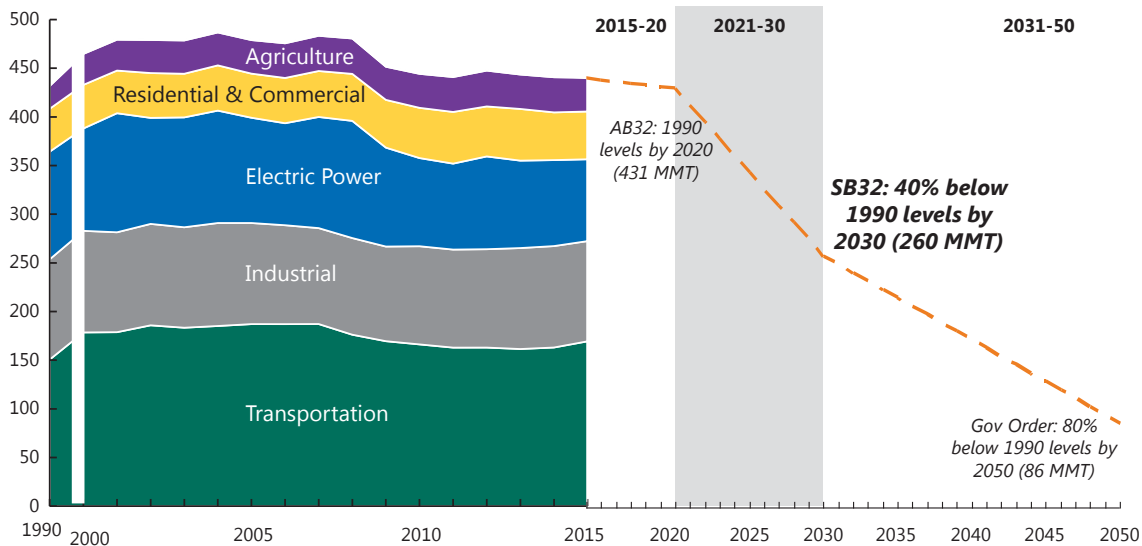


IoT spans across the energy ecosystem from the source to the consumer

Achieving CA's SB32 targets in 2030 requires a dramatic acceleration of GHG emission reductions

California GHG Emissions¹

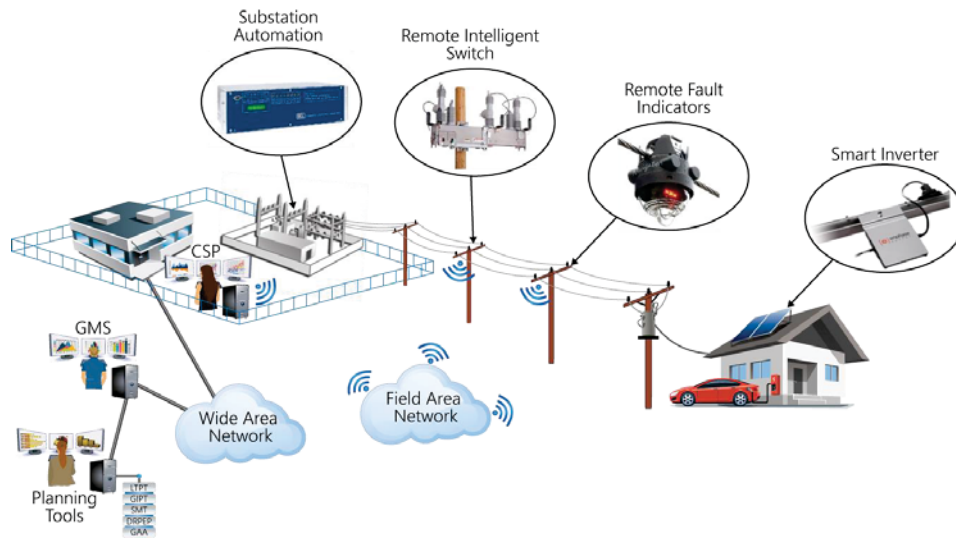
million metric tonnes CO2 equivalent (MMT)



Source: www.arb.ca.gov/cc/inventory/data/data.htm

1) Total emissions excludes 54 MMT CO2 equivalent per AB32 definition (including portions of transportation and industrial as well as military)

Evolving 21st Century Grid



The future grid will be increasingly sensor and data driven, further integrating grid and consumer devices

Developing New Programs and Capabilities



Data Analytics and Sharing



Interoperability and Cybersecurity



Charge Ready Program + 2017 Expansion



Preferred Resources Pilot

Opportunities for Partnership, Research, Collaboration



Customer Empowerment



Workforce Safety & Effectiveness



Renewable & Distributed Energy Resource Integration



Grid Efficiency & Resiliency



Information & Connectivity

PROMOTE

Clean Energy Transportation

BUILD

Smart Infrastructure

CONNECT

Information and People

Planning for the future will enable new opportunities to advance improved efficiencies for our customers and communities

Thank You

SCAG Strategic Plan Update

Jason A. Greenspan, AICP, LEED-GA
Manager of Sustainability

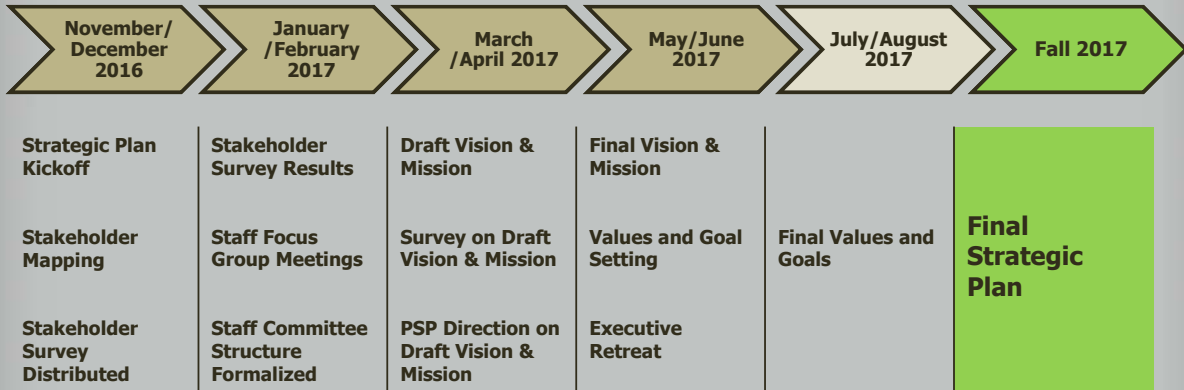


The Four Components of the Strategic Plan

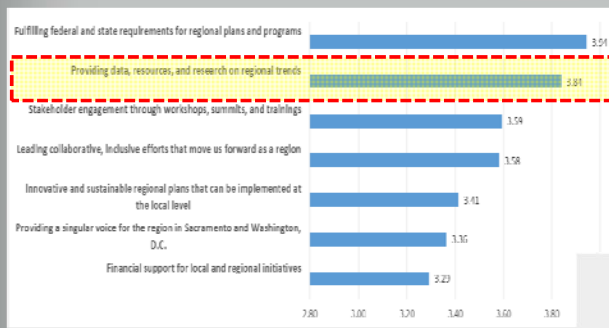
1. Vision
2. Mission
3. Core Values
4. Goals



Strategic Plan Timeline

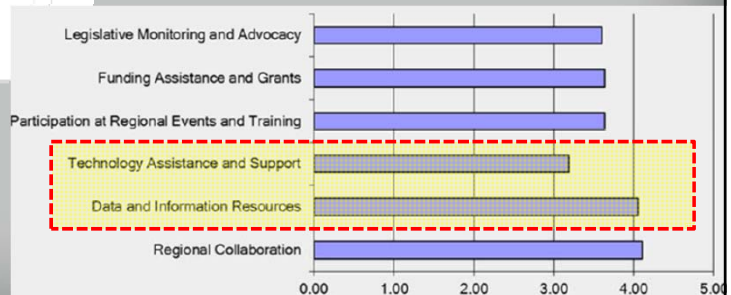


Survey Results Summary



How effective is SCAG at providing the following services?

What is the value of SCAG's services to you?



Vision and Mission

- Development Process
 - Stakeholder survey
 - Focus Groups
 - Staff Survey
 - President's Committee
- **VISION** - Bold, crisp, concise, aspirational
- **MISSION** - Purposeful, responsive

Vision & Mission Statement

TAGLINE

Innovating for a Better Tomorrow



VISION

Southern California's Catalyst for a Brighter Future

MISSION

To foster innovative regional solutions through inclusive collaboration, visionary planning, regional advocacy, information sharing, and promoting best practices.

Next Steps

Summer 2017

- Core Values
- Goals

Fall 2017

Adopt Strategic Plan!



Current Goal #4 & Objectives

“Develop, Maintain and Promote the Utilization of State of the Art Models, Information Systems and Communication Technologies”

1. Develop and maintain planning models that support regional planning
2. Develop, maintain and enhance data and information to support planning and decision making in a timely and effective manner
3. Maintain a leadership role in the modeling and planning data/GIS communities
4. Integrate advanced information and communication technologies

Thank You



This Page Intentionally Left Blank



Green Region Initiative

Monica Dorsey, Adrienne Garcia and Catherine Saint
CivicSpark Fellows

Purpose



- *Define and measure progress for 25 topics*
 - Detailed **metric reports**
 - Policy and performance **charts**
- *Visualize sustainability progress in the region*
 - **Map** provides a resource for local governments to explore best practices and collaborate on programs
- *Connect to RTP/SCS*
 - Land Use Strategy to support local sustainability planning

Overview of Project

Indicators Map

- Part of Green Region Initiative
- 191 cities and 6 counties
- 25 topics
 - GHG Reduction and Climate Action Planning
 - Renewables and Energy Efficiency
- Measuring progress:
 - V2.0 highlighted Policy & Programs
 - V3.0 measures performance
 - Reevaluating metrics for policy & performance

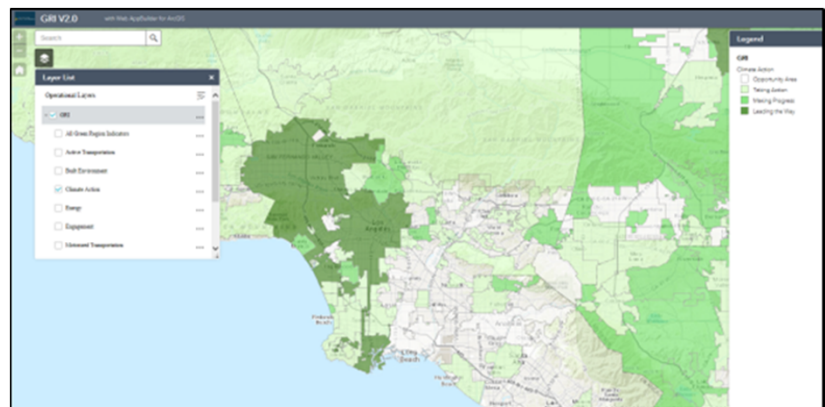
Previous Version 2.0

Color Categories

- White = Opportunity Area
- Light Green = Taking Action
- Medium Green = Making Progress
- Dark Green = Leading the Way

Not a score

- Colors represent stages of a process
- White spaces are opportunities
- Collaboration, not competition



Examples of Sources

- Each indicator has a unique methodology, with data coming from different open data sources
- Ex:
 - Parks - California Protected Areas Database (CPAD)
 - Population estimates - Department of Finance
 - Renewable Energy - California Solar Statistics

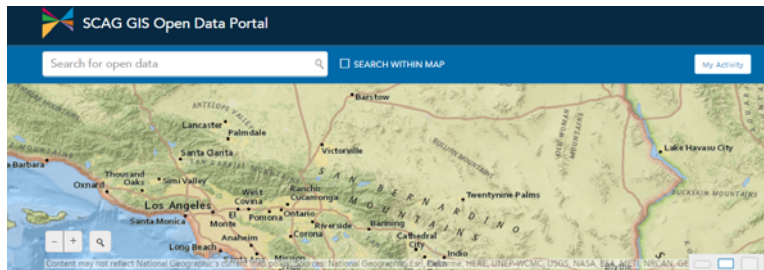
Version 3.0

- Story Maps
- Compares both policy & performance
- More user friendly
- Includes content summaries

Conclusion

The map aims to foster regional collaboration and track sustainability efforts made by local jurisdictions across a range of topics.

SCAG Open Data Portal



August 16, 2017

Current SCAG Data Portal

<http://gisdata.scag.ca.gov/Pages/Home.aspx>



Includes:

- Data Services
 - Data Library
 - Data Applications
- GIS Services
 - GIS Library
 - GIS Applications
 - Map Gallery
- Data Links

GIS/Data Library

<http://gisdata.scag.ca.gov/Pages/SocioEconomicLibrary.aspx>

GIS/Data Applications

<http://gisdata.scag.ca.gov/Pages/SocioEconomicApplications.aspx>

Regional Planning and Research

<http://scag.ca.gov/DataAndTools/Pages/RegionalPlanning.aspx>

SCAG
INNOVATING FOR A BETTER TOMORROW

SEARCH Search this site... GO

HOME > DATA & TOOLS > REGIONAL PLANNING & RESEARCH

Regional Planning & Research

Research & Analysis

SCAG's Research & Analysis Division is led by Frank Wen, PhD, and specializes in geographic, demographic, and economic analysis for local and regional planning initiatives – as well as "state of the practice" research in socioeconomic projections, local review and input process, and Environmental Justice Analysis. Working under Dr. Wen are a group of GIS and Data analysts, including Javier Aguilar, Kimberly Clark, Dr. John Cho, Jung Seo, Tom Vo and Ping Wang.

Publications

Expand All Collapse All

PUBLICATIONS IN 2016

1. Spatial and Socioeconomic Analysis of Commuting Patterns in Southern California Using LODES, CTPP, and ACS PUMS
By Tom Vo, Assistant Regional Planner, Jung Seo, Regional Planner Specialist, Jisu Lee, Intern, Simon Choi, Chief of Research and Forecasting, and Frank Wen, Manager of Research and Analysis at the 2016 TRB Annual Meeting in Washington D.C., January 2016. This study discusses about the relationship between commuting pattern and socioeconomic characteristics in Southern California, using multiple datasets.
2. Spatial Distribution of Urban Runoff Pollutant in the Southern California Region and Its Impacts on Environmental Justice Analysis: An Application of GIS Using EPA's PLOAD Model and SCAG Land Use Scenario Dataset
By Tom Vo, Assistant Regional Planner, Ping Wang, Regional Planner Specialist, Alison Lindor, Senior Regional Planner, Simon Choi, Chief of Research and Forecasting, and Frank Wen, Manager of Research and Analysis, and Michael Mroczek, Intern at the 2016 TRB Annual Meeting in Washington D.C., January 2016. This study

DATA & TOOLS

- GIS & Data Services
- Modeling & Forecasting
- Regional Planning & Research
- Demographic Workshop
- Local Profiles
- Document Libraries
- Resources & Related Sites

QUICK LINKS

- Agendas & Minutes
- Agenda eMail List Sign-up
- Careers & Opportunities
- Calendar of Events
- Doing Business with SCAG
- SCAG E-Newsletters
- SCAG Factsheets
- Regional Offices

SCAG-TV

SCAG's Video Library Includes

Local Profiles

<http://scag.ca.gov/DataAndTools/Pages/LocalProfiles.aspx>

SCAG
INNOVATING FOR A BETTER TOMORROW

SEARCH Search this site... GO

HOME > DATA & TOOLS > LOCAL PROFILES

Local Profiles

SCAG has prepared Local Profiles for each SCAG member jurisdiction every two years since 2009. Local Profiles are intended to provide jurisdictions with updated data and analysis to support community planning and outreach efforts. They are also useful resources for the business community, academia and residents in Southern California. SCAG is releasing the 2015 Local Profiles at the 2015 Regional Conference & General Assembly to be held in Palm Desert on May 7, 2015. For additional information, please contact:

Mike Gaior
Senior Regional Planner
Land Use and Environmental Planning
Tel: (213) 236-1822
Email: gaior@scag.ca.gov

COUNTIES

- Imperial County
- Los Angeles County
- Orange County
- Riverside County
- San Bernardino County
- Ventura County
- Imperial County (Unincorporated Area)
- Los Angeles County (Unincorporated Area)
- Orange County (Unincorporated Area)
- Riverside County (Unincorporated Area)
- San Bernardino County (Unincorporated Area)
- Ventura County (Unincorporated Area)

IMPERIAL COUNTY

LOS ANGELES COUNTY

DATA & TOOLS

- GIS & Data Services
- Modeling & Forecasting
- Regional Planning & Research
- Demographic Workshop
- Local Profiles
- Document Libraries
- Resources & Related Sites

QUICK LINKS

- Agendas & Minutes
- Agenda eMail List Sign-up
- Careers & Opportunities
- Calendar of Events
- Doing Business with SCAG
- SCAG E-Newsletters
- SCAG Factsheets
- Regional Offices

SCAG-TV

SCAG's Video Library Includes

SCAG Economic Strategy and Data

<http://economy.scag.ca.gov/Pages/default.aspx>

SCAG Data/Map Book

ftp://data.scag.ca.gov/Data_Map_Book/=pdf/

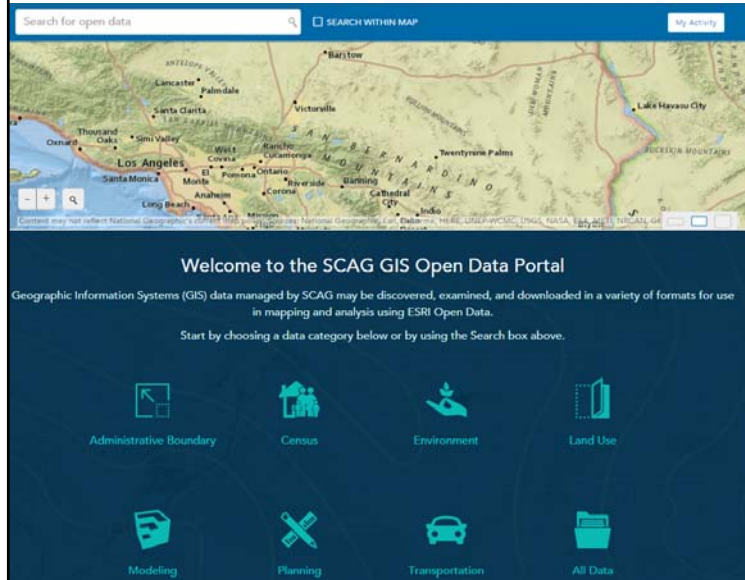
SCAG prepares and provides a set of GIS maps to local jurisdictions for their review. These GIS maps are identified in SB 375 as required to be considered in SCS development.

The list of data/GIS maps included in this book:

Land Use	Major Streets & High Quality Transit Corridor
General Plan	Transit Priority Area
Zoning	Geographical Boundaries
Existing Land Use	City Boundary & Sphere of Influence
Resource Areas & Farmland	Census Tract Boundary
Open Space and Parks	Transportation Analysis Zone (TAZ) Bound
Endangered Species and Plants	Socioeconomic Data
Roads	2012 Base Year Estimates
Natural Community & Habitat Conservation	2020, 2035 and 2040 Projections
Farmland	

New SCAG Open Data Portal

<http://gisdata-scag.opendata.arcgis.com/>



Benefits:

- Data-sharing
- Collaboration
- Smart Planning

Developed in 2016

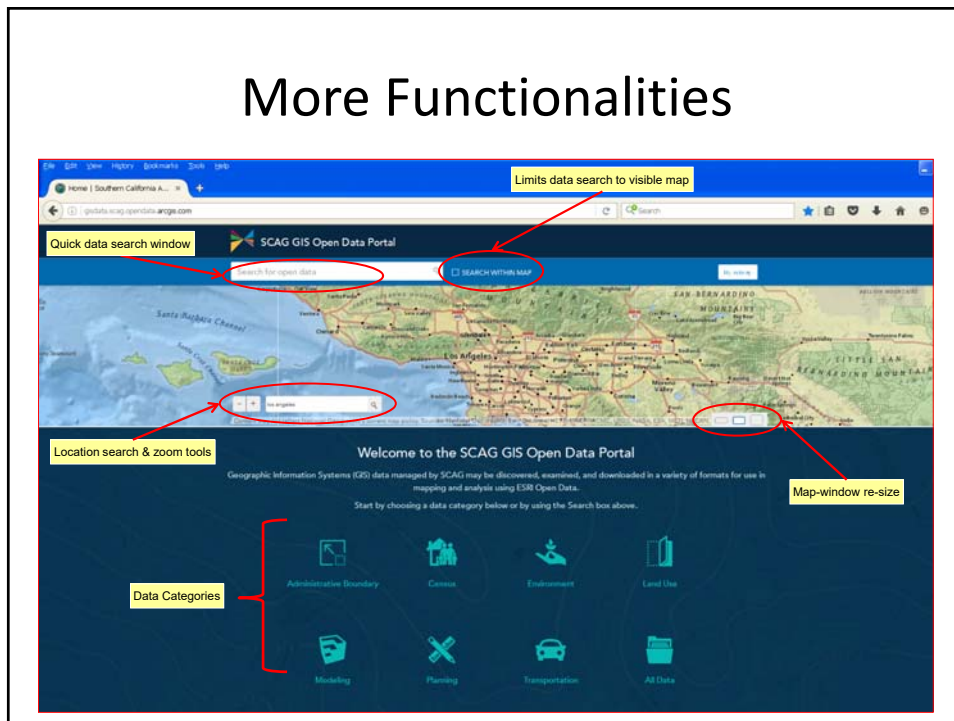
With AGOL Tech

7 data Categories

Functions:

- Search
- Preview
- Filter
- Download

More Functionalities



Multi-options for Preview, Filter, and Download Data

The screenshot displays the SCAG GIS Open Data Portal interface. At the top, there is a search bar and a 'SEARCH WITHIN MAP' button. Below this is a map of the SCAG region with a red circle highlighting a specific area. To the left of the map, there are 'Data preview options' and a 'Details Table Charts' menu. Below the map is a data table with columns: CITY, CITY_ID, COUNTY, ACRES, PERMETER, YEAR, OBJECTID, and Shape_area. A 'Preview, Query selection' button is located above the table. To the right of the table, there is a 'Download dataset & format selection' button. Below the table, there is a 'Query (data filter) window' with a search bar and a '10000' scale indicator. At the bottom left, there is a 'Dashboard' section with a donut chart and various data visualization options.

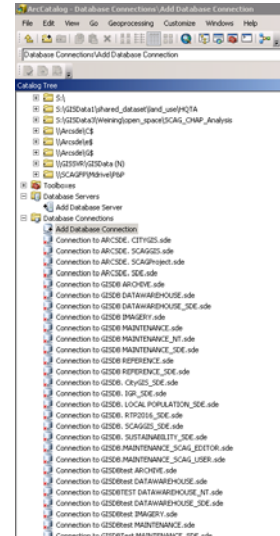
CITY	CITY_ID	COUNTY	ACRES	PERMETER	YEAR	OBJECTID	Shape_area
Garden Gr...	29000	Orange	11843.937...	62433.5838...	2012	140	44302910.30...
Carson	11530	Los Angeles	12115.214...	38908.0923...	2012	23	49028533.17...
Camarillo	10044	Ventura	12345.716...	64992.3364...	2012	1	50473070.34...
Willmar	25445	Riverside	10157.201...	35490.3207...	2012	121	61236916.28...
Orland	54652	Ventura	17314.272...	102794.4708...	2012	8	70046379.84...
Berkeley	4030	San Berna...	38419.342...	102091.0133...	2012	192	106915264.4...
Ontario	83866	San Berna...	31921.364...	54193.4903...	2012	188	129181177.4...
Santa Clarita	49586	Los Angeles	27923.082...	113923.9049...	2012	121	149827099.5...
San Berna...	45000	San Berna...	38914.576...	215875.0463...	2012	107	141528547.2...

Multi-tools for Data Visualization and Analysis

The screenshot shows the ArcGIS My Map interface. On the left, there is a 'Dataset tools' panel with options: Show legend, Show table, Data query (filter) options, Change symbology style, and More options. The main map area displays a satellite view with purple polygon overlays. A 'Map print & measure tools' panel is visible on the right side of the map. The top of the interface includes a search bar and a 'My Map' title.

Characters of Datasets in SCAG Open Data Portal

- Reside in Data Warehouse built since 2010 (SCAG EGIS program)
- Include Over 400 GIS datasets in different years
- Comply to Federal *metadata requirement*
- Are standardized over six counties in SCAG region
- Are complete and ready to share high quality of data



Benefits of SCAG Open Data

- Share authoritative planning data
- Enhance communication of data connectedness and information dissemination
- Collaborate integrated planning
- Promote engagement in planning (connecting everyone)
- Improve data timely (public) feedback
- Is scalable for big data analytics

Challenges

- Massive GIS data collection and cleanup for six counties of SCAG region
- System performance to visualize, explore, filter, and download data
- Data Security
- Rapid technological evolution (system infrastructure, web)
- Need for scalable and adaptable infrastructure (human, IT etc.)

Next Steps in FY17/18

- Improve Open Data Portal (Integrated and comprehensive)
 - Spatial GIS Data (shapes, zipped)
 - Tabular data (csv, xls, db)
 - Map gallery (PDF, jpeg)
 - Analytical Data Reports (docx)
 - GIS/Data Web apps (visualization and analysis)
- Upgrade the Portal with latest technology (improvement/accessibility)