

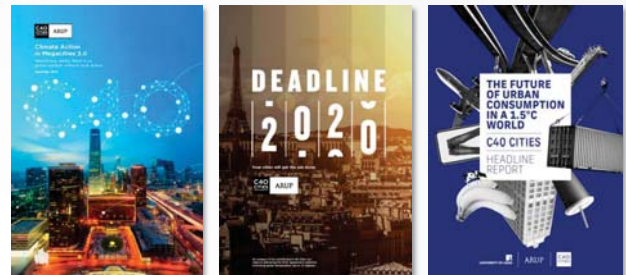
SCAG Panel: Introducing the 15-minute city

Christopher Pountney

About us

Arup & C40 Cities partnership

Arup has worked with C40 since 2009 to develop strategic analysis and research that is central to progressing our understanding of how cities contribute to climate change mitigation and adaptation. The partnership supports a strong analytical research agenda while helping city actors to identify opportunities, collaborate and develop deliverable solutions to accelerate and expand action on climate change.



The neighbourhood opportunity

We must harness a model for low-carbon urban development that is human-scale, thriving and inclusive for our future.



Horacio Rodríguez Larreta
Mayor of Buenos Aires
Vice-Chair of C40 Cities



The neighbourhood scale in a city offers some unique opportunities to accelerate towards net zero.



Anna König Jerlmyr
Mayor of Stockholm
Vice-Chair of C40 Cities



Unique opportunities

Scale

Innovation

Communities

Governance

Financing
& Funding

Collaboration

Raise ambition
Drive change

Taking a holistic approach

Green and thriving neighbourhoods

Net zero

Minimize emissions throughout the project **lifecycle** and achieve **net zero** by counteracting any **residual emissions** in a **robust and transparent** way.

Resilient, people-centered

Meet the **essential needs** of people at the neighbourhood scale. Support **'human scale' local life** which encourages healthy, sustainable lifestyles.

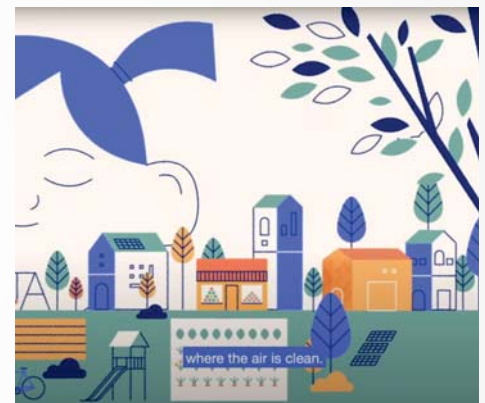
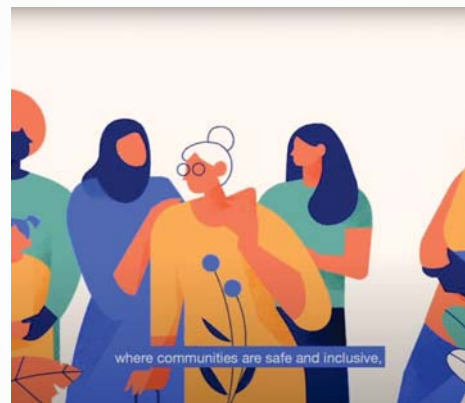
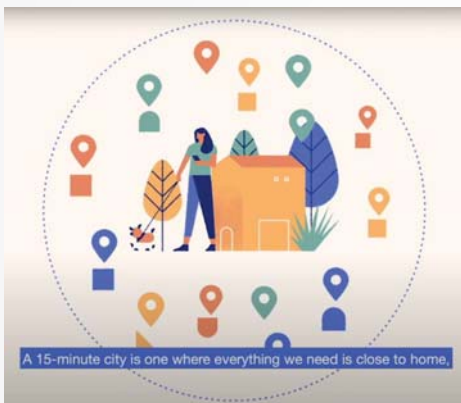
A green and thriving neighbourhood should enable residents of all ages, backgrounds and abilities to meet their daily needs close to home.



Anne Hidalgo
Mayor of Paris
Former chair of C40 Cities



Core concept: 15-minute city



<https://www.youtube.com/watch?v=McGyONofhi4&t=5s>

15-minute cities



1. Complete neighbourhood

Prioritise local life where people access what they need within a short walk or bike ride



2. People-centred mobility

Encourage active travel with well-designed spaces, infrastructure and services



3. Connected place

Enhance city-wide connectivity with stronger physical and digital links



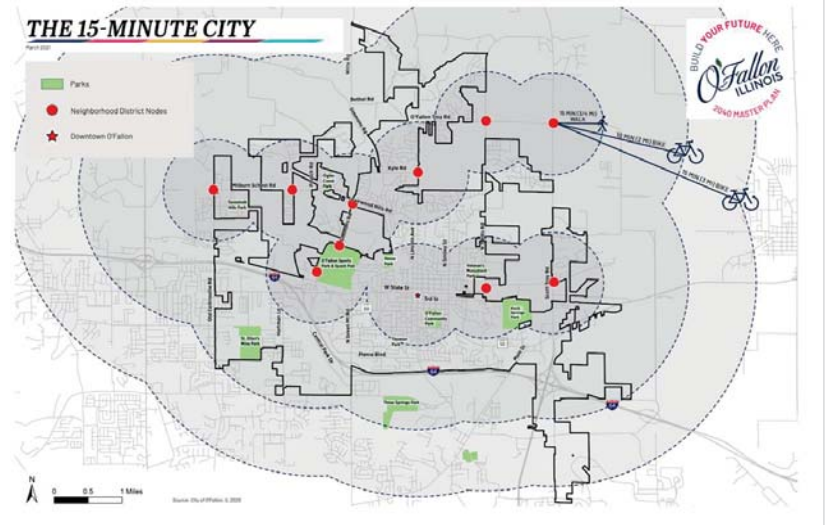
4. A place for everyone

Tackle climate change, improve living standards and create better jobs for all

Example – O’Fallon, IL

OUR ORGANIZING CONCEPT: THE 15-MINUTE CITY

What if we strengthened all the good things about O’Fallon and had more time to enjoy them?



1. Complete neighbourhood

- **Compactness and mixed-use** more suited to active travel, and key to make local services & transport infrastructures viable
- **Proximity and decentralisation of city life** to reduce the need to travel outside the neighbourhood and ensure equitable access to services and amenities
- **Activation of ground floors** to inject more life create pleasant and safe streets to walk in and support the local economy and retail
- **Adaptable spaces** to make the most of existing stock & concentrate activity avoid single-use buildings and foster flexible spaces that allow several uses



Paris

A semi-public agency dedicated to revitalizing local commerce and crafts within the city. One of their projects involves buying up abandoned shops and renting them at below market rates to local businesses and creatives that would otherwise not be able to afford the rent.



2. People-centred mobility

- **Good street design** to make walking and cycling the mode of choice
- **Reclaiming city spaces from private vehicles** to improve active travel and develop new uses for social and community-building
- **Tactical urbanism and temporary activation** to engage and inspire local residents

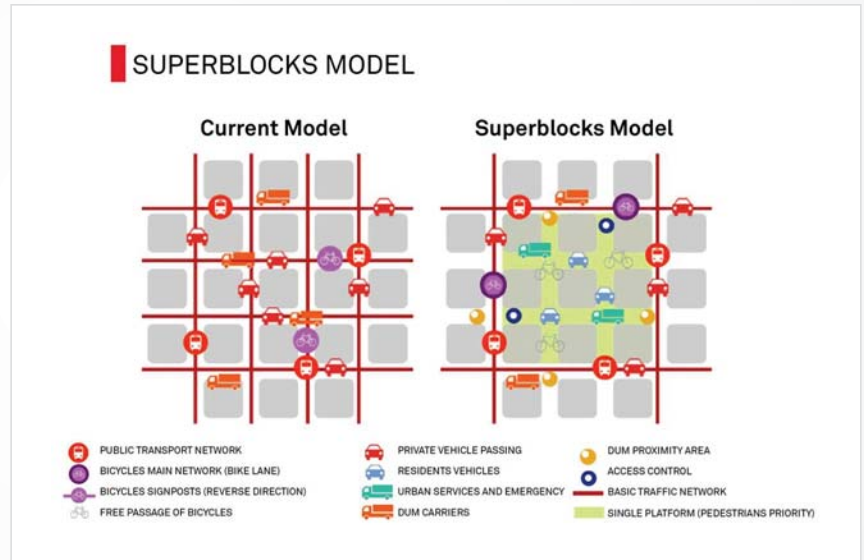


Milan

The Piazza Aperte program in Milan has been seeking to reclaim spaces in piazzas that were once dedicated to cars, using a range of temporary strategies. The approach relies on working with inhabitants to restyle their neighbourhoods through cheap and scalable spatial interventions.



Example – Barcelona



3. Connected place

Because supporting local life does not mean isolation, it is vital to ensure each neighbourhood is connected to the rest of the city and beyond to enhance social and economic connectivity

- **Physically connected** accessibility & affordability of public transit to connect the neighborhood with other parts of the city
- **Digitally connected** enable more flexible working practices, reduce the unnecessary travel ensure



São Paulo

The City has developed a 'neighbourhood internet services', developing a network of comfortable neighbourhood working spaces with good internet access.

It aims to inject life into neighbourhood main streets and encourage people to work remotely.



4. Inclusive and cohesive community

- **A diverse mix of people** equal access to services and opportunities, including varied and affordable homes
- **Active community engagement** to understand the specific needs of different individuals and groups and support the transition to behavior change
- **Opportunities for social interaction** to tackle loneliness and build more resilient and cohesive communities
- **Anti-displacement policies**



Los Angeles

The Watts' Transformative Climate Communities project is a community-driven vision to transform one of Los Angeles' most disadvantaged neighbourhoods.

The projects include affordable housing, low-carbon transport for residents, planting more than 3,300 trees, and development of amenities to respond to the needs of the community



Benefits for climate mitigation and adaptation

- Promoting people-centered streets and mobility **reduces transportation-related emissions and air pollution**
- Making the case for compact, mixed-used development and better use of the existing built environment **reduces buildings-related emissions**
- Equipping people with local facilities and services that makes sustainable choices easier and cheaper, contributes to **lower consumption-based emissions**
- Fostering green infrastructure and reclaiming parking spaces, contributes to **cooler temperatures in public spaces and reduce flooding risk**
- Reinforcing a sense of community where everyone has a place and by celebrating adaptable spaces that can be used by all residents, helps to build **more cohesive and resilient communities**

Accelerator for climate action

- Helps build a vision that citizens and their leaders can strive for, as it sits right at the intersection between the political and the technical
- A timely approach for a green and just recovery from COVID-19, focusing on neighborhood-scale actions, improving quality of life, and economic revitalization



Scan to read our **guidebook** and find out more



ARUP