



Equity Working Group

Regional Planning Working Group

Thursday, July 20, 2023

WWW.SCAG.CA.GOV

Session Logistics



The meeting will take approximately 1.5 hours.



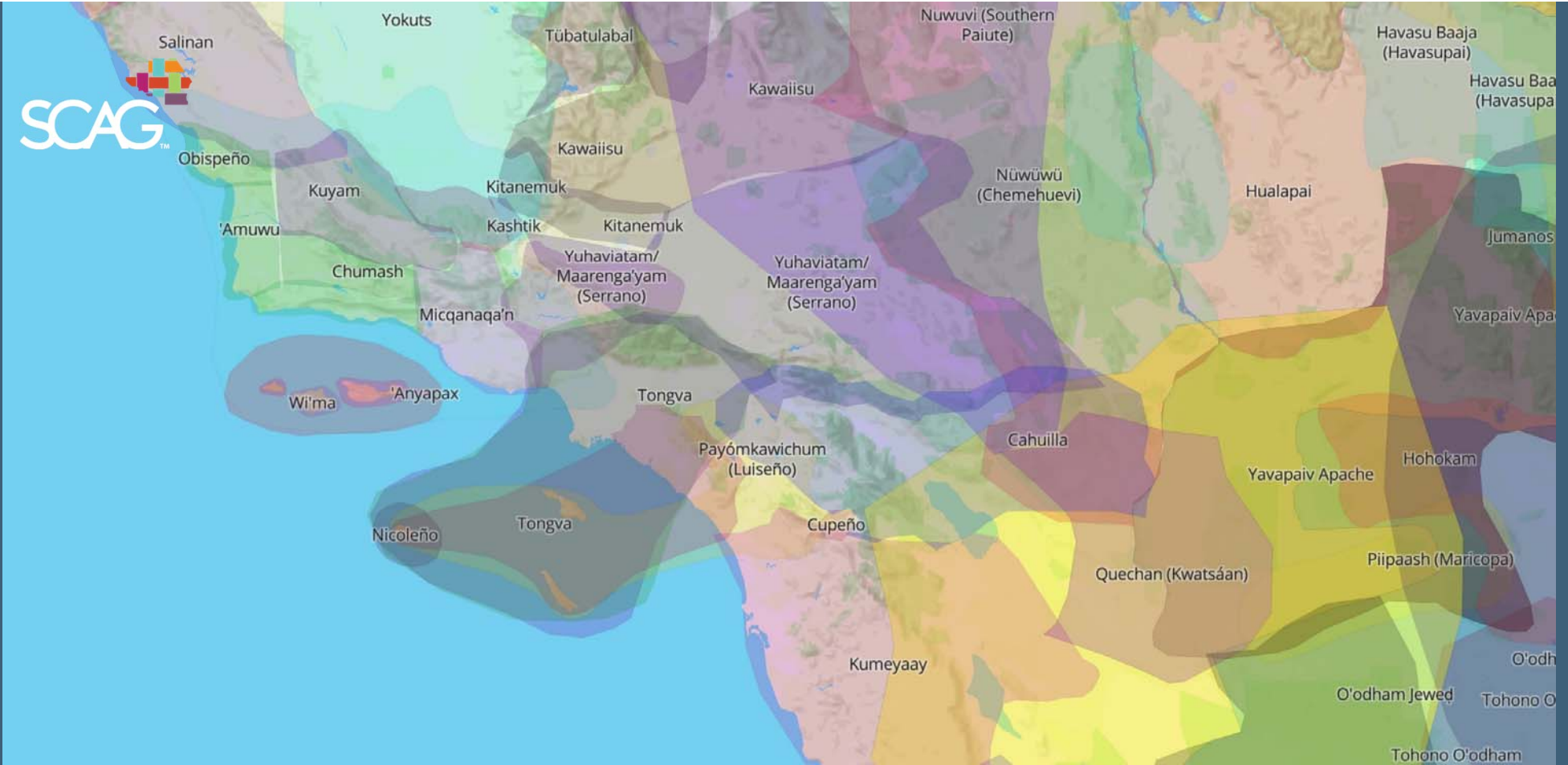
All participant lines will be muted.



At the end of today's panel, there will be a Q & A. If you have a question, please type it into the chat box.



All presentations will be posted on the SCAG website.



LAND ACKNOWLEDGEMENT

AGENDA

- 1. Welcome** **1:00 – 1:10pm**
Jeannie Ma, SCAG
- 2. The Implications of Freeway Siting in California** **1:10 – 1:40pm**
Jacob Wasserman, UCLA Institute of Transportation Studies
- 3. Carmen Ramirez Award For Equity: Recycled Water Collaboration** **1:40 – 2:00pm**
Tom Crowley, City of Rialto
Elizabeth Hurst, Inland Empire Utilities Agency
- 4. Climate Equity Compendium** **2:00 – 2:20pm**
Jaqueline Favors and Matthew Aldama, SCAG CivicSpark Fellows
- 5. Connect SoCal 2024 Update** **2:20 – 2:30pm**
Leslie Cayton, SCAG
- 6. Connect SoCal Equity Analysis Update** **2:30 – 2:40pm**
Anita Au, SCAG
- 7. Announcement & Offers, Requests, and Connections** **2:40 – 2:50pm**
Jeannie Ma, SCAG

Equity Working Group History

- Available at: <https://scag.ca.gov/post/equity-working-group-ewg>

Equity Working Group History

Meeting Materials	Topic(s)	Speaker(s)
June 24, 2021 Agenda Presentation Summary	SCAG Racial Equity Early Action Plan	Courtney Aguirre, SCAG
	Equity in Action: Culver City	Serene Wright-Black and Lauren Marsiglia, Culver City
	Environmental Justice Elements: Port Hueneme and El Centro	Tony Stewart, City of Port Hueneme Lexi Journey, Rincon Consultants Angel Hernandez, City of El Centro
	Mobility Equity Framework	Hana Creger, Greenlining Institute
	SCAG Environmental Equity Definition	Emily Rotman, SCAG
September 23, 2021 Agenda Presentation Summary	Orange County Equity Map and Social Progress Index	Katie Kalvoda, Advance OC
	City of Los Angeles Equity Index	Chelsea Lucktenberg, City of Los Angeles
	Equity in Action: City of Long Beach	Katie Balderas, City of Long Beach
	SCAG Sustainable Communities Program Call for Projects 4: Civic Engagement, Equity, and Environmental Justice	Anita Au, SCAG
December 9, 2021 Agenda Presentation Summary	LA Metro Equity Tools	KeAndra Cylear-Dodds, Los Angeles County Metropolitan Transportation Authority
	Equity in Action: City of Pomona Racial Equity StoryMap	Anita Gutierrez, City of Pomona
	Environmental Justice Elements: Palmdale and Santa Ana	Megan Taggart, City of Palmdale Melanie McCann, City of Santa Ana
	SCAG Equity Indicators	Anikka Van Eyl, SCAG
	SCAG SoCal Goods Movement Impacted Communities Assessment Study	Alison Linder, SCAG
March 24, 2022 Agenda	Center for Social Innovation at UCR: Frameworks for Action on Inclusion and Engagement	Karthick Ramakrishnan, UC Riverside

**What actions have you already
taken to advance equity in
your jurisdiction?**

**Fill out the poll on
your screen!**

Slide 6

AEO **Need to update**

Annaleigh Ekman, 2023-07-18T05:07:22.153

The Implications of Freeway Siting in California

Jacob L. Wasserman

July 20, 2023



Background

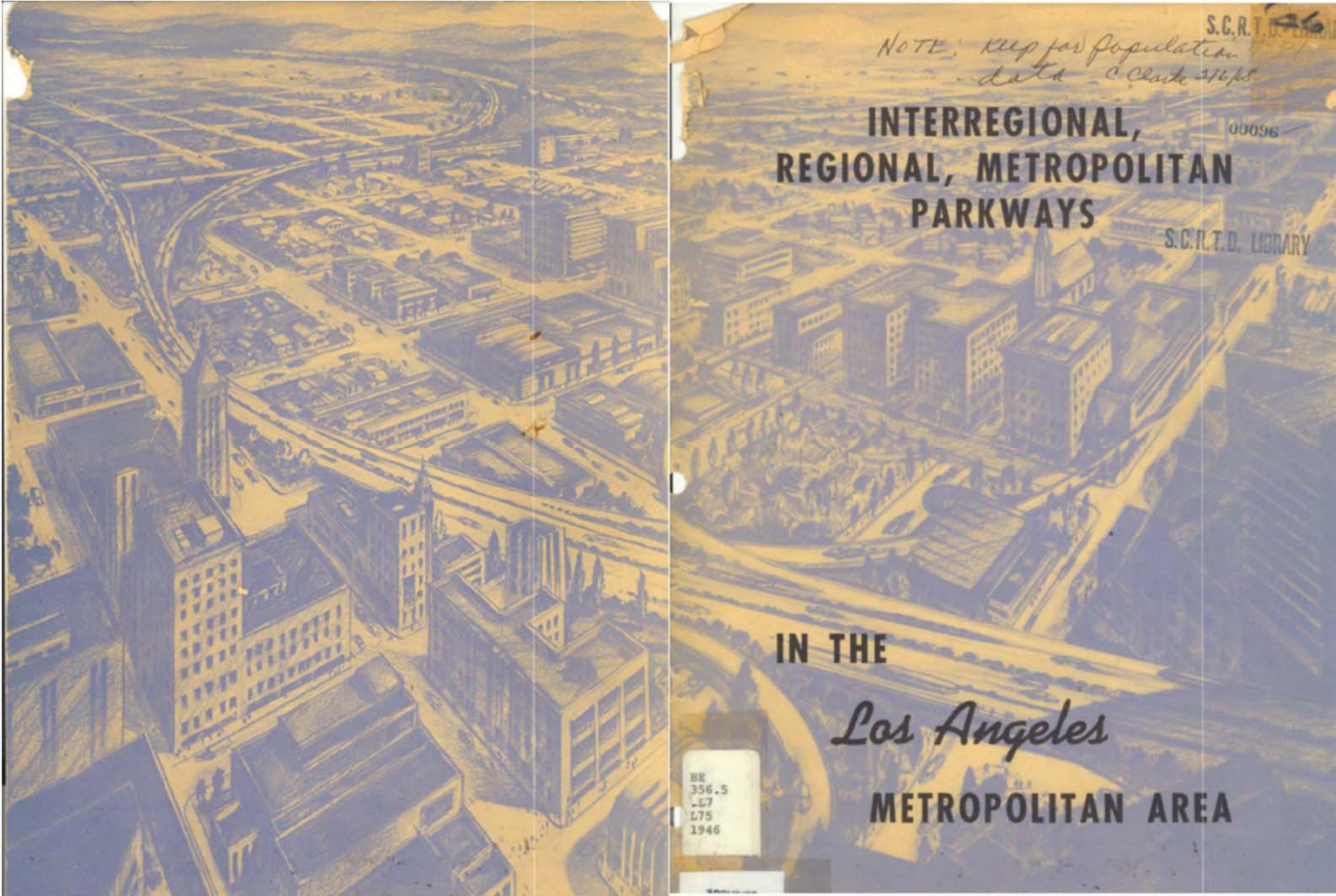
Race and Freeway Siting



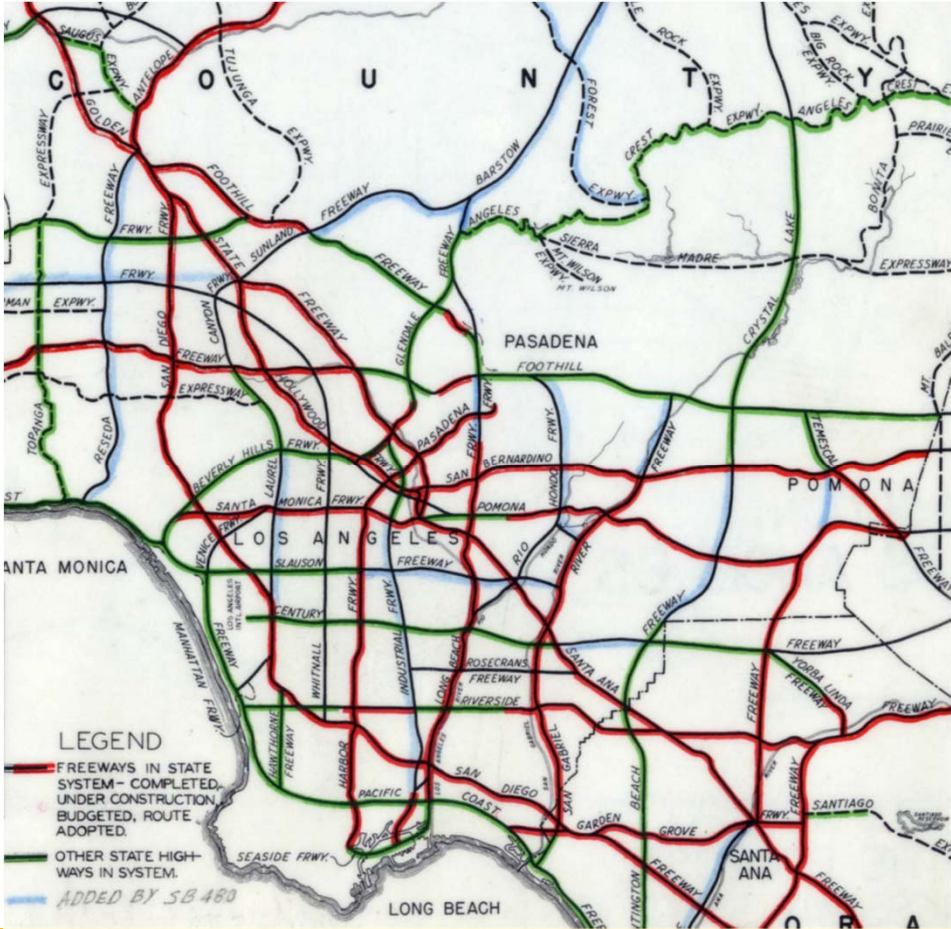
“Take me to a strange city where I’ve never been before and point out the areas in which Negroes live and I will lay you some neat odds that I can point out the route of the city’s next freeway.”

- Loren Miller,
California Eagle, 1961

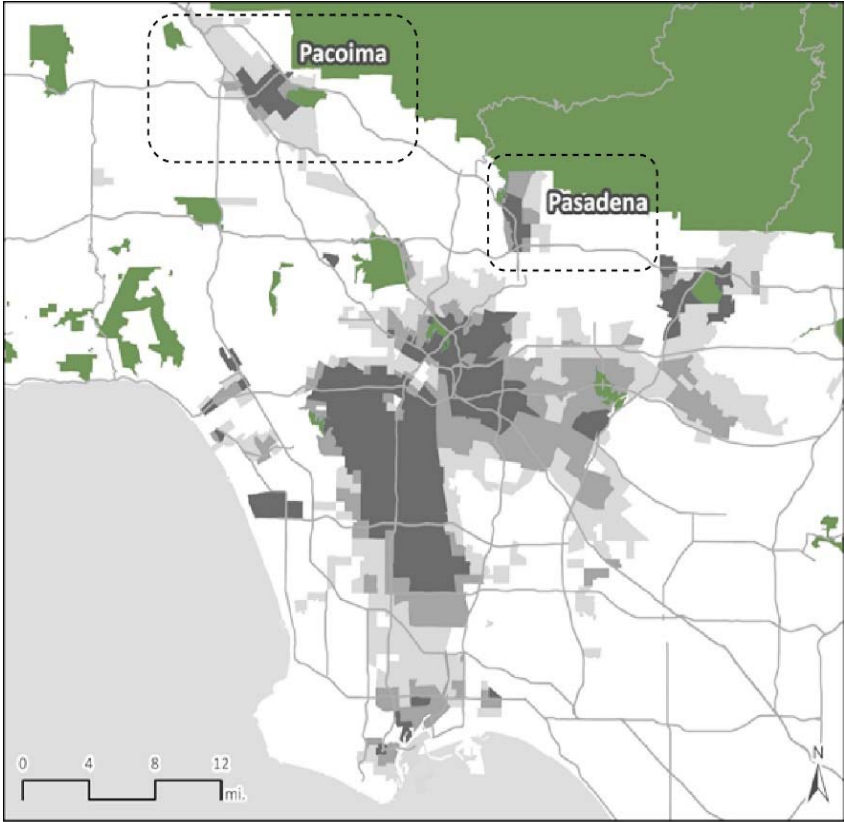
Planning for Freeways in LA



Freeways Built and Unbuilt



Case Study Areas: People of Color, 1970

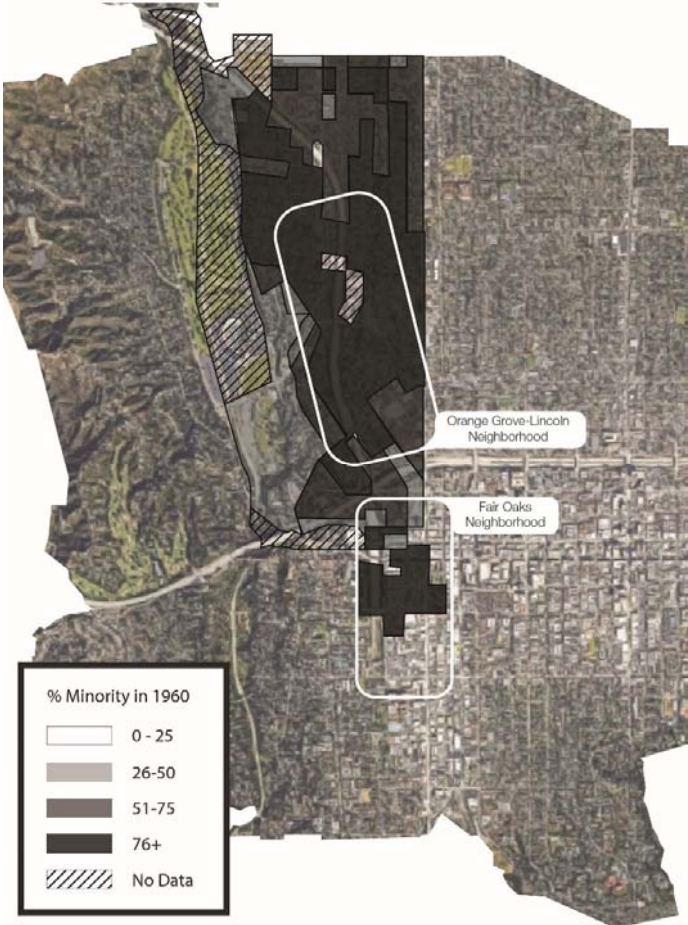


Two Suburban Communities of Color



Pasadena

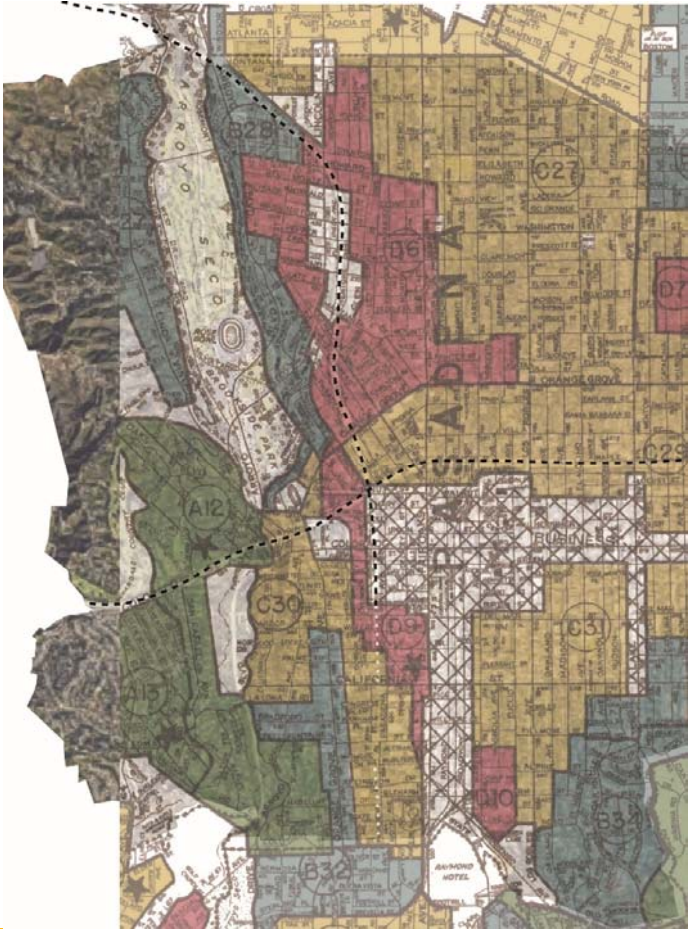
Pasadena's Black Neighborhoods



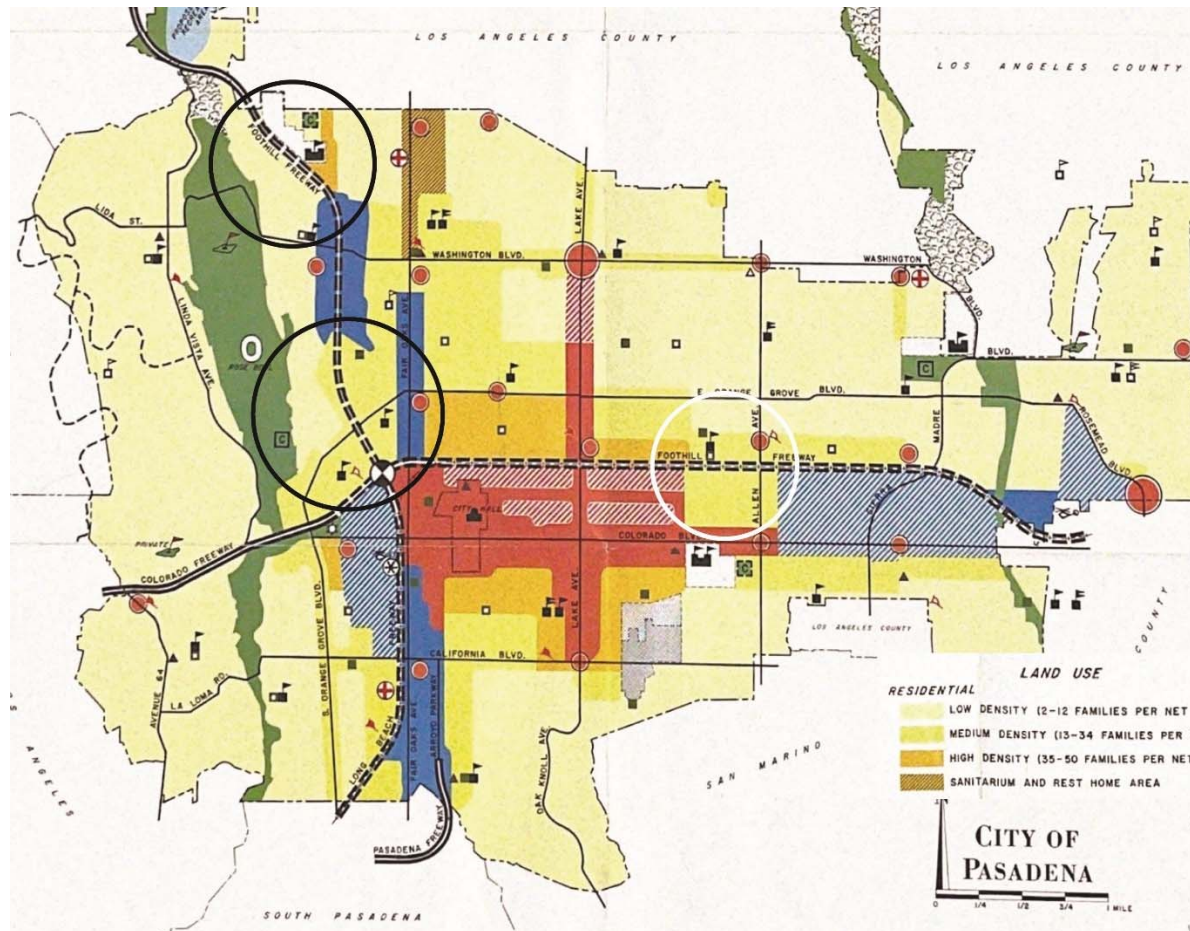
Freeways in the Pasadena Area



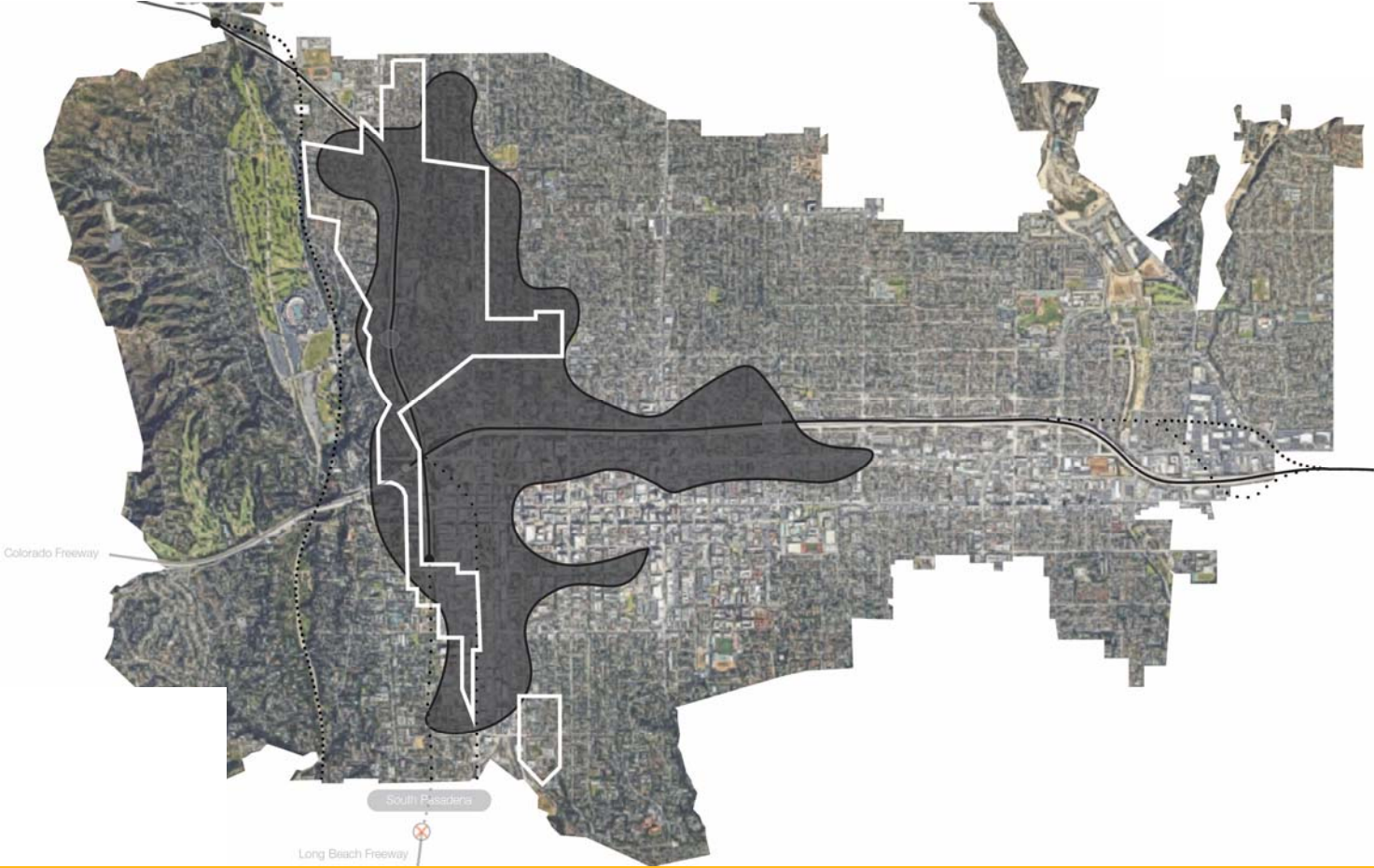
Redlining in Pasadena



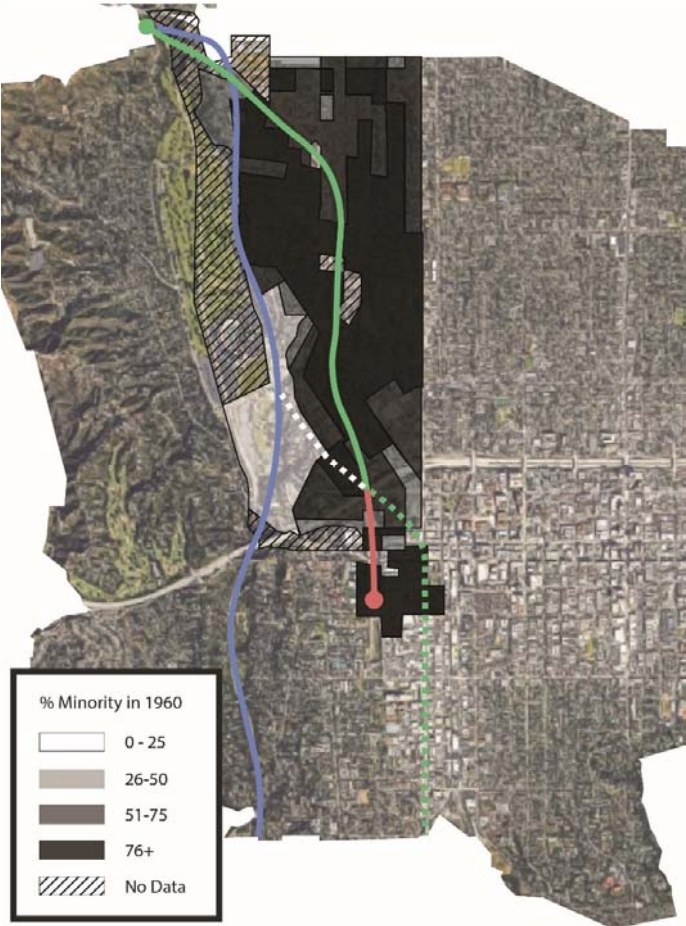
The General Plan Laid the Foundation



Urban Renewal in Pasadena



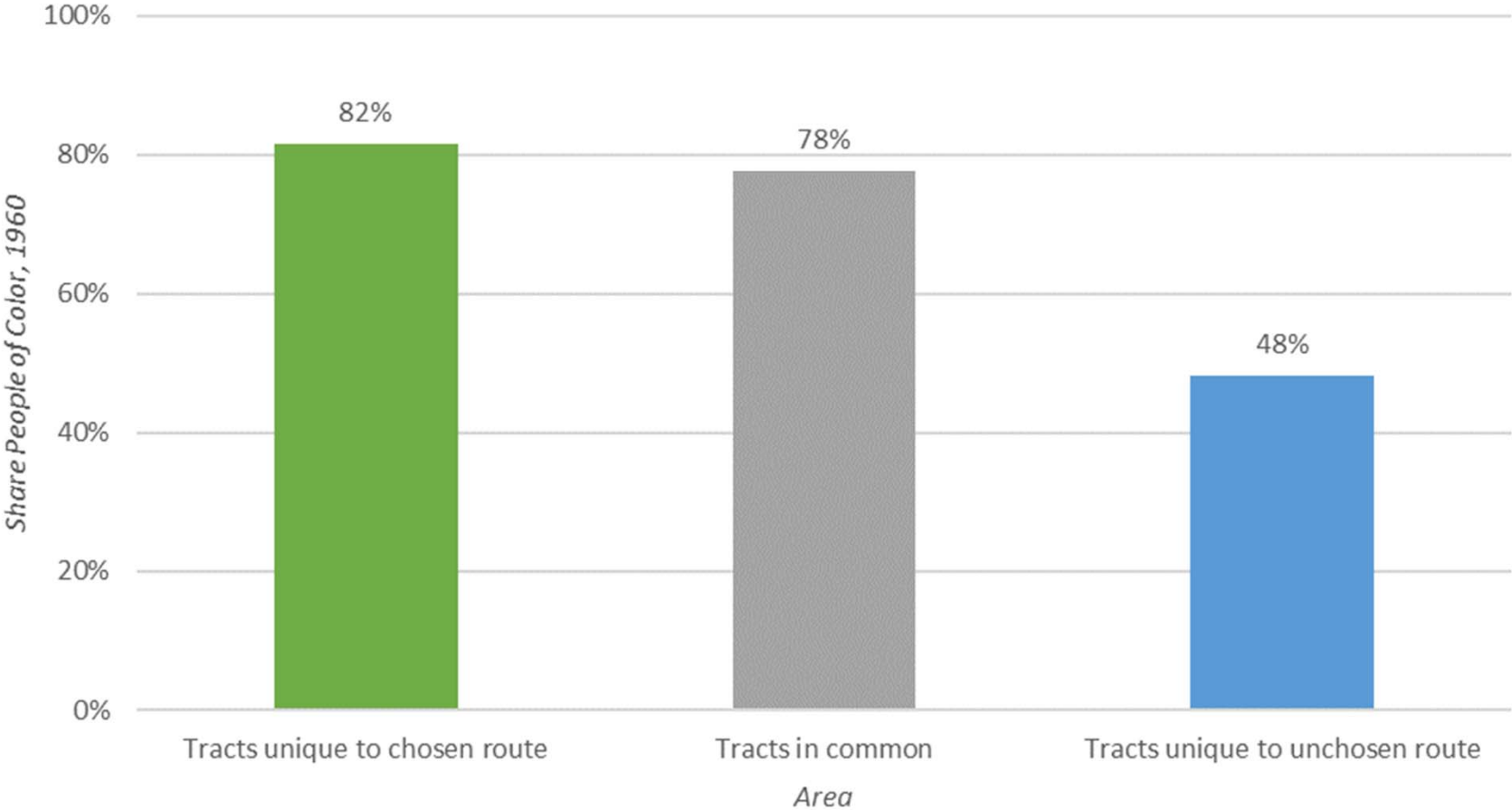
Race and Alternate Routes in Pasadena



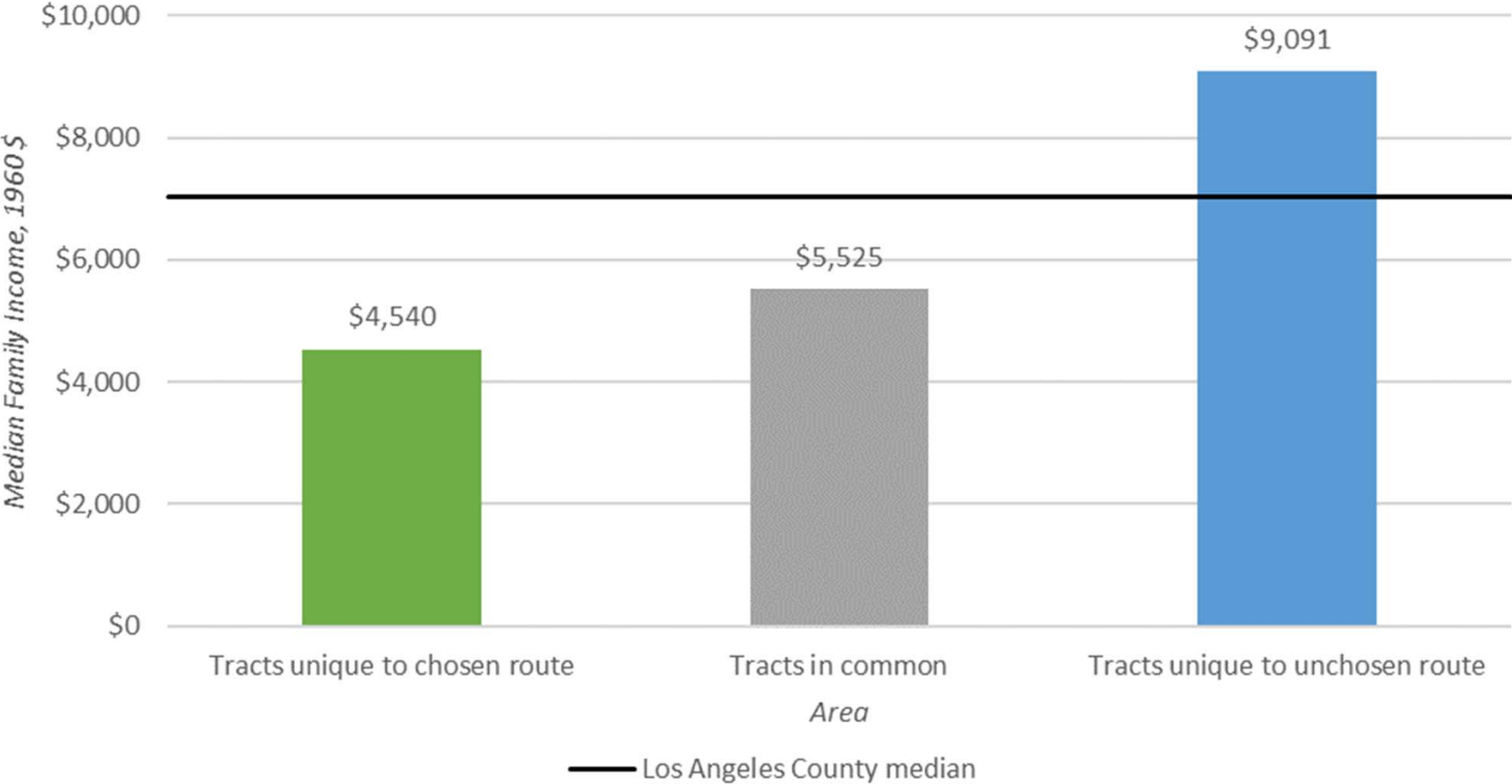
Blue Route through the Arroyo Seco



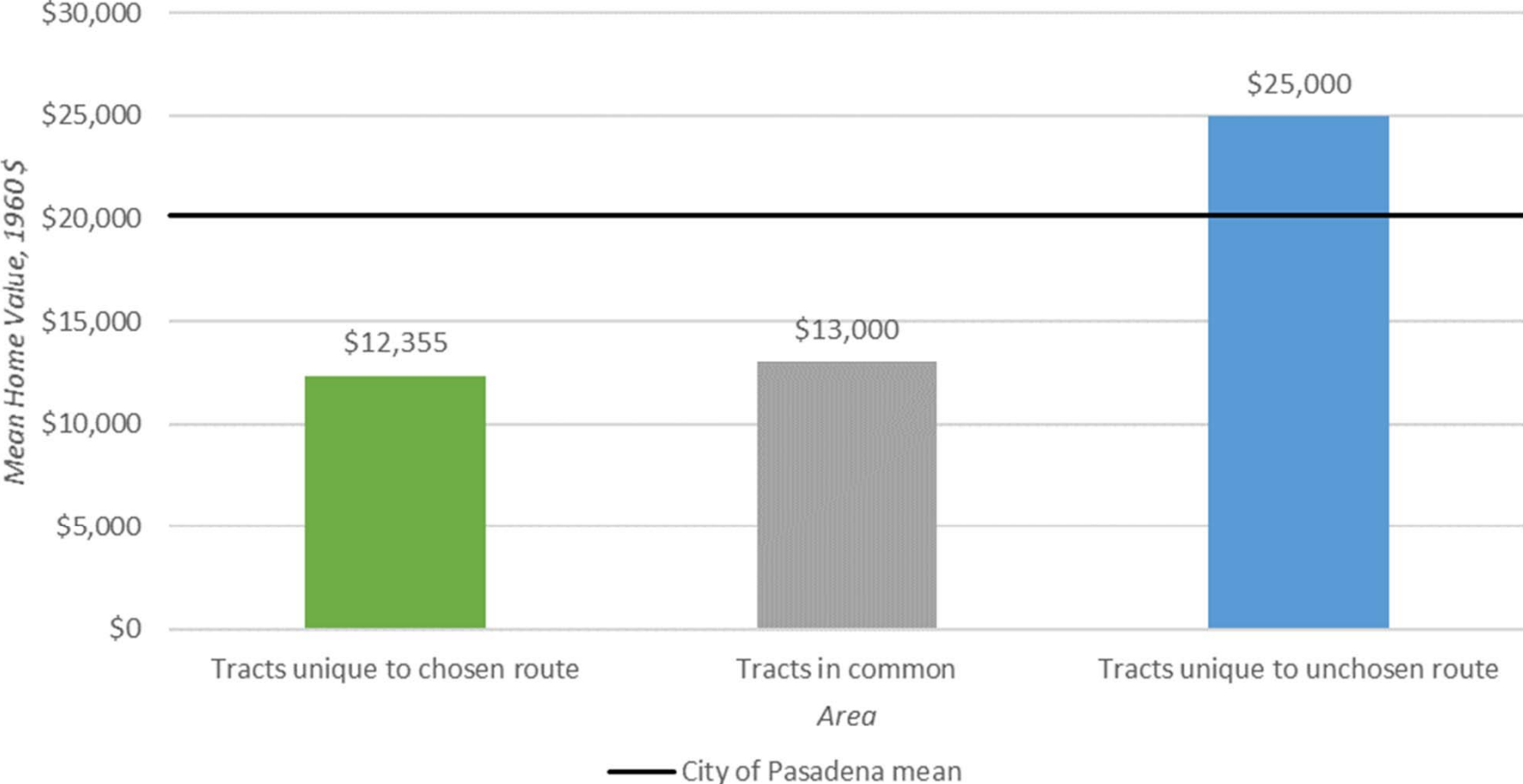
Pasadena Routes Compared: People of Color



Pasadena Routes Compared: Income

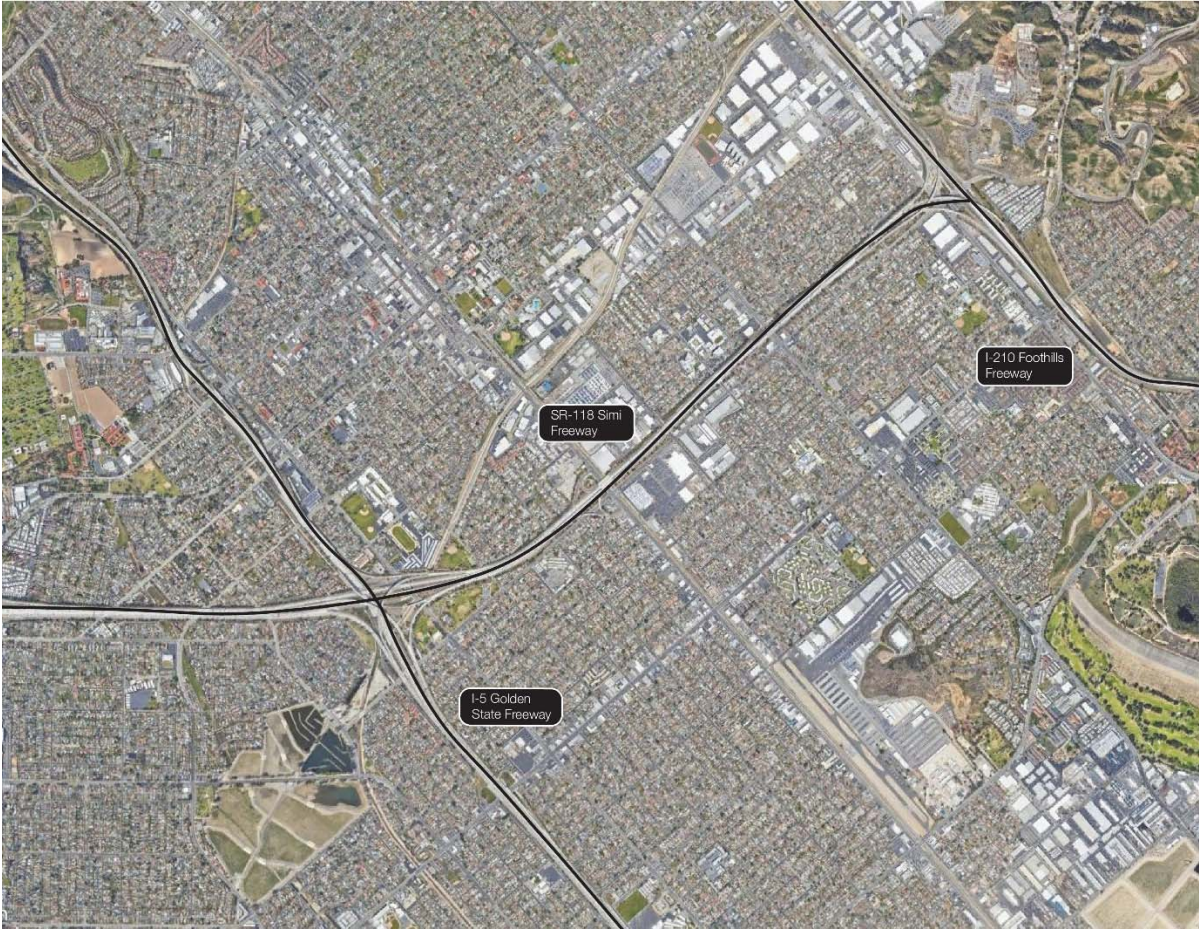


Pasadena Routes Compared: Home Value

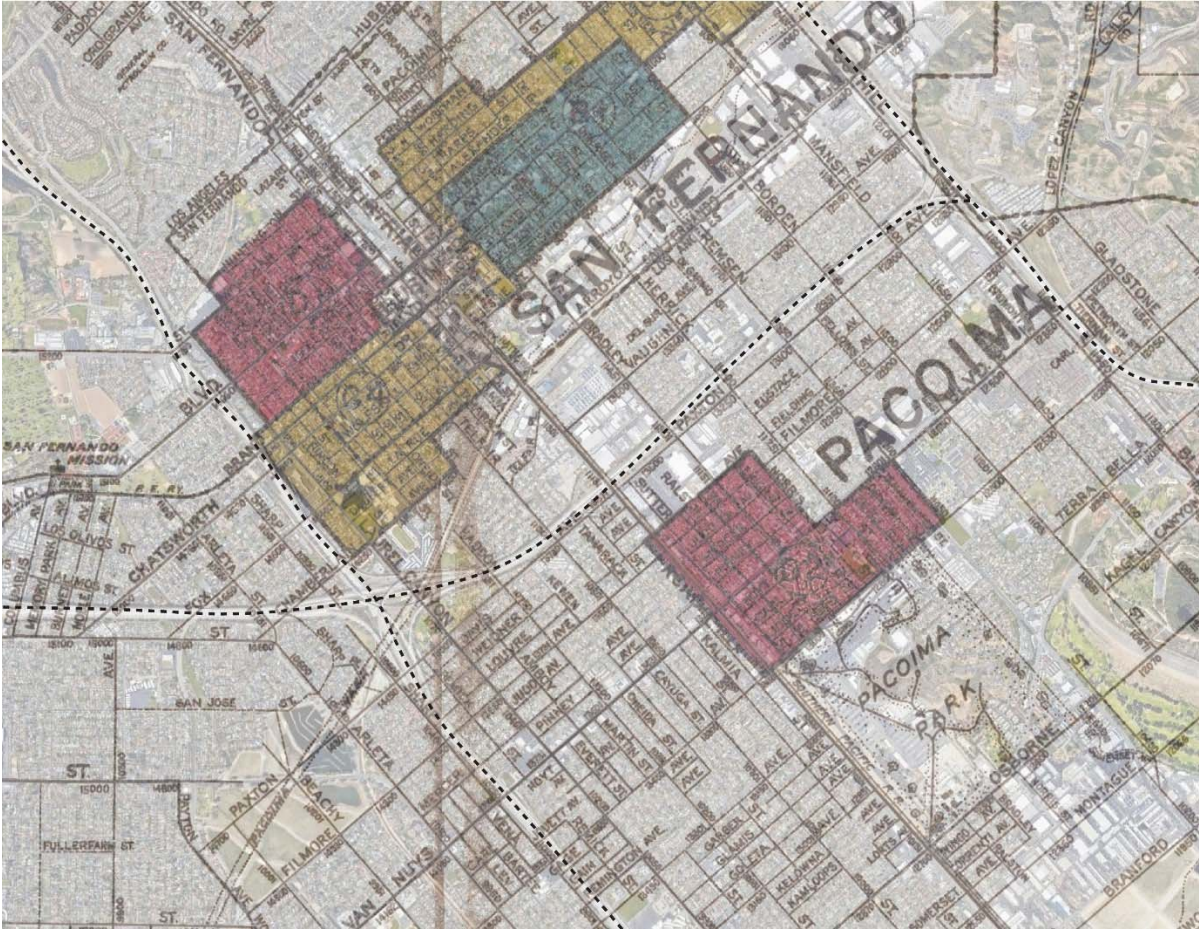


Pacoima

Freeways in Pacoima



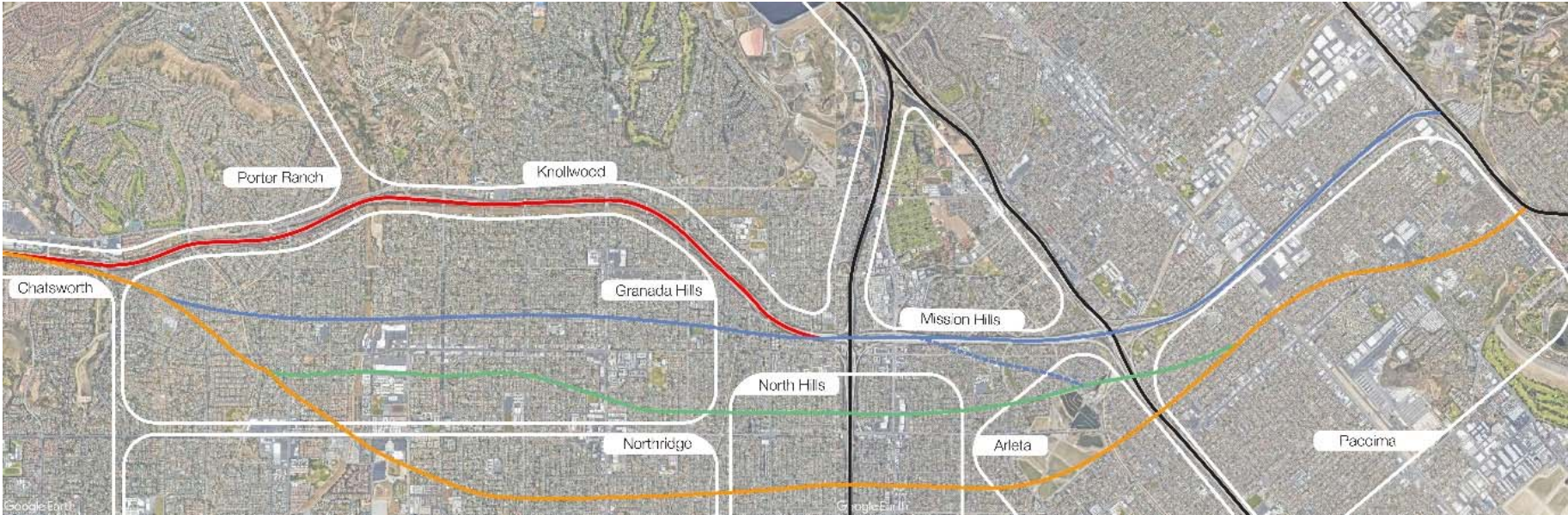
Redlining in Pacoima



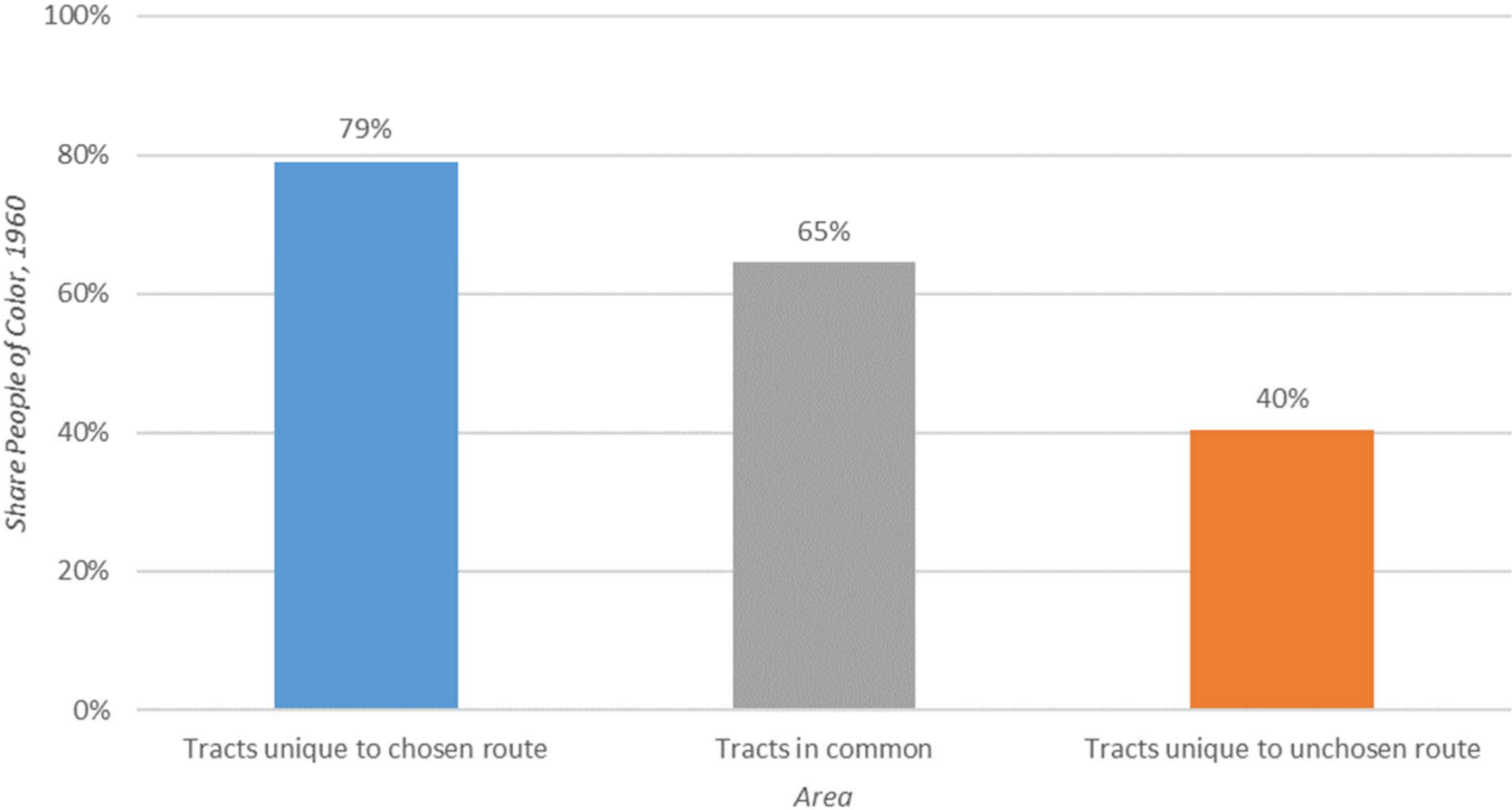
Race and Alternate Routes in Pacoima



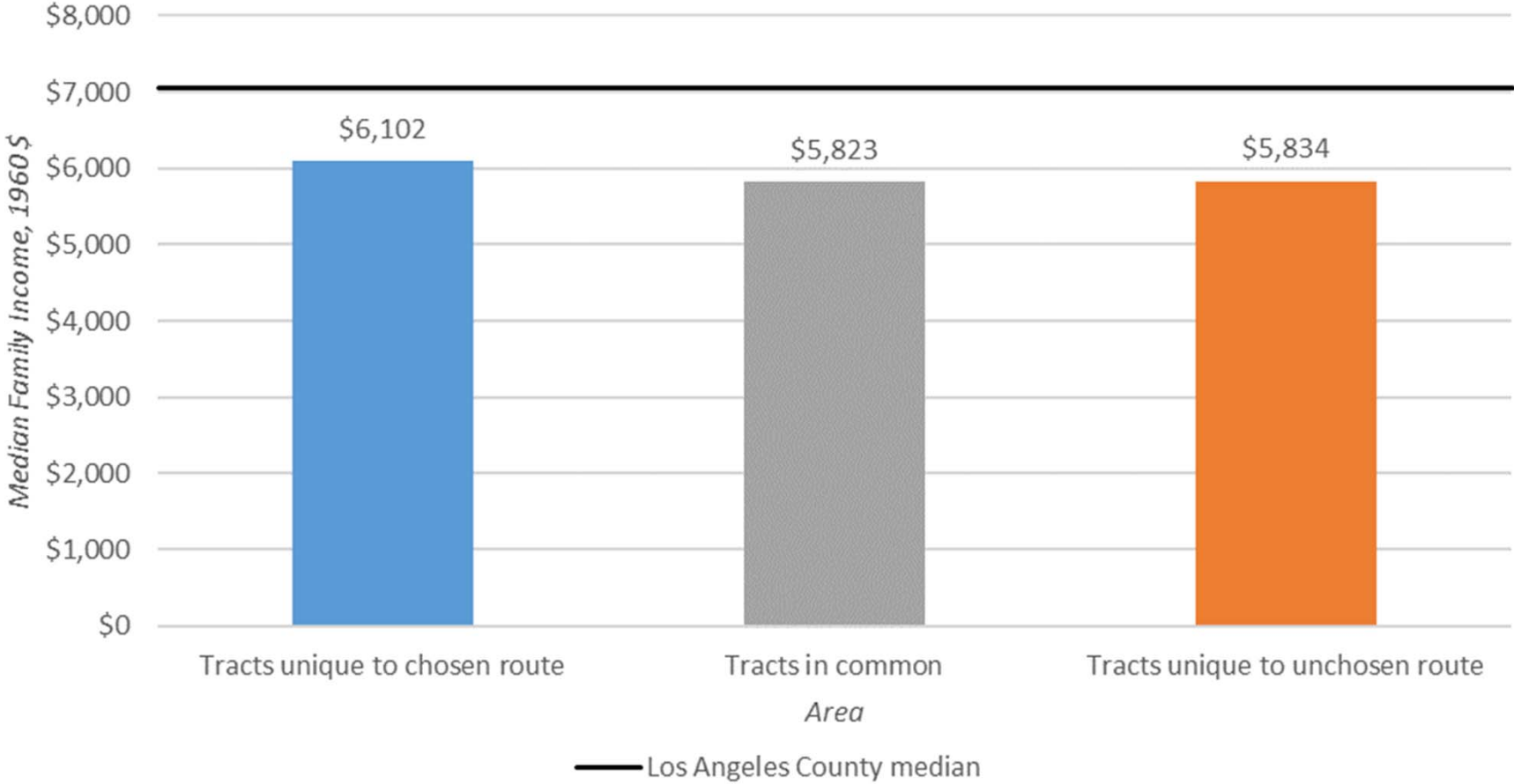
Freeway Alternatives in the North Valley



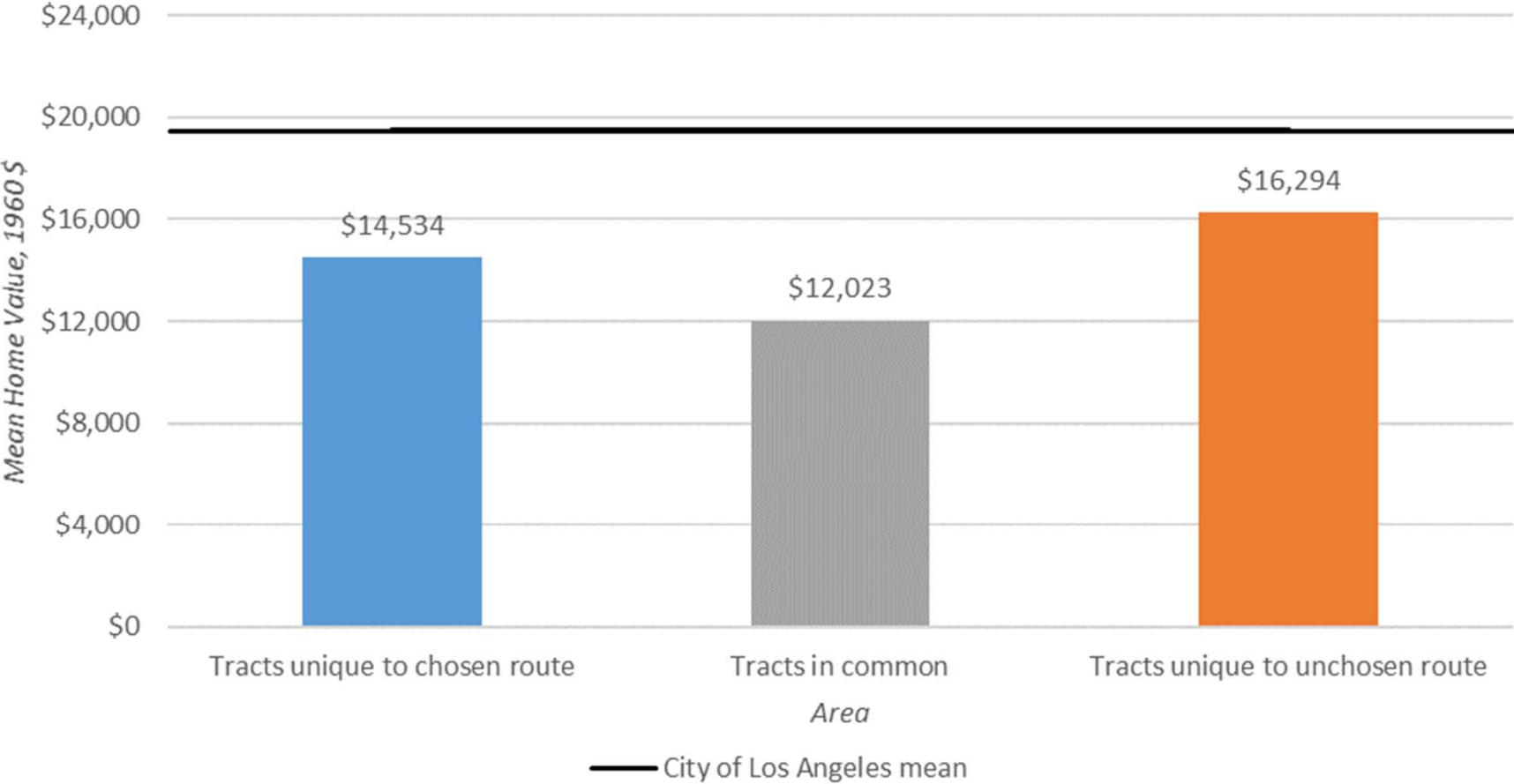
Pacoima Routes Compared: People of Color



Pacoima Routes Compared: Income



Pacoima Routes Compared: Home Value

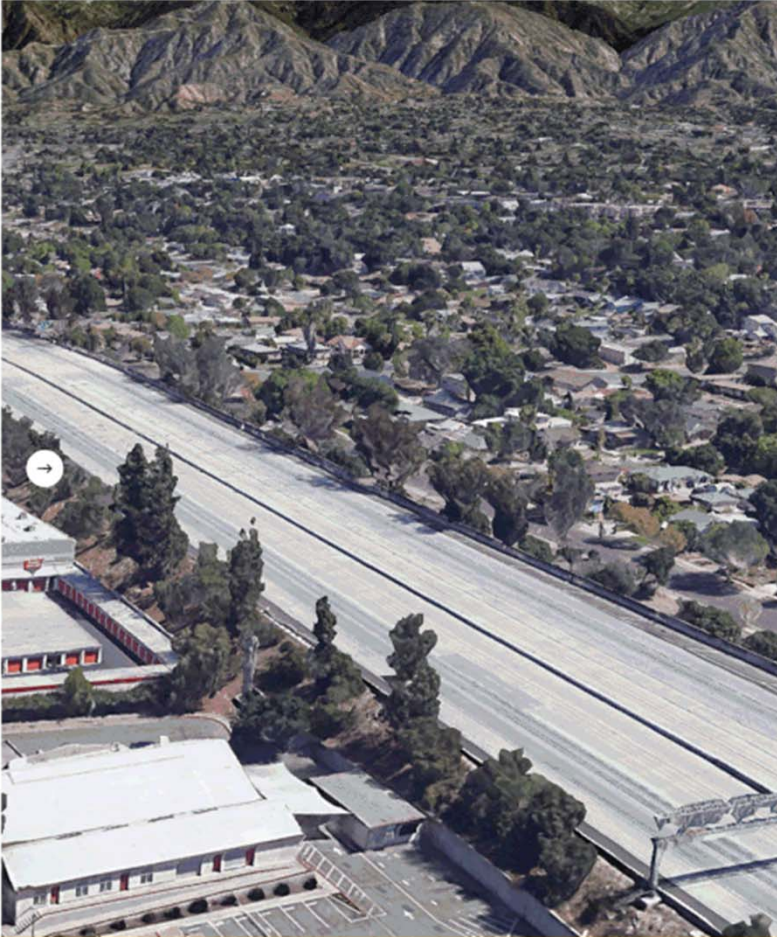
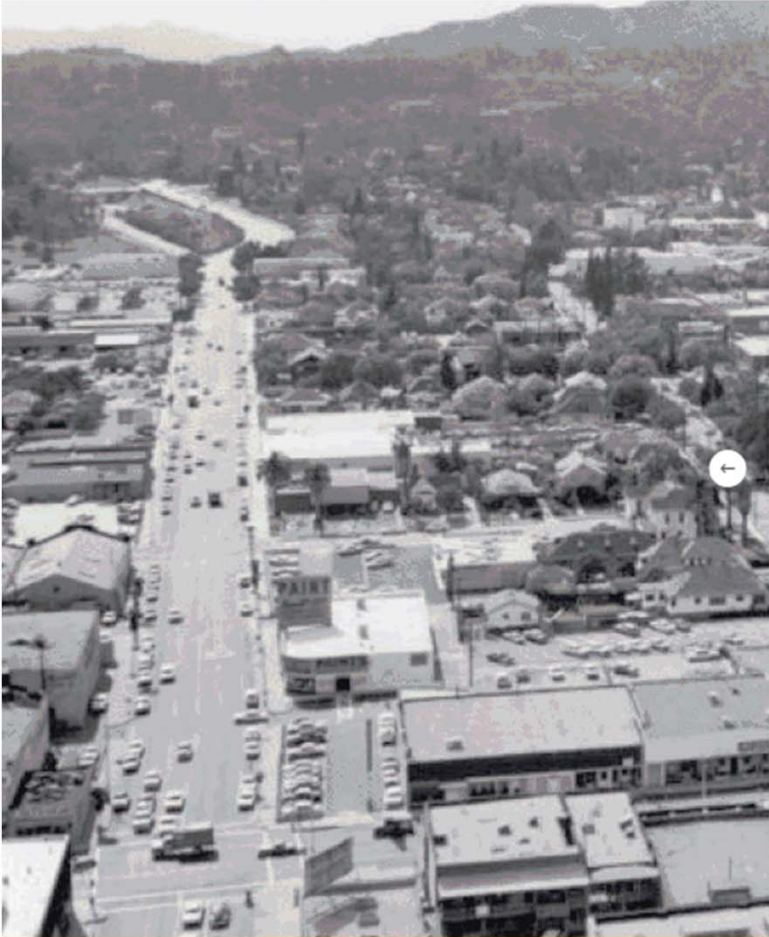


Construction and Legacy

Scenes from Planning Meetings and Protests



Before and After: Pasadena



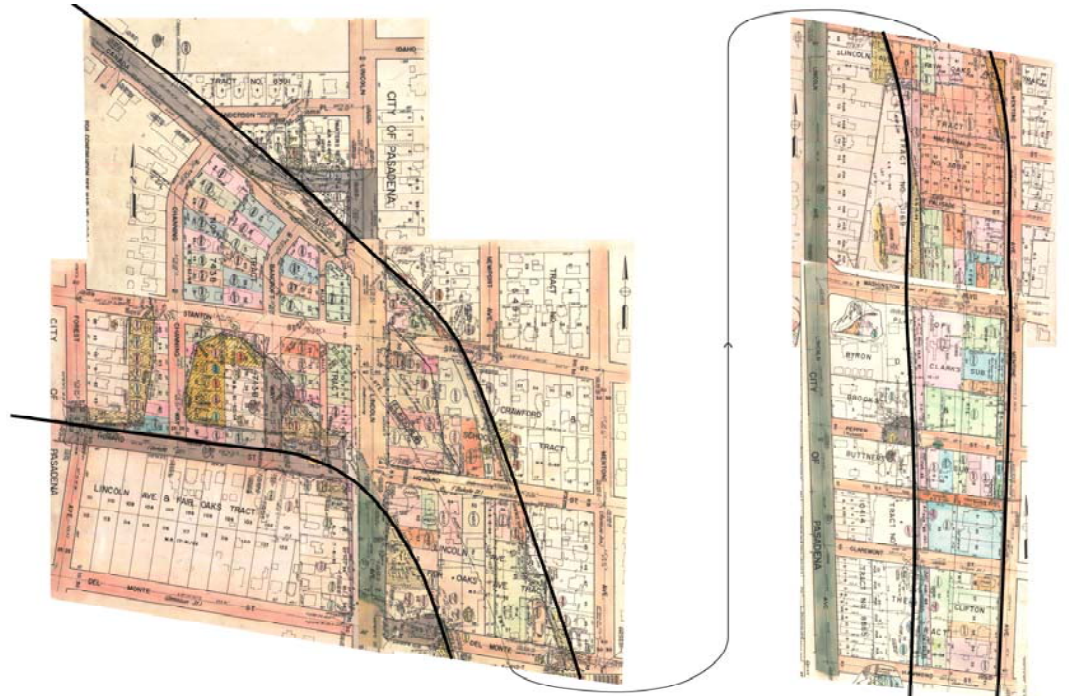
Before and After: Pacoima



Displacement and Segregation

“White residents can find someplace else to live without undue hardship. The Negro is put into a bad position. He can’t go out to the new suburban areas and buy a new home.... The Negro victim of freeway construction will wind up, more often than not, in another restricted area where he will have to pay through the nose for a second-hand home in a community a cut below that in which he formerly lived.”

- Loren Miller,
California Eagle, 1961



Route Alternatives Compared

	Pasadena (Hypothetical Footprints)	
	Chosen Route	Unchosen Route
Population	1,702	221
Housing Units	530	68
Households	500	62
Share, Households of Color	76%	54%

Route Alternatives Compared

	Pasadena (Hypothetical Footprints)		Pacoima (Hypothetical Footprints)	
	Chosen Route	Unchosen Route	Chosen Route	Unchosen Route
Population	1,702	221	720	1,128
Housing Units	530	68	173	227
Households	500	62	159	265
Share, Households of Color	76%	54%	85%	49%

Constructed Freeways Compared

	Pasadena (Actual Footprint)	Pacoima (Actual Footprint)
Population Displaced under Freeway	2,681	841
Housing Units Lost under Freeway	923	252
Share, Households of Color under Freeway	66%	66%

Conclusions

- After immediate demolition and displacement, toxic pollution, noise, economic decline, and stigmatization remained long after.
- These case studies expose flaws in participatory planning processes. In suburban areas, white, affluent interests pushed freeways to more powerless neighborhoods.
- Freeway construction complemented other destructive governmental actions such as urban renewal and discriminatory practices such as redlining.
- Freeways and suburbanization were key in separating neighborhoods of color from job centers and fueling a decline in available transportation options to overcome that mismatch.
- Understanding the history of racism in freeway development can inform restorative justice.

Restorative Justice

“Freeways benefit an entire city, and it seems to me the social, as well as financial, cost ought to be borne by all who benefit....I don’t think it’s fair to require the condemned man to pay for the hangman’s rope.”

- Loren Miller,
California Eagle, 1961

Research Team



**Anastasia
Loukaitou-
Sideris**
PI



**Paul M.
Ong**
Co-PI



**Jacob L.
Wasserman**
Project
Manager



**Chhandara
Pech**
Staff
Researcher



**Andres F.
Ramirez**
Graduate
Researcher



**Emmanuel
Prousaloglou**
Graduate
Researcher



**Abigail
Fitzgibbon**
Student
Researcher

Thank You

UCLA

Institute of
Transportation Studies

Jacob Wasserman

jacobwasserman@ucla.edu

(424)-287-7424

Research Project Manager
UCLA Institute of Transportation Studies

Research report and brief:

The Implications of Freeway Siting in California

its.ucla.edu/project/the-implications-of-freeway-siting-in-california/

Interactive storymap:

Freeways, Redlining, and Racism

its.ucla.edu/portfolio-items/freeways-redlining-racism-storymap/

Find research reports and policy briefs at www.its.ucla.edu

Transportation finance, public transit, and innovative mobility

SCAG Equity Working Group

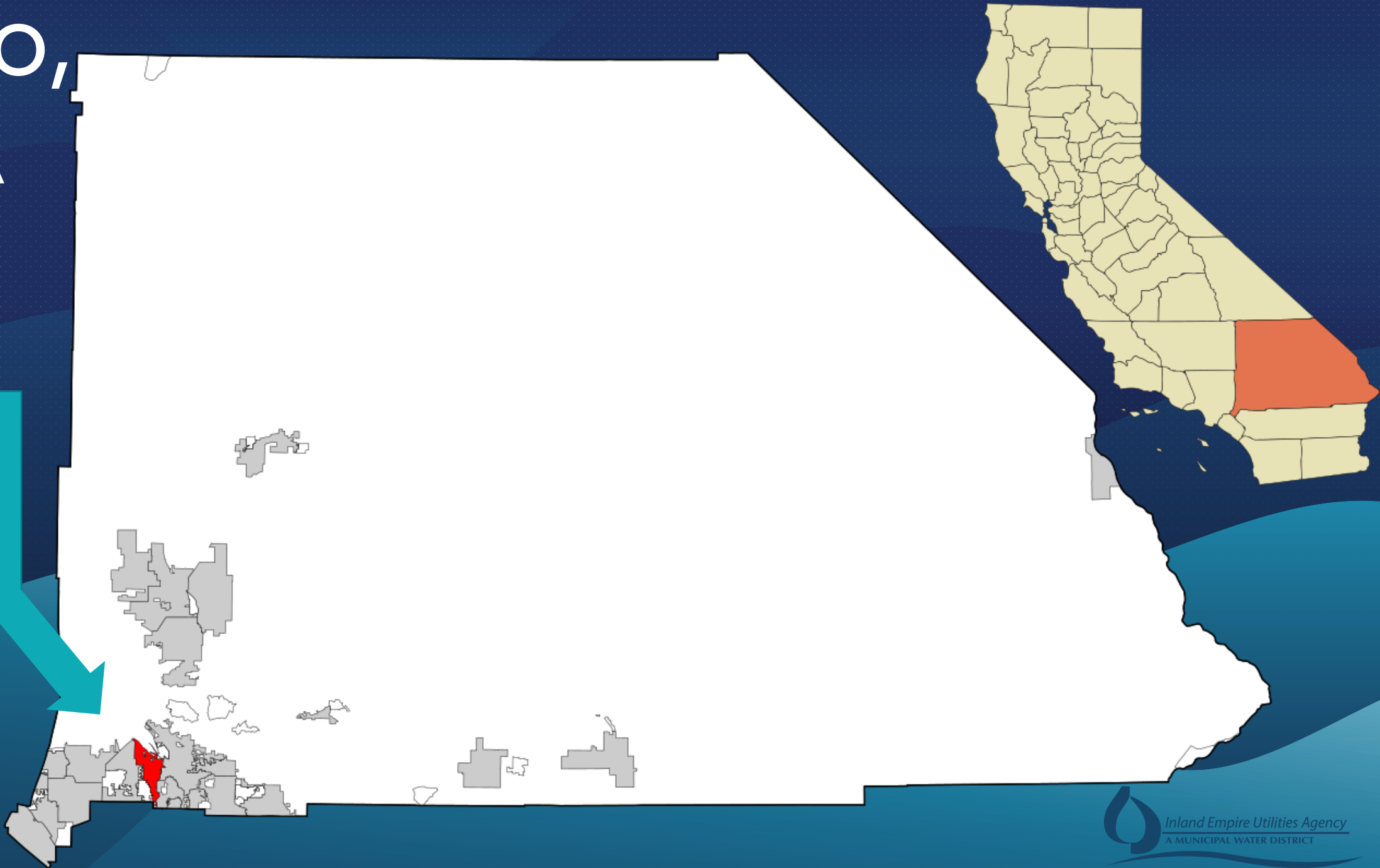
Thomas Crowley, Utilities Manager, City of Rialto
Elizabeth Hurst, Chino Basin Program Manager, IEUA

City of Rialto & Inland Empire Utilities Agency (IEUA) Recycled Water Collaboration

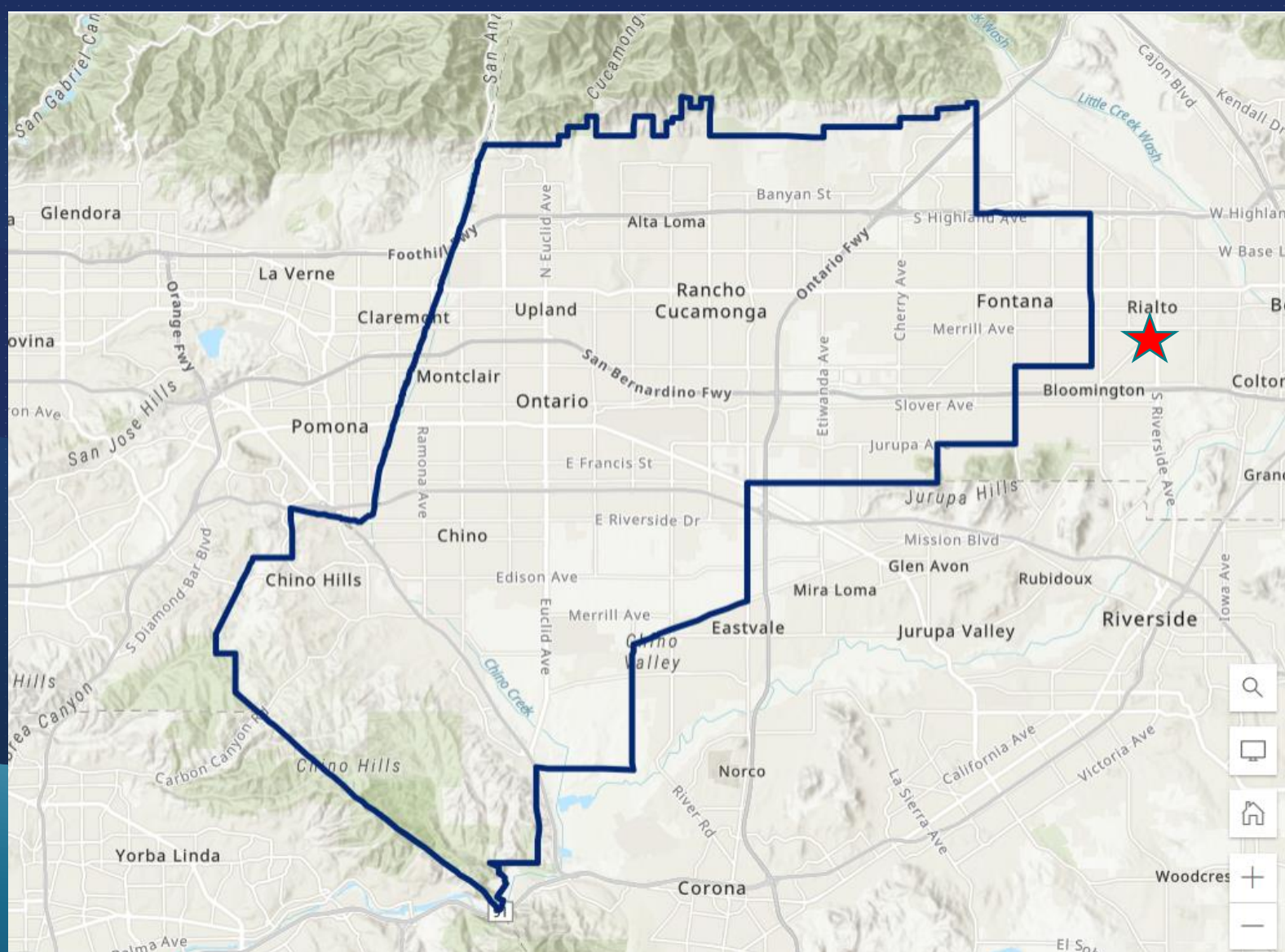


Rialto, CA

Location of
Rialto in San
Bernardino
County,
California



IEUA Service Area



Rialto, CA | Inland Empire Utilities Agency Demographics

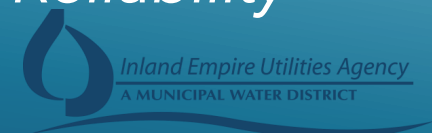
RIALTO

- INCORPORATED IN 1911
- WATER RETAILER
- 12,000+ WATER CONNECTIONS
- 26,000+ WASTEWATER CONNECTIONS

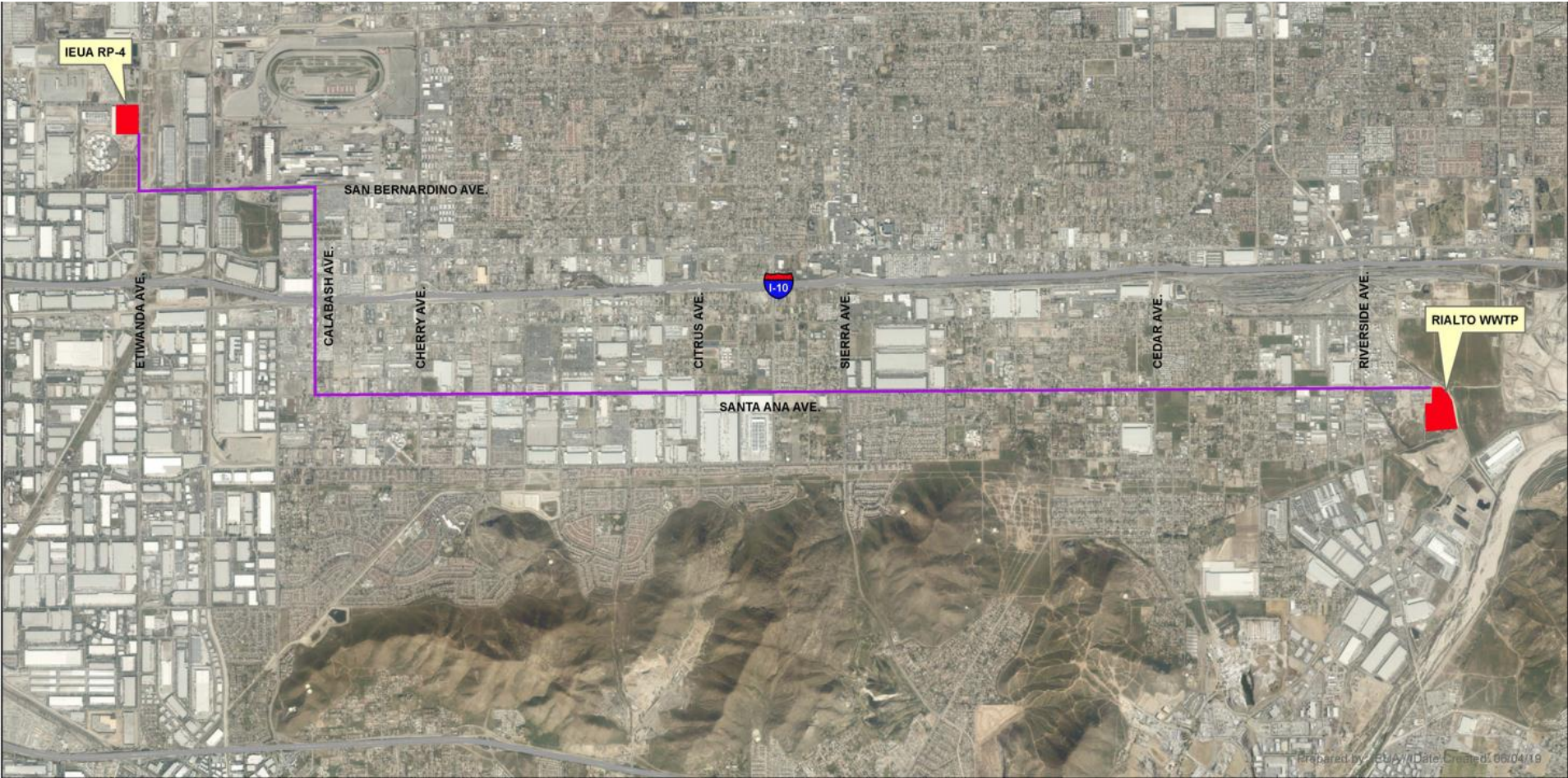
INLAND EMPIRE UTILITIES AGENCY

- (IEUA)
- INCORPORATED IN 1950
- ~935,000 PEOPLE SERVED IN REGIONAL WASTEWATER TREATMENT & WHOLESALE WATER

IEUA Collaborates with the City of Rialto to Purchase Recycled Water
The water Purchase Agreement will increase Local Supply Reliability



Starting in February 2022, Rialto/IEUA signed a water partnership that will allow Rialto to sell a portion of the city's unused recycled water supply to IEUA for a proposed term of 50 years.



Inland Empire Utilities Agency
CITY OF RIALTO RECYCLED WATER INTERTIE



Agreement Terms

- **IEUA** to design, construct, and operate recycled water facilities with 7,000-acre-foot capacity (i.e., 24" pipeline, pump station, telemetry, interconnection).
- **IEUA** to have exclusive rights to divert 3,500 acre-feet of **Rialto's** recycled water into the **IEUA** system between May and October annually.
- The purchase rate of \$275 per acre-foot is established for a period of **50 years**.
- **IEUA** and its partnering agencies have the right of first purchase for the remaining six months or future expanded flows at \$400 per acre-feet.
- The rates are subject to an annual rate adjustment of 2% or the CPI index, whichever is higher.



Program Benefits

- Develops new, drought proof local water supply and increases regional resiliency to climate change
- Purchase offsets economically disadvantaged Rialto water/sewer rates by \$962,500 annually
- Protects federally identified endangered species
- Works to restore native habitat in the Santa Ana Watershed
- Compatibility with the Upper Santa Ana River Habitat Conservation Plan



Thank you!

Tom Crowley, Utilities Manager, City of Rialto

tjcrowley@rialtoca.gov

(909) 820-8056

Elizabeth Hurst, Chino Basin Program Manager, IEUA

ehurst@ieua.org

(909) 993-1634





Climate Equity Compendium

July 20, 2023

WWW.SCAG.CA.GOV

Background

The goal of the Climate Equity Compendium was to create a central resource for information that jurisdictions need to center climate equity in their planning processes.

Climate equity is defined as **recognizing and addressing the unequal burdens made worse by climate change, while ensuring that all people share the benefits of climate protection efforts** (Environmental Protection Agency).

Slide 2

- AEO**
- statistics on climate equity (how people of color are disproportionately impacted)
 - shift compendium intro to talking points, keep goal
 - keep climate equity definition (cite EPA)

Annaleigh Ekman, 2023-07-11T15:02:49.373

Background

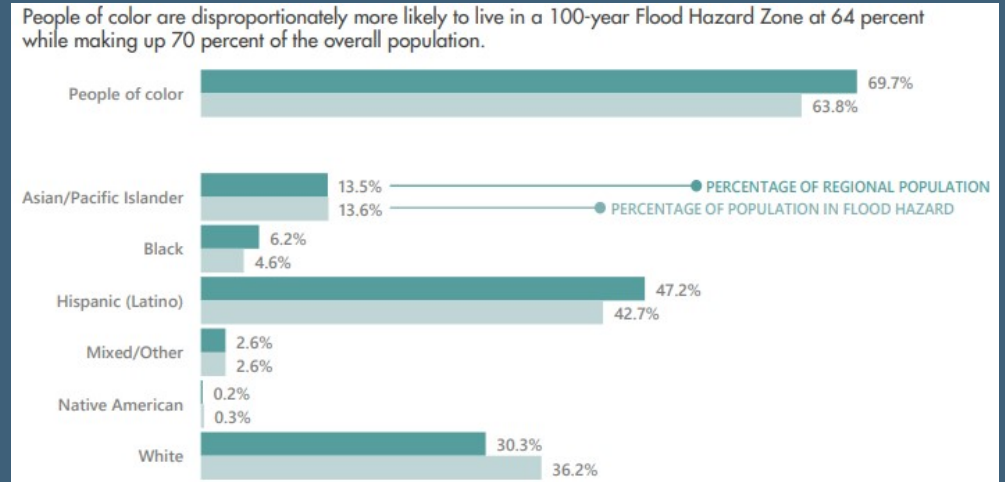
- People of color are disproportionately impacted by the consequences of climate change

Tree Canopy Coverage

	PERCENTAGE OF TREE CANOPY COVER
Census tracts with majority people of color	2.40%
Census tracts with majority White residents	6.90%
All census tracts in SCAG region	1.60%

Source: Southern California Association of Governments (SCAG), 2020

Flood Hazard Zone



Charts from [SCAG's Racial Equity Baseline Conditions Report \(2022\)](#)

Timeline

Outreach
December '22 –
March '23

- Developed a focus
- Surveyed jurisdictions
- Completed interviews

Research
March '23 – April '23

- Researched focus areas
- Consolidated info from jurisdictions

Outline
May '23

- Organized research
- Filled in gaps

Writing
May '23 – July '23

- Put outline into writing
- Several drafts based on feedback

Review
July '23 – Fall '23

- Multiple rounds of review
- Final product will be posted on SCAG website

Slide 4

AE0 Slightly blurry--any way to make clearer? Saved as PNG?
Annaleigh Ekman, 2023-07-11T15:04:57.959

AA0 0 This can probably be recreated within Powerpoint
Anita Au, 2023-07-12T04:29:37.108

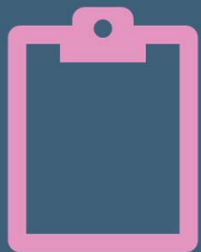


OUTREACH

Outreach Process

- Utilized a google survey to field responses distributed via e-mail
- Prioritized outreach to cities with larger number of SB 535 Disadvantaged Communities
- Contacts attained through online research, phone calls, and SCAG connections
- Follow ups every 6 weeks

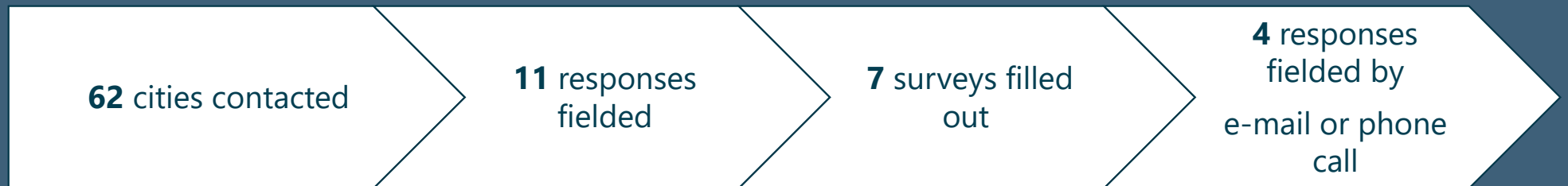
AE1



Slide 6

- AE0** Consider adding a screenshot of the survey to add visual interest
Annaleigh Ekman, 2023-07-11T15:07:28.489
- AA0 0** This slide could benefit with some icons depicting a survey, interviews, emails, etc. (added some icons on the slide for you to play around with)
Anita Au, 2023-07-12T04:31:18.460
- AE1** I moved/combined some language -- add a point on interviews and another on frequency of follow ups
Annaleigh Ekman, 2023-07-11T15:10:31.241

Outreach Statistics



Slide 7

AE0 Not sure about this chart -- maybe replace with map or table of locations that responded (including non-survey responses)

Annaleigh Ekman, 2023-07-11T15:40:05.038

AA0 0 Or use more icons here 🙄

Anita Au, 2023-07-12T04:34:30.637

Survey Responses

- Funding and staff capacity
- Access to data and useful tools
- Model policies and best practices
- Law compliance assistance

Slide 8

AE0 Change "shortcomings" -- capacity?
Annaleigh Ekman, 2023-07-11T15:40:49.225

AE1 Add visual interest -- even if it's just an icon or smartart formatting
Annaleigh Ekman, 2023-07-11T15:41:45.848

AA1 0 Added a smartart example for you to play with
Anita Au, 2023-07-12T04:36:42.207



REPORT

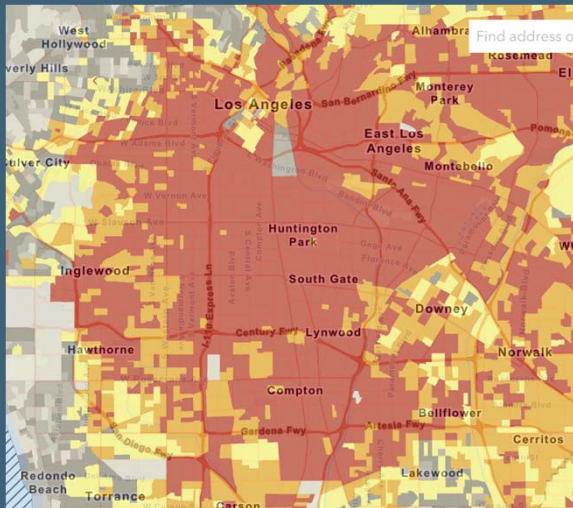
AA0

Slide 9

AA0 Suggest remaining to "Report" or "Drafting Report"
Anita Au, 2023-07-12T04:37:27.581

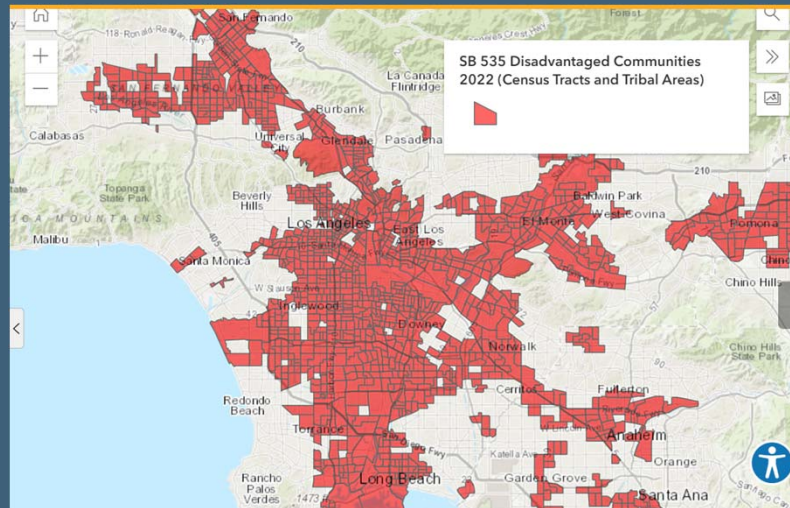
Data Resources

Federal



EJScreen

State



CalEnviroScreen Disadvantaged Communities Map

SCAG



SCAG Regional Data Platform

Slide 10

AA0 I recommend naming this slide Data Resources then labeling each image (federal, state, SCAG)
Anita Au, 2023-07-12T04:38:58.116

California Climate Equity Legislation

- Guidance on State Level Climate Legislation
 - AB 32, SB 375, SB 535, SB 1000, SB 379
- Funding
 - EO 14008 & Justice40
 - Inflation Reduction Act
 - California Strategic Growth Council



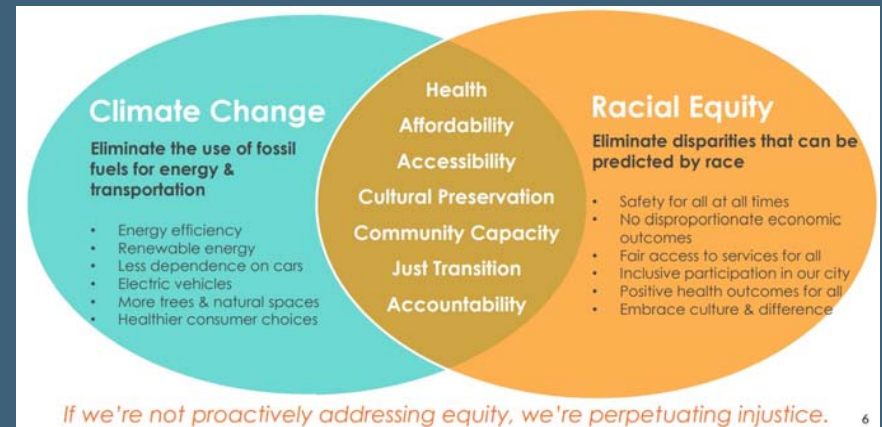
Slide 11

AA0 This slide should be titled California Climate Equity Legislation. And remove "Defining Climate Equity" because that's part of the implementation section.

Anita Au, 2023-07-12T04:41:08.967

Defining Climate Equity

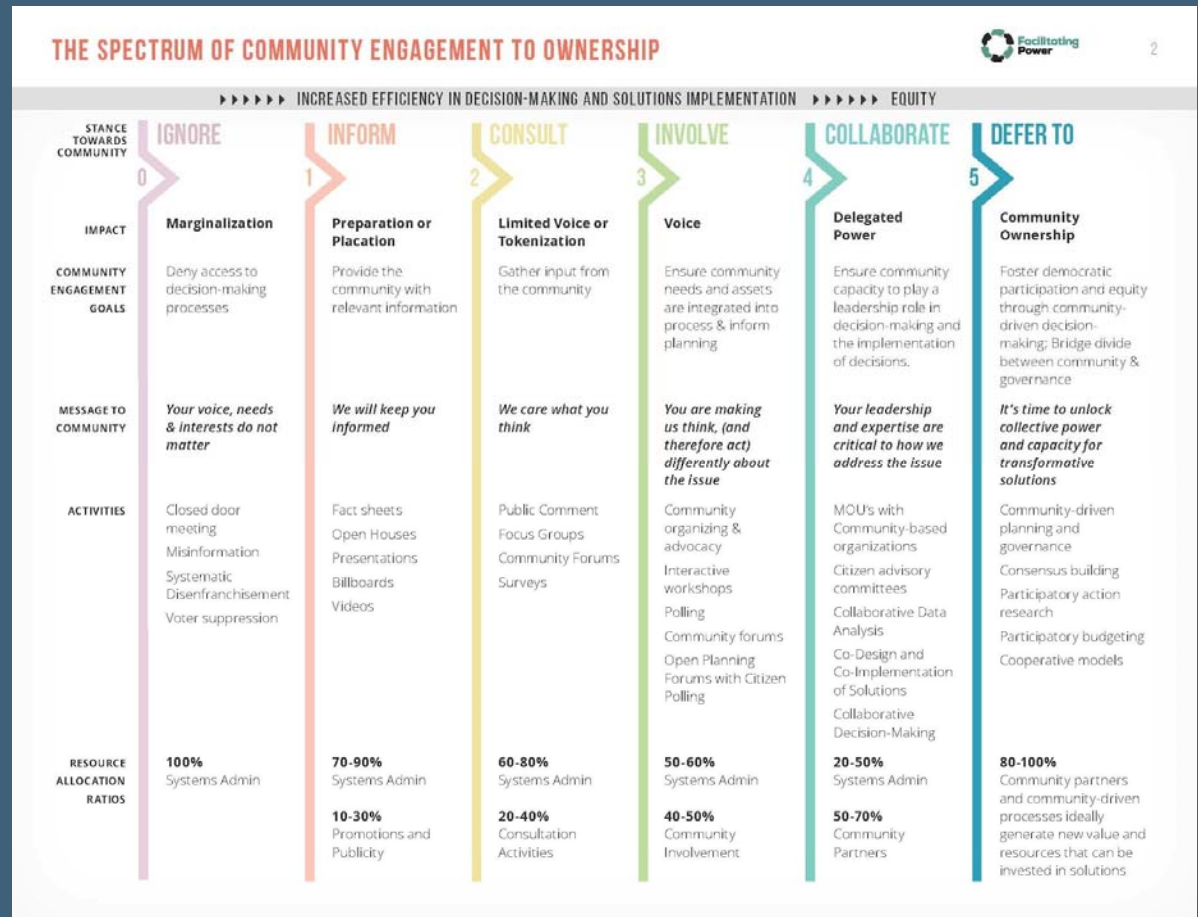
- Understand the region's history, baseline conditions, and environmental landscape
- Acknowledging troublesome historical policies and their impacts
- Work with local community-based organizations



City of Austin Climate Equity Tool

Outreach

- CE2O Spectrum
 - Community Engagement to Ownership by [Facilitating Power](#)
- Best Practices



Model Policies

- EJ Element
 - California Environmental Justice Alliance SB 1000 Toolkit
- Climate Action Plan
 - Institute for Local Government Local Examples
 - City of Santa Monica Climate Action and Adaptation Plan
 - Gateway Cities Council of Governments Climate Adaptation Model General Plan Language Guide
- Vulnerability Assessment
 - SoCal Adaptation Planning Guide
- SCAG Toolbox for Healthy Cities





NEXT STEPS

Next Steps

- Finalizing the Compendium
- Expected to be available Fall 2023
- SCAG continues to be available for technical assistance and fund programs that encourage climate equity in the region





THANK YOU!

THE 2024 REGIONAL TRANSPORTATION PLAN/SUSTAINABLE COMMUNITIES STRATEGY
OF THE SOUTHERN CALIFORNIA ASSOCIATION OF GOVERNMENTS



Leslie Cayton
Equity Working Group
July 18, 2023



Outreach Summary

Spring 2023

Outreach Activities

- **20** in-person workshops
- **7** virtual workshops
- **20** Pop-Up and Street Team Engagements
- **15** Community Partners
- Regionwide advertising campaign
- Resulting in over **3,600** surveys collected



Slide 3

SD0 Here's an alternative approach to reduce slides

Sarah Dominguez, 2023-06-22T20:23:38.288

AV1 seems duplicative -- suggest keeping the number of slides but breaking down the information. 1) Outcome: what as collected. 2) Activity: How it was collected

Ana Vallianatos, 2023-06-22T21:40:46.717

What We Heard: Survey



*When you think about the **challenges** our region faces, please choose three (3) that are most important to you.*

**Shortage of affordable
and diverse housing
options (51%)**

**Limited reliable travel
options besides driving to
everyday destinations (37%)**

**Climate change impacts
(33%)**

Slide 4

AV0 think we need a chapter stop slide before getting into the feedback. just to help change gears, tee up the input to better resonate.

Ana Vallianatos, 2023-06-22T21:43:51.783

AV0 0 also think it's helpful for talking points to convey the volume of this input v volume for CBO input v meeting comments

Ana Vallianatos, 2023-06-22T21:44:52.082

What We Heard: Survey



*When you **envision our region in 2050**, which three (3) choices best describes what you'd like to see?*

**Healthy for all people
to live in (53%)**

**Prosperous, with
economic opportunity
for all residents (46%)**

**Safe for all modes of
travel (39%)**

What We Heard: Community Partnerships



Limited transportation options and the housing affordability affect quality of life, particularly in historically disinvested areas.

Infrastructure improvements should be coupled with direct benefits and protections for residents/small businesses at risk of displacement.

Desire for continued engagement with community partners on Connect SoCal implementation including updates on strategies and performance metrics.



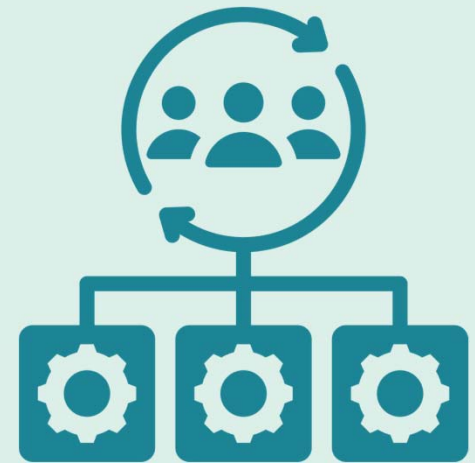
Policy Framework

July 2023 Update

Policy Development Framework Background



- First adopted by the Regional Council on June 2, 2022
- Documented draft vision and goals
- Outlined policy priorities from Connect SoCal 2020, recent Regional Council actions, and emerging issues
- Established the special subcommittees
- **Regional Council adopted the updated Policy Framework with Regional Planning Policies on July 6, 2023**



What is included in the Regional Planning Policies?

- Priorities established with the *Core Vision* of Connect SoCal 2020
- Policy direction from SCAG's Policy Committees since 2020 and recommendations from Connect SoCal 2024 special subcommittees

What is the purpose?

- Articulate broad and established regional policies to achieve goals and realize the regional vision of Connect SoCal 2024
- Provide a resource for transportation agencies or local jurisdictions to demonstrate alignment with RTP/SCS when seeking funding from state or federal programs

Updated Draft Vision & Goals

Draft Vision: A healthy, accessible, and connected region for a more resilient and equitable future.

1. Build and maintain a robust transportation network. (MOBILITY)
2. Develop, connect, and sustain communities that are livable and thriving. (COMMUNITIES)
3. Create a healthy region for the people of today and tomorrow. (ENVIRONMENT)
4. Support a sustainable, efficient, and productive regional economic environment that provides opportunities for all. (ECONOMY)



Updated Draft Vision & Goals

Draft Vision: A healthy, prosperous, accessible and connected region for a more resilient and equitable future.

1. Build and maintain a robust transportation network. (MOBILITY)
2. Develop, connect, and sustain communities that are livable and thriving. (COMMUNITIES)
3. Create a healthy region for the people of today and tomorrow. (ENVIRONMENT)
4. Support a sustainable, efficient, and productive regional economic environment that provides opportunities for all. (ECONOMY)



Updated Draft Vision & Goals

Draft Vision: A healthy, prosperous, accessible and connected region for a more resilient and equitable future.

3. Create a healthy region for the people of today and tomorrow.
(ENVIRONMENT)

- Develop communities that are resilient and can mitigate, adapt to, and respond to chronic acute stressors and disruptors such as climate change.
- Integrate the region's development pattern and transportation network to improve air quality, reduce greenhouse gas emissions **and enable more sustainable use of energy and water.**
- Conserve the restore the region's natural agricultural resources.



Policy Categories by Goal

MOBILITY

- System Preservation
- Complete Streets
- Transit & Multimodal Integration
- Transportation Demand Management
- Transportation System Management
- Technology Integration*
- Safety
- Funding the System/User Fees

COMMUNITIES

- 15 Minute Communities *
- Housing the Region *
- Priority Development Areas
- **Equitable Engagement & Decision-Making***

**New policy area for Connect SoCal 2024*

ENVIRONMENT

- Sustainable Development
- Air Quality & Clean Technology
- Natural & Working Lands Preservation
- **Climate Resilience***

ECONOMY

- Goods Movement
- **Broadband ***
- Universal Basic Mobility*
- Workforce Development*
- Tourism

Slide 13

LACO [[@Annaleigh Ekman](#)] I'm finishing up these slides, but I wanted to get your opinion on the top 3-5 policy areas (and regional planning policies in following slides) that would be of interest to the EWG. I bolded the ones that might be relevant, but need help paring it down. Any input is greatly appreciated!

Leslie A. Cayton, 2023-07-19T18:03:30.264

Communities Examples

Draft Regional Planning Policies



- **Housing the Region:** Encourage housing development in areas with access to important resources (economic, educational, health, social, and similar) and amenities to further fair housing access and equity across the region.
- **Equitable Engagement and Decision-Making:** Advance community-centered interventions, resources, and programming that serve the most disadvantaged communities and people in the region, like Priority Equity Communities, with strategies that can be implemented in the short-to-long-term.

Environment Example

Draft Regional Planning Policies



- **Climate Resilience:** Prioritize the most vulnerable populations and communities subject to climate hazards to help the people, places, and infrastructure that are most at risk for climate change impacts, recognizing that disadvantaged communities are often overburdened.

Economy Examples

Draft Regional Planning Policies



- **Broadband:** Support ubiquitous regional broadband deployment and access, to provide the necessary infrastructure and capability for Smart Cities strategies and to ensure that the benefits of these strategies improve safety and are distributed equitably.
- **Universal Basic Mobility:** Encourage partnerships and policies to broaden safe and efficient access to a range of mobility services to improve connections to jobs, education, and basic services.
- **Workforce Development:** Foster a positive business climate by promoting regional collaboration in workforce and economic development between cities, counties, educational institutions, and employers.

Stakeholder Engagement and Feedback



- **Spring 2023:** SCAG shared draft Regional Planning Policies and solicited feedback from several stakeholder groups:
 - County Transportation Council (**CTC**) Planning Directors
 - Subregional Executive Directors
 - SCAG's Regional Planning Working Groups (**RPWG**)
 - Technical Working Group (**TWG**)
 - Regional Transit Technical Advisory Committee (**RTTAC**)
 - Global Land Use & Economic (**GLUE**) Council



Next Steps



SPRING 2023

- Public Outreach
- Draft Regional Planning Policies development

NOW

- Policy Framework Update with:
 - Updated Draft Vision and Goals
 - Revised Regional Planning Policies

THROUGH SUMMER 2023

- Plan Modeling & Data Analysis
- Incorporate feedback into:
 - Draft Implementation Strategies
 - Technical Reports

FALL 2023

- **Draft release of Connect SoCal 2024 in October**

Next Steps



June: Solicited feedback from Policy Committee members on draft Regional Planning Policies

July 2023: Seeking approval by EAC and RC on updated Policy Development Framework with revised Regional Planning Policies.

Summer 2023: Developing Implementation Strategies to include in Fall draft release of Connect SoCal 2024.

Next Steps



Policy Development Framework

Updated Vision and Goals based on public input



Connect SoCal 2024 Development

Feedback incorporated into draft strategies and technical reports



Draft Connect SoCal 2024

Anticipated release in October 2023

Development Update



FOUNDATIONS
AND
FRAMEWORKS

2021

DATA
COLLECTION
AND POLICY
DEVELOPMENT

2022

OUTREACH
AND
ANALYSIS

2023

DRAFT
PLAN AND
ADOPTION

2024

COMPLETED MILESTONES

- ✓ Draft Goals & Vision
- ✓ Draft Performance Measures
- ✓ Local Data Exchange
- ✓ Project List

MILESTONES FOR 2023

- Public Outreach & Engagement
- Plan Modeling, Analysis, Writing
- Draft Release in Fall 2023

Questions? Comments?

FOR MORE INFORMATION, PLEASE VISIT
SCAG.CA.GOV/CONNECT-SOCAL



THE 2024 REGIONAL TRANSPORTATION PLAN/SUSTAINABLE COMMUNITIES STRATEGY
OF THE SOUTHERN CALIFORNIA ASSOCIATION OF GOVERNMENTS



Equity Analysis Update

Anita Au and Annaleigh Ekman

July 20, 2023



Connect SoCal Outreach

Equity Take-aways

Connect SoCal Survey



Transportation Equity Issues		Regional Equity Issues	
Fast, frequent and reliable transit and transportation options	59%	Housing affordability	64%
Safe streets for bicyclists and pedestrians	57%	Air quality	38%
Access to everyday destinations	53%	Economic opportunities	32%
Transportation affordability	31%	Clean water	31%
Freight and goods movement impacts	24%	Workforce development and pathways to good jobs	29%
Access to zero emission vehicles and charging infrastructure	20%	Housing not near jobs	25%
Distribution of transportation investments	14%	Resilience and climate vulnerability	23%
Transportation noise impacts	14%	Gentrification and displacement	21%
Other	5%	Access to broadband/internet	12%
		Other	5%

Key Themes in Feedback



Equitable Outreach
through proactive
methods

Equitable policies

Economic justice

Environmental
justice

Better resources

Affordable and
resilient housing

Improve transit
services and active
transportation
options

Equity Performance Measures



Equity Performance Measures



Economy

- Geographic Distribution of Transportation Investments
- Investments vs. Benefits
- Revenue Sources In Terms of Tax Burdens
- Impacts from Mileage-Based User Fee

Communities

- Jobs-Housing Imbalance
- Neighborhood Change and Displacement
- Rail-Related Impacts

Mobility

- Share of Transportation System Usage
- Travel Time and Travel Distance Savings
- Access to Everyday Destinations
- Bicycle and Pedestrian Collisions

Environment

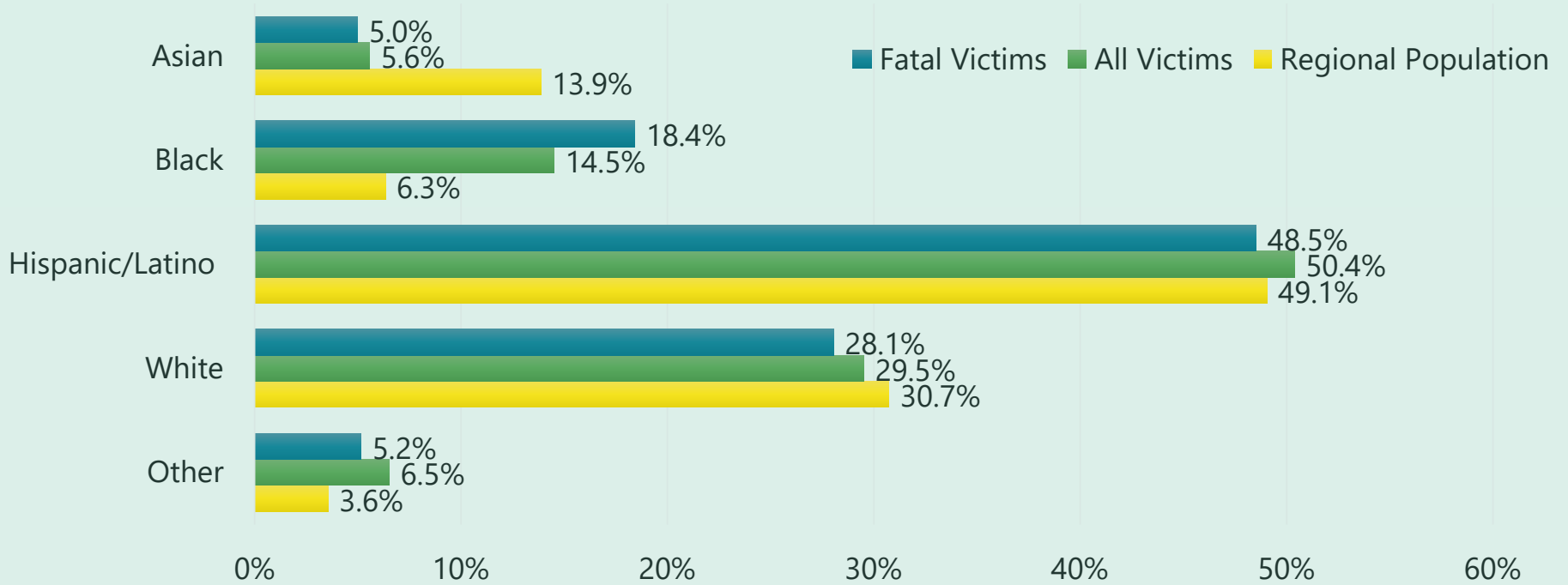
- Resilience and Climate Vulnerabilities
- Emissions Impacts Analysis
- Noise Impacts

Equity Performance Measures

Bicycle and Pedestrian Collisions



Bicyclist and Pedestrian Injuries and Fatalities by Race/Ethnicity



Source: Statewide Integrated Traffic Records System (2021), American Communities Survey (2017-2021)

Equity Performance Measures

Neighborhood Change and Displacement



Gentrifying Neighborhoods

- Targeting early signs of neighborhood change
- Low-income neighborhoods experiencing substantial in-migration of college-educated individuals

Eviction Filings

- Comparing the prevalence of filings in gentrifying neighborhoods and the region

Equity Performance Measures

Neighborhood Change and Displacement



Initial Take-Aways

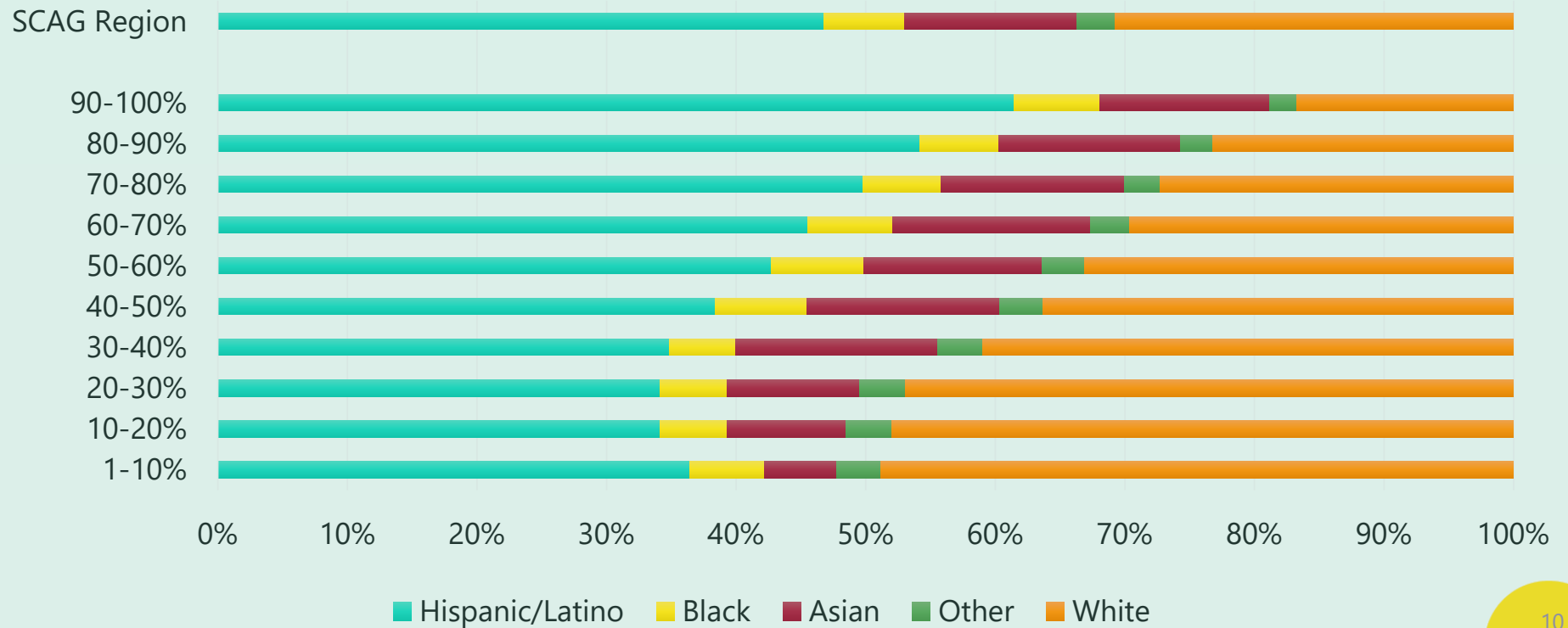
- Gentrification is more pronounced in neighborhoods with a higher concentration of **immigrants** and **renters** as well as **communities of color**.
- Gentrifying neighborhoods did not experience a pronounced change in **income**.
- Gentrifying neighborhoods are becoming more **culturally and racially diverse**.

Equity Performance Measures

Existing Conditions: CalEnviroScreen 4.0 Scores in SCAG Region



CalEnviroScreen 4.0 Pollution Burden Percentile by Race and Ethnicity in the SCAG Region



Source: CalEnviroScreen 4.0

Equity Performance Measures

Impacts from Mileage-Based User Fees



Case Studies using Transportation Equity Zones

- Adelanto – Victorville
- North Hills – El Segundo

Comparison between:

- Older Model Gasoline Powered Car
- Newer Model Gasoline Powered Car
- Electric Vehicle

JLO



Slide 11

JLO [[@Annaleigh Ekman](#)] is it really an assessment? more an illustration
Jaimee Lederman, 2023-07-13T23:33:34.533

Equity Performance Measures

Impacts from Mileage-Based User Fees



Initial Take-Aways

- EVs would see the greatest impact from the shift but may still cost less factoring in gasoline/charging prices.
- User Fee JL2 programs need to be designed with an equity lens to support low-income JL0 and underserved communities JL1
 - Mobility Innovations and Pricing Report (2021)



Slide 12

JLO I wouldn't say folks. MIP specifically dealt with low income and other underserved communities which i would mention

Jaimee Lederman, 2023-07-13T23:28:41.712

JL1 I would make this a separate bullet. or just strike it

1. MIP didn't discuss the EV transition

2.its a little confusing what you are saying. i think you are saying a pricing program would still need to be structures to support EV purchases, but its not clear. This is pretty nuanced and i don't know if you want to get into it or if it is about the structure of the pricing program per se.

Jaimee Lederman, 2023-07-13T23:31:47.311

JL2 [@Annaleigh Ekman] [@Annie Nam] I think we are saying "user fees" instead of pricing throughout Connect SoCal. Annie can confirm.

Jaimee Lederman, 2023-07-13T23:32:38.297

Questions? Comments?

FOR MORE INFORMATION, PLEASE VISIT
SCAG.CA.GOV/CONNECT-SOCAL



USDOT Reconnecting Communities and Neighborhoods (RCN) Program JMO

USDOT is now accepting applications for its RCN Program:

- The program will provide funds for planning activities and capital construction projects that:
 - Prioritize disadvantage communities
 - Aim to improve access to daily destinations (jobs, education, healthcare, food , and recreation)
 - Foster equitable development and restoration
 - Reconnect communities by removing, retrofitting, mitigating, or replacing highway or transportation related facilities
- More information, including webinar recordings, is available at: <https://www.transportation.gov/grants/rcnprogram>
- **Applications due Thursday, September 28, 2023.**

Slide 1

JMO [@Annaleigh Ekman] The announcement for the RCN program has been included. I also wanted to know if we have any more announcements and if we can remove the past announcements in the powerpoint?
Jeannie Ma, 2023-07-11T22:49:47.462

AE0 0 Thanks, Jeannie! I deleted previous announcements.

[@Anita Au] do we have any other announcements?
Annaleigh Ekman, 2023-07-18T05:07:02.790

OFFERS, REQUESTS, CONNECTIONS

Offers

Has your agency been working on any equity-related work you would like to share?

Requests

Are there any issues you have experienced since we met last that you would appreciate resources/support on?

Connections

Are you interested in connecting with other agencies around a specific topic?



THANK YOU!

See you in October!