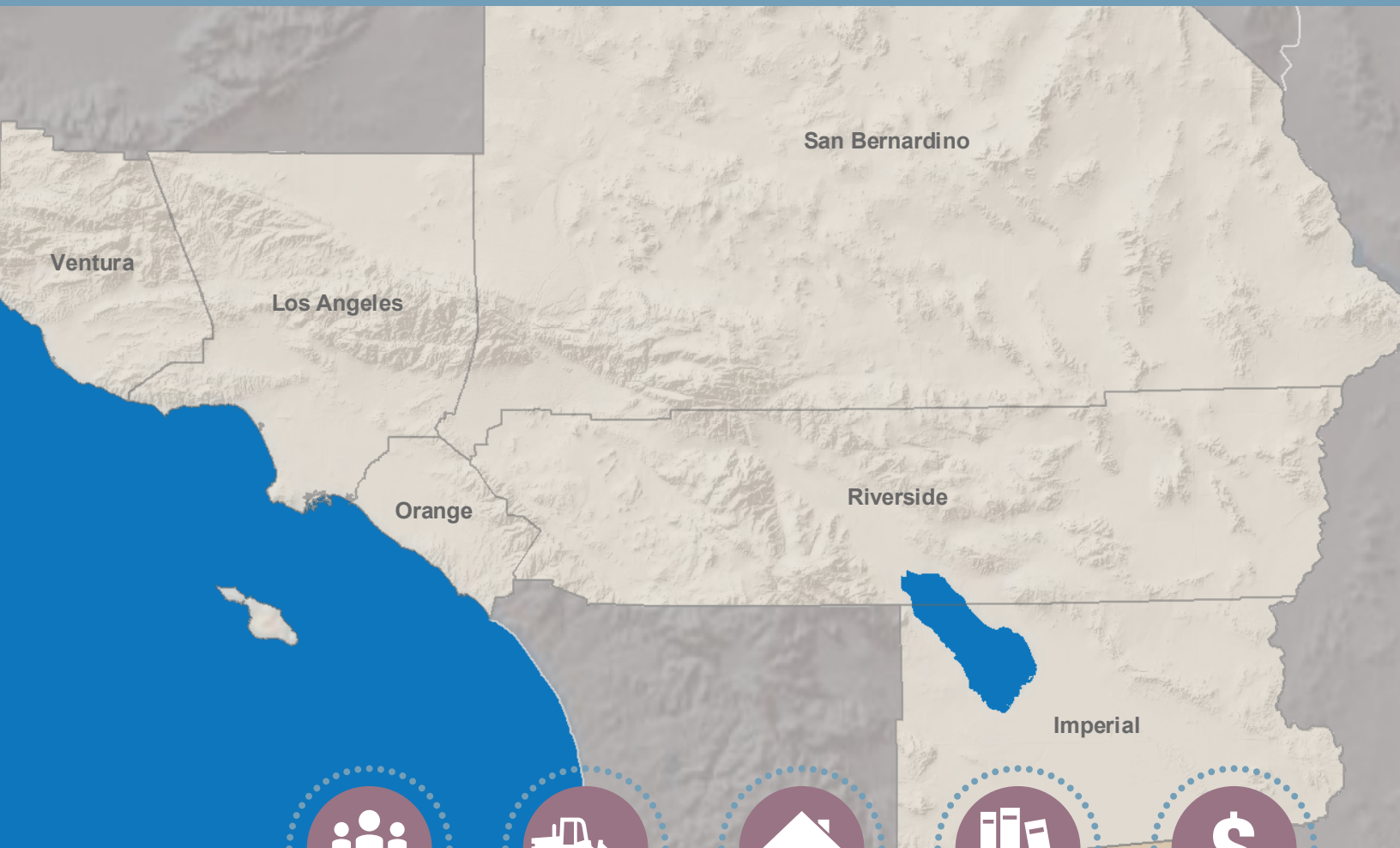


JANUARY 2021

# MONTHLY ECONOMIC REPORT

MODELING AND FORECASTING DEPARTMENT



## ABOUT THIS REPORT

This report serves to provide timely economic data on the SCAG region and each of the counties within the region – Imperial, Los Angeles, Orange, Riverside, San Bernardino and Ventura. It charts Southern California’s economic pulse, giving scholars, agencies and cities insight into the economic health of the region. The information contained herein was compiled using recent data published by the California Employment Development Department, the U.S. Bureau of Labor Statistics and the Construction Industry Research Board.

## ABOUT SCAG

SCAG is the nation’s largest metropolitan planning organization, representing six counties, 191 cities and more than 18 million residents. SCAG undertakes a variety of planning and policy initiatives to encourage a more sustainable Southern California now and in the future. For more information about SCAG, please visit [scag.ca.gov](http://scag.ca.gov).



For more information, please contact:

**John Cho**  
*Senior Regional Planner*  
*Modeling and Forecasting Department*

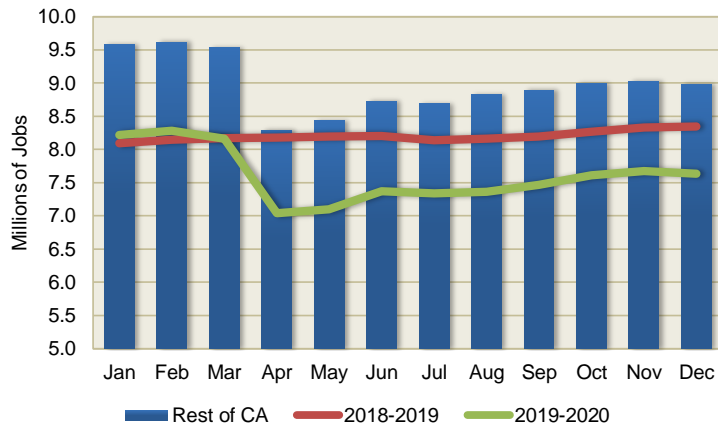
Email: [choj@scag.ca.gov](mailto:choj@scag.ca.gov)

FIGURES 1-5 ARE BASED ON COMBINED TOTAL FOR THE REGION'S COUNTIES.

\* Not seasonally-adjusted

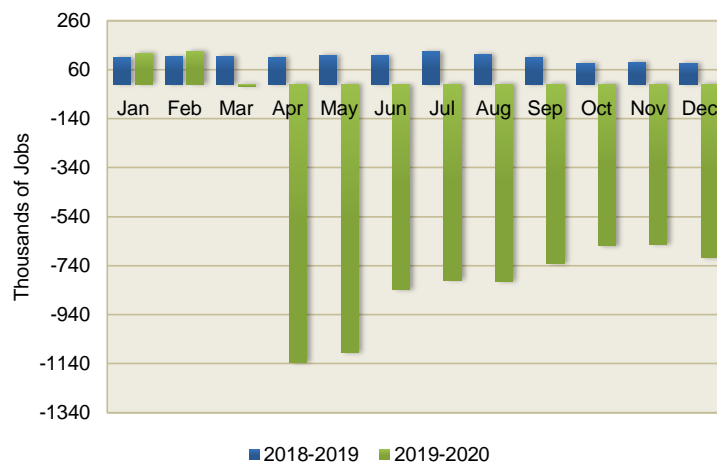
**FIGURE 1**

**2018-2020  
Employment**



**FIGURE 2**

**Change in Employment  
From Previous Year**



**FIGURE 3**

**Comparative  
Unemployment Rates  
SCAG Region vs. U.S.  
2019-2020**

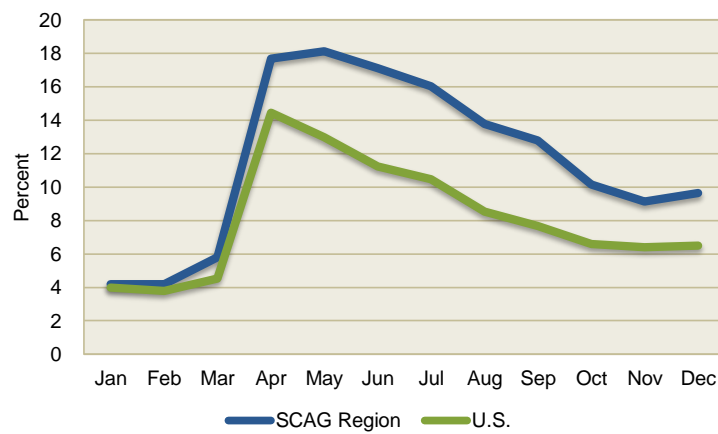
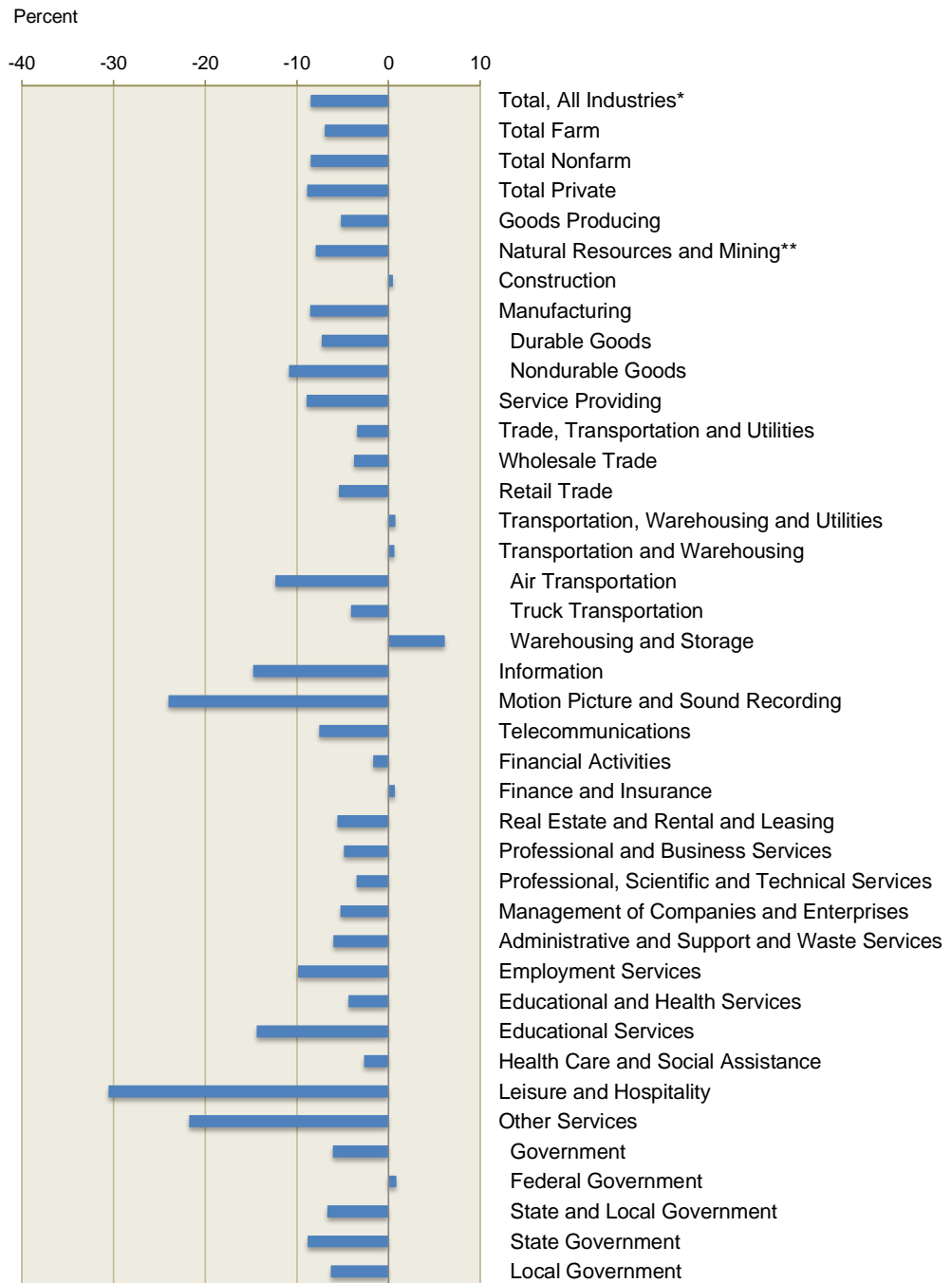


FIGURE 4

**Percentage Change in Employment by Major Sector**

(Dec. 2019 - Dec. 2020)  
SCAG Region

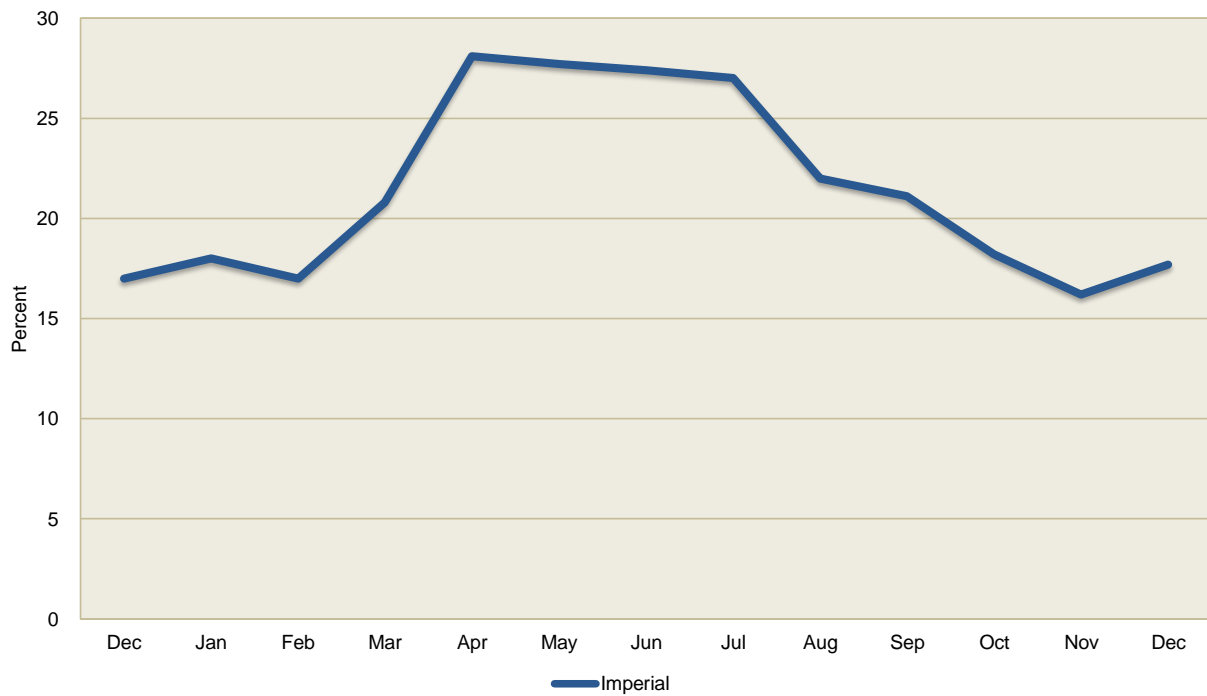
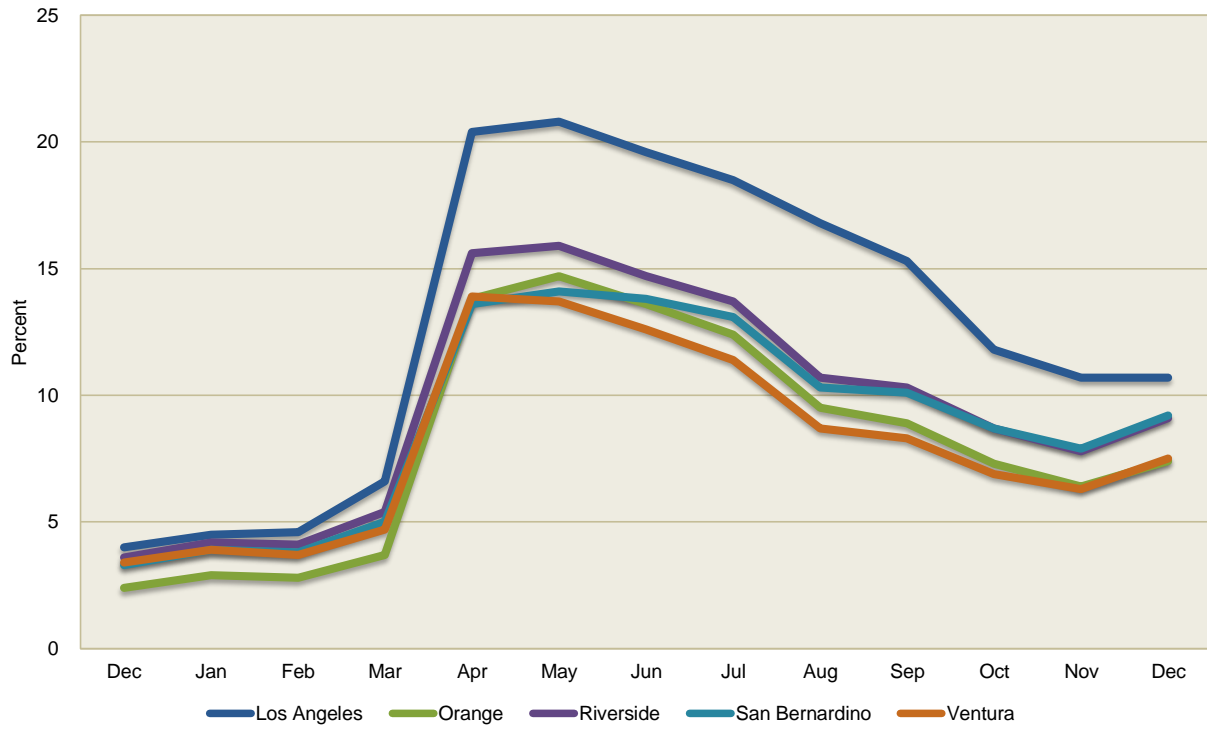


\* Excludes self employed, unpaid family members, household domestic workers, and workers on strike.

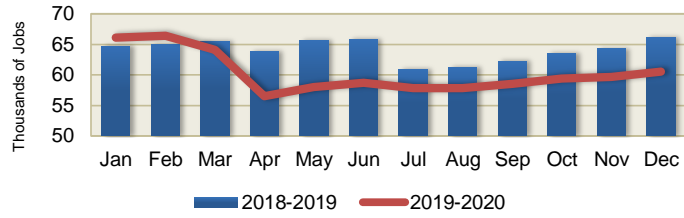
\*\* For Imperial County, includes construction.

**FIGURE 5**  
**Comparative Unemployment Rates**  
**2019-2020**

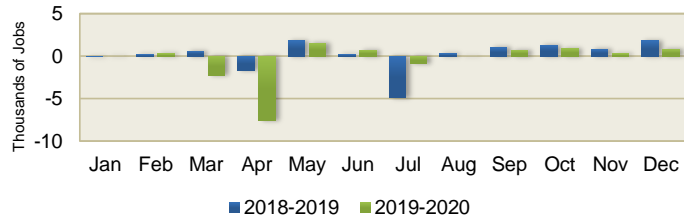
Counties in SCAG Region  
 2019-2020



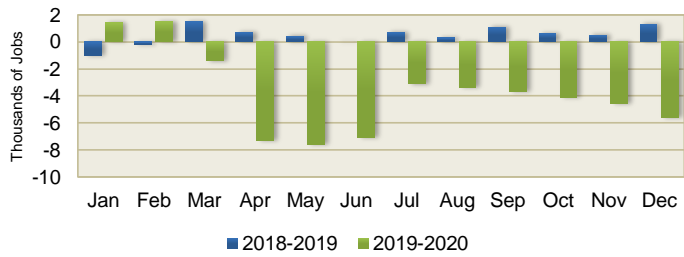
**FIGURE 6-1**  
Imperial County  
**Wage and Salary**  
2018-2020



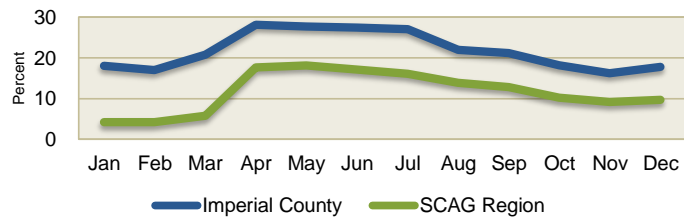
**FIGURE 6-2**  
Imperial County  
**Change in Employment**  
From Previous month



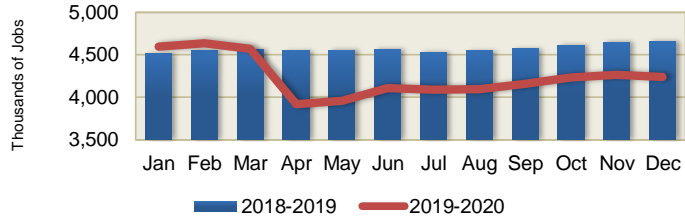
**FIGURE 6-3**  
Imperial County  
**Change in Employment**  
From Previous year



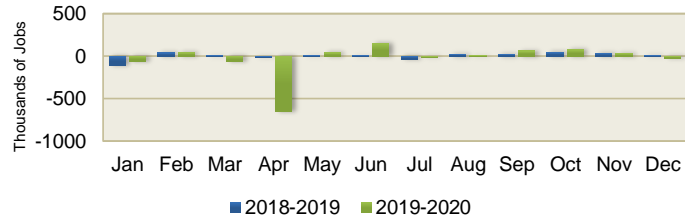
**FIGURE 6-4**  
Imperial County  
**Comparative**  
**Unemployment Rates**  
2019-2020



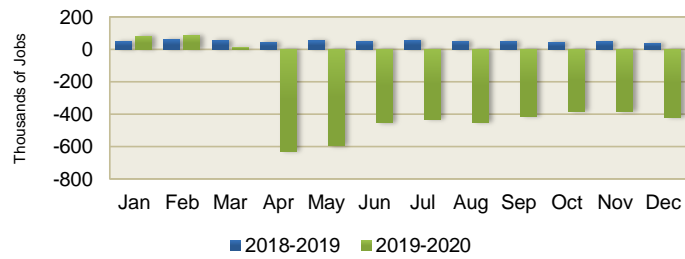
**FIGURE 7-1**  
Los Angeles County  
**Wage and Salary**  
2018-2020



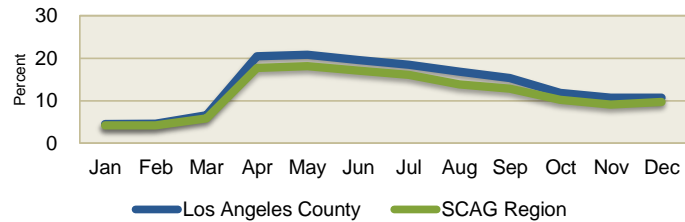
**FIGURE 7-2**  
Los Angeles County  
**Change in Employment**  
From Previous month



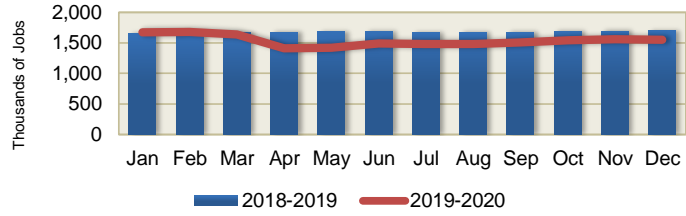
**FIGURE 7-3**  
Los Angeles County  
**Change in Employment**  
From Previous year



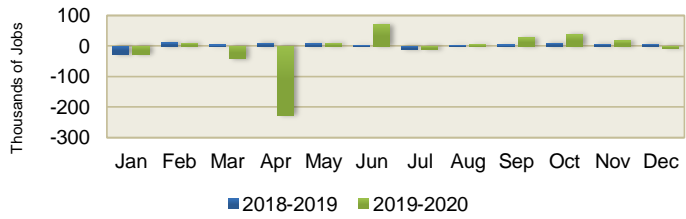
**FIGURE 7-4**  
Los Angeles County  
**Comparative**  
**Unemployment Rates**  
2019-2020



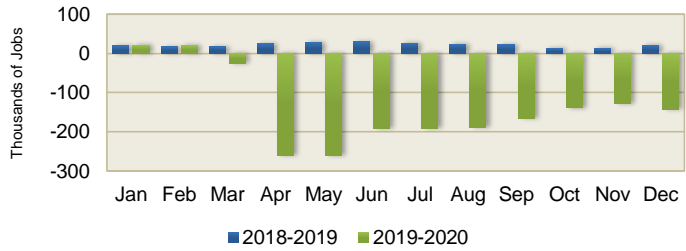
**FIGURE 8-1**  
Orange County  
**Wage and Salary**  
2018-2020



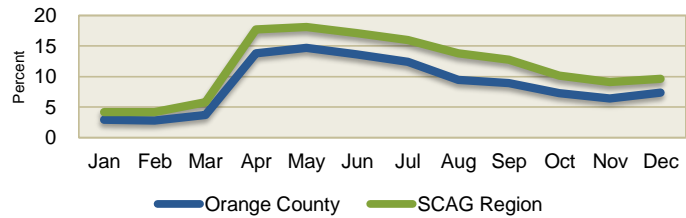
**FIGURE 8-2**  
Orange County  
**Change in Employment**  
From Previous month



**FIGURE 8-3**  
Orange County  
**Change in Employment**  
From Previous year

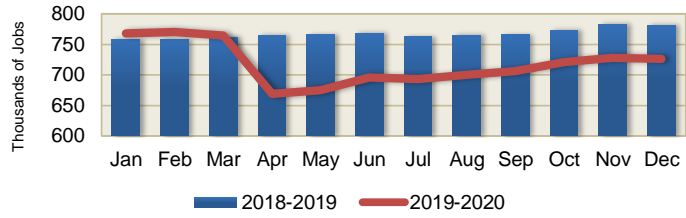


**FIGURE 8-4**  
Orange County  
**Comparative**  
**Unemployment Rates**  
2019-2020

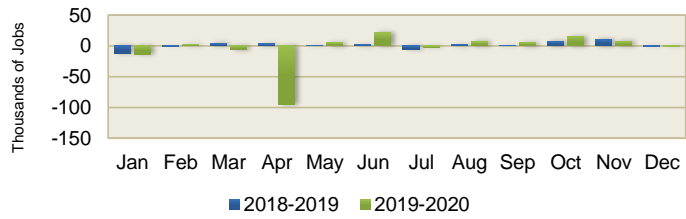




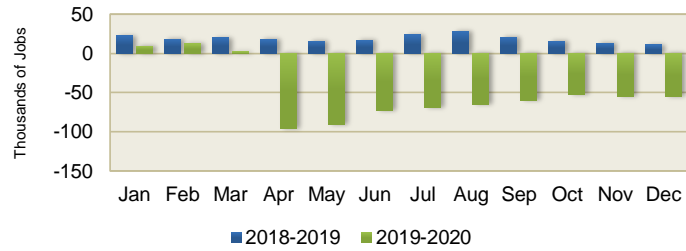
**FIGURE 9-1**  
Riverside County  
**Wage and Salary**  
2018-2020



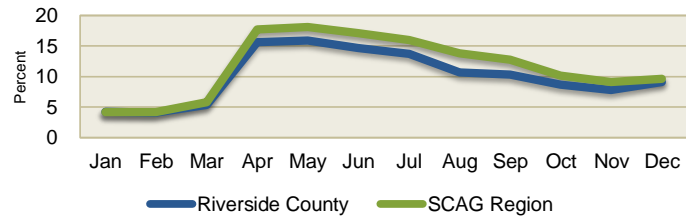
**FIGURE 9-2**  
Riverside County  
**Change in Employment**  
From Previous month



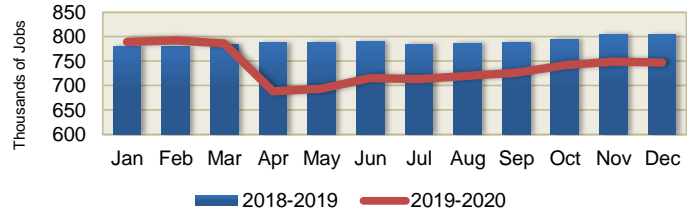
**FIGURE 9-3**  
Riverside County  
**Change in Employment**  
From Previous year



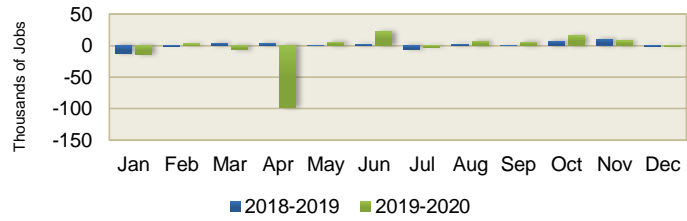
**FIGURE 9-4**  
Riverside County  
**Comparative**  
**Unemployment Rates**  
2019-2020



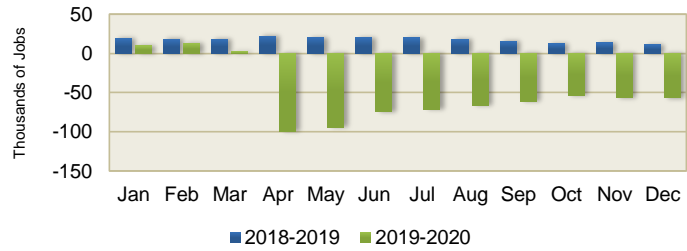
**FIGURE 10-1**  
San Bernardino County  
**Wage and Salary**  
2018-2020



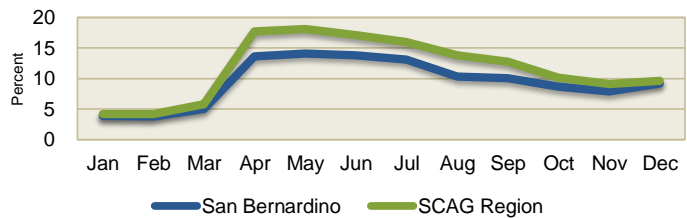
**FIGURE 10-2**  
San Bernardino County  
**Change in Employment**  
From Previous month



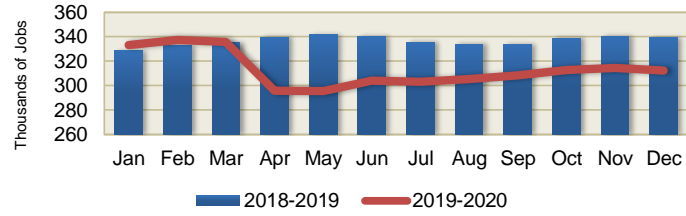
**FIGURE 10-3**  
San Bernardino County  
**Change in Employment**  
From Previous year  
(Thousands of Jobs)



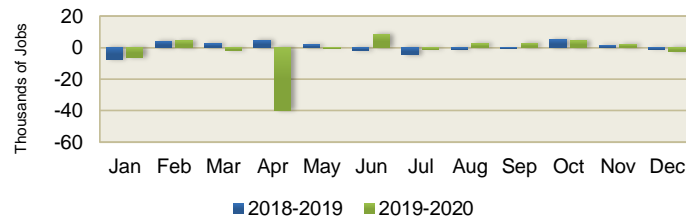
**FIGURE 10-4**  
San Bernardino County  
**Comparative**  
**Unemployment Rates**  
2019-2020



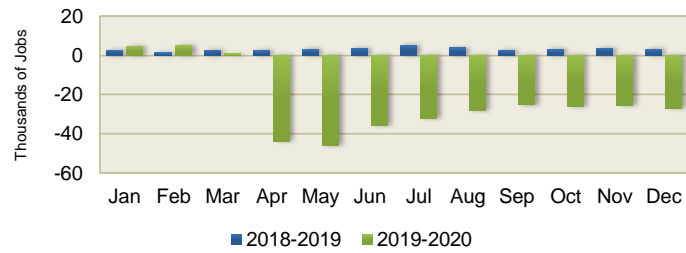
**FIGURE 11-1**  
Ventura County  
**Wage and Salary**  
2018-2020



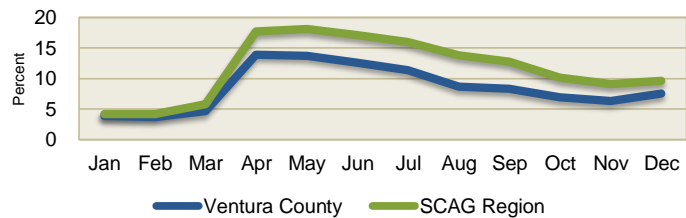
**FIGURE 11-2**  
Ventura County  
**Change in Employment**  
From Previous month



**FIGURE 11-3**  
Ventura County  
**Change in Employment**  
From Previous year



**FIGURE 11-4**  
Ventura County  
**Comparative**  
**Unemployment Rates**  
2019-2020



FIGURES 12-18 ARE BASED ON COMBINED TOTAL FOR THE REGION'S COUNTIES.

FIGURE 12

2018-2020  
Building Permits  
Single Family

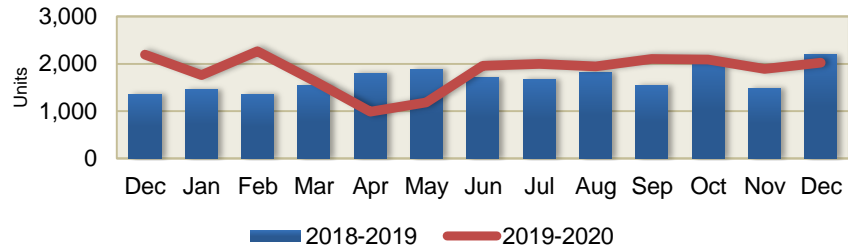


FIGURE 13

Building Permits  
Multi Family

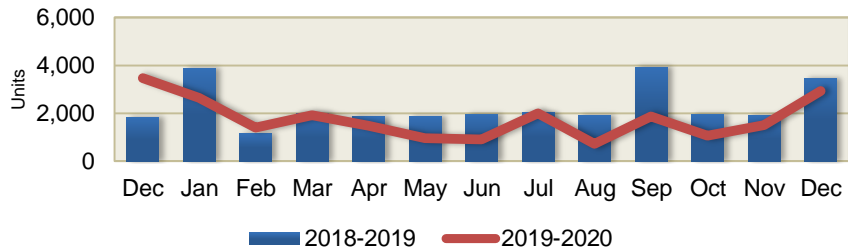


FIGURE 14

Valuation of Total  
Building Permits

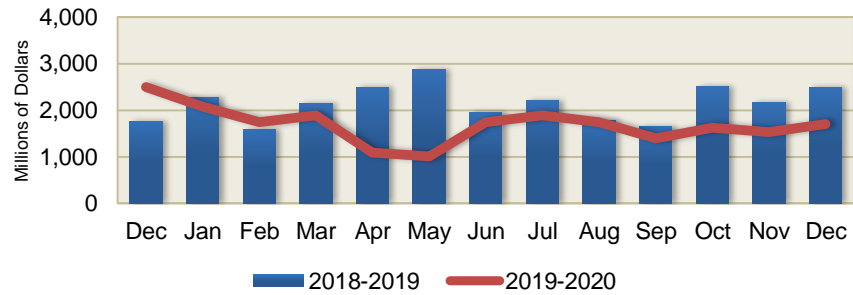


FIGURE 15

**Valuation of Residential Building Permits**

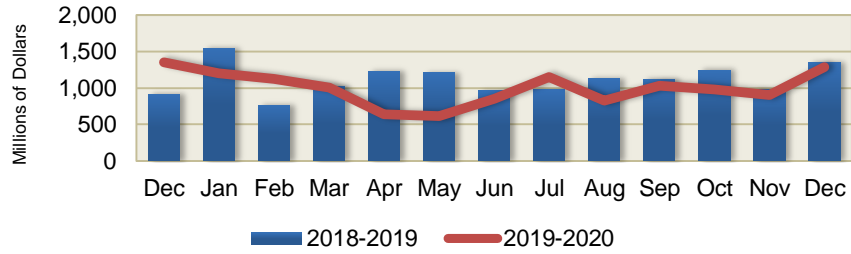


FIGURE 16

**Valuation of Commercial Building Permits**

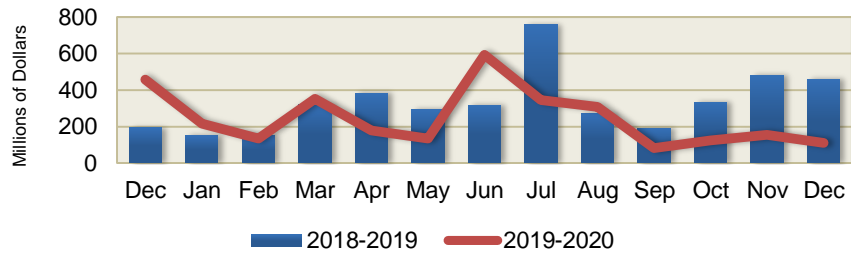


FIGURE 17

**Valuation of Industrial Building Permits**

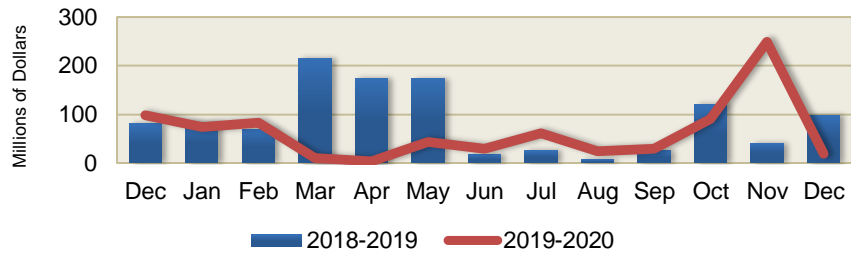


FIGURE 18

**Valuation of Other Building Permits**

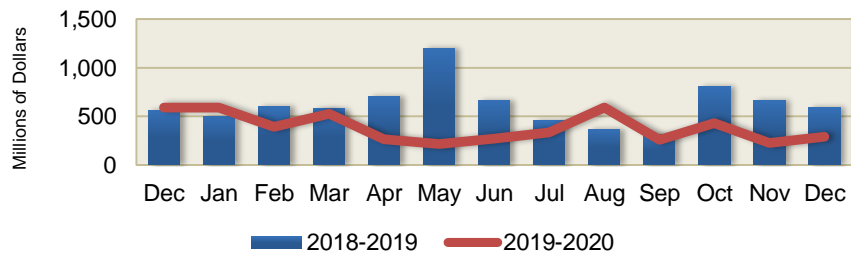


FIGURE 19

**Comparative Building Permits ( Residential )**

Southern California Association of Governments' Counties (Units)

2019-2020

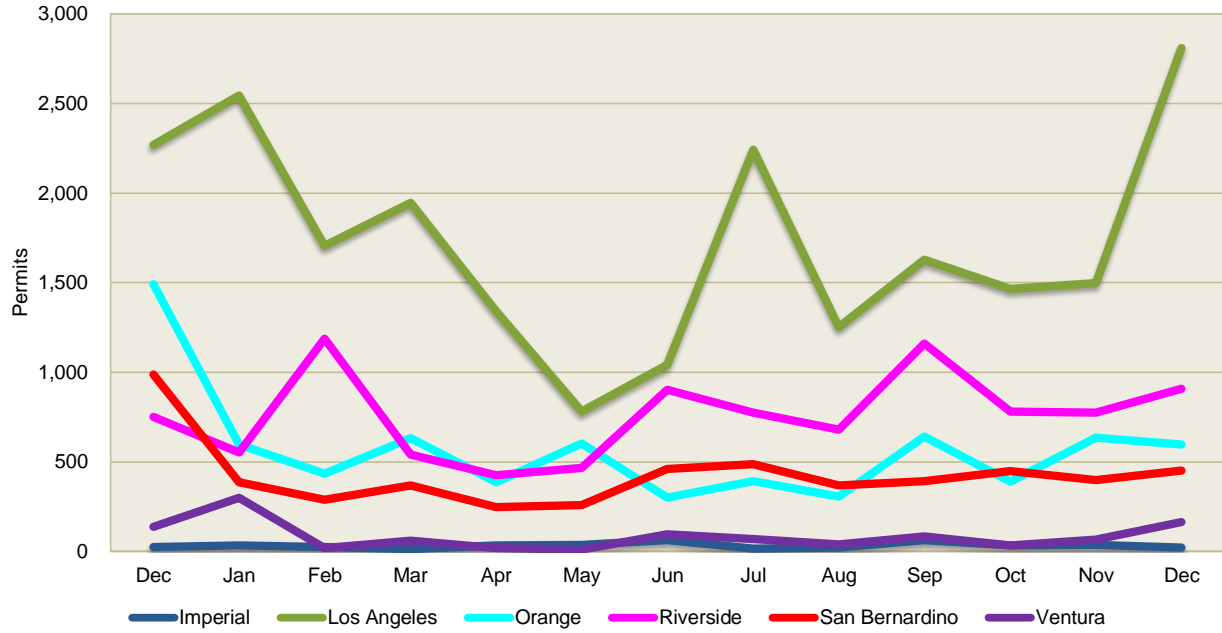


FIGURE 20

**Comparative Building Permits (Total valuation)**

Southern California Association of Governments' Counties (Millions of Dollars)

2019-2020

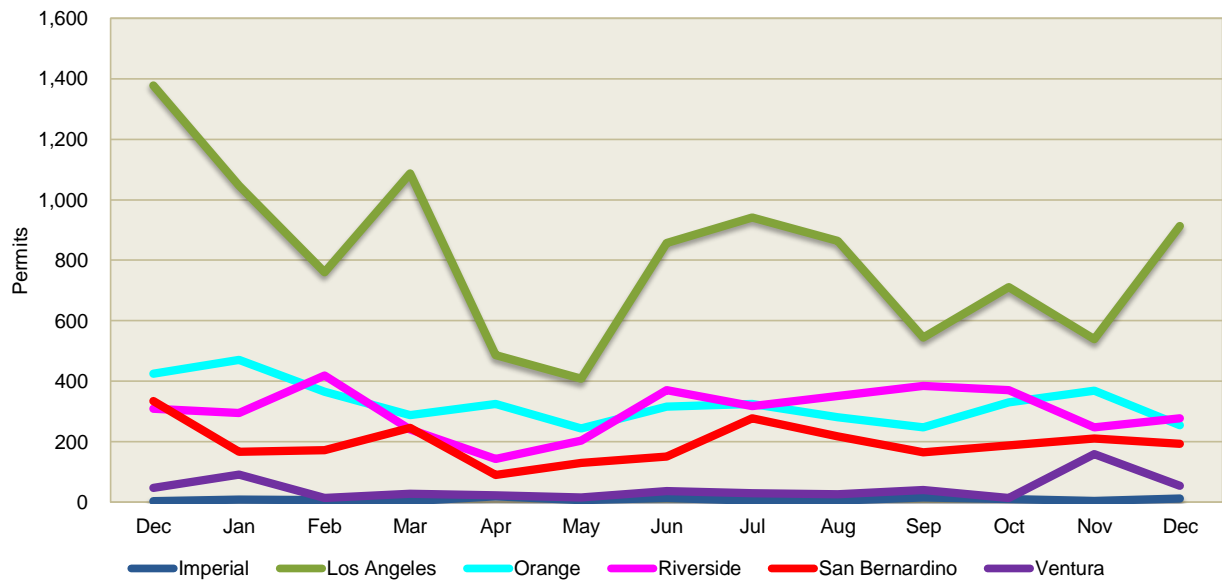


FIGURE 21

**Comparative Building Permits (Residential valuation)**

Southern California Association of Governments' Counties (Millions of Dollars)  
2019-2020

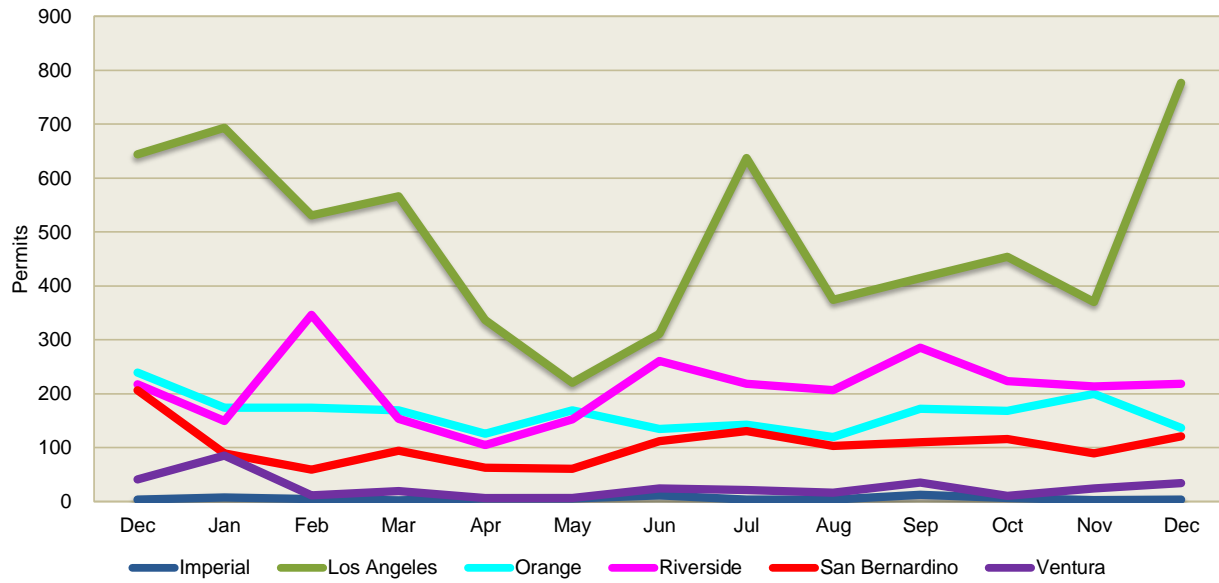
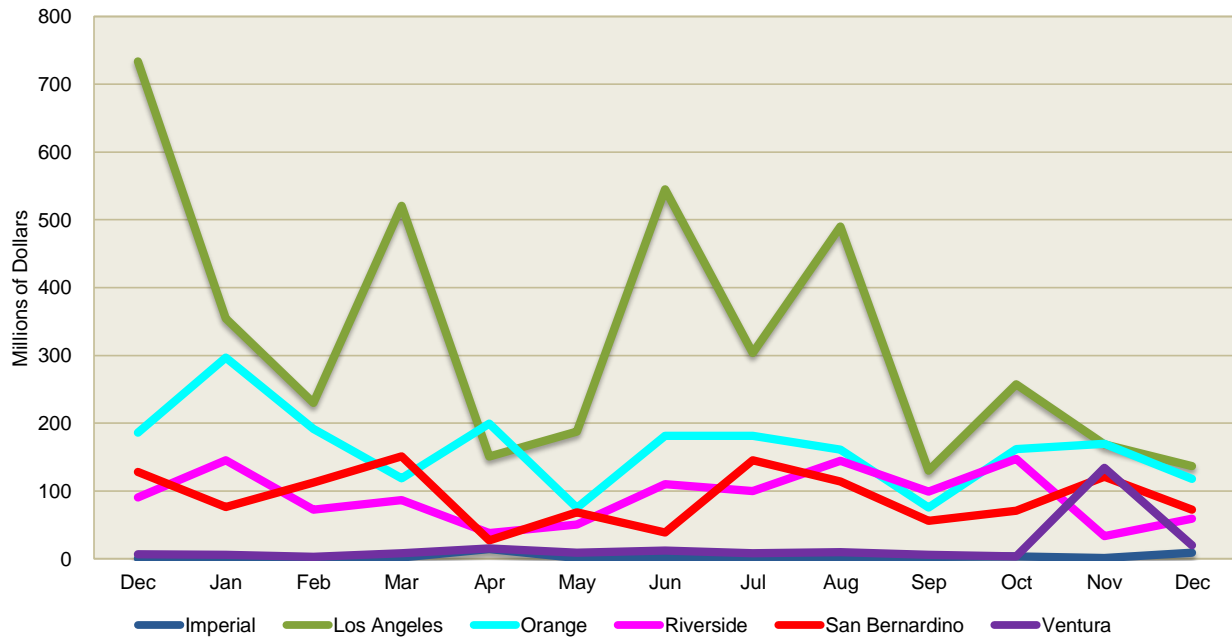


FIGURE 22

**Comparative Building Permits (Non-Residential valuation)**

Southern California Association of Governments' Counties (Millions of Dollars)  
2019-2020



**TABLE 1 WAGE AND SALARY EMPLOYMENT (THOUSAND JOBS) in SCAG REGION**

COUNTY/MSA	Dec	Jan	Feb	Mar	Apr	May	Jun	Jul	Aug	Sep	Oct	Nov	Dec	% of Region Total Latest Month
<b>IMPERIAL</b>														
2018-2019	64.8	64.7	64.9	65.5	63.8	65.6	65.8	60.9	61.2	62.2	63.5	64.3	66.1	0.8%
2019-2020	66.1	66.1	66.4	64.1	56.5	58.0	58.7	57.8	57.8	58.5	59.4	59.7	60.5	0.8%
<b>LOS ANGELES</b>														
2018-2019	4,621.5	4,514.3	4,553.6	4,560.2	4,548.4	4,556.0	4,561.3	4,522.7	4,547.1	4,571.1	4,615.0	4,648.5	4,658.7	55.8%
2019-2020	4,658.7	4,596.0	4,636.8	4,573.6	3,920.1	3,960.3	4,107.2	4,090.8	4,095.8	4,156.5	4,231.8	4,263.3	4,239.1	55.5%
<b>ORANGE</b>														
2018-2019	1,676.8	1,648.7	1,659.5	1,662.9	1,672.1	1,679.8	1,680.9	1,669.5	1,671.3	1,674.9	1,684.7	1,690.9	1,697.3	20.3%
2019-2020	1,697.3	1,669.8	1,679.6	1,637.7	1,411.8	1,420.2	1,489.1	1,478.1	1,482.6	1,509.2	1,545.4	1,562.4	1,554.2	20.3%
<b>RIVERSIDE</b>														
2018-2019	770.6	758.2	758.0	761.9	765.2	765.8	767.9	762.6	764.9	765.6	772.7	782.7	781.4	9.4%
2019-2020	781.4	767.6	770.2	764.1	668.9	674.5	695.7	693.4	700.1	705.7	720.6	727.8	726.2	9.5%
<b>SAN BERNARDINO</b>														
2018-2019	793.1	780.4	780.1	784.2	787.6	788.2	790.4	784.9	787.2	787.9	795.2	805.5	804.3	9.6%
2019-2020	804.3	790.1	792.7	786.4	688.4	694.2	716.0	713.6	720.6	726.3	741.6	749.0	747.4	9.8%
<b>VENTURA</b>														
2018-2019	336.1	328.5	332.5	335.0	339.6	341.5	339.9	335.3	333.9	333.6	338.7	340.1	339.2	4.1%
2019-2020	339.2	333.1	337.4	335.8	295.8	295.6	304.1	303.1	305.6	308.3	312.6	314.7	312.2	4.1%
<b>SCAG REGION</b>														
2018-2019														
	8,262.8	8,094.8	8,148.6	8,169.7	8,176.7	8,196.9	8,206.2	8,135.9	8,165.6	8,195.3	8,269.8	8,332.0	8,347.0	100.0%
2019-2020	8,347.0	8,222.7	8,283.1	8,161.6	7,041.5	7,102.7	7,370.7	7,336.8	7,362.5	7,464.5	7,611.4	7,676.9	7,639.5	100.0%
(12MMA)*	8,203.2	8,213.9	8,225.1	8,224.4	8,129.8	8,038.6	7,969.0	7,902.4	7,835.5	7,774.6	7,719.7	7,665.1	7,606.2	

\* 12 Month Moving Average (12MMA for Dec 2020)=Average of December 2019 through December 2020

Prepared by Modeling and Forecasting Department  
 Southern California Association of Governments (SCAG)  
 Source: California Employment Development Department

**TABLE 2 CHANGE IN EMPLOYMENT FROM PREVIOUS MONTH (THOUSAND JOBS)**

COUNTY/MSA	Dec	Jan	Feb	Mar	Apr	May	Jun	Jul	Aug	Sep	Oct	Nov	Dec
<b>IMPERIAL</b>													
2018-2019	1.0	-0.1	0.2	0.6	-1.7	1.8	0.2	-4.9	0.3	1.0	1.3	0.8	1.8
2019-2020	1.8	0.0	0.3	-2.3	-7.6	1.5	0.7	-0.9	0.0	0.7	0.9	0.3	0.8
<b>LOS ANGELES</b>													
2018-2019	19.2	-107.2	39.3	6.6	-11.8	7.6	5.3	-38.6	24.4	24.0	43.9	33.5	10.2
2019-2020	10.2	-62.7	40.8	-63.2	-653.5	40.2	146.9	-16.4	5.0	60.7	75.3	31.5	-24.2
<b>ORANGE</b>													
2018-2019	-1.3	-28.1	10.8	3.4	9.2	7.7	1.1	-11.4	1.8	3.6	9.8	6.2	6.4
2019-2020	6.4	-27.5	9.8	-41.9	-225.9	8.4	68.9	-11.0	4.5	26.6	36.2	17.0	-8.2
<b>RIVERSIDE</b>													
2018-2019	0.8	-12.3	-0.2	3.9	3.3	0.6	2.1	-5.3	2.3	0.7	7.1	10.0	-1.2
2019-2020	-1.2	-13.8	2.6	-6.2	-95.2	5.6	21.2	-2.3	6.8	5.6	14.9	7.2	-1.6
<b>SAN BERNARDINO</b>													
2018-2019	0.8	-12.7	-0.3	4.1	3.4	0.6	2.2	-5.5	2.3	0.7	7.3	10.3	-1.3
2019-2020	-1.3	-14.2	2.6	-6.3	-97.9	5.7	21.8	-2.3	7.0	5.7	15.3	7.4	-1.7
<b>VENTURA</b>													
2018-2019	-0.3	-7.6	4.0	2.5	4.6	1.9	-1.6	-4.6	-1.4	-0.3	5.1	1.4	-0.9
2019-2020	-0.9	-6.1	4.3	-1.6	-40.0	-0.2	8.5	-1.0	2.5	2.7	4.3	2.1	-2.5
<b>SCAG REGION</b>													
2018-2019	20.2	-168.0	53.8	21.1	7.0	20.2	9.3	-70.3	29.7	29.7	74.5	62.2	15.0
2019-2020	15.0	-124.3	60.4	-121.5	-1,120.1	61.2	268.0	-33.9	25.7	102.0	146.9	65.5	-37.4

Prepared by Modeling and Forecasting Department  
 Southern California Association of Governments (SCAG)  
 Source: California Employment Development Department



**TABLE 3 CHANGE IN EMPLOYMENT FROM YEAR EARLIER (THOUSAND JOBS)**

COUNTY/MSA	Dec	Jan	Feb	Mar	Apr	May	Jun	Jul	Aug	Sep	Oct	Nov	Dec	% Change in Latest Month
<b>IMPERIAL</b>														
2018-2019	-0.6	-1.0	-0.2	1.5	0.7	0.4	0.0	0.7	0.3	1.1	0.6	0.5	1.3	2.0%
2019-2020	1.3	1.4	1.5	-1.4	-7.3	-7.6	-7.1	-3.1	-3.4	-3.7	-4.1	-4.6	-5.6	-8.5%
<b>LOS ANGELES</b>														
2018-2019	66.0	47.2	58.1	54.4	44.7	51.5	46.9	56.7	49.9	49.0	42.2	46.2	37.2	0.8%
2019-2020	37.2	81.7	83.2	13.4	-628.3	-595.7	-454.1	-431.9	-451.3	-414.6	-383.2	-385.2	-419.6	-9.0%
<b>ORANGE</b>														
2018-2019	20.0	19.1	16.7	17.4	24.2	28.1	29.2	26.5	23.8	22.6	13.2	12.8	20.5	1.2%
2019-2020	20.5	21.1	20.1	-25.2	-260.3	-259.6	-191.8	-191.4	-188.7	-165.7	-139.3	-128.5	-143.1	-8.4%
<b>RIVERSIDE</b>														
2018-2019	28.4	22.3	18.2	19.8	17.6	15.7	16.6	23.6	27.8	20.8	15.3	12.9	10.9	1.4%
2019-2020	10.9	9.4	12.2	2.1	-96.3	-91.4	-72.3	-69.2	-64.8	-59.9	-52.1	-54.9	-55.3	-7.1%
<b>SAN BERNARDINO</b>														
2018-2019	16.8	19.0	17.8	18.2	22.0	20.2	20.2	19.7	17.7	15.3	12.1	13.3	11.2	1.4%
2019-2020	11.2	9.7	12.6	2.2	-99.2	-94.0	-74.4	-71.3	-66.6	-61.6	-53.6	-56.5	-56.9	-7.1%
<b>VENTURA</b>														
2018-2019	2.6	2.7	1.3	2.7	2.4	3.1	3.6	5.1	3.8	2.4	3.1	3.7	3.1	0.9%
2019-2020	3.1	4.6	4.9	0.8	-43.8	-45.9	-35.8	-32.2	-28.3	-25.3	-26.1	-25.4	-27.0	-8.0%
<b>SCAG REGION</b>														
2018-2019	133.2	109.3	111.9	114.0	111.6	119.0	116.5	132.3	123.3	111.2	86.5	89.4	84.2	1.0%
2019-2020	84.2	127.9	134.5	-8.1	-1,135.2	-1,094.2	-835.5	-799.1	-803.1	-730.8	-658.4	-655.1	-707.5	-8.5%

Prepared by Modeling and Forecasting Department  
 Southern California Association of Governments (SCAG)  
 Source: California Employment Development Department

**TABLE 4 COMPARATIVE UNEMPLOYMENT RATES (PERCENT, NOT SEASONALLY ADJUSTED)**

AREA	2019		2020											
	Dec	Jan	Feb	Mar	Apr	May	Jun	Jul	Aug	Sep	Oct	Nov	Dec	
<b>UNITED STATES</b>	3.4	4.0	3.8	4.5	14.4	13.0	11.2	10.5	8.5	7.7	6.6	6.4	6.5	
<b>CALIFORNIA</b>	3.7	4.3	4.3	5.8	16.2	16.0	15.1	13.9	11.3	10.7	8.7	7.9	8.8	
<b>SCAG REGION</b>	3.7	4.2	4.2	5.8	17.7	18.1	17.1	16.0	13.8	12.8	10.2	9.1	9.6	
<b>IMPERIAL</b>	17.0	18.0	17.0	20.8	28.1	27.7	27.4	27.0	22.0	21.1	18.2	16.2	17.7	
<b>LOS ANGELES</b>	4.0	4.5	4.6	6.6	20.4	20.8	19.6	18.5	16.8	15.3	11.8	10.7	10.7	
<b>ORANGE</b>	2.4	2.9	2.8	3.7	13.8	14.7	13.6	12.4	9.5	8.9	7.3	6.4	7.4	
<b>RIVERSIDE</b>	3.6	4.2	4.1	5.4	15.6	15.9	14.7	13.7	10.7	10.3	8.7	7.8	9.1	
<b>SAN BERNARDINO</b>	3.3	3.9	3.8	5.0	13.6	14.1	13.8	13.1	10.3	10.1	8.7	7.9	9.2	
<b>VENTURA</b>	3.4	3.9	3.7	4.7	13.9	13.7	12.6	11.4	8.7	8.3	6.9	6.3	7.5	
<b>SCAG-US</b>	0.3	0.2	0.4	1.3	3.2	5.1	5.9	5.6	5.2	5.1	3.6	2.7	3.1	
Difference between SCAG and U.S. Unemployment Rate														

Prepared by Modeling and Forecasting Department  
 Southern California Association of Governments (SCAG)  
 Source: California Employment Development Department

TABLE 5 CURRENT EMPLOYMENT AND CHANGE IN EMPLOYMENT FROM YEAR EARLIER, BY MAJOR SECTOR \*

	Jobs by Sector (Thousands)						Change in Employment from Year Earlier (Thousands)					REGION TOTAL		
	Imperial	Los Angeles	Orange	riverside/ San Bernardino		Ventura	TOTAL	Imperial	Los Angeles	Orange	riverside/ San Bernardino		Thousands	Percent
				Bernardino	San						Bernardino	San		
<b>Total, All Industries*</b>	60.5	4,239.1	1,554.2	1,473.5	312.2	7,639.5	-5.6	-419.6	-143.1	-112.2	-27.0	-707.5	-8.5%	
Total Farm	10.9	4.2	1.2	13.9	20.8	51.0	-0.7	-0.5	-0.4	-0.7	-1.5	-3.8	-6.9%	
Total Nonfarm	49.6	4,234.9	1,553.0	1,459.6	291.4	7,588.5	-4.9	-419.1	-142.7	-111.5	-25.5	-703.7	-8.5%	
Total Private	32.1	3,663.7	1,396.9	1,210.2	249.1	6,552.0	-2.9	-384.4	-131.0	-99.0	-19.4	-636.7	-8.9%	
Goods Producing	3.7	462.6	253.6	196.4	43.3	959.6	0.2	-29.3	-12.1	-9.7	-1.4	-52.3	-5.2%	
Natural Resources and Mining**	1.9	1.7	0.4	0.9	0.9	5.8	0.0	-0.2	0.0	-0.3	0.0	-0.5	-7.9%	
Construction	NA	148.1	107.9	107.1	17.4	380.5	NA	-2.9	1.9	2.7	0.0	1.7	0.4%	
Manufacturing	1.8	312.8	145.3	88.4	25.0	573.3	0.2	-26.2	-14.0	-12.1	-1.4	-53.5	-8.5%	
Durable Goods	0.5	193.3	108.1	56.7	18.1	376.7	0.0	-9.0	-11.3	-8.1	-1.2	-29.6	-7.3%	
Nondurable Goods	1.3	119.5	37.2	31.7	6.9	196.6	0.2	-17.2	-2.7	-4.0	-0.2	-23.9	-10.8%	
Service Providing	45.9	3,772.3	1,299.4	1,263.2	248.1	6,628.9	-5.1	-389.8	-130.6	-101.8	-24.1	-651.4	-8.9%	
Trade, Transportation and Utilities	12.5	850.9	254.2	403.6	54.6	1,575.8	-0.2	-29.8	-12.6	-8.7	-5.1	-56.4	-3.5%	
Wholesale Trade	1.7	212.5	73.0	66.0	12.5	365.7	-0.1	-6.2	-6.2	-1.0	-0.8	-14.3	-3.8%	
Retail Trade	8.4	418.7	148.5	177.6	35.5	788.7	0.0	-18.8	-8.6	-13.4	-4.4	-45.2	-5.4%	
Transportation, Warehousing and Utilities	2.4	219.7	32.7	160.0	6.6	421.4	-0.1	-4.8	2.2	5.7	0.1	3.1	0.7%	
Transportation and Warehousing	NA	207.0	29.6	155.2	5.6	397.4	NA	-5.3	2.0	5.7	0.1	2.5	0.6%	
Air Transportation	NA	31.9	NA	NA	NA	31.9	NA	-4.5	NA	NA	NA	-4.5	-12.4%	
Truck Transportation	NA	31.9	NA	26.7	NA	58.6	NA	-2.0	NA	-0.5	NA	-2.5	-4.1%	
Warehousing and Storage	NA	21.9	5.9	89.5	NA	117.3	NA	0.5	0.5	5.8	NA	6.8	6.2%	
Information	0.2	191.7	22.1	9.7	4.1	227.8	-0.1	-33.2	-3.9	-1.7	-0.6	-39.5	-14.8%	
Motion Picture and Sound Recording	NA	104.0	NA	NA	NA	104.0	NA	-32.8	NA	NA	NA	-32.8	-24.0%	
Telecommunications	NA	17.0	5.6	4.4	NA	27.0	NA	-0.9	-0.5	-0.8	NA	-2.2	-7.5%	
Financial Activities	1.2	224.4	114.8	44.0	15.7	400.1	0.0	-1.0	-5.0	-0.5	-0.3	-6.8	-1.7%	
Finance and Insurance	NA	141.5	78.4	23.7	11.0	254.6	NA	4.5	-1.8	-0.5	-0.5	1.7	0.7%	
Real Estate and Rental and Leasing	NA	82.9	36.4	20.3	4.7	144.3	NA	-5.5	-3.2	0.0	0.2	-8.5	-5.6%	
Professional and Business Services	2.6	614.6	318.4	155.2	45.9	1,136.7	-0.1	-38.6	-15.8	-3.9	0.2	-58.2	-4.9%	
Professional, Scientific and Technical Services	NA	290.4	132.0	41.8	20.2	484.4	NA	-16.2	-2.6	-0.3	1.6	-17.5	-3.5%	
Management of Companies and Enterprises	NA	60.0	37.4	9.2	7.8	114.4	NA	-4.6	-1.8	0.2	-0.1	-6.3	-5.2%	
Administrative and Support and Waste Services	NA	264.2	149.0	104.2	17.9	535.3	NA	-17.8	-11.4	-3.8	-1.3	-34.3	-6.0%	
Employment Services	NA	93.5	71.7	45.3	7.8	218.3	NA	-13.1	-9.4	-0.9	-0.5	-23.9	-9.9%	
Educational and Health Services	7.5	822.9	224.0	249.9	48.8	1,353.1	-1.7	-42.2	-10.2	-6.8	-1.2	-62.1	-4.4%	
Educational Services	NA	126.3	27.6	16.8	NA	170.7	NA	-19.4	-5.8	-3.4	NA	-28.6	-14.4%	
Health Care and Social Assistance	NA	696.6	196.4	233.1	NA	1,126.1	NA	-22.8	-4.4	-3.4	NA	-30.6	-2.6%	
Leisure and Hospitality	3.5	372.1	168.7	116.2	29.0	689.5	-1.0	-174.7	-60.1	-58.4	-9.0	-303.2	-30.5%	
Other Services	0.9	124.5	41.1	35.2	7.7	209.4	0.0	-35.6	-11.3	-9.3	-2.0	-58.2	-21.7%	
Government	17.5	571.2	156.1	249.4	42.3	1,036.5	-2.0	-34.7	-11.7	-12.5	-6.1	-67.0	-6.1%	
Federal Government	2.2	49.1	10.9	21.9	7.5	91.6	0.1	0.5	-0.2	0.5	-0.1	0.8	0.9%	
State and Local Government	15.3	522.1	145.2	227.5	34.8	944.9	-2.1	-35.2	-11.5	-13.0	-6.0	-67.8	-6.7%	
State Government	2.8	84.7	32.2	30.0	2.8	152.5	0.0	-9.7	-2.8	-2.0	-0.3	-14.8	-8.8%	
Local Government	12.5	437.4	113.0	197.5	32.0	792.4	-2.1	-25.5	-8.7	-11.0	-5.7	-53.0	-6.3%	
Local Government Education	NA	217.0	72.0	118.3	17.2	424.5	NA	-21.2	-6.9	-7.1	-5.3	-40.5	-8.7%	

Note: (N/A) Sector not shown separately in original EDD data for this county.

\* Excludes self employed, unpaid family members, household domestic workers, and workers on strike.

\*\* For Imperial County, includes construction.

Prepared by Modeling and Forecasting Department  
 Southern California Association of Governments (SCAG)  
 Source: California Employment Development Department

**TABLE 6 COMPARATIVE UNEMPLOYMENT FOR SCAG REGION (Thousands of People, Rate in %, NOT SEASONALLY ADJUSTED)**

AREA		2019		2020											
		Dec	Jan	Feb	Mar	Apr	May	Jun	Jul	Aug	Sep	Oct	Nov	Dec	
UNITED STATES 2019-2020	Civilian Labor Force	164,007.0	163,497.0	164,235.0	162,537.0	155,830.0	157,975.0	160,883.0	161,374.0	160,966.0	160,073.0	161,053.0	160,468.0	160,017.0	
	Civilian Employment	158,504.0	156,994.0	158,017.0	155,167.0	133,326.0	137,461.0	142,811.0	144,492.0	147,224.0	147,796.0	150,433.0	150,203.0	149,613.0	
	Civilian Unemployment	5,503.0	6,504.0	6,218.0	7,370.0	22,504.0	20,514.0	18,072.0	16,882.0	13,742.0	12,277.0	10,620.0	10,264.0	10,404.0	
	Civilian Unemployment Rate	3.4%	4.0%	3.8%	4.5%	14.4%	13.0%	11.2%	10.5%	8.5%	7.7%	6.6%	6.4%	6.5%	
CALIFORNIA	Civilian Labor Force	19,470.1	19,477.4	19,528.5	19,192.1	18,518.3	18,423.4	18,928.4	18,919.9	18,678.6	18,730.8	19,289.3	18,938.2	18,916.4	
	Civilian Employment	18,758.9	18,637.4	18,686.1	18,085.7	15,524.5	15,473.9	16,076.2	16,295.3	16,558.7	16,724.9	17,606.8	17,442.5	17,246.8	
	Civilian Unemployment	711.2	840.0	842.4	1,106.4	2,993.8	2,949.4	2,852.1	2,624.6	2,119.9	2,006.0	1,682.6	1,495.7	1,669.6	
	Civilian Unemployment Rate	3.7%	4.3%	4.3%	5.8%	16.2%	16.0%	15.1%	13.9%	11.3%	10.7%	8.7%	7.9%	8.8%	
<b>SCAG REGION</b>	Civilian Labor Force	9,373.1	9,382.8	9,417.5	9,142.4	8,800.5	8,761.6	9,064.5	9,097.7	8,981.5	9,029.1	9,288.9	9,139.8	9,062.2	
	Civilian Employment	9,027.6	8,989.8	9,023.0	8,613.3	7,244.2	7,174.4	7,515.3	7,640.4	7,743.5	7,873.7	8,346.1	8,305.5	8,188.2	
	Civilian Unemployment	345.4	393.0	394.5	529.0	1,556.3	1,587.3	1,549.1	1,457.5	1,238.0	1,155.3	942.8	834.3	874.1	
	Civilian Unemployment Rate	3.7%	4.2%	4.2%	5.8%	17.7%	18.1%	17.1%	16.0%	13.8%	12.8%	10.1%	9.1%	9.6%	
SCAG share (%)	Civilian Labor Force	48.1%	48.2%	48.2%	47.6%	47.5%	47.6%	47.9%	48.1%	48.1%	48.2%	48.2%	48.3%	47.9%	
	Civilian Employment	48.1%	48.2%	48.3%	47.6%	46.7%	46.4%	46.7%	46.9%	46.8%	47.1%	47.4%	47.6%	47.5%	
	Civilian Unemployment	48.6%	46.8%	46.8%	47.8%	52.0%	53.8%	54.3%	55.5%	58.4%	57.6%	56.0%	55.8%	52.4%	
IMPERIAL	Civilian Labor Force	71.9	72.4	71.7	73.1	71.9	71.8	73.2	71.7	68.2	67.5	68.1	65.8	67.1	
	Civilian Employment	59.6	59.4	59.4	57.9	51.7	51.9	53.1	52.4	53.2	53.2	55.7	55.2	55.3	
	Civilian Unemployment	12.2	13.0	12.2	15.2	20.2	19.9	20.1	19.4	15.0	14.3	12.4	10.7	11.9	
LOS ANGELES	Civilian Labor Force	5,158.2	5,189.2	5,222.8	4,996.6	4,756.9	4,716.1	4,924.5	4,956.7	4,935.7	4,962.4	5,077.1	4,999.3	4,896.2	
	Civilian Employment	4,951.1	4,956.9	4,984.6	4,669.1	3,787.6	3,735.5	3,958.9	4,040.1	4,107.5	4,202.3	4,477.1	4,465.7	4,374.5	
	Civilian Unemployment	207.1	232.2	238.2	327.5	969.3	980.6	965.5	916.7	828.2	760.1	600.0	533.6	521.6	
ORANGE	Civilian Labor Force	1,631.1	1,622.1	1,623.9	1,587.7	1,540.3	1,547.6	1,594.6	1,590.5	1,549.7	1,562.8	1,621.3	1,593.4	1,598.7	
	Civilian Employment	1,592.0	1,575.5	1,578.4	1,528.6	1,327.7	1,320.5	1,377.0	1,393.7	1,402.6	1,423.4	1,503.0	1,491.8	1,479.7	
	Civilian Unemployment	39.1	46.6	45.5	59.0	212.6	227.1	217.6	196.8	147.1	139.4	118.3	101.5	119.1	
RIVERSIDE	Civilian Labor Force	1,111.9	1,106.1	1,104.7	1,098.8	1,085.2	1,085.9	1,101.1	1,103.1	1,077.7	1,081.0	1,118.1	1,099.4	1,108.6	
	Civilian Employment	1,071.3	1,059.3	1,059.0	1,039.7	915.7	913.0	939.3	951.8	962.7	969.2	1,021.1	1,013.7	1,008.3	
	Civilian Unemployment	40.6	46.8	45.7	59.1	169.5	172.8	161.9	151.3	114.9	111.8	97.1	85.6	100.4	
SAN BERNARDINO	Civilian Labor Force	975.5	970.0	969.7	964.1	933.9	934.8	958.2	963.0	945.6	949.3	984.9	969.4	977.8	
	Civilian Employment	943.3	932.1	932.6	915.9	806.6	803.3	826.0	836.7	848.1	853.2	898.7	892.5	887.7	
	Civilian Unemployment	32.2	37.9	37.0	48.2	127.3	131.4	132.2	126.3	97.5	96.1	86.2	77.0	90.0	
VENTURA	Civilian Labor Force	424.5	423.0	424.7	422.1	412.3	405.5	412.9	412.7	404.6	406.0	419.4	412.5	413.8	
	Civilian Employment	410.3	406.6	409.0	402.1	354.9	350.1	361.0	365.7	369.3	372.3	390.5	386.6	382.7	
	Civilian Unemployment	14.2	16.4	15.8	20.0	57.4	55.4	51.9	47.0	35.3	33.6	28.9	25.9	31.1	

Prepared by Modeling and Forecasting Department  
 Southern California Association of Governments (SCAG)  
 Source: California Employment Development Department

**TABLE 7 SCAG REGION RESIDENTIAL BUILDING PERMITS (UNITS, SINGLE FAMILY )**

COUNTY/MSA	Dec	Jan	Feb	Mar	Apr	May	Jun	Jul	Aug	Sep	Oct	Nov	Dec	% of Region Total Latest Month
<b>IMPERIAL</b>														
2018-2019	5	9	12	24	11	3	43	22	28	41	41	14	19	0.9%
2019-2020	19	34	23	10	29	28	63	16	20	38	33	3	22	1.1%
<b>LOS ANGELES</b>														
2018-2019	427	468	401	457	479	594	493	429	457	441	573	403	543	24.8%
2019-2020	543	592	579	461	331	317	374	510	629	559	693	448	702	34.8%
<b>ORANGE</b>														
2018-2019	189	240	223	236	352	285	192	293	271	211	347	214	261	11.9%
2019-2020	261	193	305	291	96	169	233	262	252	255	275	340	190	9.4%
<b>RIVERSIDE</b>														
2018-2019	458	465	445	512	602	603	589	492	586	458	625	510	676	30.9%
2019-2020	676	540	1170	533	373	459	895	718	671	852	731	751	732	36.3%
<b>SAN BERNARDINO</b>														
2018-2019	230	216	211	266	289	341	352	372	395	326	409	295	624	28.5%
2019-2020	624	360	176	291	145	204	345	447	337	346	348	303	335	16.6%
<b>VENTURA</b>														
2018-2019	51	52	60	53	62	63	35	66	85	61	76	50	68	3.1%
2019-2020	68	45	11	54	14	10	41	41	36	57	11	51	38	1.9%
<b>REGION</b>														
2018-2019	1,360	1,450	1,352	1,548	1,795	1,889	1,704	1,674	1,822	1,538	2,071	1,486	2,191	100.0%
2019-2020	2,191	1,764	2,264	1,640	988	1,187	1,951	1,994	1,945	2,107	2,091	1,896	2,019	100.0%

Prepared by Modeling and Forecasting Department  
 Southern California Association of Governments (SCAG)  
 Source: Construction Industry Research Board

**TABLE 8 SCAG REGION RESIDENTIAL BUILDING PERMITS (UNITS, MULTI FAMILY )**

COUNTY/MSA	Dec	Jan	Feb	Mar	Apr	May	Jun	Jul	Aug	Sep	Oct	Nov	Dec	% of Region Total Latest Month
<b>IMPERIAL</b>														
2018-2019	42	2	0	171	2	6	31	35	88	0	6	48	5	0.1%
2019-2020	5	0	2	3	5	9	0	0	0	24	0	32	0	0.0%
<b>LOS ANGELES</b>														
2018-2019	1601	2175	577	1222	855	1449	1064	969	992	2155	1378	1323	1725	49.8%
2019-2020	1725	1951	1125	1485	1010	464	667	1733	624	1069	772	1049	2107	71.9%
<b>ORANGE</b>														
2018-2019	66	999	81	392	618	162	533	751	553	1086	430	334	1230	35.5%
2019-2020	1230	402	127	340	291	433	67	131	54	385	115	295	406	13.9%
<b>RIVERSIDE</b>														
2018-2019	6	547	21	7	175	158	274	145	64	170	50	113	74	2.1%
2019-2020	74	13	17	6	52	7	7	56	9	307	50	23	176	6.0%
<b>SAN BERNARDINO</b>														
2018-2019	81	55	236	33	193	62	12	124	197	493	66	50	363	10.5%
2019-2020	363	26	111	78	102	53	115	39	31	45	99	94	117	4.0%
<b>VENTURA</b>														
2018-2019	36	87	231	172	6	17	52	0	3	18	19	24	68	2.0%
2019-2020	68	254	7	6	4	0	53	28	2	27	23	16	125	4.3%
<b>REGION</b>														
2018-2019	1,832	3,865	1,146	1,997	1,849	1,854	1,966	2,024	1,897	3,922	1,949	1,892	3,465	100.0%
2019-2020	3,465	2,646	1,389	1,918	1,464	966	909	1,987	720	1,857	1,059	1,509	2,931	100.0%

Prepared by Modeling and Forecasting Department  
 Southern California Association of Governments (SCAG)  
 Source: Construction Industry Research Board

**TABLE 9 SCAG REGION BUILDING PERMITS (VALUATION / MILLION DOLLARS, TOTAL )**

COUNTY/MSA	Dec	Jan	Feb	Mar	Apr	May	Jun	Jul	Aug	Sep	Oct	Nov	Dec	% of Region Total Latest Month
<b>IMPERIAL</b>														
2018-2019	13.2	2.7	3.5	30.6	14.8	4.1	21.2	10.9	18.9	13.5	12.6	17.2	4.0	0.2%
2019-2020	4.0	8.0	6.2	4.1	19.4	6.7	13.6	4.3	5.6	14.7	10.2	4.0	12.6	0.7%
<b>LOS ANGELES</b>														
2018-2019	923.6	1,104.0	700.4	925.2	960.0	1,768.6	1,065.9	1,235.3	850.8	886.1	1,020.8	1,249.1	1,377.8	55.2%
2019-2020	1,377.8	1,047.4	760.9	1,086.8	486.6	408.3	856.7	941.1	863.9	544.5	711.8	539.0	913.2	53.6%
<b>ORANGE</b>														
2018-2019	327.1	630.2	316.3	506.6	782.3	345.9	341.4	501.0	380.0	308.9	820.1	437.1	425.0	17.0%
2019-2020	425.0	470.5	365.0	288.3	325.1	243.8	316.0	323.8	280.8	247.2	329.9	368.9	254.5	14.9%
<b>RIVERSIDE</b>														
2018-2019	296.9	315.3	258.5	368.5	431.3	402.9	291.9	247.6	279.2	198.9	275.2	183.7	308.3	12.3%
2019-2020	308.3	294.6	418.7	240.4	142.8	202.7	371.1	318.3	351.3	384.3	370.8	247.0	277.9	16.3%
<b>SAN BERNARDINO</b>														
2018-2019	154.8	167.3	247.1	257.6	236.7	298.9	176.9	173.2	182.0	188.9	323.5	241.6	334.3	13.4%
2019-2020	334.3	166.1	171.2	245.0	90.0	129.5	150.7	276.5	217.2	165.6	187.0	210.5	193.5	11.4%
<b>VENTURA</b>														
2018-2019	36.2	57.9	58.1	46.8	59.4	52.4	62.8	44.2	66.1	50.5	52.7	34.2	47.8	1.9%
2019-2020	47.8	91.1	13.9	27.5	21.9	15.7	36.9	29.2	26.7	40.4	14.3	158.8	53.4	3.1%
<b>REGION</b>														
2018-2019	1,751.8	2,277.3	1,583.9	2,135.2	2,484.4	2,872.7	1,960.1	2,212.3	1,777.0	1,646.7	2,504.9	2,162.9	2,497.2	100.0%
2019-2020	2,497.2	2,077.7	1,736.0	1,892.1	1,085.8	1,006.6	1,745.0	1,893.3	1,745.5	1,396.7	1,624.1	1,528.2	1,705.2	100.0%

Prepared by Modeling and Forecasting Department  
 Southern California Association of Governments (SCAG)  
 Source: Construction Industry Research Board

**TABLE 10 SCAG REGION BUILDING PERMITS (VALUATION / MILLION DOLLARS, RESIDENTIAL )**

COUNTY/MSA	Dec	Jan	Feb	Mar	Apr	May	Jun	Jul	Aug	Sep	Oct	Nov	Dec	% of Region Total Latest Month
<b>IMPERIAL</b>														
2018-2019	3.4	1.9	2.4	19.2	3.0	2.0	12.0	6.7	13.6	7.6	9.4	11.0	3.6	0.3%
2019-2020	3.6	7.3	5.0	2.2	5.1	5.4	11.1	3.3	3.3	12.5	6.5	3.1	3.9	0.3%
<b>LOS ANGELES</b>														
2018-2019	557.1	826.7	358.4	524.4	530.0	657.8	445.8	438.5	528.9	559.9	609.9	473.4	644.2	47.6%
2019-2020	644.2	693.0	531.0	566.2	336.2	220.4	311.3	637.3	373.6	414.5	454.3	370.2	776.6	60.2%
<b>ORANGE</b>														
2018-2019	111.4	375.7	129.5	194.6	319.7	180.4	157.0	210.0	205.2	229.8	223.4	185.8	239.2	17.7%
2019-2020	239.2	173.8	173.8	169.4	126.1	168.7	134.9	142.5	119.6	171.9	168.1	199.3	136.4	10.6%
<b>RIVERSIDE</b>														
2018-2019	130.4	217.8	139.9	157.2	240.9	207.8	214.6	169.3	219.6	163.6	206.2	145.2	217.5	16.1%
2019-2020	217.5	149.3	346.3	153.6	104.8	152.5	260.9	218.2	206.8	285.3	223.6	213.7	218.7	16.9%
<b>SAN BERNARDINO</b>														
2018-2019	84.1	73.7	89.7	91.7	107.5	126.0	104.7	121.0	125.9	128.2	151.6	139.6	206.3	15.3%
2019-2020	206.3	89.6	59.2	94.0	62.9	61.1	112.3	131.1	103.0	109.9	116.1	89.5	121.0	9.4%
<b>VENTURA</b>														
2018-2019	29.6	49.1	46.8	38.8	23.8	32.7	28.3	31.4	38.5	28.9	45.4	26.1	41.2	3.0%
2019-2020	41.2	85.2	11.1	19.2	6.5	6.8	24.7	21.5	16.9	34.7	10.7	24.7	33.8	2.6%
<b>REGION</b>														
2018-2019	915.9	1,545.0	766.7	1,026.0	1,224.8	1,206.7	962.6	977.1	1,131.8	1,118.1	1,245.8	981.1	1,352.1	100.0%
2019-2020	1,352.1	1,198.2	1,126.4	1,004.6	641.5	614.9	855.2	1,154.0	823.1	1,028.9	979.2	900.6	1,290.3	100.0%

Prepared by Modeling and Forecasting Department  
 Southern California Association of Governments (SCAG)  
 Source: Construction Industry Research Board

**TABLE 11 SCAG REGION BUILDING PERMITS (VALUATION / MILLION DOLLARS, COMMERCIAL )**

COUNTY/MSA	Dec	Jan	Feb	Mar	Apr	May	Jun	Jul	Aug	Sep	Oct	Nov	Dec	% of Region Total Latest Month
<b>IMPERIAL</b>														
2018-2019	8.2	0.0	0.0	0.0	2.5	0.0	7.5	1.2	1.6	1.9	1.0	5.0	0.0	0.0%
2019-2020	0.0	0.0	0.0	1.1	0.0	0.1	0.5	0.0	1.4	0.0	0.0	0.3	0.0	0.0%
<b>LOS ANGELES</b>														
2018-2019	106.3	63.9	78.6	69.0	105.9	165.1	185.0	569.3	92.5	160.0	104.1	281.1	374.7	81.8%
2019-2020	374.7	167.2	37.0	210.3	23.5	101.0	447.7	145.5	189.2	28.7	85.4	89.9	20.7	19.1%
<b>ORANGE</b>														
2018-2019	58.4	48.9	11.2	155.3	193.4	22.4	76.9	150.3	125.7	1.0	189.5	133.0	12.3	2.7%
2019-2020	12.3	11.2	67.5	37.0	129.8	5.2	104.6	79.2	102.5	10.9	21.4	54.8	18.5	17.0%
<b>RIVERSIDE</b>														
2018-2019	11.7	27.3	15.3	65.8	37.1	42.2	16.9	20.4	33.6	15.0	8.9	14.2	10.1	2.2%
2019-2020	10.1	33.4	23.4	53.5	12.0	21.6	17.4	28.2	13.0	40.1	13.8	5.9	28.0	25.9%
<b>SAN BERNARDINO</b>														
2018-2019	6.8	9.0	43.9	27.9	41.6	61.6	18.5	10.3	15.6	12.4	30.7	47.9	60.6	13.2%
2019-2020	60.6	4.3	6.3	48.9	10.2	4.8	19.2	93.0	1.9	0.5	4.7	3.7	33.2	30.6%
<b>VENTURA</b>														
2018-2019	0.6	0.0	1.3	0.0	0.3	0.2	12.5	5.3	0.0	0.0	0.0	0.7	0.2	0.1%
2019-2020	0.2	0.9	0.0	1.8	3.5	0.0	3.5	0.0	0.0	1.3	0.0	0.1	7.9	7.3%
<b>REGION</b>														
2018-2019	192.0	149.0	150.3	318.1	380.8	291.4	317.3	756.8	269.0	190.3	334.2	481.9	457.9	100.0%
2019-2020	457.9	216.9	134.3	352.5	179.0	132.7	592.8	345.9	308.1	81.5	125.3	154.8	108.4	100.0%

Prepared by Modeling and Forecasting Department  
 Southern California Association of Governments (SCAG)  
 Source: Construction Industry Research Board

**TABLE 12 SCAG REGION BUILDING PERMITS (VALUATION / MILLION DOLLARS, INDUSTRIAL )**

COUNTY/MSA	Dec	Jan	Feb	Mar	Apr	May	Jun	Jul	Aug	Sep	Oct	Nov	Dec	% of Region Total Latest Month
<b>IMPERIAL</b>														
2018-2019	0.0	0.0	0.0	0.0	0.0	0.0	0.0	0.0	0.0	0.0	0.0	0.0	0.0	0.0%
2019-2020	0.0	0.0	0.0	0.0	0.0	0.0	0.0	0.0	0.0	0.0	0.0	0.0	0.0	0.0%
<b>LOS ANGELES</b>														
2018-2019	34.7	0.0	0.0	39.3	10.7	0.9	9.7	0.9	0.3	0.6	0.0	1.4	0.0	0.0%
2019-2020	0.0	2.8	0.0	1.3	0.0	10.1	1.0	7.8	0.3	4.0	0.0	3.7	0.0	0.0%
<b>ORANGE</b>														
2018-2019	0.0	0.0	0.2	0.0	0.0	0.9	0.0	0.0	0.0	0.0	0.0	1.4	0.0	0.0%
2019-2020	0.0	0.0	0.0	0.0	0.0	0.1	1.2	1.2	3.8	0.7	0.1	0.0	7.1	0.0%
<b>RIVERSIDE</b>														
2018-2019	22.3	28.8	68.3	99.7	106.2	97.8	5.8	17.7	6.9	0.0	10.0	3.5	49.1	49.9%
2019-2020	49.1	50.1	18.5	0.7	0.0	0.6	25.9	25.9	7.7	0.0	69.6	8.1	1.8	0.0%
<b>SAN BERNARDINO</b>														
2018-2019	22.1	54.8	0.0	75.6	57.0	61.5	1.1	6.9	0.2	25.1	110.2	34.8	49.3	50.1%
2019-2020	49.3	21.2	64.6	8.7	3.3	28.1	1.3	26.5	11.8	25.2	21.3	108.4	10.5	0.0%
<b>VENTURA</b>														
2018-2019	1.3	0.0	0.0	0.0	0.0	12.3	0.0	0.0	0.0	0.0	0.0	0.0	0.0	0.0%
2019-2020	0.0	0.0	0.0	0.0	0.0	4.9	0.0	0.0	0.0	0.0	0.0	129.0	0.0	0.0%
<b>REGION</b>														
2018-2019	80.4	83.6	68.5	214.5	173.9	173.3	16.7	25.6	7.3	25.7	120.2	41.0	98.4	100.0%
2019-2020	98.4	74.1	83.1	10.6	3.3	43.7	29.4	61.4	23.5	29.8	91.0	249.1	19.5	0.0%

Prepared by Modeling and Forecasting Department  
 Southern California Association of Governments (SCAG)  
 Source: Construction Industry Research Board

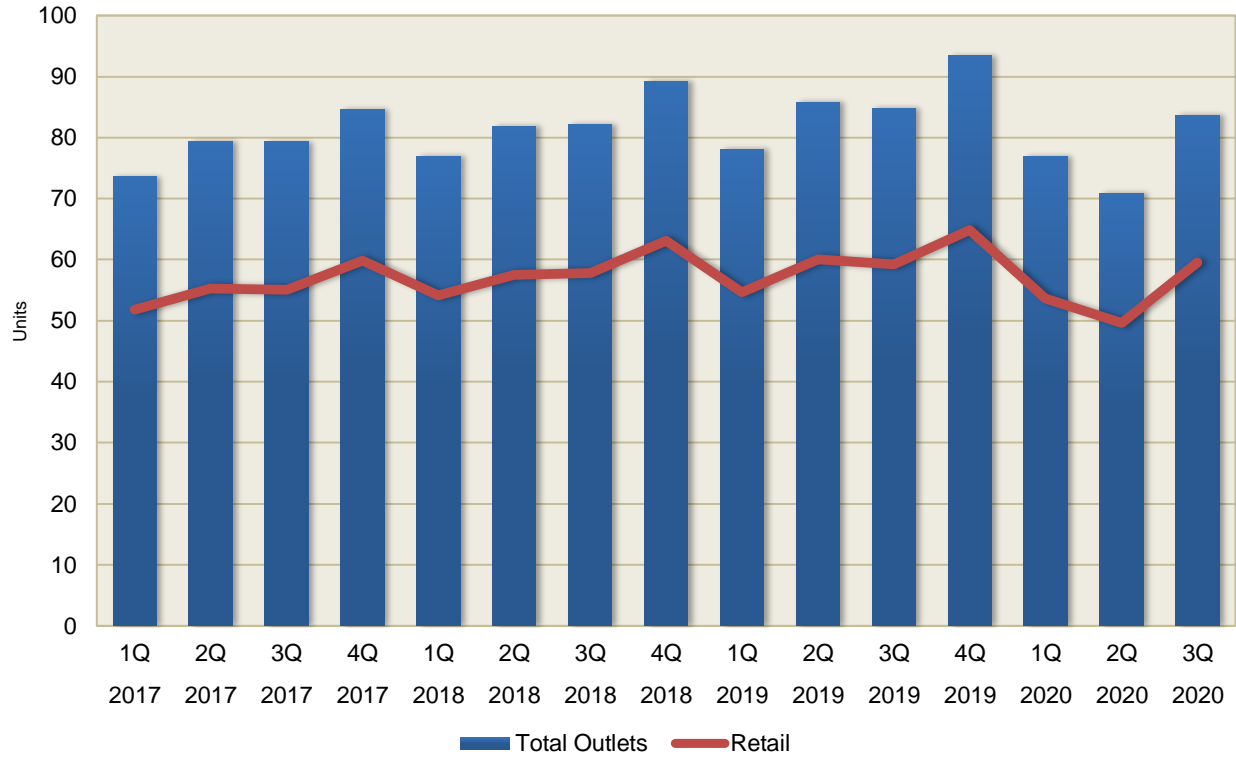
**TABLE 13 SCAG REGION BUILDING PERMITS ( VALUATION / MILLION DOLLARS, OTHERS )**

COUNTY/MSA	Dec	Jan	Feb	Mar	Apr	May	Jun	Jul	Aug	Sep	Oct	Nov	Dec	% of Region Total Latest Month
<b>IMPERIAL</b>														
2018-2019	1.6	0.8	1.1	11.4	9.3	2.1	1.6	2.9	3.6	4.1	2.1	1.1	0.4	0.1%
2019-2020	0.4	0.7	1.2	0.8	14.2	1.2	2.0	1.0	0.9	2.2	3.7	0.6	8.7	3.0%
<b>LOS ANGELES</b>														
2018-2019	225.4	213.3	263.5	292.4	313.3	944.8	425.5	226.6	229.1	165.6	306.8	493.2	359.0	61.0%
2019-2020	359.0	184.4	192.8	309.0	127.0	76.8	96.7	150.5	300.8	97.3	172.1	75.2	115.9	40.4%
<b>ORANGE</b>														
2018-2019	157.4	205.6	175.4	156.7	269.2	142.3	107.4	140.6	49.1	78.0	407.3	117.0	173.4	29.5%
2019-2020	173.4	285.5	123.7	82.0	69.3	69.8	75.3	100.9	55.0	63.8	140.3	114.8	92.5	32.2%
<b>RIVERSIDE</b>														
2018-2019	132.5	41.3	35.1	45.8	47.2	55.1	54.6	40.1	19.1	20.3	50.0	20.9	31.6	5.4%
2019-2020	31.6	61.8	30.6	32.6	26.1	28.0	67.0	46.1	123.8	58.9	63.8	19.3	29.4	10.2%
<b>SAN BERNARDINO</b>														
2018-2019	41.8	29.8	113.6	62.4	30.6	49.8	52.5	35.0	40.3	23.1	31.1	19.3	18.1	3.1%
2019-2020	18.1	51.1	41.1	93.5	13.5	35.4	18.0	25.9	100.5	30.0	44.8	9.0	28.8	10.0%
<b>VENTURA</b>														
2018-2019	4.8	8.8	9.9	8.0	35.4	7.2	22.1	7.6	27.5	21.6	7.3	7.5	6.3	1.1%
2019-2020	6.3	5.0	2.8	6.5	11.9	4.0	8.7	7.7	9.8	4.3	3.7	5.0	11.7	4.1%
<b>REGION</b>														
2018-2019	563.5	499.7	598.5	576.7	704.9	1,201.3	663.6	452.8	368.8	312.6	804.7	658.9	588.8	100.0%
2019-2020	588.8	588.4	392.2	524.3	262.0	215.3	267.7	332.1	590.8	256.5	428.5	223.7	287.0	100.0%

Prepared by Modeling and Forecasting Department  
 Southern California Association of Governments (SCAG)  
 Source: Construction Industry Research Board

FIGURE 23

**Taxable Sales**  
**Total All Outlets and Retail**  
 2016-2020  
 (Billions of Dollars)



\* Figure 23 is based on combined total for the region's counties.

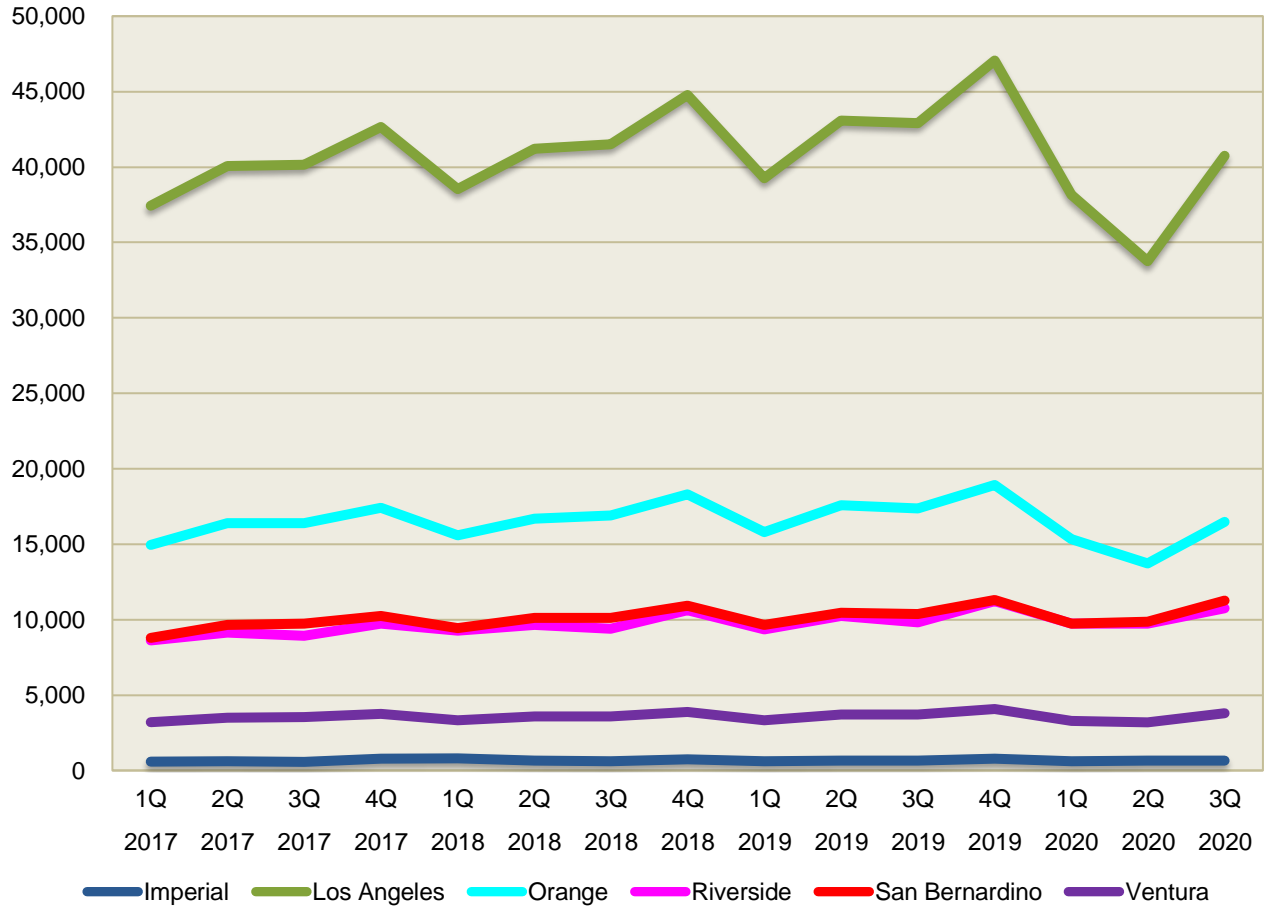


FIGURE 24

**Taxable Sales (Total All Outlets )**

Southern California Association of  
Governments' Counties

2016-2020



**TABLE 14 SCAG REGION TAXABLE SALES (MILLIONS, TOTAL ALL OUTLETS)**

COUNTY/MSA	2017				2018				2019				2020			% of Region Total Latest Quarter
	1Q	2Q	3Q	4Q	1Q	2Q	3Q	4Q	1Q	2Q	3Q	4Q	1Q	2Q	3Q	
<b>IMPERIAL</b>																
2016-2019	587	595	588	792	804	670	593	727	629	673	669	794	621	635	650	0.8%
<b>LOS ANGELES</b>																
2016-2019	37,436	40,062	40,139	42,643	38,523	41,219	41,490	44,792	39,276	43,068	42,912	47,058	38,140	33,761	40,739	48.7%
<b>ORANGE</b>																
2016-2019	14,933	16,398	16,386	17,432	15,584	16,691	16,893	18,301	15,819	17,578	17,366	18,927	15,332	13,724	16,461	19.7%
<b>RIVERSIDE</b>																
2016-2019	8,620	9,129	8,911	9,748	9,250	9,646	9,395	10,629	9,373	10,223	9,804	11,227	9,715	9,752	10,754	12.9%
<b>SAN BERNARDINO</b>																
2016-2019	8,788	9,654	9,730	10,227	9,419	10,102	10,113	10,920	9,637	10,445	10,384	11,302	9,741	9,851	11,244	13.4%
<b>VENTURA</b>																
2016-2019	3,196	3,519	3,533	3,754	3,312	3,562	3,589	3,861	3,318	3,709	3,699	4,075	3,277	3,190	3,784	4.5%
<b>REGION</b>																
2016-2019	73,560	79,356	79,287	84,596	76,892	81,890	82,073	89,228	78,052	85,696	84,833	93,382	76,827	70,913	83,631	100.0%

Prepared by Research, Analysis and Information Services Department  
Southern California Association of Governments (SCAG)  
Source: California Board of Equalization

**TABLE 15 SCAG REGION TAXABLE SALES (MILLIONS, RETAIL STORES)**

COUNTY/MSA	2017				2018				2019				2020			% of Region Total Latest Quarter
	1Q	2Q	3Q	4Q	1Q	2Q	3Q	4Q	1Q	2Q	3Q	4Q	1Q	2Q	3Q	
<b>IMPERIAL</b>																
2016-2019	405	412	402	493	434	428	401	516	434	458	429	532	435	384	420	0.7%
<b>LOS ANGELES</b>																
2016-2019	26,771	28,517	28,359	30,651	27,732	29,443	29,742	32,228	28,081	30,737	30,479	33,148	27,205	23,954	29,662	49.8%
<b>ORANGE</b>																
2016-2019	10,156	11,004	11,106	11,999	10,602	11,395	11,575	12,506	10,688	11,867	11,808	12,772	10,318	9,422	11,506	19.3%
<b>RIVERSIDE</b>																
2016-2019	6,200	6,418	6,228	7,009	6,645	6,922	6,769	7,707	6,763	7,334	6,970	7,996	6,917	6,986	7,680	12.9%
<b>SAN BERNARDINO</b>																
2016-2019	5,929	6,367	6,365	6,942	6,292	6,682	6,661	7,271	6,322	6,915	6,856	7,492	6,317	6,554	7,479	12.6%
<b>VENTURA</b>																
2016-2019	2,329	2,540	2,561	2,771	2,428	2,602	2,628	2,828	2,413	2,687	2,682	2,913	2,398	2,326	2,759	4.6%
<b>REGION</b>																
2016-2019	51,790	55,259	55,021	59,865	54,133	57,471	57,777	63,057	54,701	59,999	59,225	64,854	53,591	49,627	59,506	100.0%

Prepared by Research, Analysis and Information Services Department  
Southern California Association of Governments (SCAG)  
Source: California Board of Equalization



## MAIN OFFICE

### LOS ANGELES

900 Wilshire Blvd., Ste. 1700  
Los Angeles, CA 90017  
T: (213) 236-1800

## REGIONAL OFFICES

### IMPERIAL COUNTY

1503 North Imperial Ave., Ste. 104  
El Centro, CA 92243  
T: (213) 236-1967

### ORANGE COUNTY

600 South Main St., Ste. 741  
Orange, CA 92868  
T: (213) 236-1997

### RIVERSIDE COUNTY

3403 10th St., Ste. 805  
Riverside, CA 92501  
T: (213) 236-1926

### SAN BERNARDINO COUNTY

Santa Fe Depot  
1170 West 3rd St., Ste. 140  
San Bernardino, CA 92410  
T: (213) 236-1925

### VENTURA COUNTY

4001 Mission Oaks Blvd., Ste. L  
Camarillo, CA 93012  
T: (213) 236-1960