



SOUTHERN CALIFORNIA
ASSOCIATION OF GOVERNMENTS
900 Wilshire Blvd., Ste. 1700
Los Angeles, CA 90017
T: (213) 236-1800
www.scag.ca.gov

REGIONAL COUNCIL OFFICERS

President
**Jan C. Harnik, Riverside County
Transportation Commission**

First Vice President
Carmen Ramirez, County of Ventura

Second Vice President
Art Brown, Buena Park

Immediate Past President
Clint Lorimore, Eastvale

COMMITTEE CHAIRS

Executive/Administration
**Jan C. Harnik, Riverside County
Transportation Commission**

Community, Economic &
Human Development
Frank Yokoyama, Cerritos

Energy & Environment
Deborah Robertson, Rialto

Transportation
Ray Marquez, Chino Hills

REMOTE PARTICIPATION ONLY

**RESILIENCE AND
CONSERVATION
SUBCOMMITTEE**

***Monday, September 19, 2022
9:00 a.m. – 11:00 a.m.***

To Attend and Participate on Your Computer:

<https://scag.zoom.us/j/82486482030>

To Attend and Participate by Phone:

Call-in Number: 1-669-900-6833

Meeting ID: 824 8648 2030

***Please see next page for detailed
instructions on how to participate in the meeting.***

PUBLIC ADVISORY

Given the declared state of emergency (pursuant to State of Emergency Proclamation dated March 4, 2020) and local public health directives imposing and recommending social distancing measures due to the threat of COVID-19, and pursuant to Government Code Section 54953(e)(1)(A), the meeting will be held telephonically and electronically.

If members of the public wish to review the attachments or have any questions on any of the agenda items, please contact Maggie Aguilar at (213) 630-1420 or via email at aguilarm@scag.ca.gov. Agendas & Minutes are also available at: www.scag.ca.gov/committees.

SCAG, in accordance with the Americans with Disabilities Act (ADA), will accommodate persons who require a modification of accommodation in order to participate in this meeting. SCAG is also committed to helping people with limited proficiency in the English language access the agency's essential public information and services. You can request such assistance by calling (213) 630-1420. We request at least 72 hours (three days) notice to provide reasonable accommodations and will make every effort to arrange for assistance as soon as possible.



Instructions for Public Comments

You may submit public comments in two (2) ways:

1. **In Writing:** Submit written comments via email to: ePublicComment@scag.ca.gov by **5pm on Friday, September 16, 2022**. You are **not** required to submit public comments in writing or in advance of the meeting; this option is offered as a convenience should you desire not to provide comments in real time as described below.

All written comments received after 5pm on Friday, September 16, 2022, will be announced and included as part of the official record of the meeting.

2. **In Real Time:** If participating in real time via Zoom or phone, during the Public Comment Period (Matters Not on the Agenda) or at the time the item on the agenda for which you wish to speak is called, use the “raise hand” function on your computer or *9 by phone and wait for SCAG staff to announce your name/phone number. SCAG staff will unmute your line when it is your turn to speak. Limit oral comments to 3 minutes, or as otherwise directed by the presiding officer. For purpose of providing public comment for items listed on the Consent Calendar, please indicate that you wish to speak when the Consent Calendar is called; items listed on the Consent Calendar will be acted on with one motion and there will be no separate discussion of these items unless a member of the legislative body so requests, in which event, the item will be considered separately.

If unable to connect by Zoom or phone and you wish to make a comment, you may submit written comments via email to: ePublicComment@scag.ca.gov.

In accordance with SCAG’s Regional Council Policy, Article VI, Section H and California Government Code Section 54957.9, if a SCAG meeting is “willfully interrupted” and the “orderly conduct of the meeting” becomes unfeasible, the presiding officer or the Chair of the legislative body may order the removal of the individuals who are disrupting the meeting.

OUR MISSION

To foster innovative regional solutions that improve the lives of Southern Californians through inclusive collaboration, visionary planning, regional advocacy, information sharing, and promoting best practices.

OUR VISION

Southern California’s Catalyst for a Brighter Future

OUR CORE VALUES

Be Open | Lead by Example | Make an Impact | Be Courageous



Instructions for Participating in the Meeting

SCAG is providing multiple options to view or participate in the meeting:

To Participate and Provide Verbal Comments on Your Computer

1. Click the following link: <https://scag.zoom.us/j/82486482030>
2. If Zoom is not already installed on your computer, click “Download & Run Zoom” on the launch page and press “Run” when prompted by your browser. If Zoom has previously been installed on your computer, please allow a few moments for the application to launch automatically.
3. Select “Join Audio via Computer.”
4. The virtual conference room will open. If you receive a message reading, “Please wait for the host to start this meeting,” simply remain in the room until the meeting begins.
5. During the Public Comment Period, use the “raise hand” function located in the participants’ window and wait for SCAG staff to announce your name. SCAG staff will unmute your line when it is your turn to speak. Limit oral comments to 3 minutes, or as otherwise directed by the presiding officer.

To Listen and Provide Verbal Comments by Phone

1. Call **(669) 900-6833** to access the conference room. Given high call volumes recently experienced by Zoom, please continue dialing until you connect successfully.
2. Enter the **Meeting ID: 824 8648 2030**, followed by #.
3. Indicate that you are a participant by pressing # to continue.
4. You will hear audio of the meeting in progress. Remain on the line if the meeting has not yet started.
5. During the Public Comment Period, press *9 to add yourself to the queue and wait for SCAG staff to announce your name/phone number. SCAG staff will unmute your line when it is your turn to speak. Limit oral comments to 3 minutes, or as otherwise directed by the presiding officer.

OUR MISSION

To foster innovative regional solutions that improve the lives of Southern Californians through inclusive collaboration, visionary planning, regional advocacy, information sharing, and promoting best practices.

OUR VISION

Southern California’s Catalyst for a Brighter Future

OUR CORE VALUES

Be Open | Lead by Example | Make an Impact | Be Courageous



RESILIENCE AND CONSERVATION SUBCOMMITTEE AGENDA

Resilience and Conservation Subcommittee *Members – September 2022*

1. **Hon. Kathleen Kelly**
Chair, Palm Desert, RC District 2
2. **Hon. Cindy Allen**
Long Beach, RC District 30
3. **Hon. David Avila**
Yucaipa, SBCTA
4. **Hon. Lorrie Brown**
Ventura, RC District 47
5. **Hon. Margaret Clark**
Rosemead, RC District 32
6. **Hon. Peggy Huang**
TCA Representative
7. **Hon. Trish Kelley**
Mission Viejo, OCCOG
8. **Hon. Anni Marshall**
Avalon, GCCOG
9. **Hon. Cynthia Moran**
Chino Hills, SBCTA
10. **Hon. Oscar Ortiz**
Indio, CVAG
11. **Hon. Nicholas Schultz**
Burbank, AVCJPA
12. **Hon. Wes Speake**
Corona, WRCOG

OUR MISSION

To foster innovative regional solutions that improve the lives of Southern Californians through inclusive collaboration, visionary planning, regional advocacy, information sharing, and promoting best practices.

OUR VISION

Southern California's Catalyst for a Brighter Future

OUR CORE VALUES

Be Open | Lead by Example | Make an Impact | Be Courageous



RESILIENCE AND CONSERVATION SUBCOMMITTEE AGENDA

Southern California Association of Governments
Remote Participation Only
Monday, September 19, 2022
9:00 AM

The Resilience and Conservation Subcommittee may consider and act upon any of the items on the agenda regardless of whether they are listed as Information or Action items.

CALL TO ORDER AND PLEDGE OF ALLEGIANCE *(The Honorable Kathleen Kelly, Chair)*

PUBLIC COMMENT PERIOD (Matters Not on the Agenda)

This is the time for persons to comment on any matter pertinent to SCAG's jurisdiction that is **not** listed on the agenda. Although the committee may briefly respond to statements or questions, under state law, matters presented under this item cannot be discussed or acted upon at this time. Public comment for items listed on the agenda will be taken separately as further described below.

General information for all public comments: Members of the public are encouraged, but not required, to submit written comments by sending an email to: ePublicComment@scag.ca.gov by 5pm on Friday, September 16, 2022. Such comments will be transmitted to members of the legislative body and posted on SCAG's website prior to the meeting. Any writings or documents provided to a majority of the Resilience and Conservation Subcommittee regarding any item on this agenda (other than writings legally exempt from public disclosure) are available at the Office of the Clerk, located at 900 Wilshire Blvd., Suite 1700, Los Angeles, CA 90017 during normal business hours and/or by contacting the office by phone, (213) 630-1420, or email to aguilarm@scag.ca.gov. Written comments received after 5pm on Friday, September 16, 2022, will be announced and included as part of the official record of the meeting. Members of the public wishing to verbally address the Resilience and Conservation Subcommittee in real time during the meeting will be allowed up to a total of 3 minutes to speak on items on the agenda, with the presiding officer retaining discretion to adjust time limits as necessary to ensure efficient and orderly conduct of the meeting. The presiding officer has the discretion to equally reduce the time limit of all speakers based upon the number of comments received. If you desire to speak on an item listed on the agenda, please wait for the chair to call the item and then indicate your interest in offering public comment by either using the "raise hand" function on your computer or pressing *9 on your telephone. For purpose of providing public comment for items listed on the Consent Calendar (if there is a Consent Calendar), please indicate that you wish to speak when the Consent Calendar is called; items listed on the Consent Calendar will be acted upon with one motion and there will be no separate discussion of these items unless a member of the legislative body so requests, in which event, the item will be considered separately.



RESILIENCE AND CONSERVATION SUBCOMMITTEE AGENDA

REVIEW AND PRIORITIZE AGENDA ITEMS

ACTION ITEMS

1. SELECTION OF VICE CHAIR

INFORMATION ITEMS

2. Proposed Resilience and Conservation Subcommittee Outlook 35 Mins.
(Kimberly Clark, Program Manager II, SCAG)

3. Proposed Resilience Definitions 20 Mins.
(Lorianne Esturas, Assistant Regional Planner, SCAG)

4. Overview of Resilience and Conservation Goals, Policies, and Strategies from Connect SoCal 2020 35 Mins.
(Emily Rotman, Assistant Regional Planner, SCAG)

ANNOUNCEMENTS

ADJOURNMENT



AGENDA ITEM 2
REPORT

Southern California Association of Governments
Remote Participation Only
September 19, 2022

To: Resilience and Conservation Subcommittee (RCS)

**EXECUTIVE DIRECTOR'S
APPROVAL**

From: Kimberly Clark, Program Manager II
(213) 236-1844, clark@scag.ca.gov

Subject: Proposed Resilience and Conservation Subcommittee Outlook

RECOMMENDED ACTION:

Information Only – No Action Required

STRATEGIC PLAN:

This item supports the following Strategic Plan Goal 1: Produce innovative solutions that improve the quality of life for Southern Californians.

EXECUTIVE SUMMARY:

In January 2021, SCAG’s Regional Council unanimously adopted Resolution 21-628-1 (attached) to promote climate adaptation, mitigation and resilience across Southern California’s six-county region that is home to nearly 19 million people. The Regional Council resolved to develop a framework to help the region plan and prepare for a changing climate as well as potential near- and long-term disruptions to Southern California, such as earthquakes, extreme weather, drought, wildfires, pandemics and economic shocks. The Resolution includes a commitment to incorporate climate adaptation and mitigation analysis and strategies in Connect SoCal 2024. As a means of implementing this Resolution and integrating Regional Council priorities related to hazard mitigation and resilience in the context of regional growth, the Special Connect SoCal 2024 Subcommittee on Resilience & Resource Conservation will develop recommended policies and strategies for potential inclusion in the Plan.

BACKGROUND:

The Special Connect SoCal 2024 Subcommittee on Resilience & Resource Conservation will focus on regional hazard mitigation and climate adaptation, including early action to support Southern California’s growth. It is anticipated that by 2050 our region will add more than 1.7 million people, with a significant 15% increase in employment from 2019. Concurrent with this projected growth, our region is also expected to experience shocks and stressors related to climate change, such as increased wildfire, extreme heat, drought, and rising sea levels, as well as seismic events, that will negatively impact public health, welfare, and the greater economy. Our region’s household and economic growth could be significantly affected by these hazards as well as their associated impacts

on essential resources, with particularly acute and disproportionate impacts on vulnerable communities. Significant regional public health and economic benefits could accrue if targeted strategies and investments are prioritized now to address potential impacts of climate and seismic related shocks and stressors.

POLICY QUESTION: How can Connect SoCal 2024 mitigate and adapt to the impacts of climate and seismic-related hazards on our built and natural systems and increase our region's resilience?

PROPOSED RESILIENCE & CONSERVATION SUBCOMMITTEE GOALS:

- *Advance the direction set in Regional Council Resolution 21-628-1 on Climate Change Action to consider opportunities for enhanced resilience & resource conservation.*
- *Develop recommendations on how Connect SoCal 2024 can support communities in adapting to changing conditions and mitigating risks to become more resilient.*

Meeting 1 - September 19: Where We Are - Level Setting & Work Plan Prioritization

Meeting 1 will “set the table” for the Subcommittee on Resilience & Conservation by providing the group with an overview of the Subcommittee’s purpose and proposed outlook, SCAG’s sphere of influence, Connect SoCal 2020’s related goals and strategies, Connect SoCal 2024 preliminary goals, , as well as SCAG’s recently launched Regional Resilience Framework. We will establish a baseline understanding of existing conditions before starting a more detailed policy and implementation discussion in subsequent meetings.

Meeting 2 - October 17: How SCAG Can Have an Impact – Policy Areas of Focus & Implementation Tools

In Meeting 2, SCAG staff will provide a brief presentation looking at potential climate-related shocks and stressors that may impact local communities, as well as resilience and conservation needs in the context of growth and essential resources. This session will include a facilitated discussion that provokes dialogue on the key policy areas that should be included in Connect SoCal and how to materialize resilience and conservation centered planning and investments in the region.

Meeting 3 – November 21: What SCAG Should Do To Strengthen Resilience – Resilience Policy Discussion

In Meeting 3, the Subcommittee will discuss how Connect SoCal can include meaningful policies and strategies that support resilience outcomes and conservation at the local and regional level. Staff will summarize what we have learned over the course of the Subcommittee and will provide draft approaches and recommendations for consideration in the upcoming 2024Plan. Feedback will be solicited on an outline of a draft Resilience and Resource Conservation White Paper.

Meeting 4 – January 23: Resilience & Conservation Subcommittee Recommendations & Final White Paper



In Meeting 4, staff will provide an overview of the Final White Paper, secure final revisions and approvals on core recommendations, and close out the Subcommittee.

FISCAL IMPACT:

Work for this item is covered under OWP item 065.4858.01, Regional Resiliency Analysis.

ATTACHMENT(S):

1. PowerPoint Presentation - Proposed Resilience & Conservation Subcommittee Outlook
2. Resolution No. 21-628-1 Climate Change Action Resolution



Proposed Resilience & Conservation Subcommittee Outlook

September 19, 2022

WWW.SCAG.CA.GOV

Connect SoCal 2024

- Regional Transportation Plan/
Sustainable Communities Strategy
- Updated Every Four Years
- Long-Term Vision & Investment Framework
- Integrated Regional Development Pattern & Transportation Network
- Reduce GHG Emission to Meet Targets for Passenger Vehicles
- Revenues = Costs
- Meets Regional Emission Standards
- Public Involvement

Connect SoCal 2024: Development Update



COMPLETED MILESTONES

- ✓ 2024 RTP/SCS Framework
- ✓ Subregional SCS Framework & Guidelines
- ✓ Relaunched Working Groups
- ✓ Internal Organization, Consultant Support, Technical Infrastructure
- ✓ Connect SoCal Policy Development Framework



MILESTONES FOR 2022

- Goals & Vision
- Performance Measures
- Local Data Exchange
- Project List

Connect SoCal 2024 Special Subcommittees: Overview



**NEXT GENERATION
INFRASTRUCTURE**



**RESILIENCE &
CONSERVATION**



**RACIAL EQUITY AND
REGIONAL PLANNING**

PURPOSE

Dive deeper into key areas for Connect SoCal and provide recommendations to the Policy Committees on how to address these issues in the plan

REPRESENTATION

Members from each county with invited participation from business or civic leaders and practitioners

DURATION

4 meetings between September 2022 and January 2023

Policy Question at Hand



How can Connect SoCal mitigate and adapt to the impacts of climate and seismic-related hazards on our built and natural systems and increase our region's resilience?

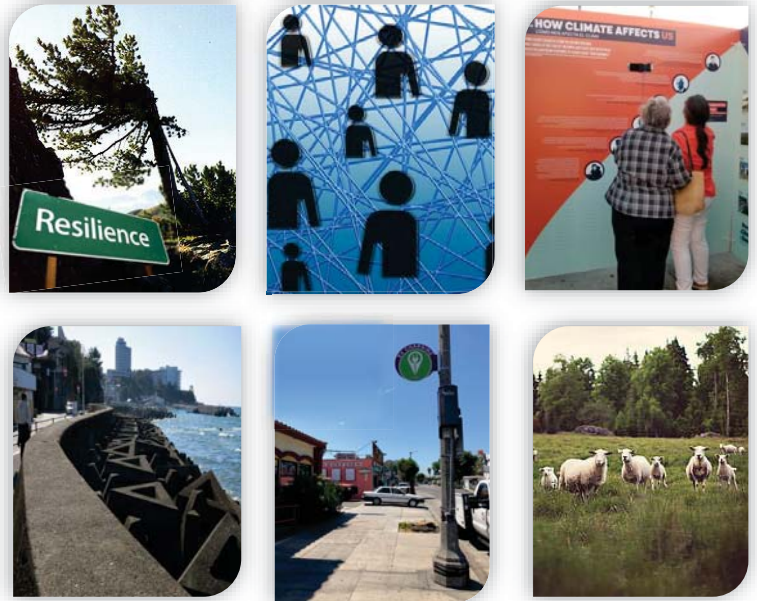
Proposed Goals Resilience & Conservation Subcommittee

Advance the direction set in the SCAG Regional Council Resolution on Climate Change Action to consider opportunities for enhanced resilience & resource conservation

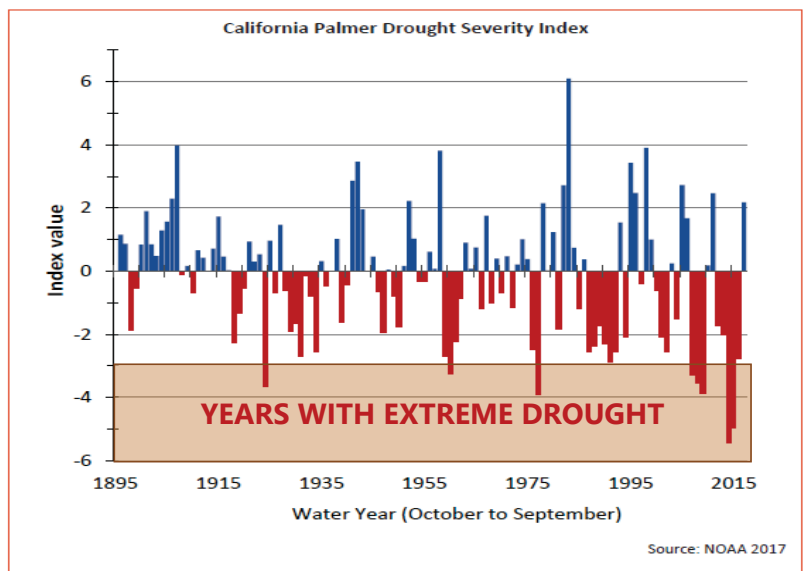
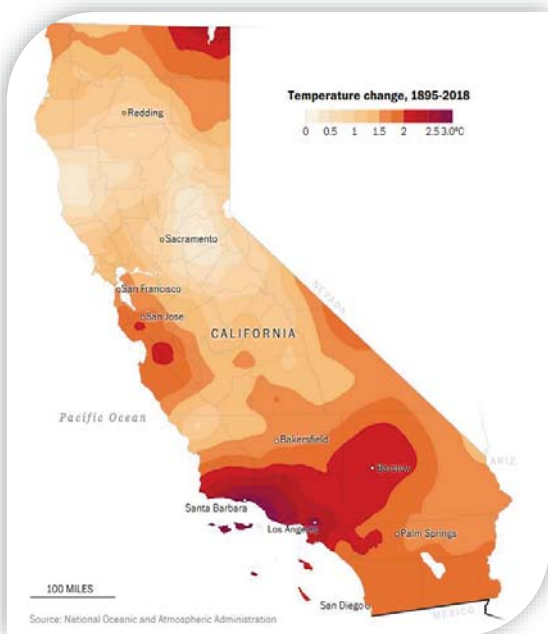
Develop recommendations on how Connect SoCal can support our communities in adapting to changing conditions or mitigating risks to become more resilient

SCAG's Climate Action Resolution

- **Climate Adaptation & Mitigation Analysis and Strategies in Connect SoCal 2024**
- **Regional Resilience Framework**
- Regional Climate Planning Network
- Climate Programs and Outreach
- Economic and Job Creation Benefits of Climate Adaptation & Mitigation
- Accelerated Electrification Strategy
- Local Climate Adaptation and Mitigation Initiatives
- Quarterly Progress Reports to the Energy & Environment Committee (EEC)

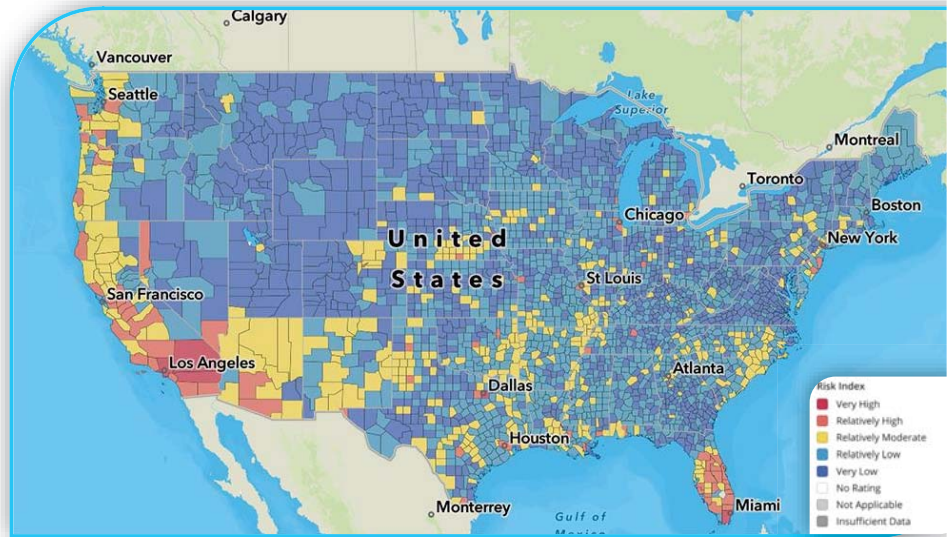


Climate Change Impacts in the SCAG Region



FEMA National Risk Index

- In October 2020, FEMA identified Southern California as one of the most vulnerable areas in the U.S. due to natural hazards
- Los Angeles County is the most at-risk nationwide
- Riverside County and San Bernardino County are amongst the 10 highest at-risk counties in the U.S.



Impacts of Climate Change on Individuals and Communities

-  *Extreme Heat*
-  *Sea Level Rise/Coastal Flooding and Erosion*
-  *Severe Storms/Wind*
-  *Inland Flooding*
-  *Drought*
-  *Wildfire*
-  *Air Quality and Vector Borne Diseases*
-  *Landslides*
-  *Pests and Ecological Hazards*



Resilience & Conservation: Look Ahead

| # | DATE | TOPIC |
|---|---------------------|----------------------------------------------------------------------------------------|
| 1 | September 19 | Where We Are <i>Level Setting & Work Plan Prioritization</i> |
| 2 | October 17 | How Can SCAG Have an Impact <i>Policy Areas of Focus & Implementation Tools</i> |
| 3 | November 21 | What SCAG Should Do to Strengthen Resilience <i>Resilience Policy Discussion</i> |
| 4 | January 23 | Resilience & Conservation Subcommittee Recommendations <i>Final White Paper</i> |



THANK YOU!

For more information, please visit:

<https://scag.ca.gov/>



RESOLUTION NO. 21-628-1

A RESOLUTION OF THE SOUTHERN CALIFORNIA ASSOCIATION OF GOVERNMENTS AFFIRMING A CLIMATE EMERGENCY IN THE SCAG REGION AND CALLING ON LOCAL AND REGIONAL PARTNERS TO JOIN TOGETHER TO IMPROVE REGIONAL RESILIENCE AND REDUCE HAZARDS FROM A CHANGING CLIMATE

SOUTHERN CALIFORNIA ASSOCIATION OF GOVERNMENTS 900 Wilshire Blvd., Ste. 1700 Los Angeles, CA 90017 T: (213) 236-1800 www.scag.ca.gov

REGIONAL COUNCIL OFFICERS

- President Rex Richardson, Long Beach
First Vice President Clint Lorimore, Eastvale
Second Vice President Jan C. Harnik, Riverside County Transportation Commission
Immediate Past President Alan D. Wapner, San Bernardino County Transportation Authority

COMMITTEE CHAIRS

- Executive/Administration Rex Richardson, Long Beach
Community, Economic & Human Development Jorge Marquez, Covina
Energy & Environment David Pollock, Moorpark
Transportation Cheryl Viegas-Walker, El Centro

WHEREAS, the Southern California Association of Governments (SCAG) is the largest metropolitan planning organization (MPO) in the United States covering six counties (Imperial, Los Angeles, Orange, Riverside, San Bernardino and Ventura), and serving approximately 19 million people within 197 jurisdictions pursuant to 23 USC § 134 et seq. and 49 USC § 5303 et seq.; and

WHEREAS, SCAG is responsible for bringing Southern California's diverse residents and local partners together with unifying regional plans, policies, and programs that result in more healthy, livable, sustainable, and economically resilient communities; and

WHEREAS, our changing climate represents a threat to the region's economic security, public safety, health and wellness, transportation system, infrastructure, natural systems, and overall quality of life; and

WHEREAS, steadily increasing global temperatures attributable to climate change have heightened the severity, duration, cost and risk of wildfires; are escalating rising sea levels; and are contributing to more frequent extreme weather including intense precipitation, prolonged drought, and excessive heat events; and

WHEREAS, California experienced a record number of dry heat days in 2020 due to a changing climate, and experienced over 6,000 fires that burned millions of acres, making 2020 the largest wildfire season recorded in the state's modern history according to the California Department of Forestry and Fire Protection¹; and

WHEREAS, economic costs from wildfires include resources involved in fighting the fires, damage to property, health care bills, costs of disrupted business, lost tax revenue, and decreased property values, and are estimated to sum to \$10 billion dollars in 2020²; and

1 https://www.fire.ca.gov/stats-events/; Accessed October 12, 2020

2 Cowan, Jill. "How Much Will the Wildfires Cost?" https://www.nytimes.com/2020/09/16/us/california-fires-cost.html. Accessed October 12, 2020.

WHEREAS, wildfires have a direct linkage to respiratory health, and researchers at Stanford University found that recent wildfire smoke in California resulted in over 1,200 preventable deaths³; and

WHEREAS, as witnessed during the COVID-19 pandemic, long-term exposure to poor air quality exacerbated by wildfires increases vulnerability to those experiencing the most severe COVID-19 outcomes; and

WHEREAS, a changing climate presents many potential hazards to Southern California residents now and into the future, since roughly 1.8 million people live in very high fire hazard severity zones, over 300,000 people reside in “100-year”⁴ flood hazard areas, more than 350,000 residents live in areas estimated to be impacted by three feet of sea level rise (conservatively projected to occur by 2050), and over 6 million people live in areas subject to extreme heat health events; and

WHEREAS, heat-related events occurring from 1999 to 2009 resulted in about 11,000 excess hospitalizations in California, and indicators show that the number and intensity of extreme heat-health events will worsen drastically throughout the state by midcentury; and

WHEREAS, the recent 2012-2016 drought was exacerbated by unusual warmth and disproportionately low Sierra Nevada snowpack levels, serving as indicators of projected dry spells in future decades where impacts will likely be worsened by increased heat⁵; and

WHEREAS, one-third of the SCAG region’s residents live in areas recognized as disadvantaged communities and are disproportionately vulnerable to shocks and stresses to their resilience, including heightened health risks from worsening air quality and extreme heat, as well as the resulting economic instability from climate hazards, amongst other concerns⁶; and

WHEREAS, annual costs from climate change hazards are projected to exceed \$113 billion by 2050 – an expense of thousands of dollars per resident in California each year⁷; and

WHEREAS, climate-safe infrastructure offers sustainable and adaptive solutions that can improve resilience in the face of shocks and stresses caused by a changing climate, and can provide well-paying jobs and workforce training opportunities for local residents since every dollar invested in infrastructure generates more than two dollars in economic output and jobs⁸; and

³ Burke, Marshall and Sam Heft-Neal. Indirect mortality from Wildfires in California. <http://www.g-feed.com/2020/09/indirect-mortality-from-recent.html>. Accessed October 12, 2020.

⁴ Areas known as Special Flood Hazard Areas (SFHAs) defined as areas that will be inundated by a flood event having a 1-percent chance of being equaled or exceeded in any given year.

⁵ California’s Fourth Climate Change Assessment Summary Report; California Energy Commission; 2019

⁶ ibid

⁷ ibid

⁸ Paying it Forward: The Path Toward Climate-Safe Infrastructure in California; California Natural Resources Agency; 2018

WHEREAS, impacts from climate change in the SCAG region will be most acutely felt by children, seniors, low income populations, communities of color, and residents with unstable economic or housing situations; and

WHEREAS, disruptions from a changing climate will impact to varying degrees our region’s public health, vulnerable populations, economy, natural resources, built environment, transportation system, housing and water supplies, utility infrastructure and emergency services; and

WHEREAS, the Office of the Governor has issued a series of executive orders that seek to address a range of aspirational climate mitigation and adaptation related goals for achieving carbon neutrality; conserving and managing land and coastal waters; supporting robust zero-emission vehicle deployment; providing cleaner energy sources; forging partnerships and taking actions to help achieve these goals; and

WHEREAS, SCAG has been a leader in advancing the State of California’s Global Warming Solutions Act of 2006 known as AB 32 and the Clean Energy and Pollution Reduction Act of 2015 known as SB 350, through its implementation of Senate Bill 375 (2008), as well as greenhouse gas reduction programs that advance objectives of Senate Bill 32 (2016), which establish targets for greenhouse gas reductions from all sources in California 40 percent below 1990 levels by 2030, and 80 percent below 1990 levels by 2050; and

WHEREAS, Southern California will require transformative change across every sector of the economy in order to achieve 2030 and 2050 greenhouse gas reduction targets, and building a low-carbon economy requires an early start and continuous progress on decarbonization; and

WHEREAS, SCAG’s most recent long-range plan, Connect SoCal, features strategies that will reduce the region’s greenhouse gas emissions and includes goals for the region to adapt to a changing climate, promote conservation of natural and agricultural lands and restoration of habitats, promote healthy and equitable communities, and encourage regional economic prosperity; and

WHEREAS, the Southern California region has successfully adopted a Sustainable Communities Strategy (SCS) that has addressed the California Air Resources Board’s established per-capita greenhouse gas reduction targets since the enactment of Senate Bill 375 over three quadrennial planning cycles; and

WHEREAS, Southern California’s natural and working lands – forests, rangelands, farms, wetlands, coast, deserts, and urban greenspaces – sustain the region’s economy, help to reduce greenhouse gas emissions in the atmosphere, support the region’s unique biodiversity; and

WHEREAS, SCAG is developing a Southern California Greenprint that will be a new online regional mapping tool that will highlight the benefits of natural lands, waters and agricultural lands, including access to parks and trails, habitat protection and connectivity, food production and increased resilience to climate change; and

WHEREAS, SCAG conducted a long-term greenhouse gas reduction analysis for Southern California, i.e. the 2050 Pathways Report, which suggested common areas where local and regional policy actions could focus on decarbonization efforts including energy efficiency, smart growth, and electric vehicles; and

WHEREAS, SCAG has long recognized innovative planning and local planning projects that best coordinate land use and transportation actions to improve the mobility, livability, prosperity, and sustainability within the region through the Green Region Initiative Sustainability Indicators; and

WHEREAS, SCAG established the Sustainable Communities Program to fund local jurisdictions’ natural resource plans, climate action plans (CAPs), and greenhouse gas reduction programs among other initiatives, and has supported over 200 projects since 2005; and

WHEREAS, over 40 jurisdictions in the SCAG region have adopted climate action plans at the local level to reduce their greenhouse gas emissions and better prepare their communities for a changing climate; and

WHEREAS, in parallel to greenhouse gas reduction efforts, it has become clear the region needs to prepare to increase its resilience and adapt to a changing climate; and

WHEREAS, Southern California will need to adapt and become more resilient to the impacts of climate change by implementing strategies and programs at the regional and local level to tackle environmental, social and economic challenges; and

WHEREAS, SCAG has developed a SoCal Climate Adaptation Planning Guide for local jurisdictions to utilize in identifying vulnerable areas and implementing adaptation strategies to reduce climate related hazards in their communities; and

WHEREAS, SCAG launched a Climate Talks Outreach Strategies Toolkit for local jurisdictions and community-based organizations to engage with residents and better understand how climate change is affecting local communities; and

WHEREAS, SCAG’s Climate Adaptation Framework includes tools that help the region to work together to plan and prepare for the impacts of sea level rise, extreme heat, increasingly frequent and damaging wildfires, and other climate-related issues; and

WHEREAS, SCAG is a founding member of the Governor’s Technical Advisory Council for California’s Integrated Climate Adaptation and Resiliency Program (ICARP), established by

SB 246, (2015) to develop a cohesive and coordinated response to the impacts of climate change across the state; and

WHEREAS, consistent with Regional Council Resolution 20-623-2, health, socio-economic, and racial equity considerations should be included in regional policymaking addressing climate hazards and SCAG will work in partnership with others to close the gap of racial injustice and better serve our communities of color, and in so doing, serve all the people of the region.

NOW, THEREFORE, BE IT RESOLVED that the Regional Council of SCAG affirms a commitment to promote regional climate adaptation and resilience, and reduce greenhouse gas emissions, which represent a threat to the region’s economic security, public safety and health, transportation infrastructure, natural systems, and overall quality of life.

BE IT FURTHER RESOLVED:

1. SCAG shall develop a regional resilience framework to help the region plan and prepare for a changing climate, as well as potential near- and long-term disruptions to Southern California, such as earthquakes, extreme weather, drought, wildfires, pandemics and economic shocks.
2. SCAG shall initiate a regional climate planning network that will provide technical assistance for local jurisdictions’ climate planning initiatives – including consensus building exercises and an information hub featuring a framework of effective mitigation strategies for cities and counties to use in climate action plans (CAPs) as well as a library of model policies that collectively foster climate change mitigation, adaptation, and resilience.
3. SCAG shall establish partnerships to support local jurisdictions’ climate adaptation and mitigation initiatives, including identifying funding resources to support Climate Action Plans, General Plan Safety Element updates, local hazard mitigation infrastructure financing plans, electric vehicle permitting, urban heat mitigation plans, organic waste reduction plans, wildlife corridor restoration plans, greenway connectivity master plans, among other efforts.
4. SCAG shall develop a regional advanced mitigation program (RAMP) as envisioned in Connect SoCal for regionally significant transportation projects to mitigate environmental impacts.
5. SCAG shall develop a work plan to advance the Accelerated Electrification strategy adopted in Connect SoCal to provide a holistic and coordinated approach to de-carbonizing or electrifying passenger vehicles, transit and goods movement vehicles to go beyond benefits achieved through state mandates alone.

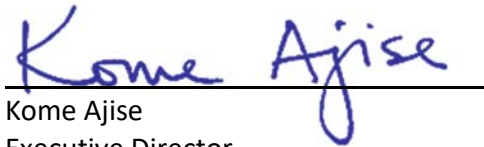
6. SCAG shall evaluate the economic and job creation benefits of climate adaptation and mitigation practices for inclusion in regional planning efforts, and an inclusive economic recovery strategy for Southern California.
7. SCAG shall include climate adaptation and mitigation analysis and strategies in the 2024 Regional Transportation Plan and Sustainable Communities Strategy (RTP/SCS).
8. SCAG shall develop programs and outreach strategies to support near-term adaptation to address regionally significant vulnerabilities in the region and long-term regional resilience planning.
9. SCAG’s Planning Director shall report to the EEC on a quarterly basis on the progress of these efforts.

PASSED, APPROVED AND ADOPTED by the Regional Council of the Southern California Association of Governments at its regular meeting this seventh day of January, 2021.



Rex Richardson
President, SCAG
Councilmember, Long Beach

Attested by:



Kome Ajise
Executive Director

Approved as to Form:



Ruben Duran
Board Counsel



AGENDA ITEM 3
REPORT

Southern California Association of Governments
Remote Participation Only
September 19, 2022

To: Resilience and Conservation Subcommittee (RCS)

**EXECUTIVE DIRECTOR'S
APPROVAL**

From: Kimberly Clark, Program Manager II
(213) 236-1844, clark@scag.ca.gov

Subject: Proposed Resilience Definitions

RECOMMENDED ACTION:

Information Only – No Action Required

STRATEGIC PLAN:

This item supports the following Strategic Plan Goal 1: Produce innovative solutions that improve the quality of life for Southern Californians.

EXECUTIVE SUMMARY:

SCAG staff formed the Resilience Policy Lab in 2020, which consists of staff across the SCAG Planning Division, to develop a working definition of “resilience,” assess existing and potential SCAG work areas to integrate resilience, and identify areas for integrating resilience into Connect SoCal 2024. The proposed resilience definition set the foundation for SCAG staff to establish a shared understanding on resilience for considerations relating to Connect SoCal 2024. Moving forward, SCAG is developing a Regional Resilience Framework to better anticipate a wide range of potential futures and strengthen the resilience and preparedness of the region.

BACKGROUND:

Formed in November 2020 and comprising of staff across SCAG’s Planning Division, the SCAG Resilience Policy Lab aims to (1) ensure engagement with SCAG staff as resilience is integrated into Connect SoCal 2024 and (2) advance the goals under Connect SoCal to develop a Regional Resilience Framework.

The Regional Resilience Framework kicked off in June 2022, and will feature:

- Interviews with community-based organizations and tribal nations to understand concerns related to resilience in local communities
- Resilience Advisory Committee consisting of practitioners from local jurisdictions, subregional and regional partners, county transportation commissions, utilities, etc.
- Resilience Toolkit for local agencies to integrate best practices in day-to-day and long-range planning activities

- Matrix of regional pinch-points (i.e., “shocks” and “stressors”, as defined below) that may impact the current and future resilience of local communities
- Exploratory scenario analysis to examine potential futures for Southern California
- Engagement with SCAG subregional and regional stakeholders, such as council of governments, SCAG policy committees, Regional Council, etc.

As a foundational step to developing a Regional Resilience Framework and to guide SCAG’s ongoing resilience efforts, the Resilience Policy Lab developed the following proposed definition of resilience through a collaborative and iterative process:

“The capacity of the SCAG region’s built, social, economic and natural systems to anticipate and respond to changing conditions, acute shocks, and chronic stressors by creating multiple opportunities for a sustainable, thriving and equitable future.”

This definition benefits from a survey of resilience studies conducted by agencies throughout the United States and Canada, as well as academic articles on the topic.

In the resilience policy space, shocks and stressors are key factors to consider in resilience, and are commonly defined as:

- *Shocks* – Sudden and acute events that threaten immediate safety and well-being
- *Stressors* – Chronic challenges that weaken natural, built, or human systems and resources

Following development of a proposed definition of “resilience,” the Resilience Policy Lab engaged with staff across the Planning Division to conduct a Resilience Assessment of SCAG’s planning work. The objectives of the Resilience Assessment were to:

- Conduct a department-wide assessment to understand how resilience operates in current and future planning work at SCAG
- Refine and ground-truth the Resilience Definition
- Define what resilience means for various work activities (e.g., project, program)
- Identify objective measures of resilience
- Reveal division-wide trends and conceptions on resilience, and create recommendations to ensure that resilience is incorporated into our individual efforts
- Identify opportunities to realign resources to include a greater focus on resilience planning within SCAG’s work plan
- Initiate a process where teams may create a subject specific definition of resilience

From May through June 2021, Resilience Policy Lab members engaged with SCAG Planning Division staff via focus groups and surveys. Following engagement with the SCAG Planning Division, the following key findings were shared:

- Resilience is commonly embedded in SCAG’s work through regular assessments of changing conditions of the systems impacted by SCAG’s work, such as transportation, housing, land use, natural systems, and resources, etc.
- The Resilience Definition was found to be broad and general enough to capture most of the Planning Division’s work areas without limiting resilience to climate change impacts and disruptions
- Staff noted that human, built, economic systems are most directly impacted by SCAG’s work, specifically, transportation, funding, land use, housing, natural areas, and transit-oriented development
- Staff highlighted the importance of exploring the interrelatedness of systems in addition to evaluating each system separately
- Staff highlighted that the primary platform for establishing resilience would be through the next Regional Transportation Plan/Sustainable Communities Strategy (Connect SoCal 2024)

Through the work under the Resilience Policy Lab, SCAG continues to assess changing conditions to create a more sustainable and resilient region. While most of the work undertaken by the Planning Division was found to either directly or indirectly tied into resilience, the following are some of the projects and programs incorporating elements of resilience:

- System preservation
- Performance monitoring
- Multi-modal transportation
- Goods Movement Planning
- Transportation Finance and Transportation Programming
- Integrated Economic Recovery Plan
- Sustainable Communities Strategies
- Corridor Planning
- Scenario Modeling

The Resilience Policy Lab continues to serve as a staff-led forum for integrating resilience into Connect SoCal 2024 and support efforts of the Connect SoCal 2024 Resilience & Conservation Subcommittee.

FISCAL IMPACT:

Work for this item is covered under OWP item 065.4858.01, Regional Resiliency Analysis.

ATTACHMENT(S):

1. PowerPoint Presentation - Proposed Resilience Definitions



Proposed Resilience Definitions

September 19, 2022

WWW.SCAG.CA.GOV

SCAG Recent Resilience Efforts

Nov 2020
Resilience
Policy Lab
Kickoff

Jan-Mar 2021
Proposed
Resilience
Definition

May 2022
Regional
Resilience
Framework
kickoff

Sept 2022
R&C Sub-
committee
kickoff

Jan 2021
Climate
Action
Resolution

**May-Jun
2021**
Resilience
Assessment

Sept 2022
Draft Water
Resolution

Attachment: PowerPoint Presentation - Proposed Resilience Definitions (Proposed Resilience Definitions)

SCAG Internal Resilience Collaboration



Defining "Resilience" for SCAG

Goal: *Create a definition of resilience for the SCAG Planning Division to capture the Division's work in response to the need for a resilient region*

Potential Applications:

- SCAG Policy Committees and working groups
- Inclusive Economic Resilience Strategy
- SCAG Climate Change Action Resolution
- Regional Resilience Framework

For Use By:

- SCAG staff
- Board members
- Consultants
- External stakeholders SCAG interfaces with on matters of resilience

Resilience Level-Setting: Shock vs. Stressor

Shock:

Sudden or acute events that threaten immediate safety and well-being

Examples include:

- *Wildfires*
- *Earthquakes*
- *Floods*
- *Pandemics*

Stressor:

Chronic challenges that weaken natural, built, or human systems and resources

Examples include:

- *Food/water shortages*
- *Aging infrastructure*
- *Poor air quality*
- *High unemployment*

Proposed “Resilience” Definition

The capacity of the SCAG region's built, social, economic and natural systems to anticipate and respond to changing conditions, acute shocks, and chronic stressors by creating multiple opportunities for a sustainable, thriving and equitable future.

Proposed "Resilience" Definition

*The capacity of the SCAG region's **built, social, economic** and **natural systems** to **anticipate and respond to changing conditions, acute shocks, and chronic stressors** by creating multiple opportunities for a **sustainable, thriving and equitable future**.*

Assessing the "Resilience" Definition

- What is SCAG's role in Resilience?
- How does the definition connect to the work within the planning department?
- What are the key threats and changes we must respond to?
- How does resilience differ from planning?
- How does SCAG's resilience work and definition compare to other agencies?



Resilience Assessment & Focus Groups

- Over a 3-week period, staff conducted **structured focus groups** with each Planning Department
- **Feedback** was sought on the Resilience Definition
- Assessment identified how resilience is presently factored into SCAG’s **current and future work**
- Departments could opt to complete a **survey** in place of a focus group



Resilience Assessment – Key Findings

- | | |
|----------------------------------|-----------------------------------------------------------------------------------------------------------------------------------------------------------------------------------------------------------------------------------------------------------------------------------------|
| Definition Feedback | <ul style="list-style-type: none"> → • Broad and general enough to capture most of each departments’ area of planning work. → • Resilience is embedded into SCAG’s work through our regular assessment of systems. |
| Resilience Scoping | <ul style="list-style-type: none"> → • Directly and indirectly impact: Human, built, economic, equity systems. → • Threats to resilience include economic/budget shortfalls, reliance on static forecasting, inadequate or delay in funding, etc. |
| Operationalize Resilience | <ul style="list-style-type: none"> → • Integrate resilience through cross-cutting theme throughout next Connect SoCal. → • Develop metrics to measure asset conditions, shocks and stressors, etc. to gauge resilience. |
| Brainstorm | <ul style="list-style-type: none"> → • Include more scenario planning in future work. |

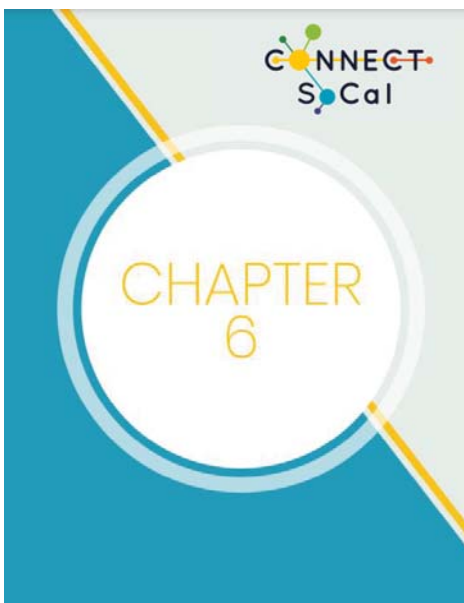
Integrating Resilience & Conservation

Connect SoCal 2020 Goal:

“Promote conservation of natural and agricultural lands and restoration of habitats”

- Conservation of resources, such as water, energy, natural, and working lands is essential for resilience and can support future growth
- A resilient and prepared region necessitates that the transportation system, built environment, essential resources, and natural areas coexist in a well-balanced land use pattern
- When well-coordinated, these components can result in multiple benefits, including greenhouse gas (GHG) emissions reductions, improved health, equity and conservation
- The diverse natural and agricultural landscapes of Southern California are a valuable asset to the region and its residents. These lands support a robust economy, provide clean drinking water, protect the air and host countless recreation activities

Building a More Resilient Region



Looking Ahead: Regional Resilience Framework



[Connect SoCal: Chapter 6
Regional Resilience Framework](#)

- **Define "regional resilience"**
- **Understand the impacts of disruptions (shocks/stressors) across the region**
- Conduct an exploratory scenario planning process
- Identify strategies to reduce vulnerabilities & increase regional resilience
- Conduct meaningful outreach & engagement
- Support implementation of Connect SoCal strategies



THANK YOU!

For more information, please visit:

<https://scag.ca.gov/>



AGENDA ITEM 4
REPORT

Southern California Association of Governments
Remote Participation Only
September 19, 2022

To: Resilience and Conservation Subcommittee (RCS)

**EXECUTIVE DIRECTOR'S
APPROVAL**

From: Kimberly Clark, Program Manager II
(213) 236-1844, clark@scag.ca.gov

Subject: Overview of Resilience and Conservation Goals, Policies, and Strategies
from Connect SoCal 2020

RECOMMENDED ACTION:

Information Only – No Action Required

STRATEGIC PLAN:

This item supports the following Strategic Plan Goal 1: Produce innovative solutions that improve the quality of life for Southern Californians.

EXECUTIVE SUMMARY:

Enhancing resilience, mitigating hazards, and conserving resources are key components of SCAG's regional planning work, and all are critical to implement the vision outlined in Connect SoCal to advance the region's economic vitality, improve mobility options, and grow in a sustainable way that builds healthy and vibrant communities.

The newly established Special Connect SoCal 2024 Subcommittee on Resilience and Conservation is anticipated to meet four times between September 2022 and January 2023, and will focus on hazard mitigation and climate adaptation, including early action to support Southern California's growth. As background information for the Subcommittee's consideration of resilience factors to include in Connect SoCal 2024, this report summarizes goals, policies, strategies, and mitigation measures included in Connect SoCal 2020 and its corresponding PEIR related to resilience and conservation.

BACKGROUND:

Connect SoCal 2020 includes a host of policies and strategies that strengthen regional resilience and support regional resource conservation, importantly the Plan's core vision and key goals and guiding principles. Resilience and conservation strategies in Connect SoCal 2020 traverse diverse topic and issue areas from land use and sustainable development in light of anticipated growth, transportation, emissions and air quality, and equity and environmental justice.

The first meeting of the Special Connect SoCal 2024 Subcommittee on Resilience and Resource Conservation will provide an overview of the regional policy foundation for resilience and resource conservation, including related Connect SoCal 2020 goals, policies, strategies, and Programmatic Environmental Impact Report (PEIR) required mitigation measures.

REGIONAL POLICY FOUNDATION FOR RESILIENCE AND CONSERVATION:

Resilience and conservation are embedded in the core vision, key goals, and guiding principles of Connect SoCal 2020.

The following aspects of the Connect SoCal 2020 core vision aim to advance resilience and resource conservation efforts throughout the region:

- Sustainable Development:
 - Identification of areas well suited for infill and redevelopment while balance natural and farm lands preservation;¹
- System Preservation and Resilience:
 - Maintenance of the operational efficiency of the transportation system;² and
 - \$68 billion in funding to support preservation, operation and resilience needs of the state highway system, and \$47.5 billion towards preservation, operation and resilience needs of regionally significant local streets and roads.³

The following Connect SoCal 2020 goals aim to advance resilience and conservation efforts throughout the region:

- Enhance the preservation, security, and resilience of the regional transportation system;
- Reduce greenhouse gas emissions and improve air quality;
- Support healthy and equitable communities;
- Adapt to a changing climate and support an integrated regional development pattern and transportation network; and
- Promote conservation of natural and agricultural lands and restoration of habitats.⁴

The following Connect SoCal 2020 Guiding Principles aim to advance resilience and resource conservation efforts throughout the region:

- Assure that land use and growth strategies recognize local input, promote sustainable transportation options, and support equitable and adaptable communities; and
- Encourage transportation investments that will result in improved air quality and public health, and reduced greenhouse gas emissions; and

¹ SCAG. Connect SoCal. Pg. 48.

² Ibid. Pg. 38.

³ Ibid. Pg. 57.

⁴ Ibid. Pg 9.

-
- Regionally, transportation investments should reflect best-known science regarding climate change vulnerability, in order to design for long term resilience.⁵

Additionally, Connect SoCal 2020 includes specific strategies and mitigation measures that address resilience and resource conservation. These are described in more detail in Attachment 1 to this staff report.

FISCAL IMPACT:

Work for this item is covered under OWP item 065.4858.01, Regional Resiliency Analysis.

ATTACHMENT(S):

1. PowerPoint Presentation - Connect SoCal 2020 Policies & Strategies

⁵ Ibid. Pg. 10.



Resilience & Resource Conservation in Connect SoCal

September 19, 2022

WWW.SCAG.CA.GOV

Realizing Connect SoCal 2020

Resilience and resource conservation are key parts of the vision outlined in Connect SoCal to advance the region’s economic vitality, improve mobility options, and grow in a sustainable way that builds healthy and vibrant communities



Attachment: PowerPoint Presentation - Connect SoCal 2020 Policies & Strategies (Overview of Resilience and Conservation Goals, Policies,

Connect SoCal 2020: Core Vision & Goals



Enhance the preservation, security, and resilience of the regional transportation system



Reduce greenhouse gas emissions and improve air quality



Support healthy and equitable communities



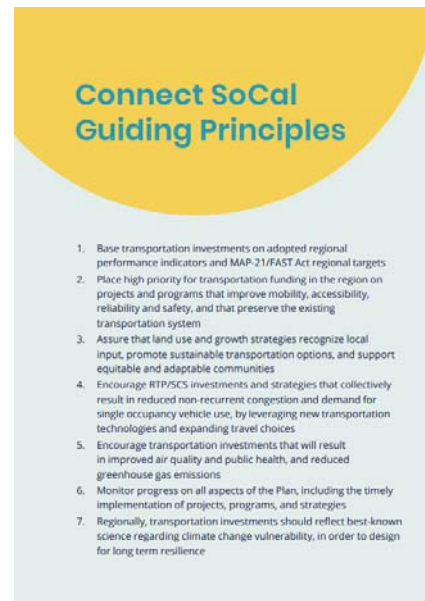
Adapt to a changing climate and support an integrated regional development pattern and transportation network



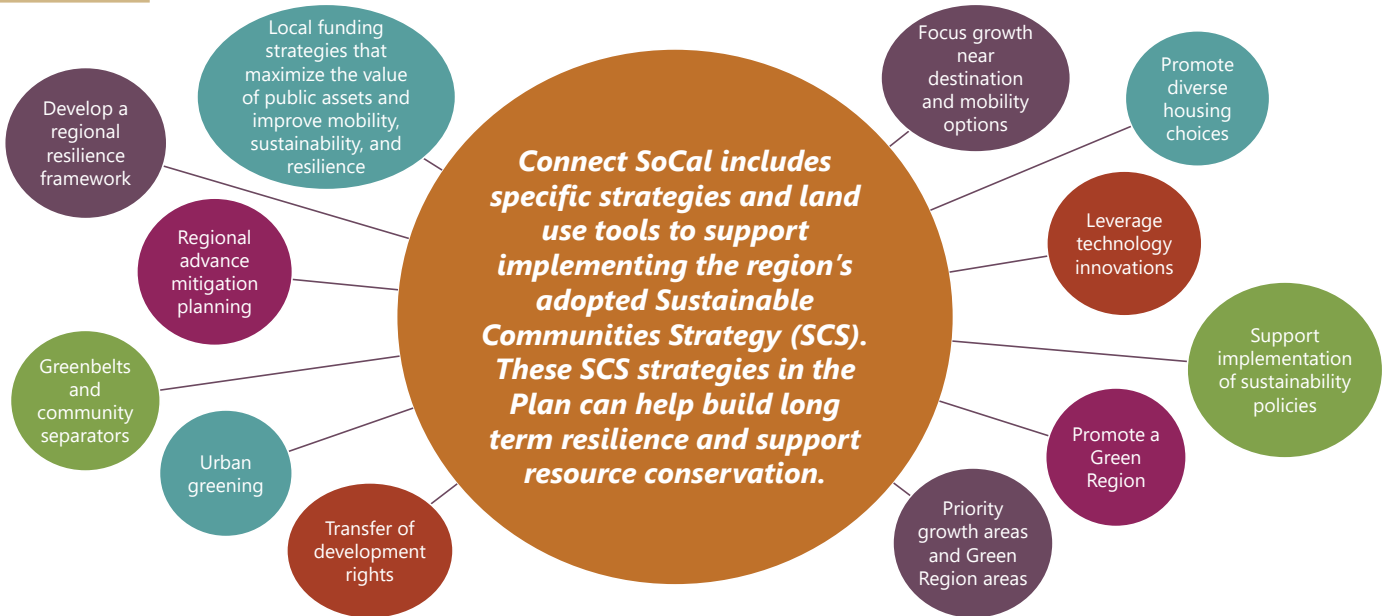
Promote conservation of natural and agricultural lands and restoration of habitats

Connect SoCal 2020: Guiding Principles

- **Land Use & Sustainable Development:**
 - Recognize local input
 - Promote sustainable transportation options
 - Support equitable and adaptation communities
 - Encourage investments that reduce congestion and use of single occupancy vehicles
- **Transportation & Mobility:**
 - Improve mobility, accessibility, reliability, and safety
 - Preserve systems and expand travel choices
 - Encourage investments that improve air quality and public health and reduce emissions
- **Planning:**
 - Monitor progress of the Plan
 - Reflect the best-known science on climate change
 - Design for long-term resilience

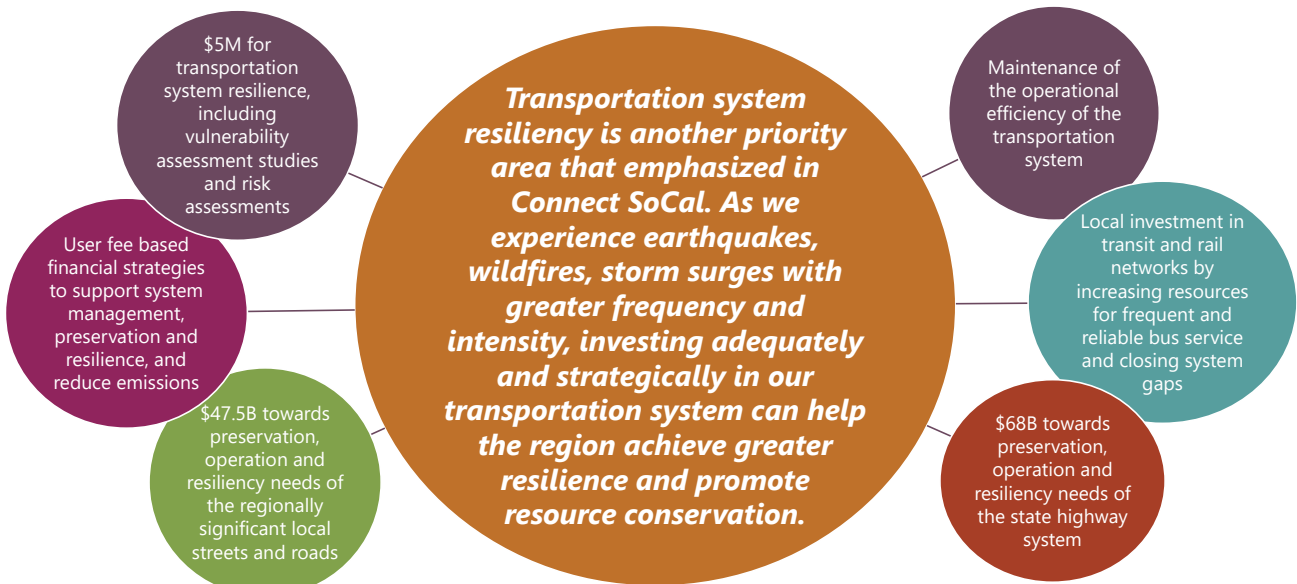


Connect SoCal 2020 Strategies: Land Use & Sustainable Development



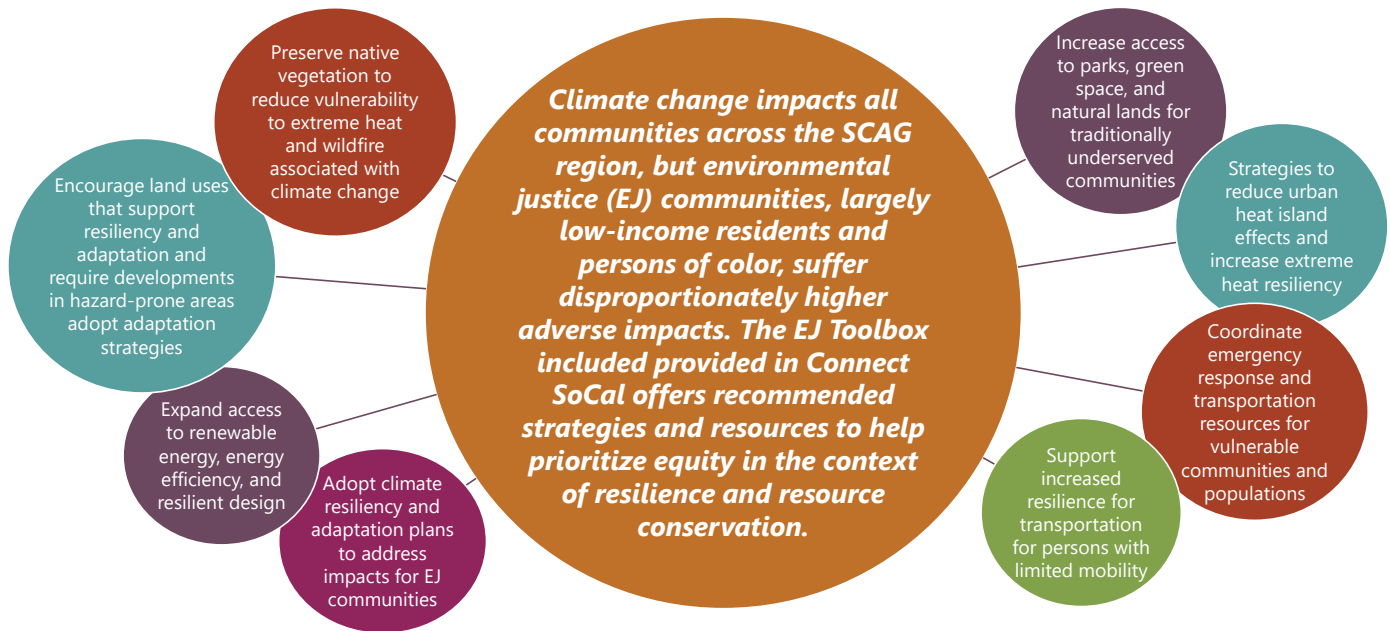
5

Connect SoCal 2020 Strategies: Transportation & Mobility



6

Connect SoCal 2020 Strategies: Equity & Environmental Justice



7

Connect SoCal 2020: PEIR Mitigation Measures

- Required by Section 21081.6 of the California Environmental Quality Act (CEQA) and Section 15097 of the CEQA Guidelines
- Divided into SCAG mitigation measures, and recommended actions for lead agencies
- Verifies satisfaction of the required mitigation measures of the EIR
- Provides a methodology to document implementation of the required mitigation measures
- Provides a record of the Monitoring Program
- Identifies monitoring responsibility
- Establishes administrative procedures for the clearance of mitigation measures
- Establishes the frequency and duration of monitoring
- Utilizes existing review processes wherever feasible



8

Connect SoCal 2020 PEIR Mitigation Measures: Wildfire

- Facilitate minimizing future impacts to fire protection services through information sharing...and examine wildfire risk management strategies in areas where at-risk critical electrical infrastructure is located (SMM WF-1)
- Launch or continue existing initiatives to help local cities and counties to protect communities and economies from the disruption of wildfire occurrences (SMM WF-2)
- Develop a regional resilience program and identify specific strategies to reduce vulnerabilities from natural disasters (SMM WF-3)



Image source: NBC News, of Fairview Fire currently burning in Riverside County

9

Connect SoCal 2020 PEIR Mitigation Measures: Water

- Encourage regional-scale planning for improved water quality, pollution prevention, drainage, wastewater, stormwater, and groundwater management (SMM-USWW-1; SMM HYD-1; SMM HYD-2; SMM HYD-3)
- Encourage regional-scale planning for flood protection (SMM HYD-4)
- Coordinate with local agencies as part of SCAG's Sustainability Program regarding the implementation of Urban Greening, Greenbelts and Community Separator land use strategies (SMM USWS-1)



Image source: Imperial Irrigation District

10

Connect SoCal 2020 PEIR Mitigation Measures: Greenhouse Gases

- Encourage energy efficient design for buildings (*SMM GHG-2*)
- Support deployment of zero-emission vehicles and infrastructure (*SMM GHG-3*)
- Pursue partnerships with SCE, municipal utilities, locally operated electricity providers and CPUC to promote energy efficient development (*SMM GHG-4*)



Image source: SCAG

11

Connect SoCal 2020 PEIR Mitigation Measures: Agriculture & Forestry

- Host a Natural & Farm Lands Conservation Working Group (*SMM AG-1*)
- Develop a Regional Greenprint tool, a strategic web-based conservation tool that provides the best available scientific data and scenario visualizations to help cities, counties and transportation agencies make better land use and transportation infrastructure decisions and conserve natural and farm lands (*SMM AG-2*)
- Align with funding opportunities and pilot programs to implement conservation strategies (*SMM AG-3*)



Image source: Ventura County SOAR

12

Connect SoCal 2020 PEIR Mitigation Measures: Biological Resources

- Develop a regional conservation strategy in coordination with local jurisdictions and other stakeholders...and establish a new Regional Advance Mitigation Program (RAMP) initiative (*SMM BIO-2*)
- Coordinate with Caltrans and facilitate research, programs and policies to identify, protect and restore natural habitat corridors (*SMM BIO-3*)



Image source: OCTA

13

Connect SoCal 2020 PEIR Mitigation Measures: Other Resilience & Conservation

- Encourage diversion of solid waste such as recycling and composting programs (*SMM USSW-1; SMM USSW-2*)
- Minimize substantial soil erosion or loss of topsoil (*SMM-GEO-1*)
- Enhance the region's ability to deter and respond to acts of terrorism, human-caused or natural disasters (*SMM PSP-2*)
- Identify critical infrastructure needs necessary for: a) emergency responders to enter the region, b) evacuation of affected facilities, and c) restoration of utilities (*SMM TRA-7*)
- Provide a forum for collaboration in planning, communication, and information sharing before, during, or after a regional emergency (i.e. seismic activities, wildfires, and other natural disasters) (*SMM TRA-8*)

14



THANK YOU!

For more information, please visit:

<https://scag.ca.gov/connect-socal>