

*Forecasting Immigration and Mobility During the  
Economic Downturn*

John Pitkin, Analysis and Forecasting, Inc.  
email: [john\\_pitkin@earthlink.net](mailto:john_pitkin@earthlink.net)

Presented at the 2009 Annual Demographic Workshop at the  
University of Southern California

June 1, 2009

*What do we now know about levels of  
Mobility and Immigration  
that we did not in 2005?*

We are preparing to update the California  
Demographic Futures projections of California's  
population by nativity and immigrant generation.

These were released in January 2005.

*Immigration assumptions in CDF 2005 projections:*

- (1) Immigration to the U.S. is constant at the average level estimated by the U.S. Census Bureau for 2000-2003 and
- (2) California's share of U.S. immigration at the level observed in 1997-2000.

John Pilkin, for Annual Demographic Workshop at USC, 6/01/2009

*CDF projects Foreign born population*

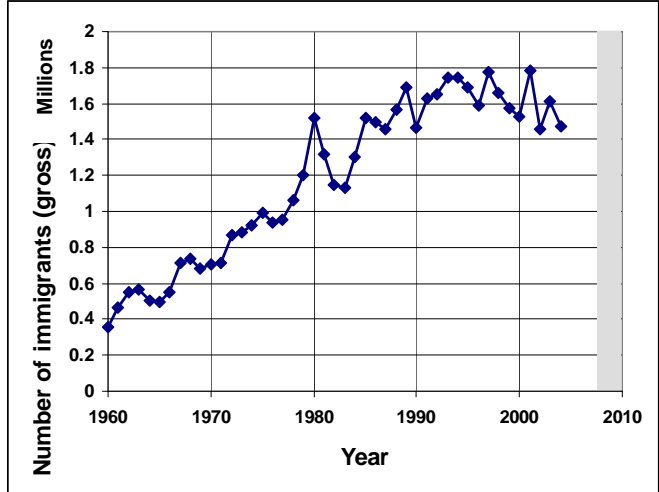
	<b>2000 Census 4/1/2000 (1000s)</b>	<b>CDF (2005) Projection to 1/1/2007 (1000s)</b>
<b>Foreign born</b>	<b>8,864</b>	<b>10,358</b>
<b>Second generation</b>	5,501	6,611
<b>Third+ generation</b>	19,506	20,692
<b>Total</b>	<b>33,872</b>	<b>37,661</b>

**10,358,000 is above the 2005-2007 American Community Survey estimate of 9,848,000,**

**but this excludes some population in group quarters and likely misses some increase. (Reference date is 7/1/2006.)**

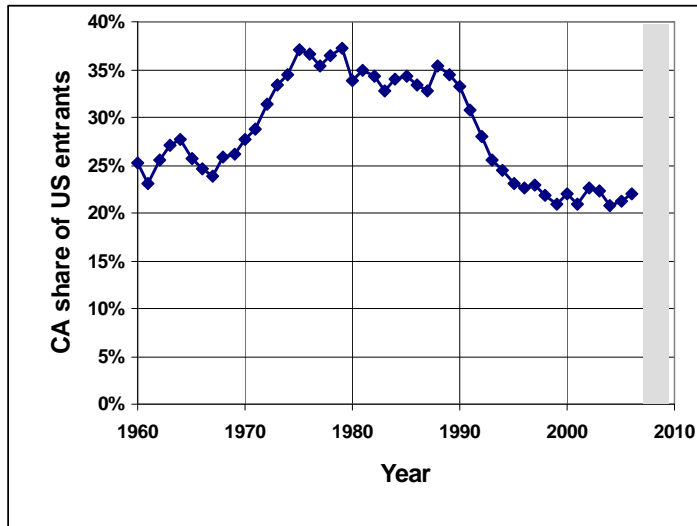
John Pilkin, for Annual Demographic Workshop at USC, 6/01/2009

*ACS shows Immigration to U.S. leveling off*



*John Pitkin, for Annual Demographic Workshop at USC, 6/01/2009*

*ACS shows CA share of Immigration to U.S. is stable*



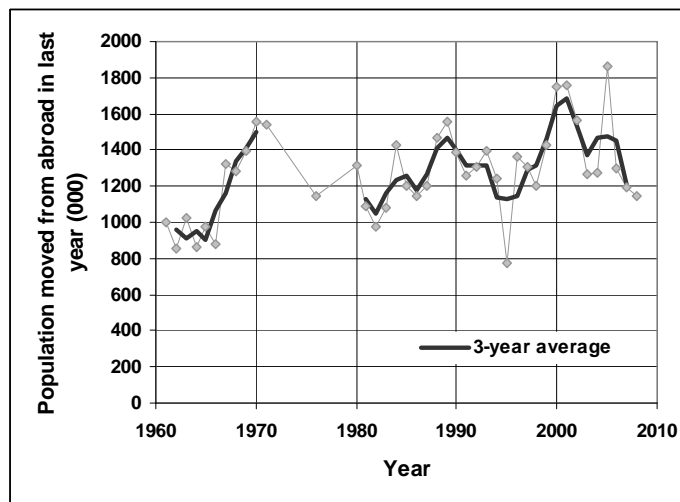
*John Pitkin, for Annual Demographic Workshop at USC, 6/01/2009*

*Conclusion:  
2005 CDF projections of immigration through 2006-  
2007 are consistent with standard estimates*

*However,  
More recent surveys show a sharp decline in  
immigration to the U.S. since 2007.*

John Pitkin, for Annual Demographic Workshop at USC, 6/01/2009

**1. Recent U.S. Current Population Survey (CPS)  
data show a decrease in movers from abroad**



John Pitkin, for Annual Demographic Workshop at USC, 6/01/2009

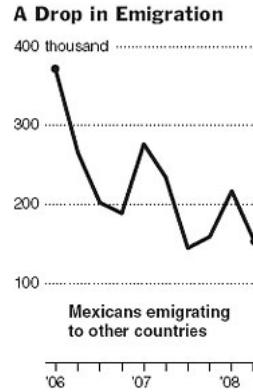
## 2. Mexican Data Show Migration to U.S. in Decline

*New York Times*, May 15, 2009.

Census data from the Mexican government indicate an extraordinary decline in the number of Mexican immigrants going to the United States.

The ... data show that about 226,000 fewer people emigrated from Mexico to other countries during the year that ended in August 2008 than during the previous year, a decline of 25 percent.

**The net outflow of migrants from Mexico — those who left minus those who returned — fell by about half ....**



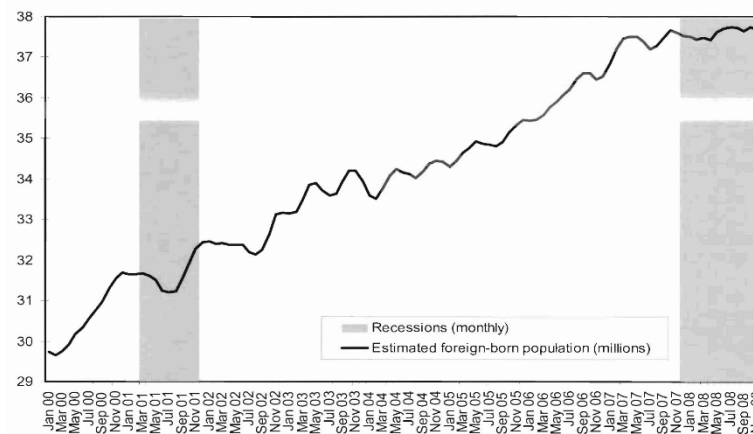
Sources: Mexico's National Statistics, Geography and Information Institute; Jeffrey S. Passel, Pew Hispanic Center

THE NEW YORK TIMES

*John Pilkin, for Annual Demographic Workshop at USC, 6/01/2009*

## 3. CPS monthly data indicate little net growth in Foreign-born population since mid-2007

Figure 1. Monthly Estimate of the US Foreign-Born Population, January 2000 through November 2008



Note: Estimates are based on a three-month moving average.

Source: Migration Policy Institute analysis of US Census Bureau, Basic Current Population Survey, January 2000 to November 2008.

*John Pilkin, for Annual Demographic Workshop at USC, 6/01/2009*

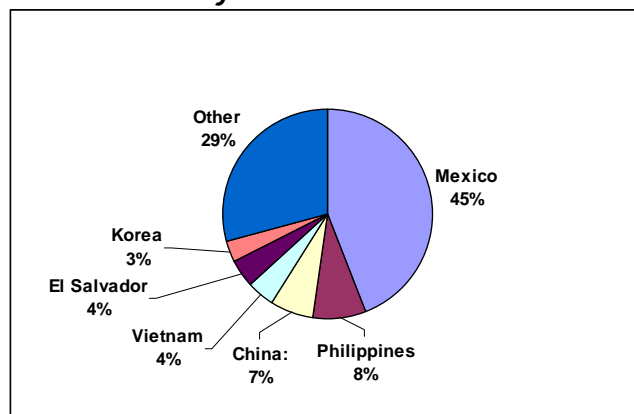
*Conclusion:*  
*California is likely to see a downturn in immigration of similar proportion to the U.S.*

**Questions for the future:**

1. How deep will the downturn be?
2. How long will it last?
3. Will it affect the long-term level of immigration?

John Pitkin, for Annual Demographic Workshop at USC, 6/01/2009

*Long-term outlook will depend on demographics of major source countries*



**Foreign-Born Population of California by Country of Birth**

Source: 2007 American Community Survey

John Pitkin, for Annual Demographic Workshop at USC, 6/01/2009

*Projections of number of potential migrants in major source countries.*

**Stable in Mexico:**

**Population in prime migration age group, age 15-29 years, projected be stable between 2009 and 2025 (Source: U.S. Census Bureau, International Data Base. )**

**By contrast, this age group increased by 25% (net of emigration), 1990-2009.**

John Pitkin, for Annual Demographic Workshop at USC, 6/01/2009

*Projections to 2025 for major source nations show significant declines in demographic pressure to emigrate.*

**Population age 15-29 in**

<b>China</b>	<b>down 21 %</b>
<b>Hong Kong</b>	<b>down 31 %</b>
<b>Taiwan</b>	<b>down 28 %</b>
<b>Korea, South</b>	<b>down 25 %</b>
<b>Vietnam</b>	<b>down 20 %</b>

John Pitkin, for Annual Demographic Workshop at USC, 6/01/2009

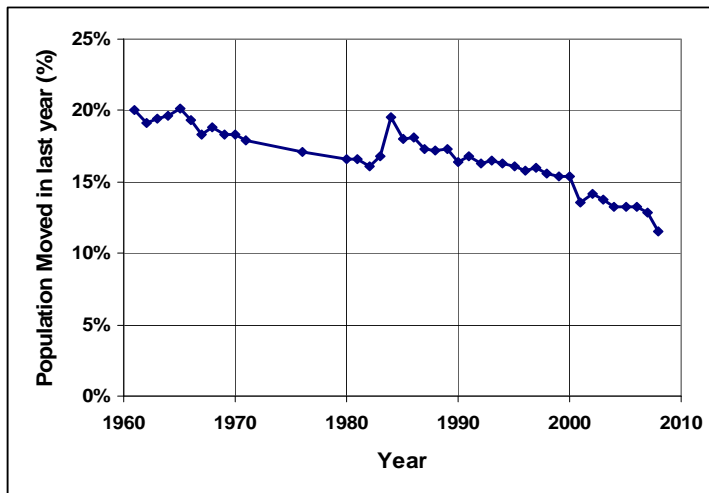
*But projected demographics support continued emigration from other nations.*

**Population age 15-29 in**

<b>Philippines</b>	<b>up</b>	<b>21 %</b>
<b>El Salvador</b>	<b>up</b>	<b>21 %</b>

John Pitkin, for Annual Demographic Workshop at USC, 6/01/2009

**Long-term decline in domestic mobility continued in 2008**



Source: U.S. Census Bureau, Current Population Survey.  
Internet Release Date: April 2009

John Pitkin, for Annual Demographic Workshop at USC, 6/01/2009



*Conclusion for long-term immigration:  
Decline in immigration more likely than increase  
from levels of recent past*

- 1. World demographic situation stable to less favorable**
- 2. Strong natural increase in California-born population**
- 3. U.S. economy weakening relative to rest of world**
- 4. Expectations of potential immigrants may already be lowered by downturn**
- 5. Large number of potential return migrants**

John Pitkin, for Annual Demographic Workshop at USC, 6/01/2009