

Southern California School Enrollment Trends and Forecasts

Afternoon Roundtable Presentation
USC/SCAG 21st Annual Demographic Workshop
“Getting Ready for 2010”

Valerie Edwards, Chief Enrollment Analysis Coordinator

Mary Ehrental Prichard, Demographic Research and Planning Analyst

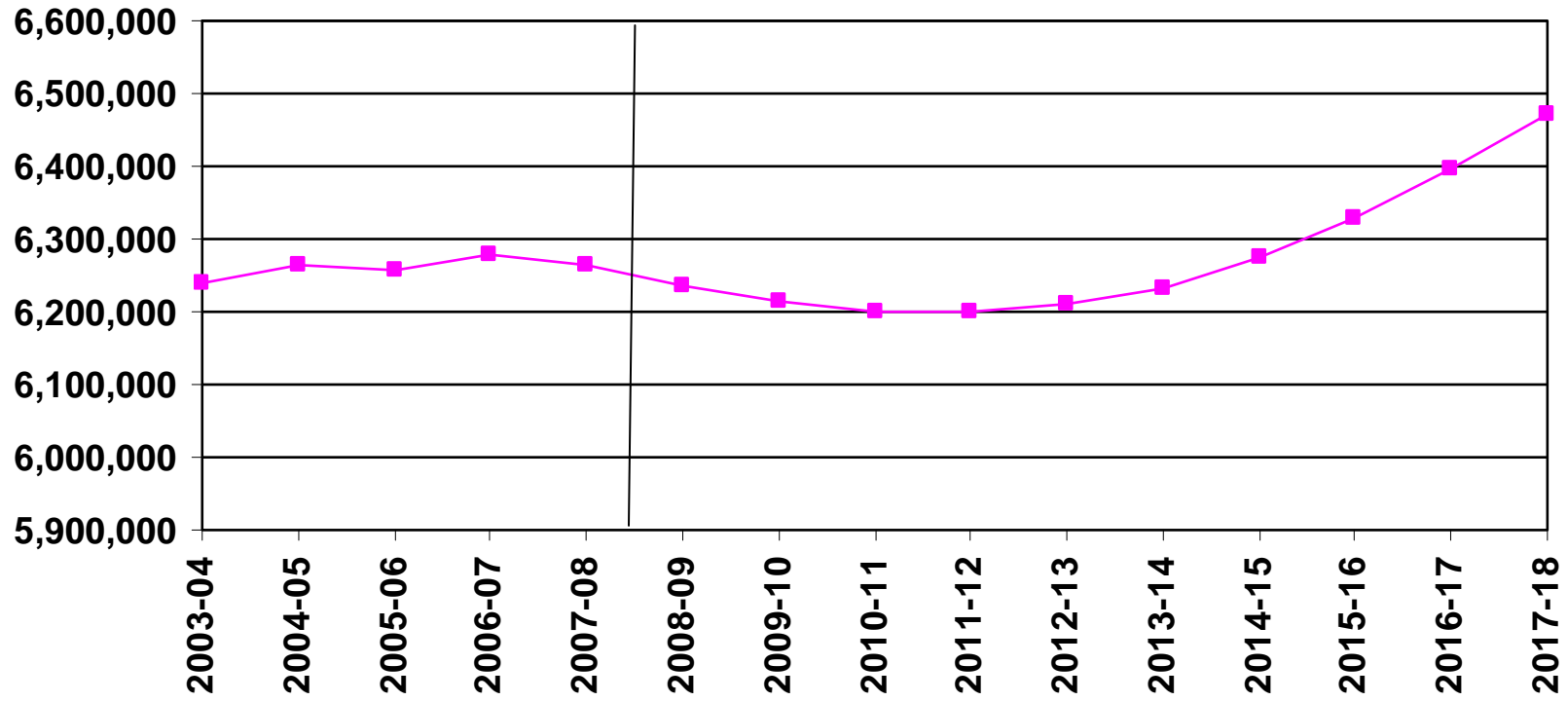
LAUSD Master Planning and Demographics Unit

Rena Perez, Director

June 1, 2009

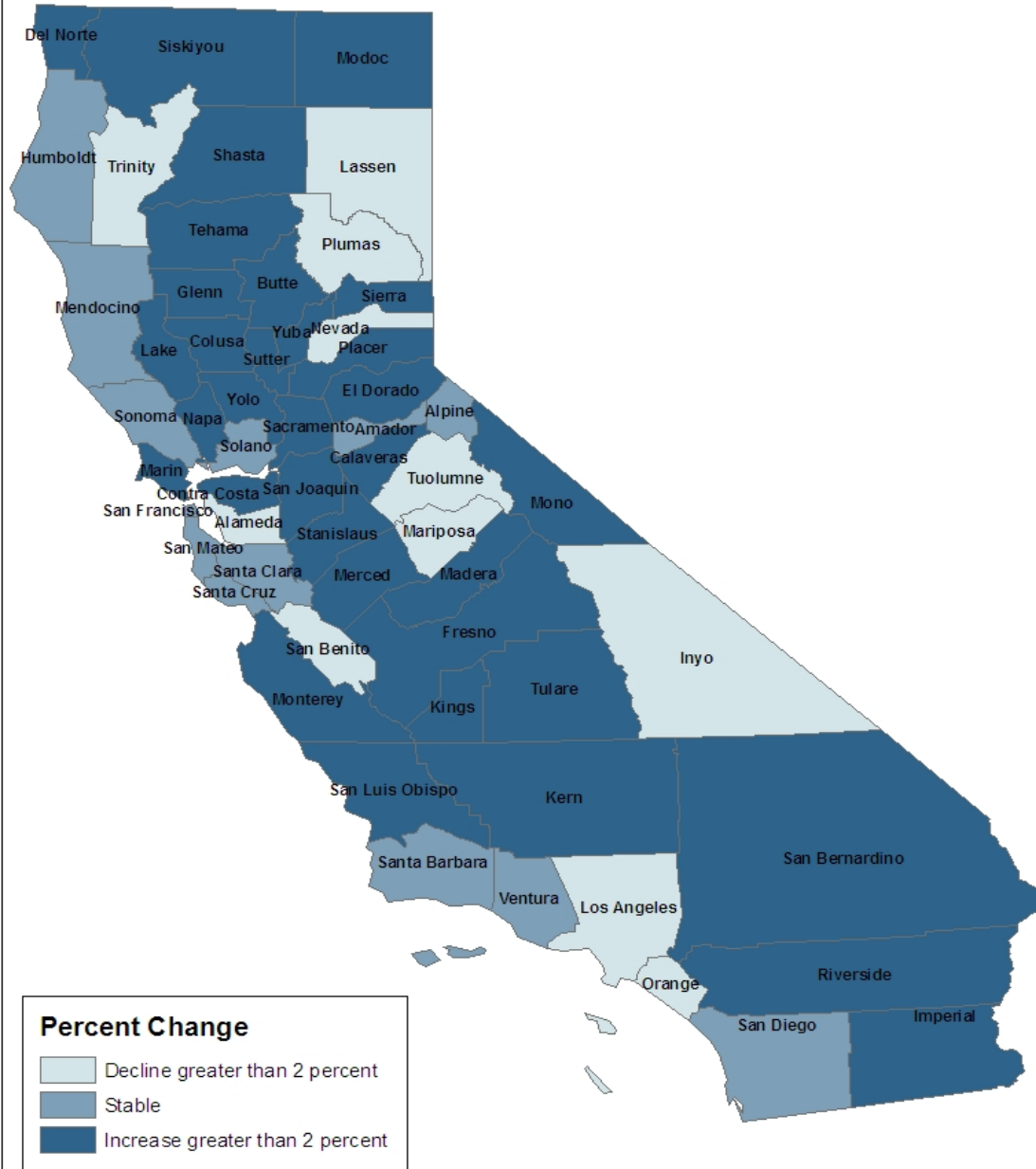


California Public K-12 Graded Enrollment



State of California, Department of Finance, California Public K-12 Graded Enrollment and High School Graduate Projections by County, 2008 Series. Sacramento, California, October 2008.

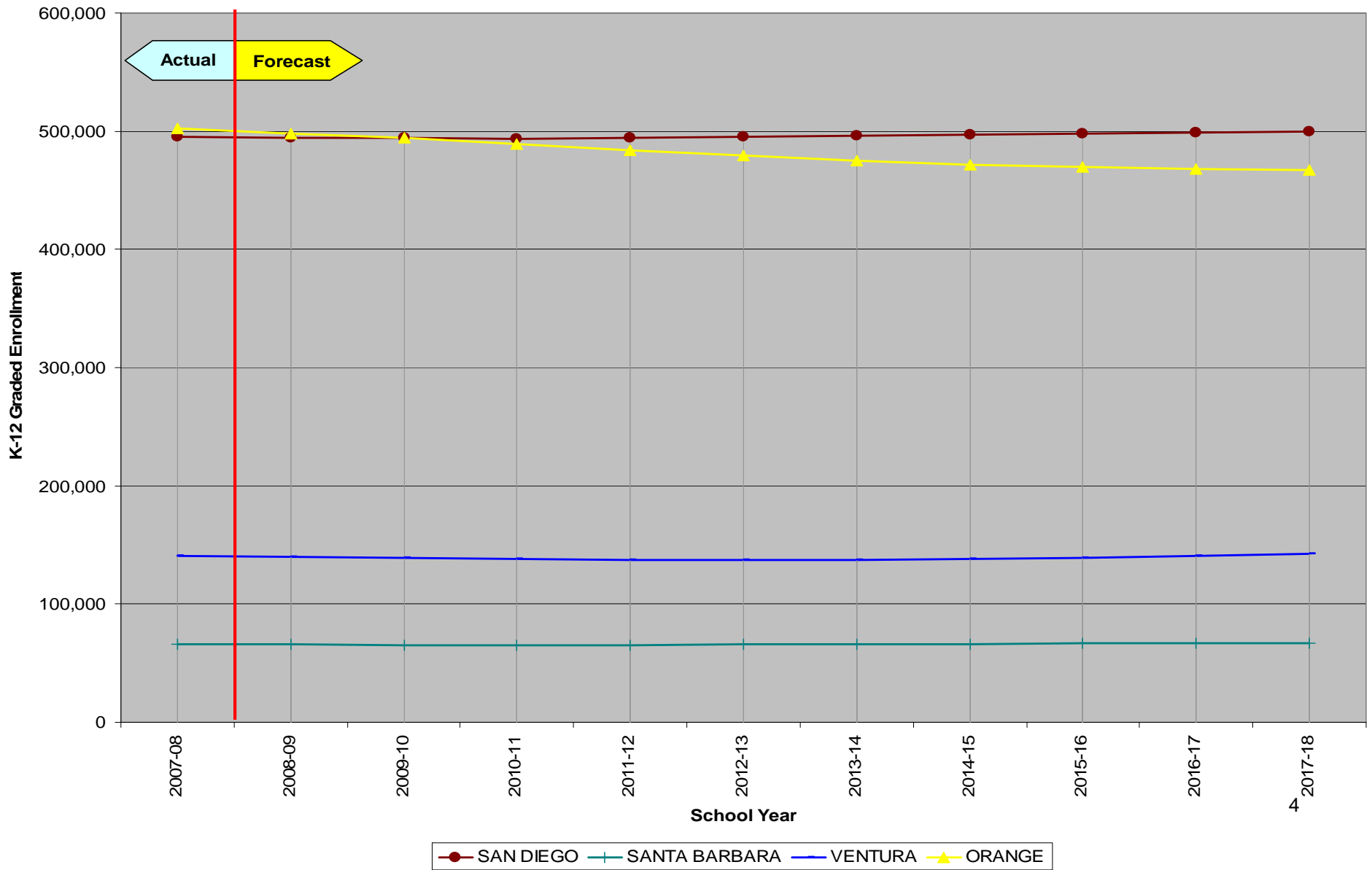
California Public K-12 Graded Enrollment Change, 2007-17



State of California,
 Department of
 Finance, California
 Public K-12 Graded
 Enrollment and
 High School
 Graduate
 Projections by
 County, 2008
 Series. Sacramento,
 California, October
 2008.

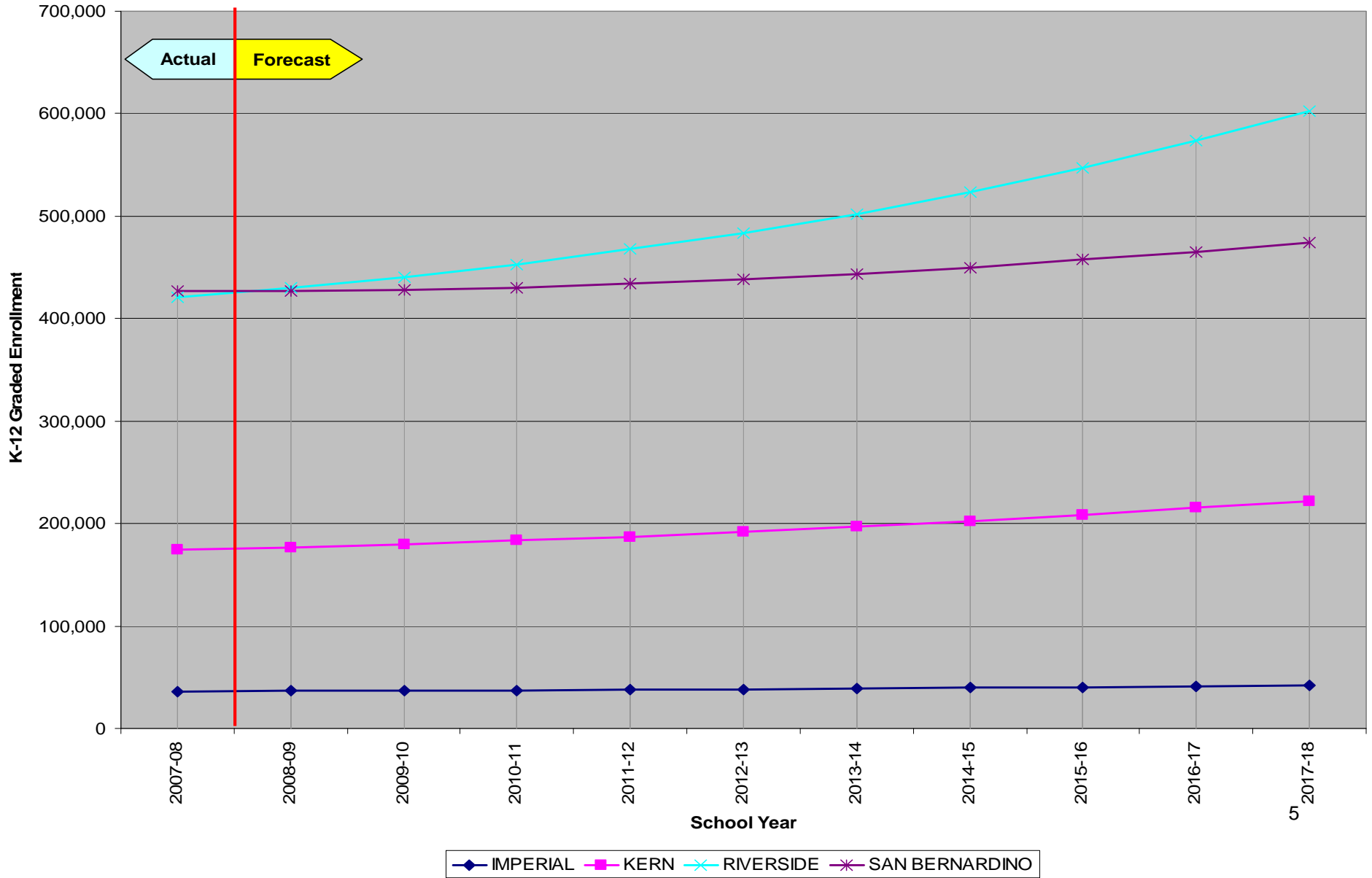
Projected Southern CA Public K-12 Graded Enrollment COASTAL COUNTIES (without LA)

(California Department of Finance Demographic Research Unit)

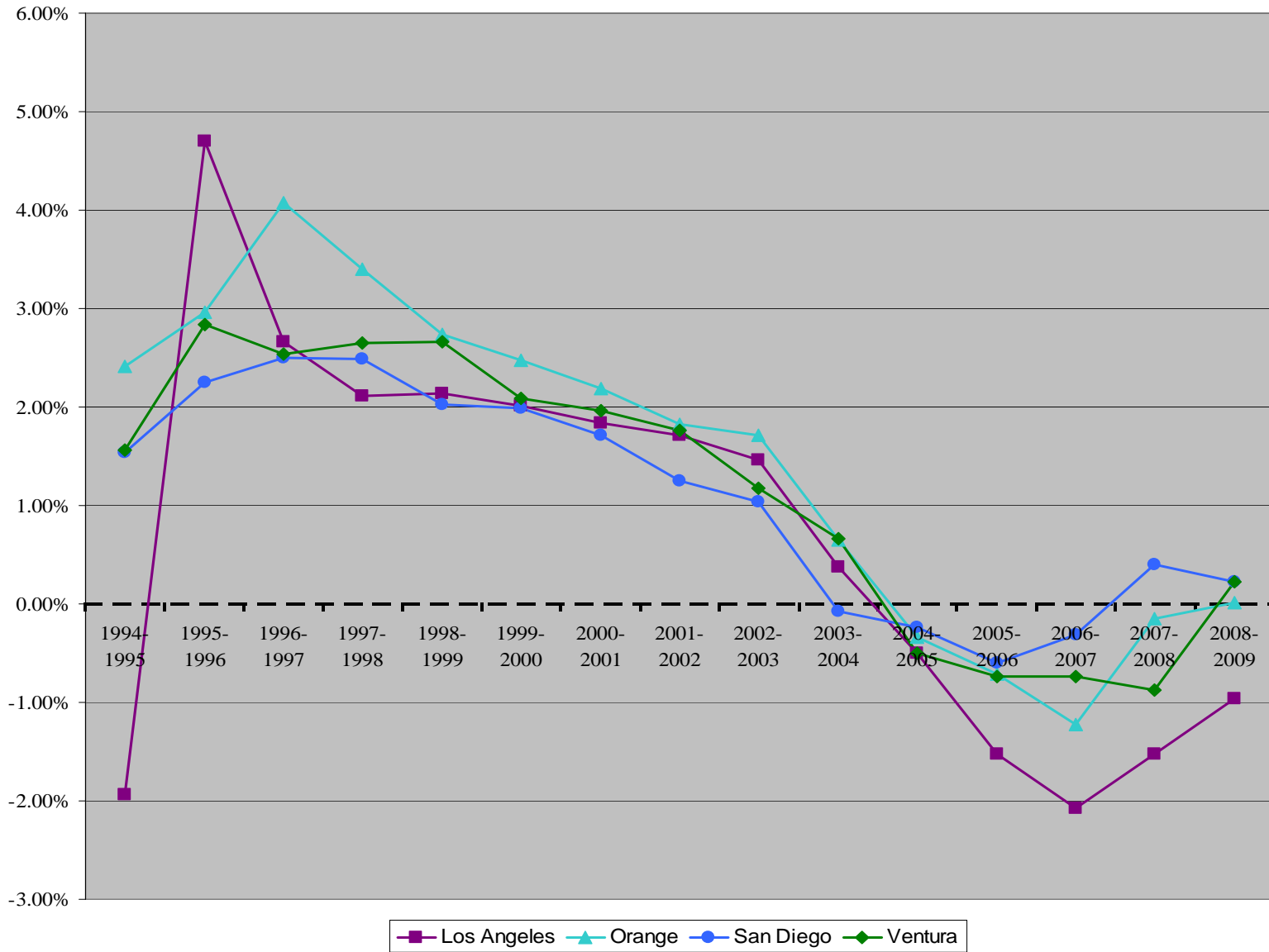


Projected Southern CA Public K-12 Graded Enrollment INLAND COUNTIES

(California Department of Finance Demographic Research Unit)

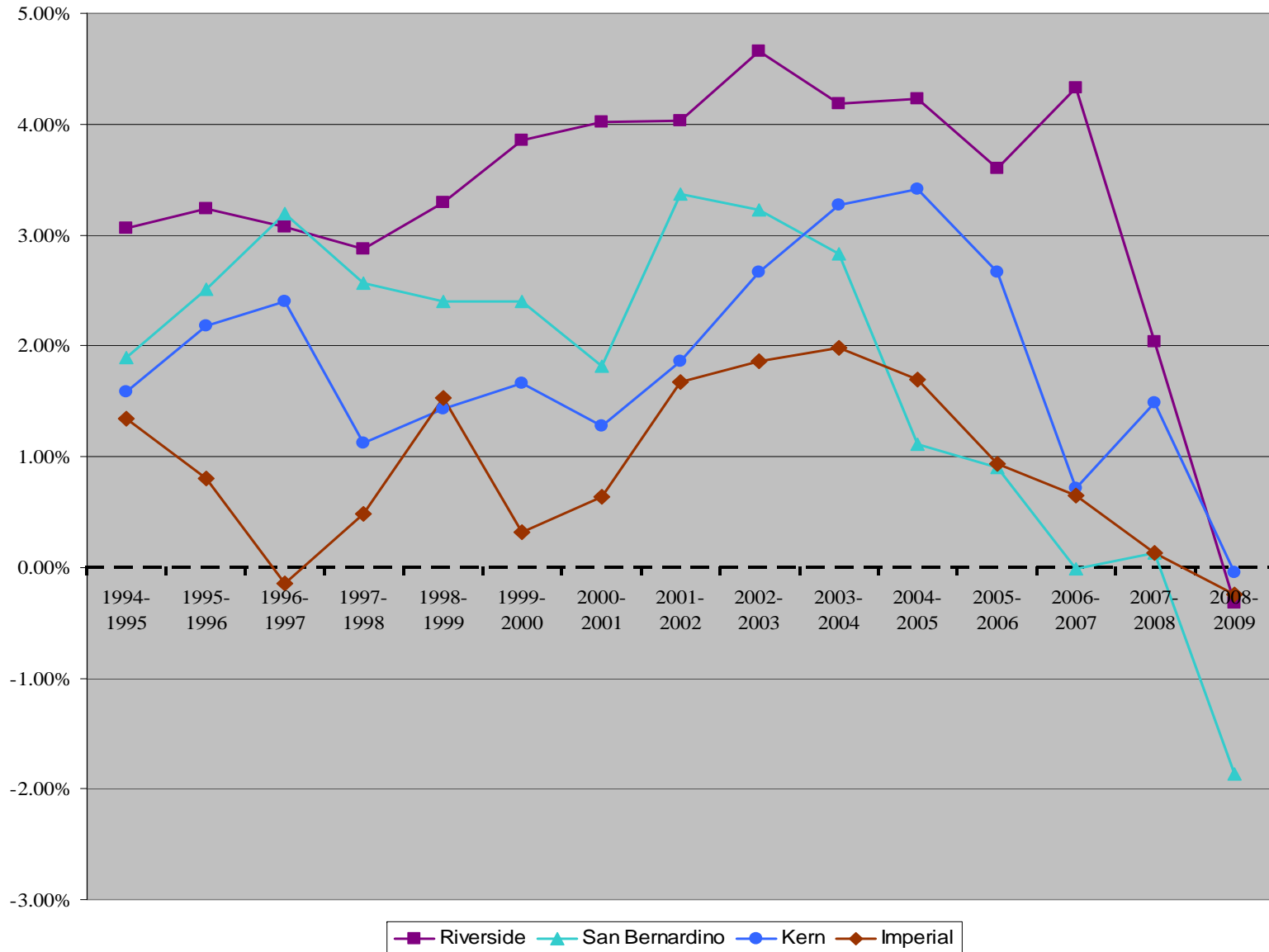


Coastal Counties % Annual Change in Public K-12 Enrollments



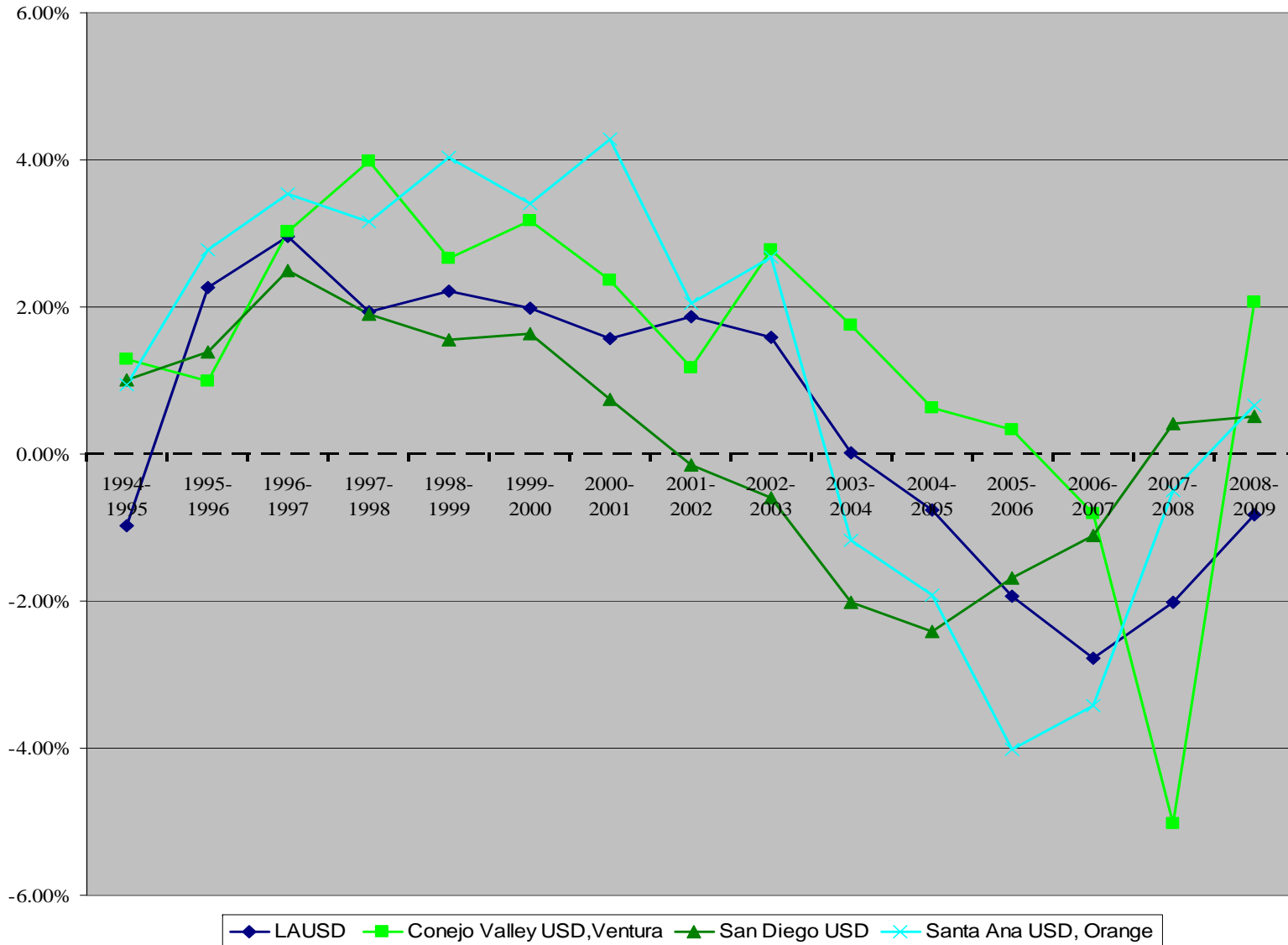
Inland Counties

% Annual Change in Public K-12 Enrollments

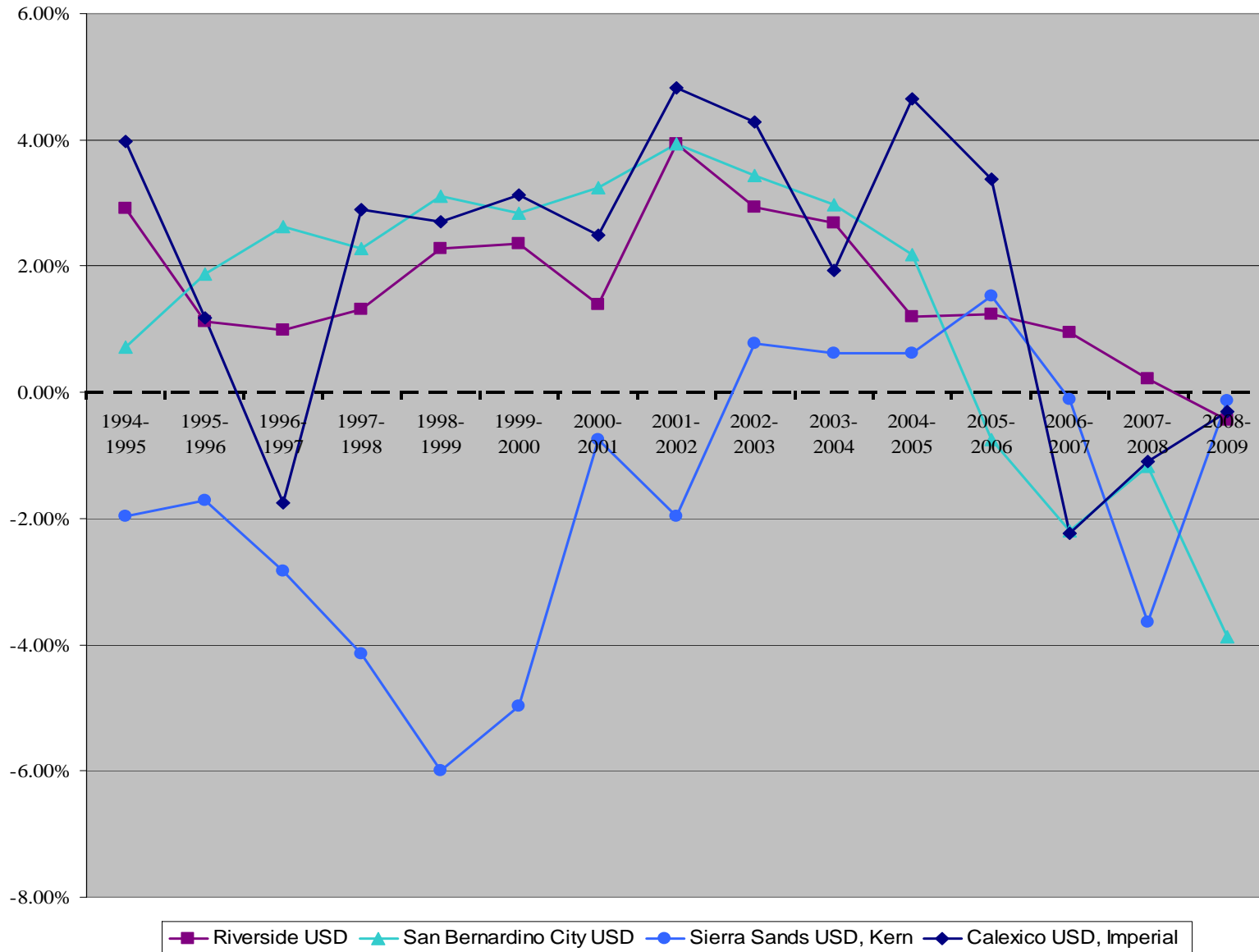


Coastal School Districts

% Annual Change in Public K-12 Enrollments

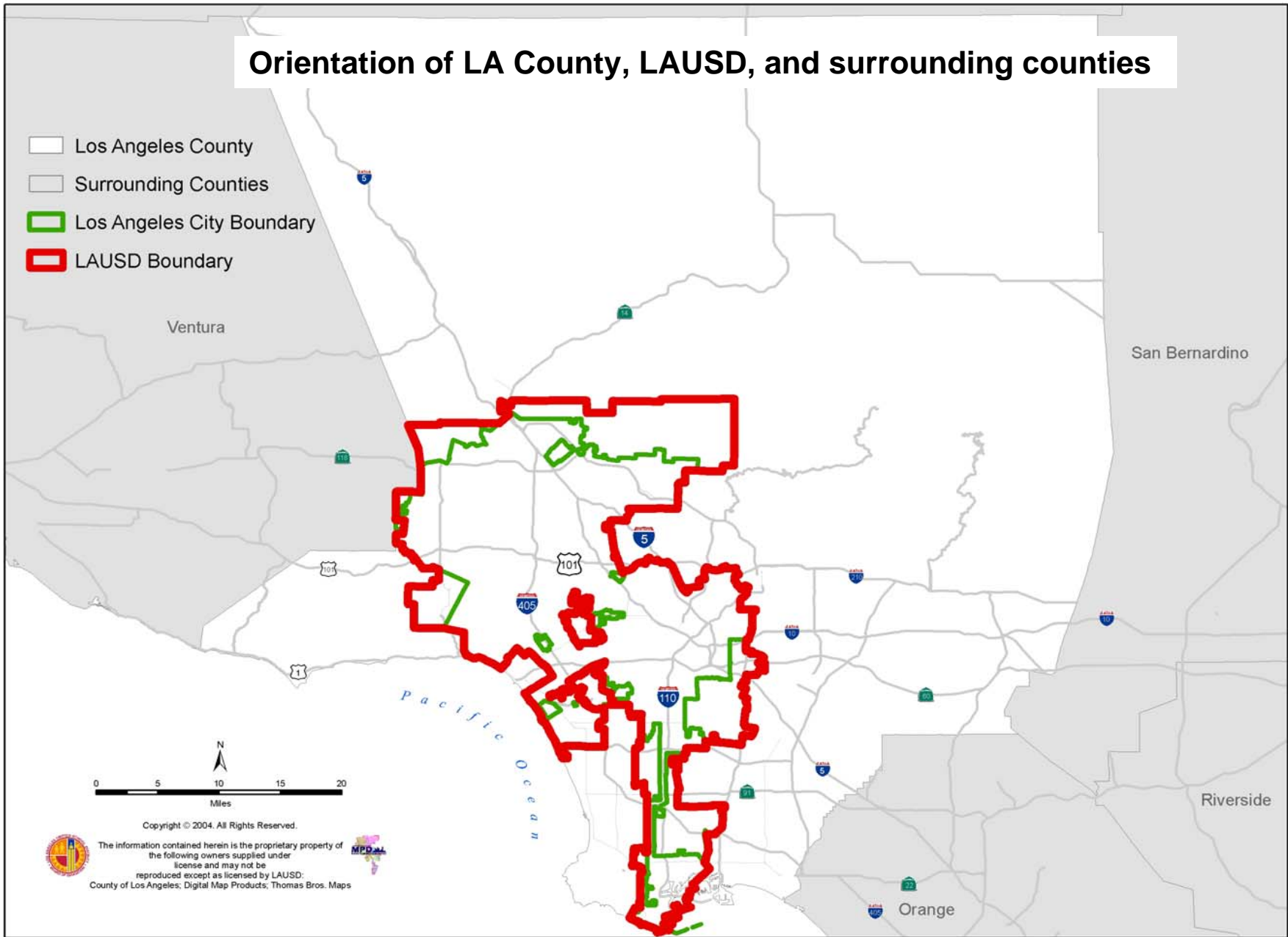


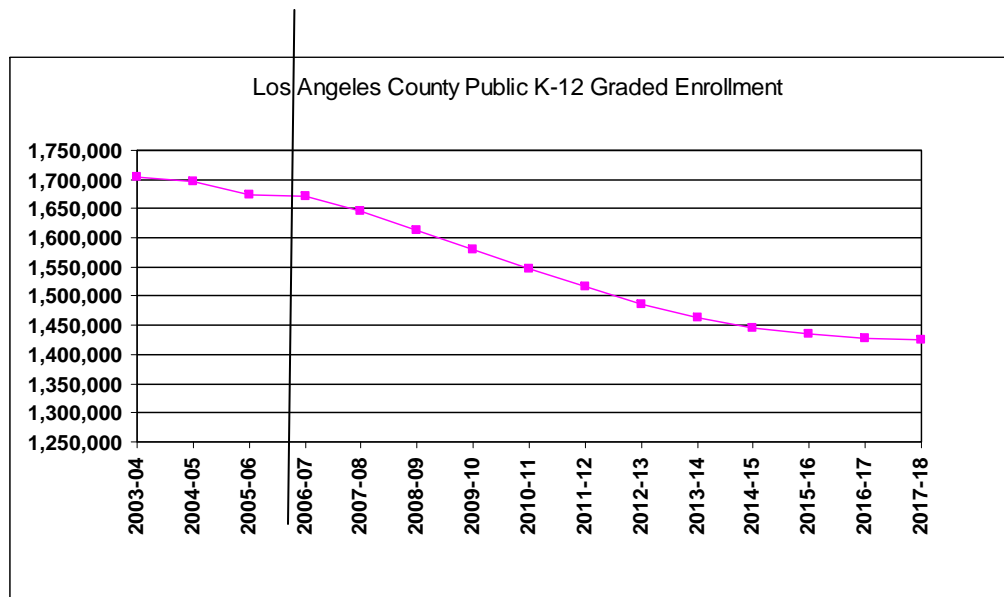
Inland School Districts % Annual Change in Public K-12 Enrollments



Orientation of LA County, LAUSD, and surrounding counties

- Los Angeles County
- Surrounding Counties
- Los Angeles City Boundary
- LAUSD Boundary

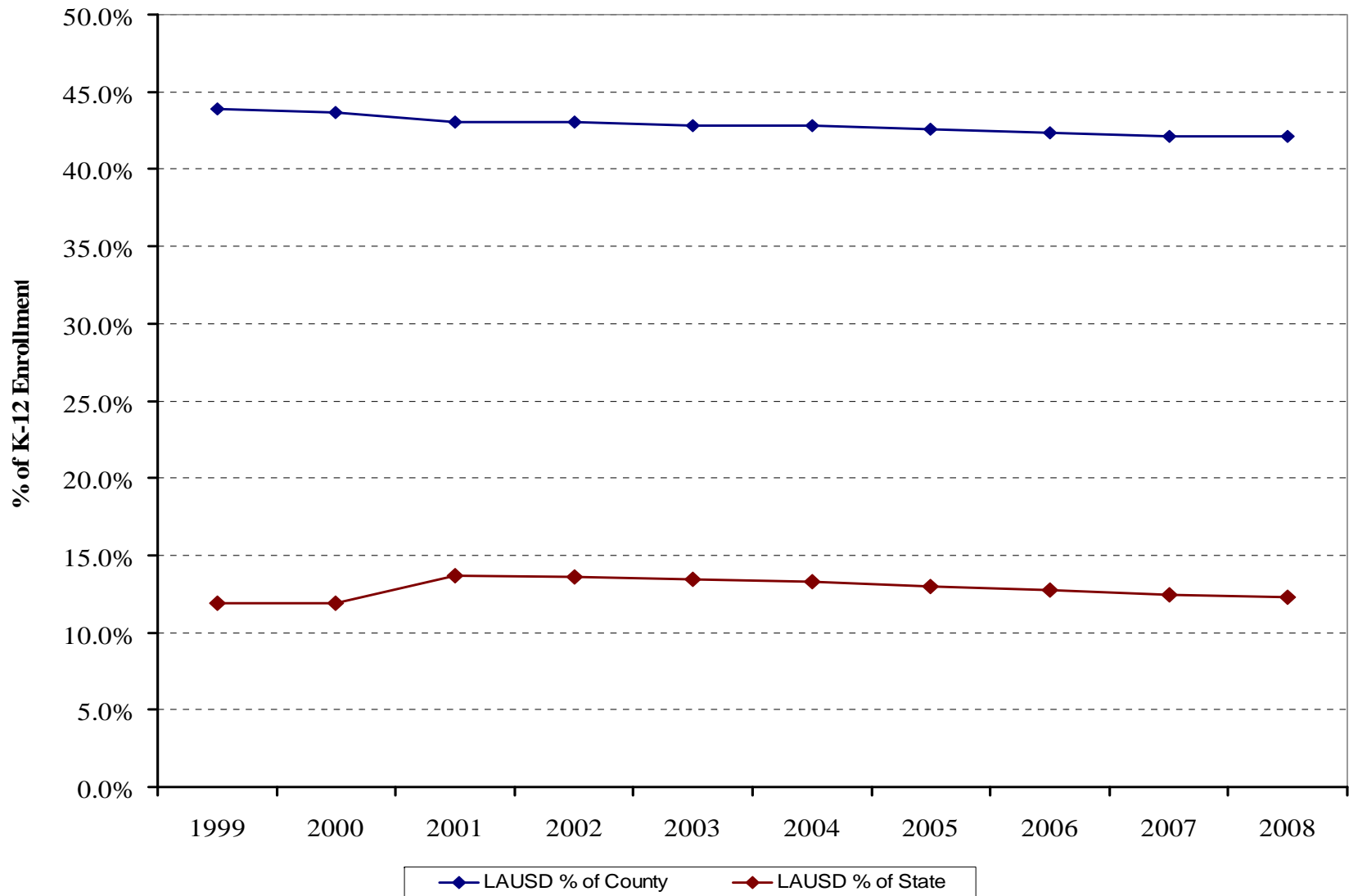




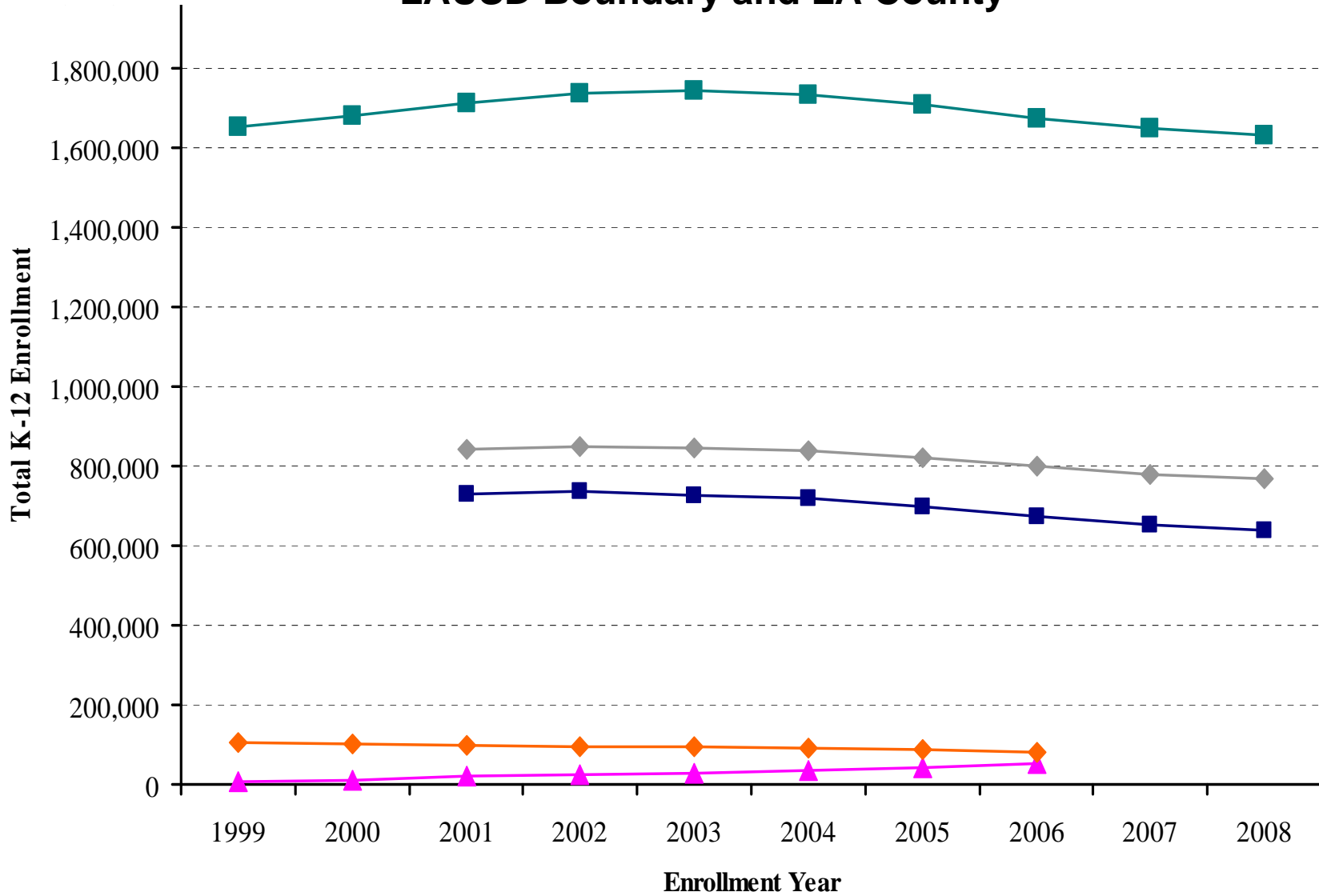
State of California, Department of Finance, California Public K-12 Graded Enrollment and High School Graduate Projections by County, 2008 Series. Sacramento, California, October 2008.

LAUSD K-12 Enrollments as a share of all K-12 Public School Enrollments

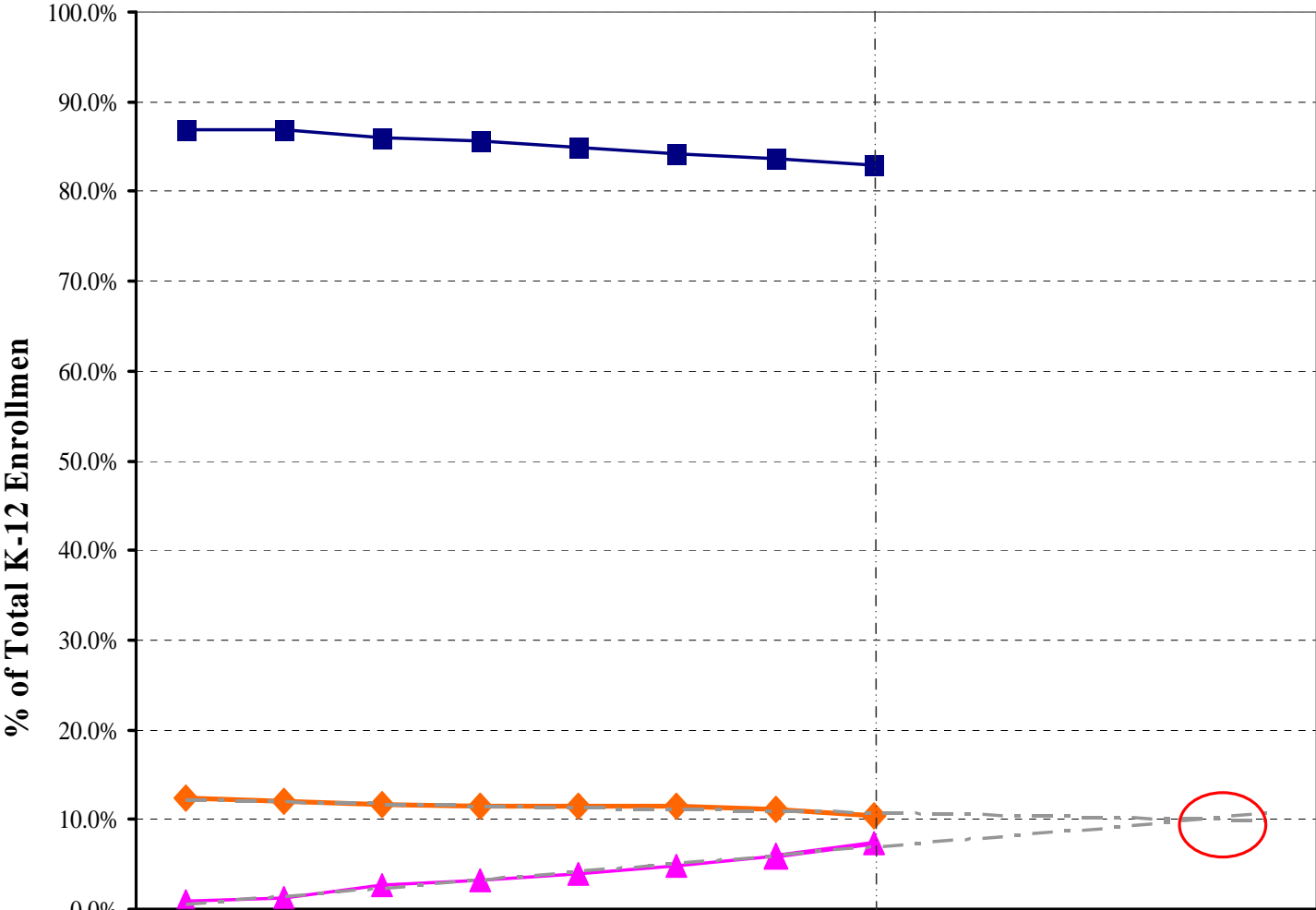
Includes independent charter enrollments



K-12 Enrollments by Type: LAUSD Boundary and LA County

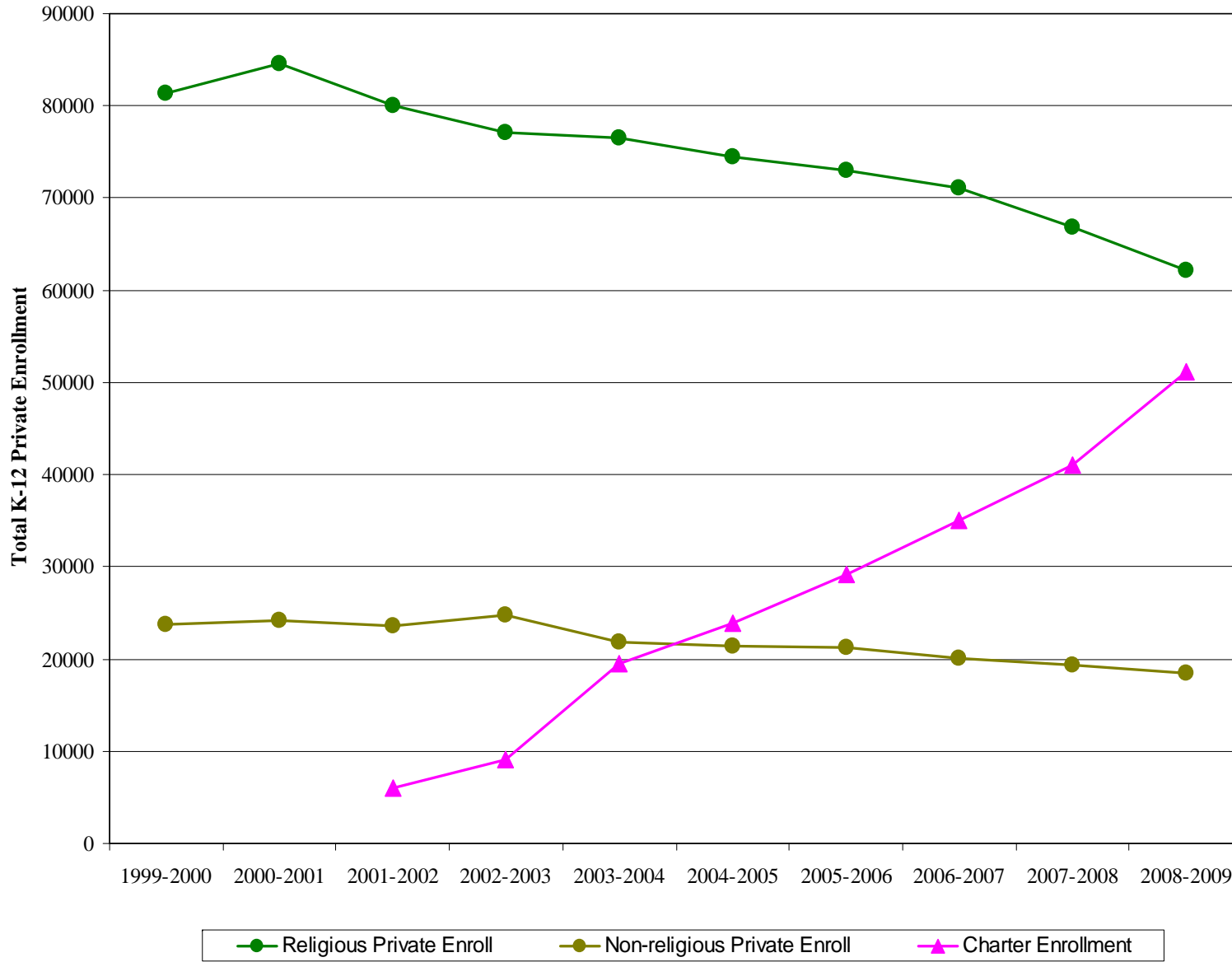


Enrollment within LAUSD Boundary as a Percent of Total K-12 Enrollment

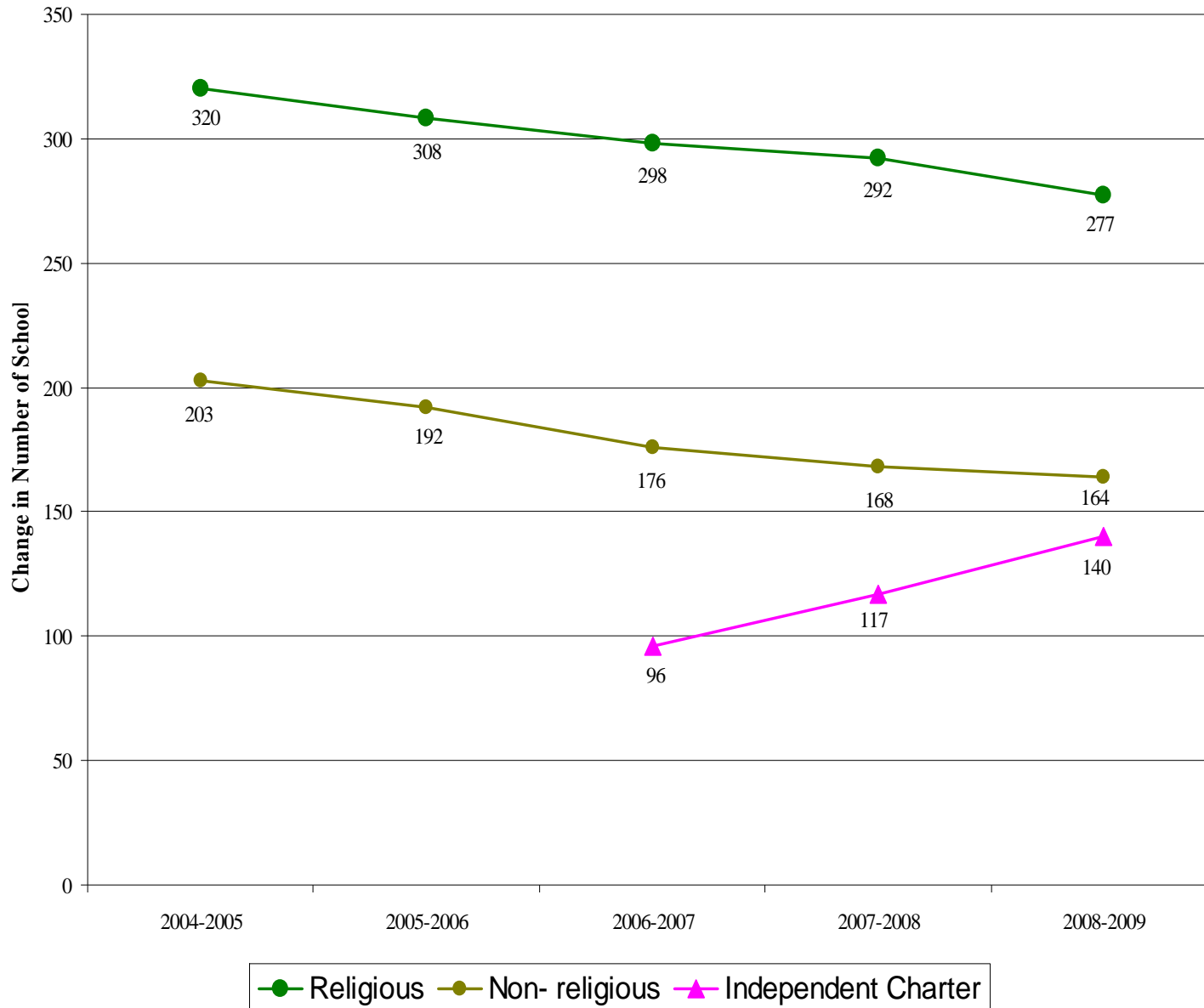


	01-02	02-03	03-04	04-05	05-06	06-07	07-08	08-09	09-10	10-11	11-12	12-13
LAUSD w/o Independent Charter	86.9%	86.9%	86.0%	85.7%	85.0%	84.2%	83.7%	82.9%				
Private	12.3%	12.0%	11.6%	11.4%	11.5%	11.4%	11.1%	10.5%				
Independent Charter	0.82%	1.22%	2.61%	3.21%	4.01%	4.93%	5.92%	7.42%				

Non-LAUSD School Enrollments 1999-2008 w/in LAUSD Boundary

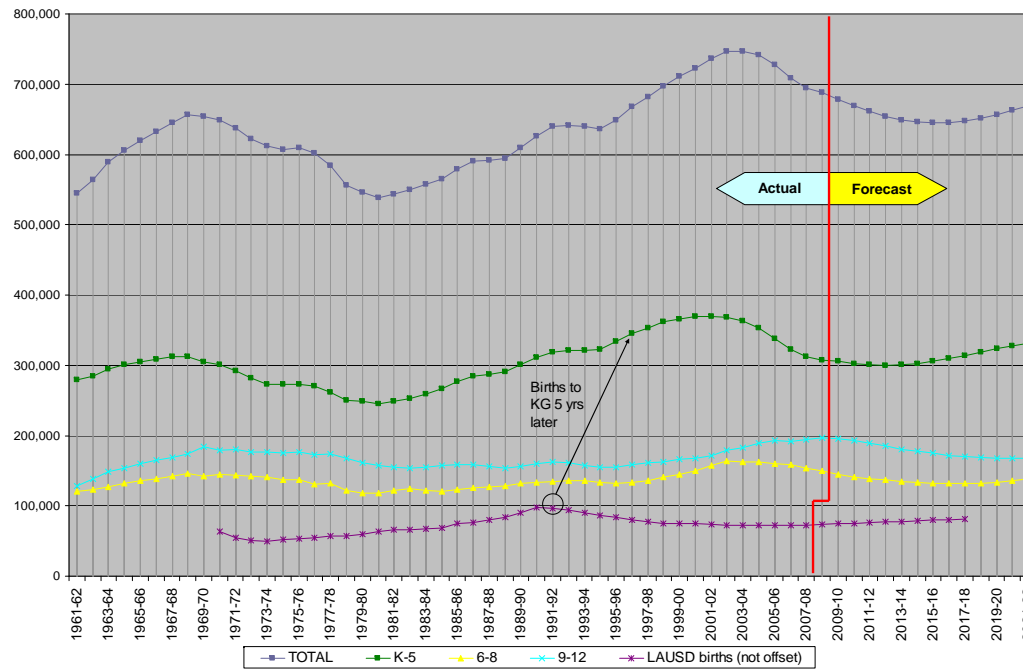


Change in the Number of Private & Charter Schools by Type w/in LAUSD Boundary

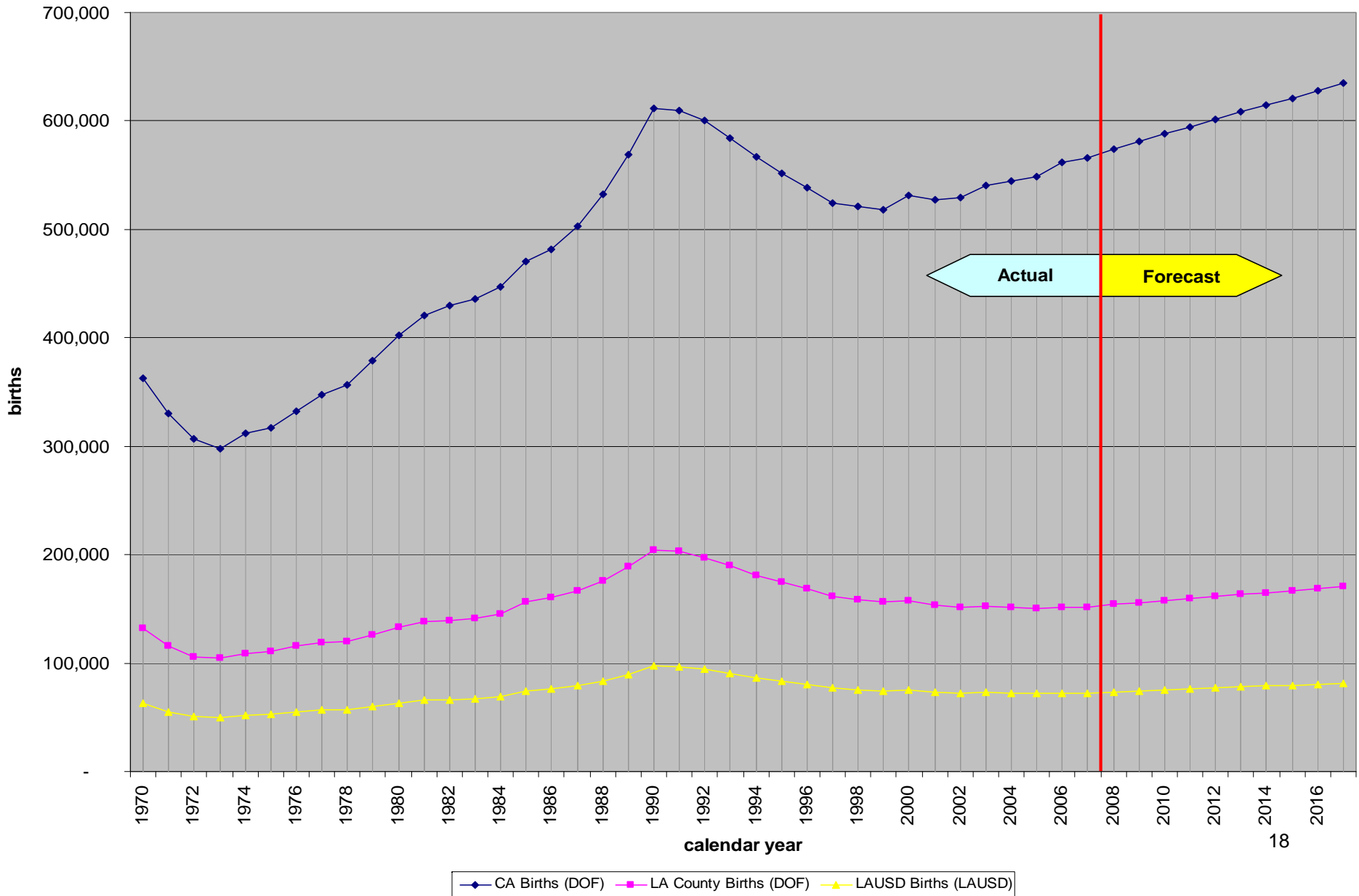


LAUSD K-12 Public Enrollment and Births, Historical and Forecast

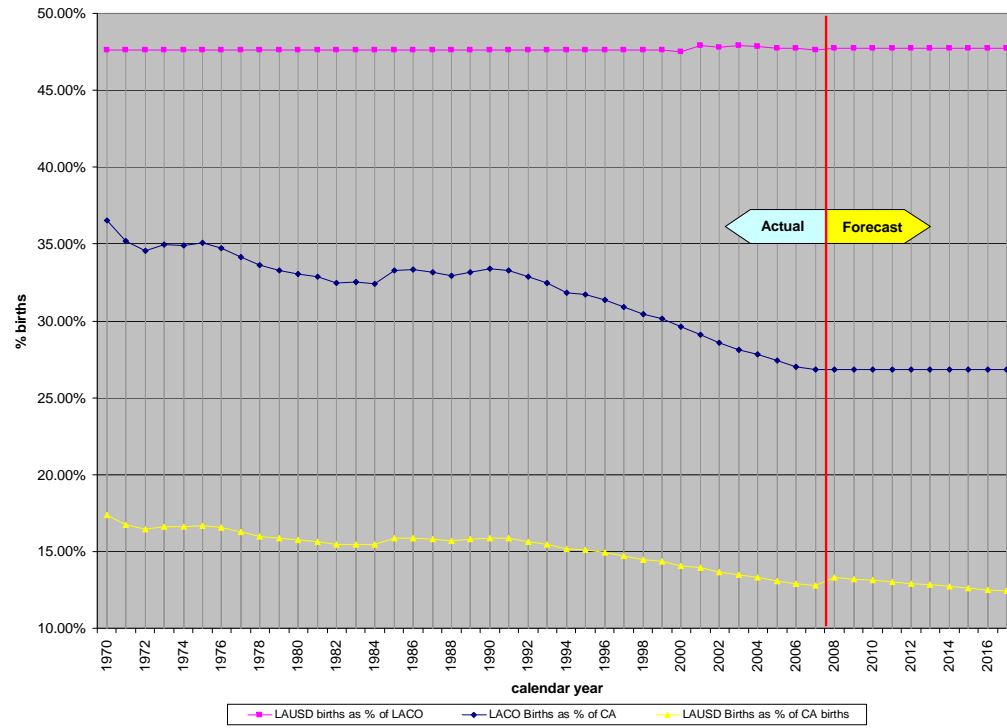
(public enrollment includes affiliated and independent charters; opportunity schools; stand-alone magnets)



CA, LA County and LAUSD Historical and Forecast Births



LA County and LAUSD Births as Share of CA Births



The Los Angeles Unified School District:

- Enrolled 688,138 students in grades K-12 in SY08-09
- Is second only to New York City Public Schools in size (within the U.S.A.)
- Covers 710 square miles
- Serves all or part of 28 cities and multiple unincorporated areas
- Serves over 40% of LA County's general & school-aged populations
- Had a \$13.17 billion total School District Budget in SY05-06
- Had a \$19.2 billion new school construction and repair program, the largest in U.S. history, scheduled to be completed in 2012
- In SY08-09, was composed of:
 - 885 K-12 Schools and Centers
 - 194 Adult, Special and Occupational Schools and Centers
 - 79 Independent K-12 Charters and Centers
 - 36,767 Regular Teachers
 - 40,514 Administrators, Support and Classified Staff



Data Sources

- Los Angeles Unified School District, Student Information Systems, Enrolled Student Norm Day Data, SY1989 – SY2008
- Los Angeles Unified School District, Master Planning and Demographics, Historical District-Wide Enrollment, SY1961 – SY1988
- California Department of Education, Educational Demographics Office, *California Public Schools- County Enrollment by Grade* [Computer File], data downloaded May 25, 2009, <http://dq.cde.ca.gov/dataquest/dataquest.asp>
- California Department of Education, Educational Demographics Office, *California Public Schools- District Enrollment by Grade* [Computer File], data downloaded May 25, 2009 , <http://dq.cde.ca.gov/dataquest/dataquest.asp>
- California Department of Education, Educational Demographics Office, *California Private School Directory by Year* [Computer File], data downloaded May 25, 2009, <http://dq.cde.ca.gov/dataquest/dataquest.asp>
- California Department of Education, Educational Demographics Office, *California Public Schools- State Enrollment by Grade* [Computer File], data downloaded May 25, 2009, <http://dq.cde.ca.gov/dataquest/dataquest.asp>
- Los Angeles County Department of Public Health, Office of Health and Assessment and Epidemiology, Data Collection & Analysis Unit. *Birth Records*.

For further information: Master Planning and Demographics, valerie.edwards@lausd.net, 213-893-6850



**Los Angeles Unified School District
David L. Brewer, Superintendent**

About the Master Planning and Demographics Unit

Rena Perez, Director

The Los Angeles Unified School District is the nation's second largest public school system, serving approximately 688,000 children in grades K-12. The Master Planning and Demographics Unit supports the Los Angeles Unified School District's mission to educate students through its dedication to the research and analysis utilized in the planning for the optimal utilization of existing schools and determining the need for new school facilities. For more information, please visit us on the web at www.lausd.net or www.laschools.org/employee/mpd/.

About the Authors

Valerie Edwards, Chief Enrollment Analysis Coordinator

Ms. Edwards leads and oversees all demographic research and data analysis for LAUSD's Master Planning and Demographics Unit, where she is in charge of strategic planning and coordination of demographic analysis and enrollment projections in support of LAUSD's \$14 billion facilities Strategic Execution Plan. She is currently directing the automation of enrollment projection procedures for the modeling of geographic attendance boundary distribution and simulation of school choice. Ms. Edwards has been a frequent participant at Population Association of America's (PAA) Annual Meetings, serving as session organizer, presenter, panelist and discussant. She is a member the Southern California Association of Governments' (SCAG) Plans & Programs Technical Advisory Committee. She holds a Master's degree in City Planning from the Massachusetts Institute of Technology.

Mary Ehrental Prichard, Demographic Research and Planning Analyst

Ms. Prichard's work focuses on the production of short and long range enrollment forecasts for the District's 600+ schools and the production of specialized demographic research and analysis, including the analysis of internal LAUSD and general population demographic data. She has worked extensively with spatially referenced U.S. Census data within a GIS environment. Ms. Prichard has served for a number of years in adjunct faculty positions for community colleges in the Los Angeles region as well as at California State University at Los Angeles. She served as President of the Los Angeles Geographical Society from 2002 to 2004. She holds B.A. and M.A. degrees in the field of Geography from California State University at Los Angeles.

