

Migration to Southern California and the Bay Area 1970-2010 and Implications for Projections

John Pitkin

Analysis and Forecasting, Inc., Cambridge, MA

Are there patterns in past regional migration that are useful guides for projections?

- Migration flows have varied widely in recent decades
- When can we do better than simple extrapolation of past trends?

Evidence from detailed analyses of components of population change, 1970-2010

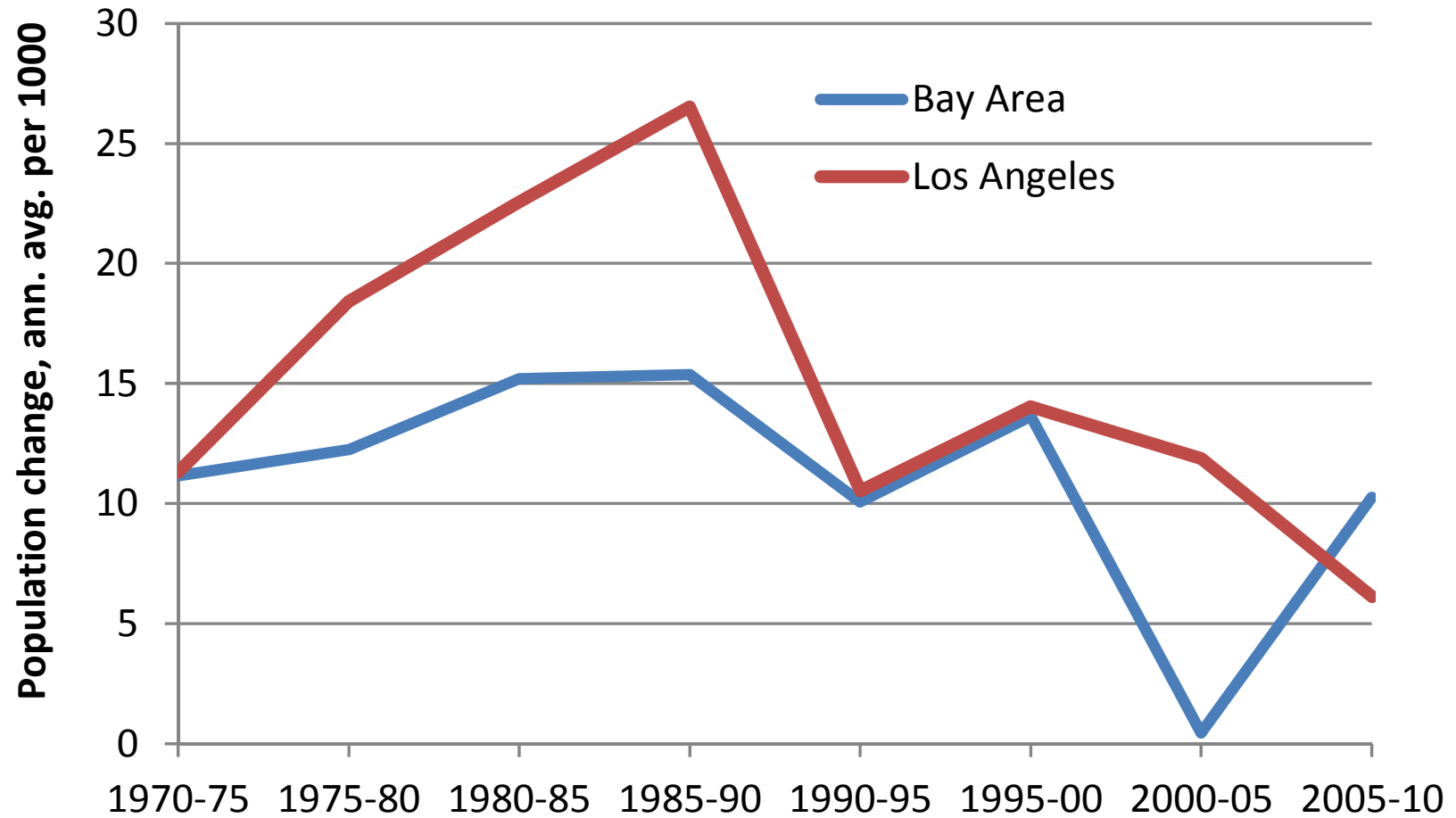
- Two regions:
 - Southern California, 6 counties, population 18.1 M
 - San Francisco Bay Area, 9 counties, population 7.1 M
- Periods:
 - 5-year half decades (1970-1975, 1975-1980...,2005-2010)
- Sources:
 - Decennial Census and American Community Survey

Most of the observed variability in population growth has been in the migration component

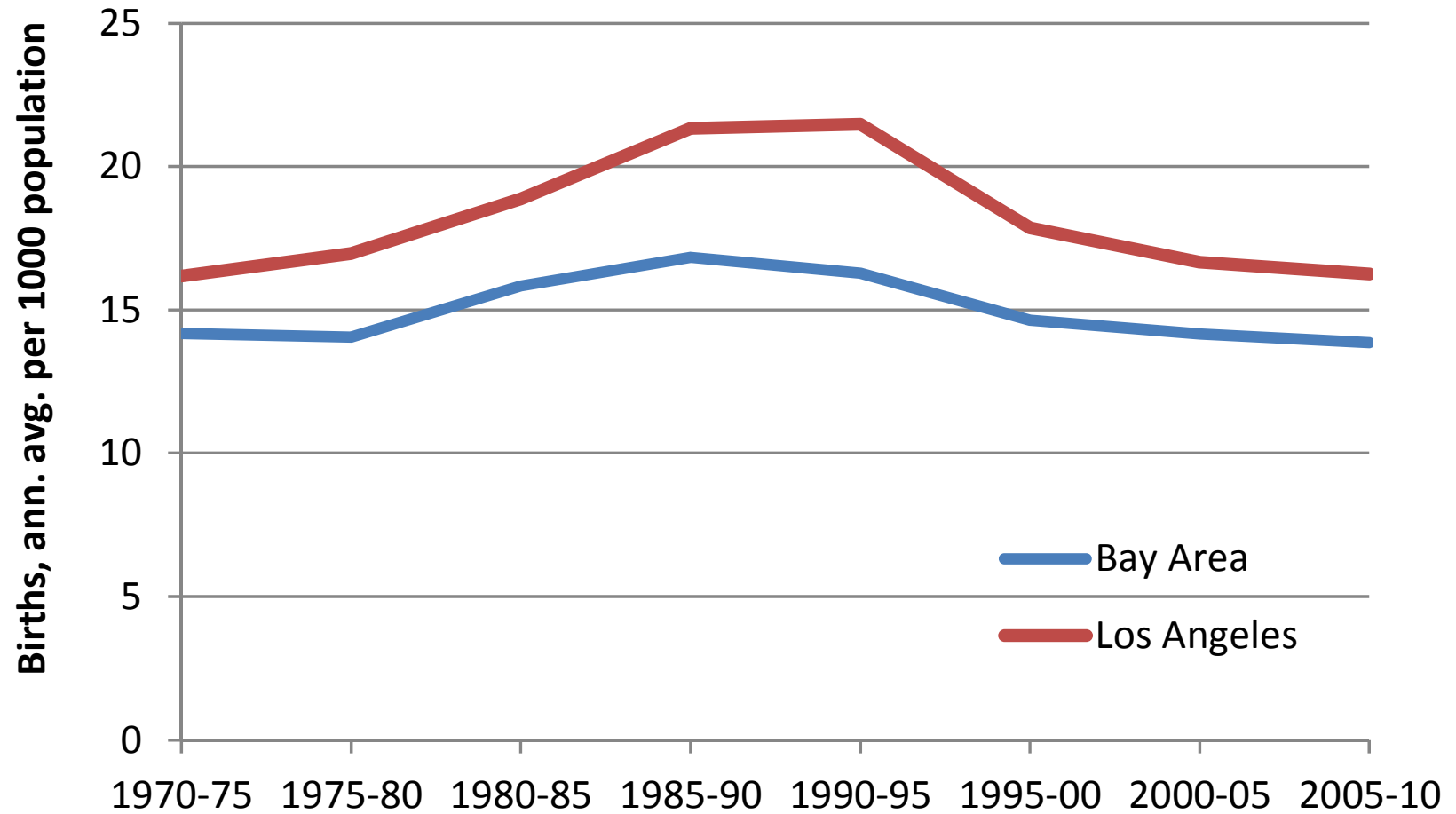
Components are:

- Births
- Deaths
- Net domestic migration
- Net immigration

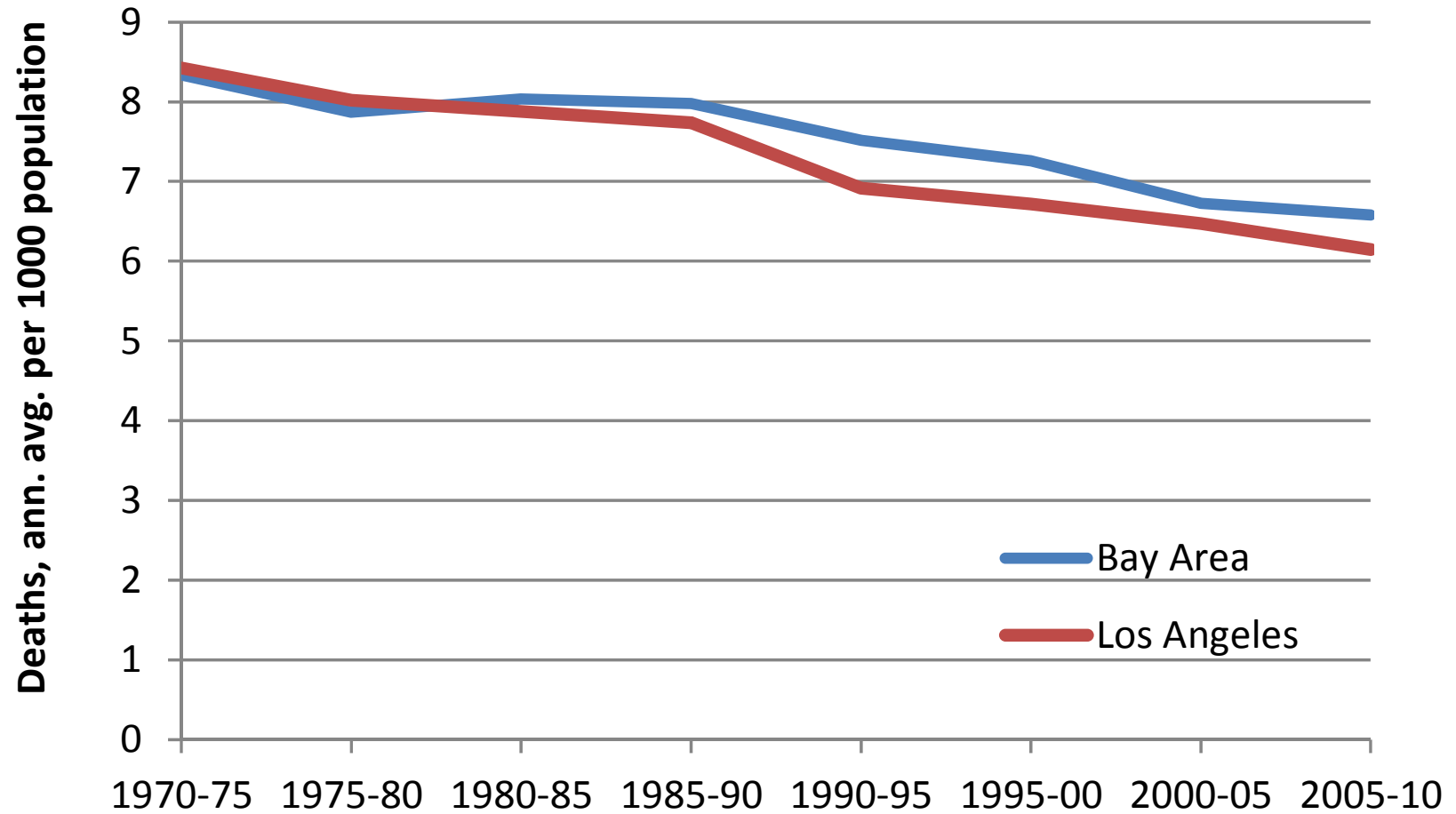
Rate of Population Change, 1970-2010



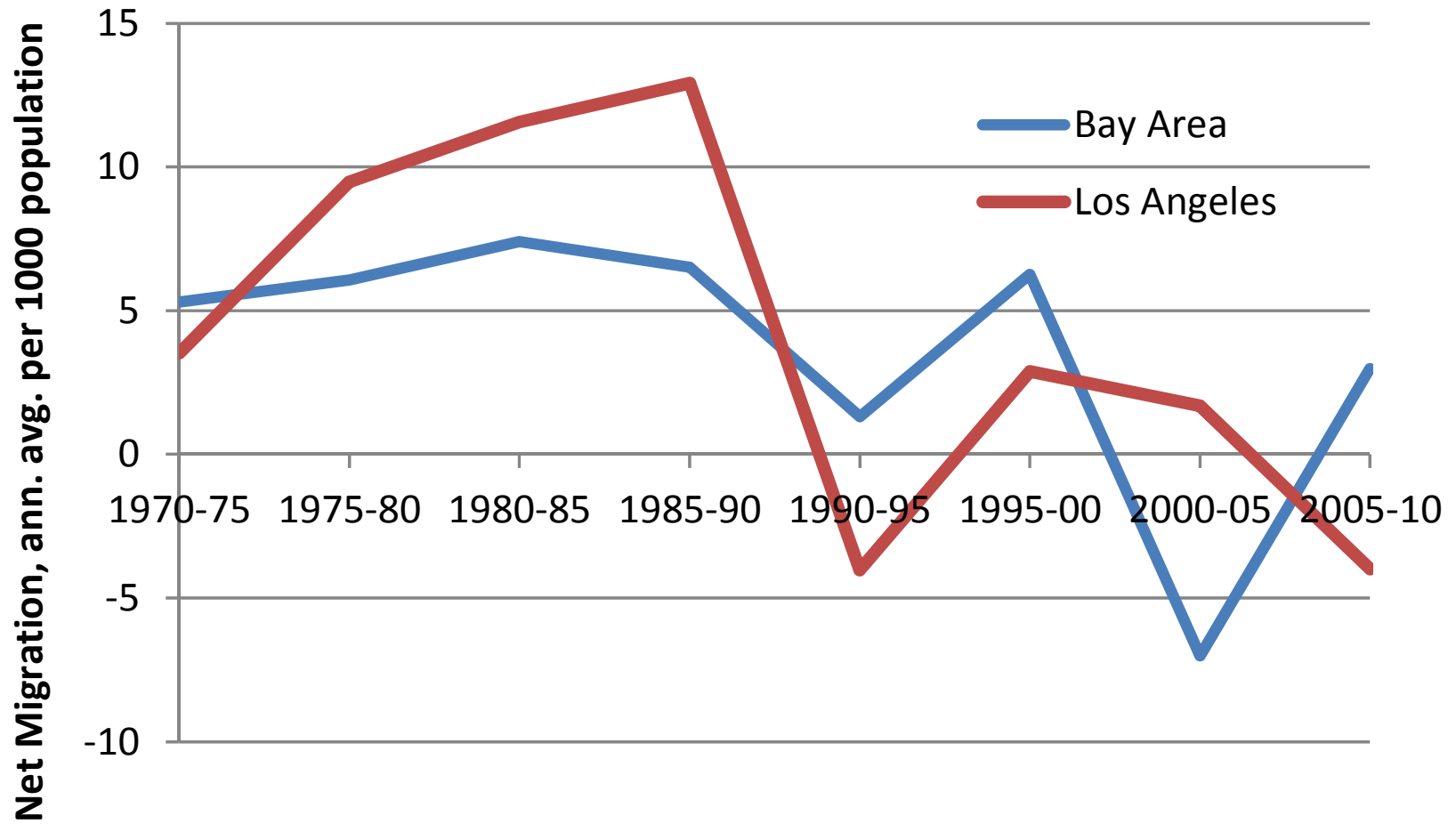
Births, 1970-2010



Deaths, 1970-2010



Net Migration, 1970-2010

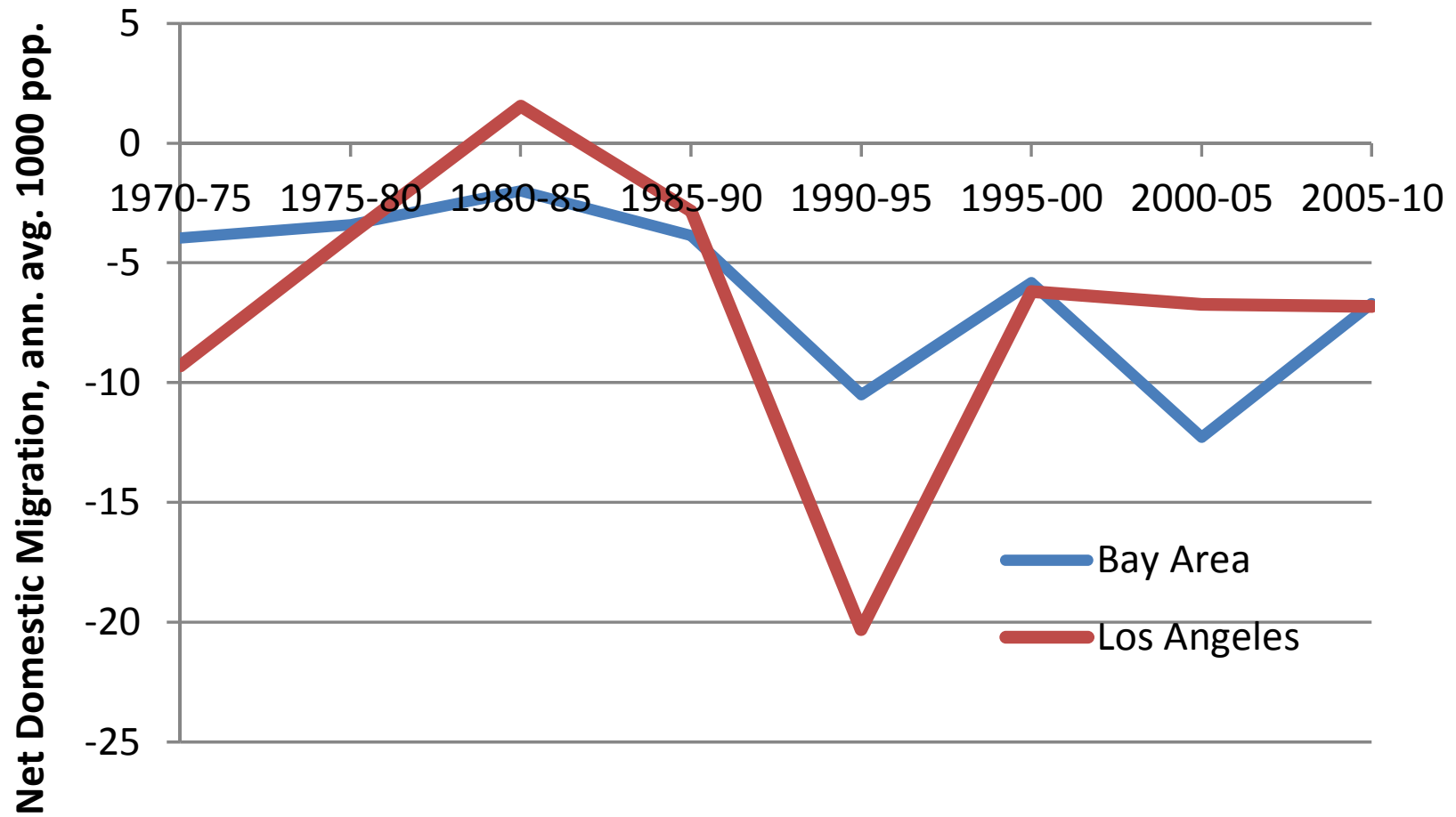


In both metropolitan regions, most of the observed variability in population growth has been in migration

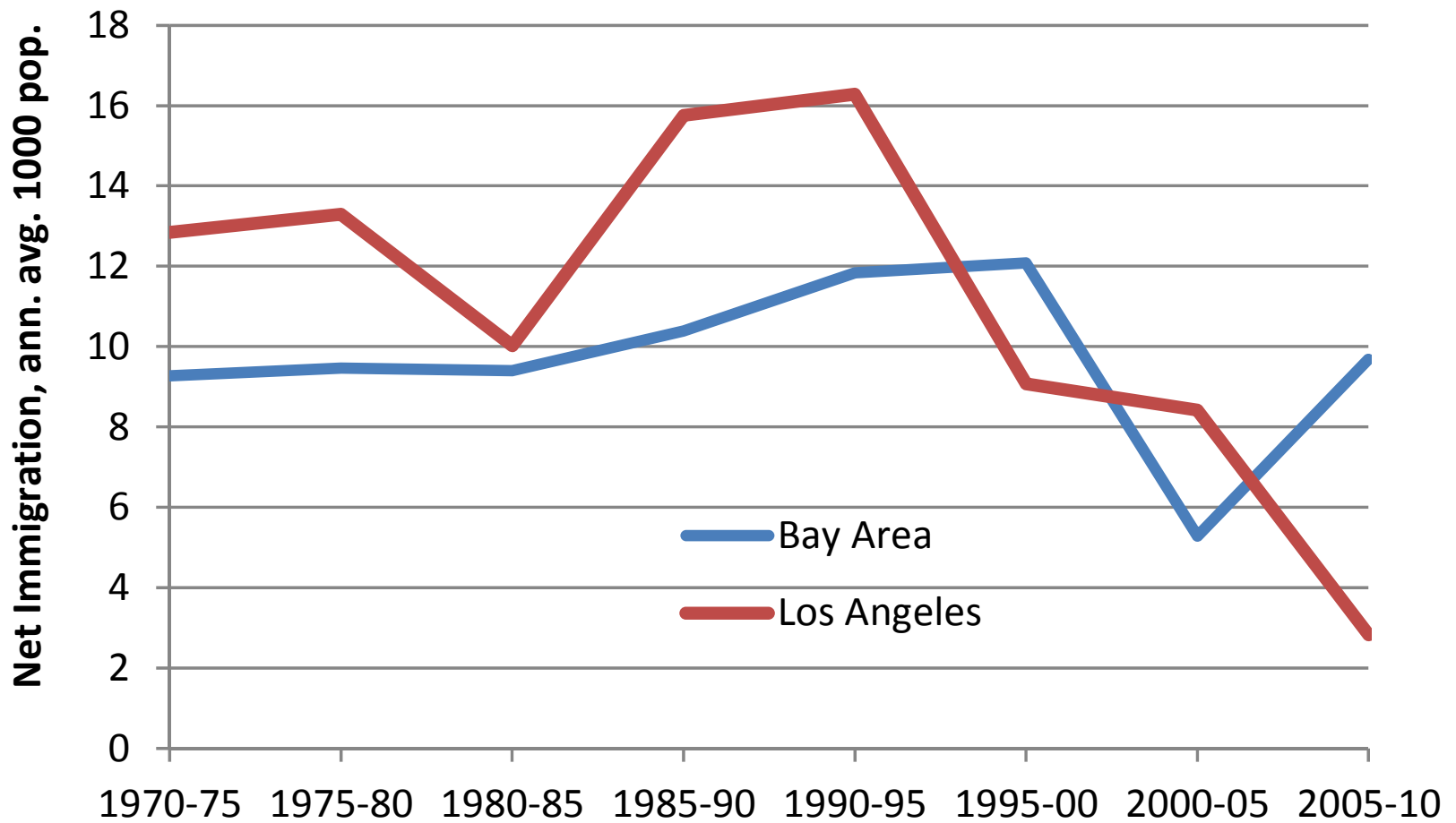
- Variability = uncertainty for forecasting
- This means that extrapolation of recent rates is apt to produce large errors in projections
- There are both similarities and differences between the variations in the two regions

Have domestic migration and immigration varied in parallel or followed different paths?

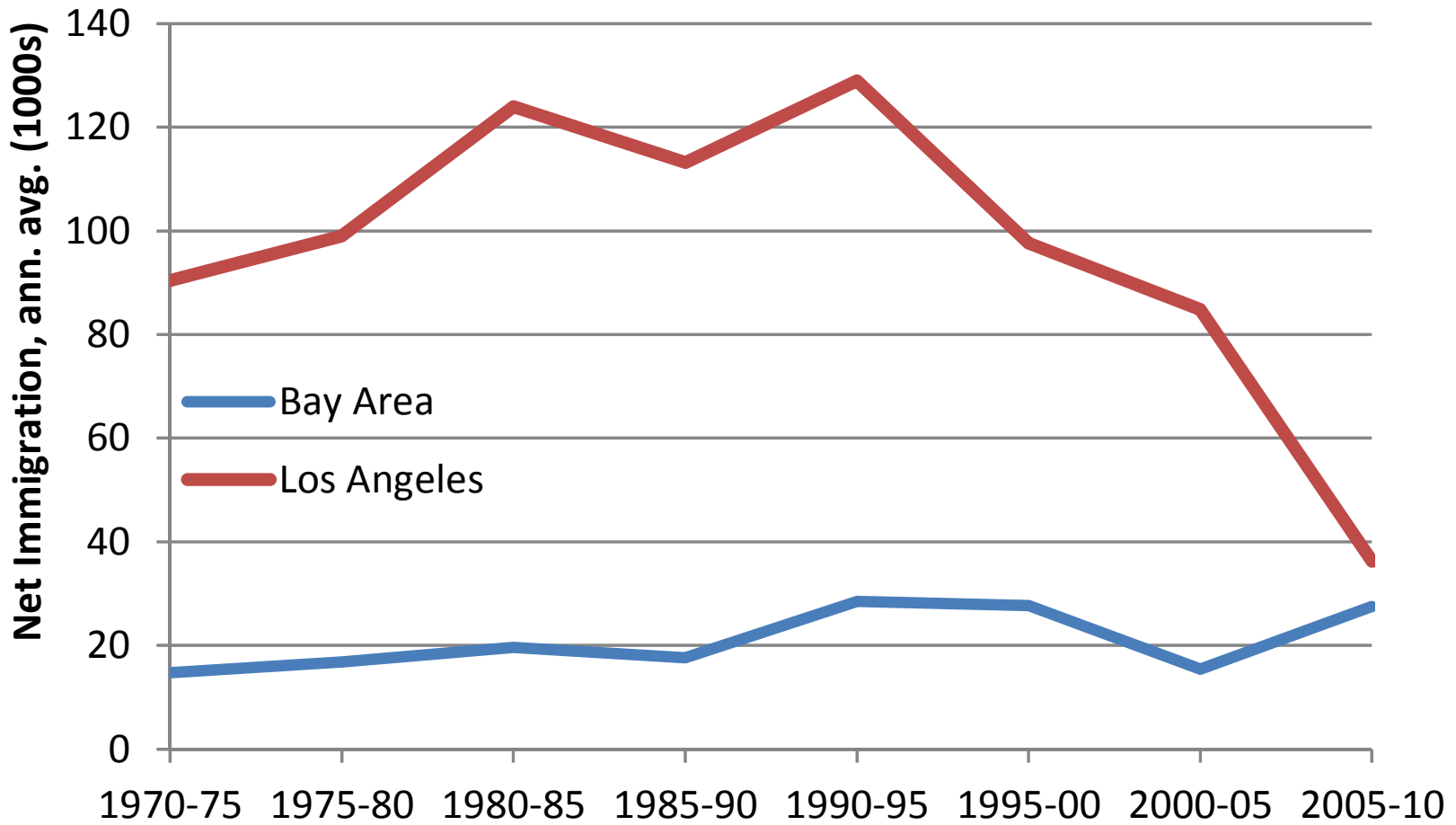
Net Domestic Migration, 1970-2010



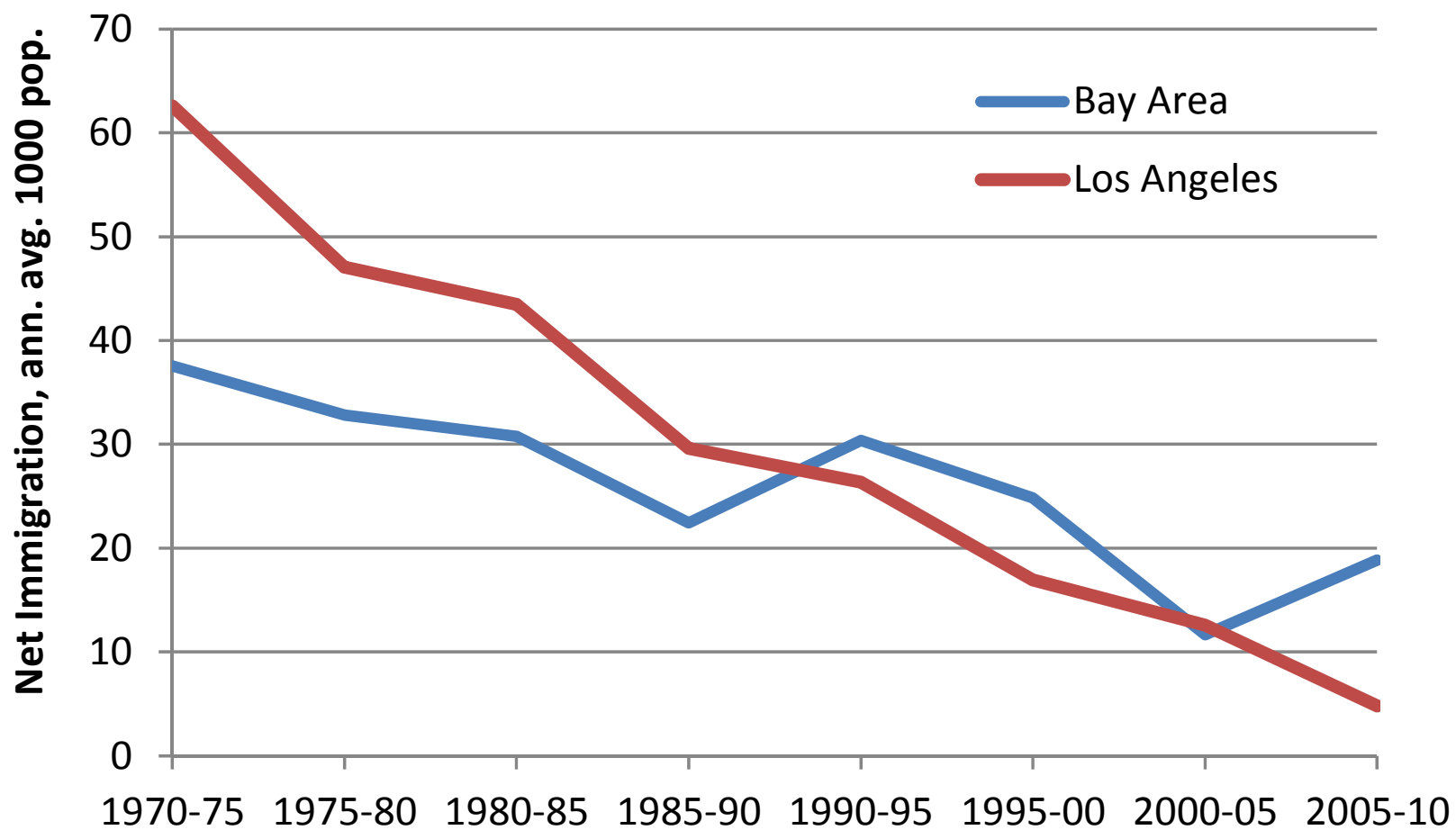
Net Immigration, 1970-2010



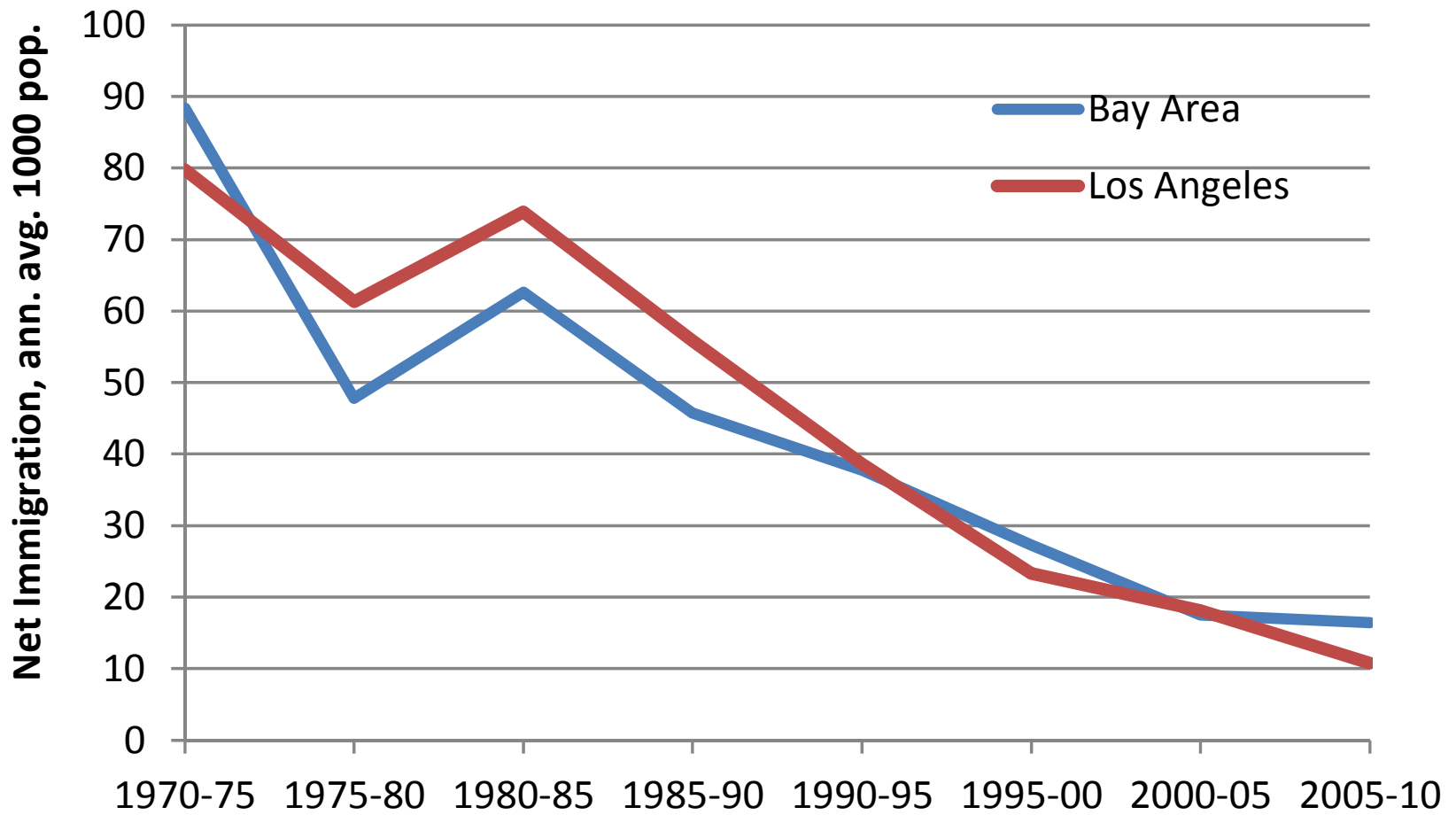
Net Immigration, Hispanics, 1970-2010



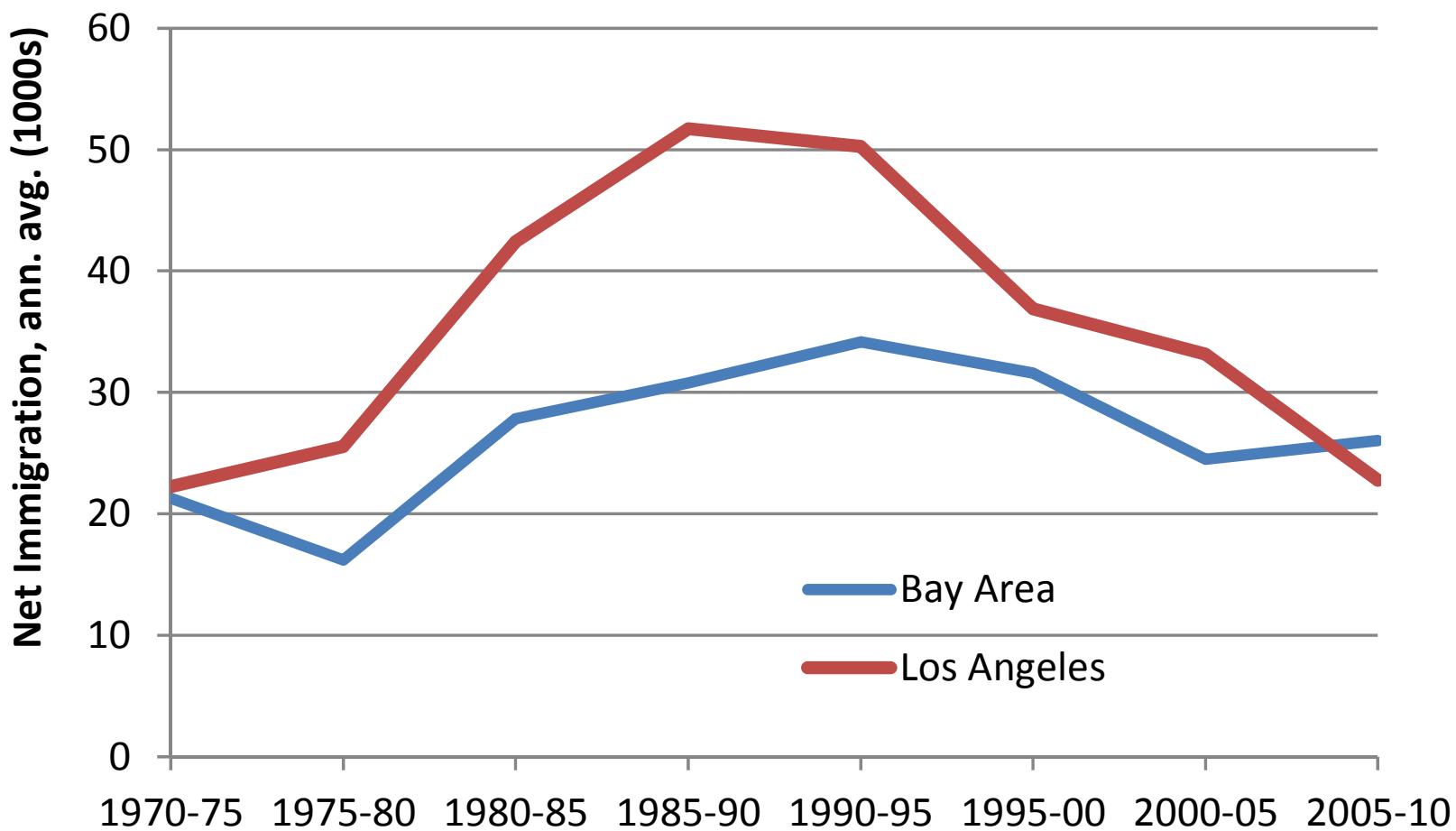
Net Immigration, Hispanics, 1970-2010



Net Immigration, Asians, 1970-2010



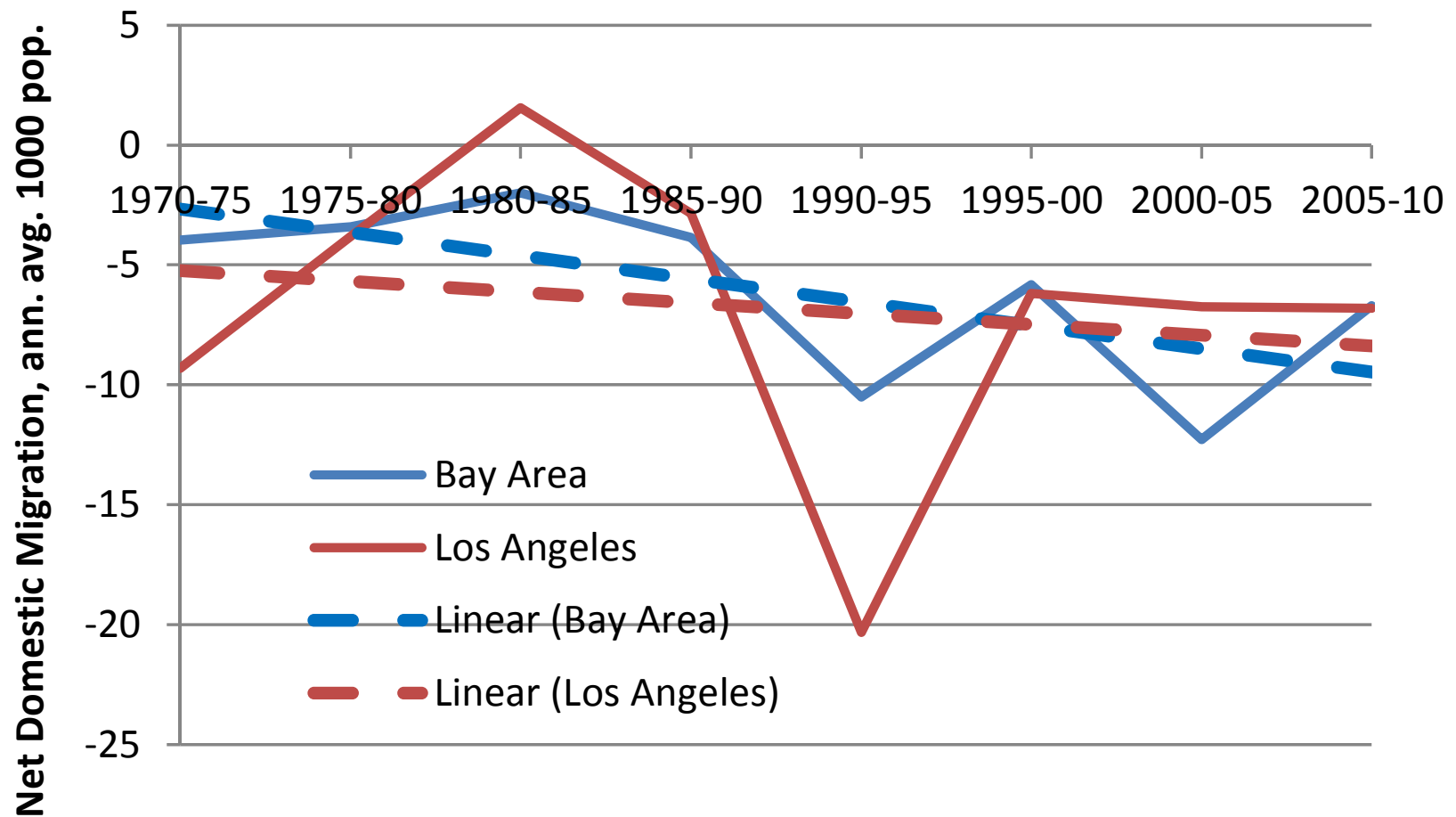
Net Immigration, Asians, 1970-2010



Are there patterns in past regional migration that are useful guides for projections?

- Life cycle
- Regional cycles, economic or other
- Trend

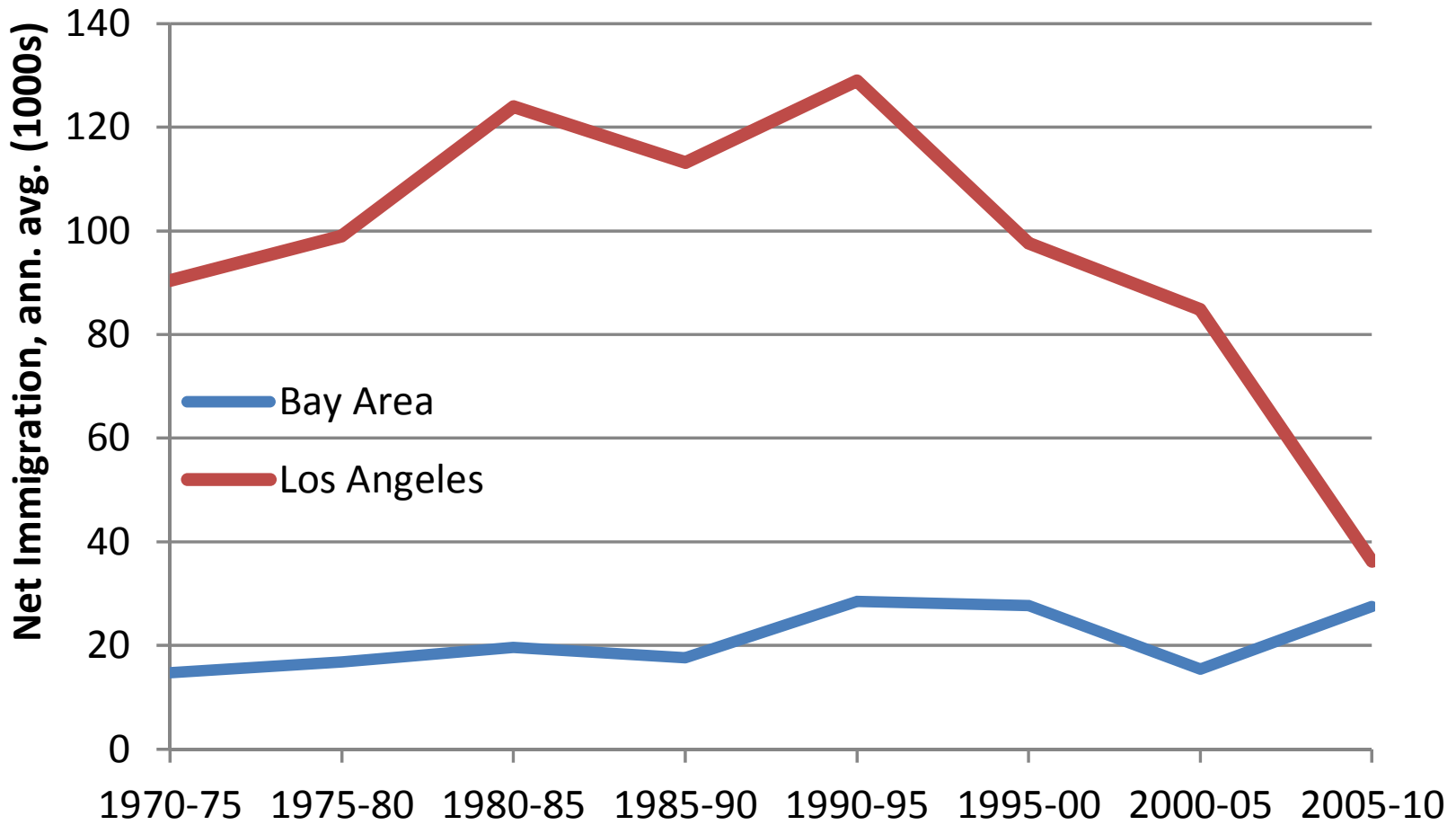
Net Domestic Migration, 1970-2010



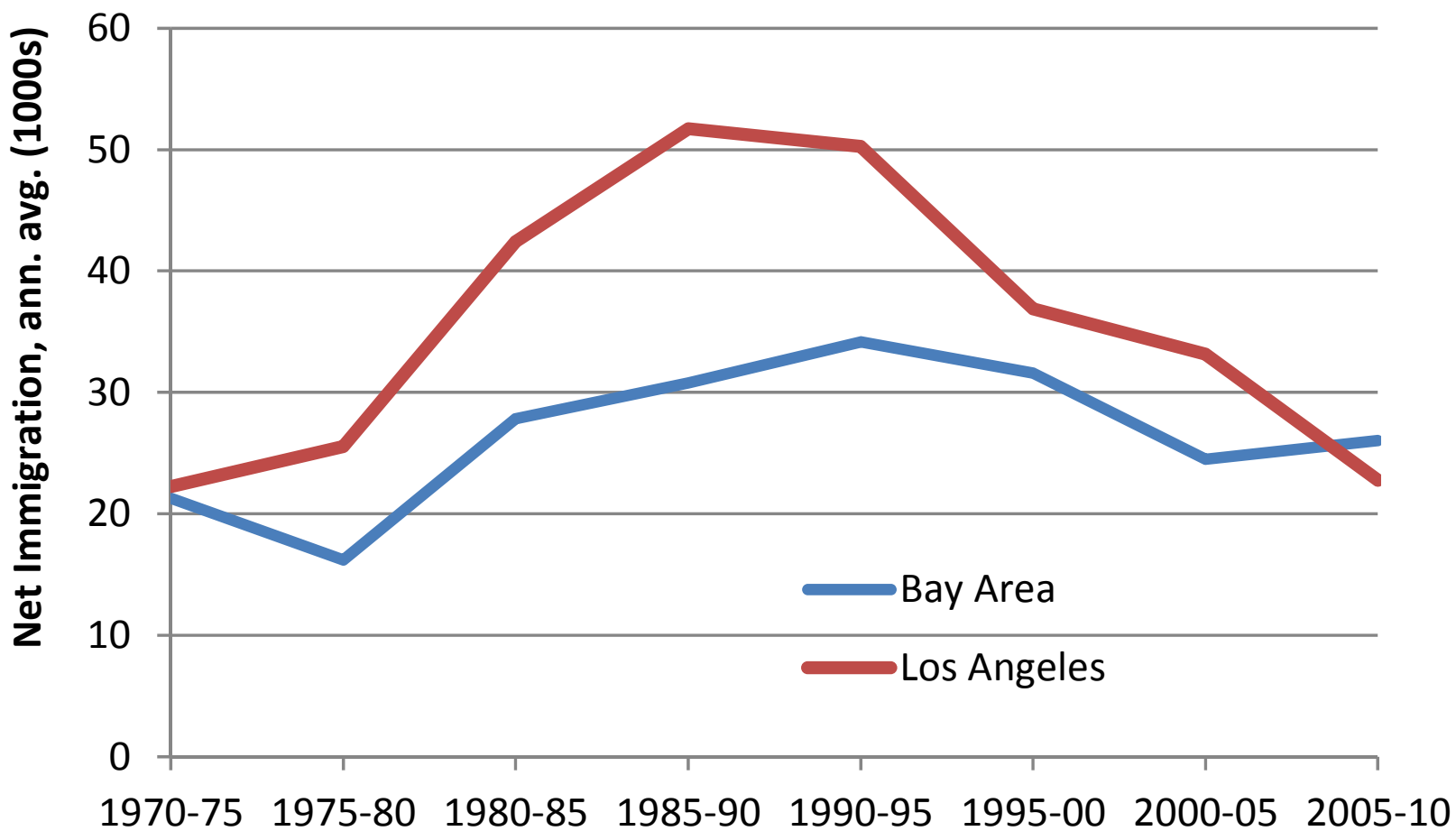
Are there patterns in past regional migration that are useful guides for projections?

- Life cycle
- Regional cycles, economic or other
- Trend
- Discrete transformations or disruptive changes

Net Immigration, Hispanics, 1970-2010



Net Immigration, Asians, 1970-2010



Thank You

John Pitkin

<john_pitkin@earthlink.net>