

Birth Trends in Southern California

Janna Z. Goldberg

June 1, 2015

26th Annual USC-SCAG
Demographic Workshop

How has the Great Recession affected fertility in Southern California? And what comes next?

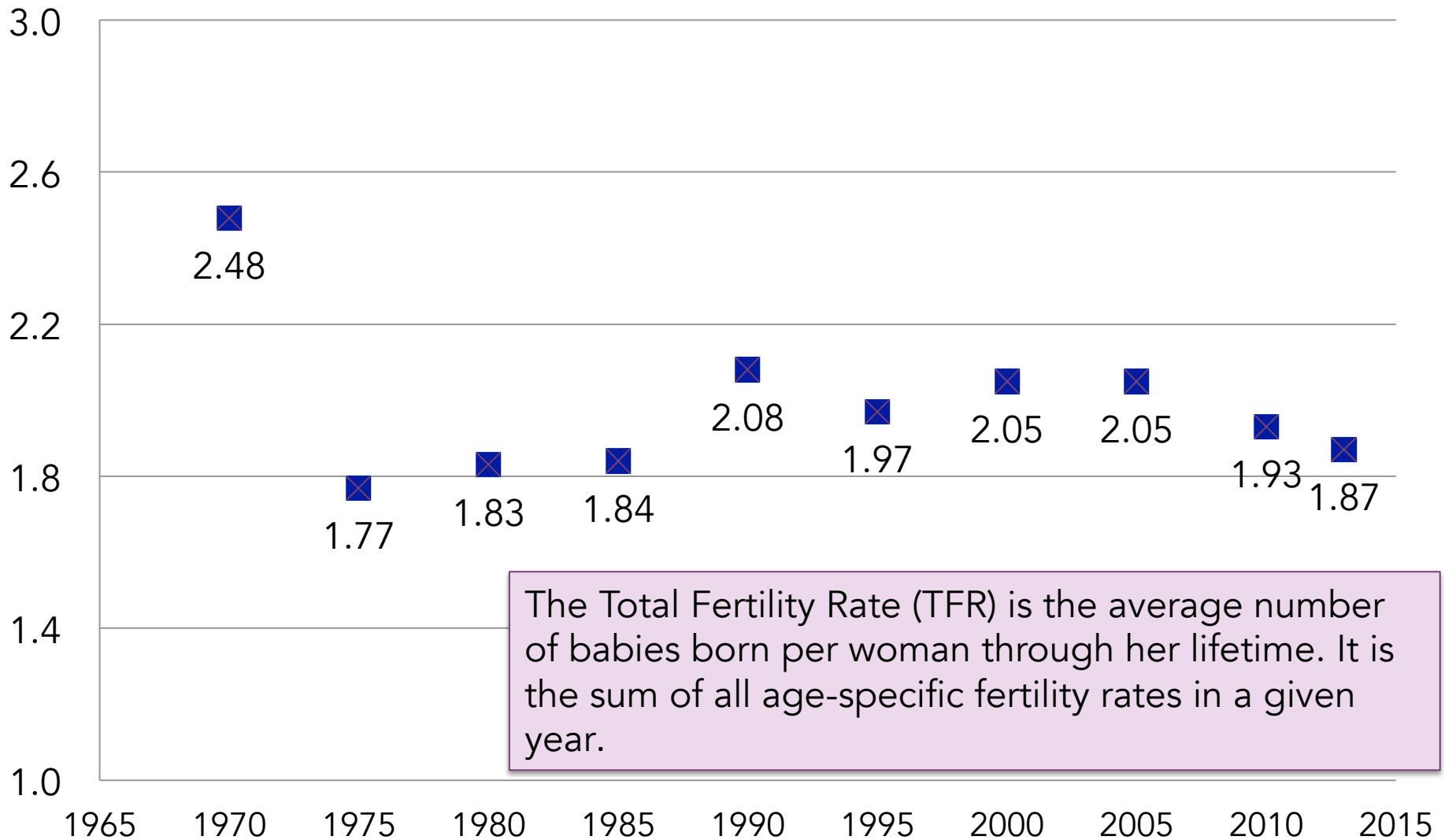
Birth Trends in Southern California

Changes in fertility rates

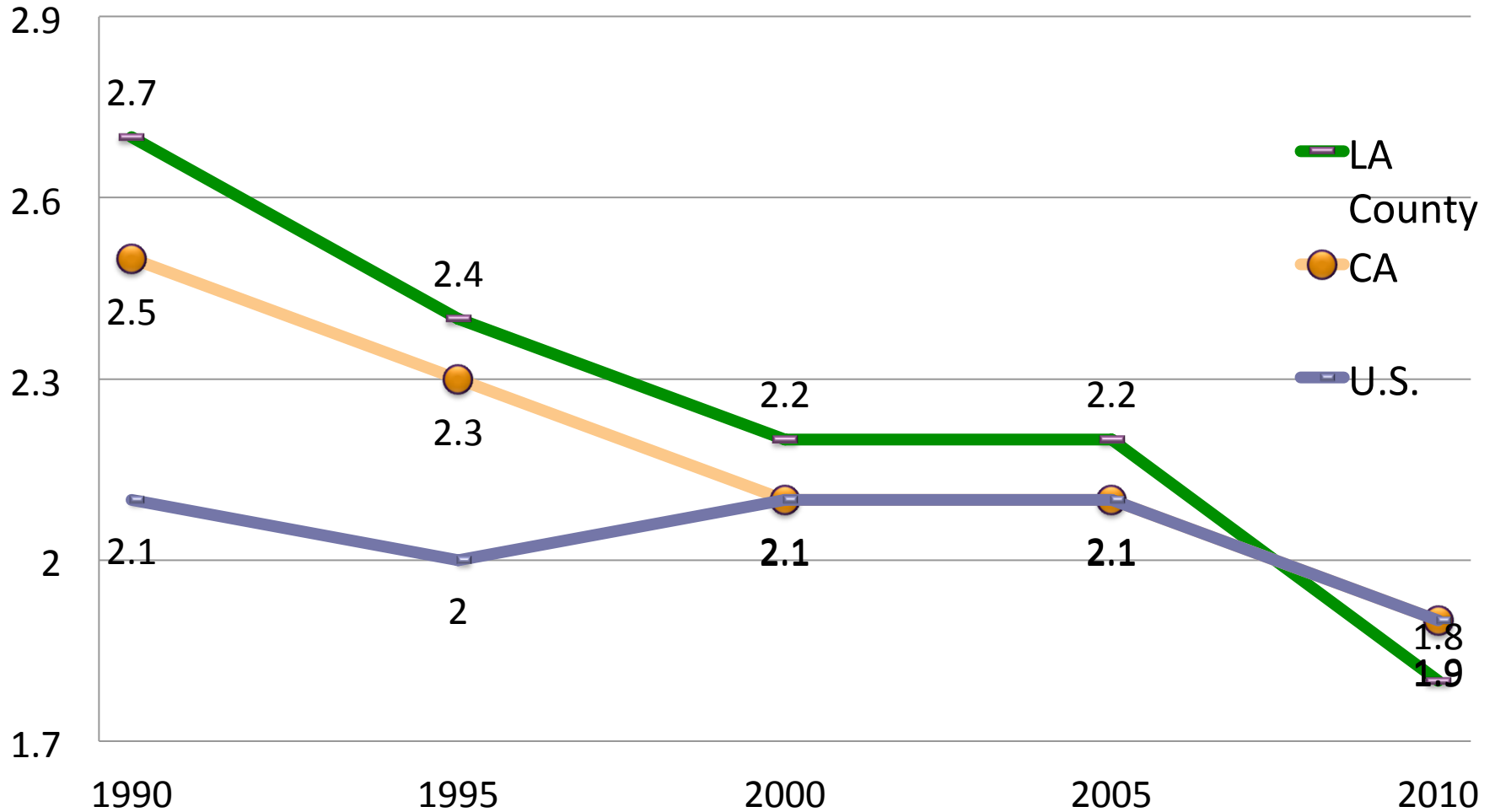
Who are the mothers?

Changes in fertility rates

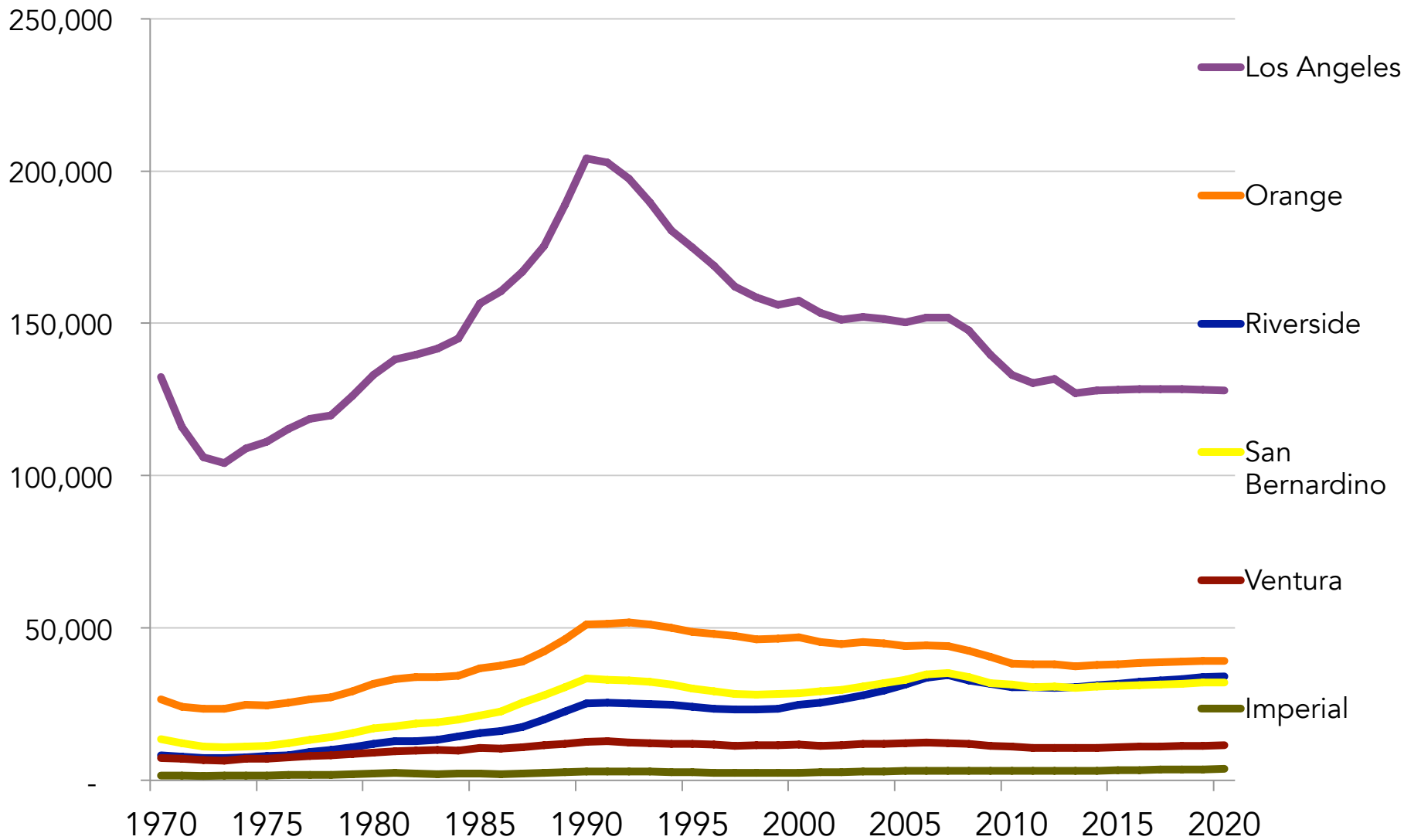
Total Fertility Rate in the United States 1970-2013



Total Fertility Rate: U.S., CA and LA County



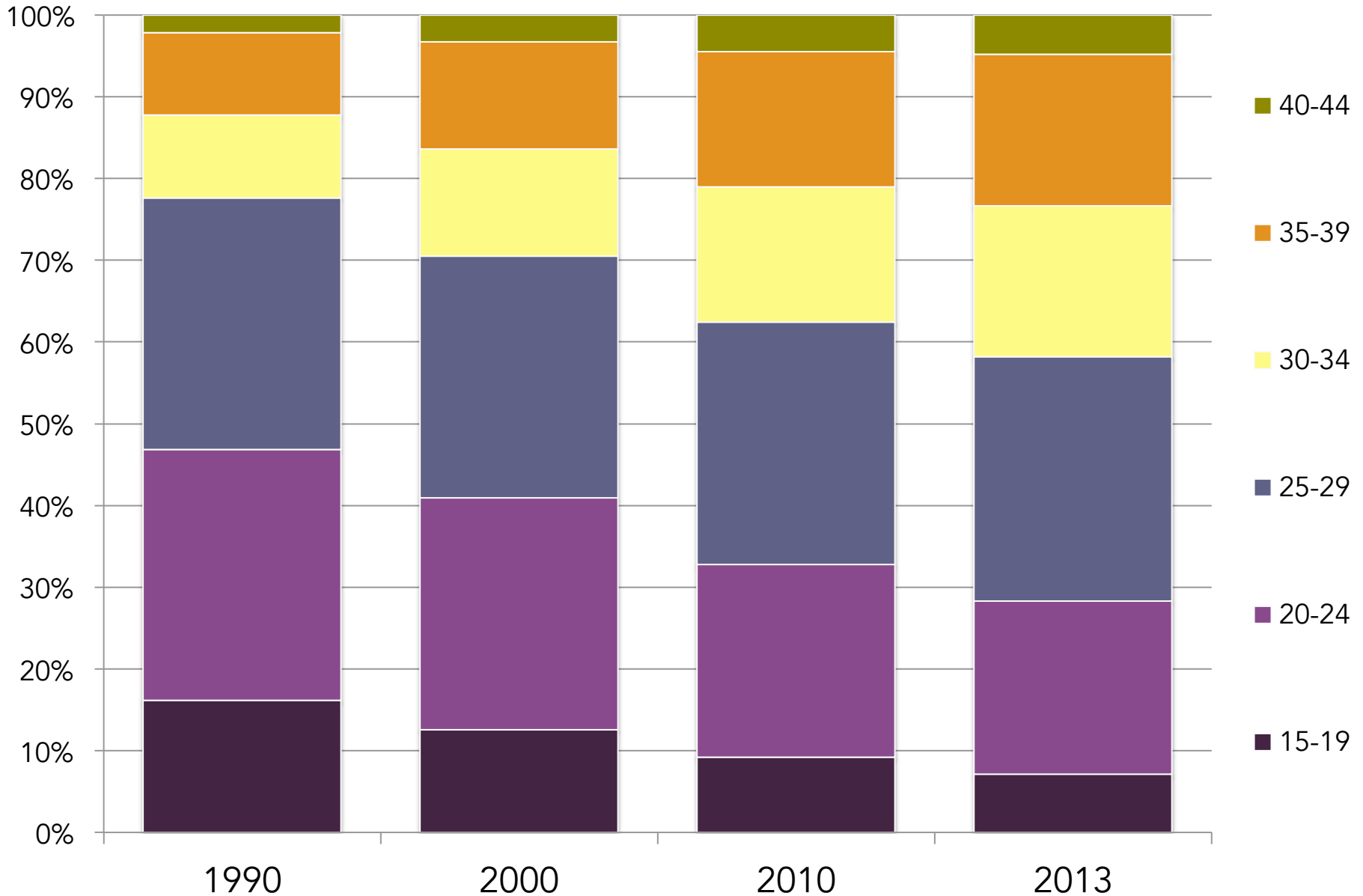
Number of Births by County, 1970-2020



Source: CA DOF Historical and Projected Births, 2014

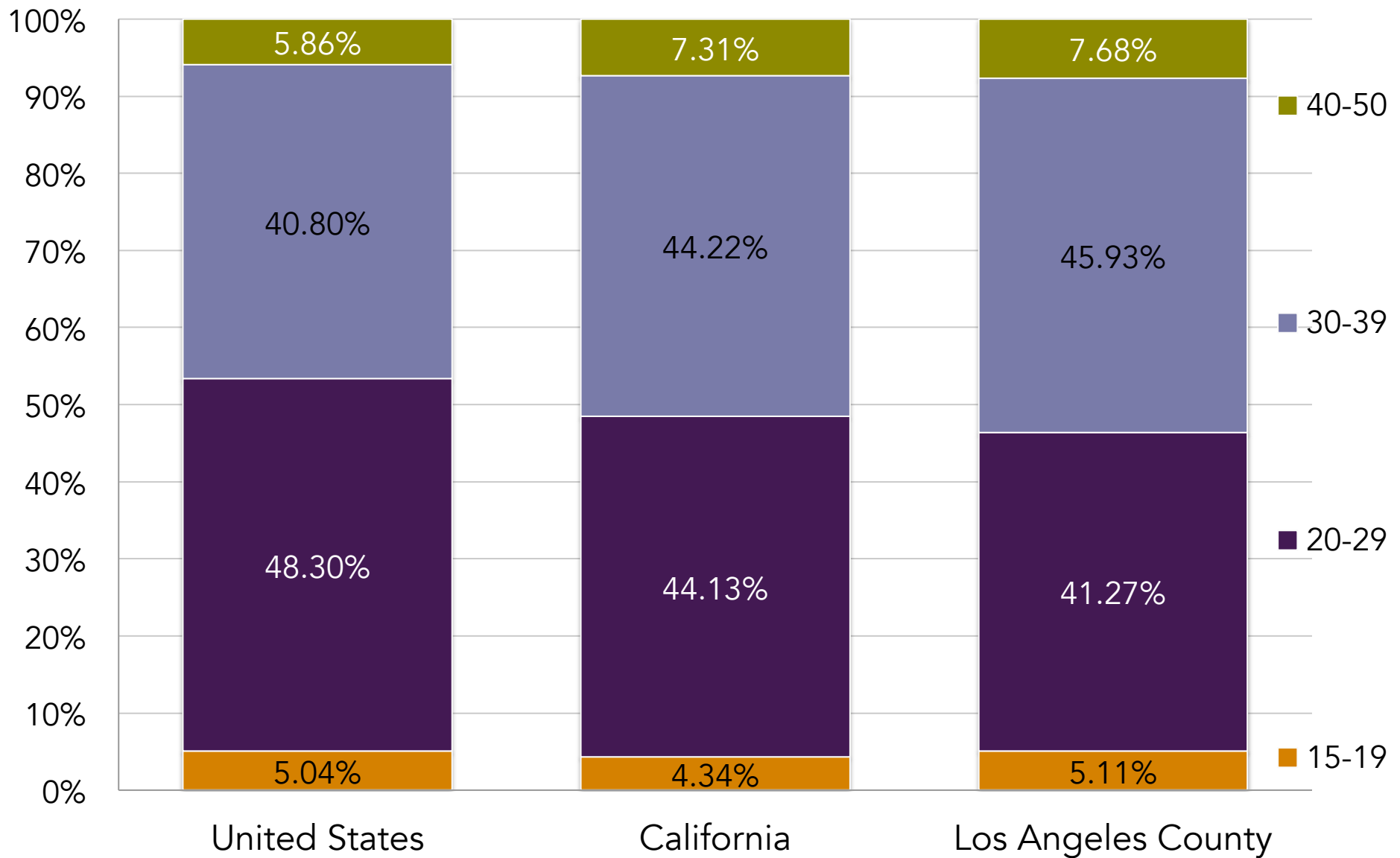
Who are the mothers?

Births by age in California



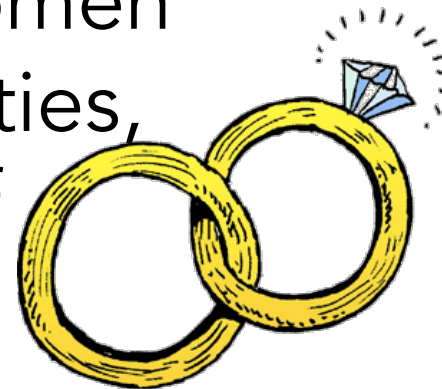
Source: California Department of Finance, 2014

Births in 2013 by age groups: U.S., CA, LA County



Changes in marriage and fertility

- Not only are fewer women having babies, but significantly fewer of those babies are to married mothers
- Age at first marriage continues to rise; during and post Recession marriage and childbearing delayed
- Births on the rise to unmarried women than married in most SCAG Counties, although some rise in presence of unmarried partner

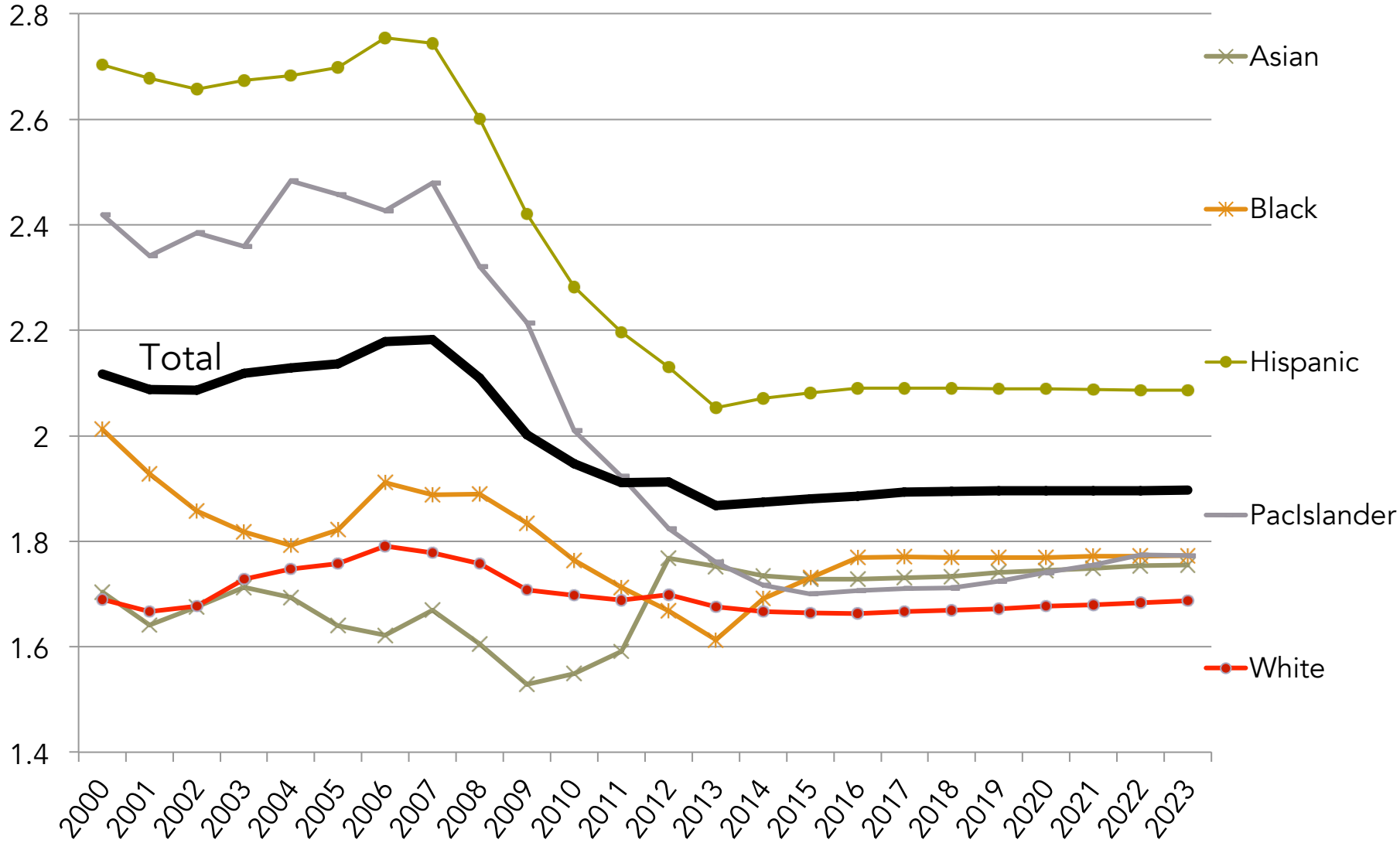


Marital Status of Mothers by County

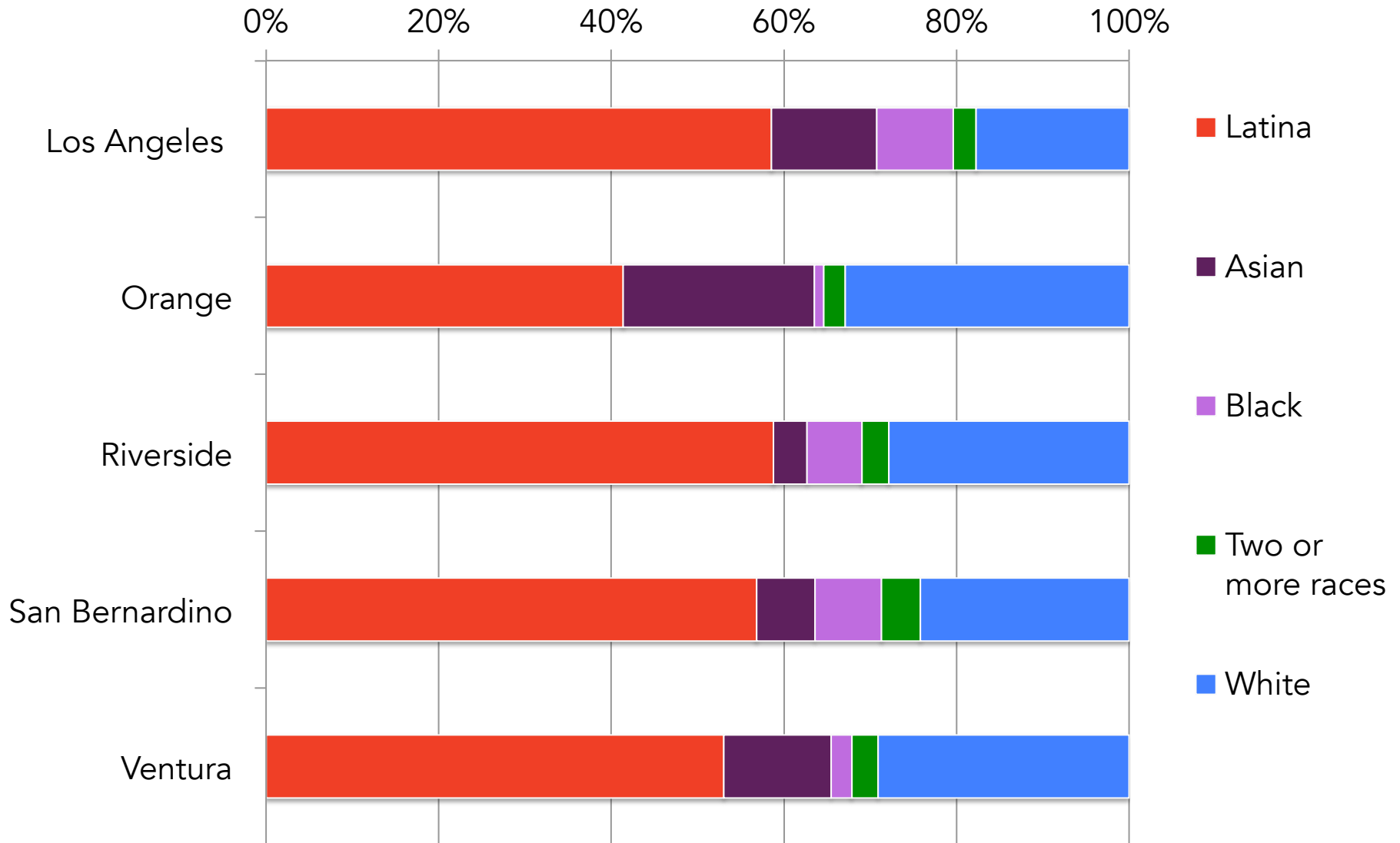
	2006	2013
Los Angeles		
Married	67.2%	59.6%
Unmarried	32.8%	40.4%
<i>partner</i>	8.5%	11.6%
Orange		
Married	76.7%	77.0%
Unmarried	23.3%	23.0%
<i>partner</i>	6.0%	7.2%
Riverside		
Married	68.0%	54.5%
Unmarried	32.0%	45.5%
<i>partner</i>	9.5%	14.3%
San Bernardino		
Married	68.9%	54.0%
Unmarried	31.1%	46.0%
<i>partner</i>	12.1%	13.8%
Ventura		
Married	70.6%	63.0%
Unmarried	29.4%	37.0%
<i>partner</i>	10.6%	5.4%

15%
difference

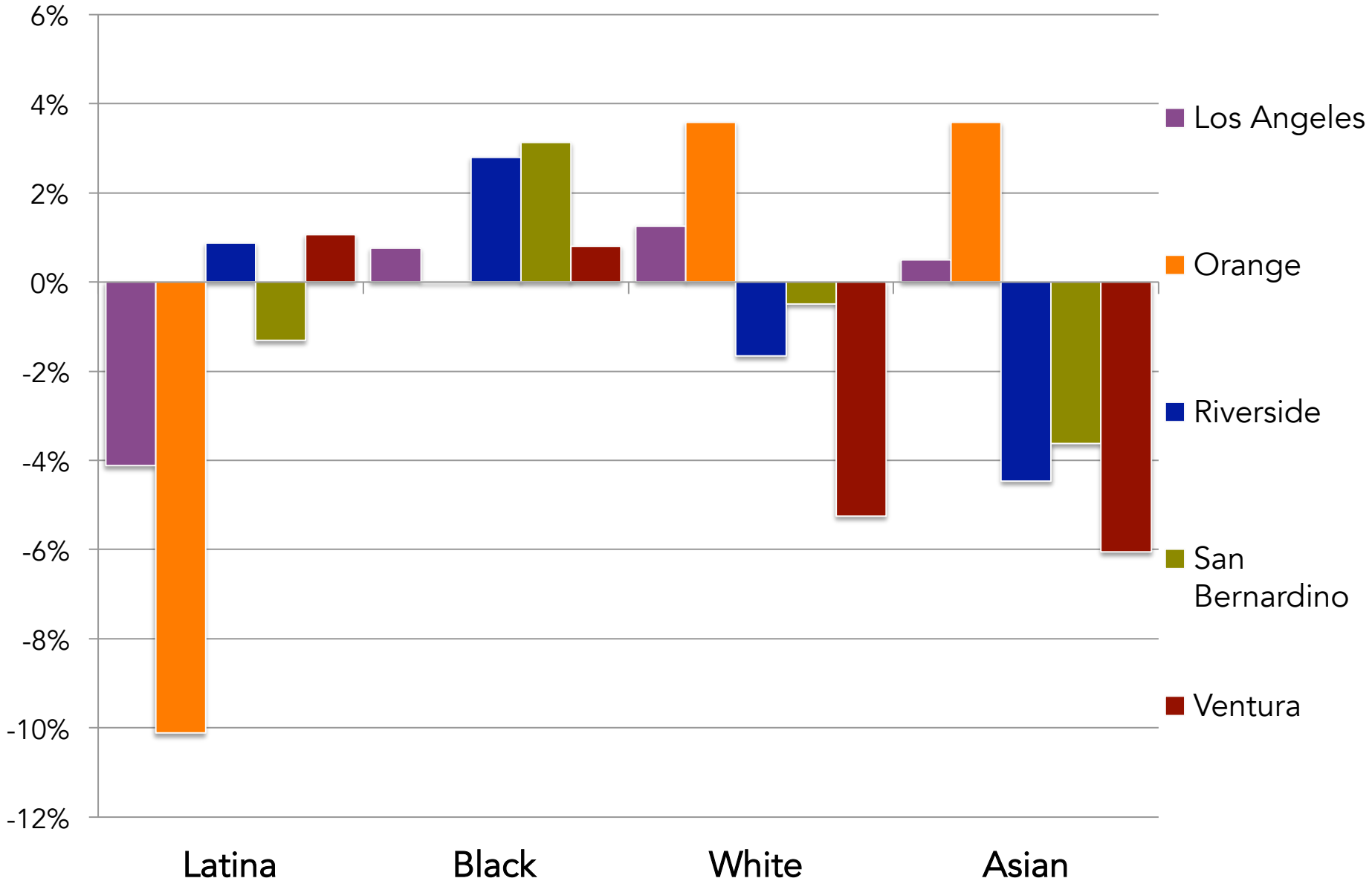
Total Fertility Rate in California, by Race/Ethnicity, 2000-2023



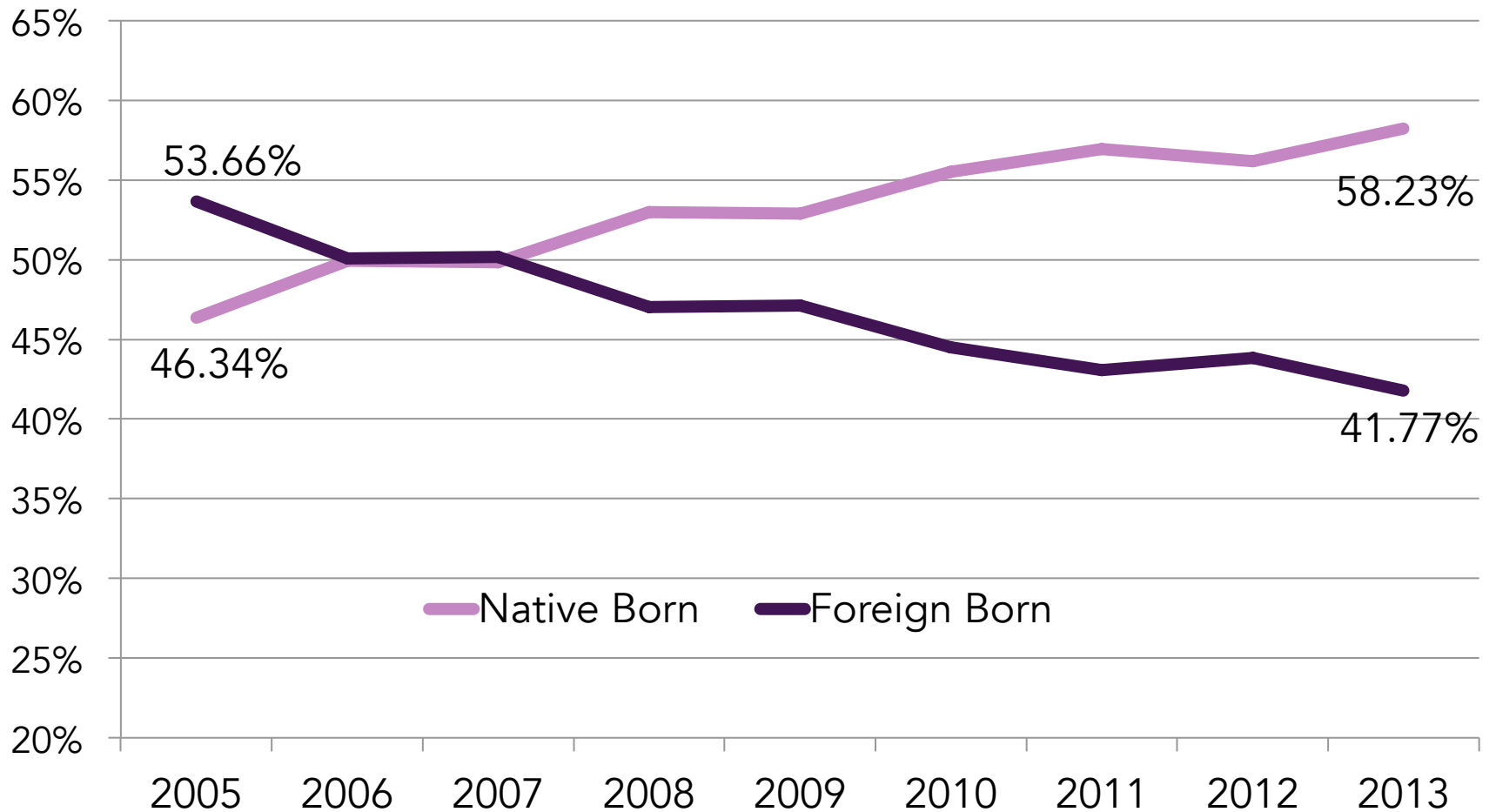
Births by race/ethnicity 2013



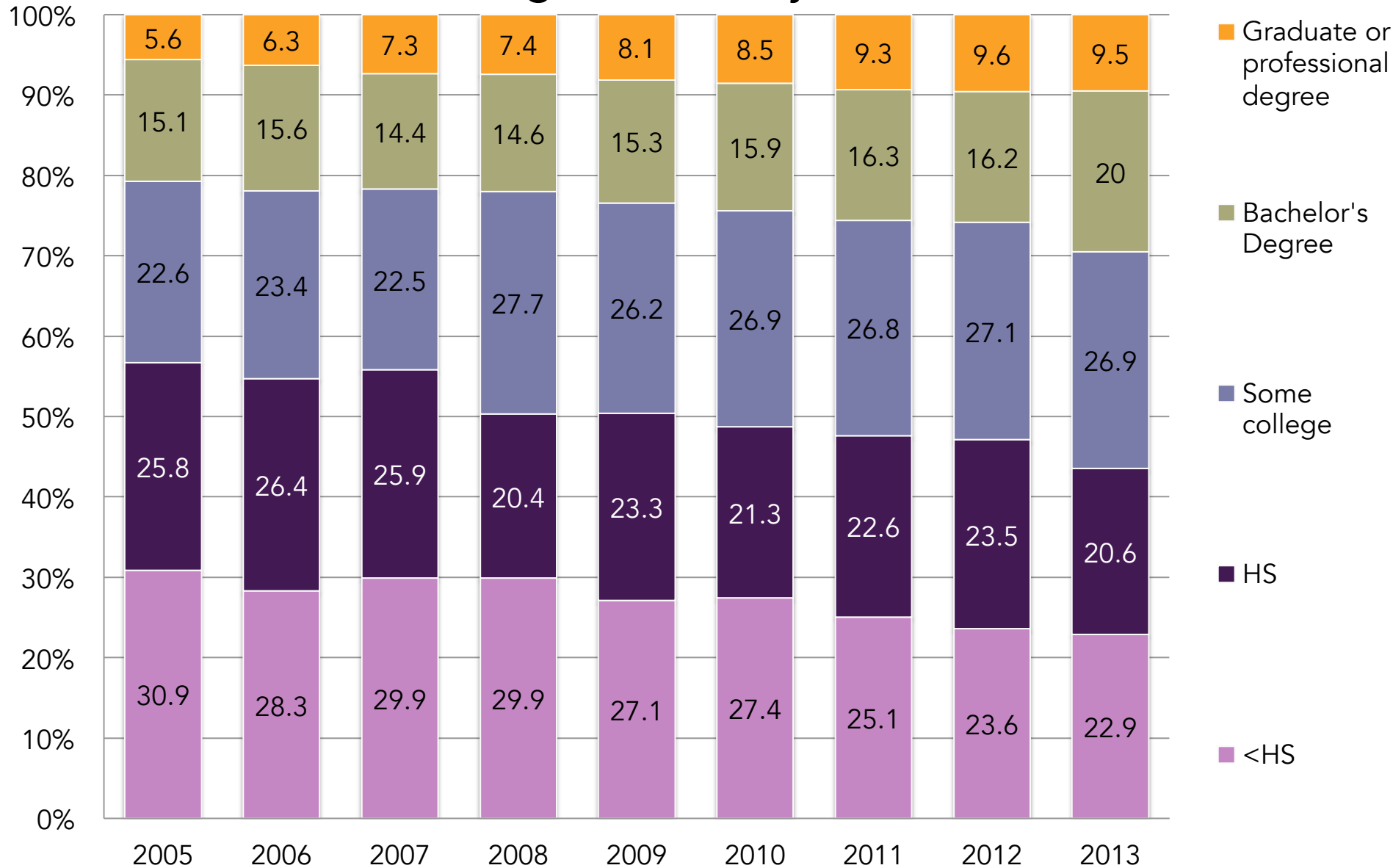
Change in Percent Share of Births 2007-13



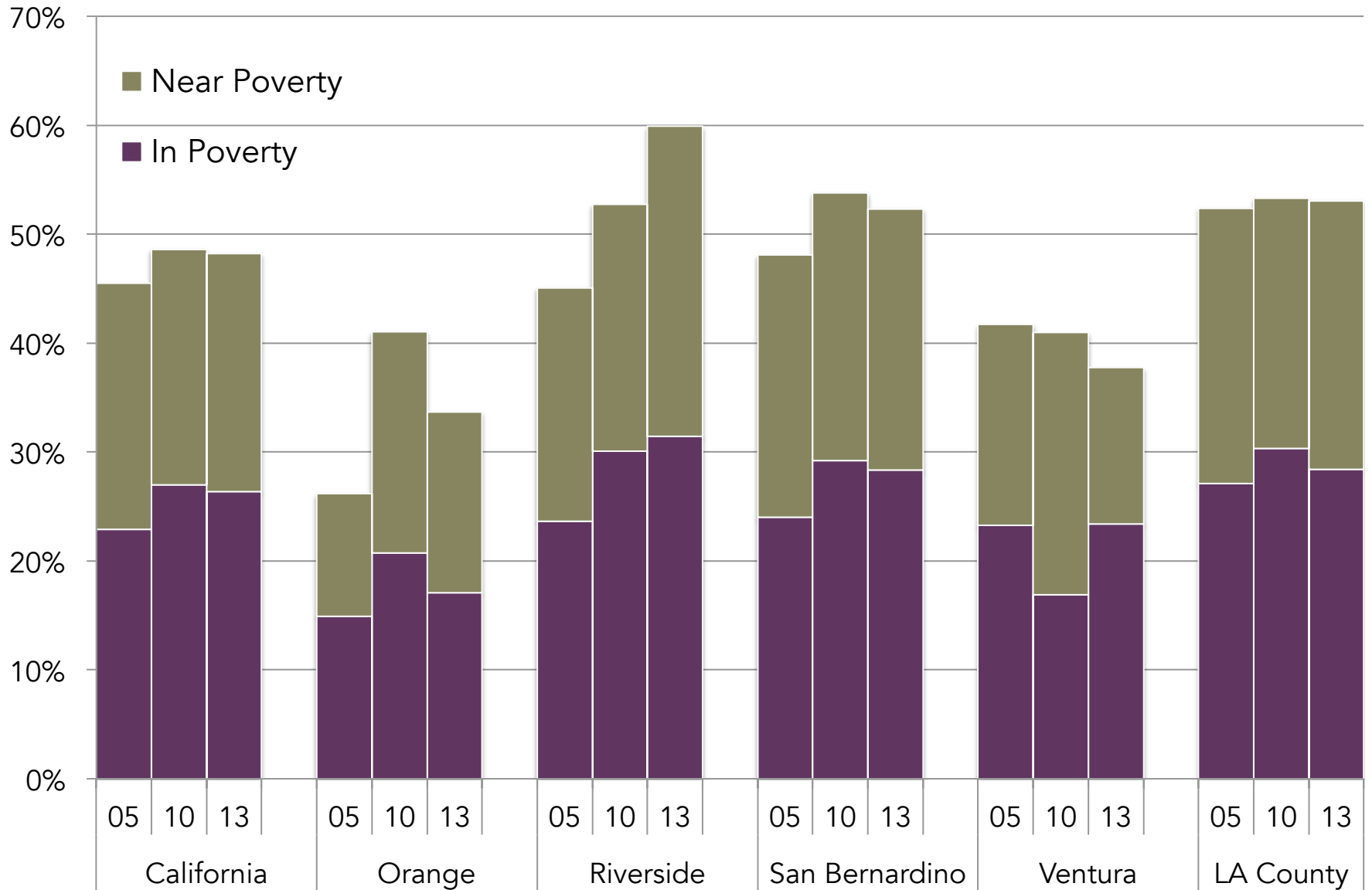
Percent distribution of births by nativity of mother Los Angeles County, 2005-2013



Educational attainment of mothers Los Angeles County 2005-13



Poverty Status of mothers



Conclusions

- Births to native born women now outnumber births to immigrants
- Latina births have been most affected by the recession
- Births to married women have declined, but births to women with partners have gone up
- What does this all mean?

References

- Astone, Nan M., Martin, Steven and Peters, H. Elizabeth, 2015. Millennial Childbearing and the Recession. Urban Institute Research Paper
- Cherlin, A., Cumberworth, E., Morgan, S. P. & Wimer, C. (2013) The Effects of the Great Recession on Family Structure and Fertility, *Annals of the American Academy of Political and Social Science*, 650(1), 214-31
- Martin, J.A., Brady, H., Osterman M., Curtin S., & Matthews, T.J. (2015). "Births: Final Data for 2013." *National Vital Statistics Reports* 64 (1). Hyattsville, MD: Centers for Disease Control and Prevention, National Center for Health Statistics.
- State of California, Department of Finance, Demographic Research Unit. Historical and Projected State and County Births, 1970-2023, with Actual and Projected Fertility Rates by Mother's Age and Race/Ethnicity, 2000-2023. Sacramento, California: December 2014.
- United States Census Bureau, American Community Survey

Thank you

jzgoldbe@usc.edu