

USC-SCAG Demographic Workshop
June 26, 2017

Volatile Demographic Trends:
How High
How Low?

Dowell Myers

USC Sol Price
School of Public Policy

**Demographic Trends are
Highly Political**

What to Measure?
What Benchmarks to Compare?
What Interpretation to Draw?

**But the Demographic Trends
also are Bipartisan
and Even Connect us Together**

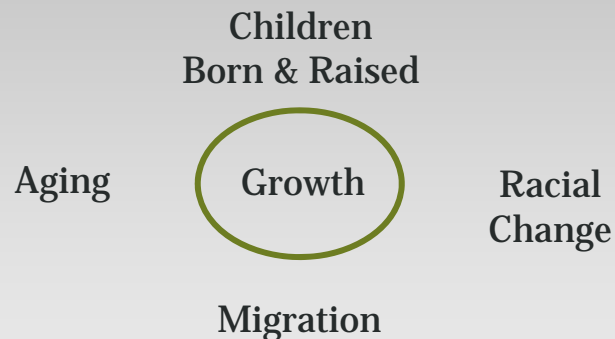
Dowell Myers, **USC** Price

Why are Demographic Trends Being Recognized as so Important?

1. Future consumers, workers, transportation users, housing occupants, and tax payers
2. Differences and disparities
(*critical view on trends*)
3. Social assets, connections and mutual benefits
(*pro-social view on trends*)

Dowell Myers, USC Price

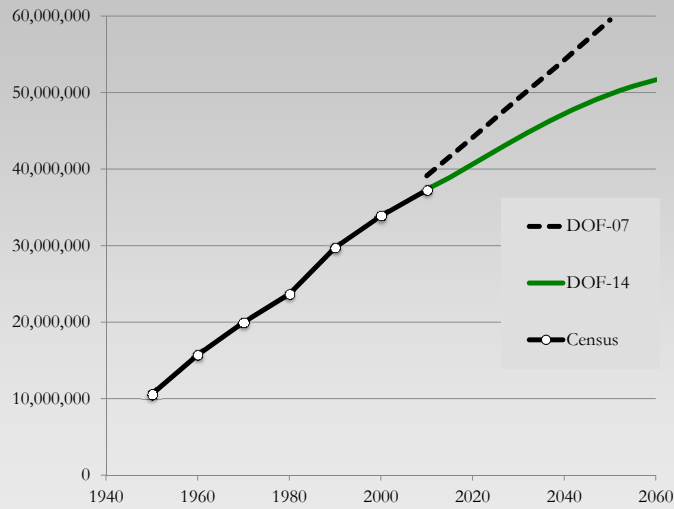
How Many Ways Can the Demographics Be Changing ??



Dowell Myers, USC Price

The Growth Outlook has been Changing

Total Population of California Slowdown in Growth Projections



Dowell Myers, USC Price

What Year Does California Reach 50 Million Population?

- Old Expectation = 2031
- New Outlook = 2055
a quarter century later

Source:
California Department of Finance, 2007 and 2017

Dowell Myers, USC Price

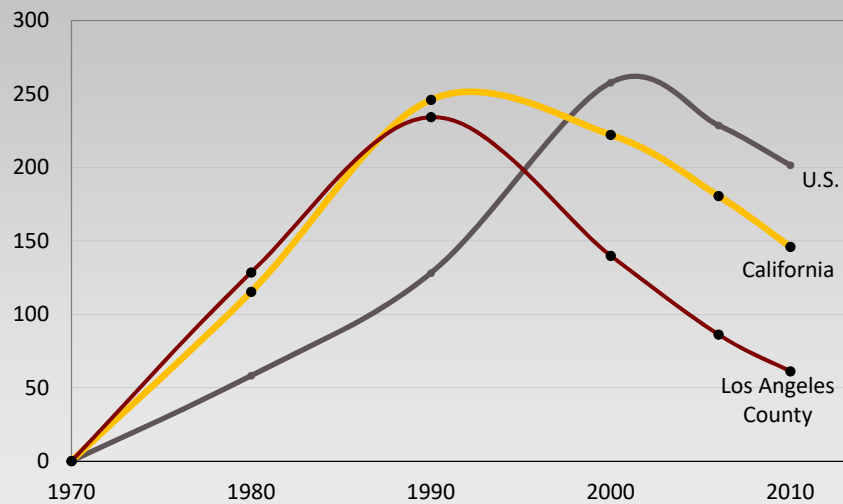
**Some of that Slowdown
Could be Due to
Fertility Decline**

next panel has details

**Migration
– and Immigration –
Have Radically Shifted
but
What Next??**

Annual Immigrant Arrivals

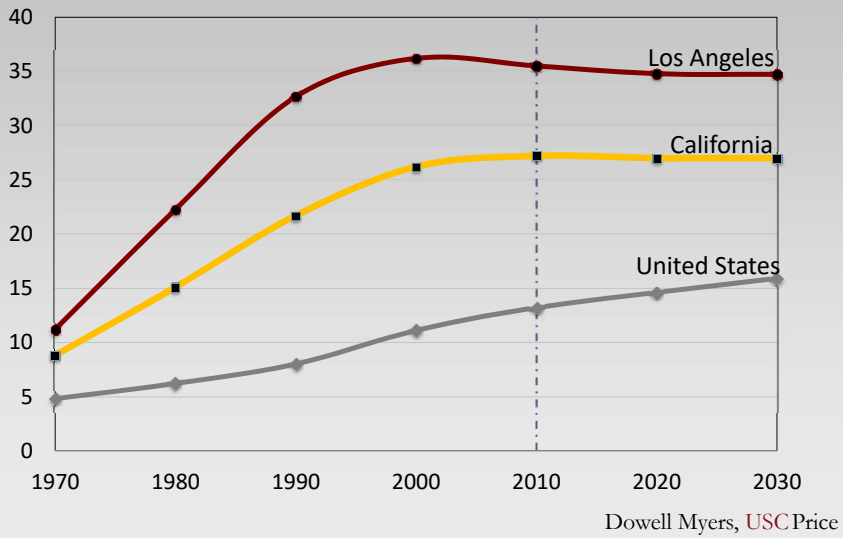
Percentage Change in Net Flow Since 1970



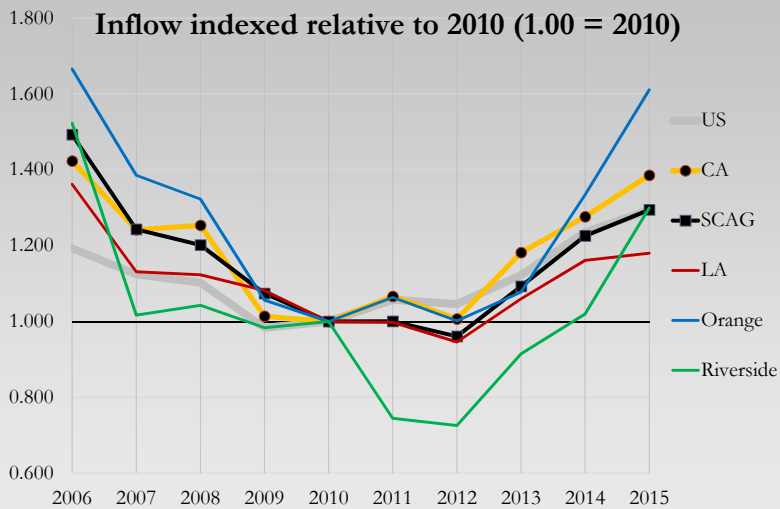
Source: U.S. Census 1970, 1980, 1990, 2000; American Community Survey 2006, 2008

Dowell Myers, USC Price

Foreign Born Share of The Population Leveling Off



Immigrant Arrivals Rebounding Post-2012



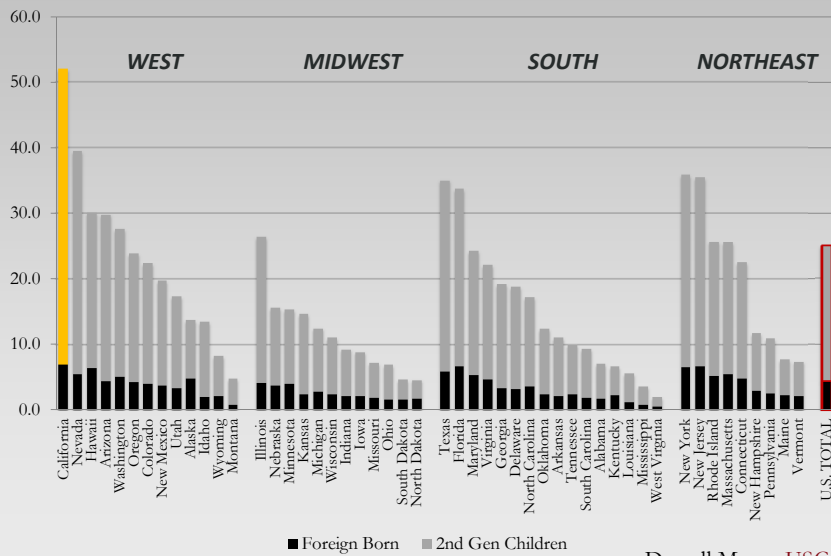
Source: American Community Survey, Geographic mobility, Foreign-born noncitizens from abroad

Dowell Myers, USC Price

The Immigration Trend Has Many Consequences

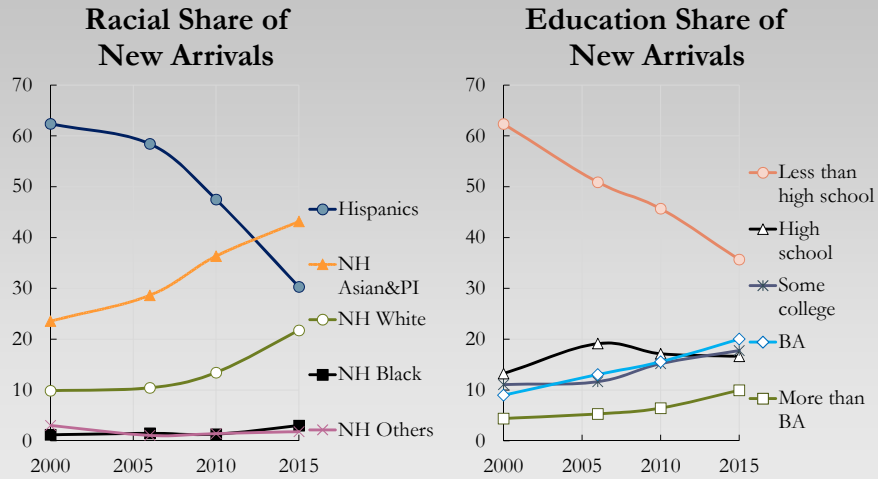
Among Demographics, It's the
Most Politically Contentious,
and Also the Most Volatile

Nativity of School-Age Children in 2010
Percent of States' Children who are of Immigrant Origin



Dowell Myers, USC Price

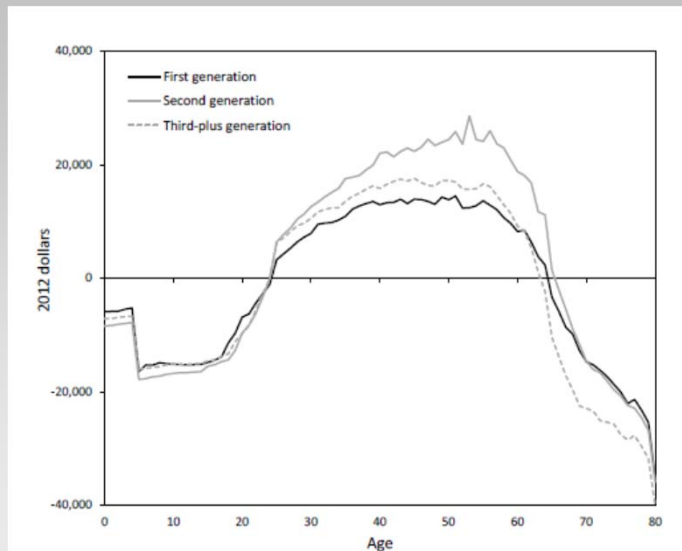
Changing Characteristics of Immigrant Arrivals in Southern California, Post-2000



Source: Arrivals in last 5 years; 2000 Census and 2006, 2010, and 2015 1-year ACS data, in the Integrated Public Use Microdata Series (IPUMS)

Dowell Myers, USC Price

Net Fiscal Impact in 2012, per Capita, by Age and Generation, Including All Levels of Government



First = foreign born

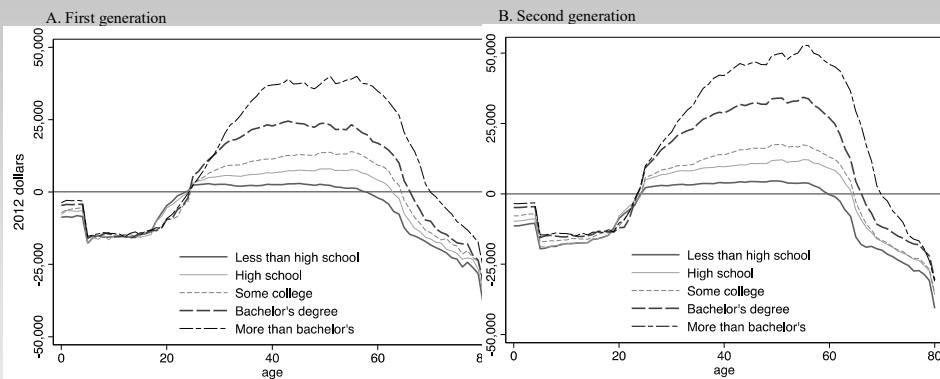
Second = Immig parents

Third = Native parents

Source: Blau and Mackie (2016, 2017) National Academy of Sciences report, based on (2011-2013 March Current Population Surveys)

Dowell Myers, USC Price

Net Fiscal Impact in 2012, per Capita, by Education Level, Age and Generation, Including All Levels of Government



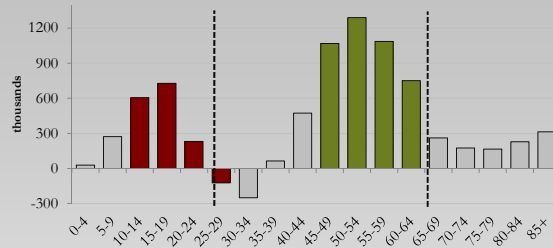
Source: Blau and Mackie (2016, 2017) National Academy of Sciences report, based on (2011-2013 March Current Population Surveys)
Figure 8.21

Dowell Myers, USC Price

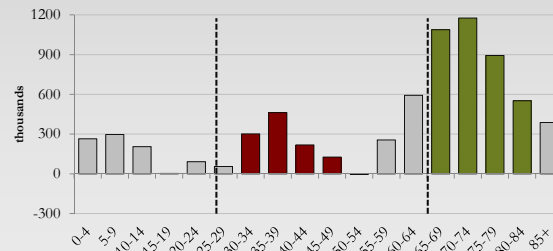
Meanwhile
Aging Continues
– Unstoppable –
But With Different Results
Each Decade

Growth by Age in California: Then and Now

1990-2010



2010-2030

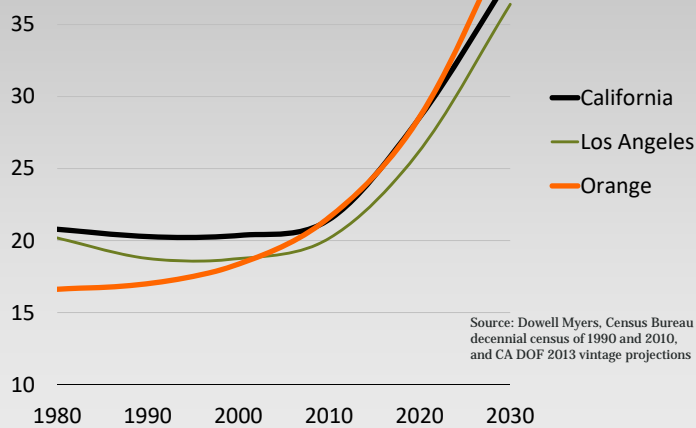


Source: Dowell Myers, Census Bureau decennial census of 1990 and 2010, and CA DOF 2014 vintage projections

Dowell Myers, USC Price

Senior Ratio Soars After 2010

45
Seniors (65+) per 100
Working Age (25-64)



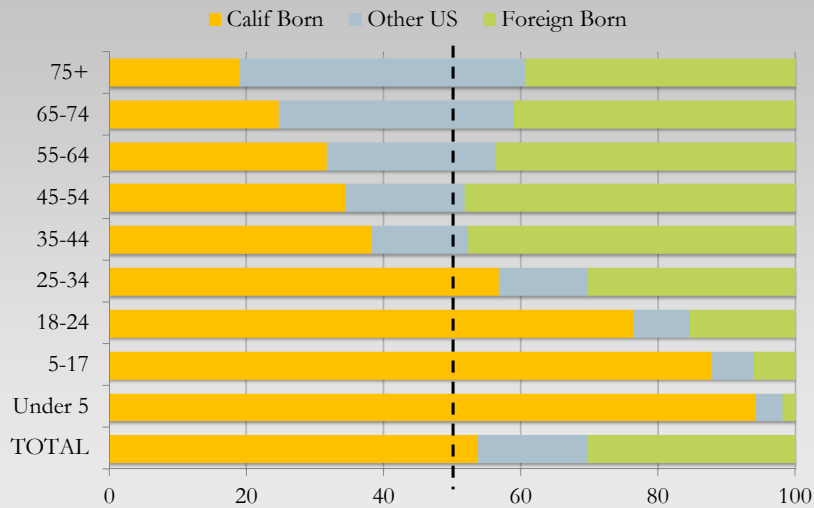
Source: Dowell Myers, Census Bureau decennial census of 1990 and 2010, and CA DOF 2013 vintage projections

Dowell Myers, USC Price

The Homegrown Revolution

New Reliance on the Native Californians

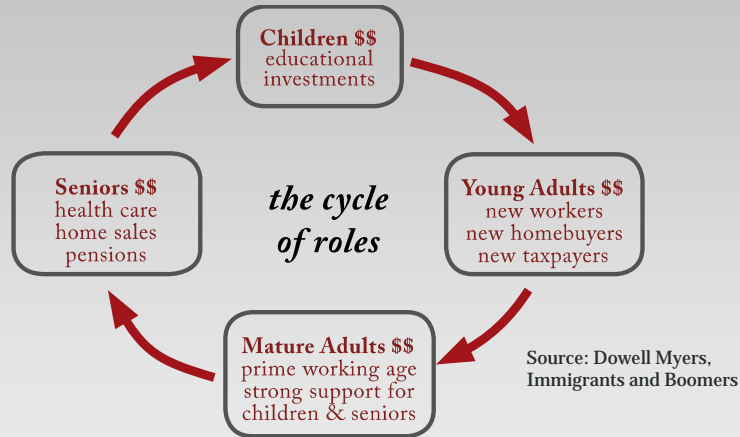
Birthplace Origins in Southern California, by Residents' Age in 2015



Source: Analysis of 2015 1-year ACS data, accessed in the Integrated Public Use Microdata Series (IPUMS)

Dowell Myers, USC Price

The Intergenerational Partnership Rediscovered



Dowell Myers, USC Price

Thank you

Research Sponsors

First 5 LA
**Lucile Packard
Foundation for
Children's Health**

For more Information on

**Generational
futures**

**Visit USC
PopDynamics**

Dowell Myers

USC Sol Price School of Public Policy