



SOUTHERN CALIFORNIA
ASSOCIATION OF GOVERNMENTS
900 Wilshire Blvd., Ste. 1700
Los Angeles, CA 90017
T: (213) 236-1800
www.scag.ca.gov

REGIONAL COUNCIL OFFICERS

President
Alan D. Wapner, San Bernardino
County Transportation Authority

First Vice President
Bill Jahn, Big Bear Lake

Second Vice President
Randon Lane, Murrieta

Immediate Past President
Margaret E. Finlay, Duarte

COMMITTEE CHAIRS

Executive/Administration
Alan D. Wapner, San Bernardino
County Transportation Authority

Community, Economic &
Human Development
Peggy Huang, Transportation
Corridor Agencies

Energy & Environment
Linda Parks, Ventura County

Transportation
Curt Hagman, San Bernardino
County

SPECIAL JOINT MEETING

REGIONAL COUNCIL AND POLICY COMMITTEES (CEHD, EEC AND TC)

Please Note Date and Time

Thursday, March 7, 2019

9:30 a.m. – 10:30 a.m.

SCAG MAIN OFFICE

900 Wilshire Blvd., Ste. 1700

RC Board Room

Los Angeles, CA 90017

(213) 236-1800

If members of the public wish to review the attachments or have any questions on any of the agenda items, please contact Tess Rey-Chaput at (213) 236-1908 or via email at REY@scag.ca.gov. Agendas & Minutes are also available at: www.scag.ca.gov/committees

SCAG, in accordance with the Americans with Disabilities Act (ADA), will accommodate persons who require a modification of accommodation in order to participate in this meeting. SCAG is also committed to helping people with limited proficiency in the English language access the agency's essential public information and services. You can request such assistance by calling (213) 236-1908. We request at least 72 hours (three days) notice to provide reasonable accommodations and will make every effort to arrange for assistance as soon as possible.

This Page Intentionally Left Blank



JOINT MEETING OF THE REGIONAL COUNCIL AND POLICY COMMITTEES (CEHD, EEC AND TC)

SPECIAL MEETING AGENDA

Southern California Association of Governments

900 Wilshire Boulevard, Suite 1700

Los Angeles, CA 90017

Thursday, March 7, 2019

9:30AM – 10:30AM

CALL TO ORDER AND PLEDGE OF ALLEGIANCE

The Honorable Alan D. Wapner, President

The Honorable Peggy Huang, Chair, Community, Economic and Human Development Committee

The Honorable Linda Parks, Chair, Energy and Environment Committee

The Honorable Curt Hagman, Chair, Transportation Committee

PUBLIC COMMENT PERIOD

Members of the public desiring to speak on items on the Special Meeting Agenda must fill out and present a Public Comment Card to the Assistant prior to speaking. Comments will be limited to three (3) minutes per speaker. The Chair has the discretion to reduce the time limit based upon the number of speakers and may limit the total time for all public comments to twenty (20) minutes.

DISCUSSION ITEM

- | | | |
|---|-------------------|-----------------|
| 1. Emerging Regional Issues: “Where Will We Grow?”
<i>(Kome Ajise, Director of Planning)</i> | Attachment | 60 mins. |
|---|-------------------|-----------------|

ANNOUNCEMENT/S

ADJOURNMENT

This Page Intentionally Left Blank



Southern California Association of Governments
900 Wilshire Boulevard, Suite 1700, Los Angeles, California 90017
March 7, 2019

To: Community Economic and Human Development Committee
Energy & Environment Committee (EEC)
Transportation Committee (TC)

INTERIM
EXECUTIVE DIRECTOR'S
APPROVAL

From: Kome Ajise, Director of Planning, (213) 236-1835, ajise@scag.ca.gov

Subject: Emerging Regional Issues: Where will we Grow?

RECOMMENDED ACTION:

For Information Only – No Action Required

STRATEGIC PLAN:

This item supports the following Strategic Plan Goal 1: Produce innovative solutions that improve the quality of life for Southern Californians.

EXECUTIVE SUMMARY:

As SCAG actively develops Connect SoCal, presentations from staff and invited experts will occur at joint and individual policy committee meetings through April 2019 to provide context for emerging regional issues. In February 2019, policy committee members focused on the question “Who are we planning for?” through engaging discussions with staff and invited experts. Presentations addressed changing demographics and how the region should plan for and adapt to shifting housing and mobility needs.

As part of today’s Joint Meeting, discussions with policy committee members will be enhanced with a panel consisting of policy experts and practitioners. These discussions will continue immediately after the Joint Meeting has concluded, with panelists presenting information and engaging in policy dialogue at individual Policy Committees. The panel and discussions will focus on the question “Where will we grow?” to balance resource conservation, housing demands, and economic expansion while adapting to a rapidly changing climate. These regional challenges necessitate thinking beyond jurisdictional boundaries. In April, the final part of the series will address the question “How will we connect?” These joint and individual policy committee meeting discussions will serve as precursors to May and June 2019 public workshops that will help stakeholders visualize opportunities and trade-offs associated with various potential regional futures.

BACKGROUND:

Over the past 15 months SCAG staff collaborated directly with local jurisdictions to collectively forecast the region’s population, household and employment growth through 2045. Based on local input information provided, it is estimated that by 2045 our region’s six counties and 197 local

jurisdictions will collectively add 3.6 million people for a total regional population of 22.5 million, and 1.6 million jobs for a total 10 million jobs.

Given these growth projections, balancing housing demands, resource conservation and economic expansion while adapting to a rapidly changing climate are regional challenges that necessitate thinking beyond jurisdictional boundaries. As our region's population and employment continue to increase through 2045 (and beyond), where should 3.6 million new people and 1.6 million new jobs be located to achieve regional goals?

Connect SoCal will not only match planned transportation investments with a regional development pattern to sustain anticipated levels of population and economic growth, it will also strive to reduce greenhouse gas (GHG) emissions by decreasing reliance on single occupancy vehicles and per-capita vehicle miles travelled (VMT). It is a priority for SCAG to support a regional development pattern that provides the opportunity for all households to access goods and services with shorter travel distances; to live closer to their workplaces; to reside in resilient communities; and to breathe cleaner air. Accordingly, a sustainable development pattern can be forecasted for the region integrated with the transportation network that:

- centers on community;
- expands mobility choices, including technology enhanced mobility options;
- maximizes established infrastructure;
- produces diverse housing types closer to jobs;
- delivers a robust economy;
- conserves natural and agricultural lands;
- adapts to a changing climate;
- supports resiliency to natural hazards;
- improves air quality; and
- provides equal opportunity to a safe and healthy environment.

Posing the question "Where will we grow?" is intended to initiate a discussion about the region's issues and policy choices prior to conducting public workshops throughout the region in May and June of 2019. To further this discussion, SCAG has invited a panel consisting of policy experts and practitioners to expand upon how local governments can seize opportunities to grow sustainably with community support.

- **Kate Meis**, Executive Director of the Local Government Commission, will provide insight on how leaders can create healthy, walkable, and resource-efficient communities.
- **Oliver Chi**, Monrovia City Manager, will elaborate on how to link local growth opportunities, mobility options and community needs.
- **Jay Eastman**, City of Riverside Principal Planner, can provide examples about how one of the region's fastest growing cities balances housing needs and transportation challenges.

Feedback from the "Emerging Regional Issues" series should help SCAG staff focus on significant areas and compose Connect SoCal to reflect comments emphasized by SCAG's policy committees.

As policy discussions proceed within this broad framework, it is important to reference draft plan goals adopted by the Regional Council in September 2018. These draft goals, which can serve as essential guides and touchstones as the plan is developed, are as follows:

1. Encourage regional economic prosperity and global competitiveness.
2. Improve mobility, accessibility, reliability, and travel safety for people and goods.
3. Enhance the preservation, security, and resilience of the regional transportation system.
4. Increase person and goods throughput and travel choices within the transportation system.
5. Reduce greenhouse gas emissions and improve air quality.
6. Support healthy and equitable communities.
7. Adapt to a changing climate and support an integrated regional development pattern and transportation network.
8. Leverage new transportation technologies and data-driven solutions that result in more efficient travel.
9. Encourage development of diverse housing types in areas well supported by multiple transportation options.
10. Promote conservation of natural and agricultural lands and restoration of critical habitats.

FISCAL IMPACT:

None.

ATTACHMENT(S):

1. PowerPoint Presentation - "Where Will We Grow?"

This Page Intentionally Left Blank



Where Will We Grow?

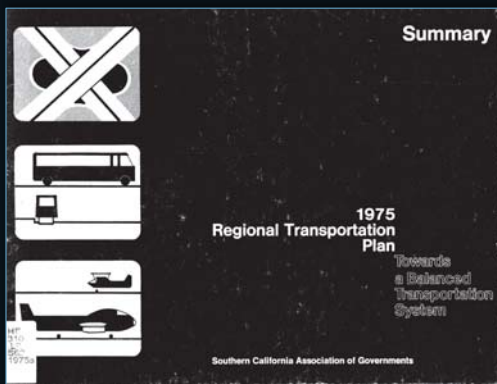
An Integrated Regional Development Pattern & Transportation Network

Kome Ajise
Planning Director
March 7, 2019

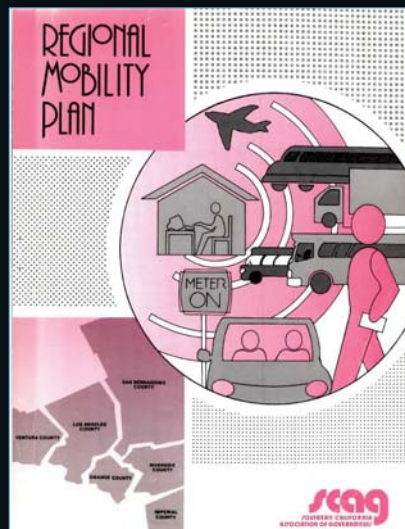
www.scag.ca.gov



SCAG's Regional Planning



1975



1989



2012

WHAT IS IT?

WHAT IT IS NOT

Forecasted Regional Development

Zoning or General Plan

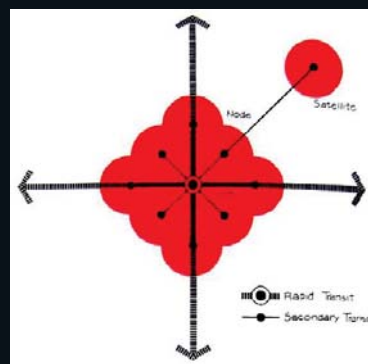
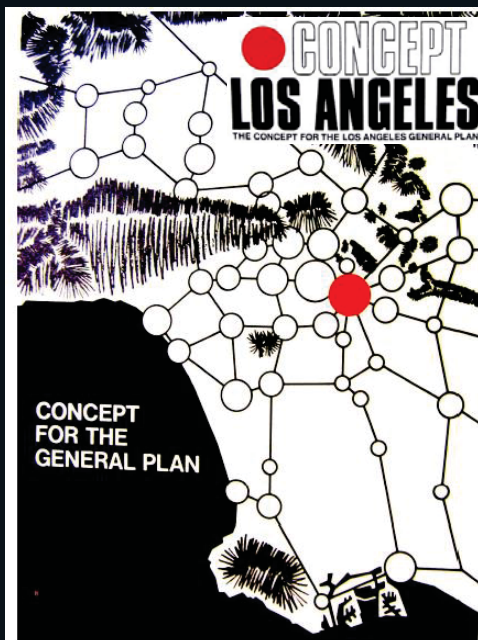
Guidance

Mandate

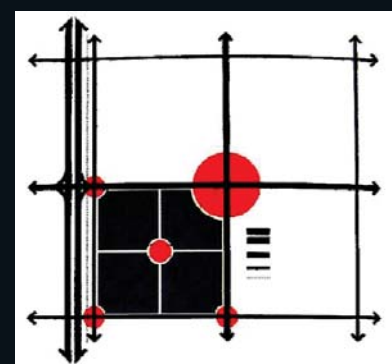
Vision Plan

Guarantee

1970 Centers Concept

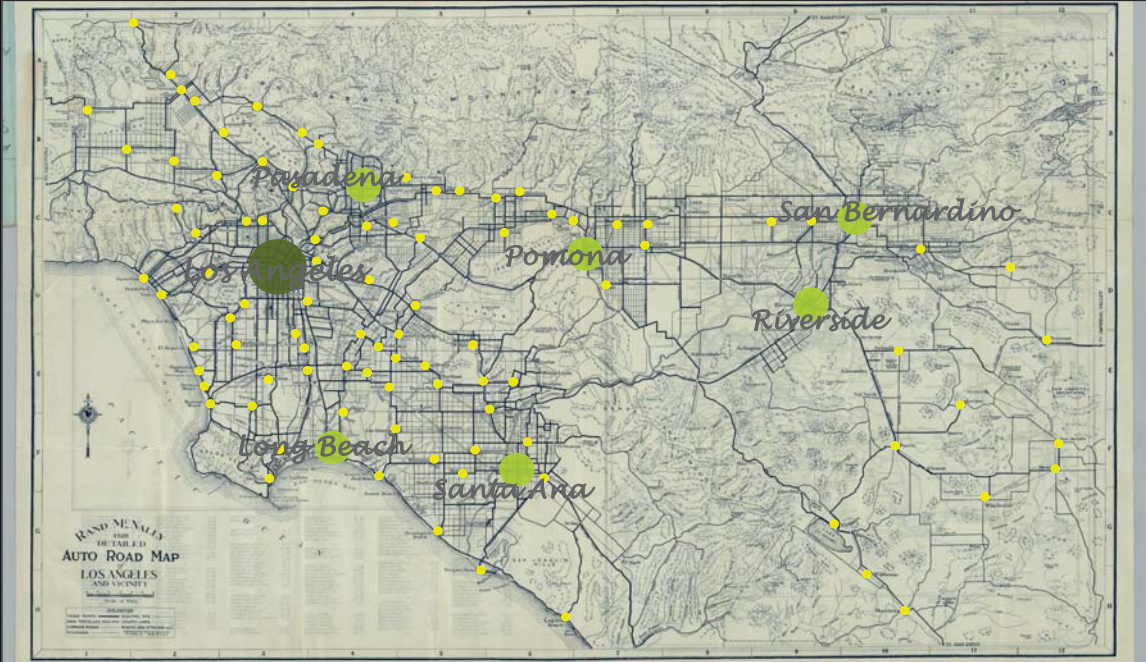


CITY CENTER

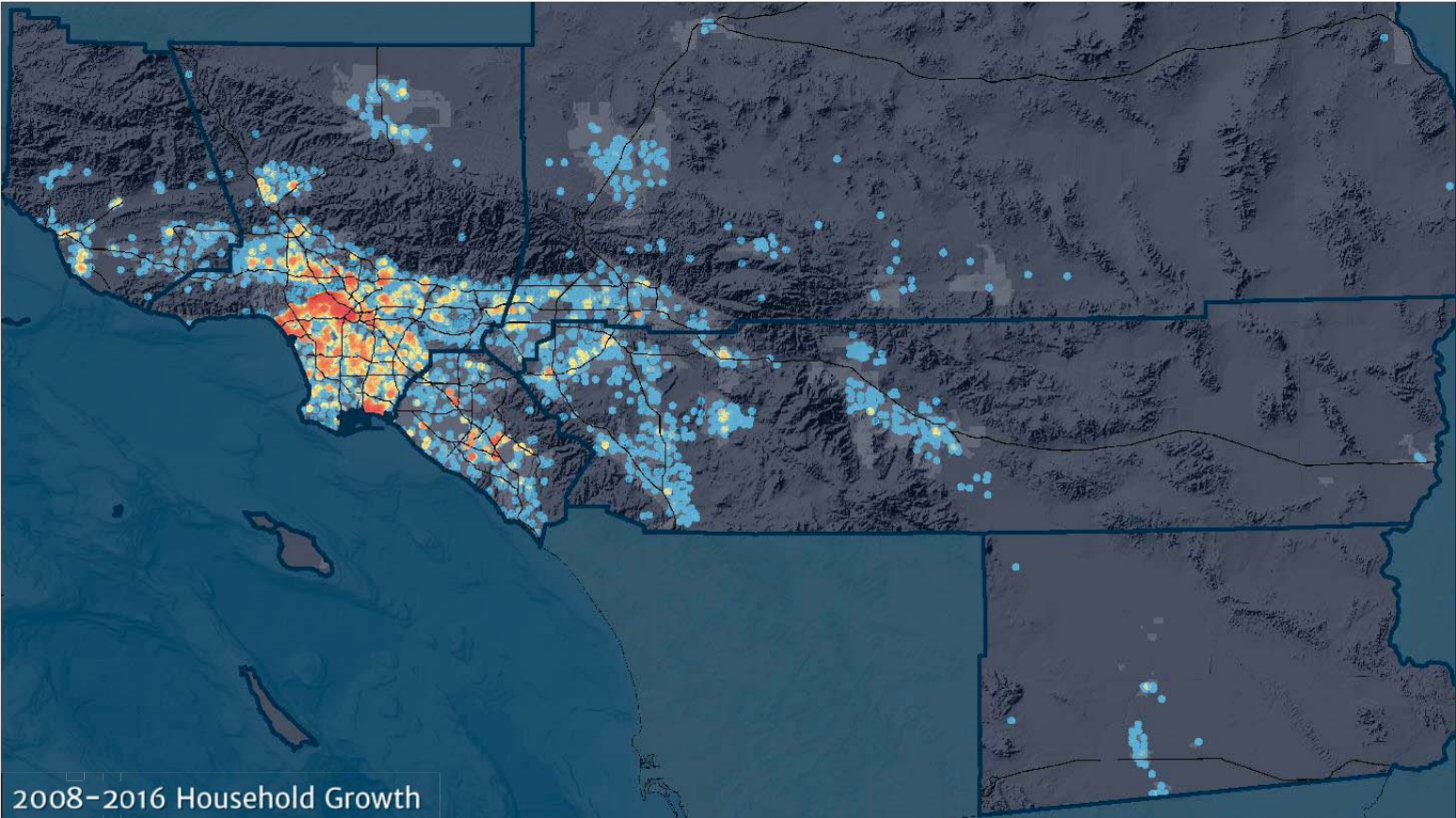


SUBURBAN CENTER

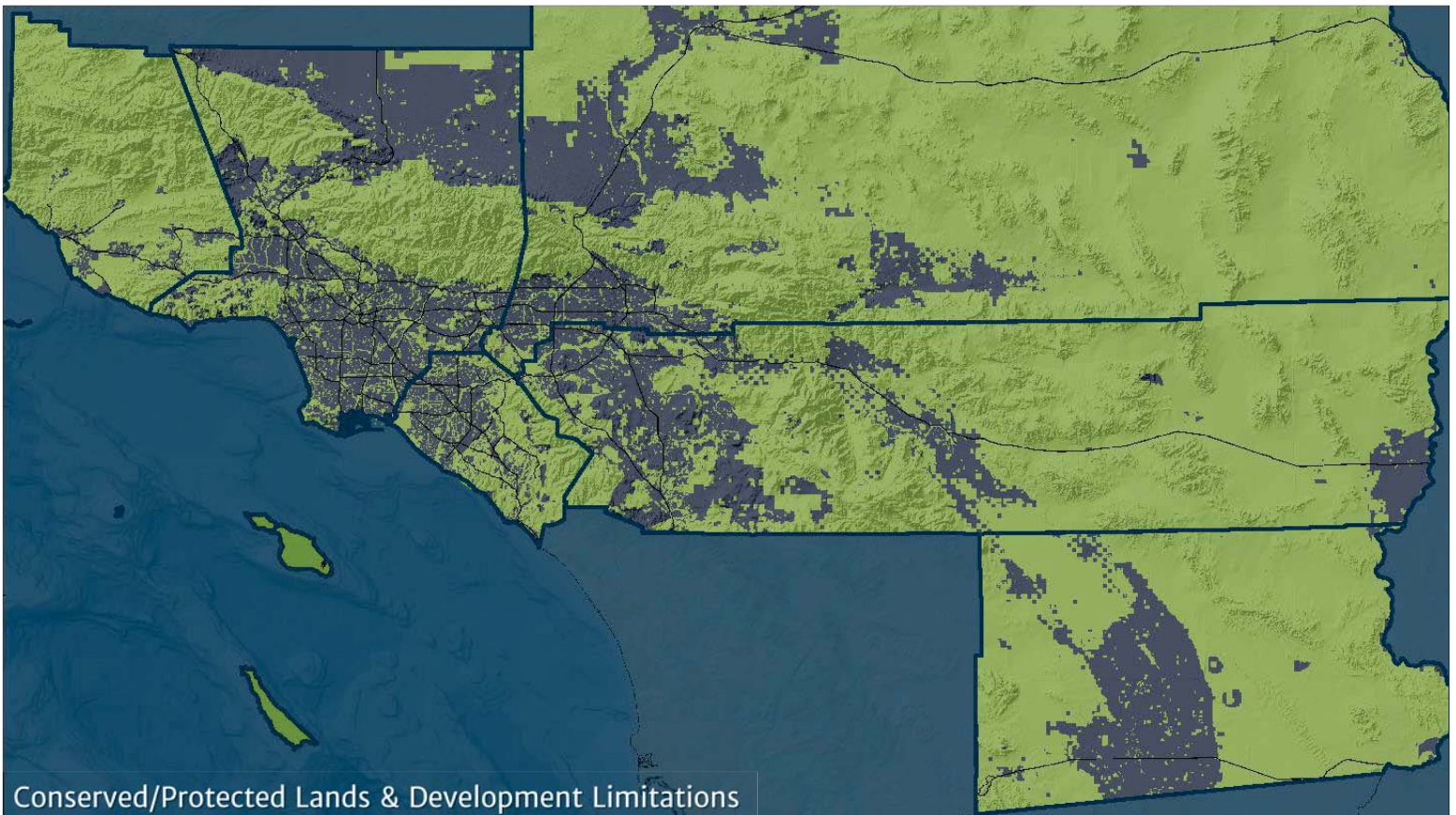
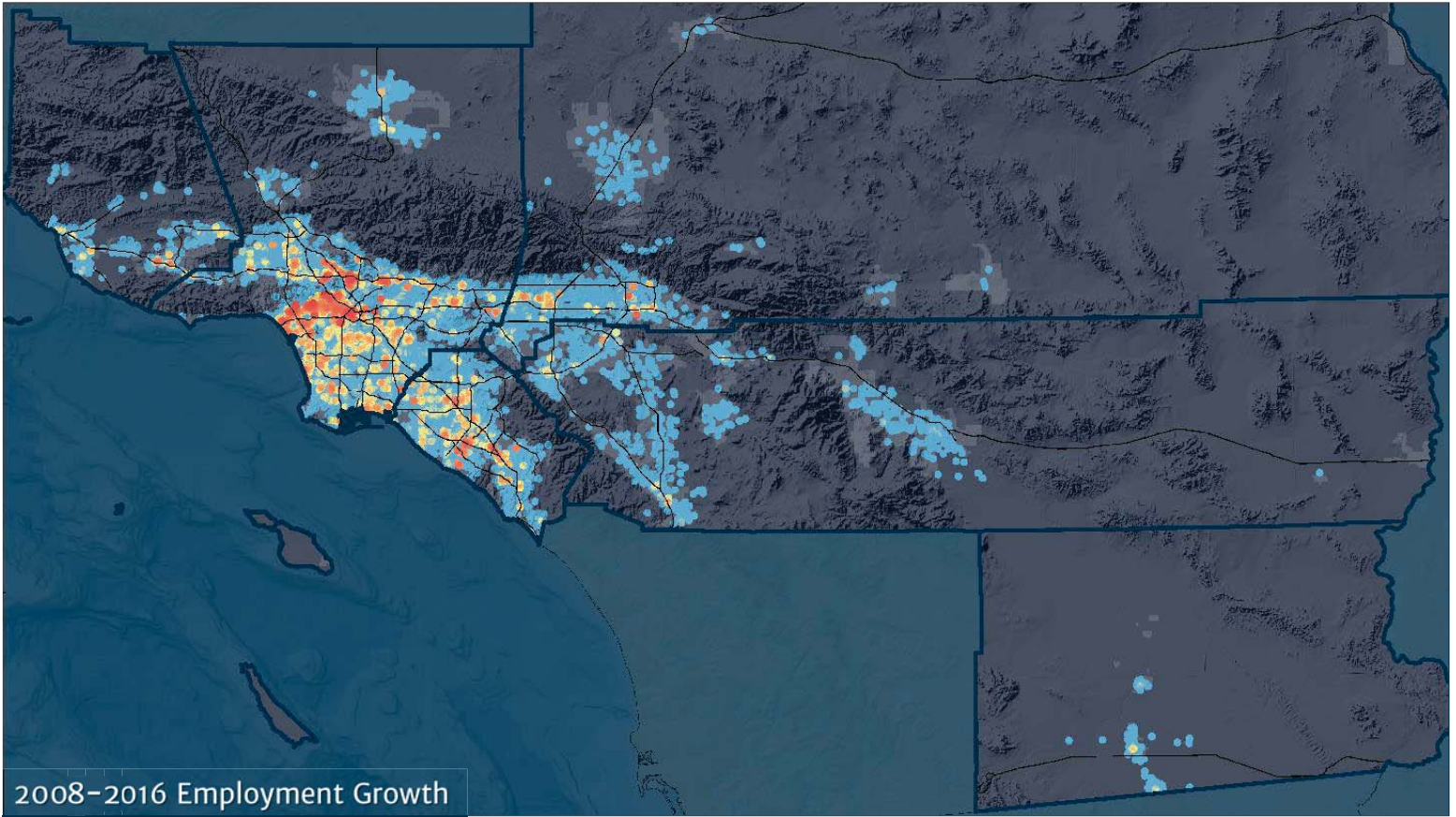
1926 Regional Centers & Mobility

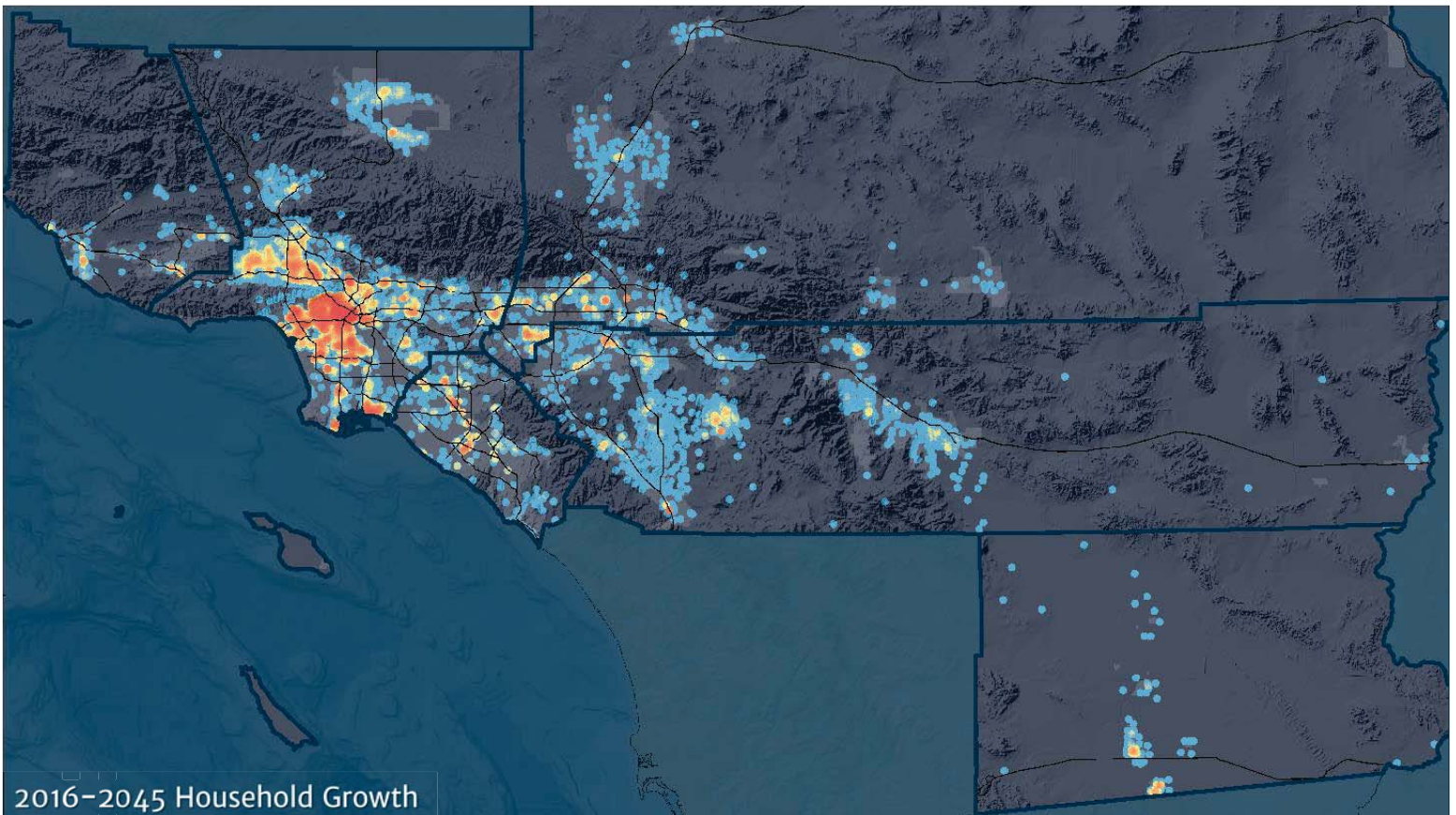
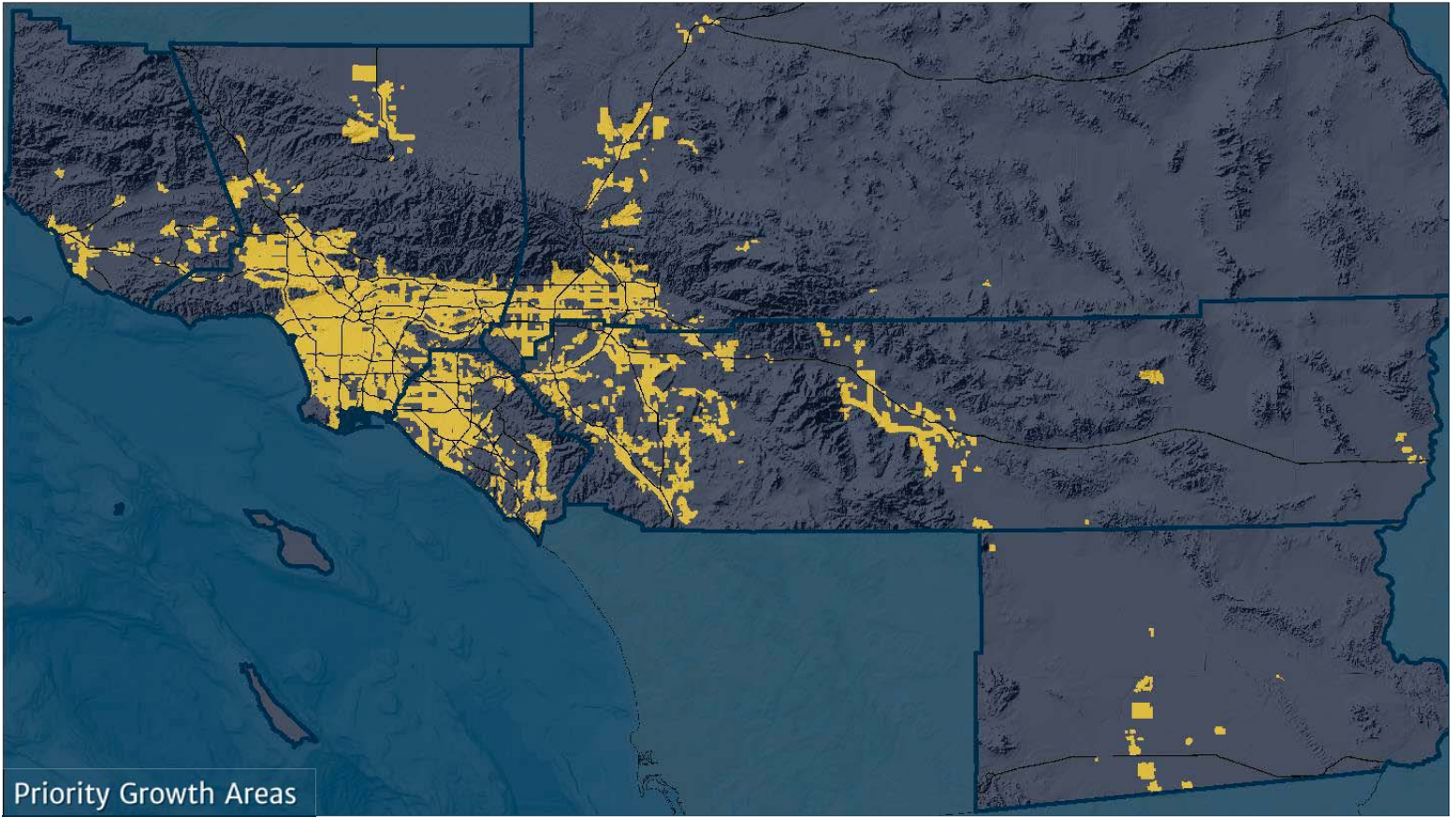


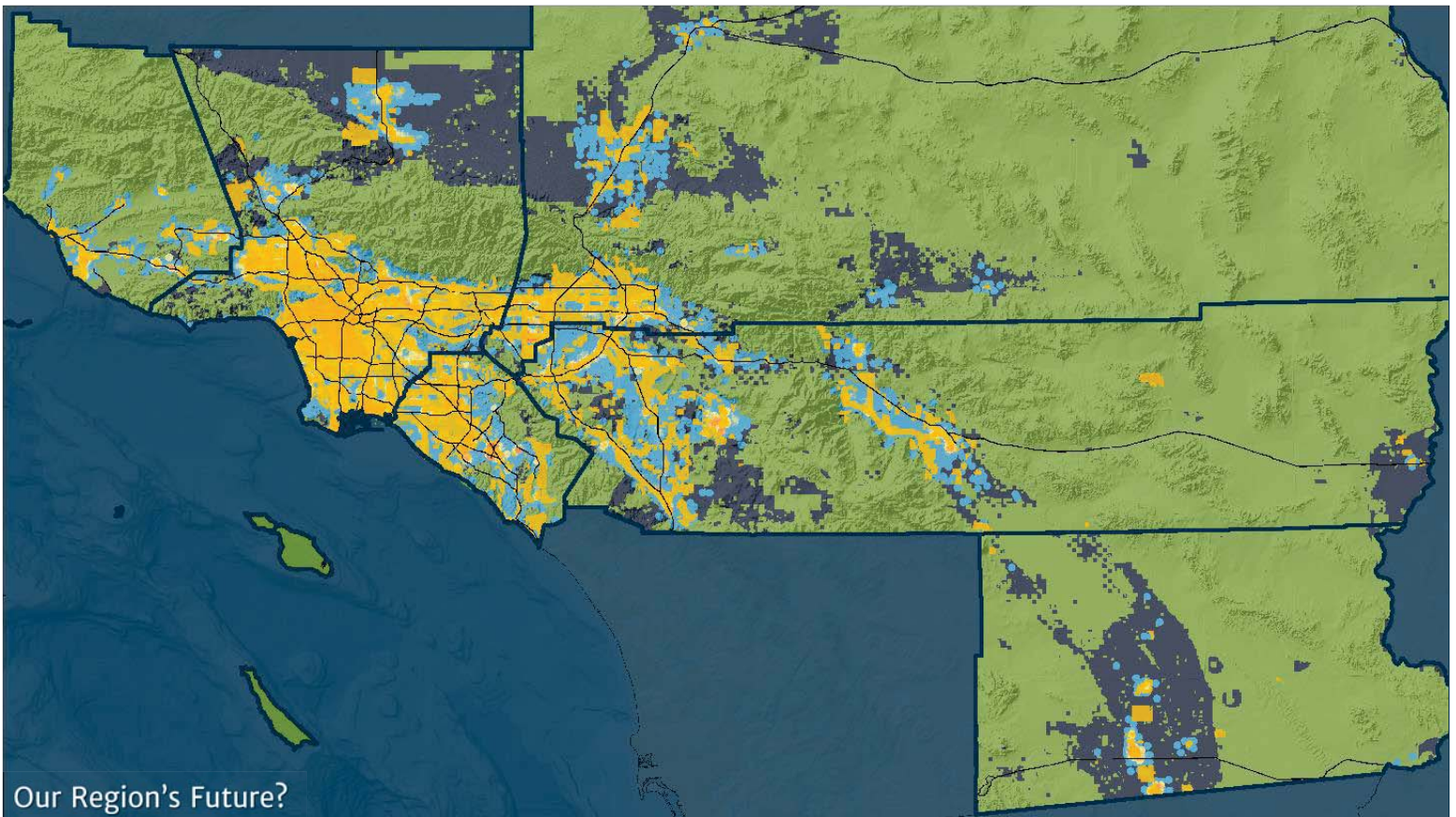
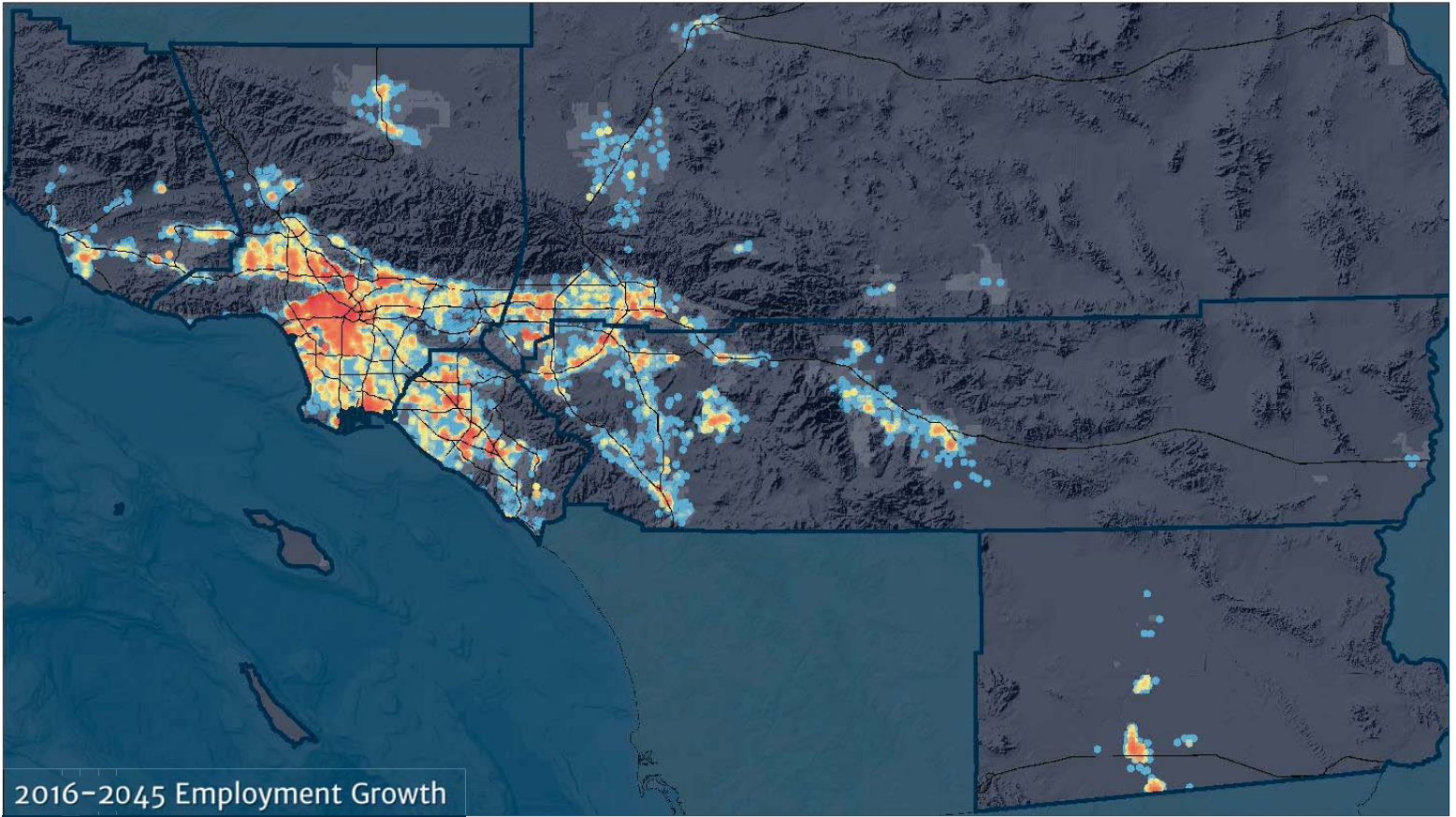
SOURCE: <https://www.davidrumsey.com>

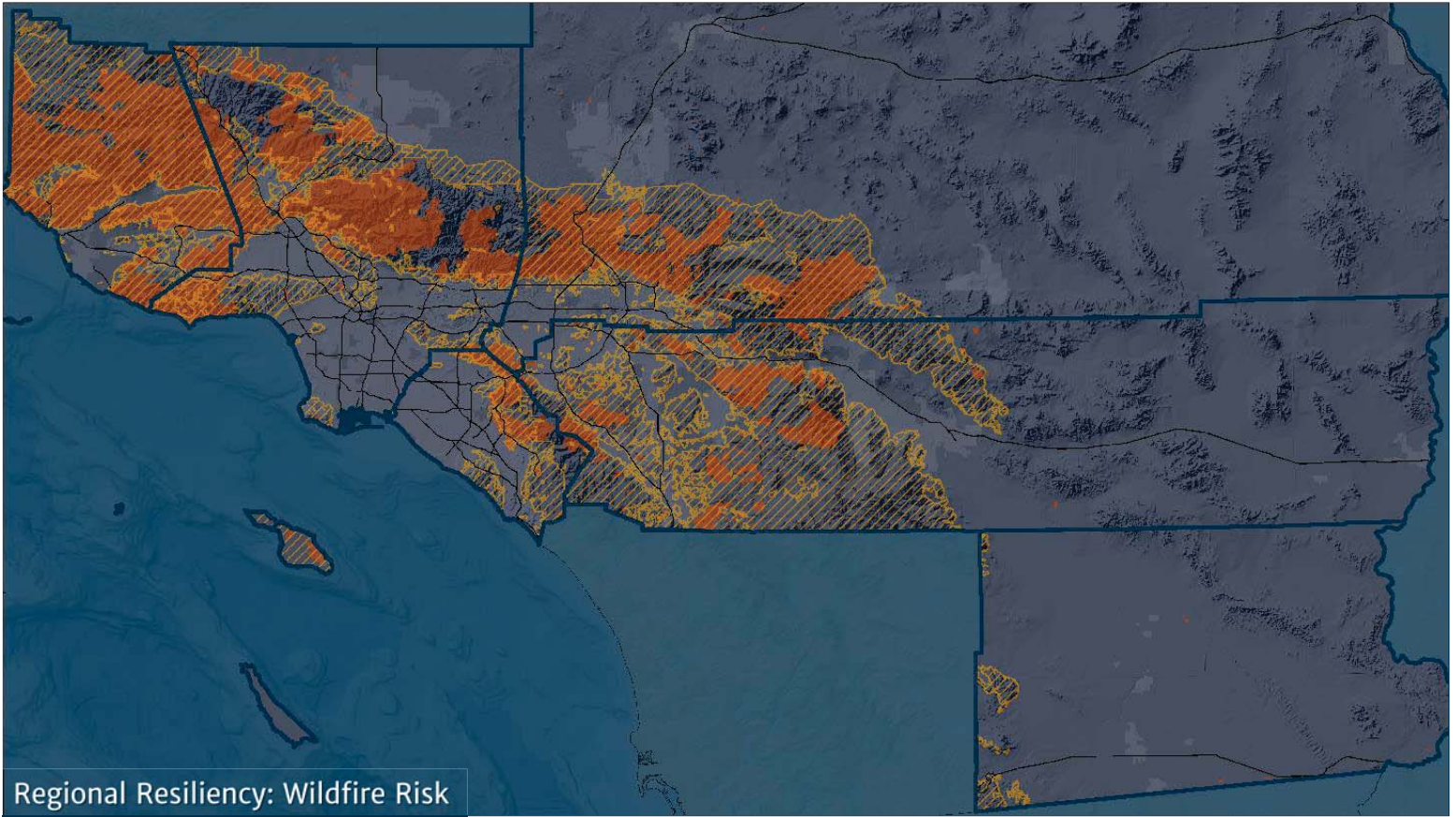


2008-2016 Household Growth









**WE'RE
PLANNING
FOR 2045**





“Cities have the capability of providing something for everybody, only because, and only when, they are created by everybody.”

-Jane Jacobs

Kome Ajise, Director of Planning

Ajise@scag.ca.gov

www.scag.ca.gov

