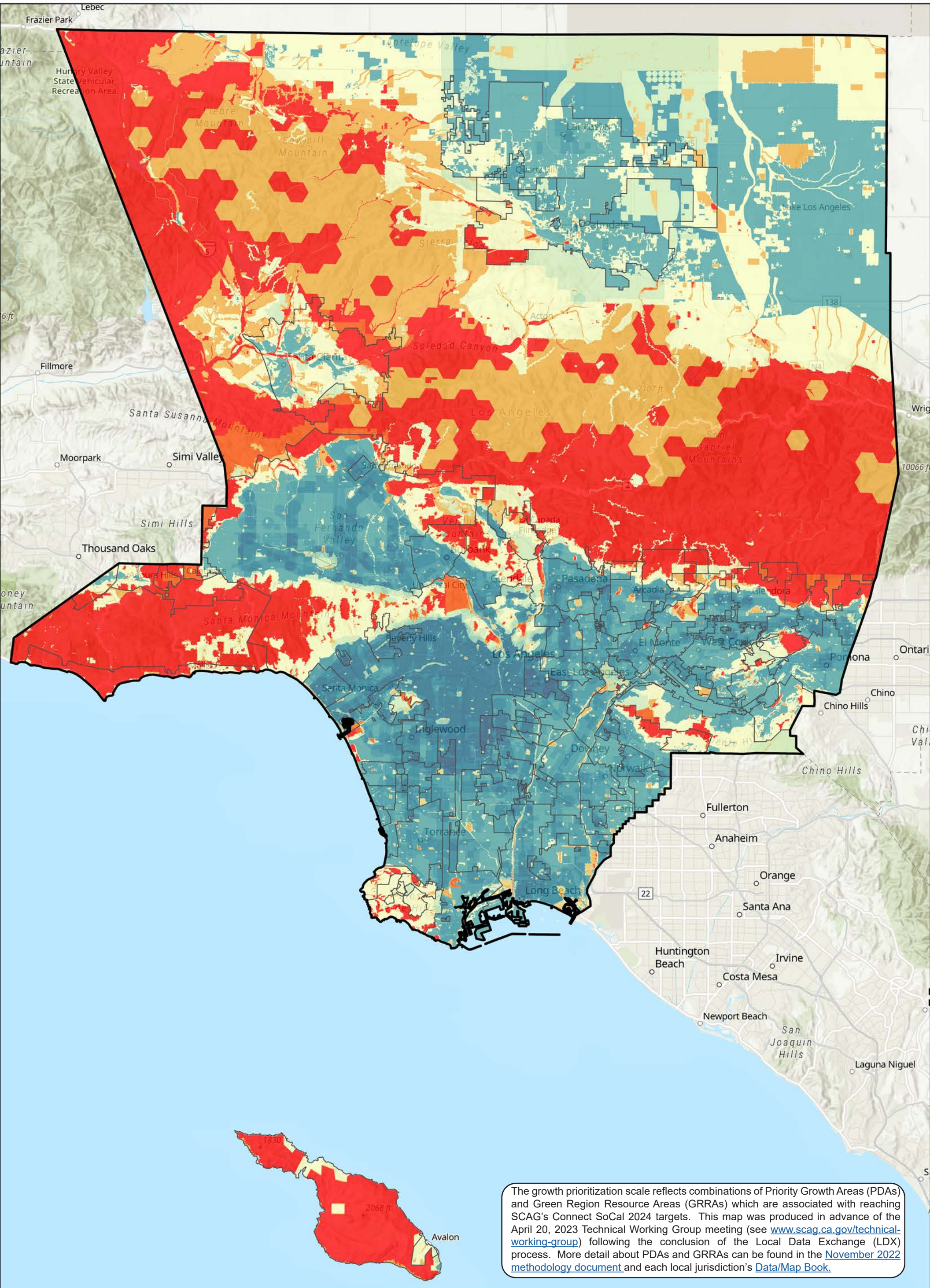


Los Angeles County



The growth prioritization scale reflects combinations of Priority Growth Areas (PDAs) and Green Region Resource Areas (GRRAs) which are associated with reaching SCAG's Connect SoCal 2024 targets. This map was produced in advance of the April 20, 2023 Technical Working Group meeting (see www.scag.ca.gov/technical-working-group) following the conclusion of the Local Data Exchange (LDX) process. More detail about PDAs and GRRAs can be found in the [November 2022 methodology document](#) and each local jurisdiction's [Data/Map Book](#).

Growth Prioritization Scale

