



SOUTHERN CALIFORNIA  
ASSOCIATION OF GOVERNMENTS  
900 Wilshire Blvd., Ste. 1700  
Los Angeles, CA 90017  
T: (213) 236-1800  
www.scag.ca.gov

REGIONAL COUNCIL OFFICERS

President  
**Jan C. Harnik, Riverside County  
Transportation Commission**

First Vice President  
**Carmen Ramirez, County of Ventura**

Second Vice President  
**Art Brown, Buena Park**

Immediate Past President  
**Clint Lorimore, Eastvale**

COMMITTEE CHAIRS

Executive/Administration  
**Jan C. Harnik, Riverside County  
Transportation Commission**

Community, Economic &  
Human Development  
**Frank Yokoyama, Cerritos**

Energy & Environment  
**Deborah Robertson, Rialto**

Transportation  
**Ray Marquez, Chino Hills**

## MEETING OF THE

# TECHNICAL WORKING GROUP

*Thursday, July 21, 2022*  
**10:00 a.m. – 12:00 p.m.**

### JOIN ZOOM MEETING

[HTTPS://SCAG.ZOOM.US/J/142774637](https://scag.zoom.us/j/142774637)

OR

### DIAL BY YOUR LOCATION

**+1 669 900 6833 US TOLL**

**+1 346 248 7799 US TOLL**

**MEETING ID: 142 774 637**

If members of the public wish to review the attachments or have any questions on any of the agenda items, please contact Kevin Kane at (213) 236-1828 or [kane@scag.ca.gov](mailto:kane@scag.ca.gov). Agendas for the Technical Working Group are also available at <https://scag.ca.gov/technical-working-group>

SCAG, in accordance with the Americans with Disabilities Act (ADA), will accommodate persons who require a modification of accommodation in order to participate in this meeting. SCAG is also committed to helping people with limited proficiency in the English language access the agency's essential public information and services. You can request such assistance by calling (213) 630-1402. We request at least 72 hours (three days) notice to provide reasonable accommodations and will make every effort to arrange for assistance as soon as possible.

## Agenda

1. Connect SoCal 2024 Local Data Exchange (LDX) Status Update  
*Tom Vo*  
15 minutes  
[Packet Page 5](#)
2. LDX Editor Module Demo  
*Jonah Pellecchia*  
25 minutes
3. Preliminary Growth Forecast Methodology – Discussion and Next Steps  
*Kevin Kane*  
25 minutes  
[Packet Page 8](#)
4. Green Region Resources Areas (GRRA) Methodology for LDX  
*Kim Clark*  
15 minutes  
[Packet Page 15](#)
5. RHNA Reform  
*Ma'Ayn Johnson*  
30 minutes  
[Packet Page 25](#)

## MAY 19, 2022: MEMBERSHIP ATTENDANCE

### LAND USE AUTHORITIES

Aube, Nicolle	Senior Analyst	City of Huntington Beach
Chantarangsu, David	Development Services Director	City of Murrieta
Equina, Justin	Associate Planner	City of Irvine
Gable, Emily	City Planner	City of Los Angeles
Gackstetter, Ryan	Senior Planner	City of Chino Hills
Guiam, Charles	Planner	City of Anaheim
Darnell, Doug	Senior Planner	City of Menifee
Shimoto-Lohr, Gail	Regional Planning Consultant	City of Mission Viejo
Taylor, Matthew	Senior Planner	City of Riverside
Wikstrom, Alexander	Transportation Planning Associate II	City of Los Angeles
Wong, Jimmy	Associate Planner	City of Santa Fe Springs

### REGIONAL PARTNERS

Brooks, Caitlin	Program Manager	VCTC
Huddleston, Lori	Transportation Planning Manager	LA Metro
Lee, Josh	Chief of Planning	SBCTA
Logasa, Brianne	Management Analyst	SGVCOG
Masters, Martha	Senior Management Analyst	RCTC
McFall, Valarie	Deputy Chief Executive Officer	TCA
Primmer, Marnie	Executive Director	OCCOG
Whiteaker, Warren	Principal Transportation Analyst	OCTA

### REGULATORY & COORDINATING AGENCIES

Brock, Caleb	Senior Transportation Planner	Caltrans
Tuerpe, Michael	Project Manager	San Bernardino LAFCO

### FIELD EXPERTS

Diep, Deborah	Director	CDR/CSUF
Rodnyansky, Seva	Assistant Professor	Occidental College

### ALTERNATES, SELF-IDENTIFIED NON-MEMBERS & PUBLIC ATTENDEES

Brekke, Kendall	--	--
Koblasz, Ginger	--	SBCTA
Shelley, Scott	Senior Environmental Planner	Caltrans
Gabriel Miranda, Jude	Transportation Planner	Caltrans
Luna, Kimberly	--	--
Briski, Ari	City Planner	City of Los Angeles

# SCAG TECHNICAL WORKING GROUP MEETING SUMMARY

May 19, 2022

10:00 a.m. – 12:00 p.m.

## 1. PRELIMINARY GROWTH ALLOCATION METHODOLOGY

Kevin Kane presented on the steps towards a Forecasted Regional Development Pattern, the preliminary small area (jurisdiction- and TAZ-level) growth forecast methodology, an overview of the Local Data Exchange and proposed review process, and how this process will be integrated into Connect SoCal 2024. Seva Rodnyansky (Occidental College), Josh Lee (SBCTA/SBCOG), Gail Shiimoto-Lohr (City of Mission Viejo), and Deborah Diep (CDR/CSUF) participated in discussion.

## 2. LOCAL DATA EXCHANGE (LDX) SURVEY

Lyle Janicek presented on the LDX Survey, providing quick overview on the principles and objectives of the survey and the timeline. Warren Whiteaker (OCTA) provided comment.

## 3. UPDATE ON DRAFT CONNECT SOCIAL 2024 GOALS AND PERFORMANCE MEASURES

Sarah Dominguez and Michael Gainor presented on the draft vision, goals, and performance measures for Connect SoCal 2024 to share out updates on feedback pr. Gail Shiimoto-Lohr commented.

## 4. REAP 2.0 DRAFT FRAMEWORK AND OUTREACH PROCESS

Jenna Hornstock presented an overview of the REAP 2021 program, SCAG's draft REAP 2021 Program framework that focuses on three areas (Early Action Initiatives, CTC Partnership Program, and Housing Supportive Infrastructure Program), the program development timeline, and outreach plan. Alexander Wikstrom (LADOT) provided a question for consideration.

## 5. REGIONAL ADVANCED MITIGATION ADVISORY TASK GROUP (RAMP-ATG) AND GREENPRINT UPDATE

Kimberly Clark provided a verbal update on the RAMP framework development, outreach conducted, and feedback received to date, as well as next steps on the formation of a technical advisory committee to ensure Greenprint alignment with the policy framework under guidance from the RAMP-ATG. Marnie Primmer (OCCOG, nonmember) and Gail Shiimoto-Lohr provided questions and comments for discussion.



# Connect SoCal 2024 Local Data Exchange Status Update

Technical Working Group – July 21, 2022

Tom Vo, Program Manager – Local Info Services  
Planning Strategy Department, Planning Division

[WWW.SCAG.CA.GOV](http://WWW.SCAG.CA.GOV)

1

## Local Information Services Team (LIST) Introduction

- Purpose – Coordinate, plan, and develop a system to
  - (1) link SCAG's value-added products (e.g., data, applications, etc.) to help address local information needs,
  - (2) deliver technical assistance, and
  - (3) provide local staff an opportunity to offer feedback on how SCAG can improve our products to facilitate better collaboration, regionally and locally
- LIST is focusing on the **Local Data Exchange (LDX)** process to solicit inputs from local jurisdictions
- Contact us at [list@scag.ca.gov](mailto:list@scag.ca.gov) for any questions/suggestions!



2

# Connect SoCal 2024/LDX Timeline



## COMPLETED

- ✓ Regional & County Forecast
- ✓ Relaunched Working Groups
- ✓ Regional Data Platform (RDP)

## LDX MILESTONES

- ✓ Soft Launch – February 23
- ✓ Complete Launch – May 4
- Input Deadline – December 4

3

# LDX Schedule

Task Name	Feb 23, 2022	Mar-22	Apr-22	May-22	Jun-22	Jul-22	Aug-22	Sep-22	Oct-22	Nov-22	Dec 2, 2022
RDP/LDX Soft Launch*	Yellow	Yellow	Yellow								
LDX Full Launch				Yellow							
LDX Formal Letter				Yellow							
LDX 1:1 with jurisdictions in OC		Yellow									
LDX 1:1 with jurisdictions in IM, LA, and VN County				Yellow	Yellow	Yellow	Yellow				
LDX 1:1 with jurisdictions in SB and RV County							Yellow	Yellow	Yellow		
Input deadline											Yellow with X
Outreach efforts**	Yellow	Yellow	Yellow	Yellow	Yellow	Yellow	Yellow	Yellow	Yellow	Yellow	Yellow

\*Presented to SCAG Technical Working Group, Policy Committees, and Subregional Technical Advisory Committees  
 \*\*Working with SCAG Regional Affairs Officers, Communication Specialists, and LIST members to perform extensive outreach to local jurisdictions. Proposed schedule as of 7/21/2022

4

## LDX Current Status (as of 7/21/2022)

- Completed LDX 1:1 meetings with **55** jurisdictions
- Upcoming LDX 1:1 meetings with **7** jurisdictions

COUNTY	Number of Jurisdictions	RDP License	RDP-LDX Account	1:1 TA Formal LDX Meeting
Imperial	8	5	0	3
Los Angeles	89	60	7	21
Orange	35	26	8	35
Riverside	29	18	2	1
San Bernardino	25	17	2	0
Ventura	11	9	3	2
<b>TOTAL</b>	<b>197</b>	<b>135</b>	<b>22</b>	<b>62</b>

5



## THANK YOU!

For more information, please visit:



[scag.ca.gov/connect-socal](https://scag.ca.gov/connect-socal)  
[scag.ca.gov/local-data-exchange](https://scag.ca.gov/local-data-exchange)  
[hub.scag.ca.gov](https://hub.scag.ca.gov) (RDP)



Local Info Services Team  
[LIST@scag.ca.gov](mailto:LIST@scag.ca.gov)

6



# Connect SoCal 2024 Preliminary Growth Forecast Methodology

Discussion on Input Evaluation and Next Steps

July 21, 2022

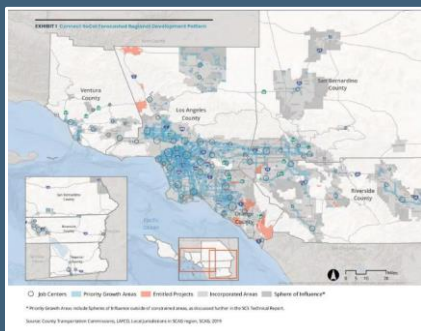
Kevin Kane, PhD  
Program Manager, Demographics  
and Growth Vision

[WWW.SCAG.CA.GOV](http://WWW.SCAG.CA.GOV)

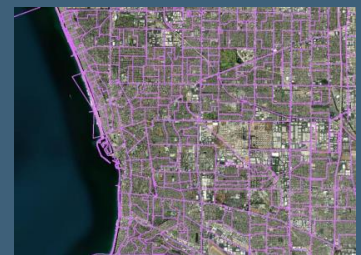
1

## Objective: Forecasted Regional Development Pattern

*“set forth a forecasted development pattern for the region, which, when integrated with the transportation network, and other transportation measures and policies, will reduce the greenhouse gas emissions from automobiles and light trucks to achieve, if there is a feasible way to do so, the greenhouse gas emission reduction targets approved by the state board, and (viii) allow the regional transportation plan to comply with Section 176 of the federal Clean Air Act (42 U.S.C. Sec. 7506).” California Government Code 65080(b)(vii)*



- LDX GETS HERE BY BEING:**
- ✓ Rooted in local planning
  - ✓ Steered by a regional vision
  - ✓ Aligned with state and federal policy



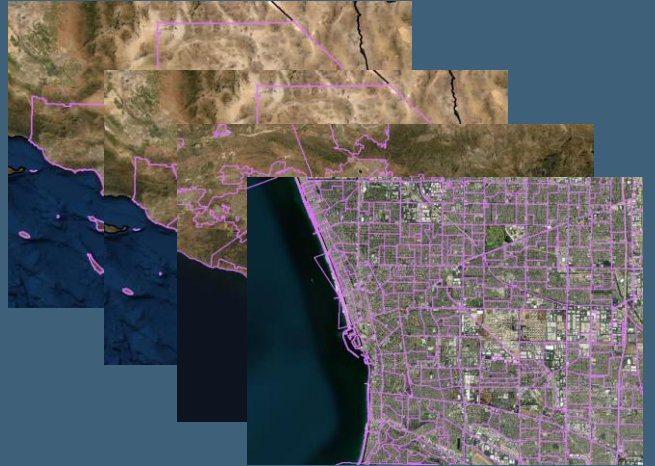
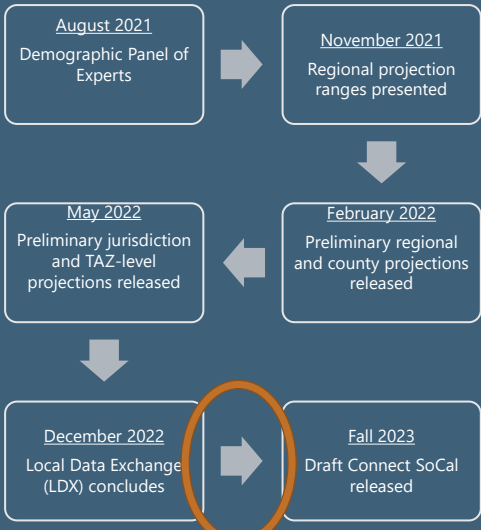
Sample of TAZs in the SCAG region

Connect SoCal 2020 Forecasted Regional Development Pattern

2

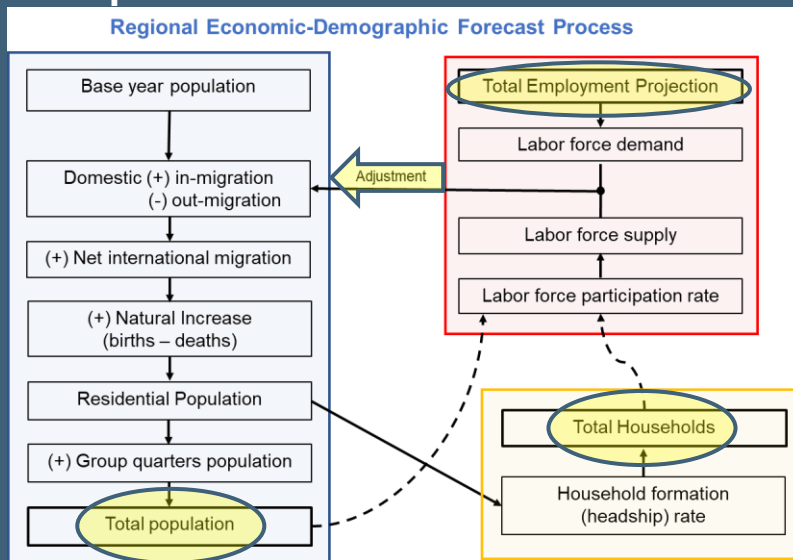


# Timeline



3

# SCAG's Regional Economic-Demographic Forecast Process and Expert Panel Recommendations

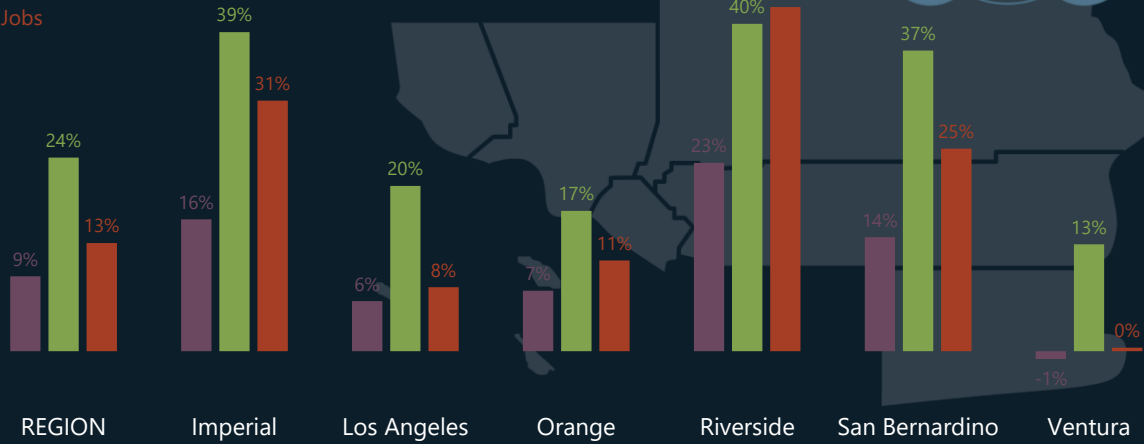


4

# Preliminary County Growth Projections

Percent Change 2019-2050

- Population
- Households
- Jobs

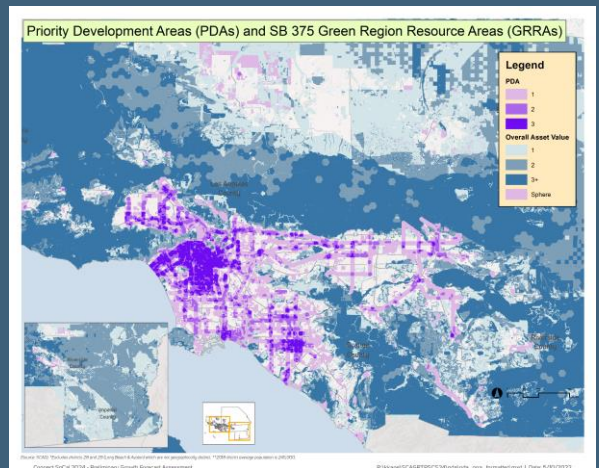


5

## Preliminary small area household forecast methodology

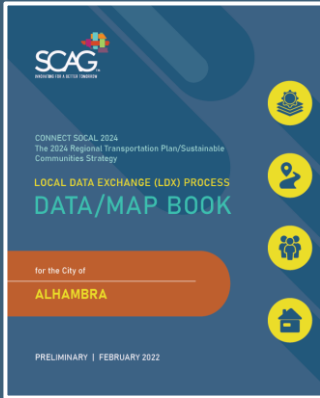
1. Estimate remaining general plan capacity and control to county/regional projection
2. Add RHNA/housing element rezone sites if needed
3. Growth prioritization steps
  - Increase in Priority Development Areas (PDAs)
  - Minimize in Green Region Resource Areas (GRRAs)

Number of Priority Development Areas	4	3	2	1	0	4	3	2	1	0	4	3	2	1	0	4	3	2	1	0
Number of Green Region Resource Areas	0	0	0	0	0	1	1	1	1	1	2	2	2	2	2	3+	3+	3+	3+	3+
Step #	1	2	3	4	5	6	7	8	9	10	11	12	13	14	15	16	17	18	19	20



6

# Forecasted Regional Development Pattern relies on local review & approval to be complete



7

# What local review is needed to improve the Forecasted Regional Development Pattern?

Please use this form to formally indicate that you have completed review of data for which SCAG is seeking update/corrections or optional review during the LDX process. For each layer reviewed, please indicate whether the review was provided through the Regional Data Platform (RDP) or via email to [list@scag.ca.gov](mailto:list@scag.ca.gov).

Category	Layer	Review Type	Review Provided Via:	Notes/Comments – Continue on back if needed
Land Use	General Plan	Update	<input type="checkbox"/> RDP <input type="checkbox"/> Email	
	Zoning	Update		
	Existing Land Use	Update		
	Specific Plan	Update		
	Key Entitlements	Update		
Priority Development	Neighborhood Mobility Areas	Optional		
	Livable corridors	Optional		
	Housing trajectory	Update		
Transportation	Regional bikeways	Optional		
	Regional truck routes	Optional		

Growth/SED	Year	Jurisdiction-level	TAZ-level	Sent by:	Notes/Comments – Continue on back
Total Households	2019	<input type="checkbox"/> Approve <input type="checkbox"/> Revise	<input type="checkbox"/> Approve <input type="checkbox"/> Revise	<input type="checkbox"/> RDP <input type="checkbox"/> Email	
	2035	<input type="checkbox"/> Approve <input type="checkbox"/> Revise	<input type="checkbox"/> Approve <input type="checkbox"/> Revise	<input type="checkbox"/> RDP <input type="checkbox"/> Email	
	2050	<input type="checkbox"/> Approve <input type="checkbox"/> Revise	<input type="checkbox"/> Approve <input type="checkbox"/> Revise	<input type="checkbox"/> RDP <input type="checkbox"/> Email	
Total Employment	2019	<input type="checkbox"/> Approve <input type="checkbox"/> Revise	<input type="checkbox"/> Approve <input type="checkbox"/> Revise	<input type="checkbox"/> RDP <input type="checkbox"/> Email	
	2035	<input type="checkbox"/> Approve <input type="checkbox"/> Revise	<input type="checkbox"/> Approve <input type="checkbox"/> Revise	<input type="checkbox"/> RDP <input type="checkbox"/> Email	
	2050	<input type="checkbox"/> Approve <input type="checkbox"/> Revise	<input type="checkbox"/> Approve <input type="checkbox"/> Revise	<input type="checkbox"/> RDP <input type="checkbox"/> Email	

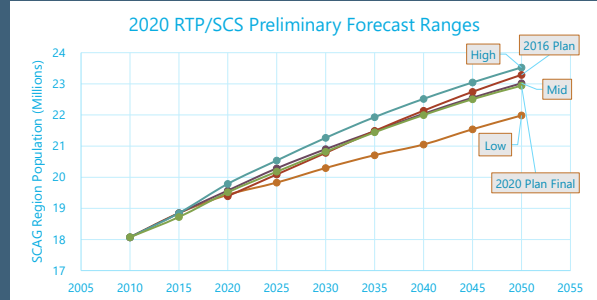
If growth/SED were revised, please select a reason and describe:

Category	Reason	Description – Continue on back if needed
Correction	<input type="checkbox"/> General Plan capacity (current or expected future)	
Correction	<input type="checkbox"/> Entitlements	
Local Policy	<input type="checkbox"/> Zoning/plan changes resulting from the 6 <sup>th</sup> cycle housing element update	
Local Policy	<input type="checkbox"/> Growth will be focused in other priority development areas	
Local Policy	<input type="checkbox"/> Higher development potential in green region/resource areas	

8

# Evaluating Input – Demographic Panel of Experts

- Prior RTP/SCS
  - Robustness check vs. Panel of Expert recommendations
  - Technically sound regional forecast if:
    - Within high-low range
    - Reasonable P:H and P:E ratios
- Connect SoCal 2024
  - Staff plans to assess at county level after LDX



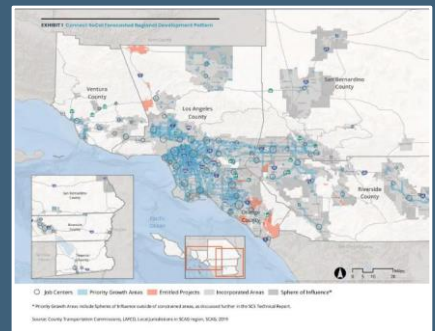
Assessing locally-reviewed regional population against preliminary forecast

9

# Evaluating Input – Connect SoCal 2024 Targets

*“set forth a forecasted development pattern for the region, which, when integrated with the transportation network, and other transportation measures and policies, will reduce the greenhouse gas emissions from automobiles and light trucks to achieve, if there is a feasible way to do so, the greenhouse gas emission reduction targets approved by the state board, and (viii) allow the regional transportation plan to comply with Section 176 of the federal Clean Air Act (42 U.S.C. Sec. 7506).” California Government Code 65080(b)(vii)*

- LDX Objective: hit targets with no further modification
  - Use one-on-one meetings to discuss
  - No separate scenario process afterward\*
- Complete run of travel demand model will not be available
  - Transportation data + other plan strategies still in development
- Target: February 2023 TWG meeting
  - Comparison of preliminary and locally-reviewed projections



Connect SoCal 2020 Forecasted Regional Development Pattern

\*Required PEIR alternatives analysis will be conducted separately

10

# An Option for Reviewing Input Received by SCAG

		COUNTY A Percentage of Household Growth:			
STEP #	Number of PDAs	Number of GRRAs	Final 2020 Plan	Preliminary 2024 Plan	Locally-Reviewed 2024 Plan
1	4	0	10%	11%	?
2	3	0	9%	10%	?
3	2	0	8%	9%	?
4	1	0	7%	8%	?
5	0	0	6%	7%	?
6	4	1	8%	9%	?
7	3	1	7%	8%	?
8	2	1	6%	7%	?
9	1	1	5%	6%	?
10	0	1	4%	5%	?
11	4	2	6%	6%	?
12	3	2	5%	5%	?
13	2	2	4%	4%	?
14	1	2	3%	3%	?
15	0	2	2%	2%	?
16	4	3+	4%	0%	?
17	3	3+	3%	0%	?
18	2	3+	2%	0%	?
19	1	3+	1%	0%	?
20	0	3+	0%	0%	?

- Compare 20 steps by county
  - Same or better → no change
  - Worse → Identify jurisdictions:
    - with largest changes, or
    - the largest overall
  - Review differences

STEPS can be combined:

	Percentage of Household Growth
1 or more PDA	60%
2 or more PDAs	40%
0 GRRAs	70%
0-2 GRRAs	97%
0 GRRAs and 1 or more PDAs	50%

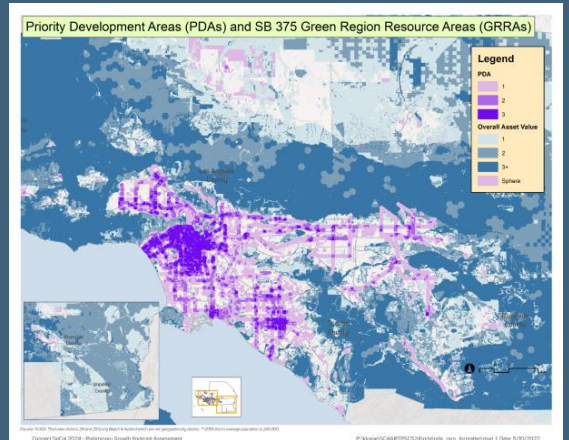
These hypothetical percentages were developed for discussion purposes only.

11

# Discussion Questions – SCAG Review Process

1. What is the definition of “same or better?”
2. Should the 20 steps be collapsed or combined?
3. What if a PDA boundary changes too?
4. What about jobs-housing balance?
5. Should SCAG investigate additional ways to model marginal GHG impacts (SB 743 tools? SPM?)
6. Other?

Number of Priority Development Areas	4	3	2	1	0	4	3	2	1	0	4	3	2	1	0	4	3	2	1	0
Number of Green Region Resource Areas	0	0	0	0	0	1	1	1	1	1	2	2	2	2	2	3+	3+	3+	3+	3+
Step #	1	2	3	4	5	6	7	8	9	10	11	12	13	14	15	16	17	18	19	20



12



# THANK YOU!

For more information, please visit:

<https://scag.ca.gov/local-data-exchange>

<https://hub.scag.ca.gov>

[list@scag.ca.gov](mailto:list@scag.ca.gov)

Kevin Kane, PhD  
Program Manager, Demographics and Growth Vision  
[kane@scag.ca.gov](mailto:kane@scag.ca.gov)



# Green Region Resource Areas Methodology for SCAG's Local Data Exchange (LDX)

July 21, 2022

[WWW.SCAG.CA.GOV](http://WWW.SCAG.CA.GOV)

1



## COMPLETED

- ✓ Regional & County Forecast
- ✓ Relunched Working Groups
- ✓ Regional Data Platform Launch

## LOCAL DATA EXCHANGE (LDX)

- Soft Launch – February 23<sup>rd</sup>
- Complete Launch – May 23<sup>rd</sup>
- Input Deadline – December 2<sup>nd</sup>

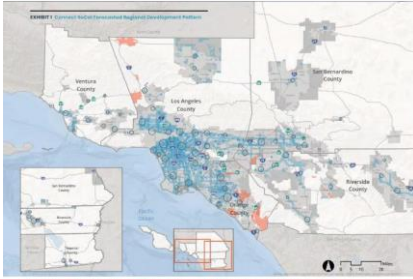
# CONNECT SOCIAL 2024: DEVELOPMENT UPDATE

2

2

# Objective: Forecasted Regional Development Pattern

“set forth a forecasted development pattern for the region, which, when integrated with the transportation network, and other transportation measures and policies, will reduce the greenhouse gas emissions from automobiles and light trucks to achieve, if there is a feasible way to do so, the greenhouse gas emission reduction targets approved by the state board, and (viii) allow the regional transportation plan to comply with Section 176 of the federal Clean Air Act (42 U.S.C. Sec. 7506).” California Government Code 65080(b)(vii)



Connect SoCal 2020  
Forecasted Regional Development Pattern

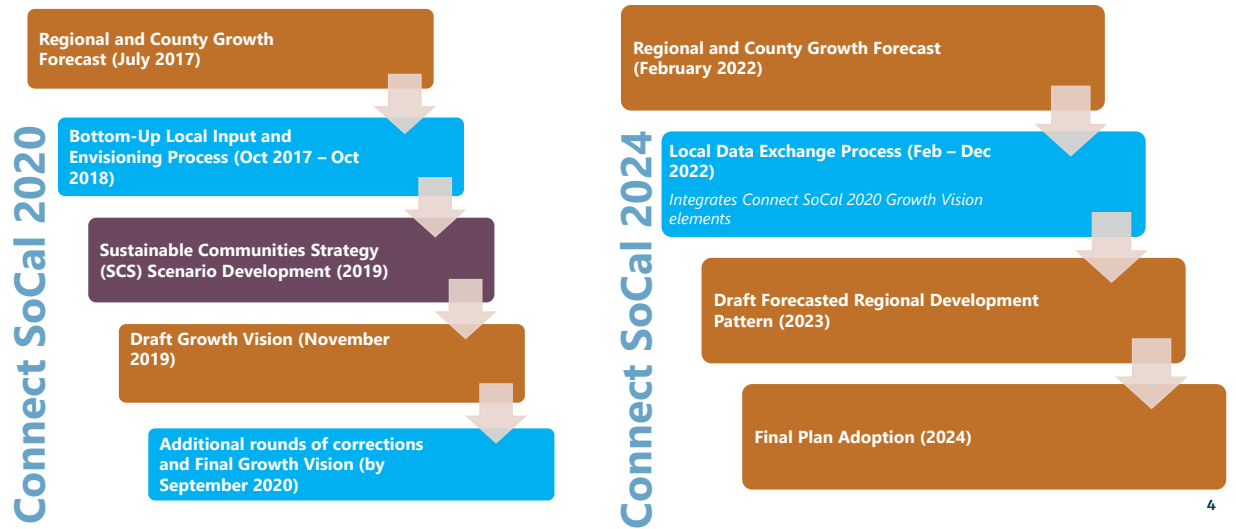
### LDX GETS HERE BY BEING:

- ✓ Rooted in local planning
- ✓ Steered by a regional vision
- ✓ Aligned with state and federal policy



Sample of TAZs in the SCAG region

# Objective: Forecasted Regional Development Pattern





## SB 375 Resource Areas (Section 65080.01)

- 1) All publicly owned **parks and open space**
- 2) **Open space or habitat areas protected** by natural community conservation plans, habitat conservation plans, and other adopted natural resource protection plans
- 3) **Habitat for species** identified as candidate, fully protected, sensitive, or species of special status by local, state, or federal agencies or protected by the federal Endangered Species Act of 1973, the California Endangered Species Act, or the Native Plant Protection Act
- 4) **Lands subject to conservation or agricultural easements** for conservation or agricultural purposes by local governments, special districts, or nonprofit 501(c)(3) organizations, areas of the state designated by the State Mining and Geology Board as areas of statewide or regional significance pursuant to Section 2790 of the Public Resources Code, and lands under Williamson Act contracts
- 5) Areas designated for **open-space or agricultural uses in adopted open-space elements or agricultural elements** of the local general plan or by local ordinance
- 6) **Areas containing biological resources** as described in Appendix G of the CEQA Guidelines that may be significantly affected by the sustainable communities strategy or the alternative planning strategy
- 7) An **area subject to flooding** where a development project would not, at the time of development in the judgment of the agency, meet the requirements of the National Flood Insurance Program or where the area is subject to more protective provisions of state law or local ordinance.

5

## Connect SoCal 2024: Green Region Resource Areas

- Derived from SB 375 + Connect SoCal 2020 strategies
- Highlight areas where future growth is not encouraged due to sensitivity to natural hazards, biological sensitivities, and resilience to a changing climate
- Layers are consistent with Connect SoCal 2020 Plan but have been updated to reflect the latest & greatest data
- Green Region Resources Areas (GRRAs) consist of 10 topics, spanning three categories:
  - *Resilience*
  - *Habitat*
  - *Administrative/Working Lands*
- Layers have been combined for the purposes of the Preliminary Growth Forecast
- In the LDX materials, GRRAs maps consist of 10 topic maps + 4 multi-benefit asset maps

6

6

## SCAG Data/Map Book and RDP LDX Web Contents

CATEGORY	LAYER NAME	REVIEW TYPE	CATEGORY	LAYER NAME	REVIEW TYPE
Land Use	General Plan	Update/Corrections	Green Region Resource Areas (SB 375)	Resilience (Flood areas, coastal inundation, wildfire risk)	Reference Only
	Zoning	Update/Corrections		Open Space/Habitat (Open space and parks, endangered species and plants, sensitive habitat areas, natural community and habitat conservation plans)	Reference Only
	Existing Land Use	Update/Corrections			
	Specific Plan Land Use	Update/Corrections			
	Key Entitlements	Update/Corrections			
Priority Development	Neighborhood Mobility Areas	Optional	Administrative/Working Lands (Tribal nations, military installations, farmlands)	Reference Only	
	Livable Corridors	Optional			
	Job Centers	Optional	Geographical Boundaries	Reference Only	
	Housing Trajectory	Update/Corrections and site inventory upload			
Transportation	High Quality Transit Areas	Reference Only	Growth (available May 2022)	Update/Corrections	
	Transit Priority Areas	Reference Only			
	Regional Bikeways	Optional	Jurisdiction-level projections of households and employment (2019, 2035, 2050)	Update/Corrections	
	Regional Truck Routes	Optional			

Digital versions of these data layers are available to local jurisdictions through their RDP LDX login.

## Connect SoCal 2024: Green Region Resource Areas Datasets

GRRR Category	GRRR Topic	Underlying Datasets
Resilience	Flood Areas	FEMA Effective: 100-Year Floodplains, 2017, FEMA
	Coastal Inundation (Sea Level Rise)	Coastal Storm Modeling System (CoSMoS) for Southern California, v3.0, Phase 2, 2018, USGS
	Wildfire Risk	Fire Hazard Severity Zones Local Responsibility Areas Maps, 2008, CAL FIRE
		Fire Hazard Severity Zones State Responsibility Areas Maps, 2007, CAL FIRE
Habitat / Open Space	Open Space and Parks	Save Our Agricultural Resources (SOAR), 2017, County of Ventura
		California Conservation Easement Database (CCED), 2021, Multiple sources
		California Protected Areas Database (CPAD), 2021, Multiple sources
	Endangered Species and Plants	California Natural Diversity Database, 2017, CA Department of Fish and Wildlife
		National Wetlands Inventory, 2020, US Fish and Wildlife Services
	Sensitive Habitat Areas	2015 Areas of Conservation Emphasis (ACEIIV2), 2015, CA Department of Fish and Wildlife
		Connect SoCal 2020 Habitat Connectivity Layer, 2020, SCAG; South Coast Missing Linkages (SCML) Wildlife Corridors, 2018, Conservation Biology Institute; and California Essential Habitat Connectivity Project, 2010, CA Department of Fish and Wildlife
Natural Community and Habitat Conservation Plans	Conservation Plan Boundaries, Habitat Conservation Plans (HCPs) and Natural Community Conservation Plans (NCCPs), 2021, CA Department of Fish and Wildlife	
Administrative/ Working Lands	Tribal Nations	American Indian Reservations / Federally Recognized Tribal Entities, 2021, CalOES
	Military Installations	USA Department of Defense Lands, 2018, US Department of Defense
	Farmlands	California Important Farmland, Farmland Mapping & Monitoring Program (FMMP), 2018, CA Department of Conservation

# Connect SoCal 2024: Green Region Resource Areas (GRRRA)

GRRRA Topics (10)

GRRRA Categories

## Resilience

- 100-Year Flood Plains
- Coastal Inundation (Sea Level Rise)
- Wildfire Risk

## Habitat

- Open Space & Parks
- Endangered Species & Plants
- Sensitive Habitat Areas
- Natural Community & Habitat Conservation Plans

## Administrative/ Working Lands

- Tribal Nations
- Military Installations
- Farmlands

# Green Region Resource Areas: Resilience

## Resilience

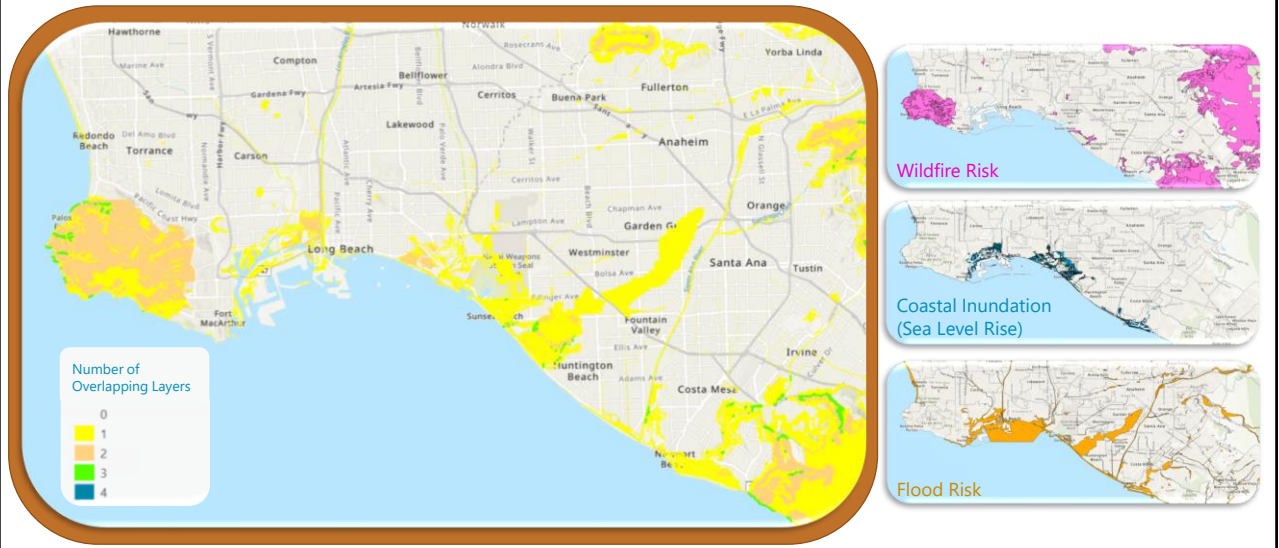
100-Year Flood Plains  
(Flood Risk)

Coastal Inundation  
(Sea Level Rise)

Wildfire Risk



## Resilience Multi-Benefit Asset Map



## Green Region Resource Areas: Habitat/Open Space

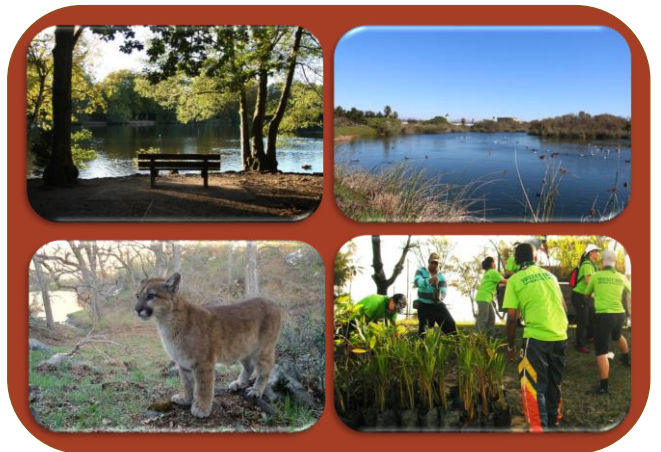
### Habitat / Open Space

Open Space & Parks

Sensitive Habitat Areas

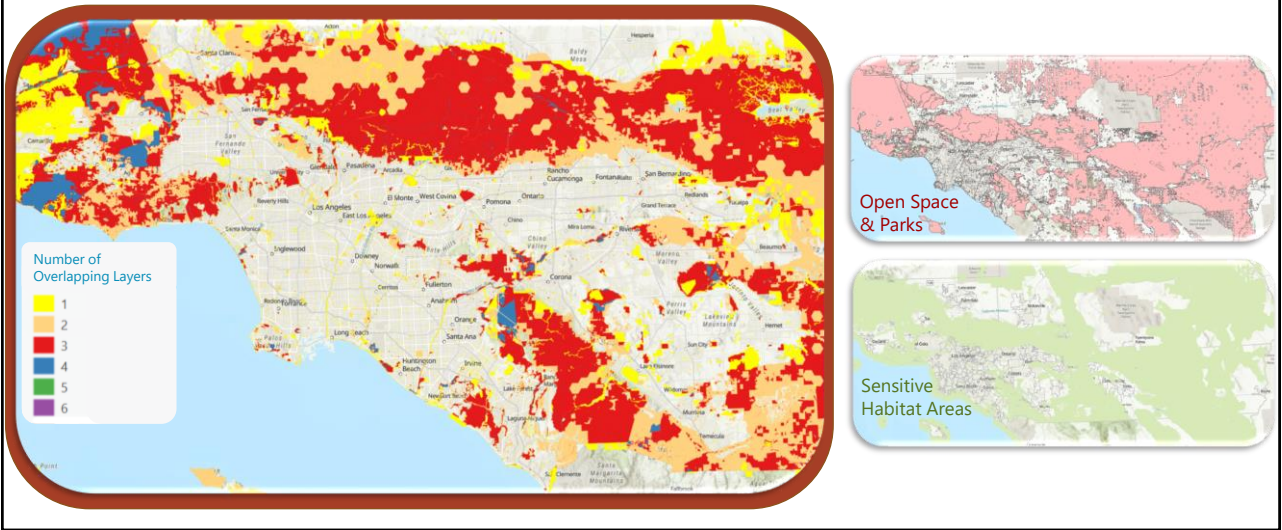
Endangered Species & Plants\*

Natural Community & Habitat Conservation Plans\*



*Asterisk (\*) indicates layers provided for reference in Data/Map Books, but not factored into Preliminary Growth Forecast.*

# Habitat/Open Space Multi-Benefit Asset Map



13

# Green Region Resource Areas: Administrative/Working Lands

## Administrative/ Working Lands

Tribal Nations

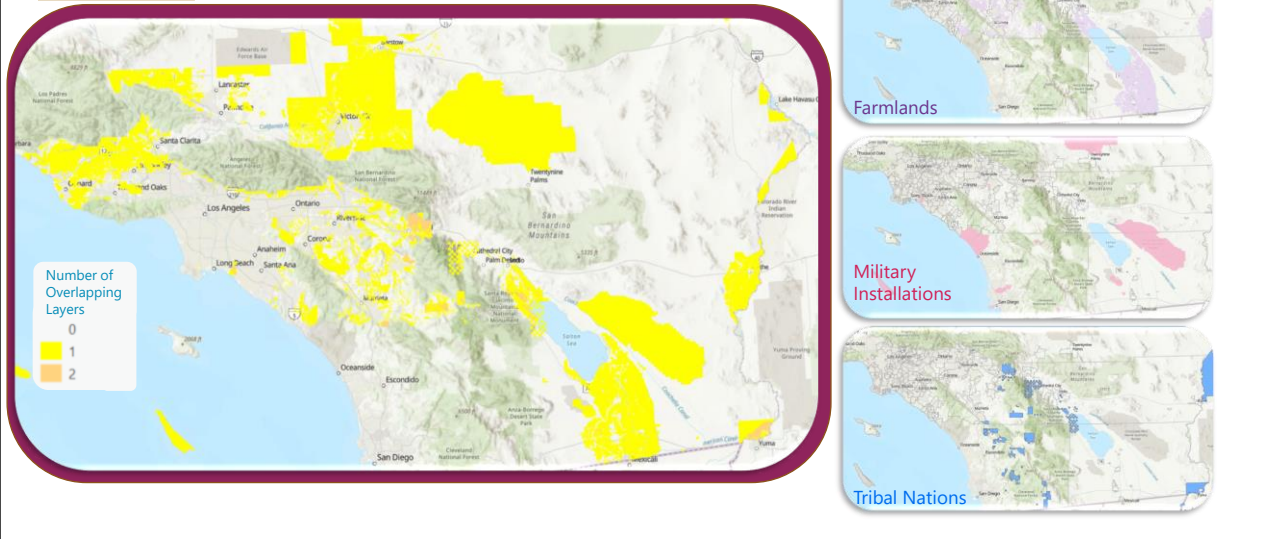
Military Installations

Farmlands



14

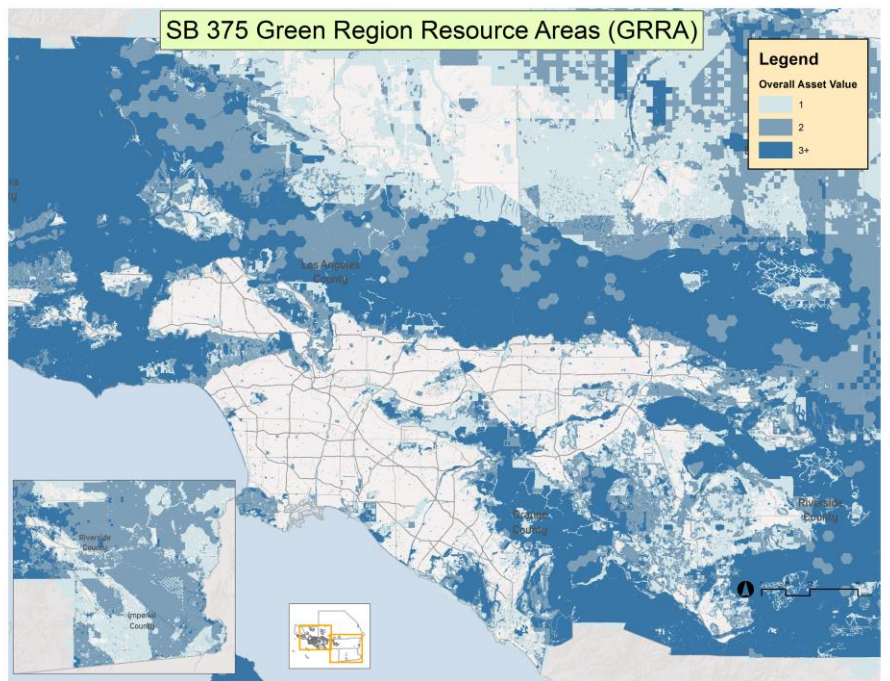
# Administrative/Working Lands Space Multi-Benefit Asset Map



15

## Consolidated Green Region Resource Areas

- Identifies overlaps of:
  - Flood areas
  - Sea level rise
  - Wildfire risk
  - Open space and parks
  - Sensitive habitat areas
  - Tribal nations
  - Military installations
  - Farmlands

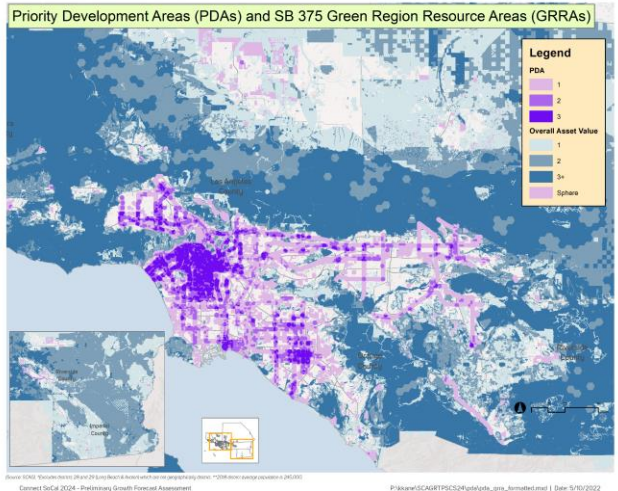


Source: SCAG. \*Excludes districts 29 and 20 (Long Beach & Avondale) which are not geographically distinct. \*\*2018 district average population is 245,000. Prepared by SCAG in 2022. - (Environmental Growth Element Assessment) E:\Work\SCAG\GIS\GRRAs\GRRAs\_Overview.mxd | Date: 5/10/2022

16

# Preliminary Small Area Household Forecast Methodology

1. Estimate remaining general plan capacity and control to county/regional projection
2. Add RHNA/housing element rezone sites if needed
3. Growth prioritization steps
  - Increase in Priority Development Areas (PDAs)
  - Minimize in Green Region Resource Areas (GRRAs)



Number of Priority Development Areas	4	3	2	1	0	4	3	2	1	0	4	3	2	1	0	4	3	2	1	0
Number of Green Region Resource Areas	0	0	0	0	0	1	1	1	1	1	2	2	2	2	2	3+	3+	3+	3+	3+
Step #	1	2	3	4	5	6	7	8	9	10	11	12	13	14	15	16	17	18	19	20

Connect SoCal 2020's preliminary forecast only used Step 1.

# Data/Map Books Release

- February 2022 – GRRRA thematic maps
- May 2022 (via sharepoint from SCAG email) – Draft SED, GRRRA thematic maps, consolidated maps, and individual maps showing underlying GRRRA data elements
- June 2022 (posted to SCAG website) – Updated GRRRA descriptions; note underlying data did not change from previous version



# THANK YOU!

For more information, please visit:

<https://hub.scag.ca.gov/pages/ldx>





# RHNA REFORM

July 21, 2022

[WWW.SCAG.CA.GOV](http://WWW.SCAG.CA.GOV)

1

## RHNA Reform

- During the 6<sup>th</sup> RHNA cycle, a number of issues were raised by jurisdictions and stakeholders
  - Calculation of regional determination
  - Factors used to determine housing distribution in the methodology
  - Role of Connect SoCal household projections
  - And more!
- SCAG has committed to review these issues and facilitate conversations with HCD to reform RHNA

2

## State RHNA Reform

- AB 101 (2019) requires the California Department of Housing and Community Development (HCD) to *“develop a recommended improved RHNA allocation process and methodology that promotes and streamlines housing development and substantially addresses California’s housing shortage”*
- Includes statewide stakeholder participation
- Limited to RHNA (Government Code 65584 through 65584.2)
  - **Does not include zoning or housing element issues**
- HCD must submit a report to the Legislature by December 31, 2023

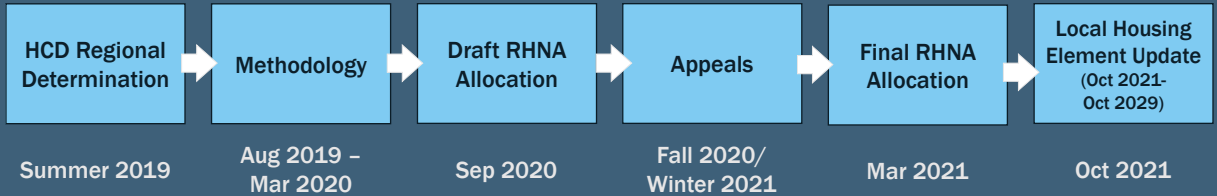
3

## SCAG RHNA Reform

Date	Action
July 6, 2022	Public Information and Input Session on RHNA reform
July 19, 2022	Housing Working Group meeting
July 21, 2022	Technical Working Group meeting
August 12, 2022	RHNA reform comments due to SCAG: <a href="mailto:housing@scag.ca.gov">housing@scag.ca.gov</a>
TBD	Special CEHD Meeting
TBD	Presumed statewide workshops on RHNA reform by HCD
TBD	CEHD Meeting to review and approve recommendations to Regional Council
TBD	Regional Council approval of CEHD recommendations/submit final RHNA Reform recommendations to HCD
TBD	Presumed due date for comments to HCD on RHNA Reform
December 31, 2023	Due date for HCD’s report to the Legislature on RHNA Reform

4

# 6<sup>th</sup> Cycle RHNA Timeline



# Regional Determination

HCD provides a regional determination in consultation with SCAG and the Department of Finance (DOF)



SCAG: 10.1%  
US avg: 3.4%

## Regional Determination

5 <sup>th</sup> cycle calculation	
Existing + Projected households	6,516,345
-Occupied Units (and Tribal HH)	-6,044,940
=Subtotal	468,595
+Vacancy need	13,445
+Replacement need, 0.5%	2,410
-Vacant units	-75,390
=Regional determination	409,060

6 <sup>th</sup> cycle calculation	
Existing + Projected households	6,801,760
+Vacancy need	178,896
+Overcrowding, 6.7% <b>(new!)</b>	459,917
+Replacement need, 0.5%	34,010
-Occupied Units	-6,250,261
=Subtotal	1,224,352
+Cost burden <b>(new!)</b>	117,505
=Regional determination	1,341,827

7

## RHNA Methodology: Primary Factors

Based on:



Share of household growth



Job Accessibility



Transit Accessibility



Social Equity Adjustment

- Household income distribution
- Other indicators of resources (environment, education, economy)

8

8

## RHNA Reform Input Session: July 6

### Comment highlights

- There should be a panel of experts to review the regional determination by HCD before its finalized
- HCD did not reflect all required factors in State housing law when providing a regional determination
- The regional determination should have been a range as in prior cycles
- The 6<sup>th</sup> cycle determination was not sufficient to meet SCAG housing needs

9

## RHNA Reform Input Session: July 6

### Comment highlights

- "Consistent with the development pattern of the SCS" should be more clearly defined
- More weight and emphasis should be put on transit accessibility and jobs access
- Transit and job access factors should be based on the planning period, not long-term
- Distribution methodology factors should include:
  - High wildfire risk
  - Exceeding prior RHNA need
  - Density
  - High median rents
  - Vacant office space and remote employee market
  - Aging infrastructure and cost of development

10

## **RHNA Reform Input Session: July 6**

### Comment highlights

- More time should be provided for jurisdictions appealing their RHNA
- Trade and transfer of RHNA units should be allowed between jurisdictions, maybe with parameters
- Trade and transfer of RHNA units should not be allowed between jurisdictions
- Subregional delegation should not be made available

11

## **Questions for discussion: Regional Determination**

- How do we minimize double counting for factors, such as overcrowding and cost-burden?
  - Should the factors be reordered in the calculation of regional determination?
- What are your thoughts on a panel of experts reviewing individual regional determinations from HCD before they are finalized?
  - Who should be on this panel? What role could it have?

12

## Questions for Discussion: Methodology

- What other factors should be included in the RHNA methodology?
  - Should these additional factors be codified statewide or at the discretion of the COGs?
  - What should be the basis year for the factors? Current, short-term, long-term?
- How can we continue furthering the objective of affirmatively furthering fair housing?
- Should the requirement for the methodology to be “consistent with the development pattern of the SCS” be further defined in State housing law?

13

## SCAG RHNA Reform

Date	Action
July 6, 2022	Public Information and Input Session on RHNA reform
July 19, 2022	Housing Working Group meeting
July 21, 2022	Technical Working Group meeting
August 12, 2022	RHNA reform comments due to SCAG: <a href="mailto:housing@scag.ca.gov">housing@scag.ca.gov</a>
TBD	Special CEHD Meeting
TBD	Presumed statewide workshops on RHNA reform by HCD
TBD	CEHD Meeting to review and approve recommendations to Regional Council
TBD	Regional Council approval of CEHD recommendations/submit final RHNA Reform recommendations to HCD
TBD	Presumed due date for comments to HCD on RHNA Reform
December 31, 2023	Due date for HCD's report to the Legislature on RHNA Reform

14



# THANK YOU!

---

For more information, please visit:

<https://scag.ca.gov/rhna>