

RECONNECTING COMMUNITIES: FEDERAL AND STATE PILOT PROGRAMS

FEDERAL PROGRAM OVERVIEW

The U.S. Department of Transportation’s (U.S. DOT) Reconnecting Communities Pilot (RCP) Program restores community connectivity by removing, retrofitting, or mitigating highways or other transportation facilities that create barriers to community connectivity—including barriers to mobility, access, or economic development.

U.S. DOT originally allocated \$1 billion in grant funding to be distributed between fiscal year (FY) 2022 through FY2026. According to the FY2024 Notice of Funding Opportunity released in July, all remaining funds will be distributed as part of the FY2024 funding cycle. This will include a total of \$607 million, with \$457 million for capital construction and \$150 million for community planning. FY2024 grant applications are due September 30, 2024. The program requires a 20 percent minimum non-federal match. The program will cover up to 80 percent of project costs for planning grants and up to 50 percent for construction grants. The [California Department of Transportation \(Caltrans\) solicits projects](#) with city partners to co-apply for RCP Program funding each year. Detailed information about the program, project and applicant eligibility, and application requirements is available at the [U.S. DOT website](#).



Source: OJB

RCP AWARDEES IN THE SCAG REGION

- > City of Long Beach
- > City of Los Angeles
- > City of Montclair
- > City of Pasadena
- > County of Los Angeles
- > Friends of the Hollywood Cap Park, Inc.
- > LA Metro
- > Port of Los Angeles

FISCAL YEAR	FY2024
Planning Funds Availability	\$150 million
Capital Funds Availability	\$457 million
Total Authorized Amount	\$607 million

ELIGIBLE FACILITIES AND PROJECTS



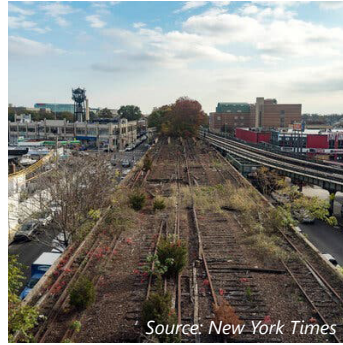
Source: City of Milwaukee

Highways



Source: High Speed Rail

Viaducts



Source: New York Times

Transit Lines



Source: Adobe Stock

Rail Yards



Source: Rob Schumacher

Freight Rail Lines



Source: Wikimedia Commons

Gas Pipelines



Source: Santa Monica Daily Press

Airports



Source: Daily Breeze

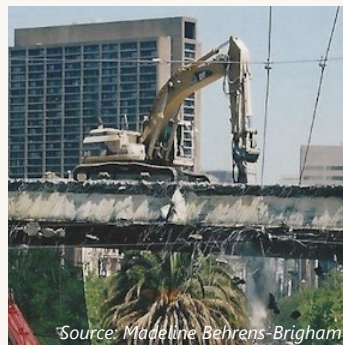
Principal Arterial Facilities

Many types of design solutions may be considered to reconnect communities around these facilities. Examples of reconnecting solutions may include:



Source: Streetsblog LA

High-Quality Public Transportation



Source: Madeline Behrens-Brigham

Infrastructure Removal



Source: Cordogan Clark

Pedestrian Walkways and Overpasses



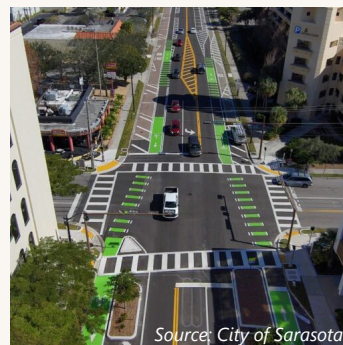
Source: OJB

Capping and Lids



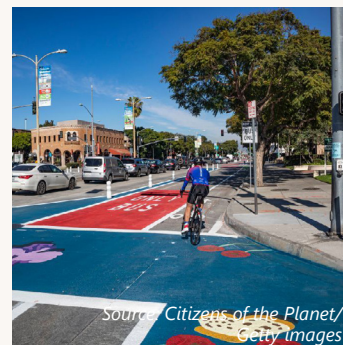
Source: Congress for the New Urbanism

Linear Parks and Trails



Source: City of Sarasota

Roadway Redesigns and Complete Streets Conversions



Source: Citizens of the Planet/Getty Images

Main Street Revitalization



Source: Christopher Martin

Railyard Redevelopment